

AIA Chicago

FOCUS



May 1994



A Chapter of the
American Institute
of Architects

30089
FACTORY LOB

RELIANCE - BLDG

FOCUS

Read All About It

EDITORIAL ADVISORY COMMITTEE:

John H. Nelson, AIA
Linda Searl, AIA
Alice Sinkevitch, Executive Director

The CCAIA FOCUS (ISSN 1071-3700) is published monthly except for a combined July/August issue by the AIA Chicago 222 Merchandise Mart Plaza, Suite 1049 Chicago, Illinois 60654. Second class postage paid at Chicago, Illinois

POSTMASTER:

Send address changes to FOCUS
AIA Chicago
222 Merchandise Mart Plaza
Suite 1049
Chicago, Illinois 60654

Except where noted, the opinions expressed in the FOCUS reflect those of the author only and do not reflect or represent the position of AIA Chicago or the American Institute of Architects. Advertising of products and services appearing in the FOCUS does not constitute endorsement by AIA Chicago or the American Institute of Architects.

2

PAGE 3 FOCUS ON PROGRAMS

PAGE 6 INDIVIDUALITY RESTORED Two Chicago landmarks journey to regain juxtaposition

PAGE 8 CHAPTER NEWS Anniversary Lecture Series highlights Chicago's living architectural history An introduction to the staff of AIA Chicago Frank E. Heitzman, AIA calls on colleagues to mentor Pressing issues from the Planning and Urban Affairs Committee The AIA's Continuing Education Program for licensed architects

PAGE 14 THE NOTEBOOK

PAGE 19 THE CALENDAR

DISPLAY ADVERTISERS INDEX

AIA Trust (10), Architemps (15), AVA (15), Avery Specification Consultants (11), Botti Studio of Architectural Arts (11), Chicago Plastering Institute (17), Euclid Insurance Agency (13), Huey (16), Midstates Concrete (9), Mortar Net (17), Mossner (4, 18), Prairie Shore Partners (12), Sabo & Zahn (11), Zarko Sekerez & Associates (14)

Cover Photo:

The Reliance Building, circa 1896. Photo courtesy of the Commission on Chicago Landmarks.

FOCUS ON PROGRAMS

University of Chicago Business School Tour

NOTE/TIME/CHANGE

Tues., May 10, Noon; Cityfront Center
Sponsor: Corporate Architects Committee

Tour the new University of Chicago Graduate School of Business at Cityfront Center. University architect James S. Gimpel, AIA will lead the tour with project team members from Stein & Co., Lohan Associates and the University of Chicago. Meet in the building's lobby promptly at Noon.

Architectural Criticism

Wed., May 11, 6:30 p.m.;

AIA Chicago Board Room

Sponsor: Young Architects Committee

Open discussion with Ed Lifson and Ed Keegan, AIA. Lifson is a reporter for National Public Radio and architecture critic for WBEZ as well as host of *Artistic License*. An architect at VOA, Keegan has written extensively for *Inland Architect*.

Electronic Publishing

Thurs., May 12, 5:30 p.m., McGraw-Hill, Two Prudential Plaza, 180 N. Stetson Ave., Suite 700
Sponsor: Computer Committee

A presentation and discussion of the fifth quarterly release of Sweet's Electronic Publishing's *SweetSource Catalog*. New CD-ROM based software and product information systems include CAD drawings, digital pictures and text provided by more than 700 building products and services companies. Four thousand product screens reference over 24,000 products. This is an chance to speak with *SweetSource* development staff directly.

Determining Costs, Billing Rates and Fees

Tues., May 24, 5:30 p.m.;

AIA Chicago Board Room

Sponsor: Office Practice Committee

A discussion on determining billing rates based on a firm's costs. Whether a two- or 200-people firm, salaries,

benefits, overhead and profit goals need to be calculated when determining hourly rates to ensure profitability. An objective case study will be used as an example.

Zoning and Planned Development: History and Process

Wed., May 25, 5:30 p.m.;

AIA Chicago Board Room

Sponsor: Planning and Urban Affairs Committee

Gred Furda, a principal at Sidley & Austin, will moderate a presentation and discussion of the history of Chicago zoning and the planned development process.

Architectural Acoustics: The Basics

Thurs., May 25, Noon; Chicago Bar

Association, 321 S. Plymouth Court

Cost: \$7.50 includes lunch; purchase ticket in 1st Fl. membership office before program.

Sponsor: Technical Committee

Join acoustics designer Victoria Cerami of Cerami Associates of New York as she discusses the basic elements of acoustical design.

Real Estate Committee Program Planning

Thurs., May 25, Noon;

AIA Chicago Board Room

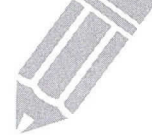
Sponsor: Real Estate Committee

The Real Estate Committee offers programs to help architects understand and adapt to the turbulent real estate market. Future programs presenting new opportunities and market trends are in the works. AIA Chicago members and their guests are invited to the Steering Committee meeting to discuss seminar topics. Please bring a lunch.

Special Scheduling Note

The Interior Architecture Committee, which was scheduled to meet on May 26, will hold its meeting earlier in the month. Please watch your mail for an announcement.

Sign Me Up



- 5/10 Corporate Architects Committee: University of Chicago Tour
- 5/11 Young Architects Committee: Architectural Criticism
- 5/12 Computer Committee: Electronic Publishing
- 5/18 125th Anniversary Lecture Series: Living History
- 5/24 Office Practice Committee: Determining Costs, Billing Rates and Fees
- 5/25 Planning and Urban Affairs Committee: Zoning and Planned Development
- 5/25 Technical Committee: Architectural Acoustics
- 5/25 Real Estate Committee: Program Planning

Name _____

Office _____

Address _____

City _____

Phone _____

Fax _____

Method of Payment Check

American Express Visa Mastercard

Credit Card No. _____

Expiration Date _____

Name on Card _____

Signature _____

Mail or Fax to:

AIA Chicago

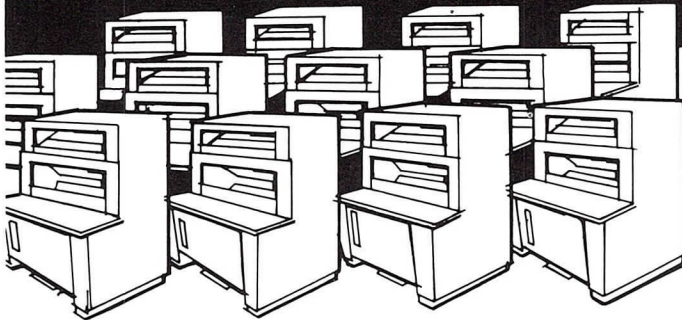
222 Merchandise Mart Plaza

Suite 1049

Chicago, Illinois 60654

Fax 312/670-2422

**When you need 1
or 1,000,000 blue
prints, or any other
quantity...**



**MOSSNER'S 15 State-of-the-Art
Blue Print-White Print Machines
at One Location Produce Them
Fast, Fast, Fast**

4

**NO JOB TOO LARGE
NO JOB TOO SMALL**

**BLUE LINE, BLACK LINE,
BLUE PRINTS AND
SEPIA REPRODUCIBLES**

Speed, quality and dependability... these characterize Mossner's "blue print" service since 1922.

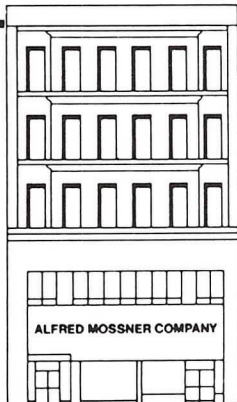
For more than 60 years, Mossner has provided the latest and fastest state-of-the-art, high-production equipment.

More than 50 messengers plus radio-dispatched pick-up and delivery vehicles assure the fastest possible service, including dependable print distribution to consultants, contractors and clients.

And that goes for *any* quantity you may require.

Mossner 372-8600
THE REPRODUCTION PEOPLE • LARGEST IN THE MIDWEST

Mossner Building • 137 North Wabash at Randolph (across from Marshall Field's), Chicago, IL 60602



Fast one-source service for all of your reproduction requirements

PHOTOMECHANICAL SERVICES

- STAR-REPRO® Drafting Systems—for pin-bar, overlay and team drafting
- Precision camera work up to 48 in. by 72 in.; enlargements and reduction to 10 times.
- Autopositives
- Scissor drafting
- Photo drafting
- PencilTone® reproductions
- Xerox 600 enlargements from 35mm microfilm
- Xerox 2080 and 1860 translucent vellum or Mylar intermediates, and paper prints - reduced or enlarged

**105mm and 35mm MICROFILM SERVICE
DRAFTING SUPPLIES AND FURNITURE**

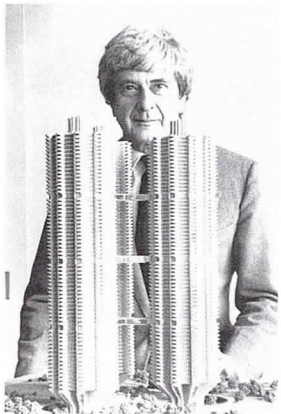
WE DO IT ALL UNDER ONE ROOF

OFFSET PRINTING

- Specification sheets and booklets
- MAGI-COPY® fast printing service—ideal for architectural and engineering specifications

**BLUE PRINTS,
WHITE PRINTS,
SEPIA INTERMEDIATES
ON PAPER OR MYLAR**

125th Anniversary Lecture Series



Bertrand Goldberg, FAIA



Walter Netsch, Jr., FAIA

On May 18, accomplished professionals Walter Netsch, Jr., FAIA and Bertrand Goldberg, FAIA commemorate the founding of the Chapter by exploring the living history of Chicago architecture. The moderator is Stephen Wierzbowski, AIA of Florian-Wierzbowski Architecture, P.C.

The 125th Anniversary Lecture Series is co-sponsored by the City of Chicago Department of Cultural Affairs. The series is made possible through the generous support of Petersen Aluminum Corp., Herman Miller Inc. and USG Corp.

All programs are held at the Chicago Cultural Center, 78 E. Washington St. in the second floor theater beginning at 5:30 p.m. Admission is free.

Behind the Scenes at AIA Chicago

With several new staff members joining us recently, we thought this would be the perfect time to reintroduce you to those who keep AIA Chicago up and running.

Executive Director

Alice Sinkevitch returned as executive director of AIA Chicago in 1992 after time away as the director of marketing for Holabird & Root and the editor of the *AIA Guide to Chicago*, which was published last summer. Alice received an A.B. from Mount Holyoke College and a master's of management from the Kellogg Graduate School of Management. Before originally holding the executive director position from 1981-1985, Alice worked at the Chicago Architecture Foundation at the ArchiCenter.

Program Director

Amy Gold came to AIA Chicago from the Architecture Society of the Art Institute of Chicago where she was project manager. She holds a master's degree in art history from the University of Chicago and a bachelor's degree from DePaul University. While at the Art Institute, Amy coordinated two recent exhibitions—*Chicago Architecture and Design 1923-1993* and *Austrian Architecture and Design: Beyond Tradition in the 1990s*.

Membership Director/Office Manager

Cynthia Burton started at AIA Chicago as the public information receptionist in 1986. Today, she is most members' direct link to the organization. Cynthia has a bachelor's degree in business administration from Delta State University in Cleveland, Mississippi. She is married and the mother of six-month-old Candace.

FOCUS Editor

Before joining the staff as newsletter editor in March, **Susan Nelson** was the publications manager for the Jewish Community Centers of Chicago. She received a bachelor's degree from

Guilford College in Greensboro, North Carolina and a master's degree in magazine publishing from Northwestern University's Medill School of Journalism. Susan specializes in developing publications for not-for-profit organizations.

Financial Manager

Crystal Gagler brought extensive experience in accounting and computer programming when she joined the staff in September 1993. Her career has included positions with Graphic Warehouse Co., D.E.G. Software, Inc., and Arthur Andersen. Crystal received her accounting degree from Roosevelt University in Chicago.

Public Information/Documents Coordinator

A relative newcomer to Chicago and the AIA, **Eirene Glavin**, holds a B.S. in architecture from the University of the Philippines. She was employed previously as an intern architect at Luis and Associates, Quezon City, Philippines and has been trained in Microstation 4.02 and AutoCAD R.12.

Documents Coordinator

Currently in her fourth year of architecture school at the University of Illinois—Chicago, **Kathy Banks** has processed AIA documents orders since August 1992. Interested in exploring all facets of the field, Kathy also helps with inquiries about the Chicago architectural community.

Office Assistant

Heather Behr is working with AIA Chicago on a temporary basis. She received a bachelor's degree from Illinois State University. Heather was previously an intern at Barbara Pearlman Design Atelier.

Individuality RESTORED

by Susan Nelson

Few would have bothered comparing the Waller Apartments and the Reliance Building when they were constructed in 1895. Differing greatly in style and intended use, a comparison of the two structures would have defied even that of an apple to an orange.

In the Loop, designer Charles Atwood of D.H. Burnham and Co.—working from a foundation and first floor built four years earlier from the plans of John Wellborn Root—designed the towering, white-icing Reliance Building. The office building offered much needed commercial space downtown. On the west side, developer Edward C. Waller, hired budding architect Frank Lloyd Wright to design his namesake apartments, an exploration in low-cost housing. A template for the better-known Francisco Terrace Apartments, these low-stacked buildings provided the city's first financially accessible housing for young, newly married couples and single-parent families in the neighborhood.

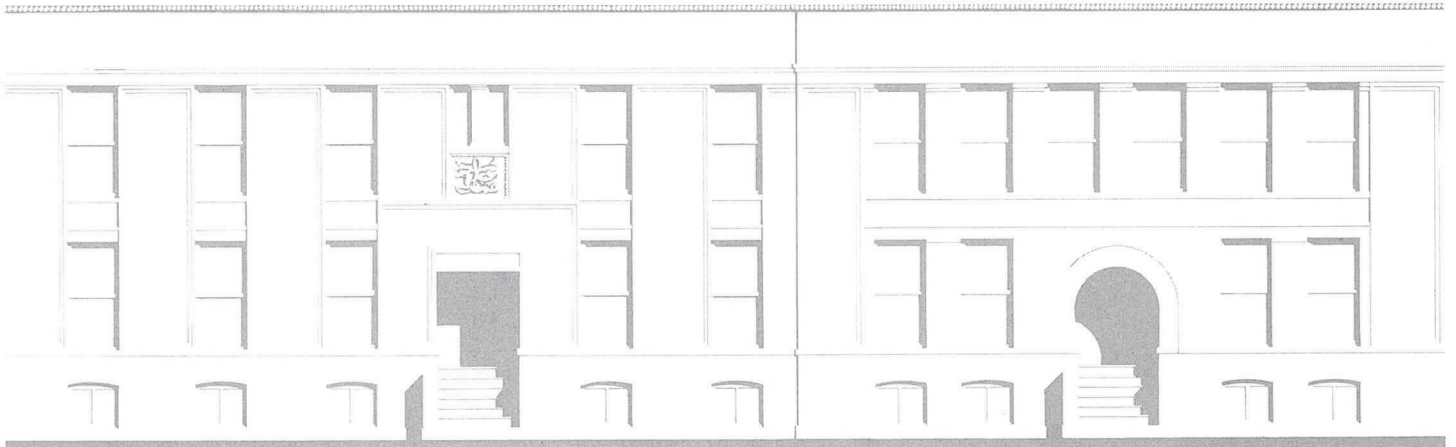
It is difficult still to find many similarities between the Reliance Building and the Waller Apartments, but as both face major renovation efforts this year the two structures have more in common than their creators ever could have imagined. Both reveal themselves today as dirty, barren structures with questionable viability. The once radiant Reliance is blackened from neglect; its street-level storefronts house a discount convenience store and a lingerie retailer. Only six tenants remain in the 57,000 square feet of office space. Of the remaining eight Waller buildings (two fell victim to a 1968 fire) four are decrepit and barely livable. The empty lots created by the demolition of the burned-out buildings are a constant safety hazard to the neighborhood.

The years have brought these once wonderfully unique structures to a common present. However, when both projects reach the end of their first phase of rehabilitation, each will be closer to realizing its singular style and use.

The Waller Apartments 2840-2858 W. Walnut St.

While Edward Waller had developed many downtown office buildings by the late 1890s, he was also interested in establishing housing that would not only serve the city's working poor—who often lived on tightly packed blocks—but could also turn a profit. He would realize only a three percent profit on the project, but the Waller Apartments are regarded as a landmark in low-cost housing development. They also document Frank Lloyd Wright's growth as an architect.

The Landmarks Preservation Council of Illinois (LPCI), with architect John Eifler, AIA, plans to restore the Waller Apartments to their original design and purpose. In rehabilitating the buildings, separate one-story apartments will be combined into single-family duplexes. Each "townhouse" will include three bedrooms, 1-1/2 baths, living room, dining room and kitchen. In addition, owners will have direct access to a multi-purpose basement and will be



required to have changes to significant features pre-approved by LPCI.

Work is scheduled to begin this summer on four of the eight existing buildings—2844 through 2850 W. Walnut St. Two of the buildings are expected to receive attention only on their exteriors, while the buildings at 2844 and 2848 W. Walnut will be completely renovated. The renovation will expose original skylights, gut the interior of most of its structural components, and re-configure stairs to enable direct access to the second floor.

According to Eifler, "incorporating the new use of the buildings into the historical presence" was his "self-imposed challenge."

"You want to pat yourself on the back for saving the building and creating a stable environment for the neighborhood, but at the same time, you know your work will erase a part of history," Eifler said.

Ironically, much of the original interior trim is salvageable because of a century's

worth of paint that actually prevented deterioration. "Most of the structural components are shot," Eifler said, "but even though there'll be drywall and carpet, it will be 1895 trim and we'll have saved part of history."

In phase two of the project, LPCI will finalize the purchase of the two vacant lots at 2852 and 2854 W. Walnut St. for development and in-fill. The Council will reconstruct the two buildings destroyed by fire to return the property to its original

appearance. Future plans include acquiring the land bordering the alley of each building to develop private yards and garages to improve safety.

LPCI is soliciting both monetary and in-kind contributions to help with the expense of renovating the Waller Apartments. For information on supporting the project, please call Vince Michael at 312/922-1742.

continued on page 8



The Waller Apartments today, complete with an empty lot created when fire destroyed two of the original ten buildings. Photo courtesy of LPCI.



An illustration of the Waller Apartments as designed. Courtesy of Eifler and Associates Architects.

The Reliance Building 32 N. State St.

Once on the cutting edge of architecture, now a classic example of the Chicago School skyscraper, the Reliance Building's rehabilitation has been longer in coming than that of the Waller Apartments. Local preservation groups have been working on behalf of the Reliance since 1987, encouraging the city to make the estimated \$19 million renovation project a top priority in the State Street redevelopment.

Plans are now on sure footing with the city in possession of the building, Baldwin Development Co. on board and architects at McClier and Wiss, Janney, Elstner Associates, Inc. already well into the first phase. Baldwin and McClier teamed up on the successful Rookery metamorphosis, so hopes are high that work will begin on the building this summer. According to Chuck Thurow of the Department of Planning/Commission on Chicago Landmarks, spring 1995 has been targeted as a possible completion date, depending on the results of the Historic Structure Report.

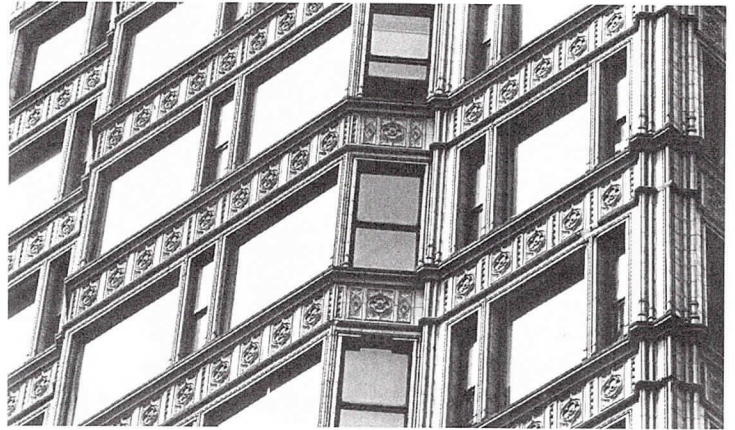
Phase one includes the investigation of the facade by Wiss, Janney, Elstner; documenting existing conditions; developing schematic design drawings; and pricing the job. According to Gunny Harboe, AIA, restoration architect at McClier, the exterior survey has resulted in a few pleasant surprises.

"Everyone's known for a long time that much of the terra cotta was in bad shape," Harboe said, "but the good news is that the back up metal framing appears to be very sound. There is some localized corrosion but the outlook is optimistic."

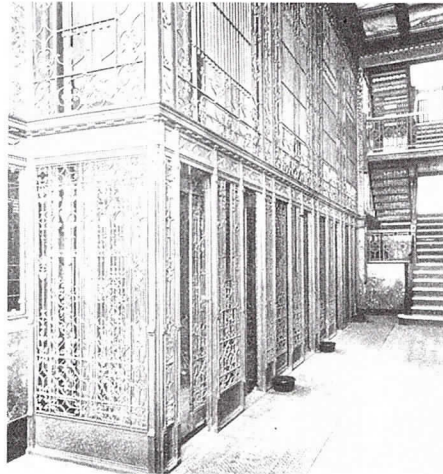
Harboe admits the building needs a lot of work, including the replacement of distressed window heads, mullions and "quite a few pieces of the terra cotta."

The famous Reliance Building windows, an early example of the Chicago window.

An elevator lobby in its 1895 splendor.



Courtesy of the Commission on Chicago Landmarks.



Courtesy of The Winterthur Library: Printed Book and Periodical Collection and McClier.

Selected pieces of corroded metal framing will have to be tenderly replaced without creating a domino effect on the more stable pieces.

When the first research phase is completed in June, Baldwin plans to purchase the Reliance from the city and begin restoring its defining exterior and retail space before moving upstairs to rehab the offices. According to Baldwin's project manager, Larry Mudd, several retailers already have been lined up to take over the renovated storefront space and the development company is "very excited" about the interest shown by other potential tenants.

PRESERVATION WEEK EVENTS

MAY 9-10

Heritage and Preservation Days
10:00 a.m. - 2:00 p.m.

Displays, exhibits products from historical preservation and archaeology organizations and museums in Illinois.

James R. Thompson Center, Ground Level

MAY 9

1994 Driehaus Preservation Awards
11:00 a.m.

Landmarks Preservation Council of Illinois announces the 1994 awards winner.

James R. Thompson Center, Room 2-025

MAY 9

Chicago's Historical Houses of Worship
and How to Preserve Them

12:15 - 1:00 p.m.

Slide show by the Landmarks Preservation Council of Illinois and Inspired Partnerships.

James R. Thompson Center, Room 2-025

MAY 10

Your House Has a History

12:15-1:00 p.m.

Lecture and slide show by the Landmarks Preservation Council of Illinois.

James R. Thompson Center, Room 9-031

MAY 11

Frank Lloyd Wright's Waller Apartments
10:00 a.m.

A brief lecture on the history of the city's first low-income housing project.

Waller Apartments

2844-2848 W. Walnut St.

For further information, call the Illinois Preservation Agency at 312/814-1409.

PERMABAN™

A Forming System for High Quality Concrete Floors WAREHOUSING & COLD STORAGE

THE CONCEPT

An improved and refined system for protecting construction and contraction joints.
Eliminates chipping and spalling due to heavy fork lift traffic, while providing floor tolerances to F-min 100'.

FREEZER WAREHOUSE
FLOOR SECTION and
JOINT-RACK LAYOUT

NOTES:

STEEL ANGLE JOINTS™

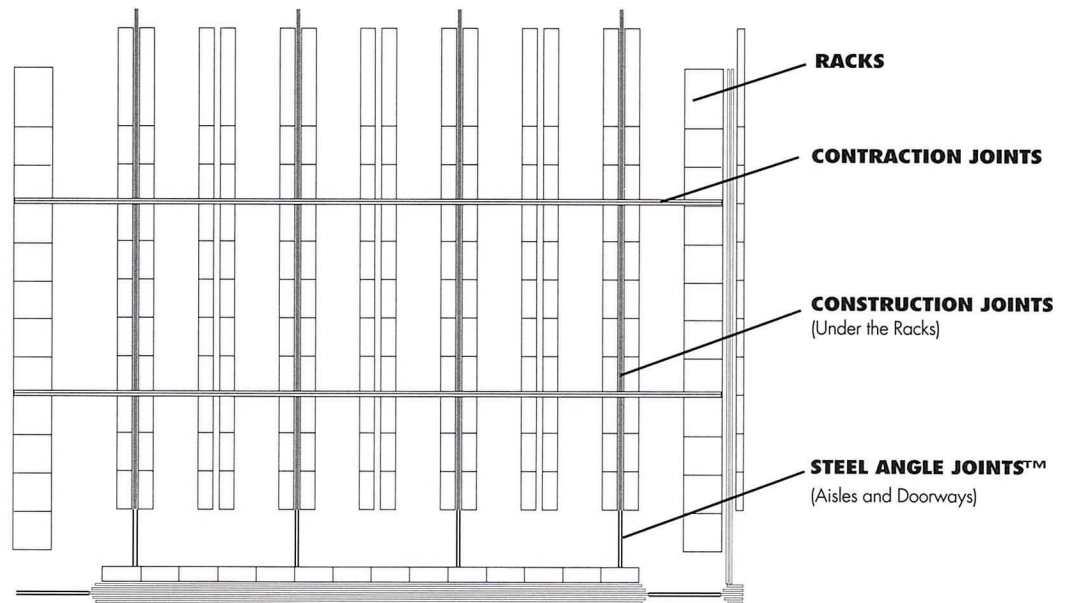
- PNA Steel Angle Joint™ in all traffic aisles, door thresholds
- 3/4" x 18" square dowels @ 1' centers
- PNA Expando-Lok™ on 1/2 bar length

CONSTRUCTION JOINTS

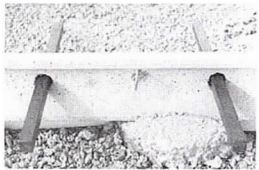
- PNA Concrete Forms™ set on pads of concrete
- 3/4" x 18" square dowels @ 1' centers
- PNA Expando-Lok™ on 1/2 bar length
- PNA Freezer-Fil™ in all joints

CONTRACTION JOINTS

- 3/4" x 18" square dowels @ 1' centers in dowel basket
- PNA Expando-Lok™ on 2/3 bar length
- PNA Freezer-Fil™ in all joints

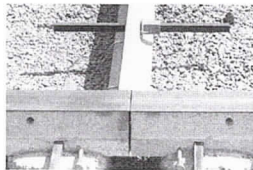


The components are:



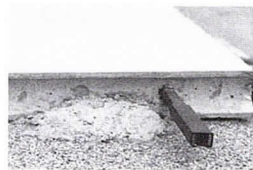
PERMABAN™ CONCRETE FORMS

provide an economical forming system, achieving exacting tolerances without puncturing vapor barrier and insulation. The dowels provide additional load transfer capability at the joints.



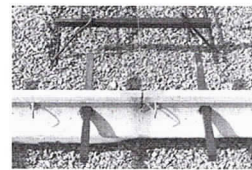
STEEL ANGLE JOINTS

offer armored joint protection in areas subjected to heavy vehicle traffic such as doorways or turn around areas.



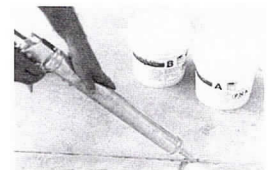
EXPANDO-LOK CLIPS

fit over the dowels and eliminate cracking at the end of the dowels while allowing horizontal movement due to shrinkage and/or differential expansion.



DOWELS, DOWEL BASKET ALIGNERS

recommended at contraction & construction joints for increased load carrying capability.



PERMABAN™ JOINT FIL

is a two part semi rigid joint filler with a shore A hardness of 80. This prevents sidewall spalling and chipping, and will not "weld" slabs together.

This is a very brief overview of what we believe to be the best forming system for quality concrete floors in America today.



"Serving the Industry with Flexicore"

MID-STATES CONCRETE PRODUCTS CO.

500 S. Park Avenue
South Beloit, IL 61080

1-800-236-1072

1-815-389-2339 FAX

A Call for IDP Mentors

by Frank E. Heitzman, AIA

I feel I am finally approaching maturity in my profession, and this has led me to a better understanding of the relationship between practicing professionals and those who aspire to enter the profession. There is a long tradition of apprenticeship in this noble field, going back at least as far as Vitruvius. During the Middle Ages, those who would become Master Masons (an architect by today's definition) went through a rigorous preparation by learning everything from how to cut stone from the quarries to the "secret" of geometry. For a thousand years, that was the norm.

Since I first began to be interested in architecture in high school, I have been aware of the great concern most architects have of bringing up the next generation. My own early mentor, Jack Gockel, would spend countless hours teaching me things

not taught in school, and allowing me to take on more and more responsibility in his office. Jack and I still write one another.

That kind of relationship between an architect and his apprentice is fading quickly, although the desire to perpetuate it is still strongly felt among all of us. Jack Hartray, FAIA stated at the September board meeting of AIA Chicago that there are as many architectural students now in school as there are practicing architects. It would be unrealistic to believe that each of us could do for those students what Jack Gockel did for me.

The AIA's Intern Development Program (IDP) formally replaces what was an informal, but traditional, practice in the past. Obviously, IDP will need many Jack Gockels to mentor the large new generation

of young architects. That is why as an IDP state coordinator, I am asking you to serve as an IDP mentor. As a mentor, your responsibilities include meeting with your intern several times during the year to encourage them, find out how they're doing and help them with any deficiencies they may feel they have.

Your title is "advisor" which means your advice, given in good faith, can be either followed or not by the intern. But the fact that they have an advisor will be invaluable in their struggle to achieve their own maturity. It will also strengthen the profession by bringing into it people who are as fully committed as you are.

To participate as an IDP advisor or for information, call Frank E. Heitzman, AIA at 708/848-8844.

What Do Architects Say About The AIA Trust Health Insurance Plan?

- *83% of participants say they are very satisfied.*
- *59% say the plan is a reason to belong to AIA.**

And in its December 1992 issue, MONEY Magazine says the AIA Trust's plan is an excellent example of a comprehensive medical coverage at a reasonable price.

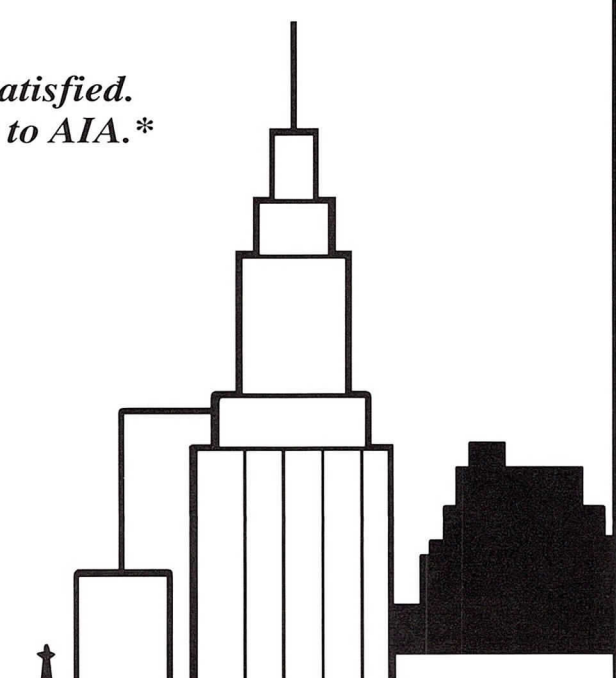
Call for information... **1-800-343-2972**



AIA Trust

The American Institute of Architects
Benefit Insurance Trust

* AIA member insurance evaluation & needs assessment study, wave #3. Wiese Research Associates, October 1992.



10

In the Works with Planning and Urban Affairs

by Leonard Koroski, AIA

Neighborhood Development

In the fall of 1992, members of AIA Chicago and the Home Builders Association met in a day-long charrette with the Department of Planning and Development to create design guidelines for the North Kenwood/Oakland neighborhood. Guideline suggestions addressed the differentiation of densities, location of commercial zones, and definition of standards for street facades, including porches, garages, materials and setbacks.

This spring, the fruit of those guidelines will be realized when the Oakenwald Avenue homes of ten builders are highlighted in the Festival of Homes. Beyond this initial development, each builder has an additional five lots available. With guidelines for controlled development now in use, the North Kenwood/Oakland neighborhood has a greater potential for revitalization.

CitySpace

As a follow-up to the recent CitySpace story in FOCUS (April 1994), the program continues to gain momentum in its effort to create a comprehensive and coordinated open space development plan for the city. Twelve months into its two-year funding cycle, the CitySpace program is beginning to report on preliminary findings and model projects selection.

AIA Chicago members have joined CitySpace task forces and additional volunteers are welcome. Additionally, a steering committee, working through the Planning and Urban Affairs Committee and the Board of Directors, will offer a comprehensive response to support and promote the program. Such a response may

include planning a design charrette to emphasize a part or parts of the program.

Burnham Park Task Force and Lake Shore Drive Relocation

The Burnham Park Task Force, with the involvement of approximately 15 to 18 civic groups, has become the vehicle for the public planning process of the McCormick Place expansion and the Lake Shore Drive relocation.

Though the design team was formally notified in early April, the city project management team has proposed that the

initial public meetings with the design team not be made until the next task force meeting in July. The civic groups have, however, requested that the workplan defining the final scope, tasks and schedule with milestones for public participation be presented in early May.

The success of the Burnham Park Task Force depends upon the planning process and product. Hopefully, the integration of both of these will occur before too much time has passed.

Leonard Koroski, AIA chairs the Planning and Urban Affairs Committee. He is an architect with Lohan Associates.

Sabo & Zahn

Attorneys at Law

Werner Sabo, AIA James Zahn, AIA

Copyrights for architectural works
litigation, arbitration, contracts, real estate
construction attorneys

444 N. Michigan, Suite 3560 (312) 644-2010
Chicago, IL 60611 fax: (312) 644-2012

BOTTI STUDIO
OF ARCHITECTURAL ARTS, INC.
919 GROVE ST., EVANSTON, IL 60201
Phone: 708/869-5933 Fax: 708/869-5996

STAINED AND FACETED GLASS WINDOWS
MOSAIC • PROTECTIVE GLAZING • SCULPTURE
BEVELED GLASS • METAL • MARBLE
COMPLETE INSTALLATION
SANCTUARY FURNISHINGS
COMPLETE INTERIOR RENOVATION
SANDBLASTING • STAINED GLASS RESTORATION
PAINTING AND DECORATING • MURALS • WOOD
STAINED GLASS CONSULTANTS
METAL AND WOOD FRAME RESTORATION

Field Representatives:
New York N.Y., Cleveland Ohio, Atlanta Georgia,
Sarasota Florida, Phoenix Arizona,
San Diego, Los Angeles, San Francisco California,
Seattle Washington

Call or Write for a Free Brochure

Avery Specification Consultants

*Specifications
Product and Material Applications*

Bramman M. Avery, CCS
Licensed Architect

708-869-2650 2637 Ridge Avenue
708-869-2642 Fax Evanston, IL 60201-1756

Beyond the License: Continuing Education for Architects

by William D. Bradford, AIA

National AIA will begin implementing a continuing education program in 1995. By January 1996, continuing education will be required to maintain AIA membership. Although there are still important questions to ask about the implementation of a mandatory continuing education program, it is becoming more apparent that licensed architects are finding it necessary to quantify their post-academic learning experiences to remain competitive, marketable and creative.

Currently, several AIA chapters are participating in a pilot program in an effort to fine tune the AIA/Continuing Education System (AIA/CES). The following is a description of the program as it stands now.

Over a two-year period, members will need to earn between 48 and 80 "learning units" or LUs. A LU is the measure of credit for participating in continuing education programs. The definite number of LUs required will be determined once the pilot program is complete at the end of 1994. Members earn LUs by first choosing a course of study and then completing seminars, workshops, research, teaching, self-study tapes, articles for publication or self-designed learning projects. There is no specific requirement regarding the type of programs you can participate in; however, one-third of your credits must address health, safety and welfare issues.

Continuing education programs can be offered by AIA components; Professional Interest Areas (formerly referred to as a National Committee), which each member may join as part of their regular national dues; schools of architecture; associations; and firms. No matter who the sponsor is, each program will be rated according to pre-established "quality levels."

As of now, there are three levels of quality. Level one requires the learned activity have a *professional purpose* and *appropriate learning resources*. Level two includes the criteria of level one but also requires that information about *learning needs* be obtained from representatives of the target audience during planning and that a portion of the program be devoted to *interactive learning*. A level three program includes levels one and two and requires some of the activities' purposes be developed using information derived from assessing the *audience's needs* and that *feedback* is provided during the activity.

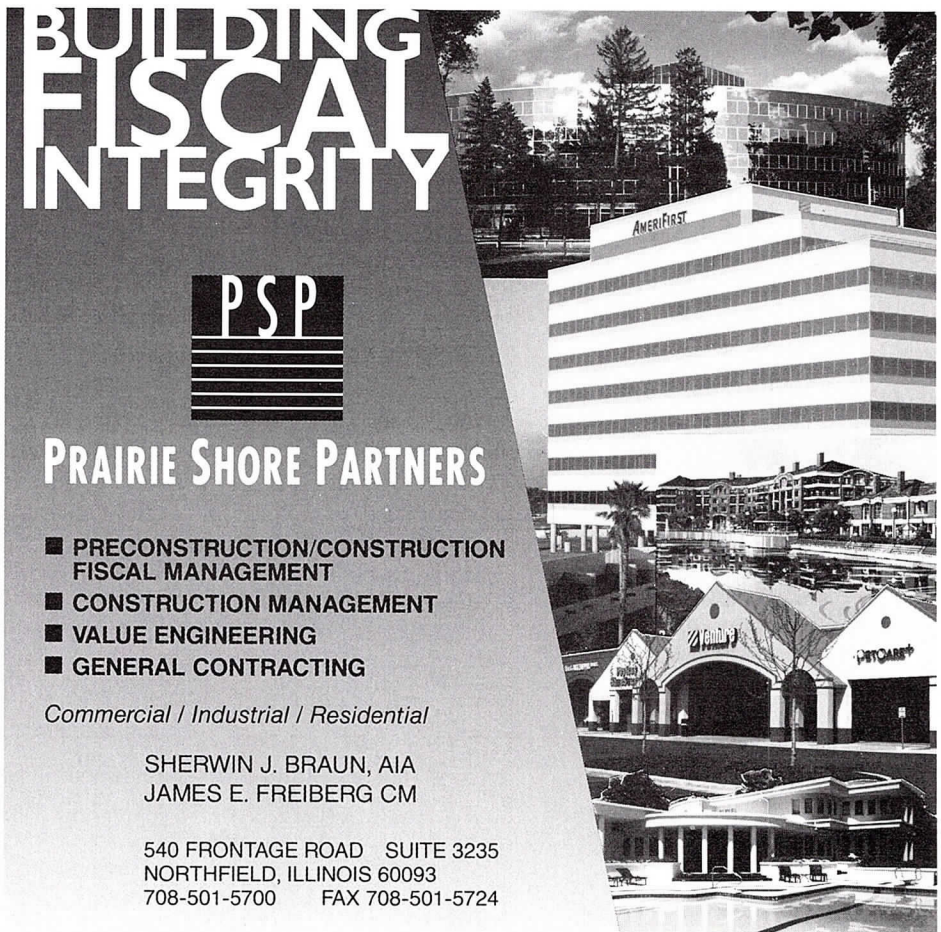
The LUs earned for each program are determined by the time spent participating

and the quality level. For instance a three-hour, level two program earns six LUs. The program organizer is responsible for determining the number of LUs earned and reporting these to national AIA. National AIA will issue an annual transcript of earned LUs to each member and component.

AIA Chicago will be accredited as a provider. Many of its 1995 programs will qualify for AIA/CES credits.

William D. Bradford, AIA, first vice president of AIA Chicago, is vice president and director of design at VOA Associates Inc.

12



**BUILDING
FISCAL
INTEGRITY**

PSP

PRAIRIE SHORE PARTNERS

- PRECONSTRUCTION/CONSTRUCTION FISCAL MANAGEMENT
- CONSTRUCTION MANAGEMENT
- VALUE ENGINEERING
- GENERAL CONTRACTING

Commercial / Industrial / Residential

SHERWIN J. BRAUN, AIA
JAMES E. FREIBERG CM

540 FRONTAGE ROAD SUITE 3235
NORTHFIELD, ILLINOIS 60093
708-501-5700 FAX 708-501-5724

EUCLID

- ◆ **Euclid Insurance Agencies, Inc.** has been providing professional liability insurance and group benefits to architects and engineers for over 15 years.
- ◆ Our goal is to provide professional, personal service that addresses your specific needs.
- ◆ We represent stable, reputable insurance companies — ones that meet our high standards.
- ◆ We offer these important advantages:

MEDICAL BENEFITS

- Endorsed by AIA Chicago
- Various plan designs, including HMO, PPOs & traditional coverages
- Local Administration
- Personal Service Representative

PROFESSIONAL LIABILITY

- Access to over 10 different markets
- Unlimited telephone legal counseling
- Assistance in completing applications
- Optional premium payment financing
- Prompt claim processing
- Quarterly newsletter

- ◆ Our product portfolio includes:

PROFESSIONAL LIABILITY

- Limits of liability
- Per Project Liability
- Legal fees coverage
- Hold harmless agreements
- Equity interest
- Joint ventures
- Environmental coverage
- Other business insurance needs

EMPLOYEE BENEFITS

- Health
- Dental
- Life
- Long Term Care
- HMOs and PPOs
- Short & Long Term Disability, endorsed by AIA Chicago
- 401K Plans
- Voluntary, Life, LTD and Dental

INDIVIDUAL PRODUCTS

- Life, Health & Disability
- Annuities
- Long Term Care
- Buy/Sell Agreements
- Estate & Financial Planning
- Homeowner
- Automobile, Boat & Umbrella

- ◆ Call us and see for yourself — Euclid Insurance Agencies, Inc. has the advantages and products to suit all your insurance needs.

Euclid Insurance Agencies, Inc.

977 Oaklawn Avenue, Elmhurst, IL 60126

708 833-1000

Fax 708 833-1747

WELCOME NEW MEMBERS

AIA

Pamela E. Sundell, CNA Insurance; Joa Nee Hu; Glenn J. Johnson, Primary Design Associates; Russell Drewry, Holabird & Root; Healy M. Rice; David F. Cook; Thomas F. Zordan, Godfry Associates Ltd.; James J. Reno III; Sharlene Young, Perkins & Will; Reynaldo H. Manalang

REINSTATING AIA

William Green, Nadel Partnership, Inc.

UPGRADE TO AIA

Daniel Towler Weese; Richard Deleo

ASSOCIATES

Brian James Aitken, Shore Tilbe Irwin & Partners; Roger T. Dunn, D. Heung &

Associates; Marc Meyers, Illinois Masonry Institute; Jeffrey R. Havel, Kenny Construction

AIA TRANSFERS

Terry D. Littell from Central Illinois Chapter, LZT/Filluung

ASSOCIATE TRANSFERS

Leonard M. Kliwinski, Los Angeles Chapter; Scott J. Vautrin, Northeast Illinois Chapter

PROFESSIONAL AFFILIATE

Kelly Cathcart; Mark Jezior; Brian Musselman, Andersen Windows; Timothy A. Berger, Precise Office Furnishings, Ltd.

EMERITUS

Roy O. Makela; Maurice J. Thominet; Edward C. Colin; Roger G. Whitmer; Arthur D. Dubin

PEOPLE

A. Epstein and Sons International, Inc. has named Michael Damore, AIA executive vice president for architecture, design and planning. Damore joined A. Epstein in 1991 and is currently the firm's principal-in-charge on the Chicago's new Museum of Contemporary Art.



Daniel J. Miller, AIA, Patricia Saldana Natke, AIA, and Lisa Willis-Brown have formed Urban Works, Ltd. a firm providing architectural, interior design and urban planning services.



Aras Rimavicius, an associate member of AIA Chicago, died on December 21, 1993 in an automobile accident in the U.S. Virgin Islands. Following in the footsteps of his father, Antanas, he received his BArch from UIC in 1991. Rimavicius had worked for Loebl, Schlossman and Hackl; Stephen Rankin Associates; Griskelis + Smith Ltd.; and Skidmore Owings and Merrill. An architecture student scholarship fund is being established at UIC in his memory. For information about the Aras Rimavicius Memorial Fund, contact Diane Mosert at the School of Architecture, Art and Urban Planning, 312/996-4714.



The AIA has appointed Philip Schreiner, Hon. AIA, to the newly created position of vice president of member communications. Schreiner was the former editorial director of *Building Design & Construction*.



Green Associates Architects, Inc. has promoted project manager, Phil L. Scott, Jr., AIA to principal. Project manager George W. Reigle, AIA and job captain/computer systems manager David B. Block were both promoted to senior principal.

Land Surveying

Zarko Sekerez & Associates has provided Professional Land Surveying Services to Architects since 1964. Call us today and discover the difference total commitment to client satisfaction makes.

Zarko Sekerez & Associates
Land Surveying & Civil Engineering

111 West Washington, Suite 940
Chicago, Illinois 60602
(312) 726-1313 • fax (312) 236-9506

Walter H. Sobel, FAIA recently accepted an AIA Presidential Citation for his contributions to advance the importance of architecture and the awareness of architects in the design of court facilities. In addition, Walter H. Sobel, FAIA & Associates announced the recent publication of *Twenty Years of Courthouse Design*, a supplement to *The American Courthouse* (1973) which is being reprinted. *The American Courthouse* identifies the basics of successful judicial planning and provides a useful reference for judges, attorneys, government officials as well as architects and urban planners. *Twenty Years of Courthouse Design*, the result of a joint effort between the American Bar Association (ABA) and the AIA, includes in-depth descriptions of 67 U.S. and 14 Canadian courthouses, plus seven law school moot courts built since 1973. For ordering information, call Dolores Gedge at the ABA, 312/988-5704.

Jack Train, FAIA Associates, Inc. has changed its name to Train Dewalt Associates, Inc. and moved into new office space at 200 N. LaSalle St.

Allen Villanueva, AIA has joined Larson Associates as senior project architect. He was employed at Murphy/Jahn and most recently, Himmel/Bonner.

The Chicago Historical Society recently appointed Scott La France curator for the Charles F. Murphy Architectural Study Center, the city's largest collection of architectural drawings and related materials. La France was co-curator of *Chicago Goes to War, 1941-45* and in 1986 supervised the move and reorganization of the architectural collection to the society's current facility.

The Chicago Architecture Foundation has appointed Ellen Haddigan director of development. Haddigan will head the organization's fund raising, donor, member and communications activities.

PROJECT SPOTLIGHT

Kirkegaard & Associates of Downers Grove is a member of the project team chosen to design the new \$80 million Maryland Center for the Performing Arts. The facility will be located on the College Park campus of the University of Maryland. Other team members include: Moore Rubel Yudell with Ayers Saint Gross of Baltimore and Theatre Projects Consultants of Ridgefield, Connecticut.

Hansen Lind Meyer's Gross Point addition at Rush North Medical Center in Skokie was featured in the March issue of *Hospitality Design* magazine. Sheila Fogel Cahnman, AIA was project architect and Dan Foltz, AIA was project designer. The Gross Point Addition will be featured at the September meeting of AIA Chicago's Committee on Architecture for Health.

COMPETITIONS

With the lease on Meigs Field set to expire in 1996, the Chicago Architectural Club is inviting architects to submit their ideas for the redevelopment of this unique site. A Grand Prize of \$1000 will be awarded and all entries will be publicly displayed beginning June 17 at I-Space and Corporate Art Source. Each participant will receive a competition package including history of site, background drawings, and other pertinent information. An entry fee of \$40 is required. For additional information, call 312/440-0633.

New or remodeled residential and commercial buildings completed between September 30, 1992 and September 30, 1994 and constructed of cast-in-place concrete, concrete masonry, precast concrete or combinations of these materials

AVA INSURANCE AGENCY, INC.

INSURANCE SPECIALISTS FOR DESIGN PROFESSIONALS

- o Professional Liability
- o Business
- o Special Programs
- o Benefits

You're a Professional... You Deserve the Best

One Tower Lane, Suite 1500, Oakbrook Terrace, Illinois 60181
(708) 571-4500 Fax (708) 571-4518

ARCHITEMPS, INC.

Quality staffing, service and solutions:

- Design/Production Drafters
 - Facility Planners
 - CADD Technicians
 - Project Managers
- Architectural, interior design and facility planning personnel on a per-project basis.
Customized employee leasing and permanent conversion available.

Call today for more information or a personal consultation.

ARCHITEMPS, INC.
1050 North State Street
Chicago, Illinois 60610.1043
Tel: 312.649.0912
Fax: 312.649.1667

are eligible to enter the **1994 Concrete Building Awards**. Judges will consider appearance and design creativity. Emphasis will be on positive environmental impact including aesthetics, function and energy efficiency. Winners will be announced in the January 1995 issue of *Architecture*. Any member of the building team may submit entries before September 30. For more information and entry forms, contact Lionel Lemay at 708/966-6200.

PROFESSIONAL DEVELOPMENT

The Chicago Regional Chapter of the Institute of Business Designers and the education committees of the Chicago and Northern Illinois Chapters of the International Facilities Management Association

are sponsoring a seminar on **Environmental Concerns**. The seminar, scheduled for 9:00 a.m. to Noon, Thursday, May 5 at the Holiday Inn/Apparel Mart in Chicago, addresses recycling, the Clean Air Act and indoor air quality. For more information, call Anne Scarlett at 312/263-6990.

◆
The Structural Engineers Association of Illinois is offering a course in the **Fundamentals of Seismic Design**, 8:00 a.m. to 5:00 p.m., May 13 through 14 at the Inn at Eagle Creek, 30 miles southeast of Decatur. Instructors are Dr. W. Gene Corley, S.E., P.E., vice president of Construction Technology Laboratories, Inc. and Dr. Phillip L. Gould, S.E., P.E., chairman of the Civil Engineering Department at Washington University in St. Louis. Advance registration is required. For more information, call SEAIO at 312/372-4198.

On May 20 from 1:30 to 6:00 p.m., the Chicago Institute for the Study of Architecture and Technology will hold a symposium on **Automation and Robotics in Construction**. The symposium will feature Dr. Thomas Bock, professor of building automation, Karlsruhe University in Germany and Mr. Takatoshi Ueno, senior research engineer at Shimizu Corporation of Japan. Dr. Bock currently directs the German Technology Transfer Center, and Mr. Ueno has developed the world's first construction robot. The symposium is sponsored in part by IIT's College of Architecture and will be held at the Graham Foundation, 4 W. Burton Place. A discussion and reception will follow the presentation. Tickets are \$30 (\$10 students). For registration information, please call Leslie Cousineau at 312/663-3500.

16



HUEY

PROVIDING REPROGRAPHIC SERVICES TO CHICAGO ARCHITECTS AND ENGINEERS SINCE 1915

MAIN PLANT 19 S. WABASH (312) 782-2226

RIVER NORTH: 435 N. LaSALLE (312) 644-2264

HAYMARKET: 652 W. RANDOLPH (312) 454-1216

NORTH PIER: 455 E. ILLINOIS, #562 (312) 321-8260

**CAD Plotter down?
Facing deadlines?
Call Huey.**

Huey Reprographics/CADD Plotting Service is your emergency source.

Complete Reprographic Services

- 24 hour 7 day week modem service up to 19,200 baud
- Our plotters support most IBM and Macintosh PC-based CAD Systems and many mainframe systems
- No monthly charge
- 400 DPI for excellent output
- Plotting on bond, vellum or mylar to meet your needs
- Full color or B&W of your CAD files
- 42" width, any length
- Aperture card printing available to 36 x 48
- Same day processing
- Technical support and consultation
- Full line reprographics house for your post plotting needs
- Canon laser (r) color copies
- Dry mounting for presentations
- Photomechanical: washoff, fixed line, silver slicks
- Pin-register overlay drafting repro specialists
- PMT stats
- Large format 5080 (r), 2080 (r) xerox copies
- Whiteprints, sepias, bid set printing
- High speed duplicating: specifications, booklet, reports
- Offset printing
- Drafting supplies
- Huey deluxe drafting tables, Diazo blueprint paper

Managing Project Teams is a two-day symposium for architects, engineers, project managers, principals, contractors and corporate design staff who are looking to avoid conflict, establish partnerships and build teams. Sponsored by the Association for Project Managers (APM), the American Society for Quality Control and Penn State University, the symposium has been scheduled for May 19 and 20 at the Sheraton Suites O'Hare Airport Hotel. For more information, call APM at 312/472-1777.

VARIOUS MATTERS

Tour guides are needed for summer afternoon tours of the city's elevated train system. Volunteers will be required to participate in a two-day training

session in May before narrating approximately three tours throughout the summer. The tours will begin Saturday, June 4 and run through Labor Day. For more information and to volunteer, call Mary Beth Herr at the Department of Cultural Affairs, 312/744-2035 by Monday, May 10.

◆ Norman Smith, a Washington, D.C. architect and architecture columnist, is soliciting examples of small space design for review and possible inclusion in a book to be published by Rockport Publishers. The book, entitled *Small Space Living Design* will be marketed to architects and interior designers as well as high-end architecture buffs. For submission requirements, contact Norman Smith or Charles George by phone at 202/364-2248 or by fax at 202/364-2252.

DO YOU NEED INFORMATION OR ASSISTANCE ON ANY OF THE FOLLOWING?

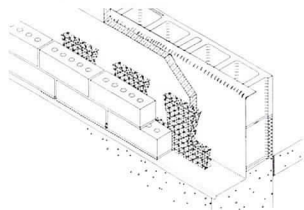
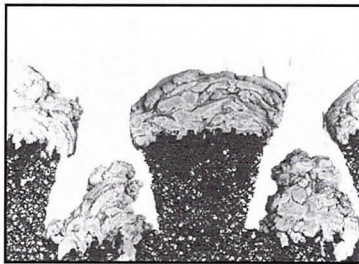
- Ornamental Plaster**
- Interior Gypsum Plaster**
- Portland Cement Plaster**
- Spray Fireproofing**
- Gunite Rock Work**
- Veneer Plaster**
- Stucco Work**
- Scagliola**
- E.I.F.S.**
- Sgraffito**
- Cast Plaster**
- Racquetball Courts**
- Hydronic Heat in Plaster**
- Electric Heat in Plaster**

**Just give us a call.
We will be happy
to serve you.**

**CHICAGO
PLASTERING
INSTITUTE**
6547 N. AVONDALE AVE.
CHICAGO, IL 60631
Phone (312) 774-4500

THE MORTAR NET™

**Absolutely eliminates weep hole blockage due to mortar droppings
Assures a successful flashing/weep hole system***



- Weep holes stay open—Mortar Net collects mortar droppings *inside* masonry cavity walls
- Fast, easy installation—requires no fasteners or adhesives, no special skills or tools
- 1" thick x 10" high x 5' long

**FOR TECHNICAL DATA AND A FREE SAMPLE KIT
OR TO ORDER THE MORTAR NET™**

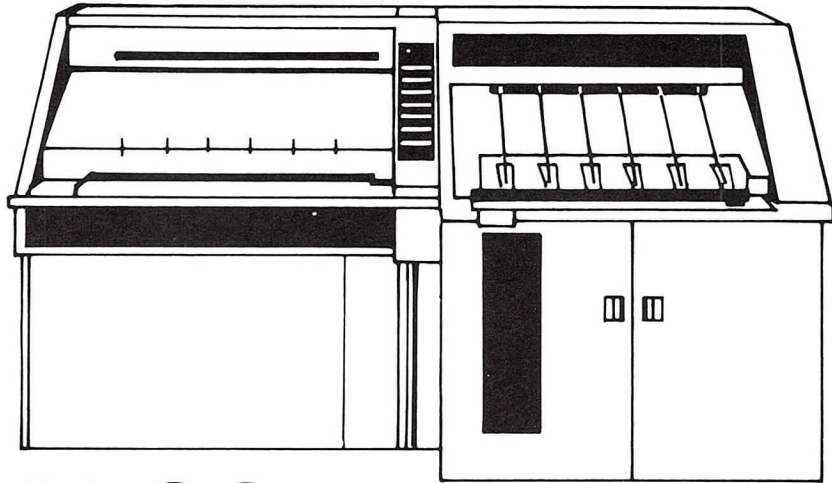
CALL 1-800-664-6638

* When properly installed.

MOSSNER now has more repro-drafting capability than anyone in the Chicago area.

FIRST IN CHICAGO

Now... 50% more capacity to enlarge and reduce drawings



INTRODUCING THE **SHACOH 36** COPIER

- Enlargements to 210%
- Reductions to 45.8%
- Increments of 1/10 of 1%
- Widths to 36"
- Variable Lengths
- Exceptional Reproduction

With the new SHACOH 36 added to our two XEROX 2080 copiers, Mossner has the most modern computer controlled repro-drafting capability in the Chicago area. The SHACOH 36 is the most versatile and the most accurate copier on the market today. And it's first in Chicago at Mossner, the largest reproduction house in the Midwest.

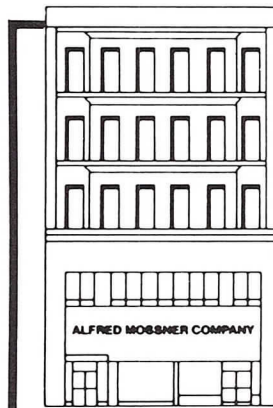
The new SHACOH 36 allows us to deliver exceptional quality copies in a shorter period of time to the exact specifications you require. You benefit with increased productivity and money savings. Compare our services. You'll see we can handle all of your repro-drafting requirements. With the greater capacity afforded by our new SHACOH 36 we have more capability than anyone in the area. Call 372-8600 for a quick pick-up and guaranteed delivery. We'll show you what service in repro-drafting is really all about.

8

Mossner 372-8600

THE REPRODUCTION PEOPLE • LARGEST IN THE MIDWEST

Mossner Building • 137 North Wabash at Randolph (across from Marshall Field's), Chicago, IL 60602



Fast one-source service for all of your reproduction requirements

PHOTOMECHANICAL SERVICES

- STAR-REPRO® Drafting Systems — for pin-bar overlay and team drafting
- Precision camera work up to 48 in. by 72 in. enlargements and reduction to 10 times
- Autopositives
- Scissor drafting
- Photo drafting
- PencilTone® reproductions
- Xerox 600 enlargements from 35mm microfilm
- Xerox 2080—24"
- Shacoh 36—36" translucent vellum or Mylar intermediates, and paper prints—reduced or enlarged

OFFSET PRINTING

- Specification sheets and booklets
- MAGI-COPY® fast printing service — ideal for architectural and engineering specifications

**105mm and 35mm MICROFILM SERVICE
DRAFTING SUPPLIES AND FURNITURE**

**BLUE PRINTS,
WHITE PRINTS,
SEPIA INTERMEDIATES
ON PAPER OR MYLAR**

WE DO IT ALL UNDER ONE ROOF

1 May

Chicago Women in Architecture. Annual Brunch. Martha Lampkin, FAIA. 11:00 a.m. Hyatt at Printer's Row/Prairie Restaurant. \$30 members/\$35 non-members. Information: 312/477-2370.

LPCI. 12th Annual Historic Church Tour. Bus leaves at 12:15 p.m. from Monadnock Building, 54 W. Van Buren St. Advanced tickets, \$20 LPCI members/\$23 non-members; \$25 at the door. Information: 312/477-2370.

Wright Home and Studio Foundation. Guided Victorian Walking Tour. 2:00 p.m. Oak Park Visitors Center, 158 Forest Ave. \$6 adults/\$4 seniors, youth. Information: 708/848-1500.

2 May

Graham Foundation Lecture. Viva Las Vegas. Neil Levine. 8:00 p.m. 4 W. Burton Place. Information: 312/787-4071.

4 May



Planning and Urban Affairs Committee. Noon. AIAC Board Room.

CAF Lecture. Contrasting the Old and the New. Lonn Frye, AIA. 12:15 p.m. CAF Lecture Hall, 224 S. Michigan.

AIA Chicago's Convention Delegates. Organizational Meeting. 5:30 p.m. AIAC Board Room. Information: 312/670-7770.

10 May



Historic Resources Committee. 5:30 p.m. Commission on Chicago Landmarks, 320 N. Clark St., Rm. 516. RSVP: Gunny Harboe 312/836-7700.

Corporate Architects Committee. U of C Business School Tour. Noon. Lobby of the Graduate School of Business at Cityfront Center. Mail or fax registration on page 3 to AIAC.

11 May



CAF Lecture. Architect Edward Dart. Susan Dart, speaker. 12:15 p.m. CAF Lecture Hall, 224 S. Michigan.

Architecture for Health Committee. Technical presentation on Children's Memorial Specialty Pediatric Center. 4:30 p.m. AIAC Board Room. Information: Terry Hoffman 312/360-4301.

Young Architects Committee. Architectural Criticism. Ed Lifson and Ed Keegan, AIA. 6:30 p.m. AIAC Board Room. Mail or fax registration on page 3 to AIAC.

Graham Foundation Lecture. Collages of Mies van der Rohe. Alan Hess. 8:00 p.m. 4 W. Burton Place. Information: 312/787-4071.

12 May



Computer Committee. McGraw-Hill's Sweet's Electronic Publishing. 5:30 p.m. 2 Prudential Plaza, 180 N. Stetson Ave., Suite 700. Mail or fax registration on page 3 to AIAC.

UIC School of Architecture. Annual Alumni Dinner. 5:30 p.m. Como Inn, 546 N. Milwaukee. Reservations required: 312/996-3335.

13 May



1994 AIA Chicago Design Awards. Submission deadline for Unbuilt Design and Interior Architecture Awards.

AIA National Convention opens in L.A. Information: 202/626-7395.

14 May



Architecture for Health Committee. Tour of Children's Memorial Specialty Pediatrics Center in Westchester. 10:00 a.m. Information: Terry Hoffman 312/360-4301.

17 May



Committee on the Environment. 5:30 p.m. AIAC Board Room.

18 May



Construction and Industry Affairs Committee. 8:30 a.m. AIAC Board Room.

CAF Lecture. Frank Lloyd Wright's Imperial Hotel. Lyman Shepard. 12:15 p.m. CAF Lecture Hall, 224 S. Michigan.

Design Committee. 1994 Design Awards planning. 4:30 p.m. Chicago Cultural Center, 78 E. Washington, 1st Fl. Cafe (Randolph Street entrance). Information: Alan Armbrust 708/940-9600.

AIAC 125th Anniversary Lecture. Living History. Walter Netsch, FAIA and Bertrand Goldberg, FAIA; Stephen Wierzbowski, moderator. 5:30 p.m. Chicago Cultural Center, 78 E. Washington, 2nd Fl. theater (Randolph Street entrance).

20 May



1994 AIA Chicago Design Awards. Submission deadline for Distinguished Service, Firm and Young Architect Awards.

21 May

Wright Home and Studio Foundation. Wright Plus housewalk. \$25 members of Home and Studio Foundation/\$35 non-members. Information: 708/848-1500.

24 May



Office Practice Committee. Determining cost-based fees. 5:30 p.m. AIAC Board Room. Mail or fax registration on page 3 to AIAC.

25 May



CAF Lecture. What's the Deal with the New Toys R Us and the Chicago Building on State Street? Marty Stern. 12:15 p.m. CAF Lecture Hall, 224 S. Michigan.

Planning and Urban Affairs Committee. Chicago Zoning and Planned Development. 5:30 p.m. AIAC Board Room. Mail or fax registration on page 3 to AIAC.

26 May



Technical Committee. Architectural Acoustics. Victoria Cerami, Cerami Associates New York. Noon. Chicago Bar Association, 321 S. Plymouth Court. \$7.50 includes lunch and program. Buy lunch ticket in 1st floor membership office.

Interior Architecture Committee. 5:30 p.m. AIAC Board Room.

27 May



1994 AIA Chicago Design Awards. Submission deadline for Divine Detail, Distinguished Building and 25 Year Awards.

30 May



AIA Chicago. Closed for Memorial Day.

FOCUS

BOARD OF DIRECTORS

PRESIDENT

John H. Nelson, AIA

FIRST VICE PRESIDENT

William D. Bradford, AIA

VICE PRESIDENTS

Gigi McCabe-Miele, AIA

John M. Syvertsen, AIA

SECRETARY

Arthur G. Salzman, AIA

TREASURER

James C. Jankowski, AIA

DIRECTORS AT LARGE

Through December 1995

Susanne Roubik, AIA

Thomas R. Samuels, AIA

DIRECTORS AT LARGE

Through December 1994

Holly Gerberding, AIA

Joel V. Stauber, AIA

DIRECTORS

Through December 1994

Alan Armbrust, AIA

Richard E. Fencl, AIA

T. Gunny Harboe, AIA

Brian Jack, AIA

Leonard Koroski, AIA

Janet Hahn Lougee, AIA

Thomas M. Okarma, CPCU

Robert C. Robicsek, AIA

Douglas B. Ross, AIA

Steven S. Tousey, AIA

PAST PRESIDENT

Linda Searl, AIA

ASSOCIATE DIRECTOR

Beth Ingram Davis

PROFESSIONAL AFFILIATE DIRECTOR

Michael F. Petersen

AIA ILLINOIS DELEGATES

Dirk Danker, AIA (Through 12/94)

Lou Garapolo, AIA (Through 12/95)

Gaines B. Hall, FAIA (Through 12/96)

Kathleen Nagle, AIA (Through 12/94)

Leonard A. Peterson, AIA (Through 12/96)

Michael Youngman, AIA (Through 12/94)

AIA ILLINOIS ALTERNATE

Jon B. Masini, AIA

Virginia Kinnucan, AIA

AIA CHICAGO STAFF

EXECUTIVE DIRECTOR

Alice Sinkevitch

FOCUS EDITOR/ADVERTISING SALES

Susan Nelson

PROGRAM DIRECTOR

Amy Gold

MEMBERSHIP SERVICES/ OFFICE ADMINISTRATOR

Cynthia Burton

FINANCIAL MANAGER

Crystal Gagler

PUBLIC INFORMATION/DOCUMENTS

Eirenne Glavin

DOCUMENTS

Kathy Banks

AIA Chicago

A Chapter of the American
Institute of Architects
222 Merchandise Mart Plaza
Suite 1049
Chicago, Illinois 60654
312 670-7770
Fax 670-2422

Second
Class
Postage Paid
at Chicago, IL

