

CHICAGO CHAPTER AMERICAN INSTITUTE OF ARCHITECTS OCTOBER 1991

CHICAGO - You're Tops



CCAI A FOCUS

EDITOR:
Annette Kolasinski
EDITORIAL COMMITTEE:
John Eifler, AIA
Linda Searl, AIA
Leonard Peterson, AIA
Jane Lucas, Executive Director

The CCAIA FOCUS (ISSN 0899-871X) is published monthly except for a combined July/August issue by the Chicago Chapter, AIA, 53 W. Jackson Boulevard, Suite 350, Chicago, Illinois 60604. Second class postage paid at Chicago, Illinois

POSTMASTER:
Send address changes to CCAIA FOCUS Chicago Chapter, AIA, 53 W. Jackson Boulevard, Suite 350, Chicago, Illinois 60604.

Except where noted the opinions expressed in the CCAIA FOCUS reflect those of the author only and do not reflect or represent the position of the Chicago Chapter AIA or the American Institute of Architects. Advertising of products and services appearing in the CCAIA FOCUS does not constitute endorsement by the Chicago Chapter AIA or the American Institute of Architects.

Cover: Chicago, from the Post Office to Bloomingdale's, 1990. *Aerial photography:* Lawrence Okrent. In a survey conducted this summer by the AIA through their newsletter, MEMO, Chicago is picked as the Best American City in terms of architectural quality and innovation.

CCAIA FOCUS

Read All About It

GETTING A GRIP ON FISCAL REALITY - Pres. Len Peterson looks at the Chapter's financial picture Page 3



Page 5..... FOCUS ON PROGRAMS
Strategic Project Management
CSI/AIA Seminars
Landmark Interiors Tour

Page 7..... CHICAGO - HOME OF MANY GREATS. AIA Survey respondents pick their favorites

MEMBERSHIP SERVICES..... Page 8 .
New department. This month we encourage use of Chapter Job Notebook. Also, have you changed jobs in the last year? A survey lets you tell us about it

REGIONAL DIRECTOR'S REPORT. Director Cynthia Weese talks about the budget and the Gold Medal Page 11



Page 13 PRACTICE POINTERS.
Employee Buyout. Insurance as a Vehicle

Page 14..... THE NOTEBOOK

THE CALENDAR..... Page 22

Getting a Grip on Fiscal Reality

This summer the Chapter's Board of Directors debated the possible increase in its membership dues. At the Board's August meeting, the proposal for a new dues structure was passed. Membership categories that are affected by the increase are AIA and Professional Affiliates, whose dues have been raised from the current level of \$110 to \$135 per year. However, dues for Associate members (unlicensed architects) have been structured to recognize the ability to pay relative to longevity in the profession. Thus, Associates who have been members one to three years will see a decrease of \$20 (from \$85 to \$65) on their invoice. Those Associates who are in their fourth and fifth years of membership will see an increase of \$5 per year, while Associates who have been members six years or more will see an increase of \$40 per year, over the current dues rate of \$85 per year.

Taking a Look at Our Finances

I am sure you are now asking: "If the economy is suffering and our profession is struggling with financial hardship, why is it necessary that the Chapter increase in its membership dues?" The best way to respond to this question is to take note of the current 1991-92 Chapter budget relative to dues and non-dues income, and to anticipated expenses.

This year's projected dues and miscellaneous income (exclusive of programs, publications, and document sales) is \$288,000 against fixed expenses of \$355,000 for a net operating loss of \$67,000. This loss is projected to be offset by net income from document sales of \$32,000 and net income from programs and publications of \$35,000 just to break even, with no increase in necessary reserves. Although this may look o.k. on paper, it should be noted that accounts on publications (*Annual*,

ArchiPages, *FOCUS*, and others) are usually negative in that they are primarily a service and rarely can be non-subsidized. *Archipages* does have the potential to be a revenue generator; however, research with other associations indicates that only major trade publications can be consistently profitable (those with budgets over \$100,000) and then only after a long start-up period. It is, therefore, not realistic to think that publications can be a dependable source of non-dues income. Historically, Chapter programs have been a breakeven proposition and often require underwriting to achieve positive accounting. Committee leaders are finding strong reluctance to fundraising in today's economy. Placing this extraordinary burden on volunteer committee work and maintaining affordable program costs has become increasingly difficult.

Planning Meets Head On With the Unexpected

There has been no increase in local chapter dues for the past five years, even though the economy experienced substantial inflation over that period. Previous AIA Chicago boards should be commended for "holding the line" as well as they did. In hindsight, modest inflationary increases per annum may have been a better policy; however, hindsight is 20/20. Previous boards had envisioned the development of a regional convention to help offset increasing operating costs and thereby avoid the need for an increase in dues revenue. *ArchiFair* was, in fact, expected to make its debut this fall.

Although the Chapter can take pride in many past accomplishments, not all planning manifests itself in success. As planning proceeded last year, the Chapter was confronted with the fact that another major allied convention, RIII (Restoration, Renovation & Remodeling), was planned for the same time at McCormick Place and would include many of the same booth vendors necessary to have a financially successful convention. A decision was then made to join RIII for a combined event

where AIA Chicago would develop and present an educational seminar track. All was going well when RIII, without advance warning, cancelled their plans, citing slow "booth sales" in a depressed economy. Anticipated net revenue for non-dues income of \$25,000 to \$40,000 would not materialize. Because of the national convention taking place in Chicago in the spring of 1993 and all of the planning activities associated with an event of that magnitude, future planning for a regional convention had to be postponed until after the national convention takes place.

How Do We Compare?

In light of the change in the dues structure, how does the Chicago Chapter compare to other large city chapters? Fair evaluation requires a composite comparison of local and state dues, in that together they represent the additional annual cost to individuals above the national AIA dues. Furthermore, the work and structure of state and local chapters is entwined and mutually dependent on one to the other.

Current Illinois Council dues are \$115 per year. When added to the adjusted local chapter dues of \$135 per year, the aggregate of \$250 becomes the comparable unit. New York is currently at \$271/year, Boston at \$257/year, Los Angeles and Pittsburgh are at \$305/year, Philadelphia is at \$265/year, Miami at \$295/year, Indianapolis at \$390/year, and Detroit and Dallas are at \$240/year.

Your Support Brings Benefits to All

Although the prospect of any increase in membership dues can be a hardship, the need to support the work of the Chapter has never been greater. The challenge of the 1990s, and the prospects for change in our profession require the increased strength of the entire institute. Excellent programs and committee work are continuing, thanks to our membership's financial support and a considerable amount of volunteer time and effort expended by a few for the benefit of all.



Leonard A. Peterson, AIA
President

DESIGN

**The "Turner Way"
The "Erdman Way"
The "McClier Way"
The "Stein Way"**

Dirk Lohan, Bernie Babka, Cindy Weese, Mike Knize, Grant McCullagh, Mike Szkatulski, Marshall Erdman, Steve Stein, Jerry Pientka, Tom Okarma and a representative from the G.S.A.

**Elevating Design in
Design/Build:
Methods Opportunities
and Realities**

Sponsors for this AIA Conference include the Hotel Inter-Continental, McClier, Mellon-Stuart, Pepper Construction, Reed Illinois Corporation, Walsh Construction, Harry Weese Associates.

**A One-Day Conference
Sponsored by the
Chicago Chapter AIA
Saturday,
November 16, 1991
8:30-4:00**

**Hotel Inter-Continental
505 North Michigan Ave
A Design/Build Project**

Name	Firm
Address	City State Zip
Credit Card Type & No.	Exp. Date
Signature	

Fax 312.347.1215
Telephone 312.663.4111

Hear representatives from Turner Construction Company, McClier, Stein & Company, and Marshall Erdman argue the merits of doing design/build "their way." See what your opportunities might be with the GSA from James Steward, Director of the Office of Design and Construction in Washington, and companies like Walsh Higgins. Learn about contract, liability and insurance issues from Greenberger Krauss & Jacobs and AVA Insurance Agency. And learn the architects' perspective from Lohan Associates and Hammond Beeby and Babka. You will be led through the day by Cynthia Weese, who was President of the Chicago Chapter AIA during the national debate on Design/Build.

AIA Members \$85.00
Associate Members 60.00
Non-members 100.00

Build

FOCUS on PROGRAMS

SIGN
ME
UP



Strategic Project Management

Hone Your Skills at What Architecture Really Is About

Sat., Oct. 12
8:30 a.m. - 5 p.m.
Chicago Athletic Association
12 S. Michigan Ave.

Fee (includes lunch):

AIA - \$265 (\$195 for each additional registrant from same firm); Assoc. - \$195; Non-Members - \$295

Speakers: David Haviland - Rensselaer Institute and James R. Franklin, FAIA, AIA Resident Fellow

Projects are the lifeblood of an architecture firm. How well are you managing yours? Looking at each project, are you doing the job as well as you can? Looking at all of your projects, are you building them into the kind of practice you seek to have?

These questions have never been more important. As your clients and your projects change - sometimes dramatically - it is essential that you look at project management strategically. In other words: How do you shift your focus from acquiring projects to acquiring - and keeping - clients? How can you build project relationships and teams to assure "buying in" at every level? How can you organize the people, the contracts and the work to achieve the results both you and your client are seeking? How can each project become part of a larger strategy for developing your practice?

This workshop will address each of these questions by combining a day-long case study and a number of mini-lecture sessions on project management theory and techniques. To take the best advantage of the workshop, you should have some project management experience,

whether or not you are called a "project manager."

Research reveals that consistently successful, star architecture firms achieve both success and excellence by primary focus on their projects. They say their "secret" is paying attention to projects. Their ratio of direct labor - hours chargeable to projects - is probably about the same as yours. So, perhaps a big part of their secret lies in organizing themselves, their project teams and clients to make those hours really count.

The challenge for the firms in the '90s is to become more project oriented. You have a unique opportunity now to spend a day doing just that with two top facilitators. Already top resources for architects across the country, David Haviland of Rensselaer Institute and James R. Franklin, FAIA, a Resident Fellow for the Institute, have agreed to join forces now as co-instructors for a limited time only. This will be one of only six workshops they have agreed to lead. Haviland literally wrote the book. His project management publications in the early '80s for AIA are still the standard in the profession. He capped that by authoring a chapter for and editing the entire 1987 *Architects Handbook for Professional Practice*. He's just back from six months research on how architecture is being done in Great Britain. Franklin has worked closely with Haviland throughout the Handbook process, and he has led over 30 workshops on practice management and design across the country in the last few years.

If you're a project manager or a firm principal with a hands-on role in running projects, you don't want to miss this. It will be a high energy day packed with infor-

mation you can immediately put to practical use. You'll be working with other architects like yourself, sharing in interactive exercises designed to improve yourself, your projects, your firm, and your bottom line.

Attendance is limited so sign up now.

Look for a mailing from the National AIA. For additional information, please contact Kathleen Landing, Program Director, AIA Chicago, 312/663-4111.

Tour of Landmark Interiors

Sponsor: Interior Architecture Committee
Wed., Oct. 23, 5:30 p.m.
(Begin at Continental Bank, 231 S. LaSalle)
\$8, members; \$10, non-members/\$5, students.

Take advantage of this rare opportunity to tour three recently renovated Chicago landmark interiors. Your hosts, the Interior Architecture Committee, have made arrangements for you to tour the Continental Bank project, by SOM, the Federal Reserve, by Holabird & Root, and the Rookery, by McClier.

At each location you will hear the inside details of the project issues and design solution as you are guided by the design architect through the site. At the last project, refreshments will be served courtesy of the KNOLL GROUP.

Space is limited, so you will want to guarantee your chance to see these landmarks by calling the Chapter, 312-663-4111, to reserve your place on the tour.

Kevin R. Sherman, AIA
Program Coordinator

— **Strategic Project Management**
AIA - \$265 (\$195 additional from same firm); Assoc. - \$195; Non-member - \$295

— **Landmark Interiors Tour**
\$10 members/non-mem.; \$5 students
Pay at door if you like, but RSVP by calling Chapter

— **CSI/AIA Breakfast Seminars**
\$9 each; \$10 at door; \$35 the series
— 1) Owner's/Contractor's Insurance (10/23)
— 2) Substitutions: What, How & When (11/6)
— 3) Guarantees, Warranties, Bonds, or the UCC?(11/20)
— 4) Conflict Resolution: How to Stay Out of Court (12/4)

— **Son of Chill - Job Seekers Lunch.** Free, but RSVP.

— **Design/Build Seminar**
\$85, AIA members; \$60 Assoc.; \$100 non-mem.

Check enclosed: \$ _____
Charge to: ___ Visa, ___ MC,
___ Amer. Exp.

Card # _____

Expiration Date _____

Authorizing Signature: _____

NAME: _____

FIRM: _____

ADDRESS: _____

CITY: _____

STATE/ZIP _____

Mail this form to: AIA Chicago,
53 W. Jackson Blvd., #350,
Chicago, IL 60604 or
FAX IT: 312/347-1215

JOIN A COMMITTEE

Check off the committees that are of interest to you, complete and mail this form, and you will be contacted.

- Chicago by Design
- Computer
- Corporate Architects
- Design
- Education
- Committee on the Environment
- Government Affairs
- Historic Resources
- Housing
- Interior Architecture
- Architecture for Justice
- Membership
- Office Practice
- Planning/Urban affairs
- Professional Affiliates
- Public Relations
- Real Estate
- Student Affairs
- Technology
- Young Architects
- 1993 AIA Convention in Chicago

NAME:

FIRM:

ADDRESS:

CITY:

STATE/ZIP:

DAYTIME PHONE:

Membership Category:

- AIA
- Associate
- Professional Affiliate
- Student Affiliate

Mail this form to:
AIA Chicago
53 W. Jackson Blvd., #350,
Chicago, IL 60604
or
FAX IT: 312/347-1215

Legal Aspects of Architecture

CSI/AIA Fall Breakfast Seminars

8-8:30 a.m., break-
fast/registration

8:30-9:15 a.m., program
9:15 a.m., questions and
answers

Chicago Bar Association
321 S. Plymouth Court
\$9 each (\$10 at door), \$35
for series

OCTOBER 23

Insurance: Owner's/ Contractor's Insurance

Speaker: James G. Stewart,
V.P. - Sedgwick James Group
Service Inc.

Issues: What advice can an architect give?; Indemnification for consultants and yourself; How to handle errors and omissions; What is "proper," "timely," "reasonable"?

NOVEMBER 6

Substitutions: What, How and When

Speaker: Gary Betts -
Hansen, Lind, Meyer, Inc.
Issues: How to allow substitutions in the specifications; How to evaluate them in terms of time and cost; What do you do when you can't find what you want on time?; How do you substantiate your intuitive rejection?

NOVEMBER 20

Guarantees, Warranties, Bonds, or the UCC?"

Speaker: Werner Sabo, AIA,
and James Zahn, AIA - Sabo
and Zahn

Issues: When should an owner rely upon a guarantee, a warranty, a bond, or the Uniform Commercial Code?; How do you evaluate which would be the best coverage for your client?

DECEMBER 4

Conflict Resolution: How to Stay Out of Court?

Speaker: Steve Stein - Green-
berger, Krauss & Jacobs

Issues: Precautions to prevent disputes; Methods to resolve disputes before going to court.

If you wish more information on the series, you may call Terry Lallak, 312-554-1400 or Monique Barwicki, 312/744-8691.

Computer Committee Information Meeting

Thurs., Oct. 24, 5:45 p.m.
Chapter Board Room

The Computer Committee will hold an information meeting when presentations for the 1991-92 year will be discussed.

Many people have expressed interest in becoming more involved with the committee. This meeting will be an excellent opportunity for interested AIA members to express their views about the Computer Committee's goals for 1991-92.

Michael D. Goff
Committee Chair

Redevelopment and Reuse Roundtable

**Sponsor: Real Estate
Committee**
Wed., Nov. 6, 5:30 p.m.
Location: TBA

A panel of prominent redevelopment professionals and business executives will explore the process and issues of redevelopment. Current opportunities and high interest among owners, architects, brokers, attorneys, and users/tenants in redevelopment of existing buildings promises an engaging evening.

Hypothetical situations illustrating the redevelopment process will be discussed, drawing on the various panel member's actual experience and differing interests. Through the discussion you will learn how to become involved in the process. The location of the program will be announced. Watch for a notice in the mail.

Fung Chin, AIA
Program Coordinator

Chapter Offers Students Career Day in Architecture,

On Saturday October 19, the Chicago Chapter will conduct its sixth annual Career Day in Architecture in the Stock Exchange Trading Room of the Art Institute of Chicago. The National Institute for Architecture Education (NIAE) is a cosponsor of the program.

Beginning at 9:30 a.m. in the Rubloff Auditorium with an overview of architectural education and the profession, by Chicago Chapter President Leonard Peterson, the day will include information on various types of college programs, licensing, and information on the broad range of architectural careers available to graduates.

A panel of architects will discuss various aspects of the profession. In addition there will be a presentation on the types of programs offered at accredited schools, as well as alternative options. Students and parents will then break into small group discussions where individual questions can be asked. Group discussion topics are: The Profession of Architecture, Alternative Careers in Architecture, Architecture Careers for Women, Architecture Education: the Parent's View.

More than 20 colleges with architecture programs will be represented at stations in the Trading Room from 10:30-2 p.m. Last year over 350 students attended the program from as far away as Iowa, Michigan, Indiana and downstate Illinois.

The program is free to all High school and college students. Parents, teachers and counselors are invited. For reservations or further information, interested persons should call (312) 663-4111.

To attend the events, please use the Columbus Drive Entrance to the Art Institute at Columbus and Monroe. Parking is available at the Monroe street City of Chicago Parking lot (entrance on Columbus Drive just west of Monroe).

Jane Luca
Executive Director



Chicago - Home of Many Greats

They were drawn to our "onion field" - those who would become or were well on their way to becoming great architects. They gave shape to our city, and the metropolis came to be considered the capital of American architecture. One hundred and twenty years since the Chicago Fire offered architects and engineers a magnificent opportunity, Chicago reigns as "the best American city in terms of architectural quality and innovation." Thus states the announcement of the results of a survey conducted among members by The American Institute of Architects. The others? New York City ranked second, followed by San Francisco, Boston, Washington, D.C., Columbus, Indiana, Portland, Oregon, Seattle, Philadelphia, and Minneapolis.

Chicago Projects Stand Out

Not only did Chicago head the list of Top American Cities for Architectural Quality and Innovation, but you will find us on other lists from the survey, which through the June *Memo* (the newsletter of The Institute), called for members of the AIA to express their opinions. Dennis Smith, of the AIA Public Affairs office, pointed out for the FOCUS that the survey showed "good regional distribution."

Among the Ten Best Works of American Architecture completed since 1980 are **United Airlines Terminal 1** (1987), Murphy/Jahn Architects, which ranked second; **333 Wacker Drive** (1983), Kohn Pedersen Fox/Perkins & Will, in the fifth position; and the **State of Illinois Center** (1985), Murphy/Jahn Architects and Lester B. Knight & Associates, placing tenth. Completing the list are: #1, Thorncrowne Chapel, Eureka Springs, Arkansas (1980), Fay Jones & Associates, Architects; #3, High Museum of Art, Atlanta (1983), Richard Meier & Partners; #4, Vietnam Veterans Memorial, Washington, D.C.

(1982), Maya Ying Lin, designer, and Cooper-Lecky Architects, P.C., Architects; #6, Master Plan for the Community of Seaside, Florida (1982), Andres Duany and Elizabeth Plater-Zyberk Architects and Town Planners, with special consultant Leon Krier and Robert Davis, Ernesto Buch, Teofilo Victoria, Luis Trelles, Victoria Casasco, and Daniel Broggi; #7, The Humana Building, Louisville, Kentucky (1985), Michael Graves Architect; #8, The Museum of Contemporary Art, Los Angeles (1986), Arata Isozaki & Associates; #9, World Financial Center/Winter Garden at Battery Park City, New York City (1987), Cesar Pelli & Associates.

Jahn on Top Ten List

There's more good news for Chicago, which the small article from Associated Press in the Saturday, September 7, Chicago *Sun-Times* did not cover (of course, by the time our monthly publication is distributed, Paul Gapp will most likely have made his own comments). And that is that Helmut Jahn is among those considered by survey respondents to be one of the Ten Most Influential Living American Architects.

On that list, in ranking order, are: I. M. Pei, FAIA; Robert Venturi, FAIA; Charles Moore, FAIA; Michael Graves, FAIA; Frank Gehry, FAIA; Philip Johnson, FAIA; Richard Meier, FAIA; Fay Jones, FAIA; **Helmut Jahn**, FAIA; Cesar Pelli.

Greatest All-Time Works

Fallingwater, Frank Lloyd Wright's 1936 residential masterwork in Bear Run, Pennsylvania, was the survey participants clear-cut choice for the greatest all-time work of American architecture.

Chicago's Helmut Jahn, his United Airlines Terminal I Complex at O'Hare and State of Illinois Center figure prominently in results of AIA survey where architects select the best of American Architecture.

Fallingwater also ranked first on an AIA survey conducted in 1985 among Institute Fellows. More on this list later.

Here are the Ten All-Time Works of American Architecture. They are, after Fallingwater, the University of Virginia, Charlottesville, Virginia (1826), Thomas Jefferson; Chrysler Building, NYC (1929), William van Alen; Monticello, Albemarle County, Virginia (1775-remodeled 1808), Thomas Jefferson; Dulles International Airport, Chantilly, Virginia (1963), Eero Saarinen; Gateway Arch, Jefferson National Expansion Memorial, St. Louis (1965), Eero Saarinen; **Robie House**, Chicago (1909), Frank Lloyd Wright; Seagram Building, NYC (1957), Ludwig Mies van der Rohe in association with Philip Johnson; Trinity Church, Boston (1877), H. H. Richardson; the East Building of the National Gallery of Art, Washington, D.C. (1978), I.M. Pei.

Greatest American Architects

And who did the survey respondents select as the Top All-Time American Architects? Frank Lloyd Wright, who designed more than 500 projects during his long and colorful career, received votes from 99% of those surveyed. Louis Henri Sullivan ranked second, then Henry Hobson Richardson, Louis Isadore Kahn, Thomas Jefferson, Eero Saarinen, Ludwig Mies van der Rohe, Ieoh Ming (I.M.) Pei, Bernard Maybeck, Frank Furness.

We promised you the results of that earlier survey (1985), in which 170 Fellows of the Institute picked their Ten Best Buildings in the United States. Not only was Fallingwater at the top in 1985, but seven buildings selected in 1985 appear on the 1991 list. Robie House is one of those seven. The 1985 list: Fallingwater, Seagram Building, Dulles Airport, University of Virginia, **Robie House**, Trinity Church (Boston), East Building of the National Gallery of Art, Rockefeller Center, Johnson Wax Building, Monticello.

Son of Chili

Free Lunch for AIA Job Seekers on Friday, October 25

In December 1990 and January 1991, the Chicago Chapter gathered out-of-work architects to discuss job-hunting strategies. The December "Chili Lunch" was a forum for architects to share their stories and hear from AIA members who had weathered previous downturns. Sheila Cahnman, AIA, told how fresh out of architecture school in the early '80s, she called over 250 firms before she found the position at Hansen Lind Meyer, which she still holds. She also revealed how the networking opportunities of professional associations helped her to land that job. John Syvertsen, AIA, related how a tem-

porary job, which he got because he could speak French, gave him a lead that kept him in Chicago, just one day before he was to move to Wisconsin. Jack Hartray, FAIA, provided stories about his experiences of landing in the job market involuntarily after the completion of big projects at SOM and C.F. Murphy, and how jobs out of the profession could make one a better architect.

In January, a panel of architects in non-traditional jobs described opportunities in their areas. Participants heard about where the job market is, and found out how to write resumes and interview effectively. Architects from local firms told how they evaluate applicants.

Now, on October 25, at "Son of Chili" lunch, we want to find out how our job seekers are doing. We will have resource people there from firms that

are hiring, architects who used unique strategies for finding jobs, and more information on how to job hunt effectively. **Lunch (chili from Jacobs Brothers) starts at noon in the Chapter Board Room and will last until about 1:30. There is no charge for AIA or Associate members; \$5.00 admits non-members.**

Even if you can't attend, please fill out the questionnaire on the next page to let us know how you are doing.

We need a reservation from you by Wednesday, October 23. Call 312/663-4111, or check the space for this program on the "Sign Me Up" form on page 5. Space is limited, so reserve soon if you plan to come. If your plans change, please let us know so someone else can take your place.

**Jane Lucas
Executive Director**

HIRING?

GET A TOP NOTCH STAFF WITHOUT PLACING A NEWSPAPER AD

The Chicago Chapter has a job listing notebook and a file of architects and other professionals seeking work. Send us your job listing by FAX (312/347-1215) or mail and it will be seen immediately by the steady stream of architects who come in to look at it. We have a file of resumes from those job seekers, which includes a rich selection of well-qualified professionals who are available because of the downturn in this economy. You can come in to look at the file, or, for a modest mailing charge, have resumes sent to you from the experience category that you need. Call Melanie Brown for further information: 312/663-4111.

With just a phone call, your job listing can be withdrawn as soon as you hire someone. It also helps us to know what the job situation is out there. Every job opening is good news, and it provides us with more concrete answers to the calls from the media and from job seekers in other parts of the country who call to ask, "Should I come to Chicago to find work?"

AIA Firms - Please Complete

This information is extremely valuable to the Chapter office. You need not reveal the name of your firm.

Firm size: Less than 5; 6-25; more than 25

Have you had any layoffs related to economic conditions? Yes No. How many persons were terminated due to economic conditions? _____. How many persons were terminated due to project completion _____. What jobs are available in your firm? (Please attach a list and description) Will you be filling senior level positions for which you will not be advertising? Yes No. We have positions available but have more resumes than we can handle Yes No. We have new jobs which requires additional staff but are not ready to advertise Yes No.

(Optional) Name of firm _____

Phone # _____ Contact Person _____

Please return to Chapter Office. by mail or FAX 312/347-1215.

SURVEY

FOR JOB SEEKERS AND INDIVIDUALS WHO HAVE CHANGED JOBS IN THE LAST YEAR.

Please take the time to fill out this form. Your information is valuable to us in helping us to plan services for our job seeking members.

1. What is your job status? Unemployed Changed jobs in the past year

2. Reason for leaving your previous job: Layoff Found a better job Other

3. If the firm terminated your job, what was the reason:
 Economic hardship
 Completion of special project
 Other

4. Which of the following services would be most helpful from the Chicago AIA: More job listings Individual job counseling Family therapy Information about alternative careers Training on resume preparation, self-marketing Use of word processing and copy equipment.

5. If you found a job, how long did it take: two weeks or less 3-6 weeks more than 7-12 weeks more than 3 months.

6. How did you find the job:
 Newspaper ad AIA Chicago job file National AIA Job listing service Networking Recruitment agency Cold calls to architecture firms Other

Please sign me up for Chili Lunch II on October 25

(Optional)
Name: _____

Address: _____

Daytime phone: _____

Return to Chapter Office by mail or FAX 312/347-1215.

NEW MEMBERS

AIA

Richard M. Swanson, R. M. Swanson & Assoc.; Jeffrey M. Genovese, Kraft General Foods; Kirk R. Stevens, Hammond Beeby & Babka; Thomas C. Psiharis, Trident Construction Company; Bill Latoza, Chicago Park District; Ronald L. Neggess, OWP&P; Victor C. Wolbrink, Matthei & Colin Associates; Richard E. Sipin, K+CZL; Ellen B. Dickson, Florian Wierzbowski Architects; Patricia K. VanderBeke, Decker & Kemp.

Associate

John P. Kouchoukos, Ross Barney & Jankowski; William M. Jerman III, Loebel Schlossman & Hackl; Joseph Geronimo; Robert Wroble, Legat Architects; Simon Tomkinson, Johnson and Wilson Architects; Brett Miller, Styczynski Walker & Associates; Robert A. Plichta, Legat Architects; John Dzarnowski, Williams/Pollock/Associates, Ltd.

Upgrade to AIA

James R. Kreps, Green Hiltcher Shapiro; Christopher F. O'Brien, VOA Associates.

Reinstated

James F. Ratteree, AIA, McClier.

Transfers

From North Carolina Chapter, Richard L. Merrifield, AIA, McBride & Kelley Architects; from Baton Rouge, Louisiana, David M. Willingham, AIA, Montgomery Ward; from Fort Wayne, Indiana, Timothy J. Kent, Associate member, Thomas Hickey & Associates; from Northern Kentucky Chapter, Douglas J. Switzer, Associate member.

IN MEMORIAM



SUSAN J. DEE

The many people who knew and worked with Susan Dee share a great sadness at her death at age 38.

Susan occupies a special place in my memory for her spectacularly energetic chairmanship of the first Chicago by Design tour in 1986. Working with a committee of diverse volunteers Susan put together a tremendously successful event attended by over 600 people. Susan had the ability to inject volunteers with her enthusiasm and organizational abilities, and she ran some of the shortest and most productive meetings I have ever seen. The second Chicago by Design tour was a special challenge for her because that same weekend, she was moving JMB Realty Corp. into their new offices at 900 N. Michigan Ave. Yet tour and move went off without a hitch.

Soon after, Susan started her own firm, Facility Relocation Management, and was responsible for major moves such as Amoco Corporation and Heller International. Previously Susan was manager of field facilities for McDonald Corporation. From 1984-86 she was Project Manager for Century Development Corporation in Houston, Texas.

A graduate of Cornell University with a degree in interior design and environmental analysis, Susan joined the AIA in 1984 as an associate member.

She was an active member of the Chapter's Interior Architecture Committee, assisting with their awards program and chairing the Product Display Awards in 1987. Susan was also chair of the Real Estate Committee in 1988, revitalizing that committee after a period of inactivity. In addition Susan was a frequent speaker at Chicago Public Schools in the Careers for Youth program, and helped to organize Chicago events last year in connection with the Chicago meeting of the national AIA Corporate Architects committee.

Her great enthusiasm and boundless energy were a special gift to Chicago AIA programs.

Jane Lucas
Executive Director

Designs for your Future

From The AIA Trust



Hold on to your financial security - now and in the future. Take advantage of a valuable AIA membership benefit. *THE AIA TRUST MAJOR MEDICAL PLAN FOR FIRMS* As the only plan for firms sponsored nationally by The American Institute of Architects, it is designed specifically for architectural firms - including sole practitioners.

- Comprehensive coverage including a number of options so you can fit your program to your situation.
- Employee Benefits including life insurance to help you attract and keep talented people.
- Prompt claims processing by a professional staff.
- Affordable rates, in fact, comparisons show that The AIA Trust Plan premiums are competitive with other plans available to members and lower than most.
- A toll free number to call when you have questions so it's easy to administer.

For more information about The AIA Trust Major Medical Plan, mail the coupon to The AIA Trust Plan Administrator, P.O. Box 93206, Des Moines, IA 50393.

Or call the plan administrator toll free
1-800-343-2972

Please, send information about The AIA Trust Major Medical Plan for Firms. I understand there is no obligation.

Name: _____

Address: _____

City: _____

State: _____ ZIP: _____

Mail to: The AIA Trust
Plan Administrator
P.O. Box 93206
Des Moines, IA 50393

CVA3



AIA Trust

The American Institute of Architects
Benefit Insurance Trust

Of Money and Gold Medals

The National AIA Board of Directors' calendar is organized similar to a student's calendar: the Board meets at the time of the national convention in May, just as the school year comes to an end, usually in May, and when students return to school in September, the AIA Board too reconvenes.

The meeting in Phoenix, September 29 through October 1, will be our third meeting of the year, and a number of interesting issues will be discussed and voted on. The one that has involved the most effort and time - and which will probably spark the most discussion - is the 1992 budget. First Vice President Cecil Butler, FAIA, assembled a group of board members early in the year to form the Planning and Evaluation Committee. Their charge was not only to deal with a budget but to examine existing programs and to make suggestions for their improvement. The committee made their evaluations and began work on the budget.

The total 1991 budget is \$26.6 million. Indications are that next year there will be a substantial short fall between revenue and expenses. In order to balance the budget, a number of steps are being considered. Program expenditure can be cut back, certain monies can be allocated from reserves, and dues can be raised. All three of these are seriously being considered.

The final budget will not be voted on until December. However, at this next board meeting, we will be asked to vote on a \$20 dues increase. There is an interesting wrinkle to this: It is being proposed that half of the increase be allocated to the general budget; the remaining \$10 will be used to offset the cost of convention registration. Instead of paying \$325 for full registration, members would then pay just \$25 - a substantial difference. In the past few years, there has been a real effort to make conventions more affordable and

accessible. The conventions are now all held on weekends so that members can take advantage of reduced plane fares and hotel rates, as well as missing less working time. However, the registration fee has remained high enough to make people think twice about going to a convention. Reducing, actually nearly eliminating the registration fee, reflects a conviction that the convention should be a basic service of the Institute to its members.

Objections to this idea have been raised by some. One concern is that members at one end of the country are subsidizing those at the other end who

I use to say, "A penny saved is a penny earned." Now I say, "Sometimes you have to spend to earn. In particular I refer to paying more AIA dues to earn better benefits." B. Franklin



happen to be near a convention and, therefore, more likely to attend it. Another is a more general concern: that raising dues in difficult economic times creates even more hardship. It should be noted that the cumulative rate of inflation since the last dues increase has been in excess of 18%, and that the proposed increase is 13%. I'll be discussing this both with the Chicago Chapter Board and with the Illinois Council Board before the meeting in Phoenix. Regional Director Les Larsen and I will share their opinions and directives with the National AIA Board members.

Another item of business at the September meeting will be the preliminary voting on Gold Medal candidates. This year there are five candidates: Charles Correa, RIBA Gold Medal winner; Hugh Newell Jacobsen, FAIA; Paul Rudolph, FAIA; Ben Thompson,

FAIA; and Robert Venturi, FAIA and Denise Scott Brown, ARIBA.

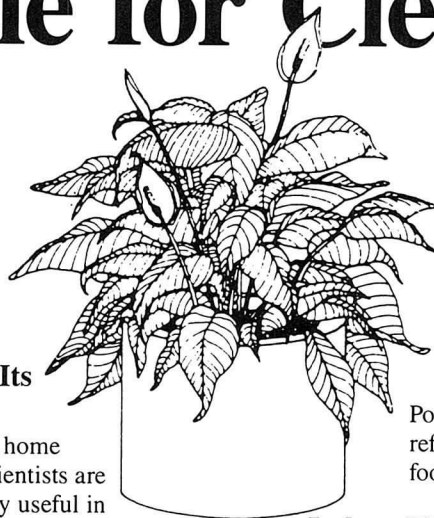
There promises to be some discussion about the dual nomination of Venturi and Brown since the Gold Medal rules specify that the award is to be given to "an individual." There will no doubt be a motion to waive the guidelines and consider a team; this may be opposed by some board members. Five minute presentations are made by board members on behalf of each of the candidates, and votes are taken to narrow the field to three for the final vote at the December Board meeting.

This meeting will begin the second half of my term as regional director. I have found the experience interesting and very rewarding. The constant overriding theme of the board agenda is dealing with change - from the Design/Build Public Policy to a dual Gold Medal nomination. Further changes to be discussed at this meeting involve the structure of the board meetings themselves. Two suggestions that have been made are that there be three meetings a year instead of four, with the result that directors could spend more time traveling and visiting chapters in their regions.

I'll report next month on these and other issues discussed and acted upon at the September Board meeting.

Cynthia Weese, FAIA

Indoor Plants. Winning the Battle for Clean Air



The Indoor Plant Does Its Bit For Cleaner Air.

Those plants in your office or home are not only decorative but scientists are finding them to be surprisingly useful in absorbing potentially harmful gases and cleaning the air inside modern buildings.

Tightly sealed offices with their beautiful furnishings are proving to be hostile environments.

All sorts of dangers lurk inside — formaldehyde and benzene fumes released from building materials, furniture and carpeting; ozone from copying machines; fumes from cleaning solvents; radon and secondhand smoke.

NASA Research Focuses on Living Plants.

We all may be breathing a lot easier thanks to promising National Aeronautics and Space Administration (NASA) research on a most sophisticated pollution-absorbing device: the common office and house plant.

The Interior Plantscape Division of the Associated Landscape Contractors of America has joined with NASA in a two-year program to study the effectiveness of popular office plants in cleaning indoor air.

NASA research on indoor plants has found that living plants are so efficient at absorbing contaminants in

the air that some will be launched into space as part of the biological life support system aboard future orbiting space stations.

Dr. Bill Wolverton, a NASA research scientist, believes that NASA's findings about indoor plants have some down-to-earth applications for cleaning dirty indoor air.

He estimates that 15 to 20 Golden Pothos and Spider Plants can clean and refresh the air in the average 1,800-square-foot home.

Indoor Plants For Better Breathing.

In the initial NASA studies over a dozen varieties of common interior plants were placed in sealed, plexiglass chambers. Formaldehyde, a toxic chemical with the greatest exposure on humans, was introduced. Within 24 hours, the plants — Philodendron, Spider Plant and Golden Pothos — removed 80% of the formaldehyde molecules from the chamber.

NASA Research Identifies The Most Effective Pollution Fighters.

Recent findings reveal that flowering plants such as the Gerbera Daisy and Chrysanthemum are extremely potent in purifying interior air. Other good performers are Draceana massangeana, Spathiphyllum, and Golden Pothos.

Plants Can Clean the Air in Your Environment.

NASA research has consistently shown that living, green and flowering plants can remove several toxic chemicals from the air in building interiors. You can use plants in your office to improve the quality of air to make it a more pleasant place to work — where people feel better, perform better.

Charter Sponsor



**foliage
Design Systems**
Nature indoors... Nationwide.™

(312) 620-4808

Employee Buyout

Insurance as a Vehicle is Beneficial to Both Parties

By Allan Goldstein, CLU, ChFC, RHU

The practice of architecture does not often allow for great accumulation of wealth. And design firms, like most small to mid-size professional service firms, rarely develop capital within the firm. Therefore, when the firm owner retires or dies, employees are frequently overwhelmed by the financial requirements of acquiring the business. To fund a smooth succession, an insurance policy on the owner, purchased by the employees, is one very practical way to address this issue. The employees, who pay the premiums, are named as the beneficiaries. The policy's cash value can fund the buyout at retirement, or the death benefit can finance the purchase in the case of a pre-retirement death.

Employee Buyout at Time of Death

Long-term employees have a vested interest in the continuity of the firm. Once the decision has been made to purchase an insurance contract, the primary issues should be determined and addressed through a properly drafted buy-sell agreement, and/or a non-qualified salary continuation agreement. A properly drafted buyout agreement stipulates that ownership of the firm should pass to the employees. A buy-sell agreement stipulates that at the owner's death the heirs sell their interest in the firm to the employees. This arrangement precludes the owner's family from having to sell the business on the open market and preserves the business for the employees.

Either a term or permanent life insurance policy will work. Term insurance is initially less expensive than permanent; however, investment grade permanent insurance is more prudent, because over time it's more cost effective.

With permanent insurance, a substantial portion of the premium is allocated to the cash value of the policy and is redeemable at a defined cash surrender value prior to the "triggered event."

Employee Buy-out at Time of Retirement

If the employee acquisition is geared toward the owner's retirement date, the same permanent policy would allow the

Long-term employees have a vested interest in the continuity of the firm

employees to purchase the company at that time. With a permanent policy, the employees build cash value reserves to fund what is known as a Living Buyout. This method requires more years to plan and thus more contributions by the employees, resulting in a larger amount of cash to help fund the business buyout.

There are two additional benefits of owning such a policy, which become an issue at retirement. First, the contract at retirement could be transferred to the retiring owner, as part of, or in lieu of, cash for the business buyout. In effect, the employees sell the policy to the owner for the current value of the contract, an amount roughly equal to the cash surrender value. For the owner, the policy could then provide additional coverage that could fulfill any estate plan liquidity requirements. Life insurance is the most commonly accepted and cost effective vehicle used in paying estate taxes. Alternately, the employees, the new owners of the firm, could keep the policy in place after buying-out the original owner, thereby providing a means of recovering premiums at the subsequent death of

the insured (owner). In addition, should there be a remaining liability to the owner's estate, i.e. additional payments due him, the policy provides an excellent funding vehicle to liquidate the remaining debt.

Valuing the Business

Inherent in the planning for business succession is the need for establishing a value for the business. Most service firms tend to underrate themselves in terms of their true value. The planning process involves both personal and emotional issues and can be difficult. Owners who have spent a lifetime building their firm(s) often have a difficult time passing command on to someone else. The owner should discuss valuing his firm with his accountant and/or attorney and then take steps to have the proper agreements drafted, signed, and funded.

Conclusion

For employees interested in acquiring ownership of a firm at the owner's retirement or death, a permanent life insurance policy is a relatively inexpensive undertaking when compared to the alternative methods of financing. Among those are savings or bank debt. Bank debt is the most expensive method, and for architects, almost impossible to obtain without jeopardizing equity in their homes. However, a policy whose purpose is to help fund a buyout at retirement is not a magical solution. For example, at age 62, it isn't feasible for employees to initiate a contract for the owner's retirement at age 65; there is not time to pay enough premiums to fund a buyout. But, with good planning and foresight, acquisition by means of investment grade life insurance is the least expensive alternative to funding business transition.

Allan Goldstein is the president of Goldstein Financial Corporation, a Chicago-based consulting firm specializing in employee and executive benefits.

People

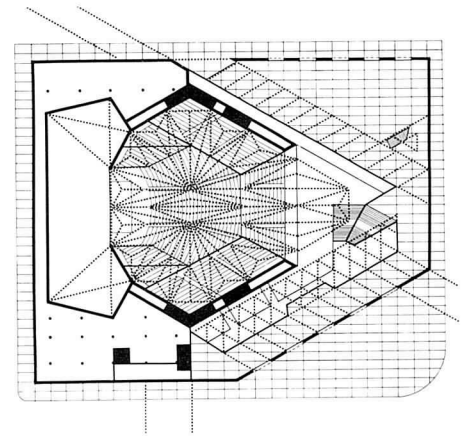
▼
Diane Legge Kemp, FAIA, was a member of the architectural design jury in *Progressive Architecture's* 39th annual P/A Awards program. Two other categories make up the program: urban design and architectural research. The winners will be announced in January 1991 at a ceremony in New York, and winning entries will be published in the January issue.

▼
 Several Chapter members have been named Senior Associate at Perkins & Will. They are: **Jocelyn Frederick, AIA**; **James Lubawy, AIA**; **James Predergast, AIA**; **Louis Raia, AIA**. Chapter members named Associates of the firm are **Fereidoon Afshari, AIA**; **Roger McFarland, AIA**, **Mark Roeser, AIA**.

▼
Thomas J. Eyerman, FAIA, formerly a partner of Skidmore, Owings & Merrill has established his own firm concentrating on service to professional firms as an independent advisor and counselor on management issues. Among services of Delphi Associates Limited are developing or assessing strategies to increase competitiveness, reduce costs, improve productivity and prepare for growth; reviewing management information systems to monitor operations including performance reviews and employee benefits; reviewing procedures to improve working capital and cash management. Eyerman is a past president of the Chicago Chapter. Delphi Associates is at 645 N. Michigan Ave., Suite 800, telephone 312/280-5785, fax 312/664-4659.

▼
Booth Hansen Associates is pleased to recognize the following leadership roles in the firm: **Laurence Booth, FAIA**, Design Principal; **Paul Hansen, AIA**, President; **William Ketcham, AIA**, Senior Vice President; **James Fraerman, AIA**, Senior Vice President; **Tom Wolf**, Senior Vice President, Secretary; **W. Randall Hafer, AIA**, Vice President; **Paul Duffy, AIA**,

1991 Burnham Prize Winner for a new performing arts center for the Lyric Opera and Chicago Symphony: Edward Webb.

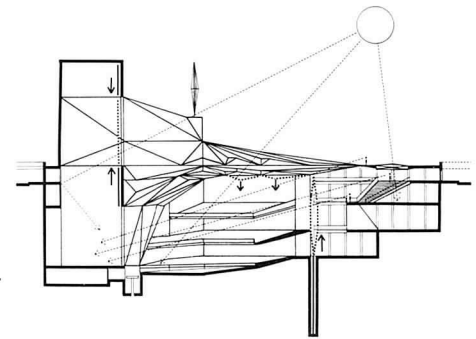


Vice President; **Laura Weyrauch, AIA**, Vice President.

▼
 The **Newhouse Architecture Foundation** Board of Directors has elected new members to serve a three-year term on the board. Those elected at the annual meeting in June were **Joseph Gonzalez, AIA, SOM**; **David Hoffman, Morse Diesel**; **Robert Barnes, AIA**, Perkins & Will; **Adrienne Bailey** and **Ted Kimbrough**, Chicago Public Schools; **Daniel Maquire**, Turner Construction; **Mary Ann Cronin**, LaSalle Partners; **Chandra Jha**, PSM International Corp.; **George Munoz**, Attorney; and **Patti McHugh**, **James McHugh Construction**.

▼
Robert J. Piper, FAIA, retired this past June as Director of Community Development of the City of Highland Park. Piper is a past president of the Illinois Council AIA (1986) and was secretary of the Chicago Chapter in 1981. He is well known for his work with the Institute as a member of the Octagon staff, as editor of the *AIA Handbook of Professional Practice*, and as a "charter" staff member of the then new Urban Design program. Piper is the author of *Careers in Architecture*, now in its fifth edition. He was recently honored by the City of Highland Park for his contributions to the planning of the city, and in June, the State of Illinois 87th General Assembly House of Representatives drew a resolution congratulating him for his years of service to the community.

▼
Edward Webb has been selected as the winner of the 1991 **Burnham Prize Competition**, receiving a three-month fellowship to attend the American Academy in Rome. The eighth annual competition, sponsored by the Chicago Architectural Club, called for a design of a new center for the performing arts incorporating both the Lyric Opera and the Chicago Symphony Orchestra. The jury for this year's competition consisted of **Michael Rotondi** of Morphosis, **Jordan Moser**, and 1985 Burnham prize



winner **Thomas Rajkovich**. The jury also selected **Dana Terp, AIA**, as First Alternate and **Brett Theyenote** as Honorable Mention.

▼
 On behalf of the Institute, **John Tomassi, AIA**, presented a statement to the U.S. House of Representatives Subcommittee on VA, HUD, and Independent Agencies of the Committee on Appropriations concerning matters pertaining to the appropriation for the Department of Housing and Urban Development. The statement, prepared by AIA Government Affairs, addressed such issues as housing construction and rehabilitation in both traditional programs such as public housing and the Section 202 program for the elderly and disabled, as well as new programs funded under the National Affordable Housing Act.

▼
Doreen Weiss, coordinator of the Chapter's **Careers for Youth** program extends a thank you to all those who acted as **role models** during the 1990-91 school year, which gave students valuable insight into the world of architecture. Those participating were: **Julie Blazek**; **Carrie Carne**; **Brett Cochrane**, Associate Member; **Julie DePrey**; **Dan Duffy**; **Charlie Duster, AIA**; **Leon Floerchinger, AIA**; **Mark Fritsch, AIA**; **Ed Gregory**, Professional Affiliate; **Frank Heitzman, AIA**; **Robert**

Hendrickson; Renato Imana, Associate; Yves Jeanty, AIA; Mark Jolicoeur, AIA; Ken Kaiser, AIA; Keith Kreinik; Vic Krosnopolsky; Gerty Leong; Sally Levine, AIA; Mike Marsch; Sam Marts; Bill McBride, AIA; Jim Prendergast, AIA; David Raino-Ogen; Adriano Rigoni, Associate Member; Jaime Rodriguez; Neil Sheehan, AIA; Cynthia Slaughter; Rufus Taylor; Billy Tindell, AIA; Rob Vagnieres, Jr., AIA; Ken Wardingley, AIA; Mark Weber; Steven Weiss, AIA; Robin Whitehurst, Associate Member; Tom Wichlinski; William Worn, AIA; Julie Evans.

Project Spotlight

This summer the Ernest R. Graham Study Center for Architectural Drawings at The Art Institute was opened. Designed by Stanley Tigerman, FAIA, of Tigerman McCurry Architects in association with Charles Smith, AIA, of Barnett and Smith, the Center is home to the architecture department's curatorial staff and an extensive collection of drawings and architectural fragments. Work space is also available for scholars wishing to consult the department's collections. The Center, supported by a grant from the Graham Foundation for Advanced Studies in the Fine Arts, is named after



Ernest R. Graham (1868-1936), who bequeathed funds to establish the foundation. Graham was a partner in the firm Graham, Anderson, Probst and White. Recent acquisitions housed in the Center include the archives of Bruce Goff, Brenner Danforth Rockwell, and sketches by Mies van der Rohe. Other significant drawings in the collection include works by Louis Sullivan, Daniel Burnham, Frank Lloyd Wright, Walter Burley Griffin, and David Adler, among others. A number of Tigerman's drawings also are now a part of the architecture collection. The Graham Study Center, located on the lower level of ▶

Merchandise Mart,
Panel Concepts
Showroom;
Painting on Cabinet
Doors

Please call
for a brochure.

KOZAN STUDIOS
Trompe L'oeil/Faux Finishes
(312) 787-4014

**BOTTI STUDIO
OF ARCHITECTURAL ARTS, INC.**
919 GROVE ST., EVANSTON, IL 60201
Phone: 708/869-5933 Fax: 708/869-5996

STAINED AND FACETED GLASS WINDOWS
MOSAIC • PROTECTIVE GLAZING • SCULPTURE
BEVELED GLASS • METAL • MARBLE
COMPLETE INSTALLATION
SANCTUARY FURNISHINGS
COMPLETE INTERIOR RENOVATION
SANDBLASTING • STAINED GLASS RESTORATION
PAINTING AND DECORATING • MURALS • WOOD
STAINED GLASS CONSULTANTS
METAL AND WOOD FRAME RESTORATION

Field Representatives:
New York N.Y., Cleveland Ohio, Atlanta Georgia,
Sarasota Florida, Phoenix Arizona,
San Diego, Los Angeles, San Francisco California,
Seattle Washington
Call or Write for a Free Brochure

AVA INSURANCE AGENCY, INC.
INSURANCE SPECIALISTS FOR DESIGN PROFESSIONALS

- o Professional Liability
- o Business
- o Special Programs
- o Benefits

You're a Professional...You Deserve the Best

One Tower Lane, Suite 1500, Oakbrook Terrace, Illinois 60181
(708) 571-4500 Fax (708) 571-4518

D **DETTERBECK & ASSOCIATES, LTD.**

Certified Public Accountants

**LET US BE THE ARCHITECTS OF YOUR
FINANCIAL FUTURE**

SPECIALIZING IN THE ARCHITECTURAL INDUSTRY

Chicago Office
222 N. LaSalle, Suite 1900
Chicago, Illinois 60601
Telephone (312) 419-9421

Schaumburg Office
1515 Woodfield Road, Suite 960
Schaumburg, Illinois 60173
Telephone (708) 619-6262

Why spend \$50 an hour on your CAD work when we will do it for \$15?

Outsourcing some of your CAD work makes a lot of sense. Especially when it costs less than 50% of your internal costs.

- As-builts
- Base drawings for Renovation projects
- Field Measurements
- Absolute accuracy
- Redraw to dimensions
- Databases

Numerous architectural firms, large and small, use Indus as an extension of their CAD departments. Please give us a call.

Indus Systems, Inc

3 Militia Dr
Lexington, MA 02173



(617) 861-9833

SURE.

That's What You Are
With AIA Documents.
Order Today.

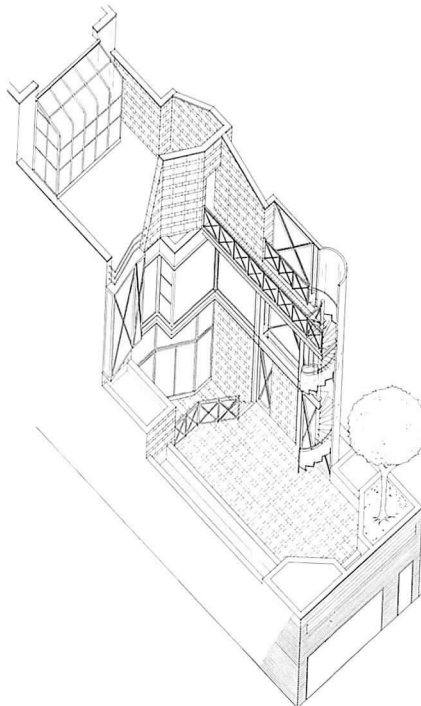
AIA Chicago
53 W. Jackson Blvd., Suite 350
Chicago, IL 60604
312/663-4111

Full Service
AIA Documents Distributor

The Art Institute's main building, measures 3,340 gross square feet. "This creatively designed facility demonstrates the Art Institute's continuing commitment to assist both scholars and the interested public by increasing access to the museum's internationally significant collection of architectural drawings," said John Zukowsky, curator of architecture. "[The Center] provides much needed space for the public to consult rare documents." The Graham Study Center is open by appointment only to architects, scholars, students, Art Institute Members, and the public by calling 312/443-3949.

The brick and stone **Benefit Trust Life Insurance Company** in Lake Forest, designed by **Loebl Schlossman and Hackl**, was a second place winner in the Low-Rise Commercial category of the National Association of Brick Distributors 1991 Beauty in Brick Design Awards. The four-story, 220,000 square-foot building, located on 20 acres of rolling land in Conway Park, serves as corporate headquarters for the insurance company. Earlier this year, the firm, also received a Bronze Medal Award from the Illinois Indiana Masonry Council for Excellence in Masonry Design of the insurance headquarters.

Among recent projects of **Richard Gibbons & Associates** is a renovation and addition in Chicago's Gold Coast area. The project will transform the



rear of a single family residence into a modernist assembly of glass, steel, and stone; the addition will front a new back yard located on the restructured garage. A monumental privacy wall and exit stair will restrict the view from the neighboring apartment building to the private family areas of the residence.

Competitions

The Chicago Athenaeum has announced a design competition for "The Most Beautiful House in the World," a competition for a two-family dwelling, co-sponsored by The Chicago Athenaeum and the Studio Arcanto in Italy, Arcantorie (a not-for-profit Italian foundation), together with the City of Reggio Emilia, Italy; and Banca Del Monte di Parma. Prizes are over \$84,000 with \$45,000 to the single winner who will build the winning entry in Italy; \$4,000 will go to each of nine semi-finalists. The jury includes Alessandro Mendini, Leon Krier, Paolo Portoghesi, Richard Meier, and Toyo Ito. The competition is open to registered architects and engineers; entrants may be individual or in groups (in this case a group leader must be named). Other professionals and students are allowed to participate in a group if the group leader is a registered architect or engineer. Applications for entry must be submitted by letter with details of the applicant(s) and the address. The deadline for the application is Dec. 15; deadline for the scheme is Jan. 30, 1991. For more information, please contact The Chicago Athenaeum, 1139 W. Fulton Market, Chicago, IL 60607; 312/829-9650; FAX 312/829-9606.

Architectural Record announces the 37th annual Record Houses awards program. The program is open to any registered architect; work previously published in other national design magazines is disqualified. There are no entry forms or fees, although submissions must include plan(s), photographs, and a brief project description - bound firmly in an 8 1/2 x 11-in. folder - and be post-marked no later than Oct. 31. Winning entries will be featured in the 1992 Record Houses. Other submissions will either be returned or scheduled for a future issue. If you would like your entry returned, please include a self-addressed envelope with appropriate postage. Submissions should be mailed to: Paul M. Sachner, *Architectural Record*, 1221 Avenue of the Americas, New York, NY 10020. ▶

**WINNING
AWARDS**

"The Gem on Michigan Avenue"...

Shines Brighter Thanks to Jones & Brown

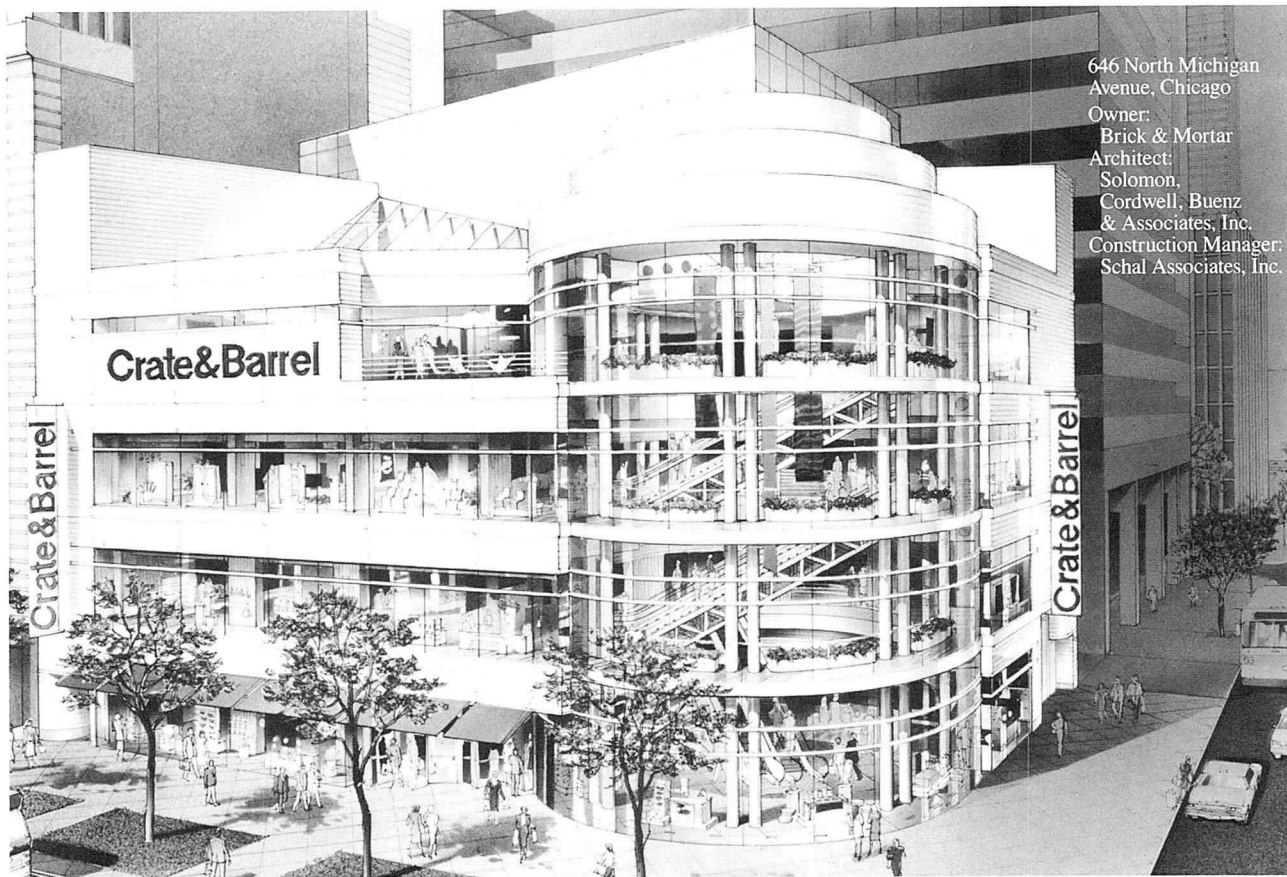
For Crate and Barrel, Jones & Brown suggested, provided and installed the exterior cladding: 3mm Pohl aluminum panels painted in high gloss white powder coating. The panel system incorporates the "rain screen" principle to eliminate exposed caulking. Michigan Avenue's jewel will gleam brightly for many years to come.



Jones & Brown Company, Inc.

568 West Winthrop Ave., Addison, IL 60101 • (708) 543-0300
Houston and Beaumont, Texas

Designing, Building and Rebuilding for Tomorrow



646 North Michigan
Avenue, Chicago
Owner:
Brick & Mortar
Architect:
Solomon,
Cordwell, Buenz
& Associates, Inc.
Construction Manager:
Schal Associates, Inc.

HOW TO GET BUILDING PERMITS IN CHICAGO

You'll learn step-by-step how to go through the process plus plenty of tips to help things go smoothly. Tell-all book written by an expeditor. Finally, some useful information! Send \$27.95 check or m.o. (tax/shipping included): Forward Publishing, P. O. Box 138411, Chicago, IL 60613-8411

3,000 to 24,000 square feet
of loft space

CHICAGO - West Loop

\$3 to \$4 per square foot.

All new plumbing, electrical, security system, sprinklers, windows, heating and ventilation (air conditioning available). New passenger and freight elevators.

Prime location - Randolph and Halsted - next to Kennedy expressway, 8 blocks from City Hall. Excellent opportunity for small businesses and/or combined with residential.

For more information and brochure, call Mary, 708/291-1333.

▼
Competition for the **Steedman Traveling Fellowship**, sponsored by the Steedman Governing Committee at Washington University, St. Louis, will take place in December. The fellowship provides a \$20,000 award, which enables an architect to travel and study abroad for nine months. The competition is open to all architects, regardless of age, for a period up to eight years after the receipt of their professional degrees. Entrants must have at least one experience in the office of a practicing architect. The Steedman is named for James Harrison Steedman, an 1889 graduate of Washington University's School of Architecture, who died after serving in the U.S. Naval Reserves during WWI. For registration forms (due Dec. 6 with \$50 application fee) and information, write to the Steedman Governing Committee, Washington University School of Architecture, Campus Box 1079, One Brookings Dr., St. Louis, MO 63130. The winner will be announced in early February.

Lectures/Seminars and more

▼
The School of Art and Design and the Chancellor's Office of the University of Illinois at Chicago, the Museum of Contemporary Art, and Governor Jim Edgar are sponsoring a five-week lecture series, "**City Life and the Future Museum.**" On consecutive Wednesday evenings beginning Oct. 2 in the State of Illinois Center Auditorium, 100 W. Randolph, leading artists, scholars, social critics, urban planners, and educators will examine the role art museums play in contemporary society and how that role will change in the next century. The series will be introduced Oct. 2 by UIC Chancellor James Stukel and Kevin Consey, director of the Museum of Contemporary Art. All lectures begin at 6 p.m. and reservations can be made through the MCA Education Dept., 312/280-2697. Tickets are \$50 for the series (general public) and \$40 for MCA members, students, and senior citizens. Individual lectures are \$12/\$10. Please see the FOCUS Calendar for dates, topics, and speakers of individual sessions.

▼
Attend the **AIA International Committee Conference**, "International Trends in World Markets," Nov. 8-9 in San Francisco, and for you, the world picture will be developed in a clear, concise way. Architects will discuss trends in project types and joint ventures in geographical regions around the world;

a developer will discuss new approaches to assembling successful projects and new market opportunities; corporate executives and consultants will talk about corporate trends - which industries are expanding and where; committee members will participate in five newly formed subcommittees focusing on markets and marketing strategies, practice, international government affairs and trade, and international associations, and education; committee members will participate in hands-on working sessions - vital information for those already in international practice and for those who wish to enter the international marketplace. For information and registration materials, contact Dena Solins at 202/626-7415.

▼
Project Management Associates, Inc. will present "**Redefining the Architect's Role During Construction**" Oct. 16-18 in Chicago in conjunction with the University of Michigan College of Architecture and Urban Planning. The seminar will focus on the benefits of expanding the architect's involvement during the construction phase of a project as a cost-effective alternative to hiring a construction manager, and will offer an update on techniques useful to reducing a project's exposure to contract disputes, delays, and claims. For more information, please call the University's Department of Conferences and Seminars, 313/764-5305.

▼
The **29th Biennial Congress of Lambda Alpha International** will meet Oct. 3-5 at The Art Institute. The Congress theme focuses on the opportunities and challenges as a result of the incredible transformations of political and economic systems worldwide. A stellar group of speakers from the world of finance, real estate, architecture, and management will present their view of the impacts and challenges ahead and how we can best take advantage of the opportunities in this new global environment. For more information and how to register, call Lambda Alpha International, 312/616-0800

Exhibitions

▼
A showing of all the 1991 entries to the **1991 Burnham Prize Competition** continues through October 19 at the Chicago Architectural Club Gallery space at 125 N. Halsted, third floor. Additional viewing is available with an appointment by contacting Alan Armbrust, AIA, at 708/940-9600.

▼ Associate Member **Patrick O'Malley** will be exhibiting drawings in a group show at the Chicago School of Professional Psychology, Dearborn Station, second floor, 806 S. Plymouth Court. Exhibit hours are Mon.-Fri., 9-6, through Oct. 25.

▼ "**Rumors About the American House,**" at the Gwenda Jay Gallery, 301 W. Superior, will showcase residential designs of **Douglas Garofalo, AIA; Ralph Johnson, AIA; Margaret McCurry, FAIA; Frederick Phillips, AIA; Christopher Rudolph, AIA; John Syvertsen, AIA; Joseph Valerio, AIA; Daniel Wheeler, AIA.** Opening Oct. 11 (artists' reception 5:30-8 p.m.) and showing through Nov. 9, the drawings and models are for homes designed for eight contiguous lots in the Falling Water development in Burr Ridge being developed by Pacific-Sakata Development. Gallery hours are Tues.-Sat. 10:30 a.m.-5 p.m. On Oct. 24, from 6:30-8 p.m. the architects will speak on their projects. For details contact the gallery at 312/664-3406.

▼ In Highland Park at the Elaine

Sternberg Gallery, is a showing of Ramona Sakiestewa's award-winning natural fiber weavings. Once commissioned by the Frank Lloyd Wright Foundation to do 12 weavings, Sakiestewa will be at the gallery, 587 Elm Place, on Oct. 4, 6:30 p.m., to discuss her art and the three Frank Lloyd Wright pieces on display. The Gallery extends its invitation to stop in for cocktails that evening and to meet this native American artist from New Mexico. Her work will be exhibited through Nov. 15, Mon.-Wed., Fri. and Sat., 10 a.m.-5 p.m., Thurs., 10 a.m.-8 p.m.

Various Matters

▼ Several architectural librarians and architects involved in office library management have been meeting for brown bag lunches and have formed the **Chicago Chapter Association of Architectural Librarians.** We welcome CCAIA members to join us. Call Ann Dutt Milano at SOM, 641-5959 for more information.

▼ The Society of Architectural Administrators will hold an **auction of architectural drawings** Oct. 29, 5:30

p.m., at Perkins & Will, 123 N. Wacker Dr., 4th floor. Here's your chance to purchase original artwork by some of the world's most renowned architects and architectural photographers at the most reasonable prices. Proceeds from the auction will go toward a scholarship for a third-year architectural student in the Chicago area. Last year, a \$1,500 scholarship was awarded to IIT student Kenneth Johnson. Cocktails and hors d'oeuvres will be served beginning at 5:30. Bidding will begin at 5:45 and bid sheets will be collected from the drawing at 7 p.m. Mark your calendar to join in the festivities and meet a few of these talented and distinguished designers.

▼ In a letter of Aug. 12 to the Chapter, a **Canadian architectural firm has expressed interest in forming alliances with American architectural firms** in order to take advantage of the Canada-U.S. Free Trade Agreement. The firm says they are interested in forming alliances based on geographical coverage and specialization by building sector. Temprano Associates Inc., Architects & Planners has prepared a "Strategic Alliance" brochure. To obtain a bro- ►



HUEY
PROVIDING REPROGRAPHIC SERVICES TO CHICAGO
ARCHITECTS AND ENGINEERS SINCE 1915

MAIN PLANT (312) 782-2226
19 S. WABASH

RIVER NORTH (312) 644-2264
435 N. LaSALLE

**River West location
opening soon!**

CAD Plotter down? Facing deadlines? Call Huey.

**Huey Reprographics/CADD Plotting
Service is your emergency source.**

Complete Reprographic Services

- 24 hour 7 day week modem service up to 19,200 baud
- Our plotters support most IBM and Macintosh PC-based CAD Systems and many mainframe systems
- No monthly charge
- 400 DPI for excellent output
- Plotting on bond, vellum or mylar to meet your needs
- Full color or B&W of your CAD files
- 42" width, any length
- Aperture card printing available to 36 x 48
- Same day processing
- Technical support and consultation
- Full line reprographics house for your post plotting needs
- Canon laser (r) color copies
- Dry mounting for presentations
- Photomechanical: washoff, fixed line, silver slicks
- Pin-register overlay drafting repro specialists
- PMT stats
- Large format 5080 (r), 2080 (r) xerox copies
- Whiteprints, sepias, bid set printing
- High speed duplicating: specifications, booklet, reports
- Offset printing
- Drafting supplies
- Huey deluxe drafting tables, Diazo blueprint paper

chure or further information, contact Eliseo Temprano, 201 Rideau St., 2nd floor, Ottawa, Ontario Canada K1N, phone 613/230-7156, FAX 613/230-2703.


FOR EVERYONE WHO LOVES OLD BUILDINGS

LANDMARK Yellow Pages

Where to Find All the Names, Addresses, Facts and Figures You Need

Advertise in Landmark Yellow Pages — the National Trust guide to building restoration products and services.

NATIONAL TRUST FOR HISTORIC PRESERVATION



While the deadline for display advertisements closed Sept. 30, the publisher of *Landmark Yellow Pages* has indicated an interest in further inquiries

about display ads. The deadline for General Listings in this sourcebook that reaches homeowners and professional building restorers is Oct. 31. To inquire further, contact Pamela Dwight, Preservation Press, 202/673-4057, FAX 202/673-4172.

Architectural drawings for the **Chicago Real Estate Board Building**, 105 W. Madison, completed in 1929, have been donated by the Hearn Company, the building's current owner, to the Ryerson and Burnham Libraries. **Bauhs and Dring**, the firm which directed the building's renovation, "respected the pre-international modern style of the Burnham Brothers (Daniel H. Jr. and Hubert Burnham, sons of Daniel Burnham) while avoiding a literal copy," noted architect **Bill Bauhs**. The building plans add to the Burnham archival collections, which contain construction photographs of the building as well as correspondence, photographs, scrapbooks, and drawings documenting the work of the father and sons.

The Association for Project Managers in the Design Professions (APM) has been formed, focusing on the organizational, compensation, training, and information needs of project managers. A project manager certifica-

tion program is also planned. Benefits and services include discounts on book purchases, computer hardware and software discounts, an annual salary and operations survey, employment services, seminar discounts, an information clearinghouse, and many others. First year charter memberships are \$495 for firms (includes up to eight project managers) and \$95 for individuals. For information and an application, contact APM at: 1227 W. Wrightwood Ave., Chicago, IL 60614, 312/472-1777, FAX 312/525-0444.

SEAOI, located at 203 N. Wabash, Chicago, IL 60601, has changed suites. #1000 will provide the association with the larger space it has come to need with the expansion of its membership services. The telephone number remains 312/372-4198. Executive secretary of SEAOI is Barbara Pries.

An annual sourcebook featuring the top design professionals in North America, *A/DC 2 (Architectural Design Collaborators)* provides the architect, real estate developer, marketing executive or project team builder the most comprehensive resource of creative talent. Over 750 full-color images display the work of more than 290 photographers, model makers, lighting designers, environmental graphic designers, illustrators/renderers, building materials artists, and other specialists. Indexed by discipline and region, the 320-page, case bound publication is \$49.95. Contact: Perlman/Stearns, Inc., 20 Trowbridge St., Cambridge, MA 02138; 1/800-876-0232.

The Portland Cement Association has published a revised and expanded fifth edition of its *Concrete Masonry Handbook for Architects, Engineers, Builders*. The 264-page handbook reflects current standards and specifications of the American Concrete Institute, American Society of Civil Engineers, and American Society for Testing and Materials. Graphs, tables, and illustrations afford quick design, engineering, and construction references. The publication is available for \$31.50, shipping and handling included. Contact PCA, Dept. CMH, 5420 Old Orchard Rd., Skokie, IL 60077; 708/966-9559

Author Nancy Austin (*A Passion for Excellence: The Leadership Difference*) says, "It doesn't matter what product or service you provide, the question you have to ask is 'Does it Work?'"



one company with everything in plants and flowers

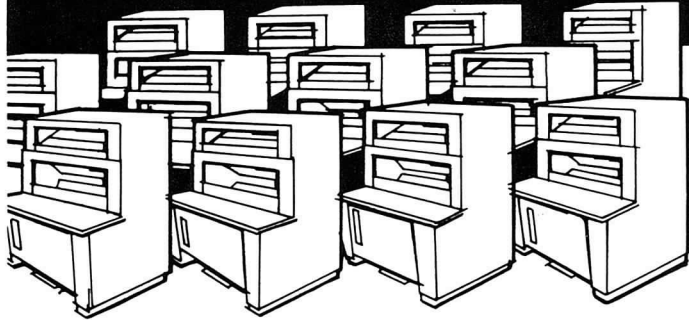
- complete selection of plants for sale or rental
- professional convention services
- unique everyday flowers and gifts
- creative party and wedding consultation
- custom silks

Floral Arrangements Worldwide

floral designs inc.
and greenhouses
3021 no southport
chicago, illinois 60657
oak brook 708-620-4808

**(312)
528-9800**

**When you need 1
or 1,000,000 blue
prints, or any other
quantity...**



**MOSSNER'S 15 State-of-the-Art
Blue Print-White Print Machines
at One Location Produce Them
Fast, Fast, Fast**

**NO JOB TOO LARGE
NO JOB TOO SMALL**

**BLUE LINE, BLACK LINE,
BLUE PRINTS AND
SEPIA REPRODUCIBLES**

Speed, quality and dependability... these characterize Mossner's "blue print" service since 1922.

For more than 60 years, Mossner has provided the latest and fastest state-of-the-art, high-production equipment.

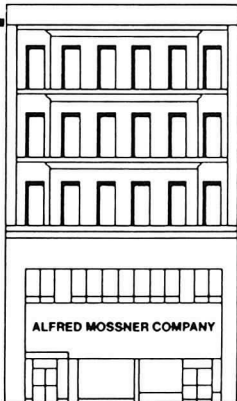
More than 50 messengers plus radio-dispatched pick-up and delivery vehicles assure the fastest possible service, including dependable print distribution to consultants, contractors and clients.

And that goes for *any* quantity you may require.

Mossner 372-8600

THE REPRODUCTION PEOPLE • LARGEST IN THE MIDWEST

Mossner Building • 137 North Wabash at Randolph (across from Marshall Field's), Chicago, IL 60602



Fast one-source service for all of your reproduction requirements

PHOTOMECHANICAL SERVICES

- STAR-REPRO[®] Drafting Systems—for pin-bar, overlay and team drafting
- Precision camera work up to 48 in. by 72 in.; enlargements and reduction to 10 times.
- Autopositives
- Scissor drafting
- Photo drafting
- PencilTone[®] reproductions
- Xerox 600 enlargements from 35mm microfilm
- Xerox 2080 and 1860 translucent vellum or Mylar intermediates, and paper prints - reduced or enlarged

OFFSET PRINTING

- Specification sheets and booklets
- MAGI-COPY[®] fast printing service — ideal for architectural and engineering specifications

**105mm and 35mm MICROFILM SERVICE
DRAFTING SUPPLIES AND FURNITURE**

**BLUE PRINTS,
WHITE PRINTS,
SEPIA INTERMEDIATES
ON PAPER OR MYLAR**

WE DO IT ALL UNDER ONE ROOF

Calendar of Events

Wednesday, October 2

LECTURE. *Museum as Educator.* Arthur Danto, prof. of philosophy, Columbia Univ. & critic. 6 p.m. (Reception, 5:30). State of Ill. Ctr. Auditorium, 100 W. Randolph. \$50 series/\$12 ea. 312/280-2697.

Thursday, October 3

- **TECHNICAL COMMITTEE PROGRAM/MEETING.** Noon. Chicago Bar Assn., 321 S. Plymouth Ct. Lunch tickets may be purchased for \$5.50.

BIENNIAL CONGRESS. Lambda Alpha International through Oct. 5 at The Art Institute. Impacts/challenges/opportunities in new global environment. 312/616-0800.

Monday, October 7

- **1993 CONVENTION COMMITTEE MEETING.** 5:30 p.m. Board Room.

Tuesday, October 8

- **EXECUTIVE COMMITTEE MEETING.** 8 a.m. Chapter Board Room.

SEAOI LECTURE. *The Chunnel.* Colin Kirkland, technical director, Eurotunnel. Dinner, 6 p.m., lecture, 7 p.m. Union League Club, 65 W. Jackson. \$30. Registration: 312/372-4198.

Wednesday, October 9

- **HOUSING COMMITTEE MEETING.** 6:30 p.m. Chapter Board Room

EXHIBITION LAST DAY. Drawings & Watercolors of Marya Lilien, apprentice to FLW at Taliesin. Dept. of Interior Architecture, School of the Art Institute, 37 S. Wabash, 12th fl. 312/899-5194.

Thursday, October 10

SMPS LUNCHEON/PANEL. *Tough Tactics for Tough Times.* 1:30 a.m. Swiss Grand Hotel, Alpine Ballroom, 232 E. Wacker. \$30 members/\$45 non-mem. 312/327-1611.

Friday, October 11

EXHIBITION OPENING. *Rumors About the American House.* 5:30-8 p.m. Gwenda Jay Gallery, 301 W. Superior, 2nd fl. 312/664-3406.

Saturday, October 12

- **SEMINAR.** *Strategic Project Management.* AIA sponsored. 8:30 a.m.-5 p.m. Chicago Athletic Assn., 12 S. Michigan. Info/registration: pg. 5.

LECTURE. *Museum and the City.* Diana Agrest. 6 p.m. (Reception, 5:30). State of Ill. Ctr. Auditorium, 100 W. Randolph. \$50 series/\$12 ea. 312/280-2697.

Tuesday, October 15

SAA PROGRAM. *Office Recycling.* Speaker: Jan Power, Uptown Recycling. Information: Pam Slaby, 312/977-1100, X1445. 5:30-7:30 p.m. Perkins & Will, 123 N. Wacker, 4th fl.

Wednesday, October 16

LECTURE. *Semiotics of Museums.* Mieke Bal, prof., theory of literature, Univ. of Amsterdam. 6 p.m. (Reception, 5:30). State of Ill. Ctr. Auditorium, 100 W. Randolph. \$50 series/\$12 ea. 312/280-2697.

Saturday, October 19

- **AIA CHICAGO ANNUAL CAREER DAY IN ARCHITECTURE.** 9:30 a.m.- 2 p.m. Art Institute's Stock Exchange Trading Room.

Monday, October 21

DEADLINE. 1991 American Wood Council Design Awards Program. Information/entry forms: 202/463-2761.

Tuesday, October 22

- **AIA CHICAGO BOARD MEETING.** Noon. Chapter Board Room.

Wednesday, October 23

- **CSI/AIA SEMINAR.** *Insurance:*

Owner's/Contractor's Insurance. 8-9:30 a.m. Chicago Bar Assn., 321 S. Plymouth Ct. Sign up pg. 5.

- **TOUR.** *Landmark Interiors.* Sponsor: Interior Architecture Committee. 5:30 p.m. Begins at Continental Bank, 231 S. LaSalle. Sign up pg.5.

LECTURE. *Museum and Its Communities.* Robert Garfias, prof., anthropology, Univ. of Calif.-Irvine, & Ronne Hartfield, ex. dir., museum education, Art Institute. 6 p.m. (Reception, 5:30). State of Ill. Ctr. Auditorium, 100 W. Randolph. \$50 series/\$12 ea. 312/280-2697.

Thursday, October 24

- **COMPUTER COMMITTEE GOALS MEETING.** 5:45 p.m. Board Room.

DESIGN DISCUSSION. Architects exhibiting in "Rumors About the American House." Gwenda Jay Gallery, 301 W. Superior, 2nd fl. 6:30-8 p.m. 312/664-3406.

Tuesday, October 29

ARCHITECTURAL DRAWINGS AUCTION. Sponsored by SAA. 5:30 p.m. Perkins & Will, 123 N. Wacker, 4th fl. Donation \$3.

SEMINAR. *Evolving Aspects of Masonry Design & Construction.* 7:30-Noon. Embassy Suites Hotel, Chicago. \$95 advance/\$105 at door. Portland Cement Assn.: 708/966-6200.

Wednesday, October 30

LECTURE. *Museum and the Art of Seeing.* Mihaly Csikszentmihalyi, prof. of psychology & education, Univ. of Chicago/consultant, Getty Foundation on Museums. 6 p.m. (Reception, 5:30). State of Ill. Ctr. Auditorium, 100 W. Randolph. \$50 series/\$12 ea. 312/280-2697.

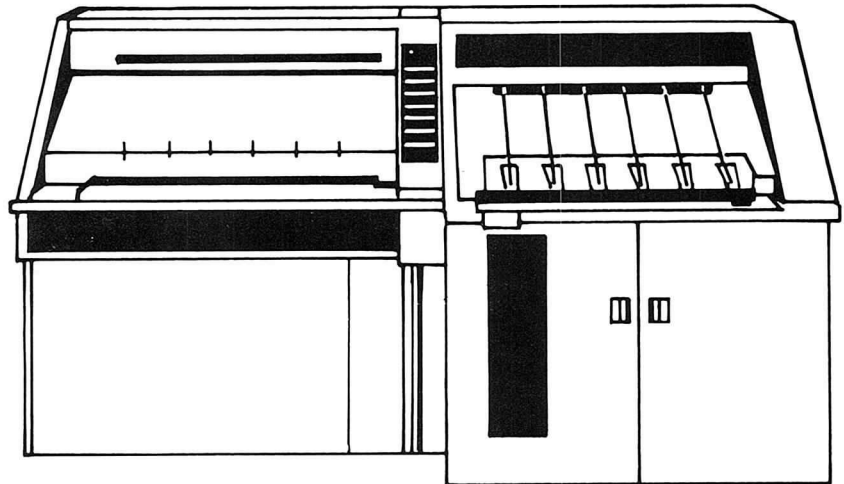
Thursday, October 31

DEADLINE. Record House, 1992. Paul Sachner, *Architectural Record*, 1221 Avenue of the Americas, NY, NY 10020.

MOSSNER now has more repro-drafting capability than anyone in the Chicago area.

FIRST IN CHICAGO

Now...50% more capacity to enlarge and reduce drawings



INTRODUCING THE **SHACOH 36** COPIER

- Enlargements to 210%
- Reductions to 45.8%
- Increments of 1/10 of 1%
- Widths to 36"
- Variable Lengths
- Exceptional Reproduction

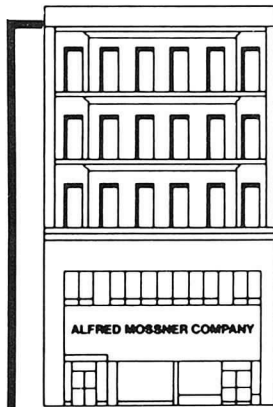
With the new SHACOH 36 added to our two XEROX 2080 copiers, Mossner has the most modern computer controlled repro-drafting capability in the Chicago area. The SHACOH 36 is the most versatile and the most accurate copier on the market today. And it's first in Chicago at Mossner, the largest reproduction house in the Midwest.

The new SHACOH 36 allows us to deliver exceptional quality copies in a shorter period of time to the exact specifications you require. You benefit with increased productivity and money savings. Compare our services. You'll see we can handle all of your repro-drafting requirements. With the greater capacity afforded by our new SHACOH 36 we have more capability than anyone in the area. Call 372-8600 for a quick pick-up and guaranteed delivery. We'll show you what service in repro-drafting is really all about.

Mossner 372-8600

THE REPRODUCTION PEOPLE • LARGEST IN THE MIDWEST

Mossner Building • 137 North Wabash at Randolph (across from Marshall Field's), Chicago, IL 60602



Fast one-source service for all of your reproduction requirements

PHOTOMECHANICAL SERVICES

- STAR-REPRO® Drafting Systems—for pin-bar, overlay and team drafting
- Precision camera work up to 48 in. by 72 in. enlargements and reduction to 10 times.
- Autopositives
- Scissor drafting
- Photo drafting
- PencilTone® reproductions
- Xerox 600 enlargements from 35mm microfilm
- Xerox 2080—24"
- Shacoh 36—36" translucent vellum or Mylar intermediates, and paper prints—reduced or enlarged.

**105mm and 35mm MICROFILM SERVICE
DRAFTING SUPPLIES AND
FURNITURE**

WE DO IT ALL UNDER ONE ROOF

OFFSET PRINTING

- Specification sheets and booklets
- MAGI-COPY® fast printing service—ideal for architectural and engineering specifications

**BLUE PRINTS,
WHITE PRINTS,
SEPIA INTERMEDIATES
ON PAPER OR MYLAR**

Board of Directors

PRESIDENT
Leonard A. Peterson, AIA

FIRST VICE PRESIDENT
Linda Searl, AIA

VICE PRESIDENTS
Harry Hunderman, AIA
Thomas R. Samuels, AIA
Vernon Williams, AIA

SECRETARY
John H. Nelson, AIA

TREASURER
Jeff Kutsche, AIA

DIRECTORS - Through May 1992
John Eifler, AIA
Yves Jeanty, AIA

DIRECTORS - Through May 1993
James DeStefano, FAIA
Gregory Landahl, AIA

DIRECTORS - Through May 1994
Bill Bradford, AIA
Frank Castelli, AIA

PAST PRESIDENT
Sherwin Braun, AIA

ASSOCIATE DIRECTORS
John DeSalvo
Susanne Roubik

**PROFESSIONAL AFFILIATE
DIRECTOR**
Pat Rosenzweig

ILLINOIS COUNCIL DELEGATES
Jim Zahn, AIA (Through 12/92)
Michael Youngman, AIA (Through 12/92)
Ray Griskelis, AIA (Through 12/91)
Gigi McCabe-Miele, AIA (Through 12/91)
Robert Robicsek, AIA (Through 12/91)

ILLINOIS COUNCIL ALTERNATES
James Torvik, AIA
Kathleen Nagle, AIA

STUDENT AFFILIATE
Lara Nowak, School of The Art Institute

Chicago Chapter Staff

EXECUTIVE DIRECTOR
Jane Lucas

PROGRAM DIRECTOR
Kathleen Landing

FOCUS EDITOR/ADVERTISING SALES
Annette Kolasinski

**MEMBERSHIP SERVICES
DATA PROCESSING COORDINATOR**
Cynthia Gordon

FINANCIAL MANAGER
Scott E. Davis

PUBLIC INFORMATION
Melanie Brown

A M E R I C A N I N S T I T U T E O F A R C H I T E C T S

53 West Jackson
Suite 350
Chicago, Illinois 60604
312.663.4111

Second Class
Postage Paid
at Chicago, IL
