

CCCAIA FOCUS

CHICAGO CHAPTER AMERICAN INSTITUTE OF ARCHITECTS SEPTEMBER | 1989



**Concept
Chicago
89**



We've Got It!

**The people
The places
The ideas**

The CCAIA FOCUS (ISSN 0899-871X) is published monthly except for a combined July/August issue by the Chicago Chapter, AIA, 53 W. Jackson Boulevard, Suite 350, Chicago, Illinois 60604. Second class postage paid at Chicago, Illinois

POSTMASTER:

Send address changes to CCAIA FOCUS Chicago Chapter, AIA, 53 W. Jackson Boulevard, Suite 350, Chicago, Illinois 60604.

Editor:

Annette Kolasinski
Editorial Committee:
John Eifler, AIA
Frank Heitzman, AIA
Linda Searl, AIA
Cynthia Weese, AIA
Steven Weiss, AIA
Jane Lucas, Executive Director

Opinions and advice expressed in the CCAIA FOCUS reflect those of the writer only and do not necessarily reflect or represent opinions of the Chicago Chapter AIA or the American Institute of Architects. Advertising of products and services appearing in the CCAIA FOCUS does not constitute endorsement by the Chicago Chapter AIA or the American Institute of Architects

Cover photos from top left and clockwise: looking up the river, Mary Beth Carroll; the Hyatt Regency Chicago, Bill Engdahl, Hedrich-Blessing; a fascination for Chicago architecture, Mary Beth Carroll; inside the Terra, Timothy Hursley, The Arkansas Office; Frank Heitzman and Josef Asseo show we have programs to hold your interest, Lucy Kennedy; inside the Hyatt, Bill Engdahl, Hedrich-Blessing; and center, Mayor Daley breaking ground, courtesy City of Chicago.

THE CHAPTER CIRCUIT

PROGRAMS AND EVENTS

Chicago by Design/1989

Event Opens with Address by Alexander Cooper

"We are the greatest city in the greatest nation. Nothing like us ever was."

Carl Sandburg

On Saturday, September 23, the Chicago Chapter AIA and the Chicago Architecture Foundation present "Chicago by Design/1989", an unusual day-long walking tour showcasing city-wide city pride as it explores the continuing architectural legacy of Chicago. This third annual tour highlights Cityfront and Illinois Centers, cohesive communities of eclectic components embracing old and new, and renewed buildings, as well as the creative incorporation of public spaces.

The day begins with a continental breakfast at 8:30 a.m. at the Swiss Grand Hotel, 323 East Wacker Drive, with a keynote address by Alexander Cooper, partner, Cooper, Robertson & Partners, master planner for Cityfront Center. Tours will then commence with lively informative commentary provided by a host of professionals and CAF docents.

Sites to be seen include NBC Tower, Hotel Inter-Continental, the Fairmont and Forum Hotels, and Boulevard Towers, with an interior visit to architect Dirk Lohan's office. End of day festivities wrap up at North Pier/Chicago with open house tours of several architectural firms located there, plus a rousing pier party at Baja Beach Club.

Chicago's architecture is among the most vibrant and diverse to be found anywhere in the world. Over the decades, close collaboration between developers, designers, and contractors has resulted in an inimitable urban fabric. Holistically planned, it em-

bodies the precepts of enhanced utility, purposeful function, and fluid grace.

City wide city pride is well characterized in both Cityfront Center and Illinois Center, as each represents a singularity of vision that encompasses principles of multi-use planning, unification of design, and technical innovation. Participants in "Chicago by Design/1989" will learn about the client-developer relationship from an urban plan's initial concept through each stage of its completion. The involvement of architect, contractor, leasing agent, space planner, and interior designer will be illuminated throughout the tour.

CHICAGO BY DESIGN/1989 HIGHLIGHTS - UP CLOSE AND PERSONAL

Cityfront Center

► An urban environment combining office, commercial, hotel, residential, and public spaces, including exterior design for colorful vistas, corridors, plazas, parks, and river edges, with a vision toward internal design for architectural massing, colors, and materials for future buildings.

Illinois Center

► A "city within a city" celebrating the intelligent co-existence of art, architecture, and open space in a dense, 83 acre urban neighborhood. Termed a "critical mass," it has become one of the most successful examples of mixed use development over the last decade.

NBC Tower

► Cityfront Center's linchpin 40-story tower: a marvelous re-examination in the principles of design of the 1920s/30s skyscraper; restating, with an updated vocabulary reflecting contemporary conditions, the optimism intrinsic to that tradition.

Hotel Inter-Continental

► A brash bold protest, architecturally, there is nothing to represent the Chicago School here, with its Arabic designs, eclectic exterior, arched entryways and masterpiece friezes. Located adjacent to the Gothic Tribune

Tower, it is unlike anything built before or since on the Chicago skyline.

Forum Hotel

Representative of hotels currently located in Europe and the Middle East, this newly renovated building, with glass-enclosed atrium and ballroom, is the first Forum Hotel in the United

North Pier

► At one time, an inordinately long (at 1,663 feet - longer than Sears Tower laid on its side), drab, and narrow warehouse complete with dock, North Pier has since become an instant architectural success, and an even more important visual element of vast, new Cityfront Center.



States. It is immediately adjacent the Hotel Inter-Continental.

Fairmont Hotel

► Nearly one hundred years ago, a family named Fair built a hotel on a San Francisco hill and called it Fairmont. Today, in the heart of Illinois Center, another member of the Fairmont family stands, 45 stories of Rosata-pink Spanish granite with copper roofs and bay windows in the neo-classic tradition.

Prudential Plaza

► A remarkable combination of preservation perspectives and unification of architectural design, this project involves renovation of the existing 41-story tower and the construction of a new 64-story office tower with an extensively landscaped, one-acre outdoor plaza featuring two fountains.

Letters to the Editor

I am a faithful reader of the *Focus* publication and just wanted you to know how much I enjoyed Steve Weiss's article entitled "Ignoring the Domsayers" (July 1989). During a "doom phase," Weiss's persistence in pursuing the positive approach is very refreshing.

*Cheri Kellman, Vice President
Architectural Glass Division
Globe Amerada Glass Co.
Elk Grove Village, Illinois*

Find It

Ralph Caplan, Housing Community Outreach Plans, New Continuing Education Series, Planning Discussions at Cliff Dwellers, all a part of Chapter programspg. 4

Something's new at the Chapterpg. 6

Summer of '89 wrap uppg. 7

CCAIA Foundation is restructured pg. 8

It's big and bold and exciting - it's Concept Chicago '89pg. 9

The Sketchbook looks at Industrial projectspg. 18

Get more of a handle on the Indemnity Dilemmapg. 22

It's all on The Calendarpg. 26

SITE and Florentine New Towns reviewedpg. 28

Who's in The Notebook this monthpg. 29

The Distinguished Building Awards ceremony and reception is a major event of *Concept Chicago '89*. Read about this year's exciting DBA evening in the special *Concept Chicago '89* section.

Noted Design Critic Ralph Caplan to Speak Here



Photo: Sally Andersen-Bruce

To commemorate the tenth anniversary of the Chicago Chapter's Interior Architecture Committee, the committee has invited internationally acclaimed New York author, design critic, and consultant Ralph Caplan to speak in Chicago.

Caplan's presentation, "What to do Until the Designer Comes: Designers, Clients, and the Commissioned Environment," will take place on Thursday, September 21, at First Chicago Center, First National Plaza, at 6:30 p.m. Caplan will address the changing roles in client-designer relationships.

According to Jim Lehrer of the *MacNeil/Lehrer Report*, "No one knows more or writes better about design than Ralph Caplan." Caplan is the author of *By Design: Why There Are No Locks on the Bathroom Doors in the Hotel Louis XIV and Other Object Lessons*. As a writer and communications design consultant, he works with design offices, publications, filmmakers, museums, colleges and universities, and industrial corporations. Former editor-in-chief of *Industrial Design* magazine, and now contributing editor, Caplan has been published in dozens of periodicals and is the author of *The Design of Herman Miller; Connections*, a monograph on Charles and Ray Eames; and co-author of *The Design Necessity and Chair*. Caplan has taught writing and has lectured on design to hundreds of professional, university, museum, community, and corporate audiences in the United States and abroad.

Tickets are \$15 for general admission and \$10 for students. Tickets can be purchased in advance by calling the Chicago Chapter AIA at 663-4111. Tickets may also be purchased at the door.

Housing Committee Creates Variety of Programs to Educate Public and Reach Into Community

You Can Participate

Issues related to our profession that are of a concern to the general public are rare indeed. For those who are interested in altering the public's perception of architects, the CCAIA Housing Committee might be a place to start.

Housing is an issue that the American public perceives as crucial, side by side with national defense, the deficit, and public health. Here is a place where the theoretical, philosophical, and aesthetic issues important to architects can directly touch the lives of many in a very real and practical arena. E. Fay Jones has said that, "good architecture has the potential to nourish." No professionals are as capable as architects in bringing such qualities (as Jones statement so succinctly suggests) to the national problem of Housing.

The CCAIA Housing Committee is in the process of forming subcommittees and programs for 1989-90 and beyond. In one program almost completed, the Committee is working with the Metropolitan Planning Council on a proposal to rehabilitate one building in the Washington Park Public Housing Development. The paper, which proposes solutions, is entitled "Living Spaces," and is an assemblage of photographs, sketches, and text identifying problems inherent in public low-income high-rise living. A similar study was done of the Darrow Homes in the Ida B. Wells Development with the help of other architects, and is now being published. The proposals maintain that tenant involvement in the decision-making process is critical to the success of any rehabilitation attempt, and that modifying the physical environment is only part of the solution to housing low-income residences.

A wide range of other opportunities for participation is available:

► An awards program for recognition of outstanding individuals and projects related to the housing industry is being conceived for the 1990 calendar year. Anyone interested in working on this subcommittee should contact either Dan Cinelli at 940-9600 or Phil Scott at 467-1400.

► The "Search for Shelter" is an AIA program established on national and local chapter levels. We will seek solu-

tions to the temporary, transitional, and long-term housing problems of the homeless and semi-homeless that will, ultimately, lead to built projects. Contact John Jacobs at 341-0040 or Carol Berarducci at 943-8404.

► Housing Education is a subcommittee that will research, assess, and implement means to increase the awareness of the architecture community regarding housing issues. The first step in this process will be the creation of an outreach campaign. The implementation of this campaign depends on activists operating within the framework of what is traditionally a passive profession. Interested parties should contact Robert Sitkowski at 467-1400.

► The Clearing House subcommittee is a research group that will put together in a single directory of information all of the diverse groups, agencies, publications, networks, etc., that are concerned with housing issues. Such a directory is badly needed as a first step in creating an effective network and source of information. Anyone interested in working on the subcommittee should contact Juliann Sheker at 477-9587 or Kate Hauserman at 528-8177.

► The subcommittee on **Housing Publications** will promote and publicize Housing issues that bear upon architecture and the architectural profession through both the general and professional media. Anyone interested in working on this subcommittee should contact Jeff Murray at 938-4455 or Scott Fortman at 341-0040.

All of these programs are in the formulating stages of development, so now is a great time to get involved in the creation and production of these programs. For any general questions, contact Dan Cinelli, chairman, at 940-9600.

Jeffrey Murray, AIA

Continuing Education Series #1

The Changing Nature of the Practice of Architecture

The CCAIA Continuing Education Committee is developing a series of educational programs scheduled to include a long range curriculum. Topics will be presented in a four- to six-week series that will run approximately one and one-half hours each session. Each series will cover a different topic to assist the architect in professional development.

The initial series will focus on "The Changing Nature of the Office" and will include speakers from various disciplines of the building profession. The idea behind this topic is to give participants an insight into roles not traditionally practiced in an architectural office, and how the architect can capitalize on these roles. The first session will be an overview of the marketplace and the evolution of the architect's client base.

Future sessions will include discussions on non-traditional services architects are able to provide, a panel on the owner's perspective of the use of architectural services, with the final session covering the opportunities for architects based on the changing nature of the practice, with an overview of the four-week series.

The first series will be offered on Thursdays at Noon, beginning October 19, and continuing through November 9, in the CCAIA Board Room, 53 W. Jackson, #350.

The cost for the series is \$30 for members, \$45 for non-members. Single session admission is \$10 for members, \$15 for non-members. For reservations make checks payable to the CCAIA, and mail to Chicago Chapter AIA, Continuing Education Series I, 53 W. Jackson, Suite 350, Chicago, IL 60604. Reserve your space now as seating is limited.

Tom Rossiter, AIA
Werner Sabo, AIA
Paul Bodine

Discussion Series at Cliff Dwellers Will Focus on Urban Policy and Design Issues

The Planning and Urban Development Committee is pleased to announce a series of discussions on Chicago Planning and Urban Design issues. Our intention is to generate more active chapter involvement in the discussion and debate of urban policy and design issues, hopefully resulting in an expanded chapter influence in the resolution of these issues.

These discussions will be held every other month at the Cliff Dwellers Club, a traditional site of dialogue and debate of Chicago urban issues.

The first in the series will focus on an overview of Chicago planning, what vision does or should exist, in what increments it is being achieved, and what individual deals or compromises are made on a project by project basis. Journalist Lisa Goff and former Chicago Planning Commissioner Elizabeth Hollander will join several other architects to discuss this topic.

The program will be held on Monday, September 18, from 6 - 8 p.m. at the Cliff Dwellers Club, 220 S. Michigan Ave. Hors d'oeuvres will be served, and there will be a cash bar. The cost is \$13 per person and reservations are being taken at the Chapter office, 663-4111.

Subsequent programs will focus on Lakefront Planning and Development, Central Area Planning, the West Side, Industrial Corridor Redevelopment, and the future of Fort Sheridan.

Recaps of the discussions and previews of upcoming programs will appear in *Focus* on a regular basis.

Tim Griffin, AIA
Committee Chair

Real Estate Committee Recap

The Committee held its most recent event on Wednesday, May 24. "Government Commissions: The Architect's Role in Government Development" brought a healthy turnout at the M & M Club conference facility.

Arthur Nordenburg, an attorney with six years experience at the Capital Development Board (CDB) was excellent in his role as moderator of the discussion. Robert Pierce, manager/N.R.O. of the Illinois CDB discussed its history, how to obtain busi-

ness with the CDB, and how to avoid pitfalls when working with the CDB. Roland Kehe, assistant director of the University of Illinois Office for Capital Programs, discussed how the University selects and recommends architects and engineers, and what the University expects from them.

Focusing on federal government projects were Michael Szkatulski, senior vice president of development for Stein & Company, who discussed dealing with the General Services Administration from the developer's perspective, and Kenneth Marshall, president of RES-CORP Mortgage, Inc., who discussed new opportunities for architects to provide services for co-insurers of Federal Housing Authority projects.

Audiotapes of the program are available at the CCAIA office.

Programs coming up are "Developer: His Vision for Chicago" and "Marketing: Working with the Developer," both in conjunction with Concept Chicago. Following in February is our "Architects as Developers" seminar.

Please join us at our next Steering Committee meeting on Thursday, September 7, 5:30 p.m. at Skidmore, Owings & Merrill, 33 W. Monroe, 4th floor. RSVP, CCAIA office, 663-4111.

Josh M. Leavitt

1993 Chicago Convention Committee to Meet

This is your chance to make "no little plans," for the AIA Convention, which will meet in Chicago June 18, 1993, to commemorate the one-hundredth anniversary of the World's Columbian Exposition. Any persons interested in helping to plan this most important occasion should plan on attending the initial planning session on September 11, 5:30 p.m., in the Chapter Board Room. You will meet with Chapter president, Steve Weiss, who is Chicago Chairman of the 1993 Convention Committee. Please let us know that you are interested in attending this planning session by calling the Chapter, 663-4111.

Watch the October FOCUS...

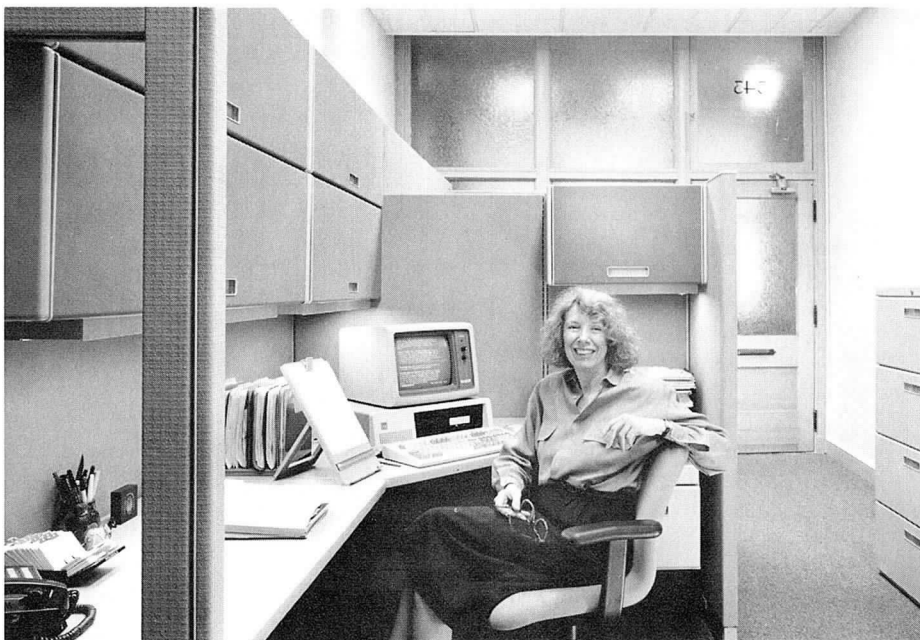
for details on the October Chapter Dinner/Meeting and November Office Practice seminar, "Growth Strategies."

Chapter Expands Its Office Space

Through the generosity of CCAIA friends, the Chapter's publishing efforts are now carried out in a delightful new space right next door to the main CCAIA office.

Suite 343 was gutted early this summer, painted, carpeted, and made ready for furniture - how many pieces and what form it would take we did not know. There was talk of doors on horses and 1 x 8s on stacked bricks style of furnishing, until a rescue phone call from CCAIA Professional Affiliate member Bill Case, chair of the Professional Affiliate Committee.

Through a friendship of many years with the president of American Seating, Edward Clark, Bill was instrumental in the Chapter becoming the owner of



An occupant of the new CCAIA publishing office is right at home in one of two new work stations presented to the Chapter through the courtesy of American Seating.

two work station units, plus two lateral files. The units were delivered the end of June, and now with everything in place the editor is very, very happy with her pleasant and functional new space with its soothing colorations and generous storage.

We are grateful to Ed Clark of American Seating for this generous contribution to the Chicago Chapter, AIA. We also thank Denise Donovan and

Kathleen Neary at the American Seating showroom at the Merchandise Mart, who, in spite of Neocon week pressures welcomed Jane Lucas and myself for a look at our new furniture, and arranged for delivery and assembly of the units.

Once again we say thank you to Bill Case, a Chapter member since 1983, who quietly does nice things for people, which is pretty routine for him. For example, Bill has donated funds to the Chapter to help pay travel expenses for students coming to Chicago to receive the Chicago Award (the annual competition for students of midwestern architectural schools). Bill's style is to request that his efforts not be publicly recognized - but we usually do. Bill's company, Bill Case Associates, Inc., is located in showrooms at the Merchandise Mart. They are a manufacturers' representative for a broad range of executive case goods and upscale seating, both traditional and contemporary, for private offices.

Steve Hall, Hedrich/Blessing

Change of Seasons Brings Change at the CCAIA

October is a time of great opportunity for the CCAIA: along with **Concept Chicago '89** and **Concept Chicago '90**, new and unique programs are being planned for 1990. While I am bidding a fond farewell to the Chapter to become director of business development for Decker/Kemp Architects, Velisa Gogins, our Chapter's new program director has already dived into the activities and responsibilities of the position. Velisa is becoming acquainted with our new committee chairs while working with them on planning their 1989/90 calendar and helping to launch their new programs.

Velisa joined the CCAIA on July 18 and comes to the Chapter from Skidmore, Owings & Merrill where she had worked for John Zils and Ferd Scheeler in the Structural Department, and most recently in the Planning Studio with Kim Goluska, Chapter Board member.

I am pleased to be working with Velisa during this special transition period as we prepare for our biggest effort of the year - **Concept Chicago '89**, October 5 and 6. The planning and coordination of this event has been very smooth; primarily because of the exceptional cooperation of CCAIA committees, the backbone of the CCAIA. President Steve Weiss has said that the success of this event "rides on the enthusiasm and dedication of our entire membership. I expect Concept Chicago '89 to be a great success because of the concern our membership has in strengthening our profession."

This is a time of positive change as the CCAIA continues to expand and reach out to all of its members by offering substantial educational opportunities. Be sure to watch your mail for information on exciting upcoming events.

Mary Beth Carroll

Editors Note: Mary Beth Carroll has made an enormous contribution to the Chicago Chapter with her amazing organizing skills, supremacy at juggling a myriad of activities, soaring energy, and good humor. Our very best wishes go with her and our biggest and best hello is extended to her successor.

One day Jack Hedrich stopped by with Bill to see the new publishing office; within moments Jack offered to send Hedrich/Blessing photographer Steve Hall to record our new space for history and to accompany this thank you letter. Like Bill, Jack Hedrich has been generous to the Chapter, and H/B's Mike Houlihan has always answered, with courtesy and quickness, this editor's last minute requests for the perfect photo to show off an article.

American Seating, Bill Case, Hedrich-Blessing: THANK YOU!

AK

Summer of '89 Wrap Up

With the May Board meeting, new members of the CCAIA Board of Directors stepped into position and were easily integrated with Board members who have been contributing their time for several seasons. Seated from left: Susan Dee, Associate Director (incoming); Sherwin Braun, First Vice President/President-Elect (former treasurer); John Tomassi, Vice President/Foundation President (incoming; former Director); Frank Heitzman, Past President; Steven Weiss, 1989-90 President; Jane Lucas, Executive Director; Alice Sinkevitch, Professional Affiliate Director (outgoing). Standing from left: Michael Youngman, Illinois Council Alternate (continuing); Margaret McCurry, Vice President (outgoing); Leonard Peterson, Secretary (continuing); Harry Hunderman, Director (continuing); Cynthia Weese, Past President (outgoing); Linda Searl, Director (incoming; former Illinois Council Alternate); Tom Rossiter, Director (incoming); Werner Sabo, Vice President (continuing); Yves Jeanty, Director (in-



coming); Robert Robicsek, Illinois Council Delegate (continuing); Paul Bodine, Associate Director (incoming); John Syvertsen, Vice President (continuing); Tom Samuels, Treasurer (incoming); Jim Torvik, Illinois Council Alternate (incoming); Morgan Fleming, Student Representative (incoming); Richard Cook, Regional Director (continuing); Ed Uhler (former Past President); Ray

Griskelis, Illinois Council Delegate (incoming; former ICAIA Alternate). Board members not pictured: Anders Nereim, Director (continuing); John Nelson, Director (continuing); Kim Goluska, Professional Affiliate Director (incoming); Jeffrey Conroy, Robert Clough, Kristine Fallon, Lee Weintraub, Illinois Council Delegates (continuing); Jim Zahn, Illinois Council Alternate (continuing).



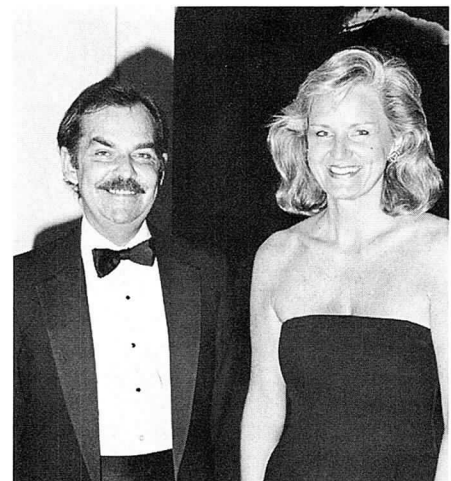
Sunday, June 18 began inauspiciously with dark clouds and rain, but ultimately Mother Nature cooperated with the CCAIA Annual Sandcastle Competition, bringing sun and blue skies in time to motivate sandbuilding teams to exciting entries to the competition. Nagle

Hartray's interpretation of this year's theme, "A Summer Cottage for Mayor Daley," put the first place feather in their cap. The winning team called their entry "Portable Vacation Bungalow."

It was a grand affair, the 1989 Interior Architecture Awards, and it was all pulled together by co-chairs Nina Hancock and Patrick McConnell, who shared the spotlight on Tuesday, June 6 at The Arts Club. It was SRO, and then some, at the awards presentation, which was followed by beautiful wine, hors d'oeuvres, and music in a space soon to greet the demolition team.



Incoming President Steven Weiss (right) shares a joke with outgoing President Frank Heitzman in making the traditional presentation of a gift to the new past president.



CCAIA Foundation is New Again

New Board is Formed and New Activity Generated

What is the CCAIA Foundation? Why does it exist? What does it do? For the past year, a task force has been working on answers to those questions - and, in the process, has revised the purpose and the structure of the Foundation.

The CCAIA Foundation began on December 3, 1969. The charter states that it was organized for "charitable, educational and scientific purposes," including "the acquisition, preservation and exhibition of rare books, documents, photographs...aiding and assisting deserving members of the architectural profession who shall be ill..." and "providing awards and grants...to needy individuals." Funds of the Foundation were all committed to scholarships as a result of bequests.

Up until a year ago the Foundation was organized from members of the Chicago Chapter Board of Directors. The seven-member Foundation Board of Trustees was composed of the president-elect, the president, and the immediate past president, who served as president of the Foundation. The other four members were immediate past presidents. This structure meant that once one became first vice president of the Chapter Board of Directors, and subsequently a trustee of the Foundation, the full commitment was for seven years.

During the past several years, the Foundation has been assuming more roles: encouraging public awareness through the "Chicago by Design" tour, as publisher for a number of Chapter awards catalogues, and in service to the profession through the Ethics Symposium. These are all events generated by Chapter committees and members that fall under the definition of the Foundation's charter.

In light of this increased activity, it seemed appropriate to re-examine the organization and goals of the Foundation. When I became president of the Foundation in June, 1988, my goals were twofold: first, to explore and define an even more expanded role for the organization; second, to restructure the

Foundation to be more independent, autonomous, and effective. With the dramatic rise in Chapter activity in the past several years, Chapter Board members have more than enough to do; in the same vein, a chapter president, after a busy year, might not want to automatically assume presidency of the Foundation.

Members of the task force to reorganize the Foundation were Lee Benish, Bruno Conterato, Frank Heitzman, Richard Cook, Ray Griskelis, and John Tomassi. Over the summer and autumn months of 1988, this group met regularly. Surveys were made of existing foundations and institutions in Chicago, and of AIA foundations across the country. We didn't want to duplicate the activity of any local group, and we wanted to learn from the experience of similar foundations.

In the past few years, a number of chapters have established very successful foundations. Philadelphia and Boston have two of the most active. Philadelphia's is directed toward public outreach; Boston's is a grant-giving group, which helps to finance programs that provide public architecture-related education.

We spent months in discussion of the purpose of the Foundation. The evolution of our joint thinking into a single direction was an interesting and rewarding process for all.

Our primary concern is that of education: public education, and education within the profession. John Tomassi put our intent into the following words:

The Foundation shall aim to enlighten the general public about architectural design and bring into focus an awareness of the architect's role in planning for and administering the building process. In doing so, it should expand the context for architectural design within the social fabric and build a stronger bond between the architect and the community.

Further, the Foundation shall maintain programs which enable the advancement of individuals toward a better understanding of architectural principles. As an educational means, it should extend the learning continuum to reach the infinite variations of cultural, technological and societal characteristics of the profession.

We then proposed to the Chapter Board a restructuring of the Foundation Board, and received their approval in January. We will continue to have seven members - only one will be a past president (at least by definition). The

immediate past president will serve as liaison with the Chapter Board. Of the other six members, at least three will not be Chapter Board members. For the sake of continuity, the task force offered to serve for one year as the first Board of the Foundation.

In past months, we have been occupied with more specific goals and strategies, and with establishing a funding plan. We are structuring the Foundation as a grant-giving body, with special emphasis on urban design issues. In June we elected John Tomassi president for the 1989-90 year.

The seven of us who have worked together for the past year are very excited about the possibilities ahead for the CCAIA Foundation. We see it as an opportunity to contribute in a special way to the city, its people, and its places.

Cynthia Weese, AIA

The CCAIA Foundation aims to enlighten the public about architectural design and bring into focus an awareness of the architect's role in planning for and administering the building process.

CONCEPT CHICAGO 89

**The Annual Tradeshow
of Building Products
and Services
for the Design
and Construction Industry
in the Midwest**

**October 5-6, 1989
Hyatt Regency Chicago
Chicago, Illinois**

**Sponsored by
Chicago Chapter, American
Institute of Architects**

**Registration
Pre-register at the discount
price by September 12 with
your Convention booklet**

Welcome to Concept Chicago '89

It's no surprise the design and execution of buildings is getting more complex and less intuitive. Participating in the creation of the built environment isn't a simple matter of making sure that the dimensions add up. In the last decade of the twentieth century, we'll all face the tremendous growth in information technology, materials technology, and, most importantly, in the way design helps to solve the problems of society. If we want to remain viable practitioners, we must develop professionally.

Concept Chicago 89 represents your best opportunity to further your personal professional development this year. You won't find a more comprehensive, better planned or executed program anywhere in the midwest. Within two days, you will have the opportunity to listen to and talk with some of the leading experts in the country in the areas of design, practice management, technology and construction delivery. You will gain the knowledge necessary to develop those skills that will become basic requirements for practice in the very near future. The opportunity to do this in your own neighborhood, rather than at a far off location, is too good to pass up!

We urge you to look over the schedule of programs, which you have received in the mail, and see for yourself the scope of opportunities available to you. If you intend to be competitive in the 1990s, we believe that you will agree that you can't afford to miss out on this opportunity.

Send in your registration now, and protect your chances to stay in the pipeline of the profession.

*Steven F. Weiss, AIA
President
Chicago Chapter,
American Institute of Architects*

*Frank Heitzman, AIA
Co-Chair
Concept Chicago
Planning Committee*

*Lee Benish
Co-Chair
Concept Chicago
Planning Committee*





Concept Chicago 89

Produced and Managed by:
Practice Management Associates for

Architects, Developers, Interior Designers,
Specifiers, Marketing Professionals,
Contractors, Engineers, Landscape
Architects, Municipal Government
Agencies, Sub-Contractors

Co-Sponsored By:

American Society of Architectural
Perspectivists (ASAP)
American Society of Interior Designers-
Illinois Chapter (ASID)
American Subcontractors Association-
Chicago Chapter (ASA)
Architectural Anodizers Council
Architectural Iron Workers of Chicago
Industry Advancement Trust Fund
The Builders Association of Chicago (BAC)
Chicago Architecture Foundation (CAF)
Construction Industry Affairs Committee
(CIAC)
Construction Specifications Institute (CSI)
Consulting Engineers Council of Illinois
(CECI)
Illinois Chapter, American Society
of Landscape Architects (ASLA)
Illinois Council, American Institute
of Architects (ICAIA)
Iron League of Chicago
Landmarks Preservation Council
of Illinois (LPCI)
Mechanical Contractors Association (MCA)
National Association of Women
in Construction (NAWIC)
Northeast Illinois Chapter,
American Institute of Architects
PCI Journal
Precast Prestressed Concrete Institute
Professional Remodelers Association
of Illinois
Residential Construction Employers Council
Sheet Metal Contractors Association
Society for Marketing Professional Services-
Chicago Chapter (SMPS)
The Society of Architectural
Administrators (SAA)
Structural Engineers Association of Illinois
(SEAOI)

Registration

Pre-register at the discount price by
September 12 with your Convention
booklet registration form. For additional
booklets call 663-4111

Schedule at a Glance

Thursday, October 5
7:30 a.m. Registration Opens
8:00 a.m. Special Political Seminar
8:30 a.m. Education Sessions
10:00 a.m. Exhibit Hall Opens
11:00 a.m. Education Sessions
11:30 a.m. Past Awards Luncheon
1:30 p.m. Education Sessions
6:00 p.m. Exhibit Hall Closes
CCAIA Awards
& Reception

Friday October 6
7:00 a.m. Reunion Breakfasts
Registration Opens
8:30 a.m. Education Sessions
10:00 a.m. Exhibit Hall Opens
11:00 a.m. Education Sessions
1:30 p.m. Education Sessions
3:30 p.m. Education Sessions
6:00 p.m. Exhibit Hall Closes
7:00 p.m. ASAP Exhibition
Opening/Reception

Challenge Your Mind; Explore New Dimensions

The whole spectrum of design expertise is reflected in a thought-provoking seminar program. Choose from technical, management, marketing, regulatory, environmental, or legal presentations that offer profound insights into the state of the industry today. Like our profession, they are fast-paced, focused, and stimulating. The faculty represents industry, government, and academia: practitioners who understand your problems and are prepared to deliver solutions.

Special Seminar

Thursday, October 5
8 a.m. - 11 a.m.
Registration fee: \$30

Architecture and the Political Process: A Hard Look at Procedures and Possibilities

Michael E. Dunn, President
Michael E. Dunn & Associates, Inc.
Washington, D.C.

Drawing from over a decade of experience in the public affairs arena, Mr. Dunn will explore the competitive nature of American government and the necessity of design professionals to compete within that system. He will review the dynamics of the legislative process, including the political factors that impact legislative decision making, the key power centers within the Congress, and the key decision points within the process. He will also focus on the role of individual architects in influencing policies that affect their profession and their personal lives. A case study of one AIA chapter's successful Political Action Committee (PAC) will be presented, along with advice on how to incorporate that experience into political action on the part of other design professionals. Mr. Dunn is a long-time observer of the Washington scene, and a long-time player in the halls of government.

Special Events

Special Events Promise Unmatched Style and Substance

Design professionals know when it's time to work and when it's time to play

At Concept Chicago 89, there is plenty of opportunity for both

CCAIA Distinguished Building Awards Ceremony and Cocktail Reception - Shaping a New Tradition

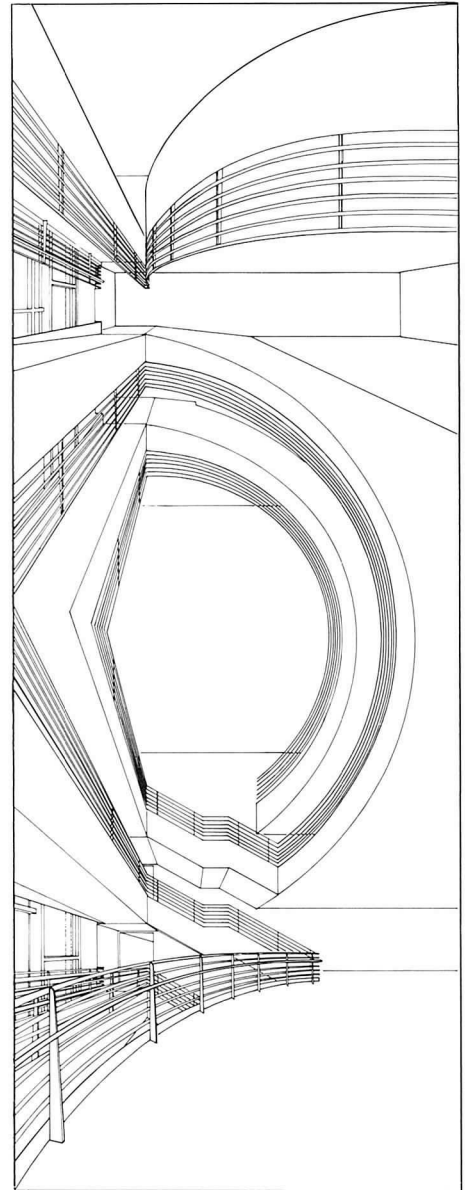
The 1989 Distinguished Building Awards Ceremony, the CCAIA event of the year, and one we all look forward to, is taking on a new look as it becomes an important aspect of Concept Chicago. The 1989 ceremony and its reception celebration will be held on the opening night of Concept Chicago '89 from 6 - 10 p.m.

After an exciting first day of Concept Chicago activities, DBA ticket holders will gather in the Hyatt's Wacker Hall for a cocktail. This gives everyone an opportunity to meet up with friends and colleagues before moving upstairs to the Grand Ballroom to honor the 1989 award winners.

Ray Ovresat of VOA Associates will host the evening's activities as a cast of fellow architects present awards in the categories of Distinguished Buildings, the Young Architect, the Twenty-Five Year Distinguished Building, Distinguished Restoration, the Chicago Award, and the Divine Detail.

The Distinguished Service Award will also be presented, honoring Jack Hartray, FAIA, and Leon Despres for their dedication and contributions to the professions. After this full day at the Hyatt, you will escape and proceed five blocks north on Michigan Avenue to the award winning Terra Museum designed by Larry Booth, FAIA. Here you will view a wonderful American Art Collection while enjoying cocktails and hors d'oeuvres to the lively sound of Fireworks Jazz.

Wow! What an opening night this will be. Make your reservations now by mailing in the response form on the invitation, along with a check for \$25, made payable to Concept Chicago '89, by September 12. All reservations are to be sent to: Concept Chicago '89, Event #903, Ten Midland Avenue, Newton, MA 02158.

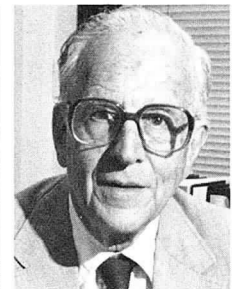


Rendering: Rael D. Slutsky & Assoc., Inc., 1989, Bishops Gate Phase 9/10, London, Skidmore, Owings & Merrill

Distinguished Service Award Recipients



Jack Hartray, FAIA,



Leon Despres

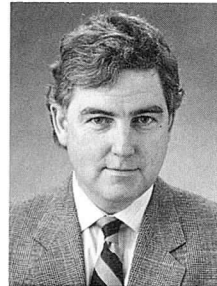
Special Events - Cont.

Art by Architects

This challenge to CCAIA members requires the submission of artistic works in any medium of their choice, including photography, painting, sculpture, or other. Selected entries will be exhibited throughout the trade show floor. Cash prizes will be distributed in a special presentation at the closing cocktail party. The Art by Architects jury is Stanley Tigerman, FAIA, Chairman; Bill Kurtis, CBS Channel 2; Anthony Jones, President, School of the Art Institute; Ed Paschke, Painter and Professor of Art, Northwestern University; Richard Hunt, Sculptor.



Stanley Tigerman, AIA



Anthony Jones



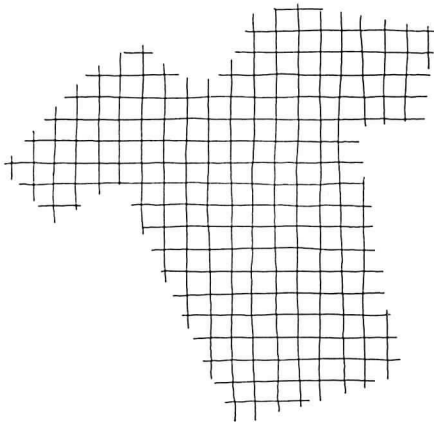
Bill Kurtis



Ed Paschke

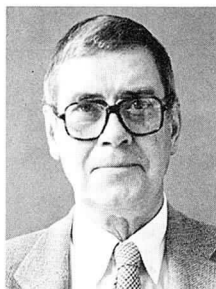
T-Shirt Competition

Designs of our times will be displayed from the submissions of the first CCAIA T-shirt design competition. Winning designs will be produced on T-shirts and will be sold, along with books, gifts, and other tidbits.



Past Awards Luncheon

This is a time to applaud past recipients of AIA Design Awards. It is a time to publicly acknowledge pride in a great profession by recognizing those whose works have left such a mark on our ever-changing world. Be sure you're there on Thursday, October 5 from 11:30 a.m. to 1 p.m., in the Hyatt's Ballrooms A and B, to offer your own congratulations. The luncheon will be hosted by Frank Heitzman, AIA, CCAIA Past President; John Holabird, FAIA, Holabird & Root; Cynthia Weese, AA, Weese, Hickey, Weese. Please register by September 12.



John Holabird, FAIA

Design Contest

This novel competition for university-level students and interns in the design profession, and Associate level architects tests the originality of tomorrow's leaders. Contestants in teams of five will express their creativity on the exhibit floor with Legos Systems - each hoping to construct a masterpiece. Work on each design will start on Thursday from 10 a.m. - 6 p.m. and will continue on Friday from 10 a.m. - 4 p.m. Cash prizes will be awarded at the close of the show on Friday. For more information call 312/663-4111.

Design-In

Key professionals in their field will present a two hour opportunity to learn about how the design process works to create a successful project in each of four building types.

Theatre Design:

- Daniel Coffey, AIA
- Larry Kirkegaard, Acoustical Consultant

Justice Facilities Design:

- Walter Sobel, FAIA

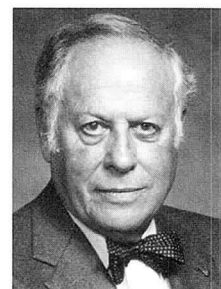
Historic Preservation Design:

- John Vinci, AIA
- Harry Hunderman, AIA
- Deborah Slaton

Interior Design:

- Greg Landahl, AIA

Each building type will be presented at different times, 10 a.m. - Noon and 3 - 5 p.m. each day. Check the on-site program for presentation times.



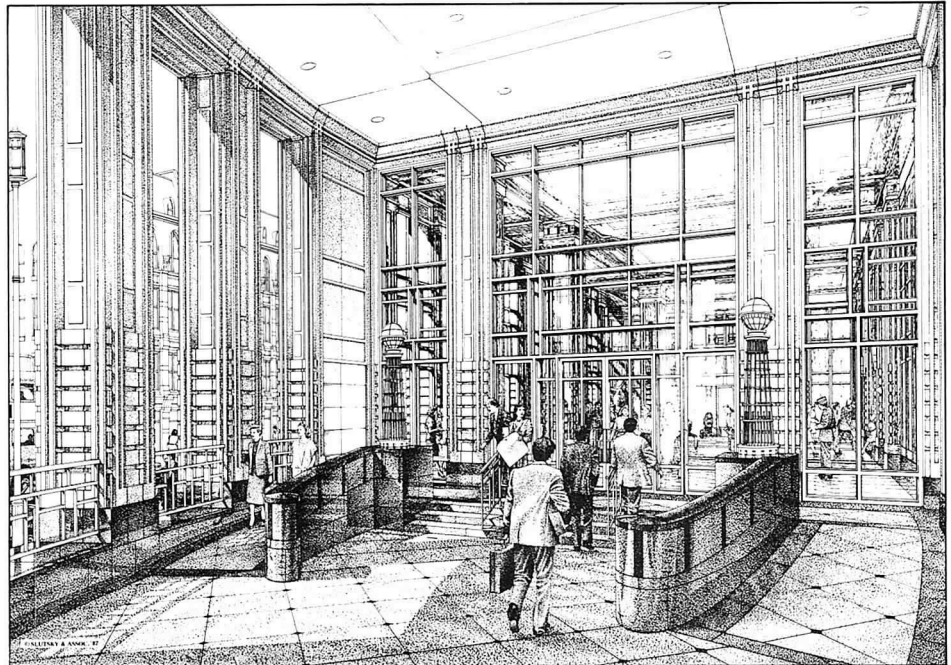
Walter Sobel, FAIA



Grand Finale

A convention highlight will be the Friday, October 6 open house at the offices of various architects and viewing of an exhibition of architectural renderings mounted by the American Society of Architectural Perspectivists.

A warm and hospitable welcome to our great metropolis will be extended by VOA Associates Inc.; Loeb Schlossman & Hackl, Inc.; Lohan Associates; Nagle, Hartray & Associates, Ltd.; and The Office of Christopher H. Rudolph, AIA, P.C. beginning at 6 p.m. At 7 p.m. the party continues at Fullerton Hall of the Art Institute for a buffet and the presentation of The American Society of Architectural Perspectivists awards. A dramatic exhibit by their members, an impressive collection reflecting the unique approach of this talented group, features award-winning entries from the ASAP's annual nationwide competition. Works from China, Japan, Great Britain, Australia, and Canada are included. Please register by September 12.



Rendering: Rael D. Slutsky & Assoc., Inc., 1989, Bishops Gate Phase 9/10, London, Skidmore, Owings & Merrill

Alumni Breakfasts

Three special alumni groups will have the opportunity to gather and kick off a busy day of events with a hearty breakfast and pleasant conversation mingling with old chums.

Harvard Graduate School of Design
(Underwritten by Kirkegaard & Assoc.).
CCAIA Past Presidents and CCAIA 25-Year or More Members (\$12).

Breakfast is Friday, 7 a.m. See "Program Schedule" location. Register by Sept. 12.

Hospitality Area

Sit, relax, enjoy the CCAIA Hospitality Area on the exhibit floor during Concept Chicago '89. The Women's Architectural League will serve as hostesses and will provide free passes to the Art Institute and exhibits. A mini-exhibit of the American Society of Architectural Perspectivists show, which opens at the Art Institute on Friday evening, will be on display in the Hospitality Area.

Tours of the Hyatt Regency

Walter Basich, AIA will conduct tours of this spectacular building telling the "inside story" associated with its special technology. Every structure has its own history, its own ambience, and its own impact. The Hyatt Regency is no exception, so come explore and inspect one of Chicago's exciting structures.

Sign up in the convention hospitality area for tours at 10 a.m. and 2 p.m. on Thursday and 10 a.m., noon, and 2 p.m. on Friday.



Walter Basich



One of two beautiful lounges in the Hyatt Regency Chicago. Photo: Hedrich-Blessing

Program Schedule

THURSDAY, OCTOBER 5

ROOM	7:00 A.M.	7:30	8:00	8:30	9:00	9:30	10:00	10:30	11:00	11:30	12:00 P.M.	
Grand C												
Grand A				501 How to Kick Start Your Brain When Your Mind is Rundown					902 Past Awards Luncheon			
Grand B			901 Special Political Seminar: Architecture and the Political Process									
Columbus G				101 How To Manage Time Before Time Manages You				504 Computer-Aided Rendering: Past, Present and Future				
Columbus H				102 Gaining Insight From Works in Progress I				106 Evolution of the Skyscraper Gives Life to Tomorrow's Projects				
Columbus I				103 Creative Steps to Sound Financial Planning				107 How the Powerful Element of Lighting Aesthetics Can Work for You				
Skyway 265				502 Architectural Design in Perspective				108 How to Understand and Use Architectural Criticism				
Skyway 268				104 How to Anticipate Your Clients' Expectations				109 Five Ways to Pack a Punch With Direct Mail				
Skyway 269									110 Learning the Secrets of Working with Developers			
Skyway 273				105 Cut the Production Knot with Laser Printing and Plotting				505 Buildings as Business Development Tools				
Palmer House			503 Consulting Engineers Council of Illinois Board Meeting						506 CECI Fellows Recognition Dinner			

FRIDAY, OCTOBER 6

ROOM	7:00 A.M.	7:30	8:00	8:30	9:00	9:30	10:00	10:30	11:00	11:30	12:00 P.M.	
Grand A			512 Office Practice Overview						128 Engineering Consultant/Architect Relationships and Coordination			
Grand B				123 The Dynamics of Developers in Design: Working in Chicago				129 Beyond the Waterproof Membrane: Trends in Interior Architecture				
Columbus G	801 CCAIA Past Presidents Breakfast			513 The Rehabilitation Investment Tax Credits				130 Unraveling the Mystery Behind Professional Liability Premiums				
Columbus H	802 Harvard Design Alumni Breakfast			124 Three Case Studies: Preserving Historic Resources				131 Discovering the Opportunities in Airport Facility Design				
Columbus I				125 Nine Essential Issues in Ownership Transition				132 How to Use Mediation as a Cost Reduction Tool				
Skyway 265				514 Architectural Flush Wood Doors: New AWI Standards				517 Market Research: What Image Studies Can and Can't Do For You				
Skyway 268				515 Collaborative Approach in Site Planning Design				133 How to Find and Keep Clients				
Skyway 269				126 Tips for Collecting Fees Fast								
Skyway 273				127 Creating First-Rate Construction Documents With CADD				134 The Power To Be Your Best: Macintosh Personal Productivity Centers				
Palmer House				516 An International Review of Architectural Renderings				518 Alternative Media: Architectural Rendering and Graphic Presentations				
Art Institute												



1:00	1:30	2:00	2:30	3:00	3:30	4:00	4:30	5:00	5:30	6:00	6:30	7:00
										903 CCAIA Distinguished Bldg. Awards Ceremony & Reception		
					111 Streamlined Construction Administration Can Save Money							
						118 How to Evaluate the Need for Professional Project Management Services						
					112 Building in Quality Assurance Before the Roof Caves In							
					507 The Pursuit of Quality and Perfection...							
						509 Public Relations: More Than Getting Published						
					113 Avoid Litigation With the Provisions of AIA Document A201							
						119 Reducing Risk Before Disaster Strikes						
					114 An Inside Look at the Renovation of the Chicago Tribune							
						510 Specifying Principles						
					115 Why Do High Rises Look the Way They Do?							
						120 How to Prevent a Disastrous High Rise Fire						
					116 How to Motivate Your Principals and Project Managers							
						121 Two Ways to Turn "User-Friendly" Into Reality						
					508 The Role of Marketing in Ownership and Management Transition							
						511 Technical Considerations in the Use of Metals in Construction						
					117 Penetrating the Print Barrier: How Editors Make Decisions							
						122 How to Use Computer Technology Competitively						

**EXHIBIT HALL
HOURS:
10:00 A.M. -
6:00 P.M.**

30n

1:00	1:30	2:00	2:30	3:00	3:30	4:00	4:30	5:00	5:30	6:00	6:30	7:00
					135 How I Succeeded in Architecture and Managed to Have a Personal Life							
						140 Practitioner vs. Academician: Squaring Off						
					519 Environmentally Safe Architectural Finishes							
						141 Gaining Access to Information: Organizing Your Firm's Resources						
					136 How to Avoid Computer-Aided Mistakes as Liability Standards Change							
					137 Profiles in Downtown Restoration Projects							
						142 Gaining Insight From Works in Progress II						
					138 A Futuristic Look at Design in Chicago							
						522 Computer Systems for Architects						
					139 The Secrets of Winning Presentation Techniques							
						143 How to Get a Handle on Quality Control						
					520 Industry Recommended Changes to A201							
						144 Getting the Most Out of Computer-Aided Project Management						
					521 Shop Drawings/Design Liabilities of Contractors and Subcontractors							

**EXHIBIT HALL
HOURS:
10:00 A.M. -
6:00 P.M.**

904
ASAP
Event



Everyone You Want to See Will be at Concept Chicago 89

When you choose the right product or service for your project, everything you do works better. This is where you'll find everything that's distinctive, new, and reliable.

Architectural Ornament
Art Dealers/Consultants
Brick Suppliers
Carpet Suppliers
Communications/Electronic Mail
Computers
Construction Equipment
Consultants
Copiers
Door Manufacturers
Drafting Equipment
Energy Products
Financial Advisors
Flooring Suppliers
Furniture Companies
Heating Systems
Insurance Companies
Kitchen Companies
Lettering Equipment
Lighting Suppliers
Masonry Products
Metal Products
Office Furniture
Oriental Rugs
Panel Products
Photographic Media

Prefab Buildings
Publications
Reprodrafting Supplies and Equipment
Security Systems
Sign Companies
Specification Services
Stone Product Manufacturers
Tile Suppliers
Trade Associations
Wallboard Suppliers
Wall covering Suppliers
Window Manufacturers
Wood Product Manufacturers

Registration
Pre-register at the discount
price by September 12 with
your Convention booklet

The Hyatt Regency Chicago
Site of Concept Chicago '89
Photo: Hedrich-Blessing



Concept Chicago 89 packs a punch. It is your ticket to a highly visible position in a competitive marketplace.



THE FINEST ARCHITECTURAL & TECHNICAL TEMPS!

Including:

- Registered Architects
- Architects
- Piping & HVAC Designers
- Electrical Designers
- Architectural Designers
- Architectural Drafters
- Illustrators
- CAD Specialists
- Interior Designers

BECO

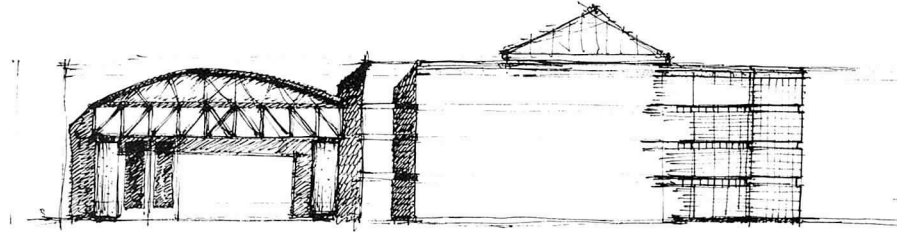
**The BECO Group
Architectural Division**

200 S. Prospect
Park Ridge, IL 60068

Suburbs **825-8000**

Chicago **693-1930**

Sketchbook



Industrial Buildings

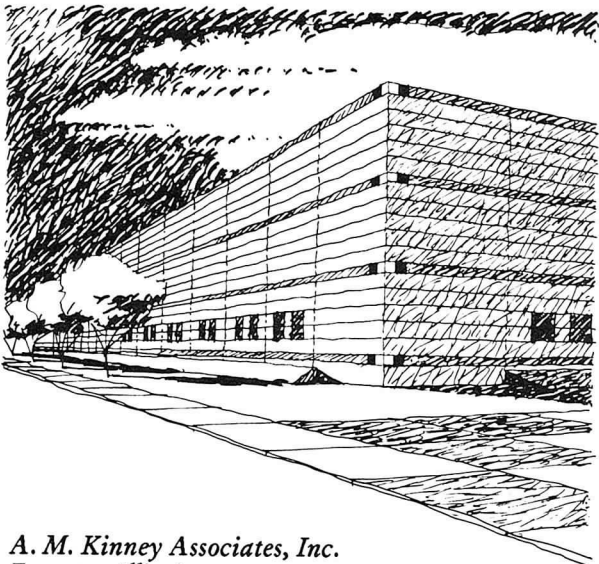
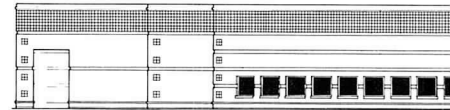
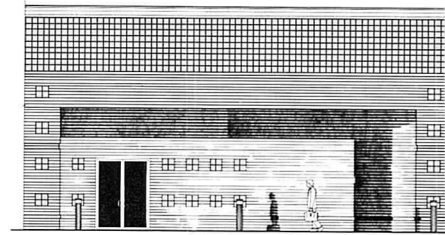
The industrial building has traditionally been a benign and utilitarian design problem, but with more intense competition among developers, the architecture has become an important part of the marketability of the building.

Steve Saunders, AIA

See Sketchbook schedule for next seven months on page 20

Building "B" *Greenpoint Technical Park* *Elmhurst, Illinois*

In this 110 sq. ft. build-to-suit for Spiegel, the first of six buildings designed by ESA in Greenpoint, a 33-acre technical park., maximum security was important and the client requested that a minimal amount of windows be used. The pair of gentle curves on the front were generated by a curve in the highway beyond. The project is a 1987 Excellence in Masonry Silver Medal winner. The sketches show how the designer's original concept survived all the changes and criticisms to the building's final stage.

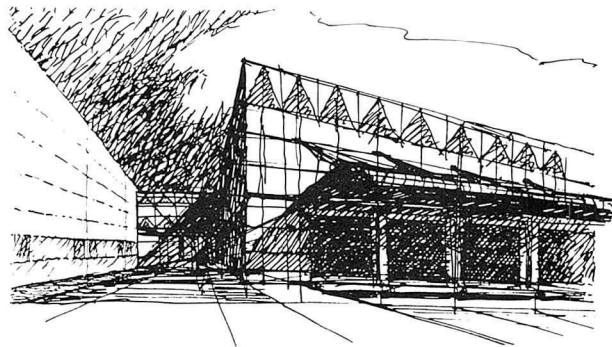


Warehouse Facility *Skokie, Illinois*

This 165 sq. ft. building, connected to an adjacent facility by a two-level link, is the latest addition to the Fel-Pro, Inc. complex. It is at the forefront of the manufacturer's technological master plan. Fel-Pro's in-house architect, S. Forsyte, AIA, served as project architect for the new warehouse facility, which is clad in a flush, cleanly detailed metal panel skin. Horizontal accent bands provide visual relief, and rhythmic eyelevel fenestration contributes a sense of scale.

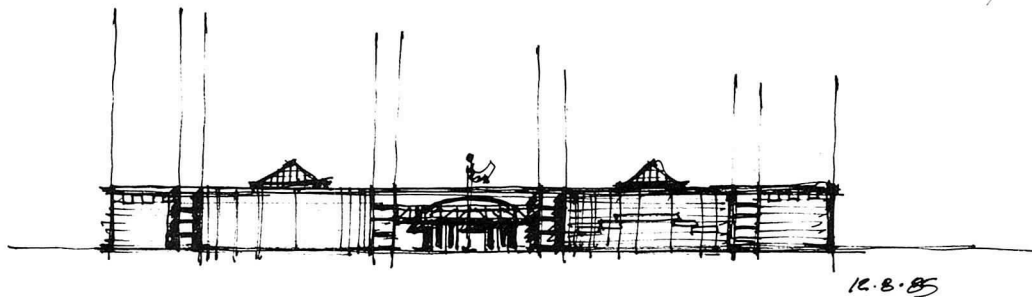
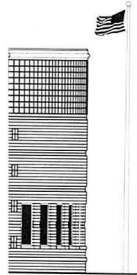
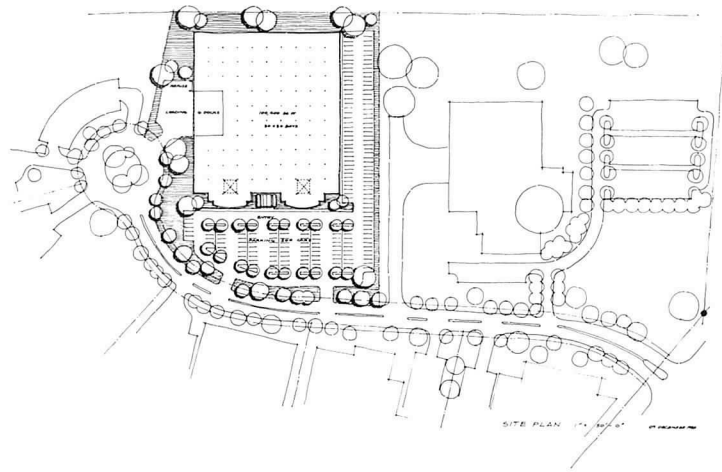
A. M. Kinney Associates, Inc. *Evanston, Illinois*

Established over 25 years ago, the multi-disciplined architectural and engineering firm offers a diversified national practice with special expertise in the industrial sector and in research and development facilities. Among the firm's industrial projects are numerous warehouse/distribution facilities for corporate clients such as Walgreens, Abbott Labs, J. I. Case Company, and The Quaker Oats Company.

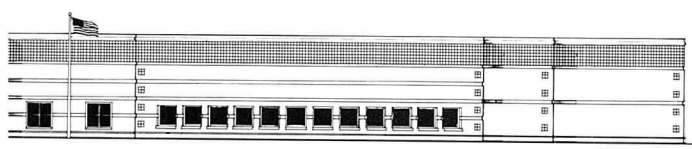


Eckenhoff Saunders Architects
Chicago, Illinois

ESA was founded in 1983 by Walter Eckenhoff and Stephen Saunders, and has grown to a 15-person office, specializing in adaptive rehab, corporate, commercial, industrial, and custom residential architecture. ESA has now completed contract documents on over 15 industrial office buildings over the past three years. Recent projects include Canal Center, a 800,000 sq. ft. office building in Chicago; three office/industrial buildings totaling 167,000 sq. ft. in Lincolnshire; and the masterplan and design for a 250-unit housing development in Hoffman Estates.



12.8.85



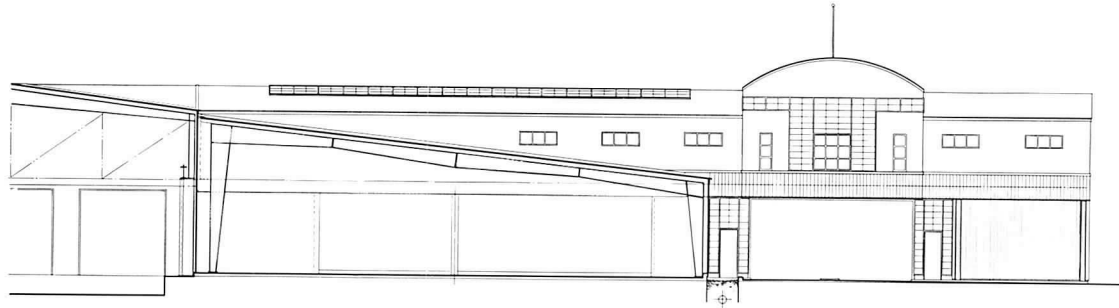
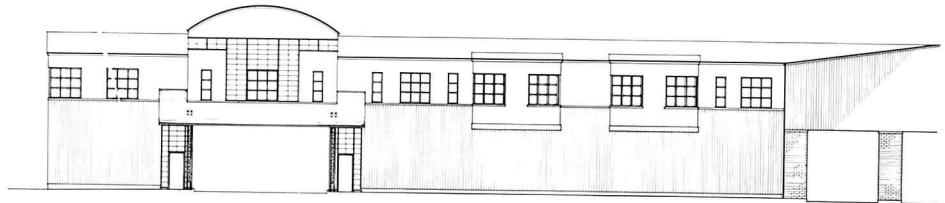
Harris Steel Company

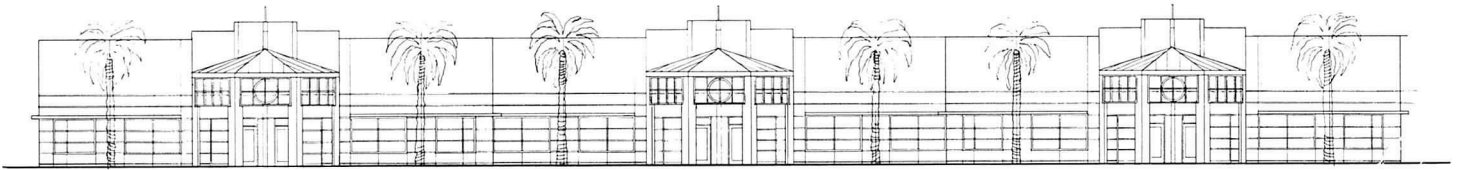
This building houses the executive and administrative functions of a much larger sheet steel processing plant. The offices at the second floor bridge across the main employee and visitor entry to the plant, as well as the lobby on one side, and storage space on the other. The parti attempts to reflect the company's focus on the people acquiring, processing, and distributing their product; their role as links between the producers and the users; and as an extension or evolution of their plant and processes.

James Morris Kutyla
Chicago

The firm is a full service architecture and interior design firm located in Chicago since 1984. It takes on a wide variety of work in-

cluding theatres, office buildings, churches, industrial facilities, retail, and residential work. Recent and current projects include the Step-penwolf Theatre - a 500-seat legitimate theater, and Willow Street Carnival - a 450-seat cabaret theater.

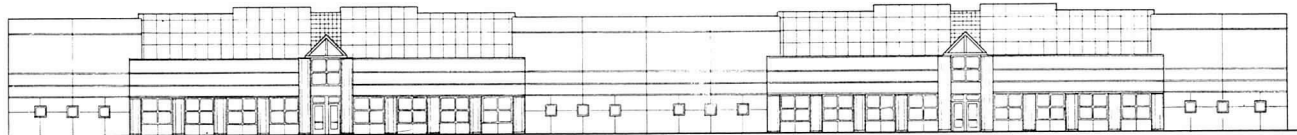




***Distribution-Tech Center
Weston, Florida***

This 45,000 sq. ft. "Deco-Tech" multi-tenant building is planned for tenants, with about 25% office and 75% warehouse/manufactur-

ing. The facility is one of three Phase One Spec Buildings in a business campus to be constructed on a site facing a lake and a park entrance. The canopy entries relate to waterfront gazebo forms.



***Warehouse-Manufacturing Center
Weston, Florida***

This 42,000 sq. ft. multi-tenant building is planned for tenants with 24' clear height requirements. The lowered office portion works to relieve the high bulk scale of the facility. The Florida colored, Post-modern image is one of three Phase One Spec Buildings in a business campus to be constructed on a corner site.

***Richard A. M. Potokar Inc.
Riverside, Illinois***

Founded in 1987, the firm specializes in land planning and architectural services for business parks, including office/research, office/industrial, and warehouse/distribution. Currently, the firm is the designer for a 240,000 sq. ft. office building in Elgin.

Sketchbook Schedule

- November - DAYCARE CENTER & DESIGNS FOR CHILDREN, including furniture. Materials due September 20.
- December - SHOPPING MALLS, STRIP CENTERS. Materials due October 18.
- January 1990 - SHELTERS. Materials due November 20, 1989.
- February 1990 - HEALTH FACILITIES/TREATMENT CENTERS. Materials due December 15, 1989.

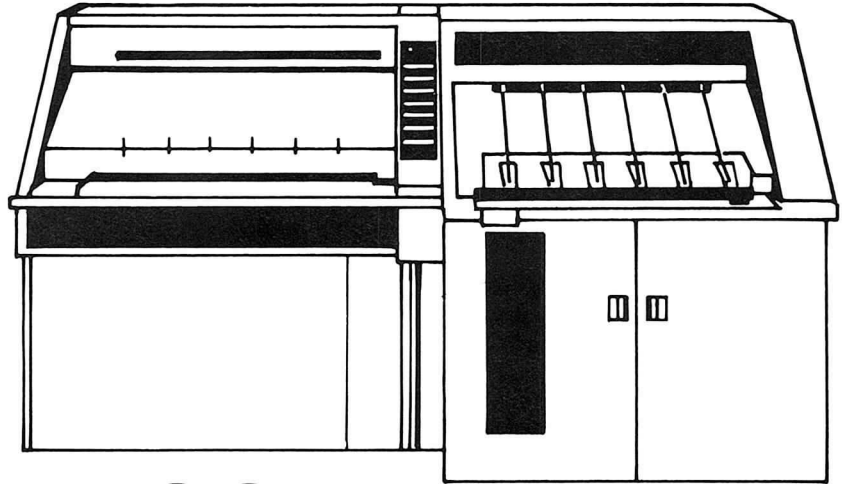
- March 1990 - PUBLIC & GOVERNMENT BUILDINGS. Materials due January 17, 1990.
- April 1990 - SINGLE FAMILY HOUSING. Materials due February 19, 1990
- May 1990 - PRESERVATION. Materials due March 19, 1990

Please submit a PMT of sketches and/or hardline drawings in a format no larger than 11" x 17". Conceptual/preliminary sketches are of particular interest. Line drawings that do not require the making of a half-tone are preferred. You should send a description of your firm, up to 60 words, and keep the description of the project to 100 word so that space can be devoted to drawings.

MOSSNER now has more repro-drafting capability than anyone in the Chicago area.

FIRST IN CHICAGO

Now...50% more capacity to enlarge and reduce drawings



INTRODUCING THE **SHACOH 36** COPIER

- Enlargements to 210%
- Reductions to 45.8%
- Increments of 1/10 of 1%
- Widths to 36"
- Variable Lengths
- Exceptional Reproduction

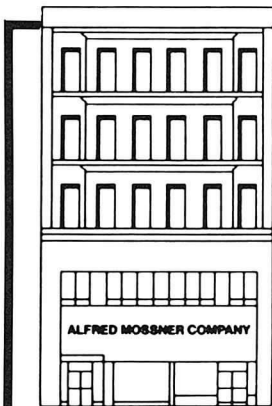
With the new SHACOH 36 added to our two XEROX 2080 copiers, Mossner has the most modern computer controlled repro-drafting capability in the Chicago area. The SHACOH 36 is the most versatile and the most accurate copier on the market today. And it's first in Chicago at Mossner, the largest reproduction house in the Midwest.

The new SHACOH 36 allows us to deliver exceptional quality copies in a shorter period of time to the exact specifications you require. You benefit with increased productivity and money savings. Compare our services. You'll see we can handle all of your repro-drafting requirements. With the greater capacity afforded by our new SHACOH 36 we have more capability than anyone in the area. Call 372-8600 for a quick pick-up and guaranteed delivery. We'll show you what service in repro-drafting is really all about.

Mossner 372-8600

THE REPRODUCTION PEOPLE • LARGEST IN THE MIDWEST

Mossner Building • 137 North Wabash at Randolph (across from Marshall Field's), Chicago, IL 60602



Fast one-source service for all of your reproduction requirements

PHOTOMECHANICAL SERVICES

- STAR-REPRO® Drafting Systems—for pin-bar, overlay and team drafting
- Precision camera work up to 48 in. by 72 in. enlargements and reduction to 10 times.
- Autopositives
- Scissor drafting
- Photo drafting
- PencilTone® reproductions
- Xerox 600 enlargements from 35mm microfilm
- Xerox 2080—24"
- Shacoh 36—36" translucent vellum or Mylar intermediates, and paper prints—reduced or enlarged.

OFFSET PRINTING

- Specification sheets and booklets
- MAGI-COPY® fast printing service—ideal for architectural and engineering specifications

**105mm and 35mm MICROFILM SERVICE
DRAFTING SUPPLIES AND
FURNITURE**

**BLUE PRINTS,
WHITE PRINTS,
SEPIA INTERMEDIATES
ON PAPER OR MYLAR**

WE DO IT ALL UNDER ONE ROOF

The Indemnity Dilemma

By Mark C. Friedlander

The most frequent and frustrating kinds of claims against design professionals arise out of construction site accidents. It is well established that the contractor, not the architect/engineer, is responsible for jobsite safety. Yet, whenever a workman is injured, it is a good bet that the A/E will be sued along with the contractor and any other potentially involved parties.

In these cases, the design professional usually prevails, but only after having spent thousands of dollars in attorney's fees, all chargeable to the A/E under the deductible in the professional liability insurance policy. Meanwhile, the contractor (and usually the owner), is defended under a general liability policy with a small or non-existent deductible, so that the lawsuit ends up costing them virtually nothing except some time and bother.

Sophisticated design professionals employ several contractual devices to attempt to limit their liability in these situations. The three most frequently used devices are:

1. Limitation of liability clauses
2. Indemnity clauses
3. Being named as an additional insured on the contractor's insurance policy.

Limitation of Liability Clauses

These are clauses that state that the design professional shall never be liable for more than a given sum as a result of any error or omission committed by the design professional. The sum chosen may be the limit of the A/E's insurance coverage, the total fee received by the A/E for the project, or any other randomly chosen number.

The problem with these clauses is that they solve the wrong problem. Although the courts have held them to be enforceable, they are only effective



When a workman is injured, it is a good bet the A/E will be sued along with the contractor

against the other party to the contract, namely the owner. An injured workman, who has not signed any agreement limiting the A/E's liability, will not be bound by the limitation of liability clause.

Indemnity Clauses

Indemnity clauses seek to make the contractor responsible for both assuming the A/E's defense and making any necessary payment of settlement or judgment in a worker injury case. This clause must appear in the *Owner/Contractor Agreement* to be effective against the contractor. In the AIA A201 *General Conditions* document, the indemnity clause is found in Section 3.18. Most of the standard form construction agreements contain essentially similar indemnity clauses.

All of the standard form indemnity clauses contain various flaws or weaknesses. Since they are in the *Owner/Contractor Agreement*, they can be modified or deleted without the A/E's consent. This can be remedied by including a provision in the A/E Agreement requiring the owner to include the intact indemnity clause in the construction contract. Most indemnity clauses do not include reimbursement of the design professional's costs and attorney's fees spent enforcing a recalcitrant contractor to abide by the terms of the clause. They do not include a waiver of the contractor's right to contribution, and they do not explicitly make the A/E a third party beneficiary.

These flaws are relatively minor and easily correctable. In Illinois there is a far worse flaw. Under the Illinois Anti-Indemnity Act (Ill. Rev. Stat. ch. 29, section 61), these indemnity clauses are rendered either entirely void or largely useless.

The Illinois Anti-Indemnity Act states:

"With respect to contracts or agreements, either public or private, for the construction, alteration, repair or maintenance of a building, structure, highway bridge, viaducts or other work dealing with construction, or for any moving, demolition or excavation connected therewith, every covenant, promise or agreement to indemnify or hold harmless another person from that person's own negligence is void as against public policy and wholly unenforceable."

This law has been held applicable to claims for violation of the Illinois Structural Work Act as well as to claims of pure negligence.

At least in practice, the Anti-Indemnity Act renders indemnity clauses little more than useless. Whenever an injured worker sues an A/E, the complaint is going to allege negligence or a violation of the Structural Work Act. When the A/E demands that the contractor indemnify it, the contractor will refuse, claiming the indemnity clause to be void since it requires indemnification against a claim of negligence. Then the design professional is forced to defend himself or herself.

Under this law, the only value of an indemnity clause is when the A/E successfully defends himself or herself and obtains the court's finding that the A/E was not negligent. Then, only after incurring all of the defense costs, can the A/E attempt to seek reimbursement from the contractor. And even this remedy is uncertain and expensive, since the contractor would likely claim that the Anti-Indemnity Act renders the entire clause void, regardless of the A/E's successful result in court.

An important loophole in the Anti-Indemnity Act is that it does not apply to contractual provisions that require a contractor to purchase insurance covering another party's negligence. These provisions are still valid and enforceable. However, the insurance industry has its own pitfalls.

The A/E as an Additional Named Insured

When preparing the insurance provisions of the specifications, the savvy A/E includes a requirement that the contractor name the design professional as an additional named insured on the contractor's liability policies. The theory is that when the contractor's general liability insurer defends a jobsite accident claim on behalf of the contractor, the insurer can

simultaneously defend the design professional. The effect would be the same as an indemnity clause: the insurer pays the attorney's fees to defend the claim, plus any settlement payment or judgment, up to the limit of the policy.

There are two problems with this risk-shifting device - one minor and one major. The minor problem is that contractors' general liability carriers often refuse to name the A/E as an additional insured unless professional liability insurance is also carried by the A/E. The major problem is that contractors' general liability policies do not cover negligence claims against design professionals.

In the eyes of the law, an A/E has a different status from a contractor or owner. The A/E is a professional, held to a different standard of care. A negligence claim against a contractor (or owner) is considered a general liability claim, but a negligence claim against a design professional is considered a professional liability claim.

Contractor's general liability policies all specifically exclude coverage for professional liability claims. The courts have upheld this distinction. Thus, even if essentially identical negligence claims are made against an A/E and a contractor, the contractor's general liability insurer may properly defend the contractor (and owner) but refuse coverage of the design professional. Since virtually every conceivable negligence claim against an A/E will be a professional liability claim, being named as an additional insured on the contractor's general liability policy is next to useless.

A Possible Solution

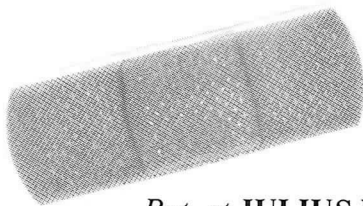
Between the Anti-Indemnity Act and the coverage limitations in the insurance industry, it is virtually impossible to draft an effective risk-shifting clause in Illinois. The only potentially workable solution would be to require the contractor to provide professional liability insurance coverage for the design professional, with no deductible and at the contractor's expense. Although it has never been tested in the courts, the following clause attempts to shift the risks in a legal and enforceable manner:

Contractor promises and warrants that insurance coverage will be provided by the Contractor for the Architect, the Architect's employees, agents, and representatives, with insurance coverage

Continued on page 24

ARCHITECTS ENGINEERS DESIGNERS

A Band-Aid Doesn't Prevent an Injury!



Neither does insurance.

*But, at JULIUS MOLL & SON, Inc.,
we anticipate problems before they occur.*

*Your call to 312-286-7737 will be "ouchless."
We promise*



**JULIUS
MOLL &
SON inc.**
INSURANCE SINCE 1901

Michael A. Sobel, CPCU
6160 North Cicero Avenue
Chicago, Illinois 60646

**Customized Proactive rather than Reactive
Insurance Risk Management**

AVA INSURANCE AGENCY, INC.

INSURANCE FOR PROFESSIONALS

20 N. Wacker Drive, Suite 2600
Chicago, Illinois 60606
(312) 236-3571

**Insurance Specialists
for
Architects and Engineers**

AIA Contracts
arbitration - litigation
legal matters

LAW OFFICE OF WERNER SABO

18 South Michigan
Suite 1200
Chicago, IL 60603

tel: 332-2010
fax: 332-5649

Design A Comprehensive Professional Liability Insurance Program

Including:

- Telephone Legal Counseling
- Application Assistance
- Policy Review
- Premium Payment Option

For:

- Architectural and Engineering Firms
- Design/Build Firms
- New Practices
- Specific Project Policies

Woodward Insurance Services

eia A Division of Euclid Insurance Agencies, Inc.

977 Oaklawn Avenue • Elmhurst Illinois 60126 • 312 833 1000

Indemnity Dilemma

Continued from page 23

defending and indemnifying them from any claims for bodily injury, death or property damage arising out of construction of the project, whether such claims are based on allegations of ordinary negligence, professional negligence, or violations of the Illinois Structural Work Act. This insurance coverage shall have a limit of \$_____ per claim with no deductible. All of the parties to the Project acknowledge that this insurance is probably not available on ordinary commercial markets and may be extremely difficult to obtain; however, Contractor shall not assert difficulty obtaining the insurance as an excuse for failure to obtain it. Architect hereby agrees that the sole remedy for Contractor's failure to obtain this insurance shall be to require Contractor to pay all damages incurred by Architect, the Architect's employees, agents and representatives arising out of such a claim because of the absence of the insurance: namely, all defense costs and attorney's fees, plus any indemnity or settlement payment. Architect is an intended third party beneficiary of this provision and shall be entitled to recover all costs and expenses, including attorney's fees, incurred in enforcing the terms of this provision.

ARCHITECTS - ENGINEERS

Announcing

ELECTROSTATIC PLOTTING SERVICES COLOR and BLACK AND WHITE

As an added service to the design professional, we have installed electrostatic CADD plotting equipment at our Wabash Avenue location.

- End plotting bottlenecks—high capacity
- Attractive pricing, quantity discounts
- 400 dots per inch
- Output to bond, vellum and mylar
- AutoCAD, VersaCAD, Intergraph, and most other CADD software

SAVE TIME—SAVE MONEY

Other Services... Since 1915 Complete Reprographic Services

- Pin-register Overlay Drafting Repro Specialists
- Specifications, Booklet, Report Xerox 9900® Duplicating
- Reproduced Tracings, Fixed Line, Washoff
- PMT® Stats
- 2080 Xerox® Copies
- Shacoh Copies
- Whiteprints • Sepias • Blueprints
- Offset Printing
- Electrostatic Plotting
- Huey Diazo Papers & Films
- Huey Tracing Papers & Films
- Huey Deluxe Drafting Tables

CALL FOR MORE INFORMATION

HUEY 

MAIN PLANT
19 S. WABASH

RIVER NORTH
435 N. LaSALLE

782-2226

644-2264

PROVIDING REPROGRAPHIC SERVICES TO CHICAGO ARCHITECTS AND ENGINEERS SINCE 1915

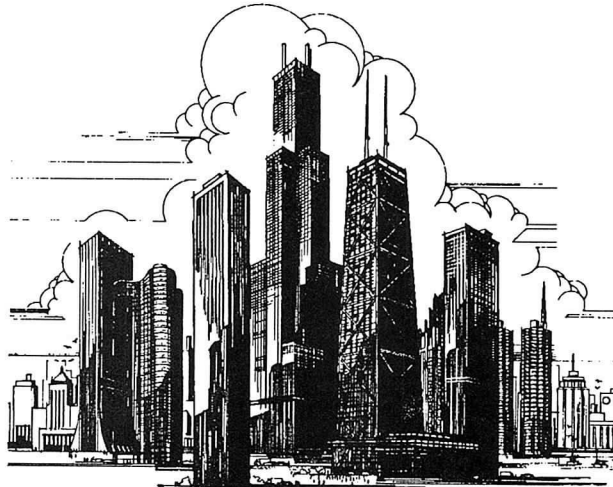
This clause comes with no guarantees - a court might hold it to be an unenforceable attempt to circumvent the Anti-Indemnity Act. But there is no other risk-shifting clause currently in use in Illinois that stands a greater chance of success.

Conclusion

The indemnity dilemma illustrates the state legislature's failure to understand the problems plaguing the design industry. The Anti-Indemnity Act makes sense for construction contractors, who have a duty to provide safe working conditions. But it should not apply to design professionals who neither have a duty to ensure safety on the jobsite nor can take advantage of no/low deductible insurance policies.

Mark C. Friedlander, a partner in the law firm of Neal Gerber Eisenberg & Lurie, specializes in construction law and litigation and defense of professional liability claims. He was an adjunct professor at the UIC School of Architecture, 1985-86, and a lecturer at IIT School of Civil Engineering, 1987-89, and at the Engineering School, University of Wisconsin.

Chicago's Finest CAD Services



- **400 PPI Electrostatic Plotting on Bond, Vellum, or Film**
 - Calcomp 906/907 or HPGL plotter emulation
 - Tone or Screen levels by pen number
- **Raster Scanning of A to E size drawings - .TIF, .RNL, .G3**
- **Vector file conversion to .DWG, .DXF, .DXB, .IGES**
- **Digitizing - Large format, 800 PPI accurate**
- **OCR Scanning of Text Documents to all popular file formats.**
- **Local Pick-up and Delivery Service or Modem Transfer**

Your Local Digi-Plot Service , Inc. Centers

Downtown Location

**228 S. Wabash Ave.
Suite 250
Chicago, Il. 60604**

Suburban Location

**4501 W. 135th St.
Suite 101
Crestwood, Il. 60445**

Digi-Plot Services, Inc. - 1-800-PRO-PLOT



September

6 ▼

Graham Foundation Exhibit Opening & Lecture

Bart Prince, *Recent Work*, including the completion of the Japanese Pavilion of the Los Angeles County Museum, designed by Bruce Goff. 4 W. Burton Place, 8 p.m.

7 ▼

Real Estate Committee Meeting

At the Offices of Skidmore, Owings, & Merrill, 33 W. Monroe, 4th Floor. 5:30 p.m. R.S.V.P. Chapter Office.

8 ▼

Exhibition Opening

Mexico's premier sculptor, Sebastian. Sculptures are executed in painted steel, the material of the 20th Century architecture and the urban environment. Nina Owen Ltd., 212 W. Superior St. 5-7:30 p.m.

9 ▼

Exhibition Closes

Quonset Huts on the River Styx. Archi-Center Gallery, 330 S. Dearborn.

10 ▼

WAL Membership Tea

North Lakeside Cultural Center, 2 - 4 p.m. Requests for invitations to Ruth Anderson, 331-4852.

12 ▼

CCAIA Executive Committee Meeting

8 a.m. Board Room.

Structural Work Act Discussion

Defending Against the Illinois Structural Work Act, Lawsuits. Featured Speaker Steven G. M. Stein, Attorney. Sponsored by the Structural Engineers Association of Illinois. Zincs Restaurant, 1st floor of Presidential Towers. Dinner 6 p.m. Lecture to follow. \$18. R.S.V.P. to SEAIOI office, 327-4198.

Concept Chicago Registration

Last chance to register at discount rates. Use convention brochure to register.

13 ▼

Graham Foundation Lecture

Santiago Calatrava, one of the foremost young structural engineers in Europe, discusses his work. Presented in cooperation with the S.O.M. Foundation. 4 W. Burton Place. 8 p.m.

15 ▼

Deadline For Entry

National Competition to design a candlestick. Co-sponsored by Audets & the Dawson Gallery. Information: Debra Audet or Beth King, 716/325-4880.

ICAIA Board Meeting

Plaza Club, 130 E. Randolph. 9 a.m.

U of I Architecture Forum

Minoru Takeyama, 1989-90 Plym Distinguished Professor in Architecture, and three past Plym professors, Gunnar Birkerts, Paul Rudolph and Joe Esherick, will discuss *Concept and Image: How Design Evolves*. University of Illinois at Urbana-Champaign, Temple Buell Architecture Gallery. 2 - 5 p.m. 217/333-1330.

17 ▼

Textile Exhibit Opening

Inspired by Architecture, invitational show featuring the tapestry work of Marla Gunderson, Laura Foster Nicholson, Nancy Shaw Cramer. Textile Arts Centre, 916 Diversey Parkway. 929-5655.

18 ▼

Northern Illinois University Course Begins

Design Management Studies. *Graduate Survey of Marketing*. Monday Evenings through November 27. NIU Art Gallery 5:30-9 p.m. Information: 815/753-1450

CCAIA Discussion Series

Sponsored by the Planning and Urban Development Committee. Program will focus on an *Overview of Chicago Planning*. The Cliff Dwellers Club, 220 S. Michigan Avenue, 6-8 p.m. \$13. Reservations to CCAIA.

20 ▼

Northern Illinois University Course Begins

Design Management Studies. *The Contexts Of Design*. Wednesday Evening through November 22. NIU Art Gallery, 212 W. Superior. 5:30-9 p.m. Information 815/753-1450.

21 ▼

CCAIA Gala Anniversary Lecture

Sponsored by and celebrating the Interior Architecture Committee. Ralph Caplan, critic and design consultant discusses, *What to Do Until the Designer Comes: Designers, Clients and the Commissioned Environment*. First Chicago Center, First National Plaza, 6:30 p.m. Tickets at door or Chapter Office \$15; \$10, Students.

22 ▼

Submission Deadline

Rhode Island affordable housing design competition. See July *Focus* and/or contact Jean Robinson, R.I. Housing and Mortgage Finance Corporation, 60 Eddy St., Providence, RI 02903.

23 ▼

Chicago By Design Tour

Swiss Grand Hotel, 323 E. Wacker Drive. 8:30 a.m. \$45 members. \$50 non-members. R.S.V.P. Chapter Office.

26 ▼
CCAIA Board Of Directors Meeting

Noon. Board Room.

October

2 ▼
1989 Energy Awards Competition Deadline

Sponsored by the American Society of Heating, Refrigerating and Air Conditioning Engineers. Questions: call Mark Hedberg, Tour & Anderson, 530-4401, or John Roach, Continental Bank, 828-3086.

5&6 ▼
Chapter Office Closed

We'll be at Concept Chicago '89.

More in October
Beginning October 19: The Changing Nature of the Office - 1st Continuing Education program.

ARCHITECTURAL INTERIORS

Entrepreneurial Interior Design Professional, with 10 yrs. experience, seeks association with Registered Architect or architectural office to establish & develop architectural interiors business. Reply in confidence to Interiors, 3557 N. Broadway, Chicago, IL 60657

SCENIC RIVER VIEWS FOR LEASE
3025 N. WESTERN AVE.

Beautifully renovated building features:
 3,000 sq. ft; divisible New central HVAC system Window wall on river Fenced paved parking included Close to Kennedy & Belmont/Clybourn/Western interchange
Present headquarters for Janows & Associates
Judith Fried, Wm. Kritt & Co.
486-4400

BOTTI STUDIO OF ARCHITECTURAL ARTS, INC.
919 GROVE STREET
EVANSTON, ILLINOIS 60201
(312) 869-5933

STAINED AND FACETED GLASS WINDOWS • MOSAIC • PROTECTIVE GLAZING • SCULPTURE • BEVELED GLASS • METAL • MARBLE • COMPLETE INSTALLATION • SANCTUARY FURNISHINGS • COMPLETE INTERIOR RENOVATION • SANDBLASTING • STAINED GLASS RESTORATION • PAINTING AND DECORATING • MURALS • WOOD • STAINED GLASS CONSULTANTS • METAL AND WOOD FRAME RESTORATION

FIELD REPRESENTATIVES:
New York N.Y., Cleveland Ohio, Atlanta Georgia, Sarasota Florida, Phoenix Arizona, San Diego, Los Angeles, San Francisco California, Seattle Washington

Call or Write for a Free Brochure

312/
787•
4014



KOZAN STUDIOS
TROMPE L'OEIL/FAUX FINISHES
CALL FOR BROCHURE

ARCHITECT/MANAGER

This position demands the utmost of skill in a number of diverse areas to provide our clients with the finest design in the integration of residential architectural and construction services. We are a growing organization, that requires the intense commitment and investment of its people, and compensates accordingly.

Please send resume and salary history to P.O. Box 1635, Highland Park, IL 60035

ARCHITECT/MANAGER

Are you a design professional that has more to offer than drawing lines? Are you an aggressive entrepreneur with a flair for design and talent for management? Do you like to get mud on your shoes? Are you looking for an organization that is on the move? We are looking for this unique blend of qualities to head up our residential design area.

Send reply to Traditional Concepts, Inc., 611 Rockland Rd., Suite 106, Lake Bluff, IL 60044

254/255

ProposalManager • 254/255™
for the Macintosh. Management and production of GSA forms 254/255.
• Includes FileGenerator • PM™:
Input data histories one time; never rekey them again.
• Prints onto blank paper
• Full documentation and support
• Designed by licensed architect
• WYSIWYG display (what-you-see-is-what-you-get) of all forms.
• GSA acceptable
• Requires PageMaker 3.0 and Post-SCRIPT laser printer.

\$279
WORDSCAPES
4546 B-10 El Camino Real #177
Los Altos, California 94022
415-968-8737

Macintosh

Florentine New Towns: Urban Design in the Middle Ages by David Friedman. *The Architectural History Foundation and the MIT Press, 1988, Cambridge, MA. 373 pages, 111 illustrations, hardcover, \$45.*

Reviewed by John B. Tittman

Here's a good book to read if you're interested in urban planning and in a process of design that creates meaningful architecture. Would that town planners and developers of today aspire to what their Florentine counterparts achieved in the Middle Ages! Not only were these towns efficient and effective both politically and economically, but, perhaps miraculously, they were works of art.

Professor Friedman shows that in the beginning of the fourteenth century, the emerging merchant class of Florence constructed satellite towns to solidify and preserve their growing power. These towns were intended to counter the established feudal order: populations of several villages were transplanted to each new town, and in the process, the residents' loyalties shifted from the nobility to the adopted mother city Florence. (Perhaps not without some complaining!) Within a few generations these rustics developed into citizens of Florence.

The book provides many detailed facts about the architecture of the towns. The town plans were conceived as single, finite entities. The area within the walls of the towns was understood as a field of composition, and the streets and buildings were laid out according to the rules of geometry. To remind the citizens of their ruler, symbols of Florence were incorporated in the architecture of the gates and squares.

The towns were usually sited on flat ground: the plans minutely proportioned, with perfectly central main squares, are orthogonal, exhibiting double symmetry by a principle axis crossed by minor axes. The facades of houses were carefully regulated since they were considered an ornament to the city and of public importance. In one of the towns, designed in 1350, the

townhouse lots were 10 braccia wide, or about 19 feet - a width still seen today.

Friedman points out that the study of the design of these Medieval new towns is the study of the development of a type, not the invention of a new order. Design was understood as an evolutionary process, not as independent invention.

The only down side to this book is that it is not a quick read. But then books of substance rarely are. It is, however, clearly argued and well illustrated with both photographs and clearly drawn plans of the new towns. In short, *Florentine New Towns* is worthy of your bookshelf.

John Tittman is an architect with Booth/Hansen & Associates.

SITE. *Foreword by James Wines, Interview by Herbert Muschamp. Rizzoli, 1989, New York. 256 pages, illustrated throughout, hardcover \$50, paperback \$35.*

Reviewed by Renee Sprogis-Marohn



Staying abreast of recent trends in architectural design is no easy task these days, and architectural monographs continue to be the best-selling solution to update an outdated library.

Rizzoli's most recent offering is on the buildings and projects of SITE, the witty and intriguing works of James Wines and Alison Sky. Beautifully

photographed and meticulously presented, the book documents the firm's projects since 1975, supplemented by a section displaying the conceptual and presentation sketches by James Wines.

Originally conceived as an artistic venture focusing on the "urban visual environment" in 1970, SITE has grown in the past decades to represent what the architectural profession calls "Narrative Architecture" and what the public sees as humorous and accessible projects. The history of SITE (Sculpture in the Environment) is briefly catalogued in the foreword by James Wines, and Herbert Muschamp's interview with Sky and Wines covers topics ranging from education to the role of the architect/artist in the profession. However, although the text is both interesting and informative with regards to the philosophies driving the firm and its inception, my inclination and recommendation to the reader would be to explore the projects first.

"Audience participation in our work is as much the final product as a frame to a painting." This is one of the underlying principles of SITE: to promote an instinctual reaction to a "potential source of symbolism." In order to adhere to this philosophy therefore, it seems only logical that one experience SITE's projects before becoming immersed in the sometimes abstract Jungian principles supporting the concept.

The book covers a wide range of projects, from the early, more literal buildings for Best Products, to the more recent Laurie Mallet House, Swatch and Willi Wear stores, all rendered in SITE's signature monochromatic palette of neutral greys and whites. However, consistent with SITE's artistic background and intent, it is the more sculptural projects that deliver the most powerful "visual message" on the broadest interactive scale. Consider, for example, *The Ghost Parking Lot* or *Highway '86*, two projects representative of the "mobilized experience" in the narrative sense, and yet tremendously successful with the general public. The projects, although not architecture in the traditional sense, best exemplify SITE's early and continuing commitment to the integration of art and architecture.

Renee Sprogis-Marohn is an architect at Skidmore, Owings & Merrill.

People

▼
Angelo L. Biondi, AIA, and Steven L. Munson, AIA, announce the formation of their new firm, **Associates Design Group, Inc.**, which is located at 1815 Spruce Ave., Highland Park 60035. The firm's phone number is 831-0911. The firm offers architectural and planning services, with major emphasis on single and multi-family residential and small scale commercial projects.

▼
The Amistad Group, Inc. has moved into a new suite, #1616, at 8 S. Michigan Ave. The telephone remains 346-6116.

▼
Thelander Nelson and Associates, Inc., Architects and Engineers, of Lincolnshire, has announced organizational changes. **Ratindra K. Das, AIA,** and **Steven J. Thelander, AIA,** are now associate architects with the firm. Thelander, who has been a member of the firm since 1975, and Das are responsible for the production of documents, project administration, and design. Das was formerly with Schmidt Garden and Erickson, and has been with Thelander Nelson since 1986.

▼
Kevin Campbell, AIA, has been nominated to serve as a regional liaison for the national AIA Minority Resources Committee. Campbell was nominated by the MRC in June. As a regional liaison Campbell will be responsible for organizing the chapter liaison network in our region, serving as the primary contact person between AIA national, state, and local components and minorities in the profession. Campbell will also provide input to the MRC on minority-related activities, issues, ideas, etc. in the region, making recommendations to national MRC on program opportunities.

▼
Michael Bordenaro, CCAIA Professional Affiliate member, whose membership really dates back to about 1981 when he was a Student Affiliate, was recently a speaker at the Central Illinois Chapter, AIA Chapter Meeting. ▶



ANOTHER ALL-NIGHTER?

Are you in need of top quality, prescreened design and production assistance? Call **ARCHITEMPS, INC.**—your source for temporary architectural, interior design and facility management personnel. In your office, our skilled professionals can provide a full range of services enabling you to:

- staff-up quickly as the need arises
- eliminate deadline panic
- reduce overhead due to cyclical hiring and layoff
- maintain the competitive edge crucial to the well-being of your business

For more information about **ARCHITEMPS**, call Charles Poskonka or Alice Rudolph at 312.649.0914.

ARCHITEMPS, INC.
206 West Division Street
Chicago, Illinois 60610.1821
312.649.0914

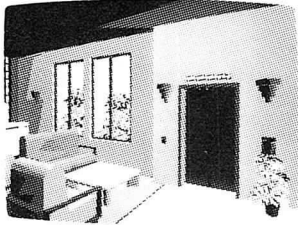
ARCHITEMPS, INC., a Chicago based corporation now serving the Midwest and Southwest.

© ARCHITEMPS, INC., 1988

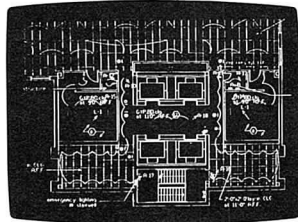
Why the most advanced CAD system for architects and building designers puts you on the edge.

ARRIS

And keeps you there.



Presentations Dramatic visualizations help you win new business and communicate design ideas.



Production Design automation, design refinement and 3-D capability increase your productivity.

Today, there is a revolutionary CAD system that puts you on the edge — the competitive edge. A CAD system that goes far beyond the ordinary, and gives you the edge in production, presentations, plus a lot more.

The name of this system is ARRIS™. And it is the remarkable system that will instantly show you why ordinary CAD is no longer enough for architecture and building design and management.

THE COMPETITIVE EDGE IN PRODUCTION.

With ARRIS, you don't have to make drawings line by line. Instead, you enter basic design parameters — and let the system do the rest of the work, *automatically*. So more work gets done, in less time.

THE COMPETITIVE EDGE IN PRESENTATIONS.

With ARRIS, you can create extraordinary design and marketing presentations that help you win more business. For example, ARRIS 3D modeling and rendering allows you and your clients to view your project from any perspective, at any angle, at any time of night or day. And to "walk through" rooms as if they really existed.

PLUS.

ARRIS allows your project teams to share data, drawings and systems — so they can work on entire projects, not just single drawings. Plus, ARRIS will grow as you grow, so you keep your competitive edge.

So be sure to call today for our *free* ARRIS demonstration. We're your ARRIS Power Dealer — and we can show you how ARRIS provides extraordinary CAD capabilities. And we can also provide you with the very best in training, service, and support. Call now to get the competitive edge.

ARRIS SALES & SUPPORT IS PROVIDED BY:

CADD MIDWEST CORP.

350 West Ontario, Suite 200
Chicago, IL 60610
988-9764

SERVICES.

- drafting
- digitizing
- plotting
- 3-D Modeling
- data base translating
- user training
- time sharing
- custom software
- system sales

EXPERIENCE.

In addition to prior design and project management experience, our staff of architecture, engineering and interiors professionals has worked with CADD for over 6 years per person on average. We provide CADD systems and services to design and engineering firms across the country. We know your business and production process.

SUPPORT.

CADD Midwest sells and supports a variety of CADD Systems. We prefer ARRIS, by Sigma Design because we find it to be friendly, fast, and intelligent. We stand behind ARRIS with confidence.

We invite your questions and inquiries.

Paul H. Lutton, AIA
President, CADD Midwest Corp.

Bordenaro, who is associate editor at Building Design & Construction spoke on "Guidelines for Gaining Press Coverage."

Jerry Quebe, FAIA, vice president of Perkins & Will, recently participated in a panel discussion, "Making the Right Health Care Design Decisions: A Collaborative Effort," sponsored by *Contract* magazine and the Merchandise Mart. The conference examined the changes occurring in the health care industry and their potential impact. Quebe, who with two other panelists addressed the collaborative efforts between the architect and client in developing quality standards for hospital interiors, has more than 24 years of experience in the design and management of health care projects.

A last winter's "happening," but just discovered by the *Focus*: John Nelson, AIA, was chairman of the Lyric Opera Guild Board's fifth annual "Fantasy of the Opera" Benefit. John was the creative leadership behind transforming the Opera House foyer into Windsor Great Park, complete with branches of Herme's Oak arched overhead.

Jerold Brim, AIA, and Mehran Faramandpour, AIA, have formed Brim/Faramandpour Architects, located at 666 W. Dundee Rd., Northbrook, 763-5767. The firm will concentrate on office buildings, shopping centers, retail stores, space planning, custom residential design, and land development. Brim was formerly a partner in Brim/Braun Associates, Ser-tex, Ltd., and Bernheim, Kahn & Brim. As well as an active history with the CCAIA, Brim is active in the Society of American Registered Architects. Faramandpour, who is also a member of SARA, has been affiliated with Otima, Inc.; Schipporeit, Inc.; Mann, Gin, Ebel & Frazier; and Bernheim, Kahn & Brim.

O'Donnell, Wicklund, Pigozzi and Peterson Architects, Inc. has named Larry Oppenheimer, AIA, as senior associate, and Jon Hammond, AIA, Carlo Salvador, Frank Gorski, AIA, Kathleen M. Orser, IBD, and Kathleen Jessen as associates. Oppenheimer, who is a member of the American Hospital Association, joined the firm in 1987, and is involved with master planning, additions and renovations of medical, research, and office projects. Gorski, associate and director

of production, has been with OWP&P since 1988. He is responsible for quality control, assignments, staffing, and overall supervision of technical, administrative, budget, and schedule objectives. Gorski is a member of the National Fire Protection Association.

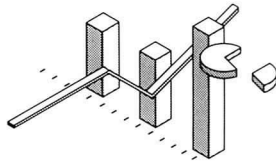
▼ **Foliage Design Systems of Chicago**, who has for three years beautified (gratis) the Chicago Chapter AIA offices, has been recognized by *Interiorscape* magazine as one of the Best Project winners in the magazine's 1989 Best Projects Awards. FDS of Chicago, headed up by **Kenneth Galt, president**, was a winner in this year's awards program for their interiorscape of Oakbrook Terrace Corporate Center in Oakbrook Terrace. THANK YOU to Ken Galt and FDS for bringing a breath of fresh air to our Chapter office.

▼ **Sherwin Braun, AIA**, has been elected a board member of Friends of Steinmetz Academy.

▼ **Jocelyn Lum Frederick, AIA**, project manager for Perkins & Will's healthcare practice, served as a juror for the Exhibition of Architecture for Health, sponsored by the American Hospital Association. Entries were displayed at the 88th Annual Convention and Exhibition of the AHA in early August. Frederick has lectured on healthcare facility planning and design at both the Foundation for Long-Term Healthcare Conference, sponsored by the Illinois CPA Society, and at Rosary College in River Forest.

▼ Associate member **Roberta Feldman, Ph.D.**, is editor of *Journal of Architectural and Planning Research*, an interdisciplinary journal for professionals and scholars in architecture, design, and urban planning. *JAPR* has recently been awarded the 1989 First Place Successful Magazine Award for Scholarly and Scientific publications. Subscription information is available from the publisher, Locke Science Publishing Co., P.O. Box 146413, Chicago, IL 60614.

▼ The firm of **J. W. Sih and Associates, Inc.** has had their design for the Third District Circuit Court Building selected to be included in the 1989 Exhibition of Architecture for Justice, sponsored by the AIA and the American Correctional Association. The exhibit was displayed in August at The American Correctional Association Congress in Baltimore, and will be ►



**FILM
COMPUTER IMAGING
DIVISION
INC**
676 N. LA SALLE ST.
CHICAGO, IL 60610

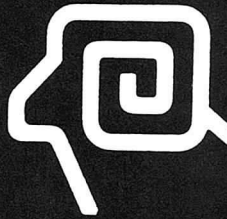
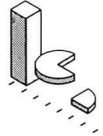
35 mm Color Slides Imaged From...

AutoCAD®

Call for More Information and a Free Sample.

312-642-3362 FAX • 312-642-9227

- Computer Imaging (4K)
- Ektachrome® (E-6) Processing
- Duplicate Transparencies
- Delivery
- Modem Access



**RAMM
BRICK, INC.**

INDUSTRIAL
INSTITUTIONAL

RESIDENTIAL
PAVING

COMMERCIAL
MUNICIPAL

FOR EXCELLENCE IN BRICK • SINCE 1914

312/352-5500 223 Tilden Ave., P. O. Box 9, LaGrange, IL 60525

**What we can do
will amaze you**

At Foliage Design Systems, we know that plants are an essential part of any setting where people live, work or play.

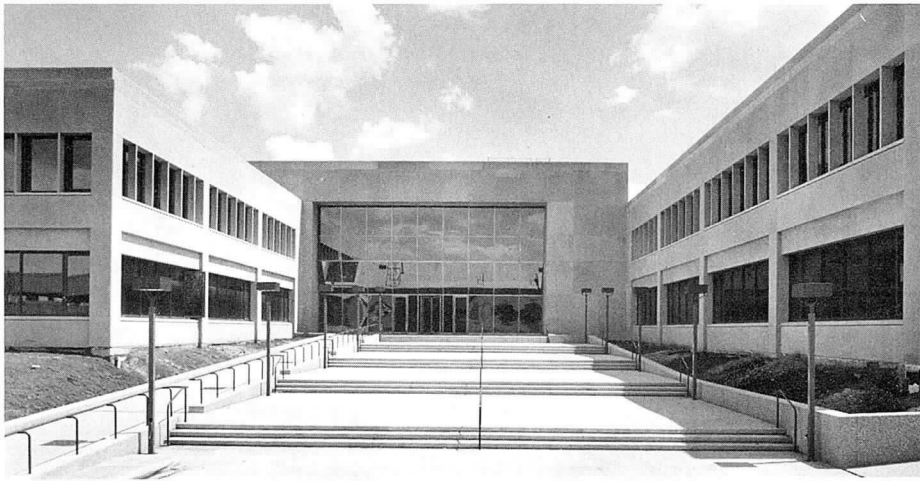
□ We provide colorful flowering plants that include a guaranteed regular replacement service.



312-620-4808

Foliage Design Systems
Nature indoors... Nature outside.

Member Florida Nurseryman and Growers Association / Associated Landscape Contractors of America



Entrance court, Third District Circuit Court Building, J. W. Sih and Associates, Inc. To be completed late this year.

in St. Louis, October 10-13 at the Committee on Architecture for Justice Annual Conference. Sih's suburban judicial facility in Rolling Meadows is comprised of 333,350 sq. ft., with 21 courtrooms and offices of county agencies. The building is a "plan repeat adapt" of a similar project completed earlier for the same owner. The decision to repeat was determined by the owner after a survey of judiciary and staff found that the original project was the most functional and efficient in their entire decentralized court system.

▼
Don Hackl, FAIA, has been elected a vice president for 1989-90 of the Chicago Building Congress, an area-wide association of real estate and construction interests. **Bill Brubaker, FAIA**, has been elected to a three-year term. Incumbent directors of the CBC are **Harry Anderson, FAIA**, and **Eugene Cook, FAIA**. President of the Congress is Thomas Gibson, of the Gibson Electric Co.

▼
Michael Damore, AIA, and **Kimbal Goluska**, Professional Affiliate, have been elected to become partners at Skidmore, Owings & Merrill, Chicago office, effective October 1. Goluska, who joined the firm in 1977 and has directed the Planning, Landscape and Urban Design studio since 1980 will continue these responsibilities as design partner in charge of planning, landscape, and urban design. Goluska, Professional Affiliate Director to the CCAIA Board, was recognized in 1982 by the Chicago Junior Association of Commerce and Industry with the "Outstanding Young Citizen Award." Damore was a senior designer in the Houston office from 1976-1988. As a managing partner in the firm he will be responsible for the administrative and business aspects of projects in his charge.

▼
Thomas Meredith, AIA, has joined Carow-Architects-Planners as a senior associate and director of marketing. Meredith's responsibilities will include project management for the new Marvin Moss Center at Roosevelt University's Auditorium Building. Before joining Carow, a mid-size architectural and interior design firm specializing in public and corporate facilities, Meredith was a vice president and project manager for Harry Weese & Associates.

▼
Norman DeHaan, AIA, FASID, was elected vice president/president-elect of the International Federation of Interior Architects/Designers at their recent World Congress in Bergen, Norway. IFI represents the interior design organizations in 24 countries, and is headquartered in Amsterdam.

▼
William Schuster, AIA, director of marketing for Hansen Lind Meyer, has been elected an associate principal with the national architectural-engineering-planning firm. The announcement was made in conjunction with HLM's election of 29 new associates. Schuster, who had been director of marketing for HLM's Iowa City office several years ago, rejoined the firm last fall. **Jack Lesniak, AIA**, director of Construction Administration, has been elevated to senior associate. Project architect John Becker, electrical engineer Lee Barrett, and business manager Dick Lippert were named new HLM associates.

▼
Roula Alakiotou, AIA; Roberta Feldman, Associate member; **Carol Phelan**, Associate member; and **Susan Schneider-Criezis, AIA**, formed a

panel to discuss current issues pertinent to the profession for a recent chapter meeting of the Northeast Illinois Chapter.

▼
Warren Hendrickson, AIA, has joined Lester B. Knight & Associates, Inc. as vice president for Architectural Design. He will lead and expand the firm's architectural practice. Knight is currently designing the 750,000 sq. ft. Advanced Photon Source Physics Lab for Argonne National Laboratories. Prior to joining Knight he was a partner in the firm of Hansen Lind Meyer, Inc.

▼
Perkins & Will has announced that the new corporate director of Public relations is Mary Sue Kranstover. Kranstover is responsible for both development and implementation of public relations programs for the firm's offices in Chicago, New York, and Washington, D.C.

▼
Associate member **Howard Birnberg** is serving as general editor on a new book that documents changes of recent years to the design industry, and serves as a guidepost for the 90s. Twenty authors will contribute to *New Directions in Architectural and Engineering Practice*. Chapters will include discussions on the computerized design office, non-computer production systems and tools, project programming, marketing budgets, profit planning, and finding, training, and keeping staff, and more. For more information, call 664-2300.

▼
The **Society of Architectural Historians** has presented its annual Alice Davis Hitchcock Book Award to Northwestern University's Professor of Art History David Van Zanten for Van Zanten's *Designing Paris: the Architecture of Duban, Labrousse, Duc and Vaudoyer*. Van Zanten, a Northwestern faculty member since 1979, has written articles on Louis Sullivan, on Chicago and Paris architecture, and has published two other books on architecture.

▼
Noted architect **Helmuth Bartsch** died in June at the age of 87. Before his retirement in 1966, Mr. Bartsch was a partner in the firm of Holabird & Root. He joined Holabird & Roche from Germany. Some of the building designs in which he was involved are the Palmolive Building, Saks Fifth Avenue, and several buildings for the 1933-34 Century of Progress world's fair. Other projects for which he was respon- ▶

Hundreds of
ARCHITECTS, ENGINEERS & DESIGNERS

Rely on

NEAR NORTH REPRODUCTIONS INC.

FASTEST BLUEPRINTING
IN CHICAGO
944-4234

Fastest growing blueprint company in the world

Over 10,000 blueprints daily

"Fastest blueprinting company in town."

Bob Wallace WBBM-TV Two on Two

The Near North Reproduction Building
206 West Division
(Near Wells and Division)

Free
Parking

Pickup &
Delivery

Superior
Facilities

sible are the First National Bank of Minneapolis and two federal office buildings in Washington, D.C.

Seminars

▼
"Defending Against the Illinois Structural Work Act. Lawsuits!" is the subject of a program presented by Steven G. M. Stein, attorney with Greenberger, Krauss & Jacobs. It is sponsored by the Structural Engineers Association of Illinois (SEAOI) and will be held on September 12 at Zincs Restaurant, 1st floor of Presidential Towers (southwest corner of Clinton & Madison). This program will show you how to protect or at least limit your exposure to a SWA lawsuit. The 80-year-old Scaffolding Act is the prime vehicle by which architects and engineers are involved in lawsuits resulting from construction site accidents. While other states have enacted legislation to curtail frivolous lawsuits, in Illinois with its SWA, the liability crises for design professionals continues unabated. SEAOI dinner programs are open to the public. The cost for this program is \$18 for non-SEAOI members. The dinner is at 6 p.m., a cash bar precedes, and the lecture follows dinner. Please call 372-4198 for reservations. Questions about the program should be directed to Nancy Gavlin, 644-2295.

▼
Midwest Asbestos Information Center (MAIC) is offering a four-day advanced asbestos training course, "Project Designer Plus," developed by a team from the University of Illinois at Chicago School of Public Health, and focusing on the development of drawings and specifications and the supervision of those carrying out the activities of an asbestos abatement design. The course has been scheduled for September 25-28 and October 3-6. It is recommended that participants have previous knowledge and experience in dealing with asbestos issues. MAIC, a joint program between the UIC's School of Public Health and the Chicago Lung Association, is one of five major EPA-sponsored asbestos training centers in the U.S. For more information, call MAIC at 829-1277.

▼
The Northern Illinois University School of Art, through the College of Continuing Education, will offer two courses with emphasis in **Management Theory and Practice for designers**. The courses, held at the NIU Art Gallery at 212 W. Superior in Chicago, begin the week of September 18 and run

through the week of November 27. "The Contexts of Design", exploring the scope of professional design practice and how design is used by business to make a significant contribution to business performance, will be offered on Wednesday evenings; "Graduate Survey of Marketing," a comprehensive survey analysis of marketing functions, institutions, policies, and problems related to design, meets on Monday evenings. The course fee is \$500. Enrollment may be for professional development or for graduate credit from NIU. Both classes will meet from 5:30 - 9 p.m. For more information, call 815/753-1450.

▼
The Chicago Committee on High Rise Buildings will hold its 1989 fall symposium, "Exterior Claddings of High Rise Buildings," on November 13 and 14 at the Drake Hotel. Eighteen subject areas will be offered. A luncheon session with a featured speaker will be offered each day, plus a welcoming reception on Sunday evening, and an informal cocktail hour on Monday evening. All of the papers presented will be published and distributed to the attendees. For additional information, contact Ian Chin, 372-0555 or Jerry Reich, 245-1414.

▼
The Masonry Society, in conjunction with the Construction Research Center at the University of Texas at Arlington, is presenting an **"International Seminar on Evaluating, Strengthening, and Retrofitting Masonry Buildings,"** a forum for the presentation of materials from Yugoslavia, Czechoslovakia, Italy, and the U.S. The seminar is scheduled in Chicago October 16. To receive a seminar brochure, contact Construction Research Center, University of Texas at Arlington, Box 19347, Arlington, TX 76019, 817/273-3701.

Competitions

▼
Entries for the **River North Architectural Awards Competition**, recognizing projects that reinforce the quality of the area and contribute to the spirit and dynamism of the River North community, are due Friday, October 6. Awards will be presented in New Construction, Interior Design (Showrooms/Retail); Interior Design (Business/Residential); Renovation; Urban Design. Projects must have been completed after August 1988 and must be located within the boundaries of Chicago River on the south and west, Institute Place on the north, and State

Street on the east. For an entry form, contact Elizabeth Beckman, 440-1584.

▼
This year's **Energy Awards Competition**, sponsored by ASHRAE, has an entry form designed to make entering the competition easier and less time consuming. The deadline for entries is Monday, October 2, so call Mark Hegberg at 530-4401, or John Roach, 828-3086, to get that important form.

Exhibits

▼
"Inspired by Architecture," an invitational show featuring the tapestry work of Marla Gunderson, Laura Foster Nicholson, and Nancy Shaw Cramer, will run September 17 through October 27 at the Textile Arts Center, 916 Diversey Parkway, Chicago.

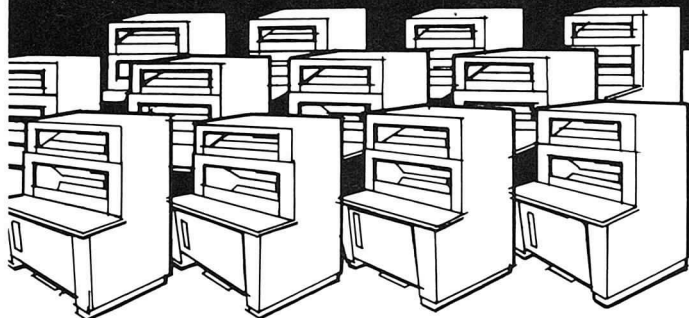
▼
Continuing through September 17 at the Art Institute in Galleries 9 and 10, **"French Avant-Garde Architecture 1989,"** which showcases the recent work of more than ten young to mid-career French architects practicing in France.

Etcetera

▼
Home Plan Ideas, a Meredith publication is looking for home plans for 1990 and 1991 issues. Through an agreement with each architect, the plans are redrawn to *Better Homes & Gardens* standards and marketed on a non-exclusive basis through the magazine. Architects receive a 30% commission on each plan sold, and are still free to sell the plan on their own in any way they choose. Submit photos or slides and a drawing of the basic floor plan to Jeff Abugel, Editor, *Better Homes & Gardens, Home Plan Ideas*, Locust at 17th, Des Moines, Iowa 50336.

▼
The School of Architecture, University of Illinois at Urbana-Champaign, announces that the **1989-90 Plym Distinguished Professor in Architecture** will be **Minoru Takeyama** of Japan. A convocation of the Plym Professors and the Plym Fellows will be held September 14 and 15; as a part of the convocation there will be a public forum at the School from 2 - 5 p.m., September 15, in the Temple Buell Architecture Gallery. An invitation has been extended to all Chicago Chapter members. Joe Esherick, Paul Rudolph, and Gunnar Birkerts will join Takeyama to address "Concept and Image: How Design Evolves." Professor A. Richard Williams, FAIA, will moderate.

**When you need 1
or 1,000,000 blue
prints, or any other
quantity...**



**MOSSNER'S 15 State-of-the-Art
Blue Print-White Print Machines
at One Location Produce Them
Fast, Fast, Fast**

**NO JOB TOO LARGE
NO JOB TOO SMALL**

**BLUE LINE, BLACK LINE,
BLUE PRINTS AND
SEPIA REPRODUCIBLES**

Speed, quality and dependability... these characterize Mossner's "blue print" service since 1922.

For more than 60 years, Mossner has provided the latest and fastest state-of-the-art, high-production equipment.

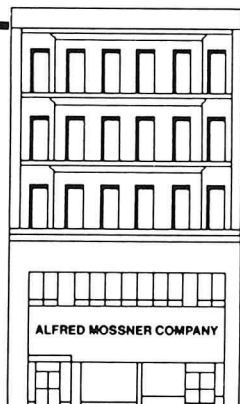
More than 50 messengers plus radio-dispatched pick-up and delivery vehicles assure the fastest possible service, including dependable print distribution to consultants, contractors and clients.

And that goes for *any* quantity you may require.

Mossner 372-8600

THE REPRODUCTION PEOPLE • LARGEST IN THE MIDWEST

Mossner Building • 137 North Wabash at Randolph (across from Marshall Field's), Chicago, IL 60602



Fast one-source service for all of your reproduction requirements

PHOTOMECHANICAL SERVICES

- STAR-REPRO[®] Drafting Systems—for pin-bar, overlay and team drafting
- Precision camera work up to 48 in. by 72 in.; enlargements and reduction to 10 times.
- Autopositives
- Scissor drafting
- Photo drafting
- PencilTone[®] reproductions
- Xerox 600 enlargements from 35mm microfilm
- Xerox 2080 and 1860 translucent vellum or Mylar intermediates, and paper prints - reduced or enlarged

OFFSET PRINTING

- Specification sheets and booklets
- MAGI-COPY[®] fast printing service—ideal for architectural and engineering specifications

**105mm and 35mm MICROFILM SERVICE
DRAFTING SUPPLIES AND FURNITURE**

**BLUE PRINTS,
WHITE PRINTS,
SEPIA INTERMEDIATES
ON PAPER OR MYLAR**

WE DO IT ALL UNDER ONE ROOF

Board of Directors

PRESIDENT
 Steven F. Weiss, AIA

FIRST VICE PRESIDENT
 Sherwin Braun, AIA

VICE PRESIDENTS
 Werner Sabo, AIA
 John Syvertsen, AIA
 John Tomassi, AIA

SECRETARY
 Leonard A. Peterson, AIA

TREASURER
 Thomas R. Samuels, AIA

DIRECTORS - Through May 1990
 Harry Hunderman, AIA
 Anders Nereim, AIA

DIRECTORS - Through May 1991
 John H. Nelson, AIA
 Tom Rossiter, AIA

DIRECTORS - Through 1992
 Yves Jeanty, AIA
 Linda Searl, AIA

PAST PRESIDENT
 Frank E. Heitzman, AIA

CCAIA FOUNDATION PRESIDENT
 John Tomassi, AIA

ASSOCIATE DIRECTORS
 Susan Dee
 Paul Bodine

PROFESSIONAL AFFILIATE DIRECTOR
 Kim Goluska

ILLINOIS COUNCIL DELEGATES
 Jeffrey Conroy, FAIA (Through 12/90)
 Robert Clough, AIA (Through 12/90)
 Kristine Fallon, AIA (Through 12/89)
 Lee Weintraub, AIA (Through 12/89)
 Robert Robicsek, AIA (Through 12/89)

ILLINOIS COUNCIL ALTERNATES
 Michael Youngman, AIA
 Jim Zahn, AIA
 Gigi McCabe-Miele

STUDENT AFFILIATE
 Morgan Fleming, IIT

Chicago Chapter Staff

EXECUTIVE DIRECTOR
 Jane Lucas

FOCUS EDITOR/ADVERTISING SALES
 Annette Kolasinski

PROGRAM DIRECTOR
 Mary Beth Carroll

BUSINESS MANAGER/MEMBERSHIP DEVELOPMENT
 Beverly Meland

MEMBERSHIP SERVICES DATA PROCESSING COORDINATOR
 Cynthia Gordon

PUBLIC INFORMATION
 Joyce deVries

DOCUMENTS SALES
 Jessica Lucas
 Joyce deVries

A M E R I C A N I N S T I T U T E O F A R C H I T E C T S

53 West Jackson
 Suite 350
 Chicago, Illinois 60604
 312.663.4111

Second Class
Postage Paid
 at Chicago, IL
