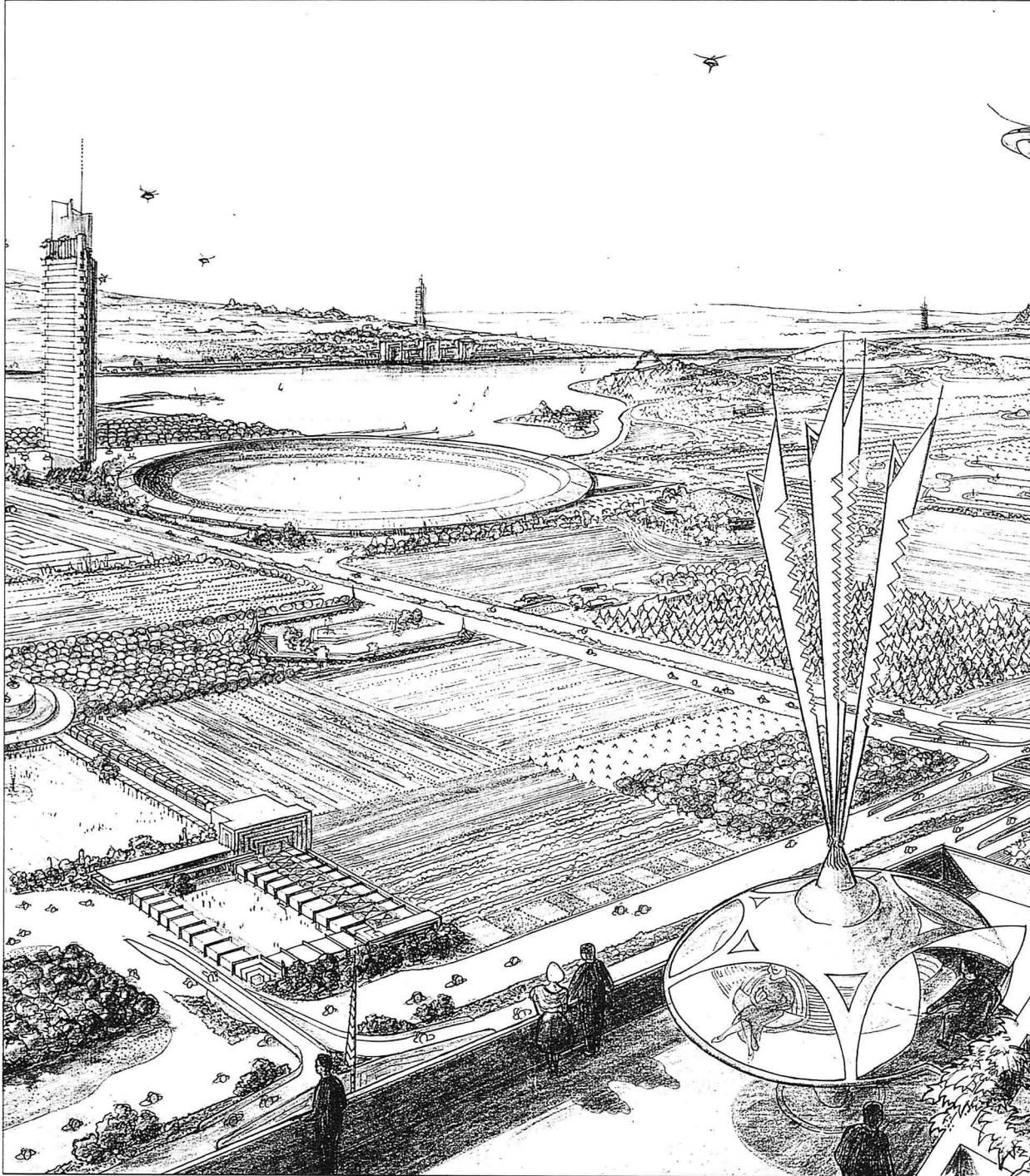


CHICAGO CHAPTER AMERICAN INSTITUTE OF ARCHITECTS FEBRUARY | 1989



CCAI A FOCUS

The CCAIA FOCUS (ISSN 0899-871X) is published monthly except for a combined July/August issue by the Chicago Chapter, AIA, 53 W. Jackson Boulevard, Suite 350, Chicago, Illinois 60604. Second class postage paid at Chicago, Illinois

POSTMASTER:

Send address changes to CCAIA FOCUS Chicago Chapter, AIA, 53 W. Jackson Boulevard, Suite 350, Chicago, Illinois 60604.

Editorial Committee:

John Eifler, AIA
Frank Heitzman, AIA
Cynthia Weese, AIA
Jane Lucas, Executive Director
Editor:
Annette Kolasinski

SPEAKING OF

The New Firm

While most of you were enjoying your holidays last month, I was busy scheming in my spare and not-so-spare time with two other CCAIA members in an attempt to get our new firm off the ground. There were a multitude of problems that I think everyone who goes through this process has to face, but which perhaps should be described so that others following our footsteps may benefit from our mistakes.

Although this was my third foray at creating a new firm, I did not seem to learn from my past experience. Somehow each situation brings its own challenges. It is certainly not the kind of activity that you want to get involved with when you are facing multiple deadlines on projects or the end of the semester, as we were. But now that we are over the hump, so to speak, we can look back and muse over how flat that hump was compared to how we imagined it.

I must recommend that if you are going to do such an adventurous thing as start a new practice, you find the most amiable people to do it with, as there will be plenty of opportunity for miscommunication and misunderstandings of intentions. My two partners, Susan Rakstang and Durwin Ursery, deserve a tremendous amount of credit for keeping up my spirits and their own with their good humor, through our many difficult discussions.

According to our CCAIA records, about 150 new AIA firms were formed in Chicago within the last two years. Our new firm will actually be reducing the number of firms in the CCAIA by two, since each of the partners had already established his own firm about four years ago.

In looking back at my past experience, I feel that one of the most important considerations in choosing who you enter an equal business relationship with is finding partners with similar financial needs to yours. If there is some skew in this need, there will be an

imbalance of "perception" about how important financial success is, whether or not it becomes a reality. For instance, if your would-be partner is independently wealthy and you are not, he would not be likely to become concerned if a client is a little late in paying. He may be more inclined to relax in the marketing of your firm than you.

So point number one is that you all have to be equally hungry. A corollary to that rule is that you all also have to be equally financially secure to be able to take some inevitable blows. In helping to prepare myself for this ex-

Chapter President Frank Heitzman shares tips on setting up a new firm

perience, I read a very well-written, inspirational book by Paul Hawken, published last year, called *Growing a Business*. Hawken recommends that you start out in a new business with little money, because if you have too much you will not have the proper incentive to become efficient or earn more. That was advice we could accommodate very easily.

Hawken also recommends that you do not surround yourself with consultants. I must admit we did. We had a lawyer, an accountant, and a business consultant in tow (fortunately not all in the same room at once). They all had something unique to offer, and we benefited from their different perspectives. Their advice does not come cheap, however, and should be budgeted for seriously.

Architecture is one of the few remaining professions that can still be practiced solo and with relatively little investment of capital. One could legitimately ask why anyone in his right mind would go through a tedious and time-consuming effort to produce a three-headed practice when one head served so well for each of us so long. In-

COVER: Frank Lloyd Wright's Broadacre City Project. On Monday, February 13, 6:00 p.m., at the ArchiCenter, the Design Committee will sponsor panelists discussing the planning generators of Chicago and the Midwest.

deed, the majority of AIA firms (63%) are sole practitioners. I think the answer in our case was to pool our resources and expand our possibilities. We are committed to the concept that architecture is a social art, more dependent on good interactions of individuals than on independent actions. Having a respected peer work toward the same goal as you is not only more rewarding psychologically, it is also more effective.

The actual logistical process of forming an Illinois Corporation, which we did, is simple. You choose a name that nobody else has laid claim to and register it with the state. There are kits available to assist you in doing this. The minds with your partners concerning what kind of firm you want this new entity to be, that is, to establish goals. In most other businesses outside of architecture, those goals usually begin with income. For instance, Hawken in his book describes a typical list of business goals (for non-architects) as follows, in descending order of importance:

1. Make money
2. Give money away
3. Be creative
4. Have pride
5. Have no hassles
6. Have fun

Obviously, income is very important in the future growth and stability of any firm, but we and other architectural firms probably would turn that list upside down in order of importance:

1. Be involved in interesting projects (= Have fun)
2. Choose good people to work with and for (= Have no hassles)
3. Do the highest quality architecture, which will be admired by our peers and the public alike (=Have pride)
4. Be creative (=Be creative)
5. Establish a reputation of wanting to give more than receive, and do not be overly concerned with the bottom line, (=Give money away)
6. Make money (=Make money)

Even more specifically, we spent much time discussing what kinds of projects we wanted to pursue. Although we all had our specialties, we finally agreed that we would take anything that remotely resembled architectural services, which gave us a very wide latitude for marketing.

The fine art of selecting a partner should have some rule about making sure that your prospective partner has a different expertise and potential clientele than you. Otherwise, you are not enhancing your marketability. Our hope is that we will never get "pegged" in the market but be always open to

If you are going to do such an adventurous thing as start a new practice:

All partners should be equally hungry and financially secure;

**Communicate!
Do not take anything for granted or think anything is too small to discuss**

new opportunities as they occur. This diversity will be especially important during the coming and long-predicted slowdown of construction activity.

There were several issues that needed to be hashed out over a period of months, since we could not come up with pat answers. One revolved around transfer of our former firms' equipment and assets to the new firm and how that would get evaluated and compensated, since we were not all equal in this respect. We ultimately decided to sell our assets to the new company, valuing them at a depreciated amount of their original cost, and receiving payment over five years.

Another difficult decision was selecting a name for the company. The vast majority of firms are named after their owners, which makes sense since it is a personal service that is being offered. We came to the slow conclusion, however, that if we followed this tradition, it would be difficult, for example, to spell and remember, and a no-name name would allow us to add new partners in the future.

Finally, at the good advice of our business consultant, we made some lists. We first made a long list of all the tasks that needed to be done in our offices and divided up the primary responsibilities for doing them. We understood that everything will be and is being done by all partners, but this process created a methodology for assuring that all bases are covered and nothing is left to flounder.

We also made a list of expenses that we knew had to be paid every month so that we could agree on the importance and completeness of each item. I have always had a somewhat free hand with my own business expenditures, over

which my conservative partners will now have some restraint - to my wife's delight. That is the one issue with which I will have difficulty adjusting.

In addition to adopting the standard Corporate Bylaws, we did take the somewhat unnecessary step of preparing a written agreement, which spells out all of our responsibilities and rights within the firm. This provided us with a stimulation for discussion, which I am sure led to a better understanding of each others' expectations.

Point number two is Communicate! Do not take anything for granted or think anything is too small to discuss. I have a funny story about a clock, which I could share sometime to illustrate the pitfalls of not communicating effectively with your partners.

There do not seem to be any good guides on creation of architectural firms beyond information on legal issues. It appears, however, that the necessity for putting together group practices in architecture will increase in the future, given the nature of our profession and the fact that the capitalization requirements are higher due to CADD technology. The recently published AIA Handbook section on "The Firm" has several chapters filled with excellent background information and the pros and cons of the choices available for the various business arrangements. Also, *The Architect's Handbook*, a book by David Ballast published in 1984, is a good source for firm-planning strategies. Based on my own recent experience, I have prepared the following firm-creation checklist, which you may find useful:

1. Make the decision to form a group practice. Choose a partnership or corporation form of business with advice of your accountant and attorney. Either, apparently, can work well.
2. Choose your partner(s) carefully, considering similar financial ability and needs but differing experience backgrounds. Make all partners equal.
3. Without getting too detailed, decide on broad business goals for the firm, such as, type of work, type of client, how much work, how big you want to be, and how much profit is desired.
4. Choose a name for the firm.
5. Choose a location for the business. Decide who will have primary responsibility for the design of the office, including selection of paint. If done early enough, this can be your first test of compatibility.
6. Make a list of projects that will start off the firm, including potential

fees. Transfer all existing projects (if contractually possible) to the new firm.

7. Make a list of assets you will contribute, value them by some acceptable method, and agree to sell them at that value to the new firm. Do not create hoards of personal equipment.

8. Make a comprehensive list of tasks and divide up, by agreement, primary responsibility for each task.

9. Make a list of expenses you all agree to pay, including rent, utilities, salaries, business consultants, dues, health insurance, key-man insurance, general liability insurance, office insurance, taxes, worker's compensation, social security, professional liability insurance, equipment, equipment maintenance, photography, automobile and other perks.

10. Create a formal written agreement that provides a simple and clear way of terminating the company or allowing an owner to leave.

11. Prepare a firm portfolio or brochure that will be used by all partners in pursuing work. This includes the inevitable and costly expense of designing your logotype.

12. Begin pursuing new work together.

13. Begin working on jobs together.

14. Agree to participate in a peer review within a year so that you can get an outside opinion of how you are doing.

All this will take two to three months of discussions and a lot of soul-searching, but it is extremely rewarding professionally and, hopefully, financially. If you have gone through a similar experience and want to add to the checklist, please let us know. We will publish your comments if you think it is appropriate.



THE CHAPTER CIRCUIT

PROGRAMS AND EVENTS

Interior Design Licensing Informational Forum

*Wednesday, February 15
6:00 p.m.*

Merchandise Mart Conference Center

Sponsored by the CCAIA Interior Design Licensing Task Force

Interior design licensing has become an important issue within the design community in the past four years. Interior designers and their professional associations, including IBD and ASID, have made this topic their top legislative issue.

In New York, Florida, District of Columbia, and Iowa, to name a few states, the issue of licensing for interior designers has been a hotly contested issue at the state legislative level. Proposals vary from state to state, but their intent is to restrict those who can practice interior design and use the title "interior designer" to those who are licensed. Architects may not necessarily be exempt from such legislation: architects now providing interior design services may be prohibited from doing so in the future unless they meet stipulations of proposed legislative changes.

The CCAIA has been monitoring national, state, and local developments on this subject. In July, 1988, the CCAIA Interior Design Licensing Task Force was formed to assist the Chapter with researching this subject, monitoring new developments, and formulating Chicago Chapter policy on this issue. The task force is comprised of six CCAIA members with varied professional and practice backgrounds. Several task force members have been involved with the interior design licensing issue for several years on a national level as well as being involved with the State of Illinois Architectural Practice Act rewrite and Sunset renewal.

The task force has been meeting regularly and gathering information, following closely developments at the state

and national levels within the past six months. Very recently there have been two major developments: a local group of interior designers, called the Illinois Interior Design Coalition, comprised of members of IBD, ASID, and Chicago Interior Design Organization, has proposed changes to the language of the Illinois Architectural Act and stated its intention to pursue licensing of interior designers in the State of Illinois; the National AIA Board of Directors is considering making major changes to its policy regarding interior design licensing and practice act regulation.

National AIA President Benjamin Brewer, Jr., FAIA, and members of the Institute's Board of Directors have been in communication with national representatives of ASID and IBD on the topic of title registration. The result of these collaborative efforts was a joint statement issued December 8, 1988, outlining the basis of the discussion and listing several principles that must be resolved by the parties involved to pave the way for interior design title protection. This latest development is a departure from previous National AIA policy, which stood in opposition to licensing or title protection for any discipline outside of architecture and engineering.

The prospect of licensing or title protection for interior designers is an emotional issue to architects and interior designers, with strident arguments often made by both sides. There have been accusations of trade restriction and "turf protectionism." Valid issues have also been raised regarding grandfathering of unqualified practitioners; lack of uniformity in educational requirements and professional internships; dilution of responsibility for public health, safety, and welfare; and the definition of interior design services and practice. Now Illinois architects are being confronted with this issue, requiring our profession to take unified action to develop policy based on well-researched information.

With this in mind, the CCAIA Interior Design Task Force has planned an Informational Forum on the topic of interior design licensing. It will be

held at the Merchandise Mart Conference Center on February 15, from 6:00 to 7:30 p.m. This program will feature several prominent speakers with in-depth knowledge of this important issue. Professor Walter Lewis, AIA, an Illinois Regional Director and national AIA Board member has been closely involved with this issue at the national and state level. He will speak on the past history of interior design licensing efforts, proposals, and policy, as well as new policy developments at the national AIA Board level. Hal Taylor, chief enforcement attorney with the State of Illinois Department of Professional Registration, will speak on the potential legal implications for architects coming from a future registration/title act for interior designers and the potential enforcement problems of such an act. Shirley Norvell, Illinois Council executive vice president, will address the potential legislative intricacies of proposed alterations of the Illinois Architectural Act, the review and approval process, and national and state level lobbying efforts performed on behalf of architects regarding this issue. We will also hear from Roland Lieber, managing principal at Swanke, Hayden & Connell, who will discuss the interior design community's views on licensing for interior designers and title protection. At the end of the presentation, we will allow for a question and answer period.

The objective of this Informational Forum is to educate the architect on current developments of this critical issue. Given the potential impact the enactment of this type of legislation would have on our every day practice of architecture, few of us can afford to miss this opportunity to become better informed on this topic.

We look forward to having you participate in this discussion on Wednesday, February 15, 6:00 p.m. at the Merchandise Mart Conference Center. Admission will be \$3 for AIA members; \$5 for non-members. There will be a cash bar starting at 5:30 p.m. Please RSVP to the CCAIA office by Monday, February 13 by calling 663-4111.

Robert C. Robicsek, AIA
Illinois Council Representative
Chairman, CCAIA Interior Design Licensing
Task Force

The Roots of Midwestern Planning

The Design Committee will sponsor a panel discussion of the planning generators of Chicago and the Midwest, including Daniel Burnham, Frank Lloyd Wright, Jens Jensen, and Walter Burley Griffin. It will take place on Monday, February 13, at 6:00 p.m., at the Archi-Center.

Program panelists include Sally Chappell, professor of art history at DePaul University; Christopher Vernon, University of Illinois at Champaign-Urbana; Don Kalec, professor of interior architecture at The School of the Art Institute of Chicago, and in private practice, restoration work; and Mary Decker, director of the Metropolitan Planning Council. Call 663-4111 to RSVP.

Legal Basics for Architects

For three evenings, February 21, 23, and 28, the CCAIA will present a seminar series designed to give architects a basic understanding of construction and business law. Starting at 5:30 p.m. in the CCAIA Board Room, participants will meet with construction attorneys and learn how to set up a business, the basics of arbitration and litigation, the architect's legal responsibilities, documents, and how to collect fees.

Speakers include Werner Sabo, AIA, architect and attorney, and author of *A Legal Guide to AIA Documents*, who has lectured at colleges and AIA Chapters; Steven Stein, attorney at Greenberger, Krauss & Jacobs, and editor of a four-volume treatise on construction law, who has lectured extensively on the construction process.

Topics at the February 21 session include:

- ▶ Basic understanding of the legal system
- ▶ Courts vs. arbitration
- ▶ Business forms
 - a. Corporations
 - b. Partnerships
 - c. Proprietorships

Topics for February 23 include:

- ▶ The architect's basic responsibilities
 - a. To the client
 - b. To the public
 - c. To the contractor
- ▶ Contract types
 - a. Oral vs. written

- b. AIA
- ▶ Shop drawings
- ▶ Liability for estimates

Topics for February 28 include:

- ▶ An overview of AIA documents
- ▶ Illinois Architecture Act
- ▶ Collecting fees
 - a. Liens
 - b. Arbitration
 - c. Litigation
- ▶ Record keeping

Each program is from 5:30 to 7:30 p.m. Cost for AIA members is \$5 per program or \$12 for all three. For non-AIA members, cost is \$8 per program or \$20 for all three. Call the Chapter office as soon as possible for reservations, 663-4111, as space is limited.

Leasing and Property Management: What the Architect Should Know

On Tuesday, February 7, the Real Estate Committee will kick off its 1989 series of panel discussions with "Leasing and Property Management: What the Architect Should Know." This program will include panelists involved in leasing and managing commercial, retail, and residential real estate. Topics such as space planning, building maintenance and materials, marketing trends, and how architects can improve their services to leasing and marketing professionals will be discussed.

The panelists are Mike Szkatulski, senior vice president of development, Stein and Company; Jack Berger, president, Jack Berger & Associates; and Tom Prescott, vice president, The Charles H. Shaw Company.

The program will be held from 5:00 to 7:30 p.m. in the Merchandise Mart second floor Conference Room (near the M & M Club). The cost to attend is \$5 for AIA members; \$7, non-members and includes light snacks and a cash bar. To RSVP, please call the CCAIA office, 663-4111, by Friday, February 3, 5:00 p.m.

Real Estate Committee programs are always open to all interested parties, and new members are welcome to join the Steering Committee, which is in the process of planning 1989 programs. The Committee's major goal is to provide valuable continuing education for professionals at all levels of experience. ▶

Last year's quarterly programs on real estate development addressed a variety of subjects, such as financing and acquisitions, zoning and land use, and real estate trends. The purpose of these programs is to address real estate issues impacting architects and other design professionals.

The next committee meeting is Tuesday, January 10 at the law offices of Greenberger, Krauss & Jacobs, 180 N. LaSalle, Suite 2700, 5:30 to 6:30 p.m.

Howard A. Kagan
Program Coordinator
Susan Dee
Committee Chair

Construction Documents: Less is Not More

The Practice Management Committee kicks off its Practice Pointers Series with "Construction Documents: Less is Not More," a presentation by Turner SPD. Turner Construction Company's Special Projects Division presenters, Donald Robideau, Kenneth Reider and Gary Eve, will compare specifications and working drawings that are difficult to understand with those that are easily understood and executed, both during the bidding process and during the construction phase.

The presentation will be made Wednesday, March 15, from 5:30 to 7:30 p.m. in the CCAIA Board Room. The cost to attend is \$5 for CCAIA members; \$7 for non-members. Please RSVP by calling 663-4111.

Boston Experience Strengthens Concept Chicago Plans

Committees are hard at work determining program topics and speakers for the program portion of "Concept Chicago 89." Survey results have steered us in the right direction to determine the most appropriate and interesting programs. (A survey of various programs was sent to 300 representative members who selected the programs that most interest them.)

Starting in next month's *Focus*, program topics and content will be described in detail. We plan on offering over 50 programs in the two-day period, and with the assistance from our co-

sponsors (partially listed in last month's *Focus*) this goal can be achieved.

We have not taken on such an ambitious undertaking at the CCAIA. We have been researching other chapters that have had the experience of sponsoring an event of this scale, particularly the Boston Chapter.

The Boston Chapter held their regional convention, "Build Boston," in November. I attended the convention to get a feeling of what we should expect to experience during set-up and the following two days, which were the actual event. I wanted to see just what the attendance was and how many people actually were interested in the exhibits portion of the event.

Everything seemed to flow smoothly from the actual exhibitor set-up to programs, to special events. On the first day, the registration booths were jammed. The reason given was that not



CONCEPT CHICAGO 89

October 5 and 6

everyone pre-registered. Those who pre-registered not only got a substantial price break but did not have to wait in long lines. Keep this in mind when our pre-registration packet is distributed.

The most impressive elements of Build Boston were the variety and content of the programs offered. Of the seven programs I attended, each was very well done in terms of content and speakers. Most programs took the form of a panel, which I found to be an exceptional way to deliver a wide range of information while offering different points of view on the same issue. "Concept Chicago 89" will follow this panel format for most programs.

We are continuing to plan this convention with the needs of our members having top priority. We always welcome the input of our members, and even though the planning phase is well under way, we still welcome new suggestions.

Mary Beth Carroll

Chapter Announces 1989 Design Awards Deadlines

Interior Architecture Awards

March 3 - Intent to enter due at CCAIA office.

April 17 - Submissions due at Chapter office.

June 6 - Awards Ceremony.

Distinguished Building Awards

March 22 - Young Architect Nominations and 25 Year Awards Nominations due at Chapter office.

April 5 - DBA Intent to Enter and Distinguished Service Awards Nomination letters due at Chapter office.

May 3 - Young Architect Awards and 25 Year Awards Submissions due at Chapter office.

June 9 - DBA Submissions due at Chapter office.

June 14 - Chicago Awards Due

October 5 - Awards Ceremony, to be held during "Concept Chicago 89" Convention.

At the time that this piece was due on the *Focus* editor's desk, the Young Architects Committee was still trying to get their act together for a February program. It may happen - then again, it may not. If it is happening, then flyers are sure to be out by the time you read this. All are encouraged to respond accordingly.

The "Alternative Visions: Chicago" deadline for submissions is March 1. If you spent the \$25 to enter, then get your entry in on time. Late entries will be disallowed - and frowned upon as well.

Canoe Club nights continue on February 7 and 21. A special bar supplement to the January *Chicago* magazine made mention of "architects night." Unfortunately, they said there were special deals on beverages. Wrong, quiche eaters! It's free munchies from 6:00 to 8:00 p.m.

The First Annual Young Architects Holiday Party on December 20 was a major success. With somewhere between 150 and 200 people in attendance, it's certain to remain our best attended program of the year. The Head Lice band provided some two hours of high powered rock and roll as the party took over the restaurant as well as the bar at the Canoe Club. Special thanks to Dave Marienthal and the Head Lice for all their help in celebrating the holidays.

Edward Keegan

1989 Mock Exam

Are you prepared for this year's Building Design portion of the Architectural Registration Exam (A.R.E)? Do you feel confident to sit for 12 hours and solve a design problem that could determine your future as an architect?

The CCAIA Young Architects Committee is sponsoring its 1989 Mock Building Design Exam on Saturday, June 3. This exam has been designed to closely simulate the content and conditions of the Building Design portion of the A.R.E.

Your exam solution will be graded by a licensed architect. On Saturday, June 10, you will have the opportunity to meet with the grader for an individual critique. A formal announcement with all details will be mailed in April. This year don't jeop-

ardize your future. Take the Mock Exam and be prepared for the most important 12 hours of your life.

If you are not presently on the Young Architects mailing list, please contact the CCAIA at 663-4111 so you will not miss this and other forthcoming events.

Marc Poskin
Program Coordinator

NEW MEMBERS

AIA

Charles Hasbrouck, SOM; **Adolph Benages**, Carnow, Conibear & Associates; **Vincent Ziolkowski**, Stein & Company; **James Stump**, Stein & Company; **Daniel Sih**, J. W. Sih & Associates; **Donald Madgwick**, J. W. Sih & Associates; **Arthur Cowperthwaite**, SOM; **Gary Ainge**, Hammond Beeby & Babka; **Thomas Mahaffey**, VOA Associates; **Peter Petropoulos**, Balcor/American Express; **Henry Horn**, Horn & Associates; **Gregory Eischen**, Fujikawa Johnson; **Gregory Gobel**, Fujikawa Johnson.

Associates

Dianne Dakich, Cone & Kalb; **Tony Beccasio**, SOM; **Michael Hall**, Edmond Zisook & Associates.

Professional Affiliates

Edward Gregory, Gregory Development Services; **Lisbeth Quebe**, Perkins & Will.

Emeritus

George H. Tsurouoka, AIA; **Ezra Gordon**, FAIA; **Campbell G. Kane**, AIA.

Transfers

From Los Angeles, **Joseph Burns**, AIA, SOM; from Atlanta, **Lane Epstein**, Associate Member, McBride & Kelly; from Austin, Texas, **Joseph O'Neill**, AIA, Ellerbe Becket.

Reinstated

John Duteil, AIA, Mainstreet Department Stores.

NEWSLINE

New Internal Revenue Code Applies to All Firms

In 1986, Congress passed the Tax Reform Act that added Section 89 to the Internal Revenue Code. This Section will affect every employer (regardless of size) who provides a Life, Accident, Health, or other statutory employee welfare benefit plan. Compliance with the requirements of Section 89 becomes mandatory for plan years beginning after December 31, 1988.

The intent of Section 89 is to encourage employers to offer the same or comparable coverage to all employees (in essence, prohibiting the discrimination of benefits in favor of highly compensated employees) and ensure that employees are able to receive benefits from the plan. A secondary intent is to raise revenues through additional tax income, via penalties for non-compliance.

Section 89 imposes both "qualification testing" and "nondiscrimination testing" requirements on each employer for all employer-provided benefit plans, and there are severe tax penalties for a firm's failure to comply with these requirements. Compliance with Section 89 is strictly the responsibility of each employer.

This information represents the tenets of Section 89 in very simple terms. Because of the complexity of the law, including the absence of final IRS regulations and interpretations, you may wish to contact your tax advisor for guidance in making the required good faith effort to be in compliance with this law.

All You Ever Wanted to Know About The Illinois Council, AIA...

And Weren't Afraid to Ask - or - Who Are "They," What Are "They," and Why Are "They?"

By Les Larsen, AIA
President, IC/AIA

Annually, and not surprisingly at dues payment time, the above questions are asked by many members throughout the state. They are fair questions and hopefully, should you elect to pursue the issue by reading further, the issue will be "put to rest," at least for this year.

The bylaws of the ICAIA will be used herein to get at some of the answers. They (the bylaws) contain a lot of "verbage" on the subject that will be either omitted for the sake of brevity, paraphrased for clarity, or quoted for accuracy (my decision). To begin with, as with most organizations that contain the word "American" in their title, the IC/AIA is for good and against evil. Now, with that out of the way, on to more serious matters:

"The Council shall represent and act for the Institute and the Chapters on statewide matters only, within the State of Illinois."

In a nutshell, this means that it is the IC/AIA's responsibility to ensure that AIA positions (ours, yours, and mine) on legislative and regulatory issues are communicated to legislature, agencies, and the Governor's Office, as well as appropriate state officials. The Illinois Council is the central collection and distribution point for legislation, regulations, studies, and testimony. To give you an idea of the magnitude of this task, over 6,000 bills with an untold number of amendments were introduced in the 8th General Assembly (1987-1988).

Executive Vice President Shirley Norvell, Honorary AIA, "quarter-backs" the IC/AIA operation in

Springfield, where the legislative "action" in our state takes place. She is our lobbyist and there is none better in the state. So, you say, if she's so great, how come we still have such onerous laws on the books as the Scaffold Act and laws that carry disproportionate penalties for architects? The answer is: The IC/AIA represents ALL of the architects in this state, and only half of them (49%) are dues-paying AIA members, leaving us (IC/AIA) woefully short of the necessary funds to do the job in its entirety properly.

What is meant by this is that we do fall short in such areas as communications with you - the AIA member, our ability to assist local governments on certain issues, our ability to develop "in depth" reports and studies on all the salient issues (we do this on selected issues), and, of course, all of this plays into the necessity for a strong statewide PAC, which is administrated by the IC/AIA. We are continually trying to improve our Annual Awards Program each November in Springfield, as well as give you a statewide directory on an annual basis. (Hopefully, your answer to this problem is to help get the other 51% aboard to help shake the load.)

Incidentally, Chicago, because of its size, has proportionately and properly more delegates on the IC/AIA than any other chapter in the state. Rest assured, your voice is being heard - but only in direct proportion to your making it heard through your chapter.

Perhaps I should digress just long enough to remind you - if you do not already know - the AIA is a three (3)-tiered organization, i.e., National (AIA), State (IC/AIA), and Local, in your case, CCAIA. You cannot belong to one without belonging and paying dues to them all. Sorry, but that's the way it is.

So much - at least for now - about the IC/AIA on the state level, and back to the bylaws for a look at what happens at the National level.

"The State of Illinois is the Illinois Region of the American Institute of Architects, and the Board of Directors of

the Council shall function as the Illinois Regional Council."

As the Illinois Regional Council, the Board elects two regional directors, through whom we make our wants and wishes known at the national level. The Illinois Regional Directors, Richard Cook, FAIA, of Chicago, and Professor Walt Lewis, AIA, of Champaign, are directors-at-large of the IC/AIA and attend our Board meetings, report to the Board on national matters, and receive direction from the IC/AIA Board on national matters. They do not have voting privileges on the IC/AIA.

So much for this "two-dollar course" on the IC/AIA. I hope it makes the \$95 you are spending toward the Illinois Council more palatable. You are, of course, invited to attend any of our Board meetings. All we ask is for some advance notice - our space and furniture are limited (we might have to borrow extra chairs from the undertaker). Please feel free to call on me at any time with comments or questions. Hopefully, I'm a step ahead of you on state issues; if not, I know where to get the answers.

Thank you and Happy New Year (belated)!



Arnold "Les" Larsen became president of the Illinois Council, American Institute of Architects effective January 1, 1989. He has been an AIA member since 1961, when he joined the Chicago Chapter and subsequently became a Charter Member of the Northeast Illinois Chapter, serving as president of that chapter in 1985. Activities on the Council include serving as treasurer and secretary. A practicing architect since 1955, he is founder and principal of Larsen-Wulff & Associates, Inc. in LaGrange.

Investigating Historic Slate Roofs

By Richard S. Koziol, AIA
Senior Architect
Wiss, Janney, Elstner Associates, Inc.

Slate shingles are probably the most lasting roof material known. They are attractive, extremely durable, fireproof, and require relatively little maintenance.

When leaks develop in a slate roof, it is often quite difficult to determine the source of leakage. If the building is tall and the slope of the roof steep, identifying the leakage problem(s) becomes particularly difficult. Water frequently enters the roof and travels many feet along the roof deck and rafters before showing up on the walls or ceilings inside the building.

Normally, inspecting the roof from the ground with binoculars is a good first step to gain an overall impression of conditions. If the building has towers or dormers, the inspector can use these elements to get closer to the desired area. Sometimes this limited type of inspection is sufficient to identify the area where the problem is occurring. When this type of inspection is not successful, the roof must be inspected from scaffolding or from special ladders that are suspended from the ridge. Because slates are very brittle and easily broken, care must be exercised in getting to the trouble spot. Only experienced persons should attempt inspections of slate roofs. Breakage may result if the roof is not properly rigged.

It is a good idea to make a few carefully selected inspection openings to observe existing conditions. This will enable an assessment of the underlayment felt, nails, flashings, and wood sub-framing. Knowing the as-built construction and size of existing slates will permit proper repair and/or replacement.

Usually, the inspection openings can be made at wall flashings or near



some other vertical penetration where removal and repair of slates is least difficult. A special tool called a "slate ripper" can be used to cut the nails without damaging the slates. Repair techniques involving mechanically-attached copper tabs and sealant are required to reinstall the slate properly.

How Slates Work

Slates can be thought of as loosely-attached shingles laid in courses side by side. Each shingle has its side joints open, and adjacent tiles do not overlap. Double coverage is required in all parts of the roof; therefore, each course overlaps the next one below. Without the double coverage, water would run through the exposed vertical joint and enter the roof.

Roofs with steep pitch shed water much quicker than ones with shallow pitch, and they frequently leak less. When water does enter a roof, a marginal secondary line of defense is provided by the underlayment felt below. The underlayment felt is not intended to serve as a back-up roof: consider that every nail used to fasten the slate or tile is driven through it. The main purpose of the felt is to serve as a temporary roof during construction, to serve as an insulator, and to provide a cushion for the slate.

The ability of a slate roof to resist moisture infiltration is related to two basic factors: head lap and method of coursing, i.e., relationship of adjacent joints between slates. Because slates are laid side by side with a slight space between, water can enter at the gaps and run under the shingles. This water tends to creep outward in a fan pattern due to capillary action between slates (see Fig.1). Therefore, to prevent leakage, the nail holes in the slates must lie outside this area. The relative position of the slate shingles must avoid locating the nail holes within the area of capillary spread.

Slates are "hung" in place with nails. Each slate contains two prepunched holes. The nails are driven so that the slate is set firmly in place but not so tightly that the slate is strained and possibly breaks. Of utmost importance is the size and type of nail used. A nail that is too short may not provide adequate anchorage into the deck. A nail that is too long or too thick may split the wood or the slate itself. Copper and lead-coated copper nails are best because they offer superior resistance to corrosion. A lesser quality steel or galvanized nail may deteriorate sooner than the slate itself, requiring premature repair of an otherwise sound roof. ▶

Causes of Leaks

Leakage through slate roofs can occur for many reasons. As mentioned earlier, slate is a long-lasting, but easily broken, material. Often, breakage occurs due to falling ice, snow or tree branches. Icicles falling from the walls or gutters of towers, dormers and higher roof areas can cause breakage at lower roof areas. Some slates contain minor hairline cracks as a result of quarrying activities or stress from shipping. When cracks develop, spalling will frequently follow from freeze/thaw deterioration. The soundness of an individual slate can be evaluated by "sounding" with a slate hammer. Slates with cracks give off a distinctive ring, and are, therefore, easily identified by an experienced inspector.

Water sometimes finds its way under the covered parts of the side joints between adjacent slates. This type of leak is usually due to the side lap being less than the minimum necessary for the length of slate used for the particular roof pitch. The size of slates selected for a given roof is in part a function of the roof pitch.

The most common location for leakage is where the slate join other structural features of flashings - at ridges, hips, valleys, abutments, gutters, and eaves. The change in geometry of the roof at ridges and hips requires special attention in detailing. The tile or metal copings normally used to cap the top courses and protect the uppermost row of nails from water are particularly susceptible to lifting action from wind. Wind wears on attachments and frequently causes the cap detail to become loose.

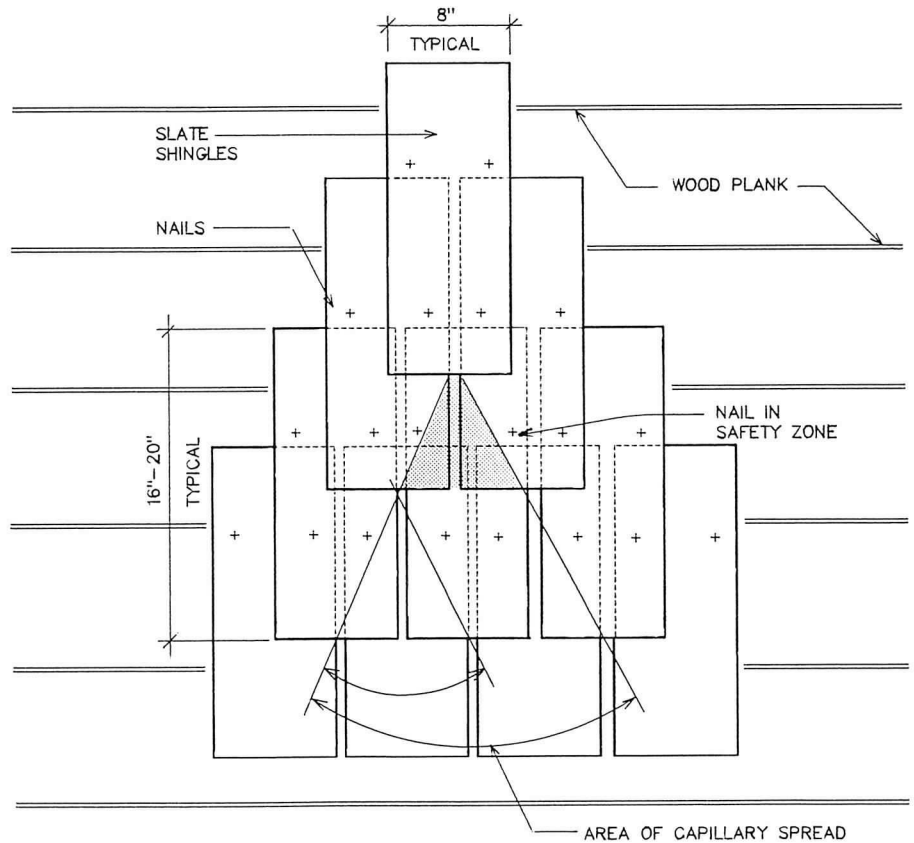
Valleys and rake wall flashings are the most vulnerable parts of a roof system. Copper or lead-coated copper are the most common types of sheet metal used for these flashings. Despite the durability of these materials, continued wearing action from concentrated water runoff eventually erodes the surface. Experience has shown that 16-ounce copper flashing will often corrode in 55 to 65 years. The beginning of an impending corrosion problem can usually be detected by the development of small brown pits and pin holes in the copper. When corrosion has progressed to this point, there is usually little that can be done short of taking off the slate to expose the flashings and installing new sheet metal.

Probably the most frequent cause of leakage at terminations is simply deterioration of the sheet metal from

weathering. Flashings may break or open up if differential movements between different building elements are not taken into account. Broken solder joints in these types of flashings also cause leaks.

Eaves are subject to ice-damming problems when ice and snow back up along gutters. The worst problem gutters experience is damage from freezing.

maintain the existing architectural features. A methodical inspection of distress, flashing details, and the original design concept is necessary in order to develop a workable solution that will function properly and appear aesthetically appropriate.



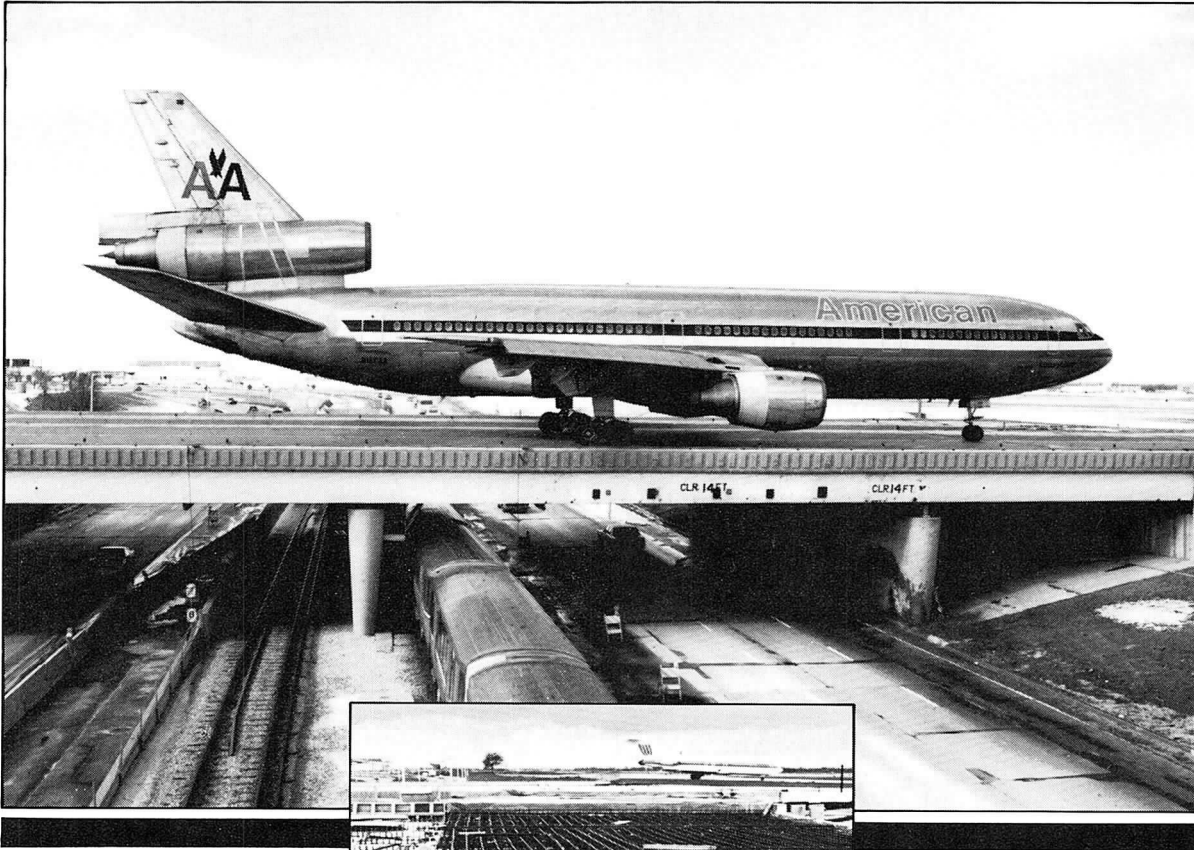
The weight of water and ice can weaken the gutter hangers. The gutters themselves may become deformed, causing the hangers to fail. Water penetration at the eaves can corrode the nails that secure the gutter hangers. On some older structures, gutter design did not incorporate expansion joints. Straight lengths of gutter exceeding 40 feet move a great deal due to thermal expansion. A 10-foot length of 16-ounce copper will expand almost 1/8 inch when subjected to a temperature increase of 100 degrees Fahrenheit. If expansion joints are not provided, the gutter seams will split and try to act like expansion joints. The open seams may allow water to enter the eaves. Excessive leakage from severely deteriorated gutters can also cause erosion and deterioration of masonry walls.

There is usually no easy corrective solution when leaks develop in slate roofs. A first-class roof system should employ first-class repair in order to

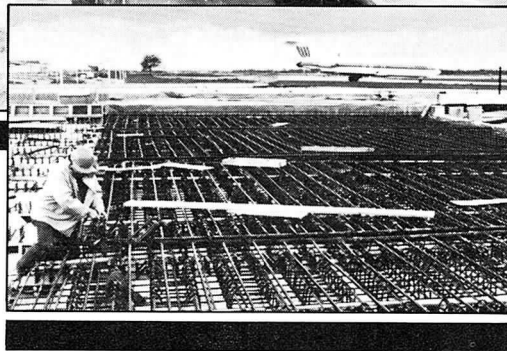
Fig. 1. Standard slate coursing showing how water creeps under the shingles due to capillary spread

Mr. Koziol has been involved with a variety of roof, masonry, and curtain wall investigations since joining Wiss, Janney, Elstner Associates, Inc., including evaluating the condition of existing roofs, determining the cause of roof membrane failures, and determining the cause of water infiltration in masonry and curtain wall systems. Experience with roofs includes analysis utilizing radioisotopic moisture surveying techniques. He has been responsible for the development of contract documents and field observation for repair and replacement of roofs for many types of buildings, as well as the repair of masonry and curtain wall systems. Mr. Koziol is a member of the CSI and the American Society for Testing and Materials.

THE HOTTEST BRIDGE IN TOWN!



TAXIWAY BRIDGE GETS BUILT-IN SNOW MELT SYSTEM



When you're the busiest airport in the world, you can't take any chances with Chicago winters. That's why we helped O'Hare Field build a new taxiway bridge that can take a lot of weight *and* a lot of heat.

Within this 36,000 sq. ft. concrete bridge lies pre-fabricated piping which provides around-the-clock protection from ice and snow. The bridge assures a safe, dry surface for passing aircraft all winter.

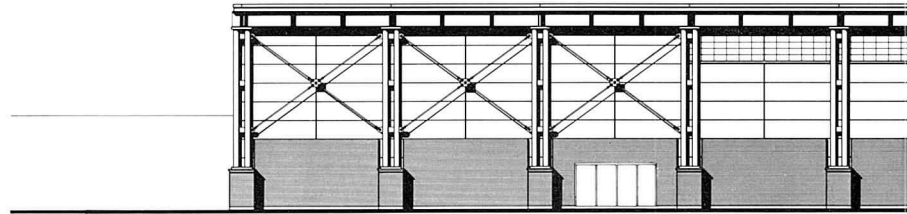
More than 30,000 gallons of heated oil flow through these pipes. The 130-degree liquid is warmed by boilers in the airport's central heating plant, then flows underground to the bridge through a 1/3-mile long pipeline.

Any system designed to protect against Mother Nature calls for quality materials and good workmanship. And when it's all buried under tons of concrete and dirt, it calls for an experienced MECHANICAL CONTRACTOR with highly trained union pipefitters to install it right the first time!

Need to find a qualified MECHANICAL CONTRACTOR?
CALL 312/670-6756.

**PIPING
SYSTEMS
COUNCIL**
EXPERIENCED
MECHANICAL CONTRACTORS & TRAINED UNION PIPEFITTERS

Sketchbook



PARTIAL NORTH ELEVATION

Education Facilities

Sketchbook Schedule

April - FANTASY ARCHITECTURE
(We hope Spring brings out the notion to share oddly imaginative, curiously extravagant, whimsical, fanciful projects).
Materials due February 14.

May - PRESERVATION/RESTORATION/REHAB. Materials due March 14.

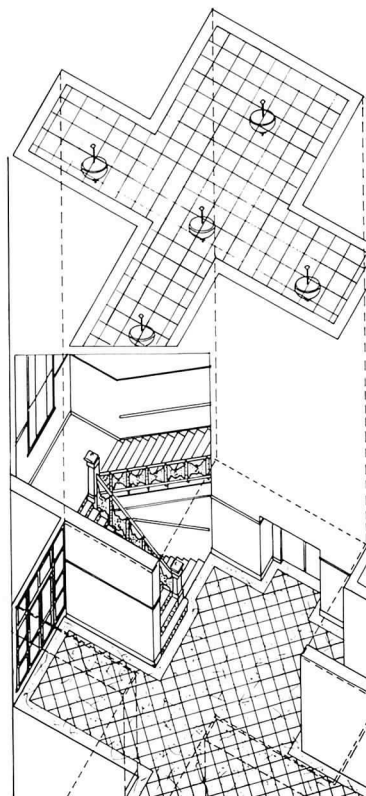
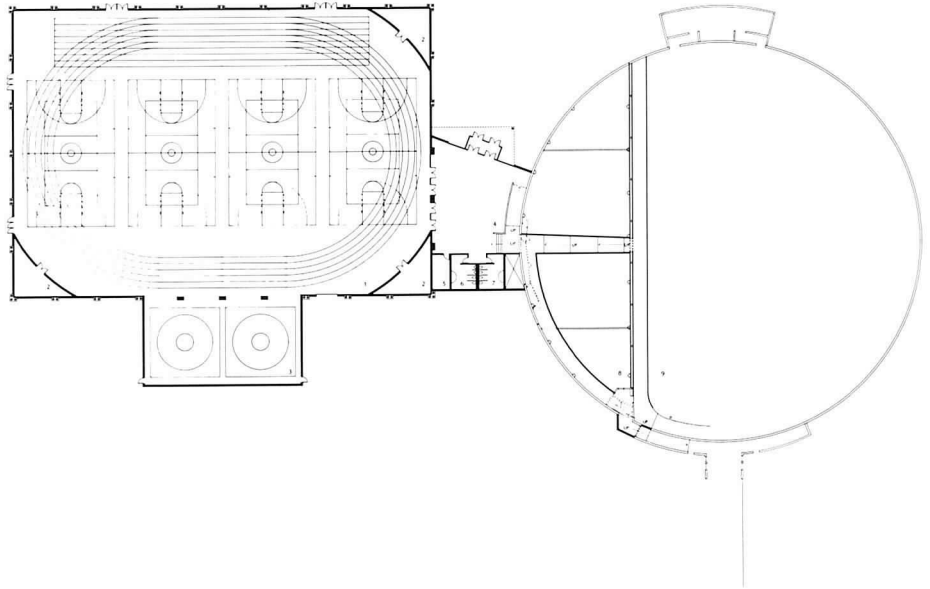
June - VACATION HOUSES.
Materials due April 17.

July/August - PARKS/PLAYGROUNDS/RECREATIONAL FACILITIES.
Materials due May 15.

September - INDUSTRIAL BUILDINGS. Materials due June 14.

October - FACILITIES FOR AGING
(Housing, senior centers, residential care, continuing care retirement communities.)
Materials due August 15.

Please submit a set of sketches and/or hardline drawings (preliminary sketches are of particular interest), along with a black and white photo and a description of the project, up to 100 words, plus a description of the firm, up to 60 words.

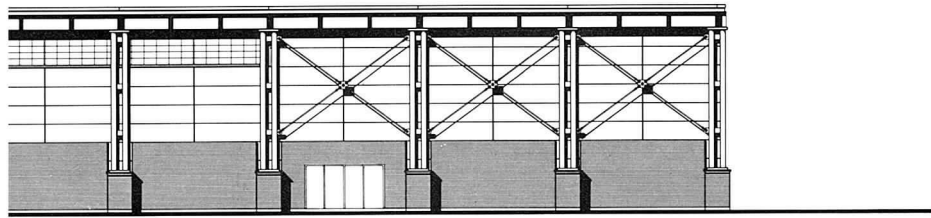


Fisk Hall School of Journalism Northwestern University

Fisk Hall, designed by Daniel Burnham in 1899, is being renovated to restore its original character, while meeting the changing needs of the University's School of Journalism. The project will include extensive interior rehabilitation of the lobby, corridors, classrooms, toilets, stair, flooring, lighting, HVAC, and a new elevator. The lobby will have a marble floor and moldings in a classic design from the building's turn-of-the-century era, illuminated by brass pendant lights. The challenge has been to enhance Burnham's architecture while providing office and classroom spaces suitable for new uses.

Criezis Architects

Criezis Architects is an 11-person architecture and interior design firm established in 1986 by Demetrios A. Criezis, AIA and Susan Schneider-Criezis. The firm is involved in a broad range of projects, including health care, research and educational facilities, elderly housing, bookstores, industrial buildings, office interiors, and residential design.



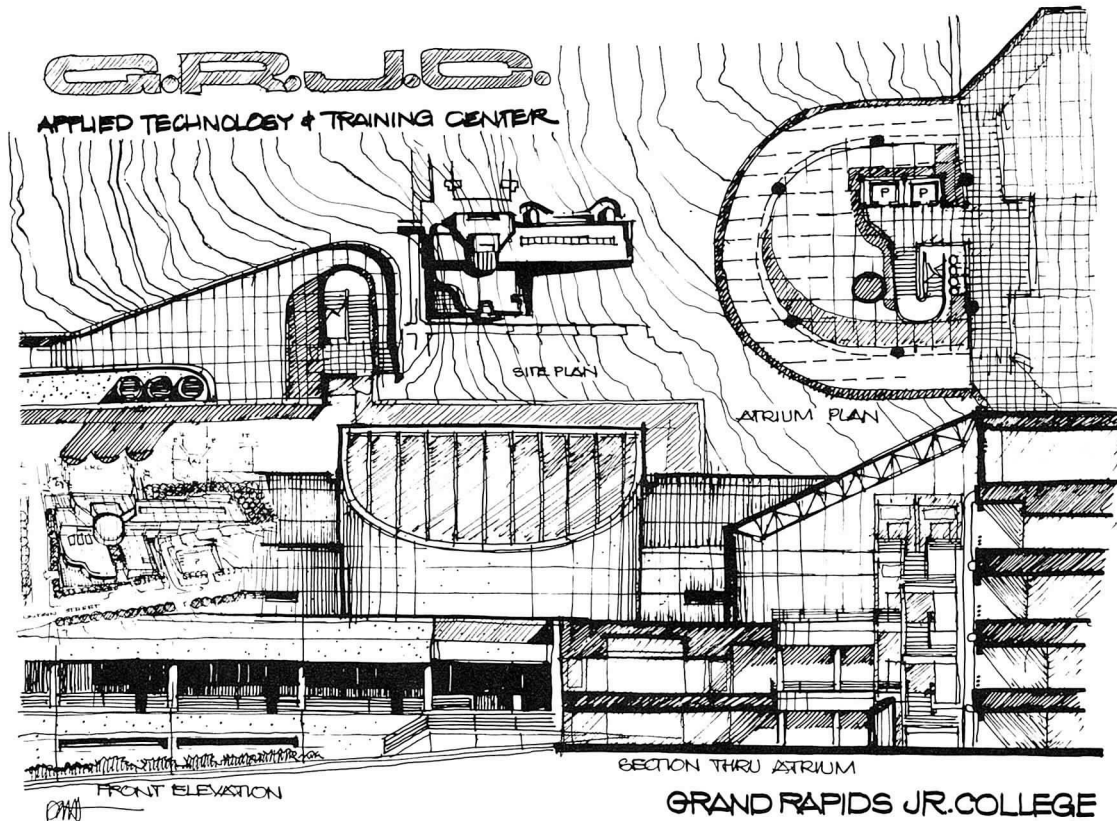
Glenbrook South High School Fieldhouse

This 45,000 square foot fieldhouse is part of a campus expansion, which will include additions to academic and performing arts facilities. The fieldhouse will be connected to the existing gymnasium by means of a new lobby. The structure clear spans 165 feet and is 240 feet in length. The trusses will bear on exposed steel spandrel beams, which are supported by paired round columns. The steel columns and

their associated masonry piers are proportioned on the classical doric order. The building will house a 160 meter six-lane running track used for competition indoor track and field. Four teaching stations and a wrestling room will be used for physical education and interscholastic athletic competition. Project team members are Ray Pigozzi, FAIA; Andy Mendelson, AIA; Bob Bunda; Matt Wylie; Stu Brodsky; Janet Saewert, AIA; Craig Wyatt; Mary Ford Cavanaugh.

O'Donnell Wicklund Pigozzi and Peterson Architects, Inc.

The firm offers its client comprehensive design and planning services for new construction, renovation, and interiors, as well as graphic design. Educational clients include over 40 local school districts and 15 institutions of higher education.



Sketches by David A. Hansen, AIA

Grand Rapids Junior College Applied Technology & Training Center Grand Rapids, Michigan

The five-story facility will serve as a training center for students entering Western Michigan's technical industries, and includes classrooms, laboratories, offices for faculty and professional societies, an economic development center to accommodate training seminars, and parking for 140 cars. The structure is located on a steeply sloped site and

progresses in layers along the hill's slope, permitting residents of the adjacent neighborhood of landmark Victorian mansions to retain unobstructed views of the landscape. The Associate Architect for the project is WBDC Group, Grand Rapids. P&W's design principal is David A. Hansen, AIA; the project's managing principal is C. William Brubaker, FAIA; design principal for interiors, Neil P. Frankel, AIA.

Perkins & Will

Perkins & Will Group, Inc. is a 53-year-old architecture/engineering/interior architecture/planning firm with offices in Chicago, New York, and Washington, D.C. The firm serves a broad range of national and international clients in the planning and design of large-scale public, commercial, transit, education, medical, and research and development facilities.

Copyrights for Architects: The Basics

By Steven M. Sharafian Esq.

A copyright is a right granted by federal law to the creator of an original work of authorship. The owner of a copyright has the exclusive right to copy, prepare derivative works based upon the copyrighted work, or distribute the copyrighted work to the public by sale or other transfer of ownership. Under current law, an architect's plans and drawings are copyrightable if they are both original and fixed in a form of expression (i.e., drawn or entered onto a computer storage system) that can be perceived, reproduced, or otherwise communicated either by the human eye or other mechanical means. The 1987 version of the American Institute of Architects B141 Owner/Architect Agreement provides that the architect owns the drawings, specifications, and other documents produced under the terms of the agreement, as well as the copyrights embodied in them.

While a copyright would prevent another from making an actual copy of a copyrighted work, a copyright does not protect the ideas expressed in a work. Ideas cannot be protected under federal copyright law. For example, if an architect produces a set of plans for a house, a copyright would protect against unauthorized copying of the plans. Under current law, a copyright would not prohibit another architect from designing a similar house if the other architect did not actually copy the original architect's plans. Nor would a copyright prohibit an architect from sketching another architect's facade and incorporating certain elements into his or her set of plans. Although the above statements are general in nature, and cases would turn on individual facts, it is sufficient to note that copyright protects expressions and not ideas.

Copyright registration is generally not considered to be mandatory for a work to be legally protected. There are many advantages, however, to registering a work with the Copyright Office. Registration with the Copyright Office serves as a public record of the copyright claim, creates the right to file an infringement suit, creates a presumption of a valid copyright, and makes available a broader range of remedies in copyright infringement suits. These remedies include the right to an election of statutory damages and costs of the suit and reasonable attorney's fees.

Fortunately, registering a work with the Copyright Office is simple and inexpensive. Three items must be sent to the Register of Copyrights at the Copyright Office, Library of Congress, Washington, D.C. 20559.

1. A properly completed VA application form, which can be obtained from the Copyright Office, Publications Section, LM-455, Library of Congress, Washington, D.C. 20559;

2. A non-refundable fee of \$10 to cover the filing costs of each application. Each registration can consist of any number of drawings, but the work must be related to a specific project or theme; and

3. A copy of the work being registered. The type of copy that has to be filed with the Register depends upon the past published history of the work itself. For unpublished design drawings, one complete copy of each print needs to be sent.

It may take as long as 90 days for the Register's office to process an application. The copyright registration, however, becomes effective on the date the copyright office receives all three required items in acceptable form, regardless of the time that it may take the Register to process the application and send the registration certificate.

If a copyrighted work has been published (i.e., there has been a distribution of copies of a work to the public by sale or other transfer of ownership, or rental, lease or lending), registration must be made within three months after the first publication of the work.

If the copyright owner fails to comply with this requirement, he or she will be foreclosed from collecting statutory damages or attorney's fees in the event an infringement action is necessary. Likewise, if publication has taken place, a copyright owner must also place a proper copyright notice on the work. This notice consists of three parts:

1. The word "Copyright," the copyright symbol (the letter "c" in a circle), or the abbreviation "Copr.;"

2. The year in which the work was first published; and

3. The name of the copyright owner.

This notice must be affixed on all copies that can be visually perceived in such a manner as to give reasonable notice of the copyright claim. As a practical matter, it is simplest to place a copyright notice on all work whether or not they will be published. If more than a relatively small number are published without the required notice, the work will be injected into the public domain unless registration has occurred prior to such publication, or within five years thereafter.

A copyright can help prevent unauthorized use, reuse, or modification of an architect's plans. Used in conjunction with a well-drafted ownership of documents provision, it can effectively limit an architect's exposure to liability, as well as to protect the expression of his or her ideas.

This article is reprinted with the permission of Mr. Sharafian who is an Attorney with Natkin & Weisbach, Attorneys at Law, San Francisco, California. © 1988 Natkin & Weisbach.

Madlener House: Tradition and Innovation in Architecture by Carter H. Manny, FAIA. Chicago: Graham Foundation, 1988. 42 pages, 76 illustrations, 8 in color, \$10.00.

Reviewed by Eric Emmett Davis

Once in a while, a book will come along, the importance of which surpasses its size and its subject matter. *Madlener House: Tradition and Innovation in Architecture* is a small, brief, elegantly-crafted monograph on an equally elegant house, but it is far more significant to us because it is an excellent example of a genre that we see far too little of. It's the right size, it's well laid-out, it has a few truly beautiful photographs (proving once again Hedrich-Blessing's pre-eminence in the field), and in concise terms, tells the story of a great house. While many of the outstanding buildings in Chicago have some form of publication history, none have been displayed in a jewel, like this little book.

Madlener House is familiar to Chicago architects largely because it is the home of the Graham Foundation for Advanced Studies in the Fine Arts. We go there for meetings or lectures, and while we appreciate the quality environment and read the plaque out front, few of us are aware of the place that Madlener House serves in Chicago's cultural history, or know much about its architects. Mr. Manny's brief but dense text outlines for us the roles of all the principal players in the life of the building to date (with the characteristically modest exception of the major philanthropic foundation, which he himself directs).

The house was built in 1901-2 for Albert and Elsa Madlener by a relative of theirs, Richard Schmidt, and his associate, Hugh Garden, during one of the waves of social reform that swept through Chicago around the turn of the century. Schmidt's father, Ernst, worked with Clarence Darrow to defend the men indicted after the Haymarket Riots, and the Madlener

family was similarly involved in progressive causes.

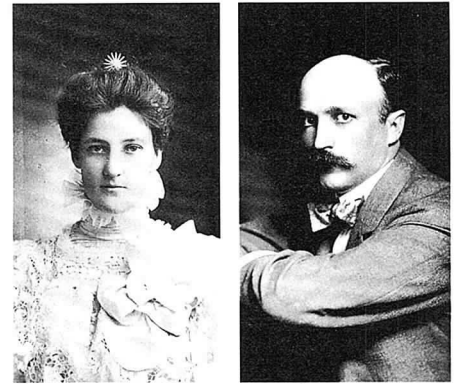
Schmidt and Garden's design came out of the ferment in Chicago that we call the Prairie School. Mr. Manny discusses their involvement with Wright and others of the movement. He discusses the house's aesthetic geneology with reference to Schinkel and other German neoclassical architects, to Garden's obvious decorative connection with Sullivan, and to Wright, specifically the Winslow and Heller houses. This reviewer finds it odd that Mr. Manny did not make the most obvious connection - to the Charnley House two blocks away (done by Wright for Sullivan), currently housing the SOM Foundation. While not as cubic as Madlener, which is the closest thing to a Prairie School palazzo, Charnley is certainly of the same type, since it is firmly set within the city, not Hyde Park or Oak Park. Nevertheless, it is good to see Schmidt and Garden's work discussed at this level, something we haven't seen much of since the *Prairie School Review* ceased publication.

Also worthy of note is the coverage of both the sculptor, Albert Van Den Berghen, and the renovation architect, Daniel Brenner. Often, books of this type do not acknowledge the full range of contributors to an historic structure. The sculpture is integral to the wonderful interior of the house, and the house would probably not exist today unless it had been converted to a different purpose. (The Graham Foundation bought it in 1963 to save it from demolition.)

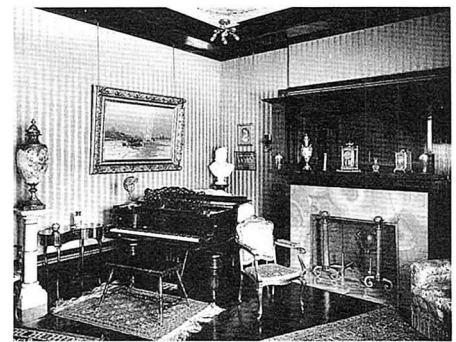
Yet, this little monograph would slip into obscurity if it were not of such unique quality, which makes us realize how important it is for there to be many others like it. The aforementioned Charnley House needs a book like this (and it is certain to get one because of its owner), as do a dozen other buildings in this city. There have been pamphlets produced, of the kind one picks up during an ArchiCenter tour, but most of the buildings covered by them need beautiful mini-monographs like this one. Imagine what an invaluable resource such a series would be and

you realize the true importance of this book. Chicago's major landmarks deserve individual, high-quality coverage in a manageable format, such as the Madlener House has received.

Madlener House: Tradition and Innovation in Architecture is available at the ArchiCenter, the Chicago Historical Society, Frank Lloyd Wright Home and Studio, and the Prairie Avenue Bookstore.



Elsa Seipp at about the time of her marriage to Albert Madlener, 1898, and Albert Fridolin Madlener, 1907.



Music room, c. 1903.

THE CALENDAR



February

1 ▼

IIDA Design Awards

1989 International Illumination Design Awards submissions due today. Contact Bob Sagula, 8:00 a.m. to 9:00 p.m., 885-3138.

Pritzker Prize Deadline

Contact Bill Lacy, FAIA, 212/674-6833

ArchiCenter Lecture

New Spaces in Old Places: Community Design for the Non-Profit. Speaker: John Tomassi. 12:15-1:00 p.m. Free.

7 ▼

CCAIA Real Estate Committee Program

Leasing & Property Management. 5:00-7:30 p.m. Merchandise Mart 2nd fl Conference Room. \$5, AIA members; \$7, non-members, includes snacks. RSVP by 2/3, 663-4111.

Young Architects Retreat Night

Canoe Club Conversations. 2843 N. Halsted. 6:00 p.m.

8 ▼

ArchiCenter Lecture

Centers of Culture: Wooden Synagogues of Pre-War Poland. Speaker: Thomas Hubka, associate prof., Dept. of Arch., Univ. of Wisc.-Milwaukee. 12:15-1:00 p.m. Free

11 ▼

LPCI Preservation Ball

At Chicago Public Library Cultural Center. 6:30 p.m., cocktails; 8:00, dinner, dancing to Stanley Paul Or-

chestra, raffle, silent auction. Reservations limited: call 922-1742.

Design Committee Program

The Roots of Midwestern Planning. 6:00 p.m. ArchiCenter RSVP, 663-4111.

Seminar

Masonry Design & Construction - Avoiding Potential Problems. Sponsored by Dept. of Engineering Professional Development, University of Wisc.-Madison. Through 2/14 at The Wisconsin, 702 Langdon, Madison, Wisc. Meets CEU criteria. Information: Ray Matulionis, 800/262-6243.

14 ▼

SEAI Program

Enforcement of the Illinois Structural Engineering Act. Speakers: Hal Taylor & Dennis Ramsey, Ill. Dept. of Professional Regulations. Como Inn, 546 N. Milwaukee Ave. Dinner, 6:15 p.m., program to follow. Cost & reservations: 372-4198.

ArchiCenter Lecture

AT&T Corporate Center: A View of Twin Towers. Speaker: Bonnie Humphreys, SOM. 12:15-1:00 p.m.

15 ▼

CCAIA Interior Design Licensing Forum

Sponsored by CCAIA Interior Design Licensing Task Force. Speakers: 6:00-7:30 p.m. Merchandise Mart Conference Center. \$3, AIA members; \$5 non-members. RSVP by 2/13, 663-4111.

16 ▼

Northern Ill. Chap., CSI Dinner/Program

What's New in Lighting. Speaker: Connie Whiteley, Lighting by Design, Inc. Holiday Inn, 860 W. Irving Park Rd., Itasca. Dinner, 7:00 p.m.; program, 8:00 p.m. \$15. Reservations/information: Ed Janis, 325-6160.

21 ▼

Legal Basics for Architects

1st session. Basic understanding of the legal system, courts vs. arbitration, business forms. 5:30-7:30 p.m. CCAIA Board Room. \$5 ea. session/\$12 all three (members); \$8/\$20, (non-members)

Young Architects Retreat Night

Canoe Club Conversations. 2843 N. Halsted. 6:00 p.m.

22 ▼

ArchiCenter Lecture

From Mind's Eye or Blueprint: The Art of Architectural Model Building. Speaker: Richard J. Tickner. 12:15-1:00 p.m. Free.

23 ▼

Legal Basics for Architects

2nd session. The architect's basic responsibilities; contract types; shop drawings; liability for estimates. 5:30-7:30 p.m. CCAIA Board Room. Cost: See 2/21 session.

26 ▼

CWA Annual Brunch

Speaker: Adele Naude Santos. Information: Carol Schmidt, 786-0770.

28 ▼

Legal Basics for Architects

3rd session. Overview of documents; Illinois Architecture Act; Collecting Fees; Record Keeping. 5:30-7:30 p.m. CCAIA Board Room. Cost: See 2/21

March

1 ▼

Alternative Visions Deadline

Submissions due between noon & 6:00 p.m., 1255 S. Wabash.

3 ▼

Exhibition

Art by Architects. Showcasing the artistic visions of Chicago architects. Opening receptions: Fri., 3/3, 5:00-9:00; Sat., 3/4, 8:00 p.m.-1:00 a.m. Mars Gallery, 1139 W. Fulton Mkt. Information: 226-7808.

OPPORTUNITIES

Designers

Share bright office space

In newly renovated loft building on Clybourn with great city views, convenient access to restaurants and retail and plenty of parking. Rent includes work station and shared reception area, conference room, kitchenette, and office equipment. Fitness center in building. For more information, call 312/642-6126.

Director of Interior Design

Our 35-person architectural and interiors firm based in Minneapolis is seeking a partner to direct our national practice, including: corporate, commercial, retail, and medical clients.

We are a design leader and require an individual who demonstrates design sensitivity, management and marketing experience, as well as leadership qualities.

Please send resume to:
Sandra Henoeh
333 W. Wacker Dr., Suite 700
Chicago, IL 60606

Large, Lighted Graphics/Drafting Table

Motorized - tilt/raise/lower controls. Auto-trol lighted model 3451/7336 B-3. Clean 50"H X 60"W lighted area with variable intensity control. Large tilt ange.

Good condition. No damage. \$950 or best offer. Available now.

Berdovich & Associates, 307 S. Milwaukee Ave., Wheeling, IL 60090, 312/459-3320

Specification Writer

Specification Writer to head department. Must have ten to fifteen years of experience and a degree in architecture. Aggressive, well-established firm. Salary commensurate with experience.

Contact:
John Reif
Flad & Associates
P.O. Box 5098
Madison, WI 53705
608/238-2661

City of Aurora Plan Examiner/Inspections and Permits

Current opening in extremely active Inspection/Permits Dept. in high-growth municipality. Position involves:

1. Reviewing & evaluating plans for code compliance;
2. Consulting & providing recommendations to contractors, engineers & architects regarding plans, and specifications;
3. Making code interpretations;
4. Assisting public in securing necessary permits;
5. Advising Permanent Building Code Committee on recommended Code changes.

Requirements include well-rounded background in architecture, civil engineering., plan examination or closely related field & 3 yrs. progressively responsible experience in preparing &/or reviewing construction plans & specifications.

Salary commensurate with experience & qualifications. Excellent pkg. of fringe benefits. City residency required after one yr. of employment.

Please submit resume as soon as possible to:
Director of Personnel/Labor Relations,
City of Aurora,
44 E. Downer Place,
Aurora, IL 60507,
312/844-3626.

Denver Architectural Firm

is looking for Chicago architect/firm to act as front for area projects/clientele provided by Denver firm. Office & fax required. Leasing of space, joint ventures, or other options will be considered.

For more information, call Gary Ellermann at Slack Ellermann Architects PC., 303/220-8900.

ASSOCIATE ARCHITECT

Computerized Management Services, Inc. is searching for a talented, creative individual to fill the position of Associate Architect. This person will participate in the development & implementation of the design services as one of the three "Key" members of our Corporate Development Team. The personal, professional & monetary rewards will be proportional to the challenges of the position. In addition to the obvious Architectural credentials, the successful candidate . . .

should exhibit entrepreneurial attitudes & enthusiasm. The ability to be innovative & aggressive will be the major ingredient for the success of the program & the corporation as a whole . . .

must exhibit personal confidence in their professional skills & talents & must be personable & friendly . . .

must have direct experience with the operation & management of an Architectural Design office . . .

must sign & complete a five year professional employment contract.

IMMEDIATE responsibilities will include:

- Assist with devel. of the Arch. Construction Document elements in the CAD system.
- Assist with selection & implementation of a Construction Specifications software system.
- Assist with devel. of the Architectural Services Marketing Program.
- Assist with devel. of an Arch./Mech./Elec. Products library.

BASIC responsibilities will include:

- Assist with Client Marketing.
- ALL Design activities.
- Consult. Engineering firms selection, coord. & management.
- Materials, colors, & product manufacturer selections.
- Supervisory input to Contract Documents preparation.
- Specifications review & approval.
- Assist with bid reviews & evaluations.
- Periodic site inspections.

BENEFITS

- Group Major Medical Insurance.
- Life Insurance.
- Short Term Disability Insurance.
- Two Weeks Paid Vacation.
- A Dedicated 80386 Micro-computer Design Workstation.
- Upper Management Decisions Participation.
- Potential Stock/Profits Participation Plan.

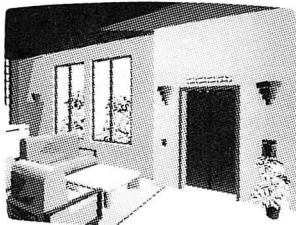
Interested Design Professionals may respond in confidence to:

Bruce M. Cohoon, President
Computerized Management Services, Inc.
1 S. Greenleaf St., Suite "E", Gurnee, IL
(312) 623-6500

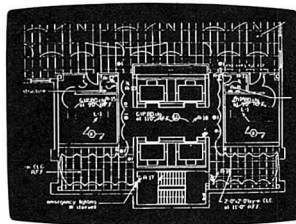
Why the most advanced CAD system for architects and building designers puts you on the edge.

ARRIS

And keeps you there.



Presentations - Dramatic visualizations help you win new business and communicate design ideas.



Production - Design automation, design refinement and 3-D capability increase your productivity.

Today, there is a revolutionary CAD system that puts you on the edge - the competitive edge. A CAD system that goes far beyond the ordinary, and gives you the edge in production, presentations, plus a lot more.

The name of this system is ARRIS™. And it is the remarkable system that will instantly show you why ordinary CAD is no longer enough for architecture and building design and management.

THE COMPETITIVE EDGE IN PRODUCTION.

With ARRIS, you don't have to make drawings line by line. Instead, you enter basic design parameters - and let the system do the rest of the work, *automatically*. So more work gets done, in less time.

THE COMPETITIVE EDGE IN PRESENTATIONS.

With ARRIS, you can create extraordinary design and marketing presentations that help you win more business. For example, ARRIS 3D modeling and rendering allows you and your clients to view your project from any perspective, at any angle, at any time of night or day. And to "walk through" rooms as if they really existed.

PLUS.

ARRIS allows your project teams to share data, drawings and systems - so they can work on entire projects, not just single drawings. Plus, ARRIS will grow as you grow, so you keep your competitive edge.

So be sure to call today for our *free* ARRIS demonstration. We're your ARRIS Power Dealer - and we can show you how ARRIS provides extraordinary CAD capabilities. And we can also provide you with the very best in training, service, and support. Call now to get the competitive edge.

ARRIS SALES & SUPPORT IS PROVIDED BY:

CADD MIDWEST CORP.

350 West Ontario, Suite 200
Chicago, IL 60610
988-9764

SERVICES.

- drafting
- digitizing
- plotting
- 3-D Modeling
- data base translating
- user training
- time sharing
- custom software
- system sales

EXPERIENCE.

In addition to prior design and project management experience, our staff of architecture, engineering and interiors professionals has worked with CADD for over 6 years per person on average. We provide CADD systems and services to design and engineering firms across the country. We know your business and production process.

SUPPORT.

CADD Midwest sells and supports a variety of CADD Systems. We prefer ARRIS, by Sigma Design because we find it to be friendly, fast, and intelligent. We stand behind ARRIS with confidence.

We invite your questions and inquiries.

Paul H. Lutton, AIA
President, CADD Midwest Corp.

**FOCUS
NOTEBOOK**

▼ Harold H. Sriver, AIA, and William C. Schuster, AIA, have joined the Chicago office of Hansen Lind Meyer. Sriver, a project director, and Schuster, who will be director of marketing, have also been named senior associates. Sriver has been manager, Region II Engineering Center of Venture Stores, Inc. in Oak Brook since 1986. Schuster had been director of Healthcare Marketing for O'Donnell Wicklund Pigozzi & Peterson since 1986 and prior to that was director of marketing for HLM's Iowa City office.

▼ Wallace Bowling Architects, professional services in architecture, planning, interior design, has announced their new office location at 4 E. Ohio St., Studio 7, Chicago 60611. The phone number is 337-5252.

▼ The Board of Directors of ISD Incorporated has announced the election of Lynn Olechnowicz, AIA, Ben Orman, and Atik Rahman to the position of Associate in the firm.

▼ Professional Affiliate member Michael Bordenaro has been made an Associate Editor with *Building Design & Construction* magazine. Bordenaro was formerly with Rosenzweig Professional Services Marketing.

▼ The Illinois Chapter of the American Society of Heating, Refrigerating and Air Conditioning Engineers (ASHRAE) has announced 1988 ASHRAE Energy Awards winners. The awards recognize designers of heating, ventilating and air conditioning systems for outstanding achievement in energy design and performance. Criteria for judging included energy efficiency, actual energy usage, innovation, application, cost effectiveness, and use of renewable resources. The following projects and designers won first place awards: Nielsen Plaza, Grumman/Butkus Associates; Prairie Shores Apartments, Arrowhead Environmental Controls, Inc.; A.B. Dick Company, Michael J. Durko, P.E.; Continental Bank, Continental Bank Property Ser-

vices; Orchard Point Office Center, Opus North Corporation. The following projects and designers won Energy Achievement Awards: Chicago Place, Arlington Park Race Track, and 600 N. Lake Shore Drive, by Skidmore, Owings & Merrill; Illinois Masonic Medical Center, Resurrection Hospital, and Thorek Hospital, designed by Johnson Controls, Inc.; Miami Beach Convention Center and Northwestern University Research Laboratory, by A. Epstein & Sons, Inc.; St. Joseph Hospital, by Grumman/Butkus Associates; Northern Trust Bank Canal Center, by Eckenhoff Saunders Architects; Northfield Office Complex, Kraft, Inc., by Perkins & Will; Interstate Brands Bakery, by Perennial Energy; Northern Illinois Gas, by Holabird & Root; Ingersoll Machine Company, by Ballard Engineering; Illinois College of Optometry, by Wallace-Migdal & Associates. The awards were presented during a special ceremony at the annual Energy Awards Luncheon in December.

Group One Design, a joint-venture between the firms of Perkins & Will, Heard & Associates, Inc., and Consoer Townsend & Associates, Inc., has been retained by the Department of Aviation to provide architecture, engineering, interior architecture, and planning services for Terminal 5, the Permanent Terminal at O'Hare International Airport. Terminal 5 is one of two major projects remaining in the \$2-billion, 10-year O'Hare Development Program (ODP).

Design for the 827,000-square-foot-terminal building, which began in early October, will include 18 wide-body aircraft parking gates, passenger concourse areas, and facilities for Federal Inspection Services, individual airlines, and airport support. An Automated Guideway Transit System will provide efficient transportation from the new International Terminal to remote parking facilities, rental car lots, and O'Hare's domestic terminals. **Ralph E. Johnson**, AIA, of Perkins & Will, who will serve as design principal for the project, was recently selected by *Fortune* magazine as one of seven premier "Architects for the 1990s" and was featured in *Esquire* magazine's "Register" for outstanding achievement in the field of architecture. **James M. Stevenson**, AIA, managing principal for the project and Perkins & Will's director of Aviation Design Services, recently led the supervising consulting effort for the ODP. Other key team members include **James Economos**, AIA, Group One Design's ►

Construction Law
contracts, litigation, arbitration

Real Estate Law
residential, commercial, syndications

**Law Office of
Werner Sabo**

8 S. Michigan, Suite 1306
Chicago, IL 60603


332-2010

312/
787•
4014



K

KOZAN STUDIOS
TROMPE L'OEIL/FAUX FINISHES
CALL FOR BROCHURE



**RAMM
BRICK, INC.**

INDUSTRIAL RESIDENTIAL COMMERCIAL
INSTITUTIONAL PAVING MUNICIPAL

FOR EXCELLENCE IN BRICK • SINCE 1914

312/352-5500 223 Tilden Ave., P.O. Box 9, LaGrange, IL 60525

ARCHITECTS - ENGINEERS

Announcing

ELECTROSTATIC PLOTTING SERVICES
COLOR and BLACK AND WHITE

As an added service to the design professional, we have installed electrostatic CADD plotting equipment at our Wabash Avenue location.

- End plotting bottlenecks—high capacity
- Attractive pricing, quantity discounts
- 400 dots per inch
- Output to bond, vellum and mylar
- AutoCAD, VersaCAD, Intergraph, and most other CADD software

SAVE TIME—SAVE MONEY

Other Services... Since 1915 Complete Reprographic Services

- Pin-register Overlay Drafting Repro Specialists
- Whiteprints • Sepias • Blueprints
- Specifications, Booklet, Report Xerox 9900® Duplicating
- Offset Printing
- Reproduced Tracings, Fixed Line, Washoff
- Electrostatic Plotting
- PMT® Stats
- Huey Diazo Papers & Films
- 2080 Xerox® Copies
- Huey Tracing Papers & Films
- Shacoh Copies
- Huey Deluxe Drafting Tables

CALL FOR MORE INFORMATION

HUEY 

MAIN PLANT **782-2226**
19 S. WABASH

RIVER NORTH **644-2264**
435 N. LaSALLE

PROVIDING REPROGRAPHIC SERVICES TO CHICAGO ARCHITECTS AND ENGINEERS SINCE 1915

AVA INSURANCE AGENCY, INC.

INSURANCE FOR PROFESSIONALS

20 N. Wacker Drive, Suite 2600
Chicago, Illinois 60606
(312) 236-3571

Insurance Specialists
for
Architects and Engineers

project manager, and Carol Schmidt, AIA, of Heard & Associates, project coordinator for the People Mover Station. Frederick Antonelli of Consoer Townsend is project coordinator for the Landside and Airside work.

For the second year in a row, the Women's Architectural League completely sold out their "Season's Greetings" card, and this year there were 2,000 more to sell. The card, which features a detail from a design by Purcel, Feick and Elmslie is available without the holiday greeting, so that it may be used as a general greeting card. You may call Mary Casserly at 445-4726.

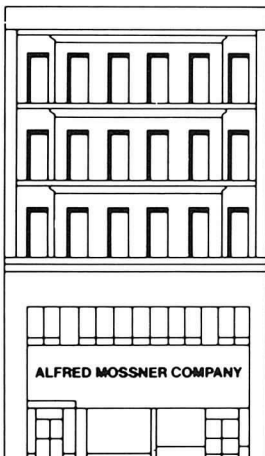
Chicago Women in Architecture will feature Adele Naude Santos as guest speaker at CWA's Annual Sunday Brunch, which will be held at 11:00 a.m. at the Hotel Morton, 538 S. Dearborn, in the Burnham Room. The Prairie restaurant will cater the event. Adele Naude Santos is the former chairperson of the Graduate Department of Architecture at the University of Pennsylvania, currently principal of her own firm in Philadelphia. In 1988 she won the limited competition for affordable multi-family housing in Hollywood, California. Her work includes low-cost housing in Africa and mass housing projects in Tokyo, Japan. For reservations and more information, contact Beth Alson at 263-6990. CWA has a free job placement service available for use by Chicago area architectural and interior design firms. CWA members available for employment are on file with the service. Employers seeking new employees may contact Dot Probst at 222-1300 for information on available candidates.

The 1989 AIA Architectural Photography Competition is open to all individual AIA members, Associate members of the AIA, Student members of AIAS and Professional Affiliate members of AIA components, in good standing, except professional photographers who are members of the AIA and/or any of its components. \$2,500 in cash prizes will be awarded: First Prize, \$1,000; Second Prize, \$700; Third Prize, \$300; Bethune Award (for best image of an architectural subject in the United States), \$500. First, second, and third place winners will be published in *Architecture* and images for the 1991 *AIA Engagement Calendar* will be selected from the entries. Jurors are E. Fay Jones, FAIA; John Dixon, FAIA, editor, *Progressive Architecture*; and Nor-

Mossner

THE REPRODUCTION PEOPLE • LARGEST IN THE MIDWEST

MOSSNER BUILDING



137 North Wabash

AT RANDOLPH
(ACROSS FROM
MARSHALL FIELD'S)
CHICAGO, IL 60602

Telephone:
372-8600

**MORE THAN 50
MESSENGERS**

Fast one-source service for all of your reproduction requirements

PHOTOMECHANICAL SERVICES

- STAR-REPRO® Drafting Systems—for pin-bar, overlay and team drafting
- Precision camera work up to 48 in. by 72 in.; enlargements and reduction to 10 times
- Expert negative retouching
- Contact prints
- Autopositives
- Washoff tracings
- Printed circuit assembly boards, master plate drawings
- Scissor drafting
- Photo drafting
- PencilTone® reproductions
- Restorations
- Xerox 1860 translucent vellum and Mylar intermediates, paper prints and offset masters
- Xerox 600 enlargements from 35mm microfilm
- Xerox 2080 prints—reduced or enlarged

BLUE PRINTS, WHITE PRINTS, SEPIA INTERMEDIATES ON PAPER OR MYLAR SPECIALTY PRINTS FOR PRESENTATIONS

PHOTOSTATS AND XEROX PRINTS

OFFSET PRINTING

- Specification sheets and booklets
- Sales literature
- Stationery and forms
- MAGI-COPY® fast printing service—ideal for architectural and engineering specifications

105mm and 35mm MICROFILM SERVICE DRAFTING SUPPLIES AND FURNITURE

We do it all under one roof.

ALFRED MOSSNER COMPANY • FOR MORE THAN 60 YEARS

man McGraph, architectural photographer. Entries must be received at the St. Louis Chapter by March 1. For complete information, call SL/AIA, 314/621-3484.

▼ *Architectural Record* announces its second annual **In the Public Interest** awards program, aimed at encouraging and recognizing excellence in the design and planning for public architecture. The building type for 1989 is Recreational Buildings, including but not necessarily limited to: park buildings, public playgrounds, community centers, public service organizations, (YMCA's, boys and girls clubs), public gymnasiums, public swimming pools, arenas and stadiums. All entries must be new or remodeled construction designed by registered architects and completed since January 1, 1986. Work previously published in other national design publications will be considered. There are no entry fees or forms. All entries must be postmarked no later than May 1. Winning entries will be featured in November 1989 issue of *Architectural Record*. For additional information, call Paul Sachner at 212/512-3088.

▼ **CAF Exhibitions:** Continuing at the ArchiCenter through February 25 is "Celebrating Chicago's Religious Architecture," which features photographs and accompanying essays highlighting the exterior and interior architecture of approximately 25 churches and temples in Chicago. A team of three photographers: Gregory Murphy, Kevin O. Mooney, and Kenneth Burkhardt, and two essayists: journalist Sallyann Jacobson and social historian Ellen Skerrett, present a selection of dramatically distinct visual and written perspectives on the heritage of religious buildings in Chicago.

"Houses from the Eighties or Another Look at the Little House" will open at the ArchiCenter on March 14 and run through May 26. Growing out of a design competition sponsored by the Des Moines Architects Council, the exhibition provokes commentary on the state of the small American house. It features 20 winners of the Iowa competition plus the work of 30 Chicago designers and architects invited to submit entries. Entrants were asked to design a house for four, (perhaps the Cleavers), which provides adequate space for eating, sleeping, bathing, and any other functions the designer deems desirable in 1,500 square feet or less. Each house is to occupy a flat, 60-foot ►



DON'T PANIC!

Are you in need of top quality, prescreened design and production assistance? Call **ARCHITEMPS, INC.**—your source for temporary architectural, interior design and facility management personnel. In your office, our skilled professionals can provide a full range of services enabling you to:

- staff-up quickly as the need arises
- eliminate deadline panic
- reduce overhead due to cyclical hiring and layoff
- maintain the competitive edge crucial to the well-being of your business

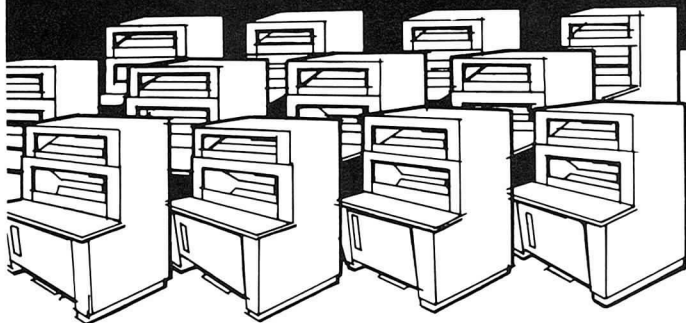
For more information about **ARCHITEMPS**, call Charles Poskonka or Alice Rudolph at 312.649.0914.

ARCHITEMPS, INC.
206 West Division Street
Chicago, Illinois 60610.1821
312.649.0914

ARCHITEMPS, INC., a Chicago based corporation now serving the Midwest and Southwest.

© ARCHITEMPS, INC., 1988

**When you need 1
or 1,000,000 blue
prints, or any other
quantity...**



**MOSSNER'S 15 State-of-the-Art
Blue Print-White Print Machines
at One Location Produce Them
Fast, Fast, Fast**

**NO JOB TOO LARGE
NO JOB TOO SMALL**

**BLUE LINE, BLACK LINE,
BLUE PRINTS AND
SEPIA REPRODUCIBLES**

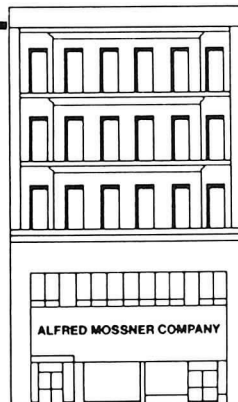
Speed, quality and dependability... these characterize Mossner's "blue print" service since 1922.

For more than 60 years, Mossner has provided the latest and fastest state-of-the-art, high-production equipment.

More than 50 messengers plus radio-dispatched pick-up and delivery vehicles assure the fastest possible service, including dependable print distribution to consultants, contractors and clients.

And that goes for *any* quantity you may require.

Mossner 372-8600
THE REPRODUCTION PEOPLE • LARGEST IN THE MIDWEST
Mossner Building • 137 North Wabash at Randolph (across from Marshall Field's), Chicago, IL 60602



Fast one-source service for all of your reproduction requirements

PHOTOMECHANICAL SERVICES

- STAR-REPRO® Drafting Systems — for pin-bar, overlay and team drafting
- Precision camera work up to 48 in. by 72 in.; enlargements and reduction to 10 times.
- Autopositives
- Scissor drafting
- Photo drafting
- PencilTone® reproductions
- Xerox 600 enlargements from 35mm microfilm
- Xerox 2080 and 1860 translucent vellum or Mylar intermediates, and paper prints - reduced or enlarged

OFFSET PRINTING

- Specification sheets and booklets
- MAGI-COPY® fast printing service — ideal for architectural and engineering specifications

**105mm and 35mm MICROFILM SERVICE
DRAFTING SUPPLIES AND FURNITURE**

**BLUE PRINTS,
WHITE PRINTS,
SEPIA INTERMEDIATES
ON PAPER OR MYLAR**

WE DO IT ALL UNDER ONE ROOF

by 100-foot lot bordered on three sides by identical lots. A \$500 first prize will be awarded. "Houses from the Eighties" was conceived to acquaint the public with "the art of architecture in its modest and most palpable form, and to provide a framework for designers within the Midwest to grapple with what is probably architecture's most heavily criticized genre," according to Paul Mankins, Project Planner.

▼
The Inter-Society Color Council Annual Meeting will be held at the Ambassador West Hotel April 9 - 12. The CCAIA is co-sponsoring the Tuesday program, "Color in Architecture," with two Chapter members participating. **Frank Heitzman, AIA**, will discuss color in architecture; **John Vinci, AIA**, will speak on the use of color in the work of Louis Sullivan and Sullivan's relationship to the Chicago School; William Kessler will speak on the importance of color. John Hutchings is scheduled to talk on "Color in Roman and Early Saxon Artifacts Used in Buildings." For full information contact the Inter-Society Color Council, Studio 321, Box 18, Route 1, Sperryville, Virginia 22740, 703/987-8386.

▼
Guided tours of the Farson-Mills House (Pleasant Home), 217 S. Home Ave. in Oak Park, are available every Saturday and Sunday from 2:00 to 3:30 p.m. This landmark Prairie Style mansion designed by George Maher in 1897 is an outstanding example of early modern rectilinear architecture. Admission is \$2 for adults; \$1 for seniors and children. As reported in the January *Focus*, four CCAIA members have been named to the recently formed 15-member task force, which is charged with determining how best to develop the house as a museum. For more information, call the Oak Park Visitors Center, 848-1500.

▼
Boston architect Jean Paul Carlhian, FAIA, a noted educator and principal in one of the country's oldest architecture firms, Shepley Bulfinch Richardson & Abbott, has been named recipient of the 1989 Edward C. Kemper Award, the AIA's highest service award. Carlhian, honored in recognition of more than 20 years service to the AIA and the profession, led the effort to save New York's Grand Central Station. He is responsible for creating the AIA's Twenty-Five Year Award, and the Architectural Critic Medal, which honors and fosters understanding writing by architecture critics.

DON'T FORGET TO ATTEND THE CCAIA INTERIOR DESIGN LICENSING FORUM

Wednesday, February 15

6:00 to 7:30 p.m.

Merchandise Mart Conference Center

\$3: AIA, Associate, Professional Affiliate, Student Members

\$5: Non-members

RSVP to CCAIA office by February 13 - 663-4111

What we can do will amaze you

At Foliage Design Systems, we know that plants are an essential part of any setting where people live, work or play.

No other interiorscaping company offers a longer list of quality foliage related services.

□ Our professional design consultants will save you time and money by tailoring an interiorscape to your environment's individual needs.

□ We expertly install and regularly schedule maintenance by experienced horticulturists to keep your interiorscape looking healthy and attractive all year long.

□ We provide colorful flowering plants that include a guaranteed regular replacement service.

□ Our silk, dried and artificial foliage is so lifelike, you'll have to touch them to make sure they're not growing.

Wedding ceremonies and receptions, grand openings, conventions, parties and Bar Mitzvahs...no occasion is complete without our short term plant rentals.

For over 16 years, Foliage Design Systems has been the one source for all of your interiorscaping needs. So, call the office nearest you today...We think what we do will amaze you.

Not all services available from all offices.

312-620-4808



Foliage Design Systems

Nature indoors... Nature outside.

Member Florida Nurseryman and Growers Association / Associated Landscape Contractors of America

Board of Directors

PRESIDENT
Frank E. Heitzman, AIA

FIRST VICE PRESIDENT
Steven F. Weiss, AIA

VICE PRESIDENTS
Margaret McCurry, AIA
Werner Sabo, AIA
John Syvertsen, AIA

SECRETARY
Leonard A. Peterson, AIA

TREASURER
Sherwin Braun, AIA

DIRECTORS - Through 1989
James Stefanski, AIA
John Tomassi, AIA

DIRECTORS - Through 1990
Harry Hunderman, AIA
Anders Nereim, AIA

DIRECTORS - Through 1991
John H. Nelson, AIA
Thomas R. Welch, AIA

PAST PRESIDENT
Cynthia Weese, AIA

ASSOCIATE DIRECTOR
Jeanne Breslin

PROFESSIONAL AFFILIATE REPRESENTATIVE
Alice Sinkevitch

ILLINOIS COUNCIL DELEGATES
Jeffrey Conroy, FAIA (Through 12/90)
Robert Clough, AIA (Through 12/90)
Kristine Fallon, AIA (Through 12/89)
Lee Weintraub, AIA (Through 12/89)
Robert Robicsek, AIA (Through 12/89)

ILLINOIS COUNCIL ALTERNATES
Linda Searl, AIA
Michael Youngman, AIA
Jim Zahn, AIA

STUDENT AFFILIATE
Ken Colliander

Chicago Chapter Staff

EXECUTIVE DIRECTOR
Jane Lucas

FOCUS EDITOR/ADVERTISING SALES
Annette Kolasinski

PROGRAM COORDINATOR
Mary Beth Carroll

BUSINESS MANAGER/MEMBERSHIP DEVELOPMENT
Beverly Meland

MEMBERSHIP SERVICES PUBLIC INFORMATION
Sandra Lusars

DATA PROCESSING COORDINATOR
Cynthia Gordon

DOCUMENTS SALES
Betsy Kittle

CHICAGO CHAPTER

A M E R I C A N I N S T I T U T E O F A R C H I T E C T S

53 West Jackson
Suite 350
Chicago, Illinois 60604
312.663.4111

Second Class
Postage Paid
at Chicago, IL
