

CCCAIA FOCUS



The FOCUS (ISSN 0744-821X) is published monthly by the Chicago Chapter, AIA, 53 W. Jackson Boulevard, Suite 350, Chicago, Illinois 60604, as a benefit of membership.

Postmaster:
Send address changes to Chicago Chapter, AIA, 53 W. Jackson Boulevard, Suite 350, Chicago, Illinois 60604.

Survival Techniques

Four informal "round table" sessions are planned for interested members to discuss and identify the concerns regarding the personal dynamics behind the building of architecture and the possible techniques for constructively handling them. The initial meeting will be a brainstorming session leading to more structured discussions.

Some of the issues to be addressed are the architect/contractor communication, credibility with client and/or office superiors, positive assertiveness vs "bluffing," and other issues concerning women in architecture. The sessions, to which **all** members are invited, will be jointly organized by Julie Hacker, Kathryn Quinn, Linda Searl, and Cynthia Weese.

"Survival Techniques" will be held on Saturday, February 6 and 27 and Saturday March 19 and 26, at noon, in the CCAIA Board Room.

Linda Searl

Interior Places

The Interior Architecture Committee will offer the first of its series of three programs featuring exciting new interior work by Chicago designers. Each program will take shape as a lecture and tour beginning at 6 p.m.

On February 9, the Chicago offices of Coopers and Lybrand will be featured. Attendance is limited for this series, so you should contact the CCAIA office with your intent.

► **Look** for the 1988 Interior Architecture Awards program brochure. **Mark** this down: intent to enter - March 11; entries due - April 9.

The Architect/Client Relationship

The single most important aspect of the project, beyond providing an appropriate design, the technical expertise to carry out that design and producing the project on time and within the established budget, is the architect's ability to properly manage the relationship with the client.

The next Office Practice Committee forum will focus on two aspects of this issue. First, what are the different types of client, and what is the proper response by the architect to each type? Second, how can the architect/client relationship be used to strengthen an architect's practice?

If you have ever had a relationship with a client "go sour" and have wondered, "Where did I lose control of the situation, and how could I have managed it differently?" you will want to attend this forum.

The Office Practice Committee invites you to join us and share your experiences and ideas on Wednesday, February 10, from 5:30 to 7:30 p.m., in the CCAIA Board Room.

Steven W. Elisco, AIA

Down by the Riverside

The Planning and Urban Development Committee invites you to join them for dinner with some of Chicago's leading developers who have sponsored projects along the Chicago River. On February 9, at 5:30 p.m., interested members will convene at the Tavern Club, 333 N. Michigan, 26th floor, the Edgar Miller Room, for cocktails, dinner, and a round table discussion.

Our distinguished guests will include Steve Bell, BCE Development Properties, Inc.; John Buck, the John Buck Company; Robert Meers, Broadacre Management Company; and James West, Equitable Real Estate. Please join us for what we guarantee will be an enjoyable and stimulating eve-

Cover Photo: Townhouse remodeling, Near North, Chicago. Quinn and Searl, Architects. Linda Searl is one of four young professionals scheduled to speak at the February Chapter Meeting, "Design Entrepreneurs," a forum sponsored by the Young Architects Committee. The forum is scheduled for February 18, 5:45 p.m., in the ArchiCenter Gallery space. See page 3.
Cover Photo: Jamie Padgett, Karant & Associates, Inc.

ning. The Developers Dinner is at \$40 per person.

On Thursday, February 25, the committee will sponsor a design critique of the Chicago River Master Plan being prepared by Boyer, Hoppe & Associates in conjunction with Trkla, Pettigrew, Payne & Allen, Inc.

This event, which will be held at the North Pier Terminal Project, will give members a chance to review the work in progress and offer criticism and input into this ongoing study. This is a great opportunity to take a meaningful part in the evolution of planning for the River.

We will convene at the North Pier Terminal, 401 E. Illinois Ave., from 4 p.m. to 7 p.m., for a presentation by the city and the Department of Planning and its consultants. Time will be allocated for critique and input. We will wrap up the evening with cocktails. Reservations are \$5 per person.

To make reservations for the above two programs, send your check, payable to the Chicago Chapter, AIA, to the attention of Cynthia Gordon.

John Nelson, AIA

North Pier Terminal. Architect: Booth/Hansen & Associates. Photo of rendering, courtesy Broadacre Development Company. Project is object of and site of Planning & Urban Development Committee February programs.



Design Entrepreneurs Forum

FEBRUARY CHAPTER PROGRAM

On Thursday, February 18, at 5:45 p.m. in the ArchiCenter, *Inland Architect* Editor, Cynthia Davidson-Powers, will lead the principals of small, relatively new architectural firms in discussion of such questions as: How did you reach the decision to open your own firm? How did you accomplish the establishment of your practice? What were the biggest difficulties and challenges you faced? What are the different approaches used when designing for your own firm as opposed to the design work performed when working for someone else?

Answering these questions will be Christopher Rudolph, principal, Christopher H. Rudolph Architect; Thomas Longhi, principal, Schema Design Group; Linda Searl, principal, Quinn and Searl; and John Syvertsen, principal, John Syvertsen Architect.

The cost to attend this program sponsored by the Young Architects Committee is \$5, members; \$7, non-members; \$3, students. More information? Call Mary Beth Carroll at the Chapter office; to RSVP, call Regina at 663-4111.



Chris Rudolph



Tom Longhi



John Syvertsen



Linda Searl

DESIGN ENTREPRENEURS

Restoration of Historic Roofing and Architectural Copperwork

The popularity of rehabilitation and restoration in recent years has led to a re-emergence of traditional roofing materials and techniques. Earl Gough, of Gough & Bros., a firm with a special interest and considerable experience in traditional roofing techniques, will share his experience with the restoration of historic roofing and architectural copperwork.

Mr. Gough is currently completing the restoration of the ornamental copperwork at the Charnley House and has worked on the Madlener House (Graham Foundation), the Woodstock Opera House, the Chicago Golf Club, the Village of Hinsdale Memorial Building, and many other historic structures. He will discuss trouble-shooting for historic roofs, repair materials and techniques, slate and tile roofing, design, detailing, and specifying the repair of traditional roofing.

Join us for this presentation at noon, on February 18, in the CCAIA Board Room.

Harry Hunderman, AIA

Perspective Sketching for Design and Presentation

On Saturday, February 20, 1 p.m., at IIT's Crown Hall, 3360 S. State St., the Student Affairs Committee will sponsor an afternoon session on techniques for perspective sketching to facilitate design and improve presentation drawings. This workshop, conducted by Rael Slutsky, will be offered in two parts:

Slide Presentation - the step by step process and techniques used in perspective sketching with samples of completed work;

Sketching Exercise - students will be provided with a perspective layout of a building from which they will prepare a new sketch. The sketches will be presented and reviewed.

Mr. Slutsky is a registered architect who received his B.Arch. degree from the University of Illinois at Champaign-Urbana. He opened his office, Rael D. Slutsky & Associates, in 1977, and in 1980 shifted his practice exclusively to architectural illustration, working with clients nationwide. Some Chicago projects he has rendered include the new United Airline Terminal at O'Hare, both 900 N. Michigan Ave. and 700 N. Michigan Ave. multi-use complexes under construction, the new Chicago Historical Society addition, and One Financial Place/Midwest Stock Exchange.

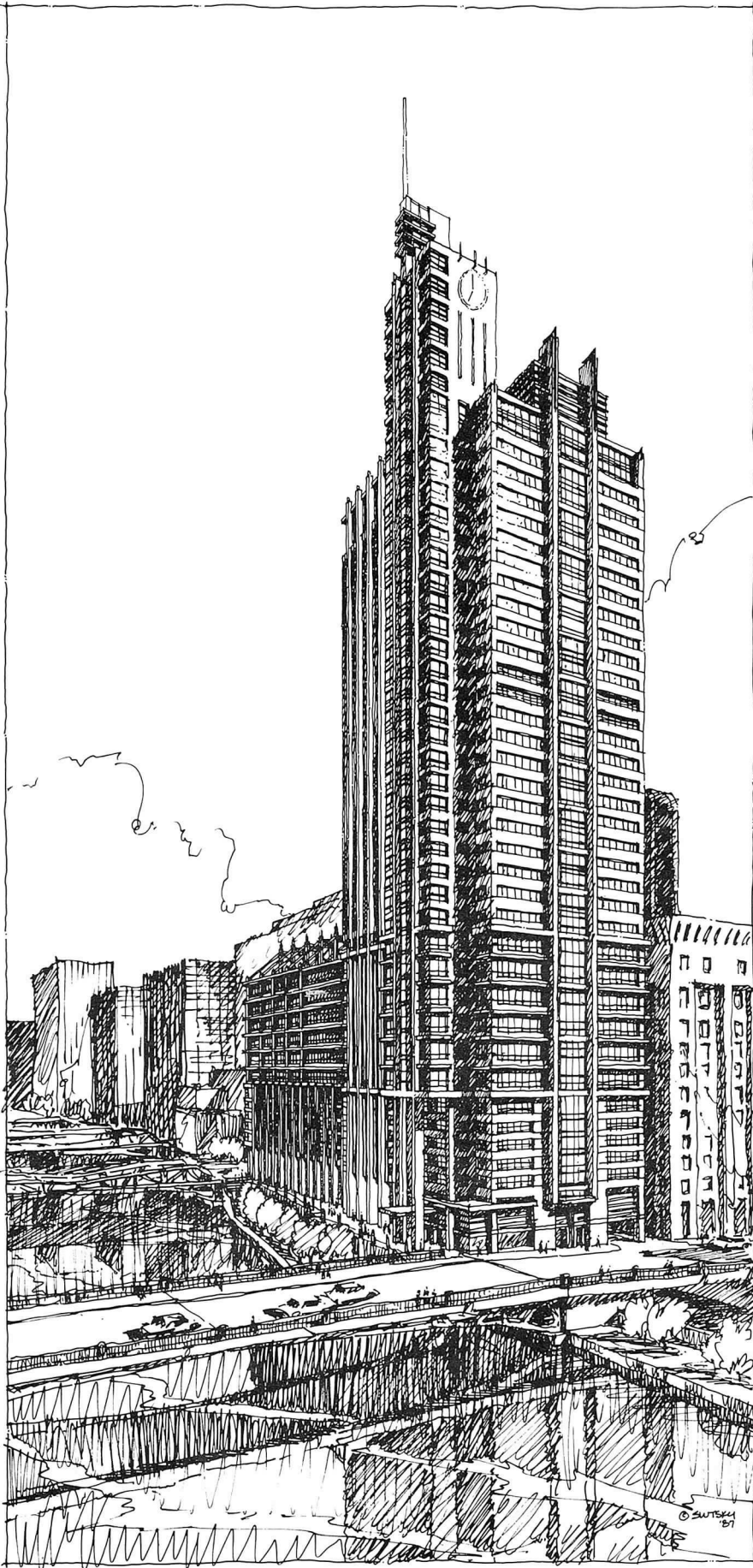
To participate, the student should have the ability to construct perspective drawings. Priority will be given to Student Affiliate members of the CCAIA, to undergraduate students who have completed more than two years of design studio, and graduate students. Participants will need to bring black writing instruments, such as a felt tip pen, technical pen, or graphite pencil. All other materials will be provided.

There is no cost for the slide presentation. Participation in the sketching exercise is \$2 for members, \$5 for non-members. Students wishing to become CCAIA members can apply \$3 toward the membership fee.

All students are encouraged to attend the slide presentation. However, participation in the sketching exercise will be limited to 30 students.

Evelyn Alford

100 N. Riverside. Architect: Perkins & Will.
Rendering: Rael Slutsky.



Emerging Trends in Real Estate

Experts representing the broad facets of the real estate industry will get together on Wednesday, February 17 to present an overview of the past, present, and future trends in real estate.

Appearing at 5-7:30 p.m. in the 2nd Floor Conference Room at the Merchandise Mart are Mary Decker, Metropolitan Planning Council; Peter Haverkamp, Homart Development Co.; Andrew Prodanovic, Real Estate Research Corp.; Thomas Rossiter, The Austin Company; David Schwartz, First Chicago Corporation. Moderator for the panel will be Susan Dee, of the JMB Realty Corp.

The cost to attend is \$5 and includes wine and light snacks after the program. Your check should be sent to the CCAIA office, and made payable to the Chicago Chapter, AIA.

Members of the Real Estate Steering Committee are: George Abert, AIA; Laurence Abstader, AIA; John Blair, AIA; Jerrold Brim, AIA; Susan Dee; Patric Greene, AIA; Richard Hayes, AIA; Garo Kholamian, AIA; David Lopper; David Marienthal, AIA; Thomas Prairie, AIA; Werner Sabo, AIA; Paul Schwab, AIA; Adelaide Thulin.

How's the Acoustics?

Ever build a building and find out that your "quiet" room is anything but quiet?

Acoustically-successful projects are not fortuitous accidents. They are the result of proper, systematic planning from the very onset of the project. Every decision made during the design process can have a great effect on the success or failure of its acoustical qualities. Environmental, architectural, and mechanical decision are all acoustical decisions in one way or another.

We invite all those interested to bring your lunch and join the Architects in Government, Industry & Education Committee on February 19 in the AIA Board Room for this noon-time program, to be presented by Yerges Acoustical Consultants.

James Gimpel, AIA

Selling Skills Seminar Repeated

For those of you who missed the November Steelcase Presentation Skills seminar, you have another opportunity to participate in this popular program. The CCAIA Interior Architecture Committee and Steelcase are once again co-sponsoring a "Presentation Skills for Design Professionals" seminar.

The seminar will be offered twice: Friday, February 19 and Saturday, February 20. Each session will be held from 8 a.m. to 4:30 p.m. at the Steelcase Showroom, Suite 1118, in the Merchandise Mart.

The objective of the seminar is to help participants gain a better awareness of the sales process and to suggest ways of dealing with many different types of people through successful presentations.

To afford maximum benefit, class size will be restricted to 15 people for each session. Because of the reservation overflow of the last seminar, it is recommended that people interested in participating send in their reservation form as soon as possible. No reservations will be taken by phone.

The cost for the day-long program is \$35 for CCAIA members and \$45 for non-members. The registration fee includes all course hand-out materials, continental breakfast, and lunch.

Follow-Up to Charrette for Homeless

On January 14, design solutions for sheltering the homeless, executed during the November Shelter Charrette, were presented for review and comment to city departments and to the Mayor's task force on the homeless. City officials from the Mayor's office gathered on January 26 to view the solutions and hear a synopsis of each by the design groups, whose work on behalf of the homeless will be joined in an exhibit of workshops from across the country.

Hands-on Computer Seminar

The 1988 Hands-On Computer Series, sponsored by the CCAIA Computer Committee, is now open for registration. Classes will be held on Tuesday evenings, from 6:00 to 8:30, on April 5, 12, 19, 26, and May 3.

This year, the series will focus on how the various systems used by a typical firm can be used both independently and together. Class exercises will include spreadsheet, word-processing, database, and CADD systems. A plotter, laser printer, and dot matrix printer will be available for output.

As always, participants will have the opportunity to work the examples themselves at a computer and discuss the implications of each class topic with knowledgeable tutors. The final session will be a panel discussion by new and experienced computer users, and we anticipate the usual spirited audience participation.

As a special bonus this year, those who register before March 15 will receive an exhibit pass and a free pass for two seminars at the A/E/C Systems conference, May 2 - 5, at McCormick Place. Seminars include talks and panel discussions on topics such as making more efficient use of a CADD system, staff training methods, and marketing strategies -- I think they're quite useful.

Please register using the form below. Non-members may apply a large part of the course fee toward the cost of membership. Interested student members should inquire at the Chapter office about course rates.

Space is limited to thirty-six participants, so register early.

Jeanne Breslin
Chairperson, CCAIA Computer
Committee

NAME: _____

FIRM: _____

ADDRESS: _____

PHONE: _____

MEMBER (\$125): _____

NON-MEMBER (\$230): _____ (\$125 may be applied to cost of membership)

Return to CCAIA, 53 W. Jackson, Suite 350, Chicago, IL 60604.

Chapter Forms Liaison Committee to City's Planning Department

On December 15, 1987, at Planning Commissioner Elizabeth Hollander's invitation, a group of CCAIA members, led by Cynthia Weese, attended a meeting of the Department of Planning at City Hall. Ray Griskelis, Frank Heitzman, Leonard Kutyla, John Nelson, and Wayne Tjaden met with the Department of Planning staff group headed by Dave Mosena. Dave and the DOP staff members Marcel Acosta, Maria Choca, Philip Levin, Stephen Roman, and Broucka Sarnoff outlined areas in which the DOP and the city feels the input of the Chicago AIA would benefit their performance.

Topics such as the Neighborhood Partnership Program, the Linked Development Program, the Right of Way Guidelines, and the Zoning Ordinances were listed as areas in which concerned CCAIA members could contribute in the capacity of a review panel, critique group, or advisory board. The various topic areas were divided between the Chicago AIA members attending and the respective DOP personnel heading these programs. There will be further discussion to determine what specific role the Chapter can play in this process.

The Chapter's liaison committee to the DOP will meet again in approximately three months, having at that time established the working relationship permitting an active advisory role for the Chapter.

**John H. Nelson, AIA
Chairman, Planning and Urban
Development Committee**

Unity Temple Grants Preservation Easement to LPCI

Early in January the Landmarks Preservation Council of Illinois (LPCI) and the Unitarian Universalist Church of Oak Park signed an historic agreement that will preserve and protect Unity Temple. The church voted unanimously to donate a preservation easement on the building to LPCI. The easement, the first ever carried out by a religious organization in the United States, will protect the exterior and historic interior spaces of Unity Temple in perpetuity and provides guidelines for future restoration work.

The preservation of significant religious properties has been a source of controversy around the U.S. for several years. Challenges to the constitutionality of designating a religious property have arisen in N.Y.C. and Chicago. Other cities, such as Boston, Buffalo, and Philadelphia, have been faced with protracted battles over the preservation of historic churches. Recent announcements by the Roman Catholic Archdiocese of Chicago that several historic churches will be razed have only highlighted the problem. Preservation groups throughout the country are attempting to devise methods that will assist in the preservation of these important community resources.

"This easement...not only insures that Unity Temple will be preserved," said Carol Wyant, executive director of LPCI, "but also provides a model for cooperation between preservation organizations and religious bodies on the sensitive issue of preservation of religious properties."

A preservation easement, a legal agreement between a preservation organization and a property owner, allows the preservation organization to monitor and review the building to insure that its architectural integrity is maintained. All changes to protected elements of the building must be

reviewed and approved by the preservation organization. Eligible property owners may receive a substantial income tax deduction, because the donation of a preservation easement is considered a non-cash, charitable contribution.

The placing of an easement on Unity Temple, designed by Frank Lloyd Wright in 1906, will legally require the congregation to maintain the building in its historic appearance to the extent possible, given the changes over the years.

The National Trust for Historic Preservation has agreed to accept the role of reverter, in the event that LPCI is no longer able to fulfill its obligations under the easement agreement.

Inspiration from Abroad

The 1988 Bright New City lecture series will examine successful, innovative, and unique redevelopment ideas applied in several foreign cities; an inspirational new way of looking at our landscapes; and the big business of industrial real estate developments.

Barcelona, Spain; Grandville Island, Vancouver, B.C.; the London docklands, and Chicago all have something in common - each is staying vital by seeking new looks, new developments, and aesthetic refurbishing.

"We believe Chicago can benefit from learning about development in other places," said Mary Wolkonsky, founder and chairman of The Bright New City.

Lectures will be held each Monday from March 14 through April 11 at 12:30 p.m. in the First Chicago Center auditorium at Dearborn and Madison. (Specific days and topics will be listed in March and April *Focus* Calendar.) The series is open to the public. Tickets for each lecture are \$5, or \$20 for the series, and will be available at the door.

The weekly lunchtime lectures will be followed by evening panel discussions with local leaders. That day's speaker will be featured. Dinner discussions will take place at The Casino, 195 E. Delaware, from 5:30 to 9 p.m. Tickets for the panel discussions are \$30, but reservations are limited to approximately 150 people. Advance tickets for lectures and dinner discussions can be ordered by calling 996-2006.

What Could Have Been

Why did plans by some of the most prominent international architects remain only unbuilt images and dreams in the minds of their creators? Curator Peter Jay Zweig hopes visitors to "What Could Have Been: Unbuilt Architecture of the 80's" will ask this question. Rather, by visiting the ArchiCenter Gallery before the show closes on March 5, you might be challenged to answer the question.

Architects were asked by the exhibition's organizers, Lorry Parks and Roberta Mathews of Grace Designs in Dallas, to select projects designed for a U.S. site and dating from after 1980, emphasizing "...these favorite structures must never have been built."

This show of "architects' unrealized dreams" is playful and dreamy. At once one is struck by the exhibition's dichotomy of images: primarily the projects are classical in nature or snappy inspirations from pop art. Here a dead warrior, there shiny, glazed tiles rising out of Manhattan; there the Beverly Hills Civic Center Theater, like a Holy City in itself, here Ettore Sottsass Snaporazz Restaurant, complete with story boards that suggest the activity in its core is directed by robots and enjoyed by spaceship passengers.

In December the Chicago Architecture Foundation sponsored a symposium that brought Franz Schulze, Michael Graves, Peter Ellis, Cynthia Weese, Larry Booth, Stuart Cohen, and Cynthia Davidson-Powers together in a panel. The symposium was offered in conjunction with "What Could Have Been..." and preceded the exhibition opening that evening.

Julie Hacker, reporting for the *Focus*, comments: "Perhaps the most interesting and volatile moment of the symposium came when Peter Ellis suggested that contemporary architecture like the other great architecture of this century, must acknowledge technological progress. Wincing, Graves stated emphatically that 'architecture has nothing to do with progress. Architecture does not progress toward a perfect end product as a goal. It is not goal oriented in the scientific, mathematical sense of the word, but rather principle oriented.'" According to Hacker, "as it stood, the symposium focused on a post-modern architecture of representational form-making and historical connections."

The Best Laid Plans

The Landmarks Preservation Council of Illinois has announced the annual 1988 lecture series focusing on the control and preservation of our built environment. The series will be held at the Traders Building, formerly the Fort Dearborn Hotel, located at 401 S. La-Salle St., in the Third Floor Atrium.

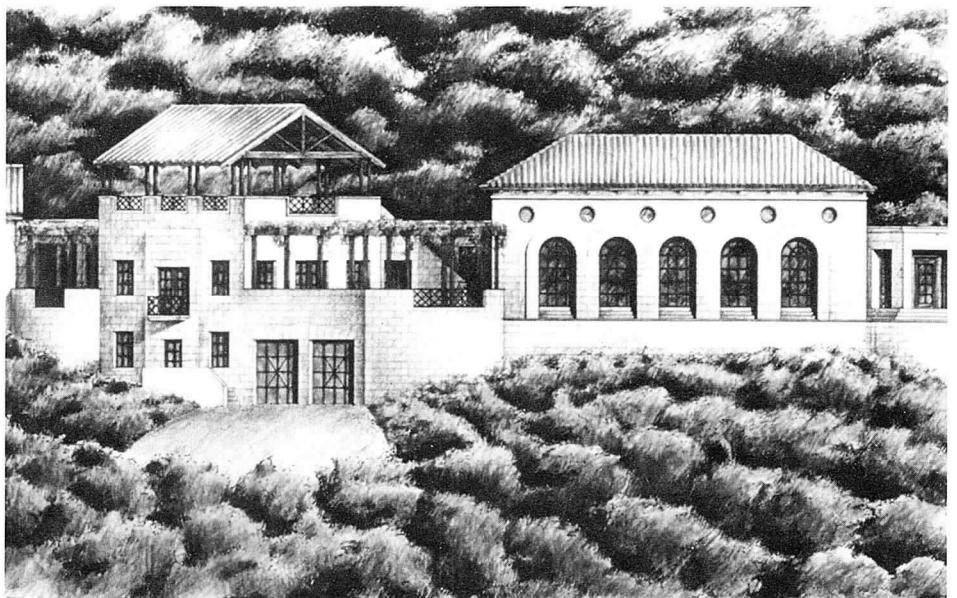
On Tuesday, February 2, Keith Sculle, Illinois Historic Preservation Agency, will center his talk on "Court House Squares: The Planned Center of Activity in 19th Century Illinois."

Gwen Sommers Yant, Evanston Preservation Commission, and Art Perez, resident of the Tri-Taylor Historic District, will look at urban and suburban neighborhoods and how each used historic preservation and political action to promote stability and orderly growth.

"Chicago's Boulevards: Their Brilliant Past and Bright Future" will be discussed by Maria Choca and Arthur Troczyk, City of Chicago Department of Planning. Attendees will learn about the city's comprehensive plans for its revival, including commercial, residential, industrial, and recreational opportunities in the neighborhoods along the way.

The lectures are \$4 for LPCI members, \$5 for non-members. Make checks payable to LPCI and send to LPCI at 53 W. Jackson Blvd., Chicago, IL 60604.

Lakeside House. Ink & prisma-color on vellum. Lent by architect Lawrence W. Speck, Austin Texas to "What Could Have Been" exhibition. Photo: courtesy Grace Designs, Inc.



Institute Mourns Loss of Jim Siena

AIA General Counsel Jim Siena, who had been undergoing treatment for cancer for the past year, died on Sunday, January 3. His death is a profound loss to the Institute and the professions of law and architecture.

During the more than three years he served the AIA, he became recognized as its senior statesman, whose wise counsel was always available to members and staff. He demonstrated sensitivity and concern for the health, safety, and welfare of the public in his guidance to the profession. His spearheading the recent development and implementation of the *AIA Code of Ethics and Professional Conduct* was a major significant accomplishment.

Dues Are Due Soon

March 31 is D-Day: the day when your National, Chapter, and State AIA Dues are to be paid. You should have received (initially) two invoices - from the National AIA and from the Chapter, which includes a line item for the Illinois Council dues. The Chapter will be mailing a second invoice as a reminder of local dues due. Watch for it, and stay with your organization.

Education: Provision for the Future

Education Task Force Established

The Chapter has set up a new Task Force on Education charged with initiating exploration of policy alternatives. The Chapter's relationship to the various levels of education in the city and its participation in existing programs such as Chicago Careers for Youth are among alternatives to be considered.

The Chicago Careers for Youth program was discussed by Frank Heitzman in the January *Focus*. The program is intended to bring seventh and eighth grade students in the city into contact with business men and women, exposing the student to a broader range of possible careers. One particular activity from this concept is having speakers representing each of 16 career clusters address the students, who will then select two areas of interest that may be investigated further through career exploration sessions. These sessions are expected to take place at McCormick Place in the Spring.

Other issues that will be discussed include possible development of local apprentice programs, mentor programs, and cooperative programs. A call for volunteers to the Architect/Student Liaison Program, under the coordination of the Student Affairs Committee, appeared in the December 1987 *Focus*. The "mentor program" provides a resource for answers to design practice questions and assistance in career guidance and employment opportunities for students enrolled in architectural programs at UIC, IIT, and the School of the Art Institute.

Recommendations for further study are expected before March of this year. Members of the task force are John Macsai, Margaret McCurry, Jack Naughton, John Syvertsen, Durwin Ursery, and Ben Weese.

**Jack Naughton, AIA
Task Force Chairman**

UIC to Host FORUM 1988

Over the 1987 Thanksgiving holiday weekend, a delegation of students from the University of Illinois at Chicago headed for the American Institute of Architecture Students (AIAS) annual convention, FORUM, with heightened excitement. This year's convention was hosted by the Boston Architectural Center, and a stiff competition for host school of the 1988 FORUM was promised.

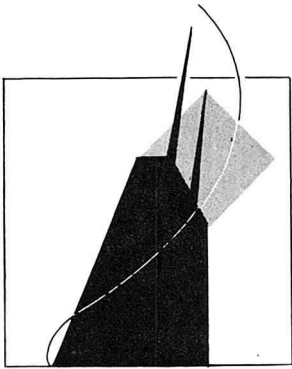
UIC had prepared an impressive bid package and would be vying for the honor of hosting this most important event of the AIAS along with Mississippi State University in Natchez, which proposed a FORUM aimed at an exploration of the vernacular environment, and the duo of SUNY Buffalo and Ryerson Institute of Technology in Toronto, whose delegates unveiled a proposal for a two-city international FORUM. After the trio of bid presentations, which many of those present prophesied would redefine the standard for quality in future bids, UIC emerged victorious.

A successful bid must impress both with an appropriate venue and an evocative theme and program. Providence and several generations of great Chicago architects having seen to the former requisite, the latter was achieved with considerably more effort, through a year-long planning process.

The theme of Chicago's FORUM '88 will be "Upward...Outward...:The Dynamics of a City and its Architecture," exploring the vital organism that is the American city, a phenomenon exemplified by no city if not by Chicago. Instrumental in this inquiry will be a critique of the ideals of "progress" and "growth" in their many manifestations and implications. We envision an agenda that will address ethical and sociological considerations, as well as the often more visible functional and aesthetic dimensions.

Attending this year's event in Boston and successfully campaigning for

Architectural education, for many architects, is one of the most stimulating, challenging, and formative periods of their entire careers. It is also among the most frustrating and memorable, a period of trial and error, of discovery and questioning. From *Architect? A Candid Guide to the Profession* by Roger K. Lewis.



Drawing of Hancock Building by UIC student Monika Greiff.

Getting Registered

The CCAIA and the University of Illinois at Chicago will co-sponsor the 1988 refresher course for the Architect's Licensing Examination. The curriculum is based upon the NCARB examination, structure, and outline. The course meets twice weekly: Monday and Thursday evenings for eleven weeks beginning March 21 and ending June 9.

The mock design exam will be incorporated into the course review this year and will be held on June 24. Because of the number of participants expected, the mock design exam portion will be held at two locations: The School of The Art Institute as well as another location to be named.

Courses offered in the review include: Pre-Design, 3 hrs.; Site Design, 6 hrs.; Building Design, 15 hrs.; Structural Design, 12 hrs.; Structural Design (Lateral Forces), 6 hrs.; Structural Design (Long Span), 6 hrs.; Mechanical Plumbing, Electrical, and Life Support Systems, 12 hrs.; Materials and Methods, 6 hrs.; Construction Documents and Services, 9 hrs.; and a 3-hour general course review and summary. Also included is the site design mock exam.

The cost for the course is \$240. Reservations should be made through UIC, Office of Conferences and Institutes, Mail Code 607, 912 S. Wood St., Chicago 60612. For more information, contact Sue Talbert, 996-8025.

No reservations will be made over the phone and course fees are non-refundable.

Scholarships: A Commitment to the Future

National Programs

The profession depends on well-prepared graduates who are able to meet the challenges of the future. Through its commitment to a strong scholarship program, the AIA assists undergraduates, graduates, and professionals wishing to continue their architectural education. The Institute considers this support an important investment in the future.

The 1988 Minority/Disadvantaged Scholarship Program for undergraduates entering architecture and the **AIA/AAF Scholarship Program for First Professional Degree Candidates** are well along, with winners in the Minority/Disadvantaged program being announced in late April.

Applications for the **AIA/AAF Scholarship Program for Advanced Study or Research Beyond the First Professional Degree** are to be postmarked no later than February 15. Candidates in this category must be students currently in the final year of a first professional degree program resulting in a B.Arch., M.Arch., or equivalent; practitioners, interns, educators, or others who have received a professional degree in architecture (B.Arch., M.Arch., or equivalent) who wish to pursue an advanced degree in architecture or a closely related field of study. Awards generally range from \$1,000 to \$2,500 and are based on the merits of the proposed program for study or research. Scholarships are awarded to individuals for a full academic year of study. Application forms are available by writing directly to Scholarship Programs; AIA; 1735 New York Ave., N.W.; Washington, D.C. 20006.

The AHA/AIA Fellowships in Health Facilities Design are available for study in any one of three settings:

Option A) graduate study for one academic year in any accredited school

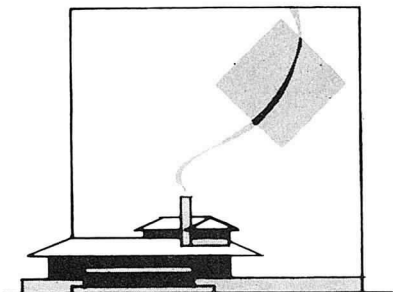
their school's bid were University of Illinois at Chicago students Peter Uliasz, John Trieger, Kevin Randich, Brett Hotze, Tim Jachna, Ken Colliander, and Tom Ciesielski as well as 1987 alumni Helen Tatos, Mike Kaiserauer, and Margaret Cervantes.

The UIC chapter of the AIAS gratefully acknowledges the invaluable assistance of our fellow chapters at the Illinois Institute of Technology, Southern Illinois University, and the University of Illinois at Champaign-Urbana, as well as the input of members of the Chicago architectural community. We will greatly appreciate, and indeed depend upon, the continued support that alone can ensure the realization of that which we have formulated.

The FORUM chairman is Ken Colliander who can be contacted through the School of Architecture of the University of Illinois at Chicago.

**Tim Jachna, President
AIAS, UIC**

Drawing of Robie House by UIC student Tim Jachna.



of architecture associated with a school of hospital administration or near hospital resources adequate to supplement prescribed graduate architecture courses in health facilities design;

Option B) independent graduate level study, research, or design in the health facilities field, to be completed within one calendar year;

Option C) travel with in-residence research at selected hospitals in a predetermined area, to be completed within one calendar year.

Applicants for the AHA/AIA Fellowship shall either have earned and received a professional degree from an accredited school of architecture or be in the final year of undergraduate work leading to such a degree. Applications are to be postmarked no later than March 15. For further details and application materials, write to The American Hospital Association, American Society for Hospital Engineering, 840 N. Lake Shore Dr., Chicago, IL 60611.

CCAIA Foundation Traveling Scholarship

Please be reminded that applications for the Chicago AIA Foundation Martin Roche Scholarships in Travel must be received in the Chapter office by 4 p.m., Monday, March 7.

Three \$500 scholarships will be awarded: one to a graduate of the architecture program at either IIT or UIC and one to an undergraduate in the architecture program at IIT and at UIC.

Applications may be obtained at either the Chapter office or the Department of Architecture at both schools.

Programs Abroad

Syracuse University is offering a Master of Architecture, Second Professional Degree program in Florence, Italy. The 30-credit-hour program is open to qualified students with a first professional Bachelor or Master of Architecture degree or its equivalent. History and theory are an integral part of the program.

The program begins with a three-week intensive preparatory session at Syracuse University, continues in Florence, and culminates in a final project review on the home campus. The Syracuse University Florence Center provides studios, lecture rooms, a gallery, and its own architecture library.

Applications are due on March 15. For academic information, contact:

Syracuse University School of Architecture, 103 Slocum Hall, Syracuse, N.Y. 13244-1250, telephone 315/423-2255.

Awards

Programs Honoring Excellence in Architectural Education Established

Working toward the goal of enhancing architectural education nationwide, the AIA has established two award programs recognizing excellence in architectural instruction and outstanding education in practice.

The "AIA Education Honors" acknowledge significant achievements in the formation, implementation, and outcome of architectural instruction. The program is open to any teaching faculty group at a school where a professional degree in architecture is offered. The Institute is looking for models of innovative architectural instruction, and their strategies, methods, and results. Submissions describing the programs are due at AIA headquarters, 1735 New York Ave., N.W., Washington, D.C. 20006, on February 15.

The "AIA Citations for Outstanding Education in Practice" recognize successful strategies for achieving excellence in architectural practice so that other firms may be encouraged to undertake similar programs. The program is open to AIA member firms of any size as well as architectural offices within corporations or government agencies that have developed imaginative approaches to professional development. The deadline for submissions is March 1.

For details on both programs, contact Joe Bilello, AIA, Institute education services center, 202/626-7358.

Exhibit

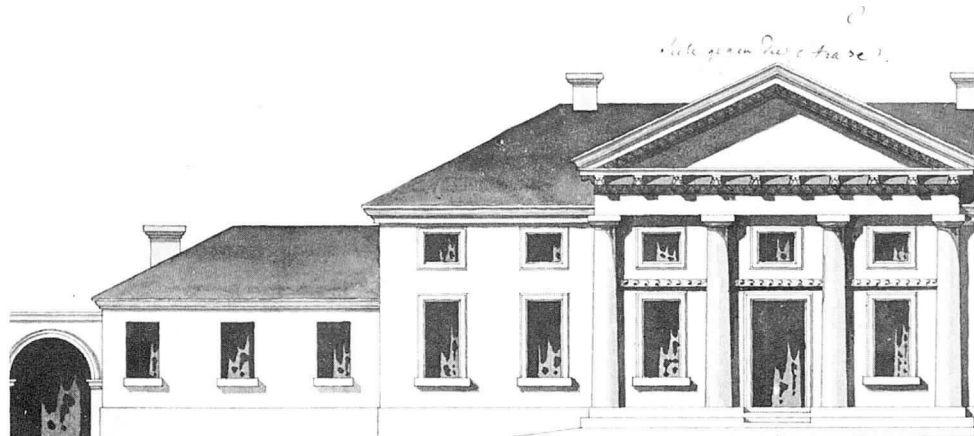
Friedrich Weinbrenner: Architect of Karlsruhe

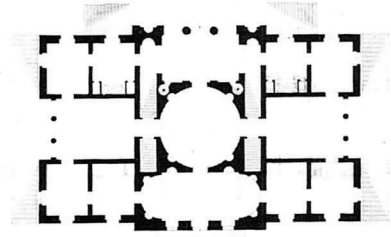
There is a hidden delight at the base of the main stairway of the Art Institute of Chicago. Apropos of this Focus issue on education, the travelling exhibit of theoretical and practical works by Friedrich Weinbrenner brings to light many of the same issues which confront today's educators and architects.

Weinbrenner (1766-1826) was the first important German architect of the nineteenth century. He is best known as the architect of the early German new-town of Karlsruhe, whose memorable plan is distinguished by its abstract radial geometry overlaid with circles, bars, and wedges. Less well known is the fact that Weinbrenner started the first national school of architecture in Germany.

He did this right at the time when Germany had discovered for herself the romantic power of the Greek ruins. Greek taste no longer had to be imported from Paris but could be tapped at its wellspring, closer to home. Weinbrenner was trained as a carpenter, and this influenced his mental reconstructions of the Greek ruins. His sensibility was thus closer to the developing nationalistic taste of Beidermeier Germany, and his influence can be seen in the by now familiar "high style" of K. F. Schinkel and, perhaps by extension, even in Mies van der Rohe. It is also possible here to see the legacy of French architects Bouleé and Ledoux,

Front elevation. Weinbrenner House, Friedrich Weinbrenner. Photo: courtesy The Art Institute of Chicago.





Karlsruhe, Villa & Estate, Margranne Christiane Louise. Friedrich Weinbrenner. Photo: courtesy The Art Institute of Chicago.

whose austere, abstract forms never really caught on in France.

The son of a carpenter, and a child of the Enlightenment, Weinbrenner created a "language" of architecture which bore both imprints. The exhibition, which will be at the Art Institute until February 28, is pulled from the Architectural Archives at the University of Pennsylvania. It is made up of drawings of constructed buildings, unconstructed projects, and plates from his rare *Architektonisches Lehrbuch*, which was the first architectural textbook in Germany.

The show is only up for a short time and will richly reward anyone who is interested in the development of a regional architecture or the education of an architect.

Anders Nereim, AIA

Dialogue on Education

Privileged Precedents

By Roberta Feldman and Sidney K. Robinson

The Focus is very grateful to Ms. Feldman and Mr. Robinson for making available the following abstract from a paper they are writing, to be submitted to an architectural publication.

The typical method of architectural education teaches by examples. When students are presented with an architectural problem, its relation to a typology is made explicit and appropriate precedents are set forth for analysis and guidance. Such a method is based on the assumption that principles represented as the "content" of the exemplars are carried by the vehicle of their form.

The rationale for this method is based on the rightness of the examples codified and ranked by received architectural wisdom. The work produced by this method looks like "architecture." The satisfaction felt when the new architectural product lines up with a familiar model is shared by students and teachers alike. Because the students' work fits the model, the terms for critical evaluation are clear and immediately applicable. The structure of criticism is reinforced by the demand for immediacy in the realms of media imagery, academic and competition juries, and the job interview, where decisions are made with dispatch.

These latter requirements are all efforts to control the shifting realities of the modern world. By enforcing instantaneous recognizability and evaluation, the hope is to produce moments of control in the midst of contending forces that make certainty very difficult. The institution of architecture and its educational subsidiary seek to gain back their privileged position as the source of knowledge and power.

What are the consequences of this method beyond the ones intended? The underlying assumption is that it is pos-

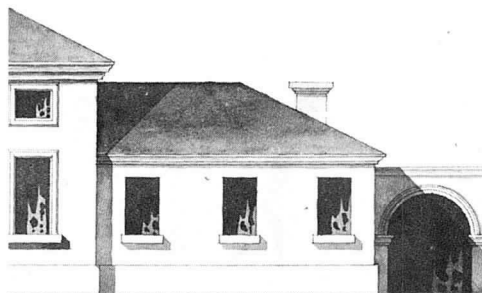
sible to determine the privileged precedents. Out of the universe of possible exemplars, only a few are selected at any one time, by any generation. The student is either given the answer, directed to an explicit exemplar and told to master it by reproducing it directly enough to be recognizable, or he or she is set forth on a treasure hunt whose success depends on uncovering the right answer. This implicit method can be exhilarating, but it turns up alternatives along the way whose inappropriateness needs to be explained. Or if not explained, then rejected in a puzzling exercise of power.

The search for, or repetition of the proper exemplar results in a powerful bonding between student and the object of veneration. By learning about the object, focusing attention on it, reproducing it, drawing often in loving and laborious detail, the explicit patterns of the model become part of the self-definition of the person. The precedents become inextricably entwined with the emerging image of the student as an architect. This is obviously a powerful reformation of personality and inculcation of primary values. And if all things remain relatively equal, such an intricate structure of interdependency will remain effective.

But by this means, architectural education also becomes an extension of architectural power. The exercise of control through exemplars produces constraints rather than possibilities. Preparation for a world characterized by shifting realities is not effective if the tool provided by the education is not adaptable.

Roberta Feldman is Assistant Professor in the School of Architecture at the University of Illinois at Chicago. She holds a Master of Architecture from the University of Pennsylvania and a Ph.D. in Environmental Psychology from City University of New York. In addition to being Principal, Architectural Design Research, Feldman Consultants, in Chicago, Feldman is co-editor of the Journal of Architectural and Planning Research.

Sidney Robinson is Associate Professor in the School of Architecture at the University of Illinois at Chicago. His Bachelor of Architecture is from Columbia University, and he has received a Doctorate in Architecture in Architectural History from the University of Michigan. Robinson has written several books on Prairie School ar-





February

1 ▼ Lecture

"Peter Bruegel: Landscape Architect." In conjunction with exhibition, "Landscape Drawings of Five Centuries, 1400-1900," at the Block Gallery, Northwestern Univ. campus, 1967 Sheridan Rd. 7:30 p.m. 491-4000.

2 ▼ LPCI Lecture

"Court House Square: The Planned Center of Activity in 19th Cen. Illinois. Part of series, "The Best Laid Plans." 5:30-7 p.m. The Traders Building, 401 S. LaSalle St., 3rd fl. atrium. \$4 LPCI member, \$5 non-member. 922-1742.

Structural Engineers Dinner/Meeting

"Contracts/Construction Law." Speaker: Werner Sabo. Beverly Hills Cafe, 312 W. Randolph. Reservations: 372-4198.

3 ▼ Focus Deadline

CAF Noon Lecture

"Hilberseimer's Plan for Chicago." Speaker: Peter Beltemacchi. ArchiCenter Gallery. 12:15 p.m. No fee.

4 ▼ Lecture

School of the Art Institute Interior Architecture Visiting Artists Series. Speaker: Margaret McCurry on innovative projects in interior architecture. Noon. SAIC Auditorium. 443-3711.

AIA Historic Resources Meeting

Featuring workshop on masonry restoration. Washington, D.C. Thru 2/6. Contact: Bruce Kriviskey, 202/626-7452.

6 ▼ CCAIA Roundtable

"Survival Techniques." Identifying & discussing the concerns regarding personal dynamics behind building of architecture. Noon. Board Room.

7 ▼ Lecture

On John Ruskin, in conjunction with exhibition, "Landscape Drawings of Five Centuries," at the Block Gallery, Northwestern Univ. campus, 1967 Sheridan Rd. 2 p.m. 491-4000.

9 ▼ CCAIA Executive Committee Meeting

8 a.m. Board Room.

CCAIA Interior Architecture Program

"Interior Places." Looking at Coopers & Lybrand. 6 p.m.

CCAIA Planning & Urban Development Program

"Developers Dinner." 5:30 p.m. Tavern Club, 333 N. Michigan, 26th fl., Edgar Miller Room. \$40. Send check to Chapter office for reservation.

LPCI Lecture

"Neighborhoods: Two Case Studies." Part of series, "The Best Laid Plans." 5:30-7 p.m. The Traders Building, 401 S. LaSalle St., 3rd fl. atrium. \$4 LPCI member, \$5 non-member. 922-1742.

10 ▼ CAF Noon Lecture

"State Street: The Blueprint for Progress." Speaker: Sara Bode. ArchiCenter Gallery. 12:15 p.m.

CCAIA Office Practice Program

"The Architect/Client Relationship." 5:30-7:30 p.m. Board Room.

11 ▼ Lecture

School of the Art Institute Interior Architecture Visiting Artists Series. Speaker: Barry Birsol, discussing furniture of the 80s. Noon. SAIA Auditorium. 443-3711.

15 ▼ Submissions Due

AIA Education Honors. Acknowledging significant achievements in the formation, implementation, and outcome of architectural instruction. Submissions describing programs due at AIA headquarters. Details: Joe Bilello, 202/626-7358.

16 ▼ LPCI Lecture

"Chicago's Boulevards: Their Brilliant Past & Bright Future." Part of series, "The Best Laid Plans." 5:30-7 p.m. The Traders Building, 401 S. LaSalle St., 3rd fl. atrium, \$4 LPCI member, \$5 non-member. 922-1742.

17 ▼ CAF Noon Lecture

"Uses of Parks in the 21st Century: Historian vs. New World." Speaker: Walter Netsch. ArchiCenter Gallery. 12:15 p.m.

AIA Committee on Architec- ture for Health

On mental health facilities. Thru 2/21 in San Francisco.. Contact: Mike Cohn, 202/626-7366.

CCAIA Real Estate Program

"Emerging Trends." 5-7:30 p.m. 2nd fl. conference room, Merchandise Mart. \$5 includes wine/light snacks. Checks to Chapter office.

18 ▼ CCAIA Historic Resources Program

"Restoration of Historic Roofing & Architectural Copperwork." Noon. Board Room.

CCAIA Young Architects Program

"Design Entrepreneurs." With Linda Searl, Chris Rudolph, John Syvertsen, Tom Longhi. \$5 members, \$7 non-members, \$3 students. Reservations: Regina, 663-4111.

Lecture

School of the Art Institute Interior Architecture Visiting Artists Series. Speaker: Larry Booth on current work. Noon. SAIC Auditorium. 443-3711.

AIA Regional & Urban Design Committee

Open meeting on downzoning and regional development thru 2/20 in Dallas. Contact: Bruce Krivisky, 202/626-7452.

19 ▼

CCAIA Gov't./Industry/Education Architects Program

Planning an acoustically-successful project. Noon. Board Room

CCAIA Selling Skills Seminar

Limited to 15 participants. Cost for day-long seminar, \$35 for members, \$45 non-members - includes continental breakfast & lunch. 8 a.m.-4:30 p.m. Steelcase Showroom, Suite 1118, Merchandise Mart. Checks to Chapter office. Held again on Feb. 20.

PSMJ Seminar

"Getting PMs to Think and Act Like Principals." Thru 2/20 in Washington, D.C. Information/reservations: Elisa van Dam, 800/537-PSMJ.

AIA Architecture for Education

Open meeting in conjunction with Amer. Assoc. of School Administrators nat'l. convention. Thru 2/21 in Las Vegas. Contact: Christopher Gribbs, 202/626-7589.

20 ▼

CCAIA Student Affairs Program

"Perspective Sketching for Design & Presentation." Crown Hall, IIT, 3360 S. State. 1 p.m. \$2 members, \$5 non-members. Checks to Chapter office.

CCAIA Selling Skills Seminar

2nd chance to participate. Limited to 15 attendees. Cost, \$35 for members, \$45 non-members - includes continental breakfast & lunch. 8 a.m.-4:30 p.m. Steelcase Showroom, Suite 1118, Merchandise Mart. Checks to Chapter.

23 ▼

CCAIA Board Meeting

Noon. Board Room

CSI Meeting

"Indoor Air Quality." Program, 5:45-7 p.m. (\$6 with reservations); dinner (optional), 7-8 p.m. Dinner & program, \$17 with reservations. M & M Club, Merchandise Mart. Reservations/information: 641-5986.

24 ▼

CAF Lecture

"Cresendo: The Lakfront Bridge Proposal." Speaker: Dieter Wagner. ArchiCenter Gallery. 12:15 p.m.

UIC Lecture

"Typology of the Nomad." Speaker: David Bell, visiting professor, UIC & professor, Rensselaer Polytechnic Institute. 5 p.m. Behavioral Sciences Bldg., 1007 W. Harrison St., Rm. 250. Free & open to public. Information: 996-3335.

25 ▼

CCAIA Planning & Urban Development Committee

Design critique of "Chicago River Master Plan." 1-6 p.m. North Pier Terminal Project, 401 E. Illinois. \$5 to Chapter office for reservation.

Lecture

School of the Art Institute Interior Architecture Visiting Artists Series. Speaker: Ken Schroeder on current work. Noon. SAIC Auditorium. 443-3711.

26 ▼

AIA Interiors Committee

Open meeting on marketing of interior architectural services. Thru 2/28 in Atlanta. Contact: Christopher Gribbs, 202/626-7589.

27 ▼

CCAIA Roundtable

"Survival Techniques." Identifying & discussing the concerns regarding the personal dynamics behind the building of architecture. Noon. Board Room.

28 ▼

Octagon Exhibition

Last day of "Louis Sullivan: Ornament and the Skyscraper." 1799 New York Ave., N.W., Washington, D.C.

March

I ▼

Submissions Due

"AIA Citations for Outstanding Education in Practice," recognizing successful strategies for achieving excellence in architectural practice. Submissions due at AIA headquarters. Details: Joe Bilello, 202/626-7358.

Deadline

St. Louis Chapter Photo Contest entries due in St. Louis office, 911 Washington, #225, St. Louis, MO 63101-1203. Entry forms appeared in Nov. 1987 AIA Memo or may be obtained by calling, 314/621-3484.

2 ▼

UIC Lecture

"Ornament-Its Sex-Typing & the Early Modern Movement." Speaker: Catherine Lynn, director of Education & Development, Connecticut Trust for Historic Preservation. (1st Annual Eva Maddox Lecture.) 5 p.m. Behavioral Sciences Bldg., 1007 W. Harrison St., Rm. 250. Information: 996-3335.

UIC Seminar

"Model Guide Specifications for Asbestos Abatement & Management in Buildings." Sponsored by UIC School of Public Health, Midwest Asbestos Information Ctr. Ambassador West Hotel. Information: 996-5225.

7 ▼

Applications Due

Roche Traveling Scholarships. To Chapter office by 4 p.m.

One of Chicagoland's Largest Property Management Firms chooses

THUNDERBOLT Fabric Protection

podolsky
and associates

One Westbrook Corporate Center
Suite 640
Westchester, Illinois 60153
312 531-8200

April 2

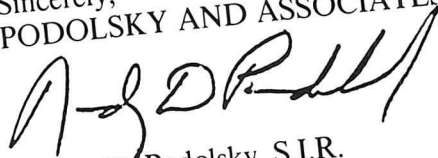
As the Developer and Manager of *Westbrook Corporate Center*, I would like to commend Thunderbolt Fabric Protection on the performance of their carpet treatment system. Thunderbolt has done an **exceptional job of protecting the carpeting** in the common areas of this office complex. It has **had to withstand the rigors of construction traffic** as well as the normal office traffic.

The lobby area carpeting has proven their claims. It was overlooked for carpet cleaning for six months since its initial treatment (**six months of snow and rain**). **After cleaning it looked like new.**

The corridor carpeting was saturated with water because of a sprinkler head break. Their service crew was very impressive in the **prompt way they responded to our call and the efficient manner** in which they extracted the excessive water from this saturated carpeting. **The carpet still looks as good as the rest of the corridor carpeting.**

Because of the above instances, the Property Management Division at Westbrook Corporate Center treats all common area carpeting with Thunderbolt treatment system. In addition, **Thunderbolt is recommended** to incoming tenants for their offices as well.

Sincerely,
PODOLSKY AND ASSOCIATES, LTD.



Randy D. Podolsky, S.I.R.
Executive Vice President.

RDP:mms

From *Chicago's Westbrook Center* to the *Hong Kong Sheraton*, we've earned a reputation for *fabric protection know-how, quality workmanship and outstanding service.*

Shouldn't you be recommending THUNDERBOLT to your clients?

- Carpet and Fabric Protection • Anti-Static Protection • Anti-Sun Fade Protection • Flame-Proofing • Microbial Treatments •
- Wallpaper and Fabric Lamination • Spotting Services • Commercial & Residential Carpet & Upholstery Cleaning •

Pre-Installation services available at our plant

Thunderbolt
FABRIC PROTECTION

Serving the Entire United States
Hazel Crest, IL 60429 • (312) 596-0200

A Post-Script on Post-Modernism

By David A. Hansen, AIA

The exceptional economic conditions and highly competitive marketplace between the late 1970's and the mid-1980's, along with a grassroots revolt against the severity of the modern movement, became the catalyst for the rapid growth of post-modernism. In Chicago alone, 34 million square feet of completed space has been added since 1979, increasing the downtown inventory by nearly one-third, according to the *New York Times*.

"...Demographic and related...changes in this country were so dramatic that architects had to find solutions very different from those advanced in earlier, less pressured, and more ordered times," said Peter Blake, AIA, in his article, titled "The Case Against Postmodernism," in a recent issue of *Interior Design* magazine.

Today, the market that nurtured post-modernism is decidedly different, characterized by:

- ▶ **New tax laws that encourage long-term investment rather than speculation;**
- ▶ **Increased foreign investment** that is making many projects possible;
- ▶ **Emphasis on quality and efficiency** in order to reduce capital investment and operating costs;
- ▶ **Popularization of architecture and architects** as the media stars of the 1980's and 1990's;
- ▶ **Continued economic growth**, which, in downtown Chicago, will produce an estimated 17 million square feet of office space within the next five years, according to a recent Royal LePage report.

Most agree that the last vestiges of post-modernism are currently under construction and can be labeled as illustrations of architectural trends of yesterday. Whether history will view post-modernism as an important departure in architectural design or merely a slight detour in the modern movement,

one thing is sure: Post-modernism has had an undeniable impact on this generation of architects.

That impact followed the same course as many economic trends which began positively, then grew until they reached a point of diminishing returns. I believe we were at that point when post-modernism fell from grace. Had the style lingered, it may have adversely affected our built environment.

As an exercise in the rediscovery and contemporary application of historic references by capable probing architects, post-modernism served its purpose - that of pulling designers from the stark and "universal" box that had prevailed for three decades. However, I feel, as the style became more of a media event than a serious exploration, architects used post-modernism as a vehicle to publicize themselves. As a result, what once punctuated the dense and diverse urban environment with interest (albeit without contextual reference) began popping up on the unbuilt landscape of the suburbs with unnecessary and unwarranted high profile.

The paradox of post-modernism is that the very "instant landmarks," designed to attract attention, will ultimately lead to the unmarketability of these strange oddities, as the danger of too much of anything is too much of something.

Although, initially, few architects believed that post-modernism would overtake modernism as a movement, the design press's overwhelming and solicitous response to this departure from the norm converted a large group of visible professionals. Now that the media barrage has dwindled and become more critical in assessing the merits of post-modernism, architecture is no longer media-driven, but again market- and technology-driven.

Post-modernism must be credited with increasing the velocity of change in architectural design. For 30 years, architects explored design solutions within narrow stylistic parameters. Entire generations of architects learned their modernist catechism and practiced its precepts throughout their careers, never straying from the fold. It might surprise some to know how many architects continue to follow this and other individualistic approaches without the influence of post-modernism. But for those who were influenced, modernism will never be the same. For them, post-modernism represented the rebellion that will allow them to explore a more diverse continuum within the modern movement.

It was anti-Mies, anti-rules, anti-establishment. And it was fun. But, in the end, architecture is inherently a serious profession whose practitioners must never lose sight of their environmental responsibilities.

Post-modernism has changed modernism forever and, I believe, for the better. Already born-again modernists are becoming reacquainted with their obligation to improve the human condition and are rediscovering the validity of rules, of context, of efficiency, of quality and of basic appropriateness.

The current design trend, representing a break with post-modernism, utilizes neo-classical massings and ornamentation to gain attention through the celebration of contextual references. Viewed from a historical perspective, these buildings will add diversity to the homogeneity of our cities and, in an ironic twist of fate, will result in a renewed respect for background buildings.

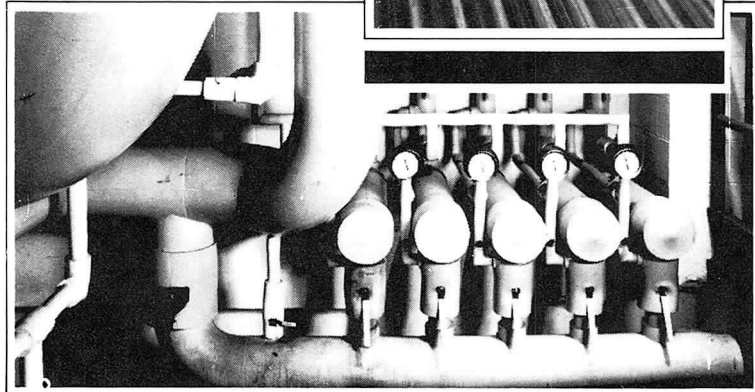
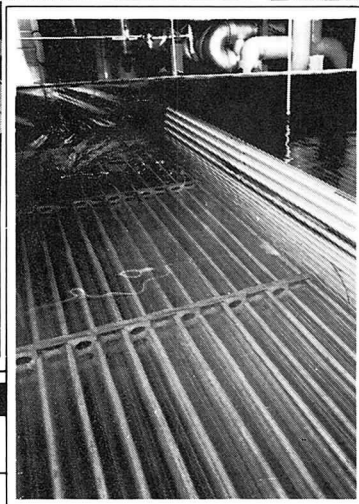
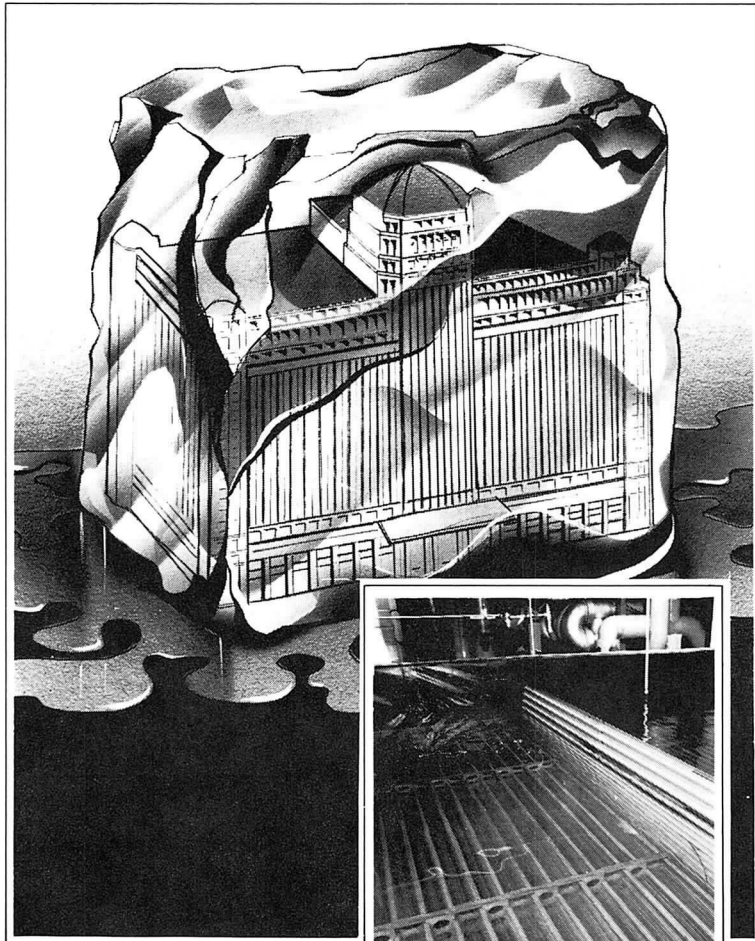
Emerging from the post-modern tangent will be a new modernism vector with a less myopic view and a new appreciation of the pleasing and sculptural nature of design. The mature modernism of the 1990's will be more complex, more intellectual, more tolerant, more thoughtful, more eclectic, and more personal.

Ultimately, it is my belief that modernism is no longer tied to a historical movement, but has become timeless as it continues to respond to technological innovation and market demands. This, then, is the most positive outgrowth of tangential trends, because, long after the photo sessions, the hype, and the controversy, the legacy of the buildings we design today will influence the quality of life tomorrow.

David A. Hansen, AIA, is Vice President and Design Principal of Perkins & Will. Hansen was graduated by the University of Illinois, Champaign-Urbana with a Bachelor of Architecture and Master of Urban Design degrees. He currently serves as design principal for a one-million-square-foot mixed-use commercial development along the River Thames in London, the 160-acre expansion of Abbott Laboratories' corporate-headquarters campus in North Chicago, and the new 600,000-square-foot office complex for Kraft, Inc., in Northfield Township.



SOME PROBLEMS ARE BEST PUT ON ICE



HELPING 800 MERCHANTS MAINTAIN THEIR COOL

When The Merchandise Mart, the world's largest commercial building, needed a new and more efficient cooling system, they turned to the ice storage method. It's an old idea but a new technology—one that lowers energy costs by shifting peak power usage to off-peak hours.

When it came time to install the new system, they backed this investment with another smart investment. They insisted on an experienced mechanical contractor and trained, union pipefitter mechanics to install the new system.

Now a 230 ft. ice bank freezes up to 2.2 million cu. ft. of ice overnight (when electricity is cheapest). This economical system cools the Mart's 800 showrooms and offices during the busy daytime hours.

More and more, innovative building managers are relying on today's efficient mechanical systems to bring energy costs under control. And they're counting on *experience* and *training* to help gain that control. Need to find a qualified mechanical contractor? **Call 312/670-6756.**

PIPING
SYSTEMS
COUNCIL
EXPERIENCED
MECHANICAL CONTRACTORS & TRAINED UNION PIPEFITTERS

NEWS
from the

**PIPING
SYSTEMS
COUNCIL**
EXPERIENCED
MECHANICAL CONTRACTORS & TRAINED UNION PIPEFITTERS

1,200 COMPLETE SAFETY COURSE

"Safety on the jobsite is not just everyone's business; it's everyone's responsibility." This message bears repeating. So we've been repeating it: so far to more than 1,200 journeymen pipefitters from Local 597, U.A. They've heard it at one of the many *OSHA Construction Safety and Health Courses* that have been sponsored regularly by the Piping Systems Council in recent years. We all need to be reminded of the dangers that do exist on the job, and the simple steps each of us can take to prevent accidents from occurring. We're working to assure job safety throughout our industry. The 10-hour OSHA course is now also part of our apprentice pipefitter training. Each of us has a vital interest in a safe workplace. We all work better and more profitably with good safety habits.

60 YEARS OF LABOR PEACE

If history has taught us that people will always have differences, it has also shown us two powerful tools for solving them: communication and compromise. Since helping to introduce joint arbitration into the national labor scene here in Chicago some 60 years ago, mechanical contractors have utilized this system to deal with labor-management issues and concerns quickly and effectively. The bilateral Joint Arbitration Board comprises both mechanical contractors and officials of Local 597, U.A. It has proven itself an effective tool for solving differences between both groups fairly and swiftly—and without work stoppages. For you and for us, this system has contributed to 60 years of strike-free performance, reasonable working agreements, and cooperation in keeping the job moving ahead.

PIPEFITTERS GO BACK TO SCHOOL

Even the most expensive automobile is worthless if the engine doesn't start—or run well. The same is true with mechanical systems. It's not enough to simply assemble all of the components. Unless they are calibrated properly, the system will not run efficiently—or perhaps fail to run at all. Testing, balancing and adjusting mechanical systems for peak efficiency and performance was the focus of a 10-hour workshop sponsored recently by the Piping Systems Council. This refresher course reminded some 80 engineers, project managers and journeymen pipefitter mechanics of the need for effective TBA in the design and installation of hydronic systems. It covered the equipment, tools and techniques involved in fine tuning the systems in which they specialize. Regular technical workshops such as this are helping us to assure you of competent, competitive mechanical services.

Retirement Planning Plus Tax Savings

The Simplified Employee Pension Plan

By Mark Thompson

The architectural profession has many small and successful firms that could take advantage of an often-overlooked alternative to various pension plans and still receive a tax deduction for the 1987 tax year - even if they missed the December 31 deadline. Since its introduction in 1978, the Simplified Employee Pension Plan (SEP) has been gaining popularity due to the ease of administration and flexible contribution allowances. Most employers, whether self-employed individuals, owners of unincorporated businesses, partnerships, corporations or S corporations, are eligible to adopt a SEP.

A SEP plan can be an important tax planning tool for the employer and the employee. When properly established, SEP contributions in an amount of 15% of compensation or \$30,000 (whichever is less) are tax deductible for the employer. This can mean substantial tax dollar savings. Furthermore, SEP contributions within the allowable limits are not taxable as current compensation to the employee until they are withdrawn from the SEP. The tax-deferred status of the earnings on SEP assets can greatly accelerate the growth of the funds and provide a larger pool of capital for retirement.

Establishment of the plan is a simple agreement to make SEP contributions to all eligible employees' IRAs. Therefore, a SEP normally does not involve costly legal or pension administrative fees. Copies of a completed SEP contribution agreement and accompanying disclosure information are given to your eligible employees. They in turn would establish a SEP-IRA to receive company contributions.

SEPs are exempt from many of the federal regulations and IRS filing requirements which apply to other types of tax-qualified retirement programs. Once the employer has made the contribution to the employee's SEP-IRA,

he or she is no longer responsible for reporting on or administering those accounts. Furthermore, since a SEP permits employees to direct the investment of their own IRAs, the employer has no responsibility for such investments and avoids many of the fiduciary duties usually associated with a qualified employee benefit plan.

Contribution amounts can vary each year or be omitted entirely. Each year the employer may decide whether or not to make SEP contributions. If contributions are made, the employer decides how much to contribute. When the employer makes SEP contributions, he or she must make them in the same percentage of total compensation for each eligible employee. Eligibility is defined as all employees who have attained age 21 and who have performed any part-time or full-time service for the employer in three out of the last five years. Employees covered under a collective bargaining agreement, non-resident alien employees, and those who earn less than \$300 annually need not receive SEP contributions.

Selecting the right IRA to receive SEP contributions is an important decision for you and your employees. The quality of investments available, the ability to change investments as needed, the competitiveness of the administrative fees, and the ease of making the contributions are the items to be considered. Self-directed IRAs are most appropriate because each individual can decide upon investments such as stocks, bonds, certain mutual funds, certificates of deposit, certain limited partnerships, and certain covered option strategies. Each individual decides what investment to make, how much to invest in any one or more types of investments, and when to buy or sell his or her SEP-IRA investments. This opportunity to change investment strategies and diversity increases each individual's growth opportunities.

Finally, the SEP can also receive the regular IRA contributions from the employee and can even be combined with past years' employee contributions to make one single account for retirement plan assets. Besides the employer's SEP contribution, all employees under age 70 1/2 may also make IRA contributions in an amount up to 100% of their earned income or \$2,000, whichever is less. This increases the employee's retirement savings and supplements the SEP contributions. The additional contribution will be tax-

See *Retirement* page 19

Jones & Brown Company is:

Swift Steel

Structural Steel and Miscellaneous Iron

Decking & Siding

Erectors of Sheet Metal, Structural Steel and Miscellaneous Iron

Engineered Air Systems

Industrial Sheet Metal, Air Pollution Systems

Darien Mechanical Industries

Industrial and Commercial Piping

Peerless Metal Products

Food, Drug, Industrial, Special Metal Fabrication

Therne Corporation

Food Processing Equipment

Southern Architectural Systems, Inc.

Architectural Panels, Hollow Metal and Hardware

317 people working for you.



Jones & Brown Company, Inc.

568 West Winthrop Ave., Addison, IL 60101 • (312) 543-0300
Houston, Texas • (713) 956-6379

Designing, Building and Rebuilding for Tomorrow

Retirement

Continued from page 17

deferred on any earnings and may or may not be deductible depending on their Adjusted Gross Income and whether or not a SEP contribution is made to their SEP account. The combined account is ideal to consider, especially for those with IRA contributions spread over many different financial institutions for each year's contribution.

The overwhelming majority of AIA members are self-employed or with a small two- or three-member firm. The SEP is an excellent way to establish a plan for their retirement and receive the appropriate tax benefits from the IRS.

Mark Thompson is an Associate Vice President, Investments, at Dean Witter Reynolds in Chicago. He provides retirement plan, foundation and trust asset management to the architectural profession, including the Chicago Chapter, AIA.

Late Breaking News

Design Committee to Curate Architectural Detail Exhibit

Detail encapsulates and represents the point where concept becomes built form. The architect's working drawing is the curious communication between ideation and execution.

The CCAIA Design Committee is planning to curate an exhibit, titled, "The Divine Detail, which will feature member firms' drawings, models, and photographs of built work, to engage both the architectural community and the public in the exploration of this topic. The objective of the exhibit is to display projects that challenge and extend the concept of architecture and the relationship between concept and the built form at the detail level.

Because of the thematic nature of the exhibit and the gallery's space limitations, work to be included will be selected by the exhibit committee from the first of a two-part submission. The exhibit will create dialogue by placing side by side a great variety of projects, so both new and established firms are encouraged to enter. A "call for entries" with specific requirements for entering this exhibit will be mailed in February. Questions regarding this exhibit can be referred to Mary Beth Carroll, 663-4111.

Tannys Langdon, AIA



The Green Door Tavern
Hours: 11:00am-Midnite

Relaxed, casual dining in one of River North's oldest traditional taverns. Historic 115 year old building houses bar & unique memorabilia collected over the years. Sidewalk cafe, good food & collectibles make this historic tavern a must during gallery tours.

678 N. Orleans St., Tel: 664-5496
Your Host: George Parenti

Architectural Draftsman Wanted

Firm seeking architectural draftsman & estimator. Previous experience in stone detailing a plus. Send resume to: Joe Santello, Carrara Marble Co., 2148 N. Natchez, Chicago, IL 60635, telephone 237-0415

Technical Associate Architect Wanted

Design-oriented architect with successful small practice seeks association & office sharing with technically-oriented architect with experience in residential & commercial renovation & new construction. My office or relocate in Lakeview/Lincoln Park. Randy Fielding, 348-7758.

Indiana University-Purdue University at Fort Wayne

The Dept. of Civil & Architectural Engineering Technology is seeking qualified candidates for anticipated positions in civil or architectural engineering technology in ABET accredited degree programs. A teacher for Architectural or Environmental Engineering is preferred, but other areas of interest will be considered. Master's degree in Civil Engineering or Architecture is required. Industrial experience & professional registration preferred. Teaching experience is desirable. The industrial climate in the area offers many opportunities for consulting. Send resume to Professor Helen Plants, PE, Chairman, CAET, IPFW, 2101 Coliseum Blvd. East, Fort Wayne, IN 46805. Applications will be considered through March 1, 1988, or until the position is filled. Starting date is August 15, 1988. IPFW is an AA/EOE.

Architectural Designers (2) Chicago Park District

College degree in architecture, minimum 4 yrs. experience, some exp. in preservation desired but not required. Excellent opportunity to design park & recreational facilities. Starting salary, \$34,512, plus benefits.

Landscape Designers (2)

Excellent opportunity to design park & recreational facilities. College degree in landscape architecture, minimum 4 yrs. experience in the field are required. Some experience in landscape history & preservation desirable but not required. \$34,592 plus benefits.

Applicants for above positions must be U.S. citizens, residents of City of Chicago on day of hire. For applications, come to the Chicago Park Dist., Dept. of Personnel, 425 E. McFetridge Dr., Chicago, IL 60605. Equal Opportunity Employer. M/F.

Law office
Werner Sabo, AIA
ATTORNEY

8 S. Michigan, Suite 1306
Chicago, Illinois
332-2010

MURALS



CUSTOM INTERIOR MURALS. Any subject matter or graphics. Painted off-site on canvas and permanently cemented to walls. Each wall installs in a matter of hours.

ROBERT BECKER
(312) 642-1994

Structural Ceramics

A unique new system designed to meet psychological needs in defined environments

The

Rhapsody
COLOR COLLECTION

Structural Glazed Facing Tile & Brick for interiors and exteriors alike

Stark Ceramics, Inc.

Rauch Clay Sales Corporation
3037 South Christiana Avenue
Chicago, IL 60623
Phone: (312) 254-0775

▼
The Chapter wishes to acknowledge that **David Carroll Orr, AIA**, executed the pen and ink illustration drawing of the 190 S. LaSalle St. Building facade that appeared on the front of the invitation for the December 3 party held in the lobby of the building.

▼
Another first for **Gertrude Lempp Kerbis, FAIA**: she has been elected the first woman president of the Cliff Dwellers, a 116-year-old organization whose members are professionally involved in or are "committed observers" of the arts. Cliff Dwellers was organized in 1872 as the Attic Club, changing its name to Cliff Dwellers in 1907. Women members were admitted in the past year or so.

▼
Harry J. Hunderman, AIA, Wiss, Janney, Elstner Associates, Inc., has been appointed to a three-year term as an AIA representative on the AIA/ACSA Architectural Research Council. The AIA and the Association of Collegiate Schools of Architecture recently created the council to serve as a link between the profession and schools of architecture where significant research activity occurs and where the results of research can influence activity within the profession.

▼
Bill Brubaker, FAIA, vice chairman of Perkins & Will, was invested as Chancellor of The College of Fellows of The American Institute of Architects. The 1,670 members of the Col-

New Members

AIA

Carol M. Schmidt, Heard & Associates Ltd.; **Michael Hershenson**, McBride & Kelley Architect; **Jagdip A. Raval**, The Austin Company; **John T. Stratford**, CFS-DESCO Inc.; **Dennis Vovos**, Holabird & Root; **Jeanne M. Zagrodnik**, Nagle Hartray & Associates.

Associate

Kyle G. Benkert, Kyle Benkert Associates; **Nancy N. Abismo**, Techno Ltd.; **Roberta M. Feldman**, UIC School of Architecture; **Darryl C. Mallet**, Herbert Shaffer Associates; **John T. McCall**, Baxter Health Care Corp.; **Constance E. Nestor**, Cook County Hospital; **Anthony A. Thompson**, U.S. Gypsum Corp.; **Patricia D. Berardid**, Beco Engineers & Technical Service; **Paul A. Krutulis**, John Victor Frega Associates Ltd.; **Samuel A. Ojo**, The Austin Company; **Adam Skinner**, Kirk/Tyler A&E.

Reinstates

Dominic Adducci, AIA, CNA Companies; **Phillip Kupritz**, AIA Phillip Kupritz Associates.

Transfers

From Wisconsin Chapter, **Edward L. Kresinske**, AIA; from Houston Chapter, **Michael R. Chastain**, AIA; from San Francisco Chapter, **Donald N. Uding**, AIA.

Students

From IIT: **Maureen E. Harper**, **Anthony P. Lebello**, **Jeffrey G. Deck**, **Mathew B. Filippini**, **Lydia Gouevia**, **Curtis B. Pierce**, **Li Christopher Ren**, **Patricia Schroettner**, **Hector M. Guillen**. From UIC: **Doughal J. Fullick**, **Michael Roach**. From the School of The Art Institute: **Judith G. Leppert**, **Judith C. Long**, **Hye-Young Park**, **Sarah Potter**.

lege of Fellows, founded in 1952, have been advanced to Fellowship in the AIA for notable contributions to the profession. Brubaker is past president of the CCAIA and a member of the AIA Urban Design and Planning Committee and Committee on Architecture for Education. He is past president of the Council of Educational Facility Planners, member of the Metropolitan Planning Council's board of governors, board member of the Chicago Architecture Foundation, and former board member of the Society for College & University Planning. Bill is well known as an author of many articles on architecture, planning, and humanistic use of the existing built environment.

▼
The 1988 AIA Fellows Jury will meet early in February. Those who have been selected to be invested into the College of Fellows will be personally notified the last week in February. The Chapter will then subsequently receive the announcement.

▼
Larocca Architects is pleased to announce the appointment of Thomas A. Moreau, AIA, to the position of associate in the firm.

▼
Richard Cook, AIA, is one of two Illinois Regional directors to the National AIA Board of Directors. Walter Lewis, FAIA, of the School of Architecture at University of Illinois, Champaign-Urbana, also represents the Illinois Region to the AIA Board. Cook was 1981 president of the Chicago Chapter and president of the Illinois Council in 1984. He was chairman of the 1987 AIA National Convention in Orlando, has chaired the membership services task force, and has served on the documents committee.

▼
Harry Gregory, Professional Affiliate, recently started his own business as a full service commercial interiors contractor. Gregory Floors and Interiors supplies and installs all types of floor covering, furniture, and window treatments. The firm is located at 767 Byron Court, Olympia Fields, telephone 748-2333.

▼
Friis Moltke Larson Architects, one of the largest architectural firms in Scandinavia has opened a full-time, permanent office in Chicago. It is the first and only European architectural firm to have a permanent home in the U.S. Knud Friis, Hon. FAIA and partner of Friis and Moltke Architects in Denmark, and Jay R. Larson, AIA,

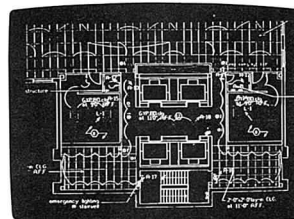
Why the most advanced CAD system for architects and building designers puts you on the edge.

ARRIS

And keeps you there.



Presentations - Dramatic visualizations help you win new business and communicate design ideas.



Production - Design automation, design refinement and 3-D capability increase your productivity.

Today, there is a revolutionary CAD system that puts you on the edge - the competitive edge. A CAD system that goes far beyond the ordinary, and gives you the edge in production, presentations, plus a lot more.

The name of this system is ARRIS™. And it is the remarkable system that will instantly show you why ordinary CAD is no longer enough for architecture and building design and management.

THE COMPETITIVE EDGE IN PRODUCTION.

With ARRIS, you don't have to make drawings line by line. Instead, you enter basic design parameters - and let the system do the rest of the work, *automatically*. So more work gets done, in less time.

THE COMPETITIVE EDGE IN PRESENTATIONS.

With ARRIS, you can create extraordinary design and marketing presentations that help you win more business. For example, ARRIS 3D modeling and rendering allows you and your clients to view your project from any perspective, at any angle, at any time of night or day. And to "walk through" rooms as if they really existed.

PLUS.

ARRIS allows your project teams to share data, drawings and systems - so they can work on entire projects, not just single drawings. Plus, ARRIS will grow as you grow, so you keep your competitive edge.

So be sure to call today for our *free* ARRIS demonstration. We're your ARRIS Power Dealer - and we can show you how ARRIS provides extraordinary CAD capabilities. And we can also provide you with the very best in training, service, and support. Call now to get the competitive edge.

ARRIS SALES & SUPPORT IS PROVIDED BY:

CADD MIDWEST CORP.

440 North Orleans Street
Chicago, IL 60610
312/527-2444

SERVICES.

- drafting
- digitizing
- plotting
- 3-D Modeling
- data base translating
- user training
- time sharing
- custom software
- system sales

EXPERIENCE.

In addition to prior design and project management experience, our staff of architecture, engineering and interiors professionals has worked with CADD for over 6 years per person on average. We provide CADD systems and services to design and engineering firms across the country. We know your business and production process.

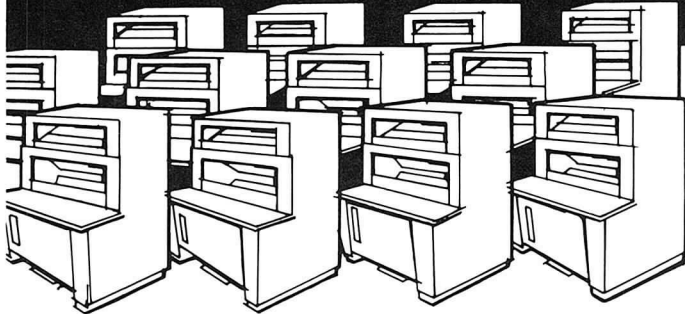
SUPPORT.

CADD Midwest sells and supports a variety of CADD Systems. We prefer ARRIS, by Sigma Design because we find it to be friendly, fast, and intelligent. We stand behind ARRIS with confidence.

We invite your questions and inquiries.

Paul H. Lutton, AIA
President, CADD Midwest Corp.

**When you need 1
or 1,000,000 blue
prints, or any other
quantity...**



**MOSSNER'S 15 State-of-the-Art
Blue Print-White Print Machines
at One Location Produce Them
Fast, Fast, Fast**

**NO JOB TOO LARGE
NO JOB TOO SMALL**

**BLUE LINE, BLACK LINE,
BLUE PRINTS AND
SEPIA REPRODUCIBLES**

Speed, quality and dependability... these characterize Mossner's "blue print" service since 1922.

For more than 60 years, Mossner has provided the latest and fastest state-of-the-art, high-production equipment.

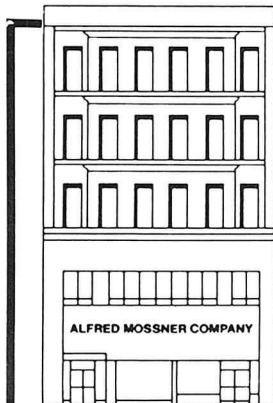
More than 50 messengers plus radio-dispatched pick-up and delivery vehicles assure the fastest possible service, including dependable print distribution to consultants, contractors and clients.

And that goes for *any* quantity you may require.

Mossner 372-8600

THE REPRODUCTION PEOPLE • LARGEST IN THE MIDWEST

Mossner Building • 137 North Wabash at Randolph (across from Marshall Field's), Chicago, IL 60602



Fast one-source service for all of your reproduction requirements

PHOTOMECHANICAL SERVICES

- STAR-REPRO® Drafting Systems—for pin-bar, overlay and team drafting
- Precision camera work up to 48 in. by 72 in.; enlargements and reduction to 10 times.
- Autopositives
- Scissor drafting
- Photo drafting
- PencilTone® reproductions
- Xerox 600 enlargements from 35mm microfilm
- Xerox 2080 and 1860 translucent vellum or Mylar intermediates, and paper prints - reduced or enlarged

OFFSET PRINTING

- Specification sheets and booklets
- MAGI-COPY® fast printing service — ideal for architectural and engineering specifications

**105mm and 35mm MICROFILM SERVICE
DRAFTING SUPPLIES AND FURNITURE**

**BLUE PRINTS,
WHITE PRINTS,
SEPIA INTERMEDIATES
ON PAPER OR MYLAR**

WE DO IT ALL UNDER ONE ROOF

Principal of Friis Moltke Larson, have jointly announced the opening of the firm's offices at 70 W. Hubbard St., Chicago. Previously located in Princeton, New Jersey, the firm will execute all U.S. projects from its new Chicago office. Friis Moltke Larson recently completed the Scanticon-Minneapolis Executive Conference Center and Hotel, having designed the Scanticon-Princeton Executive Conference Center, with another Scanticon under construction in Denver.

▼
Stuart Cohen & Anders Nereim Architects' design for Ruskin Street Beach Pavilion in the new town of Seaside, Pt. Washington, Florida, won a Merit Award in the American Wood Council's 1987 Nonresidential Wood Design Award Program. The large-scale pavilion, a 170-foot long structure built entirely of wood and straddling the dunes between a major highway and the Gulf of Mexico, was among six projects selected to receive awards from 117 national entries.

▼
Skidmore, Owings & Merrill, Perkins & Will, and A. Epstein and Sons, Inc. were among 12 area architecture and engineering firms to be presented with 1987 ASHRAE Energy Awards. SOM received the Energy Achievement Award in "Office - New" category for NBC Tower at Cityfront Center, Chicago; for Manufacturers Hanover Plaza, Wilmington, Delaware; and for AT&T Corporate Center-Phase I, Chicago. A 1st Place Award in "Residential - New" category was awarded for Park Place of Bethesda, Bethesda, Maryland. Perkins & Will received the 1st Place Award in "Mixed Use - New" category for Time/Life Books, Richmond, Virginia. The firm also won an Energy Achievement Award in "Mixed Use - New" category for Orland Park Village Center, Orland Park; and for Environmental Monitoring Laboratory, Geneva, Illinois, and an Energy Achievement Award in "Institutional" category for Materials Service Center, Youngstown, Ohio. A. Epstein and Sons, Inc. was presented with a 1st Place Award in "Systems - New" category for Albertson's Inc., Food Distribution Center, Aurora, Colorado and an Energy Achievement Award in "Government - New" category for State of Illinois Revenue Building/CDB Project, Springfield, Illinois.

▼
Louis Garapolo, AIA, president of Garapolo & Associates has announced the appointment of **Alan Bornmueller**,

Problems meeting spec deadlines?

Projects constantly over budget?

You need



Computerized project management/billing services and specification typing are our business.

Patricia L. Hitson

343 W. Erie, Suite 250, Chicago, IL 60610

312/943-2060

CAD *graphic systems for the professional including training and installation*

- furniture management software
- construction management software
- facilities management software



999 Plaza Drive Schaumburg, Illinois 60173

312.310.4417 1.800.223.5465

Celebrating 5 Years Faithfully Executing the Designs of Chicago's Most Demanding Architects

Our clients have said of us:

"They're not a large firm where our project would get lost."

"They're easy to work with."

"No problem."

"An attentive general contractor with a high degree of integrity."

General Contractors for New Construction and Renovation

EMPĒCO, INCORPORATED

450 Skokie Boulevard/#601, Northbrook, Illinois 60062

312.498.2404

For Commercial or Health Care Construction Call Mark Perlman

For Residential Construction Call Daryl Conro




AUTOCAD®

CADSYS INC.

230 E. Ohio St. Chicago, IL (312) 951-5598
"EXPERTISE FOR YOUR CAD SYSTEM"

AIA, as vice president of the firm. Among the firm's projects in its first year of business, Garapolo & Associates has executed space plan studies for MGM/United Artists Entertainment, growth analysis for the American Library Association, and interior design for August Bishop & Meier.

▼
O'Donnell Wicklund Pigozzi and Peterson Architects Inc. has announced the appointment of Valerie Olson to director of interior design, who joins the firm after serving as manager of interiors for the Austin Company. William Malewitz has joined the firm's staff as health care project architect.

▼
The Women's Architectural League wants to thank the Chicago Chapter and its members for their support of the WAL 1988 greeting card. Proceeds from the sale of the cards are used for architecture scholarships at UIC, IIT, and the University of Illinois, Champaign-Urbana.

▼
Architectural Record announces "In the Public Interest," an annual awards program aimed at encouraging and recognizing excellence in the design and planning of public architecture. Housing is the building type of the 1988 awards and includes several categories. Entries must be new or remodeled construction designed by registered architects and completed since Jan. 1, 1985. There are no entry fees or forms, but other submission requirements. All entries must be postmarked no later than May 1. For full information, call Paul Sachner at 212/512-3088, or write Sachner at Architectural Record, Editorial Offices, 1221 Avenue of the Americas, New York, New York, 10020.

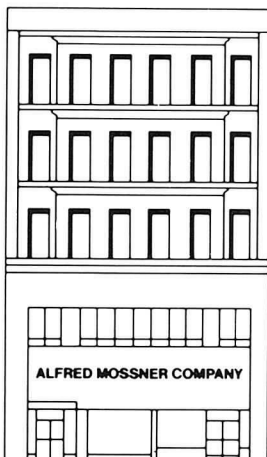
▼
The "world's tallest reinforced concrete building" at 311 S. Wacker, is the subject of a joint Structural Engineers Association of Illinois and American Concrete Institute, Chicago Chapter, dinner meeting on Mar. 15. The 65-story office tower will reach a record height of 959 feet when completed in 1990. Architects for the building are Kohn Pederson Fox Associates of New York and Harwood K. Smith and Partners, Dallas. For details/reservations, call 372-4198.

▼
The 1988 Health Facilities Review, the second in a series of publications on the design of health care facilities is being developed by the AIA.

Mossner

THE REPRODUCTION PEOPLE • LARGEST IN THE MIDWEST

MOSSNER BUILDING



137 North Wabash

AT RANDOLPH
 (ACROSS FROM
 MARSHALL FIELD'S)
 CHICAGO, IL 60602

Telephone:
372-8600

**MORE THAN 50
 MESSENGERS**

Fast one-source service for all of your reproduction requirements

PHOTOMECHANICAL SERVICES

- STAR-REPRO® Drafting Systems—for pin-bar, overlay and team drafting
- Precision camera work up to 48 in. by 72 in.; enlargements and reduction to 10 times
- Expert negative retouching
- Contact prints
- Autopositives
- Washoff tracings
- Printed circuit assembly boards, master plate drawings
- Scissor drafting
- Photo drafting
- PencilTone® reproductions
- Restorations
- Xerox 1860 translucent vellum and Mylar intermediates, paper prints and offset masters
- Xerox 600 enlargements from 35mm microfilm
- Xerox 2080 prints—reduced or enlarged

BLUE PRINTS, WHITE PRINTS, SEPIA INTERMEDIATES ON PAPER OR MYLAR
SPECIALTY PRINTS FOR PRESENTATIONS

PHOTOSTATS AND XEROX PRINTS

OFFSET PRINTING

- Specification sheets and booklets
- Sales literature
- Stationery and forms
- **MAGI-COPY*** fast printing service—ideal for architectural and engineering specifications

105mm and 35mm MICROFILM SERVICE
DRAFTING SUPPLIES AND FURNITURE

We do it all under one roof.

ALFRED MOSSNER COMPANY • FOR MORE THAN 60 YEARS

Registered architects are invited to submit projects representing state of the art in health care facility design. Entry forms are due at AIA headquarters Mar. 15. For details contact Mike Cohn, AIA professional services center, 202/626-7366.

▼
The 1988 Exhibition of Architecture for Justice, sponsored by the AIA Committee on Architecture for Justice and the American Correctional Association, will spotlight outstanding examples of justice facilities. Registered architects are invited to submit projects they feel represent the state of the art in justice facility design. The AIA and ACA will publish an illustrated catalog highlighting selected projects. Entry blanks are due at AIA headquarters April 15. Details: Mike Cohn, AIA professional services center, 202/626-7366.

▼
"State Requirements Survey for School Construction K-12," developed by the AIA Committee on Architecture for Education, analyzes the involvement of all 50 state governments in the design and construction of educational facilities. The level of state government participation in school facility planning, design, and construction is identified. The report details each state's funding methods, pre-planning and planning requirements, school site sizes, student/teacher ratio, building area allowances, urban vs. suburban sites, construction document reviews, and other construction information. An Asbestos Appendix identifies current state requirements for the treatment of asbestos in education facilities. Copies are available at \$35 for members, \$115 non-members, from the AIA bookstore. (Order #R652.) Call 202/626-7475.

▼
"Getting Project Managers to Think and Act Like Principals," a two-day program offered by PSMJ in Washington on Feb. 19-20, will help design firms impress clients, increase profits, and bring every project in on time and on budget. PSMJ is introducing a special section that deals with how PMs should manage computers. PSMJ promises an information-packed program that includes: nine time-saving tips on meeting participation, identifying what makes a client/boss/subordinate "tick," and how to collect from even the most stubborn client. For more information and reservations, contact Elisa van Dam at PSMJ, 1-800/537-PSMJ.

Landscapes By Design inc.

Landscape Architecture

- Landscape Architectural Services and Consultation to the Design Community
- Design and Construction Management of Commercial Developments, Corporate Campuses and Private Residences
- Master Landscape Plans
- Construction Drawings/Bid Administration
- Cost Estimation
- Specifications
- Construction Observation
- Video Imaging/Autocad

450 East Devon Avenue Itasca, Illinois 60143 312-250-8440

ARCHITECTS - ENGINEERS

Another money saving first from HUEY REPROGRAPHICS!
 36" Shacoh copier installed March 1983 at 19 South Wabash Avenue

SHACOH® 36" WIDE XEROGRAPHIC COPIES

- | | |
|-------------------------------|--------------------------------|
| ■ Paste-up, Scissors Drafting | ■ Enhance CADD Plots |
| ■ Get Mylars Fast | ■ Get Vellums From Whiteprints |
| ■ Restore Old Drawings | ■ Enlarge/Reduce Drawings |

SAVE TIME—SAVE MONEY

Other Services . . . Since 1915 Complete Reprographic Services

- | | |
|---|---|
| • Pin-register Overlay Drafting Repro Specialists | • Specifications, Booklet, Report Xerox 9900® Duplicating |
| • Whiteprints • Sepias • Blueprints | • Offset Printing |
| • Reproduced Tracings. Fixed Line, Washoff | • HP Pen Plotting |
| • PMT® Stats | • Huey Diazo Papers & Films |
| • 2080 Xerox® Copies | • Huey Tracing Papers & Films |
| • Shacoh Copies | • Huey Deluxe Drafting Tables |

CALL FOR MORE INFORMATION

HUEY®

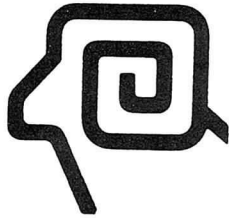
MAIN PLANT
19 S. WABASH

782-2226

RIVER NORTH
435 N. LaSALLE

644-2264

PROVIDING REPROGRAPHIC SERVICES TO CHICAGO ARCHITECTS AND ENGINEERS SINCE 1915



RAMM BRICK, INC.

INDUSTRIAL
INSTITUTIONAL

RESIDENTIAL
PAVING

COMMERCIAL
MUNICIPAL

FOR EXCELLENCE IN BRICK • SINCE 1914

312/352-5500 223 Tilden Ave., P. O. Box 9, LaGrange, IL 60525

**What we can do
will amaze you**

At Foliage Design Systems, we know that plants are an essential part of any setting where people live, work or play.

No other interiorscaping company offers a longer list of quality foliage related services.

- Our professional design consultants will save you time and money by tailoring an interiorscape to your environment's individual needs.
- We expertly install and regularly schedule maintenance by experienced horticulturists to keep your interiorscape looking healthy and attractive all year long.

- We provide colorful flowering plants that include a guaranteed regular replacement service.
- Our silk, dried and artificial foliage is so lifelike, you'll have to touch them to make sure they're not growing.

Wedding ceremonies and receptions, grand openings, conventions, parties and Bar Mitzvahs...no occasion is complete without our short term plant rentals.

For over 16 years, Foliage Design Systems has been the one source for all of your interiorscaping needs. So, call the office nearest you today...We think what we do will amaze you.

Not all services available from all offices.

312-620-4808

foliage Design Systems
Nature indoors... Nationwide.

Member Florida Nurseryman and Growers Association/ Associated Landscape Contractors of America

▼
"Hyde Park House," which picks up in home renovation fairs where "City House" left off, is now accepting applications for exhibitors and demonstrators. The fair, presented by the Hyde Park-Kenwood Development Corp., is slated for Sunday, April 10. For more information, call Alexandra Mezey, 667-3932.

▼
"Landscape Drawings of Five Centuries, 1400-1900: From the Robert Lehman Collection of the Metropolitan Museum of Art" continues at the Mary and Leigh Block Gallery at Northwestern University until Mar. 20. The exhibition includes more than 80 drawings, with works by Campagnola, Altdorfer, Bruegel, Rembrandt, Corot, van Gogh, Renoir, Seurat, and others. A series of Monday evening guest lectures has been scheduled in conjunction with the exhibition: On Mon., Feb. 1, 7:30 p.m., Larry Silver, professor of art history at Northwestern will speak on "Peter Bruegel: Landscape Architect." Silver will explore the contributions that the artist made in the field of landscape drawing of the Low Countries, concentrating on Bruegel's uses of landscape as direct compositions from nature, recomposed reworkings of landscapes and preliminary designs for published engravings. S. Hollis Clayson, professor of art history at Northwestern, will lecture on "The Interplay Between Fact and Idea in Landscape Drawing: Dutch, English and French Examples" on Mon., Mar. 14, 7:30 p.m. Sunday lectures, which begin at 2 p.m., include the subjects of John Ruskin on Feb. 7, the Barbizon Landscape on Feb. 28, and Neo-Impressionist Landscape on Mar. 13. The Block Gallery is at 1967 Sheridan Rd., and is open 10:30 a.m. to 5 p.m. Tues.-Sat., and from noon to 5 p.m. on Sunday. Admission is free. 491-4000.

▼
Final membership totals for 1987 have been tallied, and they show a 4% growth in 1987. The Institute now has more than 52,000 members: 40,428 regular (AIA) members, 8,365 associate members, and 3,586 members emeritus. Member-Owned Firms - 15,581. Firms with one licensed architect - 9,967; with two-four licensed architects - 4,116; with five-nine licensed architects - 974; with 10-20 licensed architects - 355; with more than 20 licensed architects - 169.

Hundreds of
ARCHITECTS, ENGINEERS & DESIGNERS

Rely on

NEAR NORTH REPRODUCTIONS INC.

FASTEST BLUEPRINTING
IN CHICAGO

944-4234

Fastest growing blueprint company in the world

Over 10,000 blueprints daily

"Fastest blueprinting company in town."

Bob Wallace WBBM-TV Two on Two

The Near North Reproduction Building

206 West Division

(Near Wells and Division)

Free
Parking

Pickup &
Delivery

Superior
Facilities

Board of Directors

PRESIDENT
Cynthia Weese, AIA

FIRST VICE PRESIDENT
Frank Heitzman, AIA

VICE PRESIDENTS
Neil Frankel, AIA
Margaret McCurry, AIA
Robert Wesley, AIA

SECRETARY
Steve Weiss, AIA

TREASURER
Sherwin Braun, AIA

DIRECTORS - Through 1988
John Syvertsen, AIA
Werner Sabo, AIA

DIRECTORS - Through 1989
Leonard A. Peterson, AIA
Jim Stefanski, AIA

DIRECTORS - Through 1990
Harry Hunderman, AIA
Anders Nereim, AIA

PAST PRESIDENT
Edward K. Uhlir, AIA

ASSOCIATE DIRECTOR
Eva Maddox

PROFESSIONAL AFFILIATE REPRESENTATIVE
Lee Benish

ILLINOIS COUNCIL DELEGATES
Robert Clough, AIA
Kristine Fallon, AIA
Ray Griskelis, AIA
Lee Weintraub, AIA
Robert Robicsek, AIA

ILLINOIS COUNCIL ALTERNATES
Ray Griskelis, AIA
Robert Robicsek, AIA
Lee Weintraub, AIA
Jim Zahn, AIA

STUDENT AFFILIATE REPRESENTATIVE
Ken Colliander

Chicago Chapter Staff

EXECUTIVE DIRECTOR
Jane Lucas

FOCUS EDITOR/ADVERTISING SALES
Annette Kolasinski

PROGRAM COORDINATOR
Mary Beth Carroll

BUSINESS MANAGER/MEMBERSHIP DEVELOPMENT
Beverly Meland

MEMBERSHIP SERVICES PUBLIC INFORMATION
Regina Hoesli Rooney

DATA PROCESSING COORDINATOR
Cynthia Gordon

DOCUMENTS SALES
Sandra Lusars

CHICAGO CHAPTER

A M E R I C A N I N S T I T U T E O F A R C H I T E C T S

53 West Jackson
Suite 350
Chicago, Illinois 60604
312.663.4111

Second Class
Postage Paid
at Chicago, IL

Chicago Chapter AIA
53 W. Jackson #350
Chicago IL 60604

*Received in o/c.
Mar., Feb. 8*