

MAY/JUNE 1969



unrest?

YOUR CONCEPT IS LAC
ING IN HIS

5
4
3
2

BIGGINS OF ARCHITECTURE AND

Concrete is good for you



Cars up. Costs down.

Construction costs: rising. Land costs: rising.

Real estate taxes: rising. The inevitable answer: roof deck parking.

The logic of this simple concept is overpowering.

Less land is needed. Therefore land costs are cut.

The need to build large parking areas is eliminated.

Therefore total construction costs are cut.

There is less improved land. Therefore taxes are cut.

There are other advantages as well.

Greater employee and customer convenience.

Lower fire insurance rates. A stronger, sturdier building in which concrete is the basic material.

You see, concrete is good for you.

For complete information on the roof parking concept, write us. Portland Cement Association.



1214 South 20th St., Birmingham, Alabama 35205
PCA—IMPROVING AND EXTENDING THE USES OF CONCRETE

PORTLAND CEMENT
ASSOCIATION



Save a cool \$5 a month on whole-house air conditioning with an electric heat pump.

If your home has six or seven rooms and about 1800 square feet, electric air conditioning costs approximately 66¢ a day. This adds up to an average saving of about \$5 a month, compared to gas operating costs. Day after day, regardless of the outside heat and humidity, every room in your home stays cool, fresh and comfortable.

You save on cooling with the electric heat pump, whether you have a small home or a mansion. Studies made all over Alabama, from Mobile to Birmingham, show average savings of 21% over gas. And the electric heat pump works year-round. Next winter it will provide economical, carefree electric heat for your whole home.

We'll gladly give you an accurate estimate of the operating cost for your home. Learn how inexpensive it is to enjoy the luxury and modern convenience of the electric heat pump. Phone or send coupon for our free brochure.

Advertising Department
Alabama Power Company
P. O. Box 2641
Birmingham, Alabama 35202

Gentlemen:

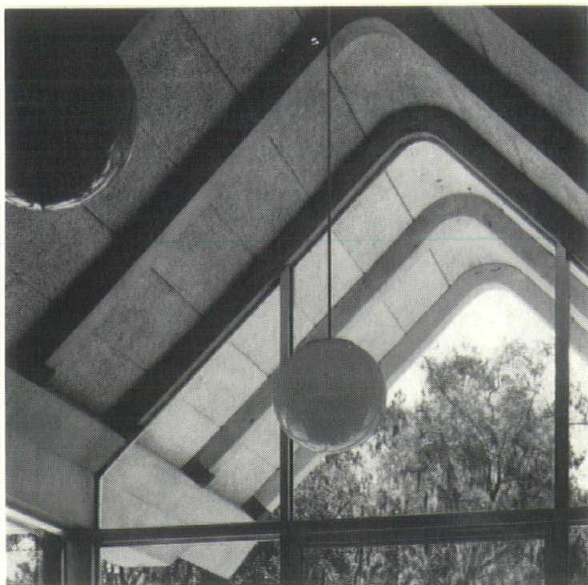
Please send me a copy of your brochure, "The Facts about the Electric Heat Pump".

Name

Street Address

City State Zip

Alabama Power
Cools Your Summer, Warms Your Winter



NOW PERMADECK® ROOF DECKS ARE CERTIFIED

Permadeck is made by forming long, chemically treated mineralized wood fibers with Portland Cement into planks, tile or formboard possessing unique properties—strength, water resistance, fire resistance, insulation, high reflectivity and attractive appearance.

And now Permadeck roof decks are certified.

Certified Permadeck roof decks are applied only by Approved Permadeck Applicators who have the proper experience and equipment to assure that architectural specifications are faithfully followed.

At the plants, a rigid testing program is followed to assure that the Permadeck equals or surpasses published standards. Accurate job records concerning applications are kept by the Approved Permadeck Applicator.

When the job is completed, we and the applicator jointly certify that the Permadeck was properly manufactured and installed according to architectural specifications.

All of which assures you of satisfactory long term performance.

For complete information, call your Permadeck or Zonolite representative or write us.

ZONOLITE® Concrete Products Division
W. R. Grace & Co.
 P.O. Box 130, Brunswick, Georgia 31520.
 Phone (912) 265-6900
 P.O. Box 338, Terry, Mississippi 39170.
 Phone (601) 878-5565

STACO PAINT has moved:

New address: 2700 25TH STREET NORTH
BIRMINGHAM, ALABAMA

New phone: TELEPHONE 328-6331

We can thank the acceptance of our product by the architects, engineers, and contractors for the continually growing volume that has necessitated our constructing larger plant, warehouse and office buildings. These new modern quarters will facilitate the continuation of the service to our customers that is the constant aim of our organization.

You are invited to visit us in our new home or to call at any time: L. Vastine Stabler, L. C. Burks, Philip H. Boyd, Fred Davis, James Snyder, Bill Hathcox, Forrest Sandy, Julian Rosdick, Claude Kersh or any of our 30 member staff.



STABLER PAINT MFG. CO.
INCORPORATED

2700 25th St. N., Birmingham, Ala.
Telephone 328-6331



*Serving the
Architects and
Builders of
the State*

**ALABAMA
INDUSTRIES**

**CONCRETE
ASSOCIATION**

ACIA

P. O. BOX 4157
401 BELL BUILDING
MONTGOMERY, ALABAMA

*Building for Permanence
with Concrete Products*

TELL IT LIKE IT IS—An Editorial

"What's it all about, Alfie?" and "where's the playground, Susie?" are questions being asked by current song hits which echo a much deeper social phenomena being voiced by those who ask questions to which answers have been pre-conceived. While dissent (like any other expression of human yearnings) may stir up anger and strife, cause embarrassment or fear, none would dare deny the right to do so in a free society.

The ALABAMA ARCHITECT in the next few pages becomes an avenue of expression for the Architectural students at Auburn to say what they will, to ask questions and give answers, to seek and to search for direction. Our earnest hope is that they find it.

THE ARCHITECT'S CHANGING IMAGE

The American Institute of Architects is not a social club. In Alabama, membership in the A. I. A. is promoted for all classifications. By having as large a representation as possible of the architectural community, the A. I. A. can best meet its responsibility to its membership.

The Architect, as an individual, is generally not well equipped either by training or by inclination to do an adequate job with public relations. Many people cannot pronounce the word "architect," much less have an understanding of what the architect does. Most people think the architect makes a lot of money because of the fee he applies to the relatively large lump sum cost of a building. Even when the fee is low and the cost of construction is not large, the money derived from this fee looks rather large to the layman.

The A. I. A. can, and should be, the architects' public relations tool. Local Chapters and the State Council, working in concert with the Institute, can advance the cause for good architecture throughout the state. The Chapters in particular can, by bringing the architects together into a thoughtful group, involve the architectural talents of the community in areas that need the architects' approach.

All of us are aware of the traditional services offered by the A. I. A. to its members. It is from this relatively new area of public concern, assisted by a good public relations program however, that I feel the "new image" of the architect will evolve. As we awaken to the new challenge and to the uncovered abilities we have as a group to meet the challenge, we will find that our image has already changed and that not only the public, but also we as architects, have a better understanding of architecture.

Oscar Pardue
President
Alabama Council of Architects AIA

VOLUME 5

NUMBER 3

ALABAMA ARCHITECT

MAY-JUNE 1969

THE ALABAMA ARCHITECT IS PUBLISHED FOR THE ALABAMA COUNCIL OF THE AMERICAN INSTITUTE OF ARCHITECTS TO ADVANCE THE PROFESSION OF ARCHITECTURE IN THE STATE OF ALABAMA.

IN THIS ISSUE

- 5 TELL IT LIKE IT IS
An editorial
- 5 THE ARCHITECT'S CHANGING IMAGE
President Pardue looks at the changing view of the profession
- 6 AUBURN ARCHITECTURAL STUDENTS VIEW THE SCHOOL AND THE PROFESSION OF ARCHITECTURE
A challenging look at what's happening from the student viewpoint
- 13 AUBURN ARCHITECTURAL STUDENTS TOUR FOREST PRODUCTS INDUSTRIES
A look at the uses and possibilities of wood products for construction purposes
- 14 1969 HONORS DAY
Listing of award recipients
- 15 NEW DEAN NAMED AT AUBURN
Edwin Keith McPheeters to assume post on September 1, 1969

ALABAMA COUNCIL OFFICERS

OSCAR W. PARDUE, Birmingham, President; ARTHUR PRINCE, Mobile, Vice-President; WILLIAM M. PEARSON, Montgomery, Secretary; DR. J. INGRAHAM CLARK, Auburn, Treasurer.

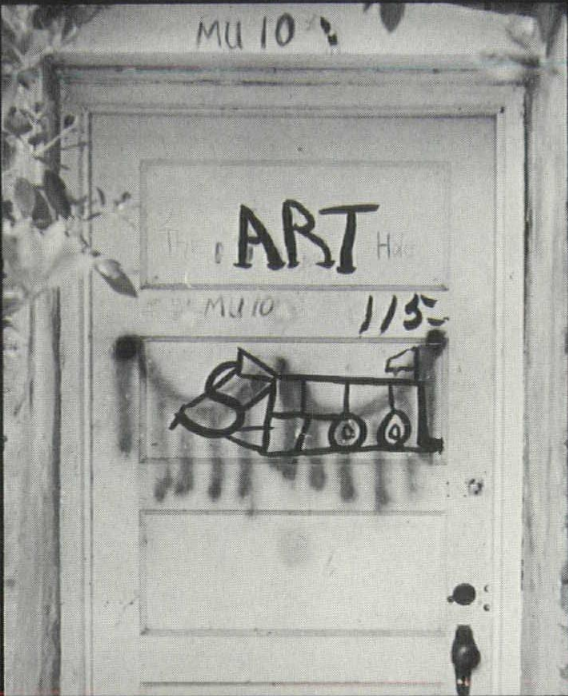
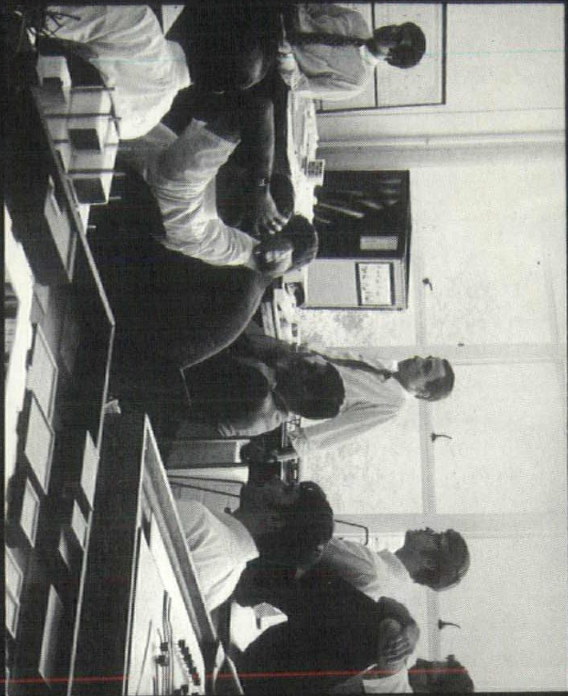
Councillors: CHARLES A. MOSS, JR., DONALD MORRISON, JR., WILFRED J. SMITH, WILLIAM F. LETSON, DILLON MARCH, JOHN B. McDONALD, DONALD L. HORTON, JIM SEAY, WALTER HALL, MALCOLM SMITH.

EDWARD BONDURANT, AIA, Managing Editor, Birmingham

FRITZ WOEHLE, AIA, Editorial Advisor Birmingham

JAY LEAVELL, Hon. AIA, Executive Secretary/Publisher, Montgomery

The ALABAMA ARCHITECT is the official publication of the Alabama Council of Architects of the American Institute of Architects and is published bi-monthly. The annual subscription rate is \$3.00 per year. Appearance of names and pictures of products or services in editorial advertising copy does not constitute endorsement by either the A.I.A. or the Council. Information regarding advertising rates and subscriptions may be obtained from the office of the Council, Capitol Towers, South Court at Clayton Street, Montgomery, Alabama, 36104. Telephone (205) 264-5305.



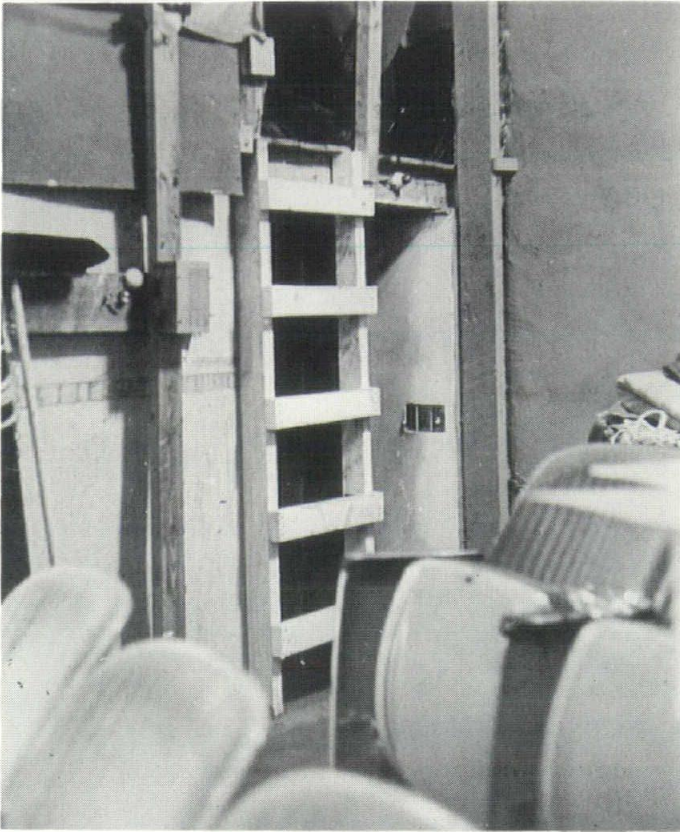
THE SCHOOL OF ARCHITECTURE AND
THE FINE ARTS, AUBURN UNIVERSITY,
AUBURN, ALABAMA, NEEDS HELP.



1. Facilities in the Departments of Art, Theatre, and Music are deplorable. The buildings are old, overcrowded and makeshift and there is also a serious lack of equipment. 2. The Department of Music has never met requirements for accreditation. This is due primarily to inadequate facilities.

3. The School of Architecture, which was one of the best in the nation in the 1950's, is now concerned with the possibility of losing its accreditation.

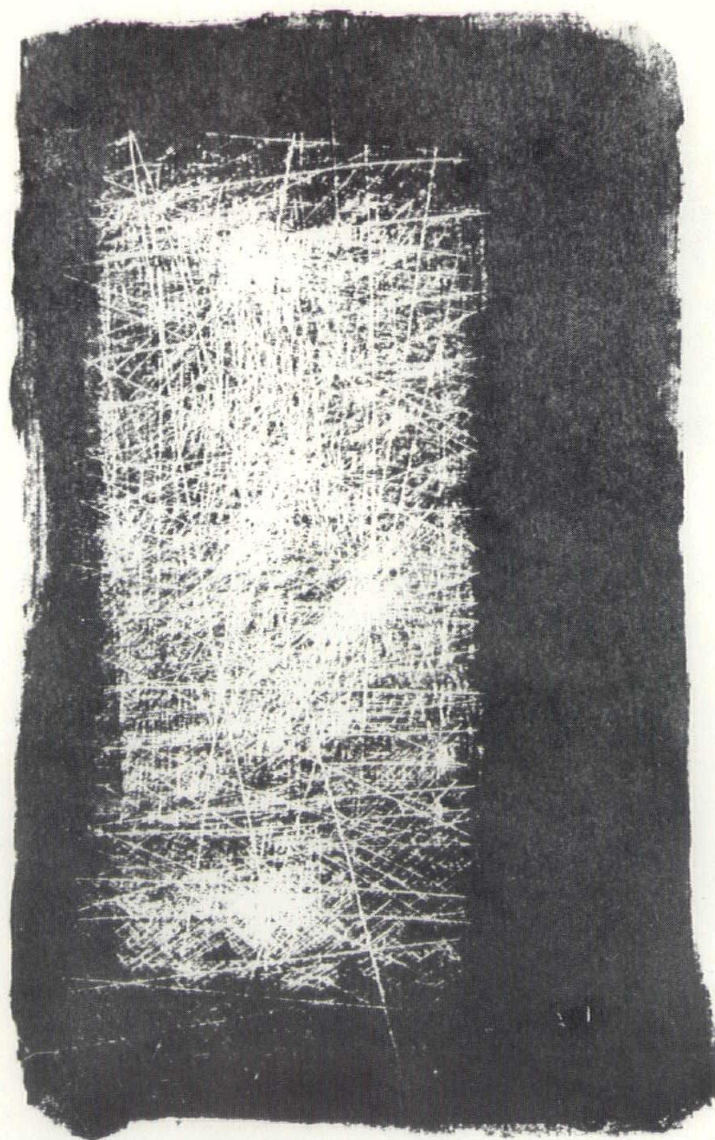
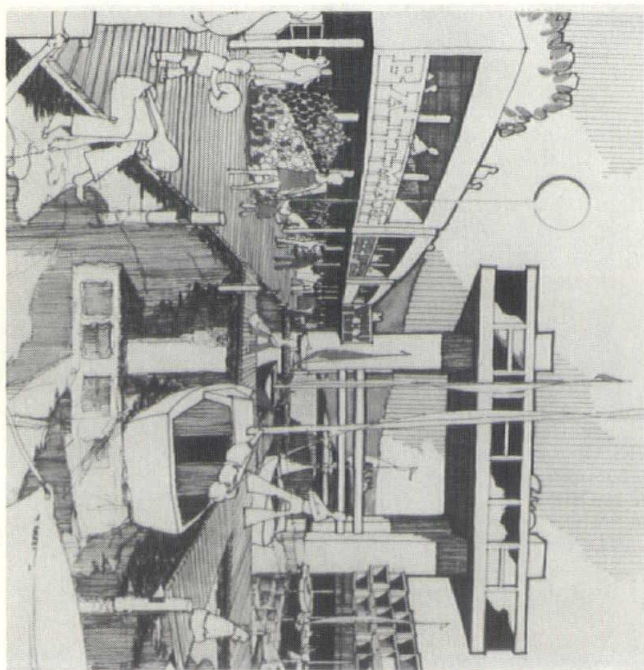
4. The average salary of the professors in the School of Architecture and the Fine Arts is below the University average. 5. There is not one strong, active graduate program within the School of Architecture and the Fine Arts. Yet every other department at Auburn University, but one, has an active program of graduate studies. 6. While there has been an average turnover of two deans per school at Auburn since World War II, the School of Architecture and the Fine Arts has had five deans plus two acting deans and is currently awaiting another. The average tenure of a dean in the School of Architecture and the Fine Arts is 3.7 years. The average tenure in any other school in the university is 27.3 years. The Auburn University Bulletin states that one purpose of Auburn University is "To conserve our cultural heritage through support of scholarly and creative work in the humanities, social sciences, and the arts so that the University may serve both students and citizens of the state as a focal center where the cultural traditions of our civilization are kept alive and transmitted to the future." It is the conclusion of the Committee of Concerned Students that for Auburn University to meet its commitment as stated in the Auburn Bulletin, changes need to be made in the present situation. Auburn is failing the state and its students by not fulfilling this particular purpose, and by doing so, has failed in its fundamental purpose as "a community of learning where knowledge may be preserved, disseminated and increased."

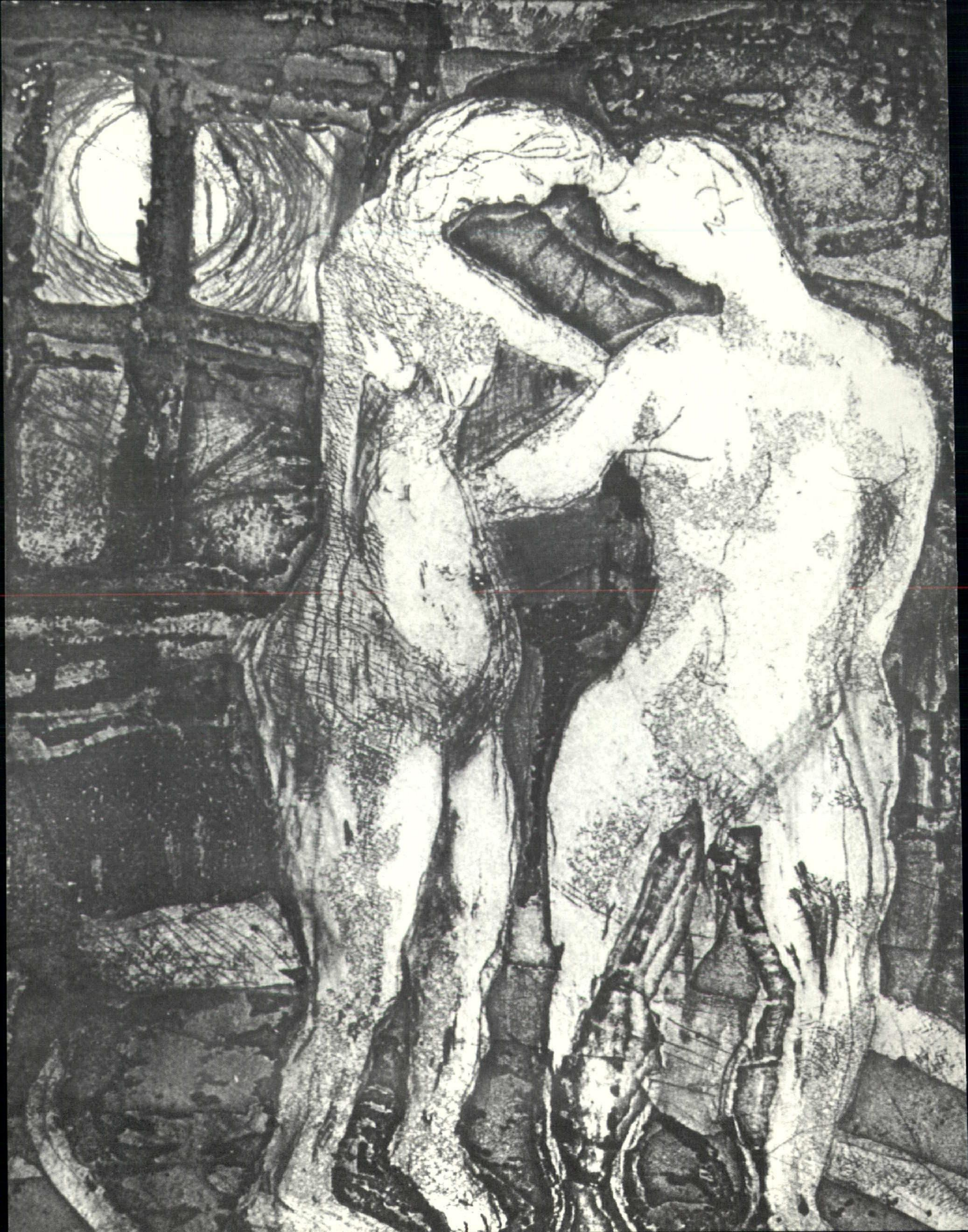


"Building and grounds policy on theatre repairs is 'wrap it with tape, put it behind the boards; nobody'll see it there.' The whole thing is that way. It'll blow up any second — it's just wild." "The professor can't change anything. When a faculty member becomes interested in changing the system, he gets bumped. I mean they knock him off — they say 'you're not coming back next year'." "The world is changing; Auburn is not. She's lagging behind in intellectual development; she persecutes the arts as a burdensome stepchild necessary only because they supply another link toward being a major university."

REBEL
OR

CON
FIDENT





AUBURN ARCHITECTURAL STUDENTS TOUR FOREST PRODUCTS INDUSTRIES

Sixty-five architectural students from Auburn University, accompanied by their professors and by Dr. J. Ingraham Clark, Dean of the School of Architecture and the Arts, recently completed a tour of plants engaged in the manufacturing of wood material and components used in the building industry. The tour was part of a forest industry educational program designed to acquaint future architects with the availability and versatility of wood products for construction purposes. It is sponsored by the Alabama Forest Products Association in cooperation with the Southern Pine Association.

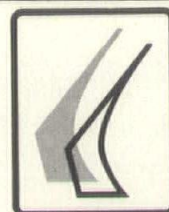
The program began with a tour of the Normandale Methodist Church, conducted by William Pearson, Architect for the structure, where the students saw the practical use of exposed laminated wood beams and arches used as the primary structural material.

At Greenville, Alabama, students viewed the manufacture of these laminated beams at Timber Structures, Inc., under the guidance of Carlton Whittle, an official of the plant. Later, Timber Structures was host for the group at a luncheon.

The afternoon program included a tour of Union Camp Corporation Woodlands near Chapman, where students saw timber in various stages of growth from seedlings to mature trees, in keeping with land management practices carried out on company lands. The students then toured the sawmill and plywood manufacturing plants of the Building Products Division of Union Camp Corporation at Chapman, under the general supervision of local plant officials, where they observed the manufacturing of Southern Pine lumber and plywood.

That evening, Union Camp was host at a steak dinner for the group on company grounds.

Throughout the tour, the students asked questions reflecting a keen interest in the use of Southern Pine as a primary construction material for use in structures with modern architectural designs.



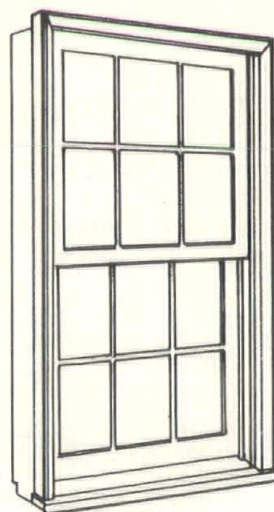
Castone

Specialists in Architectural Precast Concrete

Castone Corporation/P.O. Box 747

Opelika, Alabama 36801/Phone (205) 745-3571

"PRIME LINE" wood windows



*primed outside...
natural finish inside*

Prime Line Window Units have a coating of high quality exterior primer paint. Sash are primed on exterior surface only, allowing interior to be finished natural or any desired finish. Prime Line units are factory glazed and completely weathertight.

Make sure you're getting outstanding quality. Specify National Woodworks "Prime Line".

Write for our brochure today.

National Woodworks, Inc.

2201 North 29th Avenue / Birmingham, Alabama 35207

BEBCO DISTRIBUTORS

ARMSTRONG FLOORS

MOHAWK CARPETS

The right floor covering for any job

*Let our trained personnel assist with your
specifications*

Birmingham
501 So. 12th St.
Phone 323-1694

Montgomery
704 No. Perry St.
Phone 262-6676

Project:

**CULLMAN
COUNTY
LIBRARY**

Architect:

Fred Renneker, Jr.
and Associates AIA

Bryson Construction
Company, Inc.
General Contractors



Post Office Box 1506 Decatur, Alabama

1969 Honors Day at Auburn

The Honors Day Banquet was held Friday evening, May 23, at the University Motor Lodge in Auburn. All award recipients and organizational officers were honored guests at this affair, which was combined with a meeting of the Auburn Chapter, A. I. A.

Oscar Pardue was present to make the Alabama Council Scholarship award; Hilton Watson, President of the Alabama Forest Products Association, made the Forest Products Design Award. Bill Donovan, District Manager of the Alabama Gas Company, awarded the Alabama Gas Travel Scholarship.

The following is a list of the recipients of awards:

AIA MEDAL—John Dickson Boegel; Ray Kohler Parker (runner-up).

ALPHA RHO CHI MEDAL—David Ray Beard.

AIA NATIONAL SCHOLARSHIP AWARD—Ray Kohler Parker.

AIA ALABAMA COUNCIL SCHOLARSHIP DESIGN COMPETITION AWARD FOR THIRD YEAR STUDENTS—Randy Diamond.

\$1500.00 ALABAMA GAS 4TH YEAR DESIGN COMPETITION AWARD FOR THIRD YEAR STUDENTS—1st prize—Robert Cain (\$1000); runners-up: (\$100 each) —Michael Benning, Rodney Whatley, Grady Woodson, William Leveille.

ALABAMA CONCRETE PRODUCTS ASSOCIATION GIFT FOR 3RD YEAR FIELD PROJECT—Prize money donated to Department of Architecture by students to buy photo equipment for the Department in the Fall.

REYNOLDS METAL DESIGN COMPETITION AWARD—Ray K. Parker.

ALABAMA FOREST PRODUCTS DESIGN COMPETITION FOR 2ND YEAR ARCHITECTURAL STUDENTS—1st prize—Larry Jones; runners-up: Rus Collins, Frank Oliver.

(Continued on next page)



This sheen is
wear and scratch
resistant... never
needs waxing or
polishing

Kurfes Kuramic Epoxy Flooring

Give your clients permanent tile-like beauty, lowest maintenance, and save them money with Kurfes Kuramic Epoxy Flooring... a continuous joint-free system. It's fire retardant; scratch-impact-and-chemical-resistant. Requires no maintenance except normal dusting or mopping; has no mortar joints to catch dirt. It costs 1/4 the price of terrazzo and 1/2 the maintenance cost. Create your own distinctive designs using Kurfes unlimited range of base and chip colors. Kuramic is easy to install, has minimum fumes or odors. For more information, contact J. B. Tabler.

KURFEES PAINT COMPANY
201 E. Market Street
Louisville, Ky. 40202



New Dean Named at Auburn

Dean Edwin Keith McPheeters of Rensselaer Polytechnic Institute at Troy, N. Y., will become dean of Auburn University's School of Architecture and Fine Arts on Sept. 1.

Dean McPheeters was a member of the Auburn faculty from 1951-54, leaving for graduate work at Princeton and later to teach at the University of Arkansas.

The Oklahoma native holds the Bachelor of Architecture degree from Oklahoma State University and the Master of Fine Arts from Princeton.

In addition to his broad experience in teaching and private practice with architectural firms, Dean McPheeters is also a painter and musician—Art and Music are two departments which will be under his administration at Auburn.

"We are especially pleased to welcome Dean McPheeters to Auburn University, not only for his experience and competence as an architect, but also for his expressed interest and participation in the other arts. His interest in the administration and development of a total fine arts program was a major factor in attracting him to Auburn," President Harry M. Philpott said.

Dr. Philpott noted that Dean McPheeters holds an outstanding record as a teacher and academic administrator. "His performance at Rensselaer which is recognized as having one of the traditionally outstanding programs in architecture in the nation assures us of his capabilities at these levels."

Dean McPheeters' architectural projects have included the Presbyterian University Center at Fayetteville, Ark., and portions of Designs for Worship 1968 which was featured in a national traveling exhibit of church architecture.

He has had exhibits of one-man shows of his watercolors, and from 1956-66 he was a member of the University of Arkansas-Fayetteville Symphony Orchestra. He is also co-author of two books.

Dean McPheeters has been a designer, draftsman and consultant for various architectural firms in Florida, Alabama, New Jersey and Arkansas and has practiced privately in Fayetteville, Ark.

He is a member of the Association of Collegiate Schools of Architecture, a corporate member of the American Institute of Architects and former vice president of the Eastern New York Chapter. He has also belonged to the Florida Artist Group and the Alabama Watercolor Society.

He is listed in Who's Who in American College and University Administration and in Who's Who in America. He belongs to several honor societies, including Scarab, Blue Key and Kappa Kappa Psi.

Dean McPheeters' wife, the former Patricia Foster of Tonkawa, Okla., holds a degree in architecture which she received in the same class as her husband. She also has a degree in mathematics.

The new dean was unanimously recommended to President Philpott by a faculty screening committee.

1969 HONORS DAY (Continued)

SCARAB—GEORGE DONALD TAYLOR MEMORIAL AWARD—Jack Wayne Nix.

FACULTY AWARD FOR THE OUTSTANDING 5TH YEAR ARCHITECTURE STUDENT—Arthur Berger.

KENNETH H. MURCHISON PRIZE—NATIONAL COMPETITION—Grady L. Woodson.



Dean McPheeters

MOSAIC

Stylon
CERAMIC TILE

WE'VE MERGED

To bring you the best possible products and service

MOSAIC

A DIVISION OF STYLON CORPORATION
FLORENCE, ALA.



GRESHAM, WILLIAMS AND JOHNSON CO.

General Contractors

P. O. BOX 1708
DECATUR, ALABAMA 35601

PEARCE, DEMOSS & KING, INC.

GENERAL CONTRACTORS

1308 Church Street, N. E.

Decatur, Alabama

SATISFIED CUSTOMERS — OUR BIGGEST ASSET

Paul Robertson

ARCHITECTURAL PHOTOGRAPHY

Many photos published in architectural forum & other publications

- EXTERIORS
- INTERIORS
- AERIAL
- COLOR
- BLACK & WHITE

NEW LOCATION

847 South Perry St.
Montgomery, Ala.
Phone 263-0413

Special attn. to work anywhere in the State

THE ALABAMA ARCHITECT

Capitol Towers — South Court at Clayton

P. O. Box 267 — Montgomery, Ala. 36101

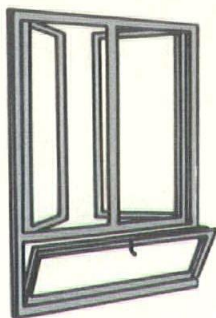
BULK RATE
U. S. POSTAGE

PAID
MONTGOMERY, ALA.
PERMIT NO. 130

Alabama's **CENTRAL** Source
for Technical Information
and Distribution of

Aluminum Windows

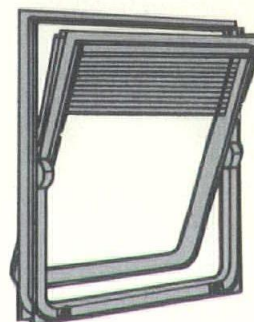
Representing the Nation's **MAJOR MANUFACTURERS** of
ALUMINUM AND STEEL WINDOWS



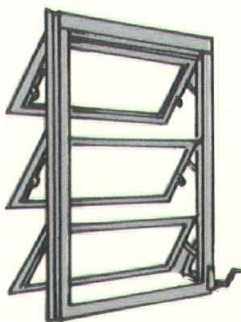
COMBINATION
CASEMENT



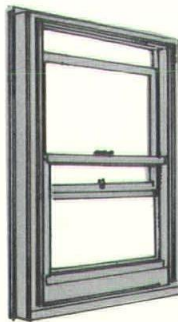
PROJECTED



THERMAL CONTROL



AWNING



DOUBLE HUNG

Also a Complete Line of CURTAIN WALL & Complete Line of BUILDING SPECIALTIES

Modernfold Folding Doors
Hotpoint Built-In Appliances
Nutone Built-In Equipment
Kwik-Set Hardware
Armstrong Hollow Metal

Majestic Fireplace Grills
Kitchen-Aid Dishwashers
Sun Control Grills
Kane Detention Screens
Nord Wood Doors & Columns



Southern Sash
SUPPLY OF MONTGOMERY, INC.

506 No. Court • P. O. Box 446 • Phone 265-3521 • Montgomery, Ala.