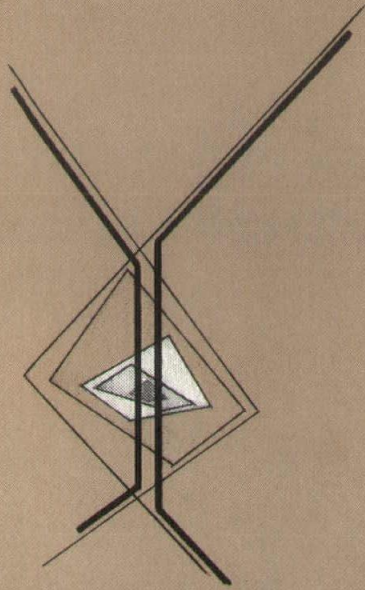


# ALABAMA ARCHITECT

NOVEMBER-DECEMBER 1967

ALABAMA COUNCIL

AMERICAN INSTITUTE OF ARCHITECTS



## THE THIRD ANNUAL CONVENTION

IN  
MOBILE, ALABAMA

### ARCHITECTURE: SCOPE

#### SERVICES IN THE SMALL OFFICE

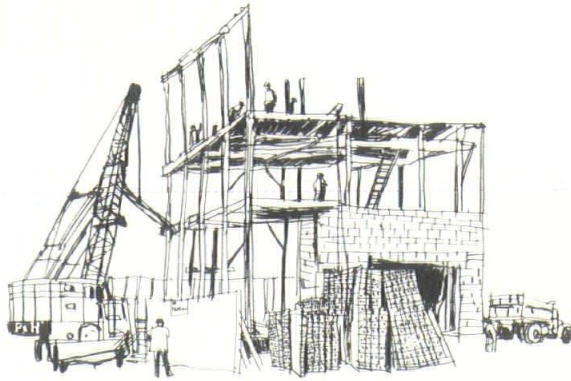
- LANDSCAPING IN THE BASE BID
- FURNISHINGS UNDER THE ARCHITECTS CONTROL
- PROJECT PROMOTION ASSISTANCE



C O N F E R E N C E

6 7





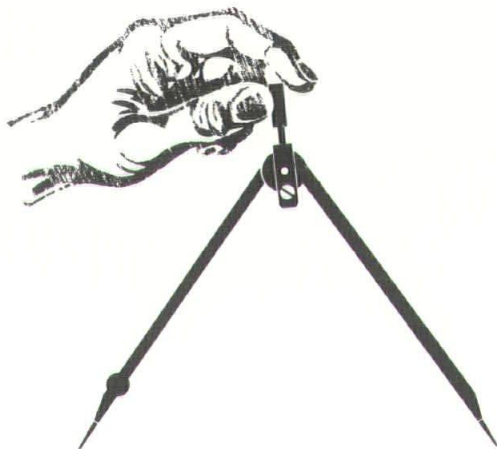
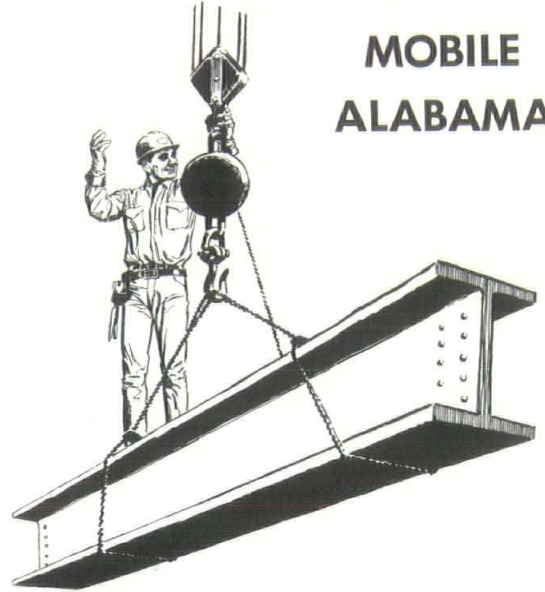
## **BEN M. RADCLIFF CONTRACTOR, INC.**

1704 BELTLINE HIGHWAY  
MOBILE, ALABAMA

## **B. H. MATHIS CONTRACTOR INC.**

3400-A Beltline Drive, North

**MOBILE  
ALABAMA**



**INSULATION ENGINEERS.**  
INCORPORATED

**SPECIALIZING IN**  
Application of Materials  
Involving Control of  
**HEAT - COLD SOUND**



- **MOBILE**
- **PENSACOLA**

**CONCEPTION STREET ROAD  
MOBILE, ALABAMA 36601  
POST OFFICE BOX 1883**



# YEAR-END REPORT

DONALD L. HORTON

President

Alabama Council of Architects

This column will be devoted to a "wrap-up" of the years activities of The Alabama Council. It has been a busy year, and I hope, a productive one.



The change-over three years ago to the Alabama Council and Four Chapters seem to have been an excellent change. Our dues structure is the highest ever but our organizations now represent a higher percentage of the profession than ever before. I think this indicates the profession's interest in the organization and its activities. Along with this the establishment of an executive secretary's office seems to have worked out well. Jay Leavell has done a yeomans job of "keeping the ends pushed up" and has also found time to organize and publish this bi-monthly magazine. This magazine has been "in the black" from the first issue and the March-April 1967 issue was selected as the Institute's "Document of the Month" for July 1967, and was distributed throughout the country.

This was a legislative year, hence there was much activity.

We assisted the Architectural Registration Board in modifying and improving, in the public interest, the State Law in regard to registration of architects.

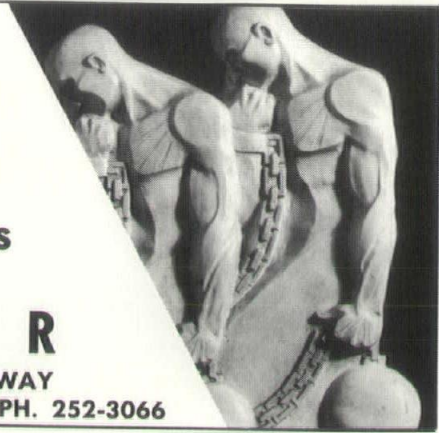
We assisted, along with the Southern Building Code Congress, in drafting a bill which will allow areas outside city limits to establish and enforce building codes.

The Council assisted Auburn University in the selection of a new Dean of the School of Architecture and Fine Arts. The new Dean, Dr. J. Ingraham Clark, has assumed his duties and is now busily engaged in setting up a program which we believe will be the best available. The Alabama Council continues to offer its support and help to the school in every way possible and believes that individual professionals are aware of the benefits to themselves and the students to be derived from their "becoming involved."

Our annual State Convention was held in Mobile, October 26, 27, 28th. The theme for the technical program was set to explore the "how to" of small offices offering expanded services such as landscaping, interiors, etc., to our clients.

I would like to close this last column of the year by thanking the membership for its help and support during the year and to all the committees for their hard work in making this a successful year for the Alabama Council of Architects.

**MODEL  
MAKER  
ANY MEDIUM  
40 YRS. EXPERIENCE  
TRADITIONAL & NEW  
SYNTHETIC MATERIALS**  
**Georges Bridges**  
**ARCHITECTURAL  
SCULPTOR**  
1820 GREEN SPRINGS HIGHWAY  
BIRMINGHAM, ALABAMA PH. 252-3066



ALABAMA'S LARGEST MORTGAGE BANKING OPERATION!  
**SPECIALISTS IN LONG-TERM FINANCING ON INCOME PROPERTIES**

- Apartments • Commercial Buildings • Medical or Dental Clinics
- Shopping Centers • Warehouses • Industrial Properties
- F.H.A. • V.A. • CONVENTIONAL • RESIDENTIAL LOANS
- Nursing Homes • Offices

**COBBS, ALLEN & HALL**  
MORTGAGE COMPANY, INC.

BIRMINGHAM Ph. 323-4481  
HUNTSVILLE Ph. 539-3701

MONTGOMERY Ph. 265-9556  
OPELIKA Ph. 745-6451

MOBILE Ph. 471-1526  
DECATUR Ph. 355-1441  
PENSACOLA Ph. 433-6569

## BEBCO DISTRIBUTORS

ARMSTRONG FLOORS

MOHAWK CARPETS

*The right floor covering for any job*

*Let our trained personnel assist with your specifications*

**Birmingham**  
501 So. 12th St.  
Phone 323-1694

**Montgomery**  
704 No. Perry St.  
Phone 262-6676



Tel. 262-8761

## PHOTOGRAPHY

- Aerial • Color • Mural
- Progress • Black & White

**Scott Photographic  
Services**  
458 So. McDonough St.  
Montgomery, Ala.

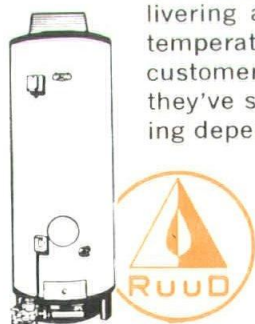
Assignments Accepted Over the State  
John Englehardt Scott, Jr.





## Colonel LaMatt showed Sam Gould a thing of beauty, too!

A Ruud Copper Sanimaster, of course! With Colonel LaMatt, what else? And Mr. Gould heartily agrees. Mr. Gould owns and operates the eight Gould's Beauty Salons in the Greater Memphis area. Hot water is vital to him—not only hot, but accurately controlled in temperature. Colonel LaMatt's team of water heater specialists recommended Ruud Copper Sanimasters, and for years they've been delivering an unfailing supply, at exactly the temperatures the beauty operators and their customers demand. Without trouble. And they've saved Mr. Gould dollars by functioning dependably and economically.



All over the South business and industry profit by Colonel LaMatt's advice on hot water problems—this has been going on for 32 years. LaMatt men have the training and the answers: Ruud Copper Sanimasters work more efficiently, last longer, and reduce your operating costs. Whether *your* water heater problem is big or small, let Colonel LaMatt help you. Call 522-9991, area code 504, collect TODAY.

### ***LAMATT AGENCY, INC.***

840 BARONNE STREET, NEW ORLEANS, LA. 70113  
AREA CODE 504 / 522-9991  
285 CUMBERLAND STREET, MEMPHIS, TENNESSEE 38112  
AREA CODE 901 / 324-3661

**WATER HEATER SPECIALISTS FOR LOUISIANA, ALABAMA, MISSISSIPPI, ARKANSAS, TEXAS & TENNESSEE**



## CONVENTION

### CREDITS

General Chairman	Marshall Fischrupp
Program	Edward Baumhauer
Meeting Facilities	Tom Bealle
Registration	Rod Slater
Products Exhibit	James Martin Smith
Honor Awards	Dillon March
Finance	J. Fred Dietz
Publicity	Nick Holmes Jay Leavell
Entertainment	Bill Donnell
Liaison	Arthur Prince
Graphics	Norman Grider
Ladies Auxiliary	Robbie Fischrupp



## LETTER FROM THE EDITOR

C. DEWEY CROWDER  
AIA PE  
Guest Editor

### Advantages and Disadvantages of the "Closed Shop"

**ARCHITECTURE SCOPE**—"Aiding and abetting the small architectural office in its constant striving to provide a full scope of services to meet the ever increasing demands of today's client"—an admirable theme and aim for any convention, Dean Clark, Ed Daugherty (landscaping), Louis Beal (Interiors), and rather liberal John Pritchard (Project Promotion) covered their subjects to the point of indicating a direction wherein the small office can provide these additional services quite well. What seemed to be missing, however, was some specifics as to "How in the heck we can induce the client to pay for these extra services?" Also missing was a clear definition of "Just who the client is turning out to be these days!"

In my book, the day of the old time client, an individual (or at worse a small committee!) expertly guided by that moulder of environment, the Architect, is long gone. Developers, contractors, financiers, large corporations, people expert at squeezing the last nickel from a project appraisal which provides for all project costs, except the Architect's fee—are taking over. And where does that leave the small office? ? ?

This small office, the prevalent one with 2.10349862 employees, if it remains a **closed shop** may be in a position to provide these additional services, in 2.10349862% of its projects. But what about the remaining percent of the cases? In

all probability this office will be forced to curtail and cut back even on normally accepted "normal services" if it is to make enough profit to be able to pay those 2.10 etc. employees, and compete in today's market for the bulk of architectural services being purchased by today's "client."

What about the **OPEN SHOP** on the other hand? Too many larger projects, the real plums in all of our Alabama communities, are being then plucked (after having been ripened by many of our civic minded local Architects) by the large out of State Architectural syndicates, package-putter-togethers, who finance, plan, construct, lease, and even place the toilet tissue in the holders for the client who thinks he is getting a real "deal." Who pays through the nose? the client, but the Architect also suffers.

Why not add to the list of aids to the small office an incentive, a plan, an idea, whereby he can join together with other small firms. Then, in collaboration, they can go after these plums which are there for the picking—to provide a better service, and with local talent!!!

Our Louisiana friends just recently completed a State convention in New Orleans with the theme "PRODUCTION FOR PROFIT." Let me, in closing, quote from some of their "teaser literature":

"You can uphold the high ideals of your profession and produce good architecture only if you are in practice. You can stay in practice only if you make a profit. By learning to cope with the pressures of the profit squeeze, by joining together as necessary, by budgeting job time, by controlling costs and expenses, by pricing your services properly, and by using technical manpower effectively, you may even be able to get out of debt."

## CONTENTS

Year-End Report	3
Letter from the Editor	5
Convention Credits	5
Architecture Scope	6
Furnishings and Interiors	7
Project Promotion Assistance	8
Landscaping in the Base Bid	9
1967 Honor Awards	10-13
A Summing Up of Awards	14
History of Architecture in Alabama	15-17
NCARB Southern Conference	19
Report of Commission on Architectural Design	22
Student Chapter, Auburn	23

November-December 1967

## ALABAMA ARCHITECT

Nov.-Dec. 1967 Volume 3, No. 6

Alabama Architect, official publication of the Alabama Council of the American Institute of Architects, is owned and published by the Council, an Alabama Corporation not for profit. It is published bi-monthly at the Executive Office of the Council, 501 Guaranty Savings Building, Montgomery, Alabama; telephone 264-4471 (area code 205).

Advertisements of products, materials and services adaptable for use in Alabama are welcome, but mention of names or use of illustrations of such materials and products in either editorial or advertising columns does not constitute endorsement by the Alabama Council, AIA. Advertising material must conform to standards set by this publication; and the right is reserved to reject such material because of arrangement, copy or illustration. Available at a subscription cost of \$3.00 per year. Single copies 50 cents. Roster issue \$2.00.

## ALABAMA COUNCIL, AIA

### Officers and Councilors 1967

President—Donald L. Horton—  
Montgomery  
Vice Pres.—A. Jackson Davis—  
Huntsville  
Secretary—Oscar W. Pardue—  
Birmingham  
Treasurer—Arthur Prince—Mobile  
Past Pres.—Edward B. Baumhauer—  
Mobile  
Exec. Sec.—Jay Leavell—Montgomery  
**Birmingham Councilors:**  
Fritz Woehle (President), Paul Speake,  
Nelson Smith  
**Mobile Councilors:**  
John McArthur (President), Thomas G. Shepherd  
**Montgomery Councilors:**  
William Pearson (President), Howard McElhaney, William G. McMinn  
**North Alabama Councilors:**  
Thos. A. Jones (President), Joe F. Milberger



The intent of the 1967 Convention Seminars was to provide a discussion of a practical nature directed more to the small practice. More and more, as architects, we are experiencing clients demanding services beyond that which we now call normal services. As a result of this, we are once again made aware of the importance of continued education. The client of today is demanding and expecting the architect to provide a complete building, and this of course includes furnishing landscaping—and in many instances assistance in promoting, and even participation in a project. Since the formal education of most of us has been seriously lacking in these disciplines, and since qualified personnel is virtually non-existent within this state the responsibility of adequately processing these functions must be borne by the architect.

Still another aspect of the architect entering into these areas that is of equal importance, is that of continuity of design. Many examples can be shown which clearly illustrate this lack of continuity as a result of the group effort with no decisive control by the designer, and it is only through this control that a satisfactory total design can be accomplished.

It was the desire that these Seminars be used as a vehicle to discuss the possibilities that exist within these areas, and to discuss in detail the mechanics of processing these functions within the limits of small practice.

The individual must of course make his own evaluation of the Seminars.

In my own mind some questions were answered,

some not. The most overriding aspect of the discussions was the apparent critical need for continued education, not only in the areas mentioned above, but in all areas related to the operation of a small architectural practice.

If the small office is to survive, in the growing atmosphere of "bigness", it must prepare itself to deal with the profit squeeze, partially thru a reappraisal of the traditional methods of processing the total architectural operation, and partially thru the creation of new fee sources in other areas such as mentioned above. It likewise must prepare itself to deal with the ever expanding requirements of clients well versed in the services of the package dealer and others. The small office must equip itself to fill the role of the family doctor rather than the specialist.

How can this continued education be accomplished? The various State Councils, in conjunction with the local Schools of Architecture, could develop a long range program of concentrated Seminars that could be held in a location readily accessible to all within a state, and could be financed partially through the Council and partially through registration. Since a program of this nature would be designed to serve the architects, it should be the architects through their various State Councils who should bear the responsibility for initiating and developing such a program.

I fail to see any satisfactory alternative.

—Marshall Fischrupp  
General Chairman  
1967 Alabama Architects Convention

## AN EXPRESSION OF THANKS TO EXHIBITORS

Too often, we as architects, fail properly to express due credit to those many exhibitors and sponsors who, not only make our convention possible through their generous contributions to the convention, but who, throughout the rest of the year, remain as our right hand men, to supply assistance, design data, factory and production aid, etc. Don't fail, the next time you have the opportunity to thank these sponsors personally and more concretely, by studying and specifying their products:

### EXHIBITOR'S BOOTH

#### Booth No.

1. Associated Manufacturers
2. Textured Coatings of America
3. Bobrick Dispensers
4. Hollywood Window Co.
5. Alabama Power Co.
6. Electric Heating Asso., Inc.
7. The Miller Company
8. Libby-Owens-Ford Glass Co.
9. Kawneer Co.
10. Alabama Materials Co.
11. General Equipment Manufacturers
12. (Bar)
13. Plastic Clad Corporation
14. Indurall Coatings, Inc.
15. Specialty Contractors, Inc.
16. Ruberoid Co.
17. Bickerstaff Clay Products Co., Inc.
18. Armstrong Cork Co. (Cancelled)
19. Mobile Gas Service Corp.
20. Crossfield Products Co.
21. Burton Brothers
22. Natco Corporation
23. Mobile Paint Manufacturing Co.
24. Southern Sash Supply of Montgomery, Inc.
25. AESCO Steel
26. Acousti Engineering of Ala., Inc.
27. Ideal Cement Co.
28. Bonitz Insulation Co., of Alabama
29. Owens-Corning Fiberglas
30. James H. Emack
31. American Olean Tile Co.
32. Stylon Corporation
33. American Institute of Steel Construction, Inc.
34. The Georgia Marble Co.
35. Garner Stone Co.

### Room

#### No.

- 200 Gwin Office Products, Inc.
- 202 Knoll Associates, By Gwin Office Products, Inc.
- 204 Jens Risom Design, Inc., By Gwin Office Products, Inc.

### SPONSORS

- Exhibitor Party:  
Alabama Concrete Industries Association
- Champagne Party:  
Natco Corporation  
Portland Cement Association  
Brabner Building Specialties, Inc.  
Buck Taylor Manufacturers Sales
- Orchestras:  
Southern Prestressed Concrete, Inc.  
Shearer & Rayford, Inc., Manufacturers Agents



## FURNISHINGS UNDER THE ARCHITECT'S CONTROL

**ISD**  
INCORPORATED



LOUIS M. S. BEAL  
Executive Vice President

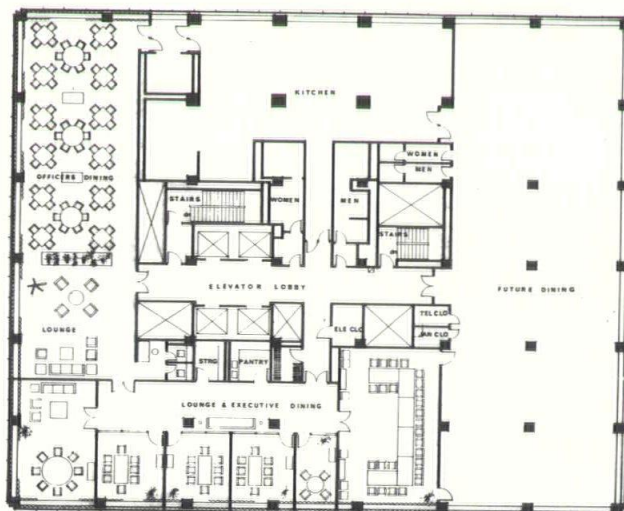
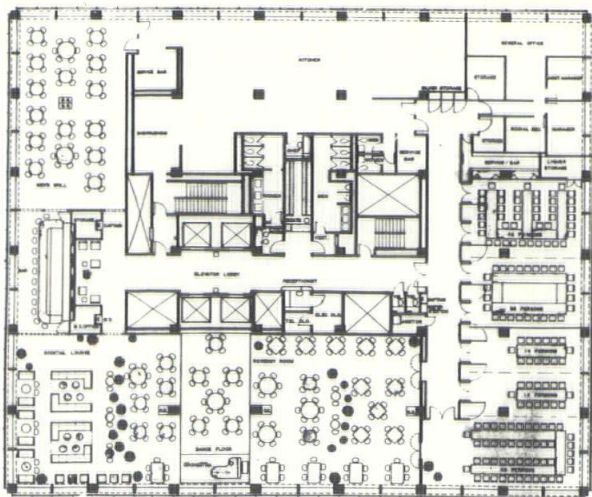
ISD was established not only to perform the services of planning from the inside out but to provide architects and clients with professional consulting and interior design services to coordinate the interiors with the building without any conflict of interests in the sale of furniture and furnishings.

On large projects, architectural firms call on firms such as ISD to look after the interior details and assist in the coordination with the building. After all, owners retain architects to build structures that are to house certain functions. If the building, regardless of how handsome it might be on the outside, does not work for the occupants, then in our judgment the building should not be considered as successful, not to mention the fact that one may have an unhappy client.

On smaller projects, it behooves the architects to provide an in-house interior design service for their clients with the same degree of professionalism as they have in providing architectural services, and the relationship between architect and manufacturers, contractors and suppliers should be the same as that outlined by the A.I.A. Code of Ethics. The most professional method is to relate one's services to a multiple of direct personnel expense and if necessary establish a fee limit based on a percentage of the costs.

The first set of plans shows the initial planning for officer dining facilities for the First National Bank of Memphis, and then the replanning of the same floor for the Summit Club. The requirements for the latter being maximum flexibility with an intimate social club atmosphere. This is illustrated by the introduction of a softened interior architectural motif translated into arches, coves, and sculptured furniture.

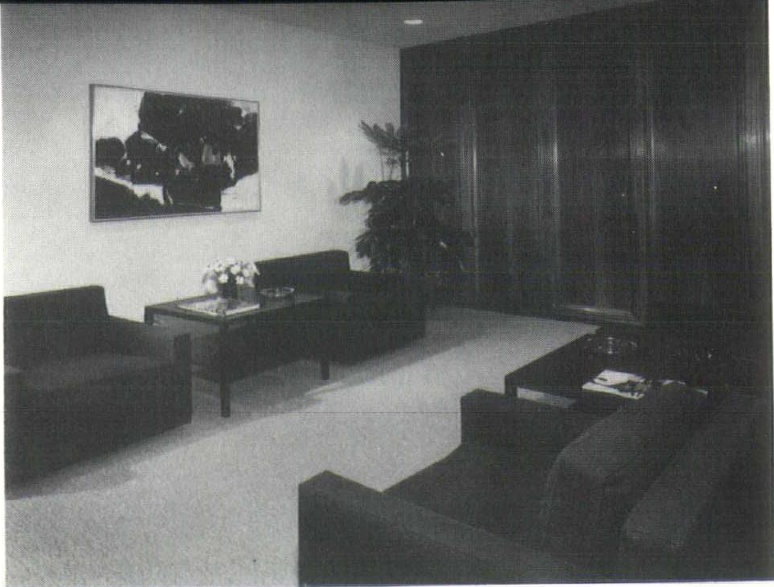
### FIRST NATIONAL BANK OF MEMPHIS 23RD FLOOR REPLANNED FOR SUMMIT CLUB



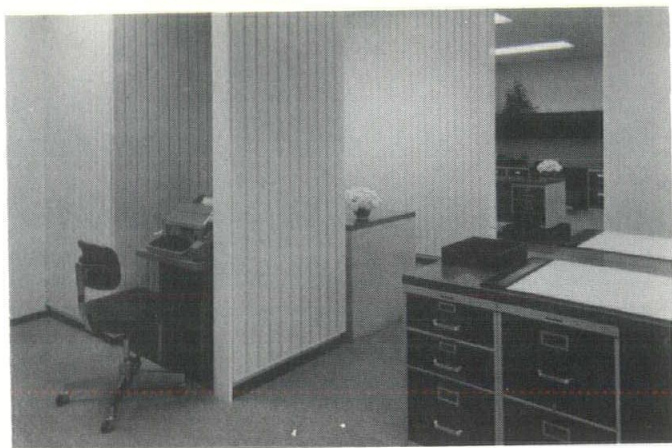
FIRST NATIONAL BANK OF MEMPHIS  
EXECUTIVE DINING FACILITIES, 23RD FLOOR







C. H. SPRAGUE & SON CO. INC., NEW YORK CITY



## FURNISHINGS UNDER THE ARCHITECT'S CONTROL

The second set is of C. H. Sprague & Son Company, Inc., occupying the corner of the 44th floor of the Pan Am Building. This illustrates the lions' share of business for most independent interior design firms. That is real estate developers of hi-rise buildings are in the business to sell space and they prevail upon interior design firms to help them in this endeavor by programming the requirements and translating that program into preliminary space plans, and hopefully well planned physically occupied space which reflects the organization and character of the occupant.

As I indicated, the earlier architects and clients recognize the importance of the interior program and determine it, the more significant the contribution to the project. Too often the architects are concerned with the large scheme of things and lose sight of the individual whereas they should be more sympathetic with the conveniences required to make life and work easier for their clients.

## PROJECT PROMOTION ASSISTANCE IN THE SMALL OFFICE

John Hayes Pritchard,  
F.A.I.A., Tunica, Miss.



It is my purpose to try to discuss the ethical behavior of the small practitioner in relation to the work of the interior designer and landscape architect, and all of the other allied professions with which the architect must work day to day; and how all of this relates to the mandatory standards of the American Institute of Architects.

Of course, we all know that an honest man needs no code written by his Association (except possibly as a reminder to his conscience). In my work with the National Judicial Board, I have found that the two primary reasons which are almost synonymous for getting people into trouble with the standards are greed and stupidity. Many times friends in their eagerness to promote a job—and not being familiar with our professional ethics—will trap an architect into (first) giving advice, and (second) making sketches. Then, too late, he finds that someone else has already gotten the job and he's in trouble.

I have been asked many times which standards are

most frequently violated. Well, it seems that they are: 1.3 (Contracting); 3.3 (Shall Not Knowingly Injure Another Architect) and 3.4 (Shall Not Attempt to Supplant Another Architect). Once in a while 3.10, and 4.3 will get into the picture.

It seems to me that the small office, which wishes to assist in the promotion of projects, should employ consultants in the fields of master planning, feasibility studies; existing condition surveys; landscape architecture; interior design, and any other special services the same as he now employs. Electrical, Mechanical, and Acoustical consultants. I would hope that for these preliminary services, he could be paid an equitable fee. All of this, in a way, tends to lead into a theory and practice of the comprehensive service. I would like to recommend AIA's book on the subject edited by William Dudley Hunt, Jr.

We hear an awful lot about how we should "think big and do big things," but most of us do a great many small jobs and we should always remember that it doesn't have to be big to be good.

END

**EDITOR'S NOTE:** *This talk very well could be expanded into a full convention theme. Too bad there was so little time to explore some rather explosive bait John Pritchard threw out. It is sad and shocking to see grown men cry, but perhaps Ed Baumhauer and I both misinterpreted the parting shot. "It is alright to solicit, just don't be crude about it!"*

GUEST EDITOR

ALABAMA ARCHITECT



## LANDSCAPING IN THE BASE BID



**Edward L. Daugherty**  
Landscape Architect  
Atlanta, Georgia

Landscape Architecture is one of the several related design professions that concerns itself with the shaping of man's environment.

Uniquely, the landscape architect is a three-dimensional planner who has as the tools of his trade these elements:

- a. land
- b. buildings
- c. people
- d. plants

He uses these tools to create pleasant and human spaces, in the design of such things as garden, public parks, subdivisions, college campuses, and a system of roads.

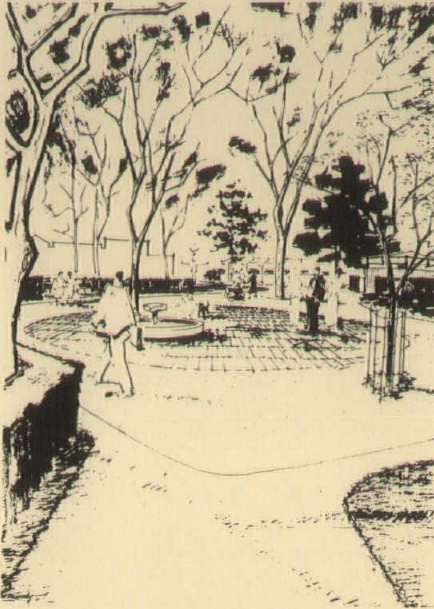
Basically, the landscape architect is an organizer of outdoor spaces. He can be of the greatest service in the collaboration with others in the designing profession; particularly with other architects.

He can assist or direct the process of design, depending upon the nature of the job and the stage of development. Some of these are in the design of a public park or a college campus.

Several considerations will be used for the site; for example: it's character, topography, ecology, neighboring land uses, and the weather. The proposed program of use may be changed upon thorough evaluation of the qualities of the site.

Not surprisingly, the initial design force may be that of the land-

scape architect as the primary designer to establish patterns of land use. Some of these uses are roads, utilities, and major open space. Then and only then should architectural decisions prevail. At this point, the role of primary designer passes to the architect.



**Project for Marietta Square**  
Marietta, Georgia

**EDITOR'S NOTE:** *By all means, those of you who did not attend the convention and obtain from Ed Daugherty a copy of "The Landscape Architect's Professional Practice and Basis of Charges," write for your copy c/o American Society of Landscape Architects, 2000 K Street, N.W., Washington, D.C. 20006. It is a must!*



**A Sculpture Garden at**  
Atlanta Art Association

Southside Park, Jacksonville, Florida. (Planting Incomplete). Daugherty responsible for site design and planning. Architect Taylor Hardwick, Hardwick & Lee, Jacksonville.





## HONOR AWARDS PROGRAM 1967

ALABAMA COUNCIL OF  
ARCHITECTS, A.I.A.

**LIMESTONE COUNTY  
OFFICE BUILDING**  
Athens, Alabama

NORTHINGTON, SMITH, KRANERT  
& ASSOCIATES, Architects

Building consists of two floors with a full basement. The main floor is designed for offices for the County Board of Education, Board of Revenue, and Anti-Poverty Staff; the basement for text book storage and general county storage; the second floor for future expansion of county offices. The building is of steel frame construction with exterior walls of concrete block and brick. Interior walls of stud and gypsum board and plastered concrete block. Gas-fired units located in the basement and on the roof provide heating and air conditioning.



**JOHN L. HOWELL RESIDENCE**  
Mountain Brook, Alabama

FRITZ WOEHLE, Architect

Exterior walls — redwood, glass; Roof — built-up, cedar shingle; Interior walls — sheetrock; Interior floors — white vinyl asbestos; Exterior Deck — redwood



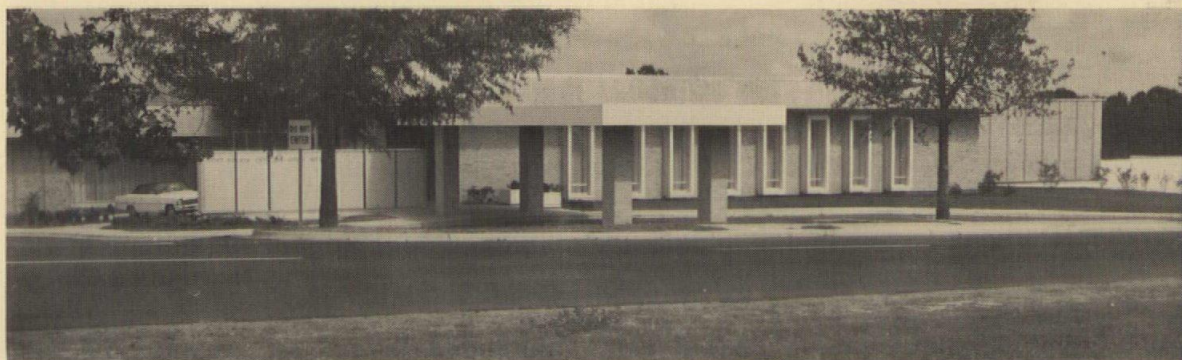




#### **BAPTIST MEDICAL CENTER, BIRMINGHAM**

DAVIS, SPEAKE & ASSOCIATES, Architects

The mountainside site, critical planning element of the 500 bed general hospital, resulted in separation of major functions on three levels and a fourth will connect the hospital with three proposed buildings; Doctors Offices, Nurses' Residence/School and Parking Structure, via tunnel beneath the main entry.



#### **FORT RUCKER OFFICERS OPEN MESS, FORT RUCKER, ALABAMA**

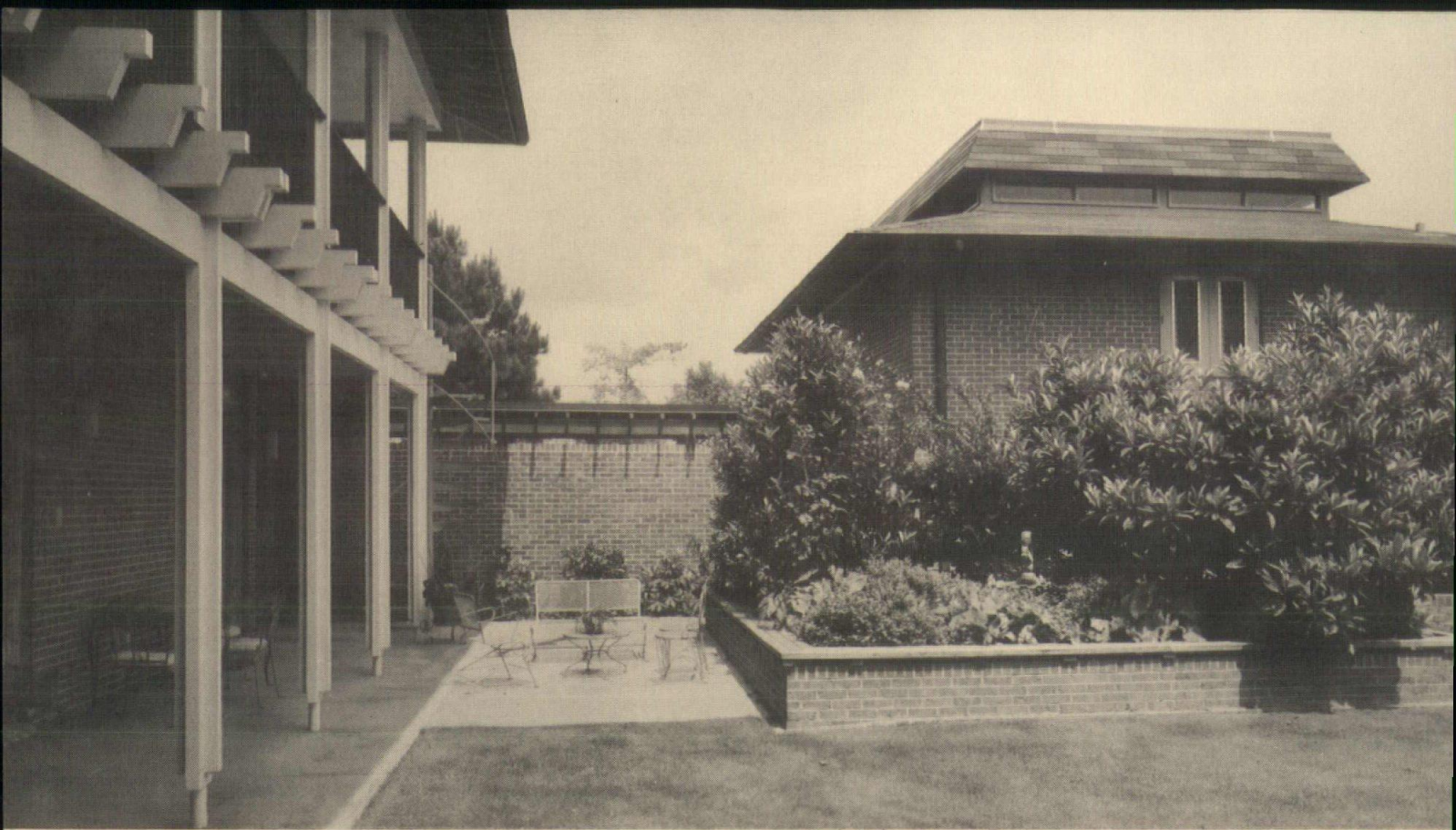
PEARSON, TITTLE, NARROWS & ASSOCIATES, Architects

Owner's Program Requirements: Provide supplementary and complimentary facilities as may be required for adequate fulfillment of the officers social program at the military facility.

Solution: Provide dining with entertainment facilities for individuals and groups ranging from 25 to 500 persons. Flexibility with areas is accomplished by extensive use of moveable wall panels. Dining and lounges with view of golf course is of prime importance.

Construction: The building is of steel frame construction, spread footings concrete lower floor and foundation walls. Roof structure is poured deck or steel joists with built-up roof. Exterior walls are faced brick and exposed aggregate precast panels with concrete block back-up.





**DONALD COMER III RESIDENCE, EUFAULA**  
BLONDHEIM & WILLIAMS, Architects

The site of this residence, which slopes sharply, is on a large lake in Southeast Alabama and covers several acres of heavily wooded land. In designing the house, the architect took advantage of the view to the lake from the living, master bedroom and deck areas. In seeking the rustic atmosphere of outdoors, the architect sought to combine informality with nature.

**FIRE STATION 6, BIRMINGHAM**  
POOLE, PARDUE, MORRISON  
DEAN, Architects  
Fire Station 6, Birmingham, Alabama houses Company 6, city's fire alarm headquarters and fire prevention bureau. Domit Construction Company, Birmingham, Alabama, Contractor.



**JOHN THOMPSON RESIDENCE,  
MONTGOMERY**

JOHNSON & WILLIAMS, Architects

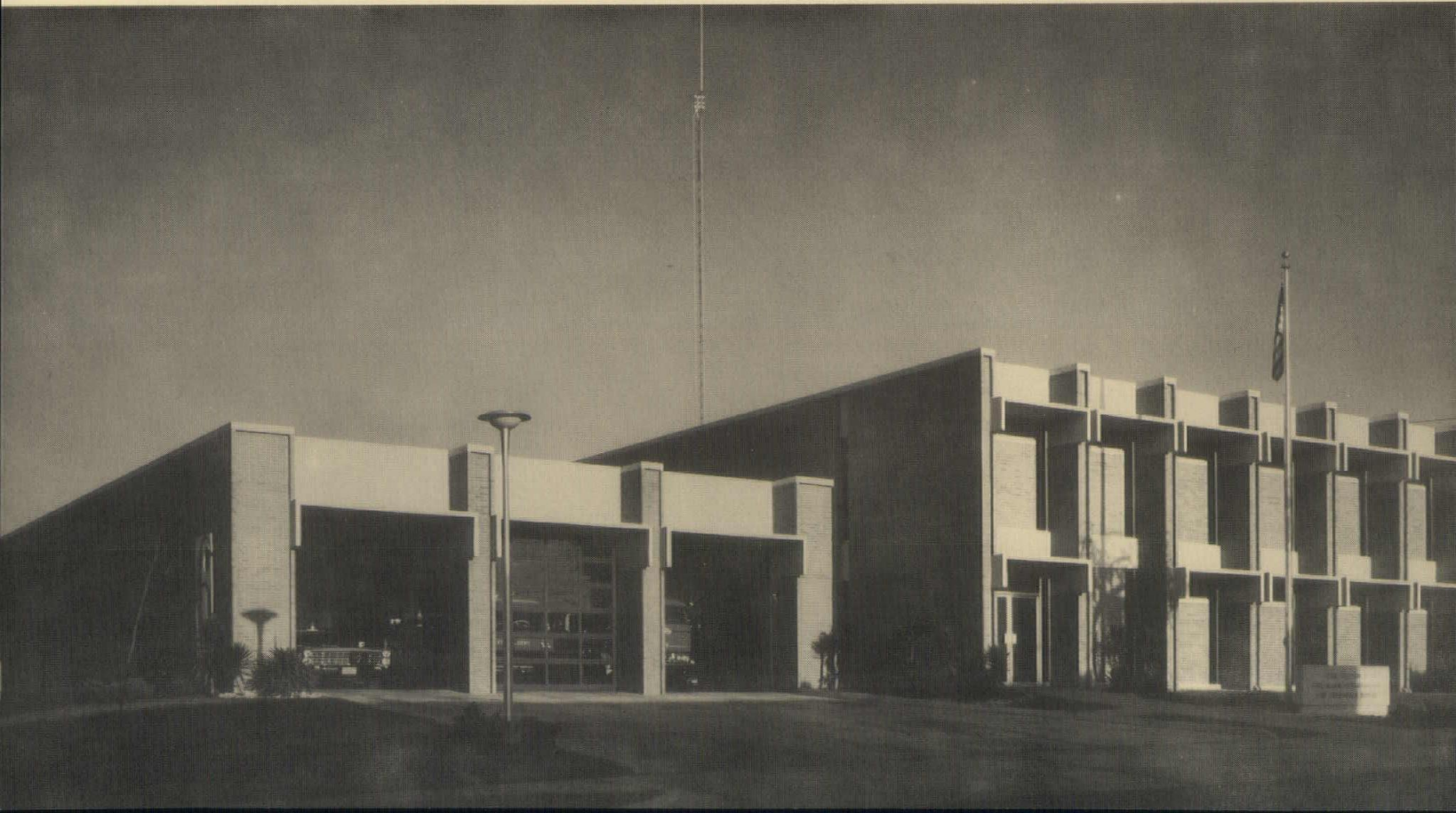
This two story residence is located in a heavily wooded subdivision in Montgomery. The plan consists of a bedroom for each of four children on the second floor and contains the master suite, living and service areas on the first floor. A separate garage with recreation room above is connected by a covered walk. The house is regional in character and is adaptable to a farm climate. Materials consist of brick, stucco and redwood. The landscaping has a natural effect and compliments the character of the house.



**STUDIO APARTMENTS FOR MRS. FRANCES HONOUR, AUBURN**

ENVIRONMENTAL RESEARCH ASSOCIATES, INC., Architects

The Apartments: Four units with backed-up kitchens and entry ways to provide sound privacy between the living areas of each unit. All wood frame finished inside and out with  $\frac{5}{8}$ " Texture 1-11 plywood which is also the structural sheathing. Floors are carpet and soft tile on slab on fill and grade. Batt insulation in walls and ceiling. They have very good spacial variety and flow. Clerestory windows over the mezzanine provide north light and a view into the tree tops. Mezzanine is suitable for studio, office or second bedroom. Sliding glass doors provide view and access to wooded landscape. All electric and fully air conditioned with individual central units. Project cost including paving, sitework and carpeting, \$40,000. Floor space each unit — 850 sq. ft.





Comments of the jury at the honor awards program at the annual state convention of architects A.I.A.

## A SUMMING UP

by J. INGRAHAM CLARK, Dean  
School of Architecture  
& Fine Arts  
Auburn University

Here is a brief evaluation of the award winners at Mobile to go with some of the comments which came from the jury. I might say that the opinion of the jury was unanimous on the eight awards. This, in itself, was quite an accomplishment as you can well understand. Each member of the jury worked separately and seriously on the individual projects before getting together to see if there was a consensus.

We were all impressed by the fact that the entries presented a very workman-like and competent group of buildings. These words describe a quality which most of the buildings share. We found that none of the architects had tried to be intensely personal or make dramatic efforts nor to attract attention. All the work was obviously performed by skillful and conscientious designers. In these days when architects are so often accused of building "monuments to themselves", it was a refreshing experience to find these entries, while being both genuinely creative and designed with originality, they were not trying to be simply different, unusual, or arresting.

It was too bad we couldn't have awarded prizes to them all. As I noted in announcing the awards at the meeting, the jury thought the residential entries showed a particularly high level and that they perhaps demonstrated a greater restraint on the part of the designers. We also noted that in the future there might be a more specific program since we felt that the method of presentation varied quite widely and that site plans were either non-existent or non-informative. Some of the particular comments of the jury included:

The Limestone County office building in Athens, Alabama by Northington, Smith, Kranert and Assoc. achieved a simple monumentality without ostentation and demonstrated a sincere effort on the part of the architects to save the clients money while still achieving an aesthetic quality in meeting the clients need.

The residence for Mr. and Mrs. John L. Howell designed by Fritz Woehle showed an excellent use of simple materials in achieving a straightforward and simple arrangement for family living.

The Baptist hospital by Davis, Speake & Associates was considered a superior solution to a very difficult problem on an extremely difficult site.

The officer's club at Fort Rucker designed by Pearson, Tittle, Narrows & Associates demonstrated a powerfully logical plan which obviously served the function desired.

The residence for John A. Thompson by Johnson and Williams in Montgomery was commended for its successful site planning work in the blending of a con-



**THE JURY**  
(At left) Dan Cowling, Gulf States Regional Director, Little Rock, and Edward L. Daugherty, Landscape Architect, Atlanta.

(Below) John Hayes Pritchard, F.A.I.A., Tunica, Miss.; Dr. J. Ingraham Clark, Dean, School of Architecture and Fine Arts, Auburn University; Louis M. S. Beal, ISD, New York City.



temporary structure in a traditional neighborhood. The two-story arrangement was a difficult problem nicely solved.

The four studio apartments in Auburn for Mrs. Frances Honour designed by Edward Rickard achieved a simplicity and economy which is very difficult today with any kind of speculative or multiple residential-type building.

The Birmingham fire station by Poole, Pardue, Morrison and Dean was a straight-forward solution on a rather tight city site utilizing materials which demonstrated an understanding of the complete function of the fire station. One point the jury made was the fact that the emphasis on the expression of structure almost detracted from the summation.

END



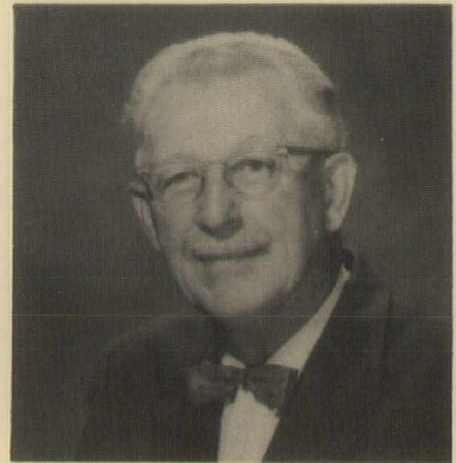
**PRESENTS AWARD TO ARCHITECTURE**—Auburn University Dean J. Ingraham Clark, School of Architecture and Fine Arts, and President Harry M. Philpott accept the annual \$1,500 travel award from R. A. Puryear, Jr., president, Alabama Gas Corporation. The award provides travel allowance to student winners in architectural design competition.



# A HISTORY OF THE PRACTICE OF ARCHITECTURE IN THE STATE OF ALABAMA IN GENERAL

by JOHN J. CAREY

Fellow, American Institute of Architects  
Mobile, Alabama



Mr. John A. Wetzel and Mr. D. O. Whilldin are the sole survivors of the Ten Charter Members of the Alabama Chapter founded July 16, 1916, of the American Institute of Architects.

While the writer has only practiced Architecture in Alabama a little over 40 years, he is the sole surviving member of the first Alabama Board for Registration of Architects. From this coincidence I can not avoid thinking that it is something like being at the top of the list of the FBI's most wanted men, though it is just time that is catching up with us. We can still appear in public and look back with some gratification for whatever contributions we have made to an honored profession and a wealth of friendships we have made, which to me are as important as any professional accomplishments.

We had Mr. Wetzel and Mr. Willdin as honored guests at the meeting of the Alabama Council of the American Institute of Architects in Birmingham during the first few days in November, 1966.

Of the ten Charter Members of the Alabama Chapter of the A.I.A., I have had the pleasure and the good fortune to personally know eight of them and I enjoyed meeting Mr. Wetzel and seeing Mr. Willdin again at the Council meeting in Birmingham.

Speaking of being the sole surviving member of the first Board for Registration of Architects in Alabama, I was privileged to be Chairman of the Committee in drafting the law for the Legislature creating the Board for Registration of Architects in Alabama in 1931.

When I was asked to prepare this history of the Practice of Architecture in the State of Alabama, I thought it was to be an updating of the brochure which was prepared by the Alabama Chapter of the A.I.A. on the occasion of the 25th anniversary and which was written by the late, lovable Hugh Martin, one of the Charter Members of the Chapter, and later a Fellow of the American Institute of Architects. Upon inquiry to the Executive Secretary of the recently formed Alabama Council of the A.I.A., Mr. Jay Leavell, I was in-

formed that I could cover the history as far back as I wished.

In view of the above instruction (for which the editors of this brochure may be sorry) I will start with the year 1826, and will mention only the buildings which are still in existence and all of which are fine examples of their particular style. I will speak mostly of the buildings in the Mobile area since the buildings that had been built in this area appear to have influenced the early architecture of the rest of Alabama. Mobile was settled by the French in 1702, which was 2 years after the Spanish had settled in Pensacola, Florida. Mobile later became a Spanish town until 1813, but strangely there are no buildings still standing that show the influence of Spanish architecture until 1899, when Mr. George B. Rogers, a Charter Member of the Alabama Chapter, designed the still beautiful Government Street Methodist Church, at the corner of Government and Broad Streets, which is a fine example of the Spanish style. The Murphy High School, in Mobile, designed also by Mr. Rogers, and built in 1926, is of the same style.

Among the early buildings still standing are the Bishop Portier Home, built in 1826, and purchased by Bishop Portier as his home. It has been preserved as originally built, though the separate stables and slave quarters have been removed. This home is a raised cottage type that is common in Bayou areas along the coast.



John Carey and Pierre Blouk chat in front of rocket exhibit inviting architects to next year's convention in Huntsville.

The Cathedral of the Immaculate Conception, now one of 17 Minor Basilicas in the U.S.A., which is on the opposite corner from the Portier Home, was started in 1835 and completed in 1850. It is of French Renaissance style, designed by an Architect by the name of Beroujon whom Bishop Portier brought from France.

Most of the larger buildings built about this time, including some residences, were Greek Revival. They included Barton Academy, built in 1836, and the Old Mobile General Hospital, built around the same time. The latter has been replaced by a new, modern hospital, and it has been suggested that part of the old building be used as a Museum.

The best preserved and maintained building of Greek Revival is the Government Street Presbyterian Church, built in 1836. The Architects of this building were Gallier of New Orleans and Dakin Brothers of Mobile.

Oakleigh Mansion, built in 1833, is now the headquarters of the Mobile Historical Society and contains a museum of fine period furnishings.

The Mitchell Home on Spring Hill Avenue was built for Judge John Bragg in 1855 and is beautifully maintained by the present owner. During the azalea season this home is often open to the public, and Azalea Trail Maids, in anti-bellum costumes, act as guides through the home.

Some of the residences still standing show the Greek Revival influence, but most of the old residences built in this era are of Colonial style.

The writer is indebted to Mrs. Nicholas H. Holmes, Jr., President of the Mobile Historic Development Commission, for the dates of construction of most of the old buildings referred to in this history.

Colonial residences and some larger buildings are still being built but in the last couple of decades we have seen more of the so-called Modern influence developing in some residences and many schools, churches and commercial buildings.

The Modern influence, with its concrete block and metal screens, developed in some instances to hide



the facades of old buildings, has been more recently used on new buildings as sun screens, but I feel that this phase of the Modern style has pretty well run its course, and we are passing through an era of tall arched arcades with slender columns surrounding the buildings, which I believe was first used by the outstanding Japanese architect, Minoru Yamasaki, in his design of the McGregor Memorial Conference Community Center at Wayne State University, which is a gem of delicately developed simplicity and offers both sun and weather protection. It has inspired many other architects to incorporate its features in their designs.

The advent in this country of the use of prestressed and post-stressed concrete has developed the use of folded plate and arched roof decks as well as the thin shell dome roofs, which because of their long span carrying capacity has eliminated the use of interior columns or greatly decreased the number required. This development has given the architect much wider latitude and variety of design. The sandwich type panels for exterior walls, now used extensively, not only decreases the load on the exterior column footing but also allows the architect unlimited possibilities for the use of color in the facades.

The Alabama Architect, a bi-monthly publication of the Alabama Council of the American Institute of Architects, which is edited by the Executive Director of the Council, Mr. Jay Leavell, in cooperation with all of the Alabama Chapters, features in each issue photographs of the outstanding work of one of the Chapters.

This publication was only started in 1965, when the Council was formed and the photographs of the work shown should be an inspiration for all of the staffs of all architects in Alabama.

I feel that simplicity is the keynote of good architecture in Modern or Contemporary design and most of the work illustrated in these publications shows that the Alabama architects have given this a great deal of thought.

Since most of the outstanding architectural design produced in Alabama, in simplicity and dignified good taste and imagination, has been produced by members of The American Institute of Architects for the past half century it is appropriate to mention the names of a few men of this organization who have done so much to advance the progress of the professional ethics, cooperation with other architects of the State, establishment of recommended minimum fees, improvement of standard office procedures, training of young architects, and serving on Chapter, Council, Regional and National Committees of the Institute at a great sacrifice of their own time, without pay, the following listed men cited below do not by any means include all of those who have contributed greatly to the ad-

vancement of the profession in the above categories. However, since this is supposed to be an article in a brochure, along with several other articles to be included I will have to be brief, knowing that the readers are cognizant of the contributions of the others and are fully appreciative of their work for the profession.

Jack Bass Smith, of Birmingham, served the Alabama Chapter as Vice President in 1937, President in 1938 and 1939, became a Fellow of the Institute and served on the Jury of Fellows 1955 to 1959. For years, Jack was "Mr. By-Laws" of the Chapter. He kept the By-Laws of the Chapter abreast of all of the changes recommended by the Institute for years and, at the drop of a comma, could quote verbatim any section of the revised laws. And he did so whenever any matter was proposed in Chapter meetings that were violation of these laws.



John Carey with Allen L. Bartlett (left) former president Alabama Chapter of Architects, A.I.A.

Nelson Smith of Birmingham, who became a Fellow of the Institute in 1956, started his practice there in Architecture in 1937. Nelson's entire career since has been devoted to civic affairs and the welfare of the profession of Architecture in Alabama and the nation. He was Secretary of the Alabama Chapter in 1949 and President in 1950. In addition to his efficient work on Chapter committees and in Chapter meetings, where his soft-spoken logic usually prevailed, he has made significant contributions to the profession on the National level. Part of his work at this level was the framing of a new policy on ethics, begun during his service on the Committee on Judiciary Procedures and completed the following year by the Committee on Office Practice. As Chairman of the Subcommittee on Document 330, "Standards of Professional Practice," Nelson Smith, more than any one else, was responsible for the development of this important statement of Institute policy.

Clyde C. Pearson of Montgomery, joined the Alabama Chapter in 1938 and was made a Fellow of the Institute in 1952. He has been a member of the Alabama Board for Registration of Architects and was its Secretary for a number of years. He was Secretary-Treasurer of the Chapter in 1952 and President in 1943 and 1944. He was Regional Director of the Gulf Coast Regional Council of the A.I.A. from 1953 to

1956. He has served on Institute Committees and was a member of the Board of Directors of the Institute while serving as Director of the Gulf Coast Council. While on the Board of Directors he was instrumental in having President Stanton of the Institute and the whole Board of Directors attend the Gulf Coast Regional Conference in Montgomery, and after the Conference he managed a bus trip for the whole Board of Directors of the Institute to the Point Clear Hotel, at Point Clear, Ala., for a regular meeting of the Board. For years after that meeting whenever I would meet these men at National Conventions they would always speak of that bus trip to Point Clear with fond recollections. Clyde left nothing undone to make it a gay and happy trip. Living in the Capitol City and being President of the Montgomery Chamber of Commerce and President of the Auburn University Alumni Association he made many friends among the members and staff of the Alabama Legislature who were very helpful to the profession when we had occasion to seek amendments to the Act creating the Alabama State Board for Registration of Architects.

Moreland Griffith Smith of Montgomery, joined the A.I.A. in 1933 and was made a Fellow of the Institute in 1961. He was President of the Alabama Chapter in 1938 and 1939. Again he served as Vice-President in 1962 and President in 1963 during the formative years of the establishment of separate Chapters of the A.I.A. in Alabama in conjunction with the establishment of the Alabama Council of the A.I.A. Moreland's firm won many awards for excellence of design for schools, apartment buildings and hospitals. He also arranged and headed a three-day seminar in Biloxi on hospital planning and published a brochure, at his own expense, covering the accomplishments of the seminar.

Professor E. Walter Burkhardt of Auburn University, Auburn, Ala., joined the A.I.A. in 1929 and was Chapter Vice President in 1938 and 1939 and President in 1940 and 1941, and was made Fellow of the Institute in 1964. He received his B.S. in Architecture at Washington State University in 1917 and his M.S. in Architecture at Columbia University in 1922. He has served as Professor of Architecture in the School of Architecture and the Arts at Auburn University since 1929, and has only retired recently from the educational phase of his career to devote his full time to his private practice, in which he had been engaged for many years with some of his associates. In his earlier years he was 3 times Medalist at the Beaux-Arts Institute of Design and Loegist in the 14th Paris Prize Competition in Architecture. His principal works included the Auburn-Opelika Airport Building, Office Buildings, Schools, Funeral Homes and many fine residences, all in the Auburn area. He was a delegate of the U.S. State Department and the



A.I.A. to the 14th International Congress of Architects at Paris in 1937. He was instrumental in building the 5-year course in Architecture, the first 5-year degree program in the South. He placed early emphasis on the integration of city planning and the decorative arts with architectural design and was instrumental in the establishment of the former Landscape Design Division in the Department of Architecture. Probably he is best remembered by the older architects and draftsmen as Alabama District Officers of the Historic American Buildings Survey during the depression, when that project provided employment for many of us. He was Chairman for 12 years on the Chapter Committee on Preservation of Historic Buildings.

In January of 1951, at the annual meeting of the Alabama Chapter in Birmingham, when it came time for the election of officers for the ensuing year, Mr. Nicholas Holmes who was sitting near me, arose and thanked the members for the honor, but that he felt he could not accept the office of president.

It so happened that I had been caught with my battery down (on my hearing aid) and while I heard Mr. Holmes, I did not hear the ensuing nomination and elections. However, a few minutes later a member of the Nominating Committee came to the back of the room and whispered to me, "Who would you like for Secretary?" My reply was, "I don't care. Why not ask the new President?" He said, "You are the new President."

When I recovered from my surprise and some panic, I suggested Arch Winter, as I thought to myself "he is the best educated member I know." It turned out to be a very wise choice, as Arch, in his always efficient manner, kept in touch with everything I was supposed to take care of and needed me into doing it on time, with the result that he made a fair President of me. As a result of this episode, I always carry spare batteries to all meetings and conventions.

Arch Reese Winter, Secretary of the Alabama Chapter in 1951, President in 1965 and Fellow of the Institute in 1965. Arch Winter received his Bachelor of Architecture Degree from Auburn University in 1935, his Master of Architecture Degree from Catholic University in Washington, D.C. in 1937. He then went to Cranbrook Academy of Art at Bloomfield Hills, Michigan, to study City Planning under the renowned elder Saarinen in 1939 and did so well that he was awarded a Scholarship from 1940 to 1941. He started his practice of Architecture and City Planning in Mobile in 1941 and has maintained his office here continuously except during his service as a Navy Lieutenant from 1943 to 1946. His practice includes public, commercial and industrial buildings, city planning and urban renewal. His principal buildings were the YWCA Youth Center and Residence in Mobile and the Isle Dauphine Club on Dauphin Island,

Alabama. He has made the Master Plans for Mobile and Gadsden, Ala.; Natchez, Miss.; Shreveport, Bossier City, Natchitoches, Monroe, Bastrop and Vidalia in Louisiana. His urban Renewal work includes Mobile, Gadsden, Elba and Florence, Alabama; Louisville, Kentucky. The plan for Downtown Shreveport was given an A.I.A. citation for excellence in community design. His work on National Committees of the American Institute of Architects include the A.I.A. Engineers Joint Council Committee 1957-59, Community Planning (now Urban Design) Committee from 1959 to 1964, Chairman 1962. He was the A.I.A. delegate to the Working Commission on Urbanism, UIA, at Athens in 1962. He is a member of the American Institute of Planners, Southeast Chapter. He was General Chairman of the Gulf Coast Regional Council Conference held at Dauphine Island, Ala., in 1963, which many will remember as an unusually outstanding success. Arch is the nominee from the Gulf States Region for the office of Regional Director for a 3-year term beginning in 1968.

Since the establishment of the Board for Registration of Architects in Alabama in 1931 had a direct bearing on the improvement of architectural design and building construction in Alabama it is certainly appropriate to include some of the early history of the passage of the Act. An early experience of my own will serve to illustrate this point. When I first came to practice in Alabama in 1926, having already been registered in the District of Columbia and the State of Florida, my first move was to make application for a license to practice Architecture in Mobile. When I arrived at the office of the Licensing Commission of Mobile I told the clerk I was referred to that I wanted to get an application blank to apply for a license to practice Architecture. The clerk reached for a book, inserted a carbon sheet under the top page and proceeded to ask my name, address and telephone number. When he had written this down he pulled off the top sheet and handed it to me and said "That will be \$39.50." This shocked me and I guess my blood pressure and voice raised at the same time. I said to the clerk "Do you mean to tell me it costs \$39.50 for the form to apply for a license?" Then his voice rose too and he said to me, "Mister you want a license to practice Architecture, don't you, well there it is." This was the situation in 1926. I might say that I brooded over this, as I found that Real Estate firms, contractors and building supply houses throughout Alabama were preparing plans for residences, industrial buildings, stores, etc. This does not mean that all architecture in Alabama was suffering, except by comparison with the work of the many fine architects who were doing outstanding work in the State. At first I was discouraged locally when I brought up the question in discussion with other architects who said they had tried to get a Regis-

tration Board established several times in Alabama, but always without success. As I got to know more of the Architects of the State and pressed for another try we finally arranged for committees from Mobile, Birmingham and Montgomery to meet in Montgomery to explore the chances of getting this legislation, where we received some encouragement through legislature friends of the Montgomery architects. After a few days of discussion of what kind of a law we wanted and reviewing a few Registration laws from some other states the group elected a committee of five, of which I was Chairman, to stay in Montgomery to prepare a draft of the law, and the rest returned to their homes. As I recall, Mr. Silas D. Cater, the Clerk of the House, was one of those who helped us in reviewing our draft and impressed on us that we would have to compromise on some of our demands which would stir up opposition. He told us to try to get the law on the books first, and then we could amend it at a later favorable time. President Johnson would have said "Let us reason together." The committee stayed in Montgomery about 10 days contacting the legislators (lobbying). We lost some of our original backers but Mr. Cater got some of the original opposition members to swing over to our support and the legislative Act was finally passed. Mr. Brown's prediction proved true. With the full support of expanded membership of the Alabama Chapter several good amendments have been approved by the Legislature and time has developed a need for additional amendments that are badly needed.

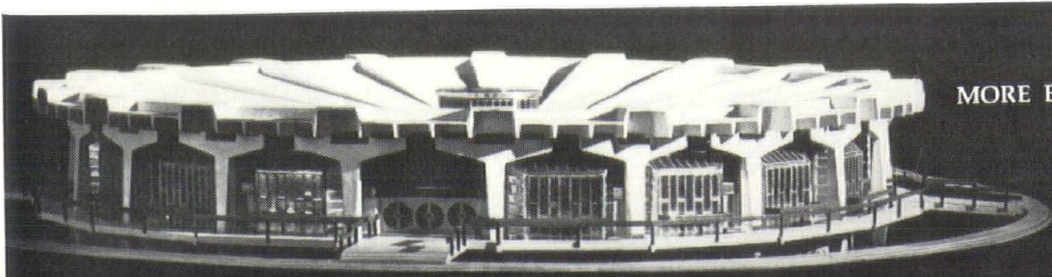
In the first year of the Board's operation, we had 51 Registered Architects and most of these came in under the "Grandfather" clause of the Act that allowed 90 days for any architect then practicing to become registered without examination. The writer served on this Board for a total of 15 years at 2 different periods and under four different Governors, the last eight years as Chairman of the Board. When I left the Board in 1964 there were 525 active Registrants, of which 252 were non-residents of the State of Alabama.

Since 1958 the Board has been fortunate in having the services of John M. Morton as a paid Secretary. Mr. Morton is a Registered Architect and a Registered Engineer who practices principally as a Consulting Structural Engineer. In addition to being an efficient Secretary, his dual professions has enabled him to develop and maintain a harmonious relationship between the two professions.

It is my opinion that the young men of the profession now, because of their longer academic training and the expanded scope of their activities, will raise the standing of the profession to even greater heights of accomplishment than it has enjoyed in the past. Many of them have already begun to show this promise.

END

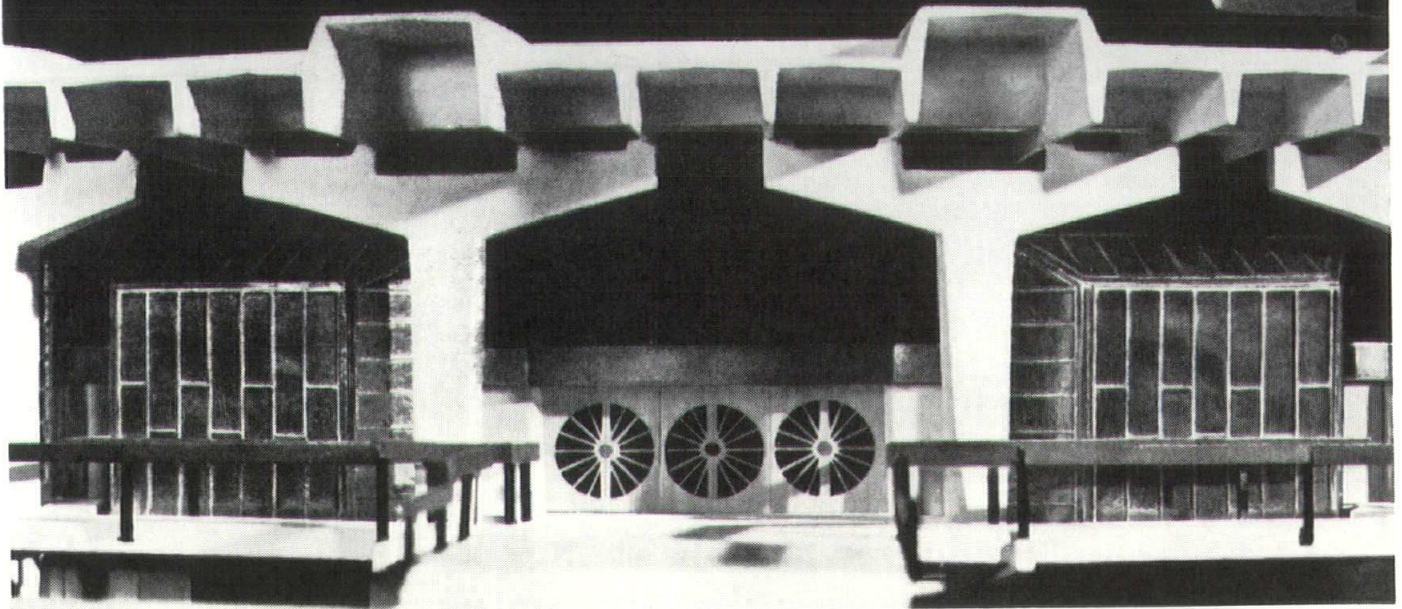





THE BEST IDEAS ARE  
MORE EXCITING IN CONCRETE

## 40 WEDGES OF PRESTRESSED CONCRETE ROUND OUT A STRIKING 2000-TON ROOF

The spectacular new Convention Center in Phoenix is roofed by prestressed concrete wedges supported entirely by peripheral T-columns precast in concrete. Wholly unencumbered interior space, 180 feet in diameter, is effected by this unique design, along with superior acoustical qualities. □ Concrete provided the design versatility needed to achieve exceptional visual interest. The wedge-shaped roof sections, radiating from a center ring, are of alternating flat and "high-hat" double tees. This creates the decorative geometry of the roof-line and also produces a dramatic "beamed ceiling" interior. □ Everywhere today, concrete structures of all types are receiving recognition for their bold concepts and fresh, imaginative design treatments.



WINNER, 1964 PRESTRESSED CONCRETE INSTITUTE AWARD PROGRAM: HIWAY HOUSE CONVENTION CENTER, PHOENIX, ARIZONA. ARCHITECTS: FERRY NEUSCHATZ, A.I.A., LOS ANGELES, CALIF., GARY CALL ASSOCIATE. STRUCTURAL ENGINEERS: T. Y. LIN & ASSOCIATES. CONTRACTOR: E. L. FARMER CONSTRUCTION CO. OF PHOENIX

### PORTLAND CEMENT ASSOCIATION

1214 South 20th St., Birmingham, Alabama 35205

*An organization to improve and extend the uses of concrete, made possible by the financial support of most competing cement manufacturers in the United States and Canada*



## NCARB BOARD MEETING



**ATTEND SOUTHERN CONFERENCE NCARB MEETING —**  
Beginning at left: Dean James Clark, School of Architecture, Auburn University, Auburn, Alabama; Martin J. Lide, chairman, Alabama Board for Registration of Architects; Robert Bradley, Asst. Attorney General, Alabama; Charles H. McCauley, member Alabama Board for Registration of Architects; John M. Morton, secretary Alabama Board for Registration of Architects; Murray Watson, member Alabama Board for Registration of Architects; Charles A. Blondheim, Jr., member Alabama Board for Registration of Architects.


The Southern Regional Conference of the National Council of Architectural Registration Boards, held at Point Clear, Alabama on October 20-21, 1967, was attended by 26 Board members representing 10 Southern states.

Earl Mathes of Louisiana, immediate Past President of the NCARB, opened the meeting and discussed the past accomplishments of NCARB, closing with the following statement: "Much has been done and much is still being done to achieve the original assignment when our organization came into existence almost half a century ago. This assignment was to take steps to bring all of the various state examining officials together into one strong organization in an effort to facilitate interchange of information, reciprocal registration, uniformity of license and registration laws; discuss the merits of various examining methods, scope of examinations and other means of improving the general education standards of the architectural profession of the U.S." Committee reports on Continuing Education, Design, Site Planning and Education were presented and discussed in detail.

The main address was presented by William J. Geddes, NCARB New England Director and a partner of TAC of Cambridge, Mass. In his presentation, Mr. Geddes stressed the goals of NCARB. He stated that the present structure must be overhauled to meet the changes and advances in our profession and gave the following specific examples:

- (1) The profession must work more closely with the schools or internship and continuing education programs.
- (2) Studies should be made on model registration laws.
- (3) Thought should be given to increased legal responsibility and involvement now encountered by our profession.

— CHARLES BLONDHEIM



**RILEY-STUART**  
Supply Co., Inc.

Building Materials

WESTERN DRIVE OFF MOFFAT ROAD

TELEPHONE 471-4361

P. O. BOX 847      MOBILE, ALABAMA 36601

- EXTERIORS
- INTERIORS
- AERIAL
- COLOR
- BLACK & WHITE

# Paul Robertson

## ARCHITECTURAL PHOTOGRAPHY

Many photos published in architectural forum & other publications

**New Location, 847 South Perry St.**

**Montgomery, Ala.**

**Phone 263-0413**

► Special attn. to work anywhere in the State



*Serving the  
Architects and  
Builders of  
the State*

**ALABAMA  
INDUSTRIES**

**CONCRETE  
ASSOCIATION**

**ACIA**

P. O. BOX 4157  
401 BELL BUILDING  
MONTGOMERY, ALABAMA

*Building for Permanence  
with Concrete Products*



## PROFESSIONAL CARDS

### EVANS AND YOUNG

Consulting Engineers

Phone 322-4791

Brown-Marx Building

BIRMINGHAM, ALABAMA

### HALLMARK & BROWDER ELECTRICAL & MECHANICAL ENGINEERS

139 Lee St. Tel. 265-5555

Montgomery, Alabama

Registered Professional Consultants  
Alabama, Florida, Georgia, Mississippi

### WILLIS ENGINEERING

REGISTERED: ALABAMA, TENNESSEE  
& MISSISSIPPI

ROBERT C. WILLIS, P. E.  
CONSULTING ENGINEER  
ELECTRICAL AIR CONDITIONING  
HEATING AND PLUMBING



P. O. BOX 916  
PHONE 764-0817 612 EAST TENNESSEE STREET  
FLORENCE, ALABAMA 35631

### PAXTON-ALEXANDER ENGINEERS

Consulting Civil Engineers

301-303 RALEIGH AVENUE

SHEFFIELD, ALABAMA 35660

PHONE 205 — 383-0516



## BUILDING SPECIALTIES

### GEORGE BRINSON, Mfg. Rep.

P. O. BOX 4031, MONTGOMERY, ALABAMA

PHONE 265-4488

American Metal Inc. Hollow Metal,  
Price Metal Toilet Partitions,  
Holcomb & Hoke Accordion Doors  
DUR-O-WALL Masonry Reinforcing  
and Concrete Accessories

When you're building in Alabama, come  
to Vulcan for basics: ready-mix, concrete  
block, concrete pipe.

Products so common you scarcely notice  
them . . . made with uncommon care.

**Vulcan  
Materials  
Company**  
CONCRETE PRODUCTS DIVISION  
BIRMINGHAM, ALA. 35223



Birmingham's Red Mountain Expressway - Phase II: Harbert Construction Corporation.  
Ready Mix: Vulcan Materials Company.

FOR THE MOST COMPLETE LINE OF  
CERAMIC TILE IN THE INDUSTRY



**STYLON CORPORATION**

FLORENCE, ALA.





## GOES ALL-ELECTRIC

*Mobile department store makes a "clean break" with the past!*

Gayfer's had a choice. And, they chose to go all-Electric when they remodeled and enlarged their Springdale store on the Airport Boulevard and Beltline Highway in Mobile.

Economical Electricity now does everything—including heating, cooling, and lighting nearly two acres of space in this luxurious, full-line department store. Customers enjoy relaxed shopping in complete comfort the year-round regardless of outside temperature. And, Gayfer's personnel appreciate the unmatched cleanliness of flameless Electric heating and cooling.

Lower operating costs and more usable space are only two of the benefits of an all-Electric building. Gayfer's got the facts and then moved up. Why don't you? There's no cost or obligation for the assistance of one of our commercial sales engineers. All you need do is call our nearest office.



---

### Alabama Power

Company... Investor Owned — Helping Develop Alabama

---



# Owens-Corning Fiberglas Corporation

2400 Airport Boulevard  
Mobile, Alabama

CERAMIC & QUARRY TILE

*Wise Inc.*

TILE & CARPET

461 SOUTH BROAD ST.  
MOBILE, ALABAMA

## STUART CONSTRUCTION COMPANY, Inc.

GENERAL CONTRACTORS

P. O. Drawer 570

BAY MINETTE, ALABAMA 36507

Bay Minette  
937-2391  
Area Code 205



Mobile  
HE 8-9448  
Area Code 205



TILE FOR EVERY PURPOSE

**Mobile Tile Company**

TERRAZZO — FLOOR COVERINGS

3400 BELTLINE PARK DRIVE NORTH  
MOBILE, ALA.

## REPORT OF COMMISSION ON ARCHITECTURAL DESIGN

FROM: Nelson Smith, F.A.I.A., Commissioner

TO: ALABAMA COUNCIL A.I.A.

This is a consolidated report of Committees under my Commission for 1967.

### Committee on Preservation of Historic Buildings

A duel with the bull-dozer, and he is the favorite. Voluminous reports each from Gene Gray (Mo) Chairman, Roy Hitchcock (B) and Luther Hill Mtgy). Gray outlines **Mobile Activities**: preservation, re-use or removal; salvage, record drawings, review of plans within "historic districts"; urges an armed stand at proposed cloverleaves, maintenance by edict, tour-guides; a fine program which should be enhanced. **Hitchcock tells of communication** direct and indirect with National Trust for Historic Preservation and lists documents and slides available; praises proselytes (few but vocal); describes personal efforts in Tuscaloosa County, and reports a Preservation Lecture to the Birmingham Chapter AIA in August after which the lecturer surveyed the City and recommended steps. There is apparently an effort to encourage the Legislature to create an Alabama Historical Commission. **Hill tells of Montgomery Historical Commission** (to select areas for preservation) and **Historical Review Board** (to act on proposals for demolition), both of which are in the formative stage.

### Committee on Aesthetics

This is unfamiliar ground, in which we are prone to feel undressed.

Don Morrison (B) Chairman, tells of an exciting meeting with the Planning Director at the Mayor's request, which saved twenty trees in the park; urges the appeal this committee can have to the AIA younger member, as well as to the nature lover. A well-organized and exemplary report of North Alabama activities by **Gene Burr** showing Huntsville activity which should bring lasting values in public relations for the Profession, and perhaps, improved aesthetics.

### Committee on Collaborating Arts

The activity charged to this title is almost never considered. But then, after the collaborating engineers have their round with the Budget, little is left for "architecture" and nothing for art.

Fritz Woehle (B) Chairman, reports collaboration by Birmingham Chapter in the Festival of Arts, receipt of a punch bowl for community service, sponsorship of an historic episode and an Architects Ball. Seems more fraternization than collaboration somehow, but Fritz gives a fine party.

### Committee on Institutional and Commercial Buildings

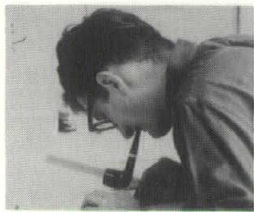
This is where we came in; the bull-dozer has done its work and the landscape is being filled in with used-car lots, junk-parks, kudzo and Commercial and Institutional Buildings. Our committee-members are busily engaged doing their part in respect to the latter, and had no time for a report.

### For the Year of 1968:

It may be stupid to think that things happen in any other way, but several of us who have done the poorest job realize that a start should have been made at the beginning of the year, not during the last month. **The Huntsville Program has been truly fine** for the last two years, and it might be good to have a meeting of the state-wide council members of this committee in Huntsville to review their efforts and be sparked thereby. I urge that this receive consideration by our replacements.

*This is the first in a Series of Commission Reports which will appear in issues of the ALABAMA ARCHITECT.*





David Beard  
Student, 4th Year Design

## STUDENT CHAPTER AUBURN UNIVERSITY

As Architectural students, we are astounded by the vast numbers of Architectural publications that pass before us. However, these are our only link with the building activity going on in the rest of the world.

This summer a group of twenty-three architect students from Auburn was given the chance to see some of this building activity first hand. The tour originated at Auburn on June 2 and returned to the loveliest village after two weeks and 3200 miles of traveling to Atlanta, Washington, Baltimore, Philadelphia, New York, New Haven, Hartford and climaxing in Montreal and Toronto.

We found that most of the structures that we viewed were very much different from their pictorial counterparts. Any judgements must be made by moving through the parts that comprise the structure. And only when we see it function can we say, "It works".

Too many buildings are judged in terms of the publications and because of this they usually attain much more of it than they deserve.

As a result of this trip we have learned to be more critical of the published buildings and therefore more anxious to put ourselves in physical contact with these structures.

—WILLIAM R. EADES III

A slide lecture entitled: "This is Auburn" will be available soon for meetings, etc. For further information contact Stan Tomblin, Department of Architecture, Auburn University, Auburn, Alabama 36830.

## For the finest in finishes, always specify STACO PAINT

We appreciate the acceptance of Staco Paint by architects, engineers and contractors and realize that to merit such confidence we must maintain top quality. To this we add highly skilled technical assistance and prompt delivery.

Anxious to be of service are L. Vastine Stabler, L. C. Burks, Philip H. Boyd, Fred W. Davis, Bill Hathcox, Julian Rosdick, Claude Kersh or any of our 25-member staff.



**STABLER PAINT MFG. CO.**  
INCORPORATED

3827 1st Ave., N., Birmingham, Ala. 35222

## PEARCE, DEMOSS & KING, INC. GENERAL CONTRACTORS

1308 Church Street, N. E.

Decatur, Alabama

**SATISFIED CUSTOMERS — OUR BIGGEST ASSET**



## GRESHAM, WILLIAMS AND JOHNSON CO.

*General Contractors*

P. O. BOX 1708  
DECATUR, ALABAMA 35601

- AIR CONDITIONING
- HEATING
- MECHANICAL CONTRACTORS



3704 moffat road • mobile, alabama

MAX MUTCHNICK  
President

Business 479-1491  
Resident 473-2000

## ALDON O. WARD

CONTRACTOR

3311 HALLS MILL RD.

P. O. BOX 6402

PHONE 471-3314

MOBILE, ALA.





## THE ALABAMA ARCHITECT

Suite 501—Guaranty Savings Bldg.

P. O. Box 267—Montgomery, Ala.

BULK RATE  
U. S. POSTAGE

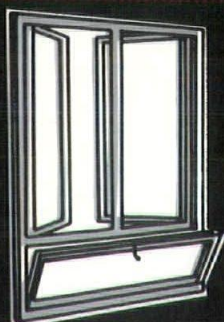
**PAID**

MONTGOMERY, ALA.  
PERMIT NO. 130

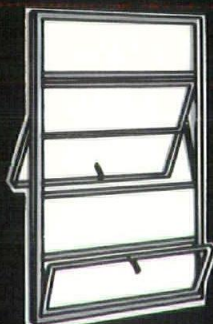
Alabama's **CENTRAL** Source  
for Technical Information  
and Distribution of

# Aluminum Windows

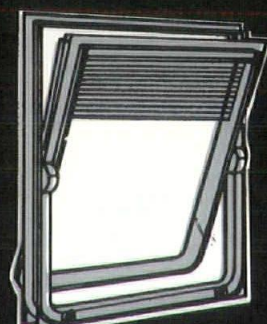
Representing the Nation's **MAJOR MANUFACTURERS** of  
**ALUMINUM AND STEEL WINDOWS**



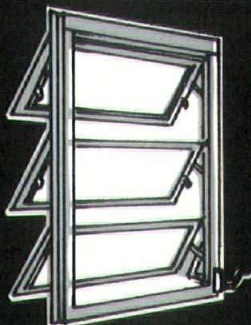
COMBINATION  
CASEMENT



PROJECTED



THERMAL CONTROL



AWNING



DOUBLE HUNG

**Also a Complete Line of CURTAIN WALL &  
Complete Line of BUILDING SPECIALTIES**

Modernfold Folding Doors  
Hotpoint Built-In Appliances  
Nutone Built-In Equipment  
Kwik-Set Hardware  
Armstrong Hollow Metal

Majestic Fireplace Grills  
Kitchen-Aid Dishwashers  
Sun Control Grills  
Kane Detention Screens  
Nord Wood Doors & Columns



**Southern Sash**  
SUPPLY OF MONTGOMERY, INC.

506 No. Court • P. O. Box 446 • Phone 265-3521 • Montgomery, Ala.