

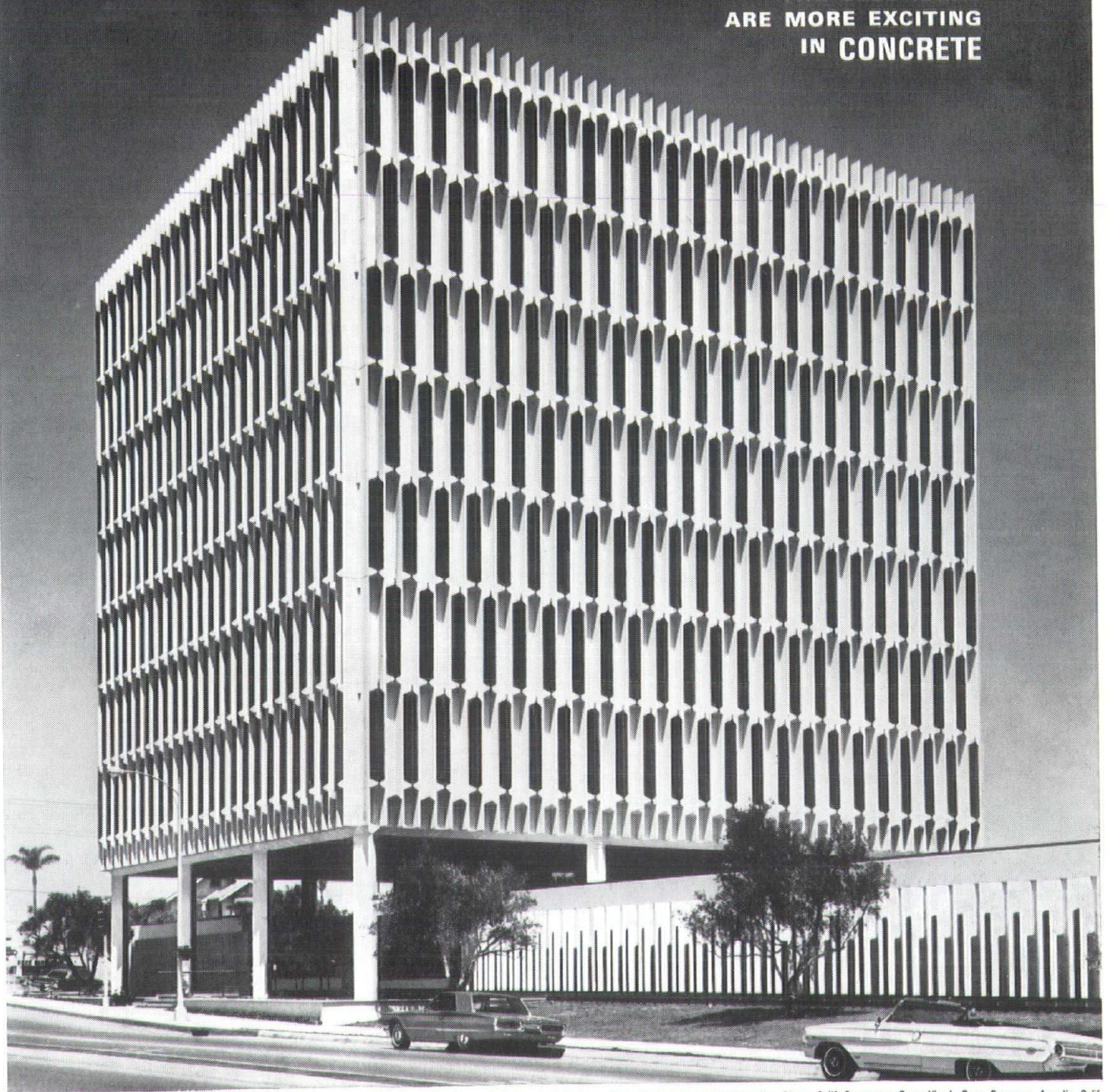


MERIT AWARD 1966 ALABAMA COUNCIL AIA
AUBURN UNIVERSITY LIBRARY BUILDING
DAVIS, SPEAKE & ASSOCIATES, BIRMINGHAM
ARCHITECTS AND ENGINEERS

ALABAMA ARCHITECT

January/February 1967

THE BEST IDEAS
ARE MORE EXCITING
IN CONCRETE



Owner: The Whitson Company, San Diego, Calif. Architect: Deems-Martin, Associates, San Diego, Calif. Structural Engineer: A. J. Blaylock and Associates, San Diego, Calif. Contractor: Peter Kiewit Sons Company, Arcadia, Calif.

OUT OF THE GEOMETRY OF STRENGTH... a dramatic pattern in beauty for walls of precast concrete

The new 8-story Hillcrest North Medical Center in San Diego achieves exceptional wall interest. The imaginatively-designed wall panels, with tapered sides and wedge-shaped spandrels, provide multiple facets that catch the light in ever-changing patterns. □ This striking effect grows out of the structural design itself. The panels, of structural lightweight concrete, are actually vertical load-bearing channels which also enclose space. Panels

are anchored integrally with the structure by cast-in-place connections. In this way, beauty is combined with high structural efficiency and economy. □ Such stimulating ways of using concrete are opening up a whole new field of architectural design. More and more, you see the beauty of concrete expressed in buildings of all types and sizes.

PORTLAND CEMENT ASSOCIATION

1214 South 20th St., Birmingham, Alabama 35205

An organization to improve and extend the uses of concrete

Donald L. Horton, AIA

President, 1967, Alabama Council of
The American Institute of Architects

The new President of the Alabama Council is a native of Sayre, Pennsylvania. He served in the U.S. Air Corps in World War II, saw service in Europe, and returned to graduate from Penn State in 1947 with a B. S. Arch. Degree. His wife, Lib, was from Alabama and it was natural for them to return to Alabama, where he registered and became a Corporate member of the Institute in October, 1950. Following a period with Pearson, Tittle & Narrows of Montgomery, he started his own architectural firm which he still heads. Don served as Executive Secretary of the Alabama Chapter A.I.A. until January of 1964. He has subsequently served the state organization as Secretary, Vice President, and now President. He is a member and Sunday School teacher at the Normandale Baptist Church, and is a member and past president of the Dixie Lions Club of Montgomery. His office is in the 88 Building on West South Boulevard. He and his family reside at 1415 Adrian Lane. They have three children, Dona, Marilyn, and Peck.



Paul Robertson Photo

"Operation Grassroots Was A Success..."

Operation Grass Roots was a success. It provided a place for a great number of members from out in the "boondocks" to meet the nebulous "they" from the Octagon; and to exchange ideas, gripes, aspirations, etc.

"They" turned out to be real people!

"They" run an organization with a 2 million dollar a year budget for our benefit, and with our money.

Two million dollars a year can and does do an immense amount of good for the profession. The "Grass Roots" program which your officers participated in should help to make it even more effective in the future.

"They's" biggest complaint — architects don't read their mail! Read and know what your money is doing.

— DONALD L. HORTON

CONTENTS

New President	3
Operation Grassroots	4
Comments on Grassroots	5
1967 Chapter Presidents	6
New Members	7
Auburn Student Branch	8
Speer Steps Down as Dean	9
Mobile Women Organize Architectural League	10
Product News	11
Nick Holmes Named to Historic Commission	14
1967 Convention Site	15

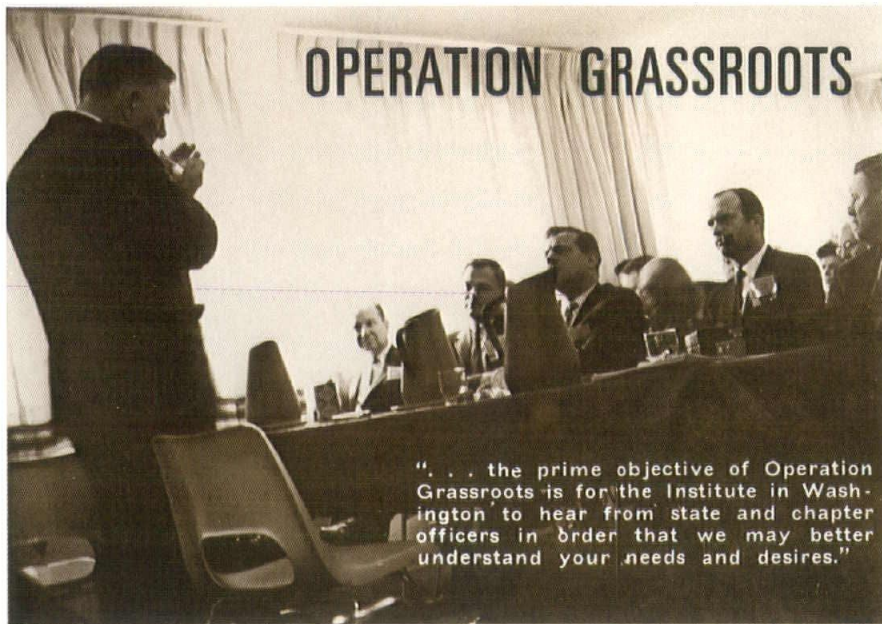
ALABAMA ARCHITECT

January-February 1967 Vol. 3, No. 1
Alabama Architect, official publication of the Alabama Council of the American Institute of Architects, is owned and published by the Council, an Alabama Corporation not for profit. It is published bi-monthly at the Executive Office of the Council, 501 Guaranty Savings Building, Montgomery, Alabama; telephone 264-4471 (area code 205).
Advertisements of products, materials and services adaptable for use in Alabama are welcome, but mention of names or use of illustrations of such materials and products in either editorial or advertising columns does not constitute endorsement by the Alabama Council, AIA. Advertising material must conform to standards set by this publication; and the right is reserved to reject such material because of arrangement, copy or illustration. Available at a subscription cost of \$3.00 per year. Single copies 50 cents. Roster issue \$2.00.

ALABAMA COUNCIL, AIA

Officers and Councilors 1967

President—Donald L. Horton—
Montgomery
Vice Pres.—A. Jackson Davis—
Huntsville
Secretary—Oscar W. Pardue—
Birmingham
Treasurer—Arthur Prince—Mobile
Past Pres.—Edward B. Baumhauer—
Mobile
Exec. Sec.—Jay Leavell—Montgomery
Birmingham Councilors:
Fritz Woehle (President), Paul Speake,
Nelson Smith
Mobile Councilors:
John McArthur (President), Thomas G.
Shepherd
Montgomery Councilors:
William Pearson (President), Howard
McElhaney, William G. McMinn
North Alabama Councilors:
Thos. A. Jones (President), Joe F.
Milberger



OPERATION GRASSROOTS

"... the prime objective of Operation Grassroots is for the Institute in Washington to hear from state and chapter officers in order that we may better understand your needs and desires."

George Kassabaum, Institute Vice President and Chairman of Council of Commissioners, welcomes attendees to St. Louis, while Institute President Charles M. Nes, Jr., FAIA, makes notes.



Photos by Jay Leavell



PHILIP MATHE, Commissioner, and Bill Scheick, Executive Director of the Institute, conduct a searching session dealing with Public Affairs. Attendees expressed most interest in public relations, both on a national and local level.

In a fast-paced two day session, architects from the entire central section of the U.S. (as far south as Texas to as far north as Minnesota) met to probe the year's challenges and explore solutions with Institute officers (practicing architects themselves) and staff members. How well they succeeded is summed up admirably by Don Horton (on page 3) and Chapter presidents (on opposite page).



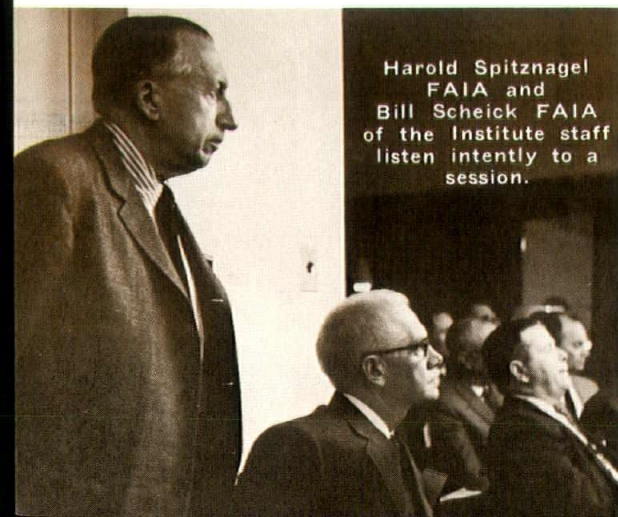
WILLIS MILLS, FAIA, led the Commission on Architectural Design through spirited discussions, as other Commissioners listened. Seated are Walter Scholer, Jr., Commissioner on Education and Research, George Kassabaum, and Philip Mathe (Public Affairs).



VIC GILBERTSON, FAIA, (standing) leads a spirited discussion group on matters dealing with the Commission on Professional Practice, which he serves as Commissioner.



ALABAMA ARCHITECT



Harold Spitznagel
FAIA and
Bill Scheick FAIA
of the Institute staff
listen intently to a
session.

Alabama Architects At Grassroots in St. Louis



Marshall Fischrupp, convention chairman for the 1967 State AIA convention in Mobile, extends a verbal invitation to attend the fall function to Dan Cowling, Little Rock architect and Commissioner of the Institute's Commission on the Professional Society, as Birmingham Chapter president Fritz Woehle acquiesces.



Bill Pearson, President of Montgomery Chapter chats with George Kassabaum, St. Louis architect and vice president of the Institute who will judge the Chapter's Honor Awards program in September and address the group. Looking on is councilor Bill McMinn, head of Auburn's Department of Architecture.

Comments

by Chapter Presidents

"Two things impressed me:

1. Getting to know some of the personnel of the Institute staff . . . for those of us who had not attended such meetings before and had not visited the Octagon, this was the first opportunity to match up faces and personalities with the names signed to the letters and literature we receive from the Institute. We are fortunate to have men like Bill Scheick, Executive Director, and Ray Gaio, Director of State and Chapter Affairs, in the Institute office.
2. Our State and Chapter groups are fairly compact geographically, and also advanced in organization, compared to many of the others. Our Chapters are active and the meetings are generally well attended, compared with some in the other states who are widely separated in area and have perhaps only quarterly meetings."

WILLIAM PEARSON,
President Montgomery Chapter

"On the other side of the fence from some of the Chapter presidents attending, I offer the following:

1. I would rather have Grassroots in October to find the problems of older (more experienced) officers.
2. I felt that our problems and questions were being fed into a big computer which had already been programmed with answers which were not completely matched."

FRITZ WOEHLE,
President Birmingham Chapter

Alabama Council of Architects president Don Horton visits with Charles Nes, president of The American Institute of Architects, who attended all sessions of Operations Grassroots and contributed much to its success.

"It seems to me that 'Grassroots' is successfully filling one of AIA's most pressing needs — appreciation and understanding at the Chapter level of the overall operation of the Institute. Appreciation of the fact that there are only 30 paid employees at Institute Headquarters to handle the affairs of an organization of over 19,000 members; that members, practicing architects like ourselves, take the time from their own practice to carry out the many institute programs. Understanding of the Commission-Committee structures and how the Chapter can benefit from the Institute. Understanding that the Institute program depends on the collective contributions of the Chapters. Understanding that since each and every member cannot take part in the Grassroots program, it is the duty of those that attend to take this appreciation and understanding back to their Chapters."

JOHN McARTHUR,
President Mobile Chapter



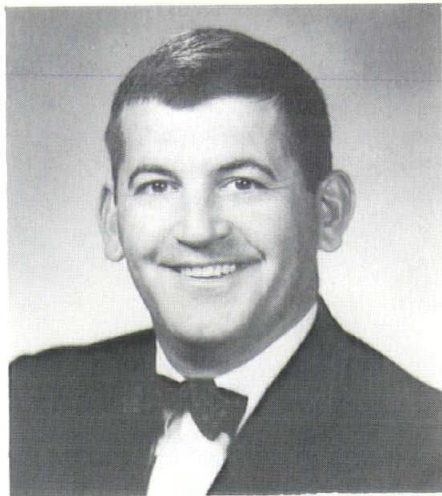
Mobile Chapter President John McArthur makes a point with Institute president Charles Nes. AIA Executive Director Bill Scheick (center) looks on approvingly.



Tom Jones, president of the North Alabama Chapter and recently elected representative to the Alabama Legislature, receives congratulations from Institute first vice president Robert Durham, joined by Joe F. Milberger, vice president of the North Alabama Chapter.

Chapter Presidents, Alabama A.I.A.

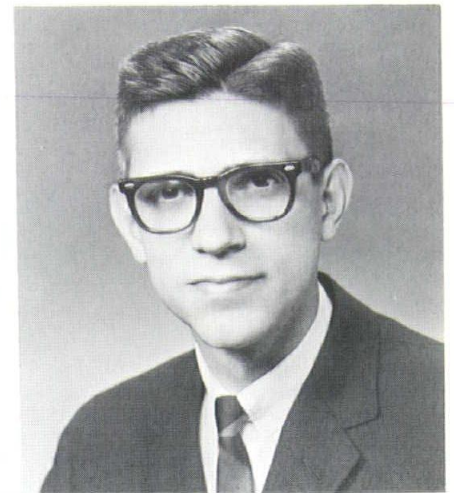
BIRMINGHAM CHAPTER



FRITZ
WOEHLE

FRITZ WOEHLE, born Harrisburg, Pennsylvania. Received Bachelor of Architecture Degree from University of Florida in 1952. Worked with W. F. Bigoney in Ft. Lauderdale. Registered in Alabama 1959, also registered Florida 1958. Self-employed, office address at 924 South 18th Street in Birmingham. Wife Lynn, children Lee and Fritz.

MONTGOMERY CHAPTER



WILLIAM
PEARSON

WILLIAM PEARSON, born Montgomery, Alabama. Educated at Huntingdon College in Montgomery, graduated Auburn 1952. Worked with Pearson, Tittle & Narrows. Registered in Alabama 1952. Partner in firm of Pearson, Humphries & Jones, 777 South Lawrence St. in Montgomery. Wife Gwen, children Jimmy, Jane, Joel and Jack.

MOBILE CHAPTER



JOHN
McARTHUR

JOHN McARTHUR, Jr., born High Springs, Florida. B.S. Architecture Degree from Georgia Institute of Technology in 1950. Worked with Toombs & Co., Finch & Barnes, and John J. Harte Co., all of Atlanta. Registered in Georgia 1960, Alabama 1961, and Florida 1966. Firm is Letson-McArthur, Architects, at 1860 Government Street in Mobile. Hobbies are golf and sports cars. Wife Betty, children John III, Robert, Patricia, Lisa and Mary.

NORTH ALABAMA CHAPTER



THOS. A.
JONES

THOS A. JONES, born Montgomery, Alabama. Received Bachelor of Architecture Degree from Auburn in 1951. Registered Alabama 1960, Tennessee, Mississippi, Georgia, and Florida in 1964. Worked for Hofferbert & Ellis, Gadsden; Warren, Knight & Davis, Birmingham; Lawrence S. Whitten, Birmingham. Self employed with offices at 107 S. Jefferson St. in Huntsville. Wife Betty, children Jan, Thomas III (Bo), and Monroe. Hobbies are golf, hunting, photography.

NEW MEMBERS

RAYMOND EDWIN TOWNSLEY, elected Corporate Member February 3, 1967, assigned to North Alabama Chapter. Ray was born in Lavalette, W. Va. on June 6, 1937. Educated at Iowa State College and Oklahoma University, with B. of Arch. in 1961. Worked with Thiokol Chemical Corp. (Facilities Design Group). Currently employed by Reed-Mullins & Associates in Huntsville. Hobbies are electronics, photography, gardening, and model building. Wife Sylvia Louise, children Jeffery Mark, Cynthia Louise, Graylia Rae.

WILLIAM FITZGERALD HILL, elected Corporate Member February 1967, assigned to North Alabama Chapter. Fitz was born in Florence, Ala., on May 17, 1935. Educated at Univ. of Alabama (53-55), Auburn (55-56), and North Carolina State (56-60). Employed by Barr and Tune, Florence; Lawrence S. Whitten & Son, Birmingham. Currently with Northington, Smith, Kranert & Associates. Registered in Alabama 1966. Hobbies, Hi-Fi, yardwork, which endears him to his wife Sylvia, and children Karen and Mary.

ELEVATED TO CORPORATE FROM PROFESSIONAL ASSOCIATE:

Charles A. Moss, Jr., 2201 Highland Avenue, Suite 215, Birmingham.
Neil Robert Bruce, 16 Office Park Circle, Birmingham.

READMITTED AS CORPORATE:
Carroll Columbus Harmon, 2201 Highland Avenue, Suite 201, Birmingham.

DROPPED FROM ROLLS DUE TO DEATH:

Matthews H. Tardy, 136 Columbia Avenue, Hampton, Va.

DROPPED FROM ROLLS DUE TO RESIGNATION:

Stanley B. Echols, 707 South 30th Street, Birmingham.

January-February, 1967



The Octagon House
E. B. Morris

Octagon Restoration Fund

Architects in Alabama are participating in a nationwide drive to raise \$900,000 for the restoration of the Octagon, national headquarters of the Institute and one of the most significant buildings in Washington, D.C. The White House was started earlier but the Octagon was completed first (in 1800). When the British burned the White House in 1814, President and Dolly Madison moved into the Octagon. Now a national monument, it has been the headquarters of The American Institute of Architects since 1900. Funds will be utilized to purchase the Octagon from the AIA (\$600,000) and renovate and furnish the building (\$300,000). A new enlarged headquarters building is planned to the sides and rear of the Octagon and its' gardens. (Sketch by E. B. Morris, Jr.)

NEW ASSOCIATE MEMBERS:

DONALD HUGH VOCE, 2409 Redmont Road (residence), Huntsville. Firm: Alexander, Rothschild & Joyce, Huntsville.

HOWARD C. BOZEMAN, JR., Firm: Milberger & Rutland, Huntsville.

JACK W. MALONE, Firm: Barr & Tune, Decatur.

CHANGE OF FIRM:

HARVIE P. JONES, Architect, now located at Franklin Professional Building, Franklin Street at Williams, in Huntsville.

CHANGE OF FIRM:

DICKSON & DAVIS, ARCHITECTS, AIA (formerly Dickson, Jones & Davis), 401 Lowell Drive, SE, Huntsville, Alabama 35801.

PEARSON, TITTLE, NARROWS & ASSOCIATES (formerly Pearson, Tittle & Narrows, Architects), 1st National Bank Building, Montgomery, Alabama 36104. Ross S. Brown admitted as a partner, Gene M. Parsons as an associate.

WIATT, WATSON AND COLE, ARCHITECTS (formerly J. Streeter Wiatt Associates), 746 Adams Avenue, Montgomery, Alabama 36104. Murray Watson and Robert Cole admitted as partners.

In an informal discussion, Auburn's delegates to the National Student AIA Convention consider the architectural implications of Frank Lloyd Wright's Guggenheim Museum. The delegates were Stan Tomlin, Uwe Rothe, and Robert Griffin.



All material on this page was designed and written by Student Associates of the Student Branch at Auburn.

AUBURN UNIVERSITY SCHOOL OF ARCHITECTURE

The Auburn student chapter of the AIA realizes the need to educate the public about architects and architecture as a major problem facing the profession today.

With this problem in mind we have established a public relations committee which is now preparing slide lectures and a traveling exhibition to be shown to high school students, Auburn University students, and the local public.

The chapter has also established a committee on programs to provide guest speakers which will supplement our educational program. This committee is also obtaining tapes of the recent national student AIA convention speakers.

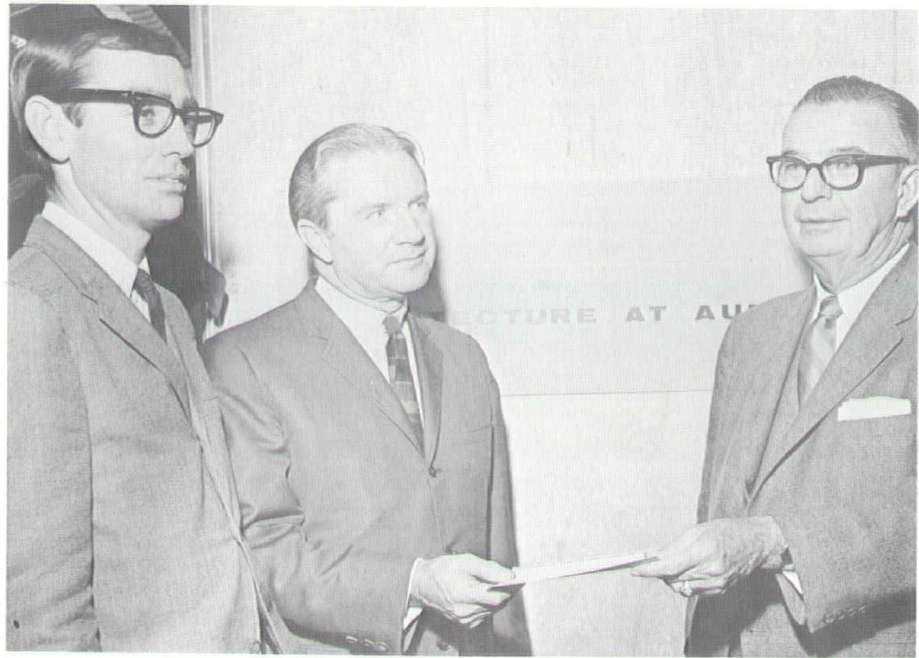
A committee on job placement has been established to help students find summer employment. Information and inquiries from Alabama architects would be welcomed and should be sent to Stan Tomlin, AIA chapter, Auburn University, Auburn.



To me the quest of harmony seems the noblest of human passions. Boundless, as is the goal, for it is vast enough to embrace everything, it yet remains a very definite one. —Le Corbusier

Auburn School of Architecture Gets Grant From Alabama Gas Corporation

Head professor of architecture at Auburn University, William G. Mc-Minn, and Dean W. A. Speer, School of Architecture and the Arts, left, accepted a check for \$1,500 recently from R. A. Puryear Jr., president, Alabama Gas Corporation, Birmingham. The grant is for Alagasco's annual student competition award at Auburn. Winner will be announced next spring.



William A. Speer to Relinquish Duties as Dean of School of Architecture

William A. Speer, dean of the School of Architecture and the Arts for the past four years, will relinquish his duties as dean next Sept. 1, 1967.

Dr. Harry M. Philpott, Auburn University President, said that this action is being taken at the request of Dean Speer so that he can return to the classroom. He will be appointed a full professor in the Department of Architecture and will teach courses in architectural design. The nine-month appointment will enable him to engage in other professional activities during the summer, including traveling and writing a book.

"We understand Dean Speer's desire to be relieved of his administrative duties in order to move back into the classroom. We are indebted to him for his service to the University and are fortunate to have a man of his experience and ability on the teaching staff," added President Philpott.

During Speer's period as dean, progress has been made in architecture, building technology, art, drama, and music. Several new positions have been added in the school, a program of visiting lecturers and artists established, a continuing adult education program started, Smith Hall obtained for the Department of Art and the old Military Building modified for ad-

ditional space for the Department of Music. Architecture has remained accredited by the National Architectural Accreditation Board, the Department of Art gained accreditation for the first time, and University officials are awaiting a preliminary review on accreditation for the Department of Music.

Dean Speer came to Auburn in 1962 from Clemson University where he had been on the faculty for seven years. He is a member of numerous professional societies and was recently named by Gov. George Wallace as a member of the Alabama Council of the Arts.

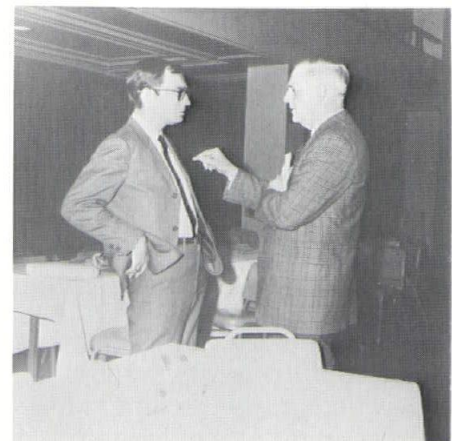
A faculty committee has been established in the near future to make recommendations to the president for a new dean.

At the annual convention of the Alabama Council, the following resolution was unanimously adopted:

WHEREAS, Wm. A. Speer has been Dean of the School of Architecture and the Arts at Auburn University for the years 1962-1966; and WHEREAS, the Alabama Council AIA has had close and cooperative association with Dean Speer in matters of the relationship between the School of Architecture and the Practicing Profession; and WHEREAS, Wm. A. Speer, during his four years as Dean of the School of Architecture and Arts, has contributed

an outstanding Service to the School of Architecture, the Auburn University and the State of Alabama; and WHEREAS, Dean Speer is retiring from his position as Dean as of September 1, 1967; NOW THEREFORE BE IT RESOLVED THAT The Alabama Council of the AIA does commend him for his contributions and services to the Profession of Architecture and the School of Architecture at Auburn University.

Convention Post Script



This unusual candid photo, reminiscent of a certain popular TV commercial, turned up in a batch of material left over from the annual convention of architects in Birmingham last December. Bill McMinn gets the point from Lawrence S. Whitten.

PROFESSIONAL CARDS

EVANS AND YOUNG

Consulting Engineers
Phone 322-4791
Brown-Marx Building
BIRMINGHAM, ALABAMA

HALLMARK & BROWDER ELECTRICAL & MECHANICAL ENGINEERS

139 Lee St. Tel. 265-5555
Montgomery, Alabama
Registered Professional Consultants
Alabama, Florida, Georgia, Mississippi

WILLIS ENGINEERING

REGISTERED: ALABAMA, TENNESSEE
& MISSISSIPPI

ROBERT C. WILLIS, P. E.
CONSULTING ENGINEER
ELECTRICAL AIR CONDITIONING
HEATING AND PLUMBING



P. O. BOX 916
PHONE 612 EAST TENNESSEE STREET
764-0817 FLORENCE, ALABAMA 35631

HEARD ABOUT

IMAGE DRAFTING?

It lifts images — it copies —
from virtually any original.

IN
SECONDS

Even Blue
Line Prints.



And it puts the images on a draft-
ing material . . . either vellum or
polyester . . . for making new
blueines or sepias.

Some have special adhesive back-
ings to allow you to add pre-
drawn or illustrated information
to current drawings.

- SAVES TIME
- SAVES MONEY
- ELIMINATES RE-DRAWING

For more information write:

John R. Moffitt Co., Inc.

Birmingham — Montgomery
2025 7th Ave. 108 N. McDonough

Your Comments, Please —

Readers are urged to send com-
ments on articles in ALABAMA
ARCHITECT to the editor, Jay
Leavell, P. O. Box 267, Montgomery
36101. Good, bad, or indifferent—
we'd like to hear from you.

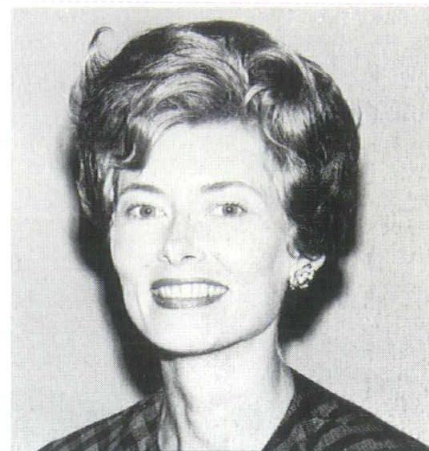
Mobile Women's Architectural League Organizes, Elects Officers

Mrs. John A. McArthur Jr. was
elected the first president of the
newly organized Women's Architec-
tural League of Mobile at the lunch-
eon meeting recently.

Mrs. William A. Phelps was
elected vice president; Mrs. Thomas
G. Shepherd, secretary; and Mrs.
Charles P. McCleskey, treasurer.

The objectives of the organization
are fellowship among the wives of
architects and service as an auxil-
iary to the Mobile Chapter of Ameri-
can Institute of Architects. League
projects will include participation in
community activities, particularly
those concerned with architecture
and related fields.

The meeting was held at the home
of Mrs. Nick Holmes Jr.



Mobile Press Register Photo
MRS. McARTHUR JR.
Named President of
Architectural League

ALABAMA'S LARGEST MORTGAGE BANKING OPERATION!

SPECIALISTS IN LONG-TERM FINANCING ON INCOME PROPERTIES

- Apartments • Commercial Buildings • Medical or Dental Clinics
- Shopping Centers • Warehouses • Industrial Properties
- F.H.A. • V.A. • CONVENTIONAL • RESIDENTIAL LOANS
- Nursing Homes • Offices

STATEWIDE OPERATION
BIRMINGHAM Phone 323-4481
HUNTSVILLE Phone JE 9-3701
MONTGOMERY Phone 265-9556

**COBBS,
ALLEN
& HALL**
MORTGAGE COMPANY, INC.

OPELIKA Phone 745-6451
MOBILE Phone 471-1526
DECATUR Phone 355-1441
PENSACOLA Phone 433-6569

Paul Robertson

ARCHITECTURAL PHOTOGRAPHY

- EXTERIORS
- INTERIORS
- AERIAL
- COLOR
- BLACK & WHITE

New Location, 847 South Perry St.
Montgomery, Ala. Phone 263-0413

Special attn. to work anywhere in the State

NEWS ABOUT PRODUCTS AND SERVICES



Southern Sash Supply of Montgomery, Inc., has been appointed a dealer for the sale and installation of a new product called "Scotchint" Brand Solar Control Film.

"Scotchint" Brand Solar Control Film is a unique product that improves building appearance and creates "perfect shade" when applied to existing glass windows, according to Joe L. Snyder of Southern Sash. "This revolutionary development of 3M research introduces a new concept of sun control," he said. "It is based on the ability of this film to repel the sun's detrimental rays while maintaining exceptional optical clarity while making the glass shatter resistant."

"Scotchint" film effectively reduces radiant heat and glare, said Snyder, and eliminates most of the sun's ultra-violet rays—the cause of color fading and finish cracking. Unlike ordinary shading methods, this product forms a reflective shield which reflects the sun's rays back through the glass.

A study made by a leading university showed that temperatures in a room protected by "Scotchint" Film were up to 15° cooler than a control room without the film.

Now available in the Alabama market is a quality rotary kilned expanded lightweight shale produced by Vulcan Materials Company at its Parkwood plant near Bessemer.

After several years of exploration of shale deposits throughout the state, the deposit at Parkwood was found to contain the qualities best suited to make this product at the quality level desired.

Two years' research of the deposit was made before Vulcan reached the decision to build the plant at this location. The Parkwood plant now is producing a lightweight aggregate of the highest quality. Semi-lightweight concrete of 3,000; 4,000; and 5,000 psi can be produced having a plastic cubic foot weight of 115 pounds and less.

The all lightweight structural con-

crete of 3,000; 4,000; and 5,000 psi design has a plastic weight of 95 pounds or less per cubic foot. Vulcan also is producing a lightweight aggregate for making concrete blocks giving the finest in block texture, and a class "A" 8 x 8 x 16 unit will weigh only 21 to 23 pounds.

Naturally, Vulcan's expanded shale is competitive in price. Full information can be obtained from James E. Agernathy, Sales Manager, Lightweight Products, Southeast Division, Vulcan Materials Company, or Donald L. Triplett, Sales Engineer, 9

Office Park, Birmingham, Alabama 35223, or call them at 879-2401.

Indurall has been named the distributor for Gilford vinyl wallcoverings in the states of Alabama and Mississippi.

The Gilford line includes over 2,000 colors in over 100 different textures and patterns. This line of vinyl wallcovering includes the new and revolutionary wallcovering which meets the Flame Spread rate requirements of 20 or less, as tested by Underwriters Laboratories (a feature required for Hill-Burton jobs). This vinyl wallcovering is Gilcolor, a combination of Gilford vinyl fabrics with DuPont Tedlar polyvinyl fluoride stain resistant film.



PHOTOGRAPHY

- Aerial • Color • Mural
- Progress • Black & White

Scott Photographic Services

458 So. McDonough St.
Montgomery, Ala.

Assignments Accepted Over the State

John Englehardt Scott, Jr.

Tel. 262-8761

ELECTRONIC ■ AIR CONDITIONING

REFRIGERATION ■ PARTS AND SUPPLIES



NOLIN-McINNIS, Inc.,

Wholesale

P.O. Box 2229

Telephone 263-3863

211-215 Commerce Street

Montgomery 3, Alabama



P. O. Box 1585

MONTGOMERY, ALA. 36102

We are seriously in this Dynamic Business of selling "New Steel"

For Service, Phone:
265-4431 — 265-9733

GAMBLE'S, INC.
1401 North Decatur Street

As countless innovations alter the technology of construction and continually broaden the application of steel, it becomes mandatory that the serious steel man consider the "Whole World of Steel" as his province.



GRESHAM, WILLIAMS AND JOHNSON CO.

General Contractors

P. O. BOX 1708
DECATUR, ALABAMA 35601

PEARCE, DEMOSS & KING, INC.

GENERAL CONTRACTORS

1308 Church Street, N. E.

Decatur, Alabama

SATISFIED CUSTOMERS — OUR BIGGEST ASSET



*Serving the
Architects and
Builders of
the State*

**ALABAMA
INDUSTRIES**

**CONCRETE
ASSOCIATION**

ACIA

P. O. BOX 4157
401 BELL BUILDING
MONTGOMERY, ALABAMA

*Building for Permanence
with Concrete Products*

Matthews H. Tardy, Member Emeritus, Dies in Virginia

Funeral services for Matthews Hollowell Tardy, 78, were held recently at the Episcopal Church of the Advent. Burial was in the family plot at Elmwood Cemetery.

The distinguished architect and genealogy authority was a resident of Birmingham many years before moving to Virginia, where he died January 14, in a Hampton hospital.

Mr. Tardy, born in Huntsville, moved to Birmingham in 1890 with his parents, Clarence M. and Anne Southerne Tardy, who were active in business, civic and cultural activities of the city and state.

Educated in Birmingham schools, Mr. Tardy served in France during World War I and returned to Birmingham for a number of years before he made his home in Hampton, Va.

He was widely known as a designer of public buildings in a number of Southern states. He was a member of the Institute of Architects in Alabama, Virginia, Georgia and North Carolina and a member of the American Institute of Architects.

He was registered in Virginia, North Carolina, Georgia and Alabama. He was elected to Member Emeritus of the Institute effective January 1, 1956. He had been a member of AIA since October 2, 1922.

In recent years Mr. Tardy became active in genealogical research, an interest begun by his mother, and was recognized as an authority on the subject. He was a member of the Order of First Families of Virginia, the Sons of Colonial Governors and the Order of the Crown and a former member of the Advent here.

Mr. Tardy is survived by his wife, Mrs. Margaret M. Tardy and a daughter, Mrs. Phillip L. Getzinger of Hampton.



Bear Lumber Company, Inc.

LUMBER - MILLWORK - BUILDING MATERIALS
Box 2071 — Jefferson-Perry Streets
Montgomery, Alabama 36103
Telephone 262-2961

- Washed Sand
- Washed Gravel
- Clay Gravel
- Grading
- Lawn Sand
- Top Soil
- Fill Dirt
- Paving

Dixie Sand & Gravel Co., Inc.

Wash. Ferry Road and B'ham Highway
POST OFFICE BOX 1128
MONTGOMERY, ALABAMA 36102

For the finest in finishes...

Who Is No. 2 In The Paint Industry?
STACO IS NOT!!

(We don't know who is. Nor do we covet the spot)

We are far below No. 2 in sales volume, nationally.

IN QUALITY of our products, we would not be satisfied with No. 2. A tie for No. 1 is the least we will settle for.

IN SERVICE, we have contractors, engineers, builders — and yes, even architects who will vote us the No. 1 spot. In the restricted territory we serve we have demonstrated our ability to give prompt delivery on architectural and special coatings that is unsurpassed. In fact, we are told by some that our service is unequalled. The proximity of our plant, the availability of our technical staff and our eagerness to give superior service enable us to get the job started and keep it moving on schedule.

OUR PRICES per gallon are neither second highest nor second lowest.

No, we just don't fit into any No. 2 spot!

Some architects are not familiar with Staco architectural finishes, Stacolite epoxies, Stacol floor finishes and the variety of fine coatings that we can furnish.

Vastine Stabler, L. C. Burks, Philip Boyd, Fred Davis, Claude Kersh, Bill Hathcox, Buddy Strickland or Aubrey Hunnicutt would welcome the opportunity of telling you about Staco coatings.



STABLER PAINT MFG. CO.
INCORPORATED

HOME OFFICE AND PLANT —
3827 First Avenue, North / Birmingham, Alabama 35222

Nicholas H. Holmes, Jr. Named to Alabama Historic Commission

Mobile architect Nick Holmes was one of eight members named by Governor Wallace to the Alabama Historic Commission.

Nick, who has more than a passing interest in history and archeology, looks forward to working with the Commission.

"As I understand it," he said, "the duty of this Commission is to obtain, preserve and open to the public any buildings, sites, and monuments of historical, archaeological, and architectural interest.

"It is our hope and belief that such a program will make our state more interesting to both visitor and native."

A transplanted Yankee, Nick was born in Chicago in 1924, took his Bachelor of Architecture Degree at Auburn, graduating in 1949. He did post graduate work at the Royal Danish Academy in Copenhagen, Denmark. Self employed as a partner in Holmes & Geer, Architects & Engineers, he was registered in Alabama in 1953, in Mississippi and

Florida in 1956.

Other members include Dr. Ralph Draughon, president emeritus of Auburn University; Dr. M. C. McMillan, chairman of the department of history at Auburn; Dr. Charles G. Summerall, head of the department of history at the University of Alabama; Milo B. Howard, director of the State Department of Archives and History; Mrs. James B. Allen, wife of the former Lt. Governor; John M. Ward, former executive director of the Alabama Chamber of Commerce; and Mrs. Sidney Van Antwerp of Mobile.

A good start has been made in Mobile in historic preservation, and Huntsville is well underway with a program. Little is known of activities in other parts of the state.

There's plenty of work for the Commission to do—and not a minute too soon, before the bulldozers and wreckers get there.

Action Alabama



ONLY THE ALABAMA ARCHITECT

... can lead Alabama toward realization of an environment which expresses our ideals and capabilities.

Vulcan Materials Company

SOUTHEAST DIVISION / P. O. BOX 7324-A • BIRMINGHAM, ALABAMA 35223



LETTERS to the editor

Dear Mr. Leavell:

I appreciate very much having the photographs of myself and wife that were taken at the 50th Anniversary Architects meeting.

I had been very disappointed in not previously receiving any pictures whatsoever, after having been photographed so very frequently that evening.

The copies you mailed me are very satisfactory.

Sincerely yours,

JOHN A. WETZEL

1424 Montclair Road (Fairhaven)
Birmingham, Ala. 35210

Alabama Council Holds First Quarterly Meeting

Meeting in Montgomery on January 27, the Council held its first meeting of the year. In a full days agenda, the 15 members attending heard a report on "Operation Grass-roots" by attenders, a report from Chapter presidents, and an important briefing from legal counsel Truman Hobbs. In other busines, architects discussed the proposed Governor's Conference on Natural Beauty, recent changes in A.I.A. documents, and fee adjustment activities. Next meeting is set at Auburn University in May.

ALABAMA ARCHITECT

Mobile To Be Site Of 1967 Architects Convention

"It's official!" proclaims Marshall Fischrupp, major domo of the '67 Architects convention, which is set for October 27-28 at the Sheraton Battle House in the port city.

All committees have been appointed and many are already working to secure a top-notch slate of outstanding speakers on architectural matters, plus interesting educational products exhibits.

The State A.I.A. Honor Awards program will be a highlight again this year. Also being planned is a "Mardi Gras" ball.

All A.I.A. members in Alabama are hereby warned to clear their calendars for these important dates.

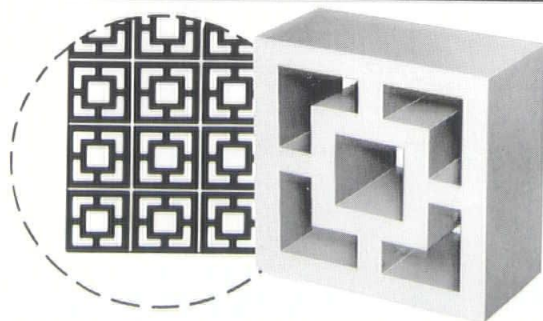
TEAGUE HARDWARE CO.

174 COMMERCE
PHONE 262-0541

The Helburn Company, Inc.

FOOD SERVICE EQUIPMENT - CAFE - BAR
HOTEL SUPPLIES and REFRIGERATION
J. E. ALFORD 434 Montgomery Street
Telephone 262-8346 Montgomery, Ala.

NATCO "CERAMICOAT" SOLAR SCREEN TILE



DECORATIVE • FUNCTIONAL

Designed to protect expansive window areas from direct solar radiation. Natsol Clay Solar Screen is furnished in the new "Ceramicoat" finish with an attractive smooth matt texture in a variety of pleasing colors. Available in many popular shapes and sizes to meet decorative appeal and functional requirements.

NATCO CORPORATION

CONSTRUCTION PRODUCTS DIVISION

327 Fifth Avenue • Pittsburgh, Pa. 15222

BIRMINGHAM SALES OFFICE:

726 South 37th Street • P.O. Box 30050, Birmingham, Ala. 35222

Telephone: 328-0525

*Electric heat
costs
3 times more
than GAS!*

*That's
Matchless
?*

**GAS HEATS
BEST TOO!**

alagasco
ALABAMA GAS CORPORATION