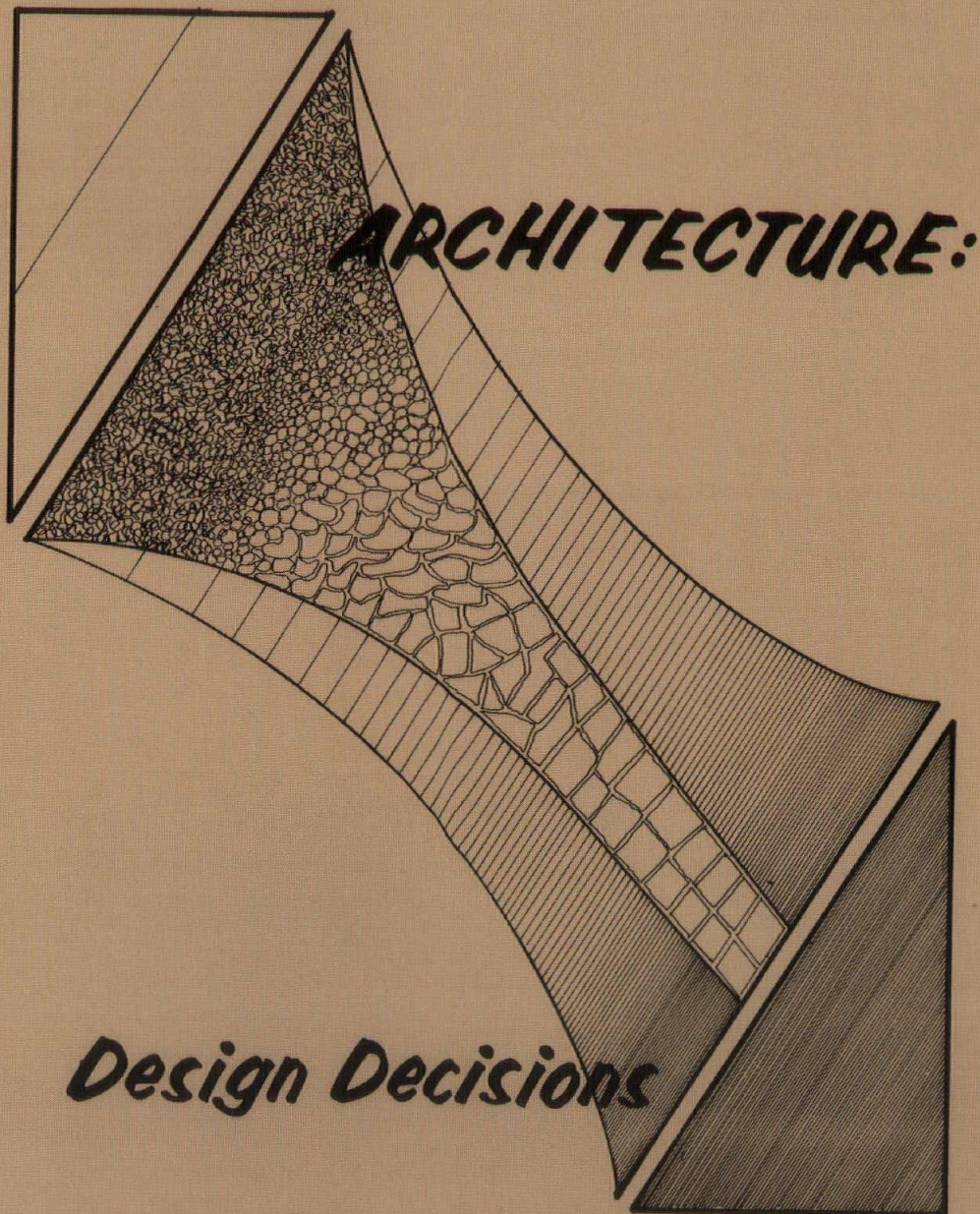


ALABAMA ARCHITECT

OFFICIAL PUBLICATION OF THE ALABAMA COUNCIL
OF THE AMERICAN INSTITUTE OF ARCHITECTS

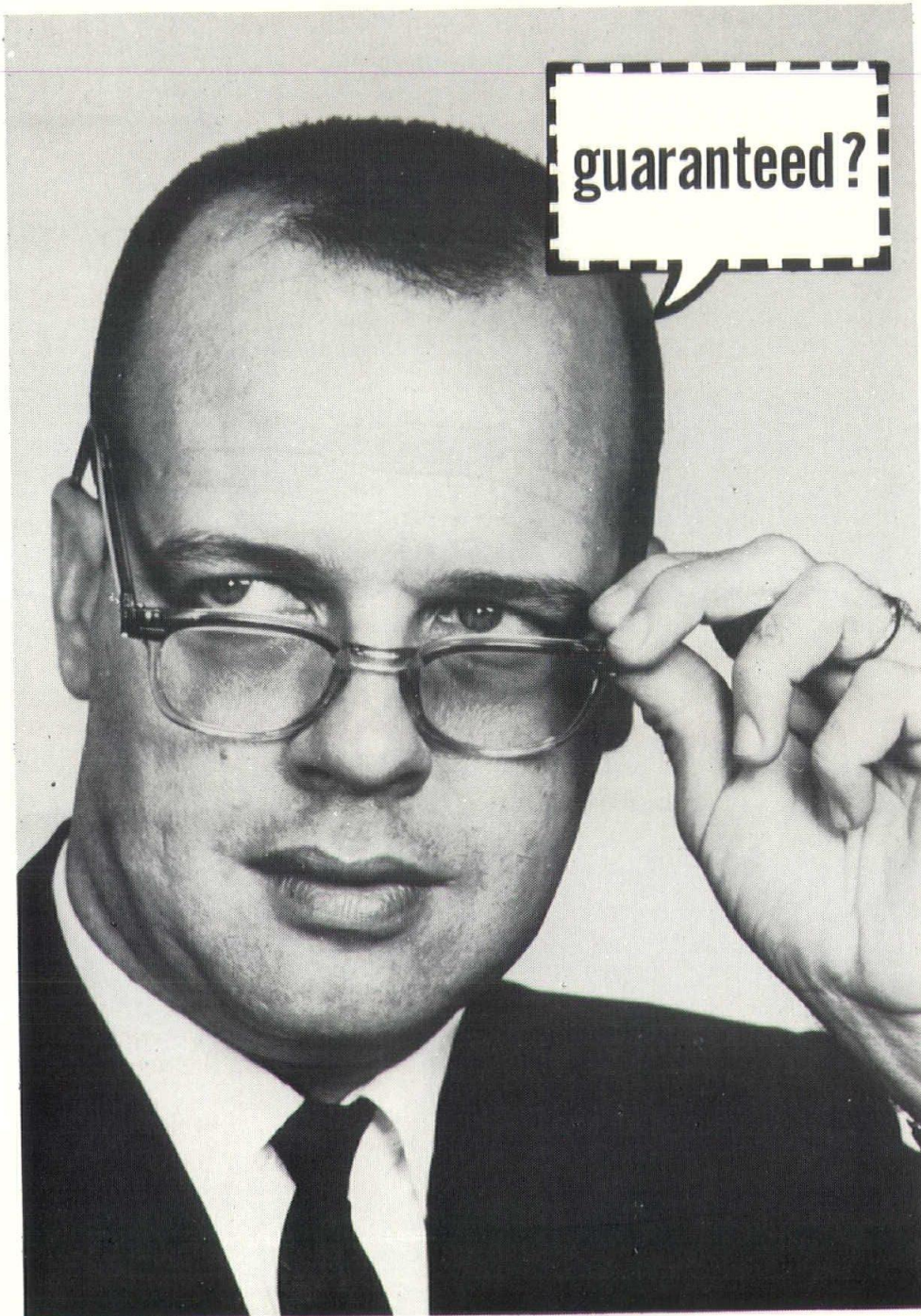
SEPTEMBER-OCTOBER 1965



CONVENTION ISSUE

ANNUAL CONVENTION • MONTGOMERY
NOVEMBER 4-5-6, 1965

Operating costs for *flameless*
ELECTRIC heating can be guaranteed!



Yes . . . guaranteed! Only flameless Electric heat offers you guaranteed operating costs. Want to know more about this "cents-able" heat? Call a Certified Electric Dealer or our nearest office.



Alabama Power

Company... *Investor Owned — Helping Develop Alabama*

PRESIDENT'S MESSAGE



Alabama Council and Chapters of A.I.A. extend to our guests, exhibitors, members and friends the heartiest "Welcome!" to the First Alabama Council A.I.A. Convention.

We are indeed happy and grateful to have with us speakers, panelists and others of national and international renown. We expect to benefit greatly from this association and hope that benefit and pleasure will be mutual.

It is our sincere desire that all in attendance join us in extending and implementing the policies of A.I.A. and that in so doing all are brought closer in common purpose and convivial fellowship.

HUGH W. ELLIS
President
Alabama Council AIA

ALABAMA ARCHITECT

OFFICIAL PUBLICATION OF THE ALABAMA COUNCIL
OF THE AMERICAN INSTITUTE OF ARCHITECTS

SEPTEMBER-OCTOBER 1965

IN THIS ISSUE . . .

<i>PRESIDENT'S MESSAGE</i>	Page 3
<i>MESSAGE FROM PRESIDENT OF MONTGOMERY CHAPTER AIA</i>	Page 4
<i>ANNUAL CONVENTION SPEAKERS</i>	Page 5-7
<i>ANNUAL CONVENTION PROGRAM</i>	Page 8
<i>CHAPTER NEWS</i>	Page 16
<i>LETTERS TO EDITOR</i>	Page 18
<i>HISTORIC INTEREST AND 50TH ANNIVERSARY NEWS</i>	Page 19

ALABAMA COUNCIL, AIA OFFICERS AND COUNCILORS—1965

OFFICERS

President	Hugh W. Ellis	220 South 8th Street	Gadsden, Alabama
Vice President	Edward B. Baumhauer	1157 Springhill Avenue	Mobile, Alabama
Secretary	Donald L. Horton	1415 Adrian Lane	Montgomery, Alabama
Treasurer	Paul M. Speake	3004 7th Avenue, South	Birmingham, Alabama
Executive Secretary	Jay Leavell	P. O. Box 267	Montgomery, Alabama

COUNCILORS

BIRMINGHAM—	Edward J. Bondurant, President, Birmingham Chapter AIA Bill Williams, Position No. 1 Bill Chambers, Position No. 2
MOBILE—	J. Frederick Dietz, President, Mobile Chapter AIA C. Dewey Crowder, Councilor
MONTGOMERY—	Parker Narrows, President, Montgomery Chapter AIA Joseph L. Donofro, Position No. 1 William G. McMinn, Position No. 2
NORTH ALABAMA—	A. Jackson Davis, President, North Alabama Chapter AIA

EDITORIAL STAFF—

Jay Leavell, Managing Editor, P. O. Box 267, Montgomery, Ala.
Associate Editors:
Birmingham: Don Morrison, 701 South 37th Street, Birmingham
Mobile: John A. McArthur, Jr., 305 Glenwood Street, Mobile
Montgomery: Donald A. Fletcher, 303 Washington Ave., Montgomery
North Alabama: Joe Milberger, 100½ Jefferson St., S.W., Huntsville

Alabama Architect, Official Publication of the Alabama Council of the American Institute of Architects, is owned and published by the Council, an Alabama Corporation not for profit. It is published bi-monthly at the Executive Office of the Council, 501 Guaranty Savings Building, Montgomery, Alabama; telephone 264-4471 (area code 205).

Editorial contributions, including plans and photographs of architect's work, are welcomed but publication cannot be guaranteed. Unsolicited works should be accompanied by sufficient return postage. Opinions expressed by contributors are not necessarily those of the Editor or the Alabama Council, AIA. Editorial material may be freely reprinted by other official AIA publications, provided full credit is given to the author and to ALABAMA ARCHITECT for prior use.

Advertisements of products, materials and services adaptable for use in Alabama are welcome, but mention of names or use of illustrations of such materials and products in either editorial or advertising columns does not constitute endorsement by the Alabama Council, AIA. Advertising material must conform to standards set by this publication; and the right is reserved to reject such material because of arrangement, copy or illustration. Available at a subscription cost of \$3.00 per year. Single copies 50 cents. Roster issue \$2.00.
Printed by Birmingham Printing Company.

MESSAGE FROM THE PRESIDENT THE MONTGOMERY CHAPTER, AIA



PARKER NARROWS
President
Montgomery Chapter, AIA

The members of the Montgomery Chapter A.I.A. are tremendously pleased to be the official host Chapter for the first Annual Convention of the Alabama Council, and we are honored that the capitol city of our state was chosen as the site of this historic meeting.

Committee chairmen, as well as members of the committees and of the Chapter have worked diligently to make this an outstanding event.

With the cooperation of the Institute in Washington, we have secured a number of America's most distinguished architects to appear on the program. It is our hope that the convention theme, "Architecture: Design Decisions," will provide a springboard for some serious discussion concerning the many problems that beset us today, and offer some positive solutions which will lead to a better environment.

The Montgomery Chapter is also doing its part in carrying out the current Institute program. We are arranging for showings of the AIA film "No Time for Ugliness" to interested groups in the city. We are making photographs of objectionable as well as pleasing features of Montgomery, to be made into a booklet. We are compiling a priority list of buildings of historic interest and plan to initiate a survey to provide full information concerning these buildings. We are working with the city and other related organizations in the urban renewal program.

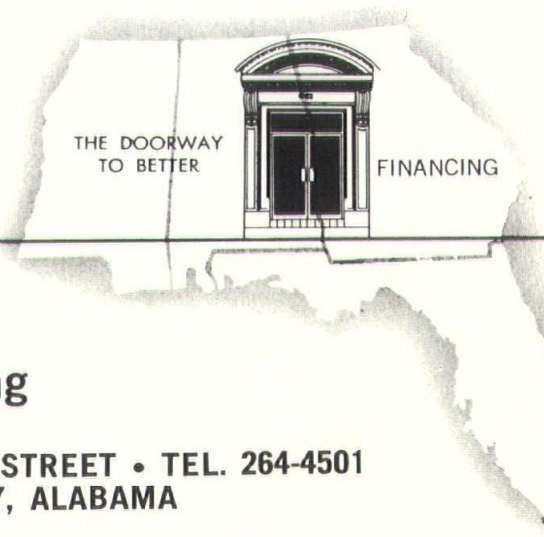
This has been an eventful year for the Montgomery Chapter. It has served to open our eyes to the many responsibilities which all of us as architects face in our civic as well as our professional duties. It is, then, with a sense of deep pride that we as host Chapter present the first Annual Convention with its significant theme and inspiring program.

We sincerely hope to see each member of the A.I.A. in Alabama at this First Annual Convention in Montgomery on November 4-5-6th.

E.S. WATTS & CO. INC.

MORTGAGE BANKERS

Sound financing
is a basic part
of complete design



Long Term Residential,
Commercial and Industrial Financing

130 CLAYTON STREET • TEL. 264-4501
MONTGOMERY, ALABAMA

Serving Your Major Long Term Financing Needs

First Annual Convention Alabama Council, American Institute of Architects



JEFFERSON DAVIS HOTEL, MONTGOMERY, ALABAMA
NOVEMBER 4-5-6, 1965

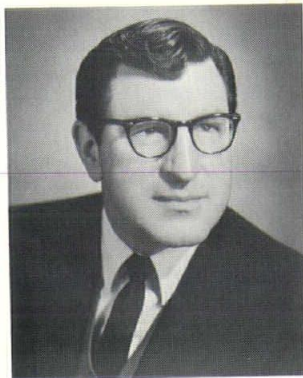


Featured Speaker
EDWARD DURELL STONE, FAIA

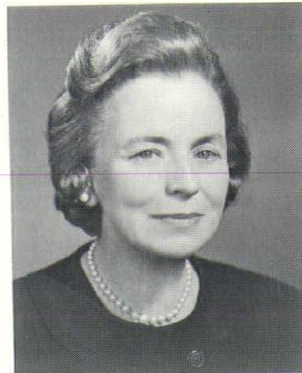
The first Annual Convention of the Alabama Council A.I.A. promises architects, wives, guests, and others attending one of the most thought-provoking and informational sessions yet held in this state. Besides an array of outstanding speakers drawn from a field of nationally known architects, other activities include a fast-moving Products Exhibit, a Design Seminar made up of Institute members from the four corners of the U.S., plus entertainment and social events scheduled for maximum enjoyment.

Following the Annual Meeting on Friday, November 5th, the noon luncheon speaker will be Edward Durell Stone, FAIA, native Arkansan now practicing in New

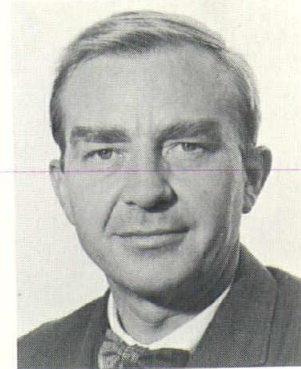
York. Stone's identity as a designer was established in the 1930's by such buildings as New York's Museum of Modern Art and the Conger Goodyear house. This was followed by the pace-setting El Panama Hotel, the famous American Pavilion for the Brussel's World's Fair (which was awarded several Gold Medals), the United States Embassy at New Delhi, the headquarters for the National Geographic Society in Washington, and numerous other large scale works. His honors are too numerous to mention. Mr. Stone will also serve as judge on a special design problem participated in by architectural students at Auburn. In conjunction with the design problem, he will conduct an informal seminar for the students.



ARTHUR Q. DAVIS



CHLOETHIEL W. SMITH



RICHARD SNIBBE

PANELISTS ON AESTHETIC DESIGN

Arthur Q. Davis, partner of firm CURTIS AND DAVIS, New Orleans, Bachelor of Science—Tulane University; Bachelor of Architecture—Tulane University; Master of Architecture—Harvard University; Fellow, The American Institute of Architects; Member of National Committee on Aesthetics AIA. Faculty member, Tulane School of Architecture. Participant in Architectural Seminars at VPI, Yale, University of Florida, Harvard, National Honor Awards Jury AIA, University of Southern California. President of Orleans Gallery (Contemporary Art.) Serving as Moderator for Panel on Aesthetic Design, Alabama Council AIA State Convention.

Chloethiel Woodard Smith, firm CHLOETHIEL WOODARD SMITH & ASSOCIATES, ARCHITECTS. Bachelor of Architecture (with Honors)—University of Oregon; Master of Architecture—Washington University; Guggenheim Fellowship; Fellow, The American Institute of Architects and Trustee Fred L. Lavanburg Foundation; Member of President's Council on Pennsylvania Avenue; American Institute of Planners, Metropolitan Washington Board of Trade, Columbia Historical Society, many others. Author, lecturer, has made radio and TV presentations on City Planning. 12 awards for completed work from AIA, FHA, Washington Board of Trade, Masonry Institute.

Richard W. Snibbe, A.I.A., has own office in New York since 1961. B.A. at St. John's College in Annapolis, Harvard Graduate School of Design. Tennis Pavilion for Princeton University received Award of Merit in AIA Honor Awards and Award of Excellence from American Institute of Steel Construction. Associate in office of Edward Durell Stone and participated in design of United States Embassy at New Delhi. Recipient of 1957 Brunner Scholarship. Guest lecturer at Columbia University, Pratt Institute and Cooper Union. Author of book on Small Commercial Buildings. Conceived and executed First Conference on Aesthetic Responsibility in New York City in 1962.

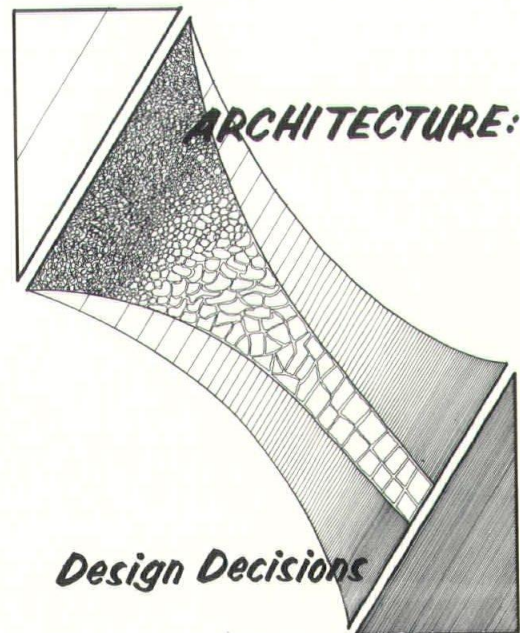
Hosts:

Montgomery Chapter AIA

General Chairman:
PARKER NARROWS, AIA
1st National Bank Building

CHAIRMEN OF COMMITTEES: Assistant Convention Chairman, MARK TILLER, AIA/ Products Exhibits Chairman, CHARLES HUMPHRIES, AIA/ Meeting Facilities Chairman, DON HORTON, AIA/ Entertainment Chairman, JIM SEAY, AIA/ Student Activities, BILL McMINN, AIA/ Finance Chairman, BILL PEARSON, AIA/ Registration Chairman, TOM KIRKLAND, AIA/ Ladies Activities Chairman, HOWARD McELHANEY, AIA/ Publicity Chairman, MURRAY WATSON, AIA/ Program Chairman, MORELAND SMITH, FAIA/ Decorations Chairman, JAMES D. MASEY/

Convention Theme



ALABAMA ARCHITECT



MARC GOLDSTEIN



ELLIOTT CARROLL

SEMINAR

Marc Goldstein, Participating Associate with firm of SKIDMORE, OWINGS & MERRILL, San Francisco. Bachelor of Architecture-Yale University, 1958; Master of Architecture, 1959; Fulbright Award to Italy, 1959-60; joined present firm in 1961; Project designer on several projects, including resort hotel on island of Hawaii, office building in Oakland, California; large office building development for the Australian Mutual Provident Society in Melbourne, Australia; and an apartment complex for the elderly in Palo Alto, California; in planning work in Washington, D.C. pertaining to Pennsylvania Avenue and the National Mall.

Elliott Carroll, AIA, Administrator of the Department of Public Services for The American Institute of Architects. Member of AIA staff since 1960. His Department includes Directors of Departments of Public Information and the Library, and the administration of the AIA JOURNAL. Was previously Administrator of AIA Department of Professional Services from 1963-65. Is a 1944 graduate of Harvard College, later attended Harvard Graduate School of Design. In practice since 1954 and a registered architect since 1957, was an associate in North Carolina firm. 22 Years service in U.S. Navy Submarine Reserve, recently promoted to Captain.

VICE-PRESIDENT, REGIONAL DIRECTOR, A.I.A.

Rex Whitaker Allen, AIA, firm of REX WHITAKER ALLEN AND ASSOCIATES, Architects, San Francisco; A.B. at Harvard College, B. Architecture at Harvard Graduate School of Design, Hospital Administration Course at University of California; travel in Europe, Asia, Africa, Mexico, Canada, speaks French & German; member of AIA, Association of Western Hospitals, American Association for Hospital Planning, International Hospital Federation, many others. National Vice President of American Institute of Architects 1964-65, reelected for 1965-66 term; National Chairman of Committee on Hospital Architecture. Author and speaker, was AIA representative at International Federation of Hospitals Congress in Stockholm, Sweden.

Dan C. Cowling, Jr., partner in firm of COWLING AND ROARK, Architects-Engineer, Little Rock, Arkansas; Graduate Columbia Military Academy (Tennessee); Arkansas Polytechnic College, University of Arkansas; member of AIA and Construction Specifications Institute; experience since 1952 following graduation, private practice since 1957; secretary of Arkansas Chapter AIA for 3 terms, president for 2 terms; member of Gulf States Regional Executive Committee since 1963, Director for Gulf States Region 1965-68; chairman of Executive Committee same term; AIA affiliation includes membership on Committee on State & Chapter Organization; Commission on the Professional Society; Committee on Building Materials and Systems; and member, National Board of Directors.



REX WHITAKER ALLEN



DAN COWLING

OFFICIAL LIST OF PRODUCTS EXHIBITORS 1965 CONVENTION ALABAMA COUNCIL AIA

(Number Indicates Booth Assigned)

- | | | | |
|--|--|---|--|
| 1. United Plywood Corp. Montgomery, Ala. | 10. Jenkins Brick Co. Montgomery, Ala. | 18. Bell Company, Inc. Birmingham, Ala. | 27. Gem Aluminum Products, Inc. Lake Worth, Fla. |
| 2. Wagstaff Hardware Co. Montgomery, Ala. | 11. & 12. Bodine, Bryson & Rolling Birmingham, Ala. | 19. Plastic Clad Corporation Birmingham, Ala. | 28. Airotec, Inc. Atlanta, Ga. |
| 3. Armarlite Div. Anaconda Aluminum Co. Atlanta, Ga. | 13. Kawneer Co., Inc. Birmingham, Ala. | 20. Electronics Engineers Montgomery, Ala. | 29. Alabama Seamless Floorings Montgomery, Ala. |
| 4. Mobile Paint Mfg. Co. Mobile, Ala. | 14. Southern Bell Telephone Co. Montgomery, Ala. | 21. Bonitz Insulation Co. of Alabama Birmingham, Ala. | 30. Vulcan Materials Co. Birmingham, Ala. |
| 5. Cooke Associates Stone Mountain, Ga. | 15. Alabama Concrete Industries Assn. Montgomery, Ala. | 22. Day-Brite Lighting Birmingham, Ala. | 31. Alabama Engineering & Supply Co. Montgomery, Ala. |
| 6. The Celotex Corp. Atlanta, Ga. | 16. Stabler Paint Mfg. Co. Birmingham, Ala. | 23. M. J. Gorrie & Associates Birmingham, Ala. | 32. Bickerstaff Clay Products Columbus, Ga. |
| 7. Alabama Gas Corporation Birmingham, Ala. | 17. Libby-Owens-Ford Glass Co. Atlanta, Ga. | 24. American Olean Tile Co. Lansdale, Pa. | 33. Southern Prestressed Concrete, Inc. Montgomery, Ala. |
| 8. Alabama Materials Co. Birmingham, Ala. | | 25. & 26. Southern Sash Supply of Montgomery Montgomery, Ala. | 34. John Scott Photographer Montgomery, Ala. |
| 9. General Equipment Mfgs. Jackson, Miss. | | | |

HONOR AWARDS

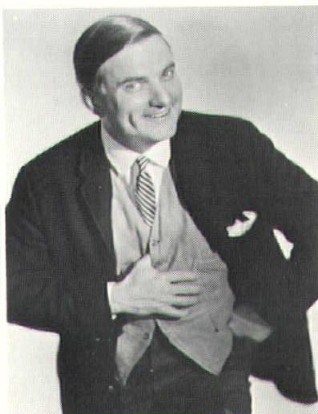
The Alabama Council A.I.A. will present the 1965 Honor Awards for Excellence in Design to winning architects at the banquet on Saturday night, November 6th. This will be the most coveted award that an architect can win in Alabama. The selection of the honorees will be made by a panel of jurors composed of nationally known architects.

It is sincerely hoped that the initiation of this First State Honor Awards Banquet will be the beginning of a program which will become increasingly important to the architects in Alabama, and in the future will become the highlight of the State Convention.

DISCOTHEQUE A GO GO!

On the fun side of the calendar, Friday night, November 5th promises to be filled with excitement and pleasure when the Decorations Committee, under the stellar chairmanship of James D. Masey, assisted by Frank Rosa and Robert Cole, turns the hotel ballroom into a magic world of "Discotheque A Go Go," taking advantage of the newest and gayest theme in the world of entertainment today. The ladies will be in cocktail dresses or short formals, and the men are urged to wear tuxedos for this festive occasion (however dark business suits will be perfectly in order). Members, guests, exhibitors, wives, and participants will have cause to long remember this fabulous night when fun is the keyword and merriment the goal!

HEADLINE ENTERTAINER



SHEAREN ELEBASH

A native Alabamian who has made a secure niche for himself in the nation's entertainment industry, gifted Shearen Elebash has wowed sophisticated audiences the country over. Whether appearing before urbane night club patrons in Miami or over Les Crane's witty TV nighttime show, Shearen Elebash brings humor and beauty in song, recitation and interpretation. An extraordinary experience you'll not want to miss! His performance follows the Honor Awards at the Saturday night banquet.

Schedule of Events for Annual Convention, Alabama Council, American Institute of Architects

November 4, 5, 6, 1965, Montgomery, Alabama
Theme—"Architects: Design Decisions"

THURSDAY, NOVEMBER 4

- 12:00 Noon..... Alabama Council Luncheon and Meeting
- 2:00 p.m..... Set up Exhibits, Davis Room downstairs
- 4:00 p.m..... Set up Honor Awards panels
- 4:00-7:00 p.m..... Commission and Committee meetings (rooms as assigned)
- 7:00 p.m..... Registration in Main Lobby
- 7:30 p.m..... Cocktails, Buffet Dinner and Combo for dancing for Council members and wives, early arrivals, exhibitors and wives. (Cocktails sponsored by Blueprint Service Co.)
- 7:30 p.m..... Auburn Student Seminar, conducted by Edward Durell Stone, FAIA

FRIDAY, NOVEMBER 5

- 8:30-5:00..... Registration at rear of Exhibit area
- 9:30-11:45 a.m..... Annual Meeting and Election of Officers
- 12:00 Noon..... Luncheon, Address by Edward Durell Stone, FAIA
- 1:30 p.m..... Products Exhibits Visits (Prizes awarded each half hour)
- 1:30 p.m..... Honor Awards judging
- 3:00 p.m..... Ladies Tea—Governor's Mansion
- 5:30-6:30 p.m..... Cocktail Party in Exhibit area with Combo (Sponsored by Portland Cement Association)
- 7:30 p.m..... Discotheque A Go Go, Gold Room, Cocktails, Dining. Two orchestras for dancing.

SATURDAY, NOVEMBER 6

- 8:00 a.m..... Breakfast for all attenders, sponsored by Stabler Paint Company, Birmingham
- 9:00-11:45 a.m..... Aesthetic Design Seminar (Architects, Associates, and Students only)
Moderator: Arthur Q. Davis, FAIA
Panelists:
Chloethiel Woodward Smith, FAIA
Richard Snibbe, AIA
Marc Goldstein, AIA
Elliott Carroll, AIA
- 12:00 Noon..... Luncheon for all attenders
Introduction of speaker by Dan Cowling, AIA, Regional Director
Address by Rex Allen, AIA, Vice President American Institute of Architects
- 12:00 Noon..... Ladies Luncheon, Blue Moon Inn
- 1:30-5:00 p.m..... Seminar resumes
- 2:00 p.m..... Ladies Tour
- 6:30 p.m..... Cocktails
- 7:30 p.m..... Honor Awards Banquet
Presentation of Honor Awards
Introduction of New Council Officers
Entertainment by Shearen Elebash
Dancing

MEET THE FACULTY

1965-66 • SCHOOL OF ARCHITECTURE AUBURN UNIVERSITY



William A. Speer

Dean, School of Architecture and the Arts, Auburn University

Born—Hartsville, South Carolina/EDUCATION: B.S. Degree in Architecture, Clemson College—1937/Graduate Work—Cornell University/Aspen Teachers Training Seminar, Aspen, Colorado (ACSA Program for Professors of Architecture)/Master of Architecture, Rensselaer Polytechnic Institute, Troy, New York/PROFESSIONAL STATUS AND EXPERIENCE: Registered Architect in Georgia, South Carolina, and Alabama/Member A.I.A./Member A.C.S.A./Design Award Citation A.I.A. Southeastern Region/Presently member of the Architectural Registration Board for the State of Alabama/Member National Committee for Scholarships, A.I.A./Chairman of Committee on Education and Examination, Southern Region, National Council of Architectural Registration Board (NCARB)/Present President, Alabama Association of the Arts/PRESENT AUBURN UNIVERSITY ASSIGNMENTS: Member, Campus Planning Committee, Auburn University/Chairman: Long Range Planning Committee, Auburn University Faculty Club/EXPERIENCE: 1955 to 1961-62 Professor Architecture, School of Architecture, Clemson College, Clemson, South Carolina—7 years/1953-1955—Established own architects office and entered architectural practice with office in Atlanta, Georgia/1951-1953—Designer—later Plant Manager for the Shaw and Estes Company, Dallas, Texas, designers and manufacturers and contractors of aircraft test equipment/1948-1951—Federal Government architect and project planner for states of Alabama and Mississippi Federal Housing (P.H.A.) Regional Office, Atlanta, Georgia/1946-1948—Civilian Architect and Head of "Plant Design" (Bureau of Aero). Responsible for planning and design layouts for overhaul facilities U. S. Naval Aircraft (New Jet facilities).

William G. McMinn

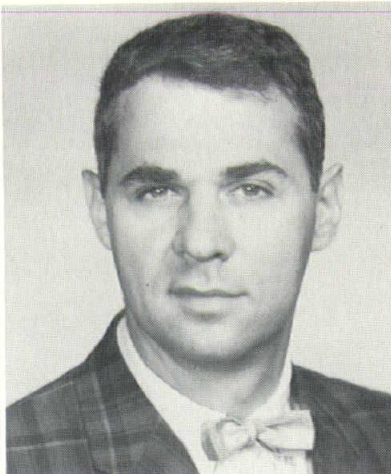
Head, Department of Architecture

Born—August 27, 1931, Abilene, Texas/EDUCATION: Abilene High School/Rice University, Bachelor of Arts & Bachelor of Science in Architecture 1952, 1953/University of Texas, Master of Architecture 1954/PROFESSIONAL REGISTRATION: Licensed to practice architecture in Alabama and Texas; N.C.A.R.B./PROFESSIONAL SOCIETIES: American Institute of Architects/Councilman of the Montgomery Chapter of A.I.A./Alabama Council of Architects/American Collegiate Schools of Architecture / PROFESSIONAL EXPERIENCE: Campus Architect, Texas Technological College/F. C. Olds & Associates, Architects and Engineers/various architectural firms in Texas/TEACHING EXPERIENCE: University of Texas, Graduate Assistant/Clemson University, Professor of Architecture/Texas Technological College, Instructor.



MEET THE FACULTY • 1965-66 • SCHOOL O

(Continued)



Newton Le Vine

Associate Professor, 5th Year Design

Born—June 12, 1929, Albany, New York/
EDUCATION: Philip Schuyler High School/
Champlaine College/University of Penn-
sylvania, Bachelor of Architecture/Univer-
sity of Pennsylvania, Graduate Study in
City Planning/PROFESSIONAL REGISTRA-
TION: Licensed to practice architecture
in New York, New Jersey, and Pennsyl-
vania/PROFESSIONAL SOCIETIES: Amer-
ican Institute of Architects/American So-
ciety of Planning Officials/New Jersey So-
ciety of Architects/Society of Architec-
tural Historians/Philadelphia Regional
Chapter, American Institute of Planners/
New Jersey Federation of Planning Offi-
cials, Technical Adviser/AWARDS: The-
ophilus Parsons Chandler Fellowship/
Samuel Huckel, Jr., Architectural Prize for
PENNSYLVANIA TRIANGLE/PROFESSION-
AL EXPERIENCE: Office of Henry L. Blat-
ner, Architects, Designer/Geddes, Brech-
er, and Qualls, Architects, Designer/Office
of Solomon Kaplan, Architect, Designer/
Vincent G. Kling, Architect, Designer/Mar-
tin, Stewart, Noble, and Class, Architects,
Project Architect/Sacksteder and Le Vine,
Architects/Planners, Partner / Stephen
Sussna Associates, Planning Consultants,
Partner/Alexander Ewing and Associates,
Architects and Engineers, Designer/Wal-
ker and Murray Associates, Planning
Consultants, Urban Designer/Newton Le
Vine, Architect/Planner / WORK PUB-
LISHED: HOUSE AND HOME MAGAZINE,
December, 1964, "What the Leaders are
Building"/TEACHING EXPERIENCE: Lec-
turer, "The Gardens of Japan," History
of Landscape Architecture, University of
Pennsylvania/Guest Lecturer and Jury
Critic, Drexel Institute of Technology.



Ralph K. Morrill

Associate Professor, 4th Year Design

Born—February 24, 1935, Springfield, Mas-
sachusetts / EDUCATION: Mount Herson
School/Massachusetts Institute of Tech-
nology, Bachelor of Architecture/Yale Uni-
versity, Master of Architecture/PROFES-
SIONAL REGISTRATION: Registered archi-
tect in New Hampshire, Vermont and Ala-
bama, and pending N.C.A.R.B., Massachu-
setts Registration, Membership Boston
Society of Architects, AIA/PROFESSIONAL
SOCIETIES: Hanover Artists Association/
New Hampshire Chapter of American In-
stitute of Architects/AWARDS: Peugeot
Competition (Entry selected for permanent
exhibition in Buenos Aires) / PROFES-
SIONAL EXPERIENCE: Charles H. Cole,
Architect, Draftsman/A. T. Granger, Archi-
tect, Job Captain/E. H. & M. K. Hunter,
Architects, Job Captain/ Damuck & Pain-
chaud, Architects, Designer/Job Captain/
Bureau of Standards, Research and Devel-
opment/TEACHING EXPERIENCE: Went-
worth Institute, Instructor.

ARCHITECTURE • AUBURN UNIVERSITY



Adnan Taspinar

Associate Professor Third Year Design

Born—August 3, 1927, Ankara, Turkey/
EDUCATION: Lycee College / Technical
University of Istanbul, M.S. in Architec-
ture and Engineering/University of Penn-
sylvania, M. Architecture/PROFESSIONAL
REGISTRATION: Licensed to practice archi-
tecture in the city of Istanbul and An-
kara, Turkey / PROFESSIONAL EXPERI-
ENCE: Amac Construction Company, Proj-
ect Architect/Workers Insurance Institu-
tion Project, Supervisor Architecture/
Maurice Fletcher Architectural Firm, Phil-
adelphia/O. L. Fallon, Architectural Firm,
Philadelphia/WORK PUBLISHED: Airport
Terminal Building (Turkish) (Book 160
pages)/TEACHING EXPERIENCE: Middle
East Technical University, Assistant Pro-
fessor, seven years.



Nicholas D. Davis

Assistant Professor Teaching 3rd Year

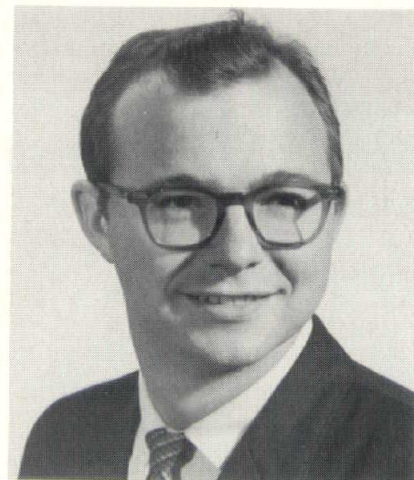
Born—June 9, 1930, Memphis, Tennessee/
EDUCATION: Rice University, B.A. & M.S.
in Architecture/Princeton University, M.
in Architecture / PROFESSIONAL REGIS-
TRATION: Licensed to practice architec-
ture in the state of Mississippi/PROFES-
SIONAL SOCIETIES: Mississippi Chapter
American Institute of Architects/AWARDS:
William Ward Watkin Traveling Fellow-
ship/PROFESSIONAL EXPERIENCE: Over-
street, Ware, and Ward, Designer/ Biggs,
Weir, and Chadler, Designer/Jay T. Liddle,
Architect / TEACHING EXPERIENCE: Au-
burn University, three years.



Edward E. Pickard

Assistant Professor Second Year Design

Born—October 8, 1928, Ocean Springs,
Mississippi/EDUCATION: McNeese Junior
College of L.S.U./Louisiana State Univer-
sity, Bachelor of Music Education/Georgia
Institute of Technology, Bachelor of
Science, Bachelor of Architecture/Atlanta
Art Institute/PROFESSIONAL REGISTRA-
TION: Licensed to practice in Mississippi
and Georgia; N.C.A.R.B. certificate/PRO-
FESSIONAL SOCIETIES: American Insti-
tute of Architects/AWARDS: Phi Mu Alpha
Sinfonia / PROFESSIONAL EXPERIENCE:
Locatelli, Inc., Architects and Engineers,
Architect in training/Stevens & Wilkinson,
Architects, Architect in training/Fountain
& Pickard, Architects, Partner/TEACHING
EXPERIENCE: Biloxi Separate School Sys-
tem, Teacher—night school.



Terry M. Turner

Assistant Professor Second Year Design

Born—April 5, 1938, Bastrop, Louisiana/
EDUCATION: Memphis State University,
Bachelor of Administration / Washington
University, B.S. in Architectural Science,
B. in Architecture/PROFESSIONAL REG-
ISTRATION: Licensed to practice architec-
ture in Louisiana/PROFESSIONAL SO-
CITIES: American Institute of Architects/
AWARDS: Missouri Association of Regis-
tered Architects Award/PROFESSIONAL
EXPERIENCE: Famous and Barr, Store
Planning Dept./Drake-O'Meara and Asso-
ciates, Drawing and Planning/DeFraithe
and Associates, Drawing and Planning.

THE ALABAMA COUNCIL AND CHAPTERS



Edward J. Bondurant
President
Birmingham Chapter



James F. Dietz
President
Mobile Chapter



Parker Narrows
President
Montgomery Chapter

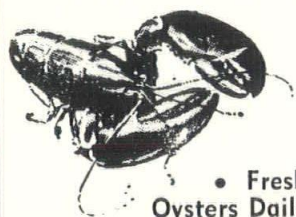


A. Jackson Davis
President
North Alabama Chapter

Elite Cafe

DOWNTOWN
MONTGOMERY
54 YEARS

and
CASINO LOUNGE



• Fresh
Oysters Daily

- Live Maine Lobster
- Shrimp Athenian
- Stuffed Flounder
- Trout Amondine
- Split Tenderloin of Beef
(Mediterranean Style)

The Council and Chapters are concerned with the following areas of activity:

1. The professional society, membership, organization and ethics.
2. Education and research, academic training and research in architecture.
3. Professional practice, relations with engineers, and liaison with the building industry.
4. Architectural design, aesthetics, relations with collaborating arts; design of institutional, commercial and governmental buildings, and residential architecture.
5. Public relations, exhibitions and preservation of historic buildings.

In addition, there are other committees concerned with special scholarship funds, a committee on legal affairs and the Architectural Foundation.



THE NEW JEFFERSON DAVIS

MONTGOMERY, ALABAMA

H. O. DAVIS & TINE W. DAVIS, Owners

GEORGE F. FOWLER, Manager

For the best food
in Dixie

THE URBAN ROOM

Serving from 6:30 A.M.

FREE GUEST PARKING

Two New Floors of Banquet and
Function Rooms. Combined Ca-
pacities 2000 for Meetings,
1500 for Banquets.

COMPLETE CATERING SERVICE

Entertainment
nightly in the

SURF RIDER LOUNGE

Open 11 A.M.-2 A.M.

PURPOSE OF "ALABAMA ARCHITECT"

The purpose for the publication of Alabama Architect under the auspices of the Alabama Council of the American Institute of Architects is to advance the profession of architecture within our area of effectiveness.

Within the profession this purpose is served by presenting material which will assist the architect to: ■ improve the quality of his design; ■ increase his technical competence; ■ strengthen his business management procedures; ■ fulfill his obligations to his community; ■ increase his awareness of matters of professional concern.

Outside of the profession this purpose is served by presenting material which will improve the climate in which architecture is practiced by: ■ explaining the role of the architect; ■ informing the public of the architect's position in civic affairs and on matters affecting public health and welfare.

concrete progress...

cement manufacturers work so many ways to make it happen

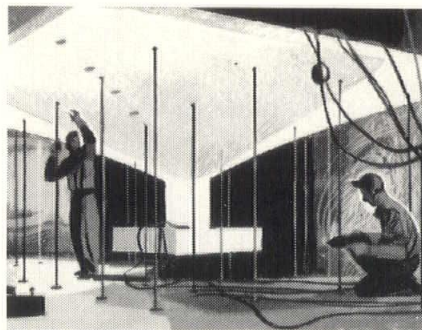
MATCHING CONCRETE'S TALENTS TO THE ARCHITECT'S CREATIVENESS

Today's unique concrete shell roofs evidence dramatically how concrete is capturing the imagination of architects—and for that matter, of professionals in every field of construction. □ Yet, the growing appeal of concrete is no mere happenstance. It has been developed by broadening the versatility of concrete, by enabling builders to exploit its limitless potential—by literally “making progress happen.” □ Major responsibility for this development was taken on years ago in the U.S. and Canada by the manufacturers of portland cement. While competing for sales, they cooperate for progress. Through their Portland Cement Association, they sponsor a development program beyond the resources of any of them individually. □ Research, basic and applied, conducted in a 10-million-dollar laboratory complex, has enabled concrete to meet the needs of a new era. □ In the continuously changing technology of construction in every field, concrete users

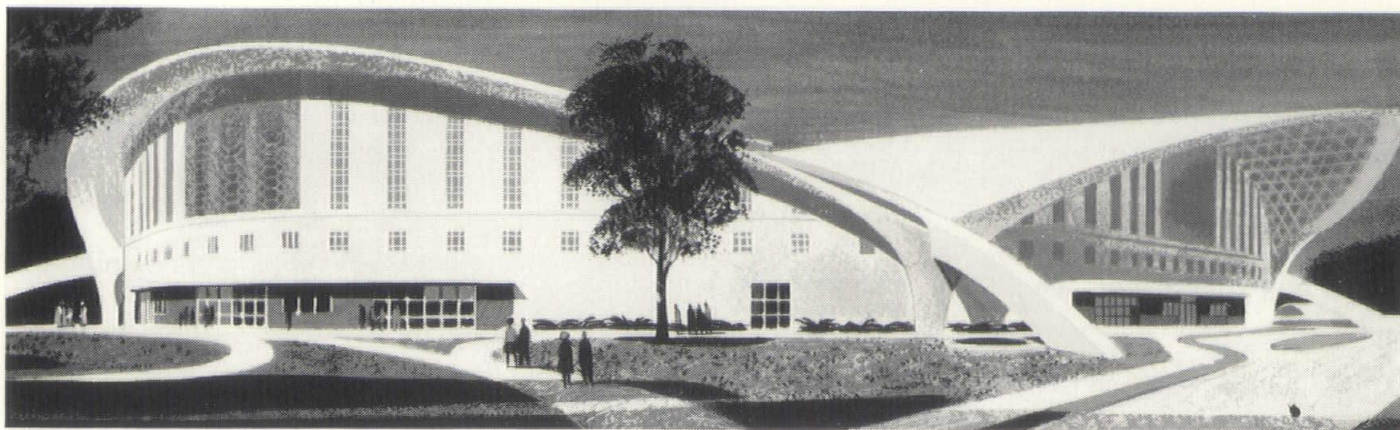
depend on the continuing flow of engineering and technical literature provided—as well as the services of a specialist staff, including 375 field engineers working out of 38 district offices. □ These services are among the many provided by cement manufacturers, without charge, to users of concrete. They benefit everyone in some way every day at work, at home, on the highway.

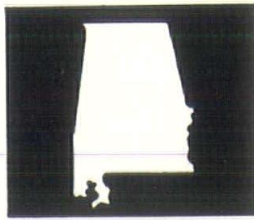
PORTLAND CEMENT ASSOCIATION
33 West Grand Ave., Chicago Ill. 60610

An organization to improve and extend the uses of portland cement and concrete



TESTING A NEW TWIST IN CONCRETE. Engineers at PCA Laboratories subject a concrete shell to 10½ tons of load. Findings help architects and construction engineers to broaden their uses of concrete in fresh, bold ways.





*Serving the
Architects and
Builders of
the State*

**ALABAMA
INDUSTRIES CONCRETE
ASSOCIATION**

ACIA

P. O. BOX 4157
401 BELL BUILDING
MONTGOMERY, ALABAMA

*Building for Permanence
with Concrete Products*

MOBILE CHAPTER HOSTS COUNCIL

The Mobile Chapter A.I.A. provided the touch of hospitality for which the Port City is famous when members served as hosts for the third quarterly meeting of the Alabama Council A.I.A. Joining the Chapter at its luncheon on Friday, July 23rd, Council members later spent the afternoon and evening in official business.



Saturday morning, arrangements had been made for a large sailboat to take a cruise for non-landlubbers. Included among those sailing were (see photo, l. to r.) Ed Bondurant, Stephanie Ellis, Wesley Ellis, Mrs. Hugh Ellis, Hugh Ellis, and Annette Ellis. All hands reported an enjoyable sailing day.

Imaginative Architecture

*with glued laminated structural
members by Timber Structures, Inc.*

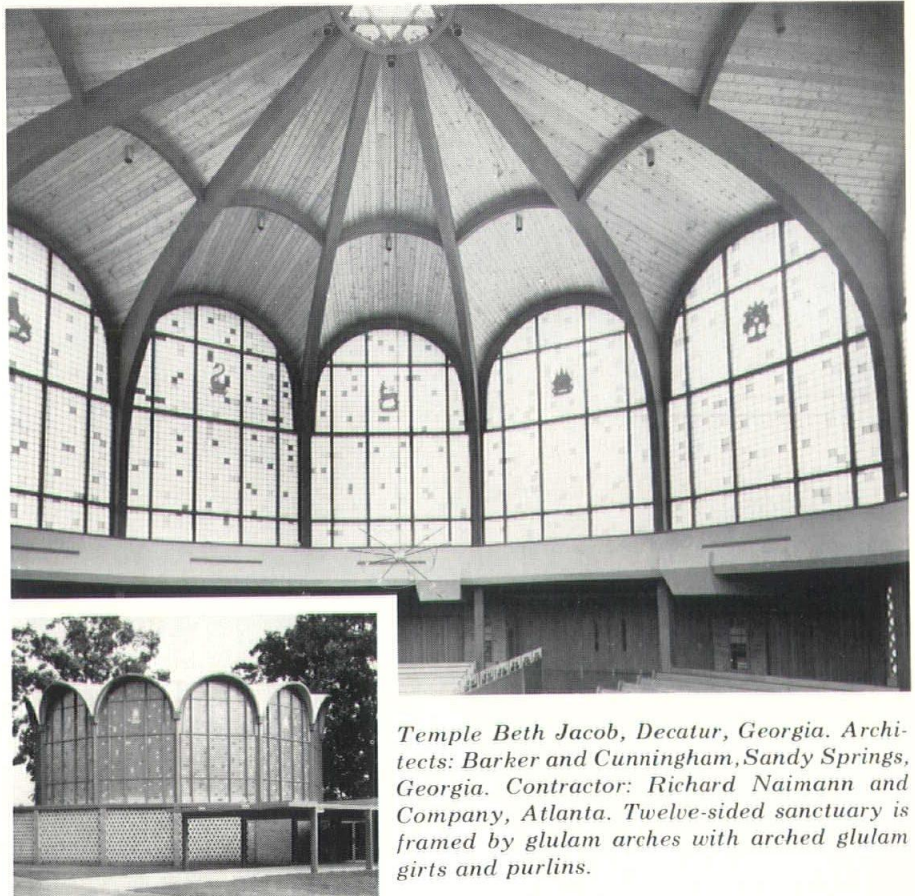
Formed to virtually any desired shape, glued laminated structural members by Timber Structures, Inc. free the architect's imagination from restrictions of less adaptable materials, and reward his efforts with the unaffected natural beauty of fine wood artistically used.

Structural timbers of Timber Structures, Inc. are produced at Greenville, Alabama. Here complete facilities provide prompt service for Southeastern construction. Strict quality control enables us to assume responsibility for the performance of our products in your buildings. The timbers make good, or we do!

For information, see our catalog in Sweet's, or ask us for the informative brochure, "Engineering in Wood".

TIMBER STRUCTURES, INC.

P.O. Box 250, Greenville, Alabama
Telephone (205) 382-3191



Temple Beth Jacob, Decatur, Georgia. Architects: Barker and Cunningham, Sandy Springs, Georgia. Contractor: Richard Naimann and Company, Atlanta. Twelve-sided sanctuary is framed by glulam arches with arched glulam girts and purlins.



Architecture—Art and Science

Architecture not only reflects, it determines civilization

Architecture is the art and science of building.

As a science, architecture must provide shelter and comfort for human activities in the most practical and efficient manner. As an art it must, at the same time, express the spirit, the sense of beauty, and the aspirations of the people who live, work, play, and worship in it.

Architecture, as a noted historian once said, reveals the real nature of people, whether original in concept or patterned after the past. Just as the Egyptian pyramids and the Gothic cathedrals did in their time, architecture today presents a visible, enduring expression of civilization.

Architecture not only reflects—it also determines civilization.

A well-designed, efficient, and beautiful home provides better living for the family that lives in it. A good commercial building improves the business which is conducted in it. A well-designed church enhances worship. The planning of schools, hospitals, warehouses, hotels, science laboratories, airports, or supermarkets can help or hinder the activities for which they are intended. Architecture is a house, a school, a bank, a plaza, a vast urban redevelopment project, the face of a nation.

Architecture deals not only with steel and stone, brick and glass. It deals with the movement of people, the flow of traffic—with every civilizational requirement of man. It has the power to protect, to channel, and to encourage or discourage activity. Sometimes, it has the power to awe.

Alabama's largest!

Over \$400,000,000 in Mortgage Loans!

Specialists in long-term financing on income properties

- Apartments • Commercial Buildings • Medical or Dental Clinics
- Shopping Centers • Warehouses • Offices • Nursing Homes

COBBS, ALLEN & HALL

MORTGAGE COMPANY, INC.

- BIRMINGHAM Phone 323-4481
- HUNTSVILLE Phone JE 9-3701
- MONTGOMERY Phone 265-9556
- MOBILE Phone GR 1-1526
- DECATUR Phone EL 5-1441
- PENSACOLA Phone 433-6569



DISTRIBUTORS

ARMSTRONG FLOORS

MOHAWK CARPETS

The right floor covering for any job

Let our trained personnel assist with your specifications

Birmingham
501 So. 12th St.
Phone 323-1694

Montgomery
704 No. Perry St.
Phone 262-6676

ESTABLISHED 1903

Robert Jemison, Jr., President



Business and Commercial Leases
Industrial Properties
Property Management
Mortgage Loans • Appraisals
Developers • Sales

Jemison Realty Company

2105 3rd Ave., N. / 251-5141
Birmingham

HALLMARK & BROWDER
ELECTRICAL & MECHANICAL
ENGINEERS

139 Lee St. Tel. 265-5555
Montgomery, Alabama

Registered Professional Consultants
Alabama, Florida, Georgia, Mississippi

Since 1887 . . .

HANNA PAINTS

- Hi-fashion decorator colors
- Exterior house colors
- Enamels and stains
- Industrial and machinery finishes
- Commercial and contractor finishes
- Marine and farm finishes
- Special made to order finishes

See your dealer or

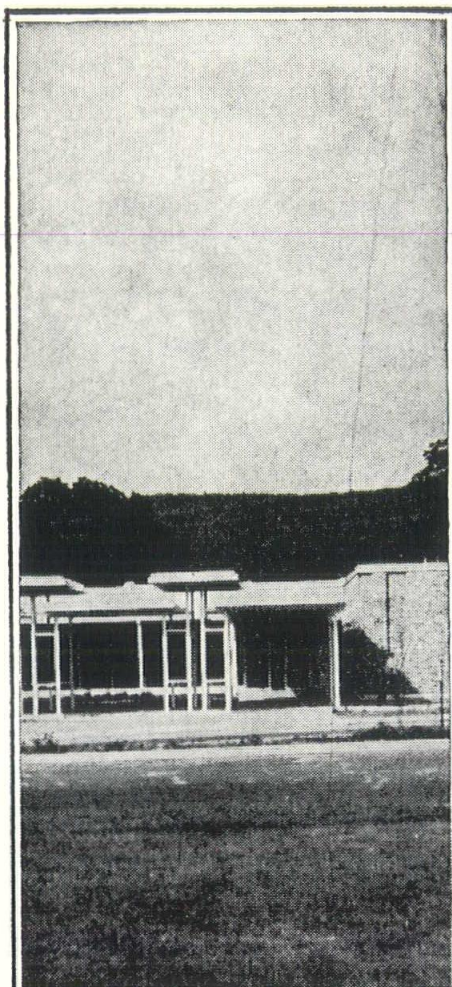
HANNA PAINT CO.

Phone 323-5201
1018 Fifth Ave. So.
Birmingham, Ala. 35205



CHAPTER NEWS

• AROUND THE STATE •



where is it? huntsville, alabama

This modern, functional and efficient medical clinic is but one example of the forward thinking at Realty Mortgage Company. To handle any mortgage need our branches are conveniently located at: 121 West Alabama Street, Florence; 2700 Memorial Parkway, Huntsville; 145 Molton Street, Montgomery; and 2100 Government Street, Mobile. Main Office: Bank for Savings Bldg., Birmingham, Ala.

We serve all Alabama and concentrate on giving the best in mortgage lending service.



realty mortgage company

**VA—FHA—CONVENTIONAL AND
COMMERCIAL LOANS**

BIRMINGHAM CHAPTER—The program at the September meeting included the showing of the Institute's film *NO TIME FOR UGLINESS*, produced and distributed by the National AIA as a major weapon for the War on Community Ugliness. In other activities, Birmingham Chapter president Edward Bondurant headed up a statewide committee for the Honor Awards program which will be culminated at the State Convention.

MOBILE CHAPTER—This Chapter is also busy on the Honor Awards program for the State Convention, and was the first to initiate its own Honor Awards this year on a Chapter basis. Mobile has viewed the AIA movie *NO TIME FOR UGLINESS*, and can take pride in the fact that through their efforts they have made a sound contribution to the Port City's community program such as the Historic Preservation emphasis, among other activities.

MONTGOMERY CHAPTER—The Capitol City Chapter, at its September meeting, invited the Mayor, Chamber of Commerce representatives, and Downtown Business Association executives to join them in reviewing the Institute film *NO TIME FOR UGLINESS*. All came, and were much impressed, indicating the value that the movie has. The Chapter has a committee working on a survey and listing of buildings of historic significance. Also a committee has been appointed to take photographs for use in a booklet, showing 50 photos of bad as well as good features around the city. Main project recently has been the work on the State Convention, which comes to fruition on November 4-5-6th.

NORTH ALABAMA CHAPTER—This active group has had a successful summer working with the Director of Planning of the City Planning Commission and the summer class from the School of Architecture at Auburn. The class came to Huntsville on a weekend and spent some time out in the country. At the mid quarter point, the director, Lloyd Kranert, Thomas Jones, and Dick Dickson spent a day going over the problems with the students and later had a jury session on final problems. A number of people are working on the "War on Ugliness" project and president A. Jackson Davis hopes to get it kicked off in the fall with a big public meeting.

NEW MEMBERS AND CHANGE OF STATUS

CORPORATE MEMBERS—Sherrod Barr Hixon (from Professional Associate), 2201 Arlington Ave., S., Birmingham—Walter Carlos Anderton (from Professional Associate), 11 Glen Iris Park, Birmingham—Durwood J. Golden, 2336 Farley Place, Birmingham—Marion Larrimore Bradford, 2316 4th Avenue, North, Birmingham—Charles P. McCleskey (from Professional Associate), 614 First National Bank Building, Mobile—Bertholde Bracken McElroy, 12 Princess Ann, Mobile—Lawrence Alexander, Jr., 3400 Wilmington Rd., Montgomery—(current address P. O. Box 606, Niceville, Fla.)

PROFESSIONAL ASSOCIATE MEMBER: Harold L. Kincaid, 300 Canover Drive, Birmingham

NEW ASSOCIATE MEMBERS: Charles J. Snook III, 3813 Buckingham Lane, Mountain Brook (Birmingham)—Walter Joseph Crane, 655 Merritt Drive, Mobile—William Frank Laraway, 6 Laraway Lane, Fairhope—Jack W. Malone, 630 Austin Drive, N.W., Huntsville—William Lawrence, Jr., 1600 Red Oak Road, S.E., Huntsville.

Henry W. Tyree, Professional Associate and member of Barr & Tune, Florence and Huntsville, has been granted Registration as a Professional Engineer, in addition to his Professional Registration as an Architect.

Thank You Mr. Architect for Your Specifications!

NOW, STICK WITH THEM!!

COOKE ASSOCIATES

For the finest in finishes...

always specify...

Staco Paint products — architectural paints, enamels, varnishes and stains — are manufactured in Alabama to meet exacting quality requirements of the most discriminating architects, owners and contractors.

Per gallon price is usually no higher than that of some other brands often specified. Yet, Staco offers many extra advantages. Having the factory located near the job means less transportation costs involved... prompt availability of technical assistance... superior delivery service.

Savings possible through these lowered selling and servicing costs in addition to manufacturing efficiency are reflected in generous use of more expensive ingredients in our product. And that means pleasing and more completely satisfying results in your finished job.

When specifying, consider Staco Paint products — the name to merit your confidence. We're ready, willing and anxious to furnish information or assistance to you. Just telephone (205) 592-8958 (collect) and ask for: L. Vastine Stabler, L. C. Burks, Philip H. Boyd, Claude F. Kersh, Bill Hathcox, E. E. "Buddy" Strickland or Emery M. Lowry.



STABLER PAINT MFG. CO.
INCORPORATED

3827 First Avenue North / Birmingham, Alabama 35222

for properly designed buildings, it's essential to consult a professional architect . . .

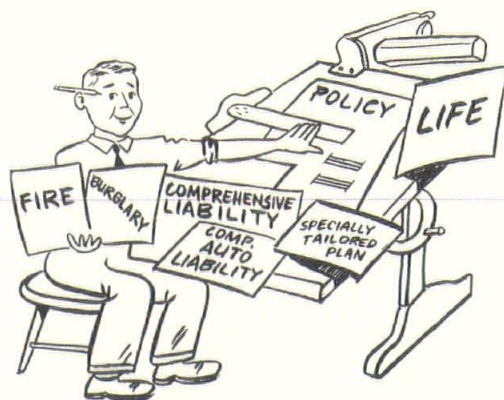
for properly designed insurance coverage, it's important to consult a professional insurance agent . . .

Those representing the



are professionals. Let one of them design your insurance program with

ONE POLICY
ONE PREMIUM
ONE AGENT



The South's Leading General Agency
in Insurance Research and
Development

W. J. PERRYMAN
AND COMPANY, INC.

NEW OFFICE
2900 Cahaba Road, Mountain Brook
BIRMINGHAM



T. R. Miller High School
Brewton, Ala.
designed by
Pearson, Tittle & Narrows, Architects
Montgomery, Ala.

- EXTERIORS
- INTERIORS
- AERIAL
- BLACK & WHITE
- COLOR

ARCHITECTURAL PHOTOGRAPHY

Many photos published in architectural forum & other publications

Paul Robertson

935 South Court Street • Montgomery, Ala.
Phone 263-0413

► Special attention to work anywhere in the State

LETTERS

Sir:

Please accept my personal compliments, as well as those of the Mobile Historic Development Commission, on the July-August 1965 issue of ALABAMA ARCHITECT.

Those of us interested in historic preservation feel very proud of what has been accomplished in Mobile in the past few years and interested members of the architectural profession have led the way. It is certainly a fine thing when a widely-circulated publication such as the ALABAMA ARCHITECT recognizes our aims and accomplishments.

NANCY N. HOLMES
(Mrs. Nicholas H. Jr.)
President
Mobile Historic Development
Commission

Sir:

On behalf of the membership of the Alabama Concrete Industries Association, I would like to add our congratulations to you on the publishing of the ALABAMA ARCHITECT. It is a very concise and informative magazine and I am sure it will serve the architects of the State of Alabama well.

We look forward to a continuing close working relationship between our two associations as vital parts of the growing construction industry of the State of Alabama.

J. C. STALLINGS, JR.
President
Alabama Concrete Industries
Association

Mr. Norman Grider:

May I congratulate you on the article you wrote for the July-August issue of ALABAMA ARCHITECT. Your perception is as refreshing as it is keen and an encouragement to one who is weary of explaining that imitation is disparagement and copywork sterile.

I hope you will take a more active part in Mobile's preservation to help guard it against the predators who mine it for the materials for their surrogates.

ARCH WINTER

To The Editor:

It is certainly heartening to find a young architect understanding and expressing himself for the principles of evolution in style and creativeness in design. Sometimes, in the midst of imitation of historic architecture and copying of modern, you wonder if anyone has taken the trouble to tell the young men coming into architecture that it is a creative art. Grider, at least, seems to have gotten the word.

ARCH WINTER

OF HISTORIC INTEREST . . .

John A. Wetzel, Charter Member
of Alabama Chapter A.I.A.



JOHN A. WETZEL

John A. Wetzel received his B.S. in Architecture from the University of Pennsylvania, became a member of A.I.A. in 1913 while located in Mobile, and entered private practice in 1914. He was affiliated with Robert and Company, Atlanta, and later with Sherlock, Smith & Adams of Montgomery. Registered in Alabama and Georgia, he resides now in Foley, Alabama, and is a Member Emeritus of the Mobile Chapter AIA.

NEXT YEAR—BIRMINGHAM! FOR THE FIFTIETH ANNIVERSARY

In 1966, the Birmingham Chapter of the American Institute of Architects will host not only the annual AIA State Convention, but the 50th Anniversary of the AIA in Alabama. Founded in the Magic City July 6, 1916 as a State Chapter by ten men, the organization has grown to its present stature today numbering nearly 300 members around the state. Plans are already underway to make this a real high-point in architectural activity for Alabama.

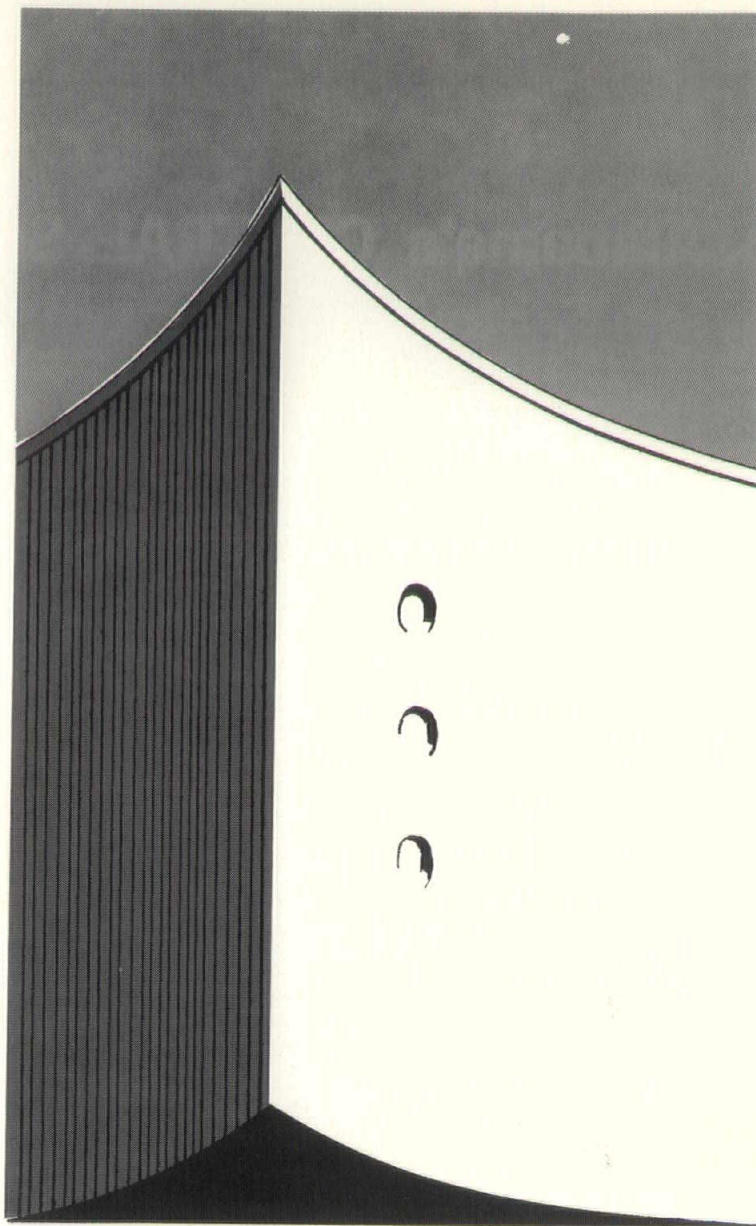
GULF STATES REGIONAL COUNCIL MEETS

A full complement of Alabama representatives attended the one-day meeting of the Gulf States Regional Council Executive Committee at the Royal Orleans Hotel on September 18th, 1965. Arriving in the storm battered city a bare week after Hurricane Betsy, the architects from the five-state region (Alabama, Arkansas, Louisiana, Mississippi and Tennessee) spent a fruitful day going over important business. Among items of significance, it was noted that architects last year received \$1.95 in services from each \$1 in dues paid to the Institute; that the R. R. Bowker Co. will soon publish a national Directory of American Architects, which each Chapter should have (cost: \$15); that the Institute is making a series of 9 to 12 movies for secondary schools, the first one being underway on Ancient Egypt, Syria, etc. (first because of imminent flooding of many early examples); and that a foundation was being sought to underwrite these films.

In other news it was noted that the next Regional Conference will be in Hot Springs, Ark. on April 13-15, 1966, and that the National AIA Convention will be in Denver beginning June 26, 1966.

Dan Cowling, regional director, presided over a full contingent, including from Alabama Hugh Ellis, Ed Bondurant, Parker Narrows, Fred Dietz, A. Jackson Davis, and Jay Leavell.

September-October 1965



Design in total energy with NATURAL GAS

GAS does it all! Dependable natural gas supplies every single energy requirement, including cooling and heating . . . cooking and water heating . . . even lighting!

Gas is the completely flexible energy source that complements your plans . . . simplifies execution . . . is most economical . . . is so adaptable to even the most imaginative applications—*Industrial or Residential.*

ALABAMA GAS
CORPORATION

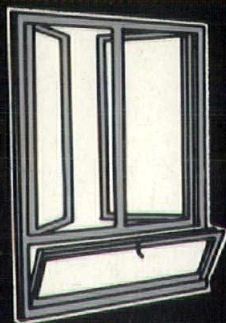
THE ALABAMA ARCHITECT
Suite 501—Guaranty Savings Bldg.
P. O. Box 267—Montgomery, Ala.

BULK RATE
U. S. POSTAGE
PAID
BIRMINGHAM, ALA.
PERMIT No. 286

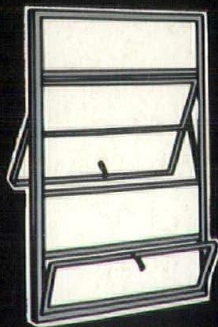
Alabama's **CENTRAL** Source
for Technical Information
and Distribution of

Aluminum Windows

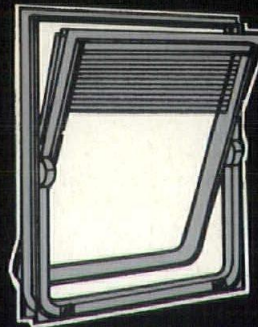
Representing the Nation's **MAJOR MANUFACTURERS** of
ALUMINUM AND STEEL WINDOWS



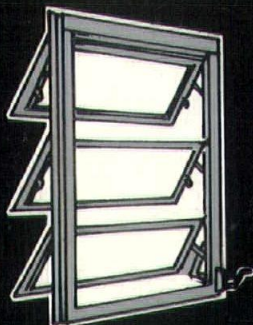
COMBINATION
CASEMENT



PROJECTED



THERMAL CONTROL



AWNING



DOUBLE HUNG

**Also a Complete Line of CURTAIN WALL &
Complete Line of BUILDING SPECIALTIES**

Modernfold Folding Doors
Hotpoint Built-In Appliances
Nutone Built-In Equipment
Kwik-Set Hardware
Amweld Hollow Metal

Majestic Fireplace Grills
Kitchen-Aid Dishwashers
Sun Control Grills
Kane Detention Screens
Nord Wood Doors & Columns



Southern Sash
SUPPLY OF MONTGOMERY, INC.

506 No. Court • P. O. Box 446 • Phone 265-3521 • Montgomery, Ala.