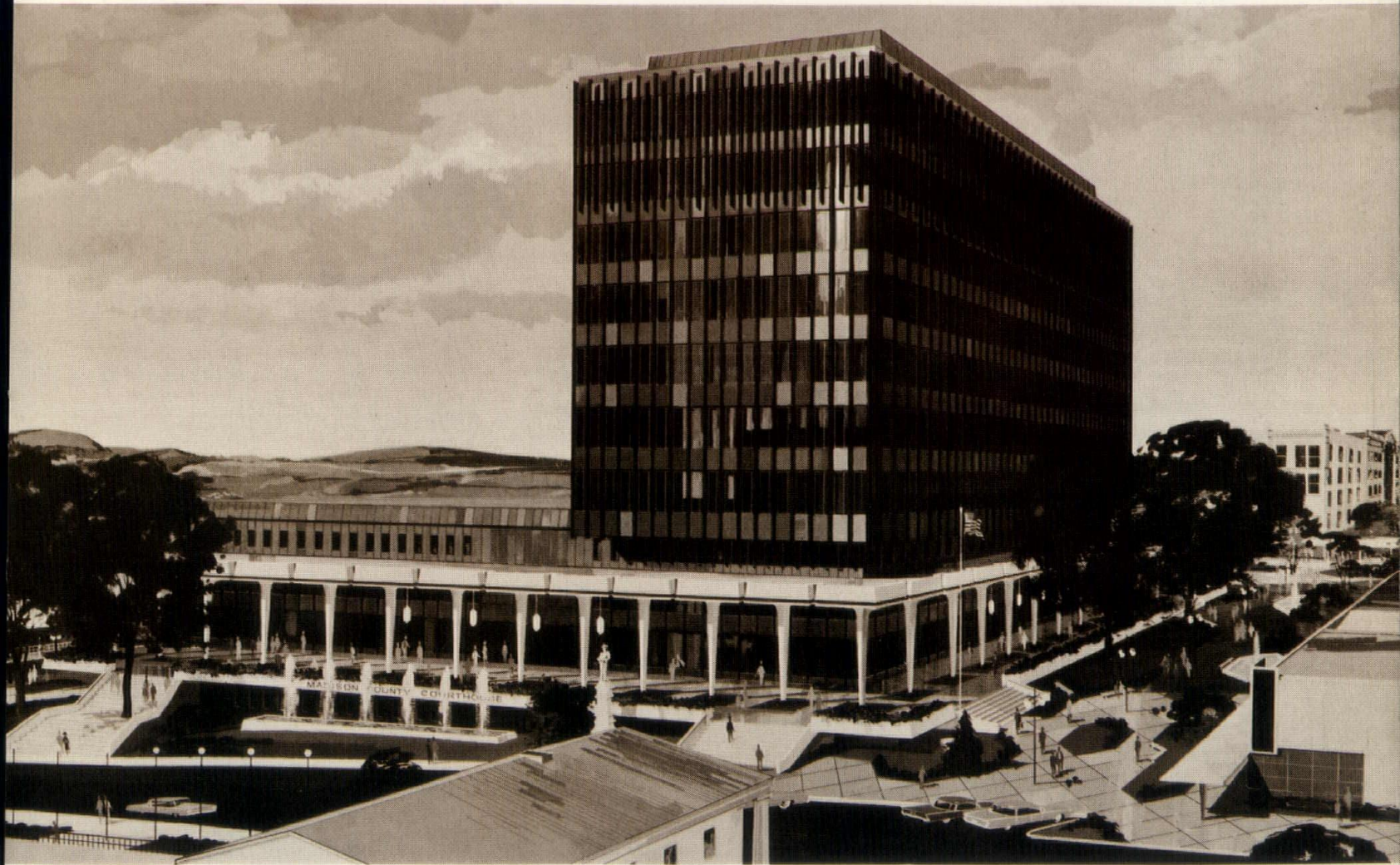


ALABAMA ARCHITECT

OFFICIAL PUBLICATION OF THE ALABAMA COUNCIL
OF THE AMERICAN INSTITUTE OF ARCHITECTS

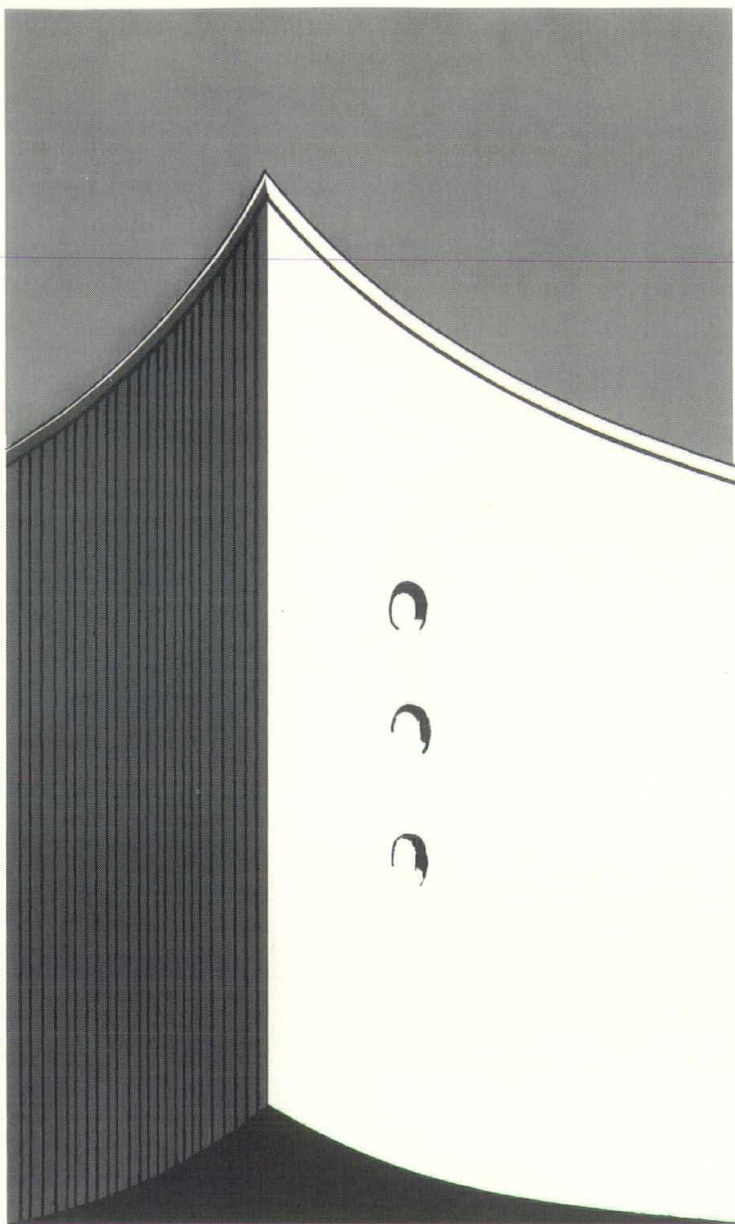
MAY - JUNE 1965



NEW COURTHOUSE
RISES ABOVE CAVERNS

HUNTSVILLE'S "CENTER CITY"

THE EVOLUTION OF
A MASTER PLAN



*Serving the
Architects and
Builders of
the State*

ALABAMA CONCRETE INDUSTRIES ASSOCIATION

ACIA

P. O. BOX 4157
401 BELL BUILDING
MONTGOMERY, ALABAMA

*Building for Permanence
with Concrete Products*

PURPOSE OF "ALABAMA ARCHITECT"

The purpose for the publication of Alabama Architect under the auspices of the Alabama Council of the American Institute of Architects is to advance the profession of architecture within our area of effectiveness. Within the profession this purpose is served by presenting material which will assist the architect to: ■ improve the quality of his design; ■ increase his technical competence; ■ strengthen his business management procedures; ■ fulfill his obligations to his community; ■ increase his awareness of matters of professional concern. Outside of the profession this purpose is served by presenting material which will improve the climate in which architecture is practiced by: ■ explaining the role of the architect; ■ informing the public of the architect's position in civic affairs and on matters affecting public health and welfare.

Design in total energy with NATURAL GAS

GAS does it all! Dependable natural gas supplies every single energy requirement, including cooling and heating . . . cooking and water heating . . . even lighting!

Gas is the completely flexible energy source that complements your plans . . . simplifies execution . . . is most economical . . . is so adaptable to even the most imaginative applications—*Industrial or Residential.*

ALABAMA GAS
CORPORATION

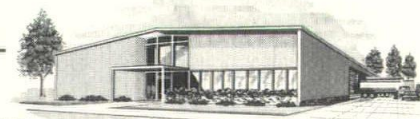
Stran-Steel

FRANCHISED BUILDER

J. W. WASH CONSTRUCTION CO.

2317 BOB WALLACE AVE., S/W
HUNTSVILLE, ALABAMA

STRAN-STEEL
BUILDINGS
FOR EVERY USE



PRESIDENT'S MESSAGE



Secretary of the Interior Stewart L. Udall, commenting on an article in the April *READER'S DIGEST* entitled "America Down The Drain," stated in part "... We will lose the big fight to save our cities and country-side unless enough people get involved—and stay involved."

This is where the architect comes in.

It is the responsibility of each Chapter of AIA, and of each individual architect, to arouse the opinion of the decision makers in his own community.

Alabama is proud of the recent citation awarded Arch Winter, one of our own AIA members, for his work in connection with the "Citation for Excellence in Community Architecture" recently awarded to the City of Shreveport, Louisiana.

The architects of Birmingham and of Huntsville have made a significant breakthrough and are moving creatively and positively toward definite action in their own communities. At the same time, Mobile architects are pursuing a vigorous program related to the port city, and Montgomery AIA members are taking strong steps in Urban Renewal and other programs.

Led by the president of our National Institute and armed with the "Weapons for the War on Community Ugliness," let us accept the challenge!

HUGH W. ELLIS
President
Alabama Council AIA

ALABAMA ARCHITECT



OFFICIAL PUBLICATION OF THE ALABAMA COUNCIL
OF THE AMERICAN INSTITUTE OF ARCHITECTS

MAY - JUNE 1965

IN THIS ISSUE . . .

<i>PRESIDENT'S MESSAGE</i>	Page 3
<i>PLANNING AND ARCHITECTURE IN THE "ROCKET CITY"</i>	Page 5
<i>LETTERS TO EDITOR</i>	Page 11
<i>CHAPTER NEWS</i>	Page 12
<i>NEW PRODUCTS AND SERVICES</i>	Page 14

ALABAMA COUNCIL, AIA OFFICERS AND COUNCILORS—1965

OFFICERS

President	Hugh W. Ellis	220 South 8th Street	Gadsden, Alabama
Vice President	Edward B. Baumhauer	1157 Springhill Avenue	Mobile, Alabama
Secretary	Donald L. Horton	1415 Adrian Lane	Montgomery, Alabama
Treasurer	Paul M. Speake	3004 7th Avenue, South	Birmingham, Alabama
Executive Secretary	Jay Leavell	P. O. Box 267	Montgomery, Alabama

COUNCILORS

BIRMINGHAM—	Edward J. Bondurant, President, Birmingham Chapter AIA Bill Williams, Position No. 1 Bill Chambers, Position No. 2
MOBILE—	J. Frederick Dietz, President, Mobile Chapter AIA C. Dewey Crowder, Councilor
MONTGOMERY—	Parker Narrows, President, Montgomery Chapter AIA Joseph L. Donofro, Position No. 1 William G. McMinn, Position No. 2
NORTH ALABAMA—	A. Jackson Davis, President, North Alabama Chapter AIA

EDITORIAL STAFF—

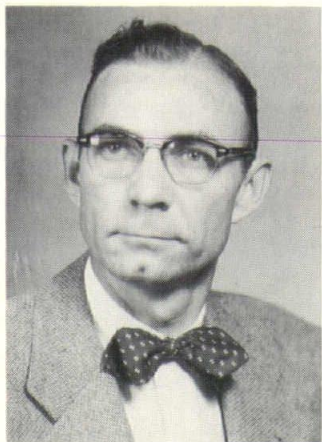
Jay Leavell, Managing Editor, P. O. Box 267, Montgomery, Ala.
Associate Editors:
Birmingham: Don Morrison, 701 South 37th Street, Birmingham
Mobile: John A. McArthur, Jr., 305 Glenwood Street, Mobile
Montgomery: Donald A. Fletcher, 303 Washington Ave., Montgomery
North Alabama: Joe Milberger, 100½ Jefferson St., S.W., Huntsville

Alabama Architect, Official Publication of the Alabama Council of the American Institute of Architects, is owned and published by the Council, an Alabama Corporation not for profit. It is published bi-monthly at the Executive Office of the Council, 501 Guaranty Savings Building, Montgomery, Alabama; telephone 264-4471 (area code 205).

Editorial contributions, including plans and photographs of architect's work, are welcomed but publication cannot be guaranteed. Unsolicited works should be accompanied by sufficient return postage. Opinions expressed by contributors are not necessarily those of the Editor or the Alabama Council, AIA. Editorial material may be freely reprinted by other official AIA publications, provided full credit is given to the author and to ALABAMA ARCHITECT for prior use.

Advertisements of products, materials and services adaptable for use in Alabama are welcome, but mention of names or use of illustrations of such materials and products in either editorial or advertising columns does not constitute endorsement by the Alabama Council, AIA. Advertising material must conform to standards set by this publication; and the right is reserved to reject such material because of arrangement, copy or illustration. Available at a subscription cost of \$3.00 per year. Single copies 50 cents. Roster issue \$2.00.
Printed by Birmingham Printing Company.

CHAPTER PRESIDENT SPEAKS



A. JACKSON DAVIS
President
North Alabama Chapter, AIA

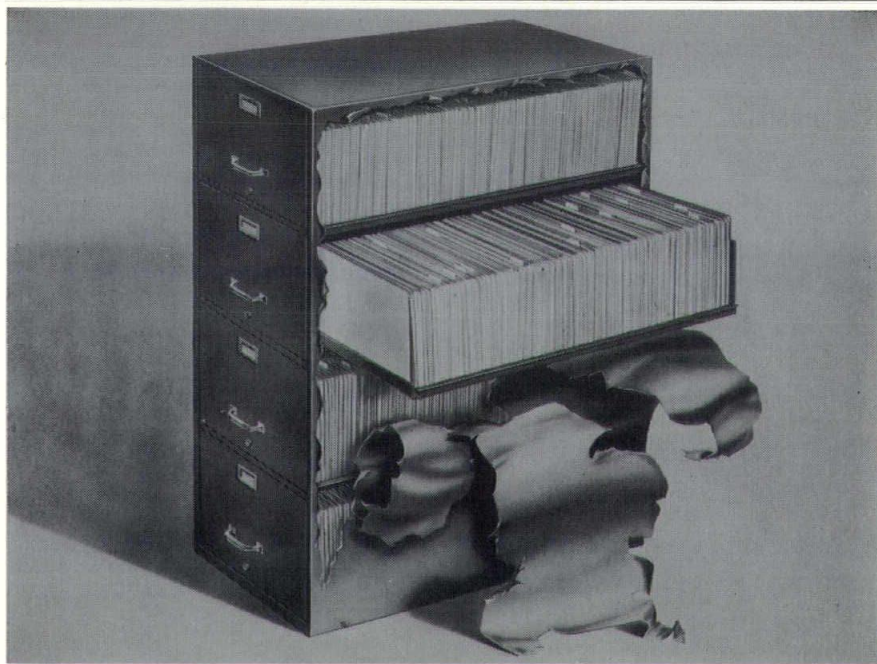
The Architectural profession in North Alabama has made tremendous progress during the past year.

The rapid growth has generated new strength in many forms to enhance the professional, civic, and cultural life of our communities. To meet the demands of this growth, the architects in North Alabama were chartered in January, 1965 as a full fledged chapter of the American Institute of Architects. This organization has molded the individual architects into a cohesive group with ambition, purpose, and the talents to achieve goals that could not otherwise be accomplished.

Chapter members have become involved in numerous projects in an effort to meet the many challenges that face our communities today. Committees have been active in all phases of organizing cooperative efforts dealing with the provision of better services to the public through harmonious relations with the allied professions. In areas of public relations, ethics, comprehensive services and cooperation with related groups, progress has and is being made. Some of our members are assisting in a survey of Huntsville's proposed Twickenham Historical District. Others are dedicated in making contributions in other ways by serving on planning commissions, and in other public and civic projects, all aimed toward improvement of our communities.

After several months in the planning stages, the Chapter is ready to launch a "War on Community Ugliness" program. The plan will be announced and initiated at the time of our National Convention in June and will receive our major emphasis and efforts during the coming year.

It is our sincere belief that the execution of these programs, in conjunction with the progress of other allied organizations, will help create a better life for each of our citizens.



**It makes a lot more
sense this way.**



323-8911

**ROLL OUT
CONSERV-A-FILE®**

SUPREME

HEAD's

2013 FIRST AVENUE, NORTH
BIRMINGHAM, ALA. 35203



The Central City Urban Renewal Project provides a central business district "loop road" which will allow arterial traffic easy access into or around the central core area. Once into the core area, parking facilities are at strategic locations for immediate and convenient parking. The focal point of the entire core is a "Super Block," a six block area in which the streets will be closed and a plaza with fountains, shrubs, canopies, benches, etc., constructed in their place. The hub of this "Super Block" will be the new 4½ million dollar courthouse surrounded by three major banks, five savings and loan associations, professional office buildings, and various commercial establishments.

PLANNING and ARCHITECTURE in the "ROCKET CITY"

BY DEAN Y. MATTHEWS, DIRECTOR
HUNTSVILLE, PLANNING COMMISSION

TEAMWORK

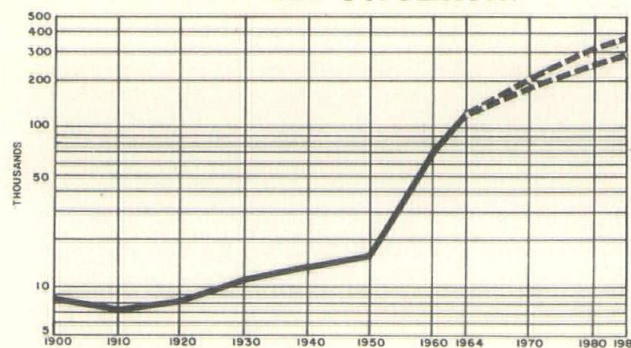
Teamwork is helping Huntsville to reach its goal of becoming a City free of slums in the 1970's. The City's plans and the private plans of developers will exert a powerful force to shape the future Huntsville. Our local architects have an important role in both the planning processes. The next few pages will tell the status of City planning in Huntsville, what we have done, and what needs to be accomplished.

The organization of our City Government is unique in that the Mayor and City Council have appointed policy making bodies (Boards, Commissions and Authorities) over all but a few departments. This delegation of responsibility has extended the effectiveness of each department necessary to meet the need caused by rapidly growing population.

The Planning Commission has the task of helping to formulate and implement a City plan. Teamwork and wide participation similarly have been responsible for its attainment. Ex-officio members have been appointed for liaison purposes; Special "Committee's" have been formed to meet technical needs. Planning is not a one-man job. We have sought special studies from Federal

Agencies and have made liberal use of federal funds for consultants. Candeub, Fleissig, & Adley helped us in advanced planning; Ewald Associates and Thomas A. Jones Asso. in Urban Renewal; and Wilbur Smith in Transportation planning. Other consultants have also been used.

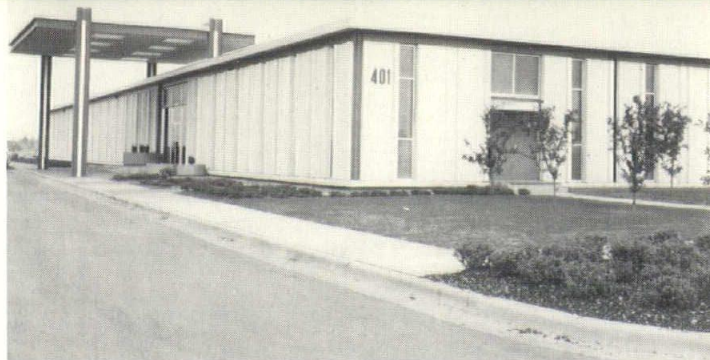
HUNTSVILLE POPULATION



Source: U.S. Bureau of Census and Huntsville Planning Commission



HISTORICAL PRESERVATION



LOCKHEED—RESEARCH PARK



BROWN ENGINEERING—RESEARCH PARK



IBM—RESEARCH PARK

The Planning Commission recently completed a \$150,000.00 planning project with federal assistance. Half of the cost went into aerial mapping which was accomplished by Atlantic Aerial Survey, a local photogrammetry firm.

An economic base and population study established that 90 percent of our basic economy was federally oriented. Our Community Facilities Plan describes the schools, recreational and other facilities needed to serve the anticipated population shown above. Population demands will require 20 additional schools in Huntsville by 1970.

GOALS & NEEDS

Our plan envisions several ideas. A Twickenham Historic Preservation District is proposed for Echols Hills. Through this process, we hope to maintain the historical integrity of this area and to preserve existing development.

Huntsville's Research Park exemplifies the results of teamwork. This four square miles area contains the Research Institute initiated by Dr. von Braun. The total investment in this area is estimated to be in excess of \$50,000,000.00 of blue chip firms hiring 5,800 persons. This is expected to double in less than two years. The Zoning Ordinance restricts development in the area from residential and commercial encroachment. Esthetics is a keynote of control in the Research Park.

Planning and work is being done in several major areas, including a metropolitan park system, transportation planning, parking studies, traffic operation plans, and major street plans.

WHERE DO WE GO FROM HERE?

Presently, the Commission has given emphasis on review of these recently completed planning elements and the adoption of same. Again, all of this is pointed toward plan implementation.

Special Enabling Legislation has been introduced in the Alabama Legislature by our local legislative delegation which will allow County wide planning. This is being spearheaded by the Rural Agricultural Development body. Architects may wish to support this proposed law.

During the summer of 1965, we hope to secure some 20 Auburn Students to help develop a generalized plan for Madison County and of each of the small towns in the County. Publicity of planning throughout Madison County is being accomplished with the efforts of Auburn, also.

Huntsville has several "Site Plans" which are needed: A medical center study is contemplated and also a reuse plan for the airport property. The latter being caused by the relocation of the Huntsville-Madison County Airport. Planning development around the new airport is also being undertaken and steps to incorporate Airport Obstruction Zoning through the creation of an Airport Planning Commission has recently organized.

Perhaps the largest project involved in advance planning is the Community Renewal Plan. The application for the CRP will be evolved so we may get underway when local funds become available.

An electronic data processing committee composed of technical personnel from Redstone Arsenal has been organized to assist the Commission with the data bank through which we propose to secure land use. Other computer uses will be considered.

Although much has been done in planning Huntsville, much more is yet to be accomplished.

MUNICIPAL BUILDING

City of Huntsville

DICKSON, JONES & DAVIS
ARCHITECTS, AIA.



City of Huntsville PUBLIC LIBRARY



REED-MULLINS and ASSOCIATES ARCHITECTS & ENGINEERS

Now under construction in the same block with the new Municipal Building overlooking Big Spring Park is a 220,000-book public library. The exterior face of the first floor is composed of dark brick panels with a mottled glaze and bronze glare-reducing glass to provide a background for the star-shaped columns. A curb-side book chute carries books into the basement stack area. Facilities include children's area, audio-visual room, stage, lounge, display area and conference room. Contractor is O'Donnell Construction Company.

ST. THOMAS EPISCOPAL CHURCH REED-MULLINS and ASSOCIATES ARCHITECTS & ENGINEERS

First phase (four center buildings) of a building program to accommodate 400 communicants was recently completed on a restricted urban site in southeast Huntsville. Grouped around a courtyard, the five classroom buildings, administrative unit, Parish Hall and main church building are designed to provide a warm, inviting complex that will contribute to an atmosphere of worship and sympathize with the predominantly residential neighborhood. Materials are dark brown Norman brick, walnut-stained laminated beams on steel tube columns, light wood T&G deck, and bronze anodized sliding vent sash in Redwood sub-frames. Contractor was Gunn Lumber Company.



Award citation for design Gulf States Regional Conference—1965

Client
City of Huntsville, Alabama

Program
Building Complex to house most City Governmental functions (Legislative, Judicial, Administrative, Public Safety).

Site Location
Selected to fit into a large-scale downtown urban renewal program—an integral part of the developing civic center consisting of several civic structures bordering an urban park and small lake.

Solution
Each program element (Legislative, Judicial, Administrative, Public Safety) required a different type of space and had widely varying traffic and functions. The natural solution was thus to express each element in its own most efficient size, shape and location, while designing each to fit into a harmonious grouping that complements the civic center.

Madison County Courthouse Building

Northington, Smith, Kranert & Associates
Thos. A. Jones
 ARCHITECTS, AIA.

Huntsville, Alabama

A dramatic new 11-story, 4½ million dollar courthouse is now under construction on Huntsville's historic square in the center of the downtown business district.

Two architectural firms of Northington, Smith & Kranert and Thos. A. Jones worked together for 2½ years to design a courthouse that would be both functional and aesthetically compatible with the Heart of Huntsville and the Central City Urban Renewal projects which are explained in more detail in other parts of this issue.

The new building will be the focal point of the Heart of Huntsville Project overlooking the historic Big Spring Park and Lagoon. The building will also be complemented by the closing of the streets on three sides of the square under the Central City Urban Renewal Project which plans a grand plaza with fountains, ornamental lighting, grass areas, ponds and benches to be constructed in place of the streets.

Architects had to solve many problems in the decision to erect the new building on the same site as that occupied by three previous buildings. Among these were a great number of citizens who were reluctant to see the old building removed and the gaping caverns and fissures that existed below the site which would not support a high rise structure without complicated foundation design. After numerous public meetings at which the architects were called on to "back their recommendations," after many test drillings were made at the site, and after an excursion was made into the underground caverns by architects, engineers, and geologist, the decision to proceed was finally issued by the County.

The architects decided to construct a low 3-story portion over the caves to be supported on grade beams and caissons



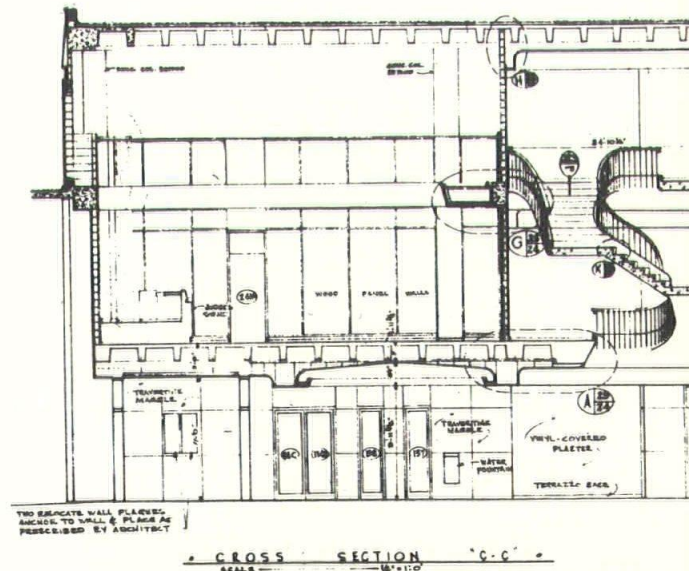
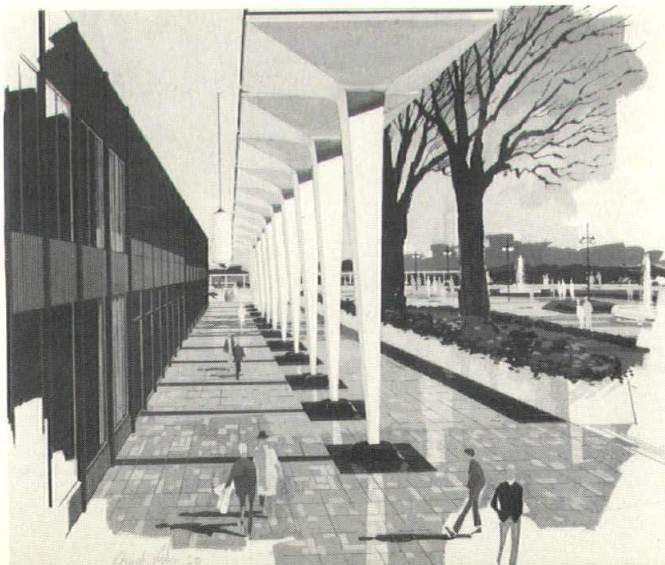
approximately 60 feet long anchored into the bed-rock at the bottom of the caves and to construct an 11-story tower on the south side of the site which test borings indicated to be solid limestone.

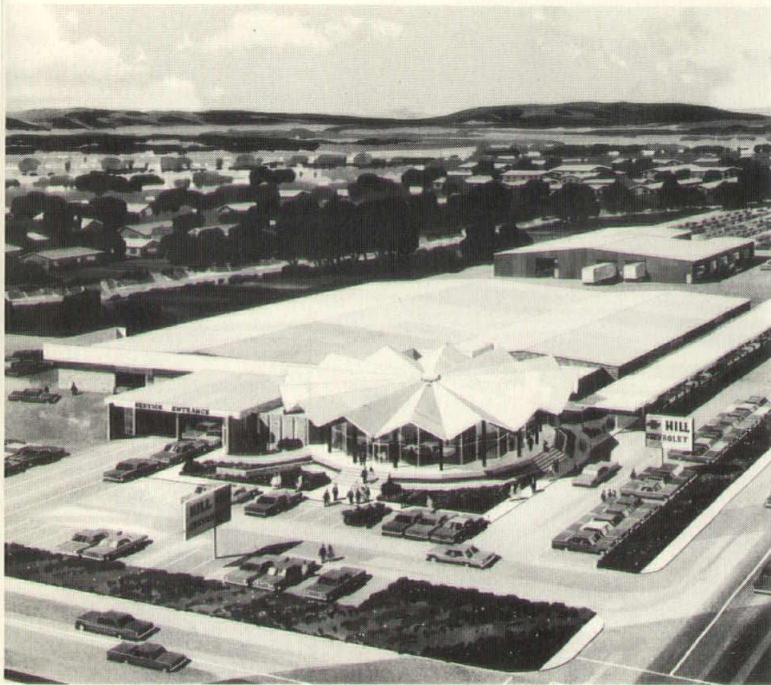
The most impressive feature of the courthouse, however, may be found inside the spacious central lobby. There, architects have designed a symmetrical, free-form "floating" grand stairway which elbows upward three stories in the center of the building (see below). A second dramatic design feature in the main lobby is a 30-foot mural depicting the story of Madison County through the historic figures who helped develop it. This venetian glass mosaic and the massive stairway are designed as the focal point of the interior.

The central lobby is open to a height of three floors, culminating in a dome more than 40 feet above the lobby floor. Scarlet red columns encompassing the grand stairway flow upward through the first three floors.

The building is designed with expansion facilities to 1985.

GRAND STAIRCASE IN LOBBY



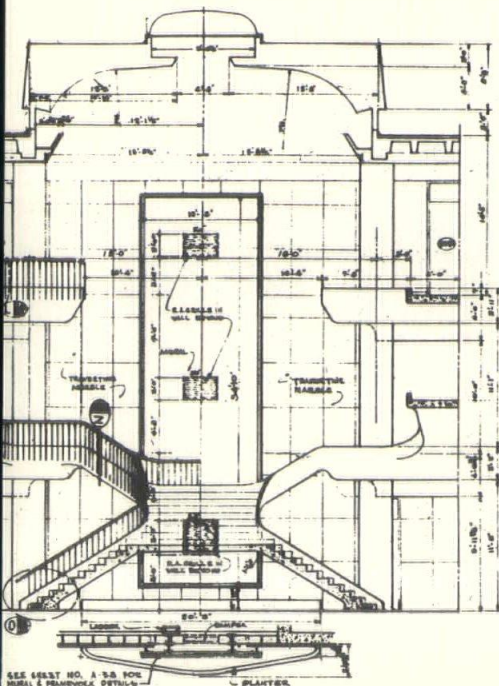


Hill Chevrolet Company

SALES AND SERVICE FACILITIES

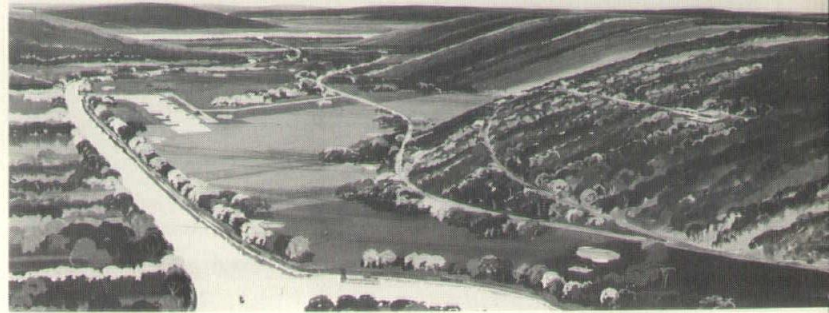
Thos. A. Jones
ARCHITECT, AIA.

New sales and service facilities for Hill Chevrolet Company, Huntsville, Alabama, contains 70,000 square feet of floor space, the largest of its kind in the state. The stage type circular show room is elevated to permit unobstructed observation from the streets and is roofed with tapered folded plates constructed of steel and wood fiber decking. Various components are arranged to provide a streamlined service for the convenience of customers who may wait in a luxurious lounge overlooking the show room and the service area.

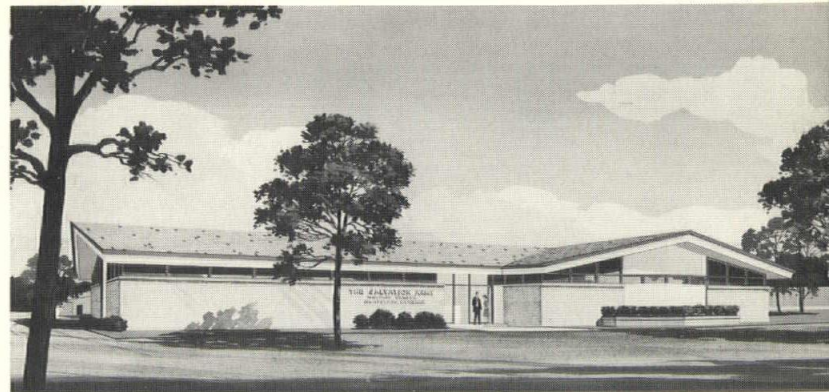


PAINT ROCK RIVER RESORT

Clyde Fleming and Associates
ARCHITECTS, AIA.



This is a 3 million dollar development. The total area to be developed consists of 730 acres. The project is located on the Paint Rock River about three miles from a point where the Paint Rock River empties into the Tennessee River. Land improvements are a marina with restaurant, 100 apartments, country club and restaurant, riding stables, 36-hole golf course, private docking facilities for country club, complete landscaping for picnic and recreation areas, and a large plot of 200 acres reserved for private dwellings development.



Salvation Army Welfare Center

HUNTSVILLE, ALABAMA

Clyde Fleming and Associates
ARCHITECTS, AIA.

This building is to be used as a distribution point for all services to the needy and poor which the Salvation Army presently provides. Included are large storage areas for clothing and food. Also, included is a cafeteria for feeding of transient persons. Included in addition to these facilities is a dormitory for men and a separate dormitory for women and children. Also, included in the building is an apartment for the building caretaker and administrative offices for the local Salvation Army Commander and his fellow officers.



Parkway Country Club

HUNTSVILLE, ALABAMA

Northington, Smith, Kranert & Associates

ARCHITECTS, AIA.

HUNTSVILLE AND FLORENCE

Requirements:

To provide dining and bar facilities for approximately 1,200 to 1,500 members and to provide adjacent swimming pool, bathhouse and tennis courts.

Design Solution:

Parkway Country Club is primarily an evening supper club, entertainment provided both in bar and dining room, dancing in dining room. Private dining rooms were not a requirement. Swimming pool and tennis courts were included for convenience of wives and visitors during the day.

To make full use of two views of entirely different character, the main dining room was placed on the crest of the hill facing the city and the airport. The bar was placed somewhat lower down the hill, facing the residential area. The two areas are connected by a curving, stepped, windowless corridor from which opens a small waiting area, offices and restrooms. Main kitchen, dressing rooms and offices are located in wing to rear. Mechanical equipment is located in basement. The interiors were executed by Northington, Smith & Kranert, with assistance of Knoll Associates. The symbol of tennis racket, fork and bugle is used on the club's silver, menu, letterhead, etc.

E.S. WATTS & CO. INC.

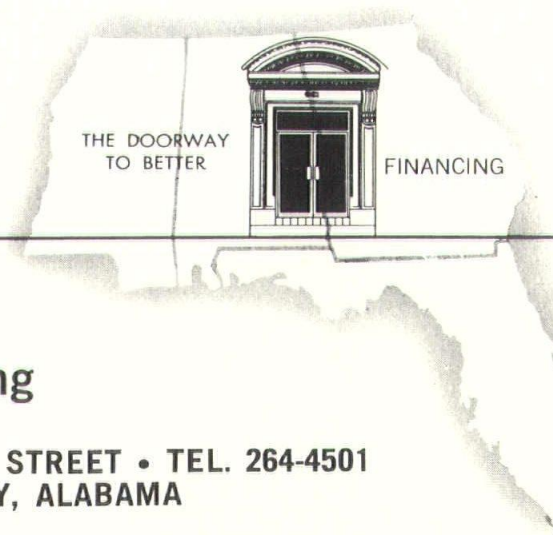
MORTGAGE BANKERS

**Sound financing
is a basic part
of complete design**

**Long Term Residential,
Commercial and Industrial Financing**

**130 CLAYTON STREET • TEL. 264-4501
MONTGOMERY, ALABAMA**

Serving Your Major Long Term Financing Needs



LETTERS

Sir:

I have just received and read with interest the first issue of ALABAMA ARCHITECT, and upon behalf of Auburn University, I extend sincere congratulations. It is a most interesting issue. I shall look forward to seeing ensuing issues of the journal. With best wishes to you and your colleagues of the Alabama Council.

RALPH B. DRAUGHON
President Auburn University

Sir:

First full-dress issue of ALABAMA ARCHITECT is attractive, interesting and professionally well-done from cover-to-cover. Congratulations on your craftsmanship, welcome to the ranks of the deadline-pushers, and best of luck. See "Bright Debut," page 14, South's May issue, now in the mails.

HUBERT BAUGHN
Editor South Magazine

Sir:

I would like to add to that already long list, my congratulations to you, the Alabama Council and the AA editorial staff, for having the foresight, initiative and professional interest to produce such an outstanding and representative publication as the "ALABAMA ARCHITECT." The arrival of your next issue will be anxiously awaited here at the Octagon.

RAYMOND L. GAIO

Director, State and Chapter Affairs
The American Institute of Architects

Sir:

We appreciate greatly having been put on the mailing list for the ALABAMA ARCHITECT. We look forward to receiving future copies, with great interest. We particularly note with interest the matters and activities with which you expect to be concerned. Since our two professions are so intimately related in the design of buildings, we feel that any concern shown by either one of us for the affairs of the other can only produce more understanding and better relationships. We wish to congratulate those who are developing "The Alabama Architect" since I feel sure that it will result in a most worthwhile publication.

JAMES A. EVANS
Consulting Engineer
Birmingham, Alabama

Sir:

Congratulations on the March-April issue of ALABAMA ARCHITECT. The magazine has a most pleasing format and promises to be most beneficial to architects, allied building agencies, and to Alabama. We shall look forward to every issue and will give them a prominent place in our office.

CLAY H. DEAN, Director
Hospital Planning Division
Department of Public Health

Bickerstaff Clay Products Company

*This is the year for you to discover
— or rediscover — the advantages
of clay products.*

FINEST QUALITY

- FACE BRICK ■ COMMON BRICK
- STRUCTURAL CLAY TILE
- CONCRETE BLOCK

Bickerstaff Clay Products Company

COLUMBUS, GEORGIA

POST OFFICE BOX 1178

PHONE 327-3226

BESSEMER, ALABAMA

JONESBORO STATION

P. O. BOX 2087 PHONE 428-3263



T. R. Miller High School
Brewton, Ala.
designed by
Pearson, Tittle & Narrows, Architects
Montgomery, Ala.

- EXTERIORS
- INTERIORS
- AERIAL
- BLACK & WHITE
- COLOR

ARCHITECTURAL PHOTOGRAPHY

Many photos published in architectural forum & other publications

Paul Robertson

935 South Court Street • Montgomery, Ala.
Phone 263-0413

► Special attention to work anywhere in the State



for people on the way up

As you grow in your profession, one of the cornerstones should be a solid program of life insurance designed to fit your individual needs. Our skilled underwriters can provide this service at no cost or obligation to you.

- Life • Term • Endowment
- A & H • Retirement
- Disability Income

life insurance
that grows with you



Guaranty Savings
LIFE INSURANCE COMPANY
MONTGOMERY, ALABAMA

Group Life Facilities also
For Your Employees . . .
Ask About Our "Group to 10"



CHAPTER NEWS

• AROUND THE STATE •

BIRMINGHAM—Regular Chapter meeting held at Relay House atop Bank for Savings Building on April 9th at 4:30 p.m., in the form of a seminar between architects and construction representatives, followed by a social hour and dinner for local members and wives. Slide show on OPERATION NEW BIRMINGHAM by Bill Williams and a special re-run of slides of Frank Lloyd Wright's early work (taken and shown by Chapter member Claude Cornwell) rounded out the delightful evening.

On Friday, April 30, members assembled at a social hour honoring the award winners of the Festival of Arts Architectural Competition. This was followed by the Annual Architectural Lecture, given by Hugh Stubbins, FAIA and vice president of the American Institute of Architects, at 8:00 p.m. at the Museum of Art.

Among other activities during Birmingham's Festival of Arts, members had 2,500 copies of the OPERATION NEW BIRMINGHAM issue of ALABAMA ARCHITECT reprinted and distributed.

MOBILE—Chapter members meet at 12 noon on the last Friday of each month, are continuing an active program. With two up-coming assignments, Chapter members are working hard on a Council backed program. The July-August issue of ALABAMA ARCHITECT will spotlight architecture in the Port City, with Edward Baumhauer, AIA, heading the committee composed of Harry Inge Johnstone, Dewey Crowder, Wayne McRae, Eugene Gray, Thomas Bealle, and Norman Grider. The July Chapter meeting will be at noon on Friday, July 23, at the Town House Motel, following which the Alabama Council will hold its quarterly meeting at the same place. President Fred Dietz has lined up a sailboat excursion the following morning for Council members and wives.

MONTGOMERY—The April meeting was held in Auburn at the University Motor Lodge. Chapter President Parker Narrows AIA arranged the meeting to continue close relations with the School of Architecture and to offer members an opportunity to view the first public exhibition of the 1965 Honor Award winners of the Gulf States Region, which were on display at the School of Architecture Gallery. A highlight of the meeting was the report of the Urban Renewal Committee, which commended the City of Montgomery for its forward thinking and action on this program and offered the assistance of the Montgomery Chapter, AIA.

May meeting was held on Friday the 14th at the Montgomery Country Club, in the form of a "Ladies Night," with no business and emphasis on fun. Julian Harris, winner of the AIA Gold Medal and distinguished sculptor of Atlanta, was speaker.

NORTH ALABAMA—Members met April 14th at the Russel-Erskine Hotel at 12:15, heard guest speaker Phillip C. English, technical representative of the Southern Pine Association talk on heavy timber construction in schools. Always active in civic work, the Chapter is working hard on the survey to set up the Twickenham Historical District. In addition, they prepared editorial material for this issue of ALABAMA ARCHITECT. The May meeting was held on Wednesday, May 12th at 12:15 at the Russel-Erskine Hotel in Huntsville, with Don Martin of the John Hancock Life Insurance Co. speaking on estate planning.

NEW MEMBERS: James A. Pfaffman, 311 Euclid Avenue, Birmingham, accepted as a Professional Associate member in the Birmingham Chapter.

Howard Bozeman, of Dickson, Jones & Davis, Architects, was approved as an Associate member in the North Alabama Chapter.

Birmingham Chapter Offers Resolution to Council—The membership of the Birmingham Chapter, AIA, has voted to present the following resolution to the Alabama Council:

Whereas, the vitality of the School of Architecture at Auburn University is of significant importance to the State's Architectural climate: and

Whereas, the concern and interest of the profession is essential to the strength of the School: therefore

BE IT RESOLVED, that appropriate action be taken by the Alabama Council to insure that effective liason be established and maintained between the School and the Chapters.

(Continued on page 14)

For the finest in finishes...

always specify...

Staco Paint products — architectural paints, enamels, varnishes and stains — are manufactured in Alabama to meet exacting quality requirements of the most discriminating architects, owners and contractors.

Per gallon price is usually no higher than that of some other brands often specified. Yet, Staco offers many extra advantages. Having the factory located near the job means less transportation costs involved... prompt availability of technical assistance... superior delivery service.

Savings possible through these lowered selling and servicing costs in addition to manufacturing efficiency are reflected in generous use of more expensive ingredients in our product. And that means pleasing and more completely satisfying results in your finished job.

When specifying, consider Staco Paint products — the name to merit your confidence. We're ready, willing and anxious to furnish information or assistance to you. Just telephone (205) 592-8958 (collect) and ask for: L. Vastine Stabler, L. C. Burks, Philip H. Boyd, Claude F. Kersh, Bill Hathcox, E. E. "Buddy" Strickland or Emery M. Lowry.



STABLER PAINT MFG. CO.
INCORPORATED

3827 First Avenue North / Birmingham, Alabama 35222

ESTABLISHED 1903
Robert Jemison, Jr., President



Business and Commercial Leases
 Industrial Properties
 Property Management
 Mortgage Loans • Appraisals
 Developers • Sales

Jemison
Realty Company

2105 3rd Ave., N. / 251-5141

CHAPTER NEWS *(Continued from page 12)*

Jack Bass Smith, FAIA, Named Member Emeritus—Jack Bass Smith, FAIA, has been made a Member Emeritus of the American Institute of Architects and of the Alabama Council, it was advised in a communication from O. H. Thorson, Secretary of the Institute. The Emeritus status of Mr. Smith is effective retroactive to January 1, 1964.

Hugh Ellis, AIA, Named Delegate—Hugh W. Ellis, AIA, Alabama Council president, has been named a delegate to the XI Pan American Congress of Architects, which will be held in Washington in June, simultaneously with the national AIA convention.

Montgomery Chapter, AIA, to Host State AIA Convention in Fall—Parker Narrows, AIA, president of the Montgomery Chapter, AIA, has officially extended an invitation to the Alabama Council, AIA, for the capital city chapter to host the 1965 Convention. Tentatively scheduled for late October, Parker will soon announce the appointment of committees to assist in the meeting.

Present plans call for the convention to start Thursday afternoon, with main business, programs and exhibits on Friday, and wind up Saturday morning. A brilliant aftermath currently includes a major football game at Auburn.

Educational exhibits are planned to be a major feature of the convention.

Gulf States Regional Conference May Be Held At Convention—Alabama Council president Hugh Ellis has extended an official invitation to the Gulf States Regional Conference to hold the fall Executive Committee meeting of that group in conjunction with the all-member State Council and Chapter Conference in Montgomery in October. It is hoped that the Regional officials will accept the invitation.

New Regional Director—Dan Cowling, Jr., of Little Rock, Arkansas, was nominated at the Gulf States Regional Conference for a three-year term as Gulf States AIA Regional Director, to succeed G. Scott Smitherman of Shreveport.

Arch Winter Receives Citation For Shreveport Design—At the recent Gulf States Regional Conference held March 26 in Biloxi, Miss., the first Institute Citations for Excellence in Community Architecture were presented to the City of Shreveport, La., and to Arch Winter, Mobile, who prepared the plan. The presentation was made by G. Scott Smitherman, Regional Director, AIA. Also receiving a similar award was the City of Detroit.

Alabama's largest!

Over \$400,000,000 in Mortgage Loans!

Specialists in long-term financing on income properties

- Apartments • Commercial Buildings • Medical or Dental Clinics
- Shopping Centers • Warehouses • Offices • Nursing Homes

COBBS, ALLEN & HALL
 MORTGAGE COMPANY, INC.

- BIRMINGHAM Phone 323-4481
- HUNTSVILLE Phone JE 9-3701
- MONTGOMERY Phone 265-9556

- MOBILE Phone GR 1-1526
- DECATUR Phone EL 5-1441
- PENSACOLA Phone 433-6569



ARMSTRONG FLOORS

DISTRIBUTORS

MOHAWK CARPETS

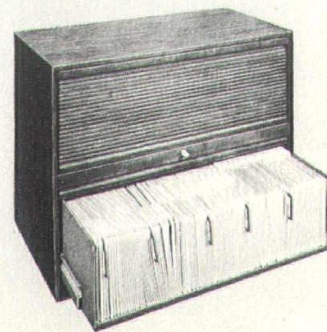
The right floor covering for any job
Let our trained personnel assist with your
specifications

Birmingham
 501 So. 12th St.
 Phone 323-1694

Montgomery
 704 No. Perry St.
 Phone 262-6676

NEW PRODUCTS AND SERVICES

Now! All the benefits of Roll Out Conserv-a-file® in executive wood cabinetry!



- Magnificently handcrafted walnut case in choice of natural oil, gunstock oil, gunstock lacquer or natural lacquer finishes.
- Distinctive tambour-type doors slide up and retract out of sight. Doors may be locked simultaneously with one turn of the key.—James A. Head & Co.—Birmingham, Alabama

Arch Winter Becomes Fellow of Institute

For notable contribution in design, Arch Winter, Mobile, will receive the honor of Fellowship and Membership in the College of Fellows. Certificates and medals will be presented at the Annual Dinner on June 18, 1965, at the Sheraton Park Hotel, Washington, D. C.

Trophy for Best Exhibit



The School of Architecture and the Arts at Auburn University was first place winner in the 13th annual Village Fair April 10, 1965 when more than 2,000 high school visitors were conducted on tours of the Auburn campus. Receiving the handsome trophy from Dan Palmer of Columbus, Ga., director of school organizations, was the School president, Skip Christy of Mobile. The winning exhibit featured art and designs by students as well as music.

Since 1887 . . .

HANNA PAINTS

- Hi-fashion decorator colors
- Exterior house colors
- Enamels and stains
- Industrial and machinery finishes
- Commercial and contractor finishes
- Marine and farm finishes
- Special made to order finishes

See your dealer or

HANNA PAINT CO.

Phone 323-5201
1018 Fifth Ave. So.
Birmingham, Ala. 35205



*the modern building
should include a modern
communications
system*

To meet this need, telephone service and equipment for every business and home requirement is being developed by the Bell System. Teletypewriter and data transmission facilities... PBX installations... apparatus closets... pre-wiring... telephone outlets at all electrical outlets.

For assistance in the development of communications systems for your clients, just call our Architects' and Builders' Service and we will be glad to have a representative see you at your convenience. Their help is available without cost.



Southern Bell

...Serving You

for properly designed buildings, it's essential to consult a professional architect . . .

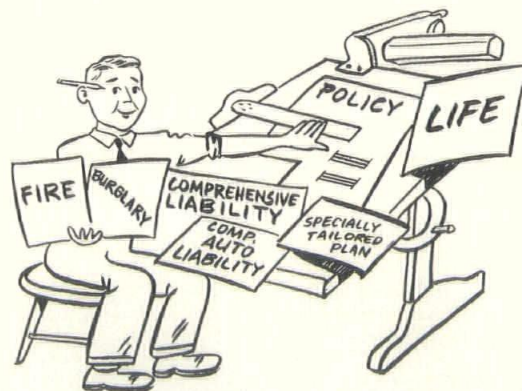
for properly designed insurance coverage, it's important to consult a professional insurance agent . . .

Those representing the



are professionals. Let one of them design your insurance program with

ONE POLICY
ONE PREMIUM
ONE AGENT



The South's Leading General Agency
in Insurance Research and
Development

W. J. PERRYMAN
AND COMPANY, INC.

NEW OFFICE
2900 Cahaba Road, Mountain Brook
BIRMINGHAM

THE ALABAMA ARCHITECT
Suite 501—Guaranty Savings Bldg.
P. O. Box 267—Montgomery, Ala.

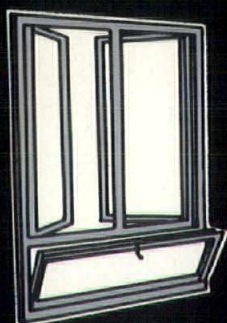
LEAVELL JAY C
1640 SO PERRY ST
MONTGOMERY ALA 36104

BULK RATE
U. S. POSTAGE
PAID
BIRMINGHAM, ALA.
PERMIT No. 286

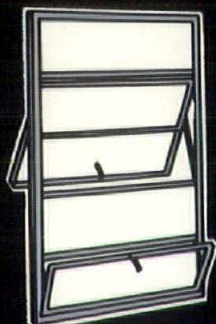
Alabama's **CENTRAL** Source
for Technical Information
and Distribution of

Aluminum Windows

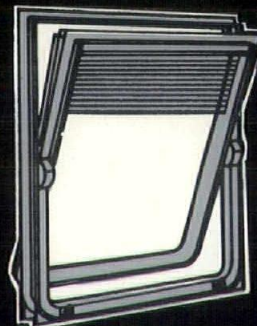
Representing the Nation's **MAJOR MANUFACTURERS** of
ALUMINUM AND STEEL WINDOWS



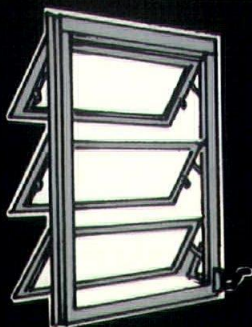
COMBINATION
CASEMENT



PROJECTED



THERMAL CONTROL



AWNING



DOUBLE HUNG

Also a Complete Line of **CURTAIN WALL &
Complete Line of BUILDING SPECIALTIES**

Modernfold Folding Doors
Hotpoint Built-In Appliances
Nutone Built-In Equipment
Kwik-Set Hardware
Amweld Hollow Metal

Majestic Fireplace Grills
Kitchen-Aid Dishwashers
Sun Control Grills
Kane Detention Screens
Nord Wood Doors & Columns



Southern Sash
SUPPLY OF MONTGOMERY, INC.

506 No. Court • P. O. Box 446 • Phone 265-3521 • Montgomery, Ala.