

Clem Labine's TRADITIONAL BUILDING

Historical Products For Today's Professional

J A N U A R Y / F E B R U A R Y 1 9 8 9 V O L . 2 N O . 1 \$ 3 . 0 0

Cedar "Thatch"

See a house transform before your very eyes! C & H Roofing, in Sioux Falls, South Dakota, has re-invented the process for creating the undulating free-form cedar shingle "thatch" look that was popular in the 1920's. Most of those original English Cottage roofs have been replaced with plain-Jane asphalt shingles — but the materials and techniques for recreating them are now available to any roofing contractor. Besides doing complete installations itself, C & H will sell kits to other contractors: pre-bent cedar shingles (both gable- and eave-bent), preassembled fascia boards, a detailed framing manual, and even a video. Understanding that modern builders don't have the time and experience to work on this style of roof, C & H has framing components that allow a conventional roof to accept its molded shingles. Also available are components for "eyebrow" dormers and changing roof levels. The thatch butt shingles have a pre-cut, angled buttline which allows them to be laid in varying degrees of exposure

*continued on
page 22*

Exterior Lighting SourceList

PAGES 11 & 12

Bulk Rate
U.S. Postage
PAID
Permit No. 1
Manchester, N.H.

Address Correction Requested.
Return Postage Guaranteed.
199 Berkeley Place, Brooklyn, N.Y. 11217

perspective

AIA's Vision 2000: Rehabilitation Work Will Increase . . . If There Are Enough Skilled Craftsmen

This month we're turning our Perspective column over to Ted Pappas, president of the American Institute of Architects. Pappas has been spearheading "Vision 2000," the AIA's ongoing program to assess the future of architecture in the 21st century. These remarks, condensed from a talk given at the 42nd annual meeting of the National Trust, contain fascinating insights into the kind of workforce we're going to need in the 1990's. And compare those needs with the problems faced today by a company trying to recruit skilled metalworkers (see story on the opposite page). — CL

by Ted Pappas, FAIA

While architectural preservation is not AIA's prime mission, it remains an abiding concern of both the Institute and individual architects. We have just obtained a fascinating glimpse of the future of preservation as part of the program we call "Vision 2000."

The American Institute of Architects created the Vision 2000 program as a way to look at the future of our profession. Our goal was to examine trends in society that will influence the built environment. The Vision 2000 program assembles information in a variety of ways, including conferences, workshops, focus groups, consultant services, and independent research.

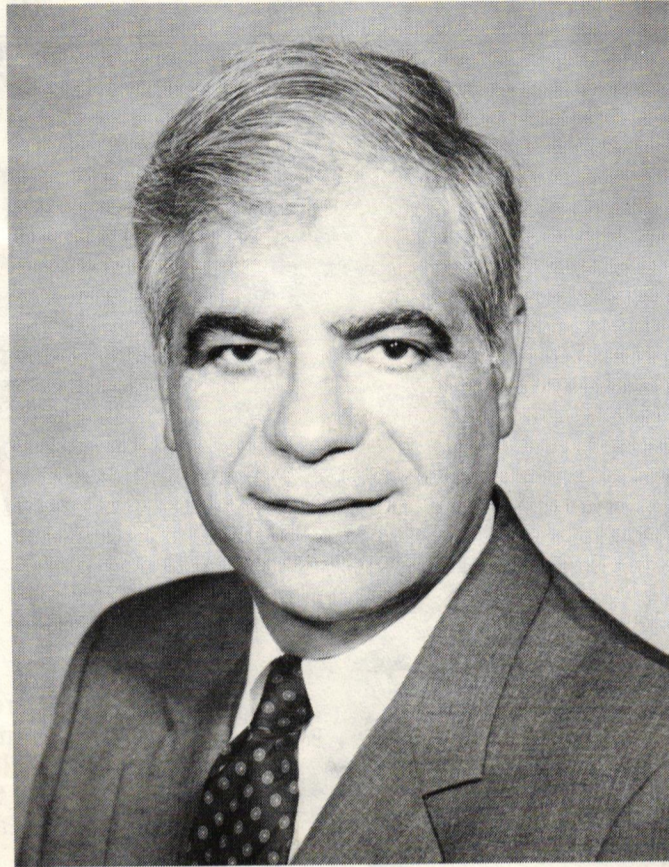
From the very first step of the Vision 2000 process, preservation and restoration emerged as powerful influences in American culture, along with such forces as changing demographics and the globalization of the economy.

**arly 20th century
en termed *The Era
ding. We can
rize the 1990's as
Of Rebuilding.***"

the preservation movement has done a job of creating support and demand for preservation. Americans value their architectural heritage ever. Twenty years ago, the National Register had 250 historic districts. Today, the list has grown to over 6,000. The support that has been marshalled for preservation is nothing short of remarkable.

With public receptivity to preservation issues, independent researchers predicted that the broader field of nonresidential rehabilitation, once the stepchild of the building industry, will soon overtake the entire nonresidential new construction sector. H.G. Wells termed the 21st century "The Era of Building." We can just as easily characterize the 1990's as "The Era of Rebuilding."

After the initial research step, AIA then asked Lou Harris to survey knowledgeable observers of the built environment to determine which of those trends uncovered by our researchers were most significant. The Harris survey of business leaders, social scientists, technologists, educators, and allied professionals ranked "renovating built America" as the second most important



"The message is inescapable: Americans want preservation. And architects and the entire design and construction industry must be prepared to meet that demand with skill and sensitivity." — Ted Pappas

trend, after the "urbanization of suburbia."

Our survey participants also pinpointed several implications of these trends. They include:

- Rehabilitation of existing buildings will outpace new construction.
- Older neighborhoods will grow in importance and desirability.
- The continuing deterioration of our roads, bridges, airports, and public buildings will increasingly impede new construction.
- We will need a highly skilled workforce to perform the kind of rehabilitations that the public will demand.

Armed with information about these and other trends, the AIA moved to the 3rd step in Vision 2000: We convened a conference called "The Challenge of Change." More than 300 educators, members of collateral organi-

"We will need a highly skilled workforce to perform the kind of rehabilitations that the public will demand."

zations, architects and students gathered to share visions of the future. After two days of discussion and debate, our conference ranked 14 issues that architects had best prepare for. Leading the list were these two issues:

- #1. Computer-aided design and engineering;
- #2. Growing public support for preserving America's architectural heritage.

No matter how you slice it, it's clear that Americans want more architectural preservation. Architects and the entire design and construction industry must be prepared to meet that demand with skill and sensitivity. ♦

letters

Dear Editor,

Thank you for the favorable comments given our products on page 6 of the November/December issue.

We were disappointed, however, that the pricing was in error. Please inform your readers of the correct prices, as follows: the toaster is \$189; the scale, \$129; and the towel dispenser, \$119. Thank you for clearing this up.

Ben Crocker
Iron-A-Way, Inc.
Morton, Ill.

Dear Editor,

I love Traditional Building! But how do I keep it? All the other large-format periodicals I subscribe to either get caught in the recycled newspaper pile or are impossible to reference because they sit folded up in a stack of other reading matter. Help!

Deb Sachs, AIA
San Francisco, Calif.

Glad you asked; we were wrestling with that same problem here at corporate headquarters. Quill Corporation makes an oversized data binder (the kind used to store computer printouts) — catalog #14711N — that, with the help of a hole-puncher, does the trick. Call them at (east of the Rockies) 312-634-4800 or (west of the Rockies) 714-988-3200. —Ed.

Dear Editor,

Thank you for a great publication. The quality of the editorial content was very refreshing. The special section on Historical Door & Window Hardware was of particular interest to us as distributors of builders' hardware.

Keep up the good work; success is imminent.

Anthony Calistro
J.E. Smith & Company, Inc.
Waterbury, Conn.

In This Issue

- Historical Products . . . 4
- Special Report:
- Exterior Lighting . . . 7
- Product Literature . . . 21
- Architorture . . . 22
- Siegel's Scratchboard . 23
- Editorial Index . . . 23
- Advertiser Index . . . 23

TRADITIONAL BUILDING

Historical Products
For Today's Professional

199 Berkeley Place
Brooklyn, NY 11217
(718) 636-0788

Editor & Publisher Clem Labine
Managing Editor Judith Siegel Lief
Contributing Editor Eve Kahn
Art Director Judith Siegel Lief
Advertising Manager Susan Littman
Circulation Tana Bigelow
Data Security Magnolia Shepherd

A Note To Contributors: TRADITIONAL BUILDING solicits reviews of historical products from building and preservation professionals. A query letter to the editor describing the product and scope of the review is suggested. Photos of outstanding examples of Neo-Traditionalism and Architorture are also sought. While we will be careful of all materials submitted, we cannot be responsible for non-receipt or loss; please keep copies of all materials sent.

TRADITIONAL BUILDING (ISSN 0898-0284) is published bimonthly by Historical Trends Corp., 199 Berkeley Place, Brooklyn, NY 11217. Telephone: (718)636-0788. Subscription rate to professionals in architecture, construction and preservation in the U.S. and possessions: \$18/yr. (6 issues). Rate for nonprofessionals and subscribers outside U.S.: \$30/yr., U.S. funds.

Contents of Traditional Building are fully protected by copyright and must not be reproduced in any manner whatsoever without written permission from the publisher.

© Copyright 1989 by Historical Trends Corporation. All rights reserved.

traditional building profile

AT THE CUTTING EDGE OF METALWORKING

Jean Wiant and his fellow craftsmen at LMC Corp. are reintroducing repoussage and other "lost" arts into architectural metalworking.

by Clem Labine

What do you do for an encore after winning international acclaim for recreating the torch and flame on the Statue Of Liberty? That was the dilemma facing Jean Wiant and his firm, Les Metalliers Champenois — also known by the less formidable name of LMC Corp.

Wiant's answer: become one of the leading architectural metalworking companies in the U.S., specializing in custom-forming metal by the age-old process of beating it into shape with hammers and other traditional hand tools.

LMC is the U.S. subsidiary of a French company of metalworkers. It has been operating in the U.S. since 1984, when it was selected over 24 other firms for the contract to build the new torch and flame of the Statue of Liberty. LMC is very proud that the Statue of Liberty project was completed on time and within budget.

Although the firm is capable of producing monumental architectural elements (like three 6-ft. classical copper urns decorated with acanthus leaves), it also works on smaller bread-and-butter projects such as hand-wrought grilles, gates, and stair railings — both classic and contemporary. LMC's craftsmen are skilled with iron, steel, copper, brass, and bronze and have developed proprietary and patinating processes.

One of LMC's more spectacular recent projects was recreating copper shingles for the dome of Brooklyn Borough Hall as part of a multimillion-dollar restoration of the 1850 classically styled structure. All the original copper shingles had long since disappeared, and a tentative decision had been made to re-sheath the dome using cast aluminum. LMC was consulted to see if it would be economically feasible to reproduce the original copper shingles. Ten days later, LMC delivered to the architects (Conklin Rossant) a sample hand-made patinated copper shingle and convinced everyone that copper shingles would best meet both the aesthetic and practical goals of the restoration program.

After receiving the contract, LMC built a full-scale, 13-ft.-high model of a quarter-section of the dome, framed in wood and covered with plaster. This was used for establishing the shape of each of the 14 rows of shingles. The dome is separated by eight vertical ribs; each rib is covered with additional copper shingles.

With clay models, LMC craftsmen sculpted the 14 different master shingle models — ranging in size from about 4" x 8" to 12" x 30" — and submitted them for the architects' approval.

Using the repoussage technique, craftsmen shaped each of 14 master shingles in copper. (Repoussage creates a relief pattern by beating the underside of metal with a hammer.) Subsequent shingles were mechanically pressed in special molds and hand-finished to assure correspondence with the master. Each shingle was then numbered and given several coats of a special patinating solution to impart a natural-looking verdigris finish.

The shingles were affixed to the dome using a system of copper clips — a procedure that had been carefully worked out on the full-scale model at the shop in Paterson, N.J.

Jean Wiant, General Manager of LMC, is no desk-bound manager. In fact, he's more of a Renaissance man. A skilled metalworker, he's apt to take a hammer in hand and, with a few deft blows, show an apprentice how the job should be done. But he also bids all LMC's jobs and gets intimately involved with design, spending many hours at his drawing board. On top of all this, he handles all the administrative details of running the shop, and hiring and training his metalworkers. LMC usually has 6-12 craftsmen on staff — depending on its workload.

Almost all of LMC's metalsmiths have been trained in France. According to Wiant, he is making every effort to hire and train American workers, which is good news, given the projection of an increased need for skilled artisans. See "Perspective," opposite.

Jean Wiant can be reached at: LMC Corporation, 118 Second Avenue, Paterson, NJ 07514. (201) 279-3573. ♦



A 13-ft.-high full-scale quarter-section model of the Borough Hall dome was a vital tool in shaping each of the 14 rows of shingles, and in working out the system of copper clips to hold the shingles in place.

Photo: Everett Ortner



Jean Wiant, left, General Manager of LMC Corp., can frequently be found up on a scaffold providing close-up supervision of the metalwork installation process.



The restored dome of Brooklyn Borough Hall rests securely under its helmet of 650 new handmade patinated copper shingles.

Photo: Ralph Walter, AIA

historical products

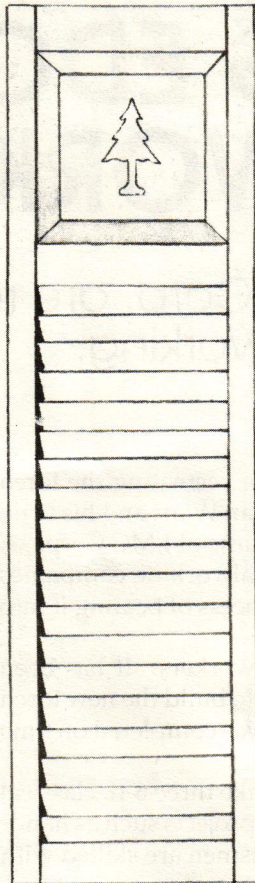
Factory "Museum" Still Makes Shutters

By all rights, it should be a museum. But it's still at work, cranking out louvered shutters. Beech River Mill Co., Centre Ossipee, N.H., uses 19th-century water-powered equipment for making its shutters. One advantage of this old equipment: it's easily adapted to custom runs.

Pictured here is the Panel-Top Shutter (Model WB201). The standard specs are: 1-3/4" stiles, 2-3/8" top and bottom rails, and 3-1/2" cross rail. The measurements are almost irrelevant, however, because Beech River can set up its machinery to accommodate any dimension. What is also special about this shutter is that any design can be cut in the top panel—either one of the firm's standards, or your unique decoration.

Beech River Mill makes louvered (movable or fixed) or panelled shutters and doors, cabinet doors, room dividers, and louvered vents for houses and even yachts! Most products are clear dry pine, but they also work with cherry, mahogany, cypress, oak, and ash. The catalog has an elaborate estimate form so you can order a product specific to your design.

Send \$5 for catalog to: **Greg Dales, Beech River Mill Co., Old Route 16, Dept. TB, Centre Ossipee, NH 03814 (603) 539-2636. CSI# 06470 — JL**



Treasure House of 19th-Century English Fabrics and Papers

Christopher Hyland is a man who loves Victorian design. But he's quick to point out that he's not devoted to historicism for his own sake. Rather, he loves the richness of pattern and palette that many Victorian papers and fabrics offer to today's designer, both for period restorations and free adaptation in new traditional buildings. Hyland has just opened a New York showroom and has lined up an impressive array of English suppliers of 19th-century papers and textiles—both historic documents and interpretations.

He is the exclusive distributor for Putnam, Timney-Fowler, Newbery, and Watts & Co. Putnam produces cotton fabrics based on 19th-century blue-and-white china patterns. Timney-Fowler's black-and-

white fabrics are inspired by medieval, classical, and Victorian sources. Newbery makes fine trimmings and tassels that are less expensive than comparable products from Scalandre. Watts & Co., founded in 1874, still produces lush, elegant 19th-century designs for wallpapers and fabrics, including exquisite original patterns by Pugin.

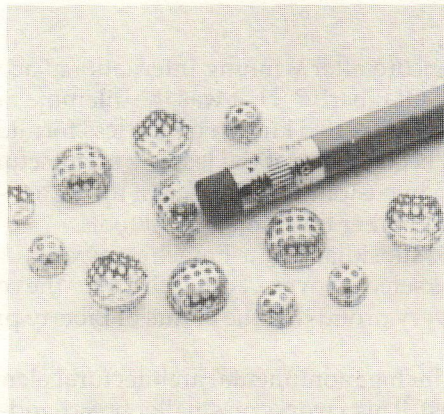
Wallpaper prices range from \$40/roll for silk-screened versions of Watts papers to \$300/roll for papers produced from the original wood blocks. Fabrics can cost as little as \$18/yard. Free brochures describing some of the lines are available, and sample books can be purchased. **Christopher Hyland, 979 3rd Ave., Suite 1708 Dept. TB, New York, NY 10022 (212) 688-6121. CSI# 09950 — CL**



Woven tapestry pattern from Watts & Co. evokes Elizabethan embroidery.

THE TINIEST MOISTURE VENTS

Every living system needs to breathe, and buildings are no exception. Circulating air keeps paint from peeling, siding from rotting, and basements from mildewing. The least obtrusive way to ventilate is to install tiny vents.

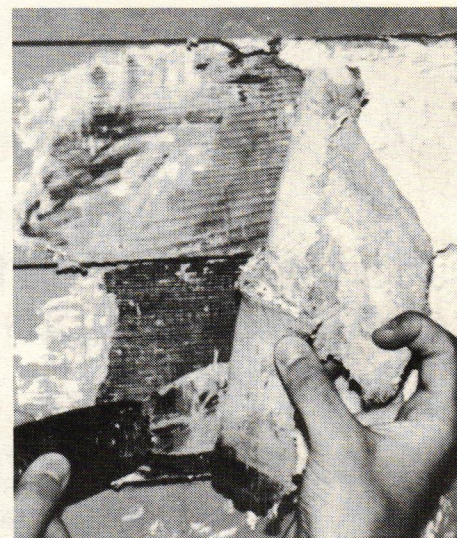


The tiniest we've seen come from the Midget Louver Company, in business for 40 years. None of their products is larger than six inches in diameter; the smallest, (shown above) known as "midget thimble louvers," come in quarter-inch-wide models (they can be pushed into a pre-drilled hole with the eraser end of a pencil).

There are nine styles available: with or without screens, with or without vents that open and close. Custom finishes can be applied for an extra charge, such as anodizing, baked white enamel, or chrome plating. Prices range from \$3.25 per 100 for the thimble louvers to \$49.08 per dozen for six-inch louvers with vent control.

Catalog is free from: **Midget Louver Co., 800 Main Ave., Dept. TB, Norwalk, CT 06851 (203) 866-2342. CSI# 15880 — EMK**

RIP 'N STRIP



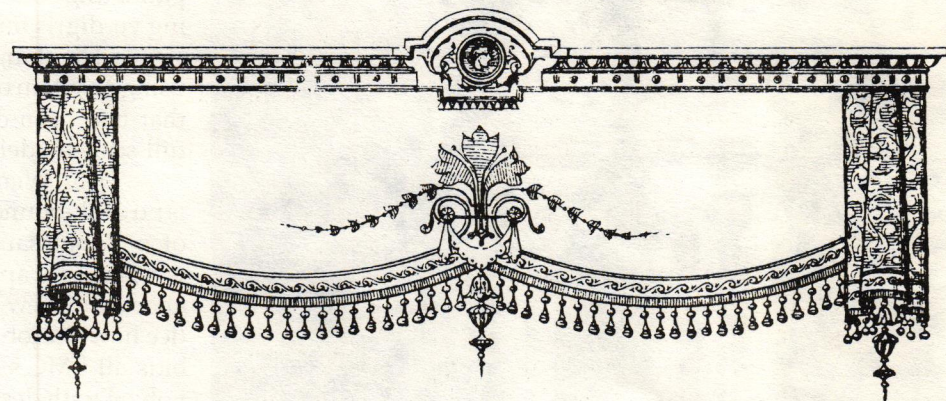
Anyone who works on old buildings knows that the messiest, most dangerous, and time-consuming task of all is stripping paint. And most of the "like-magic" products either don't work, or have nasty side effects like raised grain and discolored wood.

We've heard hearty recommendations for a new product from Diedrich Chemicals called Rip-Strip. Left on for 24 to 48 hours, it turns accumulated paint into a solid clump that can be chipped off or, if misted with water, peeled from the wood. It is unlikely to damage the wood surface because its caustic formula includes liquid vinyl, which forms a skin around the clump of paint.

The product comes in 2- or 5-gal. plastic pails, for \$14.50 per gallon. It is available through distributors only—and definitely is not a product for amateurs. It is extremely caustic, and while it emits minimal fumes, workers using it should be fully covered and masked to guard against splashes.

The company's free product literature includes full safety precautions. For more information, contact: **Diedrich Chemicals, 7373 South 6th St., Dept. TB, Oak Creek, WI 53154 (800) 323-3565. CSI# 09900 — EMK**

VALANCES FROM THE PAST



Beverly Hafemeister, proprietor of Vintage Valances, studies the methods of 19th-century drapers in order to create intricate, historically accurate window dressings.

"Back then they cut draperies to fall into place properly. Today they cut draperies for the convenience of the workroom."

Her \$12 catalog comes with fabric swatches and shows the window treatments of various eras that she can replicate. But she welcomes more unusual orders. "People see the catalog and think that's all there is. I

wish I got more weird requests; time and materials are the things that cost money, no matter what the style."

In particular she wants to tackle window dressings from the 20th century. "If people saw more of those around, they wouldn't feel they have to Victorianize everything. There are so many other possibilities."

She will research fabrics and designs for customers, who include museums and designers. Free brochure. **Vintage Valances, Box 43326-TB, Cincinnati, OH 45243 (513) 561-8665. CSI# 12500 — EMK**

The Great Wallpaper Hunt

Know of a vintage house with samples of original wallpaper or fabric from the 18th, 19th, or early 20th centuries? If so, you may be able to help the owners achieve fame and fortune (well, a room's worth of free paper at least).

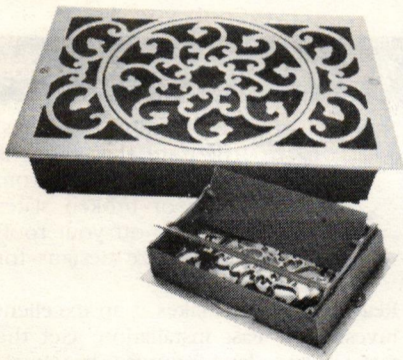
The National Preservation Institute and Richard Thibaut, Inc., America's oldest wallpaper firm, have begun their second joint venture in the reproduction of fine wallcoverings from historic American homes. A team of experts from NPI and Thibaut are currently screening samples from houses all across the U.S. for possible inclusion in the new collection.

Authentic period samples are being evaluated on the basis of attractiveness, design feasibility, and sales potential. Many of the samples used in Thibaut's previous reproduction collection were found hidden under layers of newer papers, in closets, or behind large mirrors or bulky furniture.

Owners of papers selected for inclusion in the new collection will receive a room's worth of free wallpaper, and a color photograph and brief history of the house will appear in the 11,000 sample books that Thibaut distributes across the country.

Anyone with samples for consideration should contact: **James Massey, National Preservation Institute, National Building Museum, Judiciary Square, N.W., Washington, DC 20001. (202) 393-0038. — CL**

GRILLE O' MY DREAMS



The best single source for old-style registers and grilles is Reggio Registers. They carry solid brass and cast iron grilles in a wide range of sizes. (If you can't find the size you need, they suggest pairing matching or different-sized grilles.)

Featured here is a solid brass register with a cast-iron body and louvers. Unique to this piece is that, rather than using a key or screwdriver to open and close the louvers, you simply rotate the center section.

This, the 900 Series Brass Register, measures 8-3/4" x 13" overall; 3" open and 4" closed in depth; weighs 15 lb. and sells for \$159.95 (\$5.25 additional for shipping).

Other items in the catalog include: cast iron shelf brackets, coat hooks, a dragon humidifier, and more.

For free catalog or more information, contact: **Reggio Registers, P.O. Box 511, Dept. TB, Ayer, MA 01432 (617) 772-3493. CSI# 15880 — JL**

RUSSAK RESTORATION COBALT 267-0772

TOTAL EXTERIOR RENOVATION

- Roofing: Slate & Asphalt Shingles Repairs & New
- Painting: Interior & Exterior Residential, Commercial
- Gutters & Leaders
- Siding Repairs
- All Types of Copper Work
- Power Washing
- Chemical Cleaning
- Masonry Water Proofing & Pointing
- High Work
- Free Estimates

7 GRIST MILL LANE COBALT, CT 06414 (203) 267-0772

Circle No. 119

WOODSTONE... TEN YEARS OF WOODWORKING SERVICES

Not only does WOODSTONE manufacture only the finest custom solid wood windows, doors and architectural millwork...

IN VIRTUALLY ANY SIZE, SHAPE OR WOOD SPECIES...

WOODSTONE OFFERS SERVICE!

TRADITION & TECHNOLOGY™ including:

- True made-to-order large & small project capacity.
- CAD CAM to match any other manufacturers' dimensions.
- A thin 1 1/8" overall muntin width available with insulating glass.
- Insulating glass available in virtually any shape.
- Glass from Beveled to Bull's Eye & Low-E to Leaded.
- Guaranteed pricing. Product Warranty.
- 24-HR FAX service & prompt detail description & job costing.
- On-the-road consultation & site visits... before & after the sale.
- Mortise & tenon joinery.
- An established landmark historical reproduction track record.
- Replacement packs for energy conservation & remodeling.

For an illustrated brochure, send \$3.00.



THE WOODSTONE COMPANY
Box 223, Dept. TB, Westminster, Vermont 05158
802-722-3544 or 802-722-4784 FAX 802-722-9528

WOODSTONE®

WOODEN WINDOWS & DOORS

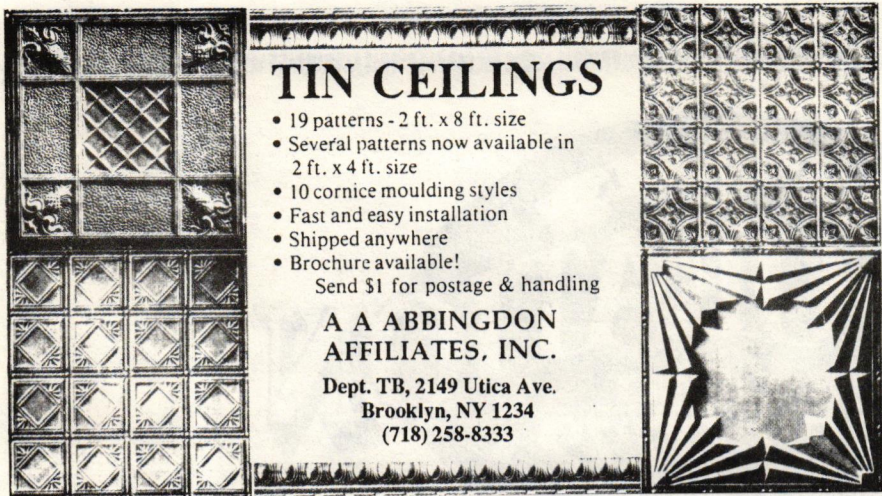
Circle No. 94

COLONIAL WOODWORKS

Distinctive Craftsmanship for Over 50 Years

Send \$5.00 for 60 page catalog to:
COLONIAL WOODWORKS

Department TB
Post Office Box 19965
Raleigh, North Carolina 27619
(919) 783-5592



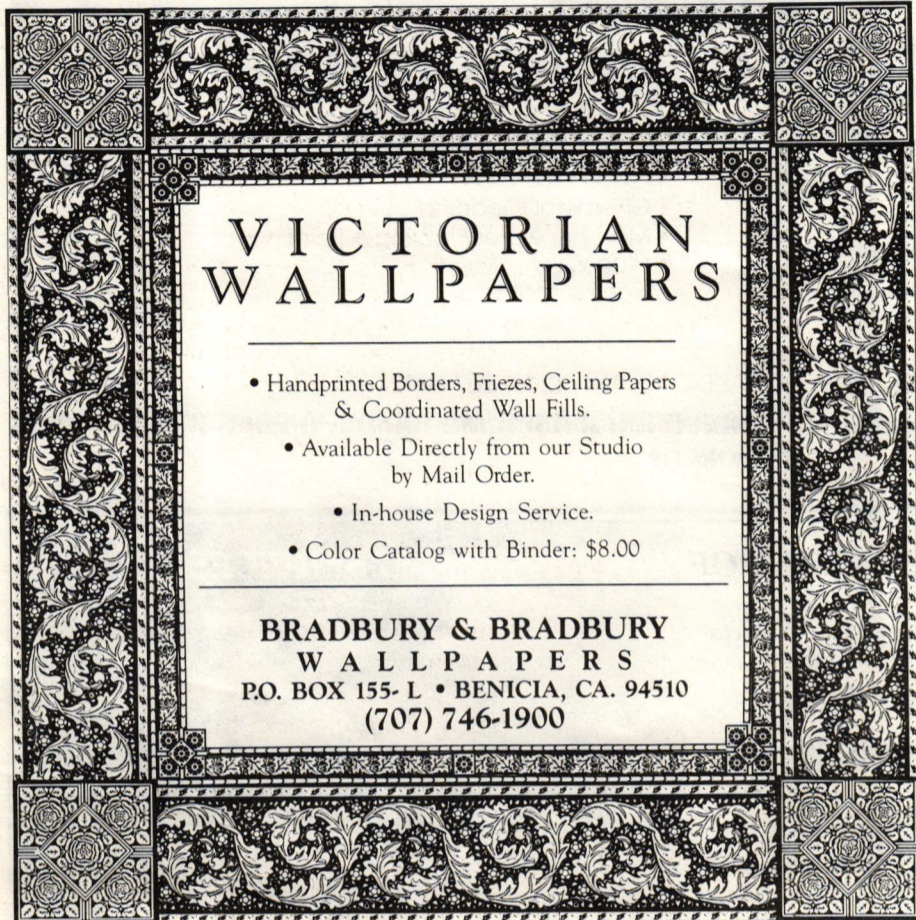
TIN CEILINGS

- 19 patterns - 2 ft. x 8 ft. size
- Several patterns now available in 2 ft. x 4 ft. size
- 10 cornice moulding styles
- Fast and easy installation
- Shipped anywhere
- Brochure available!

Send \$1 for postage & handling

A A ABBINGDON AFFILIATES, INC.
 Dept. TB, 2149 Utica Ave.
 Brooklyn, NY 1234
 (718) 258-8333

Circle No. 1



VICTORIAN WALLPAPERS

- Handprinted Borders, Friezes, Ceiling Papers & Coordinated Wall Fills.
- Available Directly from our Studio by Mail Order.
- In-house Design Service.
- Color Catalog with Binder: \$8.00

BRADBURY & BRADBURY WALLPAPERS
 P.O. BOX 155-L • BENICIA, CA. 94510
 (707) 746-1900

Circle No. 13



Everything for the Traditional Building.

Decorative Hardware ~ Plumbing Fixtures & Accessories
 Architectural Trims & Medallions

CATALOG \$2.00
 CONSULTANT AVAILABLE
Restoration Works Inc.

810 Main Street
 Buffalo, N.Y. 14202
 (716) 856-8000

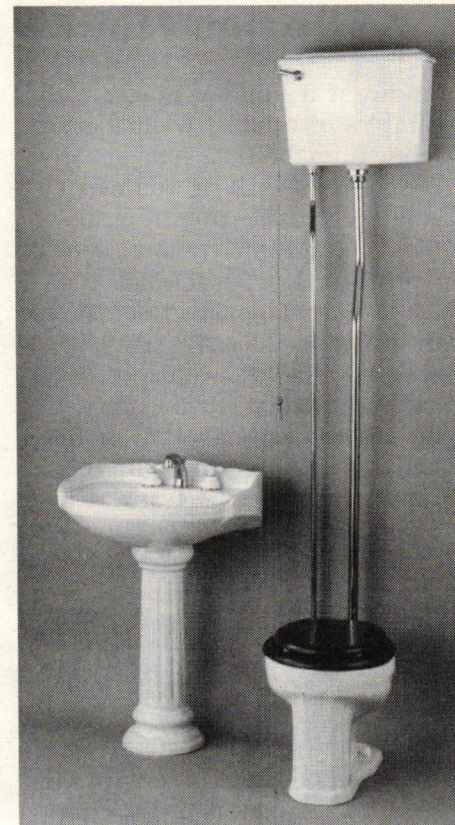
Circle No. 41

THIS TANK KEEPS ITS LID ON

You've seen high-tank toilets before, but Barclay's Victoria II Suite is a classic with a couple of features that make it unique. For one thing, the tank is fully glazed — that means underneath, as well. Second, the tank is lidded, which makes for less noisy flushing (also prevents splashing). All the hardware is polished brass. This water closet retails for \$785 (the oak seat is an additional \$65.)

Pictured with the closet is the Victoria Pedestal Lavatory, which features a non-splash rim and concealed overflow. It has 8" centers, is 25-1/2" wide, 20" deep, and 34" high. It's available in white for \$450 and in bone and silver for \$540 (retail prices). The Argenti faucet has a washerless ceramic disc cartridge (which doesn't wear out) and a forged brass body with a pop-up drain plug. It lists for \$340.

For more information, contact:
Barclay Products Ltd., 424 North Oakley Blvd., Dept. TB, Chicago, IL 60612 (312) 243-1444. CSI# 15400 — JL



Improving on the Originals



Ellen Kardell has improved the typical stained-glass window of the turn of the century. "Builders used to pick 'window A' from a catalog and stick it in all their houses, the way we do with refrigerators. I'm trying to create something that's a level above that."

Her stock windows, based on Aesthetic, Classical Revival, and Renaissance Revival patterns, differ from the originals in two ways: their designs are more intricate, and they include hand-blown European glass that was prohibitively expensive in the 19th century. "I can use American glass if someone wants an authentic piece, but I don't think it's as pretty."

There are 28 styles in all, ranging from \$290 to \$1260 (4 color combinations available.) There's also a line of cabinet panels, \$87 to \$286 each (min.: 4). She will do custom work.

Send \$3.50 for catalog to: **The Kardell Studio, 904 Westminister St. N.W., Dept. TB, Washington, DC 20001 (202) 462-4433. CSI# 08800 —EMK**

Aristocast Originals

Niches • Crown Moulding
 Trim • Fireplaces •
 Ceiling Medallions •
 Corbels • Archways •
 Columns • Porches •
 Oak Beams •

Buy at factory prices from
 the world's finest producer

ARISTOCAST ORIGINALS INC

Dept. TB, 6200 Highlands Parkway, S.E.
 Suite 1, Smyrna, GA 30082
 Tel. 404 333-9934-9935. Fax. 432-0232

Dealer and
 manufacturer's
 agent inquiries
 welcome

FREE 28 page full color catalogue

Circle No. 118

New! Protection for Your Slate Roof!

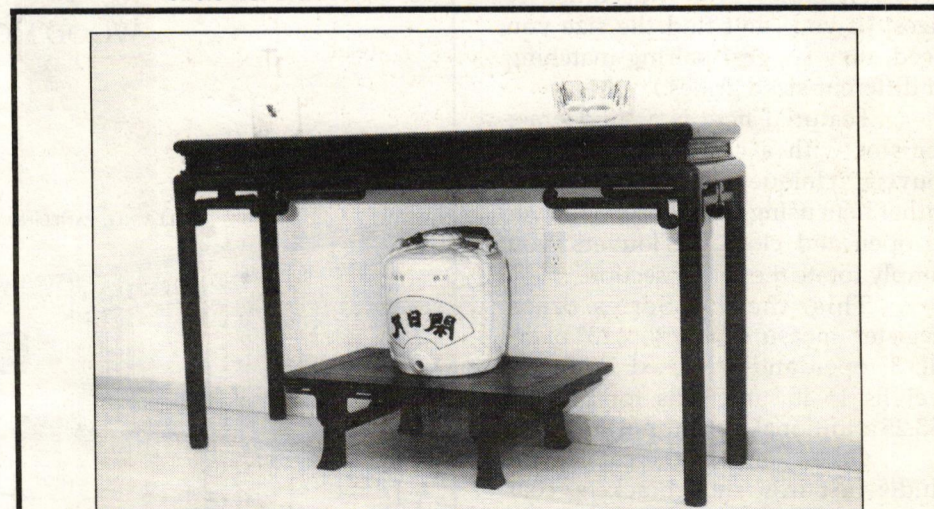


No need to take risks!
 Be sure that there is
 never any damage from
 snow or broken slates
 that slide off your roof!
 Cast bronze designs for
 durability.

Reasonable cost makes it an excellent investment. Fast installation. Get the facts! Send today for our free brochure!

**M.J. MULLANE CO., P.O. Box 108
 Hudson, MA 01749 508/568-0597**

Circle No. 33

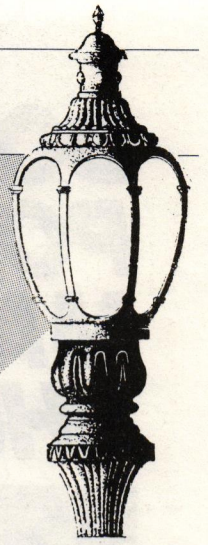


LIMITED EDITION CHINESE REPRODUCTIONS
 IN ROSEWOOD
 (CUSTOM DESIGNS EXECUTED)

Alexious Designs Associates 306 Lakes Road, Warwick, NY 10990 (914) 986-2815

special report

EXTERIOR HISTORICAL LIGHTING



BY MARYANN ONDOVCSIK

Our Special Report in the November/December issue concentrated on lighting fixtures for historic interiors. This time around, we're focusing on the exterior — including wall-mounted fixtures, freestanding streetlights, and street furniture.

Today, there's a wonderful variety of period-style exterior fixtures to choose from. Even manufacturers who specialize in high-tech contemporary lighting usually offer a small "historic" or "nostalgia" line. Unfortunately, some of these products are part of the same trend to hokey nostalgia that brought us "Ye Olde Fashionede" shopping malls and plastic mansard roofs.

On the other hand, there are some superb authentic reproductions available. The most interesting are the "product survivals" that aren't reproductions at all, but rather old-time products still being made by the original company on the original production equipment.

Selecting specific fixtures can be difficult, since it's less an aesthetic decision (you can get similar-looking fixtures from many suppliers) than a technical one, based on materials and construction. For example, it's imperative to read specs carefully, especially the measurements. Although two light fixtures may look identical in a color photograph, one may be cheaper because it's a scaled-down version, or the castings may be considerably thinner.

Materials Matter

Materials differ, too, and the best material depends on the situation. A condo complex for the elderly will not be as vulnerable to vandalism as a city playground. And streetlights installed along a quiet pedestrian walkway need not be as sturdy as lights that may have to face the impact of a speeding car. Even climate enters into the equation, as does weight, cost, and ease of installation.

FIBERGLASS: This material is lightweight, inexpensive, and can be painted to resemble cast iron or stone. It can be made into light posts that may be fine for use on private property.

But fiberglass can be impractical in public installations. Fiberglass light poles are not fireproof. "And they just don't last as long," says Morton

Kanter, vice president of Spring City Electrical Mfg. Co. "They are subject to vandalism and abrasion. If you've ever seen a kid go at one with a pocket knife, you'd know what I mean."

ALUMINUM: Because aluminum lights and poles are lighter than iron and steel equivalents, they are cheaper to ship and easier to install. "You don't need a large crew and they seldom require a crane," says Bruce Haines, president of Sternberg Lanterns. "Aluminum doesn't rust," he continues. "These poles can be painted any color — in the factory, not necessarily in the field — and a paint job lasts 5-10 years."

There is a negative side, however. "One problem with aluminum is electrolytic action," Kanter warns. "When salt hits aluminum, it produces a chemical reaction that corrodes the metal. Aluminum also transmits more vibration than cast iron, which can result in loosened fasteners and shorter life of the luminaires." Aluminum, however, can be fine in when kept clear of winter salt spreading, vibration, and seacoast environments.

CAST CONCRETE: Even topped with a period light fixture, a concrete pole does not look quite as "historic" as other materials. But there are advantages, starting with maintenance. Manufacturers claim the concrete surface is self-cleaning, won't discolor with age, nor require painting. And concrete is not subject to electrolytic action from deicing salt or corrosive atmosphere. The rigid construction of reinforced concrete poles prevents wind sway. Although some concrete poles seem a bit boxy, new polymer-concrete technology can now duplicate most of the detail of historic cast iron designs.

CAST IRON: This material is probably the favorite for historic lighting fixtures since it's the same material used a century ago. There are a number of advantages, starting with the aesthetics and the ability to do very fine decorative casting. It's still popular for fences, benches, fountains, and decorative planters. A cast iron light pole, is strong, impervious to most vandalism, and resistant to vibration and corrosion.

On the negative side, cast iron is brittle and will shatter if hit with enough impact. And its weight can be both a positive and negative factor. The weight of a cast-iron pole lends strength and vibration dampening, but may dictate the use of a crane for its installation.

Construction Details

ONE PIECE vs. COMPONENTS: Casting a light pole in one piece is obviously more authentic. Companies like Union Metal have been producing them from the same molds since the early 1900's. So, as Union's Ron Martino points out, "That guarantees that these fixtures are not scaled down replicas.

They are the real thing." One piece construction can be stronger, and avoids the flaws in assembly that can occur when components are put together in the field.

On the other hand, when a solid pole is cracked, the whole unit is trash. Component fixtures, made of replaceable parts, can be repaired. "When our poles are hit, the anchor bolts will probably shear off and the whole thing will come down in six pieces," says George D. Strom, president of Lamplight Industries. "The damaged segment can then be replaced. Most municipalities keep an inventory of items they need to mix and match." A component fixture can also be easier to install. Although the total weight can be considerable, the fixture can be installed (or segments replaced) by one person with a stepladder.

GLASS vs. PLASTIC GLOBES: Glass, obviously, is the most authentic. It's also the most breakable. "We still supply glass globes but don't recommend them," Strom says. "Unless it's a storybook town — without a vandalism problem — they just don't last."

The alternative is plastic, usually Lexan polycarbonate. The disadvantage is a degree of ultraviolet deterioration that will change the color over a period of 5-6 years. But most municipalities would rather change discolored plastic every few years than replace glass constantly.

As if all this weren't enough, specifiers should also look into the wiring and type of installation required. Is there an access door to reach the wiring? If corrosion is a problem, are the anchor bolts inside the base to protect them from exposure?

On UL Listings

The question of UL listing for exterior lighting is complex, which is why you won't find neat checkoff boxes on the SourceList.

To begin with, the suppliers listed here aren't easy to categorize. Some make only the lights — you buy your own poles. Some make only the poles — you buy your own lights. Some make both poles and lights. Others make one but sell the other for a complete package.

Obviously, companies that make only poles don't need a UL listing. Others claim that "some" or "most" of their fixtures are UL approved. And some small manufacturers that do a lot of hand assembly find they can't afford all the testing fees that UL certification requires.

The majority of companies point out that while all their wiring and components are UL approved, the completed fixture (especially if it's assembled on site) is not. If UL listing is critical because of your local codes, read the fine print in the product literature or call the manufacturer. ♦

Who's In This Special Report

There are two dozen lighting companies included in the SourceList on pp. 11 & 12. Our selection was based on: (1) appropriateness of design; (2) the company's reputation for product quality, and (3) availability of helpful product literature.

Some of these listed companies are advertisers in TRADITIONAL BUILDING — most are not. Even though we dearly love our advertisers, whether a company advertised or not had no bearing on its selection for the top 24.

The companies listed as Additional Suppliers on page 19 may be perfectly satisfactory vendors. Some of them offer fine products, but in a limited range of styles. In other cases, we simply couldn't get enough information to do a proper evaluation.

To Contact These Companies

Virtually all these suppliers provide product literature, ranging from a simple

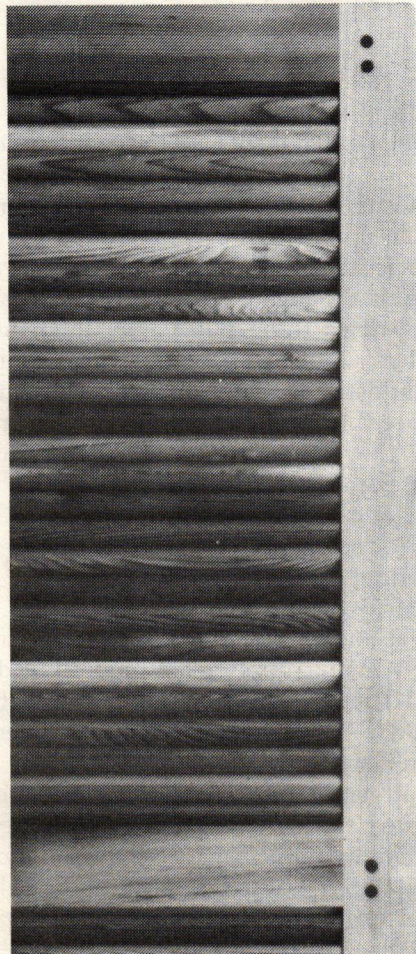
brochure to a hernia-inducing catalog. As explained in the SourceList, some literature is free. Other companies charge. And some send out a free brochure and then charge for a full catalog.

If your need for information is immediate, call or write these companies directly. We've provided all the contact information on the SourceList. (Please mention TRADITIONAL BUILDING.) And please note that when writing for free literature, the request should be on your company letterhead.

If you need catalogs simply to update your files, it may be more convenient to use the enclosed Product Information Card, or the coupon on page 21.

Coming Next: Historical Millwork

DOES THE WORD POLYSTYRENE MAKE YOU SHUDDER?



Don't compromise authenticity.

Using clear, old growth western red cedar, Vixen Hill crafts a shutter that outperforms pine and plastic in looks and life. Joints are mortise and tenon with teak locking pins. Both panels and louvers are of generous dimensions ensuring lasting beauty for generations.

For a detailed brochure featuring our 5 traditional styles in both standard and custom sizes contact:

Vixen Hill Mfg., Main Street
Elverson, Pennsylvania 19520
Telephone (215) 286-0909

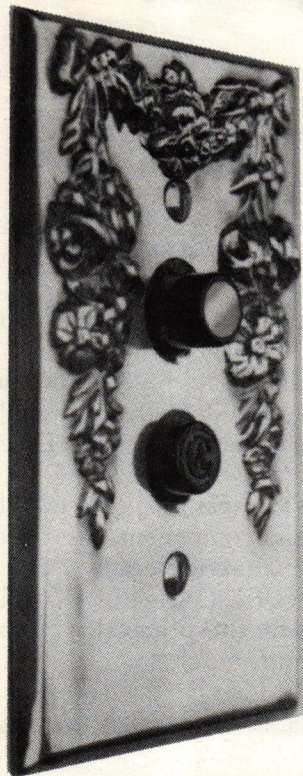


The Vixen Hill Cedar Shutter

The very last shutter you will ever need.

Circle No. 123

Push Button Light Switches



In
Single and Three Way
Solid Brass Cover Plates
Decorative and Plain

Also In

- Chrome
 - Brown
 - Ivory
- Finishes

For Color Brochure
Send \$1.00 to:

Classic Accents
Dept. TB P.O. Box 1181
Southgate, MI 48195

Circle No. 75

SOLID BRASS DUST CORNERS

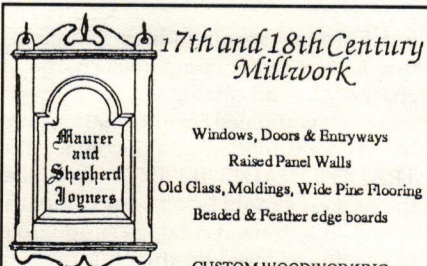


This revolutionary hardware development of the 1890's is now being authentically reproduced by Conant Custom Brass.

write for more information.

Conant Custom Brass
270 PINE STREET BURLINGTON, VERMONT 05401

Circle No. 62

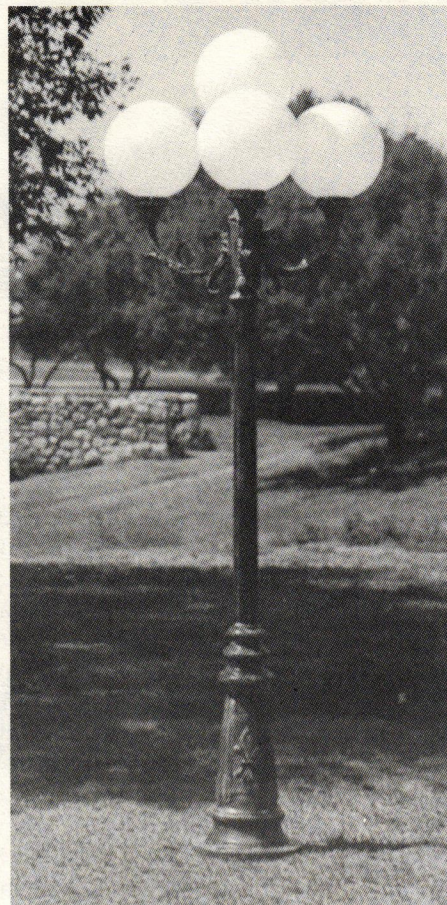


Windows, Doors & Entryways
Raised Panel Walls
Old Glass, Moldings, Wide Pine Flooring
Beaded & Feather edge boards

CUSTOM WOODWORKING

Maurer & Shepherd Joiners
122 Naubuc Avenue
Glastonbury, Connecticut 06033
(203) 633-2383

Circle No. 36



ALUMINUM CAST IN MANY VERSIONS

Pinecrest is best known for its specialty doors and decorative windows, but it also offers a line of street lights called The Nostalgia Collection. All are made of cast aluminum and can be ordered in black, dark green, chocolate brown, red, and antique beige. Most stem and crown designs are interchangeable.

The quad fixture shown below is a combination of the L-62 stem and CR-13 crown. The stem is available in 6-ft. to 10-ft. sizes and requires 4 globes with 4" necks. Ladder rests are available for most styles at extra charge.

Pinecrest also has a custom casting division that will exactly duplicate existing lighting fixtures.

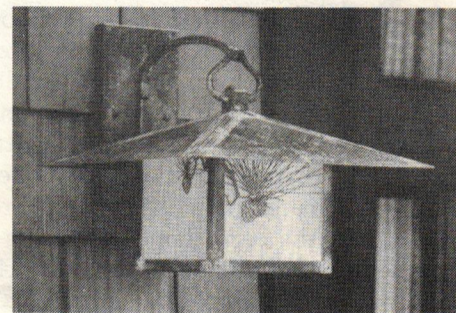
Lighting catalog free from:
**Pinecrest, 2118 Blaisdell Ave., Dept. TB,
Minneapolis, MN 55404 (612) 871-7071.
CSI# 16500 — MO**

A Craftsmanlike Approach

There is a notable lack of exterior Arts & Crafts-style fixtures, but Arroyo Craftsman specializes in them. This marvelous collection includes wall-mounted, post-mounted, and hanging fixtures. And while they are designed for outdoor use, many would also look handsome indoors.

The designs are all original, but take their inspiration from the Arts & Crafts Movement. Their elegant simplicity would work well with many architectural styles, from Spanish adobe and California bungalow to American Foursquare and other traditional settings.

All fixtures are solid brass, individually assembled and finished, with a verdigris patina. This example (MB12FP), called The Monterrey, is a wall-mounted lantern with a 4" x 8"



backplate. The body is 9-3/4" high, 5" wide, with a 12" roof width. The lantern has pine needle filagree and, including backplate, lists for \$357. The lantern can also hang; (identified as MO12PF) with 12" of 1" chain and a mounting bracket, it lists for \$320.

For more information about Arroyo Craftsman, see pullout SourceList in this section. — MO

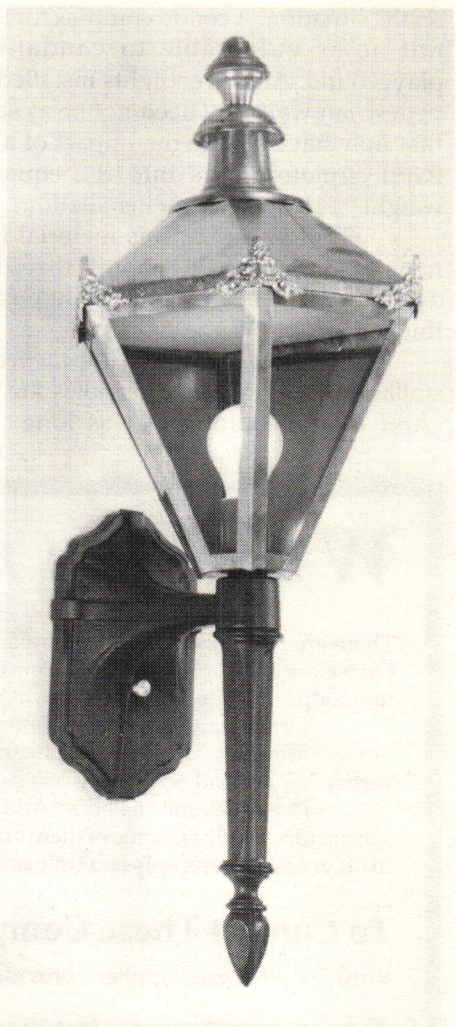
Custom Copper Work

It started as a hobby. Derek G. Ward began making decorative copper lanterns in his spare time. That avocation grew into a full-fledged business, and Ward Industries now produces an entire range of solid copper fixtures, including many large post-mounted exterior lanterns. But since the company is oriented to handwork, Ward Industries is also open to custom business and, in fact, has produced some mammoth fixtures that are not available off the shelf.

"Everything here is solid copper, 99.9% pure, which will last over 100 years," Mr. Ward says. "The Statue of Liberty, which is copper, just needed cleaning up after a century — not replacement." And for greater strength, all joints in Ward's lanterns are lapped, not butted.

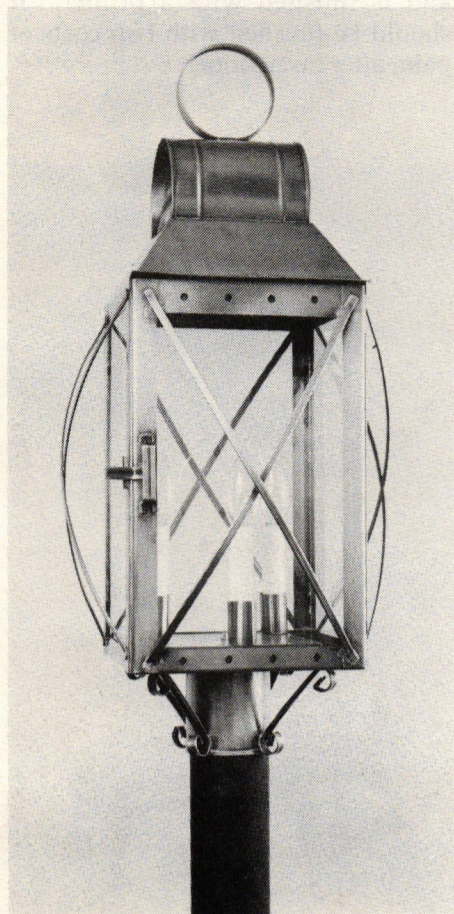
The firm offers several variations on its Chelsea design. This one, Chelsea 21-12, is a wall-mounted sconce that's available as shown for \$223 (including trade discount) — that includes 6 brass hood corners and a cast aluminum tail piece. Without those optional details, the lantern costs \$196 (including discount).

For more information about Ward Industries, see pullout SourceList in this section. — MO



MADE BY HAND TO YOUR SPECS

In an era of mass production, it's nice to find that true handcrafted lighting fixtures exist. "All these fixtures are cut, formed, soldered, and finished by hand, so no two are exactly alike," says



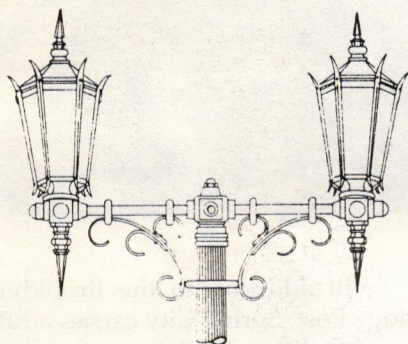
Karen Thompson, CEO of Josiah R. Coppersmythe. "And we're happy to modify our styles and quote prices on fixtures of your own design."

Crafted in New England, these 17th- and 18th-century designs are made of solid brass or copper (no plating is used); pewter-finish fixtures are manufactured from galvanized steel. All designs are available in natural brass or copper finishes, antique brass or copper, verde, or pewter.

Shown here is The Haverhill (1024P), 11" x 11" x 25", which sells for \$135-\$145, depending on finish. Although this lantern is shown post-mounted, posts are not included; the Haverhill also comes in a hanging style.

For more information about Josiah R. Coppersmythe, see pullout SourceList in this section. — MO

Double Standard



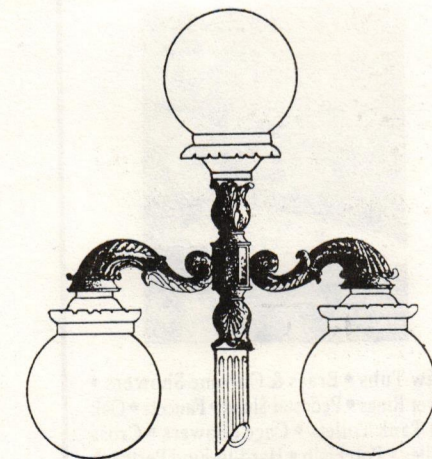
If one historic luminaire is good, two must be better. Lampco offers this design as a standard single and as a wall-mounted unit, as well as this standard double. It comes with base ring, bell, lower casting, and pole. The fluted aluminum poles are made with a cast iron base and are reinforced with three full-length rods. You can choose from a variety of standard painted

finishes, unfinished aluminum alloy, or cast bronze, with Pebbelex glass or Lexan plastic in the luminaire.

For more information about Lampco, Inc., see pullout SourceList in this section. — MO

TRIPLE HEADER

The one-up/two-down configuration of this fixture is reminiscent of the turn-of-the-century interior fixtures that used both gas and electricity. This exterior fixture is all electricity, of course, but it's an interesting arrange-



ment after all those "balloon" designs. This illustration shows the curved arms from Western Lighting. Actual arm measurements are 18" d and 28" w, plus the measurement of the globes. Arms are aluminum; globes

are white polycarbonate.

For more information on Western Lighting Standards, see pullout SourceList in this section. — MO

Protect Wall Corners The Great Old-fashioned Way

Our unfinished **Cornerbeads** compliment any period or decor. They're among hundreds of hard-to-find, "old style" items we have to enhance your old house or capture a bit of the past in your newer home. Each cornerbead is 47 1/2" x 1 1/4" dia., with 90° notch.

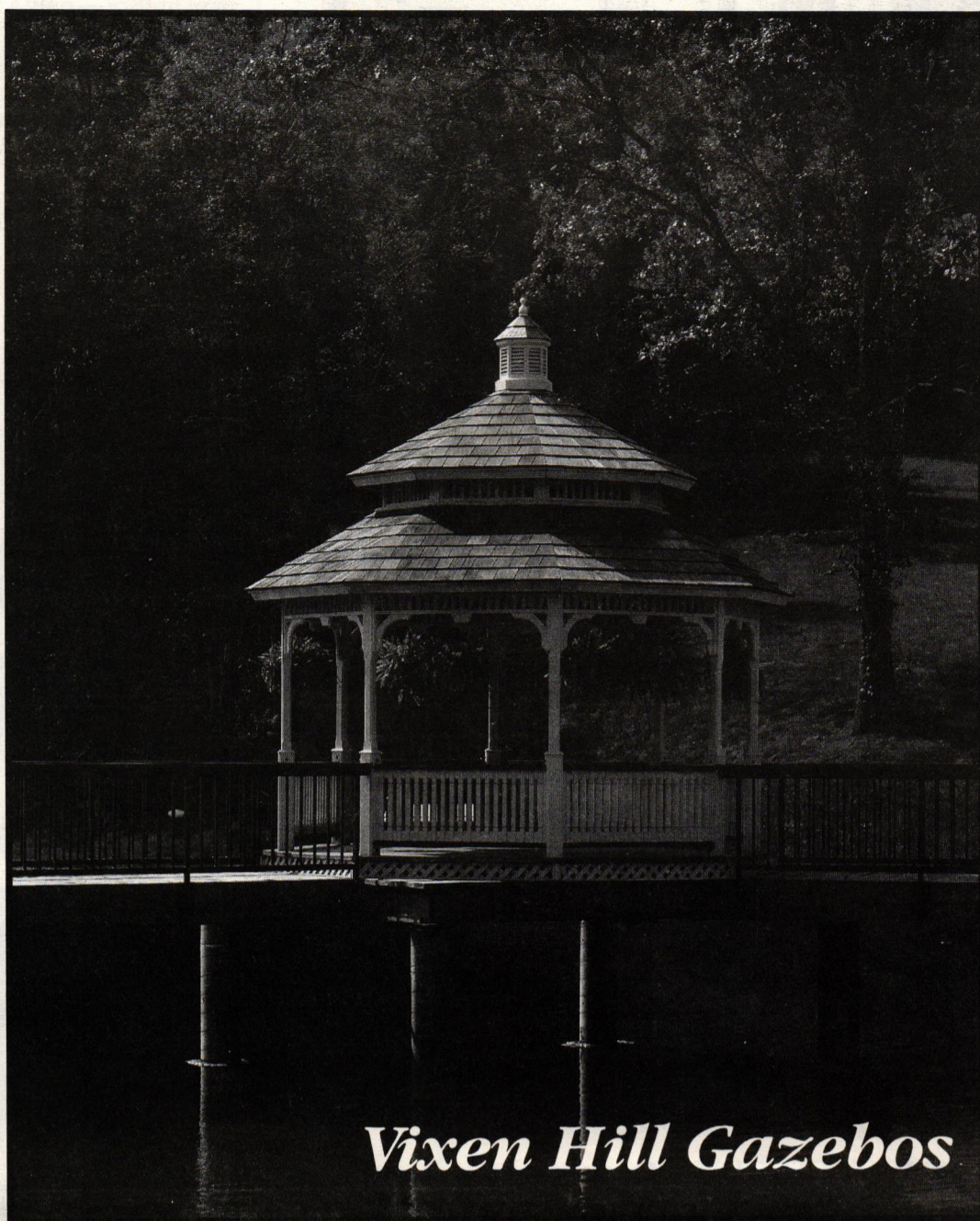
Beechwood. Ea. \$9.75; 6 or more \$8.75.
Oak. Each \$13.50; 6 or more \$12.00. Add freight: \$2.50 (1-5); \$6.50 (6 or more). WI residents add 5% tax. VISA/MC, or AMEX accepted.

To Order Call TOLL-FREE
1-800-556-7878
In Wis.: 414/542-0685
Or, send for more information.

Crawford's Old House Store

550 Elizabeth St. • Rm. 21 • Waukesha, WI 53186
Dealer Inquiries Invited

Circle No. 22



Vixen Hill Gazebos

Evaluated . . . Specified . . . Remembered

As a design professional, you know that the quality of site furnishings you specify reflects upon you, your firm, and your reputation. That's why Vixen Hill Gazebos are favored by Landscape Architects all across North America.

Vixen Hill Gazebos are artistically balanced and skillfully constructed of the finest materials available. We've redefined the state of pre-engineering to eliminate the guesswork and provide ease of installation at any point of development. Regardless of contractor, you're guaranteed lasting project integrity.

Specify with confidence. For a complete brochure contact: Vixen Hill Manufacturing Company, Dept. L-7, Main St., Elverson, PA 19520. 215-286-0909



Circle No. 122

Otto Wendt & Co.

Seasons Bench \$135.00
Federal Bench \$135.00
*Prices Are For Cast Parts Only
Scroll Bench \$95.00
San Francisco Bench \$95.00
Swan Fountain \$525.00
Roman Urn \$195.00
Victorian Urn \$195.00
Victorian Mailbox \$145.00

Cast aluminum products for Commercial and Residential projects. Street Lights, Park Benches, Fountains, Mail Boxes, Patio Sets Urns, and Plant Stands.

Otto Wendt & Co.
(IN OLD TOWN SPRING)
417 A GENTRY SPRING, TEXAS 77373
(713) 288-8295

Standard Street Light \$345.00
Globes \$12.00 each

*Prices Are For Cast Parts Only

Brochure \$1.00

BRIDGE TO THE PAST

Thomas Edison invented the electric light in 1879 — only a few years before the Brooklyn Bridge was opened in 1883. This beautiful suspension bridge, which connects the boroughs of Brooklyn and Manhattan, was the first bridge to be electrically illuminated.

Originally, carbon lights had been used, which accounts for the chimney on the luminaire. The handgrips on the post served as steps so the carbon electrodes could be replaced and the globe cleaned.

Naturally, those lights were eventually replaced with new and "improved" versions. But for the 1983

Like all Spring City fixtures, this is cast from heavy-duty cast iron and is finished with a primer. It should be finished with two coats of paint after installation.



BENCH MANUFACTURING CO. specializes in the Design of Quality and Innovative Products such as Custom-Lettered Medallion Benches as well as Stock Benches, Picnic Tables, Garden Buildings, Turn Of The Century Clocks, Trash Receptacles, Sculptures, Fountains and Light Poles.

Call or write for our Catalog:

BENCH MANUFACTURING Co.

P. O. Box 158 • Concord, Mass. 01742 • (508) 371-3080

Circle No. 10

VICTORIAN AND TURN OF THE CENTURY
Chandeliers, Sconces & Fixtures

Design • Contract • Manufacturer • Restoration
• Replacement Parts & Glass Shades

THE MOST COMPLETE SOURCE FOR ANTIQUE AND REPRODUCTION GAS, OIL AND ELECTRIC LIGHTING

Lighting Catalog \$4.00

THE FINEST LAMP & FIXTURE RESTORATION AVAILABLE

ANTIQUE BRASS SHOWERS & FIXTURES

• Claw Tubs • Brass & Chrome Showers • Shower Rings • Pedestal Sinks • Faucets • Oak High Tank Toilets • Cage Showers • Cross Handles • Porcelain • Hard-to-Find Parts • A Huge Selection of Accessories • Expert Advice

Plumbing Catalog \$5.00

ROY ELECTRIC CO., INC. (718) 434-7002
SHOWROOM: 1054 Coney Island Ave., Brooklyn, NY 11230

Circle No. 43

celebration of the Brooklyn Bridge centennial, the city wanted replicas of the originals and turned to Spring City Electrical Mfg. Co.

"We found sketches of the original in the archives of Con Edison," says Spring City V.P. Morton Kanter. "We also found a lithograph of President Chester A. Arthur leading a parade across the bridge clearly showing the original fixtures."

This new Brooklyn fixture was reproduced from those drawings and is 10 ft. high (excluding luminaire) on

In addition to the Brooklyn Bridge Post, Spring City carries a full line of traditional lighting posts, post adaptations (parking meter brackets, special arms for signs, fixture brackets, support for clocks, banner arms), drinking fountains, ornamental columns for bandstands, and several styles of bollards that can be used alone or with posts of the same name and design.

For more information about Spring City, see pullout SourceList in this section. — MO

HISTORICAL EXTERIOR LIGHTING REPRODUCTIONS SourceList

CS# 16500

❖ COMPILED BY MARYANN ONDOVCSIK

Company	Specialty	Literature	Lanterns & Wall-Mounted Fixtures	Complete Street Lights	Poles Only	S T Y L E S A V A I L A B L E			Garden Lights	Street Furniture
						Early American	Victorian	Turn of Century		
Advanced Materials Inc. 454-2 Main St. - Dept. TB P.O. Box 917 Deep River, CT 06417 (203) 526-9755	Produces new type of component poles using polymer concrete technology to duplicate existing cast-iron bases, then combines with fiberglass poles.	Catalog free with letterhead request. Circle No. 54		*	*			*		
Arroyo Craftsman 2080-B Central Ave. - Dept. TB Duarte, CA 91010 (818) 359-3298	One of the few suppliers of exterior mission-style fixtures inspired by the Arts & Crafts Movement. Offers solid brass interior & exterior fixtures; wall-mounted & hanging styles.	Send \$2 for catalog.	*		*			*		*
Bench Manufacturing Co. P.O. Box 158 - Dept. TB Concord, MA (508) 371-3080	One of the largest manufacturers of cast-iron benches, trash receptacles, clocks & light poles.	Catalog free with letterhead request. Circle No. 10			*			*		*
Classic Lamp Posts 3645 NW 67th St. - Dept. TB Miami, FL 33147 (305) 696-1901 & (800) 654-5852	Supplier of Plysteel lampposts (3-part composite linear low density polyethylene (LLDP), structural polyurethane closed foam & steel pipe) impervious to elements & made into variety of poles & sconces, plus bollards.	Catalog free with letterhead request. Circle No. 95	*		*			*		*
Gasflo Box 1, 4 State Street - Dept. TB Marblehead, MA 01945 (617) 631-4280	Produces traditional pole lights, poles, & wall-mounted fixtures. Best known for Mantelife, which simulates gas mantle in electrical fixture.	Catalog free with letterhead request. Circle No. 96	*	*				*		
Great Lakes Concrete Products Box 157 - Dept. TB Menomonee Falls, WI 53051 (414) 251-3010	Has been making pre-stressed, centrifugally cast concrete light poles for 50 years.	Catalog free with letterhead request. Circle No. 97			*					
Hadco P.O. Box 128 - Dept. TB 100 Craftway Littlestown, PA 17340 (717) 359-7131	Has an enormous range of lighting fixtures from traditional to contemporary, plus poles, garden lights & bollards.	Catalog free with letterhead request. Circle No. 98	*	*	*			*		*
Hanover Lantern A Division of Hoffman Products 470 High St. - Dept. TB Hanover, PA 17331 (717) 632-6464	Large commercial lighting operation, supplies full range of exterior lighting fixtures, pole lights, etc., ranging from historic to contemporary. Also, nice range of garden lights.	Catalog free with letterhead request. Circle No. 99	*	*				*		
Josiah R. Coppesmythe 80 Stiles Road - Dept. TB Boylston, MA 01505 (508) 869-2769	A source for handcrafted Early American lighting fixtures in natural brass & copper, primarily hanging & wall mounted styles. Some post lanterns but no poles.	Send \$2 for catalog.	*					*		
Lampco, Inc. 2214 Denison Ave. - Dept. TB Cleveland, OH 44109 (216) 351-9110	Standard & custom lanterns in cast aluminum or bronze. Fluted metal poles have cast-iron base, reinforced with 3 full-length rods inside.	Catalog free with letterhead request. Circle No. 100	*	*				*		
Lampflight Industries Inc. 135 Yorkshire Court - Dept. TB Elyria, OH 44035 (216) 365-4954	Produces cast iron light poles made of 6 component pieces, offering a virtual "custom" look. If one part is damaged, the whole pole need not be replaced — just the section. Can be topped with one of 5 luminaires.	Send \$3 for 8-page catalog.		*				*		
Newstamp Lighting Co. 227 Bay Road - Dept. TB North Easton, MA 02356 (508) 238-7071	Range of Early American lighting, interior & exterior, specializing in lanterns & coach lights. Large volume of custom work; all fixtures UL-approved. Makes high-pressure sodium lights in traditional designs.	Color catalog free with letterhead request. Circle No. 80	*	*				*		*

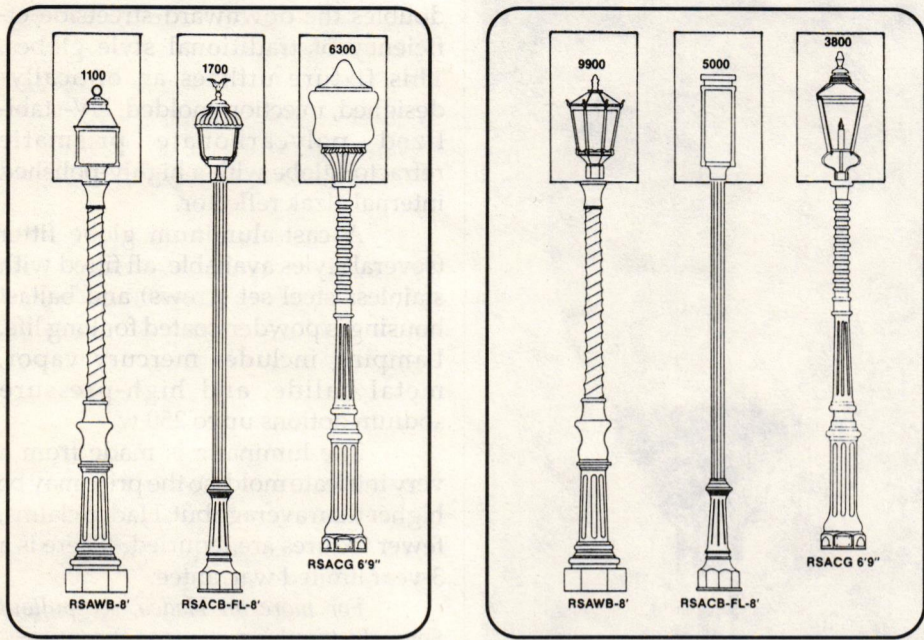
HISTORICAL EXTERIOR LIGHTING REPRODUCTIONS SourceList

CSI# 16500

❖ COMPILED BY MARYANN ONDOVCSIK

Company	Specialty	Literature	Lanterns & Wall-Mounted Fixtures	Complete Street Lights	Poles Only	S T Y L E S			Garden Lights	Street Furniture
						Early American	Victorian	Turn of Century		
Niland Company 7241 Stiles - Dept. TB El Paso, TX 79916 (915) 779-1405	Large variety of cast-aluminum poles topped with many kinds of luminaires; mix & match. Also, extensive collection of sconces, & street furnishings including benches, fountains, & urns.	Catalog free with letterhead request. Circle No. 101	✕	✕		✕	✕		✕	
Otto Wendt & Co. 417-A Gentry - Dept. TB Spring, TX 77373 (713) 288-8295	Extensive range of historical products reproduced in cast aluminum, including light posts & luminaires, benches, hitching posts, fountains, urns, & lavabos.	Send \$1 for catalog.	✕	✕		✕	✕		✕	
Sentry Electric Corporation 185 Buffalo Ave. - Dept. TB Freeport, NY 11520 (516) 397-4660	Offers a variety of poles in both cast iron & aluminum, plus selection of luminaires, including an art deco styles.	Catalog free with letterhead request. Circle No. 102	✕	✕	✕	✕	✕			
Spring City Electrical P.O. Drawer A - Dept. TB Spring City, PA 19475 (215) 948-4000	Produces high-end cast iron light poles, but sells complete fixture. Astounding range of styles & periods, plus sign poles, clock supports, & bollards.	Catalog free with letterhead request. Circle No. 103		✕	✕	✕	✕		✕	
Sternberg Lanterns Inc. 5801 N. Tripp St. - Dept. TB Chicago, IL 60646 (312) 252-8200	Specialty is historic streetlights & offers a large variety of styles; various luminaires on aluminum poles, plus matching wall-mounted fixtures & bollards.	Catalog free with letterhead request. Circle No. 104	✕	✕		✕	✕		✕	
TrimbleHouse 4658 Old Peachtree Rd. - Dept. TB Norcross, GA 30071 (404) 448-1972	Offers a full variety of aluminum poles, bases, accessories & luminaires. Mix & match for a custom look.	Catalog free with letterhead request. Circle No. 105	✕	✕	✕	✕	✕			
Union Metal Corp. 1022 9th St. SW - Dept. TB P.O. Box 9920 Canton, OH 44711 (216) 456-7653	Although luminaires are available, Union Metal specializes in cast-iron poles, made from the same molds it's been using since 1906. Also small selection of concrete poles.	Catalog free with letterhead request. Circle No. 106		✕	✕	✕	✕			
VISCO 29579 Aubrey Lane - Dept. TB Eugene, OR 97402 (503) 688-7741	Valley Iron & Steel Company (VISCO) produces high-quality poles & luminaires in the traditional design. Also available are: bollards, drinking fountains, traffic & pedestrian signals & parking meter bases.	Catalog free with letterhead request. Circle No. 107	✕	✕	✕	✕	✕		✕	
Ward Industries 14128 Bonnie Court - Dept. TB Middlebury, IN 46540 (219) 825-2548	Specializes in handcrafted, custom built copper fixtures & posts, with emphasis on Early American designs. Willing to do unusual custom orders.	Catalog free with letterhead request. Circle No. 108	✕	✕		✕	✕			
Washington Copper Works 49 South Street - Dept. TB Washington, CT 06793 (203) 868-7527	Specializes in handcrafted copper lighting fixtures, both interior & exterior. Emphasis is on Early American styling although it does have two Arts & Crafts fixtures.	Send \$3 for catalog.				✕	✕			
Welsbach Division of RWL Corporation 240 Sargent Drive - Dept. TB New Haven, CT 06511 (203) 789-1710	Offers a full range of cast iron, aluminum & steel poles plus brackets & bollards & good selection of traditional luminaires. Also one bench.	Catalog free with letterhead request. Circle No. 109		✕		✕	✕		✕	
Western Lighting Standards 18060 Euclid - Dept. TB Fountain Valley, CA 92708 (714) 549-0650	Catalog contains line drawings of every possible cast aluminum pole, luminaire, arm & scroll imaginable for mix & match. Also, bollards & pier base mounts.	Catalog free with letterhead request. Circle No. 110		✕	✕	✕	✕		✕	

DESIGN YOUR OWN LIGHT POST

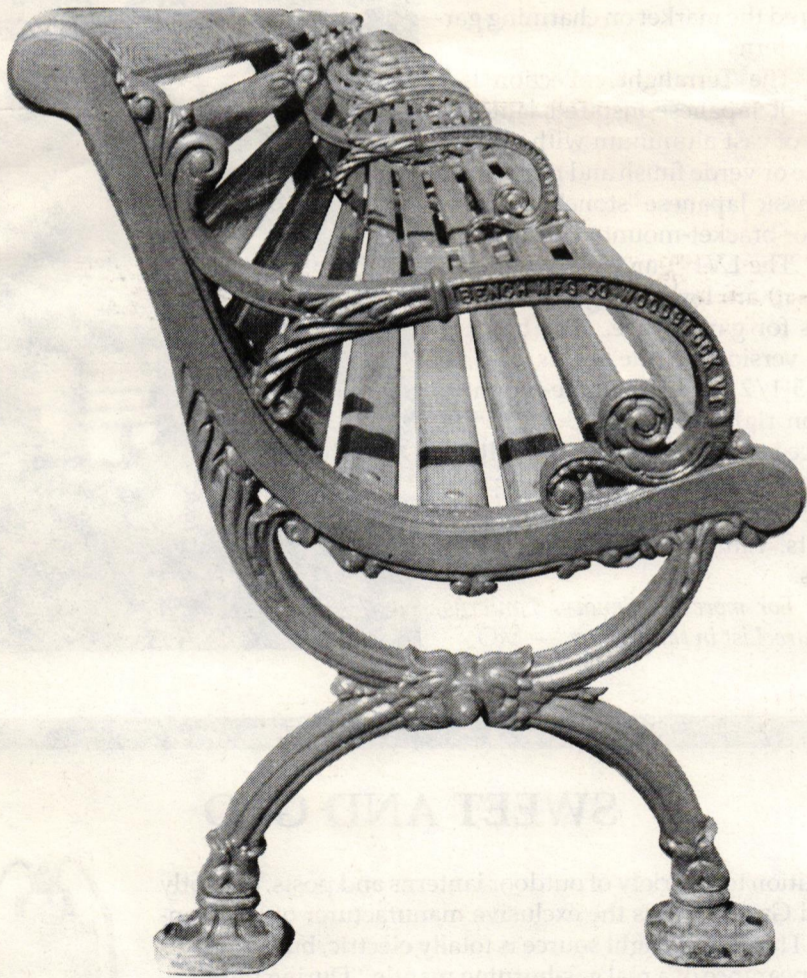


Like a number of other manufacturers, TrimbleHouse offers interchangeable components in its product line. To make it simpler to visualize how the various "mix and match" combinations will look, TrimbleHouse offers this Traditional Lighting Selector (14 posts and 18 luminaires in all) ...sort of a cross between a slide rule and Mr. Potato Head.

All the authentic 18th- and 19th-century styles shown on the selector are made of cast aluminum. Lanterns are UL listed, and are available with impact-resistant acrylic or polycarbonate globes. Poles range from 8 ft. to 18 ft. high.

For more information about TrimbleHouse, see special pullout SourceList in this section. — MO

Your Own Monogrammed Bench



Whether you want a single bench for your garden, or 100 for Main Street, the custom-lettered cast-iron Victorian bench from Bench Manufacturing Co. has undeniable appeal. A name and date in a heavy iron casting carries a comforting sense of permanence.

Up to 32 letters can be accommodated on the end panels of the bench. Each letter is 5/8" high, with 1/8" relief.

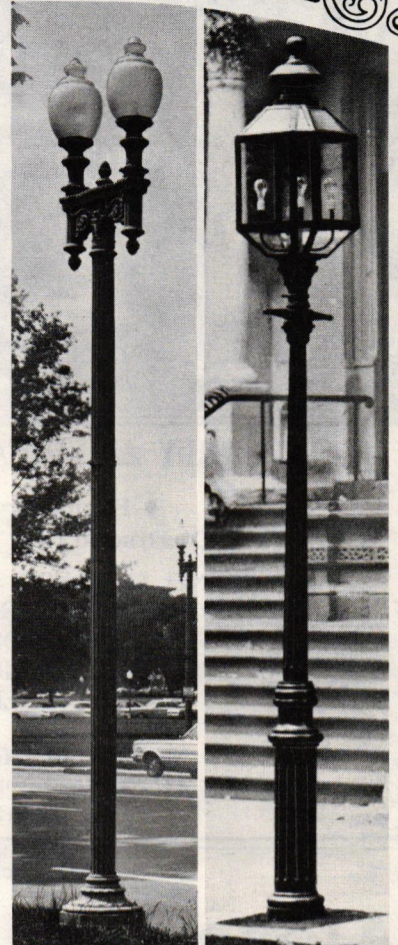
The B-76 Victorian Bench comes in 4-, 6-, and 8-ft. lengths. It's available with or without custom lettering. Each bench has heavy-duty wood slats and iron castings that are

carefully machine and hand-finished. Price of a single 6-ft. bench with 32 letters is about \$635; volume discounts are available.

Bench Mfg. produces many other benches, in both cast iron and cast aluminum, that can be custom-lettered. They range in price from around \$500 to \$750. Bench also makes a wide range of other street furniture, including clocks, trash receptacles, light poles, bollards, planters, and garden buildings.

For more information about Bench Manufacturing, see pullout SourceList in this section. — CL

Enhance the beauty of your landscape with the elegance of superbly crafted lighting posts by Spring City



You will be in good company when you light the way with our historically accurate, heavy duty, Cast Iron lighting posts. Independence Hall in Philadelphia, for example; the U.S. Military Academy at West Point; Boston Common and William and Mary College in Williamsburg to name just a few of the thousands of locations where these lighting posts are prominent.

The light sources available are: incandescent, mercury vapor, metal halide or high pressure sodium.

Write or call for further information and literature that will illustrate and describe why we are the leading manufacturer of ornamental lighting posts in the United States.

WASHINGTON-TWIN
- Capitol Area, Washington, D.C. 10'8" to 17'8" heights (excluding luminaires), 17" O.D. to 25" octagonal bases. Available with four luminaires.

HANCOCK
- Boston, Mass. 9' to 13' heights (excluding luminaire) with 10 1/2" O.D. base. Available as a 46" high bollard.

Spring City ELECTRICAL MFG. CO.

P.O. Drawer A, Spring City, PA 19475

Phone: (215) 948-4000

Circle No. 103

Hand-Crafted Copper Lanterns



Catalogue three dollars, refundable with order.

*The Washington Copper Works
49 South Street
Washington, Connecticut 06793*

Joshua
J.R. Coppersmythe

Hand Crafted
Early American
Lighting Fixtures

1033p - 25" high
POSTLIGHT
\$145⁰⁰

75 Other Styles
Five Finishes
Catalog \$2.00

508 • 869 • 2769
80 STILES RD., BOYLSTON, MA 01505



AUTHENTIC DESIGNS
The Mill Road
West Rupert, Vermont 05776-0011
Tel (802) 394-7713



Circle No. 6

EARLY AMERICAN ONION LANTERNS

- For indoor or outdoor use
- Constructed from Solid Copper & Brass

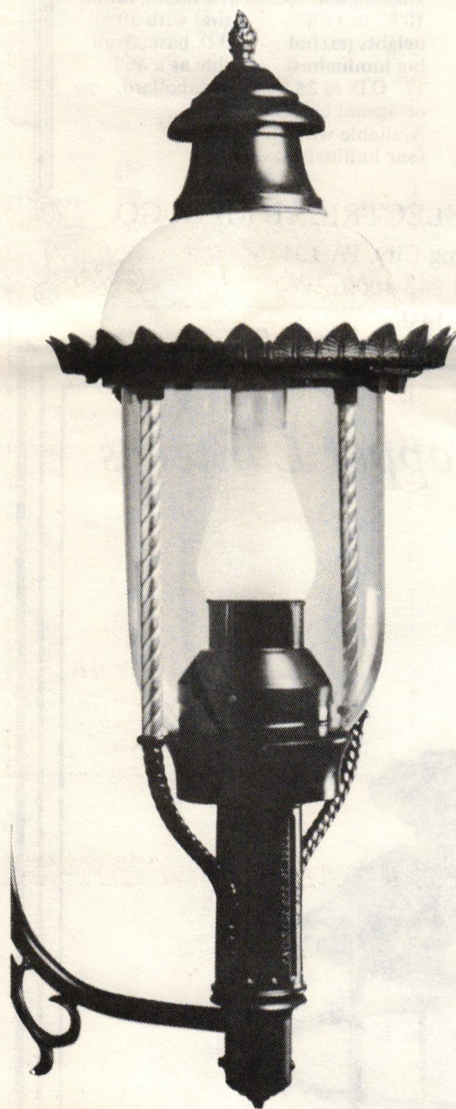
SEND \$2.00 FOR COLOR CATALOG
SHOWING NUMEROUS MODELS AND
STYLES OF POST LANTERNS,
WALL LANTERNS, SCONCES,
CHANDELIERS, ETC.

NEWSTAMP LIGHTING COMPANY
227 Bay Road, North Easton, MA 02356
(508) 238-7071




Established 1939
Circle No. 80

Along The Boulevard



Established in 1877, Welsbach has been producing exterior lighting fixtures for over a century. The Welsbach catalog is an encyclopedia of historical styles, starting with Colonial, moving on to Victorian, Continental, and Classical, before ending with Contemporary.

This example, known as Boulevard (Model 36), is an original design dating back to the 1890's. It's shown here mounted as an exterior sconce, but the same design can be pole mounted. The Boulevard is 41" tall, 18" wide and is made of cast aluminum with high-impact DR Acrylic or Polycarbonate globe. Welsbach offers a variety of poles in aluminum, steel and cast iron.

For more on Welsbach, see pullout SourceList in this section. — MO

DEVOTED TO EARLY AMERICAN

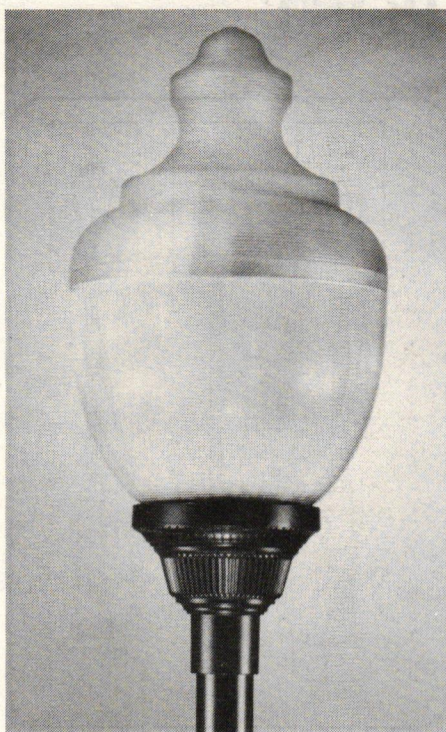
While many suppliers in this section are lighting fixture manufacturers that offer a variety of traditional styles, Historic Hardware, Ltd., takes a different approach. This company concentrates on the Colonial period and offers a variety of handcrafted hardware items including door latches, many types of hinges, and fireplace accessories.



But there is also a selection of interior and exterior lighting, including a series of postlights. This one, called the English Street Light, comes in small, medium, and large sizes and costs from \$405 to \$480 depending on size. It's available in a choice of three finishes: brass, copper, or verde.

For more information on Historic Hardware, Ltd., see the pullout SourceList in this section. — MO

Efficiency And Classic Design



Hadco introduces the Victorian II, a type-III distribution luminaire that minimizes upward light and nearly doubles the downward streetside efficiency of traditional style globes. This fixture utilizes an optically-designed, injection-molded, UV-stabilized polycarbonate prismatic refractor globe with a highly-polished internal alzak reflector.

A cast-aluminum globe fitter (several styles available, all fitted with stainless steel set screws) and ballast housing is powder-coated for long life. Lamping includes mercury vapor, metal halide, and high-pressure sodium options up to 250 w.

The luminaire is made from a very intricate mold, so the price may be higher than average but, Hadco claims, fewer fixtures are required. There is a 3-year limited warrantee.

For more on Hadco, see pullout SourceList in this section. — JL

ORIENTAL DE-LIGHT

Most garden lights are limited to rather ugly contemporary designs — primarily mushrooms and spotlights. A happy exception is the Terralight collection from Hanover Lanterns. Although their catalog is filled with the conventional coach and post lights, Hanover seems to have cornered the market on charming garden lanterns.

The Terralight collection is a series of Japanese-inspired lanterns, made of cast aluminum with either a bronze or verde finish and range from the classic Japanese "stone" lantern to pole- or bracket-mounted designs.

The LV191 and LV190 models ((shown) are low-voltage fixtures on spikes for garden use. The bracket-hung version on the left is 32-1/4" high, 5-1/2" wide; the pole-mounted version, right, is 38" high, 5-1/2" wide. As accessories for its low-voltage lanterns, Hanover offers a full package of 12-v. transformers, conversion sockets, railing clamps, and 24-hr. timers.

For more on Hanover Lanterns, see SourceList in this section. — MO

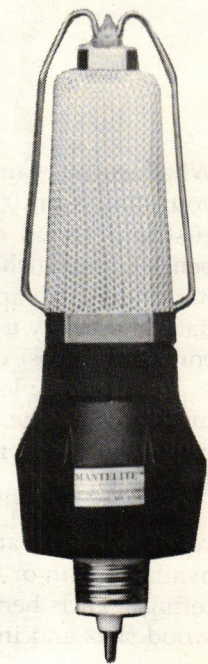


SWEET AND GLO

In addition to a variety of outdoor lanterns and posts, the aptly named Gasglo Inc. is the exclusive manufacturer of the Mantelite. This unique light source is totally electric, but simulates the appearance of a real gas-burning mantle. "During the energy shortage, many people were forced to stop using gas lanterns. Our product was designed to satisfy the need for conversion," says John J. Zwald, president of Gasglo. The energy crisis is over — for now — but the cost of gas in some areas is still high, and workers who can service gas lamps are in short supply. So Mantelite is the answer for those who like the look of gas but the practicality of electricity.

The Mantelite is UL-approved, screws into any standard bulb socket (as long as the lantern clears the mantle; it's 6-1/2" high — an 8" cage is recommended) and is claimed to last 10,000 hours — 10 times longer than the average bulb. The device is 90% less expensive to operate than a gas mantle, and uses an average of 85% less energy than regular bulbs. It's guaranteed for one year and replacements are available from the company.

For more about Gasglo Inc., see pullout Exterior Lighting SourceList in this section. — MO



CANDY CANES FOR GIANTS

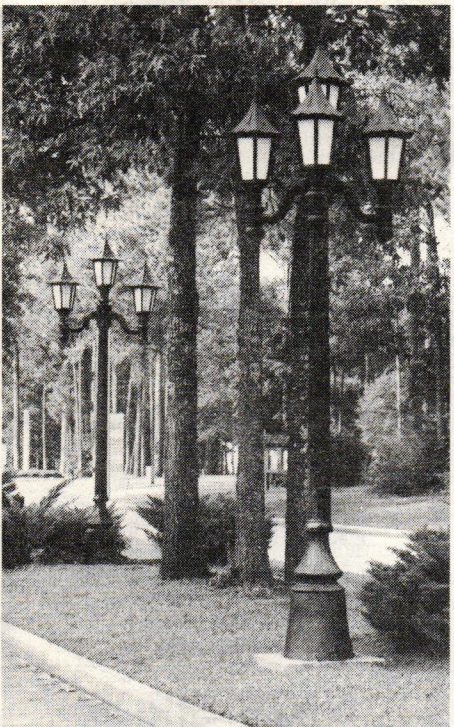
Candy cane light posts, once the standard fixtures for railroad stations, are making a comeback — especially at restored train depots.



This one, by Sternberg Lanterns, was specified by the City of Lake Forest to meet historic requirements for its depot restoration. Officially named the RLM18 with 1910 Acorn, this 14-ft. candy cane post has an ornamental base, black finish, and meets DOT regulations. It's being used on docks and marinas as well and may be specified with a variety of shades and globes.

For more information on Sternberg Lanterns, see pullout SourceList in this section. — MO

Dutch Treat



Otto Wendt & Co. offers an entire range of Victorian "cast iron" — but made in modern-day aluminum. Their line includes fountains, mailboxes, benches, carousel horses, urns, and lavabos, as well as street lights.

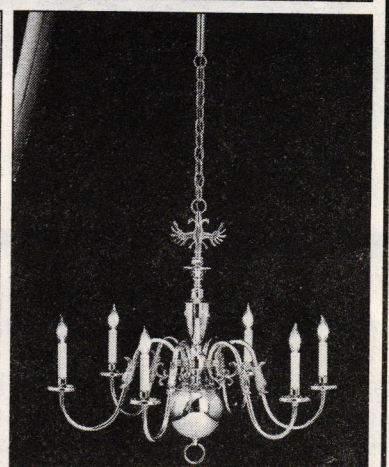
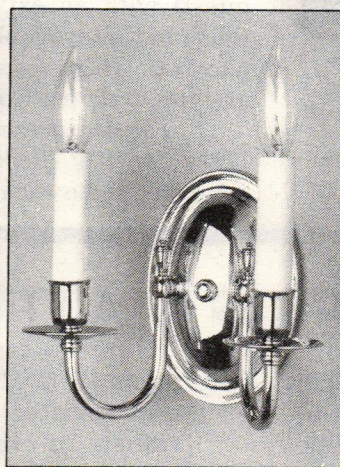
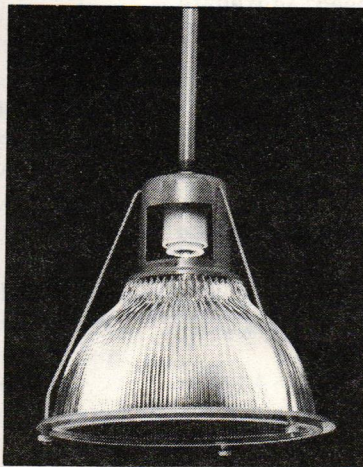
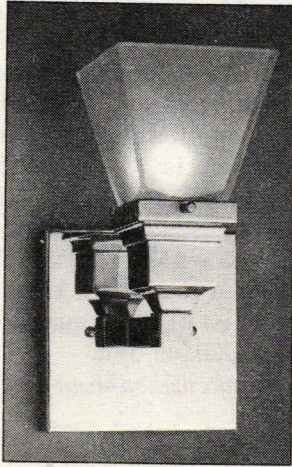
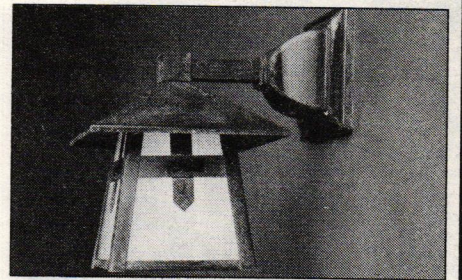
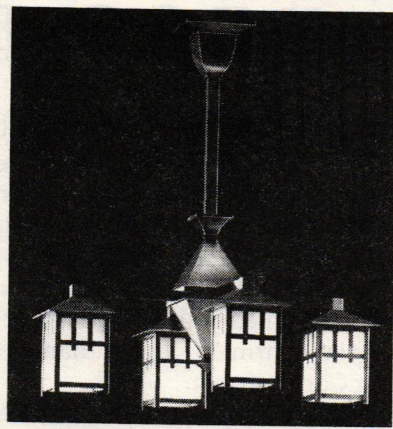
In addition to standard single-light styles, there are several multi-globe designs, including this one, called Tall Holland (which stands 13 ft. high). Inspired by traditional Dutch fixtures, this light post is available with either three or four luminaires and costs \$650, plus crating.

For more information about Otto Wendt, see special pullout SourceList in this section. — MO

Historic Lighting for Today

Fine authentic design & craftsmanship.
Residential/Commercial

Brass Light Gallery
719 S. 5th Street
Milwaukee, WI 53204
(414) 383-0675



Circle No. 14

Classic Elegance
THE CENTRAL PARK POST

In 1910, Henry Bacon, designer of the Lincoln Memorial in Washington, DC., was selected by The City of New York to design a lamp post to carry the first outdoor electric lighting in Central Park.

Bacon designed a post to blend with the plants and bushes growing in the park. Garlands of leaves, buds and stems can be seen on the post and a suggestion of upward growth thrust is apparent in the design of the central stem. It is considered to be the most beautiful of classic posts.

Advanced Materials, Inc. has made molds from Bacon's original design and now makes available to architects, builders, developers and to the general public an exact replication of this lovely post in cast iron. The Central Park Post is eminently suitable for use in office and mall surroundings and lends dignity and status to the approaches to private homes, condominiums and estates.

The two-piece design makes the post easy to erect and substantially reduces replacement cost should either part be damaged. Post heights range from nine feet to twelve feet, six inches.

AMI WELCOMES YOUR INQUIRIES.

AMI ADVANCED MATERIALS, INC.
454-2 Main St., PO Box 917, Deep River, CT 06417
(203) 526-9755 ■ (203) 526-5131 ■ Telex: 62648040

Circle No. 7

UL Listed

#8100-3
Shade
S184-4
S152-3

Quality & Elegance
like the originals
Affordably Priced

*Victorian Reproduction
Lighting Company*

P.O. Box 579 • (612) 338-3636
Minneapolis, MN 55458
(Wholesale to Trade)
Manufacturers of Lighting
Since 1977
Catalog \$4.00

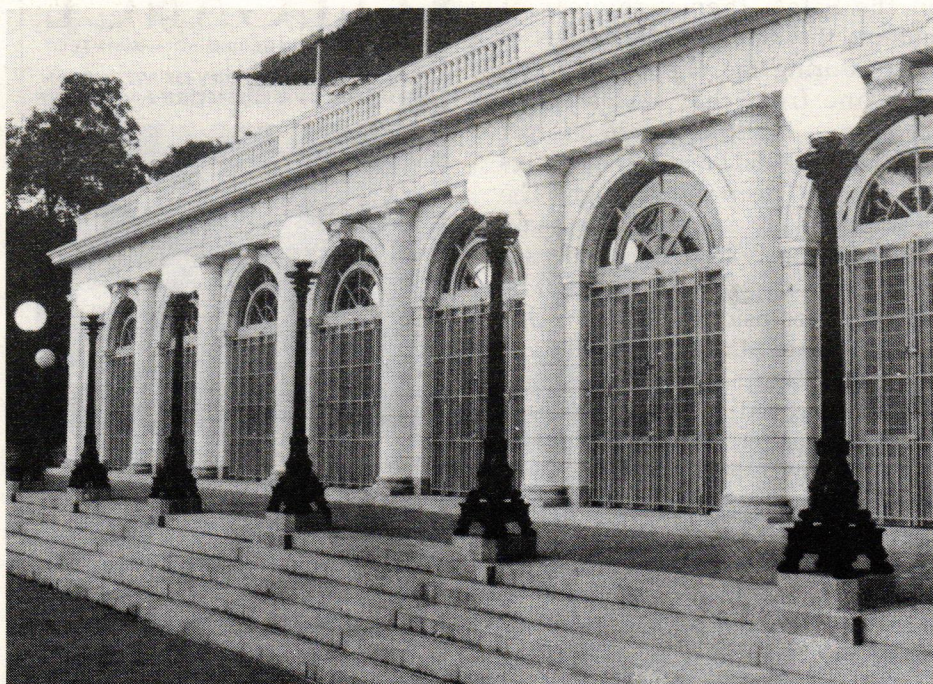
TrimbleHouse

*Craftsmen Preserving America's
Lighting Traditions*

4658 Old Peachtree Road
Norcross, Georgia 30071
For information call 1-800-241-4317
In Georgia 1-800-243-9393

Circle No. 105

IN THE SWIM WITH A DOLPHIN

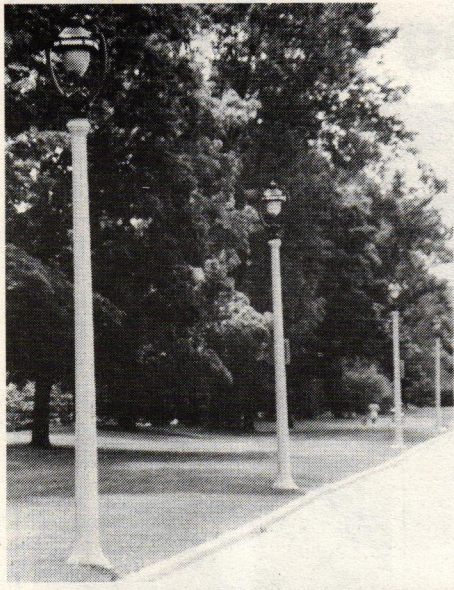


Valley Iron & Steel Co., commonly known as VISCO, has been producing iron castings for over 40 years, specializing in lighting standards, streetscape equipment, and custom castings for other exterior furnishings.

The company is particularly proud of its Dolphin pole. Five years ago, the New York City Parks Dept. lent VISCO an original brass dolphin pole from the Prospect Park Boathouse in order to make a pattern for reproductions. They returned the original — along with 20 new cast-iron Dolphin poles for the Boathouse restoration. Called simply "H Series," this handsome 10-ft.-high fixture consists of 23 individual castings and sells for approximately \$3,500.

For more information on VISCO, consult the pullout SourceList elsewhere in this section. — MO

THROW AWAY THE PAINT BRUSHES



If vandalism and maintenance are chronic problems, concrete light poles may be the answer. Great Lakes Concrete Products produces only poles — but they can be fitted with a variety of luminaires. Concrete is rugged, self-cleaning, does not require painting, and resists deterioration from salt spray or corrosive atmospheres.

All Great Lakes poles are sky gray (others colors available upon request) with an exposed aggregate finish and are available in heights from 6 to 31 ft. There are several traditional styles to choose from.

For more information about Great Lakes Concrete Products, see pullout SourceList in this section. — MO

A MARRIAGE OF MATERIALS

To the four main materials for light poles — cast iron, aluminum, fiberglass, and concrete — Classic Lamp Posts adds a fifth, which it calls "Polysteel."

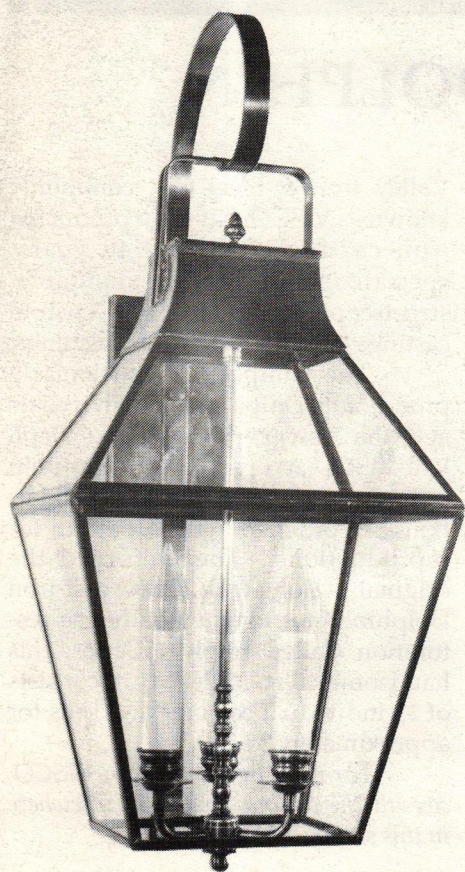
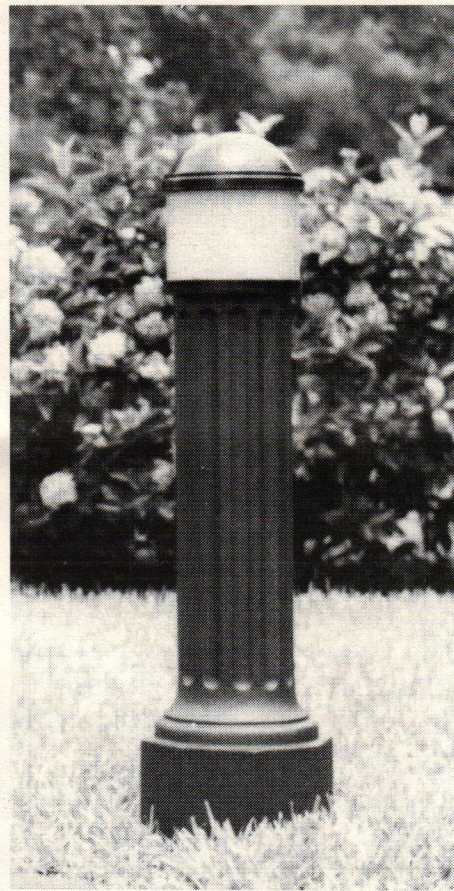
This material is a 3-part composite that combines the structural benefits of steel with the maintenance-free aspects of industrial polymers. The decorative part of these poles is made of linear low-density polyethylene (LLDP) combined with a structural polyurethane closed-cell foam, cast around a steel pipe.

The black color is not paint, but the material itself. LLDP is the same substance used to coat outdoor telephone cables and is impervious to the elements. The manufacturer claims this material has lower maintenance needs than any other material. The one-piece construction offers easy, inexpensive installation because it eliminates the need to build a wood form, pre-pour a cement slab, or lay in anchor bolts. Prices are 2/3 lower than cast iron and 1/3-1/2 lower than aluminum.

Classic Lamp Posts offers a variety of traditional posts in Polysteel, with a selection of single, double, and quadruple luminaires. Polysteel is also used for this bollard (shown), a reproduction of the old 1900 wharf posts found in many seaports. This lighted bollard, which can range in

height from 35" to 42", makes a handsome commercial entrance marker.

Most of the company's products are also available in cast aluminum. For more information about Classic Lamp Posts, see pullout SourceList in this section. — MO



Lanterns From Clipper Ship Days

Newstamp Lighting offers 7 variations on the Salem theme: replicas of lanterns that adorned the homes of Salem during the clipper ship era. This one from that series (244B Medium — it also comes in a larger size, 243B) is solid brass and measures 11" wide x 9" deep and 26" high. The clear panels are a special nonbreakable lighting acrylic, so they're perfect for exterior use where they might be subject to occasional impact. This model sells for \$189, plus shipping.

All fixtures from Newstamp are UL-approved, including the large volume of custom work turned out by the company. For example, Newstamp routinely modifies traditional fixtures to accommodate energy-saving high-pressure sodium lights for large developments.

For more information on Newstamp Lighting Co., see pullout SourceList in this issue. — MO

DECO DELIGHT

Just as there was a dearth of Victorian fixtures a few years ago, now there seems to be a shortage of ones with a Deco flavor. The exception is this mammoth Neo-Art-Deco luminaire from Sentry. It's not an actual reproduction, but was designed with a 1930's flavor by an Indiana firm for the Indianapolis Lower Canal project.

"It's a new look and we've been getting a lot of inquiries on it," says Sentry president Marvin Wittlin. The luminaire is made of cast aluminum with Lexan refractors and is painted gold and eggplant. It's also one of the largest commercially available luminaires, standing nearly 3 ft. high and 2 ft. wide. It has a glowing finial on top that is lighted via fiber optics. The unit was designed to sit on a 15-ft., 6-headed pole. Cost of the luminaire is approximately \$900 per unit.

For more information about Sentry Electric, see special pullout SourceList in this section. — MO



HISTORIC LIGHTING!

In addition to our collection of hand-forged Suffolk and Norfolk thumblatches, strap hinges, H and HL hinges, fireplace cranes, hand blown Bull's Eye and restoration glass, architectural brass hardware, porcelain knobs and many decorative accessories, we also offer an impressive selection of interior and exterior lighting fixtures including tin sconces, chandeliers, lanterns and postlights.

Send \$2.00 for our NEW catalog!



Historic Hardware Ltd.
Dept. TB Box 1327
No. Hampton, N.H. 03862
603-964-2280

Circle No. 114

VINTAGE LUMBER CO. CUSTOM FLOORING

Remilled Antique Heart Pine, Oak, Chestnut & White Pine. New Oak, White Pine, Cherry, Walnut & Maple.

T&G • Kiln Dried • Random Width
Antique Beams • Period Mouldings

FREE BROCHURE
301-898-7859

By Appointment Only

9507 Woodsboro Rd., Frederick, MD 21701

Circle No. 50

Top Quality Precision Millwork
CASINGS • BASES • CROWNS • CORNER BLOCKS
VICTORIAN ELEGANCE
DOORS • GINGERBREAD • WAINSCOT
LARGEST INVENTORY OF VICTORIAN
MOULDINGS & MILLWORK ANYWHERE

Specializing in Customer Service
Buy Direct From Manufacturer
Top Quality, Precision-made Products
Premium & Commercial Grades Available
No Minimum Order - Rush Orders are No Problem
We're Experts in Shipping & Packaging
Full Color Catalog with lots of Construction Ideas

SILVERTON
Victorian Millwork

Send for your free catalog.
Phone or write to:
P.O. Box 2987-T82
Durango, Colorado 81302
303/259-5915

Circle No. 45

STOP BIRDS From Dehabilitating Your Cherished Home.

Nixalite stainless steel needle strips are an impenetrable barrier to birds, and practically invisible too. They give you an effective, humane way of ending bird nuisances and maintenance costs. Send for your free information packet today.

NIXALITE OF AMERICA
1025 - 16th AVE • BOX 727
EAST MOLINE, IL 61244 • 309-755-8771
800-624-1189 • FAX 309-755-0077
SPECIALISTS IN BIRD CONTROL

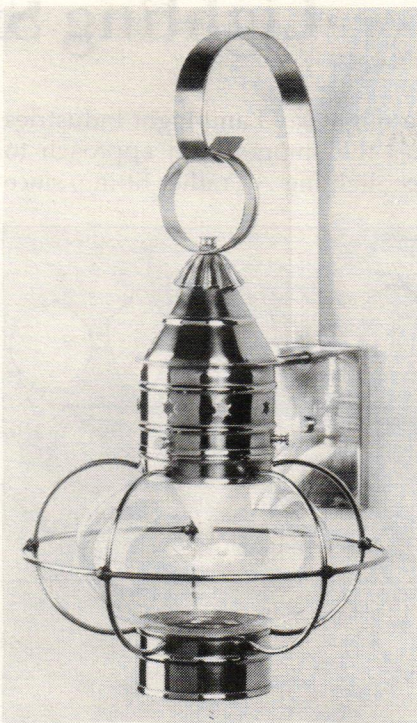
Circle No. 37

A UL-Listed Onion

Every fixture at Heritage Lanterns is individually cut, shaped, fit and assembled by hand. Nevertheless, as spokesman Cheryl Lyon stresses, "This light is UL-listed for outdoor use. I emphasize that it's *truly* UL-listed, not just an accumulation of UL-listed parts."

Known as the Onion Globe (B200, B201, or B202 depending on size), this fixture is a reproduction of early Colonial lanterns used by watchmen, farmers, and even jailers on their rounds. It's solid brass, and while it appears to hang loosely, is welded in place and cannot swing. At its smallest (16"h x 7-1/2"w), this globe costs \$149 in copper or brass, \$212 in pewter.

Catalog free on letterhead request. **Heritage Lanterns, 70-A Main St., Dept. TB, Yarmouth, ME 04096 (800) 544-6070. CSI# 16500 — MO**






THE BARCLAY



THE KENSINGTON



322 Geary Avenue
TORONTO, ONTARIO M6H 2C7
(416) 530-4200 FAX (416) 530-4666

Steptoe Manufactures & Distributes Quality Restoration Products:

- Cast iron spiral staircases
- Cast iron straight staircases
- W.F. Norman steel ceilings (Canada only)
- Anaglypta & Lincrusta embossed wallcoverings (Canada only)
- Shower convertos for old tubs (Canada only)
- Brass & steel railing systems
- Lawler cast iron railing & architectural detail
- Custom casting
- Solid teak garden furniture
- Plaster cornice & medallions
- Wood cornice moulding
- Exterior lighting

Circle No. 47

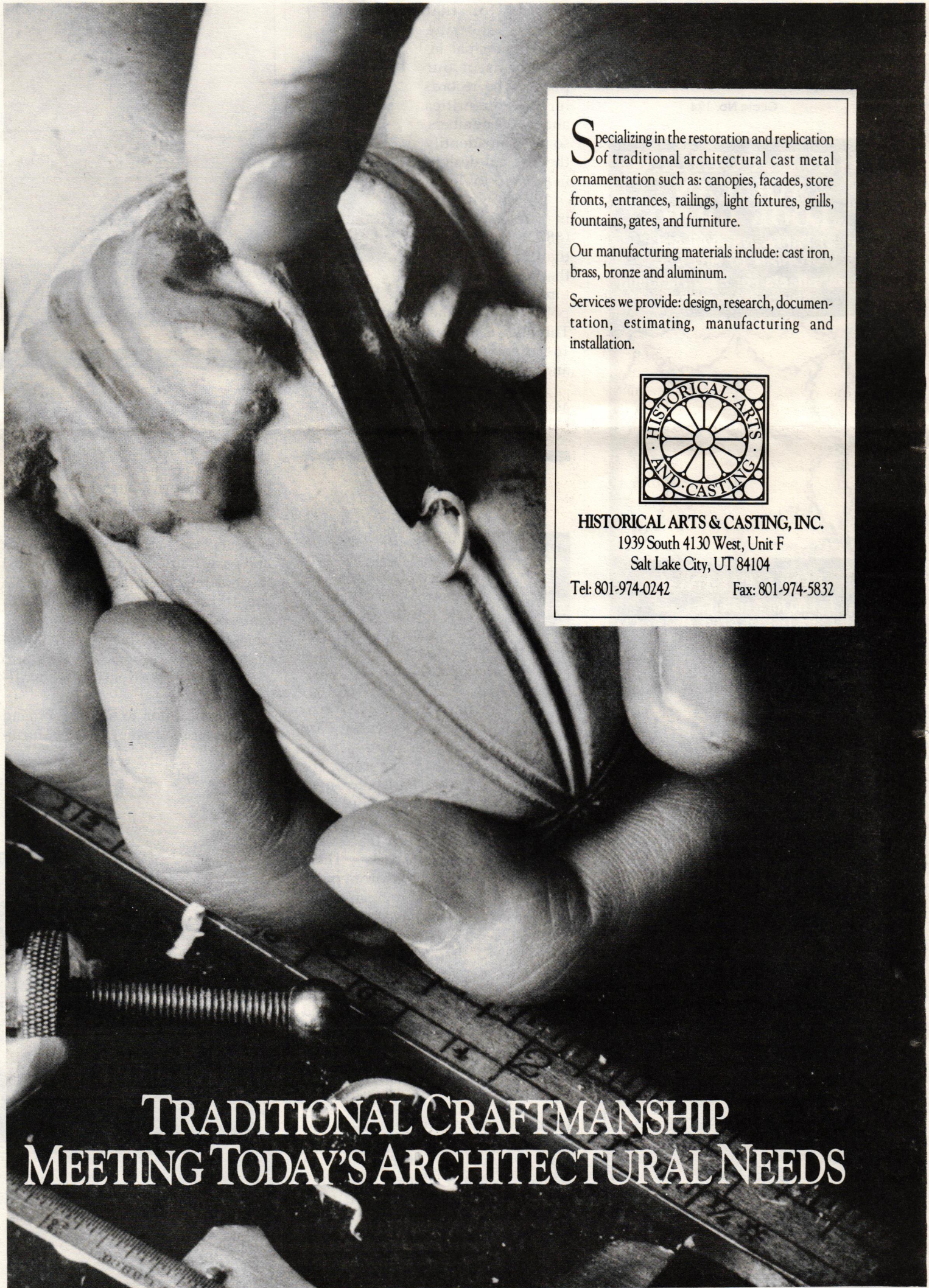
IN THE TRADITION OF SAMUEL YELLIN

There are a lot of metalsmiths around but not a lot of artists in metal. That's why, when we ran across Ned James' work at the Albany Restoration Show, we kept him in mind for a writeup. His craftsmanship is excellent and the finished pieces beautiful (see lantern below).



Doing almost exclusively custom work, Ned James keeps very little in stock. Recent projects include: a Mount Vernon lookalike in Greenwich, CT, for which he did 38 lanterns of varying shapes and styles; exterior lanterns, chandeliers and curtain rods, and a set of forged-copper door latches and hinges — all in the Arts and Crafts style, and forced-air and radiator grilles for the executive offices of Simon & Schuster.


For more information, contact: **Ned James — Wrought Metals, 65 Carol Street, Dept. TB, Turners Falls, MA 01376 (413) 863-8388. CSI# 05700 — JL**



Specializing in the restoration and replication of traditional architectural cast metal ornamentation such as: canopies, facades, store fronts, entrances, railings, light fixtures, grills, fountains, gates, and furniture.

Our manufacturing materials include: cast iron, brass, bronze and aluminum.

Services we provide: design, research, documentation, estimating, manufacturing and installation.



HISTORICAL ARTS & CASTING, INC.
1939 South 4130 West, Unit F
Salt Lake City, UT 84104
Tel: 801-974-0242 Fax: 801-974-5832

TRADITIONAL CRAFTSMANSHIP MEETING TODAY'S ARCHITECTURAL NEEDS

Circle No. 121



**Wide Plank Flooring
Custom Siding
Paneling & Moldings
Woodworking Services**

*Specializing in
Antique Longleaf Heart Pine,
Wormy Chestnut, Oak and
Select New Hardwoods*

**Free Brochure
301-432-8419**

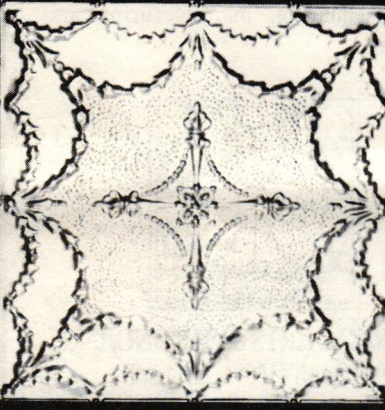
123 SOUTH MAIN STREET
BROWNSVILLE, MARYLAND
21715

Circle No. 124

**HAVE A CEILING
YOU CAN
LOOK UP TO**

21 PATTERNS AVAILABLE
VICTORIAN TO ART DECO

2'x4' Sheets For Easy Handling
Shipped Anywhere



TIN CEILINGS

Send \$1.00 for Catalog to:
CHELSEA DECORATIVE METAL CO.
9603 Moonlight Dr., Dept. TB
Houston, Texas 77096
Questions: 713-721-9200

Circle No. 19



**LANDMARK TYPE
WOOD WINDOWS AND DOORS**

THE ORIGINAL DETAILS. FAITHFULLY REPRODUCED FOR YOUR LANDMARK PROJECT.

OUR SERVICES, ASIDE FROM PRODUCING A QUALITY FINISHED PRODUCT, INCLUDE COMPLETE ENGINEERED DRAWINGS FOR LANDMARK COMMISSION APPROVAL.

IN ADDITION, WE ARE ALSO MANUFACTURERS OF CUSTOM ARCHITECTURAL WOOD WINDOWS, DOORS AND CABINETRY.

**UNITED STATES
WOODWORKING INC.**

35 ENGINEERS RD., HAUPPAUGE, NY 11788
(516) 234-4910

Circle No. 120

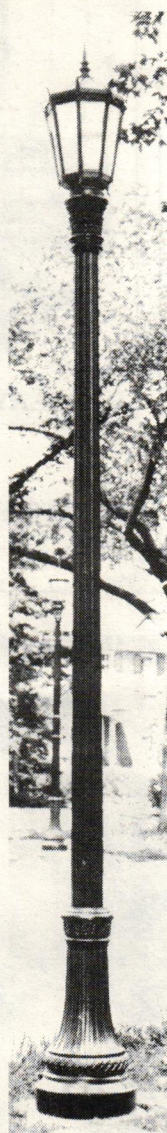
THE REAL THING

Although some streetlight manufacturers are fairly new to the business, Union Metal has been manufacturing poles since 1906. And they have retained all of the old patterns and molds, so they can easily re-create any of their original products.

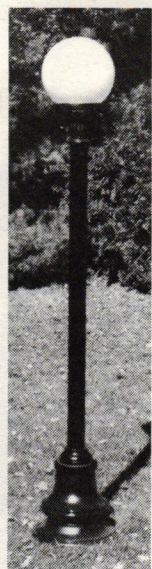
"We supplied most of the Main Street light poles in the U.S. from 1906 through the 1930's," says Union's Russell A. Poling. "We also have historical records for that period, showing 4,000 municipal installations of our poles. The records include quantities and model numbers, so we can identify the original designs in a given city."

Shown here is the Evanston (8872), named for the Chicago suburb that has recently restored thousands of these lights with poles cast from the original patterns. This style is available in 12-, 14-, and 16-ft. mountings, with fluted shafts and base plate construction.

For more information on Union Metal, see pullout SourceList in this section. — MO



A Concrete Idea



Thanks to recently developed polymer concrete technology, Advanced Materials, Inc., is able to offer decorative poles in a variety of materials — in addition to traditional cast iron.

Using original patterns, A.M.I. produces the Central Park and Bishop's Crook poles in cast iron. The Central Park pole, one of the most beautiful poles available, was designed to relate to the foliage found in parks. These sturdy cast-iron poles are frequently used in municipal restorations where they have to stand up to abuse.

A.M.I. has also developed polymer concrete technology to cast traditional bases and other decorative cast-iron elements. When combined with fiberglass or steel shafts, you get an authentic look (see photo) at a very affordable price, and the fixtures are also lighter and easier to install.

The polymer-concrete and fiberglass fixtures are normally used in residential and landscaping situations where they don't have to withstand heavy abuse. Although base-mounting is standard, the fiberglass units allow direct burial in the ground, reducing installation cost.

For more on Advanced Materials, Inc., see SourceList in this section. — MO

Lighting Smorgasbord

You might say LampLight Industries takes the smorgasbord approach to street lighting . . . rather fitting, since

President George Strom is from Sweden. "My name means 'Energy' in my Swedish. Quite appropriate to my business," he laughs.

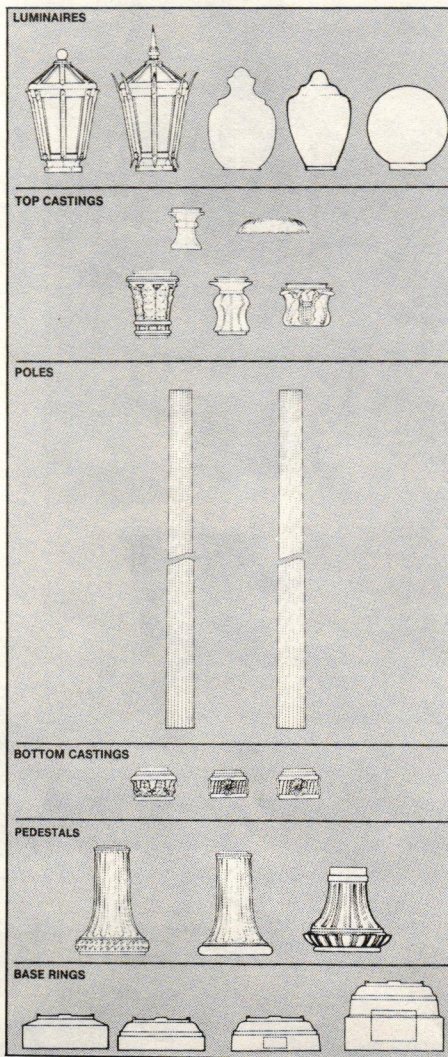
All LampLight's fixtures are broken into components, giving designers wide style choices. Lamplight offers two fluted poles, which can be combined with any of four base rings, three pedestals, three bottom castings, five top castings, and five classic luminaires. That means you can get a large number of variations from this simple set of components. It also has double-, quad-, and 5-light units.

There's a practical maintenance angle as well. If one section of a fixture is damaged, the entire unit need not be scrapped. Usually, it's relatively easy just to replace the damaged component.

Unlike some suppliers, which have been around for nearly a century, LampLight is a newcomer, founded in 1981. Strom had observed the city of Elyria, Ohio, replacing vintage lighting with modern, lower-quality fixtures. He knew there had to be a better way — and developed these practical replicas of historic fixtures.

All components are made in the U.S. of cast iron, steel and aluminum; globes are available in glass, polycarbonate, or butyrate.

For more information about LampLight Industries, see SourceList in this section. — MO



SITTING IN GOTHIC STYLE

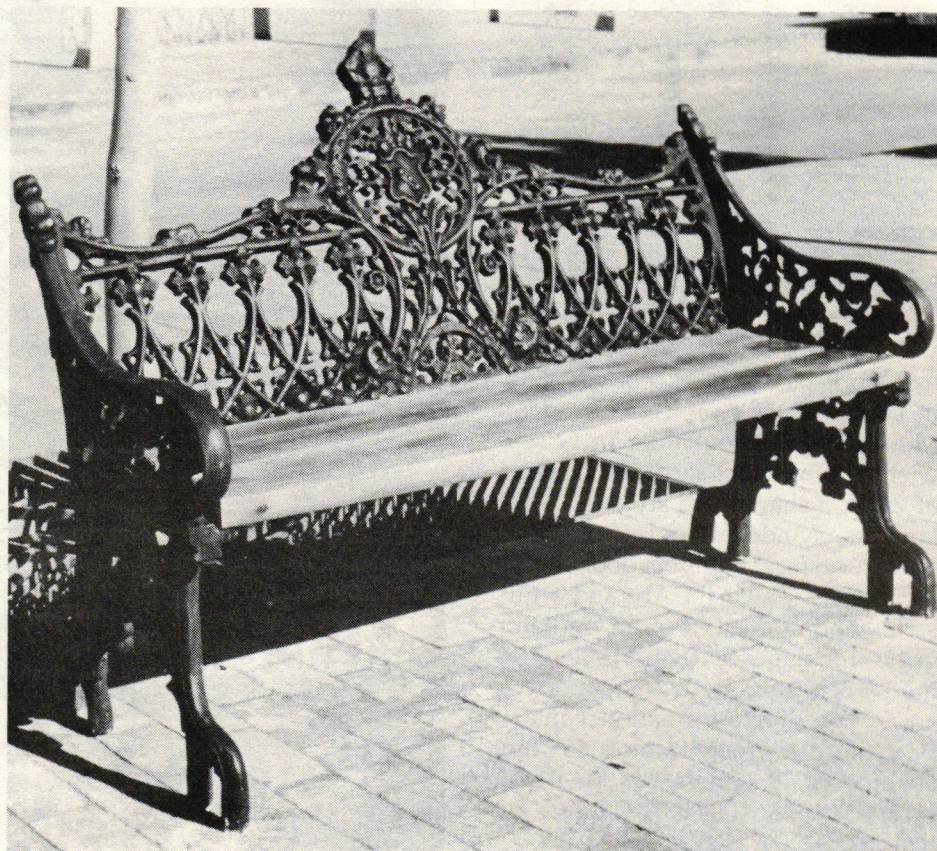
Niland Company carries a full range of cast aluminum light poles and luminaires with interchangeable components that enable designers to "cut and paste" various elements to get just the look they need. Styles range from the 18th century London look, to elaborately ornamented Victorian models, to classically influenced turn-of-the-century designs. There's also an extensive collection of wall-mounted fixtures.

In addition to lighting, Niland also has a broad range of street furni-

ture, including fountains, Victorian trash receptacles, bollards, urns and benches. This bench, called Plaza Crest PC-3030, is a handsome cast iron and wood design, featuring gothic revival tracery. The price, with contractor's discount, is \$264.

The company also has an attractive selection of Victorian style fountains, ranging from one bowl to four stacked bowls.

For more information on Niland Company, see pullout SourceList in this section. — MO



Additional Sources For Exterior Lighting & Street Furniture

◆ **Antique Street Lamps, Inc.**, 8412 South Congress, Dept. TB, Austin, TX 78745 (512) 282-9780. *Poles made of cast iron, cast iron & steel, cast aluminum, & fiberglass reinforced polyester with variety of luminaires.*

◆ **British-American Marketing Services**, 251 Welsh Pool Road, Dept. TB, Lionville, PA 19353 (215) 363-0400 & (800) 344-0259. *Variety of lamp poles, luminaires, & lanterns.*

◆ **Charleston Battery Bench**, 191 King St., Dept. TB, Charleston, SC 29401 (803) 722-3842. *Authentic cast-iron reproduction of Charleston Battery bench.*

◆ **Dutch Products & Supply Co.**, 166 Lincoln Ave., Dept. TB, Yardley, PA 19067 (215) 493-4873. *Cast aluminum streetlights, sconces, & mailboxes, from Holland. Literature \$1.*

◆ **Gates Moore**, 2 River Road, Silvermine, Dept. TB, Norwalk, CT 06850 (203) 847-3231. *A line of handcrafted Early American lanterns for interior and exterior use. Catalog \$2.*

◆ **Great Gatsby's**, 5070 Peachtree Industrial Blvd., Dept. TB, Chamblee, GA 30341 (404) 457-1905. *Various cast aluminum light poles, urns, fountains, benches, hitching posts, & entryway gargoyles.*

◆ **Heritage Lanterns**, 70-A Main Street, Dept. TB, Yarmouth, ME 04096 (800) 544-6070. *Handcrafted Early American copper lanterns for interior & exterior. Free brochure with letterhead request.*

◆ **Lighting By Hammerworks**, 6 Fremont Street, Dept. TB, Worcester, MA 01603 (617) 755-3434. *Line of handmade copper & brass lanterns for interior & exterior. Catalog \$3.*

◆ **Main Street Lighting**, 1021 Industrial Pkwy., Dept. TB, Medina, OH 44256 (216) 651-4431. *Ornamental fiberglass lamp posts.*

◆ **MarLe Company**, 35 Larkin Street, Dept. TB, Stamford, CT 06907 (203) 348-2645. *Line of high-quality handcrafted Early American lanterns. Also a handsome "Cornucopia" turn-of-the-century wall-mounted light.*

◆ **Mel-Nor**, 303 Gulf Bank, Dept. TB, Houston, TX 77037 (713) 445-3485. *Reproduction street lighting, park benches, mailboxes.*

◆ **Ned James — Wrought Metals**, 65 Carol Street, Dept. TB, Turners Falls, MA 01376 (413) 863-8388. *All work is custom. Has executed numerous lanterns & lighting fixtures to architects' specifications.*

◆ **Nowell's Inc.**, 490 Gate 5 Road, Dept. TB, PO Box 164, Sausalito, CA 94966 (415) 332-4933. *Specializes in historic lighting fixtures, especially chandeliers. Some coachlights, lanterns. \$3.50 for catalog.*

◆ **Park Place**, 2251 Wisconsin Ave. NW, Dept. TB, Washington, DC 20007 (202) 342-6294. *Streetlamps, benches, porch swings, sconces, & urns.*

◆ **Pinecrest**, 2118 Blaisdell Ave., Dept. TB, Minneapolis, MN 55404 (612) 871-7071. *Better known for doors & millwork, also has line of traditional street lights. Brochure free.*

◆ **Sterner Lighting Systems**, Dept. TB, Winsted, MN 55395 (800) 328-7480. *Wide selection of decorative post lighting, most contemporary, some traditional styles.*

◆ **Sunfeather Reproductions**, PO Box 5077, Dept. TB, Silver City, NM 88062 (505) 388-3318. *'Cast iron' designs reproduced in cast aluminum including streetlights, benches, fountains, & a carousel horse.*

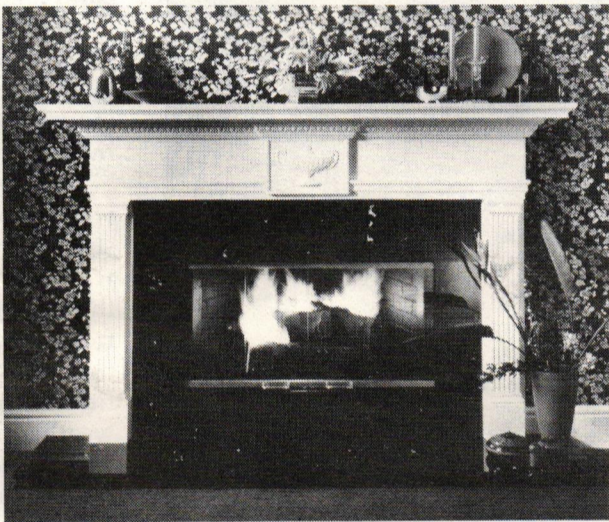
Ornament from England

Aristocast architectural ornament has been sold in England for over 10 years. Now, the company has expanded its marketing efforts to the U.S. — and we're impressed with the variety of reinforced-plaster and fiberglass moldings it has.

There are 11 types of niches, more than we've seen elsewhere (average price, \$350); 13 ceiling rosettes, including some finely-detailed classical ones (around \$90); as well as 19 moldings, and 23 crown moldings. All are made of fiber-reinforced plaster, a strong — and fireproof — material.

Then there are the 11 "Herculite" (gypsum) fireplace surrounds, which range from delicate Greek Revival to heavy Victorian and Tudor models, and cost between \$600 and \$1,500. Toward the end of the catalog are fiberglass columns, balustrades, door surrounds, and other exterior ornament. We're not too happy about the last entry in the catalog — polyurethane exposed beams — but nobody's perfect.

Free flyer or \$3 for color catalog. **Aristocast Originals**, 6200 Highlands Parkway S.E., Suite I - TB, Smyrna, GA 30082 (404) 333-9934. CSI# 09200 —EMK



Architectural Sheet Metal Ornaments

Now available from the W.F. Norman Corporation, makers of Hi-Art® Steel Ceilings - a complete, 94-year-old line of architectural sheet metal ornamentation including:

• moldings	• balusters	• finials	• marquee	• crestings	• lion heads
• brackets	• urns	• scrolls	• enrichments	• garlands	• conductor heads
• corbels	• capitals	• leaves	• glass pendant	• panel	• and fittings
• rosettes	• festoons	• friezes	• frames	• ornaments	

Over 1300 catalog items available in zinc or copper. Custom reproduction inquiries invited. W.F. Norman also produces building cornices, lintels, capitals, window hoods, finials and weathervanes.

Complete catalog \$2.50

W.F. Norman Corp. P.O. Box 323 Nevada, MO 64772 800-641-4038
(in Missouri: 417-667-5552)

Circle No. 82

QUALITY HANDCRAFTED

AUTHENTIC VICTORIAN GINGERBREAD

BRACKETS CORBELS SPANDRELS MILLWORK
TURNED AND SAWN BALUSTERS

SPECIALIZING IN CUSTOM REPRODUCTIONS

WOODCRAFTER SUPPLY

CATALOG \$1.50

P.O. BOX 28 - DEPT. TB
GERONIMO, TX 78115
(512) 557-6363

Circle No. 116

SMITH-CORNELL, INC.
Plaques of Distinction

THIS PROPERTY HAS BEEN
PLACED ON THE

NATIONAL REGISTER OF HISTORIC PLACES

BY THE UNITED STATES
DEPARTMENT OF THE INTERIOR

P.O. Box 686 TB PH: 219-925-1172 (IN)
Auburn, IN 46706 800-325-0248

Circle No. 46

REPLACE ROTTED SASH

Any style, any size. Wood storms and screens, too. Costs less than you think. Fast turn-around. Insulated glass available. Call or write for facts.

Midwest Wood Products

1051 South Rolff Street, Davenport, Iowa 52802
(319) 323-4757

Circle No. 65

**Conklin's Authentic
Antique Barnwood**

- Colors: Grey, Grey Silver, Brown, Red
- Maintain 50,000 to 100,000 sq. ft. in stock
- Random length and width
- Pine and Hemlock

**Hand Hewn Beams
Plank
Flooring**

For Further Information Call or Write
Leo Conklin
R.D. #1, Box 70
Susquehanna, PA 18847
(717) 465-3832
WHOLESALE ONLY

Circle No. 115

WIDE PINE FLOORING & PANELING (12" TO 21" WIDE)

Wide Oak Boards
Ship-lapped Pine
Pine Clapboards

Carlisle Restoration Lumber

Route 123,
Stoddard, N. H. 03464
603-446-3937

Circle No. 61

FINE EUROPEAN
FAUCETS AND
ACCESSORIES

WATERCOLORS

GARRISON ON HUDSON NEW YORK 10524 914 424 3327

Circle No. 53

Victorian and Country Bentwood
Screen & Storm doors

- Handcrafted hardwood
- Authentic period hardware
- Styles include: Victorian, Country, Bentwood, Colonial, Cape Cod, Ranch

CATALOG \$2.00 (Refundable with order)

VISA MasterCard
(313) 664-1756

GRAND ERA REPRODUCTIONS

P.O. BOX 1026 • LAPEER, MI 48446

Circle No. 117

Maine's Only Producer of Traditional
"Quartersawn" Pine Clapboards

DONNELL'S CLAPBOARD MILL

With special 19th century machinery we have revived an almost forgotten sawing process. We produce the authentic air-dried radially sawn clapboards for the exacting customer or the discriminating builder. For informative brochure please send \$1.

Donnell's Clapboard Mill
County Road, R.R. Box 1560
Sedgwick, Maine 04676
(207)-359-2036

Circle No. 26

MAER MURPHY INC.

<p>TROMPE L'OEIL FAUX BOIS MARBLEIZING GLAZING STENCILLING GILDING MURALS ARCHITECTURAL DECORATION ORNAMENTAL PLASTER AND RESTORATION PAINTING AND WALLPAPERING</p>	<p>FURNITURE DECORATION AND FINISHING CREATIVE FINISHES FOR RESIDENTIAL AND COMMERCIAL SPACES THROUGHOUT THE U.S.A.</p>
---	---

429 WEST 53RD ST.
NEW YORK, N.Y. 10019
TELEPHONE:
212-265-3460

Circle No. 125

Hi-Art

Decorative Metal Ceilings
Original turn-of-the-century patterns

Using eighty year old dies, the W. F. Norman Corporation is once again producing metal plates for the design of ceilings and wall coverings. Their growing popularity stems not only from nostalgia but from their beauty, permanence, fireproofing and economy.

The fullness of the Hi-Art™ line — including center plates, corner plates, border plates, cornice and filler plates — permits classic designs to be produced that are architecturally proportioned for an exact fit.

Write for reproduction copy of 72 page illustrated catalog. Price \$3.

W. F. Norman Corporation
P. O. Box 323 • Nevada, Missouri 64772 • 800-641-4038

Circle No. 52

**VICTORIAN
GINGERBREAD
TRIM**



Now from one source you can obtain corbels, fretwork, trim, corner brackets, porch railings and more.

- Use for interiors or exteriors
- Use to blend with originals or as complete replacements.

Send \$1.00 for pictorial catalog and price list.

**PASTERNAK'S
EMPORIUM**

2515 Morse Street Dept. TB
Houston, Texas 77019
(713) 528-3808

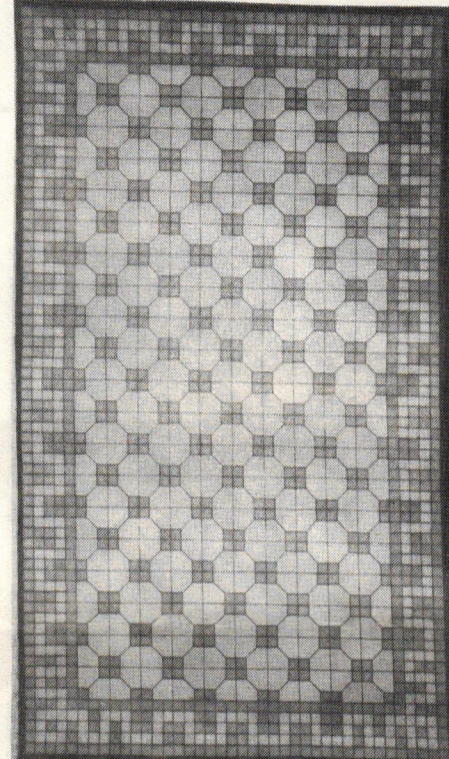
Circle No. 113

historical products (continued from page 6)

Art You Can Walk All Over

18th- and 19th-century craftsmen weren't the only ones who thought painted floorcloths were a good idea. Fine artists June Moss and Tom Dillon think so, too — and have recently brought their art to the floorcloth business.

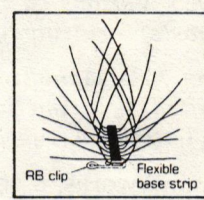
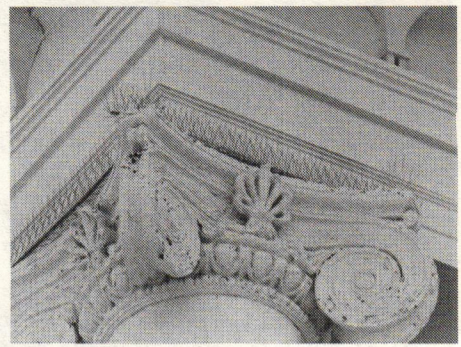
Although many of the early floorcloths were block-printed (see our review of *Floor Coverings for Historic Buildings* in the Nov./Dec. issue), June and Tom hand draw and paint their cloths. While specializing in Italian tile motifs (see photo below), all their work is to order, so the designs can reflect almost any architectural or interior style.



All their colors are hand-mixed, applied on heavyweight cotton duck and coated with multiple layers of satin urethane, making the cloths durable and easy to wash. Prices can range anywhere from \$800-\$2000 depending on the intricacy of the design and the dimensions of the floorcloth.

For more information, contact: **Tom Dillon and June Moss, 330 East 11th Street, Dept. TB, New York, NY 10003 (212) 777-8031 or (914) 557-6151. CSI# 09680 — JL**

PIGEON BUSTERS



Something strange in your cornice? And it don't look good? Who ya gonna call? Pigeon Busters! Nixalite of

America has specialized in pest control problems for 38 years. And when it comes to birds, pigeons especially, Nixalite has the solution.

Used on such notable structures as the Old U.S. Mint Building in San Francisco, Grand Central Station in New York City, and Unity Temple in Oak Park, Ill., Nixalite discourages birds from roosting, without detracting from the architectural integrity of the building.

Made of thin stainless steel wires that project from a stainless strip, Nixalite is affixed to buildings where birds are known to roost. The thin wire projections prevent the birds from landing on the protected structure. The wires are hard to discern from normal viewing distances, and as weathering creates a patina, they are hard to see at closer distances also. It's long-lasting, too; Nixalite installed in 1955 on a barn on Eisenhower's Farm in Gettysburg, Pa., is still in place!

Nixalite comes in a variety of sizes depending on the bird you need to discourage — pigeons, sea gulls, starlings, buzzards, to name a few. All-purpose Nixalite, NX77 costs \$380 per 100 ft. (mounting hardware included). Individual pieces as short as 2 ft. are available for \$8.60.

For more information, contact: **Nixalite of America, 1025 16th Ave., Box 727, Dept. TB, East Moline, IL 61244. (800) 624-1189/FAX (309) 755-0077. CSI# 10290 — TM**

Stripper's Paradise

If you ever get involved with exterior restoration, you ought to take a look at the 23-pg. 1988 catalog from American Building Restoration. It contains the largest off-the-shelf array of chemicals and equipment for restoration that we've seen.

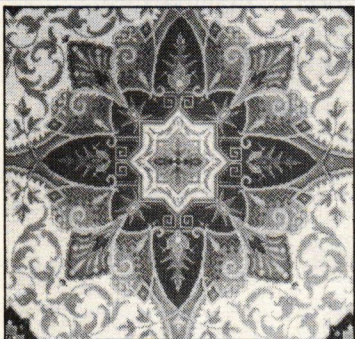
The product line includes paint strippers, waterproofers, building cleaning acids, wood preservatives, graffiti fighters, masonry cleaners, floor degreasers and cleaners, and related equipment. There are both alkaline strippers and methylene chloride strippers, in formulations designed for many different applications. Need to fireproof wood shakes? Investigate ABR Firecoat. There's also a series of videos that show proper use of the chemicals on exteriors and inte-

riors (\$18.95 each postpaid). One nice feature: For each chemical, the catalog has a "Negatives & Limitations" section that tells what the stuff won't do, and what to watch out for.

One product selected at random from the product line: Old 500 2-Part Limestone Cleaner. It's designed to clean blackened limestone or surfaces with large amounts of ferrous oxide present. Part 1 consists of a high-alkaline soap solution that starts the job. Part 2 neutralizes and brightens the surface. Coverage: Part 1 (\$16.90/gal.) 150 sq. ft./gal.; Part 2 (\$15.67/gal.) 350 sq. ft./gal.

For a free catalog, contact: **American Building Restoration, 9720 S. 60th St., Dept. TB, Franklin, WI 53132 (800) 346-7532. CSI# 04500 — CL**

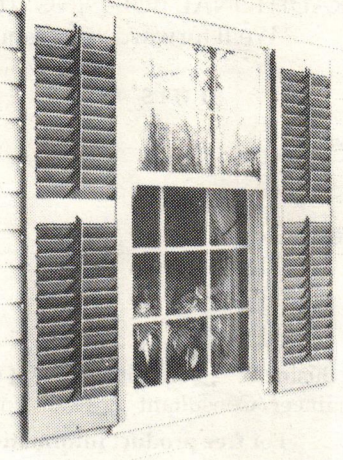
J.R. BURROWS & CO.
HISTORICAL-DESIGN MERCHANTS
 Shop at 6 Church Street, Boston, MA
 617/451-1982



President Taft House Carpet c. 1870
 Burrows & Co. offers the restoration community an extraordinary collection of Wilton and Brussels carpets in nineteenth century patterns. Period pattern papers in the mill's archives are the source for a diverse range of designs from 1800 - the 1910's. Custom woven to order on antique looms in 100 tuft per inch worsted Wilton quality.

P.O. Box 418, Cathedral Station,
 Boston, MA 02118 Catalog \$4.00

EXTERIOR WOOD SHUTTERS



Hard-To-Find Wood Shutters with moveable louvers can be used outdoors or in. Fixed louver, raised panel, and custom arches also available. Order unfinished or primed and painted. Hinges and holdbacks shipped daily by UPS.

Brochure: (203) 453-1973
SHUTTERCRAFT 282 Stepstone Hill
 Guilford, Conn. 06437

Landmarks



Erie Landmark Co. offers custom markers for indoor-outdoor use.

Standard plaques
 7" x 10" \$90.00
 (plus \$2.25 for shipping and handling)
 (plus NYS sales tax where applicable)

- **Bronze** - raised oval letters with polished or antiqued finish.
- **Redwood** - with raised 12 K gold leaf letters and borders on a textured background of natural or black stain.

Or send for **FREE BROCHURE:**

Erie Landmark Company
 Suite 211
 90 West Montgomery Ave.
 Rockville, Maryland 20850
Tel: (301) 460-9575
 call toll free
1-800-874-7848
 Other styles and dimensions available upon request.
 Satisfaction guaranteed
 Please allow 6 to 8 weeks for delivery

MAD RIVER WOODWORKS
ARCHITECTURAL MILLWORK

- MOLDINGS
- PICKETS
- SCREEN DOORS
- PORCH PARTS

CATALOG \$2.50
 P.O. Box 163 Dept. TB, Arcata, CA 95521

Circle No. 35

GOLDEN AGE GLASSWORKS

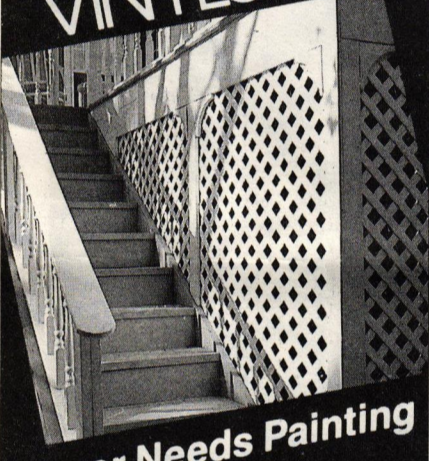
SHOWROOM NOW OPEN!!
 Call For Appointment

- Museum Reproductions
- Restorations
- Custom Windows
- Victoriana
- Residences/Institutions (Original Old American, Imported Canadian, and English Glass Sold.)
- Many Victorian Pieces

B. Arrindell
 339 Bellevue Road
 Warwick, NY 10990
 (914) 986-1487

Circle No. 28

the Original
CROSS VINYLattice



Never Needs Painting

Now or soon to be available at
 over 1000 fine stores

Lasts A Long Time

For more information call
1 800 521-9878

California Arts & Crafts Tiles ■ Art Deco Tiles
 Custom Ceramic Tiles & Murals
 Historic Reproductions ■ Traditional Patterns
 Coordinated borders ■ Quadrats ■ Corner blocks



Designs In Tile™

415/571-7122
 Dept. T ■ Box 4983 ■ Foster City ■ CA ■ 94404
 © 1987 Designs In Tile Illustrated Brochure \$3
 Country Tiles ■ Custom Murals ■ Folk Tiles

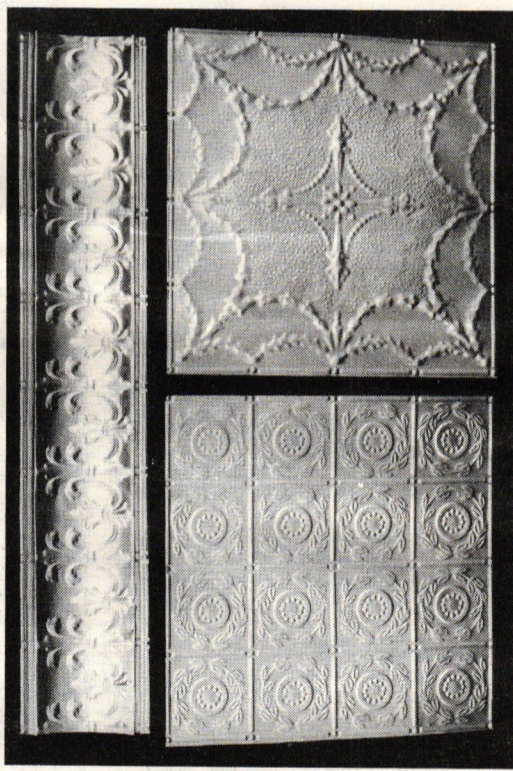
Victorian Transfer Tiles in the Anglo-Japanese Style ■ Persian Revival Tiles ■ Art Nouveau Tiles
 Victorian Foliage Tiles ■ William DeMorgan Style Tiles ■ Period Pavements ■ Spring Garden Tiles

Circle No. 25

New Tin Ceilings Patterns

Chelsea Decorative Metal has added some new designs to its line of pressed-metal ceilings: two panels and a cornice. All were originally manufactured at the turn of the century, and all are sealed with a new tin-plated finish, which makes them easier to paint.

The cornice features a fleur-de-lis design, and costs \$10.85 for a four-foot length. The panels both come in two-by-four sheets for \$16 per sheet. The garland design (right) repeats in two-foot-square sections, and the boxes on the wreath pattern (also right) measure six inches square. For Traditional Building readers, Chelsea will send out its catalog free. Contact: **Chelsea Decorative Metal Co., 9603 Moonlight, Houston, TX 77096 (713) 721-9200. CSI #09515 — EMK**



architorture



Construction projects in Baltimore often must comply with sediment control requirements. Too bad there isn't a *Pediment Control Department*. Perhaps after this building is completed, there will be.

Submitted by: Dick Schaefer & Sharon Miller, Baltimore, MD

If we accept your Architorture entry, you will receive a Traditional Building wristwatch. It has quartz movement, a leather band, and, of course, a traditional face with **real numbers** and a sweep second hand.

CUSTOM HISTORICAL REPRODUCTIONS IN METAL

- CORNICES
- LOUVERS
- DORMERS
- BALUSTRADES
- SIGNS
- URNS
- FINIALS
- RAILINGS
- CUPOLAS
- STEEPLES

MANY STOCK DESIGNS AVAILABLE

CAMPBELLVILLE INDUSTRIES, INC.
 P.O. Box 278-T Ph. 800-626-0350
 CAMPBELLVILLE, KY 42718

Circle No. 17

FREE PRODUCT INFO

To obtain free catalogs of historical products, use the coupon on page 21.

Cedar "Thatch"
continued from page 1

— creating dramatic patterns and illusions of dimension; the roof becomes a unique work of art.

Most contractors who have experience with cedar shingles will fare well. Estimating the number of shingles is essentially the same as with a conventional roof; the tricky parts are the perimeters (eaves, valley & hip runs, gables) — and there the contractor need only give the lineal measurement.

The shingles are standard thickness: 16" Western Red Cedar #1 grade. Rule of thumb for pricing: about twice the cost of a conventional cedar roof (including labor). Rule of thumb for installation time: about twice as long as it takes to install a conventional roof.

For more information, contact: **Gary Cooke or Barry Huber, C & H Roofing, 1305 East 39th Street No., Dept. TB, Sioux Falls, South Dakota 57104 800-327-8115. CSI# 07310 — JL**

advertiser index

RS#	COMPANY	PAGE
◆ Division 2 — Sitework		
010	Bench Manufacturing Co.	10
122	Vixen Hill Manufacturing Co. 9	
◆ Division 5 — Metals		
017	Campbellsville Industries	22
062	Conant Custom Brass	8
027	Erie Landmark Co.	22
121	Historical Arts & Casting	17
046	Smith-Cornell	19
047	Stephoe & Wife	17
082	W.F. Norman Corp.	19
◆ Division 6 — Wood & Plastics		
061	Carlisle Restoration Lumber 19	
018	Chadsworth, Inc.	21
	Colonial Woodworks	5
115	Conklin's Antique Barnwood 19	
023	Cross Industries	22
026	Donnell's Clapboard Mill	19
035	Mad River Woodworks	22
036	Mauer & Shepherd Joyners	8
113	Pasternak's Emporium	20
045	Silverton Victorian Millworks 16	
050	Vintage Lumber Co.	16
116	Woodcrafter Supply	19
124	Woods American Co.	18
◆ Division 7 — Moisture Protection		
033	M.J. Mullane Company	6
◆ Division 8 — Doors & Windows		
008	Ball & Ball	24
117	Grand Era Reproductions	19
065	Midwest Wood Products	19
041	Restoration Works	6
044	Shuttercraft	22
120	United States Woodworking 18	
123	Vixen Hill Manufacturing Co. 8	
094	Woodstone Co.	5
◆ Division 9 — Finishes		
001	AA Abbingdon Affiliates	6
118	Aristocast Originals	6
013	Bradbury & Bradbury	6
019	Chelsea Decorative Metal Co. 18	
022	Crawford's Old House Store 9	
025	Designs In Tile	22
064	Felber Studios	23
041	Restoration Works	6
052	W.F. Norman Corp.	20
◆ Division 10 — Specialties		
037	Nixalite	16
◆ Division 12 — Furnishings		
028	Golden Age Glassworks	22
	J. R. Burrows & Co.	22

◆ Division 15 — Mechanical		
041	Restoration Works	6
053	Watercolors	19
◆ Division 16 — Electrical		
007	Advanced Materials	15
006	Authentic Designs	14
014	Brass Light Gallery	15
075	Classic Accents	8
114	Historic Hardware Ltd.	16
	Josiah R. Coppersmythe	14
080	Newstamp Lighting	14
	Otto Wendt & Co.	10
041	Restoration Works	6
043	Roy Electric Co.	10
103	Spring City Electrical	13
105	Trimble House	15
	Victorian Lighting Co.	15
	Washington Copper Works 13	
◆ Division 17 — Services		
	Alexious Design Associates . 6	
125	Maer-Murphy, Inc.	20
119	Russak Restoration	5

editorial index

ITEM	PAGE
◆ Division 2 — Sitework	
Street furniture	13
Street Furniture	18
◆ Division 4 — Masonry	
Chimney liner, zero clearance	23
◆ Division 5 — Metals	
Metal, wrought -- decorative	17
Metalwork, decorative -- architectural 3	
Wiert, Jean -- Arch. Metalworker	3
◆ Division 6 — Wood & Plastics	
Shutters, custom wood	4
◆ Division 7 — Moisture Protection	
Thatch, Cedar Shingle	1
◆ Division 9 — Finishes	
Glass, stained & leaded	6
Floorcloths, painted	20
Paint stripper, peel-off	4
Paint strippers	20
Plaster Moldings	19
Tin Ceilings	22
Wallcoverings, search for	5
Wallcoverings, Victorian	4
◆ Division 10 — Specialties	
Pigeon repellants	20
◆ Division 12 — Furnishings	
Drapery, window	4
Window treatments	4
◆ Division 15 — Mechanical	
Registers & grilles, hot air	5

ORNAMENTAL PLASTER



FABRICATORS OF FINE PERIOD & CUSTOM ORNAMENT
 Cornice • Medallions • Sculpture • Niches • Capitals • Brackets • Domes

FELBER

STUDIOS INC.

110 Ardmore Avenue, Box 551A
 Ardmore, PA 19003 • (215) 642-4710

Call or write for our illustrated catalog

Circle No. 64

Toilet, high-tank	6	Lighting fixtures, exterior	8
Vents, moisture	4	Lighting fixtures, exterior	10
◆ Division 16 — Electrical		Lighting fixtures, exterior	9
Lanterns, copper -- exterior	9	Lighting fixtures, exterior	18
Lanterns, exterior	17	Lighting fixtures, exterior	15
Lanterns, exterior	6	Lighting fixtures, exterior	14
Lanterns, exterior	14	Lighting fixtures, exterior	9
Lanterns, exterior	14	Lighting, exterior -- simulated gas . 14	
Lanterns, exterior, Victorian	19	Lighting poles, concrete	16
Lighting fixtures, exterior	16	Lighting poles, exterior	18
Lighting fixtures, exterior	15	Lighting, exterior -- SourceList	11
Lighting fixtures, exterior	16	Lighting, exterior -- Special Report . 7	
Lighting fixtures, exterior	14	◆ Division 17 — Other	
Lighting fixtures, exterior	18	Architorture, pediment control	22
Lighting fixtures, exterior	13	Preservation in the 1990's	2
Lighting fixtures, exterior	6	Siegel's Scratchboard	23
Lighting fixtures, exterior	15		

Chimney Liner Passes UL "Zero Clearance" Test

In an important first for the chimney industry, Solid Flue Chimney Systems reports that its lining system has just passed the test for Underwriters' Laboratories 1777 standard at zero clearance to combustibles. The tests were conducted for Solid Flue by the Warnock Hersey Testing Labs, both for UL 1777 HT and the tougher Canadian standard, ULC S640.

This means that there is now a liner that should be able to be installed safely in old chimneys that have combustibles (such as roof framing timbers) touching the masonry. The UL 1777 standard normally requires a 1" air space between the chimney masonry and any adjacent combustibles.

There are an estimated 100 million noncode chimneys in the U.S. One of the most common code violations is the presence of wood elements butting against — or extending into — the chimney masonry. And simply lining these chimneys doesn't necessarily bring them up to code.

In actual practice, on chimney lining retrofits it requires extensive breaking of plaster to determine whether or not the required 1" airspace exists for the full height of the chimney stack. As a result, most chimney lining contractors don't bother to check; they just make sure their liability insurance is paid up.

In the Solid/Flue system, a cementitious slurry is pumped around an inflatable insert, creating a cast-in-place liner. Joe LaFleur, who runs Solid/Flue along with his son Doug, spent 2 years searching for the right mix of insulating ingredients that would pass the test. In addition to being highly insulative, the liner has to be waterproof (to handle chimneys subject to condensation), and have a high compression strength (2,100 psi.) to provide strength to wobbly chimneys.

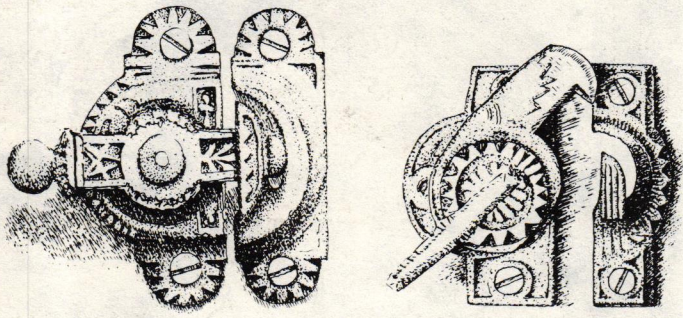
For more information, contact: **Doug LaFleur, Solid/Flue Chimney Systems, 9797 Clyde Park SW, Dept. TB, Byron Center, MI 49315 (800) 444-3583. CSI# 04200 — CL**

siegel's scratchboard



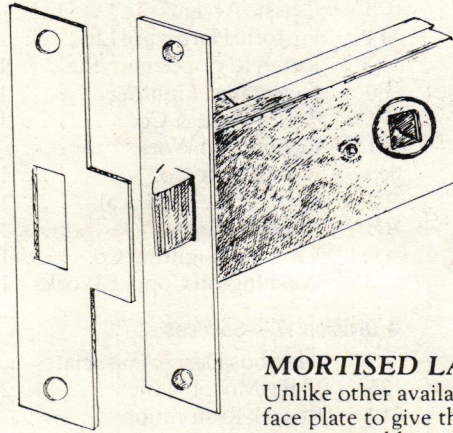
"Ever since you attended that Victorian Society meeting, Gloria, I feel as if I don't know you anymore."

BALL AND BALL



COMPRESSION BRONZE SASH LOCKS

Our patterns for these exactly copy the appearance, and the operation of the originals.



MORTISED LATCH SET

Unlike other available sets this one has a 4" high face plate to give the appearance of a larger lock at a reasonable price.

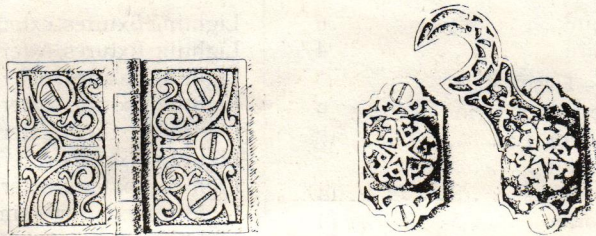
BALL AND BALL, founded in 1932 is proud to continue to offer the finest quality line of builder's hardware available.

Our experience includes park service and private restorations, from Alaska to St. Thomas, Maine to New Mexico.

Restoring or copying your original hardware is a specialty. Matching originals are available for hundreds of furniture and house hardware items.

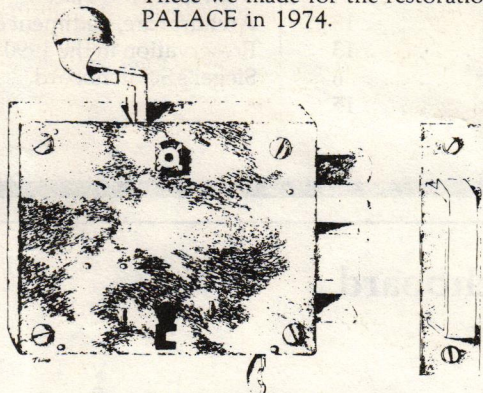
Watch our space in coming issues for "New" products.

Call or write for details and our FREE MINI-CATALOG. Or send \$5⁰⁰ for our complete catalog.



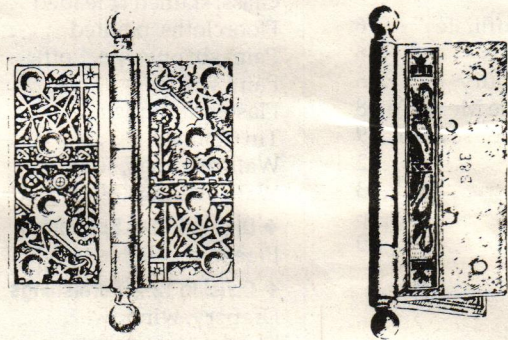
INSIDE SHUTTER HARDWARE

In brass and cast iron were used in many homes. These we made for the restoration of IOLANI PALACE in 1974.



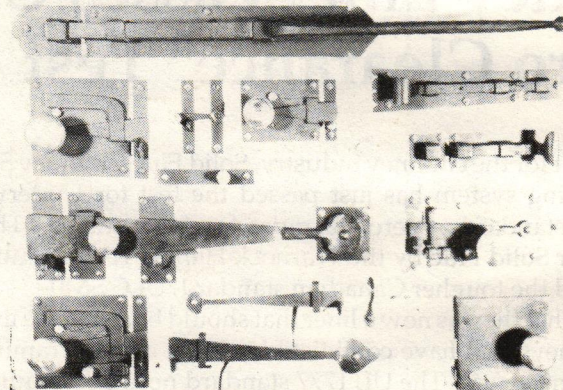
DUTCH ELBOW LOCK

Made in the Pennsylvania German settlements from the 1730's, the unique lever allowed you to open the door with your hands full. We have many originals for sale.



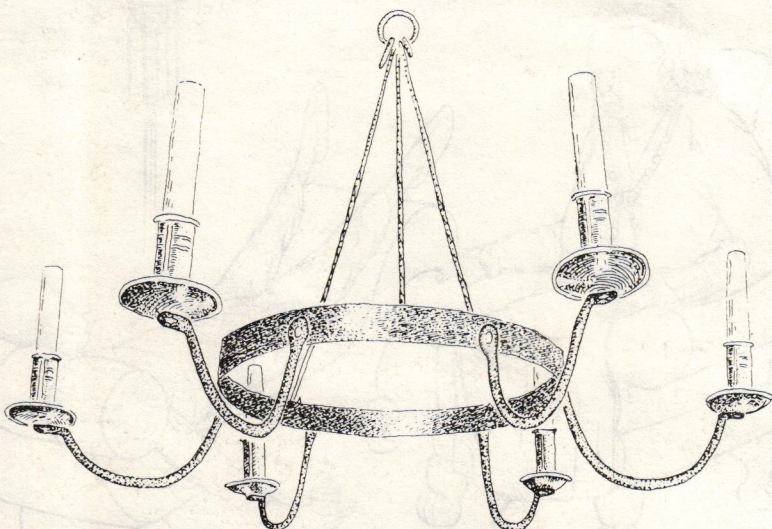
DECORATIVE BUTT HINGES

Made during the 1800's of brass or iron. We have copied both, in a wide range of sizes and patterns. Our casting and assembly process allows long life and smooth operation.



COLONIAL PERIOD HARDWARE

No other firm matches our quality, delivery, and variety of hardware of this type. We have hundreds of originals for sale, can copy your samples, and can supply the quantity you need, from 1 to 1000 pieces. We are suppliers for many National Park Service projects.



BRASS TRIMMED IRON CHANDELIER

Patterned after an original, this light has been popular in rustic, or informal settings since we made the first one in 1965. We can make one to fit any application.

BALL and BALL

Finest Quality Reproductions

463 W. Lincoln Hwy.

Exton, PA 19341

(215) 363-7330

FAX only (215) 363-7639