

# THE FEDERAL ARCHITECT

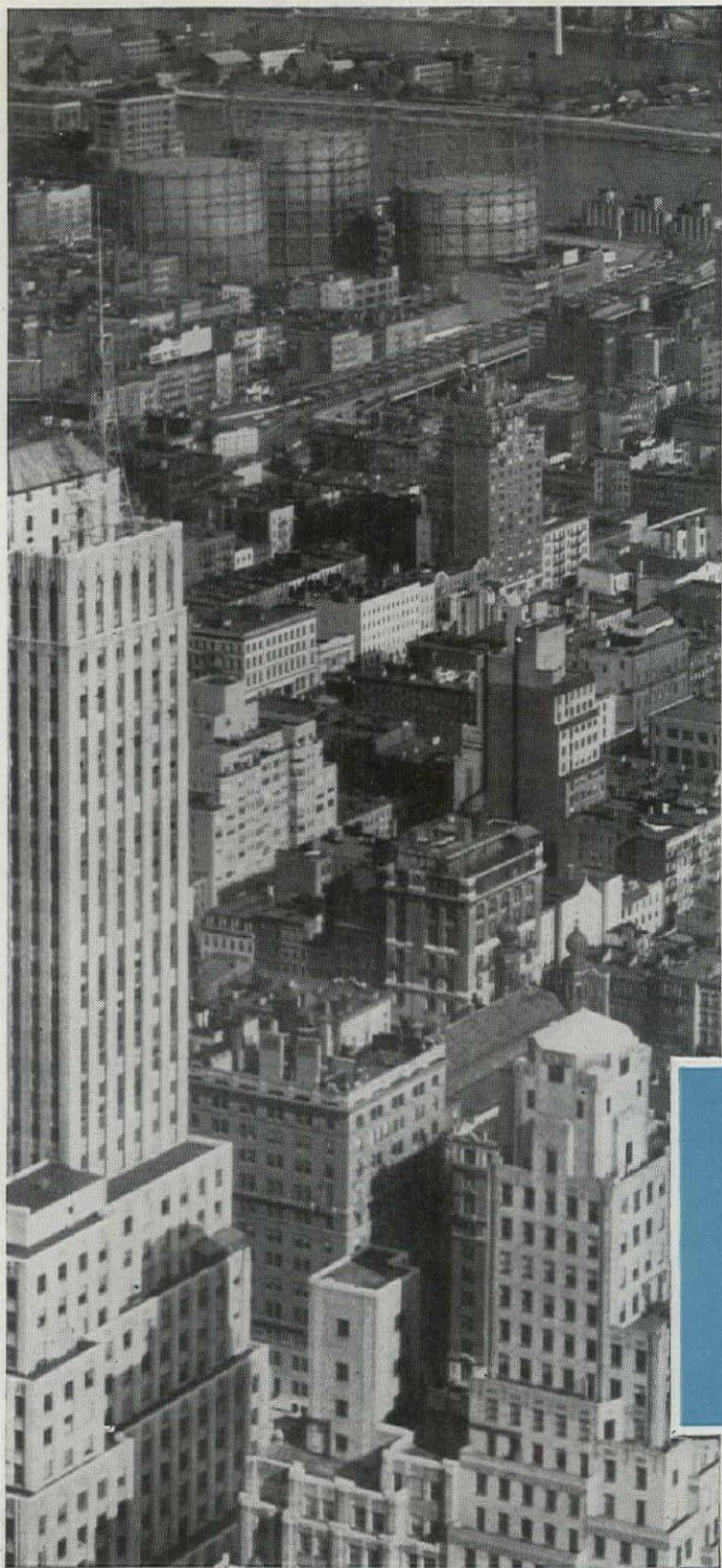


11-5-45

*J. M. W.*

DIRECTORY  
ISSUE

APRIL-JULY, 1945



# BETTER CONTROLS TO COME!

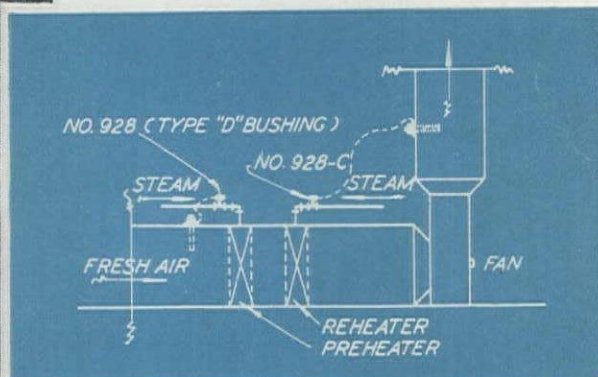
**E**VEN NOW it is safe to prophesy vastly improved temperature controls of every type, in the immediate post-war period.

Co-operation with the heating and air-conditioning industry . . . together with work on various military and industrial projects have added invaluable design and production experience.

In the past, fully modulated Fulton Sylphon Regulators have meant worth-while fuel economy—increased tenant satisfaction.

Rest assured that future Sylphon Regulators will be even more efficient.

There are many different types of Sylphon Regulators, and for most requirements of air-conditioning systems. Many of these instruments are available now for essential commercial installations. Ask for Bulletin EPA-821.



TYPICAL INSTALLATION shown above features Fulton Sylphon Regulators, No. 928 and 928-C, installed in a central fan ventilating system. Here the designated temperature of the delivered air is maintained together with pre-heater freeze protection.

# FULTON



# SYLPHON

TEMPERATURE CONTROLS

BELLOWS . . . BELLOWS ASSEMBLIES

THE FULTON SYLPHON CO., KNOXVILLE 4, TENNESSEE

Canadian Representatives, Darling Brothers, Montreal

*Specify* the world's finest

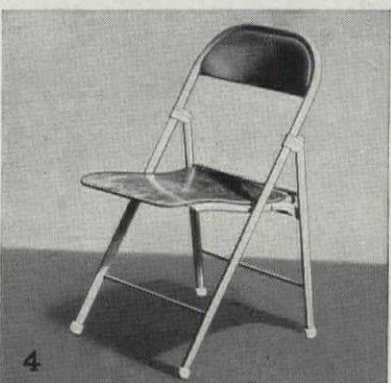
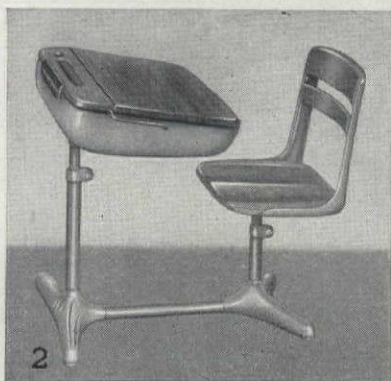
Seating

for Government and Public Requirements

American Seating Company's leadership, established through more than half a century of experience, is your assurance of the highest satisfaction when specifying the type of seating equipment you need. For your future building programs, a wide choice of styles is available in auditorium chairs, school desks and seats, church or chapel pews and wood furnishings, transportation seating, and portable folding or semi-folding chairs.

Whatever your requirements, you'll find "American" seating equipment unexcelled in durability, comfort and convenience—and outstanding in beauty of design. Each "American" product is tested by the most thorough and rigorous methods.

During the war American Seating Company gained new, valuable experience in building aircraft pilot seats; tank seats; recreation and assembly room chairs; mess tables and chairs for the Navy and Maritime Commission; and many other products used by our armed forces throughout the world.



1. American Bodiform Auditorium Chair No. 12-001
2. American Universal Better Sight Desk No. 333
3. American Portable Chair No. 643
4. American Steel Folding Chair No. 44
5. American Bus Transportation Seat No. 1221
6. American Church and Chapel Pew No. 9592

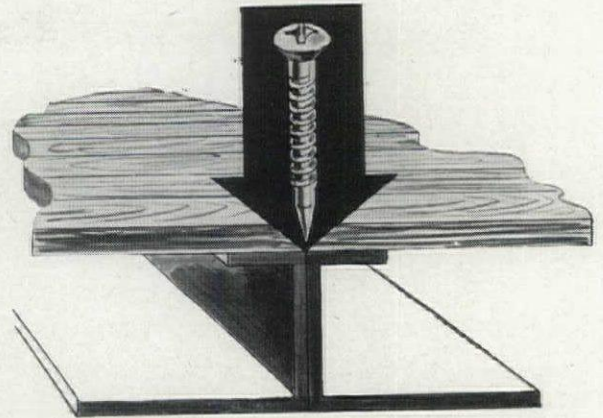
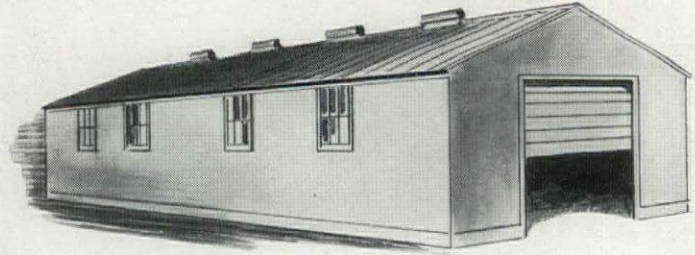
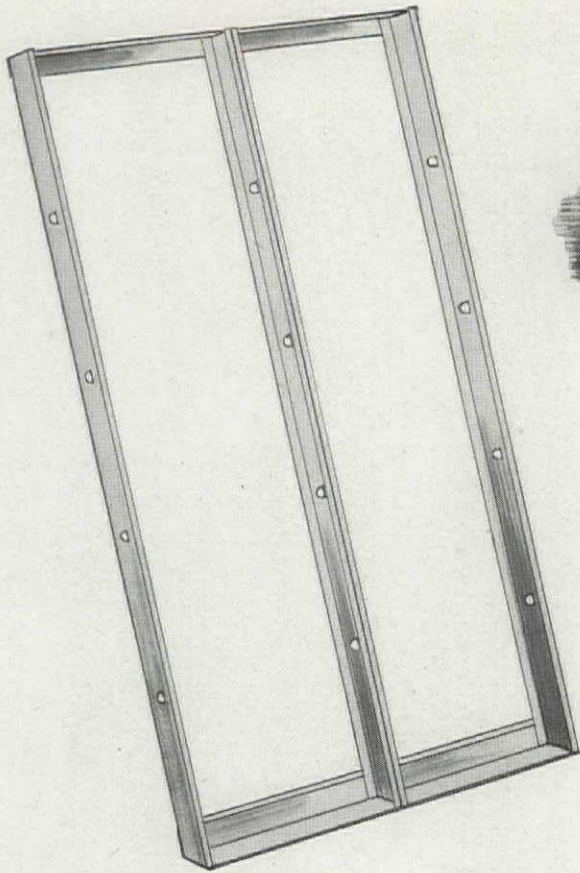


American Seating Company

GRAND RAPIDS, MICHIGAN

WORLD'S LEADER IN PUBLIC SEATING

Manufacturers of Theatre, Auditorium, School, Church, Transportation and Stadium Seating  
Branch Offices and Distributors in Principal Cities



## SPEED PLANS WITH STEEL FRAMES

### Better-Built Buildings To Aid Tomorrow's Expansion

TODAY, the test . . . in theatres of war . . . tomorrow, ready to step into your blueprints with greater flexibility of design and many other benefits to architects, builders, and building-supply dealers . . . that is the background and the forecast of EVERWEAR Steel-Frame Construction.

This simplified method of building-construction uses patented, welded-steel channels in the form of quickly-erected, steel panel-frames in standard arrangements to accommodate wall-surfaces, door-openings, or window-spaces. Only tools needed for assembly are hammer, wrench, and screwdriver.

Among the many advantages of Steel-Frame Construction for better-built buildings are: Use of conventional building materials over the Steel Frames; no skilled help required; lowest-cost means for making additions to buildings, even though Steel Frames were not originally used;

greater flexibility in design—not limited to standard lumber lengths; foundation and framing are termite-proof; better insulation permitted; comparable in cost to conventional construction.

These prefabricated Steel-Frames will be made available in peace-time by "SOUTHERN STATES" an experienced, 30-year-old organization, and one of the largest in the building-materials industry, whose interlocking galvanized Steel Roofing, Steel Shingles, and many other building materials have established a reputation for quality.

You, as a progressive architect, builder, contractor, or building-supply dealer will want to complete your post-war plans with Steel-Frame Construction. Write today for our new booklet: "PREFABRICATED STEEL BUILDINGS."



General Offices: SAVANNAH, GA.

FACTORY-WAREHOUSES IN PRINCIPAL SOUTHERN CITIES

# Southern States

## IRON ROOFING COMPANY

The house of tomorrow for the mass market will have to provide automatic heat, hot water, and temperature control, quality facilities for cooking, food preservation, storage, laundering and drying clothes, washing and drying of dishes, disposal of garbage and waste, and the elimination of cooking odors.

ARCHITECTURAL FORUM  
 "Selling The Second Half Million"

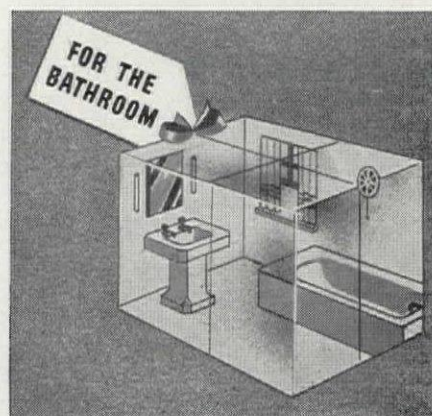
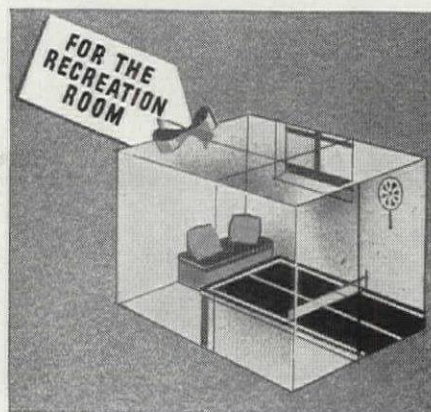
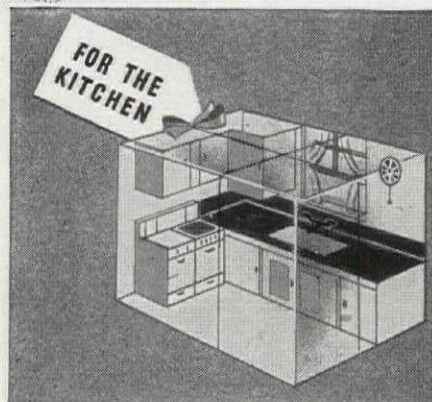


There is more to the story of ventilation than cooking odors, although that item is important. Tests have shown that in these cooking odors, for an average family of four—

"over 400 pounds of grease are deposited annually in the home."

VICTRON Ventilating Fans quietly, quickly eliminate this invisible air garbage—through correct, effective air movement. They deserve a first place in plans for housing, whether public or private.

*VICTRON Ventilating Fans, while not now available may be specified for post war building with assurance that space requirements will be the same as pre-war. Architects may refer to Sweet's Architectural File 1945.*



MANUFACTURERS OF VICTRON DESK AND PEDESTAL  
 FANS—VICTRON VENTILATORS—VICTRON

**VICTOR  
 PRODUCTS**

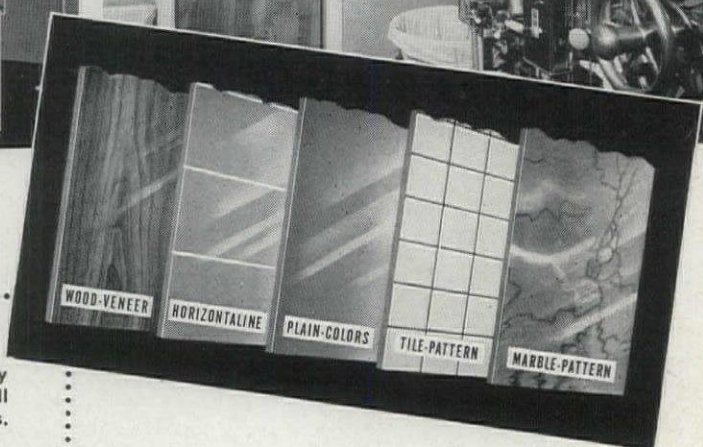
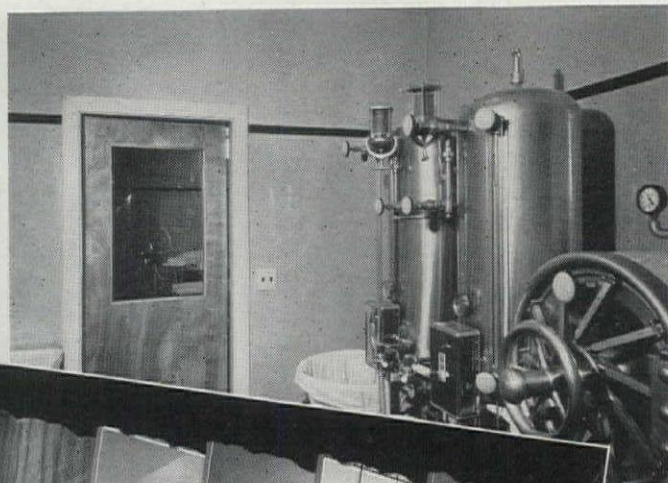
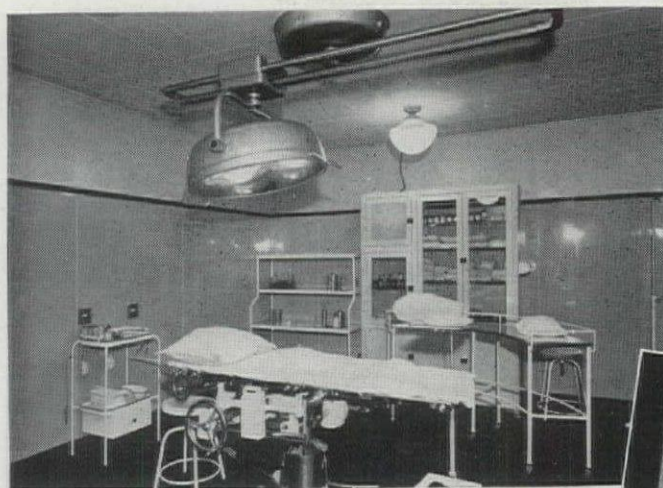


FANS—VICTRON AIR CIRCULATORS—VICTRON EXHAUST  
 PORTABLE IRONERS—VICTRON F.H.P. MOTORS

**ELECTRIC  
 INCORPORATED**

Dept. FA-545, 2950 Robertson Avenue, Cincinnati 9, Ohio

# Marlite ...HYGIENICALLY CORRECT... and so attractive, so economically maintained



We invite you to check with your colleagues — learn why they are enthused about Marlite plastic-finished wall panels. Here is a partial list of latest hospital installations.

TORNEY GENERAL HOSPITAL  
Palm Springs, Calif.

BRIGHAM CITY  
HOSPITAL  
Fruit, Utah

ST. JOSEPH MERCY HOSPITAL  
Sioux City, Iowa

WM. MCKINLEY  
MEMORIAL HOSPITAL  
Trenton, N.J.

METHODIST HOSPITAL  
Brooklyn, N.Y.

CAMP PENDLETON  
HOSPITAL  
Oceanside, California

AREA ENGINEER HOSPITAL  
Camp Gordon,  
Augusta, Ga.

AUBURN GENERAL HOSPITAL  
San Francisco, Calif.

HOSPITAL AREA,  
STAGING AREA  
Harahan, Louisiana

WOODROW WILSON  
GENERAL HOSPITAL  
Staunton, Virginia

MERCY HOSPITAL  
Chicago, Illinois

FRAMINGHAM  
GENERAL HOSPITAL  
Framingham, Mass.

SISTERS OF MERCY —  
ST. JOHN'S HOSPITAL  
Springfield, Mo.

ST. FRANCIS HOSPITAL  
Poughkeepsie, New York

WILKES-BARRE  
GENERAL HOSPITAL  
Wilkes-Barre, Pa.

FITZSIMMONS  
GENERAL HOSPITAL  
Denver, Colo.

NORTHINGTON  
GENERAL HOSPITAL  
Tuscaloosa, Ala.

ARMY GENERAL HOSPITAL  
Parma, Ohio

HOSPITAL EXECUTIVES everywhere recognize in plastic-finished Marlite, the ideal wall paneling for hospital interiors. While Marlite fully maintains the rigid standards of hospital hygiene and sanitation, it requires only minimum maintenance. For Marlite has the pioneer high-heat-bake finish ... a lustrous surface permanently sealed against the deteriorating attacks of cleansing agents, moisture, dirt, grease, acid and alkaline fumes. Easily and economically installed for either new construction or modernization, Marlite offers so wide a variety of colors and patterns that they are a practical, decorative asset in every part of the hospital. Marsh Engineers are ready to help you with plans and specifications and Marlite's full-color catalog is yours for the asking. Write today!

When MARLITE'S in, BLURMITES\* Are Out



\*Blurmites — destructive agents, harmful to the finish of many wall, ceiling, and counter surfaces.



# Marlite

REG. U. S. PAT. OFF.

## MARSH WALL PRODUCTS, Inc.

681 MAIN ST., DOVER, OHIO

*duty-free*

PLASTIC-FINISHED WALL PANELS • FOR CREATING BEAUTIFUL INTERIORS

# Get This FREE BOOKLET for your reference library



Tells how best to provide for using visual aids in school, church, hospital, and other buildings

VISUAL aids are now important teaching tools in almost every educational program . . . are destined to be as commonly used as textbooks. Your clients will recognize the wisdom of providing for the most effective, convenient use of visual aids in your plans for building or remodeling.

auditorium . . . gives experienced counsel on seating arrangements; locations for projector, screen, loudspeaker, cables, and wall sockets; electrical specifications; illumination and acoustics; projection booths; service and storage rooms; other important considerations.

Let this new, free handbook help you. It covers the requirements of both classroom and

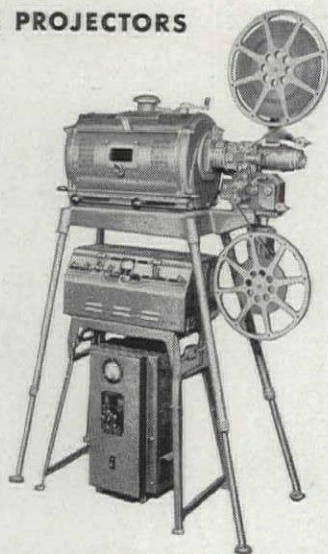
To get your copy, pin the coupon to your letterhead. No obligation!

## BELL & HOWELL PROJECTORS

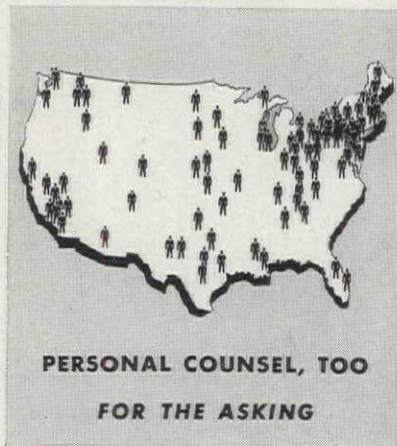


**FILMOSOUND** 16mm. sound-on-film projectors are overwhelmingly preferred by educators and other users. Built in a full range of capacities to meet every need for lastingly superior sound and picture reproduction.

**FILMOARC** 16mm. sound-on-film projector with powerful arc lamp illumination. Provides brilliant pictures and ample sound volume in large auditoriums.



Products combining the sciences of OPTics • electrONics • mechanICS



PERSONAL COUNSEL, TOO  
FOR THE ASKING

Near you is a member of the B&H staff of Special Representatives. Thoroughly informed on visual education, he is able and willing to help you work out any related problem. Get acquainted with him now . . . he'll urge you to ask for his aid at any time. Send the coupon to learn his name.

Bell & Howell Company, Chicago; New York; Hollywood; Washington, D. C.; London. Established 1907.

★ ★ ★  
Buy and Hold More War Bonds

BELL & HOWELL COMPANY  
7173 McCormick Road, Chicago 45

Please send, without obligation ( ) copy of *Architects' Visual Equipment Handbook*; ( ) name of nearby B&H Special Representative; ( ) Details about Filmosounds and Filmoarc.

Name.....

Address.....

City..... State.....

FA-7-45

PRECISION-MADE BY



# Bell & Howell



# PREVIEW

## of POST-WAR EQUIPMENT



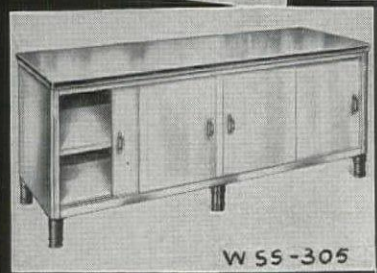
WSS-266-H



DSS-245



BMS-1148



WSS-305

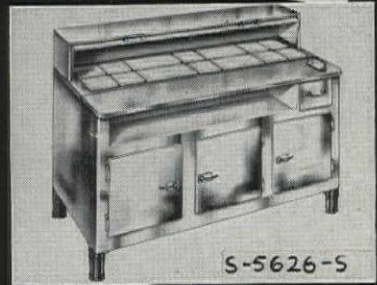
These items and many more are the results of extensive planning and designing by our engineering specialists to give YOU the last word in efficiency and economy in YOUR post-war kitchen. We have been busy planning for months, and when wartime restrictions are lifted, you can depend on SOUTHERN for all the advantages of new design and construction. It's not too early to consider your post-war replacement and modernization needs now.

We invite your inquiries and orders now for complete "Custom-Bilt by Southern" installation and also individual items, scheduled for delivery when production can be resumed.

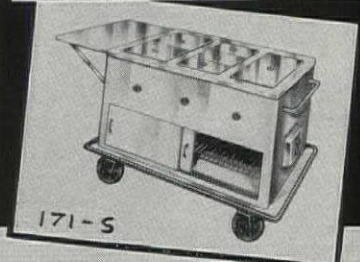
Write us today.



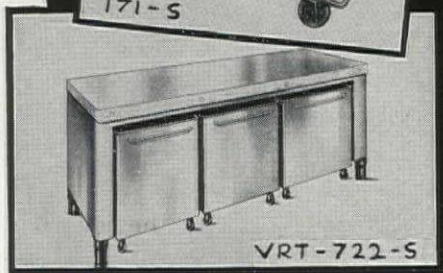
RS-260



S-5626-S



171-S



VRT-722-S

A few items are available now on WPB approval

### Southern EQUIPMENT CO.

5017 SOUTH 38TH STREET ST. LOUIS, MISSOURI  
OFFICES: DENVER - DALLAS - MIAMI - BOSTON - PITTSBURGH

"Custom-Bilt by Southern" to your individual needs



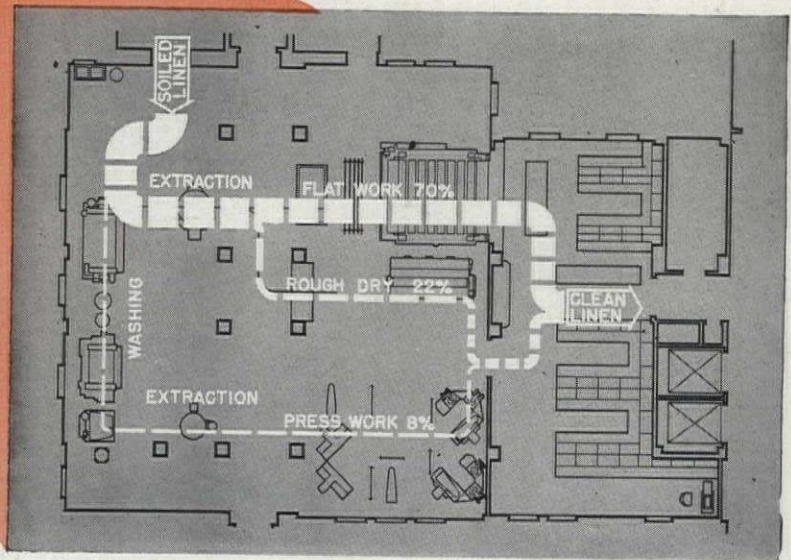
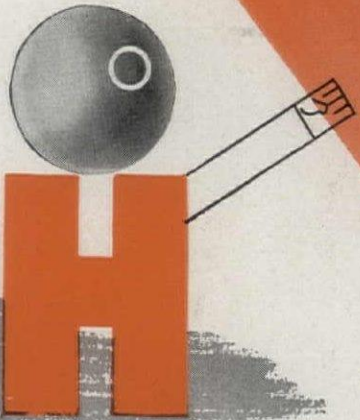
# 3-FOLD

## LAUNDRY EQUIPMENT SERVICE



- 1 SURVEYS
- 2 LAYOUTS
- 3 COST DATA

FOR THE ARCHITECT



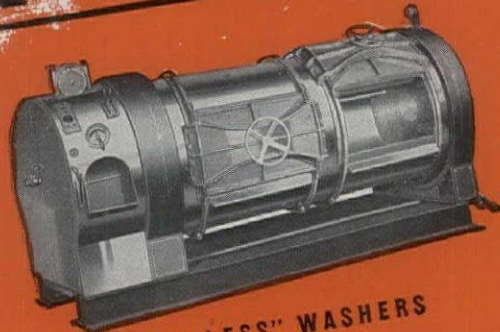
Selecting the proper equipment to insure maximum output and lowest operating expense in the institutional laundry — and laying out the floor plans to provide greatest convenience and economy in operation — is an engineering application project which involves a close study of the requirements. Hoffman engineers are well equipped to undertake this study in collaboration with the architect or consultant. Experienced engineers are available to survey the present facilities at the institution; modernized laundry layouts will be furnished gladly without charge. Full details as to average costs, floor space requirements, productive capacity, installation data, etc., are immediately available. A call to Hoffman will speedily

bring a competent engineer who will assist in all details of laundry planning. If desired he will furnish complete plans and specifications for the entire laundry machinery project. Hoffman builds an extensive line of laundry machinery. Each Hoffman machine is designed for maximum output of high quality work at lowest operating expenses per pound of linen. The line has been modernized and expanded and includes machinery built especially for the institutional laundry. Hoffman products are designed and built by skilled engineering and production staffs trained in the Hoffman tradition of high quality. Hoffman performance standards are well known.



# EQUIPMENT

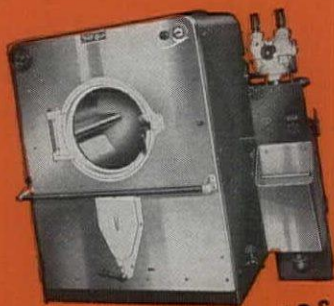
# OF EVERY



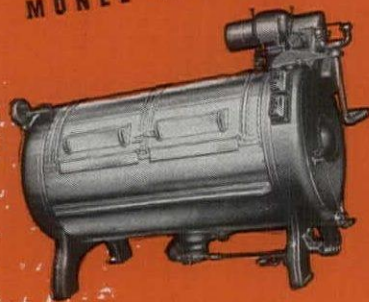
"SHELL-LESS" WASHERS



EXTRACTORS



MONEL WASHERS

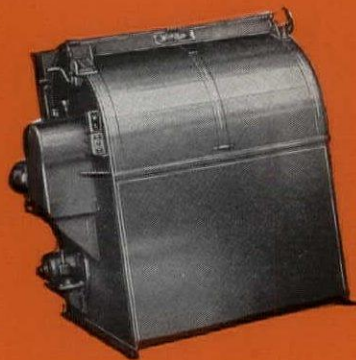
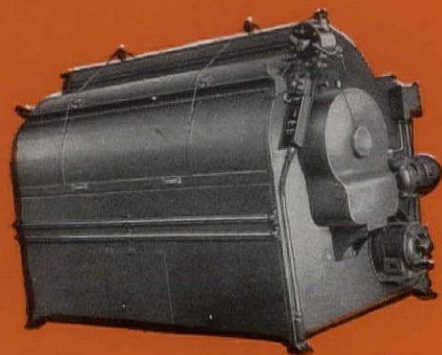


Hoffman "Shell-less" Washers — both side-loading and end-loading types — deliver poundage equal to that obtainable from 2 standard washers of equivalent size. They save washing time and washroom space. Hoffman also builds conventional monel washers from 24-inch to 42-inch diameter.

Hoffman high speed extractors are known throughout the laundry industry for rapid starting and stopping; maximum extraction; low power cost; convenience of control; sturdy, durable construction. Built in 17-inch to 60-inch diameters.

# FOR YOUR EVERY

# ...SIZE AND TYPE



## TUMBLERS

Hoffman laundry tumblers are once-through, down-draft, reversing cylinder driers of advanced design. They are fast-drying, yet they produce sweet-smelling, soft, fluffy work — in ideal condition for use. Open end and side-loading. Built in a full range of sizes and types.

## FLATWORK IRONERS

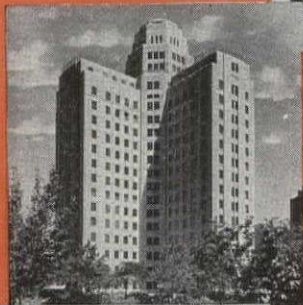
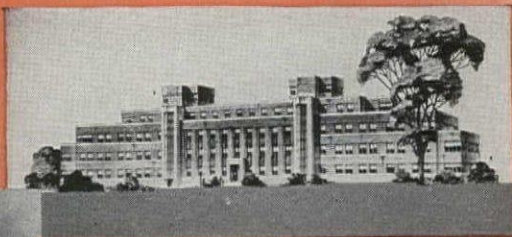
Hoffman "Straight-Line" flatwork ironers occupy much less floor space than conventional machines of equal productive capacity. NO ROLLS — instead, a continuous apron moves the work across a flat-topped steam chest. Also cylinder ironers in 50, 75 and 100-inch widths.



# ...LAUNDRY PROJECT

ALSO Wood Laundry Washers — 30-inch to 54-inch cylinder diameters — open pocket, Pullman type and Y-pocket machines. Hoffman also manufactures laundry truck tubs, folding tables, soap tanks and other accessories; 2-speed washers for blanket washing, curtain and blanket driers and dry cleaning units and garment pressing machines. In the extensive line of Hoffman equipment you'll find the right machine to solve every production problem.

**CALL  
HOSPITALS**



1. Rome and Murphy Memorial Hospital, Rome, N. Y.
2. Wesley Memorial Hospital, Chicago, Ill.
3. Central Michigan Community Hospital, Mt. Pleasant, Mich.
4. Memorial Hospital for Treatment of Cancer, New York
5. Delaware Hospital, Wilmington, Del.

**FOR REPORTS OF THEIR EXPERIENCE  
WITH HOFFMAN EQUIPMENT & SERVICE**

Alexian Brothers Hospital, Signal Mountain, Tenn.  
Barnes Hospital, St. Louis, Missouri  
Beverly Hospital, Beverly, Mass.  
Charlotte Memorial Hospital, Charlotte, N. C.  
Henry Ford Hospital, Detroit, Michigan  
Lourdes Hospital, Binghamton, N. Y.  
McLean Hospital, Waverly, Mass.  
Memorial Hospital, Pawtucket, R. I.  
Mercy Hospital, Janesville, Wisconsin  
Millard Fillmore Hospital, Buffalo, N. Y.  
Roosevelt Hospital, Metuchen, N. J.  
Roosevelt Hospital, New York, N. Y.  
St. Francis Hospital, Waukegan, Illinois  
St. Therese's Hospital, Waukegan, Illinois  
Syracuse General Hospital, Syracuse, N. Y.  
Tarrytown Hospital, Tarrytown, N. Y.  
United Hospital, Portchester, N. Y.  
Utah Valley Hospital, Provo, Utah  
Westchester Square Hospital, Bronx, N. Y.  
South Nassau Communities Hospital, Oceanside, L. I.



**TO HELP YOU PLAN YOUR CLIENT'S LAUNDRY**

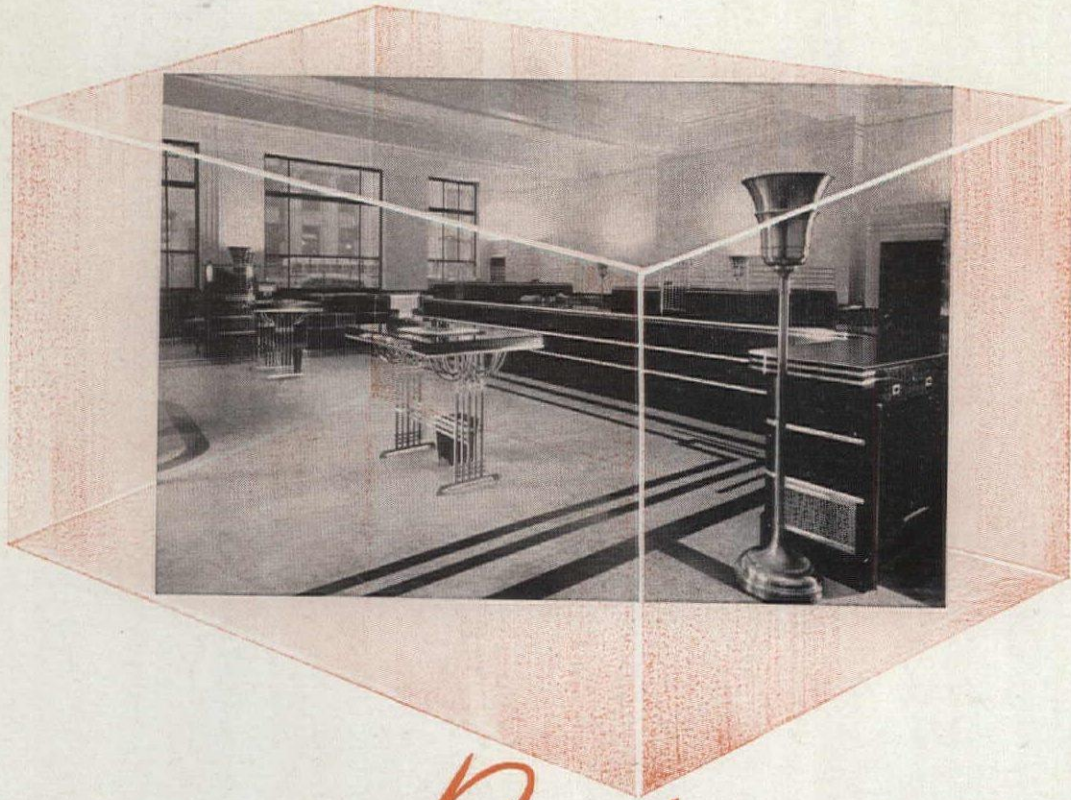
From an operating standpoint, the institutional laundries installed by Hoffman are notably successful. Hoffman laundry layouts keep the work moving smoothly forward without retracting of steps — provide highest output with a minimum of labor to tend the machines — save on laundry supplies and lengthen the life of linen. When Hoffman prescribes for the hospital laundry, the patient makes a quick recovery. For a single replacement machine or a complete laundry — call Hoffman — to plan your client's laundry!

**CALL  
HOFFMAN**

**U. S. HOFFMAN**

**MACHINERY  
CORPORATION**  
105 Fourth Ave., New York 3, N.Y.

**COMPLETE LAUNDRY EQUIPMENT SERVICE FOR THE INSTITUTION**



## THE FROZEN *Beauty* OF FORMICA!..

**I**magination could hardly ask for lovelier colors than Formica offers, nor greater smoothness, nor richer appearance as wainscot, column covering, and panelling for entrances and interiors; and as tops for tables, fixtures and other wearing surfaces.

Yet chemistry has frozen this beauty into every Formica sheet permanently and made it proof against every enemy beauty can have. Formica is much too hard to be worn or dulled by many years of ordinary wear even when used as a table surface.

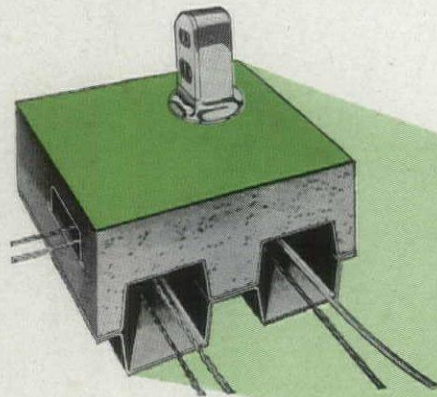
The sun does not fade its colors, and they do not wear off. Formica does not check, or chip, or crack, or blister. Food and fruit juices, mild medicines and chemicals, water, alcohol, and burning cigarettes do not spot or stain it.

THE FORMICA INSULATION COMPANY, 4637 SPRING GROVE AVE., CINCINNATI 32, OHIO



## SPECIFICATION:

Keep floor plans fluid.  
Electrical requirements and  
interior partitions  
subject to frequent change.



Looks like a terrific technical headache, doesn't it?

It's a specification that is never written as such, but is, nevertheless, a constant factor in modern buildings.

Robertson Q-Floors are constructed so that the whole floor area is potentially an electric outlet. Steel cells are connected by crossover raceways. An electrician can easily and quickly drill in any six-inch area and install an outlet—for a production machine or an office machine. Floor plans stay fluid.

So far as the electrical future goes, a Q-Floor will stay limitlessly modern. Q-Floors in any building remove all worries about increasing mechanical demands. You can

change an outlet or add another in a matter of minutes, anywhere, anytime—and you don't dig a trench to do it.

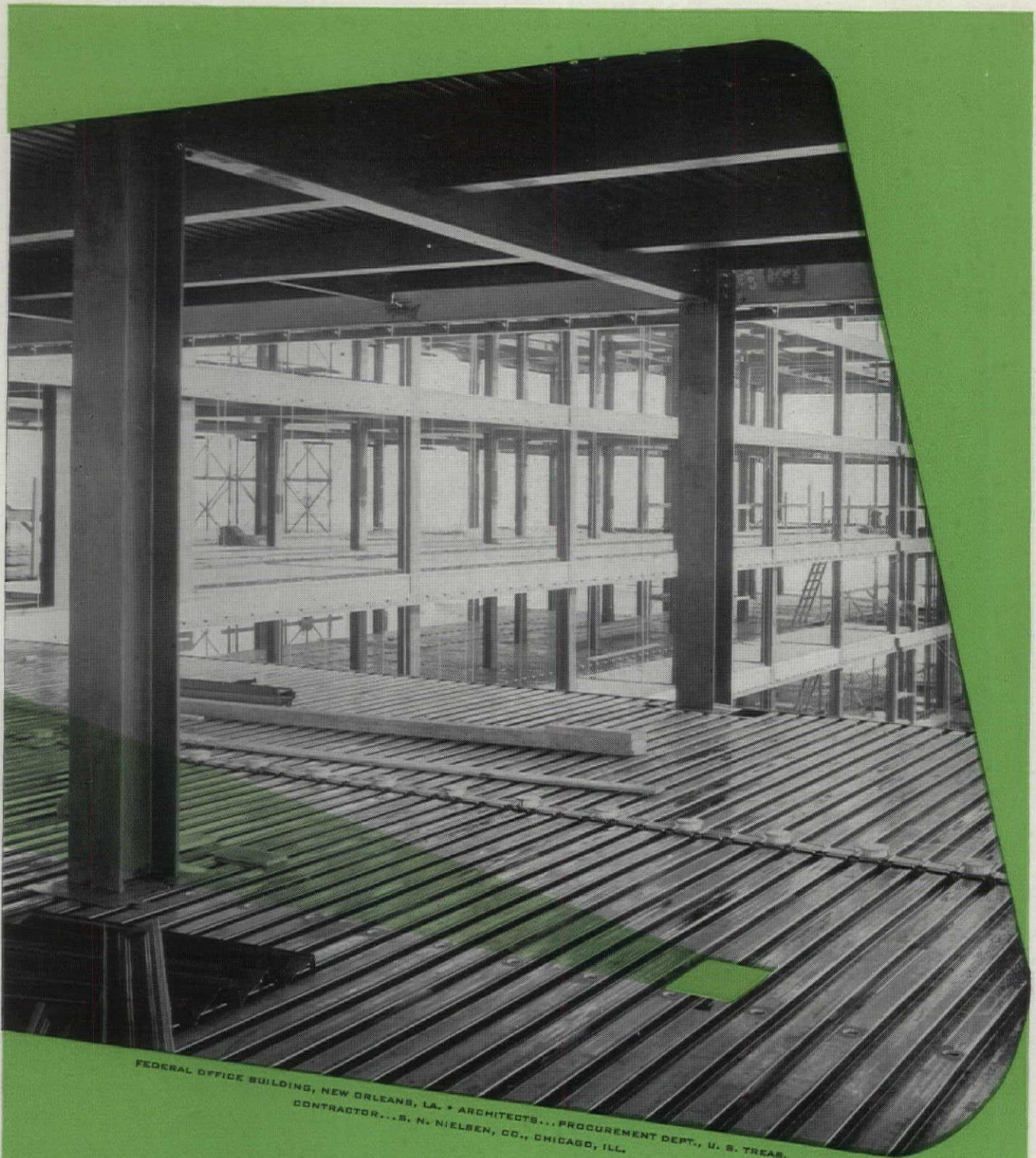
Naturally, you might guess the cost of Q-Floors is out of line. Not a bit. In fact, they have many structural advantages which favorably affect construction time and cost.

Two men can lay 32 square feet of Q-Floor in thirty seconds. The floors can be completed almost as soon as the structural frame. No wet materials cause delay. The Q-Floor immediately becomes a working platform for all other trades. Installation is quiet, clean, fireproof, with no shoring or forms. Q-Floors are light in weight which makes possible the significant saving of lighter framework.

A Robertson representative will be glad to place more specific reference at your disposal and discuss the details of Q-Floors in general, or in relation to your current job. Electrical Fittings for Q-Floors are handled by General Electric construction materials distributors. For Q-Floor literature, write H. H. Robertson Co.

TIME-TESTED—OVER 3000 ROBERTSON Q-FLOOR INSTALLATIONS.

THE EASIEST THING FOR A BUILDER TO FORGET—  
*Floors are what a building is for*



FEDERAL OFFICE BUILDING, NEW ORLEANS, LA. • ARCHITECTS... PROCUREMENT DEPT., U. S. TREAS.  
CONTRACTOR... S. N. NIELSEN, CO., CHICAGO, ILL.

# Q-FLOORS

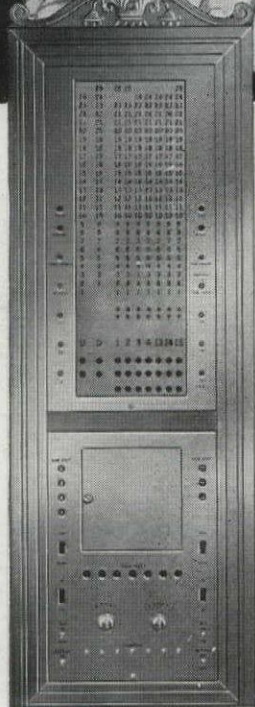
## H. H. ROBERTSON CO.

2406 FARMERS BANK BUILDING  
PITTSBURGH 22, PENNSYLVANIA



OFFICES IN 45 PRINCIPAL CITIES  
WORLD-WIDE BUILDING SERVICE

# OTIS *Dispatching* FOR IMPROVED ELEVATOR SERVICE



Dispatching Panel: Indicates position and direction of travel of the car and the location of waiting passengers.

Otis Elevator dispatching methods and equipment can help correct congested elevator traffic conditions.

This scientific system of elevator operation and dispatching provides the highest quality and maximum quantity of service for a given number of elevators.

Otis dispatching is your assurance that every car is doing an equal share—that the flow of traffic is evenly distributed over the entire plant.

So, when it comes to new elevator installations or getting more work from your present equipment, investigate the possibilities offered by Otis dispatching equipment.

Your Otis representative is ready now to help you and your Architect plan the correct type of dispatching system best suited to your needs. For the finest in vertical transportation tomorrow, call your Otis representative TODAY.

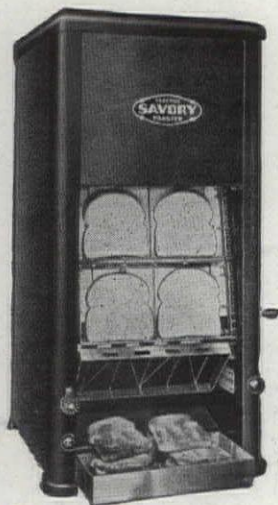




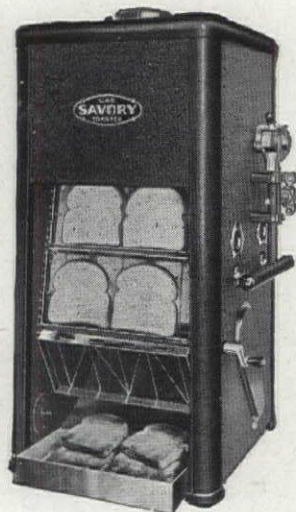
# 3 TO 36 SLICES PER MINUTE WITH SAVORY TOASTERS

In general use at Army camps, on ships, at naval training stations, in schools, hospitals and institutions.

Model CT-2, all-electric, 360 slices per hour.



Model PD, gas-operated, 360 slices per hour.



Model CT-4, all-electric, 540 to 720 slices per hour.

Model PQ, gas-operated, 540 to 720 slices per hour.



*Ask your dealer or write us for details TODAY.*

# Savory

EQUIPMENT, Inc.

137 Pacific Street, Newark 5, N. J.

**SOLD BY LEADING DEALERS EVERYWHERE**



## Beneath the surface a lasting framework of steel

Think in terms of  
**STRAN  
STEEL**

SERVING TODAY IN THE  
QUONSET HUT

Stran-Steel, featuring studs and joists with a patented nailing groove, brings permanence, rigidity and fire-safety to multiple-housing projects, administration buildings, barracks, hospitals, schools and other governmental structures.

Stran-Steel framing systems provide a uniformity of material that assures sag-proof, warp-free strength—reducing maintenance, eliminating plaster cracks and sagging floors. They are adapted readily to efficiency in design, and enable versatility in arrangements.

Leading architects and engineers are thinking in terms of Stran-Steel to protect the buildings of tomorrow. Explore the lasting values inherent in Stran-Steel. Plan and build in steel for lasting strength.

## GREAT LAKES STEEL CORPORATION

*Manufacturer of the Famous Quonset Hut for the U. S. Navy*

**STRAN-STEEL DIVISION • 37<sup>TH</sup> FLOOR PENOBSCOT BUILDING  
DETROIT 26, MICHIGAN**

UNIT OF NATIONAL STEEL CORPORATION



# THE FEDERAL ARCHITECT

1604 K St., Washington 6, D. C.

Address all communications  
to and make checks in favor  
of The FEDERAL ARCHITECT

Vol. 14  
No. 1

APRIL - JULY, 1945

E. B. MORRIS  
*Editor*

E. M. KILERLANE  
*Managing Editor*

## Table of Contents

|   |    |
|---|----|
| Editorial .....                                   | 19 |
| War Department .....                              | 21 |
| Navy Department .....                             | 24 |
| U. S. Coast Guard .....                           | 34 |
| Public Buildings Administration .....             | 36 |
| Veterans Administration .....                     | 40 |
| Commission of Fine Arts .....                     | 47 |
| National Capital Park & Planning Commission ..... | 48 |
| National Park Service .....                       | 49 |
| Department of Agriculture .....                   | 51 |
| Tennessee Valley Authority .....                  | 52 |
| National Housing Agency .....                     | 54 |
| U. S. Public Health Service .....                 | 56 |
| Department of Interior .....                      | 57 |
| Municipal Architect (Washington, D. C.) .....     | 59 |
| Architect of the Capitol .....                    | 60 |
| Department of Commerce .....                      | 61 |
| William Randolph Talbott .....                    | 63 |
| Index to Advertisers .....                        | 64 |

Entered as second class matter at the postoffice in Washington, D. C., July 1936; additional entry Baltimore, Md., under act of March 3, 1879. Published quarterly for the Association of Federal Architects, 1604 K Street, N. W., Washington, D. C. Subscription price \$1.00 per year. Single copy 35 cents.



Glastone was selected for the walls of fifteen stations in the Chicago subway. More than 24,000 square feet of the glass faced masonry unit were used.

## GLASTONE

### New Structural Glass Unit

Glastone is a load-bearing, lightweight concrete masonry unit which is faced with Vitrolite structural glass. It offers distinctive advantages through its physical properties, its non-fading colors and a sparkling surface that is easily cleaned.

Glastone has been thoroughly tested in a wide variety of installations during the past six years. Its compressive strength is better than two thousand pounds per square inch and its weight is only ninety pounds per cubic foot. Although Glastone is intended primarily for exterior use, this revolutionary glass-faced masonry unit is ideally suited for interior installations in which a hard, smooth finish is needed.

Glastone is produced in regular Vitrolite colors. It is made to order according to architects' specifications in units up to eight square feet in surface area and in thickness as required down to 1½ inch.

Glastone was developed by Libbey-Owens-Ford Glass Company, Toledo, Ohio, which licenses its manufacture. Complete information and lists of producers furnished on request.

### THE CAST STONE INSTITUTE

Specialties Division

2135 Queens Chapel Road, N. E.

Washington 18, D. C.

## CARTHAGE MARBLE CORPORATION

CARTHAGE, MISSOURI

Quarriers of OZARK GRAY VEINED and OZARK TAVERNELLE marbles. Quarriers and finishers of CARTHAGE EXTERIOR MARBLE. Fabricators of domestic and foreign marbles.

➡ OFFER WITHOUT COST ⬅

### An "ARCHITECTS' PORTFOLIO"

containing 26 plates showing installation methods for marble in office buildings, banks and other public structures, giving details of floors, wainscots, counters, stairs, toilet and shower stalls and the like will be sent on request

FREE

FULL CONE      FLAT SPRAY      HOLLOW CONE

## SPRACO NOZZLES

Write for NOZZLE CATALOG to  
**SPRAY ENGINEERING CO.**  
 126 CENTRAL STREET • SOMERVILLE 45, MASS.



# THE FEDERAL ARCHITECT

Published for the Association of Federal Architects  
1604 K Street, Northwest, Washington, D. C.

■ MANY years ago the Government service had few Construction Departments in the several Government Agencies. As we look back to the early part of the century, the "S. A.," or Supervising Architect's Office is recalled. Located in the Treasury Department Building at 15th Street and Pennsylvania Avenue, this office was charged with the design, plan, maintenance and repair of Federal Buildings. Later, when the Veterans Bureau was in its embryonic state, the Supervising Architect's Office was one of several departments to prepare plans for the Veterans Hospitals. However, at a later date, this department became a part of the Procurement Division and is now the construction portion of the Public Buildings Administration.

Then there was the Construction Division of the Quartermaster Corps. This office, also, as the years went by, lost its identity with its work being vested in other branches of the War Department.

Likewise, with some of the other Construction Departments, many changes and reorganizations in Government, due to the war, have brought about reallocation of work, the disappearance of some and establishment of new offices to take their place. Yet there are some, such as Yards and Docks of the Navy Department; Office of the Architect of the Capitol; Office of the Municipal Architect in the District of Columbia Government and others which have retained their identities.

Now with the war in the Pacific at an end, the problem of reconversion must be considered; aid must be extended to returning disabled veterans; and help must be proffered

to returning veterans and displaced war workers seeking employment. Also, since Pearl Harbor Day, many men who were in the Construction Departments of the Government and those who were outside the service but dealt with it in various ways have lost trace of old acquaintances.

Again, the changes and expansion of activities wrought through the years have occasioned confusion to those who served in the Armed Forces and those who have continued on the home front.

With these thoughts in mind, it was believed appropriate at this time to publish a "Directory" issue of THE FEDERAL ARCHITECT magazine.

To the returning servicemen, formerly connected with the Government Construction Departments, as they read the personnel lists of the several agencies, old co-workers will be located. To those who were not in the Government service but dealt with it—we refer here to the many manufacturers' representatives who in furtherance of the manufacturing business likewise rendered valuable assistance to the Government—it is our sincere wish that they, in taking up their former pursuits, will find some assistance in locating former contacts.

For many years representatives of Government Agencies have interchanged ideas on materials, their fabrication and installation, in order that the Government could secure the best in construction. Such exchange of advice is a healthy and beneficial custom, and it is hoped this issue will assist and further this practice.



*PHILADELPHIA NAVAL HOSPITAL*

*Bureau of Yards and Docks*

*Navy Department*

*Karcher and Smith*

*Architects*

# OFFICE OF THE CHIEF OF ENGINEERS

## WAR DEPARTMENT

**T**HE construction activities of the Office of the Chief of Engineers are widespread and under several divisions. The chief responsibility for the design of buildings is in the Military Construction Branch of the Engineering and Development Division.

The administrative heads of the Office of the Chief of Engineers follow:

Chief of Engineers:  
Lieut. General Eugene Reybold.

Deputy Chief of Engineers:  
Major General Thomas M. Robins.

Director of Military Construction:  
Brig. General J. S. Bragdon.

### *Engineering Division:*

Chief—Lt. Colonel L. C. Urquhart.  
Executive Officer—Major F. S. Poorman.  
Executive Assistant—Major Wm. E. Jeffrey.  
Consultant for Architecture—L. M. Leisenring.

### *Structures Branch:*

Chief—Homer F. Carey, Engineer.  
Ass't Chief—N. D. Monfalcone, Architect.

### *Architectural Design Section:*

Chief—Wm. M. Riley, Architect.  
Unit Chiefs—H. R. Woodward, Architect.  
Leon Julius, Architect.  
Choy G. Wy, Architect.

### *Special Projects Section:*

Chief—John F. Wolfe, Architect.  
Architects: David F. Bauer  
Irving Dickstein  
H. N. Richardson  
M. L. H. Boring

Additional Architects and Architectural Draftsmen in the Structures Branch:

|                     |                        |
|---------------------|------------------------|
| Brown, John J.      | Montgomery, H. E.      |
| Erisman, Wm. P.     | Pettit, Charles G.     |
| Harris, Beverly     | Raskin, Joseph         |
| Holt, Raymond S.    | Smith, Wm. M.          |
| Humphrey, Wm. E.    | Spector, Victor B.     |
| Jones, Frederick W. | Stewart, James E.      |
| Lange, Henry W.     | Van Brunt, E. Stanley, |
| Matthews, Shaw H.   | Jr.                    |
| Maurer, Otto        | Vietor, John H.        |
| Menke, Eric F.      | Wilson, Philip P. S.   |
| Miller, T. W.       | Woolley, Harry T.      |

### *Specifications and Estimating Branch:*

Chief—H. B. Zackrisson, Engineer.  
Ass't Chief—Alfred Kurtz, Architect.

### *Technical Control Section:*

Chief—C. S. Dean, Engineer.  
Architects: Dhein, E. H.  
Mason, C. R.

### *Estimating Section:*

Chief—T. M. Rachele, Architect.  
Architects: Kelt, B. W.  
Mead, C. W.  
Wowra, H. P.

### *Specifications Section:*

Chief—Max Barth, Architect.  
Architects: Brightly, H. S.  
Calisch, H. E.  
Grochenaur, P.  
Grotz, W. A.  
Herman, R. A.  
Parimeter, E.  
Segal, J.

### *Planning Branch:*

Chief—Leon H. Zach, Landscape Architect.  
Ass't Chief—A. S. Kruse, Landscape Architect.  
Architects: Groll, E.  
Hutchison, D.

### *Utilities Branch:*

Chief—Jas. W. Engle, Engineer.  
Ass't Chief—John R. Gramm, Engineer.  
Chief of Mechanical Section—F. Simpson, Engineer.  
Chief of Electrical Section—A. J. Buckley, Engineer.  
Chief of Plumbing Section—A. R. Geiger, Engineer.  
Architects: Brown, W. M.  
Puls, C. H.  
Chief of Fire Prevention Section—F. E. Robbins, Architect.  
Architects: Jester, L. W.  
Legg, R. W.

### *Paving and Railroads Branch:*

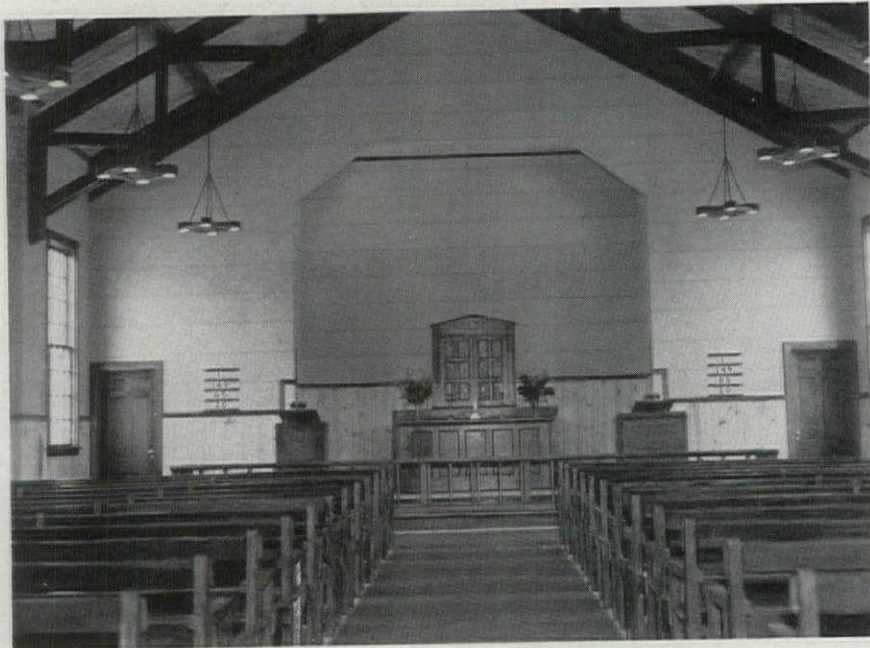
Chief—Gayle McFadden, Engineer.

### *Scope of Work—Engineering Division:*

The Engineering Division for military construction activities: establishes engineering policies and design criteria; prepares engineering manuals, basic and guide specifications, and typical or standard plans; determines and interprets using service requirements affecting design; prepares or supervises preparation of engineering studies and preliminary plans on specific projects; prepares cost estimates used for preliminary planning and the budgeting and allocation of funds; designs or supervises preparation of designs, plans and specifications, on projects selected in accordance with current policy; furnishes engineering consulting services to Engineer Field Offices, OCE Divisions and other War Department agencies; reviews and approves site selection reports



*Above: Regimental Chapel  
Exterior*



*Left—Regimental Chapel,  
Interior. Fitted for  
Protestant, Catholic  
and Jewish services*

*Corps of Engineers  
Architects*



and where warranted participates in field investigations on same; reviews and approves for OCE plans and specifications prepared by Engineer Field Offices or Architect-Engineers; inspects field construction; initiates research and test programs on construction materials, methods and designs; reviews for OCE, master plans for the future development of all Army installations; conducts engineering studies for development of plans and procedures to be used in demobilization planning; reviews and processes all specifications prepared in OCE; converts specifications of other services to Army, Joint Army-Navy and Federal Specifications; prepares plans for issue and controls publication and issue of specifications; establishes criteria for the use of critical materials and plans the conservation programs for OCE.

Since the reorganization of this office on a wartime basis, the buildings designed have been for the most part standard plans of temporary or semi-permanent construction. Many of them have interest, due to the difficulties overcome and the use of the simplest materials to give a certain effect.

While decentralized for emergency purposes, design for military construction will gradually be centralized in the Engineering Division of the Office of the Chief of Engineers; Division and District offices being maintained generally for administration and construction purposes.

*Office of the Chief of Engineers:*

War Department Building,  
21st Street and Virginia Ave., N. W.  
Washington 25, D. C.

*Office of the Chief of the Engineering Division:*

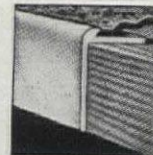
Temporary Building "H"  
23rd and "C" Streets, N. W.  
Washington 25, D. C.  
Telephone: REpublic 6700.



# SUPERIOR

TRADE NAME

# ALUMINUM TRIM



## Shipments of Superior Metal Trim Are Made Every Day



SUPERIOR is constantly on the alert utilizing new ideas and new fabricating methods, thus we are able to produce the best and most modern trims. Along with this, our old customers are assured at all times of quality workmanship, with personal interest extended to each, and our new customers too are given the same thoughtful consideration in the sequence of their orders. Your specification of SUPERIOR trim give your client the highest quality and best service now and for years to come. SUPERIOR fabricating and merchandising experience will prove valuable to you. For information write:

### YOUNGSTOWN MANUFACTURING, INC.

66-76 S. Prospect Street

Youngstown 6, Ohio

BRANCH OFFICES AND WAREHOUSES

- 263 W. PEACHTREE STREET, N. E., ATLANTA, GEORGIA
- 363 S. WALL STREET, COLUMBUS, OHIO
- 217-219 N. ALABAMA STREET, INDIANAPOLIS, INDIANA
- 510 ARCH STREET, PHILADELPHIA, PENNA.

*Distributors Throughout United States.*

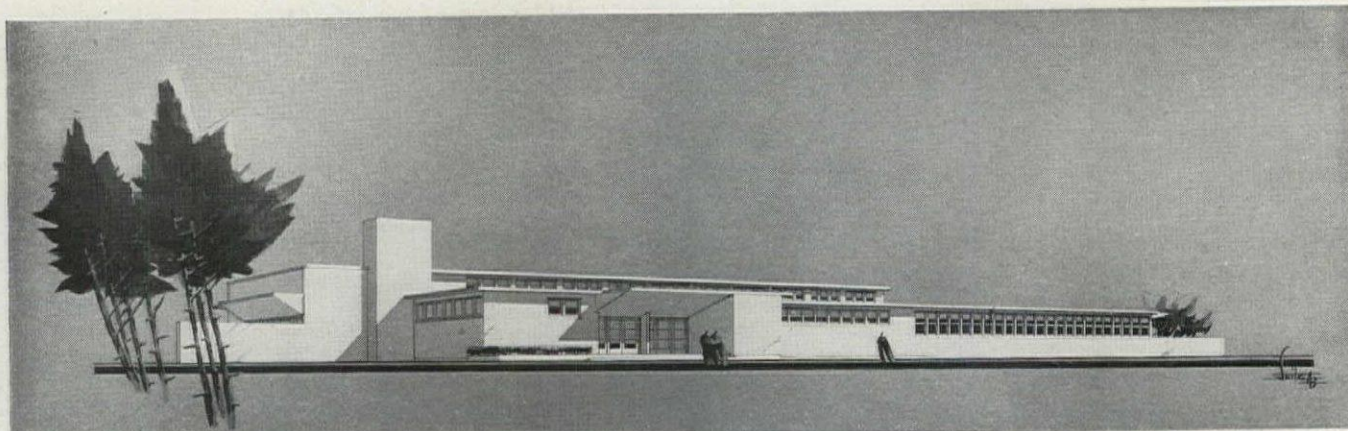
*Use this coupon if you wish.*

*Please send us literature.*

Your Name .....

Address .....

City..... State.....



100-man Officers' Mess

## THE BUREAU OF YARDS AND DOCKS OF THE NAVY DEPARTMENT

VICE ADMIRAL BEN MOREELL, *Chief of Bureau*

REAR ADMIRAL LEWIS B. COMBS, *Assistant Chief of Bureau*

**T**HE Bureau of Yards and Docks is responsible for the design and construction of all naval public works and public utilities, such as floating and graving drydocks, marine railways and building ways; harbor structures such as moorings, quay walls, piers and wharves; utilities such as power plants and heating, lighting, telephone, water and sewer systems; and all types of buildings and structures, including personnel buildings, shops, hangars, hospitals, radio towers, bridges, and all roads and walks. The Seabees, who constitute the combat-trained construction battalions of the Navy, operating ashore and afloat, frequently under the direct fire of the enemy, are a part of the Bureau and are under the direction of officers of the Civil Engineer Corps of the Navy. The Bureau is also charged with the inspection, maintenance, and repair of naval public works. It is in charge of the land transportation and weight handling equipment used by the Navy, including all vehicles and operators in navy yards and naval stations.

### PLANNING AND DESIGN DEPARTMENT

Rear Admiral W. H. Smith, CEC, USN, Director.

Captain E. H. Praeger, CEC, USNR, Assistant Director.

### DESIGN DIVISION

Captain E. H. Praeger, CEC, USNR, Design Manager.

Commander E. W. Thorson, CEC, USNR, Assistant Design Manager.

Lieutenant Commander C. E. Lewis, CEC, USNR, Liaison Officer.

Lieutenant G. E. Distelhurst, CEC, USNR, Liaison Officer.

Lieutenant Commander C. L. Pool, CEC, USNR, Liaison Officer.

Lieutenant Commander H. J. Byrne, CEC, USNR, Liaison Officer.

Lieutenant (jg) H. E. Phillips, CEC, USNR, Liaison Officer.

Lieutenant R. Z. T. Anthony, CEC, USNR, Liaison Officer.

Lieutenant D. R. Houck, CEC, USNR, Liaison Officer.

Lieutenant (jg) J. B. Flint, CEC, USNR, Liaison Officer.

Lieutenant Commander W. A. O'Leary, CEC, USNR, Liaison Officer.

Lieutenant R. K. Clark, CEC, USNR, Liaison Officer.

### DESIGN SECTION

J. T. Maguire, Chief Draftsman.

C. H. Trott, Assistant Chief Draftsman.

### Architectural Section

H. C. Sullivan, Architectural Section Head and Station and Building Layouts Section Head

Abernathy, K. G.

Acherman, C. F., Assistant Group Leader.

Adams, J. W.

Albert, J. J.

Allen, H. A., Assistant Group Leader.

Anderson, L. F., Group Leader.

Ash, T. E.

Baer, J. M.

Bassett, G. T., Group Leader.

Bierce, H., Model Maker.

Boutin, H. L.

Brannock, H. A.

Briley, W. K.

Brown, J., In Charge of Model Room.

Brown, W. B., Assistant Group Leader.

Caputo, M. V.

Carter, C. F., Group Leader.  
 Chotas, N. E.  
 Collins, R. E., Special Design Assistant.  
 Corey, J. E.  
 Crisp, M. L.  
 DeLaRosa, O. A., Group Chief.  
 Di Giacomo, S.  
 Dundin, J. E., Group Leader.  
 Dungan, J. H.  
 Dunlap, A.  
 Edwards, T. R., Group Leader and Assistant Group Chief.  
 Ellwanger, R. J.  
 Epstein, M.  
 Evers, C. E.  
 Galbraith, T. P.  
 Gilder, J. E., Assistant Group Leader.  
 Gochmauer, M.  
 Granberry, T. G., Assistant Group Leader.  
 Gustafson, A. A., Assistant Group Leader.  
 Hafner, D. O.  
 Hartig, K. W., Group Leader.  
 Harrer, A. F., Assistant Group Leader.  
 Henderson, H. L.  
 Hill, I. (Mrs.).  
 Jenkins, D. L.  
 Johnson, D. S., Group Leader.  
 Jorgenson, L.  
 Keller, C. J., Assistant Group Leader.  
 Kuhn, T. L.  
 Lamm, P. C.  
 Lawrence, A.  
 Leffson, E. F.  
 Love, L. V. (Miss).  
 Mackey, W. R. H.  
 Macpherson, R. D.  
 Matheson, J. N.  
 McDonald, A. F., Group Chief.  
 McGraw, J. S.  
 Meakin, H. W., Group Chief.  
 Millar, J., Group Chief.  
 Miller, A. J.  
 Minch, C. F., Assistant Group Leader.  
 Moore, N. G.  
 Morganstein, J. I.  
 Murphy, M. J.  
 Nichols, J. (Miss).  
 Nickel, R.  
 Nutter, J. B.  
 Page, H. A., Assistant Group Chief.  
 Parrish, H. L.  
 Penfield, E. E.  
 Plant, A. C., Group Leader.  
 Pope, T. A., Group Leader.  
 Powers, R.  
 Reinl, A. C.  
 Reynolds, W. H.  
 Roos, C. H.  
 Siebel, W. L., Group Chief.  
 Sobhy, I.  
 Sorenson, L. B.  
 Springman, J. W., Jr.  
 Steggall, R. E.  
 Stevens, R., Assistant Group Chief.  
 Suite, W. C., Group Leader.

Sullivan, H. C., Architectural Section Head and Station and Building Layouts Section Head.  
 Swales, S. F., Assistant Group Leader.  
 Swartout, R. L., Group Leader and Assistant Group Chief.  
 Taylor, W. R., Assistant Group Leader.  
 Thomas, E. D.  
 Waterman, T. T.  
 Waters, W. G.  
 Weber, B. A.  
 Welch, A. M.  
 White, G.  
 Whitehead, R. W.  
 Williams, J. W.

*Structural Section*

E. J. Collins, Structural Section Head

Anderson, M. G., Group Leader.  
 Bagdoyan, S. M.  
 Balsler, L. F., Group Chief.  
 Bennett, G. H., Group Leader.  
 Benschky, G. M.  
 Bertram, C. G.  
 Bowman, K. M.  
 Brieger, A.  
 Buck, R. S.  
 Burke, E. D.  
 Cobun, N. M.  
 Cohen, A. H.  
 Collins, E. J., Structural Section Head.  
 Conway, R. A.  
 Cooke, H.  
 Crook, M. D.  
 Daudt, C. F.  
 Dowling, L. E., Group Leader.  
 Duncan, V.  
 Durham, R. F.  
 Ellison, T.  
 Fram, P.  
 Gallagher, A. S., Group Leader.  
 Geisenderfer, P.  
 Hibbs, C. E.  
 Hobelman, C. G.  
 Hodge, H. E.  
 Hormann, H. E.  
 Horn, A. M., Group Chief.  
 How, F. W.  
 Hunt, K. C.  
 Isaacson, S. J.  
 Jasper, I.  
 Jelinek, G. H.  
 Joseph, L. W.  
 Kieferle, F. T.  
 Kilpatrick, G. A.  
 King, T. C.  
 Leder, A. F., Group Chief.  
 Lefferts, H. L.  
 Leipold, R. T., Group Leader.  
 Litton, H. C.  
 Lind, A. R.  
 Lundelius, K. J.  
 MacDonald, F.  
 Mare, N.  
 Mark, J. B.

Masi, F.  
 Merson, S.  
 Moore, F. E.  
 Murphy, B. D.  
 Murphy, J. J.  
 Mushinsky, A.  
 Ormsby, E. B.  
 Ousey, H. H.  
 Paulsen, C. E.  
 Peto, F.  
 Pitcher, B. M., Group Leader.  
 Porterfield, A. T.  
 Quinn, N. C.  
 Raymond, G. C.  
 Raymond, J.  
 Raywid, L., Group Leader.  
 Riley, E. W.  
 Ross, J. A.  
 Schwarm, J. S.  
 Seeck, R. H., Group Leader.  
 Shaffer, M. B.  
 Smariga, J. E.  
 Soffen, A., Group Leader.  
 Somers, W. F.  
 Staub, W. F.  
 Steuart, F. R.  
 Summers, W. C.  
 Sutter, J. P.  
 Topalian, S. P.  
 Ure, J. A.  
 Van Nostrand, G., Group Leader.  
 Wentz, C. A.  
 Whitehead, O. G.  
 Wike, W. B.  
 Zimmerman, J. U.  
 Zirin, M.

*Electrical Section*

E. B. Judson, Electrical Section Head

Allen, F. L.  
 Anderson, R. R.  
 Bettius, M. (Mrs.).  
 Brehmer, C. R.  
 Brown, W. A.  
 Daniel, R. G.  
 Duvall, H. M.  
 Evelyth, L. N., Group Leader.  
 Gleeson, W. J.  
 Harmon, F. L.  
 Inscoc, E. E., Group Chief.  
 Judson, E. B., Electrical Section Head.  
 Karikas, J. A.  
 Lewis, J. H.  
 McLaughlin, M.  
 Miskelly, W. T.  
 Norwood, R. B.  
 Palm, J. F.  
 Parham, W. C., Group Leader.  
 Schwartz, E. R.  
 Strother, G. W., Group Chief.  
 Taylor, A. S.  
 Thomas, G.  
 Twitt, F. S., Group Leader.  
 Wilhelmini, R. E., Group Leader.

*Mechanical Section*

M. S. Cooley, Mechanical Section Head

Behnke, C. H.  
 Byrnes, J. T.  
 Chambers, H. C.  
 Cooley, M. S., Mechanical Section Head.  
 Cornell, E. B., Group Leader.  
 Daniel, A., Group Leader.  
 Engel, L.  
 Foresman, W. S.  
 Haller, H. W., Group Leader.  
 Herrmann, L. S.  
 Krauss, F. C.  
 Maurer, L. L.  
 Montovan, C. J.  
 Northon, L. I.  
 Palmer, J. W.  
 Palmer, L. B.  
 Richmond, S. L., Group Leader.  
 Rinehart, W. R.  
 Robinson, G. M.  
 Sniscak, J. L.  
 Starke, J. E.  
 Sweeney, A. E.  
 Taylor, A. C.  
 Willette, C. O.  
 Young, S. F.  
 Zuckman, E.

*Sanitary Section*

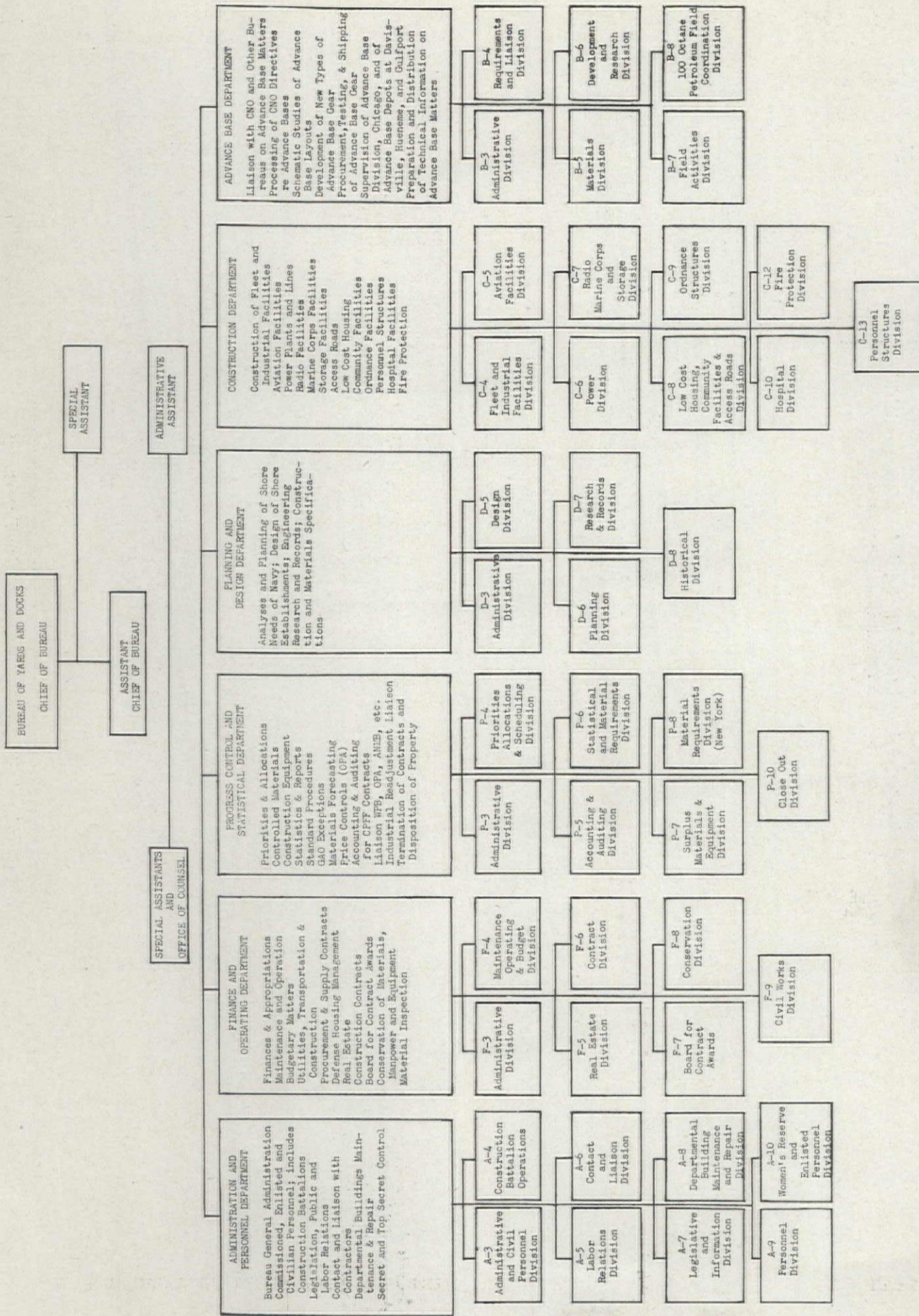
H. W. Tipton, Sanitary Section Head

Begley, H.  
 Dudley, R. A.  
 Flynn, J. J.  
 Genua, B. J., Group Leader.  
 Goodman, A. K.  
 Kendall, D. A., Group Leader.  
 Knoop, F., Group Leader.  
 Levy, A. P.  
 Mallonee, W. E.  
 Means, J. E.  
 Moran, A. C.  
 Morris, R. F.  
 Oliver, J. E.  
 Rogers, O. P.  
 Rosenfelt, M.  
 Sassani, M. J.  
 Snedeker, F. J.  
 Tipton, H. W., Sanitary Section Head.  
 Volonte, A. F.  
 Walsh, W. A.

DESIGN ENGINEERS SECTION

Amirikian, A., Welding, Bombproofing, and Floating Structures; Head of Section.

Anderson, B. G.  
 Ayres, J. R.  
 Conger, H. G.  
 Eckerle, W. P.  
 Epstein, H., Waterfront Structures; Head of Section.  
 Franks, F. L.



Organization Chart—Bureau of Yards and Docks

**PLANNING AND DESIGN DEPARTMENT**

Analyses and planning of shore needs of Navy; design of shore establishments; construction and materials specifications; engineering research and records.

**ADMINISTRATIVE DIVISION**

Reviews outgoing correspondence for proper form; supervises stenographic, clerical and messenger force; maintains correspondence files; routes incoming mail; acts as liaison between design division and office of chief clerk on personnel matters. Functions for whole department.

**DESIGN DIVISION**

Has cognizance of the preparation of engineering standards for the guidance of all concerned with the public works program; also prepares plans, specifications, and cost estimates for public works of the Navy.

**PLANNING DIVISION**

Collects data, and prepares studies, reports, and plans in connection with shore establishment, logistics, advance base layouts, terrain conditions and natural resources. Does long range planning of shore facilities as affected by demobilization and post-war plans.

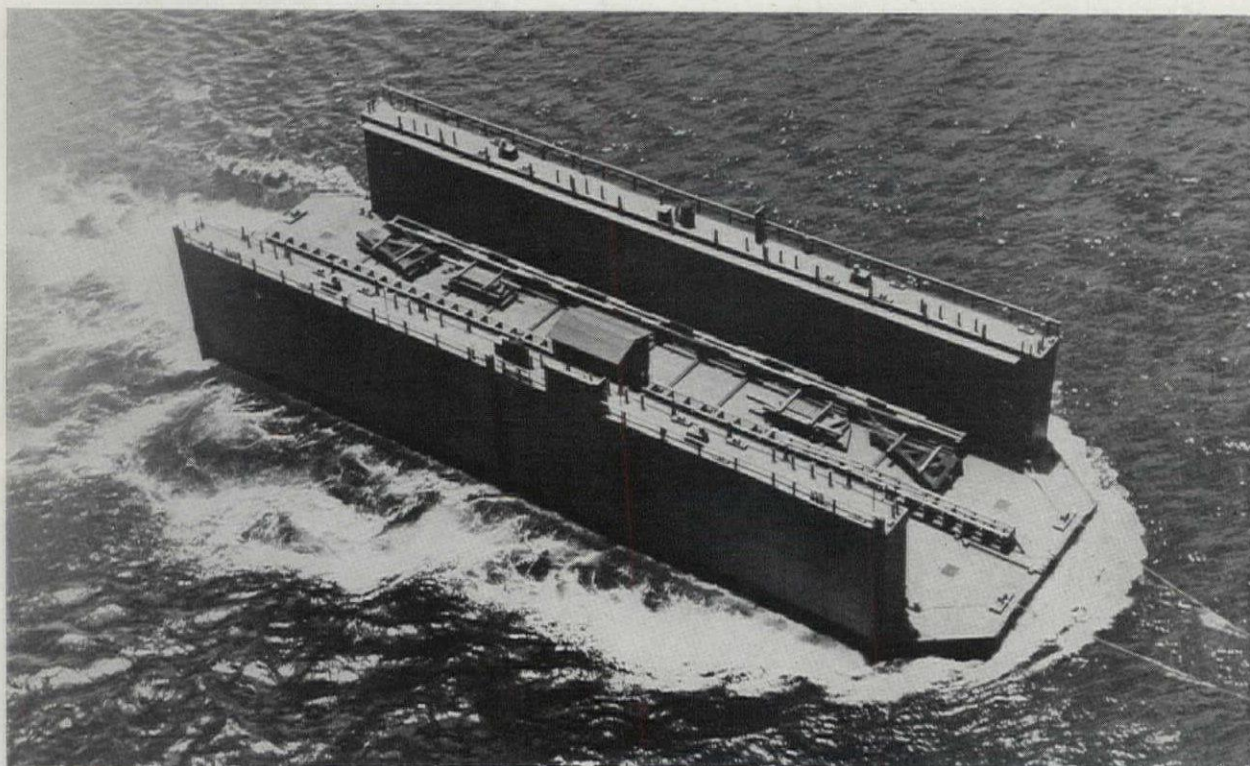
**RESEARCH AND RECORDS DIVISION**

Maintains contacts for the bureau with research activities of other Governmental agencies and private research laboratories; collects, analyzes, and disseminates data regarding new materials and methods of interest to the bureau; acts as custodian for technical and historical publications and records, including photographs, motion picture films and photographic equipment.

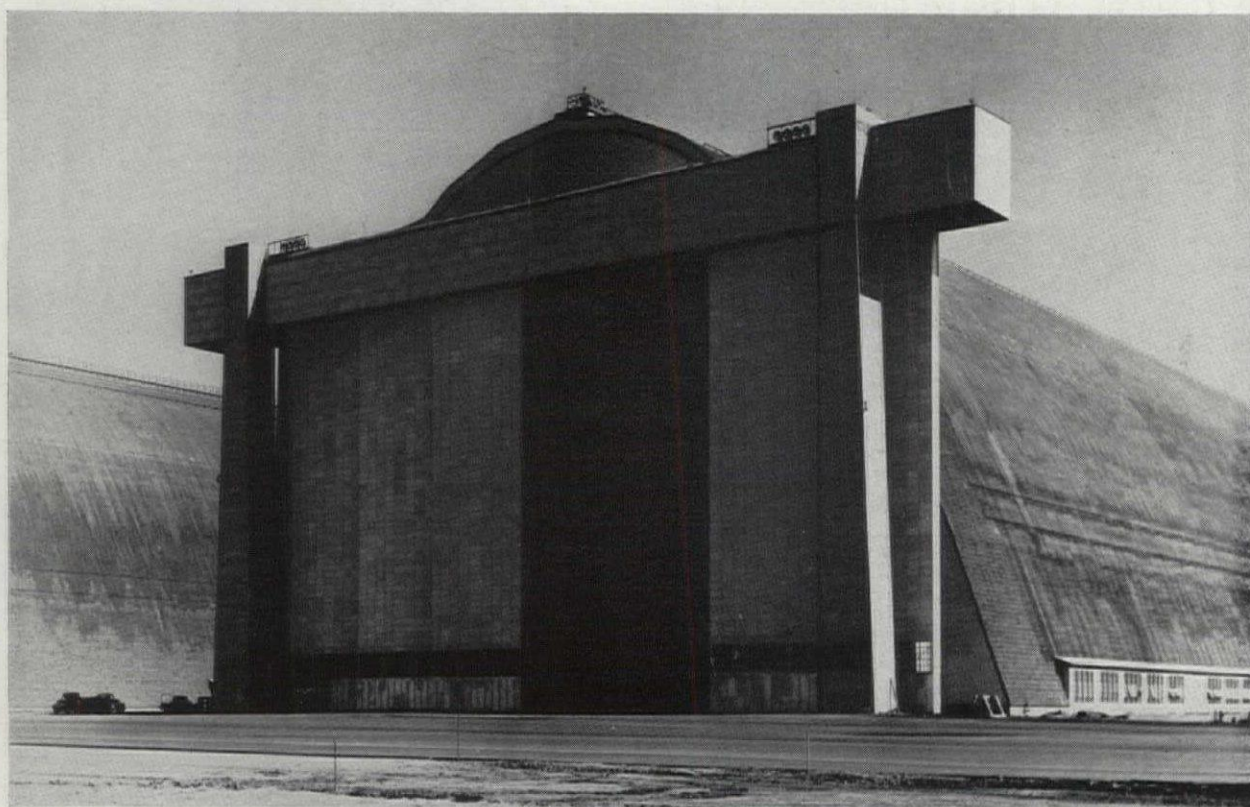
**HISTORICAL DIVISION**

Preparation of historical account of war activities of the Bureau and Civil Engineer Corps, including development of the continental and off-shore naval establishment and construction of advance bases.

*Designed by Bureau Yards and Docks*



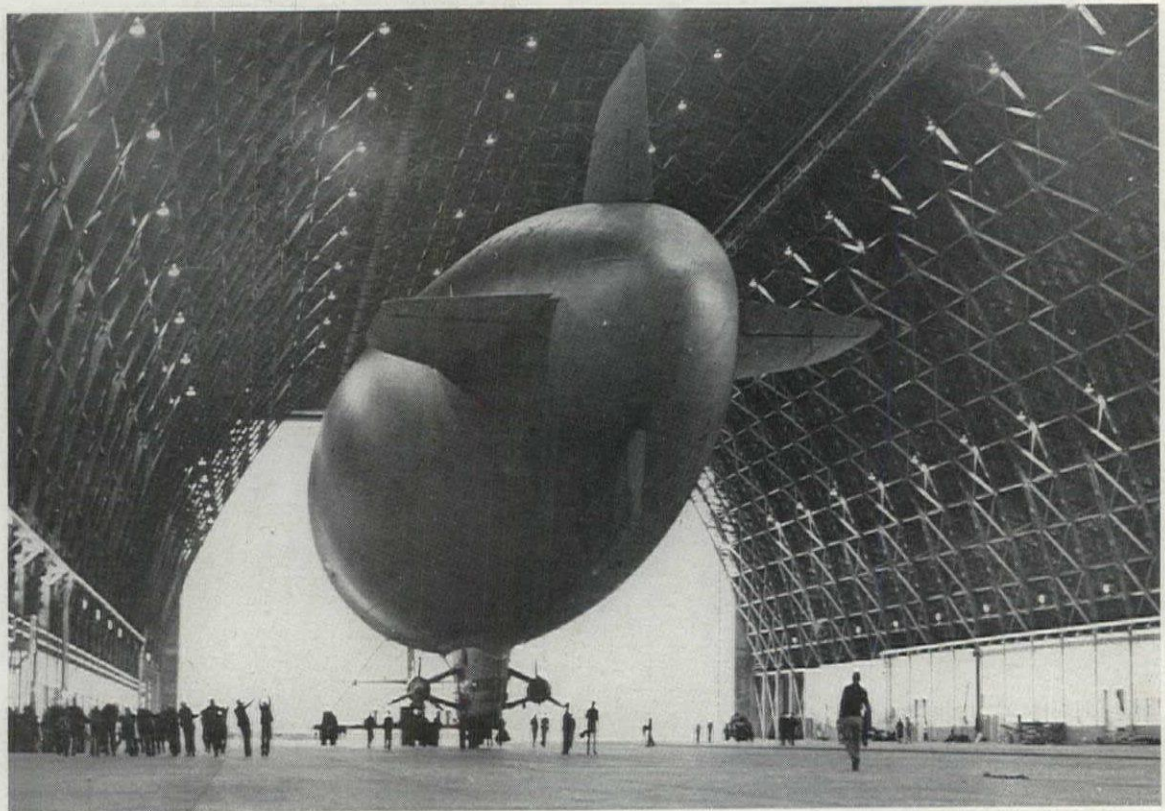
*Floating Dry Dock*



*Hangar Door*



*Naval Medical Centre, Bethesda, Md.  
Paul P. Cret, Bureau Yards and Docks, Architects*



*Inside of Dirigible Hangar  
Designed by Bureau Yards and Docks*



Herzenberg, G.  
 Johnston, J. A.  
 Koller, G. E.  
 Kraetski, R. M.  
 Lemmond, W. P.  
 Odley, E. G.  
 Palmer, L. A., Soil Mechanics; Head of Section.  
 Palmer, L. B.  
 Pear, H.  
 Popps, G. C.  
 Salgo, M.  
 Slade, E. R.  
 Smith, W. W., Floating Structures; Development;  
 Head of Section.  
 Stokes, R. C.  
 Wagstaff, J. P., Weight Lifting Equipment; Head  
 of Section.  
 Yeomans, C. M., Soil Mechanics Laboratory.

**SPECIFICATION SECTION**

R. J. Potbury, Section Head.  
 F. A. Bennett, Assistant Section Head.

*Special Assignments*

Ilsley, A.  
 Malarkey, J. E.

*Structural Group*

Wright, K. E., Group Head.  
 Feinberg, S. M.  
 Marsh, E. G.  
 Schubert, R.

*Electrical Group*

Anderson, F. B., Group Head.  
 Fixman, G.

*Heating and Ventilating Group*

Smallman, F. W., Group Head  
 Goad, R. W.

*Plumbing Group*

Barnard, P. H., Group Head  
 Fentiman, L. A.

*Power Plants Group*

Brooks, C. W., Group Head  
 Erskine, P. F.

*Architectural Groups*

Ebert, C. J., Burn, L. T., Group Heads

Frick, W. J.  
 Jacobssen, G. E.  
 Miller, R. A.  
 Ritter, L. B.  
 Schlosser, J. J.  
 Wood, J.

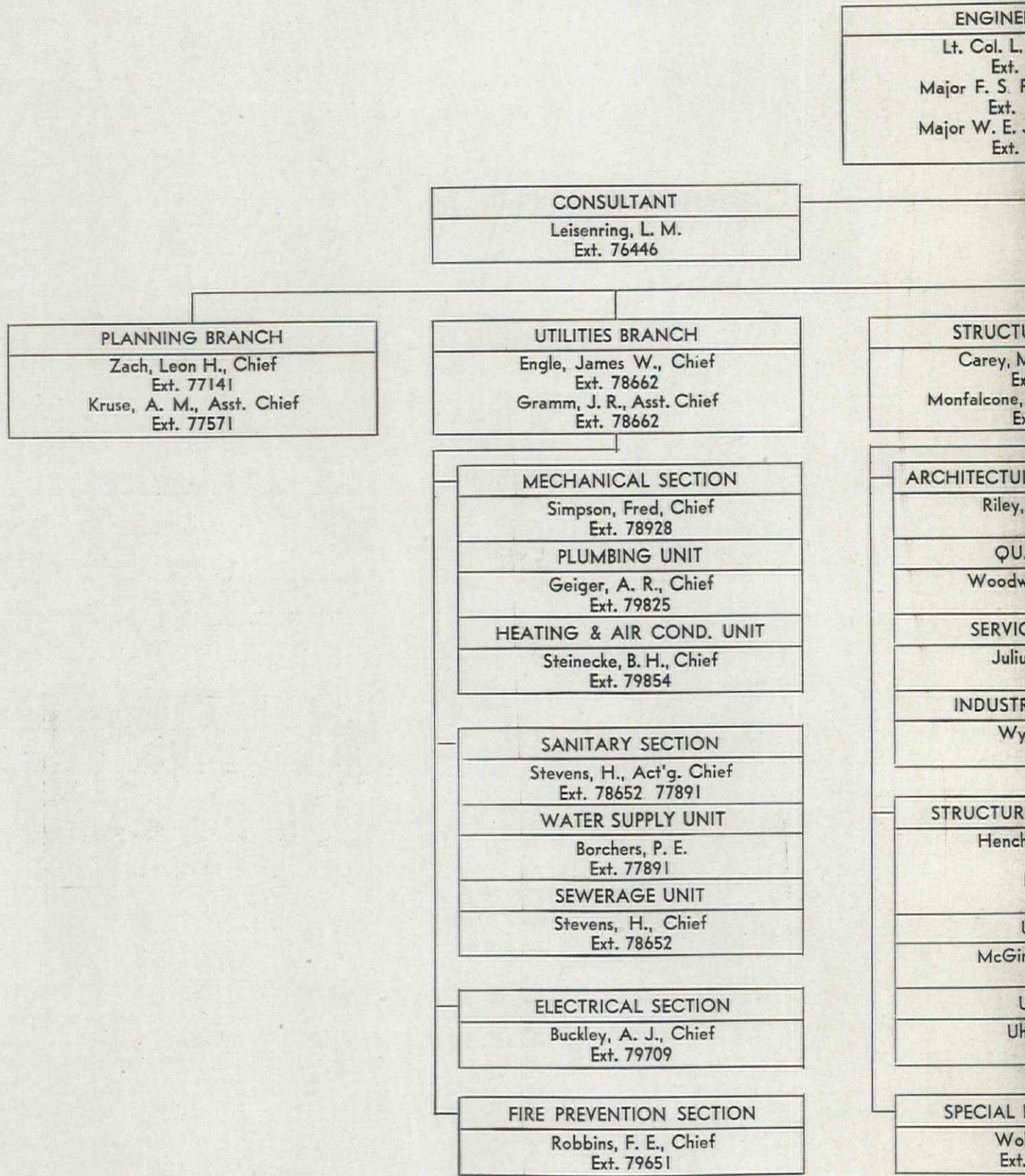
**COST ESTIMATING SECTION**

G. R. Callis, Section Head

Burleson, L. F., Cost Data Files.  
 Driggs, A. A., Mechanical Estimating.  
 Farrell, R. W., Construction Estimating.  
 Posey, J. F., Construction Estimating.  
 Spence, Construction Estimating.  
 Williams, H. S., Electrical Estimating.



*Foundry Building  
 Designed by Bureau of Yards & Docks*



DIVISION  
 Quhart, Chief  
 79153  
 n, Exec. Officer  
 78851  
 , Exec. Assistant  
 77919

CORRESPONDENCE CONTROL  
 Hall, V. G., Chief  
 Ext. 76003

BRANCH  
 F., Chief  
 1  
 Asst. Chief  
 9

SPECIFICATIONS & ESTIMATING BR.  
 Zackrisson, H. B., Chief  
 Ext. 78761  
 Kurtz, A. S., Asst. Chief  
 Ext. 77347

PAVING & RAILROADS BRANCH  
 McFadden, G. F., Chief  
 Ext. 77951

DESIGN SECTION  
 M., Chief  
 880

TECHNICAL CONTROL SECTION  
 Dean, C. S., Chief  
 Ext. 77655

ROADS SECTION  
 Knudson, H. C., Chief  
 Ext. 79262

S UNIT  
 R., Chief  
 890

MATERIALS CONTROL UNIT  
 Bailey, E. B., Chief  
 Ext. 79642

AIRFIELDS SECTION  
 Pringle, T. B., Chief  
 Ext. 78443

GS. UNIT  
 Chief  
 880

TECHNICAL DATA UNIT  
 Mason, C. R., Chief  
 Ext. 78692

RAIL, PORT & STORAGE SECTION  
 Camp, C. L., Chief  
 Ext. 76005

LDGS. UNIT  
 Chief  
 880

SPECIFICATION SECTION  
 Barth, Max, Chief  
 Ext. 77918

TURFING SECTION  
 Monteith, J., Jr., Chief  
 Ext. 79262

IGN SECTION  
 H., Chief  
 860  
 V. S.  
 446

CONSTRUCTION UNIT  
 Brightly, H. S., Chief  
 Ext. 79641

O. 1  
 J., Chief  
 860

MATERIEL UNIT  
 Grimes, F. M., Chief  
 Ext. 76950

O. 2  
 Chief  
 860

ESTIMATING SECTION  
 Rachelle, T. M., Chief  
 Ext. 76426

CTS SECTION  
 Chief  
 76159

# U. S. COAST GUARD

(Part of Navy Department)

Vice Admiral R. R. Waesche, Commandant, U. S. Coast Guard.

Captain R. R. Tinkham, Chief, Civil Engineering Division, Office of Engineering.

F. H. Mahlman, Chief, Architectural Section.

Commander R. L. Hankinson, Assistant Chief, Civil Engineering Division.

## ARCHITECTS

R. T. Alker  
J. R. Bailey  
F. S. Everts  
E. M. Kennickell  
A. M. MacIntire

F. H. Mahlman  
C. M. Merwin  
C. J. Penk  
E. M. Pitt  
W. C. Silber

## ENGINEERS

J. A. Ciccolella  
R. A. Coatesworth  
C. N. Coseboom  
W. B. Cummins  
E. A. Dubin  
P. W. Gustafson  
R. N. Holmgren  
O. B. Ives  
G. L. Kelly  
L. W. Luttrell  
P. A. Macaroff  
S. J. Matthews  
E. L. McGandy

C. E. Minear  
A. A. Nalevenko  
L. G. Parker  
P. H. Petersen  
F. I. Phippeny  
E. A. Reno  
D. K. Robinson  
A. G. Schuster  
R. L. Simmers  
W. A. Terry  
D. H. Wade  
E. P. Wagner  
F. W. Wortman

**T**HE Civil Engineering Division, directly or through district offices, designs, constructs, repairs, alters, and maintains Coast Guard shore establishments, including buildings of all types, utility installations (sewage, water, gas, steam, electric), fixed aids to navigation (lighthouses, etc.), airports, docks, and roads. For the past three years the Civil Engineering Division has also performed architectural and engineering services for the War Shipping Administration.

The following are representative among the more important projects completed since the beginning of the war:

Coast Guard Academy, New London, Conn.—extensions.

Coast Guard Yard, Curtis Bay, Md.—extensions.

Coast Guard Training Station, Groton, Conn.—extensions.

Coast Guard Training Station, Manhattan Beach, N. Y.

Maritime Training Station, Sheepshead Bay, N. Y.

Coast Guard Training Station, Alameda, Calif.

Maritime Training Station, Neptune Beach, Calif.

Maritime Cadet Basic School, Pass Christian, Miss.

Coast Guard Communication Stations (seven) at Boston, Mass., South Brooklyn, N. Y., Norfolk, Va., Cleveland, Ohio, San Francisco, Calif., Seattle, Washington, Ketchikan, Alaska.

Coast Guard Base, Portsmouth, Va.

Coast Guard Base, Constitution Wharf, Boston, Mass.

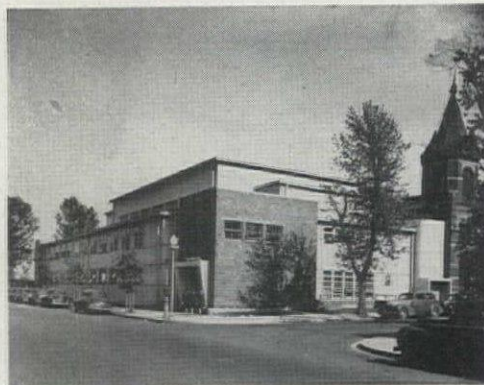
Spar Barracks, Washington, D. C.

Coast Guard Supply Base, Alameda, Calif.

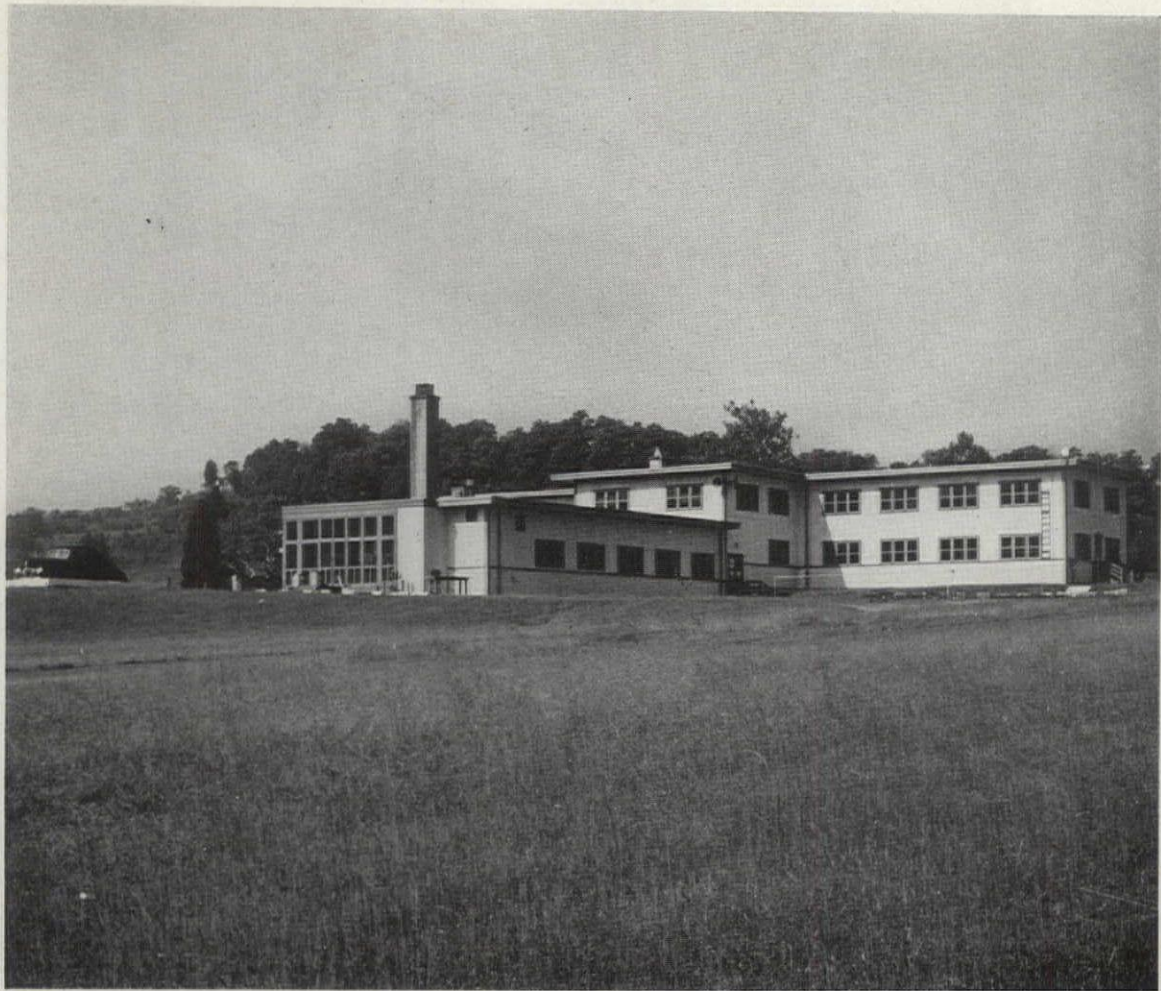
Coast Guard Air Stations, extensions, at Salem, Mass., Brooklyn, N. Y., Elizabeth City, N. C., St. Petersburg, Fla., Biloxi, Miss., San Diego, Calif., San Francisco, Calif., Port Angeles, Washington.

Under the direction of the Civil Engineering Division, there is a Civil Engineering Office in each of the following Coast Guard Districts: Boston, New York, Philadelphia, Norfolk, Charleston, Miami, New Orleans, St. Louis, Cleveland, San Juan, Long Beach, San Francisco, Seattle, Honolulu, and Ketchikan, and at the Coast Guard Yard, Curtis Bay, Md. Address—1300 E Street, N. W.

All Civil Engineering telephones are under the Navy exchange, RE 7400.

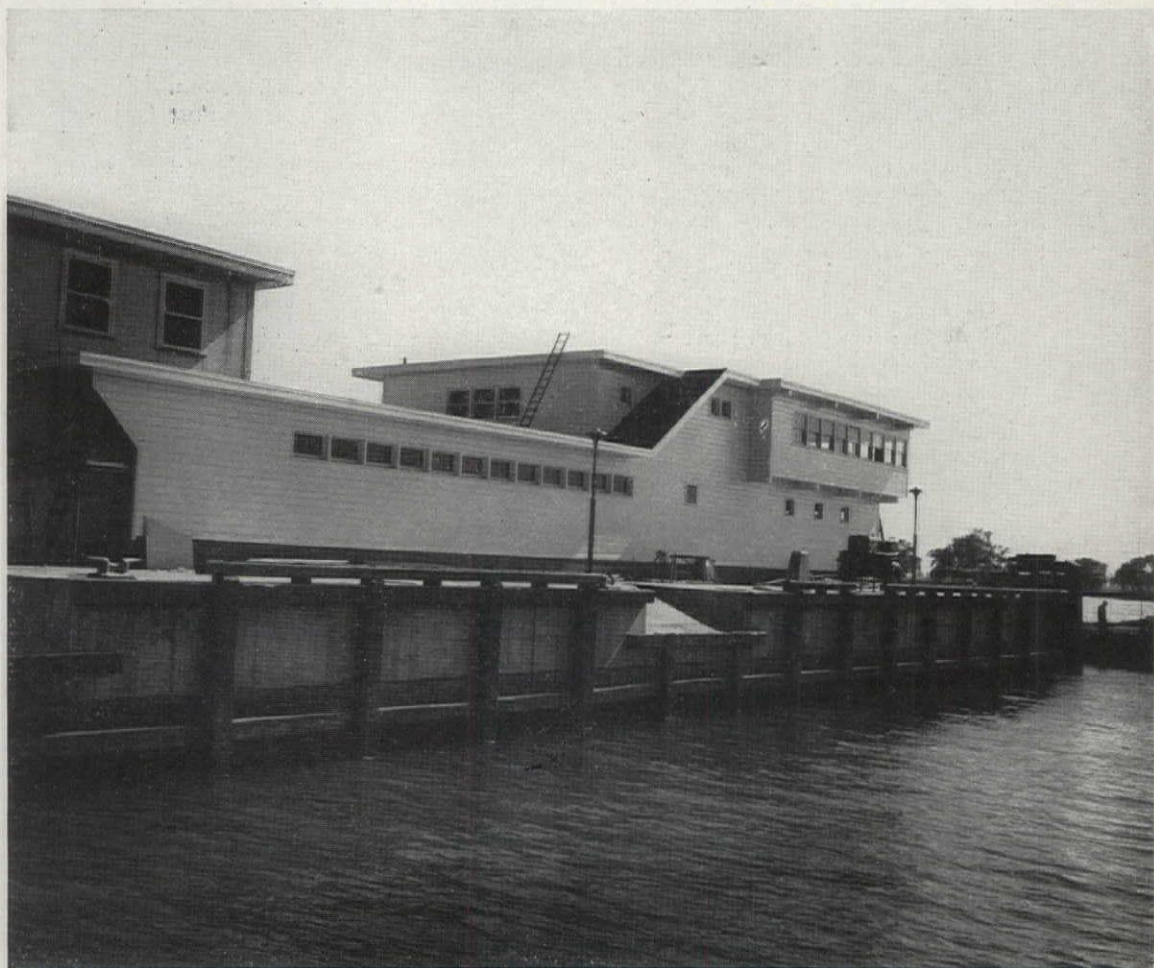


*Spar Dormitories  
Coast Guard, in con-  
junction with Public  
Blds. Adm., Architects*



*Washington Radio  
Station Barracks*

*Designed by U. S. Coast Guard, Architects*



*Mess Hall,  
Captain of the Port,  
Washington, D. C.*

# PUBLIC BUILDINGS ADMINISTRATION

## FEDERAL WORKS AGENCY

W. E. REYNOLDS  
*Commissioner of Public Buildings*

GEORGE HOWE  
*Deputy Commissioner for Design and Construction*

### *Office of the Supervising Architect*

Gilbert Stanley Underwood  
Supervising Architect

Allan Stewart Thorn  
Asst. Supervising Architect

M. E. Ekstrand  
Actg. Adm. Asst. to the Supv. Archt.

C. D. Persina  
Chief of Design

R. S. Hart  
Chief of Architecture

G. A. Daidy  
Asst. Chief of Architecture

T. C. Coleman  
Chief of Architectural Engineering

C. W. Chamberlain  
Asst. Chief of Architectural Engineering

C. W. Barber  
Chief Structural Engineer

J. W. Dunham  
Asst. Chief Structural Engineer

J. A. Cliff  
Asst. Chief Structural Engineer

Robert Mayo, Jr.  
Chief Mechanical Engineer

A. R. Horn  
Asst. Chief Mechanical Engineer

### *Office of the Supervising Engineer*

Murray M. Davis  
Supervising Engineer

George R. Roberts  
Chief Office Engineer

Earl H. Lund  
Asst. Chief Office Engineer

Herman J. Bounds  
Chief Field Engineer

Otis R. Poss  
Chief Engineer of Repairs

R. E. Stromberg  
Asst. Chief Engineer of Repairs

### *District Engineers*

1. Mr. Geo. R. Berryman  
1201 Custom House  
Boston, 9, Mass.  
Asst.—Wm. A. Miller
2. Mr. Jno. J. McNeely  
731 Custom House  
New York 4, N. Y.  
Asst.—Adolph T. Prigozy
3. Mr. H. S. McAllister  
3102 City Post Office  
Washington 25, D. C.  
Asst.—Calvin H. Cool
4. Mr. Albert E. Sanderson  
214-M Post Office, Federal Annex  
Atlanta 3, Georgia  
Asst.—Lloyd Gensel
5. Mr. A. A. Packard  
377 U. S. Court House  
Chicago 4, Illinois  
Asst.—Fred H. Williams
6. Mr. K. L. Hullsick  
514 New Post Office  
Kansas City 8, Missouri  
Asst.—Ralph L. Warren
7. Mr. I. D. Porter  
550 New Post Office  
Dallas 1, Texas  
Asst.—C. R. Haden
8. Mr. T. H. Farrington  
838 U. S. Appraisers Bldg.  
San Francisco 11, California  
Asst.—Louis W. Friberg

### *Emergency Operations Unit*

P. L. Hein  
Engineer Advisor in Charge

S. G. Wetzel  
Administrative Assistant

J. P. Davey—Project Management

W. J. Frank—Architectural

A. D. Werner—Mechanical

A. W. Santelman—Structural

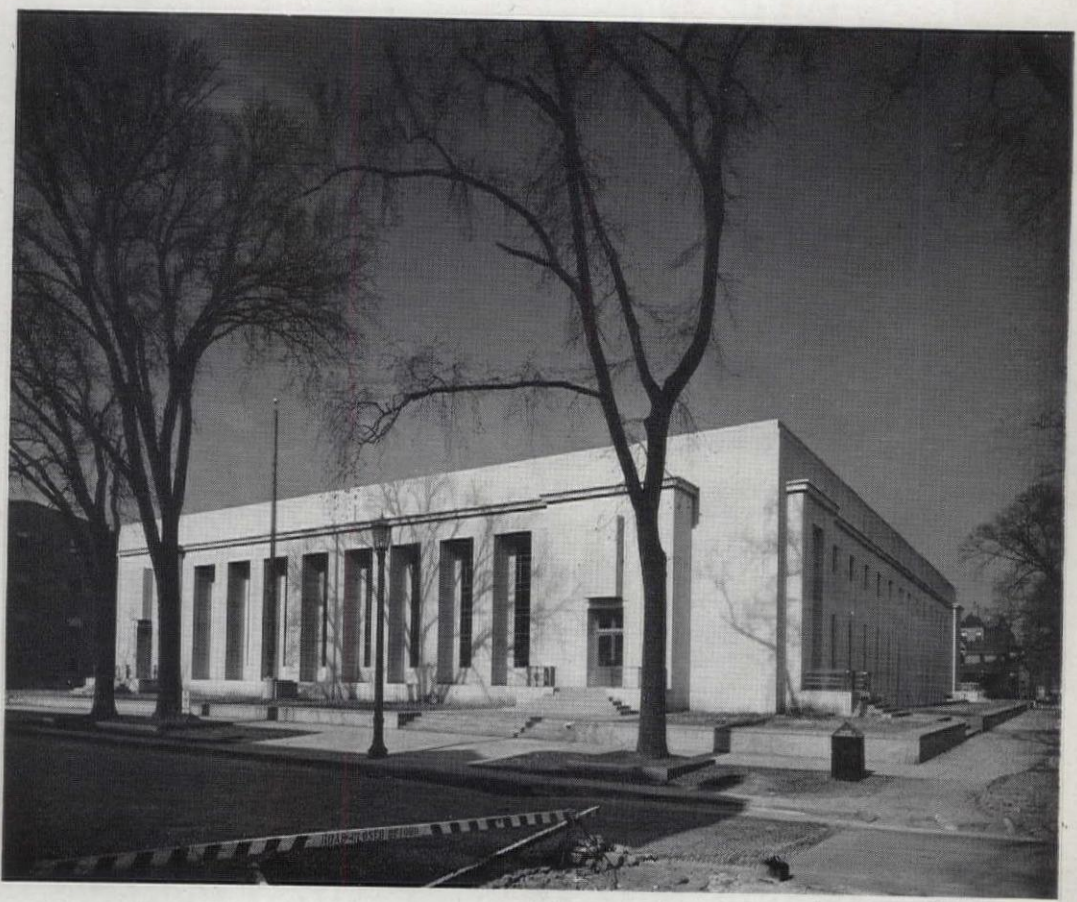
D. E. Dixon—Specifications

N. R. Zummo—Priorities

O. H. Loverbeck—Estimating



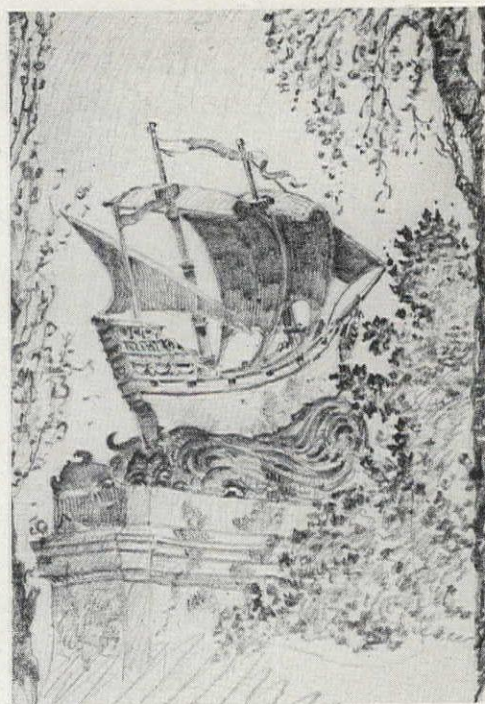
*Above—New War Department  
Building*



*Right—Evanston, Ill., P. O.*

*Public Bldgs. Adm. Architects*

*Sketches in Pencil by George Hales, of the District Engineer's Office of Public Building Administration, San Francisco, Cal.*



*Above—Robert Louis Stevenson Memorial  
San Francisco, Cal.*



*Left—Chinatown  
San Francisco, Cal.*

*Call. G. Green  
April 11-40  
S.F.*

*LIBRARY OF THE UNIVERSITY OF CALIFORNIA*



## THE MAGIC HEATING AND COOLING PLANT OF THE HUMAN BODY

The human body has an amazing heating and cooling system which always keeps the body at a uniform temperature regardless of climatic conditions. Please write for Bulletin 237 telling all about it and the new, revolutionary RECO Radi-Aire Circulator.

The RECO is designed to work in harmony with nature and to remove the hot, moist blanket simultaneously from all over the body. And it does so without any draft to cause sore throats, colds, etc. Because the RECO Radi-Aire Circulator operates quietly without annoying drafts, it is admirably suited for hospitals, public buildings, churches, schools, etc. Write for the complete story about this remarkable, new air circulator.



Above sketch shows air movement produced by the RECO.

**REYNOLDS**  
ELECTRIC COMPANY

2654 W. Congress St.

Chicago 12, Ill.

## ORIGINAL SOLID CORRUGATED WIRE GLASS

WINDOWS and SKYLIGHTS

*Manufactured by*

**PENNSYLVANIA  
WIRE GLASS COMPANY**

1612 Market St.

Philadelphia 3, Pa.

## Our Window Shade Cloths

We are LOOKING AHEAD to the time when our plants are released from war production and we can again manufacture window shade cloths, putting to good use those new and advanced processes that will be applicable to shade cloths.

SUN-FAST HOLLANDS and STAND-FAST, PYROXYLIN Shade Cloths,

manufactured at Bancroft's, have been specified and extensively used in Government buildings throughout the country.

ALBERT and LONDON HOLLANDS manufactured by Albert D. Smith & Co. at their Claysmith plant, have given utmost service in housing projects throughout the nation.

**Joseph Bancroft & Sons Co.**

WILMINGTON, DELAWARE

**Albert D. Smith & Co., Selling Agents,**

81 Worth Street

New York 13, N. Y.

# SEAPORCEL

**a tough ceramic coating fused to metal**

The buildings of tomorrow's peaceful world will be protected and beautified with Seaporcel Porcelain Metals.\* Developed to withstand grueling punishment at sea, Seaporcel's fast color and smooth finish will retain their beauty through years of adverse weather. Seaporcel ceramic coating, available in almost any shape, shade and color, affords the architect unlimited latitude in creating building exteriors and interiors.

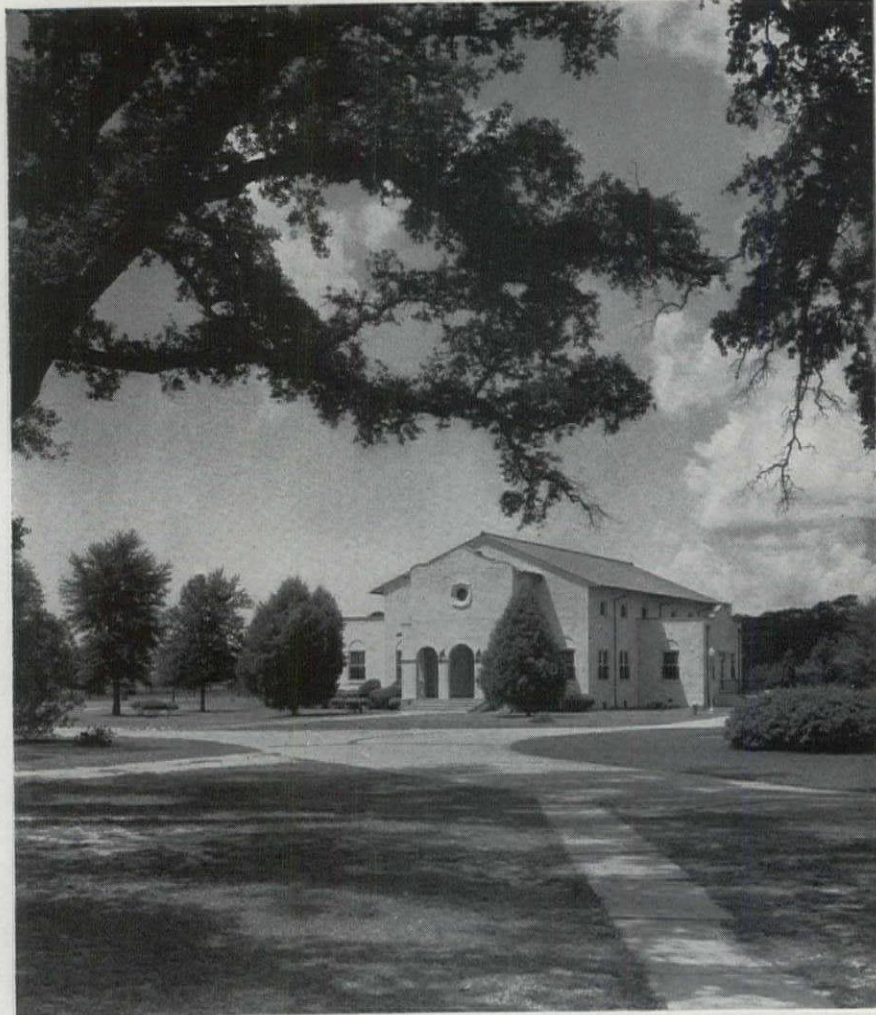
See Sweets Architectural File: 1943, Section 13/9; 1944, Section 6/11; 1945, Section 6d/3—or write for complete information. Address department A.

\*Reg. U. S. Pat. Off.

**SEAPORCEL PORCELAIN METALS, INC.**

28-00 Borden Avenue, Long Island City 1, N. Y.

Formerly Porcelain Metals, Inc.



*Veterans' Administration Hospital at Gulfport, Mississippi*

## VETERANS ADMINISTRATION

Brigadier General Frank T. Hines, Administrator.  
Colonel George E. Ijams, Assistant Administrator in  
charge of Medical and Hospital, National  
Homes, Construction and Supply Services.  
Colonel L. H. Tripp, Director of Construction.

### *Construction Service*

THE work of the Veterans Administration includes the construction of hospitals, homes for domiciliary members and buildings incidental thereto, such as Utility Buildings, consisting of boiler house, supply warehouse, garage, laundry, shops buildings; Recreation Building; Theatre Building; and quarters for personnel, consisting of residence for Medical Officers, Resident Engineer, Nurses and Attendants. There are other miscellaneous types of buildings erected when required, depending upon the type of Facility being developed.

The Construction Service of the Veterans Administration, except where property has been leased or

acquired by transfer from other Government departments, has erected all Veterans Administration Facilities, consisting of such Facilities as Northport, Long Island, New York; Montgomery, Alabama; Bay Pines, Florida; San Francisco, California, and many other locations throughout the United States.

The office of the Director, Project Supervision and the M&O Division are located in the Veterans Administration Building on Vermont Avenue at "I" Street, N. W., Washington, D. C. The Technical Division has office space at 1436 "U" Street, N. W., Washington, D. C.

The telephone number of the Administration is DIstrict 6110.

## Construction

### Office of the Director Central Office

Herbert Baruch, Assistant to the Director  
D. M. Turner, Technical Assistant to the Director  
Don R. Cost, Administrative Assistant  
Ernest C. Hunter, Field Supervisor  
James E. McMurrer, Field Supervisor  
G. Emerson Moore, Field Supervisor  
M. J. Travland, Field Supervisor

### Field

Colonel Wm. H. Radcliffe, Supervising Superintendent of Construction, Veterans Administration, Palo Alto, California  
Capt. P. M. Feltham, Supervising Superintendent of Construction, Federal Building, Atlanta, Ga.  
Alva Engstrom, Assistant to the Supervising Superintendent of Construction, Veterans Administration, Palo Alto, California

### Technical Division

W. R. Talbott, Chief

### Design Sub-Division

Roy E. Guard, Chief

### Architectural Section

I. L. Clark, Chief  
L. E. Twery, Assistant Chief  
S. Arnvig, Architect  
J. W. Ayars, Architect  
A. O. Buselmeier, Architect  
H. B. Fleischmann, Architect  
H. E. France, Architect  
R. F. Gustafson, Architect  
F. W. Guy, Architect  
E. C. Harper, Architect  
H. P. Heald, Architect  
W. A. Hilgemann, Architect  
E. T. Jenkinson, Architect  
R. H. Julian, Architect  
A. J. La Vaute, Architect  
H. D. Lockling, Architect  
J. G. B. Mitchell, Architect  
S. W. Phelps, Architect  
C. O. Pribek, Architect  
R. B. Rench, Architect  
A. W. Ross, Architect  
W. R. Seltzer, Architect  
K. J. Schmidt, Architect  
L. Stanford, Architect  
A. M. Tabbutt, Architect  
W. Woodville, Architect  
A. L. Zawatsky, Architect

### Landscape Section

C. H. Stratton, Chief  
C. Sorensen, Assistant Chief  
O. D. Elson, Engineer  
H. V. Meakin, Architect  
A. B. Metcalf, Architect  
R. F. North, Engineer  
E. C. Rowland, Architect

### Planning Unit

P. H. Veit, Chief

W. O. Bender, Architect  
T. B. Owings, Architect  
W. H. Smith, Architect

### Shop Drawing Unit

F. A. Elliott, Chief  
H. W. Landman, Architect  
W. F. Murphy, Architect  
A. A. Tappe, Architect

### Engineering Sub-Division

Samuel L. Leithiser, Chief

### Electrical Section

John T. Moore, Jr., Chief  
Harry L. Doyle, Assistant Chief  
Marion T. Boyer, Electrical Engineer  
William O. Courson, Electrical Engineer  
Thomas H. Hallinan, Electrical Engineer  
William Hallman, Electrical Engineer  
Samuel A. Hoover, Jr., Electrical Engineer  
John F. Kirby, Electrical Engineer  
Oden L. Mulcahy, Electrical Engineer  
Eugene A. White, Electrical Engineer  
Maurice B. White, Engineering Draftsman

### Heating Section

Sidney J. Fentiman, Chief  
Edwin H. Schubert, Assistant Chief  
Howard D. Chapman, Mechanical Engineer  
Edgar Copeland, Mechanical Engineer  
Elmer A. Lenz, Mechanical Engineer  
Oscar W. Rackle, Mechanical Engineer  
Charles S. Reynolds, Mechanical Engineer  
Edwin H. Richards, Mechanical Engineer  
Alexander Schwollman, Mechanical Engineer  
Julius Cerulla, Engineering Draftsman

### Equipment Section

Rollan L. Trone (Architect), Chief  
William T. Capps, Jr.  
Carroll J. Hennick, Architect  
Lois B. Robbins, Engineering Aid

### Plumbing Section

Norman C. Hepburn, Chief  
Benjamin S. Elliott, Assistant Chief  
Charles F. Weiksner, Assistant on Refrigeration  
Irl Bauserman, Mechanical Engineers  
Arthur L. Eagle, Mechanical Engineers  
Lucius B. Ensign, Mechanical Engineers  
Willis C. Goslin, Mechanical Engineers  
Alexander Halperson, Mechanical Engineers,  
Squad Leader  
Elbert F. Hawley, Mechanical Engineer  
Leon Edward Proctor, Jr., Squad Leader, Mechanical Engineers  
Richard Y. Smith, Jr., Mechanical Engineers,  
Squad Leader  
Joseph J. Volpe, Mechanical Engineer  
Roshan W. Dyar, Engineering Draftsman  
Charles Ruga, Engineering Draftsman  
Herbert E. Velte, Engineering Draftsman

### Sanitary Section

Daniel N. Officer, Chief  
David Neill Hepburn, Assistant Chief

Albert E. Butler, Mechanical Engineer  
Henry B. Candee, Mechanical Engineer  
Alvin C. Moran, Mechanical Engineer  
Harla D. Phillips, Mechanical Engineer  
Allan DeChany, Engineering Draftsman

*Steam Generation and Distribution Mechanical Section*

Lester A. Williams, Chief  
Leroy C. Nelson, Assistant Chief  
Perry B. Miller, Mechanical Engineer  
Nathan R. Warthen, Mechanical Engineer  
Walter John Winquist, Mechanical Engineer  
William E. Winterhak, Engineering Draftsman

*Structural Sub-Division*

J. M. Kerr, Chief  
H. B. Chandler, Assistant Chief  
R. D. Adams, Structural Engineer  
George W. Anderson, Structural Engineer  
Frank B. Chambers, Structural Engineer  
P. V. Douglas, Structural Engineer  
Justin M. Elliott, Structural Engineer  
Morris R. Grane, Structural Engineer  
Harry W. Heater, Structural Engineer  
Robert S. Means, Structural Engineer  
Fred Rauchenstein, Structural Engineer  
G. N. Wheat, Structural Engineer

*Specification Sub-Division*

Albert G. Bear, Chief  
Harry E. Ratcliffe, Assistant Chief  
Leon E. A. Chagnon, Specification Writer  
John B. Crawford, Specification Writer  
Wm. C. Ferguson, Specification Writer  
Charles H. Kain, Specification Writer  
Roy S. Mason, Specification Writer  
Horace B. Peterson, Specification Writer  
Clarence D. Smalling, Specification Writer  
Frank B. Stevens, Jr., Specification Writer  
Joseph H. Swafford, Specification Writer  
Howard A. Turner, Specification Writer  
Francis A. Updegraff, Specification Writer  
M. Emanuel Weiner, Specification Writer  
John W. Williams, Specification Writer  
B. D. Andy Anderson, Specification Writer  
Irving M. Cahn, Specification Writer  
Raymond H. Carliss, Specification Writer  
Wm. R. Von Blon, Chief, Laboratory and Materials Inspection  
Mabel F. Bever, Sr. Scientific Aid  
Ernest G. Blank, Sr. Inspector of Materials  
Harold A. Gadsden, Inspector of Materials

*Alteration Sub-Division*

George E. Chapplear, Chief  
Edward M. Kilerlane, Assistant Chief

*Central Office*

Emanuel F. Alexander, Architect  
Dorothy S. Allen, Architect  
Laurence E. Allison, Project Manager  
Le Roy C. Becker, Architect  
Carl L. Campbell, Architect  
Vincent Caruso, Architect

Leo J. Chevalier, Architect  
George J. Clemmer, Architect  
Grover H. Dodd, Estimator—Superintendent  
Raymond R. Douglas, Architect  
Zeb T. Hamilton, Estimator  
Clarence H. Irwin, Architect  
H. Leland Magill, Estimator—Superintendent  
Edward F. Stadel, Architect  
Lewis D. Wilkinson, Architect  
Wm. F. Wilkinson, Architect

*Field*

Thomas G. Dodd, Sr. Supt. of Construction, Veterans Administration, Wadsworth, Kansas  
Clarence H. Fleming, Supt. of Construction, Veterans Administration, Downey, Illinois  
John G. Robbins, Architect, Veterans Administration, Wadsworth, Kansas  
Glenn R. Stevens, Supt. of Construction, Veterans Administration, Downey, Illinois  
Joseph T. Metz, Engineering Aide

*Project Supervision*

Joseph A. Fahy, Chief, Project Supervision

*Central Office*

Fred Craven, Sr. Project Manager  
G. L. Peebles, Sr. Project Manager  
R. G. Bergstrom, Project Manager  
J. L. Piland, Project Manager  
C. B. Rafter, Project Manager

*Senior Superintendents of Construction*

| <i>Field</i>                          | <i>Station</i> |
|---------------------------------------|----------------|
| Edward P. Brady—Northampton, Mass.    |                |
| Albert T. Chipman—Lyons, N. J.        |                |
| Joseph F. Cita—Knoxville, Iowa        |                |
| Louis C. Darnet—Coatesville, Pa.      |                |
| Charles J. Davis—Waco, Texas          |                |
| Carl R. Deckwith—Chillicothe, Ohio    |                |
| Clifford D. Franks—Lebanon, Pa.       |                |
| Walter M. Gordon—Los Angeles, Calif.  |                |
| Joseph J. Halter—Coatesville, Pa.     |                |
| Wm. B. Hamilton—Canandaigua, N. Y.    |                |
| George H. Henderson—Ft. Custer, Mich. |                |
| A. L. Jacquet—Tuscaloosa, Ala.        |                |
| Bert Ray Jones—Downey, Illinois       |                |
| Harold L. Keys—Ft. Lyon, Colorado     |                |
| L. H. Neudecker—Tuskegee, Ala.        |                |
| Willard N. Parker—Sheridan, Wyo.      |                |
| Edward R. Williams—Roanoke, Va.       |                |

*Superintendents of Construction*

Harold L. Burger—Canandaigua, N. Y.  
Lloyd S. Deighton—Waco, Texas  
Sol. B. Fishel—Waco, Texas  
Lloyd W. Hamby—Chillicothe, Ohio  
Harold J. Helwick—North Little Rock, Ark.  
Ernest A. Huebner—Waco, Texas  
Lester H. Hundley—Lexington, Kentucky  
John R. Jones—Lyons, N. J.  
Robert M. Koupal—Augusta, Ga.  
Darrell F. L. Kull—Fort Custer, Mich.

Chiswell D. Lee—Roanoke, Va.  
 Henry C. Marksby—Knoxville, Iowa  
 James A. Marmouget—Tuskegee, Ala.  
 Geo. Wm. O'Brien—Canandaigua, N. Y.  
 R. J. Oliver, II—Perry Point, Md.  
 Myron J. Powell—North Little Rock, Ark.  
 John E. Pruitt—Roanoke, Va.  
 Thomas W. Quirk—Dearborn, Mich.  
 Stuart M. Rathbone—Downey, Illinois  
 John Lester Reynolds—Fort Custer, Mich.  
 C. W. Scoville—Los Angeles, Calif.  
 Willard B. Smith—Coatesville, Pa.  
 H. R. C. Sturtevant—Perry Point, Md.  
 Randolph H. Thompson, Jr.—Roanoke, Va.  
 Frank J. Wilfong—Coatesville, Pa.  
 John A. Campbell—Lyons, N. J.  
 Wm. W. McGee—Chillicothe, Ohio  
 Hugh H. Crawford—Los Angeles, Calif.  
 Dean D. Hamilton—Tuscaloosa, Ala.  
 Joseph T. Haughey—Lebanon, Pa.  
 Robert L. Stephens—Fort Lyon, Colo.  
 Vincent Hellweg, Draftsman—Perry Point, Md.

*Maintenance and Operation Division*

Herbert W. Gardener, Chief

*Central Office*

*Buildings and Grounds Section*

Paul P. Fitzpatrick, Chief  
 M. P. Davis, Engineer  
 A. R. Hamilton, Engineer  
 J. F. Morrisey, Engineer  
 R. V. Root, Engineer

*Mechanical and Utilities Section*

C. S. McCarthy, Chief  
 F. G. Cockrell, Engineer  
 J. B. Dexter, Engineer  
 J. J. Gallagher, Engineer  
 I. J. Henderson, Engineer  
 E. W. Hunter, Engineer  
 A. S. Ridgway, Engineer

*Priorities Unit*

W. V. Wilson, Chief  
 J. A. Hewitt, Engineer  
 E. F. Hogle, Engineer

*Field*

*Utility Officers, Veterans Administration*

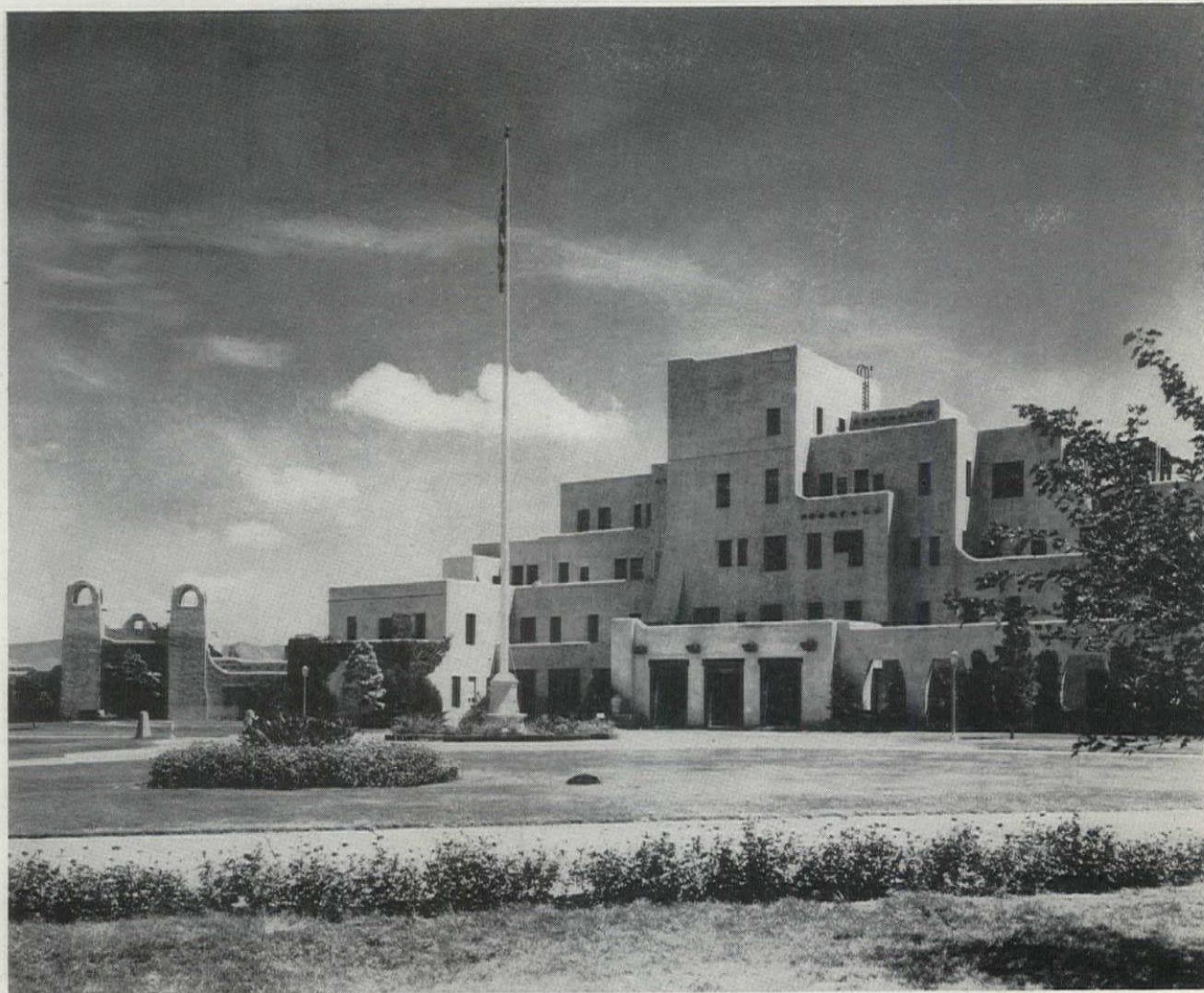
Charles Leithiser—Albuquerque, N. Mex.  
 Arthur T. Elliott—Alexandria, La.  
 Joseph Gale—Amarillo, Texas  
 Forrest G. Moor—American Lake, Wash.  
 Guy Dority—Atlanta, Georgia  
 F. S. Gary—Augusta, Georgia  
 Emil Carretto—Batavia, New York  
 Louis H. Hattman—Bath, New York  
 Chester W. Henry—Bay Pines, Florida  
 George Carlson—Bedford, Mass.  
 Manuel J. DeRocha—Biloxi, Miss.  
 E. L. King—Boise, Idaho  
 Fred Porschet—Brecksville, Ohio  
 Henry I. Levitan—Bronx, New York  
 Louis J. Sebra—Canandaigua, N. Y.  
 Arch P. Stewart—Castle Point, N. Y.

George A. Welch—Cheyenne, Wyoming  
 Floyd C. McCarty—Chillicothe, Ohio  
 William A. Morrison—Coatesville, Pa.  
 Benjamin A. Laning—Columbia, S. C.  
 Vincent Sibila—Dallas, Texas  
 John W. Briggs—Danville, Illinois  
 Moses Friedman—Dayton, Ohio  
 Silas McCulloch—Dearborn, Michigan  
 Richard W. Fisher—Des Moines, Iowa  
 Walter G. Reardon—Downey, Illinois  
 Glen B. Parker—Dwight, Illinois  
 W. R. Rosche—Excelsior Springs, Mo.  
 Harry E. Maher—Fargo, N. Dakota  
 George Stinedurf—Fayetteville, Ark.  
 Albert E. Lofgren—Fort Bayard, N. M.  
 Larry C. Lawrence—Fayetteville, N. C.  
 Herman Ehmke—Fort Custer, Mich.  
 John Culbertson—Fort Harrison, Mont.  
 William A. Weise—Fort Howard, Md.  
 Clarence E. Patton—Fort Lyon, Colo.  
 William F. Kennedy—Gulfport, Miss.  
 Ernest L. Martinson—Hines, Illinois  
 C. F. Burgess—Hot Springs, S. D.  
 William F. Davis—Huntington, W. Va.  
 Fred Reinders—Indianapolis, Ind.  
 John H. Driggs—Jefferson Barracks, Mo.  
 Aaron G. Dawson—Kecoughtan, Va.  
 Enoch Heath—Knoxville, Iowa  
 Albert J. Murphy—Ft. Washington, Md.  
 Melvin C. Hobson—Lake City, Fla.  
 John S. Tennant—Legion, Texas  
 E. L. Townsend—Lexington, Ky.  
 Arthur Benson—Lincoln, Nebraska  
 Carl Addleman—Livermore, Calif.  
 Erwin B. Newcomb—Los Angeles, Calif.  
 Edgar F. Shaner—Lyons, New Jersey  
 L. F. Gav—Marion, Ind.  
 William Evans—Marion, Illinois  
 Herbert H. Chaddick—Mendota, Wisconsin  
 Ernest Meyers—Memphis, Tennessee  
 L. F. David—Montgomery, Ala.  
 Walter A. Wilkins—Minneapolis, Minn.  
 Earl Bowers—Mountain Home, Tenn.  
 George A. Whittaker—Murfreesboro, Tenn.  
 Fred R. Pickering—Muskogee, Oklahoma  
 William G. Russell—Newington, Conn.  
 J. J. Gallahan—Northampton, Mass.  
 Peter Warmenhoven—North Little Rock, Ark.  
 Jacob Pyrah—Northport, L.I., N. Y.  
 Allen Baker—Oteen, N. C.  
 Anthony J. Betts—Outwood, Kentucky  
 Frank B. Hevern—Palo Alto, Calif.  
 Waldo F. McNaught—Perry Point, Md.  
 Hubert V. Stephenson—Pittsburgh, Pa.  
 C. D. Summers—Portland, Oregon  
 Allan D. Gunderson—Reno, Nevada  
 Marshall Bryarly—Roanoke, Va.  
 C. E. Cramer—Roseburg, Oregon  
 D. Q. Gould—Rutland Heights, Mass.  
 Harold L. King—Salt Lake City, Utah  
 E. E. Parsons—San Fernando, Calif.  
 James McKenzie—San Francisco, Calif.  
 J. M. Raish—Sheridan, Wyoming  
 Elmer Rickey—St. Cloud, Minn.

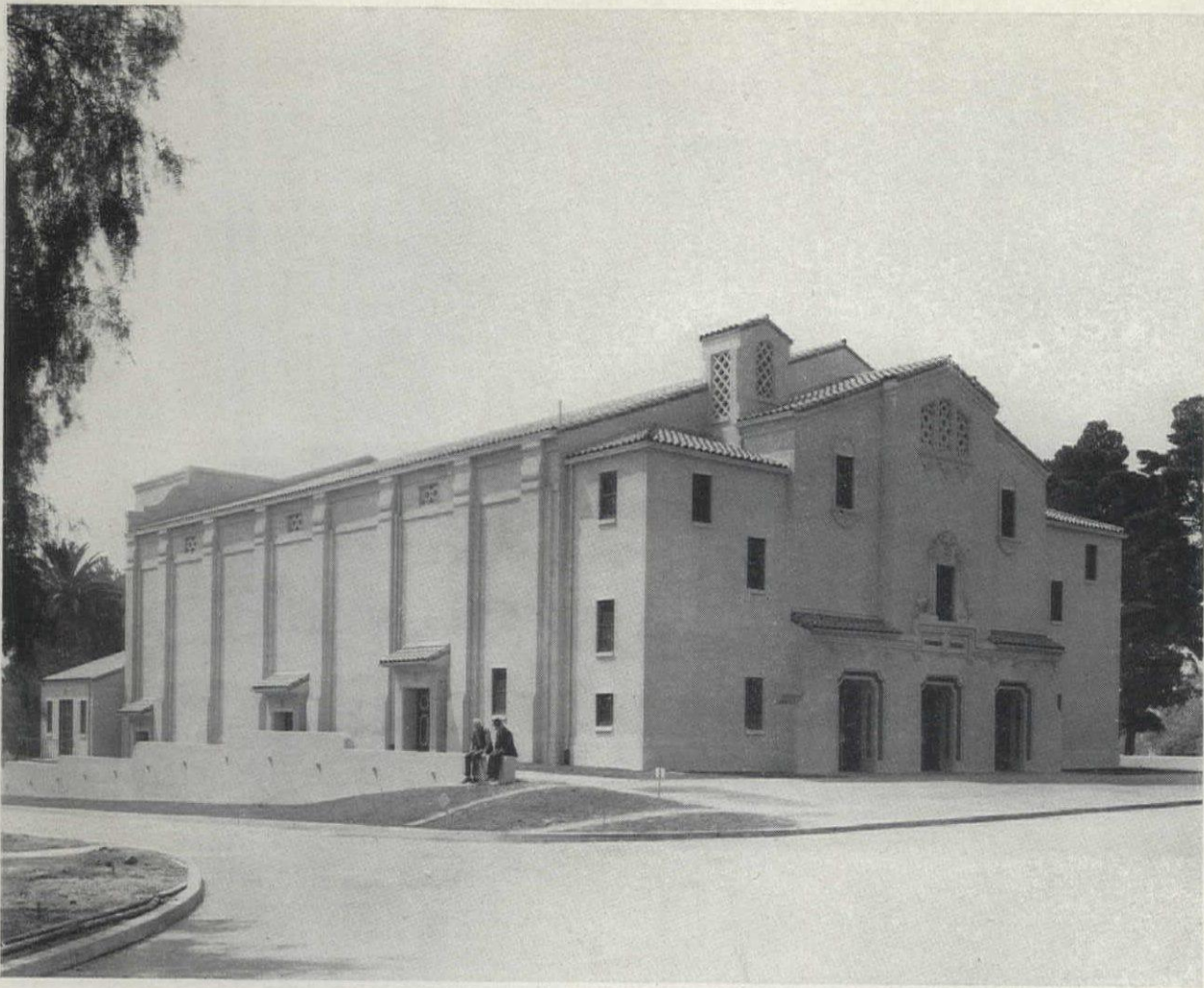
Harold F. Vogel—Sunmount, New York  
 Robert W. Marshall—Togus, Maine  
 Clarence E. Stinson—Tucson, Arizona  
 Harold H. Kisler—Tuscaloosa, Ala.  
 Charles H. Gibson—Tuskegee, Ala.  
 Joseph Kavanaugh—Waco, Texas  
 Glenn R. Stevens—Wadsworth, Kans. — (on  
 detail at Downey, (Ill.)  
 Otto Nash—Walla Walla, Wash.  
 Fred Gue—Washington, D. C.  
 Arthur W. Farley—Whipple, Arizona  
 Sam Kenney—White River Junction, Vt.  
 Mark C. Maxwell—Wichita, Kansas  
 Joseph A. Prudell—Wood, Wisconsin  
 E. J. Denn—West Roxbury, Mass.

*Assistant Utility Officers*

William Bocox—Bronx, New York  
 William F. Ring—Chillicothe, Ohio  
 Ralph Poore—Danville, Illinois  
 John F. Park—Dayton, Ohio  
 Clifford E. Reed—Downey, Illinois  
 Russell Walkup—Hines, Illinois  
 C. C. Hartman—Kecoughtan, Va.  
 Fred Cartier—Los Angeles, Calif.  
 Joseph Martin—Lyons, New Jersey  
 Joseph McCall—Mountain Home, Tenn.  
 Walter V. Dalton—Northport, L.I., N. Y.  
 Louis Schroeder—Perry Point, Md.  
 Con Tucker—Wadsworth, Kansas  
 Ralph H. Park—Wood, Wisconsin  
 \*Engineers and architects on permanent status at  
 field stations.



*Main Hospital Building, Veterans' Administration  
 Albuquerque, New Mexico*

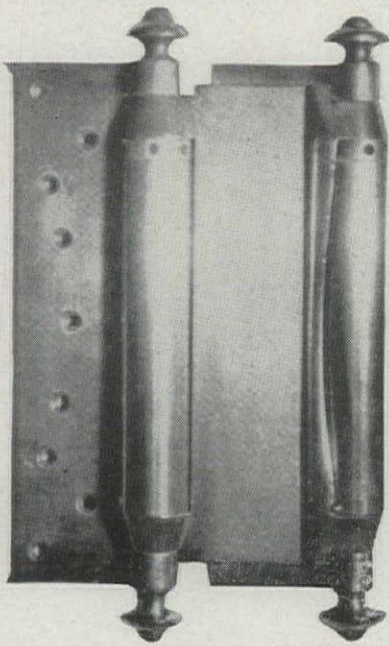


*Theatre Building, Veterans' Administration, Los Angeles, Calif.*



*Main Hospital Building, Veterans' Administration, Cheyenne, Wyo.*

## HALF-A-CENTURY ON A DOOR



*This is one of the hinges that swung the big front door of the old Bank of Manhattan, 40 Wall Street, New York City from 1880 until the old building made way for the present one. The hinges are still in excellent condition.*

LOOK FOR QUALITY IN BOMMER

NOW AND



POST WAR

BOMMER SPRING HINGE CO., Inc., Brooklyn 5, N. Y.  
Chicago Sales Office: 180 N. Wacker Drive

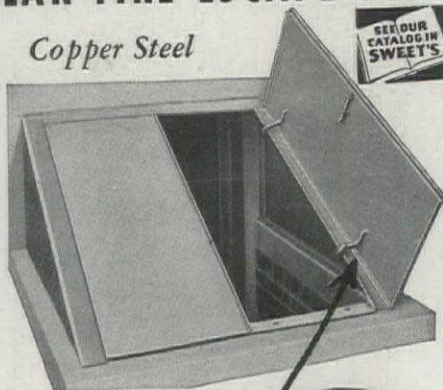
## IT'S A CELLAR FIRE ESCAPE TOO!

**BILCO**  
CELLAR  
BULKHEAD

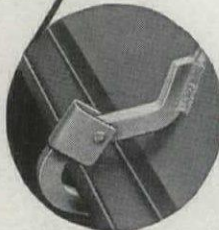
*Copper Steel*

SEE OUR  
CATALOG IN  
SWEET'S

FOR  
ACCESSIBILITY  
PERMANENCE  
SECURITY



You give the home cellar real utility when you provide a direct-to-the-yard cellarway. And in modern cellars with game rooms and workshops, *safety* demands a second exit. BILCO Hatchway Doors provide a modern, trouble-free and attractive outside entrance. Copper steel lasts a lifetime. Leak-proof, warp-proof, fire-proof, termite-proof and burglar-proof. Can't be blown or knocked shut.



Automatic Safety Catch

BILCO also specializes in  
BULKHEAD DOORS • STEEL ROOF SCUTTLES • SIDEWALK DOORS

**FILL OUT AND MAIL THIS COUPON TODAY!**

The BILCO Manufacturing Company  
165 Hallock Avenue, New Haven 6, Conn.  
Please send me specifications and prices of Bilco copper steel cellar bulkheads for homes and other structures.

Name.....  
Address.....  
City..... State.....  
Your Dealer's Name.....

## MECHANICAL CONTRACTORS

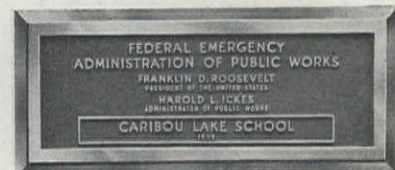
*The*  
**Frank A. McBride Company**



PATERSON, N. J.  
NEW YORK CITY  
CINCINNATI, O.

## BRONZE TABLETS

MEMORIALS • HONOR ROLLS  
COMMEMORATIVE PLAQUES



**LETTERS**

FOR BUILDING FRONTS

*Extensive variety of  
styles and finishes.*



Send for Illustrated Literature.

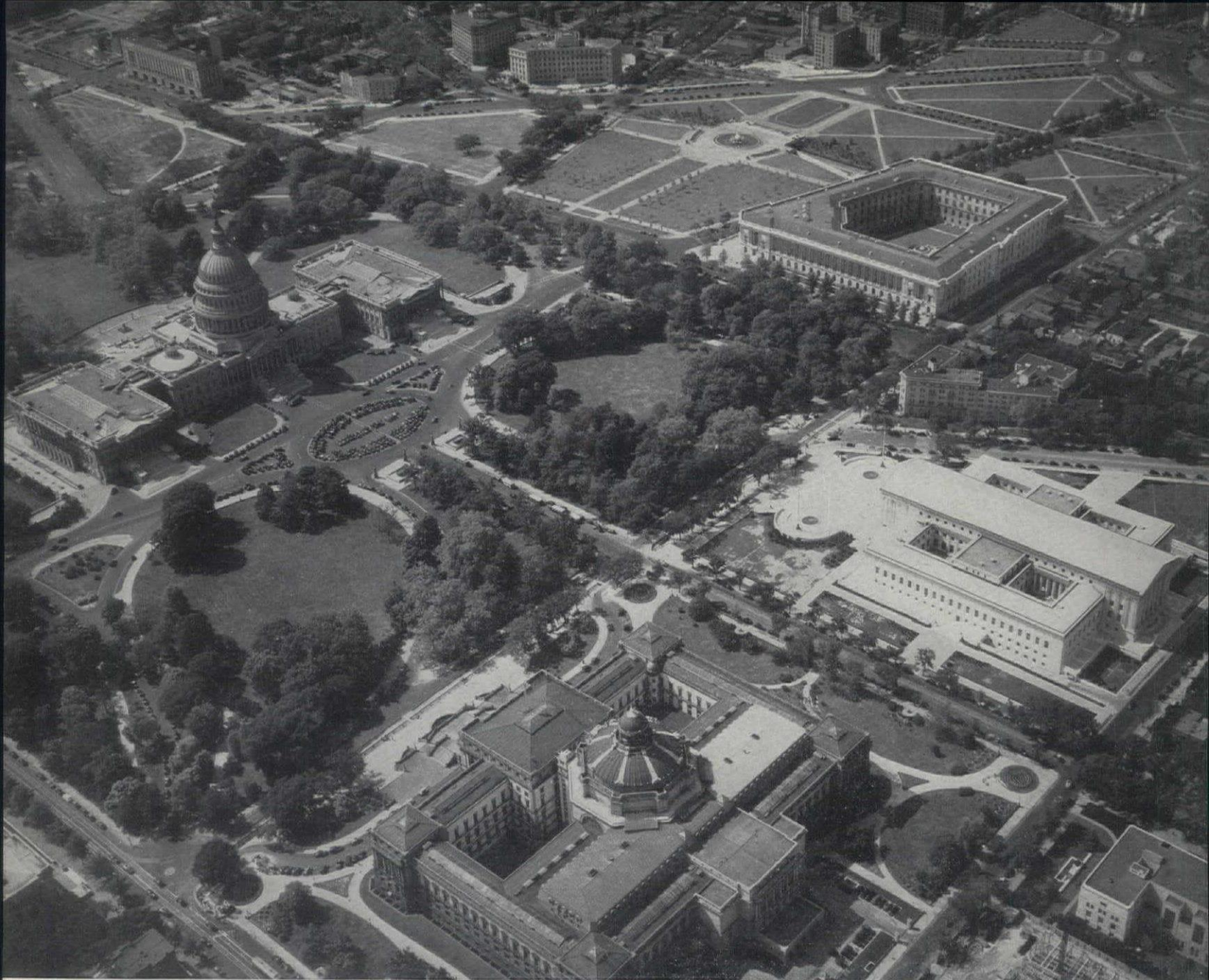
**UNITED STATES BRONZE SIGN CO., Inc.**

"Bronze Tablet Headquarters"

570 Broadway, New York 12, N. Y.

FOUNDERS • FABRICATORS • DESIGNERS





## COMMISSION OF FINE ARTS

Gilmore D. Clark, New York City, Landscape Architect, Chairman.

William F. Lamb, New York City, Architect, Vice-Chairman.

Paul P. Cret, Philadelphia, Pa., Architect.

John A. Holabird, Chicago, Ill., Architect.

Henry V. Poor, 3rd, New York City, Painter.

Ralph Stackpole, Cloverdale, Calif., Sculptor.

David E. Finley, Washington, D. C., Art Critic.

Offices in the Interior Department Building  
Phone REpublic 1820, branch 2097

**T**HE duties of the National Fine Arts Commission embrace advising upon the location of statues,

fountains, and monuments in public squares, streets and parks in the District of Columbia; upon the selection of models for statues, fountains and monuments erected under the authority of the United States, and the selection of artists for their execution; also for medals, insignia and coins; upon plans and designs for public structures and parks in the District of Columbia, as well as upon all questions involving matters of art with which the Federal Government is concerned.

It is interesting to note the personnel of the original Fine Arts Commission of 1910, which consisted of Daniel H. Burnham, chairman, Daniel Chester French, Frederick Law Olmstead, Thomas Hastings, Francis D. Millet, Cass Gilbert and Charles Moore.

# NATIONAL CAPITAL PARK AND PLANNING COMMISSION



## MEMBERS OF THE COMMISSION

Major General U. S. Grant, 3rd, Chairman  
Newton B. Drury, Director, National Park Service,  
Executive Officer  
(Alternate: A. E. Demaray, Associate Director,  
NPS—Acting Executive Officer)  
Major General Eugene Reybold, Chief of Engineers,  
U. S. Army  
(Alternate: Brig. Gen. John J. Kingman)  
Col. Charles W. Kutz, Engineer Commissioner, D.C.  
(Alternate: Col. J. D. Arthur, Asst. Engr. Comr.)  
Hon. Jennings Randolph, Chairman, House Commit-  
tee on District of Columbia  
Hon. Theodore G. Bilbo, Chairman, Senate Commit-  
tee on District of Columbia  
Mr. Lyle F. Watts, Chief, Forest Service  
(Alternate: L. F. Kenipp, or Edward C. Behre)  
Henry V. Hubbard  
William Adams Delano  
Jesse C. Nichols

## PLANNING STAFF OF THE COMMISSION

John Nolen, Jr., Director of Planning  
T. S. Settle, Secretary  
Norman C. Brown, Land Purchasing Officer  
T. C. Jeffers, Landscape Architect  
Max S. Wehrly, City Planner  
James A. Ryder, Engineer

## COORDINATING COMMITTEE FOR THE COMMISSION

Mr. E. A. Schmitt, U. S. Engineer Office, Chairman  
John Nolen, Jr. NCP&P Com, Vice Chairman  
T. C. Jeffers, NCP&P Com.  
T. S. Settle, NCP&P Com.  
J. A. Ryder (Secretary, without vote)  
Irving C. Root, National Capital Parks  
Allan S. Thorn, Public Buildings Association  
Col. J. D. Arthur, D. C.  
H. C. Whitehurst, D. C.  
Harold A. Kemp, D. C.  
F. F. Healy, D. D.  
R. O'Clouser, D. C.  
R. C. Roberts, D. C.

The following are also members, called to meet-  
ings when matters of special interest to them are to  
be discussed:

Dept. of Vehicles & Traffic, Director  
Maryland-NCP&P Com, Director of Planning  
Arlington County Planning Commission, County  
Planning Engineer  
National Park Service, Chief of Planning, Branch of  
Plans and Design  
Alley Dwelling Authority, Executive Officer  
(Wm. A. Van Duzer)  
(Fred W. Tuemmler)  
(Vacant)  
(T. C. Vint—alternate: Harry Thompson)  
(John Ihlder)



*Administration Building, Great Smokies*

## BRANCH OF PLANS AND DESIGN NATIONAL PARK SERVICE

DEPARTMENT OF THE INTERIOR  
*Chicago, Illinois*

Thos. C. Vint, Chief Landscape Architect

*Reports to the Director of the National Park Service*

**T**HE National Park Service was founded in 1916. The importance of careful planning was recognized from the start. The Landscape Architectural Division was started, with one employee, in 1918. The Division was at that time located in Los Angeles, California. Personnel was added from time to time, as the development program increased. The office was moved to San Francisco in 1926.

Until 1930 virtually all National Park activity was concentrated in the west. Then, the acquisition of several national parks in the east led to the establishment of an eastern office of the Division in Yorktown, Virginia, to handle work east of the Mississippi, with the western office at San Francisco handling work of the west, including the territories of Hawaii and Alaska. By 1933 there were 20 employees in the two offices, approximately half of whom were landscape architects and the other half were architects. In that year a number of national monuments, national cemeteries, national military parks, and national historical parks, formerly under the administration of the U. S. Forest Service or the War Department were trans-

ferred to the National Park Service. That year also saw the tremendous increase in development work through the inauguration of the PWA, CCC, WPA, and similar relief programs. The name of the present "Branch of Plans and Design" was adopted in 1933, and the eastern office, together with the Chief Landscape Architect from the western office, were removed to headquarters in Washington, D. C.

The Branch reached its peak size of 246 professional employees in 1934-35. Due to the steadily increasing scope and location of National Park Service activities, four regional offices were established in 1936, in lieu of eastern and western offices. These regional offices were established at Richmond, Virginia; Omaha, Nebraska; Santa Fe, New Mexico; and San Francisco, California. The Chief Landscape Architect, with a small staff, remained in the Director's Office, which was removed from Washington to Chicago in 1942, for the duration of the war. In addition to these offices, the Branch of Plans and Design has two project offices, one at Roanoke, Virginia, and one at Tupelo, Mississippi, whose activities are directly con-

cerned with the design and construction of the Blue Ridge and Natchez Trace Parkways. A small staff of architects and landscape architects remains in Washington as a part of the staff of the National Capital Parks Office. The present wartime staff in the various offices of the National Park Service includes a total of ten architects and eighteen landscape architects.

The bulk of the work in normal times, consists of many small projects, at widely scattered areas, involving the design of park administrative, utility and residential buildings, and the location and design of roads, trails and parkways, together with the necessary bridges, guard rail, and tunnel portals. All work is integrated to, and controlled by, carefully prepared Master Plans for each park or area.

One of the activities of the Branch has been the directing of an Historic American Buildings Survey throughout the country, covering many public and privately owned buildings which will be lost to pos-

terity through fire, obsolescence, and change of ownership. Measured drawings and photographs were prepared and filed in the Library of Congress, and reproductions may be obtained there for nominal sums. These drawings cover approximately 6,400 structures, ranging from New England covered bridges to pre-historic Indian pueblos in the southwest.

Activities of the Branch during the war have been greatly curtailed, consisting largely of essential maintenance and repairs to existing facilities, and to cooperating in approved war-time uses of many facilities or resources. No funds have yet been provided by the Congress for undertaking surveys and plans for postwar planning. The Branch is preparing manuals on a number of professional subjects for the guidance of architects and landscape architects who may be added to the staff in the future.



**T**HE National Capital Parks office is a subdivision of the National Park Service under the Department of the Interior and is responsible for the operation, control and maintenance of the park system of the District of Columbia and certain other areas within and adjacent to the District. The officers of this organization which would have to do with phases of design, construction and maintenance are:

Mr. Irving C. Root, Superintendent

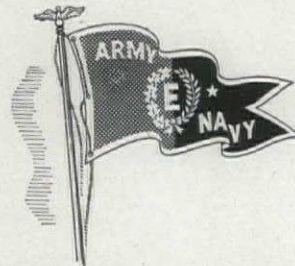
Mr. Harry T. Thompson, Assistant Superintendent, in charge of the Planning and Construction Division

Mr. P. E. Smith, Chief of the Engineering Division

Mr. George W. Harding, Chief of the Horticulture and Maintenance Division

Mr. Roger J. Hudson, Chief of the Repair and Construction Division

# DOUBLE HUNG METAL WINDOWS S. H. POMEROY CO.



FACTORY & MAIN OFFICE

25 Bruckner Blvd.

NEW YORK 54, N. Y.

# DEPARTMENT OF AGRICULTURE

## U. S. FOREST SERVICE

Claude R. Wickard, Secretary of Agriculture  
Lyle F. Watts, Chief of U. S. Forest Service  
T. W. Norcross, Chief, Division of Engineering,  
U. S. Forest Service  
W. Ellis Groben, Chief Architect  
Edw. C. Hamilton, Assistant Architect

The scope of the work is generally reduced for duration of war,—only building work in meantime being emergency construction. The normal work is the Building Construction Program of the Forest Service, which includes the following types of buildings:

- Repair shops for equipment, motorized, etc.—garages
- Storage buildings—warehouses
- Administrative sites—office, warehouse, ranger and assistant ranger's dwellings, garages
- Lookout Towers—for forest fire detection
- Forest highway bridges—wood (log) and stone

The Service is decentralized and includes ten regions as follows:

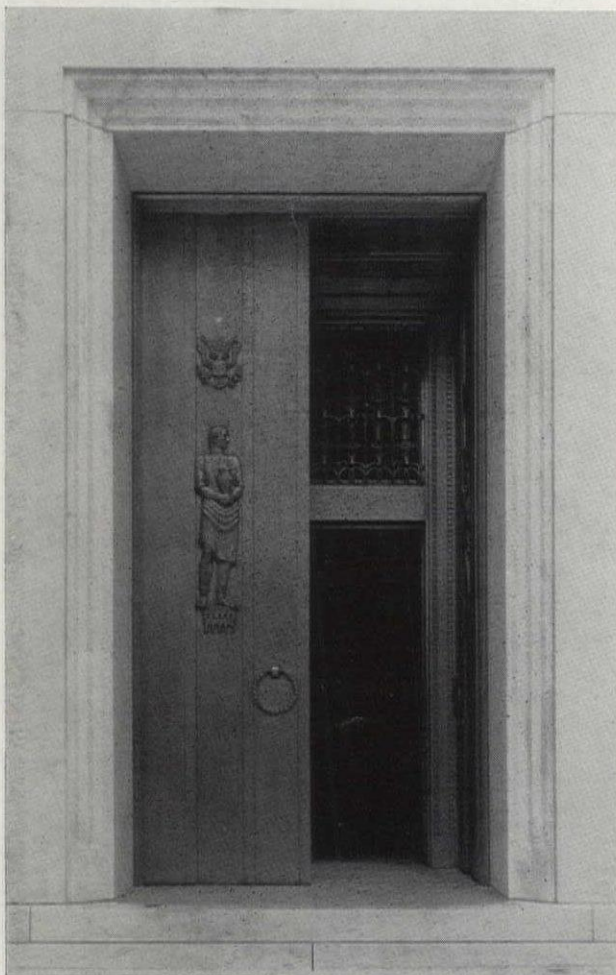
- 1—Missoula, Montana (H. F. Caughlan)
- 2—Denver, Colorado (C. A. Gould)
- 3—Albuquerque, New Mexico (H. B. Waha)
- 4—Ogden, Utah (Geo. L. Nicols)
- 5—San Francisco, California (A. P. Dean)
- 6—Portland, Oregon (J. Frankland)
- 7—Philadelphia, Pennsylvania (J. C. Dort)
- 8—Atlanta, Georgia (R. E. Pidgeon)
- 9—Milwaukee, Wisconsin (H. Coleman)
- 10—Juneau, Alaska (A. E. Glover)

Address of Washington office

6317 South Agricultural Building  
Washington 25, D. C.

Telephone number of Department

Republic 4142



## ANNEX TO THE LIBRARY OF CONGRESS

DAVID LYNN  
ARCHITECT

PIERSON & WILSON  
CONSULTING ARCHITECTS

Among the Washington structures in which Flour City metal work is installed are the following:

- WASHINGTON NATIONAL AIRPORT
- DEPTS. OF LABOR & INTERSTATE COMMERCE
- ANNEX TO THE LIBRARY OF CONGRESS
- HOME OWNERS LOAN CORPORATION
- NATIONAL ZOO BUILDING
- WASHINGTON POLICE COURT
- WAR DEPARTMENT BUILDING
- DEPARTMENT OF JUSTICE
- ARLINGTON BUILDING
- SENATE OFFICE BUILDING

## THE FLOUR CITY ORNAMENTAL IRON CO.

MINNEAPOLIS 6, MINNESOTA

Representatives in Principal Cities

*Artisans in all Metals*

BRONZE DOORS AT SOUTH ENTRANCE

# TENNESSEE VALLEY AUTHORITY

## KNOXVILLE, TENNESSEE

### HEAD OF AGENCY

Boards of Directors:

David E. Lilienthal, Chairman  
 Harcourt A. Morgan, Vice Chairman  
 James P. Pope, Director

### HEAD OF CONSTRUCTION OR ARCHITECTURAL ORGANIZATION

C. E. Blee, Chief Engineer  
 George R. Rich, Chief Design Engineer  
 A. L. Pauls, Chief Construction Engineer

### HEAD OF ARCHITECTURAL SUB-ORGANIZATION

#### *Architectural design initiation*

H. K. Menhinick, Director  
 Roland Wank, Architectural Consultant  
 Mario Bianculli, Principal Architect

#### *Architectural design production*

George R. Rich, Chief Design Engineer  
 Harry B. Tour, Principal Architect

The scope of work handled by this organization is architectural work relative to major engineering projects such as dams and hydro plants, steam plants, temporary and permanent camp developments, office buildings, warehouses, shops, research buildings, public reception buildings, medical buildings, garages

and a great number of miscellaneous structures necessary for the developments specified in the TVA Act.

The list of buildings designed in the organization would be a long one. It would include the following dams and hydro plants: Norris, Apalachia, Ocoee, Hiwassee, Fontana, Cherokee, Douglas, Fort Loudoun, Watts Bar, Chickamauga, Guntersville, Wheeler, Pickwick and Kentucky, and related buildings and camps, the Watts Bar steam plant, river terminal buildings at Knoxville and Chattanooga and a great variety of miscellaneous buildings.

#### Headquarters

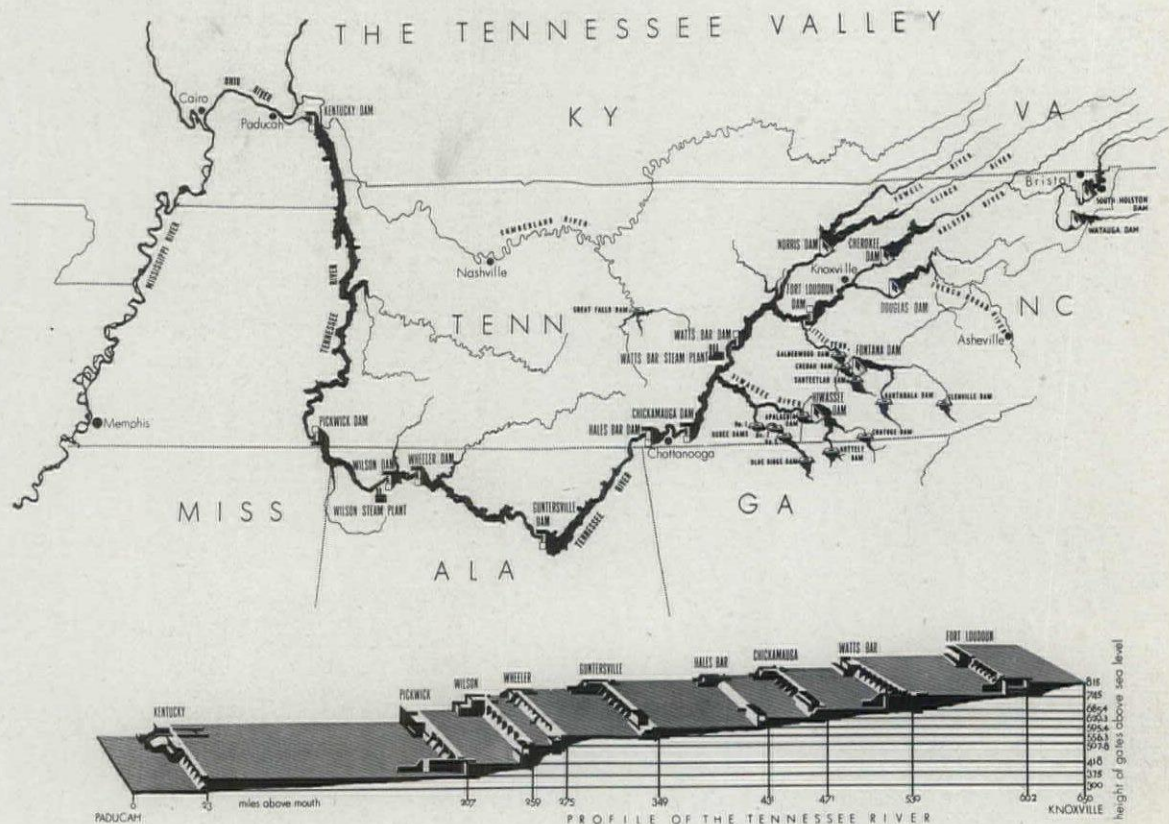
Knoxville, Tennessee

#### Address of Washington Office

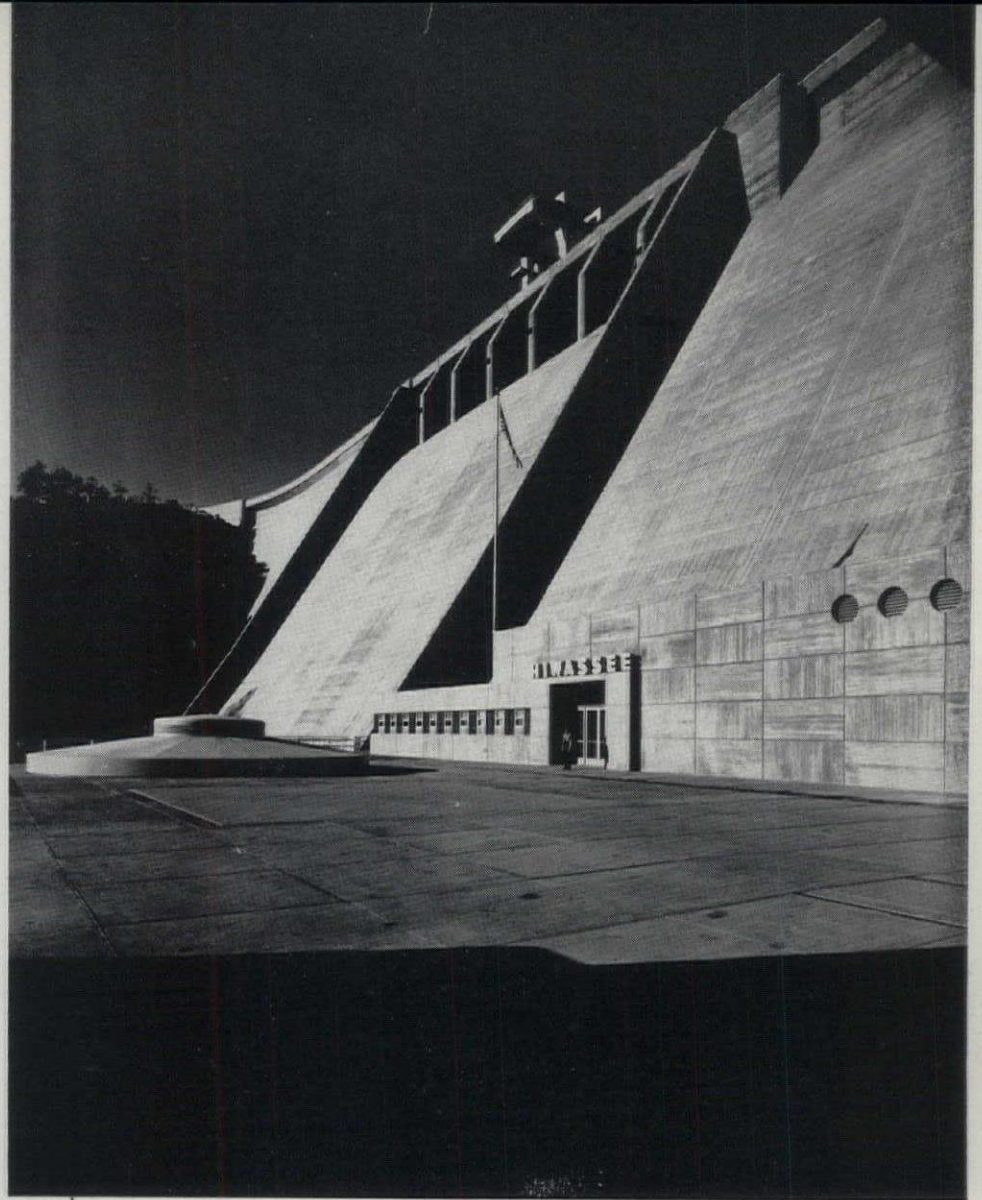
Marguerite Owen, TVA Representative  
 Tennessee Valley Authority  
 Woodward Building  
 Washington 25, D. C.

#### Telephone number of department

Knoxville—2-7181  
 Washington—National 7031



*Hiwassee Dam*



*Designed by TVA*



*Chickamauga Dam*



## NATIONAL HOUSING AGENCY FEDERAL PUBLIC HOUSING AUTHORITY

1. Philip M. Klutznick, Commissioner  
Federal Public Housing Authority
2. W. P. Seaver  
Assistant Commissioner for Development
3. Gilbert L. Rodier (Architect)  
Director, Technical Division
- 3A. R. J. Wadsworth (Architect)  
Assistant Director, Technical Division
4. Other charge persons:  
S. L. Tesone, Architect, Chief, Architectural Section  
K. H. N. Newton, Site Planning Architect; Chief,  
Site Planning Section  
Paul C. Campbell, Civil Engineer; Chief, Site Engi-  
neering Section  
V. T. Manas, Mechanical Engineer, Chief, Mechanic-  
al-Electrical Section  
A. M. Korsmo, Structural Engineer, Chief, Struc-  
tural Section  
C. F. Fisher, Construction Cost Analyst, Chief, Ma-  
terials and Specifications Section
5. Architects, Specification Writers and Engineers:

### *Architects*

|                    |                         |
|--------------------|-------------------------|
| Rhees Burket       | Clarence E. Olschner    |
| Elisabeth Coit     | Daniel J. Pontone       |
| F. Morse Holcomb   | George C. Sponsler, Jr. |
| Alexander Knowlton | Oscar Vatet             |
| John Lamb          | Donald D. Walker        |
| Ira H. Nylen       |                         |

Stanley H. Brewster, Site Planning Architect  
Kate Edelman, Community Facilities Advisor  
Lee Winters, Civil Engineer  
Nathan Levy, Mechanical Engineer  
Charles Waldmann, Mechanical Engineer  
B. A. Howes, Architectural Engineer (Materials)  
Herbert W. Keil, Architectural Engineer (Specifica-  
tions)

6. The Federal Public Housing Authority is the constituent organization in the National Housing Agency which deals with Public Housing. It administers the United States Housing Act of 1937 as amended, for the construction of low rent housing and slum clearance as well as War Housing provided for by various public laws; sets up procedures and



standards for development and management of projects.

7. While this agency sets up the standards for the development of projects the design is usually the product of local architects and engineers who are required to design within the prescribed standards and cost limitations. The supervision of construction and management of projects is usually the responsibility of local housing authorities.

8. In addition to the Central Office in Washington the Authority works through eight regional offices, one General Field Office and a Detroit Area Office. The location of these offices, together with the name of the officer in charge, is listed below:

Region I—24 School Street, Boston 8, Massachusetts.  
Sumner K. Wiley, Director

Region II—270 Broadway, New York 7, New York.  
John A. Kervick, Director

Region III—201 N. Wells Street, Chicago 6, Illinois.  
Orvil Olmsted, Director

Region IV—Georgia Savings Bank Building, Peachtree and Broad Streets, Atlanta 3, Georgia. John P. Broome, Director

Region V—1411 Electric Building, Seventh and Taylor Streets, Ft. Worth 2, Texas. Marshall W. Amis, Director

Region VI—760 Market Street, San Francisco 2, California. Langdon W. Post, Director

Region VII—Skinner Building, Fifth Avenue, Union Street, Seattle 1, Washington. Frank E. Crutsinger, Director

Region VIII—2073 E. Ninth Street, Cleveland 15, Ohio. Hugo Schwartz, Director

General Field Office—1201 Connecticut Avenue, N. W., Washington 25, D. C. Oliver Winston, Director

Detroit Area Office—Barlum Tower Building, Cadillac and Bates Streets, Detroit 5, Michigan.  
George Schermer, Area Representative

Central Office—1201 Connecticut Avenue, Washington 25, D. C. Telephone: Executive 4160

The Construction Division of FPHA initiates policies, standards and procedures governing construction and inspection activities, and provides advice and assistance to regional offices in their execution. It prepares reports dealing with construction problems and deals with conditions relative to labor and material:



*Housing at Austin, Texas—Designed by USHA*

# U. S. PUBLIC HEALTH SERVICE

## HOSPITAL FACILITIES SECTION

*In Charge*

DR. VANE M. HOGE, *Senior Surgeon*

*Chief Architect*

MARSHALL SHAFFER

THE Hospital Facilities Section is a small research group which develops standards of design for hospitals, health centers and related health facilities buildings. The Section acts in an advisory capacity to Federal, State and municipal agencies, as well as to private architects.

When in 1941 the Community Facilities Bill was enacted, making Federal funds available for the construction of hospitals and health centers, the need for professional guidance became evident. As a result, the United States Public Health Service, as a part of its States Relations Division, established a Hospital Facilities Section. Its personnel includes specialists in medicine, hospital administration, nursing and hospital architecture and equipment. The new unit's function was, and still is, to furnish, upon request, advice and consultation services to local health agencies, to architects and to state and Federal agencies concerned with the administration of hospital building programs.

Hospital planning involves complex and unrelated

questions of function, form and engineering. Many architects have had insufficient opportunities to become fully acquainted with highly specialized problems in this field. Physicians, who are usually consulted by the architects, are not as a rule sufficiently conversant with the problems of interrelationship and integration of the various service units, and cannot usually give the kind of comprehensive advice necessary to insure maximum efficiency with minimum expense. What may work out best in one locality may not be best for another. Obviously some sort of clearing house for technical information, some continuing body of research, investigation and comparison, could cut down the amount of trial and error involved in our progress. The Hospital Facilities Section supplies this need. It is small in personnel. Its Senior Architect is Marshall Shaffer, A.I.A., whose experience in private practice includes hospital work on both the Atlantic and Pacific coasts.

*Henry H. Saylor in the Journal of the American Institute of Architects.*

## THE JOHN SWENSON GRANITE CO.

CONCORD, N. H.

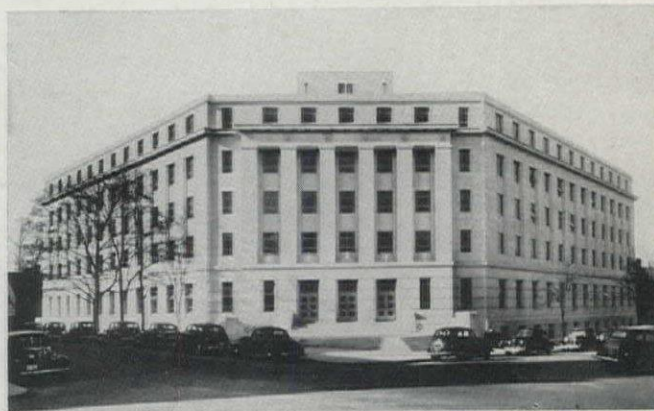


*Quarriers and Fabricators  
of Swenson Gray Granite  
and Swenson Pink Granite*



NEW YORK OFFICE  
101 PARK AVE.  
Mr. F. A. Fichtel

## WHITE MOUNT AIRY GRANITE



Education Bldg., Raleigh, N. C. Northup & O'Brien, Archts. Exterior walls are of White Mount Airy Granite.

### **Specify Mount Airy Granite with Complete Confidence:**

- (1) Uniform in color and quality.
- (2) Unsurpassed in dignity and beauty.
- (3) Economically produced in the largest and best equipped granite quarry and cutting plants in the United States.

*Preliminary estimates and samples furnished without obligations to Architects and Builders.*

## **THE NORTH CAROLINA GRANITE CORPORATION**

Mount Airy, North Carolina

Since 1889, quarriers and fabricators of Mount Airy Granite.

*The FEDERAL ARCHITECT • APRIL-JULY, 1945*



## UNITED STATES DEPARTMENT OF THE INTERIOR

OFFICE OF INDIAN AFFAIRS

John Collier

*Commissioner of Indian Affairs*

*Director of Construction Division*

Edward A. Poynton

*Chief Architectural Section*

Carl L. Cederstrand

*Architect in charge of hospital design*

Laurence P. Johnston

*Chief, Mechanical Section*

John C. Helfrich

*Architects:*

Carl L. Cederstrand  
Laurence P. Johnston  
C. Stephen Pierpoint  
Albert E. van der Loo  
Henry E. Forsberg  
John W. Townsend  
George M. Shinno  
Timothy Ironteeth

*Engineers:*

John C. Helfrich  
Carroll Martell  
Parry T. McCurdy  
True C. Steffenhagen  
Paul J. W. Schultz  
F. A. Mason  
Wade Green

The scope of work covers preparation of designs, working drawings, specifications, and estimates for construction by either general contract or "force account" building, utility and communication (radio and telephone) systems on Indian reservations in the United States and in Alaska.

*Major buildings designed:*

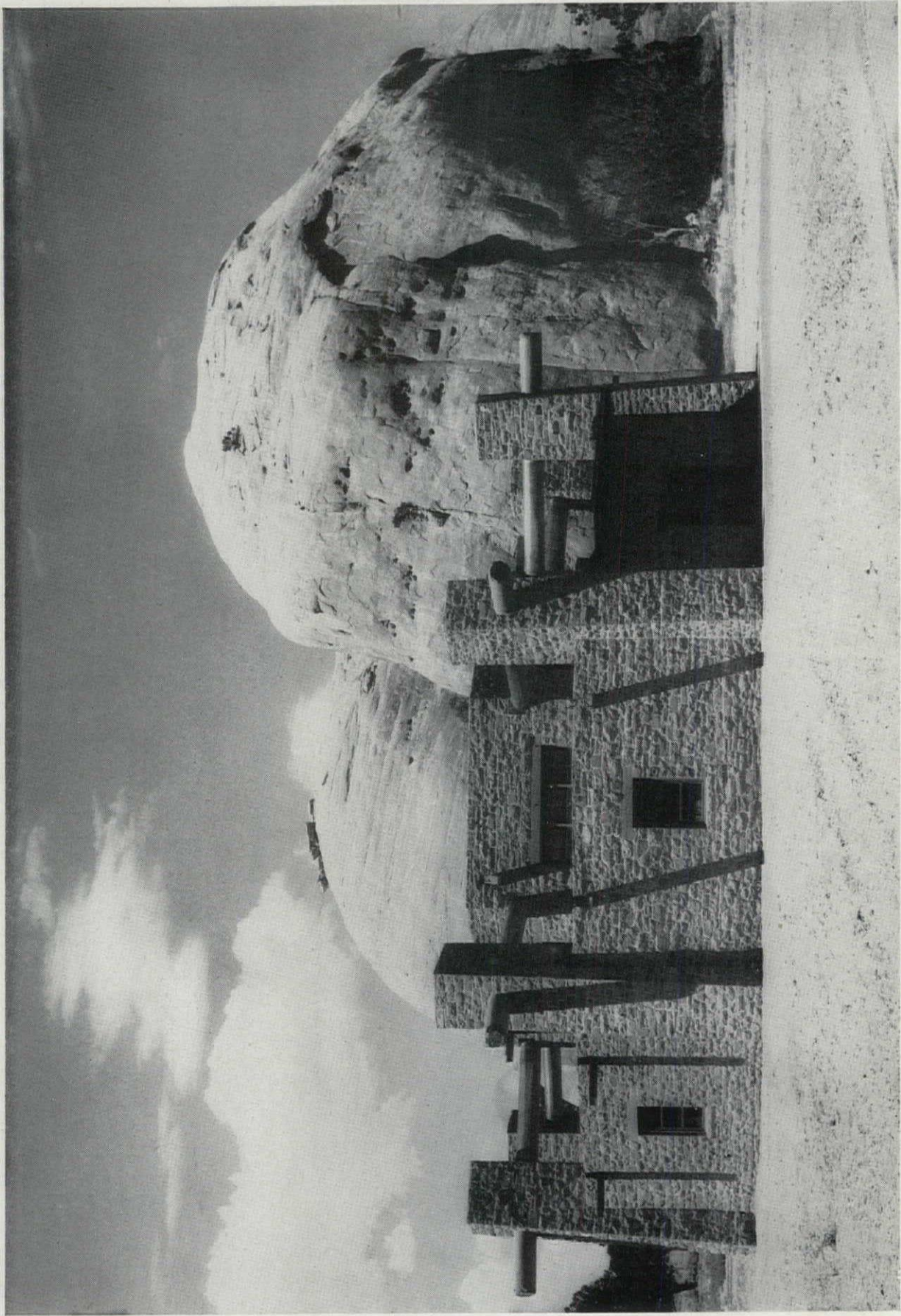
- (a) Tacoma Indian Hospital, Tacoma, Washington, 350 beds, cost \$1,500,000.

- (b) Dormitories, schools, etc., Kiowa Indian Agency, Oklahoma.  
(c) Dormitories, school facilities, Carson Indian Agency, Nevada.  
(d) Talihina Hospital group (Schmidt, Garden & Erikson, Chicago, architects), Talihina, Oklahoma.  
(e) Pima Indian Agency Hospital, Sacaton, Arizona.  
(f) Navajo Indian Agency headquarters buildings (Mayer, Murray & Philip, New York City, architects), Window Rock, Arizona.  
(g) Sioux Sanatorium, Rapid City, South Dakota.  
(h) Pine Ridge Agency Nurses' Home, Pine Ridge, South Dakota.  
(i) Hospital at Crown Point, Navajo Agency, Arizona, (Mayer, Murray & Philip, New York City, architects).

*District Offices: (Main office now in Chicago)*

Salt Lake City, Utah—Chas A. Leech  
Phoenix, Arizona—Dan H. Richards  
Billings, Montana—Ray S. Cooley  
Seattle, Washington—Marion J. Gober  
Juneau, Alaska—Ralph Mize

Office of Indian Affairs (Liaison Staff only) Interior Dept. Building. Main Office, Merchandise Mart, Chicago 54, Illinois.



*Council House*

# OFFICE OF THE MUNICIPAL ARCHITECT

WASHINGTON, D. C.

Nathan C. Wyeth  
Municipal Architect

Deputy Director of Construction  
Archie G. Hutson

Chief of Architectural Division in Office  
Hunter L. Virnelson

Chief of Mechanical Division of Municipal Architecture Office  
Walter L. Nelson

Chief of Structural Division of Municipal Architecture Office  
Victor J. Givotovsky

Chief of Specification Division of Municipal Architecture Office  
Joseph J. Accardo

Chief of Special Projects—Architectural Division of Municipal Architect Office  
Arved L. Kundzin

## *Specification Division*

J. J. Accardo  
W. F. Anderson

## *Maintenance Division*

R. E. Robson

## *Construction Division*

A. H. Schutz  
A. G. Hutson  
L. H. Browne  
J. H. Holland  
J. W. Darwin  
J. F. Dalton  
W. O. Munday  
R. H. Bigelow

## *Architectural Division*

H. L. Virnelson  
A. L. Kundzin  
J. I. Cuthriell  
C. J. Mitchell  
Osgood Holmes  
S. W. Callahan  
C. Richardson  
D. B. Walker  
J. A. deGroot  
J. J. Kennelly

## *Structural Division*

V. T. Givotovsky  
R. L. Fourchy  
H. S. Poppican  
G. I. Sawyer  
W. H. Iglehart

## *Mechanical Division*

W. L. Nelson  
O. S. Kern  
W. F. Egan  
B. H. Wildermuth  
L. W. Carter

The work of this office consists of the preparation of plans, specifications, superintendence and inspection of the construction of all buildings erected by the District of Columbia, consisting chiefly of schools, fire engine houses, police stations, hospitals, libraries, training schools, reformatories, etc., and in addition of the preparation of drawings and estimates for new buildings and repairs to existing buildings for the various municipal institutions.

Typical Buildings: Woodrow Wilson High School, Calvin Coolidge High School, Municipal Center Group (East Administration Building, Municipal Court Building), D. C. National Guard Armory (Police Court Building, Juvenile Court Building), D. C. Recorder of Deeds Building, Tuberculosis Sanatoria, near Glenn Dale, Md. Miscellaneous hospital, jail, school and library buildings.

## Address of Washington Office

420 District Building  
14th & E. Streets, N. W.  
Washington, D. C.

## Telephone number

National 6000  
Branch 572—(Extension of Municipal Architect, D. C.)



## ARCHITECT OF THE CAPITOL

Office in Basement of the Capitol  
Telephone National 3120, branches 95, 125, 126, 940

David Lynn, Architect  
Horace D. Rouzer, Assistant Architect  
Charles A. Henlock, Administrative Officer  
Arthur E. Cook, Supervising Engineer  
August Eccard, Civil Engineer  
Charles R. Torbert, Engineer in Charge (House Wing)  
Timothy Murray, Engineer in Charge (Senate Wing)  
William A. Frederick, Landscape Architect and Horticulturist

Robert L. Harrison, Chief Engineer (Power Plant)  
J. M. Cowell, Engineer (Power Plant)  
William H. Hall, Engineer (Power Plant)  
R. D. Holcomb, Electrical Engineer  
H. B. Sommer, Elevator Engineer  
Norman A. Hollister, Air Conditioning Engineer  
John J. Kearney, Custodian Senate Office Building  
Charles E. Alden, Assistant Custodian Office Building  
Edward Brown, Superintendent House Office Buildings  
Frank Clarkson, Assistant Superintendent House Office Buildings

# U. S. DEPARTMENT OF COMMERCE

## NATIONAL BUREAU OF STANDARDS

There are no actual construction or architectural units in the National Bureau of Standards. However, there are a number of units set up for simplification, standardization, testing and research work in building materials and practices. The names of the sections or divisions and the chiefs of each are as follows:

### Sections

*Building Codes*, G. N. Thompson, Chief  
*Building Practices and Specifications*, V. B. Phelan, Chief  
*Cement and Concreting Materials*, J. Tucker, Jr., Chief

*Masonry Construction*, D. E. Parsons, Chief  
*Lime and Gypsum*, L. S. Wells, Chief  
*Stone*, D. W. Kessler, Chief  
*Fire Resistance*, S. H. Ingberg, Chief  
*Paints, Varnishes, etc.*, E. F. Hickson, Chief

### Divisions

*Trade Standards*, I. J. Fairchild, Division Chief  
*Simplified Practice*, E. W. Ely, Division Chief

In addition to the above, much of the activity of other units is in connection with building materials.

## "WILLIAMS" REVERSIBLE WINDOW FIXTURES

on a standard double hung window enable all window cleaning to be done from inside and at floor level. This assures SAFETY and ECONOMY. Sash are easily operated, non-rattling and can be tilted for overhead ventilation.

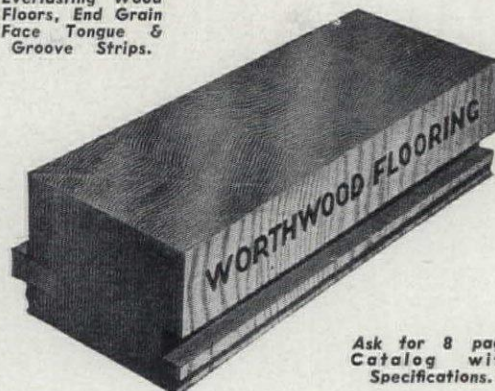
Have been installed in thousands of buildings during the last 41 years, including THE NAVAL MEDICAL CENTER, Bethesda, Md., THE FITZSIMONS GENERAL HOSPITAL, Denver, Colo., and THE NAVY HOSPITAL, Philadelphia, Pa.

*Installation made by our own trained mechanics*

## THE WILLIAMS PIVOT SASH CO.

1827 E. 37th St., Cleveland 14, Ohio

Everlasting Wood  
Floors, End Grain  
Face Tongue &  
Groove Strips.



Ask for 8 page  
Catalog with  
Specifications.

### INSTALLATIONS

#### from New England to Pearl Harbor

- 42 Army, Navy, Air Force Shops
- 90 United States Post Offices
- 39 Vocational School Shops
- 13 Armory Drill Halls
- 12 Other Government Buildings
- 32 Industrial Plants
- 10 Gymnasiums

*Sold through Local Flooring Firms*

*Producer*

**Worth Lumber Company**  
Seattle 1, Washington



In Affectionate Consideration of a Valued Friendship which has given us a renewed Faith in our Brothers, we append our signatures in Tribute to ED ROBERTS, Associate, Fellow Traveller and honored long-time Member of the U.S. Public Buildings Administration

*Managers*

|                            |                              |  |
|----------------------------|------------------------------|--|
| <i>Flora H. Farrington</i> | <i>Irving E. Volz</i>        | <i>Wanda and DeWelle Logan L. P. P. P.</i> |
| <i>Earl R. Shepard</i>     | <i>Harrison R. Egge</i>      | <i>Luippa</i>                              |
| <i>Mrs. E. Connor</i>      | <i>Harison B. Farrington</i> | <i>Chas. W. Davis</i>                      |
| <i>Robert D. Dean</i>      | <i>Aileen B. Burnham</i>     | <i>Jessie V. Volz</i>                      |
| <i>William H. Volz</i>     | <i>Ruth M. Harper</i>        | <i>Jean Volz</i>                           |
| <i>Lee Shepard</i>         | <i>Carl Nelson</i>           | <i>Margaret McNairy</i>                    |
| <i>Zella Davis</i>         | <i>D. B. Roben</i>           | <i>Ray M. McNairy</i>                      |
| <i>E. J. Rice</i>          | <i>Gertrude Dick</i>         | <i>E. Rafferty + Wife</i>                  |
| <i>Edna P. Hale</i>        | <i>Jan Darrin</i>            | <i>Carl Constantine</i>                    |
| <i>H. Stanton</i>          | <i>Ruth E. Jenner</i>        | <i>Robert</i>                              |

*Lillian M. Amos*  
*W. D. Porter*  
*H. P. McArthur*  
*Marguerite Kennedy*  
*P. Mary Walker*

*B. Morris*

**BECKLEY-CARDY**  
SCIENTIFIC DESIGNERS & MANUFACTURERS

**LABORATORY FURNITURE**

Since 1912 Beckley-Cardy Company has produced scientific equipment in the Laboratory Furniture field. Hundreds of installations are serving satisfactorily throughout the country. Long experience and engineering skill of men whose knowledge has been gained by personal contact with equipment problems enable Beckley-Cardy to serve you to advantage. The suggestions and advice of our engineers and representatives present a close alliance of modern ideas with practical furniture building and craftsmanship. All furniture is designed and built to meet the most exacting requirements. Let us assist with your planning and submit specifications, drawings, and estimates.

**BECKLEY-CARDY COMPANY**  
1636 Indiana Avenue Chicago 16, Illinois

For your working library...

**ARCHITECTURAL GRAPHIC STANDARDS**

By CHARLES GEORGE RAMSEY, A. I. A. and HAROLD REEVE SLEEPER, A. I. A.

Still tops in its field, ARCHITECTURAL GRAPHIC STANDARDS presents in convenient form, for ready reference, the basic information every draftsman, architect or engineer uses in the course of a day's work. This handy volume assembles a vast amount of useful data from many diverse sources. Covers hundreds of important facts, from the size of the grand piano to the thickness of terra-cotta furring. All data, standards, and information are shown graphically, so that pictures tell the story clearly, without text. This book has proved an indispensable time- and effort-saver for every member of the architectural or building professions.

Third edition (1941) 344 Pages, \$6.00

**JOHN WILEY & SONS, Inc. 440 Fourth Ave., New York 16, N. Y.**

**ON APPROVAL COUPON**

JOHN WILEY & SONS, Inc.  
440 Fourth Ave., New York 16, N. Y.

Please send me a copy of Ramsey & Sleeper's ARCHITECTURAL GRAPHIC STANDARDS on ten days' approval. At the end of that time, if I decide to keep the book, I will remit \$6.00 plus postage; otherwise I will return the book postpaid.

Name .....  
Address .....  
City and State .....  
Employed by .....

FA-8-45



## WILLIAM RANDOLPH TALBOTT

**I**N the last issue of the *FEDERAL ARCHITECT*, featuring hospital planning by the Veterans Administration, the Editor expressed appreciation for the assistance given by William Randolph Talbott in reviewing the data prepared for that edition.

Following the above comment it has seemed proper at this time to say a word further about Mr. Talbott who is an outstanding expert on the planning and construction of government hospitals.

A registered architect of the District of Columbia,



he is Chief of the Technical Division of the Veterans Administration, and has supervised the planning and designing of all the Administration facilities for more than twenty years.

Shortly after General Hines became Director of the Veterans Bureau in 1923, Mr. Talbott was made Chief of the Design Sub-Division. He had charge of the architectural planning and designing of Veterans Hospitals and Homes. When the Veterans Bureau was reorganized into the Veterans Administration, Colonel L. H. Tripp, Director of Construction, selected Mr. Talbott for Chief of the newly-organized Technical Division. He thereby became responsible for all architectural, structural and mechanical engineering plans and specifications required for new veterans facilities and the altering of existing facilities. Also, he assumed responsibility for making preliminary studies in connection with the selection of new sites as well as for the inspection and surveys of such sites.

Mr. Talbott was born and reared in Maryland and has always been a resident of that State, living at present in Rockville. His parents were born in Pooles-

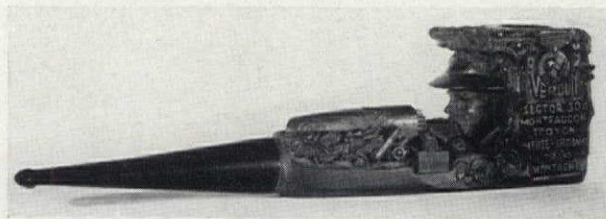
ville, lived in Gaithersburg for a time and later made their home in Rockville, where his father practiced law.

During World War I, he served overseas, having sixty continuous days of front line action during which he participated in engagements at Argonne Forest, Montefaucon, St. Mihiel and Verdun. On Armistice Day, he was on duty in the Romaine Sector. In the present conflict, he relives his World War I experiences through his only son, "Young Bill," who recently was commissioned in the Army Air Corps.

Mr. Talbott has always taken an interest in civic affairs and was closely associated with the Boy Scouts. Since rationing went into effect, he has served on one of the Rockville Rationing Boards.

The physical stamina acquired in World War I battles has lasted through the ensuing years, making it possible for him to set the pace in all building programs undertaken by the Veterans Administration. He plays equally as hard as he works, finding relaxation from his official duties in strenuous tennis.

During the years since World War I, at irregular intervals, he has carved pipe bowls, decorating them with designs usually depicting some serious or amusing incident of the past. The pictures show a few pieces of his handiwork. After study of certain species of wood or selected ivory, he usually has the



Harris & Ewing

rough block of the chosen material cut to a desired shape, after which he undertakes to carve the bowl.

Mr. Talbott is distinguished by gracious, one might say courtly manners, heritage of Maryland forbears. He breaks his official intentness with a friendly smile. Inclined though he is by nature to be modestly retiring, there are few men, nevertheless, in the Government service who by reason of ability and personal attractiveness have built up a longer list of friends.

**To Contractors, Architects, Engineers  
and Industrial Plants:**

**WE SUB-CONTRACT  
TO DO THE  
FOLLOWING WORK**

**C**oncrete floor work; Ce-  
ment Finish; Mono-  
lithic or Top Coat;

Granolithic; Heavy Duty; Colored Cement Floors;  
Ground and Honed Finish; Light Reflecting Floor  
Finish; Non slip Aggregate Finish; Oil and Acid Re-  
sisting Finish; Metallic and Chemical treated Finish;  
Spark Disseminating Finish; Burlap Absorption Pro-  
cess. The nationally known VEN ITE COMPANY (IN-  
CORPORATED IN 1933), 250 S. Broad Street, Phila-  
delphia 2, Pa., Kingsley 1493, are sub-contractors and  
specialists for doing the work and getting the job done  
on time, efficiently, economically and with quality.

More General Contractors, Engineers and Architects  
are using Ven-ite Organization to do the above types  
of work than ever before. No matter how large or small  
the job, get our quotation for the complete installation.  
You will avoid delays and get your job done quicker.  
Try us and you will be convinced. Put our name on your  
mailing list. Write for Specifications. We contract to do  
the above types of concrete floor and cement finish,  
anywhere.

**LAWRENCE DEVENS,**  
*Executive Vice-Pres. & Gen'l Mgr.*

**The "GOLD MEDAL" Line**

**SAFE SCAFFOLDING FOR  
EVERY PURPOSE**



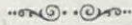
**SAFETY—CONVENIENCE—ECONOMY**

in

**SHIP Construction & Repairs**

**BUILDING Construction & Repairs**

**AIRCRAFT Construction & Maintenance**



**THE PATENT  
SCAFFOLDING CO., INC.**

**38-21 12th St., Long Island City 1  
NEW YORK**

**Tel.: Stillwell 4-4680 & 4-3137**

**Index to Advertisers**

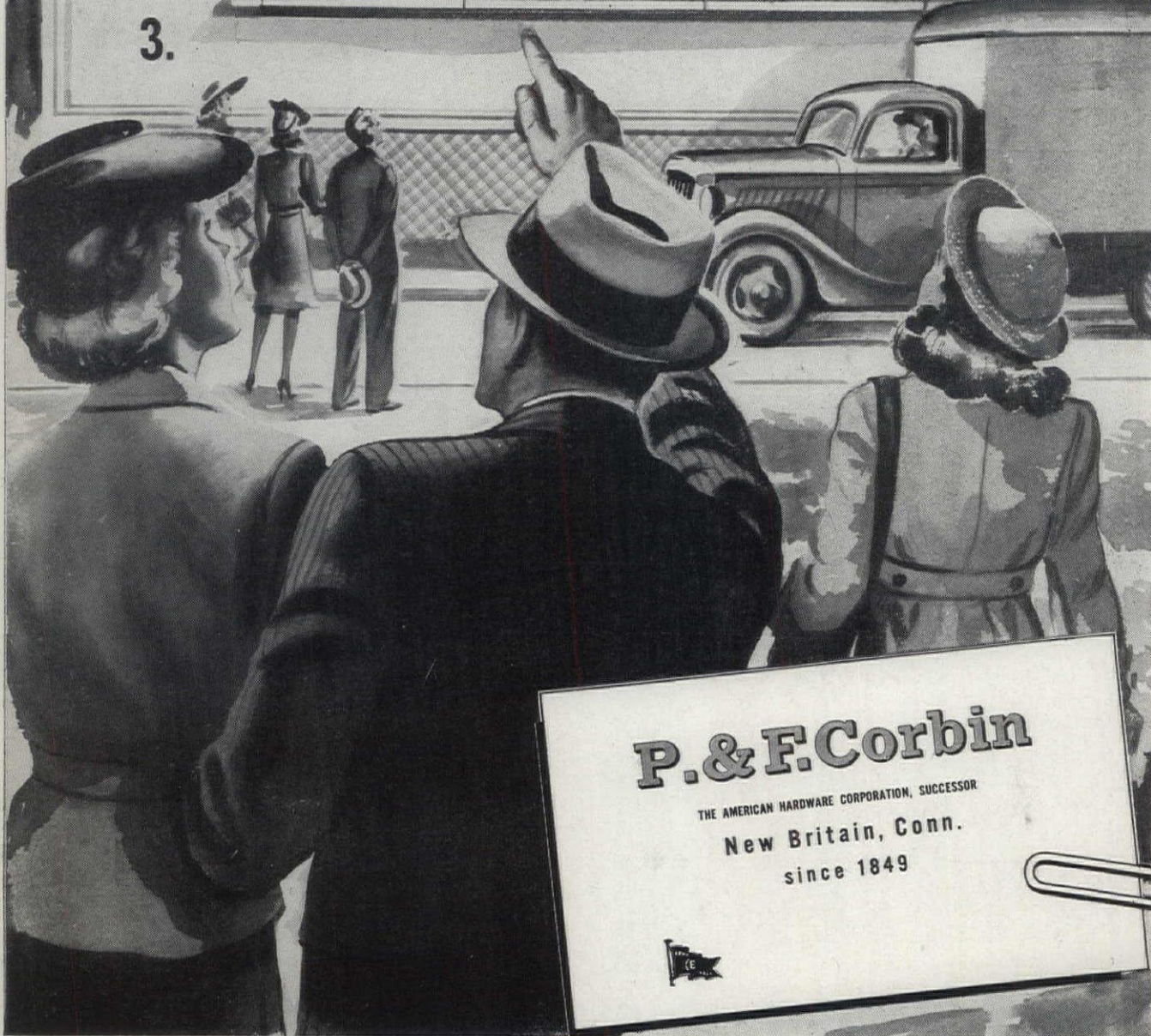
|  |                    |
|--|--------------------|
| Aluminum Company of America . . .                        | Back Cover         |
| American Seating Company . . . . .                       | 1                  |
| Bancroft, Joseph, & Co. . . . .                          | 39                 |
| Beckley-Cardy Company . . . . .                          | 62                 |
| Bell & Howell Company . . . . .                          | 5                  |
| Bilco Mfg. Company . . . . .                             | 46                 |
| Bommer Spring Hinge Co., Inc. . . . .                    | 46                 |
| Carthage Marble Corp. . . . .                            | 18                 |
| P. & F. Corbin Div. American<br>Hardware Corp. . . . .   | Inside Back Cover  |
| Cast Stone Institute . . . . .                           | 18                 |
| Flour City Ornamental Iron Co. . . . .                   | 51                 |
| Formica Insulation Co. . . . .                           | 11                 |
| Fulton Sylphon Co. . . . .                               | Inside Front Cover |
| Marsh Wall Products, Inc. . . . .                        | 4                  |
| Frank A. McBride Co. . . . .                             | 46                 |
| North Carolina Granite Corp. . . . .                     | 56                 |
| Otis Elevator Co. . . . .                                | 14                 |
| Patent Scaffolding Co., Inc. . . . .                     | 64                 |
| Pennsylvania Wire Glass Co. . . . .                      | 39                 |
| S. H. Pomeroy Company, Inc. . . . .                      | 50                 |
| Reynolds Electric Company . . . . .                      | 39                 |
| H. H. Robertson Company . . . . .                        | 12, 13             |
| Savory Equipment Co., Inc. . . . .                       | 15                 |
| Seaporcel Porcelain Metals, Inc. . . . .                 | 39                 |
| Southern Equipment Company . . . . .                     | 6                  |
| Southern States Iron Roofing Co. . . . .                 | 2                  |
| Spray Engineering Company . . . . .                      | 18                 |
| Stran Steel Division, Great Lakes<br>Steel Corp. . . . . | 16                 |
| John Swenson Granite Co. . . . .                         | 56                 |
| United States Bronze Sign Co. . . . .                    | 46                 |
| United States Hoffman Machinery<br>Corp. . . . .         | 7, 8, 9, 10        |
| Ven-Ite Company, Inc. . . . .                            | 64                 |
| Victor Electric Products, Inc. . . . .                   | 3                  |
| John Wiley & Sons, Inc. . . . .                          | 62                 |
| Williams Pivot Sash Co. . . . .                          | 61                 |
| Worth Lumber Co. . . . .                                 | 61                 |
| Youngstown Manufacturing Co. . . . .                     | 23                 |

Good Buildings Deserve Good Hardware



Announcing important developments  
to make selling good hardware easier  
installation simpler... profits larger

- 1.
- 2.
- 3.



**P. & F. Corbin**

THE AMERICAN HARDWARE CORPORATION, SUCCESSOR

New Britain, Conn.

since 1849

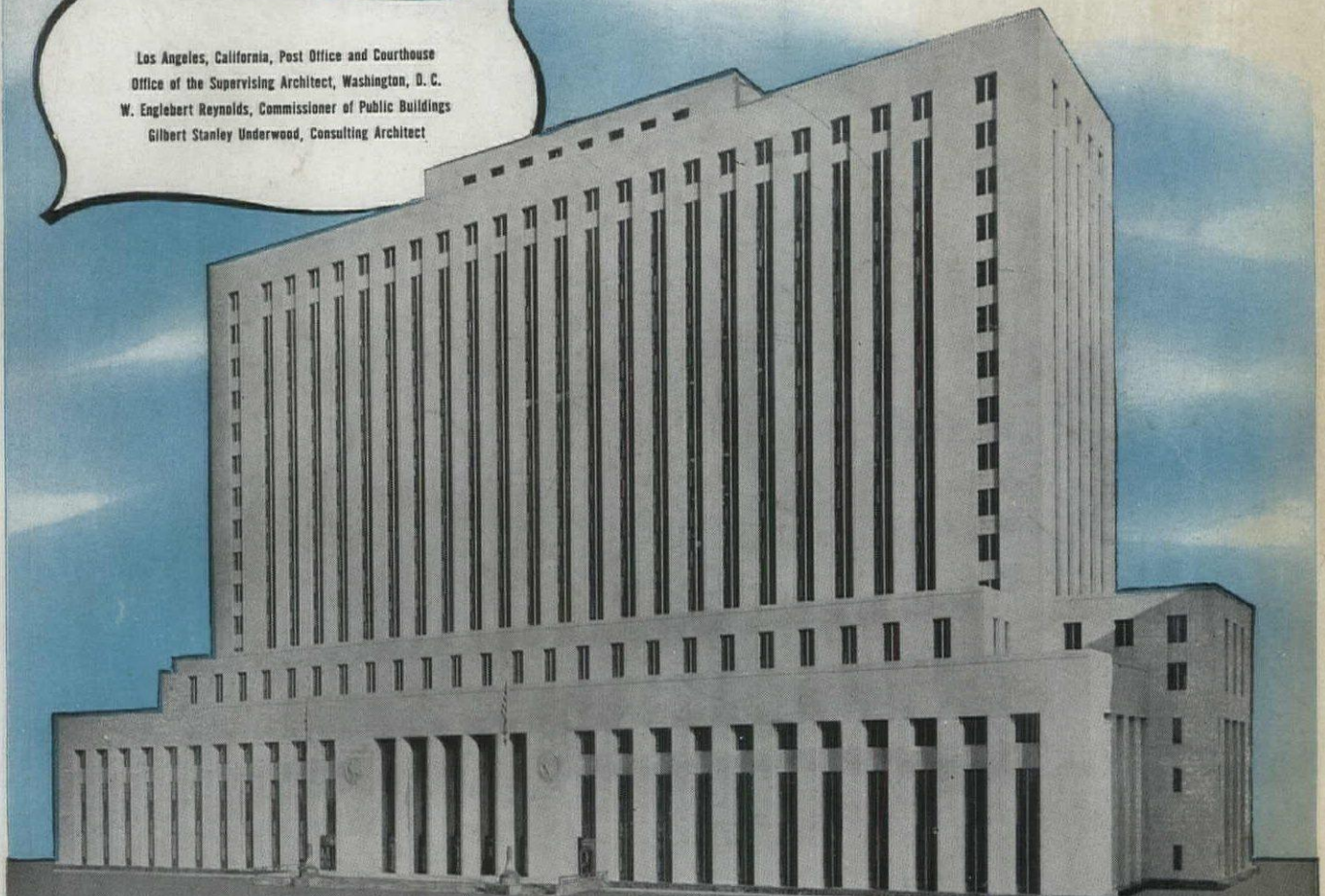


*Designed*

**FOR LASTING BEAUTY**

In this beautiful new post-office and court-house building at Los Angeles, California, Alcoa Aluminum is used in many ways. Spandrels, jamb trim, mullions, interior grilles, doors, decorative grilles, furniture trim, and exposed metal parts of escalators are made of aluminum. Many outstanding buildings in America have used Alcoa Aluminum similarly. Write today for a copy of the booklet, "Let's Look at the Record", showing you how. ALUMINUM COMPANY OF AMERICA, 2147 Gulf Building, Pittsburgh 19, Pa.

Los Angeles, California, Post Office and Courthouse  
Office of the Supervising Architect, Washington, D. C.  
W. Englebert Reynolds, Commissioner of Public Buildings  
Gilbert Stanley Underwood, Consulting Architect



**ALCOA** FIRST IN **ALUMINUM**

REG. T. M.

