

# ARCHITECTURAL RECORD

**PETER ZUMTHOR**

Melds Modernity  
With History

RESIDENTIAL SECTION:  
Houses in the Woods

McGraw\_Hill  
CONSTRUCTION

01

2008

\$9.95

A PUBLICATION OF THE MCGRAW-HILL COMPANIES

[www.architecturalrecord.com](http://www.architecturalrecord.com)



**CEILING** SYSTEMS

[ Between us, ideas become reality. ]<sup>®</sup>



Infusions<sup>®</sup> Accent Canopies, 4' x 10', Channeled Fire



































**We invite you** to explore architecturalrecord.com, which now offers a **new design** and **powerful tools** that allow you to interact with, and contribute to, the site as never before. You can comment on and rate projects, recommend articles, submit photos of your work, and create an industry profile.



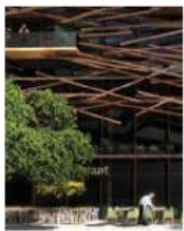
## building types study: performing arts

View slide shows of projects by Bernard Tschumi Architects (Zénith Concert Hall, left), Barton Myers Associates with Architekton, and William Rawn Associates featured in this month's issue. Plus, see additional buildings and slide shows only available online.



## archrecord interviews

Visit our ever-growing archive of multimedia interviews with architectural trendsetters, including Thom Mayne, Alexander Gorlin, and Annabelle Selldorf. Most interviews feature audio and video components. Recent addition: See images from the personal photo album of Bill Lacy (pictured with Lady Bird Johnson, left), former president of the Cooper Union and executive director of the Pritzker Architecture Prize from 1988 to 2005.



## daily news coverage

Read news stories (such as Rudy Ricciotti's design of "T8" in Paris, illustrated at left) posted daily to our Web site, along with exclusive audio segments with architects including David Adjaye. Also, every Friday our news editor features the top stories of the week in a podcast.

### community

#### photo gallery

View more than 2,000 images submitted by readers from all over the world in 10 categories, such as the Computer-Aided Renderings Showcase (above). You can also send us your own photos at [construction.com/community/gallerylist.aspx](http://construction.com/community/gallerylist.aspx).



#### blogs

**Off the Record:** Written by the staff of RECORD and the magazine's team of experienced, award-winning editors, who offer their insightful, informal, opinionated takes on architecture-related trends, conferences, exhibitions, projects, and personalities.

#### forums

**Your voice matters**—and we have provided you with the ideal forum to express your ideas, suggestions, and gripes. Our discussion forums include such topics as Green Building Projects, Virtual Design, Practice Matters, and a forum for younger architects. You can also create your own discussion threads.

#### comments

"I like how they were able to create a wedge between the busy street and the residence. It gives a sense of privacy, and yet it makes a subtle connection with the small openings."

and more ...

### residential: house of the month

View slide shows of stunning residential projects in this Web-exclusive section. This month, we explore a house in Texas by architect Winn Wittman (below). The structure seems about to take flight, yet materials such as iron, steel, granite, and wood keep it grounded to the earth.



### archrecord2

Your childhood shapes your life, and if you become an architect, it can inspire your work. Massachusetts-based architect Theodore Galante (Free Public Library, below) finds it so, as do the students of Travis Price who participate in his Spirit of Place program. See Web-exclusive slide shows of their work.



### continuing education



Visit our vastly improved Continuing Education center, where you can read articles and take tests online to earn credits. This month, we look at a project in Australia (CH2, below) that demonstrates design possibilities for building-integrated HVAC.



Photography (counterclockwise from top right): courtesy Vargas Tejeda Arquitectos; © Peter Mauss/ESTO; courtesy Bill Lacy; Rudy Ricciotti; © Thomas McConnell; courtesy The Galante Architecture Studio; © Dianna Snape



**Acrovyn® faux  
wood and metal,  
new weapons in  
the fight against  
wall abuse.**



The Acrovyn® brand is synonymous with wall protection. Now, thanks to our Chameleon® Faux Wood and Metal Collection, you can have the beautiful look of real wood and metal without the maintenance headaches. And it's available on our most popular profiles. For a free brochure, call 1-888-621-3344 or visit [www.c-sgroup.com](http://www.c-sgroup.com).



**Construction Specialties**

CIRCLE 10 ON READER SERVICE CARD OR GO TO [ARCHRECORD.CONSTRUCTION.COM/PRODUCTS/](http://ARCHRECORD.CONSTRUCTION.COM/PRODUCTS/)

# Learn & Earn

Architectural Record Continuing Education



## Earn

Continuing Education  
credits with  
**Architectural Record!**

Earn your required continuing education Learning Unit hours (LU's) by reading *Architectural Record*.

This issue includes the continuing education article featured on this page. This article will earn you one AIA/CES Learning Unit. Annually, AIA/CES accepts up to eight self-study Learning Units.

Just read the article and complete the short quiz to earn your credit. You can also access this and many other continuing education articles online at [ceu.construction.com](http://ceu.construction.com)

Check out our new online Continuing Education Center at [ceu.construction.com](http://ceu.construction.com)

Page

137-141

### Managing Client Expectations to Reduce Professional Liability Risk

Practice management techniques can lower the risk of client dissatisfaction and professional liability claims

#### Learning Objectives:

- Identify the leading causes of professional liability risk pertaining to client dissatisfaction.
- Determine a client's highest project priority.
- Describe at least three ways to manage risk through external and internal communications.

Provided by



This article will earn you one AIA/CES Learning Unit



## Online Only

### Thin Brick and Thin-Cut Stone Take on Full-Dimension Masonry Products

Slimmer profiles in stone and brick yield cost and logistical advantages

Provided by



This article will earn you one AIA/CES HSW Learning Unit



connecting people\_projects\_products

**McGraw Hill CONSTRUCTION** Architectural Record

[architecturalrecord.com](http://architecturalrecord.com)

The McGraw-Hill Companies











# Letters

## Ready for a change

Thank you for your editorial decision to begin placing sustainability first [December 2007, "Shifts in the architectural climate," page 21]. I look forward to witnessing the evolution of ARCHITECTURAL RECORD and hope to find inspiration in its pages as I continue to adjust my personal design habits and my perceptions of what constitutes good design. Architects have a tremendous opportunity to change the world—I hope our profession chooses the path that will bring positive change. It is no doubt the more difficult path, but architects are great problem-solvers, and I believe we are ready for the challenge.

—Mike Boyle, AIA  
Austin, Texas

## What's the matter at the Stata

So, now the truth is out. Gehry's buildings are not only functionally challenged, flagrantly illogical, and mostly unattractive, but they also leak [December 2007, Record News, "Gehry, Skanska point fingers over MIT lawsuit," page 27]. It will be refreshing when popular demand focuses on rational cleverness and artistic excellence rather than that overblown egotistical trickiness.

—David Wright, AIA  
Grass Valley, Calif.

MIT should share a major responsibility in the Gehry affair: They paid over 300 big ones for a work of art and then they left it out in the rain!

—James A. Gresham, FAIA  
Tucson

How ironic that MIT, acknowledged as among the top architecture and engineering schools in the world, should be having the problems with the new Strata Center. Alas, this is

not the first time. Those with longer memories will recall the failure of Saarinen's Kresge Auditorium and I.M. Pei's Earth Sciences center, both at MIT. RECORD is to be commended on its news report. However, legal settlements always seem to include a nondisclosure clause between the parties. As a result, the profession has no opportunity to learn what really went wrong, and how they might profit from this experience. MIT should take the moral high ground and insist that any resolution include a full report on the alleged building failures.

—William McCullam, AIA  
Newbury, Ohio

## Crediting codified

Robert Ivy's November editorial on attribution ["Beyond legalisms," page 25] acknowledges a chronic issue for architects. The AIA's National Ethics Council has been confronted with numerous requests and more than a few actual cases relating to architect members giving proper credit on projects. In years past, as chair of the NEC, I had been reluctant to codify specific guidelines because of the variety and complexity of media and formats used by the profession. Three years ago, I helped author the NEC adopted guidelines for members to follow when giving appropriate credit. Those guidelines are posted on the AIA Web site and are worth a visit. As Ivy stated, beyond "legal" is "fair"—and fairness is defined by our shared core values and by our professional ethics.

—Phillip H. Gerou, FAIA  
Evergreen, Colo.

I enjoyed Robert Ivy's November editorial on "attribution." It comes to mind that the roles of the public architects involved in public facilities might fit into the group that tends to be "left out." In some cases, how-

ever, these architects may need to be out of the picture when they become a hindrance to quality. Food for thought.

—Mike Fitts  
Chattanooga

## Come to your senses

We don't know whether to call Robert Campbell's Critique [November 2007, "Experiencing architecture with seven senses, not one," page 65] *Eyes Wide Shut* or *Fear and Loathing in Boston, Mass.* Take your pick.

You hired an architect who disses the visual? Are you living in an opposite world? Would you hire a string quartet that tells you, don't judge the quality of our playing by how the music sounds. How about a chef who tells you, taste is not my primary consideration—but bon appetit! No wonder we and our colleagues find your magazine unreadable and only look at the pictures. Oops! There we go again—looking at buildings.

Please let us know when you publish a building by Campbell. We don't actually want to see anything he's designed, but we can't wait for the scratch-and-sniff inserts. And no doubt you will also provide licking samples, a sound track, and stone chips to caress?

—CJ Crawford and Joe Scott  
Boston

Robert Campbell's November Critique is right on. Architectural design as a purely visual experience has been a growing trend for decades, with more and more projects designed solely by computer. One only needs to watch the movie *Blade Runner* to see a prediction of the future coming true with giant interactive billboards surrounded by mega-buildings.

—Edmund G. Garbee III, AIA  
Chattanooga

## Corrections

There were inaccuracies in the November 2007 article, "(Mis)Understanding Green Products" [page 173]. Contrary to the article, NSF International does test and certify products against standards it develops, in addition to other standards. However, it is not the sole certifier of standards it develops. The guide to certifications on page 174 suggests that McDonough Braungart Design Chemistry's Cradle to Cradle program accepts Greenguard air-quality certification as part of its own certification process. The guide should have stated that Cradle to Cradle uses industry criteria that is reasonably similar to that of Greenguard, but does not use that standard. Also, Herman Miller's Mirra chair was not the first furniture product to be certified as meeting the Cradle to Cradle program. However, it was the first product that Herman Miller certified. The first furniture product to be certified was Steelcase's Think chair. Finally, the Greenguard air-quality standard is not ANSI-accredited, or publicly consensus-based, but the Greenguard Institute is an ANSI-accredited standards developer. A December article, "Building Even Better Concrete" [page 143] misspelled the name of Severud Associates principal Andrew Mueller-Lust. The December story on cantilevers [page 156] misidentified architect Frank Barkow, of Barkow Leibinger, as Frank Leibinger. A write-up of the United States Census Bureau Headquarters, a BusinessWeek/ARCHITECTURAL RECORD Award-winner, stated that the building is located in Pensacola, Florida. It is located in Suitland, Maryland.

Send letters to [rivy@mcgraw-hill.com](mailto:rivy@mcgraw-hill.com).



**NUCOR**  
VULCRAFT GROUP

HOW WE  
TAUGHT ONE SCHOOL  
— | A NEW TECHNIQUE IN | —  
PROBLEM SOLVING.

*When you've been in the steel industry for as long as we have, you learn a few things. That knowledge came in handy when the designers of the Tampa Preparatory School needed our help constructing their geodesic dome. By working closely with the architect and structural engineer, we realized the answer would be custom joists that would support both the dome and the budget. So we created ultra-precise arched steel joists and deck that fanned from a center support column. We not only helped a school realize its dream, but we showed young kids that every problem has a solution.*

*It's Our Nature.®*



— | Visit [www.vulcraft.com](http://www.vulcraft.com) | —















































# NEW TOTALFlash Cavity-Wall Drainage System Slashes Labor Costs Improves Protection.

TOTALFlash™ by Mortar Net® USA is a historic breakthrough for controlling moisture-damage and mold-growth in masonry cavity walls. All the "best practices" of today's moisture-control have been ingeniously **factory-assembled** onto handy, pre-cut panels of flexible flashing!

There's no waiting for multiple deliveries, no field-cutting of flashing-rolls, no time spent installing separate components! That's why TOTALFlash™ installs twice as fast as common alternatives, slashing time & labor by 50% (or more)! **And it's available in sizes for easy use in Renovation/Remediation!**

1. All key components arrive **pre-assembled** onto **5-ft. Panels of Pre-Cut Flexible Flashing**.
  2. **Built-In Termination Bar** allows one-man installation.
  3. **Built-In Edge-Dam** sends moisture down to weep system.
  4. **Built-In No-Clog Drainage Matte** for unobstructed drainage to Weep Tabs.
  5. **Built-In No-Clog Weep Tabs** deliver moisture outside the building.
  6. **Built-In Stainless Steel Drip-Edge** releases moisture away from building.
  7. **Clearly Specified Lap-Joints** enforce complete coverage.
- **Screws & Adhesive** included.
  - **Pre-formed Corner Boots, Stainless Steel Corners, & End Dams** available, for quick installation and foolproof corners.



See us at  
World of  
Concrete Show,  
Booth C3413

**TOTALFLASH™**  
CAVITY-WALL DRAINAGE SYSTEM  
by Mortar Net USA, Ltd.

800-664-6638  
www.MortarNet.com



# Why Foster's Hearst Tower is no gherkin

## Critique

By Robert Campbell, FAIA

Now that it has been there for a year and I've had my chance to learn to love it, maybe it's a good time to say why I dislike the Hearst Tower in Manhattan so much.

The Hearst, which of course was designed by Foster + Partners, looks like a misplaced missile silo. It's as if the Pentagon, with its usual deftness of touch, had confused its maps and located this chunk of military hardware in Manhattan instead of Florida.

It's an office building, folks. People work there. But nothing about the Hearst, as seen from outdoors, suggests the possibility of human habitation. It appears to be a cage for a single massive object.

I don't apologize for the image. One of the problems with Modernism, as a stylistic method, is that it tends to ignore the fact that buildings look like other things. And that's how most people understand them. People say the abstract box-like shapes of Modernist office towers look like the cartons the real towers came in. The world we live in is a world of resemblances.

That's why the Brits call Foster's London tower the "the Gherkin." But there's a difference. "Gherkin," which of course means "pickle," is an affectionate name that humanizes the building. I haven't yet heard an affectionate nickname for the Hearst.

Parenthesis: I toured the

*Contributing editor Robert Campbell, FAIA, is the Pulitzer Prize-winning architecture critic of The Boston Globe.*

Gherkin with a Foster partner a few days before it opened. I was charmed by it, despite the fact that much of its architecture is the product of clever solutions to problems that didn't have to occur in the first place, since they were all the result of the building's odd shape. Just to name one: How do you handle the window washing for a pickle-shaped tower? The boom that circles the Gherkin at waist height, and which lifts and lowers the cleaning crews like Gulliver hoisting Lilliputians, is as technically skilled as it is silly and unnecessary. The boom makes the Gherkin into an amusement park ride—resemblances, again.

### More than it needs

Okay, back to Hearst. First of all, the massive exterior truss looks too big and strong to be structuring a tower that's only 40 stories tall. It looks wasteful. I'm not a structural engineer, but I suspect some of the bold trusswork is, in fact, ornamental.

Second, the Hearst is, of course, a new tower planted on top of a six-story Art Deco building from the 1920s. I have never seen an addition to an older building that so completely refused to engage in any kind of conversation with its predecessor. Works of architecture, whatever they do, should not express contempt for the other buildings they must live among. But the Hearst, like a delinquent teen and a grandfather, thumbs its nose at its older companion.

I attended a symposium and dinner at the Hearst a few weeks ago, after having toured it 18



The new Hearst Tower sits on top of a six-story base built in the 1920s.

months earlier, while it was still under construction. I imagined that now that it was finished, at least it would be exciting to be in. Not so. You enter and immediately are confronted with an enormous waterfall with an escalator beside it, the kind

of cliché you'd expect to find at a Hyatt convention hotel. The three-story shell of the old Deco building surrounds you on all sides, but nothing is done to dramatize the experience of yourself as new wine in this old bottle. You're barely aware

## Critique

of the older building.

Unless you have business up in the tower, you don't even get to go up the escalator. A guard stands at its foot and shoos you away. So the one experience that ought to matter—that of rising on the escalator from the old building into the new tower—is denied to the public.

We dined on the uppermost of the 40 floors. Here, where the program changes from office use to eating space, you'd think there'd be an opportunity to articulate that difference in the architecture. But no. We're still in the trusslike cage. In fact, when you look at the tower from outdoors, it appears to be arbitrarily lopped off at this point, as if the owner had run out of money during construction. The truss walls clearly want to be taller. They want a heavier wind load.

Still magical, of course, are the nighttime views from the dining room to Manhattan and its astonishing, seemingly infinite field of light. But that view was my only positive experience.

Trying to figure out my nasty reaction to the Hearst, I remember that, a few years ago, I visited a major exhibition of the work of the Foster office in the British Museum in London. This is the building where Foster created a skylit atrium court around the old circular reading room where Marx researched and wrote *Das Kapital*. (I'm not a fan of the atrium, either, with its deathlike pallor and emptiness, but that's another subject.) The exhibition was impressive. Like him or not, Foster, with his partners and engineers, produces an amazing volume of work—work that is always inventive, carefully detailed, and fully thought through.

I was struck by a wall display of Norman Foster's sketchbooks. The number seems improbable to me now, but my recollection is that the caption informed us that Foster had filled 800 such sketchbooks since he began as an architect. At

any rate, there were an awful lot of them. Some were open. The sketches were not usually of places of any kind. Instead, most were technical. You could see Foster working out a joint detail, for example, or imagining the configuration of a section.

I have no real idea how Foster works. But combining my memory of the sketchbooks with my dislike of the Hearst, it occurs to me that perhaps what Foster does is create prototype buildings—buildings that, when he first imagines them, lack both a program and a site. His entry in the competition for the World Trade Center in New York certainly stuck me that way: a newly invented

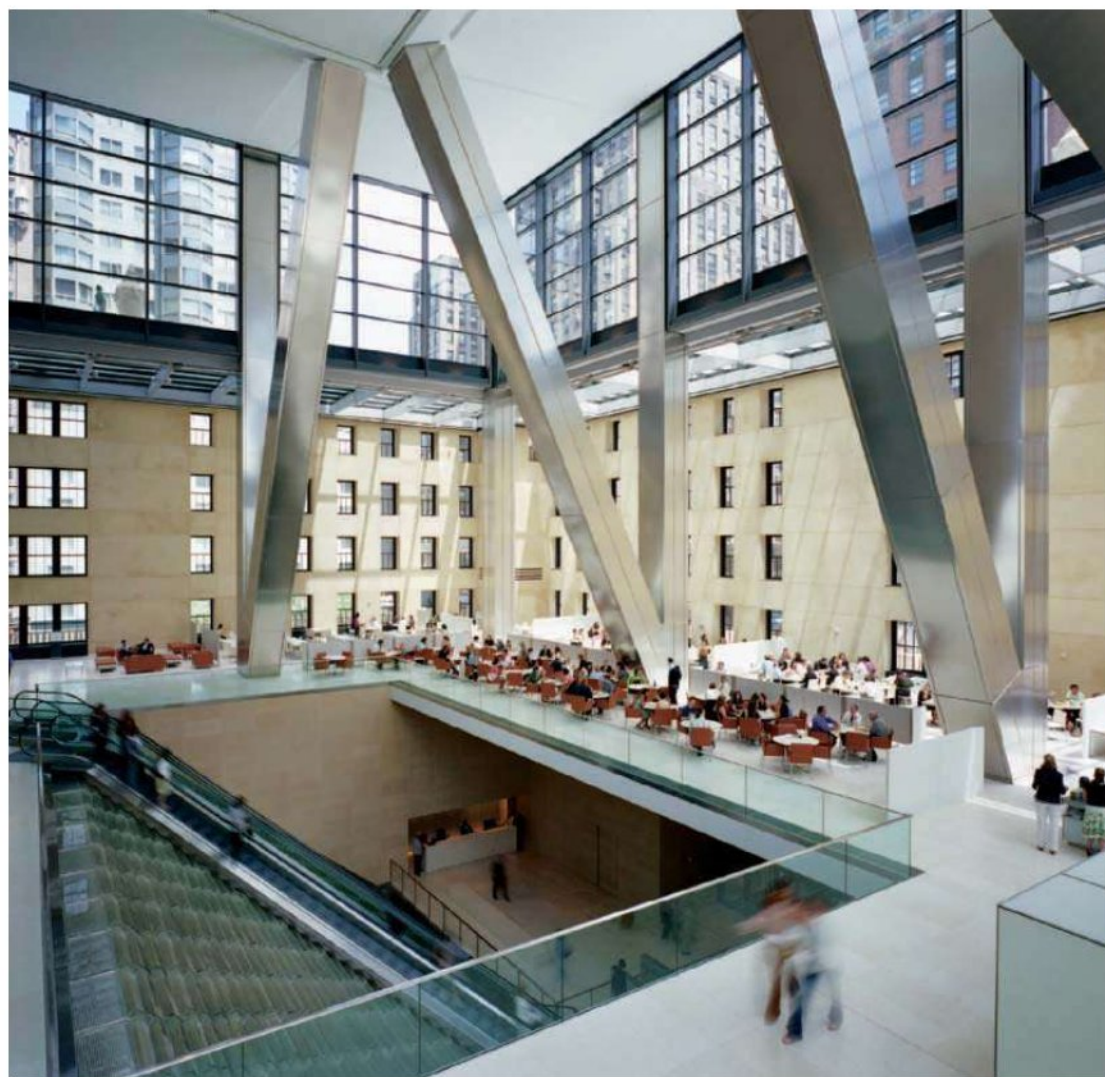
type of high-rise (two towers kissing near the top) that could be built anywhere, whether New York or Singapore, and could contain anything, a hotel or offices or condos or interplanetary rockets.

Whether it's true or not, that's the message the Hearst broadcasts to me: that it's a prototype invented for no particular site or program which was, then, pulled out of its sketchbook and plopped down on this site. Its form not only communicates but insists that it ignores its solar orientation, its site, its Deco footrest, and its internal program of uses. "Put me anywhere, fill me with anything, I'm fine with that," the tower seems to be telling us. It's a throwback to Mies's concept of universal space. And let's remember that Mies's concept, which worked well at Crown Hall in

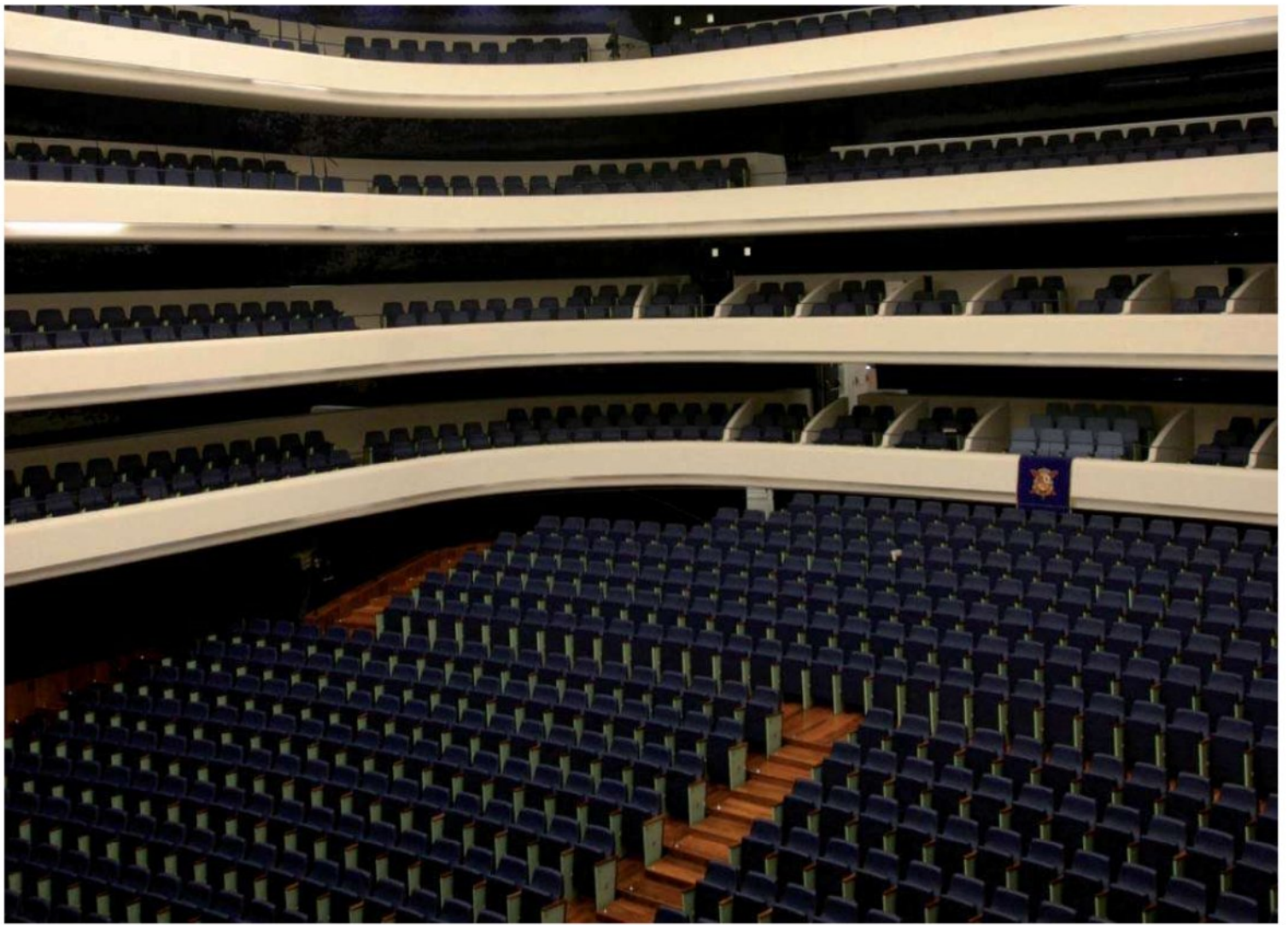
Chicago, created, in Berlin, an art museum that is as hopelessly impractical as it is handsome.

There are, of course, prominent architects and pundits today who believe we live in a single global culture. I'm of the opposite persuasion. I think one of the most important things architecture can do is, precisely, create difference, before the whole planet mixes and matches into the same gray soup everywhere. And the only way to do that is to be very sensitive and responsive to whatever is genuinely different in the site, the culture, the climate, the situation. As I've written in this column before, "Architecture is the art of making places." ■

**ONLINE:** What's a good nickname for the Hearst Tower? [architecturalrecord.com/community/critique](http://architecturalrecord.com/community/critique).



Invitation required: Access to the space carved out of the Deco building is restricted to Hearst employees and guests.



El Palau de Les Arts Reina Sofia, Valencia - Project: Santiago Calatrava  
Model: special custom armchair

Poltrona Frau Contract can provide standard and custom variations  
for auditoriums, theatres, airports, museums, restaurants, hotels and offices

145 Wooster St. New York, NY ph. 212 777 7592 fax 212 777 8481 [www.frauusa.com](http://www.frauusa.com) [frauusa@frauusa.com](mailto:frauusa@frauusa.com)



CIRCLE 28 ON READER SERVICE CARD OR GO TO [ARCHRECORD.CONSTRUCTION.COM/PRODUCTS/](http://ARCHRECORD.CONSTRUCTION.COM/PRODUCTS/)



## Fire Resistance, Aesthetic Design

### Pilkington Pyrostop™ Fire Resistance Glass

#### Product Features:

- 45, 60, 90, and 120 minute configurations available
- Optical clarity of clear glass for high light transmission
- Cat II human impact resistance
- Various security options available
- Passes hose stream test required in North America
- Classified by Underwriters Laboratories Inc.

Find out more. Contact Technical Glass Products (TGP)  
at 800-426-0279 or visit [www.fireglass.com](http://www.fireglass.com) today.

Pilkington Fire Protection Glass North America  
[www.pilkington.com/fire](http://www.pilkington.com/fire)



PILKINGTON

A member of NSG Group



















# style

▶ rubber flooring

When it comes to performance and selection, FLEXCO® rubber flooring is leading the way. Naturally resistant to mold and mildew, FLEXCO rubber floors are designed for durability, versatility and slip resistance, plus they're very quiet and comfortable under foot. Choose from textured, smooth, and environmentally friendly tile, in colors and patterns to match any design or application.

800.633.3151 | [flexcofloors.com](http://flexcofloors.com)

THAT WILL LEAVE YOU FLOORED.



**FLEXCO**®

Innovative design. flooring performance.

CIRCLE 33 ON READER SERVICE CARD OR GO  
TO [ARCHRECORD.CONSTRUCTION.COM/PRODUCTS/](http://ARCHRECORD.CONSTRUCTION.COM/PRODUCTS/)

# Product View



**The Walkstation features a height-adjustable desk and low-speed treadmill.**



## By Jenna M. McKnight

Five years ago, Details, a subsidiary of the office-furniture manufacturer Steelcase, introduced a height-adjustable desk that allows people to stand while they work. Taking the concept a step further, the company recently unveiled the Walkstation, a height-adjustable desk connected to a treadmill.

Office employees can now conduct meetings or peck away on their keyboards while using a specially designed treadmill that tops out at 2 miles per hour. The goal, says Details president Bud Klipa, is not to replace a trip to the gym, but to promote movement in the sedentary office environment, in turn creating a healthier workforce.

The company developed the product in collaboration with the Mayo Clinic's Dr. James Levine, who studies energy expended during routine daily activities. The curved desk comes in five different sizes, with a height-adjustment range of 24 $\frac{1}{2}$ " to 52". Priced at about \$4,000, it is only available commercially. The treadmill plugs in to a standard 110-volt outlet and features a noise-reducing belt, a high-torque motor designed for low speeds over long durations, a safety key, and a console that displays pace, time, distance, and calories burned. Klipa says first-time users are often surprised they can work while walking. "People tend to look at it and scratch their heads at first," he says. "There really isn't anything else like it on the market." Details, A Steelcase Company, Grand Rapids, Mich. [www.details-worktools.com](http://www.details-worktools.com) **CIRCLE 200**

## Office desk takes multitasking to the extreme

For more information, circle item numbers on Reader Service Card or go to [architecturalrecord.com/products/](http://architecturalrecord.com/products/).



# QUALITY FOR GENERATIONS

## QUALITY STONE VENEER

1.800.795.3229

QualityStoneVeneer.com

















# Compact Laminate Rain Screen Panels



Over 50 solid colors, woodgrain, oxidations, and metal patterns from which to choose. Plus, full custom digital capabilities to create exterior panels in any visual you desire.

*Concealed and exposed fastening systems.*

Miami Dade county hurricane test compliant  
International Building code compliant  
MEA fire tested

**A LEED contributing product**



Arpa  
USA 

[www.arpausa.com](http://www.arpausa.com) [info@arpausa.com](mailto:info@arpausa.com) 1-877-277-2669

CIRCLE 37 ON READER SERVICE CARD OR GO TO [ARCHRECORD.CONSTRUCTION.COM/PRODUCTS/](http://ARCHRECORD.CONSTRUCTION.COM/PRODUCTS/)



For five decades, Bill Lacy has worked the halls of power, as architecture dean, arts administrator, college president, adviser to major corporations, and Pritzker Prize jury director. In the process, he has connected architects to people with names like Clinton, Rothschild, Getty, and Paley

# **Power Player:** The Many Lives of Bill Lacy

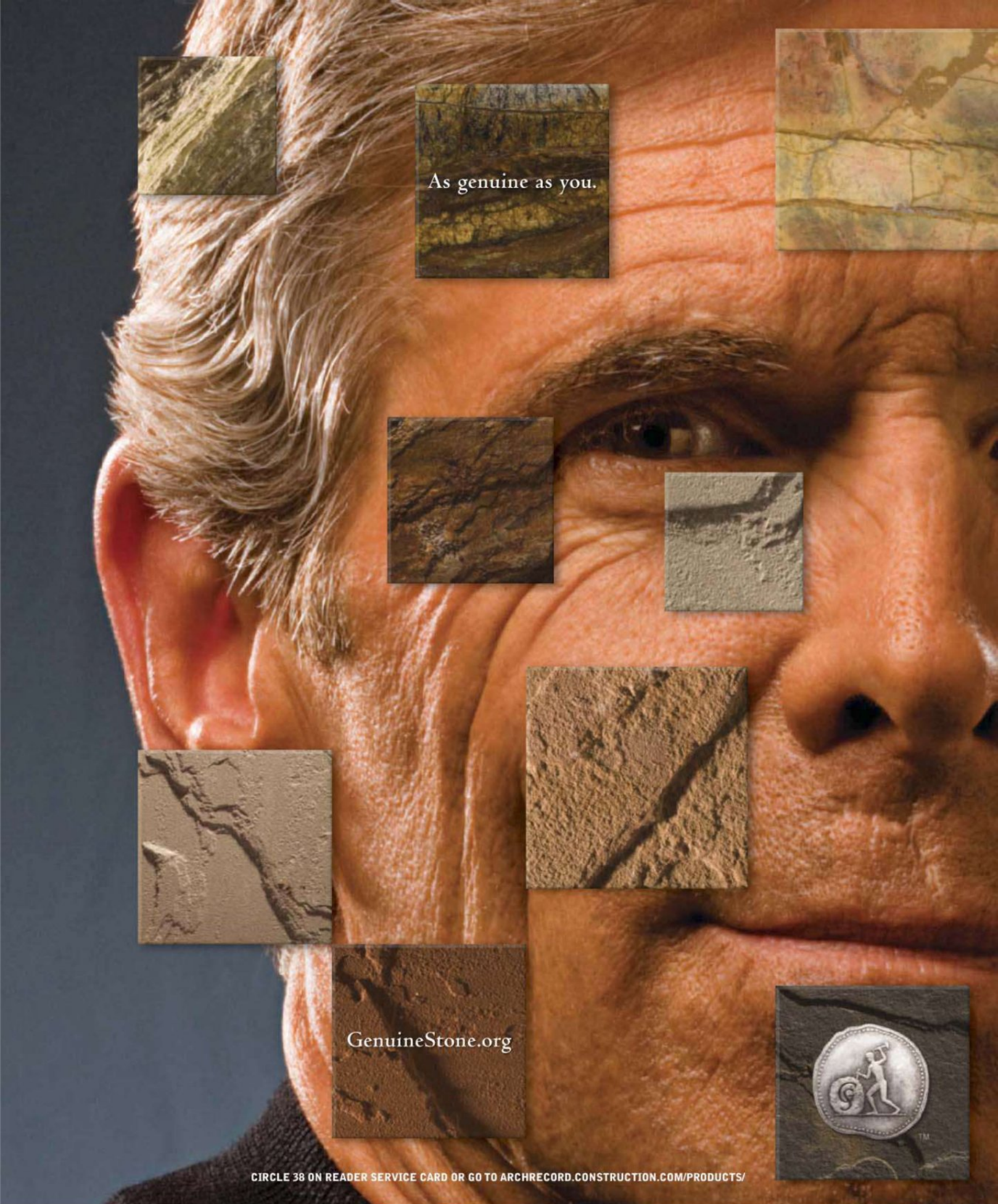










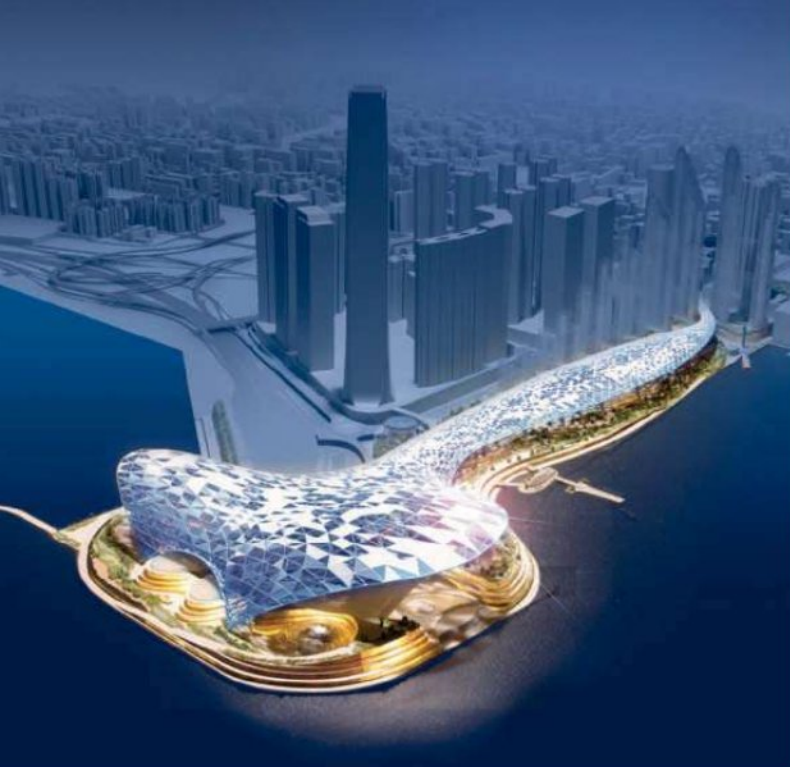


As genuine as you.

GenuineStone.org



CIRCLE 38 ON READER SERVICE CARD OR GO TO [ARCHRECORD.CONSTRUCTION.COM/PRODUCTS/](http://ARCHRECORD.CONSTRUCTION.COM/PRODUCTS/)



Foster + Partners won a competition that Lacy helped organize for a large cultural center in West Kowloon, Hong Kong (left and below). The project is not going forward as designed.



[president of CBS] and helped him select an architect for the Museum of Television and Radio [the Philip Johnson–designed project that Paley helped fund.] Then Jacob [Lord Rothschild] asked me to run the competition for the Israeli Supreme Court. So, I kind of eased into it.

**AR:** *I see. It sort of grew.*

**BL:** Yeah. We didn't sit down one day and say, architecture needs a consulting process, but it became like an executive search company that makes sure a client gets an architect that's right for the job and has the credentials checked out.

And it grew as I ran the Pritzker jury. If you review as many applications and see as many buildings and architects as I did, you accumulate a lot of knowledge. You learn to sense if a particular architect would be a good fit for any number of reasons.

**AR:** *What project stands out from your consulting work?*

**BL:** The Getty. I felt good that they wanted me to do the Villa as well as Meier's museum. When I was president of the American Academy in Rome, I got a call from the Getty's Nancy Englander, whom I'd known at the Endowment. She asked for advice on selecting a site. So I called Paul Friedberg [the landscape architect], and we went to L.A. and gave the pros and cons of three different sites.



Renzo Piano talks with Lacy about his design for the Kimbell (above). Pritzker jurors in 2000 (right, from left): The late J. Carter Brown, Lacy, Carlos Jimenez, and Jorge Silvetti stand in front of Ricardo Legorreta's cathedral in Managua, Nicaragua.



**AR:** *What other projects stick out in your mind?*

**BL:** The U.S. Courthouse in Boston [designed by Henry N. Cobb, FAIA, of Pei Cobb Freed], which Judge Stephen Breyer [now U.S. Supreme Court Associate Justice] helped shape. We took the ball from the GSA and ran with it. At an early meeting with the GSA, someone pointed to me and asked Breyer, "What's he doing here?" Breyer said, "He's my clerk."

There was also the West Kowloon cultural center, a massive cultural hub in Hong Kong. I served as professional adviser for an international design competition for the site. Norman [Lord Foster] won it with a huge shed roof. It was like Bucky Fuller's dome over New York, except Norman's was a little more free form. [The project ran into political problems and has not moved forward.]

**AR:** *Working for the Kimbell on its current expansion, did you have any trepidation dealing with such an iconic building?*

**BL:** No, I didn't. It's interesting how it happened. I suggested my usual format for getting the right architect. But they were really set on having Renzo [Piano]. And I thought and thought but couldn't think of anyone better. Not just because

Renzo's at a plateau in his career, but I think that he has the sensitivity and ability to sublimate his ego and pay homage to Lou and the existing Kimbell. And he has the personality to get along with the clients. The Kimbell is going to keep me gainfully occupied for years.

# Today, USC engineering takes the next step in shaping tomorrow's megacities.



**Presenting the Sonny Astani Department Of Civil And Environmental Engineering.** Endowed with the largest naming gift for a civil engineering department, it is poised to meet the challenges of megacities and those who live in them.

#### **Sonny Astani:**

- Builder in Los Angeles for 25 years and the largest real estate developer in downtown.
- Philanthropist supporting facilities for the homeless.
- USC Alumnus with an MS ('78) in Industrial and Systems Engineering.
- Recipient of the Mark A. Stevens Distinguished Alumni Award from the USC Viterbi School.

#### **USC Viterbi School of Engineering:**

- Consistently ranks in the top 10 on the *U.S. News & World Report's* list of graduate engineering programs.
- Home of the Information Sciences Institute, one of the incubators of the Internet.
- One of only four engineering schools to have two currently active National Science Foundation Engineering Research Centers.
- Awarded the First Department of Homeland Security Center of Excellence (CREATE) and a Transportation Center from the U.S. Department of Transportation (METTRANS).
- Faculty includes 28 members of the National Academy of Engineering, four winners of the Shannon Award, one Turing Prize winner and more than 40 recipients of national junior faculty career awards.
- Home of the Distance Education Network, the nation's leading graduate engineering e-learning program.



Less traffic. More space. Cleaner air and water. A greener environment.

These are just some of society's fundamental needs addressed daily by civil and environmental engineers. Now, with the creation of the

Sonny Astani Department of Civil and Environmental Engineering, we

strengthen our resolve to make the world a better place to live today, and tomorrow.

Sonny Astani's commitment to harmonious development, and his pivotal role in the

ongoing downtown Los Angeles renaissance is precisely the kind of thinking megacities

will need in the coming years. And precisely the kind USC is committed to providing.

<http://viterbi.usc.edu>

**CIRCLE 39 ON READER SERVICE CARD OR GO  
TO ARCHRECORD.CONSTRUCTION.COM/PRODUCTS/**

**USC Viterbi**  
School of Engineering





The pharmaceutical giant Novartis hired Lacy to advise it on the architecture of its campus in Basel, Switzerland, and the master plan for a headquarters in the U.S. SANAA designed one of the Basel projects (left and above).

**AR:** *I know you have some reservations about competitions.*

**BL:** I have run many competitions, and when I was at the Endowment, I promoted competitions to encourage younger architects. However, the jury or selection committee selects a design, but they get an architect. Too many times the design changes and they still have the architect. The committee might prefer to go look at work and have a show of credentials. I think that you cannot rely on imagery to replace the actual experience. It's like going to the theater. You have to be there.

I'm consulting for Novartis now. When I first met with the C.E.O., I told him I don't believe in competitions except for special projects, like monuments and memorials. He surprised me by agreeing, because, he said, he lost control when he brought in a jury. He couldn't overrule them. He told me to give him three names, and he'd visit each one. We now have Gehry, Chipperfield, Moneo, Siza and Suto de Moro, Sejima, and others working for Novartis in Basel. And we're doing a master plan for a U.S. headquarters.

**AR:** *From your experience as a consultant, do you have advice for architects seeking a commission?*

**BL:** Interviews are the make-or-break thing. You have to understand what the client wants. Forget about everything but the client's project. Clients don't take the same keen interest in what you've done as in what you're going to do for them. I've seen architects fail by being arrogant. The top architects are generally excited about the possibilities of what a project can be and how they can do it. It's that intensity



about the client's project that's more important than almost anything else.

**AR:** *Is there a thread that unites all parts of your varied career?*

**BL:** One of the major things I hoped to do at Tennessee, the American Academy, Cooper, and Purchase was to improve morale and image. Cooper had gone to sleep. It was in the doldrums. The Academy—when I was there—had to deal with people asking, "Why Rome?" They thought it was passé, not interesting. So I did the first New York exhibition of fellows' art since 1898. I had a first-ever Academy concert. I tried to enliven the place and modernize its programs. I changed the direction by bringing Robert Motherwell onto the board. At Purchase, I brought in Pentagram. At these institutions, I wanted to make people feel proud again of the place. I thought if you told the truth about the place, it would be a big plus.

**As dean of the school of architecture at the University of Tennessee, Lacy introduced Buckminster Fuller (left) at a talk around 1967.**

**AR:** *What qualities do you think you have that qualified you for one uber-architecture position after another?*

**BL:** Part of it was having ideas, the vision thing. I had the benefit of lots of different kinds of experience, from being in the military and handling a lot of men in Germany, going to Rice and teaching, starting several firms and getting to know a great many, many people along the way. Also, I have the ability to meet people and put them at ease, and I have a sense of humor. ■



## BEAUTY IS A LOK.

Who says there are no sure things in design? From coast to coast, in residential and commercial applications, the natural looks and rich colors of VERSA-LOK retaining walls are admired and desired. As are the freestanding walls, columns, steps, curves and corners that they make so simple to install. With VERSA-LOK, you have the freedom to create virtually any hardscape imaginable—without using special units. And the results are always the most coveted in town. Beautiful, simple and reliable. That's the VERSA-LOK promise.

To find out why design professionals prefer VERSA-LOK, call (800) 770-4525 or visit [www.versa-lok.com](http://www.versa-lok.com).



Freestanding  
Walls



Mosaic Random  
Face Patterns



Fully Integrated  
Stairs



Random-Pattern  
Tall Walls



Freestanding  
Columns



Multi-Angle  
Corners

**VERSA-LOK**<sup>®</sup>  
Retaining Wall Systems  
*Solid Solutions*<sup>™</sup>

© 2008 Kiltie Corporation • Oakdale, MN

CIRCLE 40 ON READER SERVICE CARD OR GO TO [ARCHRECORD.CONSTRUCTION.COM/PRODUCTS/](http://ARCHRECORD.CONSTRUCTION.COM/PRODUCTS/)



At its northeast corner, the museum opens onto a courtyard that used to be the cemetery belonging to the church of St. Kolumba, destroyed by bombing during World War II.



# Peter Zumthor fuses a historical palimpsest with Modernism at KOLUMBA, ART MUSEUM OF THE ARCHDIOCESE OF COLOGNE, lending the space a new kind of spiritual overtone

By Bettina Carrington

**P**eter Zumthor's Kolumba in Cologne is a different kind of museum. Inspirational rather than art historical, its juxtapositions of old and new religious art are meant to stimulate thinking about how different periods have addressed sacred themes. For this "museum of reflection," as the curators describe it—an institution from which all of today's usual entertainment factors, including a café and gift shop, are excluded—the reclusive Swiss architect known for his contemplative spaces has given new spiritual overtones to an architectural palimpsest.

The Kolumba, founded in 1853 by the Society for Christian Art, maintains a collection of religious art that extends from a 1st-century portrait of the daughter-in-law of Emperor Tiberius to the present. In the words of curator Stefan Kraus, "The museum encompasses 2,000 years of architecture for 2,000 years of art." The institution had suffered financial uncertainty until 1989, when it came under the jurisdiction of the Cologne Archdiocese. Within a decade, the new administration oversaw the competition for a new building to replace the 4,300-square-foot space it had occupied previously. Zumthor won with a design that uses the remaining walls and irregular polygon ground plan of the ruined Gothic church of St. Kolumba on the site. The building's 17,222 square feet of exhibition space, costing \$64.5 million, constitute almost the entire structure.

The St. Kolumba church has a twofold history, both parts of which are integral to the new building. In a neighborhood otherwise flattened during the Second World War, the survival of a late-Gothic figure of Mary on a choir pier was considered so miraculous that the Parish church commissioned a chapel especially for it from Gottfried Böhm, whose free-standing octagonal volume sits within the church's footprint (the "Madonna of the Ruins" chapel dates to 1950, a sacrament chapel to 1957). Then, in 1973, the discovery of an important archaeological site beneath the old church revealed Roman and Gothic as well as Medieval remains.

In order to preserve access to the ancient ruins, Zumthor carefully positioned within them tall, slender steel columns sheathed in concrete, lifting the main part of the museum nearly 40 feet high. Taking his cue from the cement block walls of Böhm's sacrament chapel, he used open brickwork for the new walls—in which a structural grid of columns is embedded—placing them on the remnants of the Gothic church's walls. The large scale and subdued light of this space create a meditative, cathe-

*Bettina Carrington is an independent scholar who frequently writes about the architecture and design of museums.*



An entry at the southwest corner (left) provides access to Gottfried Böhm's "Madonna of the Ruins" chapel, now contained within the museum building. The main entry is farther north along the west elevation. Gallery windows on the north side face the city (below).



**Project:** Kolumba, Art Museum of the Archdiocese of Cologne, Germany

**Architect:** Atelier Zumthor—Peter Zumthor, Rainer Weitschies

**Associate architect:** Wolfram Stein

**Engineers:** Jürg Buchli, Ottmar Schwab (structural); Gerhard Kahlert (HVAC, geothermal); Hilger (e/p)

**Sources**

**Ceramic brick:** Petersen Ziegel

**Lighting:** Zumtobel

**Alarms:** Bosch

**Elevators:** Schmidt



The sacristy of the church of St. Kolumba, at the building's south-east corner (above), is now open to the sky. An alley abuts the courtyard at the museum's northeast corner (right). The foyer opens onto the courtyard, archaeological ruins, and, via a narrow stair, gallery levels (below right).



dral-like effect that sets the mood for other exhibition rooms.

The sensuous pale beige material of the exterior and lobby of the new museum is enigmatic. What appears initially to be delicate ceramic tile work are in fact unusually long, thin bricks, each measuring 21¼ inches long and 1⅞ inches high. To ensure a color, format, and bond that would be compatible with the materials of the older buildings on the site, Zumthor commissioned new bricks that were painstakingly handmade over a two-year period in Denmark. Kolumba's blocky volumes depend for their impact on the contrasting textures of these facades—the new brick walls with their areas of arresting openwork, the stone and brick of the Gothic remains, and the glass and steel of an entrance or window.

A modest doorway opens to a tall, narrow space within a new rectangular wing that extends along Kolumbastrasse from the Böhm sacrament chapel. A labyrinthine series of 90-degree turns helps visitors make the transition from the busy street to the calm of a bright, airy foyer overlooking a peaceful, tree-filled courtyard that used to be a cemetery. In addition to vertical circulation, this rectangular volume contains offices, a library, and two levels of exhibition space that, on the second level, flows into the galleries above the former church site. Throughout this second level, and on all levels of the new wing, water-filled pipes use a geothermal source for unconventional heating and cooling that radiates from the floors and two-layered walls.

A small brochure distributed at the museum's entrance identifies artworks—there are no wall labels or acoustiguide—and encourages visitors to take the time needed to satisfy their intellectual curiosity. Without

a prescribed path through the museum, one begins, logically, with the majestic space of the archaeological site adjoining the lobby.

Shadowy daylight penetrating the open brickwork of this lofty space is supplemented by judiciously placed overhead fixtures that spotlight the excavations. The ethereal effect is one of a wide variety stemming from different combinations of natural and artificial illumination in all parts of the building. An audio installation by Bill Fontana based on the cooing of pigeons, like those that lived in the ruins, contributes to the serenity. A Padukwood walkway zigzags over the ruins, past the stained glass and concrete exterior of the Böhm chapel to the former sacristy, now open to the sky and containing Richard Serra's sculpture *The Drowned and the Saved*. The walkway's dark red color, which will presumably fade, is a single dissonant note.

Returning to the circulation wing, a tall narrow stair rises to five























































# PROFILE:

## Architect **Sir Nicholas Grimshaw**

By **Robert Ivy FAIA**

SINCE THE INAUGURATION OF THE HEROIC WATERLOO TRAIN TERMINAL IN CENTRAL LONDON IN 1993, ARCHITECT SIR NICHOLAS GRIMSHAW has achieved a far-flung, distinctive body of work. While constantly concerned about the environment in each project, he also draws inspiration for whole

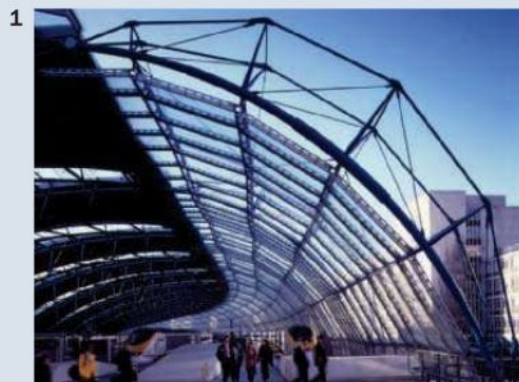
projects and small details from engineering, geometry, and even organic/biomorphic structures. Grimshaw Architects, the 150-person organization he founded in 1980, following a 15-year partnership with Terry Farrell, now functions from three primary locations: London, New York, and Melbourne.

In 2002, Grimshaw stood for the presidency of the august Royal Academy, an institution he has subsequently liberated from the financial doldrums to its rightful position of admiration and respect. Sir Grimshaw recently sat down with RECORD editor in chief Robert Ivy for a leisurely conversation on architecture, energy-conscious design, and the relationship of architecture and the arts. His remarks are summarized below.

**On Green Architecture** He has been talking and writing about the subject since 1979, when he wrote an article for the *RIBA Journal* entitled "Energetic Architecture—A Belief." If everybody took the fuel used to drive to work and walked instead, he argues, it would pay to heat the office building. "Modern Industry isn't antisocial and polluting. Light industry sits comfortably in residential areas," he observes. "If more people lived within 2 miles of work, they could easily walk. However, most people won't accept it as concept. But working from home, going in twice a week, would help. It would save huge amounts of time."

**Theoretical Projects** "I find theoretical, environmental projects fascinating. In 2003, we designed a tidal scheme [North Wales Tidal Energy Project] off the coast of Wales, where there is a 24-foot tidal drop. You let the water in, hold it, and let it out through turbines." Offshore Tidal Impoundment (OTI) is a new approach to renewable power generation. It exploits the low-head turbine technology of tidal barrages while avoiding their adverse environmental and navigational problems. OTI structures are designed to be self-contained, located on the coastal

Sir Nicholas Grimshaw's design approach is informed by three elements: structure, space, and skin.



The Waterloo Terminal in central London (1993) is a multifaceted transport interchange, serving 15 million rail passengers per year (1). Grimshaw's expansion of the Queens Museum of Art in New York will double its size (2). The Eden Project in Cornwall (2001) is the largest plant enclosure in the world, built in the most ecological way possible (3). The glazed elevations of the Rolls-









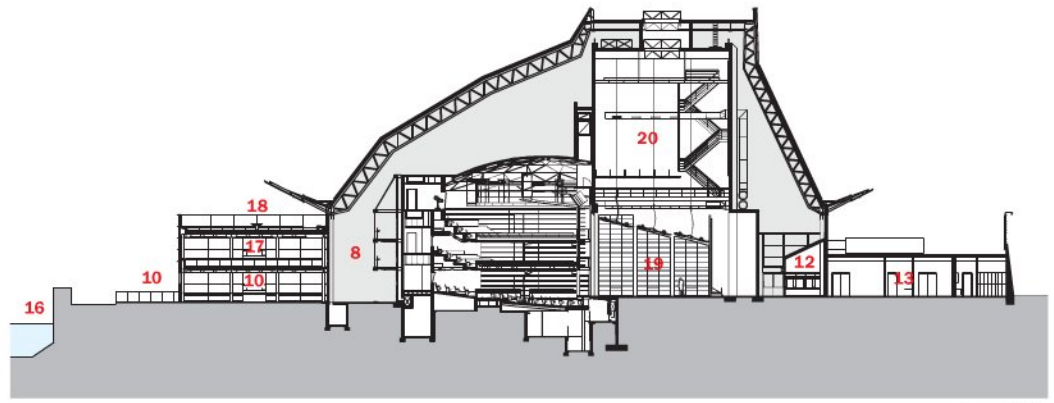
Topped by a 16-pitch roof that takes its cue from the landscape, the arts center (opposite) rises dramatically from the southern edge of a lake. On the eastern side, where a path from a park leads to the

lobby, the angular shed roof overhangs the concrete and copper-banded wall (below). An architectural sculpture in the lobby extends to an outdoor terrace surrounded by a negative-edge reflecting pool (bottom).



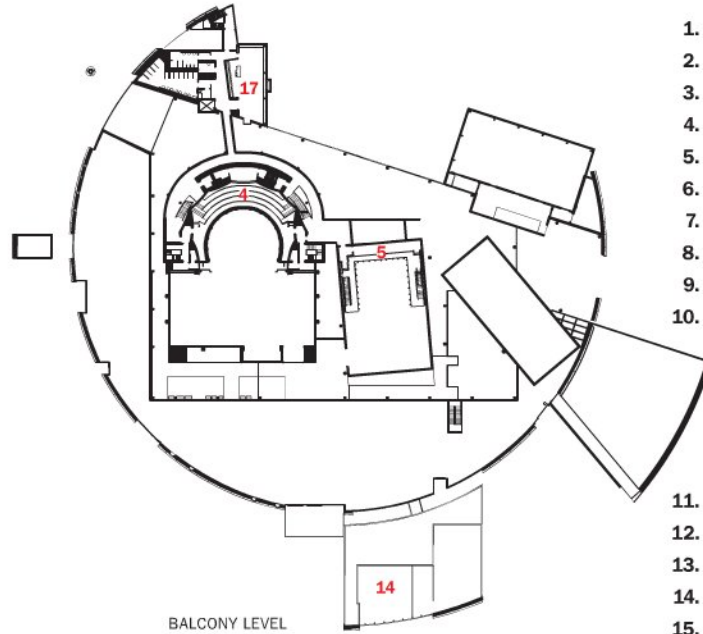


A protruding glass wall on the building's eastern side (below) separates a 5,000-square-foot outdoor sculpture garden from the reflecting pool. Looking west (bottom), water meets glass in this exterior view of the 3,700-square-foot multipurpose room.



SECTION A-A

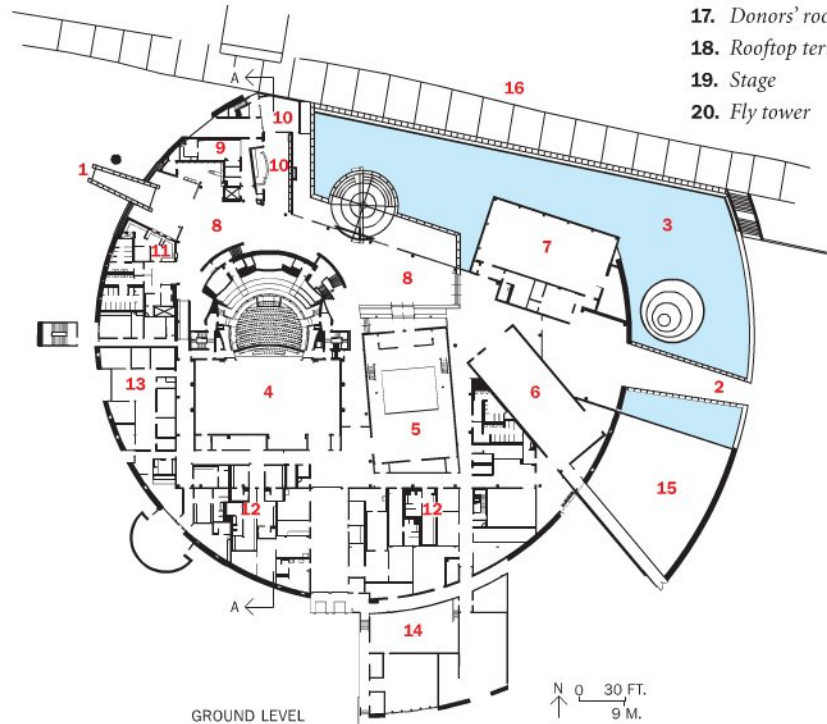
0 20 FT.  
6 M.



BALCONY LEVEL

1. Main entrance
2. Park entrance
3. Reflecting pool
4. 600-seat theater
5. 200-seat theater
6. Art gallery
7. Multipurpose room
8. Lobby
9. Gift shop
10. Bar/outdoor café

11. Box office
12. Dressing rooms
13. Offices
14. Mechanical
15. Outdoor sculpture garden
16. Tempe Town Lake
17. Donors' room
18. Rooftop terrace
19. Stage
20. Fly tower



GROUND LEVEL

N 0 30 FT.  
9 M.



















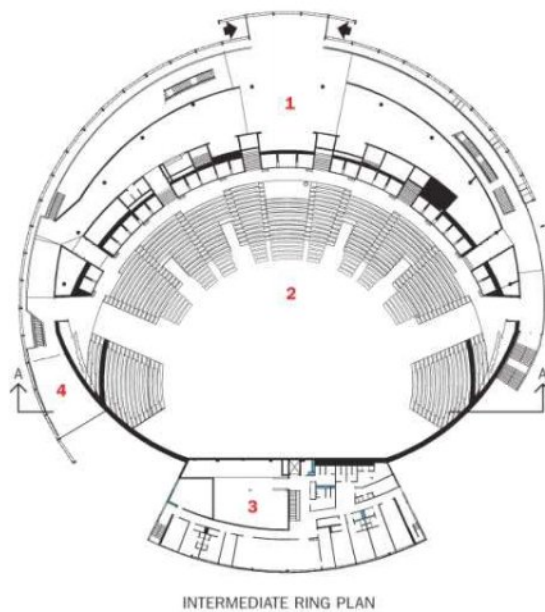
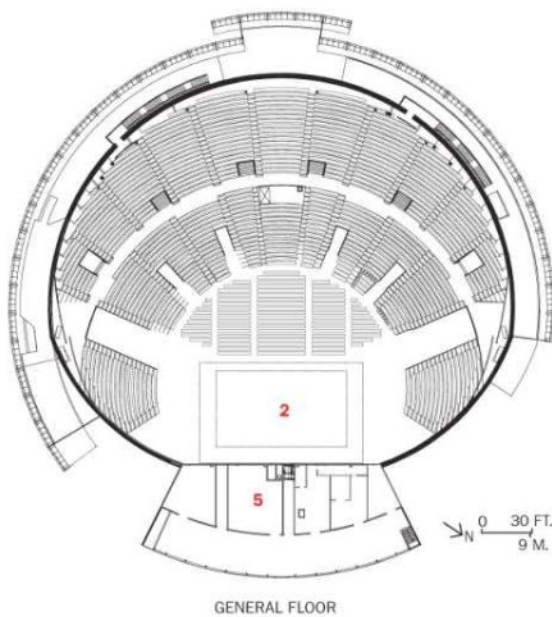
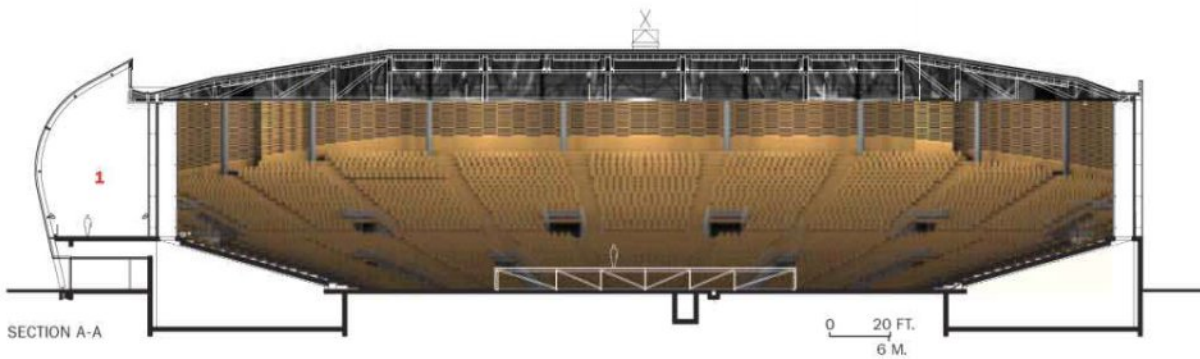




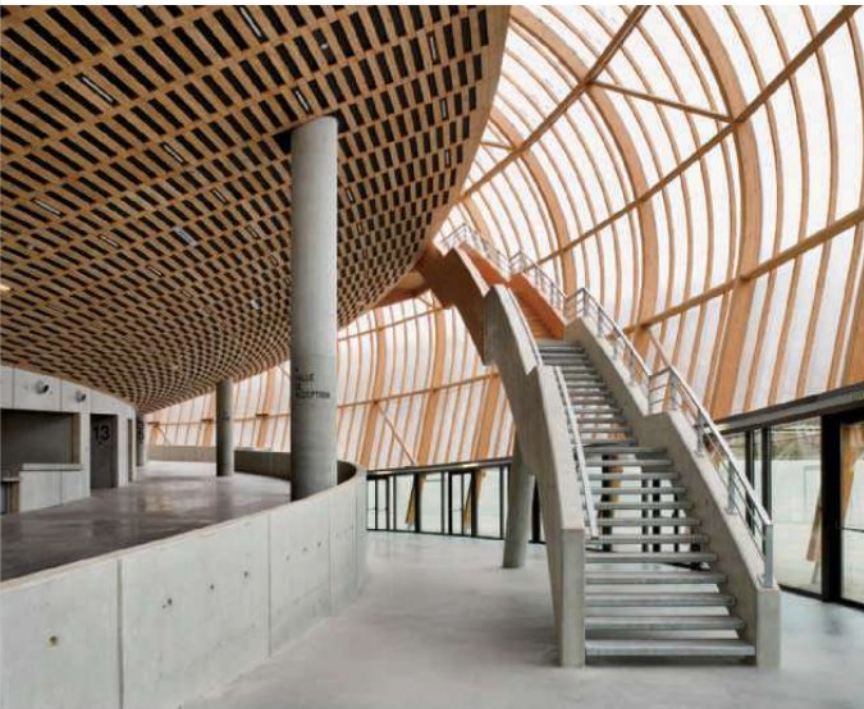




The building rises slightly off the ground (above) to a height of 72 feet on the 15-acre site. Parking for 1,500 occupies 7 acres of land, planted with trees.



1. Lobby
2. Auditorium
3. Backstage
4. VIP room
5. Technical rooms



The client particularly wanted to use wood associated with its forest location and the presence of the timber industry in the region. In addition, wood would introduce a certain warmth into the building, which includes a flexible hall intended to accommodate between 600 and 8,000 spectators.

### **Solution**

Inserted into a natural slope, the concert hall sits at the end of a 1,500-car, 7-acre parking lot that resembles nothing so much as a green field planted with 300 young trees. Working with the noted garden designer Michel Desvignes, Tschumi used a layered gravel-and-earth system based on volcanic stone from the nearby Puy-de-Dôme region, which assures the necessary stability for parking while allowing grass to grow.

The slight slope of the site gives the impression that the hall itself is rising gently off the ground, as well as making it easier to create ramps inside that are accessible to the disabled. To reduce solar gain, an alveolar-polycarbonate skin, chosen in part for its excellent insulation qualities, was silk-screened with an abstract, pixelated pattern on the upper curve of the envelope. This material also reflects exterior lights

**The circulation space between the outer and inner envelopes contains open-riser stairs to the upper levels (above left). The inner envelope (right), an acoustic wood trestle, encloses the auditorium (above right), which comes equipped with 4,500 wood seats stained different colors. The hall can accommodate a total of 8,000 spectators, seated and standing, as needed.**





























**Program title: "Architecture, Hot and Cold," Architectural Record (01/08, page 127).**

018EDIT1

AIA/CE Credit: This article will earn you one AIA/CE LU hour of health, safety, and welfare credit. (Valid for credit through January 2009.)

Directions: elect one answer for each question in the exam and completely circle appropriate letter. A minimum score of 80% is required to earn credit. Take this test online at <http://archrecord.construction.com/continuing/default.asp>.

- |      |   |   |   |       |   |   |   |
|------|---|---|---|-------|---|---|---|
| 1. a | b | c | d | 6. a  | b | c | d |
| 2. a | b | c | d | 7. a  | b | c | d |
| 3. a | b | c | d | 8. a  | b | c | d |
| 4. a | b | c | d | 9. a  | b | c | d |
| 5. a | b | c | d | 10. a | b | c | d |

Last Name \_\_\_\_\_ First Name \_\_\_\_\_ Middle Initial or Name \_\_\_\_\_

Firm Name \_\_\_\_\_

Address \_\_\_\_\_ City \_\_\_\_\_ State \_\_\_\_\_ Zip \_\_\_\_\_

Tel. \_\_\_\_\_ Fax \_\_\_\_\_ E-mail \_\_\_\_\_

AIA ID Number \_\_\_\_\_ Completion date (M/D/Y): \_\_\_\_\_

**Check one:**  \$10 Payment enclosed. (Make check payable to *Architectural Record* and mail to: Continuing Education Certificate, P.O. Box 5753, Harlan IA 51593-1253.) For customer service, call 877/876-8093.

**Charge my:**  Visa  Mastercard  American Express Card# \_\_\_\_\_

Signature \_\_\_\_\_ Exp. Date \_\_\_\_\_

**Check below:**

- To register for AIA/CES credits:** Answer the test questions and send the completed form with questions answered to above address, or fax to 888/385-1428.
- For certificate of completion:** As required by certain states, answer test questions, fill out form above, and mail to above address, or fax to 888/385-1428. Your test will be scored. Those who pass with a score of 80% or higher will receive a certificate of completion.

**Material resources used:** Article: This article addresses issues concerning health and safety.

**I hereby certify that the above information is true and accurate to the best of my knowledge and that I have complied with the AIA Continuing Education Guidelines for the reported period.**

Signature \_\_\_\_\_ Date \_\_\_\_\_



# One Team. Infinite Opportunities.

## Architecture Sector Leaders, San Francisco, CA

Stantec Architecture believes that design should promote social, cultural, and economic vitality. We craft inspired, sustainable environments that serve each client's unique program and mission, involving them in every step of the design process.

With one of the largest integrated building design teams in North America, we have more than 310 LEED® accredited professionals.

We are looking for people who are motivated, talented, and committed to enhancing individual, team, and company performance. Exciting opportunities are available for architecture group leaders in a variety of sectors including: *Academic, Public, Research, Corporate, Healthcare.*

*THE BASICS*

Minimum 15 years of experience  
Graduate of accredited architecture school  
Architecture license required (CA preferred)  
Preference given to candidates with NCARB certificates

Interested candidates should forward, in confidence, a résumé and cover letter to Liz Grohs at [liz.grohs@stantec.com](mailto:liz.grohs@stantec.com).

[www.stantec.com/careers](http://www.stantec.com/careers)

*Stantec is an Equal Opportunity Employer dedicated to Affirmative Action and Workforce Diversity.*

Imagine the possibilities.



**Stantec**

# Make Innovation Work For You



BIM, design-build, sustainable design: Innovations present fantastic opportunities for the forward-thinking architects and engineers who seize them. But being on the leading edge cuts two ways. Greater rewards mean greater risks.

That's where we come in. The Design Professional group of the XL Insurance companies specializes in helping architects and engineers manage their risks. We develop customized programs of insurance and risk management solutions available nowhere else. A prime example is *The XL Insurance Contract Guide for Design Professionals: A Risk Management Handbook for Architects and Engineers*. This authoritative guide focuses on issues and trends in contracts, claims and practice management including valuable loss prevention advice on BIM, design-build and sustainable design. It's one more way we can help you confidently take on new challenges while minimizing your risks.

Let us show you how XL Insurance can help you safely conquer your new frontiers. Visit [www.xldp.com/primer](http://www.xldp.com/primer) to receive your complimentary copy of *Professional Services Agreements: A Primer*, introductory information from the *Contract Guide*.

For more information visit [www.xldp.com](http://www.xldp.com) or phone 800-227-8533, x 210-2508.

**XL INSURANCE**  
FUNDAMENTAL STRENGTH — CAPITAL AND PEOPLE

"XL Insurance" is a registered trademark of XL Capital Ltd. XL Insurance is the global brand used by member insurers of the XL Capital Ltd group of companies. Coverages underwritten by Greenwich Insurance Company, Indian Harbor Insurance Company, XL Specialty Insurance Company, and XL Insurance Company Limited - Canadian Branch are subject to underwriting requirements. Coverages not available in all jurisdictions.

The Contract Guide and the clauses in it are for informational purposes and should not be construed as legal opinion or advice. The Contract Guide publisher is not engaged in rendering legal or other professional services. The user of the Contract Guide should seek the services of competent counsel or professional if legal advice or expert assistance is or may be required.

**CIRCLE 47 ON READER SERVICE CARD OR GO TO [ARCHRECORD.CONSTRUCTION.COM/PRODUCTS/](http://ARCHRECORD.CONSTRUCTION.COM/PRODUCTS/)**





































The living room rises 27 feet and is dominated by views of the woods (top). The client designed the interior using her collection of Modern furniture and art. On the outside of the house (right), Harmon used Atlantic white cedar, a local material that resists rot and is sustainably harvested.



building. Below this transparent “cornice,” though, the house presents a mostly opaque face to the street, with cement board protecting the interior from the southern sun and views from neighboring houses. Deep eaves also shade the upper glass band from direct rays of the sun.

From the street, you enter the house at its upper level via an ipé-wood bridge. As you step inside, you’re greeted with an expansive view of the woods and, in the distance, Crabtree Creek. “I wanted to feel as if I were living in the trees,” explains Strickland. A glass-and-steel wall running the length of the building on its north facade and reaching as high as 27 feet creates an ethereal boundary between inside and out, between modern living and the great outdoors. Polished cherry-wood floors, as well as laminated-wood beams and columns, bring a natural warmth to the large, open living-dining space. Harmon used salvaged steel for an elegant stair that glides along the glass wall, and Strickland found sheets of scrap metal to clad the kitchen’s backsplash and the low partitions enclosing the master bathroom upstairs. The juxtaposition of luxurious materials like polished cherry and rough ones like plywood and scrap steel reminds Harmon of Japanese temples where gold leaf sometimes coats rough-wood columns.

Strickland had taken a class on architectural appreciation taught by Harmon years before and was thoroughly engaged in the design of her house. “This was a real collaboration between client and architect,” states Harmon. Strickland told Harmon from the start that she wanted a house with no ornamentation. Instead, exposed beams, sloping plywood ceiling, and the client’s collection of Modern furniture provide the necessary visual appeal whenever people aren’t staring out the windows and soaking up the view. She also insisted on keeping the manufacturer’s markings on the wood beams, injecting a quirky reminder of provenance to structural members.

“We looked at photographs of George Nakashima’s house [in New Hope, Pennsylvania] when we started thinking about my house,” recalls Strickland. “I loved the way it looks out to the views, the way it makes you feel like you’re outside while being indoors.” ■

#### Sources

**Curtain wall and sliding doors:** *Kawneer*  
**Exterior cement board:** *Hardi Panel*  
**Standing-seam roof:** *Galvalume*  
**Wood windows:** *Pella*  
**Paints and stains:** *Cabots*  
**Metal stairs and rain chain:** *Liquid Forge*

Before



After



**JELD-WEN® windows and doors will look just as great tomorrow as they do today.**

That's because each one is built to last. We prove this with features like our 20-year warranty for products built with solid pine Auralast® wood, which protects against wood decay, water absorption and termites. To learn more call 1.800.877.9482, ext. 1401, or visit [www.jeldwen.com/1401](http://www.jeldwen.com/1401).



**RELIABILITY** *for real life*®

**JELD-WEN**  
WINDOWS & DOORS



Upstairs, A-framed trusses assembled with tongue-and-groove beams create high ceilings in the three bedrooms, allowing abundant daylight to enter.

Viewed from the back, the cantilevered roof extends over the entry porch, joining the main house with the one-room guest quarters, animating the otherwise conventional massing of the structure.

## Salmela Architect's animal-like Keel Cabin rests in the woods of the North Country

By Jane F. Kolley

Duluth, Minnesota, sits on the edge of Lake Superior, the largest freshwater lake in the world. Although connected via the lake and the St. Lawrence Seaway to seafaring vessels from around the globe, this city of 80,000 remains far outside the centers of fashion. It is a place where nature dominates and people seldom make news, with a few exceptions. Duluth native Bob Dylan, for example, captured the toughness of the North Country in his songs for years. But poetry comes in many forms, and Duluth-based David Salmela, FAIA, exemplifies the body and soul of these same wooded lands in his skillfully crafted designs.

During his 38-year career, Salmela has designed mostly residential projects ranging in size from the 468-square-foot Emerson Sauna, for clients in Duluth, to the 306-acre Jackson Meadow, a community in Minnesota (both AIA Honor Award winners in 2005). Born and raised on a dairy farm

### Sources

**Project:** Keel Cabin, Whiteface Reservoir, Makinen, Minnesota  
**Architect:** Salmela Architect—David Salmela, FAIA; Souliyah

Keobounpheng, team

**Engineer:** Bruno Franck

**General contractor:** Rod & Sons Carpentry



1. Guest quarters elevation
2. Guest quarters
3. Entry deck
4. Main house
5. Covered porch

in the state, Salmela, of Finnish origin, blends Modern with traditional design, resulting in an aesthetic that is distinctively Scandinavian, peppered with his signature North Country agricultural vernacular. While no two of his projects are alike, they all reveal a Salmela imprint, with his characteristic accents of bright color, use of local wood and organic shapes, and a desire to be in concert with nature. The 1,656-square-foot Keel Cabin, on the Whiteface Reservoir, in Makinen, Minnesota, demonstrates this well.

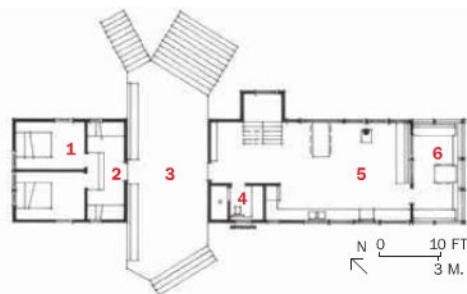
The Keels, who live and work 3 hours away in the Twin Cities, needed a summer retreat, and decided to build a rustic, three-bedroom house and guesthouse on their lake property. Though professionally an engineer, the husband studied architecture in school; his interest in design, tempered by a tight budget, led him and his wife to do much of the site and foundation work themselves. The couple also salvaged the windows and pilings from a manufacturer's boneyard, and Salmela incorporated these into his design. Remarkably, total construction cost only about \$120,000, or \$72 per square foot. "If you buy discarded windows before design, you can't expect the Farnsworth House," jokes Salmela. Still, the cabin is remarkably exuberant.

As you approach the cabin, it emerges as a rectilinear form with painted plywood siding and standing-metal-seam roofing, sitting on



The main house features a kitchen/dining/living space, enveloped in floors, walls, and ceilings of birch. The kitchen countertops are composed of recycled

blackboards (above). A covered porch extends the house into the woods (above right). The one-room guesthouse features a stepped up platform (below).



1. Guest bed platform
2. Guest sitting area
3. Outdoor deck
4. Bath
5. Dining/living room
6. Covered porch



poured-in-place concrete footings. Within this conventional envelope, an unexpected, animal-like shape emerges—a cantilevered form that sags then swells into the rounded back of what appears to be an “aged creature in a boreal forest,” as Salmela describes it. The architect used a similar abstracted form on the Loken Horse Barn (Duluth, 1993) and is considering something similar with the Yingst Screen House (still in design), in Traverse City, Michigan.

You enter the cabin from a wooden deck set between the pair of boxes that make up the house. From the deck, you can walk down to a path that meanders to the lakefront, or go inside, entering the large box that serves as the main house, or the smaller one used for guest quarters. The Keel cabin is rough, says Salmela, pointing out its untamed landscape, eccentric assembly of windows, and modest furnishings. Nevertheless, with subtlety and grace, the building provides a comfortable retreat for its owners. One can almost hear Bob Dylan’s scratchy voice intoning the desolation of this northern locale “where the winds hit heavy on the borderline.” Says Salmela of his career designing in this wooded outpost, “It’s nice to know that good design can reach the furthest point of a culture, if we allow ourselves to feel we deserve it.” ■

#### Sources

**Metal roofing:**

Galvalume

**Skylights:** Velux

**Chairs:** Herman Miller

#### Paints/stains:

Pratt & Lambert

**Chairs:** Herman Miller

**Lighting:** Halo

# Continuing Your Education Never Looked So Good



Brindisi & Yaroscak Custom Builders, Inc.  
Architect: Bartels Pagliaro Architects  
Photo: Olson Photographic

Train with the best. We've been educating the marketplace since 1915 and offer free seminars on cedar shakes and shingles. Come and learn about the wind, fire and impact resistance of an environmentally sound building material, handcrafted with pride by our members.



tel: 604-820-7700 fax: 604-820-0266

[www.cedarbureau.org](http://www.cedarbureau.org)





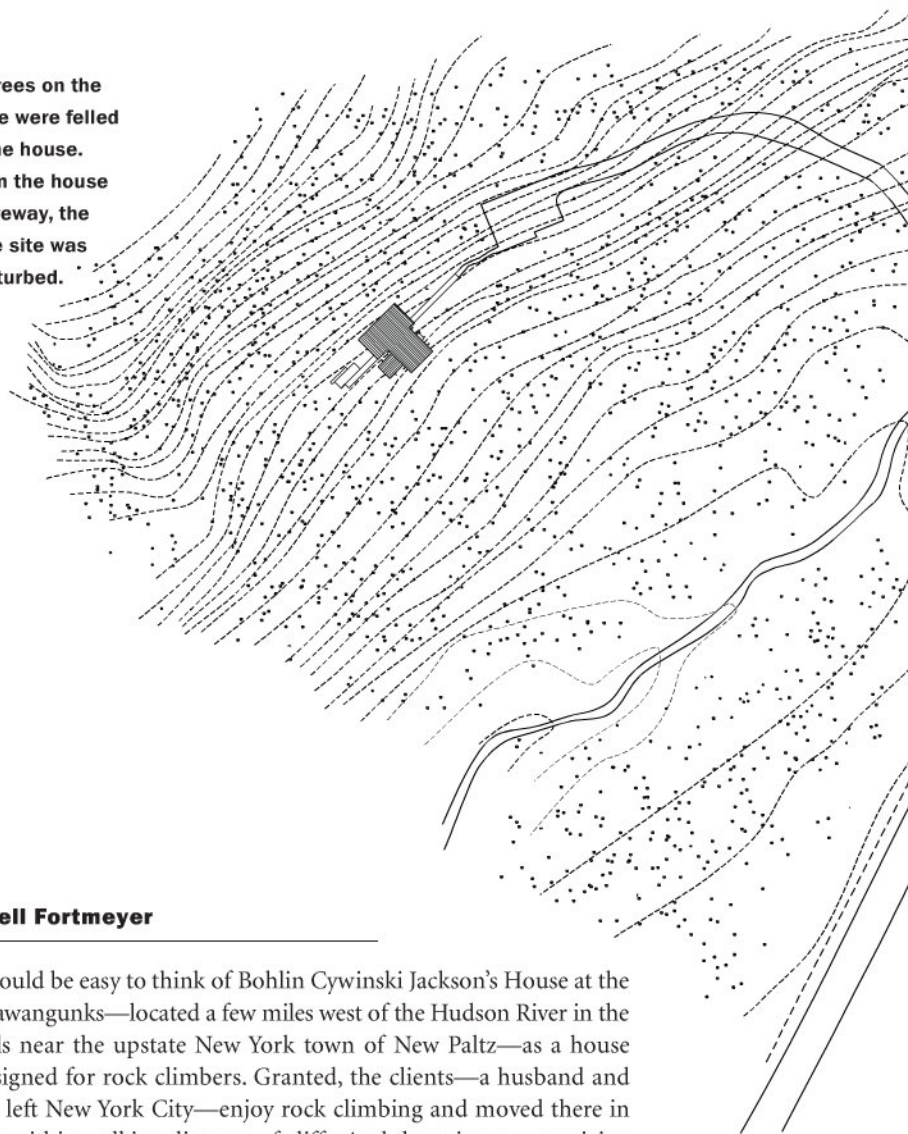








Only six trees on the 6-acre site were felled to build the house. Aside from the house and a driveway, the rest of the site was left undisturbed.



By Russell Fortmeyer

It would be easy to think of Bohlin Cywinski Jackson's House at the Shawangunks—located a few miles west of the Hudson River in the hills near the upstate New York town of New Paltz—as a house designed for rock climbers. Granted, the clients—a husband and wife who left New York City—enjoy rock climbing and moved there in part to be within walking distance of cliffs. And the primary organizing strategy of the house is a light-filled central stair that connects three floors, capped by a ladder to an attic loft. But aside from these details, this analogy oversimplifies the house's relationship to its sloped site.

As the architect Peter Bohlin, FAIA, puts it, up was the only way to go. Since the foundation needed to be close to 4 feet deep, on a substantial slope for a house with a basement, curtailing the foundation's cost meant minimizing the overall footprint. As a result, even on its heavily wooded 6-acre site, the 2,100-square-foot house appears somewhat diminutive. Its vertically arranged program includes living and dining rooms, a kitchen, and a bathroom on the first floor; a master bedroom and bath, as well as a balcony office, on the second; the attic loft for an office and storage; and a basement with a media room, guest bedroom, bath, and utility room.

All of this is arranged in a series of cubes—the basement with a gray-stained concrete base, the living room with red-stained Western red cedar shiplap siding, and the kitchen and second floor with a green-stained version of the cedar. A dining room, entirely clad in glass, stands in for a porch. The wood-framed cubes support the single-pitch metal roof, which

**Project:** House at the Shawangunks, New Paltz, New York

**Architect:** Bohlin Cywinski Jackson—Peter Bohlin, FAIA, principal in charge; Julie Scotchie, project manager; Todd Howard, project architect;

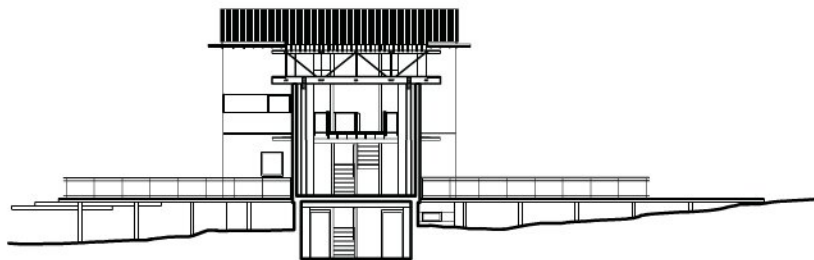
Lee Clark, Julia Dalton, team

**Engineer:** E.D. Pons and Associates (structural)

**General contractor:** Kira Construction



## Bohlin Cywinski Jackson's

















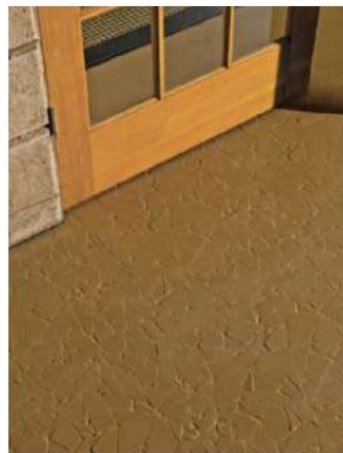


## Products Wood & Resilient flooring



### ◀ Born again boards

Carlisle Wide Plank Floors has received FSC-certification for its entire line of 100 percent postconsumer Reclaimed Antique Wood. The handcrafted, reclaimed wood flooring comes from structures that have been slated for demolition, and includes Antique Chestnut and Antique Barnwood (typically a combination of pine and hemlock). The floor shown here is made from Carlisle's Antique Heart Pine. Carlisle Wide Plank Floors, Stoddard, N.H. [www.wideplankfloors.com](http://www.wideplankfloors.com) **CIRCLE 213**



### ◀ A new flooring dimension

Dimension Rubber Tile from Roppe offers three profiles: Random, a combination of rectangles that interact with each other in various profiles; Stripe, a twist on the original carpet tiles; and Crackle (left), a rendition of cracked ceramic tiles. All of the tiles offer profiles that channel water away from the walking surfaces, decreasing the opportunity for slip/fall accidents. Added performance can be obtained by requesting antifungal, flame-retardant, or oil/grease-resistant compounds. Roppe, Fostoria, Ohio. [www.roppe.com](http://www.roppe.com) **CIRCLE 214**

### ▶ VOC-free flooring

FreiFloor is a new PVC-free contract floor covering made from 80 percent natural minerals and 20 percent polymers. Designed for hard-traffic applications where indoor air quality is a concern, FreiFloor does not have any detectable VOCs and does not need to be waxed or sealed. The heterogenous floor has a compact, ionomer-impregnated wear layer, which gives it excellent wear-, slip-, scratch-, and stain-resistance. Allstate Rubber Corp, New York City. [www.allstaterubber.com](http://www.allstaterubber.com) **CIRCLE 215**



### ▶ Bye-bye formaldehyde

EcoTimber is the first flooring company in North America to offer bamboo flooring made with formaldehyde-free adhesives as a standard product. Other companies offer formaldehyde-free on a special-order basis at a significant premium. The flooring is made of 100 percent bamboo in a multi-ply or horizontal construction with micro-beveled edges. It is finished with an aluminum-oxide-enhanced acrylated-urethane system and a hardened acrylic antiscratch topcoat. EcoTimber, Mill Valley, Calif. [www.ecotimber.com](http://www.ecotimber.com) **CIRCLE 216**



### ▼ Reclaiming a bit of the tropics

TerraMai has introduced an engineered flooring made with reclaimed tropical hardwoods. The engineered, prefinished, reclaimed teak flooring (below) offers the rich color, tight grain, and durability found in centuries-old teak, while the World Mix product offers a blend of reclaimed exotic hardwoods in a kaleidoscope of colors. With a wear layer of reclaimed tropical hardwood over a substrate of FSC-certified new wood, the flooring can be nailed, glued, or floated over a plywood subfloor or a concrete slab. TerraMai, McCloud, Calif. [www.terramai.com](http://www.terramai.com) **CIRCLE 217**



### ▲ Locked-in performance

UnderLock, a new installation solution containing hidden locking tabs, is now offered for Johnsonite's Triumph and Inertia rubber flooring tiles. Designed to withstand constant foot traffic, heaving, rolling, and static abuse in demanding sports-related environments, the floor's hidden locking tabs are installed without adhesive and give the appearance of a more traditional square tile floor. Applications include sports facilities, workout areas, and trade-show floors. Johnsonite, Chagrin Falls, Ohio. [www.johnsonite.com](http://www.johnsonite.com) **CIRCLE 218**

For more information, circle item numbers on Reader Service Card or go to [architecturalrecord.com/products/](http://architecturalrecord.com/products/).

SAVE THE PLANET. SCORE POINTS.

Every VT door can assist you with LEED® points. Because no matter which color you choose, all VT doors are green. VT uses earth-friendly cores in each masterfully crafted Architectural Wood Door. Some even offer the option of FSC-certified material. And you'll also have your choice of either veneer or HPDL face material.

Give the earth a break with VT Architectural Wood Doors. They're the perfect way to score LEED points for any project. And with our new VT CORE Distributor program, we're able to give you unprecedented support and service.

For more information, call 1.800.827.1615, EXT. 345.



**VT** Architectural  
INDUSTRIES Wood Doors

WWW.VTINDUSTRIES.COM

CIRCLE 80 ON READER SERVICE CARD OR GO TO [ARCHRECORD.CONSTRUCTION.COM/PRODUCTS/](http://ARCHRECORD.CONSTRUCTION.COM/PRODUCTS/)

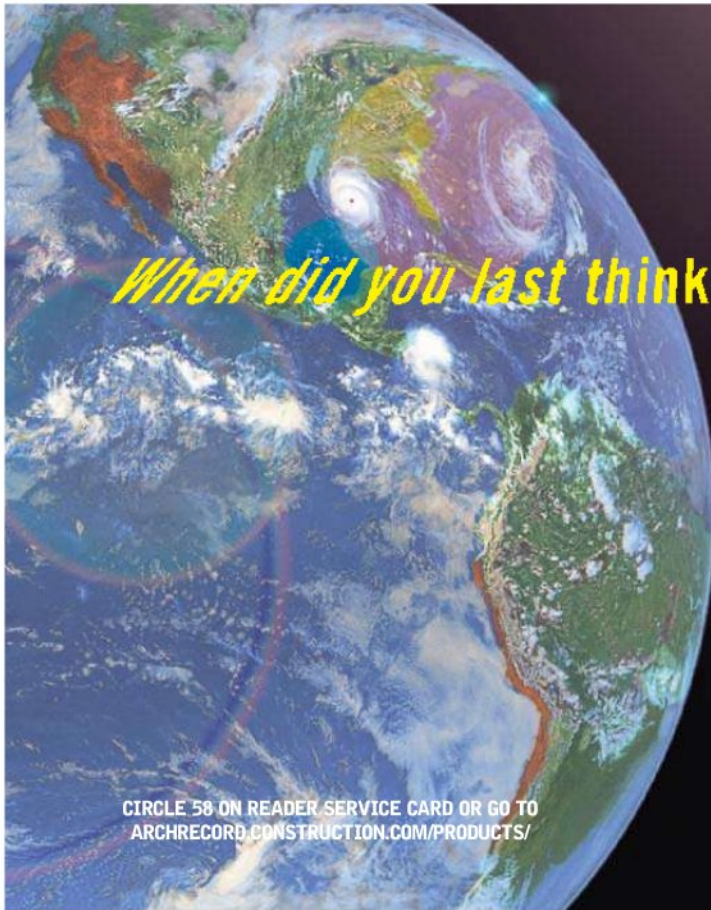












*When did you last think about climate change?*

As the world's leading experts in protecting buildings from the elements, the changing environment is never far from our minds. But far from being an inconvenient truth, we see shifting weather patterns, global warming and a greater need for efficiency as exciting challenges – the inspiration behind a whole new generation of ideas that will see us design beautiful, high performing façades fit for a more sustainable future.

To find out more about how you can develop your skills as part of our tight-knit, multidisciplinary global façades team, please visit our website:

[www.arup.com/facadejobs](http://www.arup.com/facadejobs)

*Committed to equal opportunities.*

ARUP

CIRCLE 58 ON READER SERVICE CARD OR GO TO  
[ARCHRECORD.CONSTRUCTION.COM/PRODUCTS/](http://ARCHRECORD.CONSTRUCTION.COM/PRODUCTS/)



the ultimate cable system

# Arakawa

Arakawa Hanging Systems supplies quick release cable Grippers. Easily install displays, secure them quickly and change them with little effort.

Shown here is our popular floor tensioner that also works well as a turnbuckle for balustrades. This gripper, like many of Arakawa's products, encompass multiple uses and flexible designs. The mechanical grip uses no set screws, which saves time and eliminates damaged cable.

Visit us today.

[www.arakawagrip.com](http://www.arakawagrip.com)



Arakawa Hanging Systems fax: 503.236.0427 toll free: 888.ARAKAWA

CIRCLE 59 ON READER SERVICE CARD OR GO TO  
[ARCHRECORD.CONSTRUCTION.COM/PRODUCTS/](http://ARCHRECORD.CONSTRUCTION.COM/PRODUCTS/)

O R G A N Z A



Loomis

CHARLES LOOMIS, INC.

425.823.4560 / 800.755.0471 / [www.charlesloomis.com](http://www.charlesloomis.com)

CIRCLE 60 ON READER SERVICE CARD OR GO TO  
[ARCHRECORD.CONSTRUCTION.COM/PRODUCTS/](http://ARCHRECORD.CONSTRUCTION.COM/PRODUCTS/)

# Dates & Events

## New and Upcoming Exhibitions

### Map This! Envisioning a Global City Chicago

January 22–March 21, 2008

The Chicago Architecture Foundation joins 30 other cultural institutions for the City of Chicago's Festival of Maps with this new exhibition. At the Chicago Architecture Foundation (CAF). Call 312/922-3432 or visit [www.architecture.org](http://www.architecture.org).

### Design Life Now: National Design Triennial Houston

January 26–April 20, 2008

This exhibition presents the experimental projects, emerging ideas, major buildings, new products, and media that were at the center of contemporary culture from 2003 to 2006. Inaugurated in 2000, the triennial seeks out and presents the most innovative American designs from the prior three years in a variety of fields, including product design, architecture, furniture, film, graphics, new technologies, animation, science, medicine, and fashion. At Houston's Contemporary Arts Museum. Call 713/284-8250 or visit [www.camh.org](http://www.camh.org).

## Ongoing Exhibitions

### On a Grand Scale: Hall of Architecture at 100 Pittsburgh

Through January 13, 2008

This exhibition investigates how this historically significant collection came to be, explains the processes of cast making and restoration, and examines the reasons for collecting architectural casts. Approximately 150 objects, including architectural drawings, period photographs, an antique mold, catalogs, books, correspondence, and a cast-making slide show will illuminate the story of the largest surviving cast collection in the Western Hemisphere. At the Carnegie Museum of Art. Call 412/622-3131 or visit [www.cmoa.org](http://www.cmoa.org).

### Berlin/New York Dialogues New York City

Through January 26, 2008

This exhibition explores lessons learned through the cross-fertilization of ideas among citizens,

policy makers, institutions, and design professionals in Berlin and New York, focusing on exemplary practices and strategies affecting city planning and new building. Using a variety of imagery, illustration, and drawings, the exhibition describes social, political, economic, and cultural processes through current works of architecture and urban planning. At the Center for Architecture. Call 212/683-0023 or visit [www.aiany.org](http://www.aiany.org).

### Eero Saarinen: Shaping the Future Bloomfield Hills, Michigan

Through March 30, 2008

Traveling from Europe, this exhibition is the first retrospective of the life and works of one of the more celebrated designers of the Modern era. Saarinen is best known for his postwar masterpieces, including the 630-foot-tall stainless-steel St. Louis Gateway Arch, the TWA terminal at New



PROTECT. ENHANCE. COMPLETE.

ARMAXENE™ is brand new unit paver technology designed to defend against natural elements such as acid rain, alkalis, efflorescence and ultraviolet light. ARMAXENE™ is NOT a top surface filled with tiny stones simply to produce a smooth finish.

- outstanding protection from acid rain
- superior resistance to UV damage
- long lasting installation
- maintains bright, vibrant color
- low maintenance
- everlasting value
- virtual elimination of efflorescence

HANOVER®  
Architectural Products  
[www.hanoverpavers.com](http://www.hanoverpavers.com) • 800.426.4242

CIRCLE 61 ON READER SERVICE CARD OR GO TO [ARCHRECORD.CONSTRUCTION.COM/PRODUCTS/](http://ARCHRECORD.CONSTRUCTION.COM/PRODUCTS/)



© Tom Bullock

MULTILATERAL INVESTMENT  
ECONOMIC INDEPENDENCE  
INFORMAL SETTLEMENT URBAN  
SLUM BASIC INFRASTRUCTURE  
SELF-SUFFICIENCY

## What 1 billion slum dwellers mean for the environment

Tuesday, January 22 • 6:30 – 8:00 PM

\$12 museum members; \$20 nonmembers; Free for students with valid ID. Register online at [www.nbm.org](http://www.nbm.org).

For the Greener Good lecture series is presented by The Home Depot Foundation.



at the  
**NATIONAL BUILDING MUSEUM**  
Washington, DC

401 F Street NW Washington, DC 20001 | 202.272.2448 | [www.nbm.org](http://www.nbm.org)  
Red Line Metro, Judiciary Square

## Dates & Events

York's John F. Kennedy Airport, numerous university campus plans and buildings, and the General Motors Technology Center near Detroit. At the Cranbrook Art Museum. Call 248/645-3323 or visit [www.cranbrookart.edu/museum](http://www.cranbrookart.edu/museum) or [www.eerosaarinen.net](http://www.eerosaarinen.net).

## Lectures, Conferences, and Symposia

### imm cologne—The International Furnishing Show Cologne, Germany

January 14–20, 2008

More than 1,300 exhibitors from all over the world, international trend and design experts, and creative newcomers will present the home styles of the future and reveal which furnishing trends will shape the coming year. Call 49 180 591 3131 or visit [www.imm-cologne.com](http://www.imm-cologne.com).

### Public Program: The Center on Halsted Chicago

January 23, 2008

Carlos Martinez, principal and regional design director, Gensler Chicago, presents a lunchtime lecture on the new LGBT community center in Chicago at the Chicago Architecture Foundation (CAF). Call 312/922-3432 or visit [www.architecture.org](http://www.architecture.org).

## Competitions

### The 99K House Competition

Deadline: January 14, 2008

A two-stage national competition to design a sustainable, affordable house that addresses the needs of the low-income family in the Gulf Coast region. The competition objectives are to broaden awareness of green building strategies applicable to affordable housing; generate and publicize buildable examples of sustainable, affordable houses; and construct an exemplary sustainable, affordable house prototype. For more information, visit [www.the99house.com](http://www.the99house.com).

### Multiplicity: The Art of the Furniture Prototype

Deadline: January 15, 2008

The competition is open to studio furniture makers, artists, architects, and industrial designers. Prototypes may be of any type of furniture in any materials—created since January 2000—and

intended for production, whether small batch or mass production. Call 828/255-1949 or visit [www.furnituresociety.org/multiplicity](http://www.furnituresociety.org/multiplicity).

### AMD Open Architecture Challenge

Deadline: January 15, 2008

The challenge is to design a sustainable multi-purpose technology facility for underserved communities. The competition is open to all. Design professionals and nonprofessionals alike are invited to compete to develop the winning technology-center design. Student entries are welcome. Call 415/332-6273, ext. 320, or visit [www.openarchitecturenetwork.org/challenge](http://www.openarchitecturenetwork.org/challenge).

### Jeld-Wen Student Design Competition

Deadline: February 29, 2008

Door manufacturer Jeld-Wen challenges students to design an entry door. Winners will be selected in spring 2008 by a panel of independent industry professionals and Jeld-Wen experts. The winning students' door designs will be announced at the Pacific Coast Builders Conference in San Francisco, June 25–27, 2008. Visit [www.jeld-wen.com](http://www.jeld-wen.com).

### Holcim Awards: For Sustainable Construction

Deadline: February 29, 2008

Past winners have included architects, urban planners, civil engineers, professors, industrial engineers, students, and a marine biologist. The Holcim Awards promote innovation in sustainable construction around the world. For more information, visit [www.holcimawards.org](http://www.holcimawards.org).

### 2008 National Student Steel Bridge Competition

May 23–24, 2008

This competition will take place at the University of Florida in Gainesville, Florida. Visit [www.2008steelbridge.com](http://www.2008steelbridge.com) for more information.

E-mail event and competition information two months in advance to [elisabeth\\_broome@mcgraw-hill.com](mailto:elisabeth_broome@mcgraw-hill.com).

# Designing High-Performance Buildings?

Don't forget to make your entrances high-performance, too.



Specifying run-of-the-mill entrance systems in your exterior openings can leave holes in your best green designs. But when you choose flush doors that eliminate regular repainting, don't off-gas VOCs, and provide a good thermal barrier, they can help you earn LEED points—and make points with facility owners, too.

#### Superior performance reduces life cycle cost

Independent lab testing proves Special-Lite flush doors deliver superior thermal and emissions performance. Plus, the durability of our custom entrance systems provides longer life with far less maintenance for the lowest possible lifetime cost—even in the toughest applications.



For product literature, test results and specifications, visit our website at: [www.speciallite.com/performance](http://www.speciallite.com/performance).



[www.speciallite.com/performance](http://www.speciallite.com/performance)  
1-800-821-6531

CIRCLE 63 ON READER SERVICE CARD OR GO TO [ARCHRECORD.CONSTRUCTION.COM/PRODUCTS/](http://ARCHRECORD.CONSTRUCTION.COM/PRODUCTS/)

## Turning Gray Concrete GREEN

These microscopic, glassy spheres are fly ash – and at Headwaters Resources, we sell millions of tons of them every year.

Produced by burning coal at electric power plants, fly ash might be destined for disposal in a landfill. But when added to concrete, fly ash makes concrete easier to work, stronger and more durable.

Fly ash also enhances the environmental performance of concrete. Mining and manufacturing of natural raw materials can be reduced along with decreasing greenhouse gas emissions. In fact, using a ton of fly ash can save almost a ton of CO<sub>2</sub> emissions from being introduced into the atmosphere. In addition to concrete, fly ash is used in mortars, stuccos, paints, artificial stone, carpets, ceiling tiles, soil cement, pervious concrete and a variety of other building materials.

*That's an improvement worth specifying.*

Contact Headwaters Resources for free technical literature and information on how fly ash use benefits the environment.



**HEADWATERS**  
RESOURCES

[www.flyash.com](http://www.flyash.com) • 1-888-236-6236

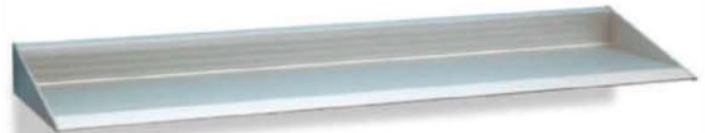
CIRCLE 62 ON READER SERVICE CARD OR GO TO [ARCHRECORD.CONSTRUCTION.COM/PRODUCTS/](http://ARCHRECORD.CONSTRUCTION.COM/PRODUCTS/)

## Say Goodbye to Tacky Shelves

No more tacky supports that look bad, really bad. Now we offer over 20 models of sleek design shelves and shelf supports so your furniture looks its best.

SH20

**Epomeo Shelf.** Shelves do not get more hip than this! Extruded of one piece satin finish aluminum with mild serrations; concealed mounting system. 11" deep and 3" high at back. Five stock lengths: 39<sup>3</sup>/<sub>8</sub>", 59", 78", 98<sup>3</sup>/<sub>8</sub>" and 118<sup>1</sup>/<sub>8</sub>".



"FINE ARCHITECTURAL HARDWARE FOR YOUR FINE FURNITURE"®

Doug Mockett & Company, Inc. • Manhattan Beach, CA • 800.523.1269

**MOCKETT**  
DOUG MOCKETT & COMPANY, INC.

[www.mockett.com](http://www.mockett.com)

CIRCLE 64 ON READER SERVICE CARD OR GO TO [ARCHRECORD.CONSTRUCTION.COM/PRODUCTS/](http://ARCHRECORD.CONSTRUCTION.COM/PRODUCTS/)

# Some of our best work



is on exhibit at the de Young.

To have our decorative limestone coating artfully placed throughout such an architectural tour de force is, to us, the quintessential compliment.

Specifying the ArcusStonecoat™ system, architects for the de Young enhanced the museum's organic aesthetic by sculpting our reconstituted limestone into columns, counters, benches, desks - even booths.

ArcusStone® provided these architects with a gratifying alternative to cut stone that is not only economical, but with a compressive strength in excess of 5,800 psi, enduring as well.

A quality that just might make ArcusStone part of the de Young's permanent collection.

For more about ArcusStone products and their many uses, visit [www.arcusstone.com](http://www.arcusstone.com).



ArcusStone®

CIRCLE 65 ON READER SERVICE CARD OR GO TO [ARCHRECORD.CONSTRUCTION.COM/PRODUCTS/](http://ARCHRECORD.CONSTRUCTION.COM/PRODUCTS/)

**BEAR  
CREEK  
LUMBER**  
BearCreekLumber.com

welovewood@bearcreeklumber.com ~ (800) 597-7191  
Quality Renewable Lumber ~ Premium Customer Service

CIRCLE 66 ON READER SERVICE CARD OR GO TO [ARCHRECORD.CONSTRUCTION.COM/PRODUCTS/](http://ARCHRECORD.CONSTRUCTION.COM/PRODUCTS/)



**ADVANCE LIFTS**

## DISAPPEARING DOCK LIFT

**NOW YOU SEE IT**



**NOW YOU DON'T**



*We can tailor a dock lift to fit your needs and budget.*

**1-800-843-3625**

[www.advancelifts.com](http://www.advancelifts.com)

**EVERY DOCK NEEDS A LIFT**

CIRCLE 67 ON READER SERVICE CARD OR GO TO [ARCHRECORD.CONSTRUCTION.COM/PRODUCTS/](http://ARCHRECORD.CONSTRUCTION.COM/PRODUCTS/)

The Art of Limestone.™

















**Hardwood Plywood Panels**

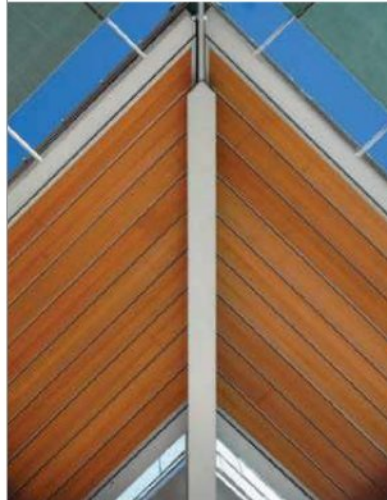


**Timber Products Company**

Timber Products Company's Green™ hardwood plywood line is manufactured with certified wood and a special resin that meets green building requirements such as LEED® and the California Air Resources Board formaldehyde regulations. Available with an MDF, veneer or particleboard core and with either Sustainable Forestry Initiative® (SFI) or Forest Stewardship Council (FSC) certification. 800-547-9520 [www.greentproducts.com](http://www.greentproducts.com)

| Circle 150

**Sliced Wood Veneers**



**Contact Industries**

Defect-free wood veneer of any species on the outside. Your choice of aluminum, PVC, MDF or finger-jointed lumber on the inside. Contact Industries' innovative use of profile wrapping technologies extends natural resources by wrapping sliced wood veneers over common and not-so-common substrates. Their unique use of veneer and adhesive technologies allows designers to create things new and beautiful while minimizing impacts on the natural environment. 800-547-1038 [www.contactind.com](http://www.contactind.com)

| Circle 153

**Architectural Door Hardware**



**DORMA Architectural Hardware**

With its unique cam and roller design, the TS93 System in Contur Design represents the pinnacle of surface-applied door closers. Designed for internal and external applications, the TS93 enables a door to open much easier than one operated by a rack and pinion closer. The ADA-compliant TS93 provides regular arm operating efficiency with the sleek aesthetics of a track arm. 800-523-8483 [www.dorma-usa.com](http://www.dorma-usa.com)

| Circle 151

**Recycled Wallcoverings**



**Second-Look Recycled Wallcovering**

Winner of Architectural Record's Editor's Picks, Second-Look is the first vinyl wallcovering with post-consumer recycled content. New from Versa, Cirqa and Plexus, Second Look has the same great look and quality you expect of vinyl wallcovering. And the same great price. Second-Look also reclaims vinyl wallcovering from renovation projects. The low-VOC recycled wallcovering supports LEED criteria. Learn about Second-Look and find your distributor at their web site. 866-522-6072 Email [info@second-lookwc.com](mailto:info@second-lookwc.com) [www.second-lookwc.com](http://www.second-lookwc.com)

| Circle 154

**Exit Devices**



**SARGENT**

SARGENT's Beacon™ exit device combines synchronized audio and visual alerts, making it easy for building occupants to quickly locate exits during an emergency, especially in low visibility conditions. Beacon can connect to the building's alarm system so when activated, it will emit a pulse of light and white noise followed by a multilingual message declaring "exit located here." A bright laser beamed from Beacon guides people directly to the exit device touch-bar for easy egress. 800-727-5477

| Circle 152

**Hand Dryers**



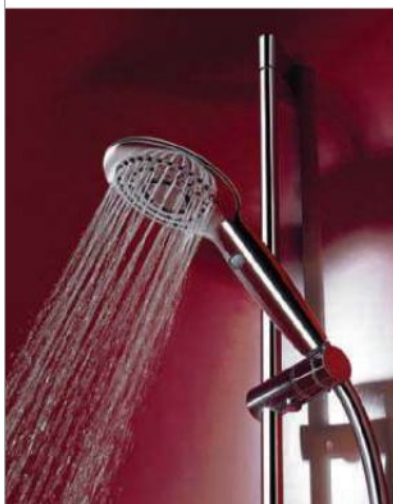
**Excel Dryer Inc.**

XLERATOR® hand dryer, The New Industry Standard, dries hands completely in 10 - 15 seconds and uses 80 percent less energy than conventional dryers. XLERATOR represents a 95% cost savings versus paper towels and eliminates their maintenance while improving restroom hygiene. XLERATOR is also GreenSpec® Approved and helps qualify for LEED® Credits. 800-255-9235 [www.exceldryer.com](http://www.exceldryer.com)

| Circle 155

## Celebrating *Architectural Record* Product Reports 2007

### Innovative Hand Showers

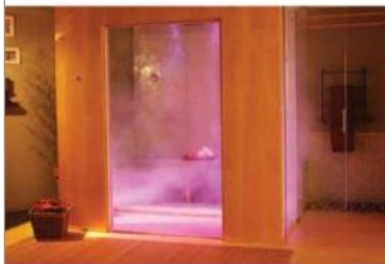


#### KWC AMERICA

Exuding a feeling of elegant weightlessness, the Hansapurejet embraces genuine minimalist design. The slender design of the fully chromed hand shower allows for seamless integration into a wide variety of shower concepts including Universal Design. Featuring a smooth scroll converter the Hansapurejet easily oscillates between Classic-Jet and Soft-Jet spray modes. 770-334-2121 Fax number 770-334-2128 Email [dstroud@kwcamerica.com](mailto:dstroud@kwcamerica.com) [www.hansa.com](http://www.hansa.com)

| Circle 156

### Spa Package



#### Mr. Steam

The Mr.Steam® Spa Package combines the best features and accessories including the Aromasteam™ aromatic oils system, Chromasteam™ mood lighting system, and in-shower Music Therapy™ speakers to enhance the steambathing experience. The innovative design of the Aroma Steamhead delivers unparalleled steam flow, cooler-to-the-touch surface temperatures and quieter steam infusion. 800-76-STEAM Fax number 718-472-3256 Email [info@mrsteam.com](mailto:info@mrsteam.com) [www.mrsteam.com](http://www.mrsteam.com)

| Circle 157



## For lightness of touch. DORMA TS93 in Contur Design.

With its unique cam and roller design, the TS93 System in Contur Design represents the pinnacle of surface applied door closers. Designed for internal and external applications, the TS93 enables a door to open much easier than one operated by a rack and pinion closer. The ADA-compliant TS93 provides regular arm operating efficiency with the sleek aesthetics of a track arm.

DORMA Architectural Hardware · Dorma Drive  
Reamstown, PA 17567 · Tel: 800-523-8483  
Fax: 800-274-9724 · [www.dorma-usa.com](http://www.dorma-usa.com)



CIRCLE 77 ON READER SERVICE CARD OR GO TO [ARCHRECORD.CONSTRUCTION.COM/PRODUCTS/](http://ARCHRECORD.CONSTRUCTION.COM/PRODUCTS/)





**AUTHORITATIVE**  
~SINCE 1888~

AIA Contract Documents, the industry standard for 120 years.

You can depend on AIA Contract Documents for all of your contract needs. The 2007 Update of the most **widely accepted** agreements in the industry is available in a variety of **easy-to-use** electronic and paper formats. Our **Microsoft® Word-based** software gives you the most **comprehensive**, widely understood set of documents available. With all of these benefits, it's easy to understand how our contract documents **lead** the industry.

To find out more, visit us online at [www.aiacontractdocuments.org/architectAR2](http://www.aiacontractdocuments.org/architectAR2).

**AIA Contract Documents®**  
THE INDUSTRY STANDARD.  
2007 Update



































<b>40</b>	23	<b>S</b>	Acme Brick <a href="http://www.brick.com/colorguide">www.brick.com/colorguide</a>	<b>cov-3</b>	78	<b>S</b>	Dow Corning <a href="http://dowcorning.com">dowcorning.com</a>	<b>14</b>	9	<b>S</b>	PPG <a href="http://ppgideascapescapes.com">ppgideascapescapes.com</a>
<b>180</b>	67	<b>S</b>	Advance Lifts <a href="http://advancelifts.com">advancelifts.com</a>	<b>64</b>	36	<b>S</b>	E Dillon & Company <a href="http://edillon.com">edillon.com</a>	<b>60</b>	34		Quality Stone Veneer <a href="http://qualitystoneveneer.com">qualitystoneveneer.com</a>
<b>190</b>			AIA <a href="http://aia.org">aia.org</a>	<b>63</b>	35	<b>S</b>	EFCO Corporation <a href="http://efcocorp.com">efcocorp.com</a>	<b>181</b>	70	<b>S</b>	Rakks <a href="http://rakks.com">rakks.com</a>
<b>204,205,207</b>			AIA <a href="http://aia.org">aia.org</a>	<b>168</b>	144		Eventscape <a href="http://eventscape.net">eventscape.net</a>	<b>181</b>	69		Rejuvenation Inc <a href="http://rejuvenation.com">rejuvenation.com</a>
<b>20</b>	12	<b>S</b>	Alcoa Architectural Products <a href="http://alcoaarchitecturalproducts.com">alcoaarchitecturalproducts.com</a>	<b>185</b>	74	<b>S</b>	Excel Dryer Inc <a href="http://exceldryer.com">exceldryer.com</a>	<b>54</b>	31		Robinson Brick Company <a href="http://robinsonbrick.com">robinsonbrick.com</a>
<b>41</b>	24		ALPOLIC/Mitsubishi Chemical FP America Inc <a href="http://alpolic-usa.com">alpolic-usa.com</a>	<b>58</b>	33	<b>S</b>	FLEXCO <a href="http://flexcofloors.com">flexcofloors.com</a>	<b>37</b>	20		Rocky Mountain Hardware <a href="http://rockymountainhardware.com">rockymountainhardware.com</a>
<b>53</b>	30	<b>S</b>	American Specialties Inc <a href="http://americanspecialties.com">americanspecialties.com</a>	<b>10-11</b>	8		Gardco Lighting <a href="http://sitelighting.com">sitelighting.com</a>	<b>186</b>	75	<b>S</b>	Sargent <a href="http://studiocollection.com">studiocollection.com</a>
<b>176</b>	59		Arakawa Hanging Systems <a href="http://arakawagrip.com">arakawagrip.com</a>	<b>176A-D</b>			Gypsum Association <a href="http://gypsum.org">gypsum.org</a>	<b>106</b>	41		Simpson Strong-Tie Company Inc <a href="http://simpsonstrongwall.com">simpsonstrongwall.com</a>
<b>18</b>			Architectural Record <a href="http://archrecord.construction.com">archrecord.construction.com</a>	<b>161</b>	52	<b>S</b>	Hafele <a href="http://hafeleonline.com">hafeleonline.com</a>	<b>172</b>			Skyscraper Museum, The <a href="http://skyscraper.org">skyscraper.org</a>
<b>180</b>	65		ArcusStone <a href="http://arcusstone.com">arcusstone.com</a>	<b>177</b>	61		Hanover Architectural Products <a href="http://hanoverpavers.com">hanoverpavers.com</a>	<b>31</b>	17	<b>S</b>	Sloan Valve Company <a href="http://sloanvalve.com">sloanvalve.com</a>
<b>64A-D</b>			Arkema Inc <a href="http://kynar500.com">kynar500.com</a>	<b>4</b>	3	<b>S</b>	HDI Railing Systems <a href="http://hdirailings.com">hdirailings.com</a>	<b>45</b>	26		SMACNA <a href="http://asm-expertise.com">asm-expertise.com</a>
<b>cov2-1</b>	1	<b>S</b>	Armstrong <a href="http://armstrong.com">armstrong.com</a>	<b>179</b>	62		Headwaters Resources <a href="http://flyash.com">flyash.com</a>	<b>179</b>	63	<b>S</b>	Special-Lite <a href="http://special-lite.com">special-lite.com</a>
<b>67</b>	37		Arpa USA <a href="http://arpausa.com">arpausa.com</a>	<b>56</b>	32	<b>S</b>	High Concrete Structures Inc <a href="http://highconcrete.com">highconcrete.com</a>	<b>135</b>	46		Stantec <a href="http://stantec.com">stantec.com</a>
<b>176</b>	58		ARUP <a href="http://arup.com">arup.com</a>	<b>153</b>	50	<b>S</b>	JELD-WEN Windows & Doors <a href="http://jeld-wen.com">jeld-wen.com</a>	<b>38,39</b>	21,22		Steel Door Institute <a href="http://steeldoors.org">steeldoors.org</a>
<b>180</b>	66		Bear Creek Lumber <a href="http://bearcreeklumber.com">bearcreeklumber.com</a>	<b>2-3</b>	2	<b>S</b>	Kawneer Company Inc <a href="http://kawneer.com">kawneer.com</a>	<b>167</b>	54		Steel Joist Institute <a href="http://steeljoist.org">steeljoist.org</a>
<b>126</b>	43	<b>S</b>	Belden Brick Company, The <a href="http://beldenbrick.com">beldenbrick.com</a>	<b>203</b>			Kohler <a href="http://kohler.com">kohler.com</a>	<b>6</b>	5		Sun Valley Bronze <a href="http://svbronze.com">svbronze.com</a>
<b>131</b>	44		Belgard <a href="http://belgard.biz">belgard.biz</a>	<b>8-9</b>	7		Loewen <a href="http://loewen.com">loewen.com</a>	<b>5</b>	4		Technical Glass Products <a href="http://fireglass.com">fireglass.com</a>
<b>26</b>	15		Bentley Systems Inc <a href="http://bentley.com">bentley.com</a>	<b>cov-4</b>	79	<b>S</b>	Lutron <a href="http://lutron.com">lutron.com</a>	<b>35</b>	19		Timely <a href="http://timelyframes/ar.com">timelyframes/ar.com</a>
<b>174</b>	56	<b>S</b>	Best Sign Systems Inc <a href="http://bestsigns.com">bestsigns.com</a>	<b>183</b>	72	<b>S</b>	Marlite <a href="http://marlite.com">marlite.com</a>	<b>75</b>	39		USC School of Engineering <a href="http://viterbi.usc.edu">viterbi.usc.edu</a>
<b>133</b>	45		Bluworld of Water <a href="http://bluworldusa.com">bluworldusa.com</a>	<b>19</b>	11		Metal Construction Association <a href="http://metalconstruction.org">metalconstruction.org</a>	<b>166</b>		<b>S</b>	USG Corporation <a href="http://usg.com">usg.com</a>
<b>181</b>	68		Cascade Coil Drapery <a href="http://cascadecoil.com">cascadecoil.com</a>	<b>22</b>	13		Mitsubishi Electric <a href="http://transforminghvac.com">transforminghvac.com</a>	<b>12-13</b>		<b>S</b>	USG Corporation <a href="http://usg.com">usg.com</a>
<b>157</b>	51		Cedar Shake & Shingle Bureau <a href="http://cedarbureau.org">cedarbureau.org</a>	<b>173</b>	55		modularArts <a href="http://modulararts.com">modulararts.com</a>	<b>77</b>	40		VERSA-LOK <a href="http://versa-lok.com">versa-lok.com</a>
<b>7</b>	6	<b>S</b>	CENTRIA Architectural Systems <a href="http://centria.com">centria.com</a>	<b>46</b>	27	<b>S</b>	Mortar Net <a href="http://mortarnet.com">mortarnet.com</a>	<b>171</b>	80	<b>S</b>	VT Industries <a href="http://vtindustries.com">vtindustries.com</a>
<b>176</b>	60		Charles Loomis <a href="http://charlesloomis.com">charlesloomis.com</a>	<b>187</b>	76	<b>S</b>	Nana Wall Systems Inc <a href="http://nanawall.com">nanawall.com</a>	<b>24-25</b>	14		Vulcraft, A Division of Nucor Corp <a href="http://nucor.com">nucor.com</a>
<b>42</b>	25		CNA AEC Design Liability <a href="http://planetriskmanagement.com">planetriskmanagement.com</a>	<b>178</b>			National Building Museum <a href="http://nbm.org">nbm.org</a>	<b>33</b>	18		Walter P. Moore <a href="http://walterpmoore.com">walterpmoore.com</a>
<b>29</b>	16	<b>S</b>	Cold Spring Granite <a href="http://coldspringgranite.com/armor">coldspringgranite.com/armor</a>	<b>73</b>	38		Natural Stone Council <a href="http://genuinestone.org">genuinestone.org</a>	<b>165</b>	53		Western Red Cedar Lumber Association <a href="http://realcedar.org">realcedar.org</a>
<b>17</b>	10	<b>S</b>	Construction Specialties <a href="http://c-sgroup.com/3000">c-sgroup.com/3000</a>	<b>175</b>	57		Oasys <a href="http://oasys-software.com/mailmanager">oasys-software.com/mailmanager</a>	<b>125</b>	42	<b>S</b>	Whirlpool <a href="http://whirlpool.com">whirlpool.com</a>
<b>184</b>	73		Contact Industries <a href="http://contactind.com">contactind.com</a>	<b>142</b>	49	<b>S</b>	Pella Windows & Doors <a href="http://pella.com">pella.com</a>	<b>136</b>	47		XL Insurance - Design Professionalxldp.com
<b>189</b>	77	<b>S</b>	DORMA Group North America <a href="http://dorma-usa.com">dorma-usa.com</a>	<b>50</b>	29	<b>S</b>	Pilkington <a href="http://pilkington.com">pilkington.com</a>	<b>137-141</b>	48		XL Insurance - Design Professionalxldp.com
<b>179,181</b>	64,71	<b>S</b>	Doug Mockett & Company Inc <a href="http://mockett.com">mockett.com</a>	<b>49</b>	28	<b>S</b>	Poltrona Frau <a href="http://frauusa.com">frauusa.com</a>				

For information from advertisers circle the corresponding number on the Reader Service Card or go to **ArchitecturalRecord.com**, Products Tab, Reader Service. Access PDF's of all full-page or larger ads appearing in *Architectural Record* each month under "Products" tab at Product Ads. Use this to e-mail ads to clients or colleagues, print out and save.

## Attend the AIA 2008 Convention for Free\*



When you're looking to talk architecture, there's no substitute for hanging with a few thousand fellow architects. It's one of the only times where the statement "I'm an architect" is a bit redundant.

Of course, there will be hundreds of design industry professionals there as well... just in case you feel the need to suitably impress a non-architect here and there.

If that isn't enough, try this... gather a group of compatriots with the idea of visiting one of Boston's fine eateries once the show closes. The opportunities for engaging local Bostonians in conversation about yourself are numerous. The only thing better than the feeling of saying "I'm an architect" is the camaraderie you share by announcing "We're architects!"

**Become an AIA member and get a free registration to the AIA 2008 Convention.  
Call 800-242-3837 or go to [www.aia.org/join\\_today](http://www.aia.org/join_today).**

\* Offer is valid for first-time new Architect and Associate members only. Other restrictions apply. Visit [www.aia.org/join\\_today](http://www.aia.org/join_today) for more information.



# The Architect's Hand



6' X 6' (right), acrylic on canvas, and #1A (below), foam and acrylic, date from 2007.



## Art in Michael Lehrer's architecture

Michael Lehrer, a California-based architect and long-time artist, received an unusual gift from his colleagues last year: a 6-by-6-foot canvas. "In the spirit of creative office culture, I was challenged to make at least one mark on the canvas every day," recalls Lehrer. The canvas, completed after several months of Lehrer's daily additions (above), is centrally displayed in his office and is representative of a core aspect of his architectural practice. "Attenuated spaces and sight lines, long axial views: Those things manifest in painting are in virtually every project we do," says Lehrer. To hone these artistic skills among his colleagues, Lehrer has been hosting bimonthly life-drawing classes in his office this past year. "It's a time when everyone comes together to be attuned, agile, and visually alive," he says. "The model gives the architects the needed perspective of how space relates to people." In addition to capturing the human figure with watercolor and charcoal, Lehrer also embodies the model's form in what he calls a 3D drawing. He shapes foam core with a razor blade and then accentuates the figure with acrylic paint (left). "It's an ongoing training of the eye and a reconfirmation of our soul," he says. "And when one sees the relationship between one's doodles and paintings and one's body of work, it is magical." *Rebecca Ward*

## Design Enhancer

Technology Leader

Trusted Ally

## Global Partner

Proven Performance

Sustainable Design

## Silicone Experts

Solutions Partner

## Innovative Solutions

Testing Experts

## Thermal Performance

Dow Corning is a registered trademark of Dow Corning Corporation. ©2008 Dow Corning Corporation. All rights reserved. AV10930

## Dow Corning: Innovative Solutions for Architectural Creativity

Architects of the Złote Tarasy in Warsaw, Poland, envisioned a space that let the imagination soar. Their dramatically curved ceiling design required an equally creative installation approach. Dow Corning provided an innovative solution that successfully bonded and sealed more than 10,000 square meters of structurally glazed triangular glass panels. See what having Dow Corning as a global partner can do for you today at [www.dowcorning.com/construction](http://www.dowcorning.com/construction).

### European Technical Information Center:

English +49 (0)611 237 778

French +49 (0)611 237 773

German +49 (0)611 237 779

**E-mail:** [construction.marketing@dowcorning.com](mailto:construction.marketing@dowcorning.com)

*We help you  
invent the future.™*

[www.dowcorning.com](http://www.dowcorning.com)

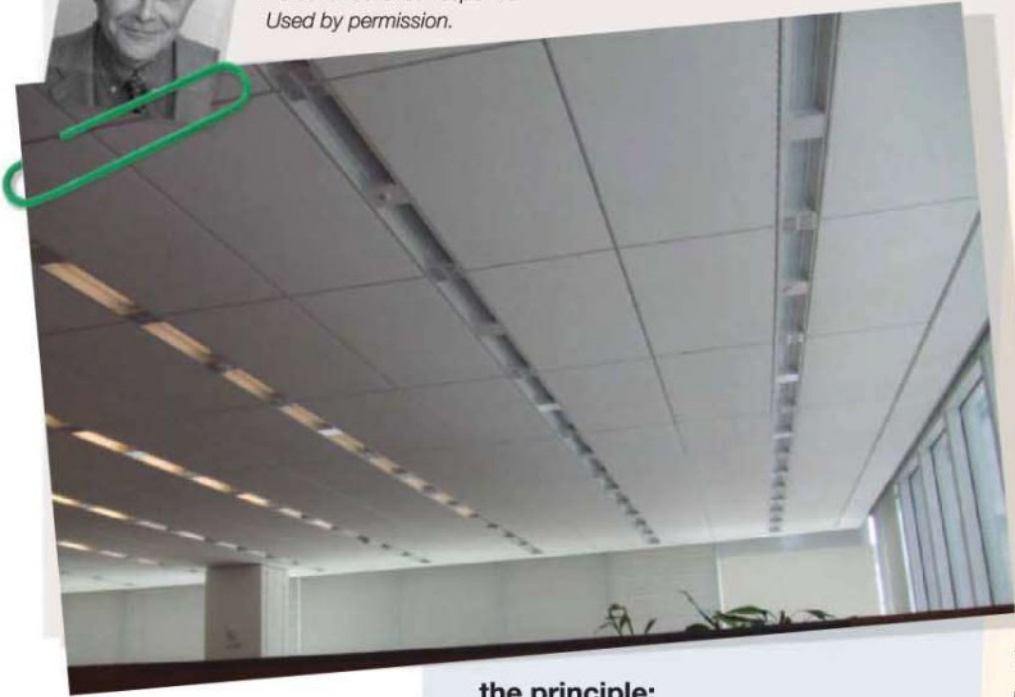
**DOW CORNING**

**CIRCLE 78 ON READER SERVICE CARD OR GO TO [ARCHRECORD.CONSTRUCTION.COM/PRODUCTS/](http://ARCHRECORD.CONSTRUCTION.COM/PRODUCTS/)**

“I went out to see the NY Times building and was very impressed with how well it is working. Below is a picture I took of the commissioned 8th floor, and you can see how much energy is being saved right in the picture...”

Francis Rubinstein  
Staff Scientist  
Building Technologies Department  
Lawrence Berkeley National Laboratory

*Actual unsolicited response.  
Used by permission.*



**the principle:**

Dimming lights saves energy.

**the strategy:**

Automatically dim lights near windows when daylight is available.

**the details:**

[www.lutron.com/nyt](http://www.lutron.com/nyt)

**the numbers:**

Fluorescent fixtures with Lutron EcoSystem™ smart dimming ballasts – **15,000**

Expected annual lighting energy savings – **40%**

Annual CO<sub>2</sub> reduction – **410 metric tons**

Creating a smart, sustainable building requires a collaboration of design, engineering, and innovative technology. The New York Times, their design team, and Lutron created a lighting control system that achieves a seamless blend of comfort, productivity, and energy savings.

As the global leader in daylight and electric light control, Lutron has been delivering style, innovation, and energy savings to buildings for over 45 years.

Call us to find out how to use lighting controls to enhance your projects. 1.866.299.2073

