



A.L
ARCHITECTURAL LIGHTING

AL CELEBRATES
**30 MOMENTS
IN LIGHTING**

NOV/DEC 2016

h>w

**One system.
Countless possibilities.**

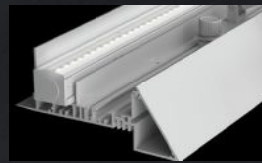




The EF System

Recessed Modular Linear Lighting

The EF System enables designers and specifiers to drastically clean up the ceiling plane by incorporating multiple types of architectural LED lighting into one recessed system. The system can be used for linear slots, cove lighting, accent lighting, perimeter lighting and more.



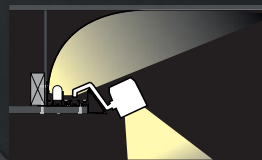
Extruded Aluminum Channel

The EF System Channel can accommodate both linear LED strips as well as our high-performance adjustable LED Light Units



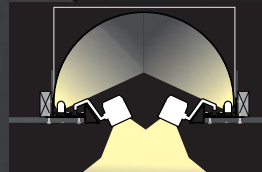
Fully Adjustable LED Light Units

Our LED Light Units boast 4 points of articulation with locking joints. Anything from hidden accent lighting to exposed down-lighting is possible.



Cove and Perimeter Lighting

The EF Channel can be utilized to build out a cove or follow the perimeter of a room. Both linear indirect and direct LED lighting may be used together.



Accent Slots with Uplighting

Channel may be mounted in opposing positions to form linear ceiling slots. Linear LED may be used to illuminate a rounded slot interior while LED Light Units handle downlighting and accents.



fillumination.com

©2016 LF ILLUMINATION LLC

I AM AIA

Get ahead with AIA

The American Institute of Architects is where the architecture and design communities come together to share knowledge, gain expertise, get connected and stay involved. Whether you're an experienced architect or emerging professional, sole practitioner or mentoring new architects, AIA has tools and resources that support you at every stage. Join us.

Visit aia.org/join today.



The American
Institute
of Architects

Loay Quota, AIA
Member since 2002





MARK ARCHITECTURAL LIGHTING™

RUBIK™

**A Revolutionary Design
Vocabulary for the Grid.**

Empower your creativity
without complexity.

A·L 30 YEARS

ARCHITECTURAL LIGHTING

EDITOR-IN-CHIEF
Elizabeth Donoff
edonoff@hanleywood.com
202.729.3647

MANAGING EDITOR
Greig O'Brien
gobrien@hanleywood.com

ART DIRECTOR
Robb Ogle
rogle@hanleywood.com

EDITORIAL
**SENIOR EDITOR,
BUSINESS, PRODUCTS, AND TECHNOLOGY**
Wanda Lau

ART
SENIOR GRAPHIC DESIGNER
Megan Mullsteff

ASSOCIATE EDITOR, DESIGN
Sara Johnson

GRAPHIC DESIGNER
Ryan McKeever

**ASSISTANT EDITOR,
BUSINESS, PRODUCTS, AND TECHNOLOGY**
Selin Ashaboglu

MULTIMEDIA
VIDEO PRODUCTION MANAGER
Lauren Honesty

CONTENT PRODUCER
Chelsea Blahut

VIDEOGRAPHER/VIDEO EDITOR
Jim Van Meer

EDITORIAL INTERNS
Victoria Carodine
Symone Garvett

CONTRIBUTING EDITORS
Elizabeth Evitts Dickinson,
Bill Millard, Aaron Seward,
Mimi Zeiger

EDITORIAL ADVISORY BOARD

Gregg Ander, FAIA, IESNA • Francesca Bettridge, IALD, IESNA •
Barbara Cianci Horton, IALD • Kevin Houser, IESNA, EDUCATOR IALD •
Mark Loeffler, IALD, IESNA • Paul Zaferiou, IALD

SUBSCRIPTION INQUIRIES, CHANGE OF ADDRESS, CUSTOMER SERVICE, AND BACK-ISSUE ORDERS

ARCHITECTURAL LIGHTING
P.O. Box 3494
Northbrook, IL 60065
alit@omeda.com
Local: 847.291.5221
Toll-Free: 888.269.8410

PRODUCTION

PRODUCTION MANAGER
Marni Cocco
mccocco@hanleywood.com

AD TRAFFIC MANAGER
Pamela Fischer
pfischer@hanleywood.com

REPRINTS

Wright's Media
hanleywood@wrights
media.com
877.652.5295

LIST RENTALS

The Information Refinery
Brian Clotworthy
brian@inforefinery.com
800.529.9020

INSIDE SALES
AD TRAFFIC MANAGER
Annie Clark
aclark@hanleywood.com

archlighting.com

One Thomas Circle, N.W. Suite 600 Washington, DC 20005

A·L ARCHITECTURAL LIGHTING (Vol. 30, No. 6 USPS 000-846, ISSN 0894-0436) is published six times per year (Jan/Feb, March/April, May/June, July/August, Sept/Oct, Nov/Dec) by Hanley Wood, One Thomas Circle, N.W., Suite 600, Washington, DC 20005. Periodicals postage paid at Washington, DC, and additional mailing offices. Printed in the USA. Postmaster: Send changes of address to ARCHITECTURAL LIGHTING, P.O. Box 3494, Northbrook, IL 60065. Canada Post Registration #40612608/G.S.T. Number: R-120931738. Canadian return address: IMEX, P.O. Box 25542, London, ON N6C 6B2.

Distributed free of charge to individuals or firms engaged in the specification of lighting products in the U.S. Publisher reserves the right to determine recipient qualification. Per year, all other U.S. subscriptions \$48; Canada, \$60; Foreign, \$96. Payable in U.S. dollars. For subscription inquiries, address changes, and single-copy sales (\$10 in the U.S., \$15 in Canada, \$20 for other countries, payable in advance in U.S. dollars) write to ARCHITECTURAL LIGHTING, P.O. Box 3494, Northbrook, IL 60065 or call 847.291.5221 or toll-free 888.269.8410. For reprints, call or email Wright's Media: 877.652.5295 or hanleywood@wrightsmedia.com.

A·L ARCHITECTURAL LIGHTING is a trademark owned exclusively by Hanley Wood. Copyright 2016 Hanley Wood. Reproduction in whole or in part prohibited without written authorization.

Bring Your Design to Light

Design freely. From grand custom installations to elegant sleek luminaires, designers are energizing the OLED lighting experience.



OLEDWorks
Naturally Illuminating

OLEDWorks.com

Made with OLEDWorks High Brightness Lumiblade Panels
Installation by **Vision Quest** | Petal by **Visa Lighting**

The Light.



PANOS | Downlight

PANOS delivers unparalleled LED lighting quality, efficiency and precision with compound material construction inspired by space technology. Installation time is twice as fast as traditional downlights – no housing required.

zumtobel.us/panos

 **ZUMTOBEL**



Where technology and creativity come together

Whether you're looking for a source of inspiration or a reliable partner, Philips Lighting has the cost-effective, creative solutions you need to bring your lighting demands to life. Get the quality Philips portfolio of brands you've always trusted, with an approach that's unique and inspired by you.

innovation  you

Photo credit: Darius Kuzmickas

See more ways that we take light beyond illumination at philips.com/BeInspired

PHILIPS

DESIGN GROUP

GROUP PRESIDENT
Ron Spink
rspink@hanleywood.com
202.736.3431

GROUP EDITORIAL DIRECTOR,
DESIGN AND COMMERCIAL CONSTRUCTION
Ned Cramer

ADVERTISING SALES

VICE PRESIDENT,
GENERAL MANAGER OF DIGITAL
Christie Bardo
cbardo@hanleywood.com
202.736.3363

NATIONAL ACCOUNT MANAGER,
LIGHTING
Cliff Smith
csmith@hanleywood.com
864.642.9598

STRATEGIC ACCOUNT MANAGER,
MIDWEST
Michael Gilbert
mgilbert@hanleywood.com
773.824.2435

SENIOR ACCOUNT DIRECTOR,
MID ATLANTIC, SOUTHEAST
Susan Shepherd
sshepherd@hanleywood.com
404.386.1709

STRATEGIC ACCOUNT MANAGER,
WEST
Suren Sagadevan
ssagadevan@hanleywood.com
310.863.1153

NEW ACCOUNT SETUP
Jaeda Mohr
jmohr@hanleywood.com
202.736.3453

SENIOR ACCOUNT MANAGER,
CANADA
D. John Magner
jmagner@yorkmedia.net
416.598.0101, ext. 220

STRATEGIC ACCOUNT MANAGER,
CHINA, HONG KONG, TAIWAN
Judy Wang
judywang2000@vip.126.com
86.13810325171

NEW ACCOUNT SETUP
Erika Taylor
etaylor@hanleywood.com
202.380.3942

VICE PRESIDENT, MARKETING
Matthew Carollo

AUDIENCE MARKETING DIRECTOR
Diana Turco

HANLEY WOOD MEDIA

PRESIDENT, MEDIA
Dave Colford

VICE PRESIDENT,
PRODUCT DEVELOPMENT
Rizwan Ali

SENIOR VICE PRESIDENT,
AUDIENCE OPERATIONS
Sarah Welcome

EXECUTIVE VICE PRESIDENT,
STRATEGIC MARKETING SERVICES
Tom Rousseau

SENIOR DIRECTOR,
PRINT PRODUCTION
Cathy Underwood

VICE PRESIDENT,
CLIENT OPERATIONS
Mari Skelnik

SENIOR VICE PRESIDENT,
STRATEGIC MARKETING SERVICES
AND CONSUMER MEDIA
Jennifer Pearce

CHIEF DESIGN DIRECTOR
Aubrey Altmann

DIRECTOR OF ANALYTICS
Jennifer Malkasian

HANLEY WOOD

CHIEF EXECUTIVE OFFICER
Peter Goldstone

VICE CHAIRMAN EMERITUS
Frank Anton

CHIEF FINANCIAL OFFICER
Matthew Flynn

PRESIDENT, MEDIA
Dave Colford

PRESIDENT, DIGITAL
Andrew Reid

PRESIDENT, METROSTUDY
Christopher Veator

PRESIDENT, MARKETING
Jeanne Milbrath

SENIOR VICE PRESIDENT,
MARKETING
Sheila Harris

SENIOR VICE PRESIDENT,
CORPORATE ACCOUNTS
Ryan Flom

VICE PRESIDENT,
FINANCIAL PLANNING AND ANALYSIS
Ron Kraft

SENIOR VICE PRESIDENT,
CORPORATE DEVELOPMENT AND
GENERAL COUNSEL
Michael Bender

DIRECTOR OF SALES,
EMERGING ACCOUNTS GROUP
Philip Hernandez

VICE PRESIDENT,
CORPORATE CONTROLLER
Keith Rosenbloom

From Hanley Wood, publisher of ARCHITECT, AQUATICS INTERNATIONAL, BUILDER, CONCRETE & MASONRY CONSTRUCTION PRODUCTS, CONCRETE CONSTRUCTION, THE CONCRETE PRODUCER, CUSTOM HOME, THE JOURNAL OF LIGHT CONSTRUCTION, MASONRY CONSTRUCTION, MULTIFAMILY EXECUTIVE, POOL & SPA NEWS, PROSALES, PUBLIC WORKS, REMODELING, REPLACEMENT CONTRACTOR, and TOOLS OF THE TRADE magazines.

Disclosure: ARCHITECTURAL LIGHTING will occasionally write about companies in which its parent organization, Hanley Wood, has an investment interest. When it does, the magazine will fully disclose that relationship.

Privacy of mailing list: Sometimes we share our subscriber mailing with reputable companies we think you'll find interesting. If you do not wish to be included, please call us at 888.269.8410.



PHILIPS



PHILIPS



PHILIPS



PHILIPS



PHILIPS



PHILIPS



PHILIPS



PHILIPS



PHILIPS



Learn more
about our
brands

philips.com/BeInspired

*Available in US only

AL CELEBRATES 30 MOMENTS IN LIGHTING

- 14 **RICHARD KELLY'S THREE TENETS OF LIGHTING DESIGN**
- 16 **ESTABLISHMENT OF THE IALD**
- 18 **ESTABLISHMENT OF THE LIGHTING PROGRAM AT PARSONS**
- 20 **INTRODUCTION OF LEDS INTO THE ARCHITECTURAL LIGHTING MARKET**
- 22 **TM-30 IES METHOD FOR EVALUATING LIGHT-SOURCE COLOR RENDITION**
- 24 **DISCOVERY OF THE PHOTOSENSITIVE RETINAL GANGLION CELL**
- 26 **DAYLIGHTING**
- 28 **THE INFLUENCE OF JAMES TURRELL**
- 30 **ENERGY INDEPENDENCE AND SECURITY ACT OF 2007**
- 32 **THE LUMINOUS CEILING**
- 34 **THE SOLID-STATE ELECTRONIC DIMMER**
- 36 **THE ENERGY CRISES OF THE 1970S**
- 38 **FLUORESCENT LIGHTING**
- 39 **THE LIGHTING RESEARCH CENTER**
- 40 **NOBEL PRIZE FOR THE DISCOVERY OF THE BLUE LED**
- 41 **ESTABLISHMENT OF THE USGBC'S LEED PROGRAM**
- 42 **LOW-VOLTAGE LIGHTING**
- 44 **DEVELOPMENT OF THE ASYMMETRIC REFLECTOR SYSTEM**
- 44 **THE JEFFERSON MEMORIAL**
- 46 **TRANSFORMATION OF THE NIGHT**
- 48 **LIGHT POLLUTION AND THE NIGHT SKY**
- 50 **TRIBUTE IN LIGHT**
- 52 **THE DESIGNER-MANUFACTURER COLLABORATION**
- 54 **MERGERS AND ACQUISITIONS**
- 55 **THE CHANGING BUSINESS LANDSCAPE**
- 56 **LIGHTING TRADE SHOWS**
- 58 **MEDIA FAÇADES**
- 60 **"BRIDGE" TECHNOLOGIES**
- 61 **TEXAS HOUSE BILL 2649**
- 62 **ESTABLISHMENT OF A CREDENTIALING SYSTEM**

DEPARTMENTS

- 12 **COMMENT**
30 Moments in Lighting
- 72 **ONE-ON-ONE**
Industry voices through the years.

ARCHLIGHTING.COM

As always, check out our website for expanded article coverage, videos, and news. Also, subscribe to our email newsletter, AL Notes, and find a link to ARCHITECTURAL LIGHTING's digital edition.

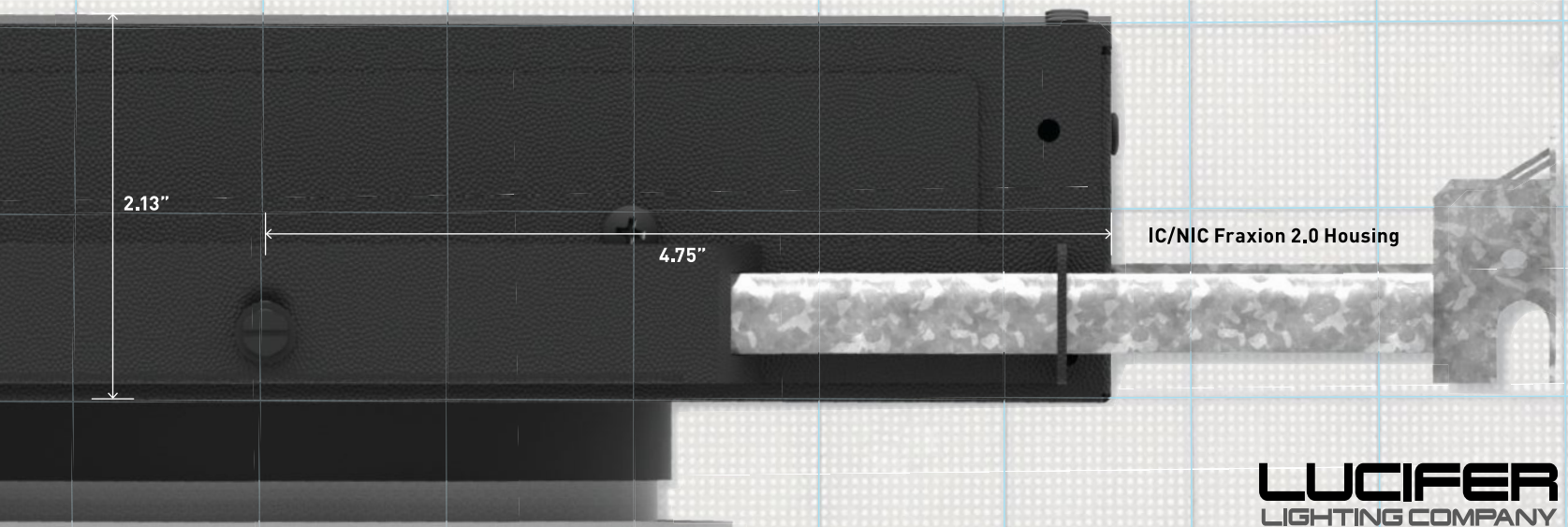
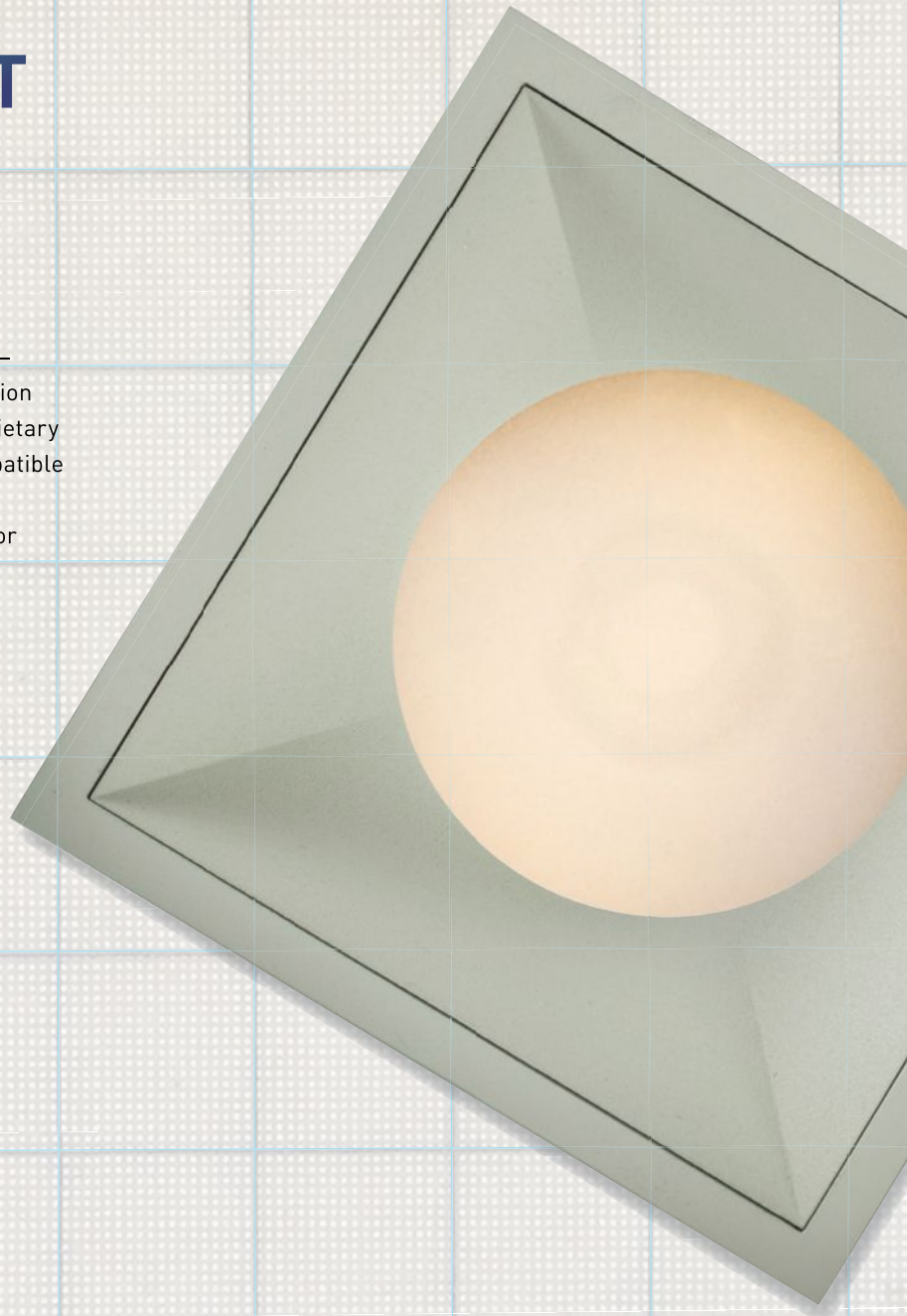
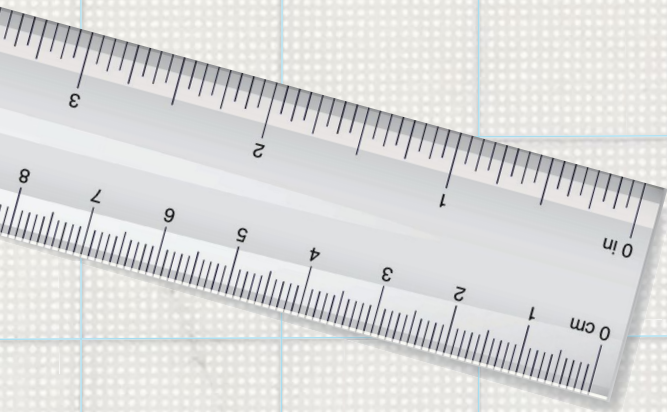
On the Cover: On the occasion of our 30th anniversary, we explore the play of light, form, and shadow through a specially commissioned photograph by Ania Wawrzkowicz.

FRAXION 2.0

THE MOST BRILLIANT THINGS COME IN SMALL PACKAGES.

Introducing Fraxion 2.0™, the shallowest family of LED fixed downlights, adjustable accents and wallwashers on the market—with all the options you expect from Lucifer Lighting. This precision engineered fixture offers highly flexible, field-changeable proprietary optics—from 15° to 85°—delivers up to 2600 lumens and is compatible with all driver types for a variety of dimming alternatives. Sleek, industrial design provides trimless and flange-overlay options for both IC and NIC ceilings to integrate seamlessly in architecture. Fraxion 2.0: a class of its own. PATENT PENDING.

luciferlighting.com



LUCIFER
LIGHTING COMPANY



Project: The Park – Shade Structures
Photographer: Ryan Linton
Landscape Architect: !melk
Architect: !melk
Lighting designer: Arup
Client: Marnell Companies
Design Director: Marnell Architecture

LIGHT DEFINES THE EXPERIENCE

Lighting designers Arup used Lumenbeam color changing luminaires, internally mounted and shielded with custom louvers to keep out of view through the structures' apertures, to light a unique installation on the Las Vegas Strip.

Find out more on lumenpulsegroup.com

30 MOMENTS IN LIGHTING



Thirty years doesn't seem like a long time, but when you consider all that has occurred in architectural lighting design since this publication was launched in November 1986, it's incredible how much has come to pass. This special 30th Anniversary issue presented an opportunity to think about lighting in a new way—in terms of the key moments that have contributed to shaping the contemporary practice of lighting design as we now know it.

On the following pages, you will find our attempt to look at all facets of the profession: design, manufacturing and business, technology and product developments, education, and research. This is not a list of a specific number of influential people, projects, or products. (That was in part how we approached the 25th Anniversary issue.) Instead, what you'll find on the ensuing pages is a different way of looking at lighting by connecting ideas and trends that have weaved themselves across the years and through each generation of lighting practitioners and manufacturers.

Determining which "30 moments" to pick and how to order them was a challenge. The organization of this issue stems from the many conversations and meetings I've had with all of you over the past 13 years. The information, knowledge, and experiences that you have shared with me personally, and with our publication, has been critical to ARCHITECTURAL LIGHTING's capacity to document the profession. ARCHITECTURAL LIGHTING and the lighting community have grown up in tandem.

Most importantly, this issue's list is not meant to be an endpoint, but a starting point. As I set out on this project, I was reminded, as I was when we prepared our 25th Anniversary issue, of the complexity involved in attempting to map out lighting design's significant moments. There is no single entity in the lighting community that serves as a historical repository for the profession's many accomplishments. Now, having gone through the process of putting together two anniversary issues, I am more convinced than ever that one of the critical tasks for the members of the lighting community

going forward is to document the industry's important ideas as well as the people, projects, and technologies that have made those ideas possible. It's time for the lighting community to build that repository and my challenge to all of you is this: Help ARCHITECTURAL LIGHTING continue this list. My goal is to expand it to include 100 moments, and I am eager to hear your thoughts on the "first draft" you'll find in this issue. What would you add? What would you omit? How would you change the order?

Over the course of the next year, as we celebrate this latest anniversary, we will be connecting with you on a series of special projects as we continue to expand the list and do a deep dive on each moment. It's not just critical for the practitioners of today but also for the next generation of lighting designers.

In my editor's comment for the 25th Anniversary issue, "Celebrating Light," I wrote: "I hoped you would spend some time with this issue and continue to provide your thoughts and opinions about who and what has influenced the profession, that it would be your homework in preparation for our 30th anniversary." My wish five years later is the same, I hope you will spend an equal amount of time with this anniversary issue, as you did with its predecessor. So, have you done your homework? I look forward to hearing from you. •

Elizabeth Donoff
Editor-in-Chief
edonoff@hanleywood.com

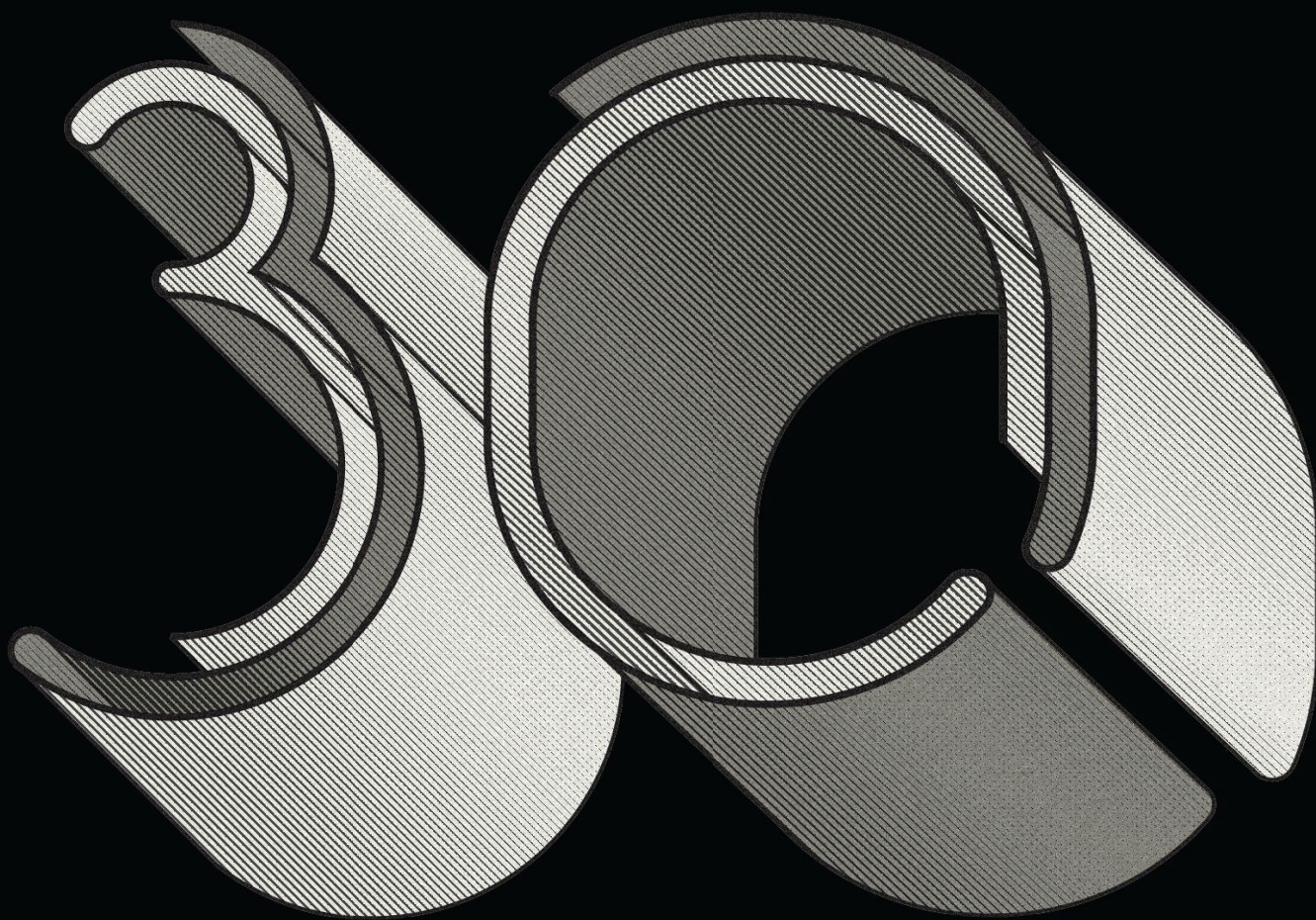
CONGRATULATIONS

A·L
ARCHITECTURAL LIGHTING

30 Years of
Publishing
Excellence

Looking forward to
"the next frontier"
with you





MOMENTS IN LIGHTING



RICHARD KELLY'S THREE TENETS OF LIGHTING DESIGN

Focal Glow. Ambient Luminescence. Play of Brilliants. Those three tenets from Richard Kelly (1910–1977) remain the core theoretical statement on lighting design. No other practitioner has ever articulated lighting design concepts in such a way. He formally presented these ideas in a lecture titled “Lighting as an Integral Part of Architecture” to a joint meeting of the American Institute of Architects, the Society of Industrial Designers, and the Society of Illuminating Engineers on April 23, 1952, in Cleveland. The lecture was later published in the *College Art Journal* (Vol. 12, No. 1) in 1952.

Kelly understood light’s ability to shape space and create a sense of visual awareness that could evoke a range of human emotions. Through his collaborations with architects Ludwig Mies van der Rohe, Louis Kahn, Philip Johnson, and Eero Saarinen, Kelly established a modern architectural lighting vocabulary that addressed the material palette of Modernism—glass, steel, and concrete—and the particular challenges these “modern” materials presented, most notably with reflection.

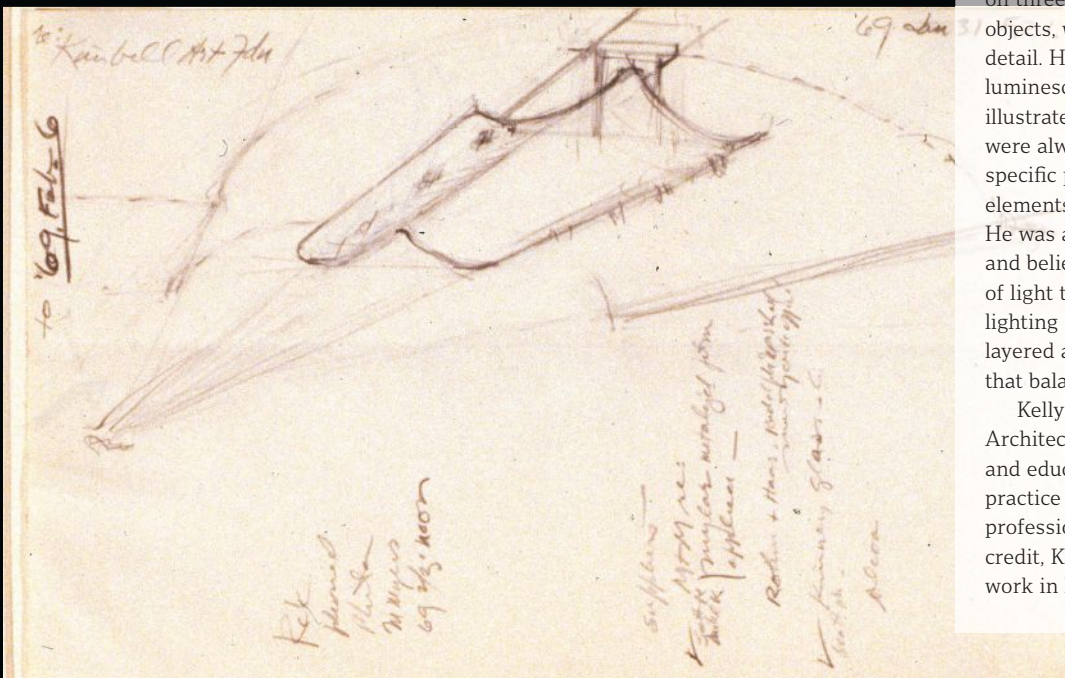
Kelly’s approach to lighting design centered on three principal techniques—highlighting objects, washing surfaces, and creating sharp detail. He used the terms “focal glow,” “ambient luminescence,” and “play of brilliants” to illustrate these ideas. These three techniques were always present in his work, although a specific project’s criteria might require one of the elements to be more pronounced than another. He was also an early proponent of daylighting and believed natural light to be the primary type of light that defines a space, and that electric lighting should serve a supplementary role. This layered approach to lighting created solutions that balanced both interior and exterior lighting.

Kelly trained at the Yale University School of Architecture. As an architect, lighting designer, and educator, he transformed the emerging practice of lighting design into a respected profession. With more than 300 projects to his credit, Kelly accomplished a prolific amount of work in his 40-year career. —Elizabeth Donoff



Right: Kimbell Art Museum, Fort Worth, Texas; constructed 1969–72; north galleries; Louis I. Kahn (1901–1974), architect

Bottom: Kelly’s sketch for the skylight design at the Kimbell Art Museum





ESTABLISHMENT OF THE IALD

Lighting design is a relatively young profession. Prior to 1969, there was no formal organization that represented the interests of lighting designers. The profession's early practitioners—people such as Lesley Wheel, David Mintz, Martin Garon, Howard Brandston, Ray Grenald, Jules Horton, Jim Nuckolls, Abe Feder, and Donald Gersztoff, to name a few—met regularly to discuss issues that were impacting them as individual designers trying to run a business and make a living. As Mintz recalls, the International Association of Lighting Designers (IALD) was born out of a discussion he had with Garon about the possibility of forming a group so that people could get health insurance at a reasonable cost. There was also the issue of establishing a standard contract that lighting designers could use for clients, and even maybe some type of license that lighting designers could use as a professional credential.

At the start of 1969, the group, now numbering 15, held its first formal meeting, a dinner at Luchows restaurant on 14th Street in New York City. A five-person committee was established to address the following items: What is the profession of lighting design? How does one define a professional lighting designer? And what might be the goals of an association of professional lighting designers?

In 1971, the group officially incorporated. Today, the IALD has more than 1,200 members around the world and a lineup of activities that includes annual conferences, award programs, education outreach, and liaising with the lighting manufacturing community. A lot has been accomplished since those first meetings, and there is still much more to be done, but the IALD has never wavered from its core mission: to represent the interests of the independent lighting designer. —E.D.



Celebrate the Past, Innovate the Present, Elevate the Future



ELEVATE

Visit us in 2017 at Lightfair International Booth 1425 & 1325

May 9-11 | Philadelphia, PA Convention Center



www.hubbellighting.com

HUBBELL
Lighting



PARSONS SCHOOL OF DESIGN

Parsons School of Design offers full and part-time programs leading to the MFA degree in Lighting Design. Applicants holding undergraduate degrees in Architecture, Environmental or Interior Design, Electrical Engineering, Theatre Design or other appropriate disciplines, as well as practicing professionals in the lighting field, are eligible to matriculate for this degree.

Requirements for the MFA in Lighting Design include the completion of a thesis project plus 45 studio/lecture credits in the following course areas:

*Survey of Lighting Design
Historical Perspective
Theatre Application (Studio) or
Architecture Application (Studio)
Illumination Engineering
Seeing Process: Physiology,
Psychology
Drafting and Specification
Calculations: Computer Applications
Electricity and Electrical Control
Light Sources
Utilitarian Luminaires
Decorative Luminaires
Lighting Application Studio
Colloquium
Associated Phenomena
Professional Practice*

Faculty members are distinguished practicing professionals, drawn from appropriate areas of the design and engineering fields.

*James Nuckolls, MFA, LALD,
Program Director
Sy Mayerson, Chair, Advisory
Committee*

Admission to the program is competitive and based upon the quality of an applicant's academic and professional achievement, as well as upon the presentation of a portfolio (where appropriate). Interviews are required of all applications living or working within a 250-mile radius of New York City.

*For further information,
appointments, a prospectus, or
application materials, contact:*

*The Lighting Institute
Parsons School of Design
66 Fifth Avenue
New York, NY 10011
212-741-5424*

MASTER OF FINE ARTS IN LIGHTING DESIGN

ESTABLISHMENT OF THE LIGHTING PROGRAM AT PARSONS

In autumn 2005, I walked through the doors of the Parsons School of Design as the new director of the Master of Fine Arts (MFA) Lighting Design program. I arrived with great enthusiasm for my commitment to full-time academic work, as well as significant naïveté about what lay ahead and, more importantly, what herculean work had already been accomplished by my predecessors who began this esteemed program at a time when the lighting design profession was still establishing its roots.

Lighting design education started at Parsons in the 1970s under the direction of the late James Nuckolls, a pioneer in lighting design education and practice. With no pre-existing academic models for lighting education, initial study at Parsons began through a framework of isolated design problems, or “projects.” These lighting projects evolved into formal classes in the mid-1970s and were offered in the evening through the Continuing Education Department.

In 1984, because of Nuckolls’ persistence, the classes that he had initiated became the basis for the first MFA in Lighting Design degree and the official establishment of the Lighting Design program. The program experienced a number of transformations in its first few years, not the least of which was the untimely death of Nuckolls in 1987. Despite the significant loss of the program’s founding visionary, lighting design education at Parsons continued its evolution with him in mind.

In 1996, even though the program still consisted primarily of evening classes, the Lighting Design program was moved from the purview of the Continuing Education Department to the Department of Architecture. In 1998, due to declining enrollment, the two-year MFA curriculum was replaced with a one-year (three-semester) Master of Arts (MA) curriculum. However, this change was short-lived due to compromises with intellectual depth and, in 2004, returned to the two-year, four-semester MFA format. Significant to this transition was the development of an entirely new program and, most notably, a migration toward daytime classes to align with other departmental programs and foster improved interaction between students and faculty. In the interest of

advancing these cross-disciplinary relationships throughout Parsons, the university initiated a substantial change to the administrative structure in 2008 when it disbanded its many siloed departments and consolidated them into five schools that aligned disciplines and areas of academic interest. This resulted in the merger of Architecture, Interior Design, Lighting Design, and Product Design into the School of Constructed Environments—an equitable alliance of disciplines that share interests in the design of the built world at all scales. Furthermore, this school structure positions the Lighting Design program as an equal to its peer disciplines.

Today, the MFA Lighting Design program enrolls an international roster of approximately 70 students across three master-level degree tracks. As I consider the early days of lighting education at Parsons and compare the work that James Nuckolls initiated to our teaching today, it’s easy to recognize the many changes that have taken place. These differences reflect the technological evolutions in contemporary practice and current trends toward complex, integrated design thinking, most of which are positive transitions that further validate the work that we do and the need for independent lighting practitioners. Despite these differences, there are core elements from the initial Parsons lighting program that remain fundamental to our teaching today. This includes a progressive vision toward professional preparedness—one that aspires to push forward the intellectual future of the profession in addition to teaching skills that are applicable today—and the recognition that lighting design is an established professional practice that has a substantial impact on the daily lives of people and, therefore, a responsibility to conduct our work in a qualitative, balanced manner with the well-being of the inhabitant in mind. I imagine Nuckolls would be proud of the advancements made at Parsons, and the lighting design profession more broadly, fully recognizing that there is always more work to do.

—Derek Porter, IALD, MIES, principal, Derek Porter Studio, New York and associate professor, Parsons School of Design, and director, MFA Lighting Program (2005–14)



INTRODUCTION OF LEDs INTO THE ARCHITECTURAL LIGHTING MARKET

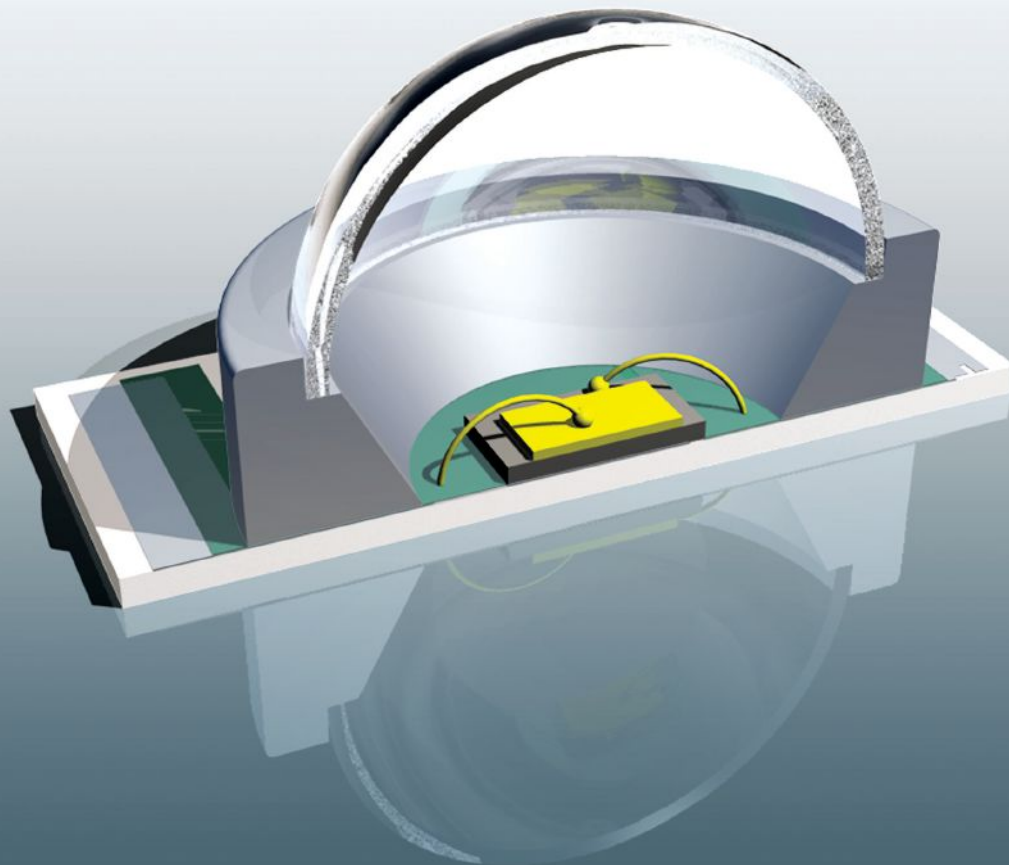
The introduction of LEDs into the architectural lighting design market has been a paradigm shift unlike any other the lighting industry has seen. And while it has been dynamic in terms of the possibilities that it affords designers and manufacturers for new design and technology, it certainly has been a disruptive force, and has caused the lighting community to rethink many of its assumptions about lighting.

The greatest challenge has been the rate at which solid-state lighting technology changes. LEDs have introduced an added level of complexity for designers and manufacturers who are trying to keep up to date with both new products and the new metrics developed, such as LM-79 and LM-80, that are now needed

to monitor and measure the new source's photometric performance.

Another challenge has been in form factor. The point source allows for slimmer fixture profiles, but early generations of luminaires didn't use that feature and instead just put LEDs in an existing housing. LED luminaire design has come a long way in the past decade, and the current generation of products now reflect a high level of color rendering and control capabilities.

And then there's the financial impact. A 2011 McKinsey report, "Lighting the Way: Perspectives on the Global Lighting Market," estimates that "the LED lighting market will amount to \$9.1 billion by 2020—close to 60 percent of the overall lighting market." —E.D.



whitegoods



0.7" Linear Plaster-in



2.4" Round Plaster-in



Mini Z Cove



Mini Edgeless Cove



2.4" Linear Plaster-in



Whitegoods sets the standard for minimal lighting through reduction of detail. Our modular system allows unrivalled flexibility and seamless architectural integration. Coordinated family of products which can be tailored specifically to your needs.

inter•lux
tools for lighting

inter-lux.com/whitegoods
answers@inter-lux.com



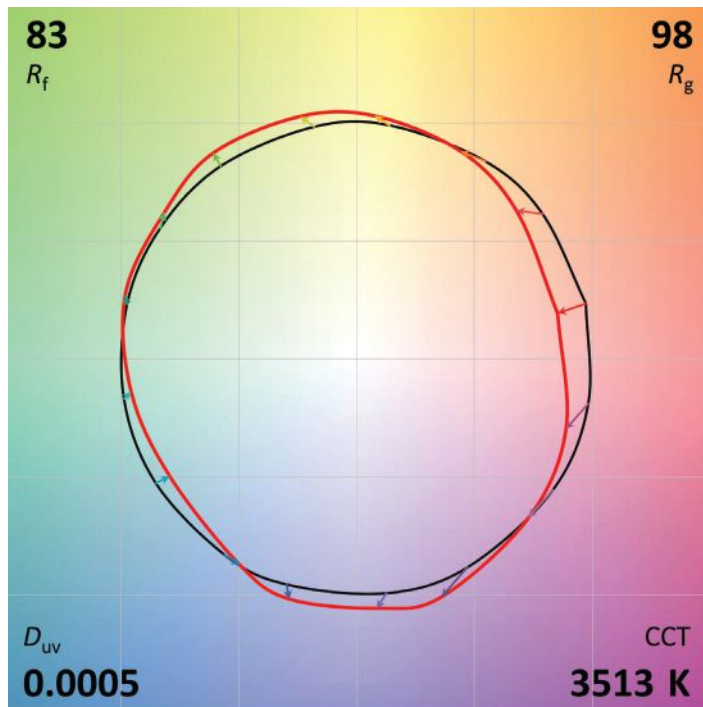
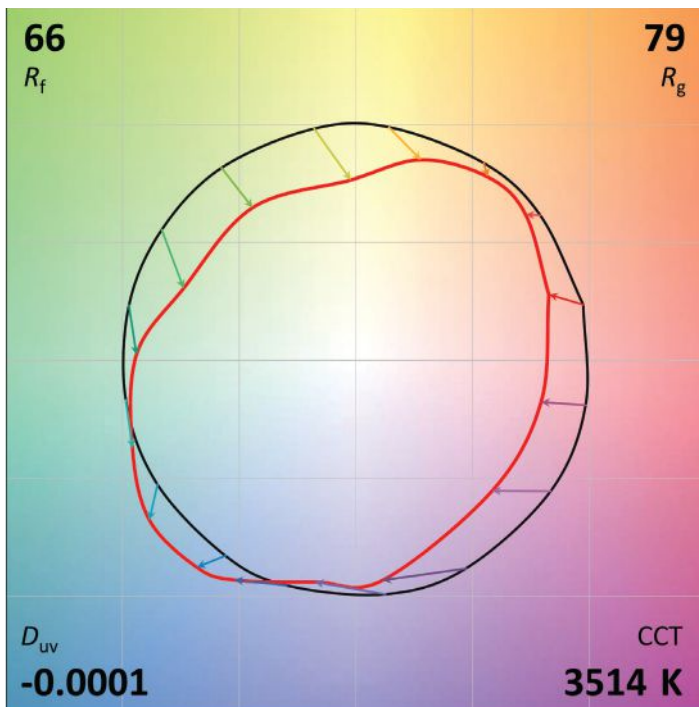
TM-30 IES METHOD FOR EVALUATING LIGHT-SOURCE COLOR RENDITION

The much maligned Color Rendering Index (CRI) has proved an inadequate tool for professional designers fixed on a discerning consideration of light-source color rendering capabilities. Although useful, color fidelity as defined in the CRI system is, at its best, only a part of what is needed to adequately assess color rendering. At its worse, it is a misleading indicator of color rendering. The Illuminating Engineering Society's (IES) TM-30 color fidelity metric (R_f) is a significant improvement over CRI. Its use of 99 color samples, a more-uniform color space, and calculations more fitting and expressive of real-world conditions are confident steps forward. However, taken singularly, this advance alone does not provide the comprehensive insight needed to fully consider color rendering. TM-30's addition of a color gamut metric (R_g), however, delivers an accounting of a light source's saturation. When used with the procedure's color distortion icon (two, shown)—a saturation

"fingerprint" of sorts—an understanding of how a light source will reveal color is heightened.

With the emergence of solid-state lighting, we now have the capability to manipulate a source's spectral content in a manner that was not previously practical. With the arrival of multicolor emitter arrays and other blended LED source options, white light and its color rendering abilities can be structured to a specific project need. Manufacturers can use TM-30 as a tool to develop new sources, further increasing options for designers and end users.

There is still much to learn about the potential impacts, both purposeful and unintended, of spectral shaping. Diligence must be exercised so as not to alter the spectrum in a way that expresses an intellectual dishonesty in revealing color reality. Just how that boundary is defined is open to spirited debate. —Randy Burkett, FIALD, FIES, president and design principal, Randy Burkett Lighting Design, St. Louis



The defining line.



The Define series by Neo-Ray exemplifies the power of minimalism.

Define your architectural space with the clean, seamlessly integrated lines of the Neo-Ray Define series. Powered by Eaton's most advanced LED technology the Define offers configurable widths ranging from 1" to 5" that can be tailored to the nearest foot. Suspended, surface, wall mount and recessed installation options, coupled with robust construction and modular components make the Define the ideal choice for beautifully minimalistic lighting designs. Eaton.com/define.



Powering Business Worldwide

Follow us on social media to get the latest product and support information.





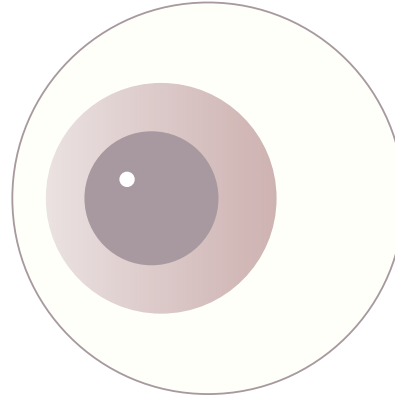
DISCOVERY OF THE PHOTSENSITIVE RETINAL GANGLION CELL

In *The Art of Scientific Investigation*, (W.W. Norton, 1950), W.I.B. Beveridge writes that the reception of an original contribution to knowledge can be divided into three phases. First, it is ridiculed as untrue, impossible, or useless. Second, people then acknowledge that there may be something to the idea, but declare it would never be of any practical use. Third and finally, when the discovery has received general recognition, people say that the idea is not original and had been anticipated by others.

The reception of the newly discovered intrinsically photosensitive retinal ganglion cell (ipRGC) in the mammalian retina was no different. What is now considered general knowledge was ridiculed in the early 1990s. Russell Foster, a scientist at Imperial College in Great Britain, recounts how he was practically thrown out of a meeting room when he presented his results showing that animals with no functional rods and cones (the two types of photoreceptors in the human retina) were still able to shift the timing of their wheel-running activity in response to a light pulse. Vision scientists refused to accept that they had, for 100 years, missed a class of photoreceptor in the eye. In 2002, Brown University scientist David Berson found the last piece of the puzzle: an entirely new class of photoreceptor, the ipRGC.

Studies were performed to better understand how the ipRGC responded to light and how it interacted with rods and cones. It is now well established that the ipRGC is sensitive to short-wavelength (blue) light and, although it is the main conduit of light signals from the retina to the brain, that it receives processed input from rods and cones. Simply put, the science surrounding the ipRGC led to a paradigm shift in how lighting is measured, manufactured, specified, and applied.

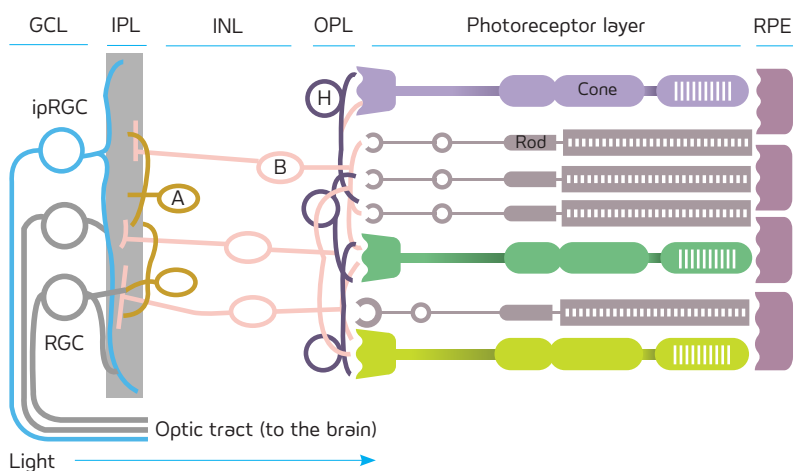
Based on this new knowledge, we at the Lighting Research Center (LRC) proposed a model of human circadian phototransduction (the means by which the retina converts light signals into neural signals for the circadian system) to quantify circadian effective light. The model is constrained by the neuroanatomy and neurophysiology of the human retina; the ipRGC is central to the model but not synonymous with



the model. A new way of quantifying light's impact on the circadian system called circadian stimulus (CS) allows one to predict how different spectral power distributions and light levels will suppress the hormone melatonin at night. We also developed the Daysimeter, a personal sensor that is calibrated to measure CS in the field. We have been working with the National Institutes of Health, the General Services Administration, the National Institute of Occupational Safety and Health, among others, to quantify the impact of CS on sleep quality and quantity, performance, fatigue, mood, and behavior in various populations, including older adults with Alzheimer's disease, office workers, and cancer patients. We have also formed a Light and Health Alliance with a group of manufacturers to inform them of this new research. Finally, we are developing lighting patterns that will serve as tools for designers to learn how to implement 24-hour lighting schemes to promote circadian entrainment in the built environment.

Researchers, even the vision scientists, now believe ipRGCs are real. However, the application of this knowledge into lighting practice is still in Beveridge's second phase. Lighting designers, manufacturers, and users embrace the idea that lighting isn't just for vision, but lighting professionals are still struggling with how to implement the knowledge. For example, static, warm-color lighting systems installed in a ceiling are not necessarily going to be the optimal

Detail of Retina in the Human Eye



solution for circadian entrainment in schools and offices. Personalized, dynamic lighting delivered at the occupants' desks would be more effective although portable, dynamic plug-in products are not yet widely available. When delivering light, designers should measure vertical light levels instead of horizontal footcandles on the workplane. Designers also need to specify not only when to deliver light, but when to deliver darkness. Undoubtedly, the ipRGC discovery resulted in a paradigm shift in science, but the application of this knowledge to lighting will only be fully embraced when that discovery is thought to have been obvious all along.

—Mariana G. Figueiro, Light and Health program director, Lighting Research Center, and professor, Rensselaer Polytechnic Institute, Troy, N.Y.

Introducing LSI's Mirada LED Lighting Series

Architectural LED Fixtures with Precision Silicone Optics

- High-performance, precisely-molded silicone optics with scratch resistance and no discoloration over time
- Industry-leading LSI photometry through a patent-pending LED optical system
- Contemporary stylings well-suited for architectural applications

LSI Industries Inc.
10000 Alliance Road
Cincinnati, Ohio 45242

Contact us today!
www.lsi-industries.com
Phone 513.793.3200
Fax 513.793.0147







DAYLIGHTING

The Pantheon in Rome. The Sir John Soane House Museum. The Kimbell Art Museum in Fort Worth, Texas. These three projects represent seminal examples of daylighting that serve as benchmarks for both architecture and lighting.

The Pantheon, originally built as a Roman temple, now a church, was completed under the emperor Hadrian in approximately 126 A.D. The circular building features a Corinthian column portico and a rectangular vestibule that leads to the rotunda. This space, with an oculus opening to the sky in the concrete dome (shown), is one of the purist expressions of natural light entering a building and illuminating a space. Measuring 43.3 meters (142 feet) tall and wide, the Pantheon's structure remains the largest unreinforced concrete dome in the world.

Sir John Soane (1753–1837) was enamored with light, considering it an essential building material. He developed a number of innovative daylighting systems using skylights, mirrors, and concealed lamps in his London home at 12-14 Lincoln's Inn Fields (now the Soane Museum) that served as his laboratory. The breakfast room, for instance, features an octagonal skylight with colored-glass panels and two side skylights. Strategically placed mirrors reflect the colored light. Soane's experimentation goes well beyond just bringing natural light into a room but how, through its manipulation, light can craft space and create atmosphere.

A modern tour de force of the unification of architecture and illumination was realized in the Kimbell Art Museum in 1972. A collaboration between architect Louis Kahn and lighting designer Richard Kelly, the skylight design features a curved reflecting screen made of perforated anodized aluminum that distributes a "silvery" light evenly across the cycloid curve of the ceiling and only allows indirect sunlight to come in contact with the artworks. (Downlights provide supplementary illumination when needed.) Kelly also worked with engineer Isaac Goodbar from lighting manufacturer Edison Price, who devised a computer program to determine the reflector's curve, one of the first uses of computer technology in either architecture or lighting design. —E.D.



THE INFLUENCE OF JAMES TURRELL

Long before the 2013 trio of blockbuster exhibitions in New York, Houston, and Los Angeles, many lighting designers had experienced the work of James Turrell, a key figure in the “Light and Space” art movement of the 1960s, for the first time in museums. His early installations were undeniable demonstrations of the potential of light to create powerful and new perceptual experiences and they paved the way for more ambitious architectural lighting design solutions throughout the built environment.

By framing a view of the sky, viewers of Turrell’s Skyspaces, such as *Meeting* (1980-86/2016) at MoMA/PS1 in New York (shown), perceive shifting environmental conditions with no spatial depth. Eliminating cues of distance and scale, Turrell presents a familiar composition of passing clouds against the sky as a flattened picture, causing us to question our assumptions about the most common of lighting conditions: daylight. At dusk, a linear warm-white light source concealed behind the high bench back softly illuminates the frame of the ceiling aperture. By illuminating the Skyspace interior with a complementary color, the viewer’s perception of the shifting color of the sky is intensified as they watch the sky transform from a pale blue to a deep indigo and finally to an inky black.

Alternatively, Turrell’s wall aperture pieces, such as the Space Division Constructions he began in 1976, use light to create a disorienting spatial experience: the space beyond a rectangular aperture in the end-wall of an enclosed gallery appears infinite. Turrell creates the effect by placing a series of diffuse sources on the back surface of a knife-edge aperture, detailed so the sources remain hidden. Once the viewer’s eyes adapt to the dark environment, an illusion of infinite depth becomes visible.

Many artists have influenced lighting designers, but Turrell introduced the practice to a new way of seeing. His immersive Skyspaces and wall aperture installations created a framework for optical experiences that forever changed the way we view and experience the medium of light. —Glenn Shrum, IALD, MIES, founder and principal, Flux Studio, Baltimore, and director and assistant professor of Lighting Design, Parsons School of Design, New York

The Museum of Modern Art, New York. Photograph: Peblo Enrique



Halo...

Architectural meets decorative lighting.

Design by Martín Azúa.



Visit www.vibia.com to discover, create and inspire.

 facebook.com/vibia.light  twitter.com/#VibiaLight

VIBIA, INC. 272 Fernwood Ave. Edison, NJ 08837. P. 732 417 1700. F. 732 417 1701. sales@vibialight.com

VIBIA
LIGHT IS CREATION



ENERGY INDEPENDENCE AND SECURITY ACT OF 2007

On Dec. 19, 2007, President George W. Bush signed into law the Energy Independence and Security Act (EISA) of 2007 (HR6). The bill implemented some of the most sweeping energy initiatives since the oil embargoes of the 1970s, including the setting of higher fuel-economy standards for cars and light trucks and new efficiency requirements for households and government buildings.

Although the law's principal focus was not directed at lighting, two of its provisions did have a major impact. First, the law moved to introduce energy-efficient lighting measures by 30 percent, leading to a phaseout of traditional general-service incandescent and halogen light sources from 2012 to 2014. And, like all rules, there were exceptions: A long list of specialty lamps such as traffic signals and infrared were excluded. The second provision that impacted lighting, which halted the production of 150W to 500W probe-start metal halide magnetic ballasted fixtures, went into effect at the beginning of 2009.

EISA's promotion of research and innovation was also significant. It established the Bright

Tomorrow Lighting Prize, also known as the L Prize. The competition, launched in 2008 by the federal government, encouraged the implementation of high-performance, energy-efficient lighting with a specific focus on solid-state lighting. The competition had three categories: 60W incandescent replacement lamps, PAR38 halogen replacement lamps, and the Twenty-First Century Lamp Prize, which called for the development of an LED replacement lamp that attained 150 lumens per watt or better. In the end, the U.S. Department of Energy (DOE) only moved forward with the competition for the 60W replacement.

On Aug. 3, 2011, the DOE announced that Philips Lighting North America had won the L Prize. The \$10 million purse included a federal contract purchasing agreement. Philips introduced the prize-winning lamp in early 2012 to market. Since then, a number of lighting companies have introduced A19 LED replacement lamps, pushing the price point below the critical \$10 threshold. —E.D.

Legend

- 1 Philips Soft White 100W incandescent
- 2 Lighting Science LED Light Bulb
- 3 Philips L Prize lamp
- 4 GE Energy Smart 9W A19 LED replacement lamp
- 5 Sharp LED Bulb
- 6 Samsung 13.5W LED A19
- 7 Cree 9.5W LED 60W replacement lamp



elliptipar®

asymmetric luminaires

SOLVING FOR ANTONIO
SOLVING FOR LIGHT

$$\frac{X}{Y} = \frac{\text{Without Limits}}{\text{Within Budget}} = Q$$



SOLVING FOR LIGHT

$$\frac{X}{Y} = Q$$

SOLVING FOR EDWARD
SOLVING FOR LIGHT

$$\frac{X}{Y} = \frac{\text{Feature Visibility}}{\text{Fixture Invisibility}} = Q$$



SOLVING FOR MARCUS
SOLVING FOR LIGHT

$$\frac{X}{Y} = \frac{\text{Creativity}}{\text{Code}} = Q$$



tambient®

task ambient luminaires

TMS SHOWN
AND EDWARD SHOWN
AS ORDERED SEPARATELY

L306 DUAL SIDED
CENTERED ARM

SOLVING FOR AYANA
SOLVING FOR LIGHT

$$\frac{X}{Y} = \frac{\text{Aesthetics}}{\text{Efficiency}} = Q$$



THE LIGHTING QUOTIENT®

www.TheLightingQuotient.com





The Vode RaceRail™ suspended LED is remarkably adaptive. With rails that rotate infinitely and lock at any angle, and drivers that can be placed 100 feet away and dim to 1%, **it's more than OK.**



THE LUMINOUS CEILING

Today, luminous surfaces are an often-seen design move. But in the 1940s and 1950s, particularly in the United States, the concept and implementation was rarely seen. But all of that changed with the luminous ceiling at the Seagram Building in New York.

The ceiling was a collaboration between the Seagram's design team—architects Ludwig Mies van der Rohe and Philip Johnson, and lighting designer Richard Kelly—with lighting manufacturer Lightolier and that company's lead designer Noel Florence. In *The First 100 Years: A History of Lightolier* (Lightolier, 2004), Daniel Blitzer recounts his father, William Blitzer, and Florence explaining that the desired panel size was larger than anyone knew how to produce at the time. Florence had developed a vacuum-formed diffuser in a frame to show to the Seagram team. They liked it, awarded Lightolier the job and requested a larger on-site mock-up. But that demonstration revealed surface buckles. Not wanting to lose the job, Florence revisited his design and figured out a way to stretch rigid vinyl by heating it to eliminate the irregularities.

The luminous ceiling became one of the signature features of the building, and cemented Lightolier's place in architectural circles as a leading manufacturer of architectural luminaires. Its also symbolic of the designer/manufacturer collaboration, which has been so critical to the practice of lighting design. —E.D.

© Ezra Stoller/Esto

COMPLETE FAMILY OF INTERIOR
AND EXTERIOR COLUMNS,
BOLLARDS, PENDANTS AND WALL
TO ENHANCE YOUR ENVIRONMENT

LUMISTIK

SCALED TO FIT

PENDANT

WALL

BOLLARD



**LUMINIS**[®]

www.luminis.com



THE SOLID-STATE ELECTRONIC DIMMER

Lighting without lighting controls would be like trying to drive a car without a steering wheel. It's one of the most important areas of illumination technology, and its development continues to evolve to meet the challenges of today's solid-state lighting advances. But no matter the control device or suite of sensors and digital readouts, lighting controls would not be what they are today without the contribution of Joel Spira (1927–2015), chairman and founder of Lutron Electronics and his invention of the solid-state electronic dimmer.

Spira's idea first came to him while serving in the Navy during World War II. Tasked with designing a trigger for an armament, he tried assembling a switch relay which shattered. A colleague showed him a silicon-controlled rectifier (SCR), an electronic device no bigger than a pea. Seeing how the SCR could harness a lot of power, he wondered if it could be used to control an incandescent lamp.

Spira went on to create the first electronic solid-state dimmer in 1959 and established Lutron Electronics in 1961 to sell his invention.

The Capri dimmer (above left)—with its tunable dial—was the first dimmer Lutron brought to market in the early 1960s. Controlling a light via dimming opened up the opportunity for tremendous energy savings.

But it was the Nova (above right), the first linear slide dimmer introduced in 1971, that was perhaps even more revolutionary. The device's slide interface was novel and Nova could accommodate power inputs of up to 2,000W. The product was so well received that Spira expanded the line so that it could be used for all light sources. Amazingly, looking at a Nova slide dimmer today, the interface seems so contemporary that you'd be hard pressed to know if what you're looking at is an original or something released this year. In 2010, Lutron donated several items from its 50-plus-year history to the Smithsonian's National Museum of American History in Washington, D.C., where it has become part of the museum's Electricity Collection—a testament to Spira's contribution to not just lighting but lighting history, invention, and entrepreneurship. —E.D.

Architectural Lighting turns 30!

30 years! Wow! NoUVIR has only been changing the world for 25.

30 years is roughly a million footcandle hours for the average museum artifact.

Conventional lighting is why Marilyn's 60-year-old red dress isn't as red as it once was. Now lit with NoUVIR, this dress will be exactly this same color in another 60 years. Pure-white, stone-cold fiber optic lighting with no UV and no IR... only from NoUVIR!



Steakhouse, Jamul Casino, San Diego, CA. Photo © 2016 NoUVIR LIGHTING.

*Perfect aim. Perfect focus. Perfect color.
Perfectly safe for art and artifacts.
For 25 years the perfect choice has been...*

NoUVIR® LIGHTING!

302 628-9933

www.nouvir.com

LIGHT SOURCE	U.S. D.E. BLUE WOOL GREEN	CHROME YELLOW BLACK	EXHIBIT CASE	AVERAGE COLOR FADING	
DIRECT SUNLIGHT	100	100	50	50	70%
COOL-WHITE FLUORESCENT	90	80	20	60	68%
2900°K INCANDESCENT	100	90	20	60	64%
WHITE LED	90	60	10	50	43%
NoUVIR FIBER OPTIC LIGHTING	25	20	0	40	21%
REM FILTERED NoUVIR LIGHTING	0	0	0	5	1%

Published fading tests prove that even materials deemed too fugitive to exhibit (ISO#2 blue wool and similar color samples) are safe from fading with NoUVIR, even after 250,000 footcandle hours! Call us or go to www.nouvir.com for hard conservation science and practical lighting solutions.*

* Miller, R.E., *Reflected Energy Matching as a Conservation Tool*, 2003, pg.15



THE ENERGY CRISES OF THE 1970S

The energy crises of the 1970s changed the way we think about natural resources, inspired environmental advocacy, and laid the ground work for government oversight with the establishment of the Department of Energy in August 1977.

But seeds of environmental awareness had already taken root. Rachel Carson's seminal 1962 book *Silent Spring* raised public awareness about the environment, and the first U.S. Earth Day was held on April 22, 1970. Twenty million Americans rallied from coast-to-coast demonstrating for a clean environment. Earth Day 1970 also pushed the creation of the United States Environmental Protection Agency (EPA).

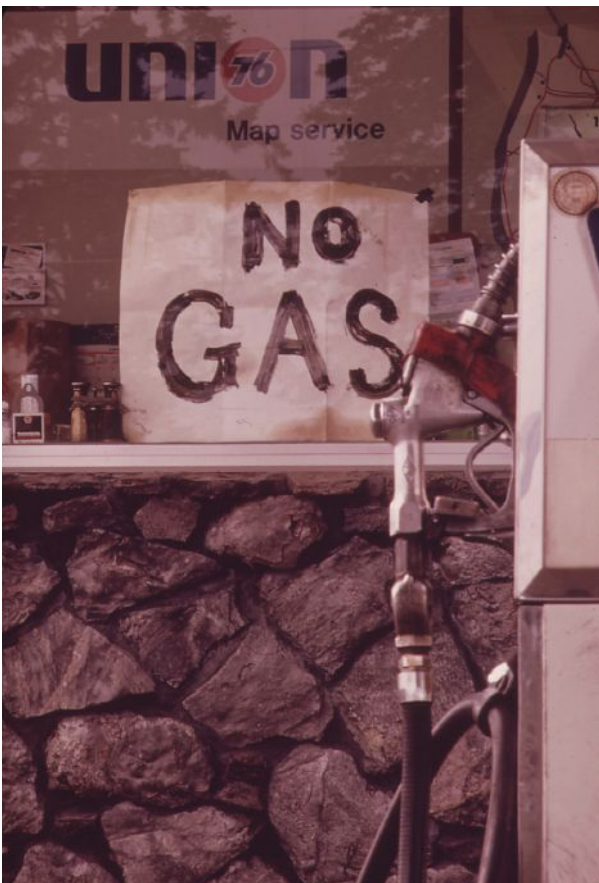
The same year, the federal Clean Air Act of 1963 was amended, giving the EPA the authority to set air quality standards and control emissions.

But it was the Energy Crisis of 1973–74 that served as the real wake-up call for most Americans. On Oct. 17, 1973, the Organization of Petroleum Exporting Countries (OPEC) instituted an embargo that reduced the amount of oil produced and sold to the United States. Up to that point, Americans had been used to abundant access to cheap resources such as gasoline—even though U.S. domestic oil production had been in decline, imports had increased to maintain the low prices. The embargo, however, created gas shortages, led to rationing and long lines at gas stations, and made gasoline more expensive. Although the embargo was finally lifted in March 1974, oil prices remained high. The crisis also resulted in the establishment of a national speed limit as well as the Energy Policy and Conservation Act of 1975 and the creation of the Department of Energy by the Carter administration. The overthrow of the Shah of Iran by the Iranian Revolution led to a second oil crisis in 1979. Instability in the Middle East led to decreased oil output and world supply.

The energy crises also impacted the way spaces were designed and lit. Prior to the 1973 oil embargo, commercial interiors were typically illuminated with bright ceilings and fluorescent lamps. But as electricity prices increased, facility managers removed lamps, disrupting lighting layouts and damaging ballasts and fixtures. The result was unevenly lit spaces. Designers countered by utilizing more tasklighting and returning to daylighting strategies.

Manufacturers introduced products that were more energy efficient with names that spoke to a more energy-conscious population. General Electric introduced the "Watt-Miser," Philips introduced the "Econowatt," and Sylvania debuted the "SuperSaver." These energy-saving lamps reduced the wattage of a 4-foot linear fluorescent from 40W to 34W.

Electric and utility companies also introduced incentive programs to encourage customers to install and use more efficient equipment and lamps as a move toward reducing overall electricity consumption. —E.D.



EF600 SYSTEM

Surface Mounted Asymmetric LED Uplight

Semi-Specular
Reflector

Protective Lens

LED Board with 3
Power Levels

Adjustable Light Shield

1.25"

4.00"

EF600 Features

- LED source available at three power levels up to **1200 Lumens per foot**
- Backlight Shield for variable adjustment of distribution
- Advanced Optics with asymmetric distribution
- Dense Pitch for uniform output
- Integral semi-specular reflector
- Captive lens for horizontal or vertical mounting
- Tight binning ensures color consistency within 2 MacAdam Ellipses
- Field-Replaceable integral LED driver
- Integral wiring compartment and thermal protection
- Quick disconnect through wiring
- Hinged joiners for following contoured coves
- Long continuous runs with a single feed

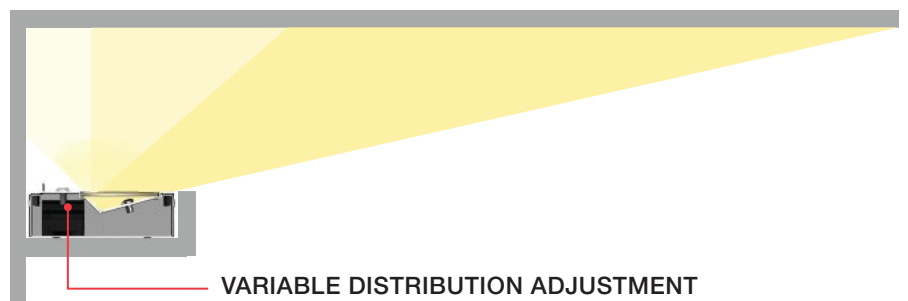
Distribution Per 4' Fixture

Total Output: 3328 lm

Efficacy: 100 lm/w

CRI >80

The EF600 from LF Illumination, is a complete linear cove / surface mounted lighting system. Available in fixed lengths from 2' to 8', the fixtures may also be ordered in custom lengths. The small 4" wide x 1.25" high footprint ensures that the EF600 will fit into the tightest of mounting spaces. A unique feature to the EF600 is the adjustable light shield. This provides variable distribution for different applications. The shield is easily adjusted at the top of the fixture. Position markers are present to assure consistent placement of the shield in longer runs.





RECESSED
MOUNTING




5 years
Warranty

LED ARCHITECTURAL TROFFER

2'X2'(24W/30W/36W)

2'X4'(36W/40W/45W)

AC100-277V, Flicker Free

EFFICACY
140lm/W



50,000 hrs
Lifespan




ON OFF
1-10V DIMMING

- * LEDs, SMD2835 (LM80)
- * Wide Beam Angle of 110
- * Excellent Heat Dissipation Performance
- * PC cover of UV Resistance And High Transmittance



HONGLI ZHIHUI
鸿利智汇集团股份有限公司
stock code: 300219



LEDIA
萊帝亞照明

Guangzhou LEDIA Lighting Technology Co., Ltd

Factory Add: 1 Xianke 1st Road, Huadong Town, Huadu Dist., Guangzhou, China

E-mail: info@ledialighting.com

Tel: +86-20-37706057

US Add: 8 Bond St Ste 301 Great Neck, NY11021

US SALES OFFICE: QUICK RESPONSE & INSTANT SERVICE

E-mail: info@ledialighting.com

US Tel: +1-516-504-8000

www.ledialighting.com



FLUORESCENT LIGHTING

Fluorescent technology helped lighting to enter the modern age. The first patent for a fluorescent lamp was filed on April 22, 1936, by George E. Inman of General Electric (GE) Lighting. Inman and co-inventor Richard Thayer headed a research group at GE's Nela Park laboratories outside of Cleveland. A second GE research group, under the direction of Philip J. Pritchard, was established to develop the equipment needed to manufacture these new lamps; other groups in the company were called on to develop the appropriate ballasts and circuit design.

At the same time, other U.S. manufacturers such as Westinghouse and Sylvania had also started to research fluorescent technologies, as had European lighting manufacturers such as Dutch company Philips. In 1939, the fluorescent lamp was publicly displayed by GE at the New York World's Fair (shown) and by Westinghouse at the Golden Gate Exposition in San Francisco. Linear fluorescent lighting technology evolved from T12s and T8s to today's T5s and T5HOs. LED replacements for fluorescent have yet to prove themselves, and for a number of lighting applications, fluorescent remains a viable option based on performance, lamp-life, and cost. —E.D.



Wurts Bros. (New York, NY.) / Museum of the City of New York.
X2010.7.1.14279



THE LIGHTING RESEARCH CENTER

When the Lighting Research Center (LRC) was founded in 1988, independent lighting research was largely nonexistent and lighting education was conducted by a disparate handful of enthusiastic professors teaching undergraduates. As one lighting professor retired, that brand of education retired as well because there was no one else at that university interested in lighting. Like education, lighting research was usually led by single enthusiasts working at a university or at a national research laboratory, like I did at the National Research Council (NRC) of Canada. There were very few nonmanufacturer research laboratories devoted to lighting with more than one person; I can only think of two, the Building Research Establishment in the United Kingdom and the Lawrence Berkeley National Laboratory in the United States. Perhaps most seriously, there were no graduate education programs in lighting anywhere in the world that could produce the next generation of academics and researchers. Everyone came to lighting, as I did, from disciplines outside of lighting. Without successive generations of thought leaders, lighting could never be more than a trade.

Since the LRC and our graduate program at the Rensselaer Polytechnic Institute in Troy, N.Y., were founded, independent lighting research and education have become much more common. Today, there are more than 10 universities across the globe that grant degrees directly related to lighting. Collectively, our institutions are transforming lighting from a trade to a field.

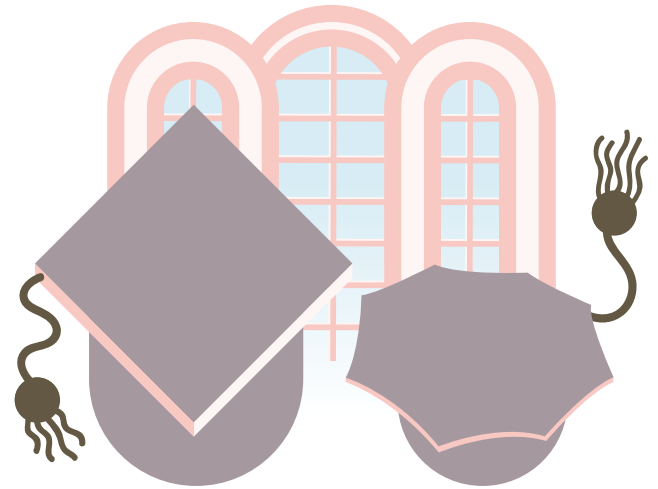
Starting the LRC was a significant challenge. Fred Heller, former CEO of Genlyte and a member of my Director's Council, pointed out that the lighting industry spent less than 0.5 percent of its revenue on research, in sharp contrast to other industries. Pieter von Herrmann, a former GE executive, advised me not to give up my NRC job to become director of the LRC because, as he rightly pointed out, there was no more than \$250,000 in total that the industry would spend on independent lighting research each year.

What I quickly learned was that funding for lighting research and education was not going to come from the people who make good lighting, but rather from the people who need

good lighting. Organizations that support our research and educational activities today include the General Services Administration, the Federal Aviation Administration, the United States Navy, the U.S. Department of Energy, the U.S. Environmental Protection Agency, the National Institute for Occupational Safety and Health, the National Institutes of Health, the New York State Energy Research and Development Authority, Natural Resources Canada, and the Swedish Energy Agency. Today, our outside funding is slightly more than \$6 million per year, 85 percent of which comes from the people who need good lighting. The lighting industry is now investing about \$900,000 per year in the LRC; this is about twice the amount, in 1988 dollars, that Pieter von Herrmann said was available from the entire lighting industry for independent lighting research.

The LRC is a diverse group of men and women devoted to its mission: "To advance the effective use of light for society and the environment." I believe that devotion is also held by lighting researchers and educators around the world. Lighting is indeed becoming a field.

—Mark Rea, professor and director, Lighting Research Center, Rensselaer Polytechnic Institute, Troy, N.Y.



- Professional OEM & ODM manufacturer.
- High efficiency for customization solution: Only 8 hours is needed.



LED RECESSED COMMERCIAL DOWNLIGHT

6INCH Power:18W/23W/27W
8INCH Power:18W/23W/27W/33W/40W/54W
With CREE LED chipset
0-10V dimming optional
UL Listed



LED PARKING LIGHT

Power:24W/48W/80W/100W/150W/200W/300W
High Luminous Efficacy up to 100LM/W
With SAMSUNG LED chipset
With built-in MEANWELL driver
Five kinds of installation way optional
ETL Listed



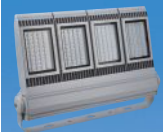
LED WALL PACK

Power:24W/48W/80W/100W/120W/150W
High Luminous Efficacy up to 80LM/W
With SAMSUNG LED chipset
With built-in MEANWELL driver
15°/30°/60°/60°*135°/85°*135°Optic Lens
ETL Listed



LED WALL PACK

Power:60W/80W/120W/150W
High Luminous Efficacy up to 80LM/W
With SAMSUNG LED chipset
With built-in MEANWELL driver
ETL Listed



LED FLOOD LIGHT

Power:30W/50W/80W/100W/140W/210W/280W
High Luminous Efficacy up to 90LM/W
With SAMSUNG LED chipset
With built-in MEANWELL driver
ETL Listed



Huizhou CDN Industrial Development Co., Ltd

ADD: No.A17,Xianghe West Road,Dongjiang Industrial District, Shuikou Town, Huizhou City,Guangdong Province, PRC.

Sales Director: Mr. Lami Xu
Email: lamixu2016@gmail.com
Mob: +86-135 0017 4656
Skype: dicav-lami
<http://www.cdnlighting.cc>



NOBEL PRIZE FOR THE DISCOVERY OF THE BLUE LED



In October 2014, lighting science received one of the greatest acknowledgments possible: The Nobel Prize. That year, the Royal Swedish Academy of Sciences awarded the Nobel Prize in Physics to three scientists—Isamu Akasaki, Hiroshi Amano, and Shuji Nakamura—“for the invention of efficient blue light-emitting diodes which has enabled bright and energy-saving white light sources.” Never before had researchers working so directly in the lighting field been recognized on a world stage for their scientific achievement.

Red and green LEDs had been developed in the 1950s and 1960s using gallium phosphide. What made Akasaki, Amano, and Nakamura’s line of research novel was the idea that blue-light gallium nitride (GaN) was the material needed to make up the diode’s architecture. The breakthrough came in 1986 when Akasaki and Amano created a high-quality GaN crystal. In 1990, Nakamura was also successful in producing a high-quality GaN crystal. The first blue diode was presented in 1992 and even though a relatively young discovery, revolutionized lighting technology. –E.D.



ESTABLISHMENT OF THE USGBC'S LEED PROGRAM

In 1993, the U.S. Green Building Council (USGBC) was launched with a mission to transform the marketplace for environmentally preferable building design and construction practices. In less than a decade, the USGBC was well on its way toward that goal. Not only did it popularize the terms “green building” and “sustainable design,” it also launched LEED—Leadership in Energy and Environmental Design—a green building benchmarking system. Since its debut in 2000, LEED has driven the global demand for quantifiable “green” buildings. It rapidly gained acceptance among progressive municipalities, school systems, universities, institutions, and corporations seeking a metric to encourage and reward efficient, high-performance facilities.

LEED has changed the way the architectural design, engineering, and construction professions practice. To meet the program’s stringent criteria practitioners have had to collectively learn to deliver buildings with a highly integrated design approach. But, LEED did not originally include lighting design as a qualitative element in its quantitative metrics. Lighting designers may have been miffed by this oversight, but nonetheless they still sought to achieve LEED accreditation because it offered a competitive advantage with architects seeking consultants who could address energy efficiency, daylight integration, and controls.

Lighting designers had long been advocating for sensible energy codes. The International Association of Lighting Designers (IALD) had its Energy Committee and the closely allied Quality of the Visual Environment Committee pushed for smart energy legislation regarding lighting systems. As the USGBC gained influence, many lighting designers adopted LEED design principles and contributed to the refinement of lighting-related credits in the early versions of LEED. In 1999, the IALD converted its Energy Committee into the Energy and Sustainability Committee, with its members volunteering for USGBC working teams to interpret and improve the original credits for sustainable site lighting, daylight and views, and individual controllability of lighting. The Illuminating Engineering Society (IES) formed a Sustainability Committee in 2001

to influence credit development and to assemble its own “*Design Guide for Sustainable Lighting*” (IES DG-22-12). Many of these committee members volunteered to become voting members for the ASHRAE Standard 90.1 for energy efficiency, referenced by LEED.

As someone who started in theatrical lighting design and then found himself working on energy-efficient lighting and daylighting projects in the 1990s, I saw the green building movement as a significant business opportunity. From my involvement in the Environmental Protection Agency’s Green Lights Program to eventually co-chairing the IALD Energy and Sustainability Committee, I understood that LEED could be a powerful market driver for lighting. When the LEED exam was first offered in 2000, a few IALD members, including myself, took and passed the test. Within a couple of years the IALD and IES joined the USGBC. Lighting design firms have also steadily joined the USGBC and encouraged their staff to take the LEED-AP exam.

LEED’s popularity has raised the awareness of lighting as a critical component of energy efficient and environmentally responsible design. While it may have originally caught the lighting design profession by surprise, it has become part of the profession’s standard vocabulary and scope of work.

—Mark Loeffler, IALD, LEED FELLOW, director, Atelier Ten Environmental Design Consultants + Lighting Designers, New Haven, Conn.

82,000+

Number of commercial projects that have participated in LEED

15.7 billion

square feet of LEED-certified space

198,000+

individuals who have become LEED accredited professionals



LOW-VOLTAGE LIGHTING

In the mid-1980s, low-voltage lighting started to become a very popular option for architectural lighting applications due to its optical control and small footprint. Sidney M. Pankin, a lighting applications engineer at Pankin & Associates who wrote “The Part Department,” a regular article series in the early days of this publication, discussed low-voltage lighting in our November 1987 issue. He explains that one of the more exciting aspects of low-voltage lighting was that it was designed as a system. It could be used in a variety of fixture types—recessed, track, or as individual point sources—and with a wide variety of wattages and beam-spread options. Considered most beneficial for accent or tasklighting, it’s not considered a good strategy for ambient lighting. Additionally, low-voltage lighting needs to use an AC step-down transformer to lower the power to 12V. Low-voltage lighting systems can be dimmed, to

extend lamp life, but must be used with magnetic transformers specially designed for use with low-voltage lighting components.

One of the most famous low-voltage halogen lighting systems was the YaYaHo (shown), first introduced in Europe in 1984 by Munich-based designer Ingo Maurer. The fixture heads were fully adjustable and could be positioned anywhere along the parallel set of horizontally mounted cables. This particular system was designed for 230V or 125V with a secondary output of 12V; the transformer had a maximum capacity of 200W while the maximum capacity of the cables was 350W.

Aesthetically, low-voltage lighting systems might seem out of date today, but the complexity of installing such a system and the coordination of components has a number of affinities with today’s LED lighting when it comes to source, power, circuitry, and dimming. —E.D.



ONE SWITCH AWAY FROM ANYTHING.



We're more than ballasts. We're Panasonic.

Universal Lighting Technologies, Inc. is Panasonic's Commercial Lighting division for North America. With over 69 years in business, we offer a comprehensive product line and full lighting control strategy for almost every application imaginable.

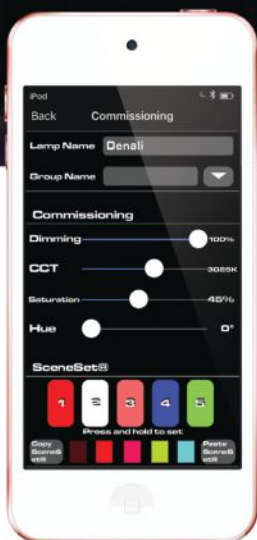
For more information, visit www.unvlt.com or call **1.800.225.5278**.



A member of the Panasonic Group

Panasonic

Evoked inspiration.



Download on the
App Store

Imagine the possibilities...Having complete control at your fingertips. Maintenance? What maintenance? To never have to open your fixtures to change the intensity, or to create that dramatic effect you've been looking for!

The **INSPIRATION Control System™** iOS® App enables control of B-K Lighting's Bluetooth® Wireless Technology featuring BKSSL® Power of 'e' with Adjust-e-Lume® Nite Star™ and Power of C™ with Color Tuning Technology Denali Series™ floodlights.

What could be more inspiring?



B-K LIGHTING.com

What will inspire you?

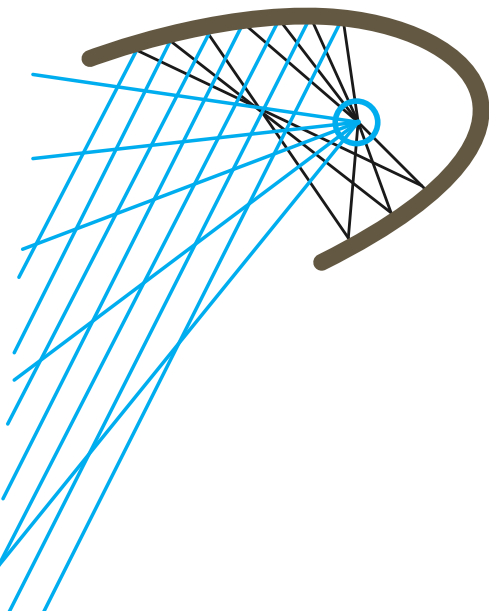




DEVELOPMENT OF THE ASYMMETRIC REFLECTOR SYSTEM

The **asymmetric reflector system** is both a lighting technique and a technology that has been incorporated into luminaires. It was developed by Sylvan (Sy) Shemitz, who, as a young lighting designer, could not find the market-ready fixtures he needed for his lighting design projects. So Shemitz, along with colleague Ben Stahlheber, began to develop the luminaires they needed and that incorporated an asymmetric distribution of light with tight beam control. They experimented with different reflector shapes and came up with a design made of an ellipse and two parabolas that could illuminate a surface or a plane more efficiently and effectively than anything on the market at the time. Unable to find a manufacturing partner who was interested in producing his fixtures, Shemitz started his own company, Elliptipar, in 1976.

The beauty of Shemitz's concept for the asymmetric reflector design is that it allows light to create a luminous surface from a minimal setback. Depending on the reflector orientations, the luminaire can wallwash, uplight, or downlight. The contours of the parabolas drive light down or across the illuminated surface from one edge. The shape of the elliptical section (from which the company name was derived) shields the lamp from viewing angles and reshapes the light into a parabola. The lamp placement at the optical center of the reflector prevents the light rays from re-entering the lamp source. —E.D.



THE JEFFERSON MEMORIAL

The **Jefferson Memorial** in Washington, D.C., on the south edge of the National Mall's Tidal Basin, was designed and began construction in 1939 and opened to the public in 1943. The original design of the monument did not include any provisions for exterior lighting, and it was not until 1964 that an exterior lighting solution was implemented. That task fell to lighting designer Sylvan (Sy) Shemitz (1925–2007), whose design used a combination of high-wattage incandescent and high-pressure sodium lamps with a combination of colored key and fill light to model the architectural surfaces. When the project was completed in 1973, the statue of Thomas Jefferson was the first to use an asymmetric reflector system.

In 2001, to mark the occasion of the 200th anniversary of Jefferson's presidential inauguration—which also happened to coincide with the 100th anniversary of Sylvania Lighting—lighting designer David Mintz of the Mintz Lighting Group was asked to devise a new lighting scheme for the memorial. The fixtures and sources used for the 1973 design, while appropriate at the time, no longer met the energy and maintenance requirements. Mintz and his team developed a new scheme that incorporated a combination of metal halide, ceramic metal halide, and induction lamp technologies that allowed for close to 80 percent energy savings.

In addition to the technical achievement of illuminating the 129-foot-tall monument while maximizing energy use is the design achievement of using light to provide a greater grounding of the structure to the site. The steps leading up from the Tidal Basin to the rotunda had never been illuminated. In the new scheme, floodlights placed at the northeast and northwest edges of the basin accomplish that task. David Mintz recalls how everything looked the time when they were doing on-site mock-ups to show the Fine Arts Commission and the National Park Service: The minute they turned the floodlighting on for the steps, people began to gather and sit, drawn to the welcoming nature of the new illumination. —E.D.





Compact Flood Light



IP65

Model Number: GY300TG/FG,GY380TG/FG
 Power: 80/120/140/200W
 Luminous Efficiency: 110lm/W
 Beam Angle: 30°/60°/80°/110°
 Color Temperature: 3000K/4000K/5000K



Sports and Area Floodlight



IP66

Model Number: GY496TG
 Power: 200/400/600/800W
 Luminous Efficiency: 120lm/W
 Beam Angle: 13°/30°/60°/90°/120°
 Mounting Height: 0~50m



SHANXI GUANGYU LED LIGHTING CO.,LTD.

Sales Center (Beijing)
 Tel: 86 10 62113630
 Fax: 86 10 62153948
 Cellular: 86 18610264858
 Email: wanghui@gyled.com.cn
 Skype ID: rayking188
 www.gyledlighting.com



GYLED provides OEM services with the support of its professional R&D and technical departments.



TRANSFORMATION OF THE NIGHT

With the introduction of gas light in London in 1813, the nighttime environment of cities was transformed. As lighting educator and historian David Di Laura writes in *The History of Light and Lighting* (IES, 2006), "As gas lighting spread and its availability became ubiquitous in cities, it produced an independence from darkness that changed the social, work, and personal habits." Prior, society had equated "night" and "darkness" with fear, danger, disease, and death. Conversely "day" and "light" represented goodness, health, purity, and life. It's a complex symbolism still at play today.

As gas lamps gave way to early forms of streetlighting, such as Austin, Texas' Moonlight Towers (shown), cities became more navigable and accessible to a greater number of economic classes. Lighting became a neutralizer of sorts. Today we inhabit a 24/7 world that has ironically reminded us to reconsider the importance of darkness as a complement to light. —E.D.

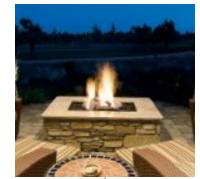
C02047, Austin History Center, Austin Public Library



control
freaks
rejoice



ZDlink controller



With ZD Technology™ and Luxor Accessories, the ZDlink controller zones and dims almost any brand of dimmable 12V or 110V fixture. And it runs relay-driven elements like fire pits or fountains. *The excitement it generates may be uncontrollable.*

holm



LIGHT POLLUTION AND THE NIGHT SKY

In our increasingly illuminated world and rapidly expanding urban centers, one of our greatest challenges is managing light and maintaining areas so that low light levels, even darkness, can be achieved in desired areas. In fact, the study “World Atlas of Artificial Night Sky Brightness” published in the open access journal *Science Advances* in June 2016 found that “80 percent of the world’s population lives under light-polluted skies. The United States and Europe have it the worst, with 99 percent of their denizens experiencing sky glow at night.”

Light pollution, defined as “the wasteful upward light from electrical sources that is scattered in the atmosphere and reflected back to Earth,” is just as serious as any other type of pollutant. One group that has been working to keep the balance between light and darkness in check is the International Dark Sky Association (IDA). Established in 1988 and

made up of astronomers and environmentalists, it is “dedicated to protecting the night skies for present and future generations.”

The IDA acts as an “advocate for the protection of the night sky” and works with a variety of constituencies that have an interest in the illuminated landscape, everyone from members of the public to city planners, from policy makers to lighting designers and lighting manufacturers, from the National Park Service to environmental activists. To date, through its International Dark Sky Places conservation program launched in 2001, the IDA has certified more than 65 Dark Sky Places around the world, across six continents, totaling 58,000 square kilometers (21,200 square miles). A small percentage of the Earth, but a start to preserving the night sky, a critical component in how we think about the illuminated—and nonilluminated—world. —E.D.



SIMPLE SOLUTIONS
FOR BUSY SPACES

System solution by PAL's Microlinea LED system:
www.pal-lighting.com/systemsolutions2



TRIBUTE IN LIGHT

If ever there was a project that represented the singular power of illumination, Tribute in Light would be it. Conceived to commemorate the terrorist attacks of Sept. 11, 2001, lighting designer Paul Marantz of Fisher Marantz Stone (FMS) was asked to realize the design of architects John Bennett and Gustavo Bonevardi, artists Paul Myoda and Julian Laverdiere, and architect Richard Nash Gould. Bold and dynamic, the symbolic “pillars of light” are meant to recall the silhouettes of the fallen Twin Towers. As the shafts of light disappear into the night sky, the clarity of the design becomes evident, and stands as a powerful reminder of what was lost. (FMS also designed the lighting for the National September 11 Memorial and Museum.)

First lit six months after the attacks on March 11, 2002, in a vacant lot in Battery Park City at West and Vesey Streets, the seemingly simple approach is anything but. Each pillar of light was created from 44 individual 5000K, 7,000W xenon spotlights set in a 50-foot square. The light shafts shine 4 miles up into the night sky and are visible from up to 20 miles away. Over the course of construction, the installation moved around the World Trade Center site. The Municipal Art Society, with funding from the Lower Manhattan Development Corp. oversaw the project through 2011. In 2012, the National September 11 Memorial and Museum assumed responsibility. Through this metaphorical use of illumination, light becomes the language of absence and presence, remembrance, and hope. —E.D.



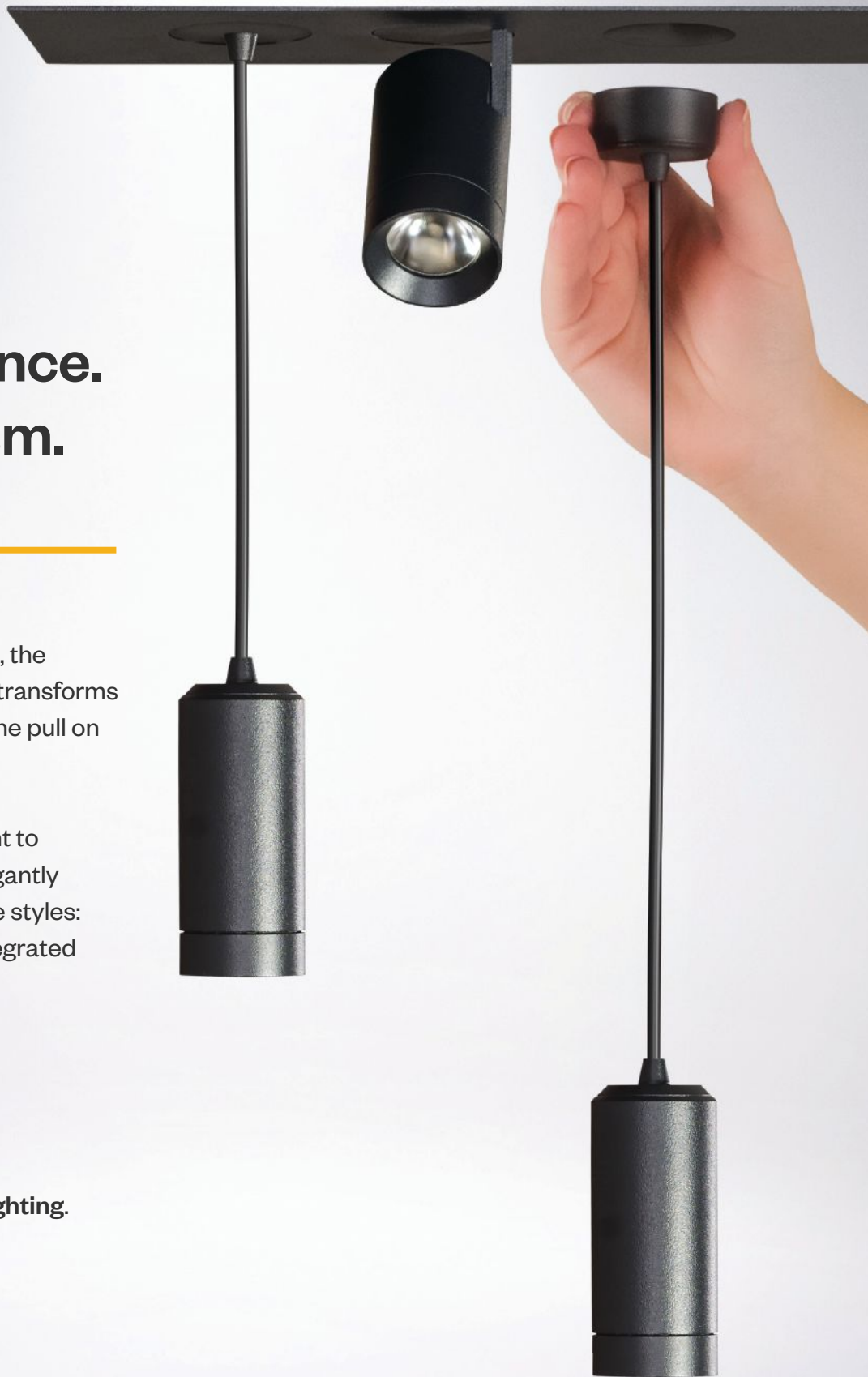
Instant Ambience. Pure Magnetism.

Introducing the 6 watt LED Cynch, the attractive, versatile new light that transforms the ambience of any venue with one pull on its magnetic connection.

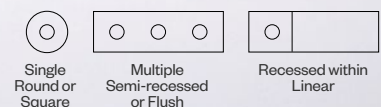
Cynch easily switches from accent to pendant, and back again. The elegantly compact light is offered in multiple styles: as a stand alone, in a group, or integrated into our linear fixtures.

For more information, visit amerlux.com/cynch.

Follow us on Twitter [@AmerluxLighting](https://twitter.com/AmerluxLighting).



Cynch Mounting Options





THE DESIGNER–MANUFACTURER COLLABORATION

It is not uncommon for a lighting designer to discover that no matter how many lighting products there are on the market, the luminaire or light source they need to realize their design concept does not exist. As a result, there is a long tradition in lighting of designers partnering with manufacturers to customize a luminaire to meet the specific project scenario or even to develop a completely new luminaire. Two projects that serve as examples are the relighting of the Statue of Liberty by the Brandston Partnership in 1986 and the lighting for the September 11 National Memorial by Fisher Marantz Stone in 2007.

The Statue of Liberty (shown) has proved a lighting challenge ever since it was installed in New York Harbor in 1886. As the 150-foot-tall copper-clad Lady Liberty neared her centennial in 1986, lighting designer Howard Brandston was asked (in 1984) to give her a “lighting makeover.” Brandston studied the sculpture, noting that the statue looked its best in early morning light. His design called for creating a hierarchy of illumination—four zones from the base to the top of the statue that would increase in intensity culminating with the glowing focal point, the torch. To do this Brandston realized that he would need “one lamp to mimic the morning sun and one lamp to mimic the morning sky” but soon discovered that no such lamp existed that could meet these criteria. Partnering with General Electric, Brandston worked with a team of engineers to design a new light source for the project. It took two years, but in the end they delivered a “cool” and a “warm” metal halide lamp that could achieve the desired effect.

The design for the September 11 National Memorial, a competition-winning scheme called “Reflecting Absence,” by architect Michael Arad and landscape architect Peter Walker, called for a landscape of trees surrounding two reflecting pools that would echo the void of the Twin Tower’s footprints. Lighting designer Paul Marantz, of Fisher Marantz Stone (FMS), was asked to illuminate the project and find a way to stay true to the design while meeting the security criteria. The two main fixtures developed for the project—the site pole and the submersible fixture at the waterfalls—break

new ground in achieving technical performance previously thought impossible.

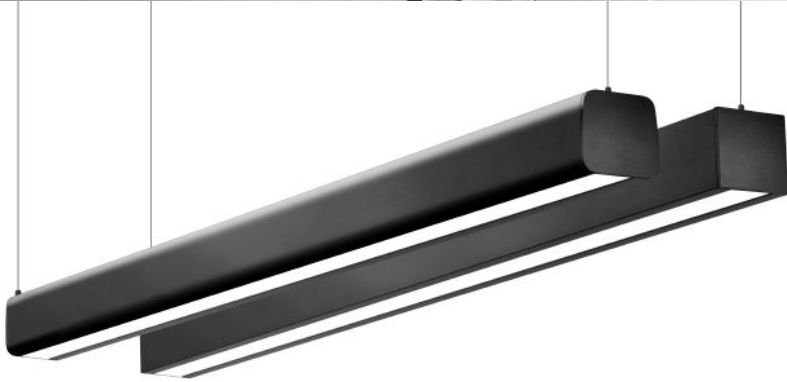
For the site fixture, FMS used prismatic refractors around a 4-foot linear fluorescent light source to achieve the necessary vertical illuminance. The technology had only ever been used in a cylindrical form but the plaza design required a square-shaped luminaire. FMS worked with lighting manufacturer Selux, who had been instrumental in developing this technology, to adapt it to the new form factor.

The other technical lighting achievement happens at the two reflecting pools. The challenge was how to create an uplight that would be bright enough while withstanding the constant volume of water coming from the 30-foot waterfall. FMS partnered with Winona Lighting, an Acuity Brand, to design a new luminaire using early LED lamp technology that incorporated water cooling to dissipate the heat produced by the LEDs. The fixture’s wiring is also designed so that the luminaire can be disconnected and replaced from an access space adjacent to the pool and out of public view. In both instances, collaboration was essential for the design and for advancing lighting. —E.D.





Complete Integrated LED Lighting Solutions



SNAP-IN LOUVER
REDUCES GLARE

SYNTHESIS LED LINEAR

The Pendant that's easy as ABC to specify

www.acolyteled.com/synthesis-linear

Acolyte's new Synthesis Linear is a direct/indirect pendant that is as easy as ABC to specify. Choose from a range of 4 direct and 6 indirect beam angles. Square and Rounded profiles available in black, silver, white and gold. Customized lengths available and over 100 lm/w. The new Synthesis LED Linear is the ideal fixture for any space.



www.acolyteled.com | 212.629.6830 | ss@acolyteled.com
LEDs | Fixtures | Drivers | Channels | Controllers | Parts & Accessories



MERGERS AND ACQUISITIONS

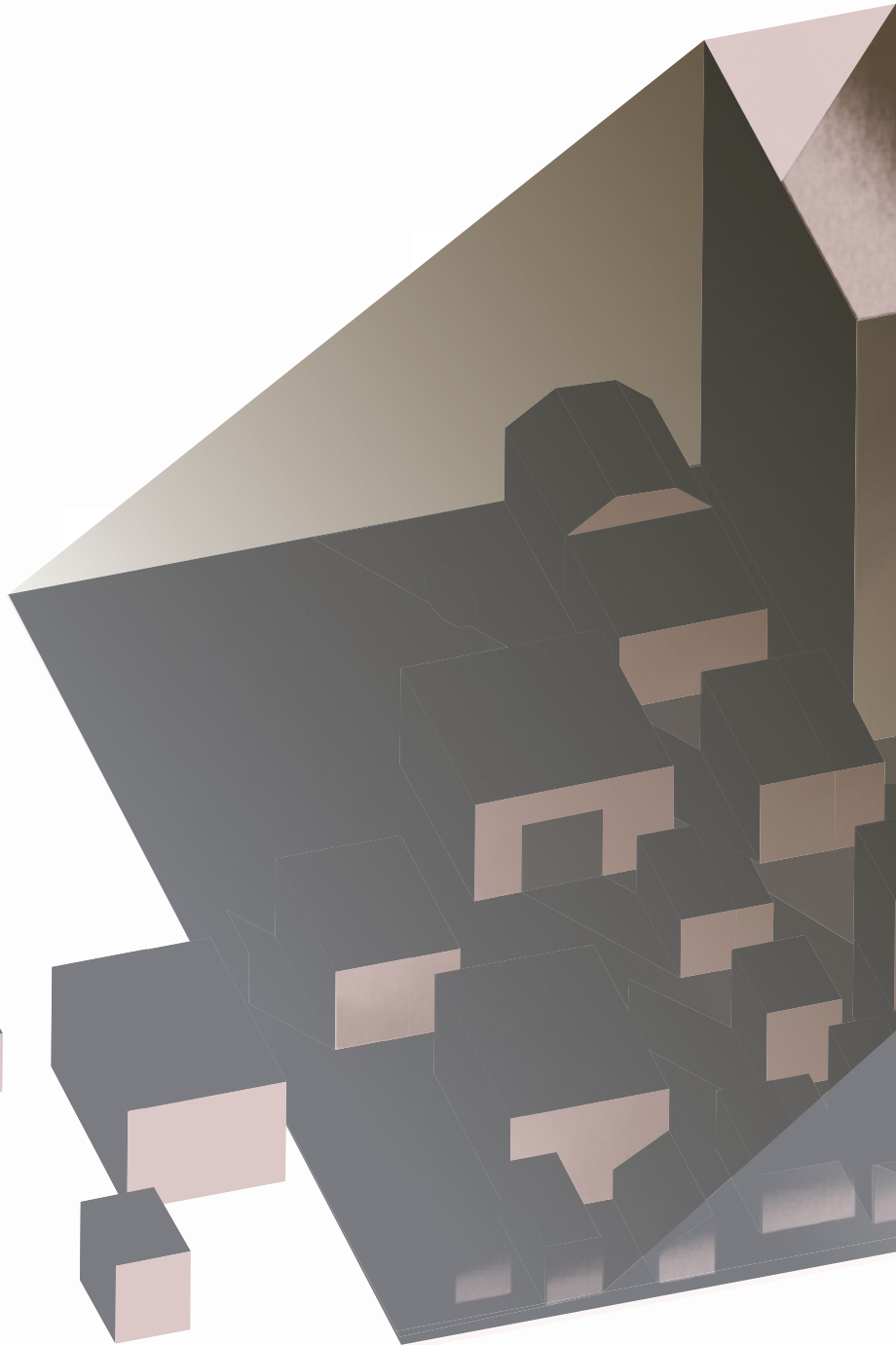
Lighting manufacturers have typically grown their businesses in one of two fundamental ways: organically from within or by an external merger or acquisition. The catalyst for the most recent cycle of mergers and acquisitions over the past 15 years was the introduction of LEDs into the lighting market.

With such a disruptive and unknown technology, many companies opted to get into the LED game by acquiring existing LED businesses. The first of these notable realignments occurred when Philips Lighting acquired Boston-based LED company Color Kinetics in late 2007. Philips had already acquired LED chipmaker Lumileds in 2005 and TIR Systems in early 2007. With this addition to their portfolio, it gave Philips, primarily known as a lamp company, the ability to transform its business and growth at a system level. It also set in motion a similar set of acquisitions, as other legacy companies such as Cooper Lighting sought to add LEDs to their portfolio. Cooper would go on to acquire io Lighting, also at the end of 2007, and then later would be acquired itself by Eaton in 2012.

But some companies like Ruud Lighting ventured to establish their own LED business units. Ruud's BetaLED, in time would become attractive to LED companies who were looking to add the missing component of luminaires from their businesses. Cree acquired Ruud Lighting/BetaLED in 2011.

Once companies had added LEDs to their portfolios, they looked next to add lighting controls, drivers, and sensor companies to their lineups. For example, Acuity Brands acquired eldoLED, an LED driver company in 2013 and Distech Controls in 2015.

Mergers and acquisitions have been a common theme over the course of the lighting industry's history. The ebb and flow of the business landscape is a complicated one, and it is guaranteed that as lighting technology and business condition continue to fluctuate, there will be other iterations of this complex business process in the years ahead. —E.D.





THE CHANGING BUSINESS LANDSCAPE

As the lighting industry has realigned itself to meet the new world order of solid-state lighting, the last thing anyone expected was for legacy companies such as Philips, Osram, and GE to reconsider their lighting businesses completely. Through the process of mergers and acquisitions, which had been rigorously playing out during the 2000s, it seemed as if the industry was heading toward a makeup of a few dominant publicly traded lighting conglomerates and a few independently owned, small and mid-sized lighting businesses. The surprise that caught many off guard was when Osram and Philips began divesting their lighting businesses in 2013. GE Lighting danced around the issue, stating it was “transforming” its lighting business, until it finally announced in fall 2015 that it was launching Current, powered by GE, an “energy company that integrates GE’s LED, Solar, Energy Storage and Electric Vehicle businesses.” For the lighting community as a whole, such a dramatic recasting of players once mainstays of the pre-LED era was difficult to imagine. —E.D.



LIGHTING TRADE SHOWS

Lighting trade shows provide that critical interface between manufacturers and designers that make possible the exchange of new product and technical information, and provide important networking opportunities. Over time, the lighting industry has developed various formats for these events, everything from week-long international expos to one-day local lighting representative showcases for a particular suite of brands.

In the early 1990s, there were two major national lighting trade shows trying to find their feet in the United States: Lighting World and Lightfair. The schedule in 1990—Lightfair in April in New York and two iterations of Lighting World, one in June in Chicago and one in October

in Los Angeles —put a great deal of stress on the industry, as ARCHITECTURAL LIGHTING’s editor at the time, Wanda Jankowski, noted in “Trade Show Trauma” (August 1990). She quoted lighting manufacturer Marvin Gelman, founder of Stony Point, N.Y.-based Lighting Services Inc: “The coasts have become prohibitive for manufacturers to participate in more than one trade show a year.” Today, the issues of time and expense are still a critical factor, as exhibitors and attendees decide which trade shows are necessary to attend in order to deliver and to keep up with the latest product introductions.

Lightfair wound up being the victor of the North American market and, over the course of its 27-year history, has become the go-to event for lighting designers in the United States. All of which is not surprising when you realize that the show is co-owned by the International Association of Lighting Designers, the Illuminating Engineering Society, and AMC, the company that also produces and manages the event.

In the early days of Lightfair, the show rotated between New York, Chicago, and San Francisco. In 2003, the coast-to-coast rotation was limited to New York and Las Vegas. In 2011, because of the renovation at the Javitz Center in New York, Lightfair moved to Philadelphia. Last year, it was held in San Diego, where it drew 617 exhibitors and 27,628 registered attendees, a far cry from that first New York show which had 208 exhibitors and 7,500 registered attendees.

Outside of the U.S., Messe Frankfurt oversees a series of megascale trade shows around the world. For the lighting design community, the most notable is the biannual Light+Building. Held at the company’s fairground in Frankfurt am Main, Germany, the complex includes 12 exhibition halls and a congress center and covers 6.2 million square feet. In 2016, Messe Frankfurt reported that the fair had received 216,000 trade visitors from 160 countries, and 2,589 exhibitors. Over the past decade, the international spectacle has drawn an even larger contingency of lighting designers and manufacturers from the United States, and that has started to impact how manufacturers choose to exhibit here. —E.D.

CONFERENCE ADVISORY BOARD:

- American Society of Landscape Architects
- Rockwell/Manor Inc. - ASD
- Design Decision Inc. - FID2, US98
- Facility Management Worldwide - FMA
- GB Associates - IED
- Light & Space Associates - IAD
- Lumen Source - IED
- Michael E. Cole Architectural Lighting Consultant - IESNA, IED
- The Lighting Group, P.C. - IESNA

EXHIBITOR ADVISORY BOARD:

- AEP Lighting & Ceiling Products, Inc.
- Altimark Leuch Inc.
- Ego
- General Electric Company
- The Gerdyn Group
- GIL/Yokawa Lighting
- East View Company
- Luxon Inc.
- Philips Lighting Company
- Trak Lighting
- Zenith Lighting Inc.

LIGHTFAIR
INTERNATIONAL LIGHTING EXPOSITION & CONFERENCE

Premieres in New York
April 10-12, 1990
The New York Hilton & Towers

Never before has the lighting industry been so actively involved in creating an event that positions international engineering advancements and new product designs as practical solutions for your needs. An event that will have significant impact on your business.

As the only conference and exposition developed by the industry*, LIGHTFAIR answers the concerns of architects, interior and landscape designers, engineers, lighting professionals, facility managers, distributors, contractors, manufacturers and their representatives. Don't miss the valuable educational seminars and the new product introduction forum spotlighting new advancements in the marketplace.

For more information contact:
LIGHTFAIR
240 Peachtree Street, NW,
Atlanta, GA 30303
or call 404-220-2107 or 220-2217.
National Endorsement: Institute of Business Designers

Season of lights.



Featuring Petal[®] OLED Pendant

visalighting.com





MEDIA FAÇADES

Potsdamer Platz 10

As LEDs first began to make their way into lighting in the early 2000s, their digital programming and color capabilities opened areas of investigation for those looking to use lighting in a new way, particularly when it came to the exteriors of buildings. Designers saw the digital aspect of LEDs as an opportunity to reimagine the building façade as more than just a structural component that separates interior from exterior and instead to use it as a large-scale pixel platform for conveying information and graphics. Building façade now became billboard. One of the first firms to explore “façade as communication medium” was Berlin-based studio Realities:United (RealU).

RealU was founded in 2000 by brothers and architects Tim and Jan Edler. The duo had been exploring digital technology and ways it could be integrated into buildings. Their first media façade in 2003 was a project

called BIX, a communicative light display embedded into the plexiglass panels of the Kunsthau in Graz, Austria, designed by British architects Peter Cook and Colin Fournier. BIX served as the foundation for RealU’s next media façade in 2005, a display called “Spots” (shown) for a newly constructed office building at 10 Potsdamer Platz in Berlin. The client asked RealU to design an interactive façade that would serve as a marketing device to entice future tenants. To form the “giant, low-resolution, grayscale matrix,” RealU used fluorescent light tubes as the pixels—1,104 ring-shaped tubes and 760 bars. The brightness of each lamp was controlled via a central computer. Over the course of the project’s 18-month run, a combination of curated images—movies, graphics, and animation sequences—as well as artist-commissioned, site-specific works were on display. —E.D.

BockLighting

Bock offers unparalleled products, quality, service and lead time. Our products are completely customizable with lead-times under two weeks in most cases.



Bock's latest LED technology uses Cree LEDs with light levels from 850 to 2000 lumens. 2700, 3000, 3500, 4000 Kelvin colors available. Latest lighting technology with no compromise in looks.

For more information, please visit: <http://Bock.Lighting/LVE>

www.BockLighting.com

(866) 262-5740 • sales@bocklighting.com





AXIS



2 PROFILES
AXIS/ICON

 AYRE

info@ayrelight.com
877.722.AYRE
ayrelight.com



"BRIDGE" TECHNOLOGIES

As lighting technology has evolved, not every new product introduction has had equal staying power. For example, incandescent lamp technology existed for well over 100 years before it was seriously challenged by the paradigm-changing LED. And some lighting technologies are more interesting for the bridge they provide between major developments. One example of this is the compact fluorescent (CFL) lamp.

From a design standpoint, consumers have never been enamored with CFL's harsh color temperature or lack of beam control and dimming capability. Furthermore, their mercury content is cause for environmental concern, a concern that is often viewed as bigger than any energy savings the source might offer.

The first spiral CFL was developed in 1976 by Edward E. Hammer, an engineer with General Electric in response to the 1973 energy crisis. The lamp was made by coiling a slender, 13mm-diameter, T4 glass tube. Existing lamp machinery could not consistently reproduce the delicate spiral, unfortunately, and GE decided the investment needed to retool factories was too great, so the lamp was not brought to market.

Later, in the 1980s, lamp manufacturers began to introduce CFLs that could be used with medium screw-based sockets as an alternative to the incandescent lamp. In 1980, Philips introduced its SL lamp, the first self-ballasted (magnetic) screw-in CFL which featured a double-folded T4 tube and color-stable phosphors. This was followed by Osram's introduction, in 1985, of the Delux EL lamp, the first CFL to use an electronic ballast.

Wary of repeating the mistakes of the CFL introduction—premature to market, too expensive compared to the incumbent technology, and installation and performance issues—the lighting industry has been particularly strategic with the market introduction of LEDs. The U.S. Department of Energy even went so far as to issue a report in June 2006, *Compact Fluorescent Lighting in America: Lessons Learned on the Way to Market*, as a way to safe guard the introduction of solid-state lighting and ensure it would not become another bridge technology. —E.D.

Josh McKenna

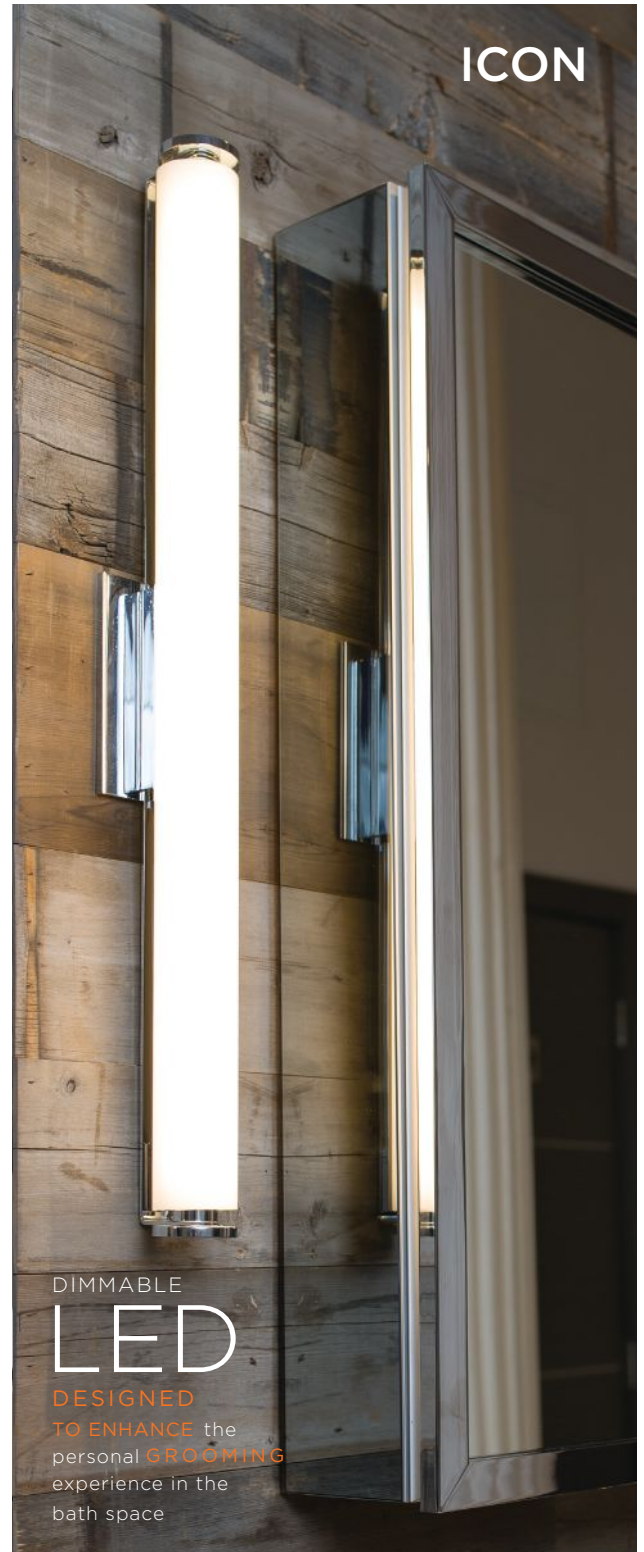


TEXAS HOUSE BILL 2649

In May 2009, the lighting community got a huge wake-up call: Texas House Bill 2649. The bill included an amendment that would have prevented lighting designers from practicing in the state of Texas, limiting the regulation and practice of lighting design only to licensed engineers, architects, landscape architects, and interior designers.

Upon learning about the measure on May 26, less than 24 hours before the vote was scheduled to take place, the International Association of Lighting Designers mobilized its membership in a rapid call to action. Over the next 24 hours, the lighting community rallied to resolve the issue before the Texas state legislative session ended.

Never before had lighting designers so swiftly mobilized on an issue, let alone one that put the issue of who can and cannot practice lighting design at center stage. The harsh realization of what might have been lost—the ability of established lighting practitioners to practice their craft in an entire U.S. state—served as a catalyst for revisiting discussions within the lighting community on the subject of qualifications and how that might lead to some type of licensure or credentialing system. The threat from the Texas House Bill was also a reminder about the need for greater and more frequent communication with design colleagues in other fields, as well as the need for a full-time monitoring system of the legislative issues that impact the lighting design community. —E.D.

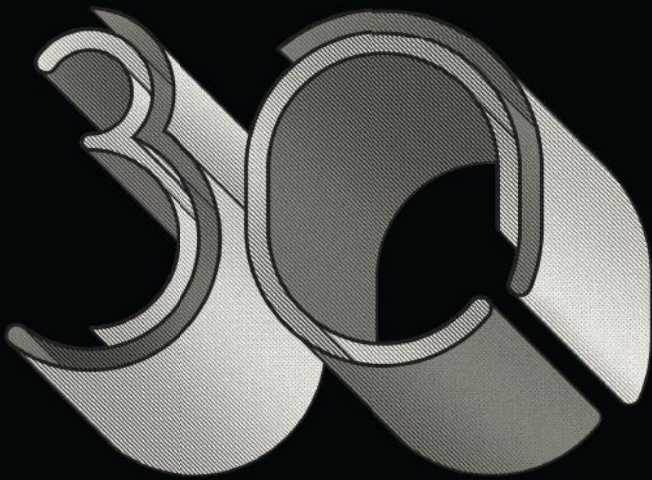


DIMMABLE
LED
DESIGNED
TO ENHANCE the
personal **GROOMING**
experience in the
bath space

5 LENGTHS
FROM 18" to 60"

 **AYRE**
info@ayrelight.com
877.722.AYRE
ayrelight.com





ESTABLISHMENT OF A CREDENTIALING SYSTEM

Although lighting design considers itself a profession, it does not have an education system or professional work path that leads to licensure, as does architecture or engineering. The issue of a recognizable qualification that speaks to what distinguishes a lighting practitioner is one that the lighting community has struggled with since the International Association of Lighting Designers (IALD) was first established in 1969.

In the late 1980s and early 1990s, the debate over this issue led to the creation of the National Council on Qualifications for the Lighting Professions (NCQLP) exam. Established in 1991 to create a testing format that would acknowledge an individual's baseline competency to practice lighting, successful completion of the exam leads to the title of Lighting Certified (LC) to be used after one's name. Although the exam was originally conceived with the intent to provide lighting designers with a way to distinguish themselves and their design skills, the program was not able to successfully monitor candidates and prevent those in the employ of lighting manufacturers from taking the exam. This has become a serious sticking point for the lighting design community, especially when it comes to the discussion around who can, and cannot, offer design services. As a result, lighting designers have questioned the meaningfulness of the designation. On average, about 300 people a year take the NCQLP exam and more than 2,500 people have passed it as of the end of 2015.

When the Texas House Bill 2649 incident occurred in May 2009 it was a harsh reminder that the lighting profession still had not successfully established a qualification system

that could withstand the pressures of legislative embroilments. In 2010, under the organizational guidance of the IALD, with input from the Professional Lighting Designers' Association (which disbanded in 2014), a task force was formed to explore the issues surrounding the establishment of a credentialing system and the process that it would entail. Chaired by Australian lighting designer David Becker, the six-person task force engaged in a thorough and lengthy multi-year process which led to the establishment of the Certified Lighting Design (CLD) program, which debuted in 2015 (www.cld.global). Seeking the CLD credential does not require an exam but rather an evidence-based assessment process by which applicants, who must first have completed three years' professional work experience, must prove their competency in five of seven different areas, or "domains of practice." To date, 20 lighting designers have completed the program and received the CLD designation, while many more are currently going through the review process.

While many see the CLD credential as a step in the right direction, the lighting design community still struggles with a fundamental problem: design colleagues and clients do not equate "IALD" after one's name as meaning lighting designer and being a member of the International Association of Lighting Designers, the main professional body representing the lighting design community, the way that they recognize "AIA" and know that the individual is a member of the American Institute of Architects and working in the architecture profession. That is the issue lighting designers must overcome as the profession heads into the next decade. —E.D.

MIRROR-LUX[®] 6002 Wheelchair Mirror



Introducing the 6002 Wheelchair Mirror, the latest addition to AAMSCO Lighting's collection of energy saving bath and vanity luminaires. Designed to meet the requirements of the Americans with Disabilities Act.

Ideal for handicapped suites of hotels, nursing homes, hospitals and public restrooms, the 6002 Wheelchair Mirror offers a beautiful yet functional design that will compliment any facility.

Residential – Hospitality – Custom
www.aamsco.com

The intelligent alternative sourcesm



AAMSCO Lighting, Inc.
100 Lamp Light Circle | Summerville, SC 29483 | Phone 843-278-0000 | 1-800-221-9092

iT Series

AOK[®]

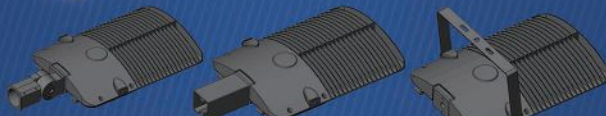
Quality, Honesty, Service and Innovation

Power: 75–265W, replace up to 1000W traditional lamp

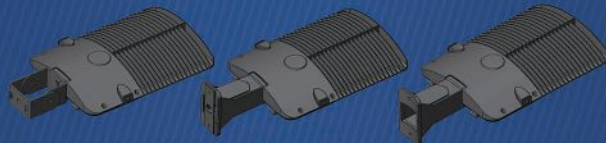
AOK 2016 iT Series

LED Area/Parking Lot/Shoebox Light
Multiple brackets available

AOK LFI 2017 booth: 4259, see you in Philadelphia!

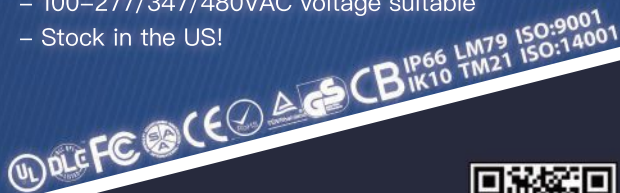


Slip Fitter Direct Arm Mount Trunnion Mount



Yoke Mount Square Pole Mount Round Pole Mount

- Daylight & occupancy sensor available
- Multiple brackets available
- Additional smart lighting system available
- 100–277/347/480VAC voltage suitable
- Stock in the US!



info@aokledlight.com
www.aokledlight.com



DIALux evo



LIGHTFAIR
INTERNATIONAL
The future, illuminated.

May 9–11, 2017
Philadelphia
Booth 549

**Design lighting
for entire buildings?
Now you can.**

With DIALux evo you can design lighting intuitively for complex spaces.

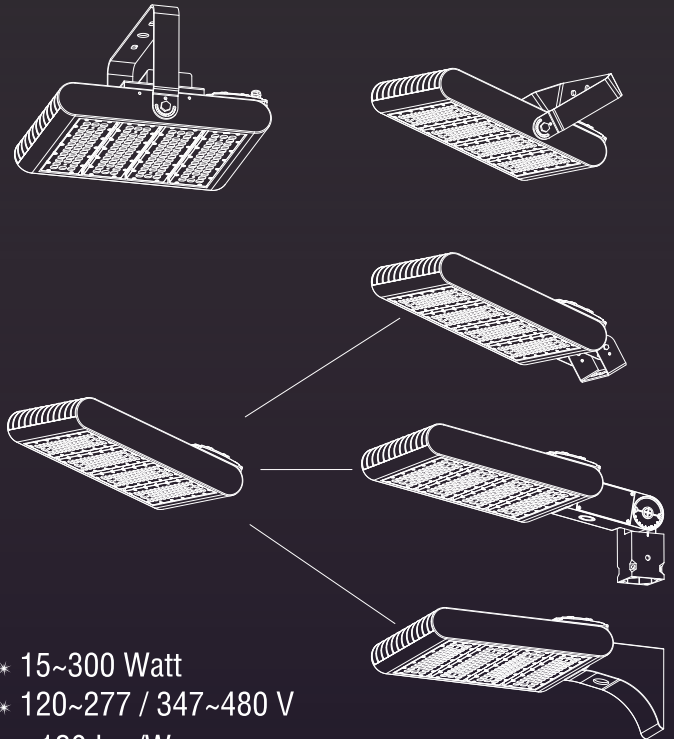
Learn more about its smart features and unique business model: DIALux is free for commercial and private use.



dialux.com

PROFESSIONAL

THAILIGHT OUTDOOR LIGHTING FIXTURES



FREE CREDIT HIGHLY

COST-EFFECTIVE

PAYMENT TERM (UNDER CONDITION)

OEM TOOLING (UNDER CONDITION)

- * 15~300 Watt
- * 120~277 / 347~480 V
- * >120 Lm/W
- * TYPE II / TYPE III / TYPE IV



THAILIGHT SEMICONDUCTOR LIGHTING CO., LTD
DongGuan | China T: +86 769 87061601 · F: +86 769 83713167

W: www.thailight-led.com · E: info@thailight-led.com

Founder: Edison Price

EDISON PRICE
LIGHTING

Revolutionizing lighting since 1952

www.epl.com

Greeble | JIUZHOU GREEBLE
Let There Be **NEW** Lighting

NEW CIRCUIT DESIGN
-----LED BR30 650LM

- 1) Which can be compatible with Bluetooth & Triac dimmer
- 2) Original circuit design with patent ;
- 3) Bluetooth & Triac dimmer can be widely used in LED light source & LED Luminaire.

Tel:86-755-21389841 Email: daisy.liu@scjz-led.com
www.jiuzhou-intl.com www.scjz-led.com

OLEDWorks LLC
Lumiblade Brite 2 OLED Lighting Panels



Discover OLED superb light quality, amazing thinness and improved efficiency. In two color temperatures and industry leading high brightness, Lumiblade meets applications from task lamps to custom installations. Backed by our commitment to delivery and quality.

Bring Your Design to Light at
www.oledworks.com

AYRE



NEW MULTI PENDANTS

877.722.AYRE info@ayrelight.com
Custom Design, Engineering and Manufacturing

ImagiLux
ULTRA-THIN LED PANELS
imagiluxled.com/AL

LIGHT DIRECTORY ARCHITECTURAL LIGHTING RESOURCE

LIGHTDIRECTORY.COM: Products, Catalogs, News, Jobs, Events, iPhone/Android apps

Aamsco has patented The ALINEA LED as the replacement for the incandescent lamp which has been discontinued. With an average life of 50,000 hours and a 3 year limited warrantee, it will ensure many years of use without the frequent re-lamping that is typical of incandescent lamps. The ALINEA LED is available in two color temperatures; 2400K with 90CRI and 3500K with 85CRI. The ALINEA LED fits into all existing ALINEA luminaires, as well as in any fixture using a standard S14s socket, with no modifications needed.

Consider the ALINEA Luminaire when choosing a lighting solution in your next design.



www.aamsco.com **AAMSCO**

PAL Microlinea Series 3 Recessed



Striving to drive interest in a space that would traditionally be considered pedestrian, our architect client designed a striking pattern of recessed fixtures that supply even light levels. With PAL's ability to provide a custom solution, including miter-cut, welded extrusions and precisely set lenses, we were able to minimize seams and create an appearance of continuous light.

Precision Architectural Lighting
www.PAL-lighting.com
+1.713.946.4343

whitegoods



inter-lux.com

ACOLYTE



NEONLYTE FLEX CHANNEL

Learn more at www.acolyteled.com

EDISON PRICE LIGHTING
LIGHTING MASTERPIECES



www.epl.com

LSI
LumeLEX 2020
Compact LED Cylinder
4 Degree Beam
5 Watts
26000 CBCP



www.LightingServicesInc.com

Re-think the ceiling



Philips OneSpace prefab gives light which evokes the feeling of daylight, creating a serene and calm space. You can transform any interior with beautiful, homogenous light which feels as good as it looks. OneSpace prefab was designed to be discreet and blend into minimalist designs. Visit philips.com/onespace.



PAL Microlinea Series 5 Wet Location



Introducing a rugged new series that enhances your exterior spaces while resisting the elements:

- Waterproof, dustproof and insect-proof (IP65-rated) for long life in demanding conditions
- One-piece extruded and gasketed snap-in lens delivers optimized output via maximum diffusion and high transmittance
- 0-10 volt dimming standard (available dimming to 1%)
- Delivered lumens of 806/foot at high output and a 4-ft. total light output of 3226 lumens at 41 watts
- Power consumption of approximately 10 watts/foot at high output and 5.5 watts/foot at medium output
- Temperature-rated from +40 to -40 C. (with cold-weather driver) for high reliability



Precision Architectural Lighting
www.PAL-lighting.com
 +1.713.946.4343

EVERLINE

Don't Let LED Driver Replacement Slow You Down!

DRIVER ON

QuikCross Web App

Universal
Lighting Technologies

Unparalleled light output, intelligent color



The newest generation of the Philips Color Kinetics Color-Reach Compact Powercore LED floodlights provide

more punch and light quality for exterior long throw applications, allowing you to maintain optimum light output and color integrity on tall, prominent iconic structures, signature facades, and bridges.

Visit colorkinetics.com/ls/rgb/colorreach-rgbw.



Celebrate the Past,
 Innovate the Present,
 Elevate the Future



ELEVATE



www.hubbellighting.com

HUBBELL Lighting

Infinite ways to make an impression



Philips Luminous Carpets give you the power to create truly memorable experiences in your building. Combining luxurious carpets with cutting-edge LEDs, the technology connects easily with your systems. You can display personal messages or subtle signage—whenever and wherever you want.

Visit www.luminous-carpets.com/usa.



lumenline™



Now with lit corners

lumenpulse™

ARCHITECT

The Journal of the American Institute of Architects

You Deserve More.



The premiere website for practicing architects—featuring news, project galleries, continuing education, blogs, videos and more is architectmagazine.com.

- > More projects
- > More news
- > More tech
- > More critiques
- > More products
- > More business

Get more today at architectmagazine.com



hanleywood

**GRAFIK T™ controls
by Lutron®**



Touch the future of lighting control with GRAFIK T. A clean, intuitive design and effortless operation set a new standard for lighting control. No knobs, sliders, or buttons, just touch. Dimmers, switches, and keypads work with all light sources; models available for residential and commercial applications.

Visit lutron.com/grafikt for more information.

PANOS LED Downlight



PANOS delivers unparalleled LED lighting quality, efficiency and precision with compound material construction inspired by space technology – no housing required. Installation is twice as fast as traditional downlights with housing.

zumtobel.us
845-691-6262
info.us@zumtobelgroup.com



ZUMTOBEL

AXT Series
Compact Xicato™ LED
at 720 & 1300 lumens.
→ <http://tsq.li/axt-series>

TIMESQUARE
LIGHTING
(845) 947-3034 | www.tsilight.com

**JESSE H.
NEAL
AWARDS**

Est. 1955

Congratulations

TO HANLEY WOOD'S JESSE H. NEAL AWARD WINNERS

Hanley Wood is committed to publishing quality content that serves the information needs of construction industry professionals. Our editors have once again been honored by the most prestigious editorial awards program. Join us in congratulating them.

2016 WINNERS

ARCHITECT
Best Media Brand
(Overall Editorial Excellence)

REMODELING
Best Subject-Related
Integrated Package

2016 FINALISTS

ARCHITECT
BUILDER
POOL & SPA NEWS
MULTIFAMILY EXECUTIVE

ADVERTISER	PAGE	WEBSITE	PHONE
Aamsco Lighting Inc.	63	www.aamsco.com	800.221.9092
Acolyte	53	www.acolyteled.com	212.629.6830
Acuity Brands	3	www.acuitybrands.com/Rubik	
Amerlux	51	amerlux.com/cynch	
AOK	64	www.aokledlight.com	
AYRE	60, 61	ayrelight.com	877.722.AYRE
B-K Lighting	43	B-KLIGHTING.com	
Bock Lighting	59	www.BockLighting.com	866.262.5740
CDN Lighting	40	www.cdnlighting.cc	
Dial GmbH	64	dialux.com	
Eaton's Cooper Lighting Business	23	Eaton.com/define	
Edison Price Lighting	66	www.epl.com	
Holm	47	holmighting.com	
Hubbell	17	www.hubbellighting.com	
Inter-Lux	21	inter-lux.com/whitegoods	
Ledia Lighting Technology Co., Ltd.	38	www.ledialighting.com	516.504.8000
LF Illumination LLC	C2-1, 37	lfillumination.com	
Lighting Services Inc.	13	www.LightingServicesinc.com	800.999.9574
LSI Industries Inc.	25	www.lsi-industries.com	513.793.3200
Lucifer Lighting	9	luciferlighting.com	
Lumenpulse	10-11	lumenpulsegroup.com	
Luminis	33	www.luminis.com	
Lutron	C4	lutron.com/vive	
NoUVIR Lighting	35	www.nouvir.com	302.628.9933
OLEDWorks	4	OLEDWorks.com	
Philips Lighting	6, 7	philips.com/Belnspired	
Precision Architectural Lighting	49	www.pal-lighting.com/systemsolutions2	713.946.4343
Shanxi Guangyu-GYLED	46	www.gyledlighting.com	
Sichuan Jiuzhou Electric Group Co. Ltd.	66	www.jiuzhou-intl.com	
Signcomplex	71	www.signcomplex.com	
Thailight Semiconductor Lighting Co, Ltd.	66	www.thailight-led.com	
The American Institute of Architects	2	aia.org/join	
The Lighting Quotient	31	www.TheLightingQuotient.com	
Universal Lighting Technologies	43	www.unvlt.com	800.225.5278
USAI Lighting	C3	usailighting.com	845.565.8500
Vibia, Inc.	29	www.vibia.com	732.417.1700
Visa Lighting	57	visalighting.com	
Vode Lighting	32	-	
Zumtobel Lighting Inc.	5	zumtobel.us/panos	

A.L

ARCHITECTURAL LIGHTING
Statement of Ownership

1. Publication Title: ARCHITECTURAL LIGHTING
2. Publication Number: 000-846
3. Filing Date: 9/22/16
4. Issue of Frequency: Six times: Jan/Feb, Mar/April, May/June, July/Aug, Sept/Oct, Nov/Dec
5. Number of Issues Published Annually: 6
6. Annual Subscription Price: Free to Qualified Recipients; \$48 to others
7. Complete Mailing Address of Known Office of Publication (Not Printer): One Thomas Circle, NW, Suite 600, Washington, DC 20005
8. Complete Mailing Address of Headquarters or General Business Office of Publisher (Not Printer): One Thomas Circle, NW, Suite 600, Washington, DC 20005
9. Full Names and Complete Mailing Addresses of Publisher, Editor, and Senior Editor - Publisher: Ron Spink, Hanley Wood Media Inc., One Thomas Circle NW, Suite 600, Washington, DC 20005; Editor: Elizabeth Donoff, Hanley Wood Media Inc., One Thomas Circle NW, Suite 600, Washington, DC 20005; Managing Editor: Greig O'Brien, Hanley Wood Media Inc., One Thomas Circle NW, Suite 600, Washington, DC 20005
10. Owner - Full name: Hanley Wood Media, Inc., One Thomas Circle, NW, Suite 600, Washington, DC 20005; HW Holdco, LLC, c/o Hanley Wood, Attn: Mike Bender, One

Thomas Circle, NW, Suite 600, Washington, DC 20005

11. Known Bondholders, Mortgagees, and Other Security Holders Owning or Holding 1 Percent or More of Total Amount of Bonds, Mortgages or Other Securities: None

13. Publication Title: ARCHITECTURAL LIGHTING

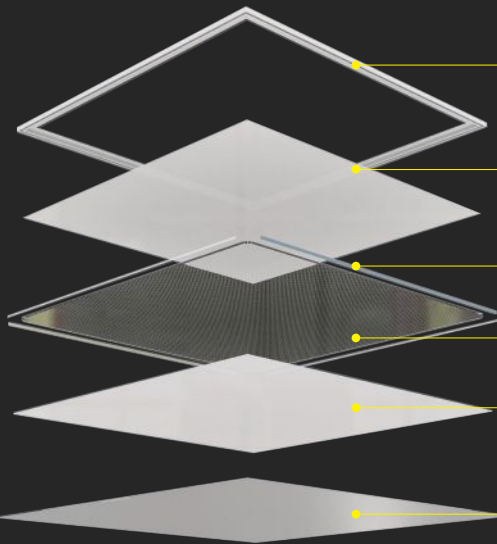
14. Issue Date for Circulation Data Below: July/August 2016

15. Extent and Nature of Circulation

	Average No. Copies Each Issue During Preceding 12 Months	No. Copies of Single Issue Published Nearest to Filing Date
(a) Total Number of Copies (Net press run)	31,415	31,045
(b) Legitimate Paid and/or Requested Distribution		
(1) Outside County Paid/Requested Mail subscriptions stated on PS Form 3541.	29,292	29,880
(2) In-County Paid/Requested Mail Subscriptions stated on PS Form 3541.	0	0
(3) Sales Through Dealers and Carriers, Street Vendors, Counter Sales, and Other Paid or Requested Distribution Outside USPS ®	42	39
(4) Requested Copies Distributed by Other Mail Classes Through the USPS	0	0
(c) Total Paid and/or Requested Circulation [Sum of 15b 1, 2, 3 & 4]	29,334	29,919
(d) Nonrequested Distribution		
(1) Outside Country Nonrequested Copies Stated on PS Form 3541	1,091	490
(2) In-Country Nonrequested Copies Stated on PS Form 3541	0	0
(3) Nonrequested Copies Distributed Through the USPS by Other Classes of Mail	0	0
(4) Nonrequested Copies Distributed Outside the Mail	333	100
(e) Total Nonrequested Distribution (Sum of 15d (1), (2), (3), and (4))	1,425	590
(f) Total Distribution (Sum of 15c and 15e)	30,758	30,509
(g) Copies not Distributed	657	536
(h) Total (Sum of 15f and 15g)	31,415	31,045
(i) Percent Paid and/or Requested Circulation	95.4%	98.1%
16. Electronic Copy Circulation		
(a) Requested and Paid Electronic Copies	5,258	5,586
(b) Total Requested and Paid Print Copies (Line 15C) + Requested/Paid Electronic Copies	34,591	35,505
(c) Total Requested Copy Distribution (Line 15F) + Requested/Paid Electronic Copies	36,016	36,095
(d) Percent Paid and/or Requested Circulation (Both Print and Electronic Copies)	96.0%	98.4%

17. Publication of Statement of Ownership for a Requester Publication is required and will be printed in the Nov/Dec 2016 issue of this publication.

18. I certify that all information furnished on this form is true and complete. Signature and title of Editor, Publisher, Business Manager, or Owner - Ron Spink, EVP (Publisher), 9/22/16



UL & DLC Certified LED Panel Light

6063 aluminum frame and aluminum PCB plate makes excellent heat dissipation performance.

Diffuser: 1mmPS, high light transmittance.

4014 SMD LED chip, high luminous efficacy with reliable quality.

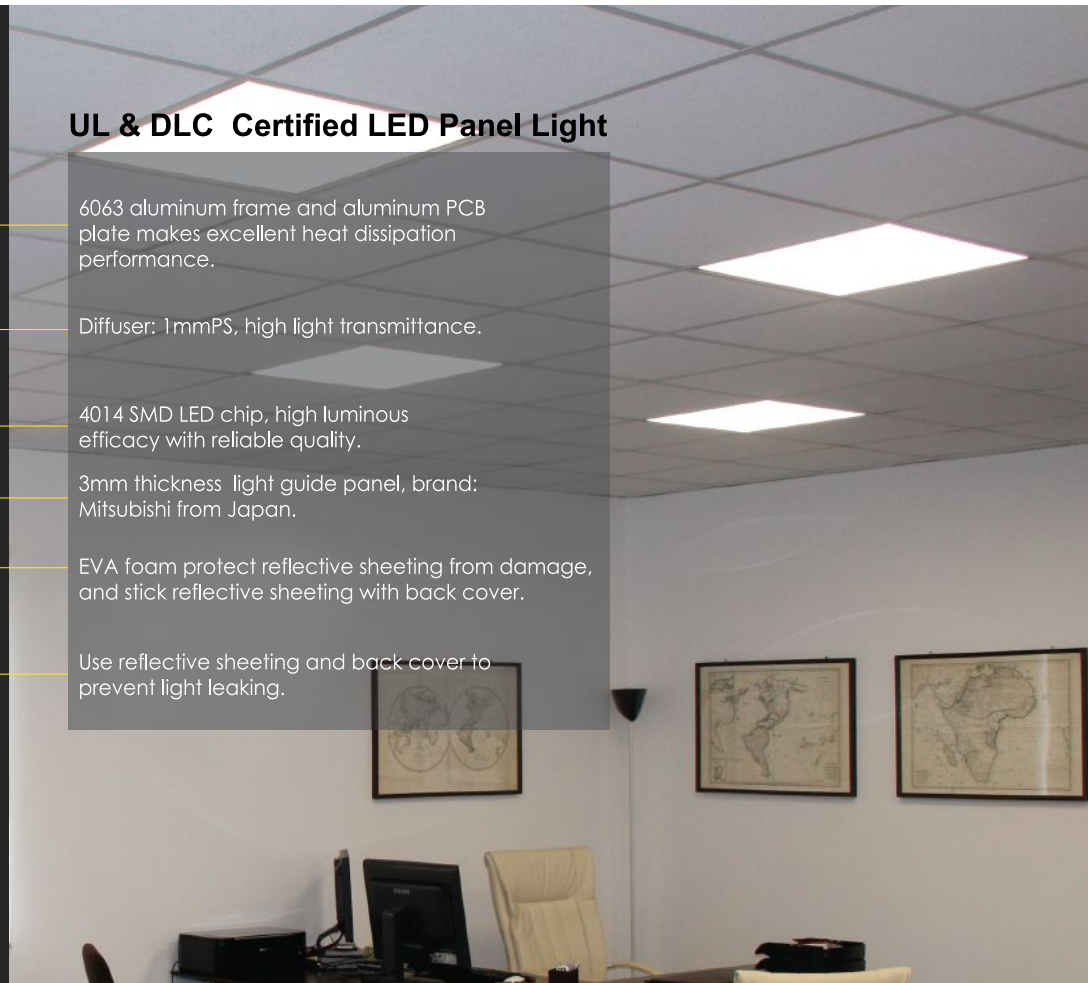
3mm thickness light guide panel, brand: Mitsubishi from Japan.

EVA foam protect reflective sheeting from damage, and stick reflective sheeting with back cover.

Use reflective sheeting and back cover to prevent light leaking.



www.signcomplex.com
marketing@signcomplex.com
phone:+86 755 2760 8650
fax:+86 755 2760 8651



INDUSTRY VOICES

Since 2009, ARCHITECTURAL LIGHTING has conducted One-on-One interviews with thought leaders from across the lighting industry—a generous mix of designers, [manufacturers](#), [government and utility officials](#), [educators](#), [researchers](#), and [next-generation voices](#)—and we added video interviews to the series in 2014. Here's the list of participants through the years.

[Hayden McKay](#) [James Brodrick](#) [Brett Andersen](#)
[Janine Benyus](#) [Suzan Tillotson](#) [George Mueller](#)
[Ulrike Brandi](#) [Peter Ngai](#) [Sean O'Connor](#) [Kevin](#)
[Houser](#) [Brian Stacy](#) [Peter Jacobson](#) [Francesca](#)
[Bettridge](#) [Christopher Ruud](#) [George Sexton](#) [Michael](#)
[Siminovitch](#) [Jan Lennox Moyer](#) [Naomi Miller](#) [Mike](#)
[Watson](#) [Chip Israel](#) [Zia Eftekhar](#) [Randy Burkett](#) [Ron](#)
[Schimmelpfenning](#) [Richard Renfro](#) [Bob Davis](#) [Leni](#)
[Schwendinger](#) [FX Souvay](#) [Barbara Horton](#) [Ann Reo](#)
[Glenn Heinmiller](#) [Eric Lind](#) [Gustavo Aviles](#) [Mariana Figueiro](#) [Mark](#)
[Major](#) [Bonnie Littman](#) [Jeremy Yon](#) [Phil Gabriel](#) [Ron Naus](#) [Jonathan](#)
[Speirs](#) [George Brainard](#) [Jean Sundin](#) [Derek Porter](#) [Denise Fong](#)
[Tom Warton](#) [Patricia Glasow](#) [Gilbert Mathews](#) [Gerd Pfarre](#) [Stephen](#)
[Selkowitz](#) [Roger Narboni](#) [Mark Rea](#) [Ann Kale](#) [Emma Price](#) [Robert](#)
[Shook](#) [Glenn Shrum](#) [Stephen Lees](#) [Joel Spira](#) [David Clinard](#) [Carlo](#)
[Guglielmi](#) [Stephen Bernstein](#) [Daniel Blitzer](#) [C. Brooke Silber](#) [Edwin](#)
[Rambusch](#) [Stephen Margulies](#) [Amer Maleh](#) [Renee Cooley](#) [John](#)
[Tremaine](#) [Steven Rosen](#) [Gerard Harber](#) [Nelson Jenkins](#) [Nathalie](#)
[Rozot](#) [Paul Gregory](#) [Terry Clark](#) [Len Auerbach](#) [Daniel Gelman](#)

Being shallow can be a good thing.




BabyLED®: Don't give an inch.

Give ceilings their glory with the shallowest and tiniest recessed LED housing in the world. BabyLED® delivers 1150 lumens of award-winning lighting performance while using less than 2.5" of plenum space. Let your ceilings stand tall, and give them the room they deserve with BabyLED®.



Shallow Fit™

 Want to learn more?

Download a PDF at usalighting.com/shallowfit

845-565-8500

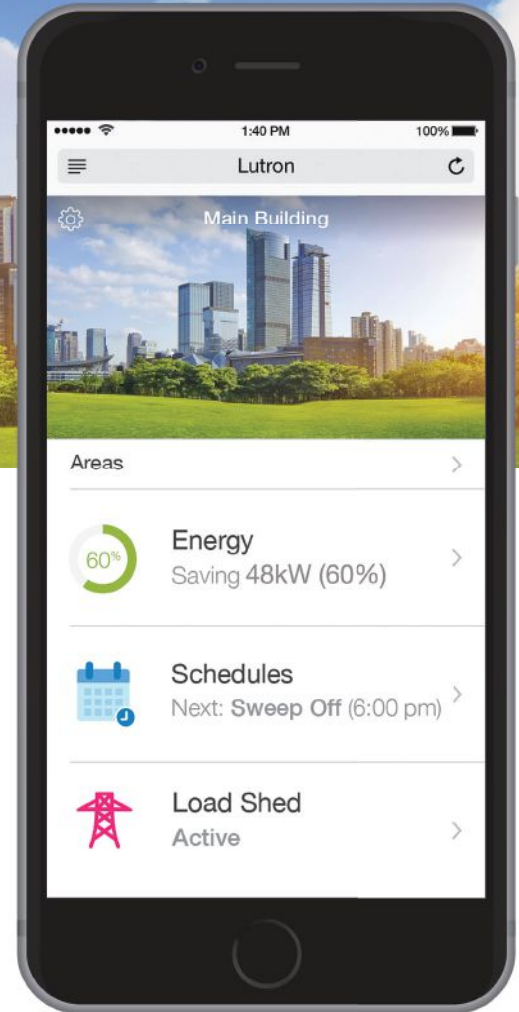
usalighting.com

© USAI Lighting 2016. All rights reserved.
Covered by patent numbers 7832889 and 8469536.

USAI®
Lighting

Simple and scalable
lighting control

VIVE™



Introducing a wireless lighting control system that saves energy and improves occupant comfort

- **Deliver central functionality** with time clock, demand response, energy monitoring, and building data via BACnet
- **Design for any space or load type** with a full suite of wireless controls
- **Install faster with wireless** — reduce labor time by up to 70%
- **Scale and grow over time** from a single room to a whole building
- **24/7 customer care** and world-class support allow you to specify with confidence

lutron.com/vive

 **LUTRON®**