



# Being shallow can be a good thing.



## **BabyLED<sup>®</sup>: Don't give an inch.**

Give ceilings their glory with the shallowest and tiniest recessed LED housing in the world. BabyLED<sup>®</sup> delivers 1150 lumens of award-winning lighting performance while using less than 2.5" of plenum space. Let your ceilings stand tall, and give them the room they deserve with BabyLED<sup>®</sup>.




Shallow Fit<sup>™</sup>

**USAI<sup>®</sup>**  
Lighting

845-565-8500

[usailighting.com](http://usailighting.com)

 Want to learn more?

Download a PDF at [usailighting.com/shallowfit](http://usailighting.com/shallowfit)

© USAI Lighting 2015. All rights reserved.  
Covered by patent numbers 7832889 and 8469536.

YOUR VISION

YOUR WAY

Solution provided by Microlinea LED system:  
[www.pal-lighting.com/systemsolutions](http://www.pal-lighting.com/systemsolutions)



+1.713.946.4343  
[www.pal-lighting.com](http://www.pal-lighting.com)

# DIALux evo



## Design lighting for entire buildings? Now you can.

With DIALux evo you can design lighting intuitively for complex spaces.

Learn more about its smart features and unique business model: DIALux is free for commercial and private use.



discover.dialux.com

SEPT/OCT 2015  
VOL 29, NO 5

# A·L

ARCHITECTURAL LIGHTING

**EDITOR-IN-CHIEF**  
Elizabeth Donoff  
edonoff@hanleywood.com  
202.729.3647

**MANAGING EDITOR**  
Greig O'Brien  
gobrien@hanleywood.com

**ART DIRECTOR**  
Robb Ogle  
roggle@hanleywood.com

**EDITORIAL**  
SENIOR EDITOR,  
BUSINESS, PRODUCTS, AND TECHNOLOGY  
Wanda Lau

**ART**  
SENIOR GRAPHIC DESIGNER  
Megan Mullsteff

ASSOCIATE EDITOR,  
BUSINESS, PRODUCTS, AND TECHNOLOGY  
Hallie Busta

GRAPHIC DESIGNER  
Ryan McKeever

ASSOCIATE EDITOR, DESIGN  
Deane Madsen

PHOTO EDITOR INTERN  
Alexander Cortez

ASSISTANT EDITOR, DESIGN  
Sara Johnson

**MULTIMEDIA**  
VIDEO PRODUCTION MANAGER  
Kaitlyn Rossi

ASSISTANT EDITOR,  
BUSINESS, PRODUCTS, AND TECHNOLOGY  
Caroline Massie

VIDEO PRODUCER  
Lauren Honesty

EDITORIAL INTERN  
Selin Ashaboglu

**CONTRIBUTING EDITORS**  
Elizabeth Evitts Dickinson,  
Bill Millard, Aaron Seward

DIGITAL CONTENT INTERN  
Angie Cook

#### EDITORIAL ADVISORY BOARD

Gregg Ander, FAIA, IESNA • Francesca Bettridge, IALD, IESNA •  
Barbara Cianci Horton, IALD • Kevin Houser, IESNA, EDUCATOR IALD •  
Mark Loeffler, IALD, IESNA • Paul Zaferiou, IALD

#### SUBSCRIPTION INQUIRIES, CHANGE OF ADDRESS, CUSTOMER SERVICE, AND BACK-ISSUE ORDERS

ARCHITECTURAL LIGHTING  
P.O. Box 3494  
Northbrook, IL 60065  
alit@omeda.com  
Local: 847.291.5221  
Toll-Free: 888.269.8410

#### PRODUCTION

PRODUCTION MANAGER  
Marni Coccaro  
mccoccaro@hanleywood.com  
AD TRAFFIC MANAGER  
Pamela Fischer  
pfischer@hanleywood.com

#### REPRINTS

Wright's Media  
Nick Iademarco  
niademarco@wrights  
media.com  
877.652.5295 ext. 102

#### LIST RENTALS

Statistics  
Jennifer Felling  
jfelling@statistics.com  
203.456.3339

INSIDE SALES  
AD TRAFFIC MANAGER  
Annie Clark  
aclark@hanleywood.com

## archlighting.com

One Thomas Circle, N.W. Suite 600 Washington, DC 20005

A·L ARCHITECTURAL LIGHTING (Vol. 29, No. 5 USPS 000-846, ISSN 0894-0436) is published six times per year (Jan/Feb, March/April, May/June, July/August, Sept/Oct, Nov/Dec) by Hanley Wood, One Thomas Circle, N.W., Suite 600, Washington, DC 20005. Periodicals postage paid at Washington, DC, and additional mailing offices. Printed in the USA. Postmaster: Send changes of address to ARCHITECTURAL LIGHTING, P.O. Box 3494, Northbrook, IL 60065.

Canada Post Registration #40612608/G.S.T. Number: R-120931738. Canadian return address: IMEX, P.O. Box 25542, London, ON N6C 6B2.

Distributed free of charge to individuals or firms engaged in the specification of lighting products in the U.S. Publisher reserves the right to determine recipient qualification. Per year, all other U.S. subscriptions \$48; Canada, \$60; Foreign, \$96. Payable in U.S. dollars. For subscription inquiries, address changes, and single-copy sales (\$10 in the U.S., \$15 in Canada, \$20 for other countries, payable in advance) write to ARCHITECTURAL LIGHTING, P.O. Box 3494, Northbrook, IL 60065 or call 847.291.5221 or toll-free 888.269.8410.

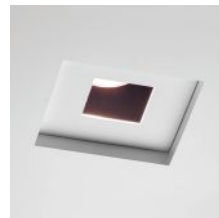
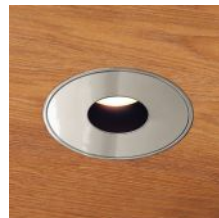
A·L ARCHITECTURAL LIGHTING is a trademark owned exclusively by Hanley Wood. Copyright 2015 Hanley Wood. Reproduction in whole or in part prohibited without written authorization.



# A SIMPLY SUPERIOR LED

Providing superior lighting solutions to the design community, No. 8 Lighting's LED luminaires outperform the other downlights in installation, operation and function.

- Beautiful color 95 & 85 CRI
- Higher lumen output delivering up to 1200 lumens
- Expanded beam spread options including 13, 15, 25, 40, 70 and 14 x 50 degree
- Smaller, airtight IC housing—rated for spray foam and conventional insulation, in single and multi-lamp configurations
- Proprietary phase dimming driver compatible with major brand control systems
- Multi-step binning process with guaranteed maximum variation of 1 x 2 SDCM
- Interchangeable lamp modules (adjustable, fixed, wallwash and mirror reflector)
- Wide array of trims and finishes for almost any ceiling environment



ARCHITECTURE & INTERIOR DESIGN  
RICHARD LANDRY  
ROOM PHOTOGRAPHY  
ERHARD PFEIFFER

[8lighting.com](http://8lighting.com)



Sass™ Scope™ Plural™ Passage™  
Multifunctional performance LED fixtures.  
VisaLighting.com/outdoor2015



DESIGN GROUP

GROUP PRESIDENT  
**Ron Spink**  
rspink@hanleywood.com, 202.736.3431

GROUP EDITORIAL DIRECTOR,  
DESIGN AND COMMERCIAL CONSTRUCTION  
**Ned Cramer**

ADVERTISING SALES

SENIOR DIRECTOR,  
INTERNATIONAL ACCOUNTS  
**Dan Colunio**  
dcolunio@hanleywood.com  
202.736.3310

VICE PRESIDENT,  
GENERAL MANAGER OF DIGITAL  
**Christie Bardo**  
cbardo@hanleywood.com  
703.307.3014

NATIONAL ACCOUNT MANAGER,  
LIGHTING  
**Cliff Smith**  
csmith@hanleywood.com  
864.642.9598

STRATEGIC ACCOUNT MANAGER, WEST  
MIDWEST  
**Suren Sagadevan**  
ssagadevan@hanleywood.com  
773.824.2435

STRATEGIC ACCOUNT MANAGER,  
MIDWEST  
**Michael Gilbert**  
mgilbert@hanleywood.com  
773.824.2435

DIRECTOR OF SALES,  
EMERGING ACCOUNTS GROUP  
**Philip Hernandez**

DIGITAL PRODUCT DIRECTOR  
**Nickie Denick**

STRATEGIC ACCOUNT MANAGER,  
CHINA, HONG KONG, TAIWAN  
**Judy Wang**  
judywang2000@vip.126.com  
86.13810325171

INSIDE SALES,  
BUSINESS DEVELOPMENT MANAGER  
**Jaeda Mohr**  
jmohr@hanleywood.com

AUDIENCE MARKETING DIRECTOR  
**Mary Leiphart**

EXECUTIVE DIRECTOR, DIGITAL  
MARKETING AND SALES ENABLEMENT  
**Matthew Carollo**

HANLEY WOOD MEDIA

PRESIDENT, MEDIA  
**Dave Colford**

VICE PRESIDENT,  
PRODUCT DEVELOPMENT  
**Rizwan Ali**

SENIOR VICE PRESIDENT,  
AUDIENCE OPERATIONS  
**Sarah Welcome**

EXECUTIVE VICE PRESIDENT,  
STRATEGIC MARKETING SERVICES  
**Tom Rousseau**

SENIOR DIRECTOR,  
PRINT PRODUCTION  
**Cathy Underwood**

VICE PRESIDENT,  
CLIENT OPERATIONS  
**Mari Skelnik**

SENIOR VICE PRESIDENT,  
STRATEGIC MARKETING SERVICES  
AND CONSUMER MEDIA  
**Jennifer Pearce**

CHIEF DESIGN DIRECTOR  
**Aubrey Altmann**

DIRECTOR OF ANALYTICS  
**Jennifer Malkasian**

HANLEY WOOD

CHIEF EXECUTIVE OFFICER  
**Peter Goldstone**

VICE CHAIRMAN  
**Frank Anton**

CHIEF FINANCIAL OFFICER  
**Matthew Flynn**

PRESIDENT, MEDIA  
**Dave Colford**

PRESIDENT, DIGITAL  
**Andrew Reid**

PRESIDENT, METROSTUDY  
**Christopher Veator**

PRESIDENT, MARKETING  
**Jeanne Milbrath**

SENIOR VICE PRESIDENT,  
CORPORATE SALES  
**Paul Mattioli**

SENIOR VICE PRESIDENT,  
MARKETING  
**Sheila Harris**

VICE PRESIDENT,  
FINANCIAL PLANNING AND ANALYSIS  
**Ron Kraft**

SENIOR VICE PRESIDENT,  
CORPORATE DEVELOPMENT AND  
GENERAL COUNSEL  
**Michael Bender**

DIRECTOR OF SALES,  
EMERGING ACCOUNTS GROUP  
**Philip Hernandez**

VICE PRESIDENT,  
CORPORATE CONTROLLER  
**Keith Rosenbloom**

From Hanley Wood, publisher of ARCHITECT, AQUATICS INTERNATIONAL, BUILDER, CONCRETE & MASONRY CONSTRUCTION PRODUCTS, CONCRETE CONSTRUCTION, THE CONCRETE PRODUCER, CUSTOM HOME, THE JOURNAL OF LIGHT CONSTRUCTION, MASONRY CONSTRUCTION, MULTIFAMILY EXECUTIVE, POOL & SPA NEWS, PROSALES, PUBLIC WORKS, REMODELING, REPLACEMENT CONTRACTOR, RESIDENTIAL ARCHITECT, and TOOLS OF THE TRADE magazines.

**Disclosure:** ARCHITECTURAL LIGHTING will occasionally write about companies in which its parent organization, Hanley Wood, has an investment interest. When it does, the magazine will fully disclose that relationship.

**Privacy of mailing list:** Sometimes we share our subscriber mailing with reputable companies we think you'll find interesting. If you do not wish to be included, please call us at 888.269.8410.

# Knowledge you can build on.



## Information you can count on.

Even if you're a veteran lighting professional, you never stop learning. The Lighting reSOURCE features information, education and inspiration powered by over 100 years of expertise to energize your lighting career. From LED toolkits and photo galleries to original feature content on emerging lighting trends, The Lighting reSOURCE gives you 24/7 access to the information you need to deliver world-class results. Enhance your lighting knowledge at [TheLightingResource.Eaton.com](http://TheLightingResource.Eaton.com).

**EATON**

*Powering Business Worldwide*

Follow us on social media to get the latest product and support information.



## FEATURES

### 38 ILLUMINATING A CATHEDRAL OF LEARNING

**An \$18 million restoration to the nave of Yale's Sterling Memorial Library brings James Gamble Rogers' Gothic Revival masterpiece back to life.**

### 44 SECOND EDITION

**A new addition to the Stapleton Library on Staten Island creates a 21st-century gathering place while reinvigorating the local community.**



The community room at the Stapleton Library

## DEPARTMENTS

### 10 COMMENT

**New Times, New Metrics**

### 12 BRIEFS

**Nightscape 2050; See the Light; and Zumtobel renews its focus on the Americas**

### 21 IN FOCUS

**Michael Kors Shanghai Flagship Store Façade**

### 26 PRODUCTS

**LED Spotlight**

### 29 TECHNOLOGY

**Advancements in thermal management promise the most-efficient generation of LEDs yet**

### 56 ONE-ON-ONE

**Interview with lighting educator Nathalie Rozot**

### ARCHLIGHTING.COM

As always, check out our website for expanded article coverage, videos, and news. Also, subscribe to our email newsletter, AL Notes, and find a link to ARCHITECTURAL LIGHTING's digital edition.

**On the Cover: Yale's Sterling Memorial Library nave restoration. Photo by Brian Rose.**



# LIGHT DEFINES THE EXPERIENCE

Pandora Jewelry, Hereford, UK



Fully adjustable Lumenalpha Multi downlights provide true color fidelity and sparkle at Pandora Jewelry, all while reducing energy usage and costs.

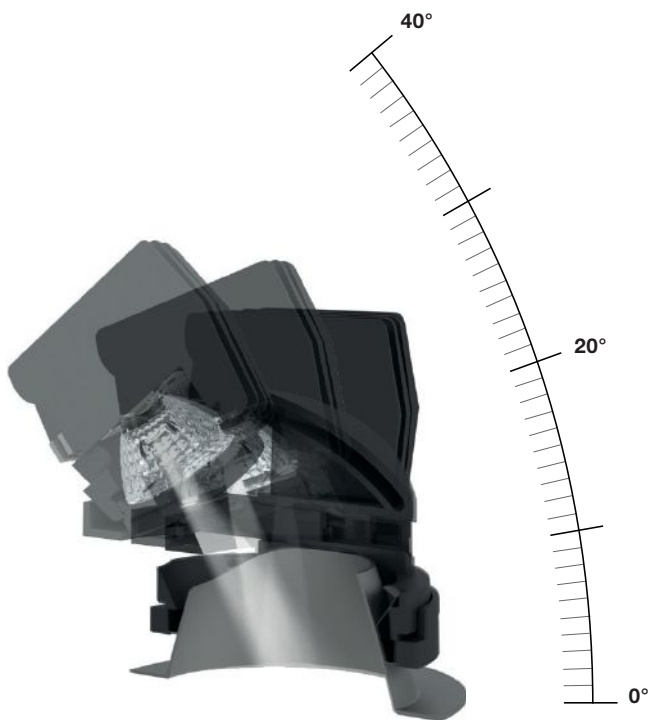
**lumenpulse**<sup>™</sup>

[www.lumenpulse.com](http://www.lumenpulse.com)



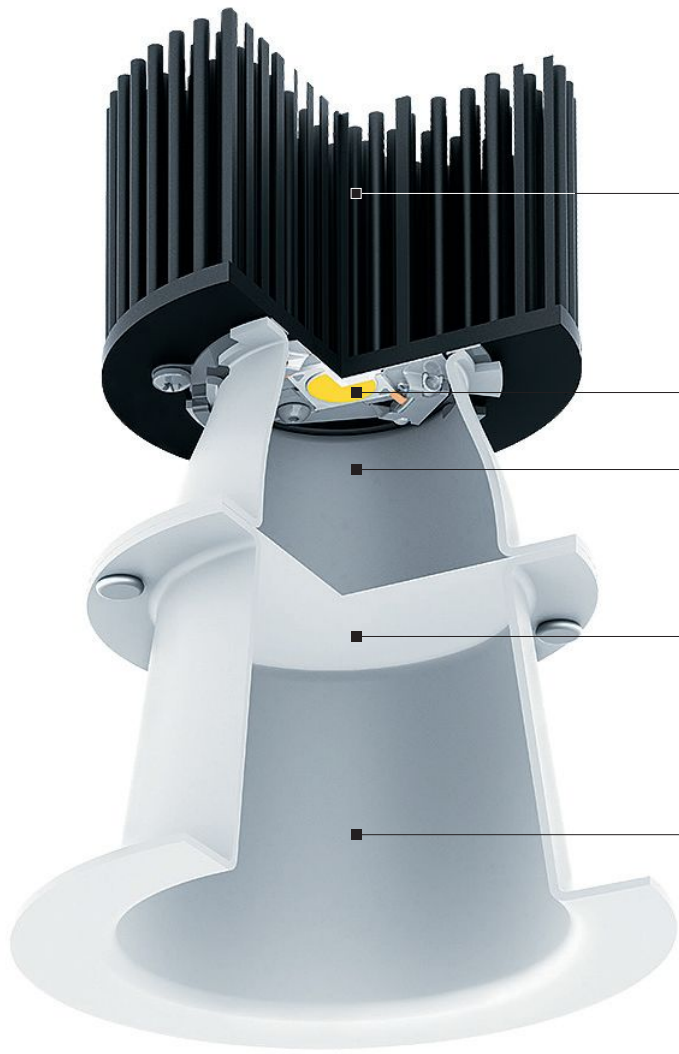
**BASYS LED II**

**BASYS LED II** is the next generation of the Zumtobel downlight and wallwasher series. Available with a broad range of options in 2.75", 4" and 6" apertures to meet the versatility and the demands of architectural lighting environments. Consisting of square and round recessed downlights and wallwashers, the product family provides efficient, flexible and precise illumination. One of the groundbreaking highlights in the BASYS LED II range is the adjustable version with the patented tiltShift technology.



**Adjustable with patented  
tiltShift technology**

While the luminaire can be tilted between 0° to 40°, it simultaneously shifts dependent on the angle so that the beam remains in the center of the aperture and will not be cut off by the reflector. Even if the angle of the beam changes, the luminous flux and the light quality, as well as appearance, remains constant. Additionally, BASYS LED II with tiltShift technology allows for rotation up to 360°. The combination of these features enhances the light quality and provides superior adaptability in the build environment.



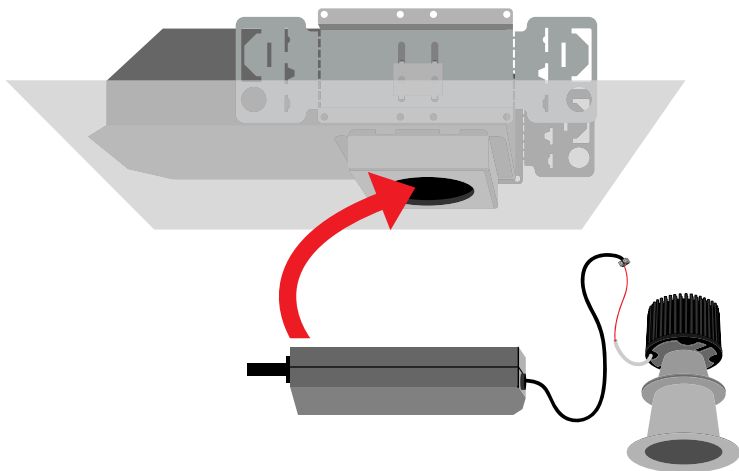
**Optimized passive cooling**  
to enhance efficiency and LED lifetime

**High-performance LED chip**  
with best-in-class CRI and tight MacAdam ellipse  
step to create consistent, premium light quality

**Highly engineered mixing chamber**  
that creates the unique narrow and medium beam

**Zumtobel advancedOptics**  
diffuser technology that supports the intended light  
distribution and reduces glare

**Zumtobel advancedReflector**  
technology with a unique 45° and 55° cut-off to either  
create less glare or improve efficacy



**UL-certified driver housing design**

Adding to the overall efficiency, the new dedicated driver housing design allows an option to ship the housing prior to the luminaire and driver. The capability to install the housing and complete the electrical wiring initially prevents damage or the loss of the reflector, luminaire and driver on the job site. The luminaire and driver are simply passed through the housing aperture and connected to the electric supply via a quick-connect mechanism. This unique feature leads to efficient installation and convenient maintenance. The luminaire and driver can be quickly removed for easy maintenance outside of the housing, which is especially helpful in inaccessible ceiling situations.

# BASYS

## Light Distribution



Zumtobel BASYS LED II 2.75" adjustable with tiltShift technology (from left: 40° tilted and 20° tilted)



Zumtobel BASYS LED II 2.75" Wallwashers and Downlights (from left: 55° and 45° cut-off)

# DOWNLIGHT



2.75"	4"	6"
<b>Color Temperature</b> 2700 K 3000 K 3500 K 4000 K	<b>Color Temperature</b> 2700 K 3000 K 3500 K 4000 K	<b>Color Temperature</b> 2700 K 3000 K 3500 K 4000 K
<b>Luminous Flux</b> 600 lm – 1200 lm	<b>Luminous Flux</b> 1000 lm – 2100 lm	<b>Luminous Flux</b> 1400 lm – 3200 lm
80 or 90 CRI	85 CRI	85 CRI
Damp Location	Wet Location	Wet Location
Energy Star Rated Chicago Plenum TechZone 6" option	Energy Star Rated Chicago Plenum TechZone 6" option	Energy Star Rated Chicago Plenum

# WALLWASHER



Round | Square  
 Flanged | Flangeless  
 45° Cutoff | 55° Cutoff



2.75"	4"	6"
<b>Color Temperature</b> 2700 K 3000 K 3500 K 4000 K	<b>Color Temperature</b> 2700 K 3000 K 3500 K	<b>Color Temperature</b> 2700 K 3000 K 3500 K
<b>Luminous Flux</b> 500 lm – 1000 lm	<b>Luminous Flux</b> 1000 lm – 2100 lm	<b>Luminous Flux</b> 1400 lm – 3200 lm
80 or 90 CRI	85 CRI	85 CRI
Damp Location	Wet Location	Wet Location
Energy Star Rated Chicago Plenum TechZone 6" option	Energy Star Rated Chicago Plenum TechZone 6" option	Energy Star Rated Chicago Plenum

# ADJUSTABLE



## Patented tiltShift technology

Tilt 0–40°  
360° Rotation  
Constant uncut beam



Round | Square  
Flanged | Flangeless



## Beam Angles

10° 24° 38° 60°

2.75"

## Color Temperature

2700 K  
3000 K  
3500 K  
4000 K

## Luminous Flux

850 lm – 1700 lm

80 or 90 CRI

Damp Location

Energy Star Rated  
Chicago Plenum  
TechZone 6" option



**USA and Canada**

Zumtobel Lighting Inc.  
3300 Route 9W  
Highland, NY 12528  
T +1-845-691-6262  
F +1-800-448-4131  
zli.us@zumtobel.com

zumtobel.us

**Designed in USA and Austria.****Manufactured in USA.**

Zumtobel Lighting, Inc. (Americas Division), based in Highland, New York, is a subsidiary of Zumtobel Group AG. As an innovation leader in the North and South American markets, Zumtobel provides next-generation lighting solutions and luminaires. Designed in both the United States and Austria, Zumtobel luminaires are manufactured in Highland, New York. Zumtobel Lighting, Inc. strives to meet the evolving needs of its customers and ships its most popular product in 10 days or less and standard product offerings within 4 – 6 weeks with an industry leading 98% on-time delivery rate.

Zumtobel is a brand of Zumtobel AG with its head office in Dornbirn, Vorarlberg (Austria).





**ZUMTOBEL**

## **BASYS LED II**

**Best light quality  
with a low profile and  
adjustability**

The next generation of  
the Zumtobel downlight  
and wallwasher series



- Industry leading 98 % on-time delivery
- Most popular products ship in 10 days or less
- Standard product offerings ship within 4-6 weeks

Designed in USA and Austria.  
Manufactured in USA.

**USA and Canada**  
Zumtobel Lighting Inc.  
3300 Route 9W  
Highland, NY 12528  
T +1-845-691-6262  
F +1-800-448-4131  
zli.us@zumtobel.com

**zumtobel.us**

If you did not receive your copy of Zumtobel BASYS LED II card,  
please contact us at [zli.us@zumtobelgroup.com](mailto:zli.us@zumtobelgroup.com)

# monumentality:

(mon-yuh-men-tahl-i-tee)

The mentality of affecting positive change by looking for solutions on a large, monumental scale.

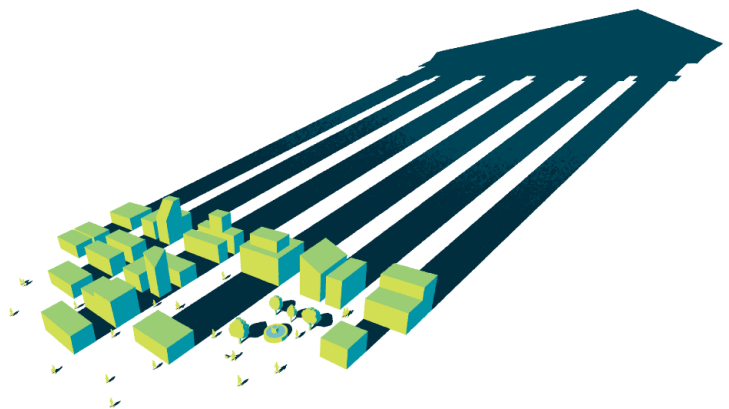
Green building is uniting people, changing lives, revolutionizing business and addressing our world's most pressing problems. And that's monumental. Join us this fall and change your monumentality.



## MONUMENTAL GREEN

WASHINGTON CONVENTION CENTER | WASHINGTON, D.C.  
EXPO: NOV 18-19 | CONFERENCE: NOV. 18-20

Join us for the largest sustainable building event in the US and experience the contagious buzz first hand with over 20,000 industry professionals, a world-class expo hall, over 200 educational sessions and the world's leaders in the green movement.



## NEW TIMES, NEW METRICS



Anyone now entering lighting design might mistakenly think that change is a steady constant of the industry, as evidenced by the number of new LED products and technological developments that are continually coming to market nowadays. But anyone who has been in practice for more than a decade or so knows that change in the lighting industry, especially when it comes to metrics and standards, is a long, involved process often riddled with committee meetings and public comment periods. It's like trying to turn a battleship 180 degrees. You wouldn't think it would take such a long time, but it does.

Another battleship is starting to turn. Over the past few months, there has been a discussion about adopting a new color metric as outlined in, *TM-30-15, IES Method for Evaluating Light Source Color Rendition*. Borne out of the need for a better standard that would address the specific color issues associated with LEDs, the proposed metric's most significant feature is the introduction of 99 color-evaluation samples, as opposed to the 14 (eight pastels and six additional hues) currently used for the industry's present guide, the Color Rendering Index (CRI).

Color is a core issue, and has always been an important topic of industry discussion. With the launch of our new website in June, ARCHITECTURAL LIGHTING has assembled a page entitled "Light and Color 101"—[archlighting.com/tag/color](http://archlighting.com/tag/color)—that serves as a directory of our articles on the subject. ARCHITECTURAL LIGHTING's most recent color discussion was in the last issue: "The Evolution of White Light," [bit.ly/AL\\_WhiteLight](http://bit.ly/AL_WhiteLight).

There are many different aspects of color relevant to the discussion, such as consistency, temperature, rendering, difference, appearance, shift/stability, colorfulness, and matching. It's a complex topic, and the introduction of solid-state lighting (SSL) hasn't simplified matters. But what SSL has done that is of great benefit to lighting as a whole is that it is forcing designers and manufacturers to re-examine important technical issues like this one.

And that is what the introduction of *TM-30*

late this summer has provided. Everyone is talking about it. The U.S. Department of Energy offered two webinars in September that are now available on their website: [energy.gov/eere/ssl/solid-state-lighting-webcasts](http://energy.gov/eere/ssl/solid-state-lighting-webcasts). Randy Burkett, Kevin Houser, and Michael Royer presented "Quantifying Color Rendition: A Path Forward" at the IALD's Annual Enlighten Americas conference in Baltimore on Oct. 8–10. Upcoming lighting trade shows in Europe, such as LuxLive in London, are also set to hold seminars on the subject.

There is still debate about whether the new metric addresses the shortcomings that have plagued CRI, a system that goes all the way back to the Commission Internationale de l'Eclairage chromaticity diagrams of 1931 and 1964. But what is sufficiently important is that the underlying research projects, and discussions at the committee level, have progressed to a stage where the information can be disseminated publicly: The Illuminating Engineering Society has released the new metric as an official technical memorandum.

The introduction of *TM-30* is important for the industry as whole. It reflects advancements that have far-reaching implications for research and product development. This much we know for certain. But the real question now is how will the discussion progress? Will there be more research and testing? How will the design community react and participate? How will manufacturers incorporate this data in their technical product sheets? Will *TM-30* lead the way to a completely new, industry-accepted standard, or will it simply become a marketing tool?

I hope the industry will give *TM-30* a fair shot and allow all parties involved to continue their meaningful and informative discussions. Too much work has already gone into the metric to let it flounder on the shelf.

Elizabeth Donoff  
Editor-in-Chief  
[edonoff@hanleywood.com](mailto:edonoff@hanleywood.com)

**Color consistency makes  
all the difference.**

**The right light  
makes it easy.**

---

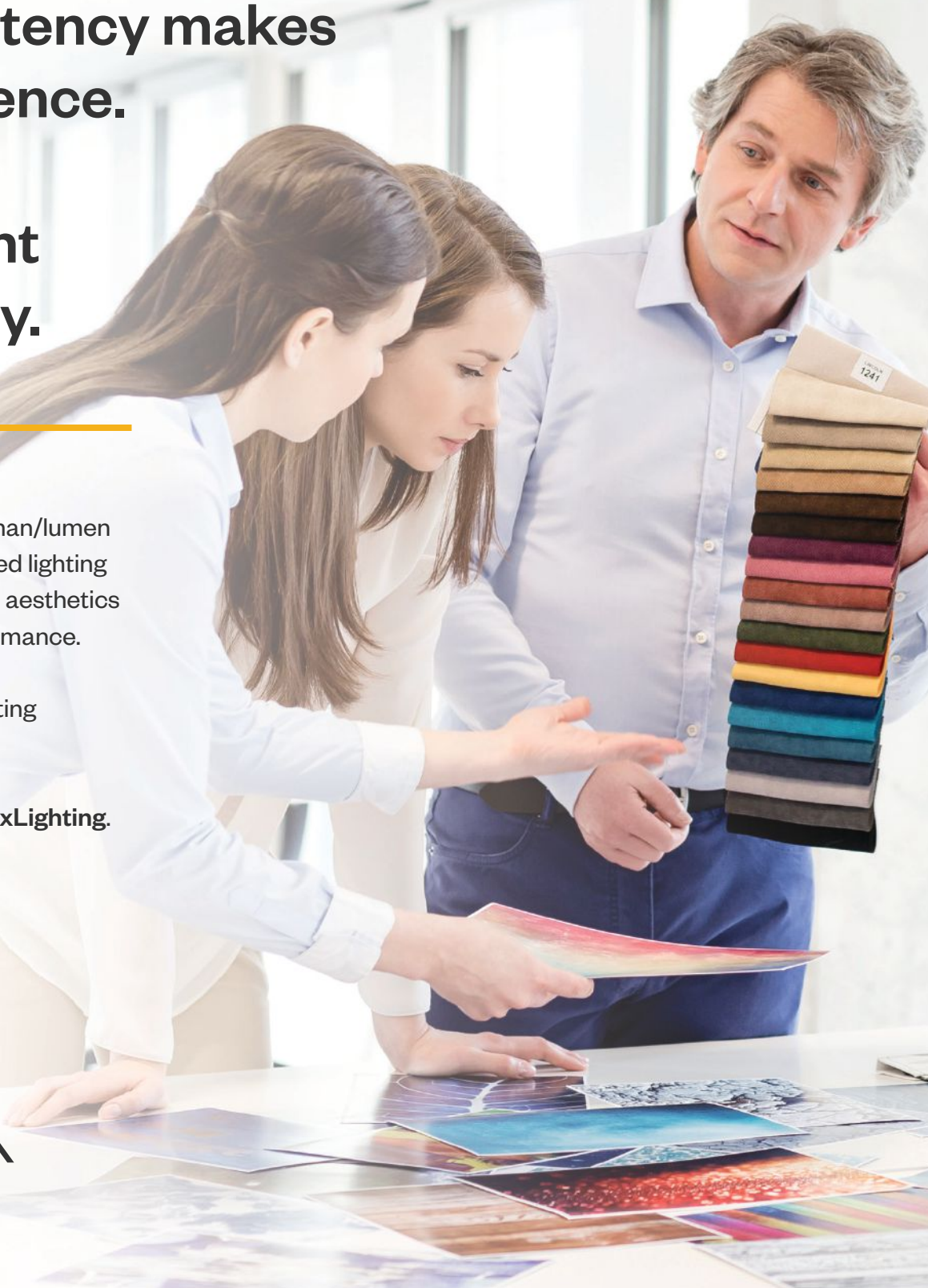
Amerlux understands the human/lumen connection with unprecedented lighting products that enhance design aesthetics and elevate workspace performance.

Discover the new value of lighting  
at [amerlux.com](http://amerlux.com).

Follow us on Twitter [@AmerluxLighting](https://twitter.com/AmerluxLighting).



**amerlux**  
Passion. Power. Performance.





**NIGHTSCAPE 2050**

Tokyo-based lighting studio Lighting Planners Associates has organized “Nightscape 2050—A Dialogue between Cities.Light.People in the Future.” With stops in Berlin, Singapore, Hong Kong, and Tokyo, the exhibit draws on the firm’s work in urban lighting and the nightscape, and examines how new lighting technologies are shaping our world and the way we live. Read the full story online: [bit.ly/AL\\_LPAexhibit](http://bit.ly/AL_LPAexhibit). •



Toshio Kaneko/Lighting Planners Associates



## SMARTCAST<sup>®</sup> TECHNOLOGY. LIKE AN ASSISTANT THAT FOLLOWS YOU EVERYWHERE, DIMMING EVERY WASTED LUMEN.

It's ironic: lighting controls are supposed to make our lives easier but they can be a pain to install. That's why we created SmartCast<sup>®</sup> Technology, with wireless controls and sensors designed right into our fixtures, all provisioned with our simple OneButton<sup>™</sup> Setup. Get more information about how our SmartCast<sup>®</sup> Technology gets controls under control at [cree.com/SmartCast](http://cree.com/SmartCast).

**CREE** 



### AN EXPLORATION OF THE VISUAL SENSES AND PERCEPTION

"With this book, I aim to, in my own way, pass on the teachings of light that I once dedicated myself to and have used throughout the years," writes lighting designer Svante Pettersson in *See the Light*, a 310-page book published earlier this year by Arvinius+Orfeus. Part personal essay, part technical guide, Pettersson describes his philosophy of light, which has been shaped by his Nordic upbringing and surroundings in Sweden. Through the book's 14 chapters, he maps out the ways in which light shapes our senses and visual perception. [bit.ly/AL\\_SeeLight](http://bit.ly/AL_SeeLight). •



# MORE BRILLIANT THAN EVER



## MEGALUM

### DOWNLIGHT | CYLINDER

High lumen downlighting up to 16,500 lumens

Designed for ceiling heights up to 60ft and above, the Prescolite Megalum is the highest output LED downlight (MD8LED) and cylinder (MC10LED) in the market.

With an extensive variety of outputs, beam angles, kelvin temperatures, and control options, the Megalum can be configured for a multitude of high ceiling applications.



<http://www.prescolite.com>



Bob Jones University- Greenville, SC



**LED Wing-Pendant Light**

30W-54W, 120lm/w, ETL/DLC  
 4ft, Linear Linkable  
 0-10V Dimming Optional



**LED Vapor Tight Light**

24W-60W, 100lm/w, ETL/DLC  
 2ft&4ft, 0-10V Dimming Optional



**LED T8 Tube Light**

2ft:8W  
 4ft:13W/15W/16W/18W/20W  
 110-130lm/w, UL/DLC



**LED Flat Panel Light**

36/54W, 100lm/w,  
 UL/DLC, 2\*2ft, 1\*4ft&2\*4ft,  
 0-10V Dimming Optional



**LED High Bay Light**

30-200W, 100lm/w  
 ETL/DLC Pending,  
 0-10V Dimming Optional



**Guangzhou LEDIA lighting Technology co.,Ltd**

Add: No. 1, XianKe 1st Road, Huadong Town, Huadu Dist., Guangzhou, China  
 E-mail: steven.deng@ledialighting.com | Tel:0086-20-37706057  
 US Add: 8 Bond St Ste 301 Great Neck, NY11021  
 E-mail: sales@ledialighting.com | Tel: +1-516-504-8000  
 www.ledialighting.com

**“International companies adapt their designs and services to the international marketplace by modifying the product they design to fit other regions. Global companies integrate local market feedback into their business platforms from the beginning through the entire value chain. It’s a fundamentally different way of operating.”**

—Kevin Maddy, CEO, Americas Region, Zumtobel Lighting



**ZUMTOBEL LIGHTING RENEWS ITS FOCUS ON THE AMERICAS**

Zumtobel Lighting has been busy. Under the guidance of Kevin Maddy, who joined the company in April 2014 as CEO of the Americas Region, the lighting manufacturer has taken several steps to restructure and solidify its presence in North and South America. This includes a \$10 million investment to expand operations, upgrades to the Highland, N.Y., facility (above), and opening an office in Santiago, Chile. Read our complete interview with Maddy at [bit.ly/AL\\_ZumtobelAmericas](http://bit.ly/AL_ZumtobelAmericas).

Zumtobel Lighting

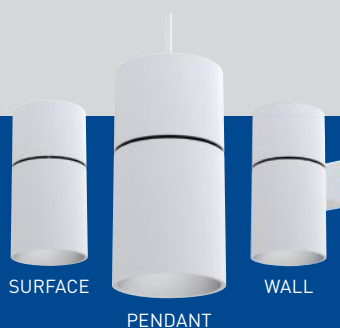


# GRAVITY™

## Performance **WRAPPED** in Style

*Intense Lighting now offers the performance of the Gravity downlight in an elegant cylinder fixture. Available in 6 and 8 inch surface, pendant, and wall mount styles. This latest cylinder delivers up to 7000lm and shares all the configurability of the feature rich Gravity Family.*

- Unified light engine and trim profile across the entire Gravity family
- 3 Step Macadam binning for greater color consistency
- Field serviceable optic options in spot through flood
- Lumen packages from 1000lm/ 12W to 7000lm/ 90W
- Standard, slope ceiling and smart canopy
- Discrete 4mm flange reveal



# LIGHT YEARS AHEAD

LEDs provide brighter, longer lasting and energy efficient solutions for connected lighting. TE Connectivity (TE) offers LED lighting manufacturers ground-breaking connectivity solutions for high brightness LEDs, innovative COB holders, ESD protection, driver protection and circuit protection devices designed to be your solution for LED applications.

See how TE is helping LED lighting designers maximize the potential of modern lighting systems at [te.com](http://te.com)

©2015 TE Connectivity Ltd. All Rights Reserved. EVERY CONNECTION COUNTS, TE, TE Connectivity and the TE connectivity (logo) are trademarks of the TE Connectivity Ltd. family of companies.



EVERY CONNECTION COUNTS



 **Signcomplex** | We bring innovation and give inspiration

## New Type MT8 Tube

**Signcomplex obtain the first CB certificate for LED Tube from TUV SUD**

- Longer life, at least more than 4 years fluorescent.
- 70%~80% Energy - saving over Fluorescent tubes
- Solid state, high shock / vibration resistant
- Work without ballast , rats-tfostratsn
- No RF interference, No flickering or buzzing



## light

MIDDLE EAST  
Date: 2015-10-6~8  
Booth No. Z3-G08

## shanghai international lighting fair

Date :2015-9-23~25  
Booth No.B59

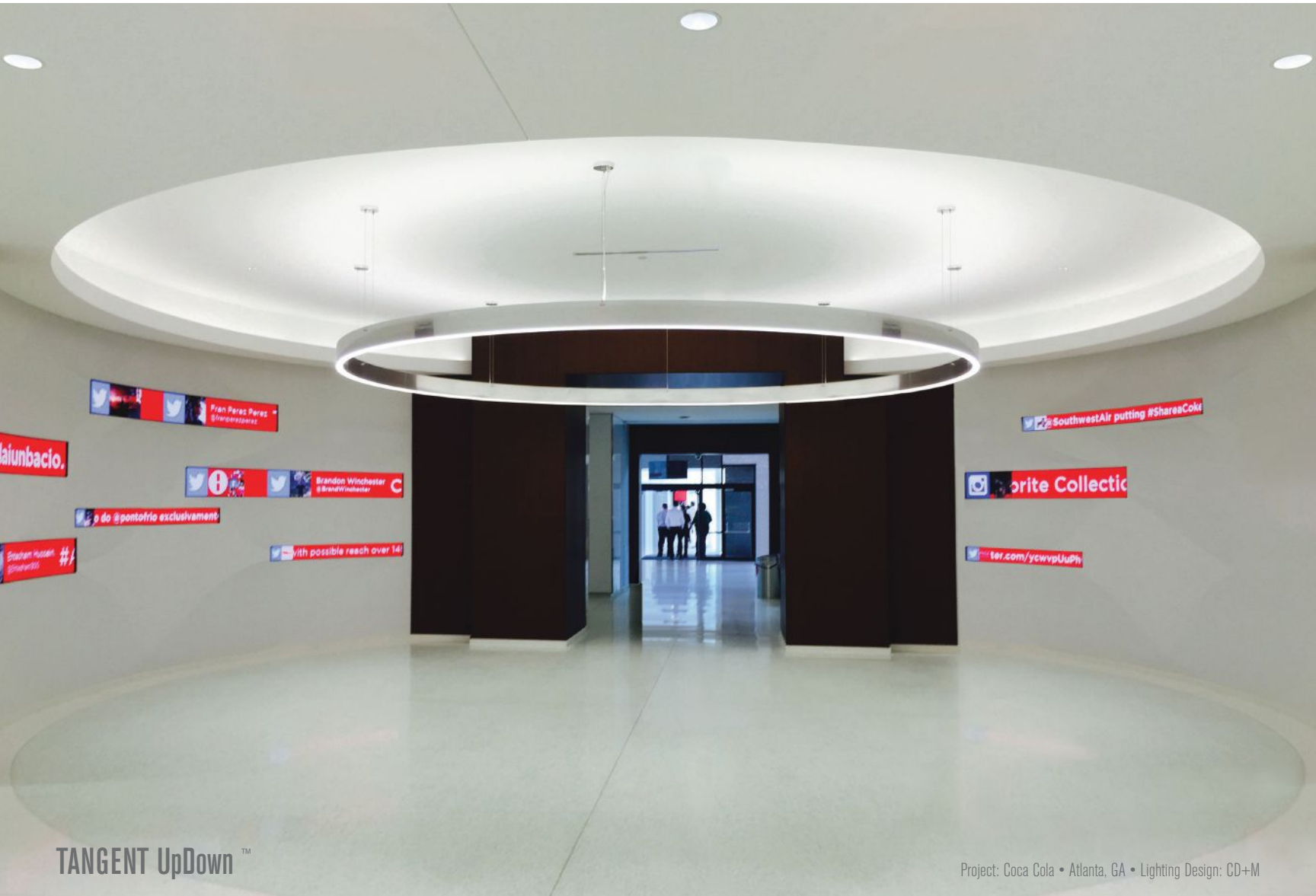


[www.signcomplex.com](http://www.signcomplex.com)  
[marketing@signcomplex.com](mailto:marketing@signcomplex.com)  
phone:+86 755 2760 8650  
fax:+86 755 2760 8651



# VOKSLYTE™

Merging the art of metal and the science of light



TANGENT UpDown™

Project: Coca Cola • Atlanta, GA • Lighting Design: CD+M

This beautiful project consists of a VokSLYTE™ custom diameter Tangent UpDown™ circle, in a special polished aluminum finish. Tangent™ luminaires are completely custom made for any application, circles, ellipses, curvilinear and rectilinear shapes. Utilizing 100% solid-state CREE light engines and integral dimmable drivers...No remote powersupplies are necessary. Available in direct/indirect (Tangent UpDown™), direct (Tangent Down™) in both pendant and recessed styles. Proving that traditional technologies are still relevant, the seamless perimeter uplight cove is perfectly illuminated with Cathode Lighting Systems' Slim Flexible Cathode Light Strip (FCLS-Slim) in matching 3500°K, [www.CathodeLightingSystems.com](http://www.CathodeLightingSystems.com)

# MayaLED

## Skillful blend of aesthetics & performance

Blending sleek aesthetics, optical performance and energy efficiency with a new slim design, the MayaLED family is ideally suited for site and area lighting applications.

- New LED platform and silicone optical system for maximum efficiency, performance, reliability and precise distribution.
- Increased efficiency and output up to 13,000 lumens.
- Type II-III-IV-V light distribution.
- 4000K standard color temperature with 3500K and 5000K options. 80 CRI.



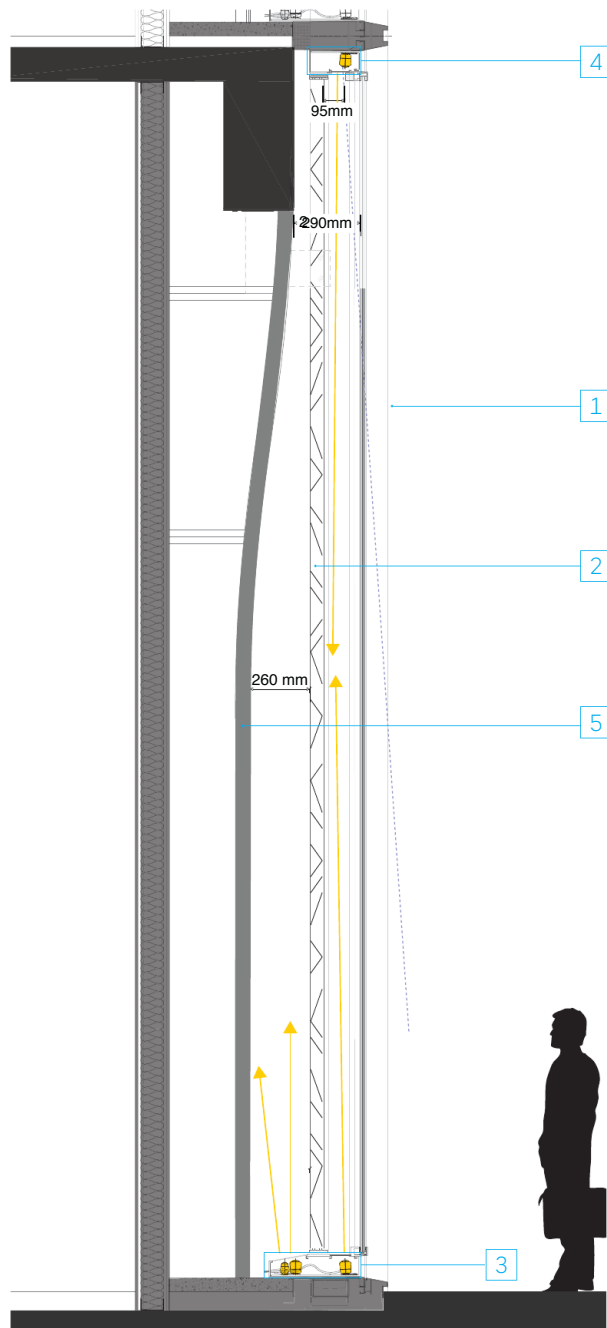
**LUMINIS**®

[luminis.com](http://luminis.com) | [info@luminis.com](mailto:info@luminis.com)

# MICHAEL KORS SHANGHAI FLAGSHIP STORE FAÇADE

text by Elizabeth Donoff

In an upscale Shanghai retail and hotel development called Jing An Kerry Centre sits Michael Kors' new flagship store. To distinguish the street-front boutique from its neighbors in this shopping district, the design team—architect Kohn Pedersen Fox and lighting designer Tillotson Design Associates (TDA)—developed a unique façade that showcases the identity of the Michael Kors brand, while giving it a timeless and universal appeal. “Light was always the main focus for this façade concept,” says Thomas Bergeron, senior associate at TDA. The dynamic composition, which makes the façade look like a luminous fabric, is created by the use of hundreds of thousands of individual, hand-cut, angled, aluminum reflectors.



## Section Through Lower Portion of Curtainwall

- 1 Curtainwall
- 2 Angled, textured aluminum reflectors
- 3 Linear LED wall grazers in pull-out tray: white light fixture in front; RGB color-changing fixture behind
- 4 Linear LED white light wall grazer
- 5 Sloped back wall



Narrow optic wall grazers are located at the top and bottom of each panel and are coordinated with the reflector angles to create a sense of depth using a pattern of light and shadows across the façade. The fixtures at the bottom of the wall assembly sit in a pull-out tray for accessibility.

The design team narrowed 35 concepts down to one, and the designers worked principally in model, at multiple scales, so that they could study the play of light and reflection in the various configurations of the panels. The main challenge was how to create a sense of brightness and sparkle that would read both up close and from a distance without the disturbance of a lot of glare. The façade needs to work both during the day in natural lighting conditions and at night when the panels are illuminated by two different grazing fixtures located at the top and bottom of the entire assembly. The first fixture types are 10-degree 4000K LED grazers that illuminate the top front, the bottom front, and the bottom back of the panels with white light. The second are RGB LED luminaires with a medium beam distribution that create color-changing effects, and which sit behind the bottom grazing fixture. Like a cascade of paillettes on a garment, lighting transforms the façade from an ordinary curtainwall into a luminescent feature. •



# OEM/ODM ONE-STOP SOLUTION

## THAILIGHT

We are professional manufacturer dedicatee on OEM and ODM design and manufacture for Branded Lighting Company & Channel Seller of all the world. We provide you the highest cost-effective LED lighting fixtures.

For all old and new customers, we could provide value-added service under condition,

1. Free OEM service
2. Sell on credit



FLF

**FLOOD LIGHT**

THE HIGHEST  
COST  
EFFECTIVE  
OF  
THE WORLD



Wattage	15W / 30W / 50W / 80W / 100W / 150W / 220W / 300W
Voltage	120~277V AC
Efficacy	90Lm/W



**MORE THAN  
YOUR REQUEST !**



UL file #: E352127

THAILIGHT SEMICONDUCTOR LIGHTING CO., LTD

DongGuan | China T: +86 769 83713867 / 87061601 · F: +86 769 83713167 · W: www.thailight-led.com · E: info@thailight-led.com

The New York Times Building pursued a Window-Management® System with energy efficiency and cost savings in mind. MechoSystems' state-of-the-art SolarTrac® System—paired with the electrical lighting system—is saving up to 25% in energy costs.

# WindowManagement®

## MechoSystems

Design with light.®

T: +1 (718) 729-2020  
F: +1 (718) 729-2941  
E: [marketing@mechosystems.com](mailto:marketing@mechosystems.com)  
W: [mechosystems.com/newyorktimes](http://mechosystems.com/newyorktimes)  
@mechosystems

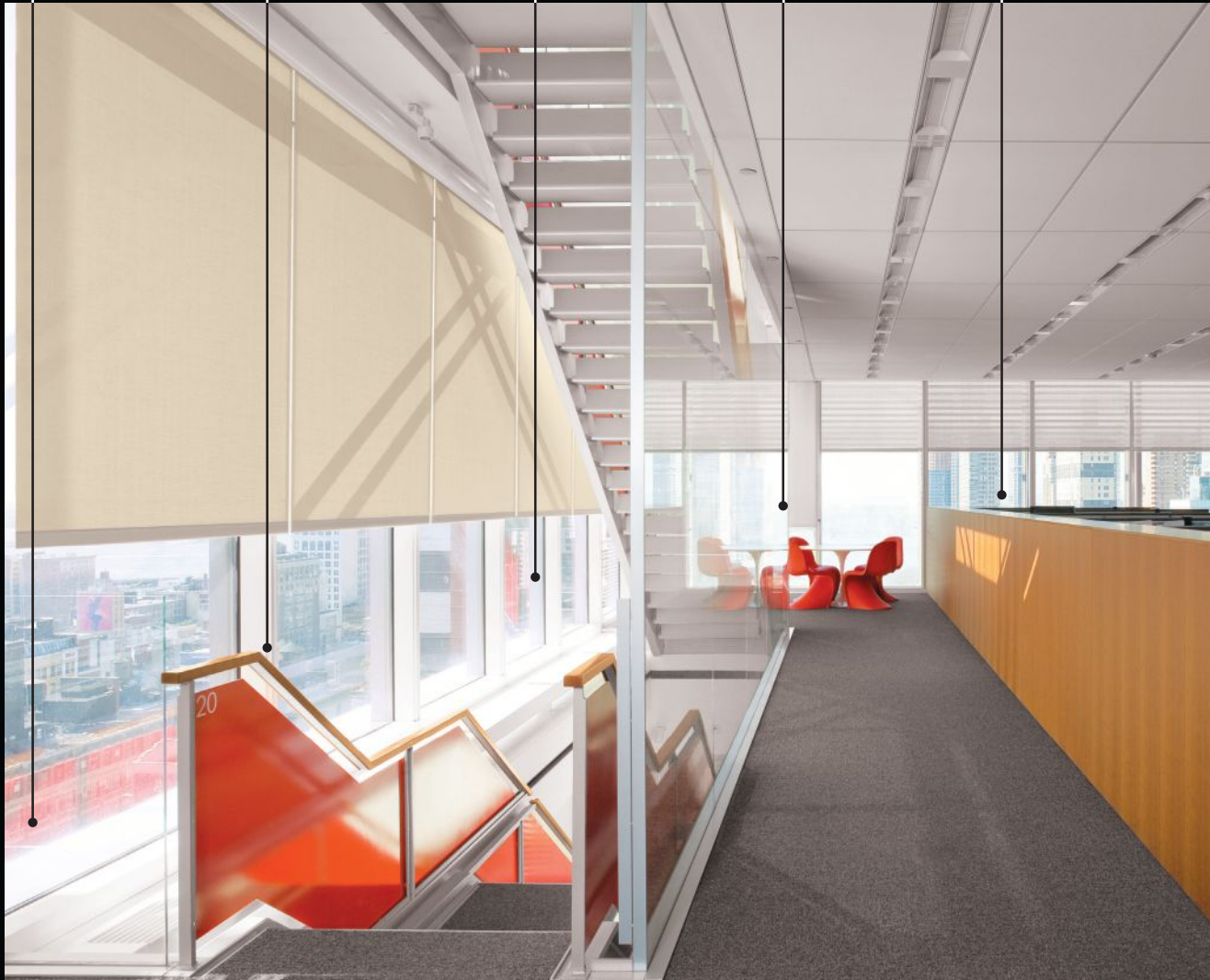
Offer views to the outside.

Provide daylight harvesting.

Control the sun's glare.

Limit solar radiation.

Manage contrast ratios.



## SOLVING FOR MARCUS

$$\frac{x}{y} = Q$$

ARTISTRY  
EFFICIENCY

## SOLVING FOR JOANNA

$$\frac{x}{y} = Q$$

CREATIVITY  
CODE

## SOLVING FOR ANTONIO

$$\frac{x}{y} = Q$$

WITHOUT LIMITS  
WITHIN BUDGET

## SOLVING FOR LIGHT

elliptipar®  
tambient®



THE LIGHTING **QUOTIENT**®

[www.TheLightingQuotient.com](http://www.TheLightingQuotient.com)

## IN FOCUS



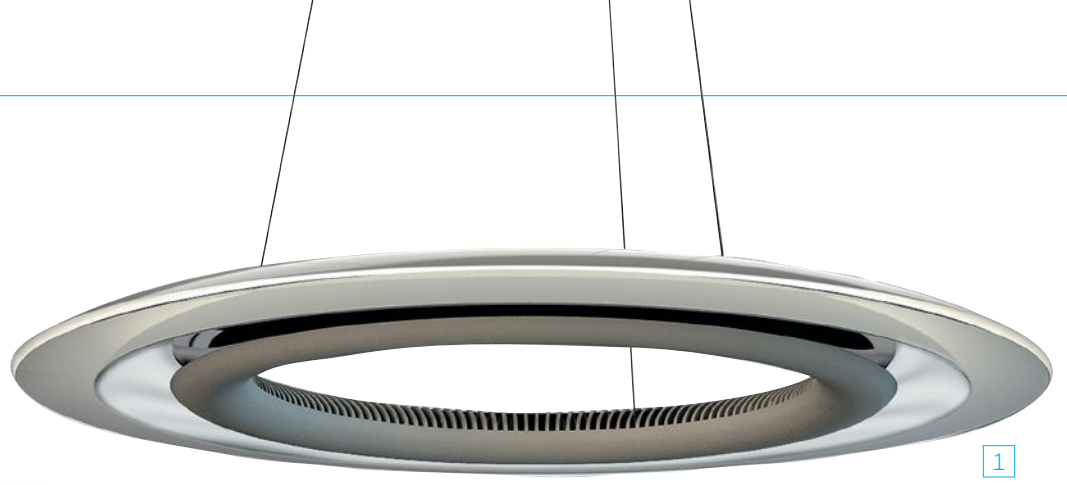
The peened aluminum reflectors used for the façade are individually positioned to specific angles to maximize the grazing effect and reflective quality of the light.

### DETAILS

**Project:** Michael Kors Shanghai Flagship Store Façade, Jing An Kerry Centre, Shanghai • **Client:** Michael Kors Store Design Team, New York • **Architect:** Kohn Pedersen Fox, New York • **Lighting Designer:** Tillotson Design Associates, New York • **Façade Dimensions:** 5,000 square feet • **Project and Lighting Costs:** Withheld (per client's request) • **Code Compliance and Watts per Square Foot:** Not applicable

### MANUFACTURERS

**EcoSense Lighting:** 10-degree-beam 4000K grazer for white lighting effect at façade top front, bottom front, and bottom back • **Philips Color Kinetics:** eW Fuse Powercore, RGB LED, with 30-degree by 60-degree optic for rear silhouette dynamic color-changing effects • **Alano:** Textured mirror-finish aluminum reflectors



# LED SPOTLIGHT

text by Hallie Busta



8

**1 F+P 550, Louis Poulsen** • In 2009, London-based architecture firm Foster + Partners worked with Louis Poulsen to design the F+P 550 LED pendant for corporate interiors. The manufacturer recently updated the fixture, making it available in 3000K at 49 lumens per watt. The fixture has a mouth-blown opal glass shade with a matte anodized aluminum reflector, a metalized polycarbonate light conductor, and a heat sink, all suspended via PVC cords from a decorative ceiling canopy. • [louispoulsen.com](http://louispoulsen.com)

**2 Luxeon CoB Core Range (Gen 2) LEDs, Lumileds** • Lumileds has updated its Luxeon chip-on-board (CoB) LEDs. The additions come in 2200K, 2700K, 3000K, 3500K, 4000K, 5000K, and 5700K at CRIs of 70, 80, and 90. They offer color rendering within a three-step MacAdam ellipse, and a lumen output 10% higher at the same drive currents as the company's existing CoB LED series. • [lumileds.com](http://lumileds.com)

**3 Ultra Glass PAR LED Lamps, Sylvania** • The company's new lamps replace their halogen counterparts in PAR20, PAR30LN, and PAR38 models with a glass body and a full optic. They come in 2700K, 3000K, and 5000K at CRIs of 81 and 82, depending on the model, and with 15-, 25-, and 40-degree beam angles. The lamp family is UL wet-listed. • [sylvania.com](http://sylvania.com)

**4 1x4 LED Retrofit Kits, Litetronics** • Litetronics is adding a 1x4 option to its interior LED retrofit kit line for converting existing T8 and T12 linear fluorescent troffers, striplights, and wraps for use with LED tubes. The one-piece housing consumes 32W and holds two 4'-long LED tubes on a 4"-wide metal platform. They can be placed end-to-end, strung individually, or used as a standalone fixture. For use with 120V to 277V systems, the 32W kit comes in 3500K, 4000K, and 5000K. • [litetronics.com](http://litetronics.com)

**5 L100-G3, Electrix** • This 1"-square linear LED luminaire is designed for architectural cove and pocket applications. Available in 3000K, 3500K, and 4000K with a CRI of 85, the fixture delivers up to 354 lumens per foot. In 12" to

96" lengths, it can be wired in a series up to 12' long. Its extruded-aluminum housing has a satin anodized finish. • [electrix.com](http://electrix.com)

**6 LSL Series, LaMar Lighting** • The LSL Series recessed LED lensed luminaire is designed for use in offices, hospitals, and schools with grid ceilings. The fixture is available in 3500K and 4000K at a CRI of 84-plus. Fitted with field-replaceable LED modules, the luminaire comes in a 2x2 and a 2x4 format with either a prismatic haze or a frosted acrylic lens. Zero-to-10V dimmable, the fixture is compatible with 120V to 277V systems. • [lamarlighting.com](http://lamarlighting.com)

**7 24,000 and 48,000 DLE Intelligent High Bay, Digital Lumens** • This high-bay LED fixture combines direct and indirect light sources via four independently aimable light bars, and features version 2.11 of the company's LightRules energy management software. Available in 4000K and 5000K with a minimum CRI of 70, the energy tool is offered in the 24,000- and 48,000-lumen versions of the fixture. It has efficacies of up to 106 lumens per watt and is IP52-rated. • [digitallumens.com](http://digitallumens.com)

**8 FGP Path Light, Landscape Forms** • Designer Francisco Gomez Paz crafted this geometric, surface-mounted pathlight for Landscape Forms with three stems that rise from its base to create triangular openings through which light from an LED array housed in its curved top is cast. Available in 3000K, 3500K, and 4000K, the IP66-rated fixture accepts a 100V to 277V power supply. It measures 38<sup>1</sup>/<sub>4</sub>" tall by up to 8<sup>3</sup>/<sub>4</sub>" wide. • [landscapeforms.com](http://landscapeforms.com)

**9 Quantum LP, Minimis** • Austin, Texas-based Minimis is growing its line of high-end, miniature architectural luminaires for installation in panels of up to 1" thick with the 19mm-square Quantum LP. Available in 2800K to 3200K and in 5800K to 6300K, it has a 58-degree beam-angle cutoff reflector. Suited for recessed installation in materials including drywall, wood, steel, tile, and granite, the fixture has a milled-titanium housing. • [minimis.is](http://minimis.is)



9



Let the Drywall be Your Canvas

Lighting shown: TruLine .5A from Pure Lighting - fits within 5/8" drywall

Lightology

[www.lightology.com](http://www.lightology.com)

215 West Chicago Ave. | Chicago, IL 60654 | (312) 944-1000 | (866) 954-4489

# KEEPING IT COOL

Advancements in thermal management promise the most efficient generation of LEDs yet.

text by Timothy A. Schuler

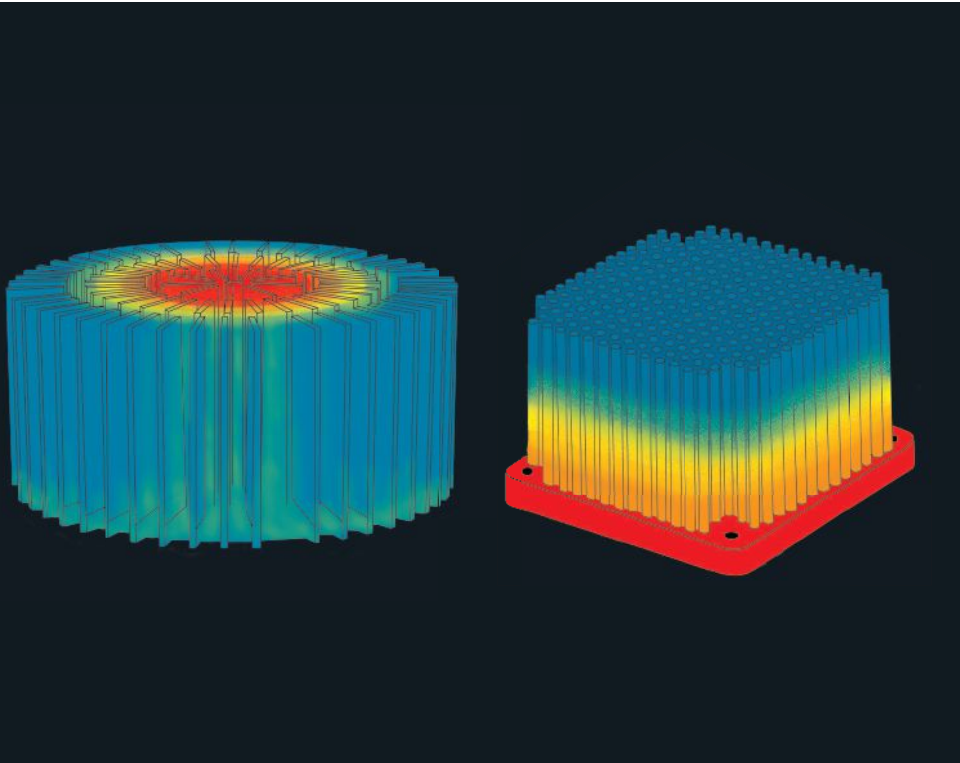
From the tiny electronics in smart watches to the massive server racks in data centers, today's state-of-the-art technologies would fail if they couldn't manage one thing: heat. Solid-state lighting is no exception.

"Heat affects every aspect of an LED," says Chris Reed, director of product for San Antonio, Texas-based Lucifer Lighting, "and each element is affected differently." High heat loads can reduce the efficiency of an LED's phosphors (which convert blue and violet light to white light), degrade the color of optical-grade silicone, and shorten the life span of the diodes. "If you don't manage heat," Reed says, "not only do you get lumen depreciation over lifetime, but you also get color change."

The first generation of LEDs used for lighting, which emerged around the early 2000s, did not manage their heat and essentially "flopped," says Justin Wang, founder and CEO of AXP Lighting in San Francisco. "Some of them worked just three days and [then] went dead."

Over the next decade, original equipment manufacturers (OEMs) quickly learned to introduce heat sinks into their products. As a thermal management technique, these heat sinks worked—the LEDs performed better immediately—but they were heavy, accounting at times for more than 50 percent of a fixture's overall weight. This resulted in increased material consumption, higher shipping costs, and bulkier designs that interfered with lumen output, says Tim Rider, a senior global portfolio manager at Philips.

Today, the options for thermal management are far more numerous and sophisticated. The result is a wave of lighter and sleeker fixtures, and, in some cases, completely new form factors.



Many LED fixtures use heat sinks with fins in a radial pattern (left) or in a grid layout (right), which is also called a pin fin design. The additional surface area of the fins helps dissipate heat from the LEDs.

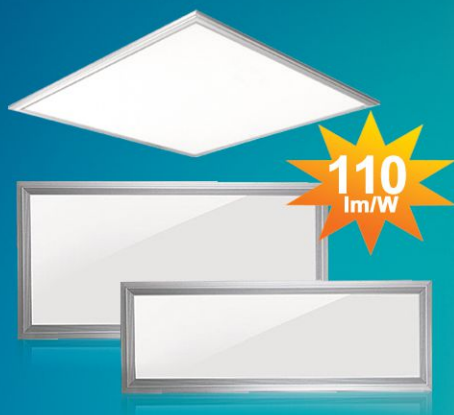
## MATERIAL REVIEW

In 2008, the U.S. Department of Energy announced the L Prize, a technology competition that included a \$10 million cash prize for the company that could develop a 60W replacement A-lamp with a life span of 25,000 hours. Philips won with a then-new type of aluminum heat sink that had fins to increase surface area and heat dissipation, and set a precedent for new lamp form-factors and heat-sink architecture.

Many heat sinks continue to utilize fins, often in a radial pattern or in a grid layout, the latter of which is known as a pin fin design. Aluminum also remains popular for its conductivity, light weight, and low cost relative to other metals, such as copper. More recently, manufacturers have employed high-quality alloys, such as forged aluminum, to create heat sinks with more complex shapes.

Companies are also experimenting with ceramics, thermally

# YES! WE CAN.



**1'X2'**  
40W | 50W

**1'X4'**  
40W | 50W

**2'X4'**  
50W | 63W



## Choose Us

- ◆ ISO 9001 & 14001 certified factory
- ◆ Full automatic production line
- ◆ In-house LED packaging  
In-house PMMA extrusion  
In-house power supply manufacturing
- ◆ 5 years warranty

Signage & Outdoor  
Advertising Lighting

Shopfitting  
Lighting

Commercial  
Lighting

## 408-748-8889

2320 Walsh Ave,  
Santa Clara, CA 95051  
Info@rishang-led.com  
jun.huang@ledlamps.com.cn  
www.RS-LED.com  
www.rishang-led.com



## TECHNOLOGY

conductive plastics, and graphite. Ceramics—inorganic, nonmetallic, and noncorrosive materials—are already used in many LEDs because they conduct heat but not electricity. In a typical diode stack, a minimum of three layers separate the chip and the heat sink: a printed circuit board (PCB), a conductor, and an adhesive layer. “[C]eramics eliminate all these layers so there is a significantly reduced potential for delamination,” says Robert Christensen, the North American business development manager for the German company CeramTec, which manufactures heat sinks.

At the opposite end of the heat-sink performance spectrum are thermally conductive plastics, or thermoplastics, which are loaded with a conductive material such as aluminum nitride. Unlike aluminum, they are naturally noncorrosive, which makes them ideal for outdoor applications, where lumen demand is low and weight is a concern. According to Taiwan-based manufacturer Nytex Composite, thermoplastics are also 20 to 30 percent less expensive than aluminum, in part because they are simpler to make.

**“With outdoor lighting, a heat sink becomes a sculptural element because it is the housing.”**

—Gary Trott, vice president of product strategy, Cree

Other companies are using longstanding materials in new ways. Copper, one of the best conductors of heat, is typically too expensive for LED applications, but Reggiani Lighting, based outside of Milan, has combined copper and extruded aluminum to reap the best of both metals. Marketing communication manager Filippo Devoti says the company redesigned its heat sink geometry to have a greater number of thinner fins and thus more dissipating surface.

### THE OVERLOOKED TIMS

One oft-forgotten aspect of an LED’s thermal management system is the thermal interface material (TIM), a hyperthin substance applied between the conductive layer and the heat sink to facilitate heat transfer. Depending on its makeup, this sole layer can cause substantial variance in the heat sink’s effectiveness, Lucifer’s Reed says.

TIMs can come in the form of adhesives, greases, gels, pads, or solder alloys. Greases, which are often silicone based, can degrade over time—as can many of the aforementioned substances. One alternative is Thermal Clad, an insulated metal substrate by German company Henkel. The material is reportedly more resilient and adheres to a heat sink with a pre-applied conductive adhesive tape.

Another option is Hitherm, a super-lightweight flexible material made from graphite. Graphite is the next best thing to diamond, Reed says,



**FINELITE**  
*Better Lighting*

# Recalibrate Your Expectations. Let Your Imagination Soar.



The award-winning HP-4 LED collection lets you weave light into the built environment with a flexibility that minimizes customization and maximizes your control.

- Pendant, recessed, wall and surface mount
- Standard lengths ship in 10 working days
- Custom lengths and configurations available
- Up to 92 lumens per watt



## With The Finelite LED Difference

- 10-year warranty on all components
- L90 (90% of initial light output) for 100,000 hours
- Dimming standard
- Replaceable LED light arrays and drivers

Visit [www.fineliteled.com](http://www.fineliteled.com) for more information



## TECHNOLOGY

because carbon is an excellent conductor of heat. Made by GrafTech, headquartered in Independence, Ohio, Hitherm comes in sheets that are die-cut and then applied to the LED “almost like a sticker,” Reed says.

Because of graphite’s superior conductivity, Reggiani Lighting has started to use the material for the heat sink of some of its fixtures. Devoti says these heat sinks are traditional in shape but perform better than aluminum, which make them worth their higher cost.

### FORGO THE HEAT SINK?

More recently, some LEDs have been marketed as having no heat sink at all. In reality, the heat sink exists but is integrated into the design of the luminaire. For example, the die-cast aluminum body of Lucifer’s CY3-AD downlight serves as its heat sink, while Philips’ 60W replacement SlimStyle A19 uses the LEDs’ circuit board to draw the heat away from the chips. The lamp features 26 LEDs—13 on each side of the circuit board—with generous spacing, which drives its flat form.



The 60W replacement SlimStyle A19 by Philips features 26 diodes generously spaced around the LEDs’ circuit board to draw heat away.

Manufacturers have also turned to convection. Vents cut in the top and bottom of Cree’s 4Flow A19 lamp create cross-flow ventilation that whisks heat away from LEDs. Cree uses the same philosophy for its OSQ Series LED outdoor area light. “With outdoor lighting, a heat sink becomes a sculptural element because it is the housing,” says Cree vice president of product strategy Gary Trott, who is based in Atlanta. “So we [develop] something that is both functional and attractive, and something that integrates with various architectural sites.”

Hong Kong-based Cledos uses both strategic LED placement and convection to control heat in its AirLED lamps, which “are comprised of multiple low-powered chips dispersed and wired in a proprietary process, using air circulation for thermal management,” says COO Eric Steinmeyer. “The resulting physical design uses less raw material and is sleeker, lighter, and more streamlined.”

AXP Lighting’s Filament LED takes an aesthetic approach to thermal management. The 60W replacement lamp features Edison-style lamp filaments made up of 28 individual LED chips mounted to a transparent sapphire substrate. AXP’s sealed lamp is filled with helium, which has a higher conductivity than oxygen and dissipates heat more efficiently.

# INNOVATE WHEN YOU CREATE

Use our unique LED luminaires to create exceptionally distinctive spaces.



Visit [elplighting.com](http://elplighting.com) or call us at (626) 579-0943



## "Hole In The Wall" Series

Cast GRG housing looks like a custom built drywall light niche when installed.

## Exterior Low-Level Floodlights

Wet Location LED options are available in the CP, HITW-EX, LS-EX, LS-EXS & WLS Series.



## Our New LED LS Series!

The trimless little steplight with a powerful wash of light.

## Cove Lights

LED options are available in the CL, CLC, CLLP & CLM Series.



## AK Series

Powerful LED wall washers with up to 8700 lumens.



# K J U

Geometric  
Purist  
Versatile

# selux

[selux.us](http://selux.us)

# GYLED

Shanxi Guangyu LED Lighting Co.,Ltd. is a professional LED product manufacturer in powerful LED lighting products. The main items include LED commercial light, LED outdoor light, LED industrial light and LED explosion-proof light (ATEX) etc.

## LED Street Lights

### Integrated Module LED Street Light



Model: GY8538LD  
Power: 80-240W  
Light Luminous Efficiency: >100lm/w  
IP Rating: IP65

## LED Building and Landscape Lights

### LED Flood Light



Model: GY2917FG  
Power: 30W-70W  
Light Luminous Efficiency: >90lm/w  
IP Rating: IP65

## LED Special Lights

### LED Explosion Proof light (ATEX)



Model: GY402GB  
Power: 140-200W  
Light Luminous Efficiency: >90lm/w  
IP Rating: IP65

## LED Indoor Lights

### LED Down Light



Model: GY230FXTD  
Power: 9W,15W,25W  
Light Luminous Efficiency: >90lm/w



#### SHANXI GUANGYU LED LIGHTING CO.,LTD.

Sales Center (Beijing)  
Tel: 86 10 62113630  
Fax: 86 10 62153948  
Cellular: 86 13466668176  
Email: sales@gyledlight.com  
www.gyledlighting.com



GYLED provides OEM services with the support of its professional R&D and technical departments.

## TECHNOLOGY

Importantly, the lamp only generates a small amount of heat in the first place because AXP underdrives its chips by design, running them at about 20 percent of capacity. This means fewer lumens per LED, but AXP makes up for this with a greater number of diodes. "Sometimes people use only one chip and overdrive it at 120 or even 200 percent," AXP CEO Wang says. "If a chip can produce 80 lumens per watt, we only demand about 15 lumens per watt."

### ACTIVE COOLING

For some lamps, passive cooling—through conduction with a heat sink or convection—still may not suffice. When a manufacturer needs to pack a lot of lumens into a small form factor, it can make up the difference with an active cooling strategy, such as using a fan. Some in the industry are skeptical, however, about the reliability of fans and the potential noise they create. Reed says that a fan can reduce the size of the heat sink by up to 90 percent, but if it stops working, "your heat sink is grossly undersized."

However, Reed continues, these are the failings of individual brands, not active cooling as a whole. "A lot of manufacturers went out and didn't do their homework," he says. Lucifer uses German manufacturer Ebm-Papst's high-performance fans, which run at 7 decibels—"about the same noise level of someone sleeping in an ultraquiet room," he says.

U.K.-based LED Eco Lights recently released a replacement for a high-pressure sodium lamp with a fan that generates less than 0.5 decibels—reportedly the quietest on the market. Using magnetic levitation technology, the fan uses no bearings, which are often the point of failure.

### LOOKING FORWARD

The progress made in thermal management technologies, including the introduction of new materials and form factors, are happening alongside developments in nearly every other aspect of an LED's performance. "These improvements will lead to things that have never before been possible," Philips' Rider says.

As thermal management devices become smaller, more efficient, and better integrated into a fixture design, the burden OEMs previously faced of designing around a heat sink may soon become a thing of the past. The possibility, Rider says, of "[creating] the same light effect and the same experience, but with a much smaller form factor or with a completely new design is exciting." •

## RESOURCES

"Understanding Heat Transfer Mechanisms in Recessed LED Luminaires," by Tianming Dong and Nadarajah Narendran, *Ninth International Conference on Solid State Lighting, Proceedings of the SPIE*, 2009. Available at: [bit.ly/1LgVwzz](http://bit.ly/1LgVwzz).

"Thermal Management Solutions Utilizing High Thermal Conductivity Graphite Foams," by James Klett and Bret Conway, *Society for the Advancement of Material and Process Engineering Journal*, 2000. Available at: [1.usa.gov/1OC86K3](http://1.usa.gov/1OC86K3).

"Voids in Thermal Interface Material Layers and Their Effect on Thermal Performance," by Arun Gowda, *Proceedings of the Sixth Electronics Packaging Technology Conference*, 2004. Available at: [bit.ly/1Vm80oO](http://bit.ly/1Vm80oO).

"Is the Thermal Resistance Coefficient of High-Power LEDs Constant?" by Lalith Jayasinghe, Tianming Dong, and Nadarajah Narendran, *Seventh International Conference on Solid State Lighting, Proceedings of the SPIE*, 2007. Available at: [bit.ly/1jqIKTO](http://bit.ly/1jqIKTO).

**MIRROR-LUX<sup>®</sup>**

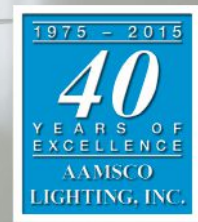
# FORTE

This decorative, LED illuminated mirror is designed with side glass walls and perimeter backlighting, creating a three dimensional aura of light.

This mirror can be customized to most specifications.

Sensor activation and intensity options are available.

*May We Build One for You?*



## **AAMSCO LIGHTING, INC.**

100 Lamp Light Circle  
Summerville, SC 29483

1-800-221-9092 • Fax 843-278-0001

[www.aamsco.com](http://www.aamsco.com)



THE INTELLIGENT ALTERNATIVE SOURCE<sup>SM</sup>

**Please visit us at  
Light Show West in Los Angeles  
Booth # 914**



JIUZHOU  
GREEBLE

# Top-10 LED lighting manufacturer in China

Commercial lighting | Residential lighting

Greeble LED PAR lights

Smooth dimming from 10% to 100%

Highly compatible with various dimmers

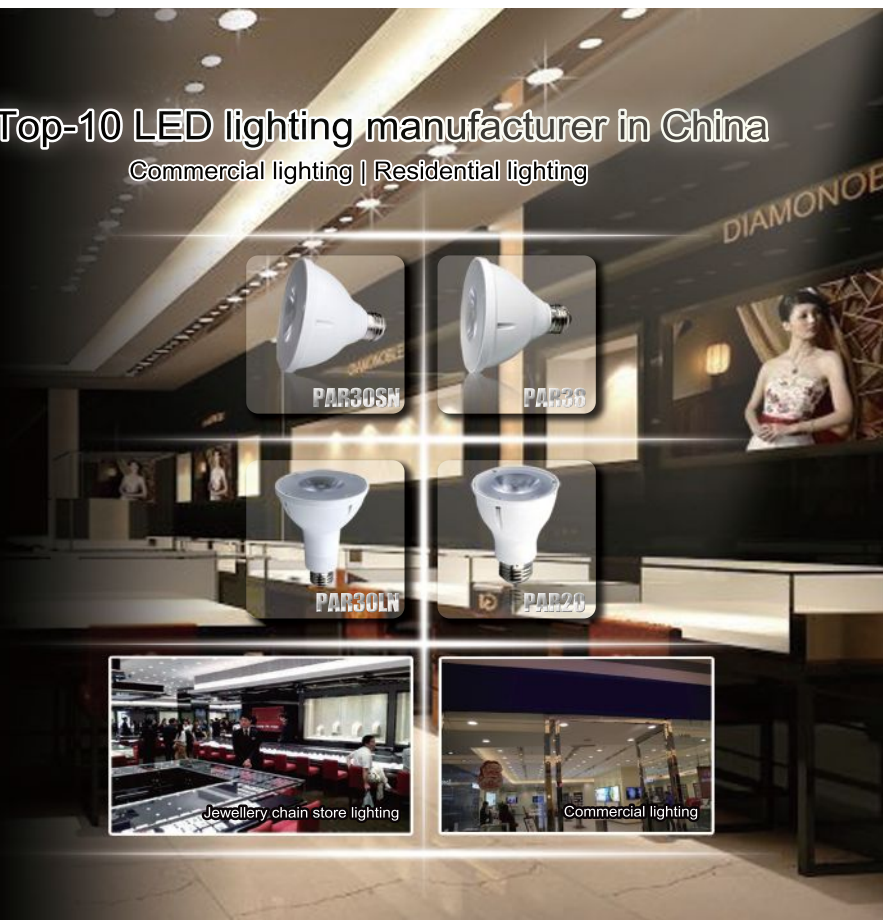
Spot beam angle options of 24° and 36°

Long lifespan of 25,000 hours, 3 year warranty

Model	Watt	Lumen	CBCP
JZPAR20	8W	450lm	2050/1200cd
JZPAR30 Short neck	9W	510lm	2850/1700cd
JZPAR30 Long neck	16W	950lm	6000/3100cd
JZPAR38	17W	1100lm	6500/3600cd



Tel:86-755-26947631 Email: tango.liu@scjz-led.com  
www.jiuzhou-intl.com www.scjz-led.com



Aesthetics and performance  
Fluorescent & LED

**CENTERA™**  
fully luminous series

Centera™ high transmission luminaires offer unique and modern design, showcasing a stunning, fully luminous panel. An offering of six combinations of center and side panels gives designers numerous options to create unique looks.

design friendly | energy friendly



Premium direct luminaire  
Fluorescent & LED

**ALTUS+™**

Altus+™ is available with either our exclusive wide aperture perforated metal baskets or high transmission lenses, and provides outstanding illumination from a tightly engineered, energy-driven, and architecturally-minded platform.

Simkar is proud to offer two new families of classically-inspired luminaires

**D**esigned to blend harmoniously in many environments, Centera and Altus+ provide the reliability, stringent performance, and design options desired for the requirements of contemporary commercial lighting projects.



For more information, visit  
[www.simkar.com/led](http://www.simkar.com/led)  
or call 800 239-5267

**SIMKAR**  
CORPORATION  
Progress and Innovation



## PANEL LYTE FIXTURES INTEGRATED LED SOLUTIONS

[www.acolyteled.com/panellytes](http://www.acolyteled.com/panellytes)

The Panel Lyte is a high brightness, ceiling mounted LED fixture that fits into any standard dropped ceiling configuration.

- Size is 2'x2' & ultra-thin at 0.43 In
- Six white color temperatures
- Colors: White, RGB, RGBW, RGBA, Variable White, Red, Orange, Yellow, Green, Blue and UV
- Seamless corner joint coverage, no light leak at the corners
- Available in ferrous-free version and safe for MRI rooms
- Ultra-even light spread & high through rate



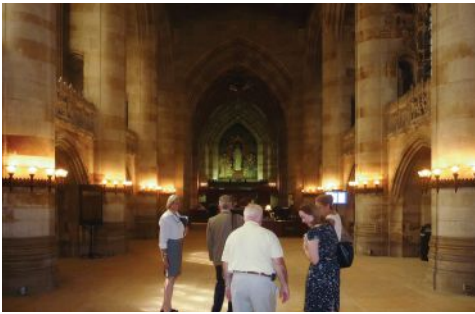




# ILLUMINATING A CATHEDRAL OF LEARNING

*An \$18 million restoration to the nave of Yale's Sterling Memorial Library  
brings James Gamble Rogers' Gothic Revival masterpiece back to life.*

text by Elizabeth Evitts Dickinson  
photographs by Brian Rose



The nave, prior to restoration. It had not been cleaned in 80 years and the walls were blackened with soot and dust (left). The 17W PAR38 LEDs, positioned behind columns and screen walls, highlight the Alma Mater mural and the ceiling (previous spread).

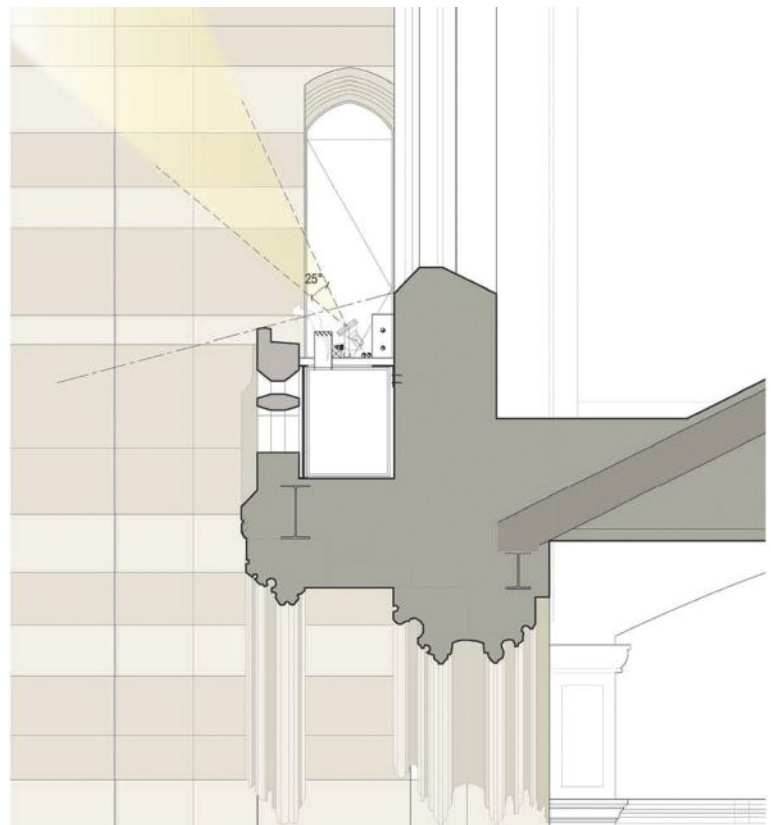
In 1928, architect James Gamble Rogers described his aesthetic intent for a new library at Yale University. Sited on the university's central quadrangle, the building was not only meant to house the school's extensive manuscript collection but to make a grand statement, and Rogers, a graduate of the class of 1889, endeavored to achieve that by designing "as near to modern Gothic as we dared." In doing so, he hoped to give the library "an enduring style" that would stand the test of time.

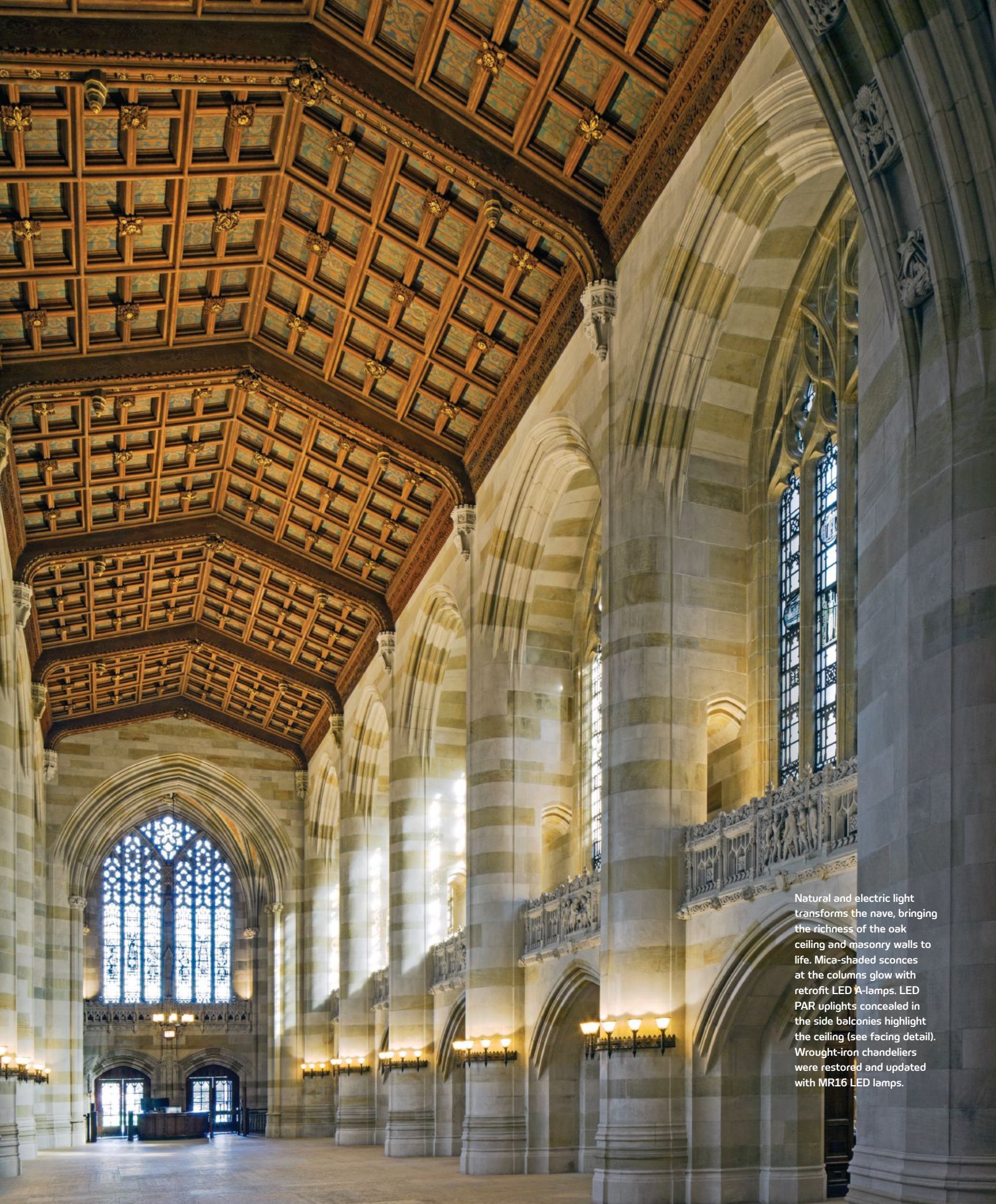
The Sterling Memorial Library, completed in 1930, has indeed endured. Eighty-three years after its opening, Jerry Kugler, principal of New York-based Kugler Ning Lighting Design, stood in the entry hall marveling at its construction and artistry. Rogers had made the entry a nave, mimicking the traditional architecture of a church. Built of load-bearing limestone and sandstone blocks, and with 45-foot-high ceilings, the 150-foot-long space contains hundreds of panes of stained glass created by artist G. Owen Bonawit, ornate metal lighting fixtures by master blacksmith Samuel Yellin, and an elaborately gilded coffered oak ceiling. At the Western terminus, a chancel became home not to clergy, but to the circulation desk. A striking, two-story fresco of a saintly woman surrounded by books and beatific figures, titled *Alma Mater*, graces the west wall.

But time has not been kind to the library's interior. "It hadn't been cleaned in 80 years and the ceiling was barely visible," Kugler says of the pre-renovation space. "It was so cavernous, so dark, that this grand space felt a bit eerie."

Today, the 16,000-square-foot nave again shines, after an \$18 million renovation led by the New York firm Helpern Architects. Helpern was tasked with cleaning all of the architectural surfaces, repairing architectural details, and overhauling the lighting and building systems. The renovation also reconfigured circulation and

#### NAVE LIGHTING SECTION DETAIL





Natural and electric light transforms the nave, bringing the richness of the oak ceiling and masonry walls to life. Mica-shaded sconces at the columns glow with retrofit LED A-lamps. LED PAR uplights concealed in the side balconies highlight the ceiling (see facing detail). Wrought-iron chandeliers were restored and updated with MR16 LED lamps.

services to bring the library into the 21st century. And yet, most of the interventions by Helpern and the lighting design team from Kugler Ning remain hidden from the naked eye. The mantra for restoring this cathedral of learning, both in terms of the architecture and the lighting, was “WWRD”—What Would Rogers Do? “We always said to ourselves, if James Gamble Rogers had been brought back, how would he have done this?” says Helpern Architects founder David Helpern. “Lighting was critical. You don’t readily see the new lighting. Rather you see the old lighting renewed. And that old lighting is supplemented to make a space that now quite literally glows.”

Achieving that luminescence required an incredible mix of interventions, all of which needed to remain unobtrusive. The aim was to give the space the sense that it was radiating with daylight. “One of the things that we always wanted to do was to make sure that natural light from the windows and skylights, the new LED uplighting and fixtures, and all of the existing lights blended together to supplement the notion of daylight,” Kugler says.

To achieve this, Kugler Ning gave the fixtures a dual purpose. For example, in the nave, new custom picture lights illuminate four paintings using 10W-per-linear-foot 2700K LED lamps while also concealing MR16 2700K LED uplights that brighten the ribbed ceiling. Two original Yellin-designed wrought-iron chandeliers with natural mica shades were not only restored, but they were also outfitted to hold—in a concealed fashion—an additional eight MR16 uplights, and one chandelier was added. “It looks like the chandeliers are doing all of the work, but it’s really those uplights,” Kugler says.

The restoration to the original Yellin fixtures, including the chandeliers and a series of sconces, also succeeded in emphasizing the material beauty of the mica shades. Some were damaged, and great pains were made to find comparable mica. Retrofitting the shades with LED A-lamps made them glow too hot and lose their lustrous beauty, so Kugler Ning added diffusion gel behind the mica to create a diaphanous quality. And because they had achieved enough electric light through new, hidden fixtures, they were able to

significantly reduce the lumen output of the light inside the mica shade. “We made them glow like a lantern again, and now you see the materiality that had been previously lost,” says Burr Rutledge, a senior associate with Kugler Ning.

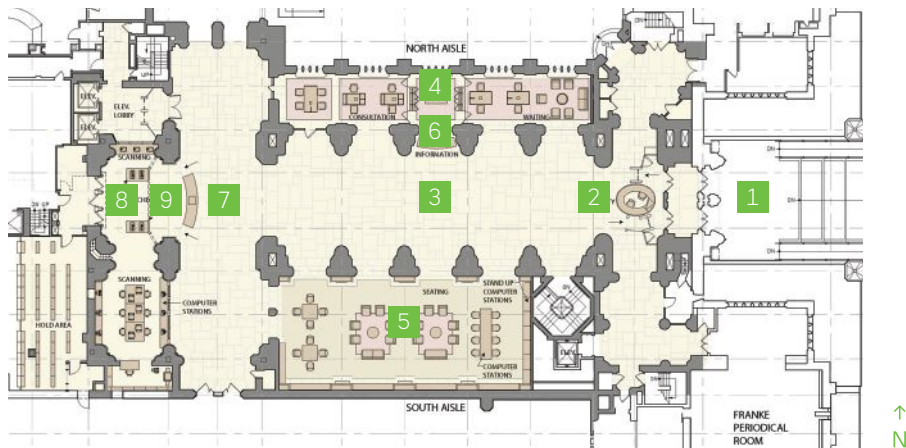
The university’s programmatic requirements for the nave were extensive and that included being able to use it as an event space in the evenings. “There are new lighting controls and presets so at night it becomes a softly lit space,” says Kugler Ning principal Jackson Ning.

Adding supplemental light also required a clever appropriation of previously unused spaces. Running power sources and concealing fixtures in the nave proved a particular challenge, since the structure was built as a 16th century church would have been—with load-bearing masonry walls. Kugler Ning tucked 17W 2700K PAR38 LED uplights in two vacant upper balconies. They cross-aimed the lamps to illuminate the coffered ceiling for the first time. The balconies also house other new infrastructure such as HVAC, so it was a tight squeeze. “We had to modify the track heads to make them fit,” Rutledge says.



In the south aisle study area, Kugler Ning designed new table lamps to complement the restored original pendants designed by Samuel Yellin. A 2700K cove fixture is installed in the skylight cavity.

## PLAN



- |                          |                    |
|--------------------------|--------------------|
| 1 Entrance               | 6 Information desk |
| 2 Security desk          | 7 Crossing         |
| 3 Nave                   | 8 Alma Mater       |
| 4 North aisle study area | 9 Circulation desk |
| 5 South aisle study area |                    |

To further reveal the details and the different textures of Alma Mater, the existing fluorescent fixtures, which raked the mural from below in a greenish hue, were removed and replaced with integrated 17W 2700K PAR38 LEDs positioned behind columns and screen walls to highlight the art from three different positions. “There’s a lot of layers of light going on, but they are hidden from view and not intended to be part of the public realm,” Rutledge says.

In the north aisle, which is now used as a study area, the lighting team removed metal pendant fixtures, which had been added to the space over time but that were not original, and in their place designed a series of new custom pendants. These luminaires were hand-fabricated using the same materials and methods as Yellin’s original fixtures. “Those take their cue from the Yellin chandeliers,” Kugler says. “And we also have uplighting in those to make the glass and the ceiling both glow.”

They also designed task lamps in a bronze finish with opaque shades that house 9.5W 2700K A19 LED lamps. “It’s a modification to a classic library design with diffusion on the top, so it disperses light softly,” Kugler says.

Across the way, in the south aisle, now also a study area, original pendant fixtures were restored, and additional task lamps were added.

The card catalogs that once were the space’s main feature were removed—except for one, a built-in furniture-like piece that was left for ambiance and as a nod to tradition. “It’s evocative of the past generations that used it and it talks about the history of the library while creating a wonderful warm texture,” Helpert says. That warmth is amplified by a subtle wash from the 10W-per-linear-foot 2700K LED picture lights.

Taken as a whole, the vaulted nave shines with a seemingly singular hue. “A great deal of effort went into color matching the LED light so that it blends well and looks incandescent,” Kugler says.

The effect is a bit of a *trompe-l’œil* in that the nave appears to be flooded with natural light. “You get a great reaction when you turn things on and off,” Kugler says. “Right before the opening, we did a walk through with folks and when we turned the electric lights off there was a big ‘Oh!’ because they didn’t realize all of that light was coming from electric light.”

Helpert believes the result is one the original architect would appreciate. “The combination of electric and natural light reveals the beauty that you would not see otherwise,” he says. “It gives you an experience of the space that James Gamble Rogers would truly have welcomed.” •

## Details

**Project:** Restoration of the nave of the Sterling Memorial Library, Yale University, New Haven, Conn. • **Client:** Yale University Office of Facilities, Planning, and Project Management, New Haven • **Architect for the Restoration:** Helpert Architects, New York • **Original Architect:** James Gamble Rogers • **Lighting Designer:** Kugler Ning Lighting Design, New York • **Structural Engineer:** Robert Silman Associates, New York • **M/E/P, FP, IT, and Security Controls Engineer:** AKF Group, Stamford, Conn. • **Acoustics and A/V Consultant:** Jaffe Holden, Norwalk, Conn. • **Materials Conservator:** Jablonski Building Conservation, New York • **Project Size:** 16,000 square feet (gross) • **Project Cost:** \$18 million • **Lighting Costs:** Withheld (per client’s request) • **Code Compliance:** The connected lighting load is 64 percent below ASHRAE • **Watts per Square Foot:** 0.58 (combined ambient and decorative lighting)

## Lighting Manufacturers

**Acuity Brands/Winona Lighting:** 17W 2700K LED PAR38 adjustable floodlights to illuminate Alma Mater • **Aurora Lampworks:** All custom fixtures—restorations and re-creations—throughout project • **Axis Lighting:** 21W/28W 3000K T5 recessed-mounted linear slot fixtures at offices • **B-K Lighting:** Custom canopy-mounted 8W 2700K LED adjustable accent light for dedication plaque • **Cree:** 9.5W 2700K A19 lamps for historic pendants and sconces with mica shades • **Eaton:** LED exit signs • **Edison Price Lighting:** 17W 2700K PAR38 LED track for uplighting hidden in nave balconies • **Electrix:** 10W-per-linear-foot 2700K LED accent light for card catalog luminaires restored by Aurora Lampworks • **Kenall Manufacturing:** 28W 3000K T5 surface-mounted lensed strip for back of house areas • **Manning Lighting:** LED exit signs • **Philips Color Kinetics:** 6W-per-linear-foot 2700K cove fixtures installed in south aisle skylight cavity • **Philips Day-Brite:** 32W 3000K sliding, hanger-mounted two-lamp T8 fixtures at back of house spaces • **Philips:** 10W 2700K MR16 LED lamps • **Starfire Lighting:** 10W 2700K MR16 LED surface-mounted adjustable socket strip at cross-aisle wood screen walls to highlight Alma Mater and uplight ceiling • **TCP:** 5W 2700K G16 LED lamps for smaller historic fixtures with mica shades • **USAI Lighting:** 20W 2700K recessed-mounted downlights at security office



# SECOND EDITION

*A new addition to Staten Island's Stapleton Library creates a 21st-century gathering place while reinvigorating the local community.*



NEW YORK PUBLIC LIBRARY STAPLETON BRANCH

text by Elizabeth Donoff  
photos by Naho Kubota

Public libraries have always played an important civic role, serving both as communal gathering spaces and as vehicles for providing free access to information for all. That dual service, and the responsibility that comes with it, has never been more important as society fully transitions to the digital age. Libraries around the United States need to continue to be that place where anyone can go to check out the latest book, use reference materials, and take his or her kids to story hour. But today's libraries also have to provide computer stations that have Internet access and all types of media in digital formats.

The village of Stapleton on the south shore of the New York City borough of Staten Island is one community that understands the importance of having a library as a public amenity—and what it means when that resource is in jeopardy.

The library, a branch of the New York Public Library (NYPL) system, overlooks Tappen Park, the village's town square. The original building, a one-room structure, was designed by Carrère & Hastings in 1907, the same architectural duo of John Mervin Carrère and Thomas Hastings responsible for the NYPL's Beaux-Arts main branch on Fifth Avenue and 42nd Street in Manhattan. Back on Staten Island, a school and an athletic field were later built behind the library. Like many communities, Stapleton has seen its share of hard times, succumbing to the population shifts and economic challenges that affected most American urban metropolitan areas during the 20th century. The school became run down and then was demolished, with the athletic field turning into a vacant lot. The library, once again, was left on its own.

Fast-forward to 2009. As part of New York City's Department of Design + Construction's Design + Construction Excellence program,

which pairs architects with public building projects, local firm Andrew Berman Architect was tasked with the renovation and expansion of the Stapleton branch library. "We got to look at this project as both a library restoration and as a civic statement," says principal Andrew Berman.

When Berman and his team first visited the site they found a heavily used space—by both children and adults—with everything packed into the one 1,800-square-foot room. The building also suffered from what Berman refers to as "clumsy modernization efforts," but luckily those interventions were only cosmetic and the bones of the original structure and architectural details were still intact. One of the principal features of Carrère & Hastings classical architectural vocabulary were the 7<sup>1</sup>/<sub>2</sub>-foot-tall oak bookcases lining the walls. It was this detail and material selection, with its quality and craftsmanship, that inspired Berman in his design of the new addition.

The new 12,000-square-foot building is a luminous rectangular box that flows easily from the existing structure and is flooded with natural light thanks to the front curtainwall and double-height windows on the rear elevation. Like one big study hall, the main reading room—whose ceiling slopes up from 18 feet 5 inches high nearest to the existing building to 25 feet 6<sup>3</sup>/<sub>4</sub> inches high farthest away, mimicking the grade of the site—is lined with new 7<sup>1</sup>/<sub>2</sub>-foot-tall bookshelves (a nod to the library's originals) and the space is broken down into different work areas. The main circulation desk, which faces the new entry, serves as the visual hinge between the two buildings.

During meetings with the client, the NYPL insisted that spaces be clearly zoned for security purposes: the children, teen, and adult areas

The duo of natural and electric light create an open, airy feeling in the main reading room. The upright portion of the linear pendant fixture highlights the texture and tone of the Douglas fir ceiling and its 11<sup>3</sup>/<sub>8</sub>-inch-deep beams (facing page). Stack lights at the perimeter shelves highlight the stars of the library: the books.







## Details

**Project:** Stapleton Library, Staten Island, New York • **Client:** The New York Public Library, New York • **Architect:** Andrew Berman Architect, New York • **Structural Engineer:** Gilsanz Murray Steficek, New York • **M/E/P Engineer:** IP Group Consulting Engineers, New York • **Lighting Designer:** Cline Bettridge Bernstein Lighting Design, New York • **Landscape Architect:** Wallace Roberts & Todd, New York • **Geotechnical Consultant:** Langan Engineering & Environmental Services, New York office • **Project Size:** 12,000 square feet • **Project and Lighting Costs:** Withheld (per client's request) • **Code Compliance:** Complies with local New York City codes • **Watts per Square Foot:** 0.97

## Lighting Manufacturers

**Bartco Lighting:** 21W and 28W 3000K T5 fluorescent bracket-arm-mounted luminaire for library stacks • **Cole Lighting:** 3000K LED illuminated handrail at entrance • **Kurt Versen Lighting/Hubbell Lighting:** Recessed 32W CFL double wallwasher with 6" aperture at main entry vestibule • **Louis Poulsen:** Decorative globe pendant in the children's room • **Philips Omega Lighting:** Recessed 3000K LED downlight with 4" aperture at entrance canopy • **Pinnacle Lighting:** 28W 3000K T5 fluorescent linear direct/indirect pendant luminaire throughout the project (main reading room, lounge, computer area, and community room)



A view from the children's room through to the new library wing. A decorative pendant was chosen by architect Andrew Berman to tie into the architectural details in the original building designed by Carrère & Hastings.

## LONGITUDINAL SECTION



all had to be separate. The children's room is now the sole occupant of the original Carrère & Hastings building, and the teen and adult areas are in the new wing. Long tables, some with computer terminals and some without, provide more-formal workspaces, while lounges with oversized bean bag chairs create informal spots for reading, listening to music, and browsing. The center bay houses staff offices and a multipurpose community room.

The addition and its architectural features—the Douglas fir ceiling and beams, polished concrete floor, skylights, and expanse of glazing—all take their cues from the existing building, but in Berman's hands, these elements take on a contemporary feel that creates a warm, inviting, and intimate place despite its scale. And while Berman wanted library visitors and staff to have the sense that the building was predominantly day-lit, electric lighting was a necessity, and so he called on Stephen Bernstein, principal of Cline Bettridge Bernstein Lighting Design (CBBLD), who first worked with Berman in 2002–03 on AIA New York's Center for Architecture.

CBBLD's lighting scheme captures the essence of the architecture both in its form and in its material sensibility. CBBLD challenged themselves to see if they could find a single lamp type that could meet the needs of the entire project. "We went around the building looking at what needed to be lit and where we could put the light," Bernstein says. The CBBLD team decided on a 4-foot T5 linear fluorescent. (Since the project started in 2009, LED technology wasn't yet at the forefront of luminaire offerings as it is today.) In the main reading room and community room, the decision translates into a 28W 3000K T5 linear fluorescent direct/

indirect pendant that provides 25 footcandles. These luminaires are suspended from aircraft cable and align with the horizontal mullions of the windows and the vertical wood columns of the front curtainwall. The rectangular form of the fixtures complements the shape of the Douglas fir ceiling beams and the fixture's datum of light becomes another architectural feature. "There isn't much reliance on over-decoration," Bernstein says. "The decoration is the palette of materials that were being used. Our lighting had to respond to that, and in its own way had to be an architectural element within the space."

At the library stacks, which employ a stainless-steel shelving system, bracket arm-mounted fixtures are used with 3000K 21W and 28W T5 linear fluorescents. Here, the goal is to brightly highlight the books.

At the entry, the lighting team departed from the linear fluorescent lamp typology, opting instead for a 3000K LED illuminated handrail, 3000K 4-inch recessed downlights at the canopy, and 6-inch recessed 32W CFL wallwashers in the vestibule. A decorative globe-shaped pendant was selected by the architect for the children's room and is meant to act as a design departure from the linear aesthetic of the new building.

Everyone is thrilled with the new library. This year it was one of five recipients of the second annual NYC Neighborhood Library Awards supported by the Stavros Niarchos Foundation and the Charles H. Revson Foundation. It has even drawn the attention of library professionals who have visited from other towns and states. "We wanted this to be a great public library, not an architectural monument," Berman says. "The comments from the community are the best I could hope for." •

**ImagiLux**  
 ULTRA-THIN LED PANELS  
 SEE [▶ imagiluxled.com/AL](http://imagiluxled.com/AL)

**LIGHT DIRECTORY** ARCHITECTURAL LIGHTING RESOURCE  
[LIGHTDIRECTORY.COM](http://LIGHTDIRECTORY.COM): Products, Catalogs, News, Jobs, Events, iPhone/Android apps

**CDN LIGHTING**  
 Share Professional lighting

**6 Inch Architectural LED Retrofit Downlight**  
 The CDN 6 inch Commercial LED Down Lights are suitable for 100~277V or 120V AC Input with fired-rated Junction box, which delivers high lumens of exceptional 80+ CRI, Lifetime > 50000H with 3000K, 4000K, 5000K ES color temperatures options. It can replace for most manufacturers incandescent, CFL or H.I.D. fixtures with apertures of 6.1" min. to 6.7" max diameter. Easy conversion method and installation.

Huizhou CDN Industrial Development Co., Ltd.  
 T: +86-752-5333 979  
[www.cdn.cc](http://www.cdn.cc) • E-mail: [lami@cdn.cc](mailto:lami@cdn.cc)

Aamsco has patented The ALINEA LED as the replacement for the incandescent lamp which has been discontinued. With an average life of 50,000 hours and a 3 year limited warrantee, it will ensure many years of use without the frequent re-lamping that is typical of incandescent lamps. The ALINEA LED is available in two color temperatures; 2400K with 90CRI and 3500K with 85CRI. The ALINEA LED fits into all existing ALINEA luminaires, as well as in any fixture using a standard S14s socket, with no modifications needed.

Consider the ALINEA Luminaire when choosing a lighting solution in your next design.

[www.aamsco.com](http://www.aamsco.com)




**High Efficiency Flexible Cathode Light Strip**



Cathode Lighting Systems, the leader in long-life modular cold cathode luminaires, introduces our award-winning HFCLS-Slim. At 1-5/8" wide x 2-5/8" tall, it is the smallest cold cathode luminaire in the world. It accepts a variety of our curved, bent or straight cold cathode lamps and offers outstanding brightness, low wattage and a lamp life of 100,000 field-proven hours.

[www.CathodeLightingSystems.com](http://www.CathodeLightingSystems.com)

**SUSPENDED LIGHTING FOR THE MASSES**



The LN Series, with Cree WaveMax™ Technology, features a sleek design, beautiful, more uniform and high-CRI light, all with exceptional efficacy.

**CREE**   
[www.cree.com/wavemax](http://www.cree.com/wavemax)

**Parking, now safer. Pedestrians, more secure.**


Introducing Chaperone

Learn more about Chaperone at [amerlux.com/chaperone](http://amerlux.com/chaperone).




**ACOLYTE**


We Make Solutions



[www.acolyteled.com](http://www.acolyteled.com)  
 Complete Integrated LED Lighting Solutions

**THE MINI 02**  
 high performance LED luminaires

A revolutionary MR16 size light engine that produces more light and a more beautiful beam with less wattage than traditional halogen sources.



Track Series Downlights Recessed Multiples

**CONTECH LIGHTING**  
[www.contechlighting.com](http://www.contechlighting.com)

**DIALux evo – the next generation of lighting design**



DIALux evo offers a completely new approach to specifiers. Room-based light planning is no longer up to date. Now the building in its entirety including the effect from outside is taken into account. And as always: the complete software package is absolutely free of charge. Get your free copy at [www.dialux.com](http://www.dialux.com).

# ARCHITECT

The Journal of the American Institute of Architects

# You Deserve More.



The premiere website for practicing architects—featuring news, project galleries, continuing education, blogs, videos and more is [architectmagazine.com](http://architectmagazine.com).

- > More projects
- > More news
- > More tech
- > More critiques
- > More products
- > More business

Get more today at [architectmagazine.com](http://architectmagazine.com)



hanleywood

**Enhance your lighting knowledge.**  
Visit [TheLightingResource.Eaton.com](http://TheLightingResource.Eaton.com) for information, education and inspiration.

**EATON**  
Powering Business Worldwide

**ARAMIS AR150**  
13,500 lumens from a 6" diameter

The Aram's AR150 is a high power cylindrical pendant LED luminaire developed for interior applications. Its clean aesthetic combines with a luminous efficacy of over 100 lm/W and a lifetime of 86,000 hours – 3 times the longevity of a conventional HID light source.

[luminis.com](http://luminis.com)

**LUMINIS**

PRODUCT GALLERY

**MORE BRILLIANT THAN EVER**

**MEGALUM**  
DOWNLIGHT | CYLINDER

prescolite

**Quantum Vue™**

QuantumVue is an easy-to-use facility management tool you can use on any device. Access building performance and energy data, as well as monitor, control, and optimize a Lutron light and shade control system. Quantum Vue also provides hassle-free scheduling and real-time tuning.

[lutron.com/QuantumVue](http://lutron.com/QuantumVue)

10¢ in 1938 to \$3.2 million in 2015  
That's 41.1% a year for 77 years!

That's also the ROI our customer earns using **NoUVIR LIGHTING**

[www.nouvir.com](http://www.nouvir.com)



**SunDialer®**

The automated system is the advanced solar-tracking controller for small-scale and retrofitted projects. It positions shades on windows based on real-time sky conditions, maximizing personal comfort and views to the outside. And it's highly energy efficient, too.

**MechoSystems**  
Design with light®

T: +1 (800) 437-6360  
W: [mechosystems.com](http://mechosystems.com)

A Simply Superior LED.

8lighting.com

**CCTLED Architectural Mini Adjustable**



Compact 4" aperture LED recessed downlight that delivers a high-performance, versatile and precision aiming solution for architectural lighting. The die-case aluminum profile features an interchangeable optic group with an incorporated heat dissipation system that utilizes a unique friction rotation system to manually aim from up to 30° in the vertical plane and 355° in the horizontal plane.

**TARGETTI**  
www.Targetti.US

**JESSE H. NEAL AWARDS**  
Est. 1955

**Congratulations**

TO HANLEY WOOD'S  
JESSE H. NEAL AWARD WINNERS

.....

Hanley Wood is committed to publishing quality content that serves the information needs of construction industry professionals. Our editors have once again been honored by the most prestigious editorial awards program. Join us in congratulating them.

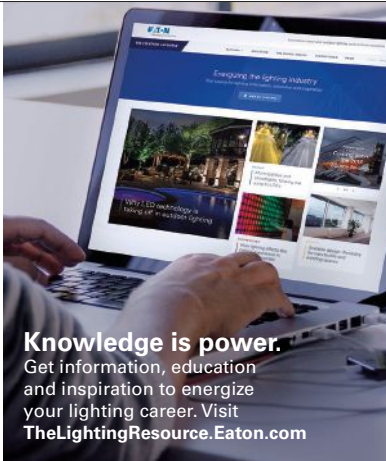
**2015 WINNERS**

- REMODELING  
Best Cross-Platform Package
- ARCHITECTURAL LIGHTING  
Best Media Brand
- ARCHITECT  
Best Use of Social Media
- POOL & SPA NEWS  
Best Technical Content

**2015 FINALISTS**

- MULTIFAMILY EXECUTIVE  
REMODELING
- ARCHITECT  
ARCHITECTURAL LIGHTING
- JOURNAL OF LIGHT CONSTRUCTION
- PROFESSIONAL DECK BUILDER

hanleywood



**Knowledge is power.**  
Get information, education and inspiration to energize your lighting career. Visit [TheLightingResource.Eaton.com](http://TheLightingResource.Eaton.com)

**EATON**  
Powering Business Worldwide




When you need reliability and flexibility, **EVERLINE® LED** drivers and modules give you what you need for just about every LED lighting system application; with well over 1,000 LED products available.

**Universal** Lighting Technologies **Panasonic**

www.unvlt.com Universal Lighting Technologies is a member of the Panasonic Group.

**NECTOR S POWER SYSTEM**

Smart Things Come in Small Packages



te.com >

**TE** connectivity

EVERY CONNECTION COUNTS



**BabyLED®: Don't give an inch.**  
Give ceilings their glory with the shallowest and tiniest recessed LED housing in the world. BabyLED® delivers 1150 lumens of award-winning lighting performance while using less than 2.5" of plenum space. Let your ceilings stand tall, and give them the room they deserve with BabyLED®.

**USA!** Lighting

845-565-8500      usalighting.com



CDN has established itself as a professional lighting solution supplier through years of dedication to commercial lighting since founded.



NEW CONSTRUCTION DOWNLIGHTS



RETROFIT DOWNLIGHTS



ROADWAY LIGHTS



WALL MOUNT LIGHTS



FLOOD LIGHTS



Lami Xu  
T: +86-752-5333 979  
E-mail: lami@cdn.cc  
www.cdn.cc

**There's no place like NoUVIR! There's no place like NoUVIR!**



1995, Debbie Reynolds' Motion Picture Museum, Las Vegas



2015, Hollywood Casino at Kansas City Speedway

**We invented museum lighting!**

For over 20-years, NoUVIR has provided perfect color (CRI 100), perfect control, perfect service, huge energy savings and perfect safety from fading, yellowing, photochemical and photomechanical damage for our world's art and heritage.

**NoUVIR LIGHTING**

**302 628-9933**

[www.nouvir.com](http://www.nouvir.com)

# AD INDEX

PAGE	ADVERTISER
35	AAMSCO Lighting Inc.
37	Acolyte
55	AL Call For Submissions
11	Amerlux
53	CDN Lighting
13	CREE
2	Dial GmbH
5	Eaton's Cooper Lighting Business
5	Engineered Lighting Products
31	Finelite
8	Informa Exhibitions/Greenbuild 2015
17	Intense Lighting
16	Ledia Brands
28	Lightology
7	Lumenpulse
20	Luminis
C4	Lutron
24	MechoShade
3	No. 8 Lighting

PAGE	ADVERTISER
53	NoUVIR
1	Precision Architectural Lighting
15	Prescolite
30	Rishang Optoelectronics Co., Ltd.
33	SELUX
32	Shanghai Sansi Electronic Engineering (Sansitech)
34	Shanxi Guangyu-GYLED
36	Sichuan Jiuzhou Electric Group Co. Ltd.
18	Signcomplex
36	Simkar Corporation
C3	Targetti USA
18	TE Connectivity Ltd.
23	Thailight Semiconductor Lighting Co, Ltd.
25	The Lighting Quotient
C2	USAI
4	Visa Lighting
19	Vokslite
9	Zumtobel

Publisher is not liable for errors or omissions.



# CALL FOR SUBMISSIONS

ARCHITECTURAL LIGHTING invites you to forward new product releases for editorial consideration in our **Annual Product Issue** (Mar/Apr 2016), which is distributed at Lightfair. Luminaires, light sources, and lighting products that have been released after May 2015, qualify. This annual special issue showcases more than 150 lighting products in categories such as:

**This annual special issue showcases more than 150 lighting products in categories such as:**

- Apps (Apps for iPhone, iTouch, iPad, and other smart phone devices)
- Daylighting/Solar Control/Shading Devices
- Decorative Lighting
- Downlights
- Emergency/Exit Lighting
- Fiber Optics
- Direct/Indirect
- Industrial
- Lamps and Ballasts
- Landscape Lighting
- LEDs and Drivers
- Lighting Controls
- Lighting Software Programs
- Light Measuring Tools
- OLEDs
- Optics, Films, Lenses, and Reflectors
- Outdoor Lighting
- Research and Lighting Reference Publications
- Specialty Items and Accessories
- Street and Area Roadway Lighting
- Tasklighting
- Theatrical Lighting
- Tracklighting
- Wallwashers

**Deadline: Feb. 15, 2016**

**Please send materials and address all inquiries to:**

**Hallie Busta**  
Associate Editor,  
Products/Technology  
ARCHITECTURAL LIGHTING  
Hanley Wood  
One Thomas Circle NW, Suite 600  
Washington, DC 20005-5811  
Email: [hbusta@hanleywood.com](mailto:hbusta@hanleywood.com)  
Tel: 202.736.3323

## SUBMISSION INSTRUCTIONS

Product submissions must include the following materials:

1. PDF file with Submitter's contact information including: Name; Title; Company Name; Address; Phone Number; and Email address. If you work for a PR firm/agency and are sending materials on behalf of a manufacturer, please indicate the manufacturer that you are representing.
2. Hardcopy printout of product information including product press releases and technical spec sheets that describe the product in detail. (Do not send full catalogs.)
3. If you are submitting in the 'Apps' category, please provide URL link to page in the iTunes® store.
4. Hardcopy color printout of the digital image(s) being included as part of the submission. Images can include the product image and/or the product in an installation/application setting. Include the submitter's name, address, phone number, and email address on all printouts.
5. CD or USB drive with all of the entry materials—product literature (text materials in PDF or Word format) and images in correct file format (see Artwork Submission Requirements below). Please note, if the entry materials are being sent electronically, please coordinate with the editor for file transfer instructions via Dropbox. Hardcopy of all materials must be sent, regardless.

## ARTWORK SUBMISSION REQUIREMENTS

All artwork must be 300 dpi, and at least 4" x 6" or the closest approximation. Appropriate file types are JPEG, TIFF, EPS, or PSD. There should be no text on the images. Please label the digital image files using the following format: Manufacturer\_Product Name.

**SUBMISSIONS CANNOT BE ACCEPTED VIA EMAIL.**

“Design is like a network.  
It connects arts, technique,  
science, and theory.  
Creativity lies within  
all these dimensions.”

## NATHALIE ROZOT



For Nathalie Rozot, intellectual curiosity is a constant. With degrees in science and design, she has forged a multidisciplinary career. The director of New York-based L’Observatoire International from 2000 to 2005, she opened her own lighting design and research practice in 2006. She has taught landscape lighting workshops in France at the École National Supérieure de Paysage de Versailles and is the primary thesis faculty in the MFA lighting program in the School of Constructed Environments at New York’s Parsons the New School for Design where she has taught for the past 15 years and has served as thesis adviser since 2007. In 2011, she founded PhoScope, a “think tank on light” to establish “a new platform to facilitate change in the practice, education, and critical study of lighting.”

**Do you see architecture and lighting as distinct or parts of the same whole of design?**

Architecture and lighting decisions are related because space, materials, and light are connected. However, constructed environments need distinct areas of expertise that are complementary. Design needs to be served with cross-disciplinary knowledge and processes.

**Does there need to be more critical dialogue and discussion in architectural lighting?**

Yes. Our generation is too focused on practice and our intellectual legacy will be dire. We need a body of theoretical work and study to advance practice. I’m a strong advocate for a larger critical and research culture about lighting.

**What do you see as the greatest challenge facing lighting education today?**

We’re in a 21st century context where higher

education, design education, and pedagogy have evolved. Lighting design education should evolve as well. We’re still teaching lighting design in an architecture-centric framework but we need to move beyond self-justification for our field. We should promote a wider literacy about light across all disciplines so that we can focus on the lighting design practices that are relevant today.

**Why did you establish PhoScope?**

The idea was to create a shift and to position critical research culture from a photo-centric viewpoint, as opposed to situating it within architecture and theory.

**How would you describe what a lighting designer does?**

I say that I am phototect and that I phosform public space in the photopolis. •

interview by Elizabeth Donoff  
photo by Karsen Moran

# IT'S TIME FOR TARGETTI

**TARGETTI USA** is proud to bring the quality, craftsmanship and renowned excellence of the **TARGETTI GROUP** offering to the North American market. As one of the most respected and recognized manufacturers of sophisticated architectural lighting solutions, TARGETTI offers a wide range of indoor and outdoor architectural lighting solutions.

## TARGETTIUSA

INNOVATIVE &  
CUSTOM SOLUTIONS

### TARGETTI

KEPLERO RGBW



JEDI - RECESSED



### DURALAMP

CUSTOM PAVER LIGHT



DURASTRIP RGB



PROJECT | The Clock at Irvine Spectrum Center | Lighting Design: First Circle Design Inc.

## TARGETTI

[targetti.us](http://targetti.us)

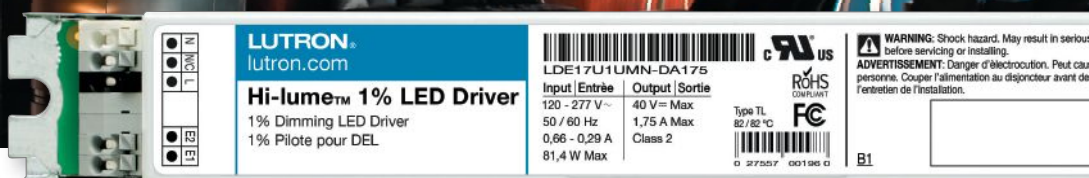
## DURA LAMP

[duralampusa.com](http://duralampusa.com)

Targetti USA 3184-C Airway Avenue Costa Mesa, California 92626 714-513-1991

# Hi-lume™ 1% LED drivers for incandescent-like performance

Hi-lume smooth dimming down to 1%, with Soft-on, Fade-to-Black™ technology

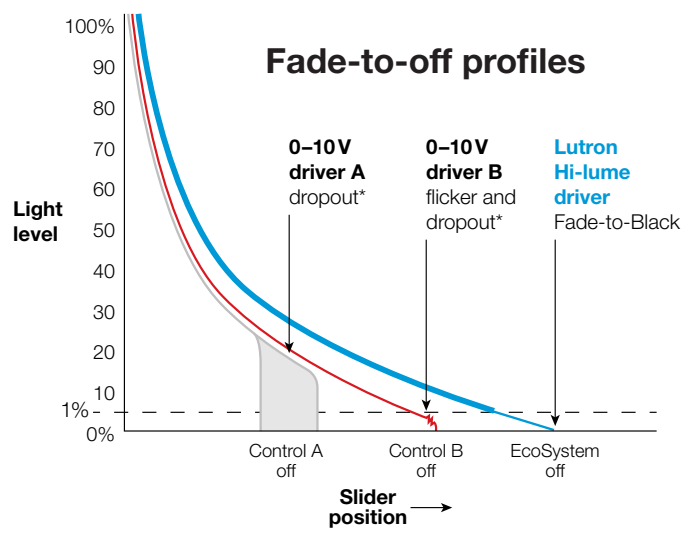


Available for downlights, troffers and linears up to 75W

## Hi-lume LED drivers Delivering a beautiful lighting experience

- No interruptions and no dropout
- Smooth, flicker-free dimming down to 1%
- From 1% to off, lights fade to black
- Compatible with all fixture manufacturers

Contact your Lutron representative to schedule an in-person demo today or visit [www.lutron.com/hilumeLED](http://www.lutron.com/hilumeLED)



\*The lowest light level attained depends on the load tested.