

A R C H I T E C T U R A L  
L I G H T I N G



April 1989

Eight Dollars

# ADVANTAGE

# VENTURE

## THE LOW WATTAGE METAL HALIDE ADVANTAGE

*Quality of light. Quantity of light. Economy of light. All are important in an illumination package. But it's frequently difficult to provide all three without compromise. Enter low wattage metal halide lighting which combines the best in quantity and quality of light with energy economy.*

**V**enture Lighting has dramatically increased the breadth of its low wattage metal halide product family.

Lighting specifiers now have an opportunity to combine high levels of illumination with good color rendition, while reducing total operating costs in exterior and interior lighting applications.

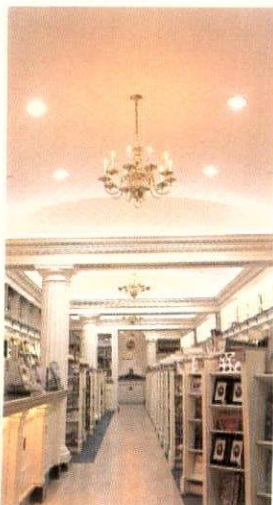
For high quality lighting, add Venture Lighting to your list of low wattage metal halide lamp suppliers.



70 Watt Metal Halide  
Lamp Shown Actual Size



© Mark Segal 1989



© Mark Segal 1989



**VENTURE LIGHTING  
INTERNATIONAL**

625 Golden Oak Parkway  
Cleveland, Ohio 44146  
1-800-338-6161



# DINK

This little fellow is just the right size for the new Par 20 and Par 16 lamps. When fortified with all of our accessories, he becomes one macho guy.

For a 270 series information kit, write on your letterhead to:  
Lighting Services Inc,  
Industrial Park Rt 9W,  
Stony Pt, NY 10980



Circle 3

## ARCHITECTURAL LIGHTING

*Architectural Lighting* is published monthly by Aster Publishing Corporation.

**Editorial Offices:** 859 Willamette Street  
P.O. Box 10460  
Eugene, OR 97440-2460  
(503) 343-1200  
Fax: (503) 344-3514

**Sales Offices:** 195 Main Street  
Metuchen, NJ 08840-2737  
(201) 549-3000  
Telex: 139308, Fax: (201) 549-8927

**Circulation Offices:** P.O. Box 10955  
Eugene, OR 97440-9895  
(503) 343-1200

**Publisher** Edward D. Aster  
**Associate Publisher** Michael Aster

**Editor** Charles Linn, AIA  
**Associate Editor** M. Jane Ganter  
**Senior Assistant Editor** Gareth Fenley  
**Assistant Editor** Susan Degen

**Art Director** Lee Eide  
**Associate Production Director** Stephen Roberts  
**Advertising Coordinator** Helen Hornick

**Director of Advertising** Robert Joudanin  
**National Sales Representative** Arthur S. Rosenberg  
**Classified Directory Sales** Gordon Exc

**SUBSCRIPTIONS:** U.S. and possessions — 1 year (12 issues), \$54; 2 years (24 issues), \$99; 3 years (36 issues), \$142. Foreign countries — 1 year (12 issues), \$97; 2 years (24 issues), \$187; 3 years (36 issues), \$273. Delivery of *Architectural Lighting* outside the U.S. is 3–14 days after printing. Single copy price — U.S., \$8; foreign countries, \$10 plus postage.

**REPRINTS:** Reprints of all articles in this issue and past issues are available (250 minimum). Write or call: Aster Marketing Services, 859 Willamette Street, P.O. Box 10460, Eugene, OR 97440-2460, USA, (503) 343-1200.

**CHANGE OF ADDRESS:** Allow 4 to 6 weeks for change; provide old mailing label and new address, including ZIP or postal code. **POSTMASTER:** Send address changes to *Architectural Lighting*, P.O. Box 10955, Eugene, OR 97440-2955.

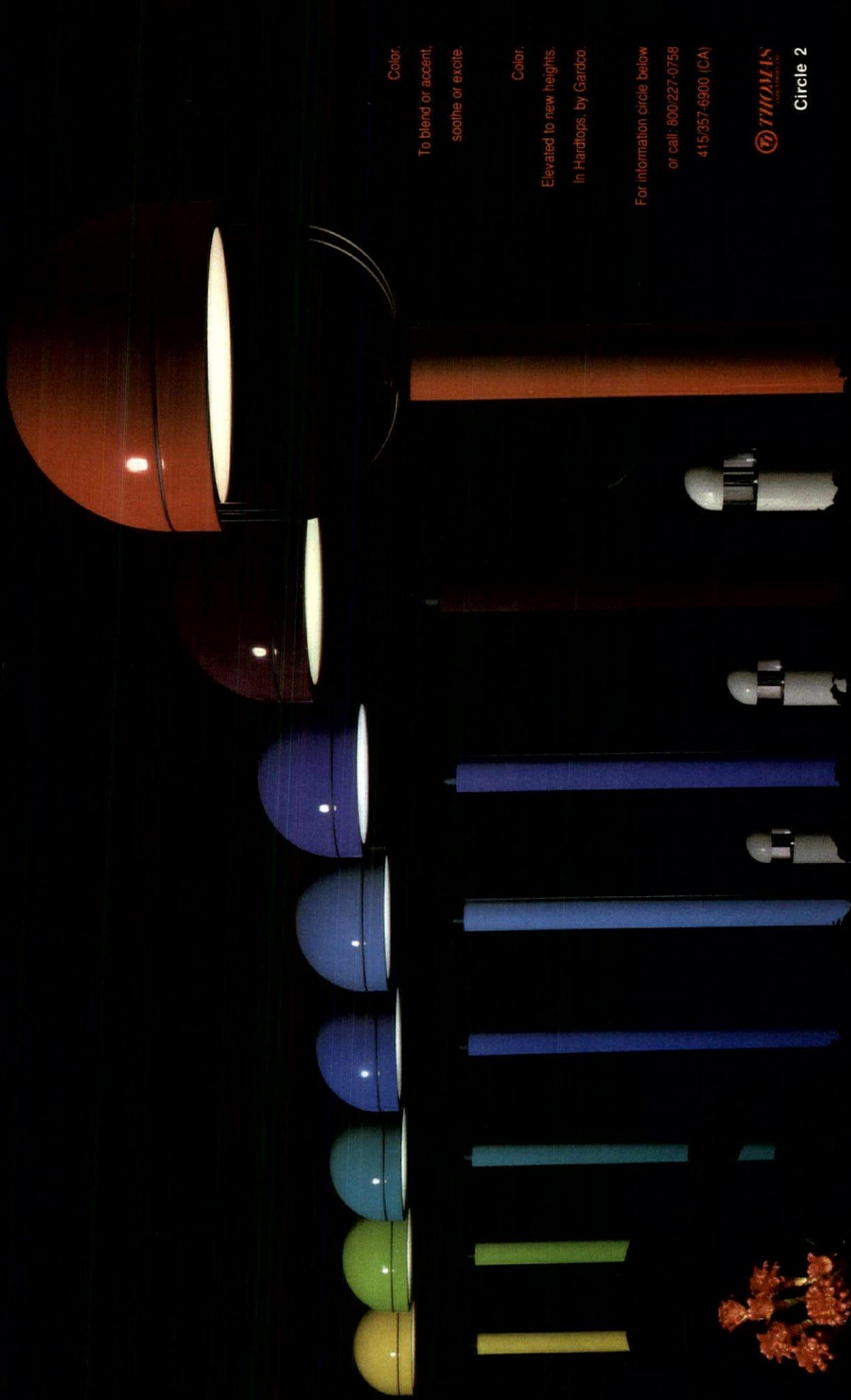
© 1989 Aster Publishing Corporation. All rights reserved. Reproduction in part or whole without written permission is strictly prohibited. *Architectural Lighting* and the logo appearing on the cover of this magazine are registered trademarks of Aster Publishing Corporation.

 BPA (ISSN 0894-0436)

Second class postage paid at Eugene, Oregon, and at additional mailing offices.

**Aster Publishing Corporation:**

**Chief Executive Officer** Edward D. Aster, **Senior Vice President** Michael Aster, **General Manager** Mildred V. Burke, **Editorial Director** David Webster, **Senior Production Editor** Karen Carlson, **Production Director** L. Ghio Imburgio, **Circulation Director** Linda Pierce, **Paid Subscriptions Manager** Lynn Pocan, **Director of Marketing** Archie A. Anderson, **Marketing Services Director** Richard P. Scheckenbach.



Color.  
To blend or accent,  
soothe or excite.

Color.  
Elevated to new heights,  
In Hardtops, by Gardco.

For information circle below  
or call: 800/227-0758  
415/357-6900 (CA)



Circle 2



S E R V I C E

# DECISION MAKING WITHOUT HARD CHOICES

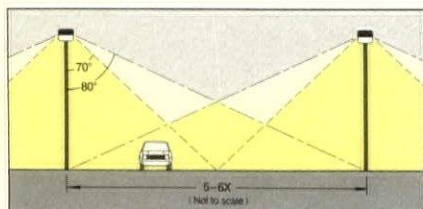
Fixture selection is usually a process of compromise between appearance, performance and design. The result is having to settle for less than you want. ***It is time to get what you want, not just what you can get.***

## APPEARANCE WITH APPEAL

The rugged, nonmetallic optical housing and post top construction give Supra-Lyte its attractive, support free appearance that is unobtrusive during the day and a glowing invitation at night.

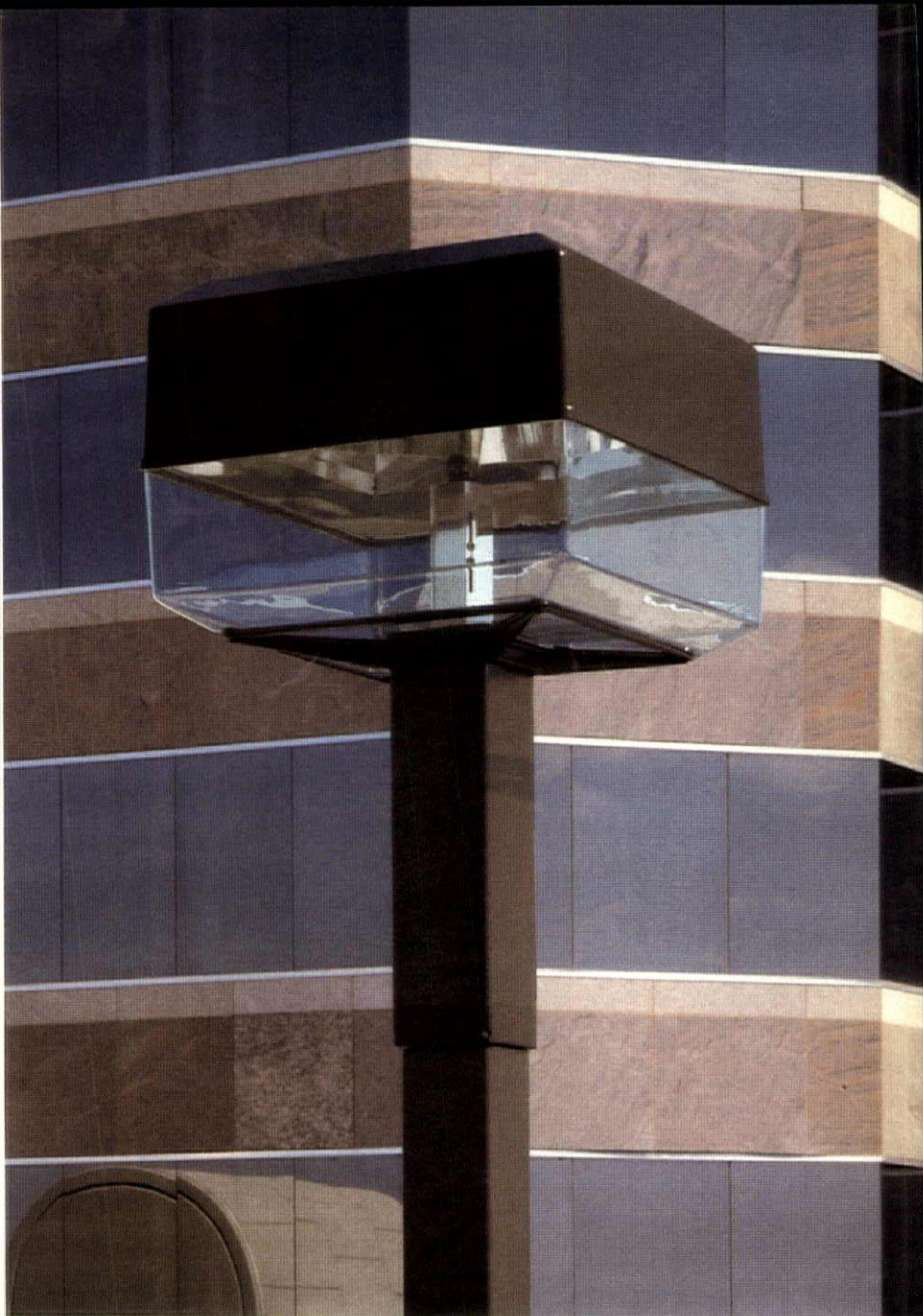
## THE PERFORMANCE PROMISE

An oversized reflector and vertical lamp gives Supra-Lyte exceptional performance, even when spaced six mounting heights apart. Type V square distribution and a high peak beam angle result in extremely efficient layouts that eliminate wasteful circular overlap. And the superb cutoff characteristics always provide comfortable, glare free illumination.



## CREATIVE FLEXIBILITY

Supra-Lyte's dual lamp option can be used to mix high pressure sodium and metal halide to give the warmth and appeal of incandescent color . . . without sacrificing HID efficiency and long life. An internal reflector can also be used to



provide Type IV medium distribution for exceptional performance along perimeters and walls.

## SAVINGS THROUGH CONTROL

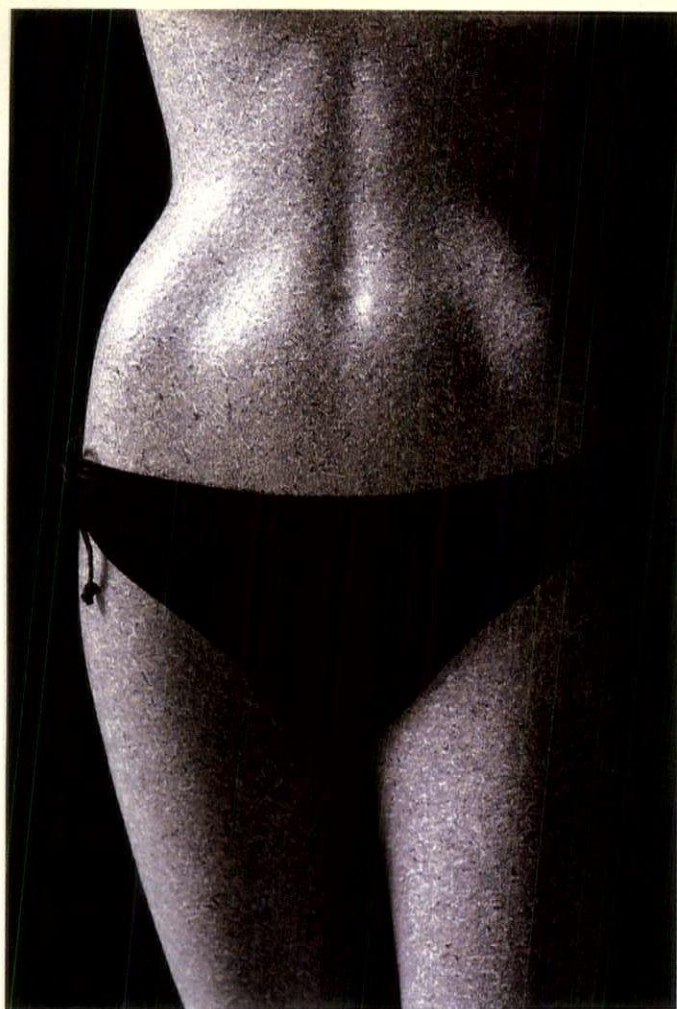
The dual lamp option allows one lamp operation during off-peak periods for reduction of unnecessary light levels and substantial energy savings. Significant savings can also be obtained with single lamp luminaires by switching

from high to low levels using Wide-Lite's exclusive Bi-Level system. Either way, operating costs can be effectively controlled without compromise to design criteria, system integrity or component life.

***With Supra-Lyte, the design decision is yours, but the performance burden is ours.*** Expect the quality and performance that can only come from Wide-Lite, the leader in HID innovation.

# WideLite®

A GENLYTE COMPANY  
The Leader in Lighting



## Only her contractor knows for sure.

*There is a growing body of evidence that architectural coatings look great on just about anything.*

*Lighter weight, less costly to install – now Valmont can make your poles, pipe or tubing look like granite, marble, sandstone – you name it.*

*For concrete proof, see us at the Lighting World Show in May – or simply circle the reader service number below.*



**Valmont Architectural Coatings: 402-359-2201**



Valmont Industries, Inc. Valley, NE 68064

## Editorial Advisory Board

### **Charles C. Benton**

Associate Professor of Architecture  
University of California at Berkeley  
Faculty Research Associate  
Lawrence Berkeley Laboratory  
Berkeley, California

### **Alfred E. Borden IV, IALD**

Senior Lighting Designer  
The Kling-Lindquist Partnership, Inc.  
Philadelphia, Pennsylvania

### **John R. Brass, IALD, IES**

President  
Lighting Research & Development, Inc.  
Novato, California

### **Carol Chaffee, IALD, IES**

Vice President  
Lightsource  
Venice, California

### **David L. DiLaura, FIES**

Director of Engineering  
Lighting Technologies, Inc.  
Associate Professor of Civil, Environmental,  
and Architectural Engineering  
University of Colorado  
Boulder, Colorado

### **M. David Egan, PE, FASA**

Associate Professor of Architecture  
Clemson University  
Clemson, South Carolina

### **Raymond Grenald, FAIA**

Senior Partner  
Grenald Associates, Ltd.  
Los Angeles, California

### **David Lord, PhD, MIES**

Professor of Architecture  
California Polytechnic State University  
San Luis Obispo, California

### **Mojtaba Navvab, MIES**

Assistant Professor of Architecture  
College of Architecture and Urban Planning  
University of Michigan  
Ann Arbor, Michigan

### **Fran Kellogg Smith, ASID, CSI**

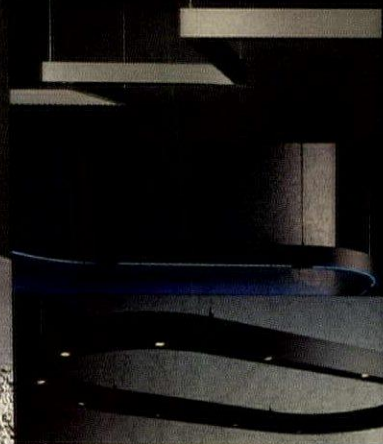
Founder  
Luminae Lighting Consultants Inc.  
San Francisco, California

*Architectural Lighting's* Editorial Advisory Board represents various facets of the lighting professions, and members were chosen for their expertise. EAB members may suggest article subjects, review manuscripts or projects, and answer questions as they arise.

**PROJECTS AND MANUSCRIPTS:** All submissions are handled with reasonable care, but the publishers assume no responsibility for the safety of artwork, photographs, or manuscripts. Every precaution is taken to ensure accuracy, but the publishers cannot accept responsibility for the accuracy of information supplied or for any opinion expressed herein.

# ADA Decorative Sparkle, Quietly Elegant.

The visual impact of sparkle from low voltage miniature lamps. To create spectacular effects. Or indicate direction. Add energy efficient indirect fluorescent lighting which can be wired and switched separately, offering freedom of choice for a wide variety of applications. Modular and available in straight runs, arcs and intercepts, Decorative Sparkle is only one of the many elegant systems in the innovative Ambient Decorative Accent System (ADA). Sparkle combined with indirect lighting. The total effect is quiet elegance.

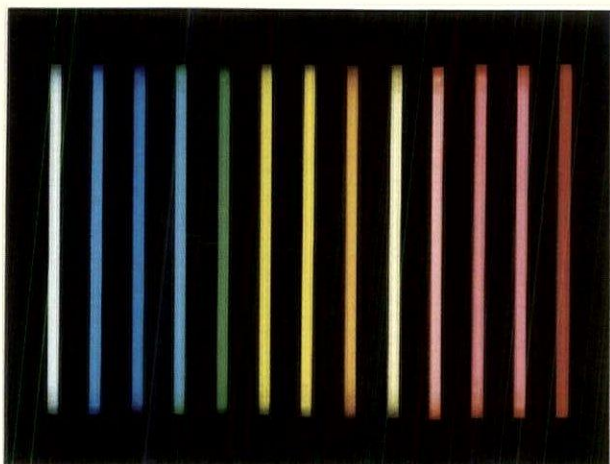


**A** **D** **A**  
AMBIENT DECORATIVE ACCENT

**LIGHTOLIER®**

A **GENLYTE** COMPANY  
The Leader in Lighting

## Introducing Lucifer's color and curve fluorescents.



**FLUREON™**

New curves, new colors, new lengths. Flureon. The look of neon, the advantages of fluorescent. Now you can achieve greater flexibility, versatility and a new artistic elegance. With 9 colors and 9 shades of white. High lumen output, narrow profile sizing. Ideal for cove lighting, narrow spacing and display lighting. Lamp length to 96".

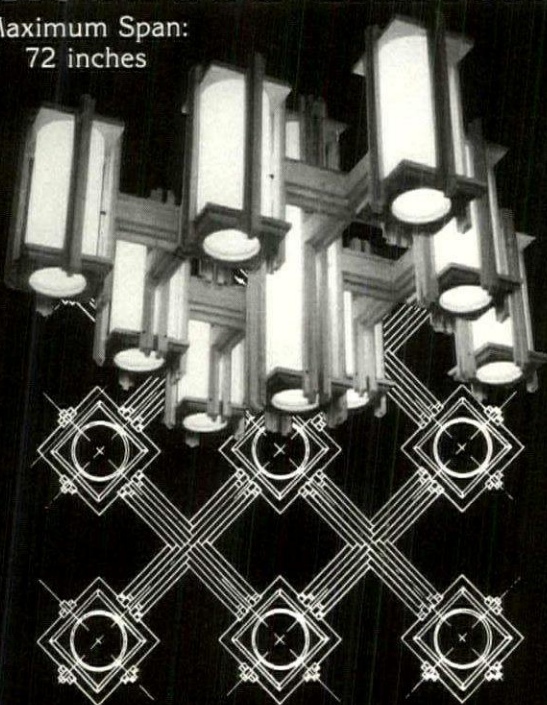
**LUCIFER**  
LIGHTING COMPANY

P.O. Box 370375, Miami, Florida 33137. (305) 531-7978. FAX (305) 532-6800.

Circle 7

## Redwood Classics

Maximum Span:  
72 inches



**SYLVAN DESIGNS, Inc.**

8921 Quartz Ave., Northridge, CA 91324  
(818) 998-6868

Circle 8

## From the Editor

Last June, President Reagan signed the *National Appliance Energy Conservation Amendments of 1988* into law. Among other things, that law establishes fluorescent lamp ballast efficacy factors (BEFs). Ballasts for three popular lamps will be affected: 40-watt rapid starts, 8-foot slimlines, and 8-foot high-output rapid starts. The law, drafted by the Certified Ballast Manufacturers (CBM), the National Electrical Manufacturers Association (NEMA), and several energy conservation and environmental protection groups will supersede a bunch of confusing and sometimes conflicting laws adopted by various state governments over the past several years.

This means that beginning January 1, 1990, ballasts manufactured for the U.S. market must meet strict energy efficiency criteria. Ballasts that do not meet the criteria cannot be sold for nonresidential applications in the U.S. after April 1, 1990. Luminaire manufacturers have one year after that date to use up their stocks of noncomplying ballasts. After April 1, 1991, not only must all ballasts incorporated into their products conform to BEFs established by the law, but the luminaire packaging must be marked to show they conform. Ballasts and packaging that conform will be marked with a capital E inside a circle.

**E** It's hard to say how much energy the ballasts can save because the amount of electricity consumed by a ballast depends upon luminaire design and the environment in which the luminaire is operated. End-user cost is also difficult to calculate, given the economies of purchasing ballasts in quantity (ask anyone who ever spent \$14 to replace a ballast in an \$8 fluorescent shop light). Still, the amount of energy saved by the new ballasts will pay back the additional outlay many times over the life of the fixture; and these ballasts will last years longer. Besides, in the long run, the price of the "circle E" ballasts will drop dramatically once the industry gets into full-scale production.

It is not unusual for an industry to resist changing the status quo. The automobile industry, for example, has bucked mandatory fuel economy, safety, and emissions standards for years. Our industry can be proud of the fact that two of its organizations, the CBM and NEMA, helped to draft this important new legislation.

Charles Linn, AIA



# Scalini A Miracle of Glass and Light



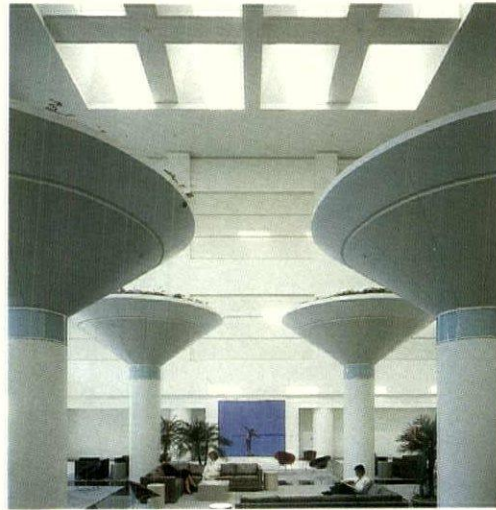
Inspired by the magnificent architecture of Rome, Scalini creates equally striking shapes with pyramiding steps of clear glass stacked one upon the other. The edges of the steps are polished smooth, but the sides are untouched so that thousands of facets remain to disperse the light and simulate sparkling sheets of ice. The effect is absolutely stunning. Ask for THE INTERNATIONAL COLLECTION, our new brochure brimming with other unique designs that celebrate glass and light.



---

**LIGHTOLIER®**

A **GENLYTE** COMPANY  
The Leader in Lighting



---

## Cover Story

- 22 Huge building prototype for large-scale daylighting design *D. Mabone*
- 

## Articles

- 29 1989 Lighting World International features seminars, exhibits  
32 Seattle market shows super market lighting to shoppers *B.-J. Novitski*  
36 Distinctive library luminaires reiterate circular design motifs *S. Degen*
- 

## Statements

- 16 Projected graphics make cafeteria entry a kinetic experience *G. Fenley*  
18 Hidden incandescents simulate sunlight in windowless museum *M. Heffley*
- 

## Columns

- 38 Software Reviews: CD-ROM: Off the sidelines and into designers' hands *D. Lord*  
42 Lighting Graphics: More about under-cabinet task lighting *S. Mills*
- 

## Departments

- 8 From the Editor  
12 Letters  
13 Lighting Clinic  
44 Product Showcase  
58 Product Literature  
60 Classified Directory  
61 Calendar  
62 Manufacturers  
62 Photographers  
62 Advertisers





*Nightscaping*<sup>®</sup> Takes Over  
Where Nature Leaves Off

Let Nightscaping Light The Way

DESIGN HELP LINE: 800-LIGHT40

First and Finest in 12-Volt Outdoor Lighting

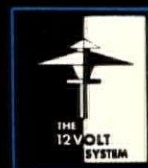
*Nightscaping*

LORAN INCORPORATED

1705 East Colton Avenue • Redlands, California 92373 • (714) 794-2121



We're Also  
Proud Of  
Our Spanish  
Acabiano



SINCE 1959

# VANDAL/SPHERE LIGHTING



Cat. No.  
NO. AD107

## SPHERE WITH CAST GUARD

Designed to withstand the punishment in high vandalism and play areas. A durable cast aluminum guard with an 18" Lexan sphere defies breakage. A perfect luminaire for replacement of existing fixtures with an adaptor to fit existing poles.



Existing Poles



## ARCHITECTURAL AREA LIGHTING

14249 Artesia Blvd. • P.O. Box 1869  
La Mirada, California 90637-1869  
(714) 994-2700 • FAX 714-994-0522

Circle 11



## Letters

### A sconce by any other name — please

I generally enjoy your magazine; however, one thing about it annoys me. There seems to be a tendency in your magazine to ascribe the term "wall sconce" to every other wall-mounted light fixture mentioned. My dictionary describes sconce as "a bracket candlestick or group of candlesticks secured to a wall." Logically, then, an electric light fixture, to rate the term *sconce*, should look like a candlestick. To preface the word *sconce* with *wall* is obviously redundant. Further, most of the light fixtures that cavalierly embrace the term *wall sconce* are actually *bracket* fixtures, or *wall brackets*, if you must be redundant. That is the traditional term for them. It appears in the literature of organizations of national scope, such as the IES.

Please do what you can to encourage proper English and proper terminology.

Charles Ryan, Electrical Engineer  
St. Albans, Vermont

### An interesting quest

This letter sent me to the two latest IES Lighting Handbooks and our unabridged Webster's Third New International Dictionary. An interesting quest. Much to my surprise neither "sconce" nor "bracket" appears in the index or the glossary of either IES book. In Webster, in addition to several definitions involving candles, a sconce is defined as "a protecting screen or cover"; one definition of a bracket is "a fixture projecting from a wall or column (as for holding a lamp)." From a purely literary point of view, perhaps neither word alone is an accurate descriptor of those wall-mounted luminaires consisting of a screened fixture that provides uplight, downlight, or a combination of up- and downlight. Still, so many designers and manufacturers are comfortably at home with their use of the word "sconce" that we will no doubt continue to use it in the magazine. We do try to excise all redundancies, but we've yet to reach perfection.

Jane Ganter, Associate Editor

### Sexism in article title

I was dismayed to see the following head ["Today's fixtures: Good-looking and can cook too"] in your December issue. It does seem as though the more we work toward a nonsexist society, the more sexism pops up in strange places. Women for so long were judged on looks plus homemakership that I guess I shouldn't be surprised, but this certainly spoiled my day and made me wonder why on earth I enjoy receiving your magazine. Try better in the future?

M. Susan Ubbelohde, Associate Professor  
School of Architecture and Landscape Architecture  
University of Minnesota, Minneapolis

### She's right

Professor Ubbelohde is right. We should have changed the author's title, which was insensitive. Monitoring English usage is part of my responsibility, and I goofed. Architectural Lighting has a real commitment to inclusive language.

Jane Ganter, Associate Editor

The editors welcome your letters, which help to keep us responsive to our readers' needs and interests. Please address your letters to Charles Linn, AIA, Editor, Architectural Lighting, 859 Willamette Street, P.O. Box 10460, Eugene, OR 97440. All letters are subject to editing.

## ■ Lighting Clinic

### Light as a destructive force

*Recent articles in your magazine have addressed the issue of protecting artworks from light, particularly ultraviolet light. Just what does light do to art besides let us see it?*

*N. Erickson*

Exhibiting art under the wrong conditions can lead to its slow destruction. Visible and near-visible radiation attack certain materials and begin a process of chemical deterioration called *photodegradation*. But, because light is necessary for viewing, curators can only mitigate, not eliminate, radiation effects by controlling sources.

Art objects have different levels of sensitivity to light. Metal, glass, ceramic, and stone can safely stand in full sunlight. But organic materials — textiles, paper, and wood, for example — become faded or discolored with exposure to light. Ironically, protective coatings applied over paint may darken when exposed, obscuring the image beneath. Coloring agents may be more or less colorfast: many pigments, dyes, and inks are aptly called *fugitive*. Watercolors are notoriously susceptible to fading. Oil paintings are less fragile, although curators disagree about how much light they can tolerate.

The temperature and humidity in a gallery affect the rate of photodegradation. Heat speeds up chemical reactions, so high-wattage incandescent sources can be dangerous near art. Fortunately for lighting designers, the root cause of the photodegradation problem — light itself — can be controlled in several ways. Three factors determine the amount of damage light will cause: intensity, exposure time, and spectral distribution. A simple, direct relationship exists between the first two. The damage potential in footcandle-hours (or the corresponding metric unit, lux-hours) equals intensity multiplied by exposure. In principle, exposure to 1000 footcandles for one hour will do as much damage as exposure to 1 footcandle for 1000 hours. Many art objects are exhibited on condition that they receive only certain "doses" of light. Maximum footcandle levels are a shorthand way of taking into consideration the expected exposure times.

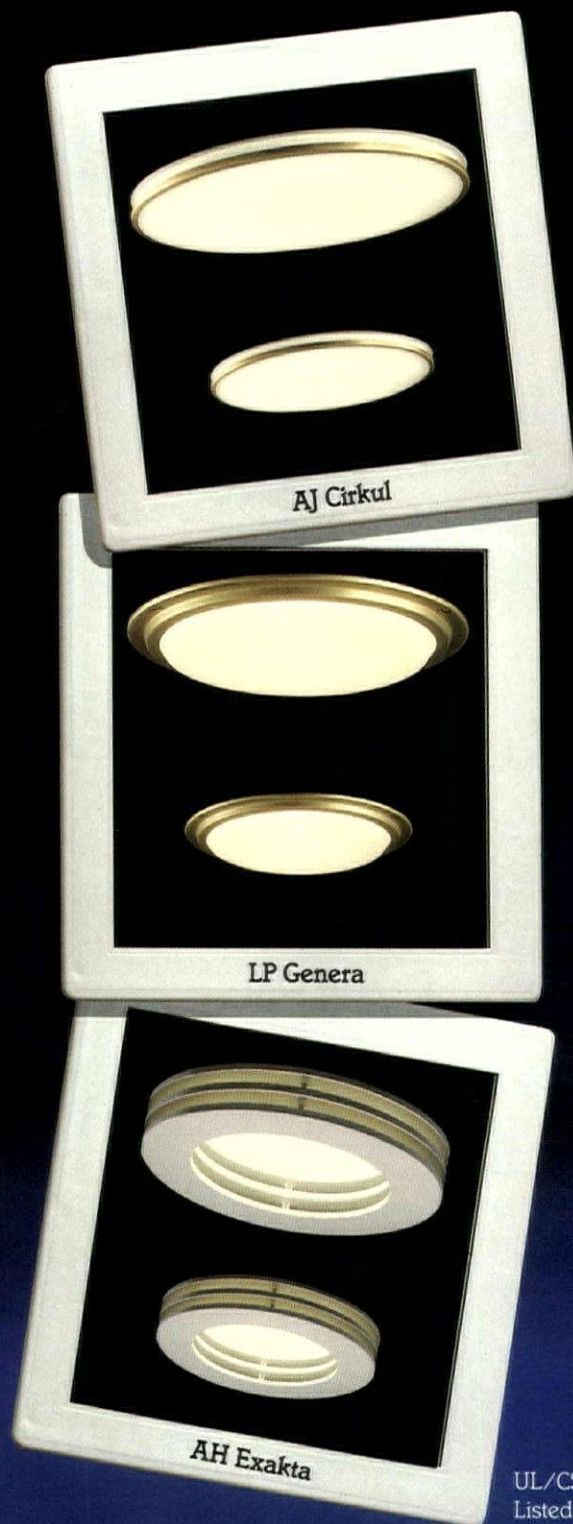
The role of spectral distribution is somewhat more complex. In general, the shorter the wavelength, the greater the damage potential. Blue light is more potent than red light. Ultraviolet light, the most potent of all, is invisible and contributes nothing to the viewing experience. Therefore, it should always be filtered out when photodegradation is a concern.

*Gareth Fenley, Senior Assistant Editor*

*Send your lighting design questions to Architectural Lighting. When we can track down a lighting designer who will share expertise about the problem, we'll publish it in the Lighting Clinic. Address your letters to Lighting Clinic Editor, Architectural Lighting, 859 Willamette Street, P.O. Box 10460, Eugene, OR 97440.*

### A case of mistaken identity

We apologize for an editing error in the March issue that caused some embarrassment for our landscape lighting columnist, Janet Lennox Moyer, ASID. She was erroneously identified as a landscape architect. In fact, Jan Moyer specializes in designing garden lighting.



UL/CSA  
Listed

**louis  
poulsen**

Poulsen Lighting, Inc.  
5407 N.W. 163 Street  
Miami, Florida 33014-6130  
Telephone - 305-625-1009  
Telefax - 305-625-1213



# PRESENTING THE BEST THING TO HAPPEN TO CEILINGS IN 479 YEARS.

**Philips introduces Advantage X.  
A renaissance in fluorescent  
lighting.**

"The science of design," according to Michelangelo, "is the source and very essence of all the works of the human brain and hand."

By creating the Advantage X fluorescent lamp, the people at Philips Lighting have raised the concept of design to new heights.

Advantage X not only provides greater flexibility in lighting layout, it enables you to render each new design in a richer light.

With 17% more light output than standard fluorescents of the same wattage and a remarkably high color rendering index of 80, Advantage X opens up a whole new age of lighting design opportunities.

And to help keep your client's operating costs from going through the roof, it lasts a full 20% longer than standard lamps.

For more information about the new Advantage X, call Philips at 1-800-631-1259, ext. 932, and see how we've taken fluorescent lighting out of the dark ages.

*The new Philips Advantage X fluorescent lamp.*



**IT'S TIME TO CHANGE YOUR BULB.™**  
**PHILIPS**



© 1988 Philips Lighting Co. A Division of North American Philips Corp.

Circle 13

## Projected graphics make cafeteria entry a kinetic experience

The Energizer is not just any corporate cafeteria. At least, that's the message of a splashy graphic display created with projected light at the cafeteria entrance. A companywide competition generated the unusual name for the employee eatery at Enron Corp, a Fortune 500 corporation. Designers at Gensler and Associates took the concept and created a memorable identity for the space.

Lead designer Charles Kifer drew on the talents of Gensler's graphics department to create the Energizer logo. Lighting consultant Steven Bliss of Theo Kondos Associates provided design and technical assistance with the theatrical framing projectors selected for the job.

"Our graphics department worked with the ideas of electrical impulses and vitality that are suggested by the name Energizer," Kifer explains. "We decided to write the word on the wall with small, conventional block letters, then write it in bigger, abstracted form with projected light." The projected images are the product of high-intensity theater lights with interchangeable cutout templates, called *gobos*. By switching gobos, Enron can change colors and shapes, so the versatile display can bring seasonal messages to employees.

In the food service area, the design team kept overall light levels low. Downlights focus on diamond-shaped black granite rosettes in the flooring, guiding employees into the cafeteria and toward the serving areas. Perforated wood panels partially block south-facing windows along the back wall, obscuring an unattractive view

of another building's back side. Semicircular red hoops, highlighted with exposed white neon, set apart the major areas of the scatter-system servery.

In the dining area, with its typical 9-foot ceiling, lighting helps to give an illusion of greater height. Simple millwork coves, painted light blue and lit by concealed fluorescent strips, provide visual and textural interest.

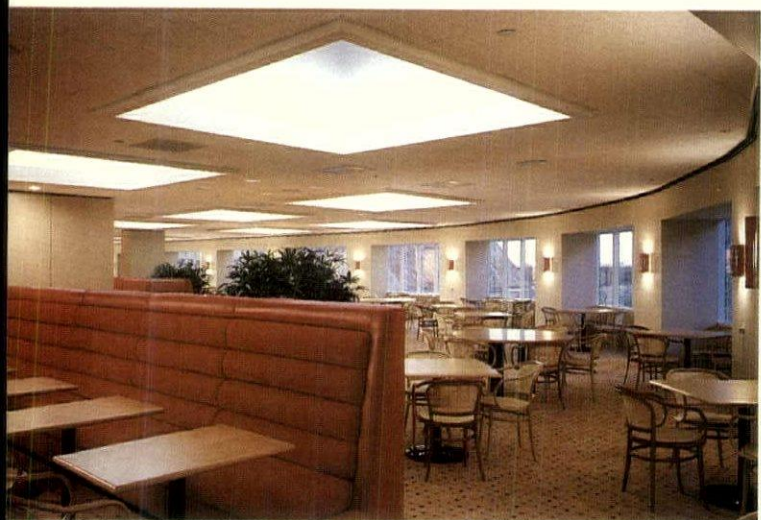
"We wanted the dining area to read as a kind of outdoor space," says Kifer. "Originally, the coves were to have trellises, but that got too cluttered. Ultimately, we chose to use a light blue painted surface." A wall of north-facing windows reveals an inviting view of a landscaped park.

Columns along the window wall are each lit with simple but attractive red sconces. "That fits in with the overall color concept: splashes of primary color in the right places," Kifer explains. Red aniline-dyed wood chairs, for example, are scattered throughout the dining area.

On the way out, refueled employees again pass the framing projectors and the entry graphic. "When we installed the equipment, we worried that people walking through that area would get light in their eyes," says Kifer. "But that's not a problem. In fact, we've observed that people enjoy casting a shadow as they walk by. They become a part of the message; it creates a kinetic feeling. We consider it a very effective use of lighting."

—Gareth Fenley

For product information, turn to page 62 and see Manufacturers.



**Project:** The Energizer  
**Client:** Enron Corp  
**Location:** Houston, Texas  
**Architect and Interior Designer:** Gensler and Associates/Architects

**Lighting Designer:** Steven Bliss, Theo Kondos Associates, Inc.  
**Electrical Engineer:** I.A. Naman + Associates, Inc.  
**Photos:** Nick Merrick, Hedrich-Blessing





**If you're still buying outdoor lighting through a middleman**

# CUT IT OUT

Buy direct from Ruud and save up to 50% on outdoor fixtures including our parking/roadway fixtures, whose high performance optics and quality design make it ideal for a wide variety of lighting applications.

Send for a free catalog or call our toll-free number. A friendly, experienced, customer service representative will help you with all of your needs for outdoor, industrial, track or recessed lighting.

**800-558-7883** Wisconsin 800-236-7500



**RUUD LIGHTING**

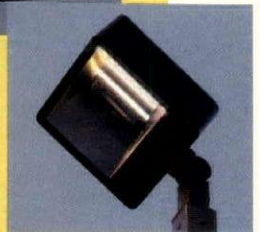
Circle 14

Name \_\_\_\_\_

Address \_\_\_\_\_

City \_\_\_\_\_ State \_\_\_\_\_ Zip \_\_\_\_\_

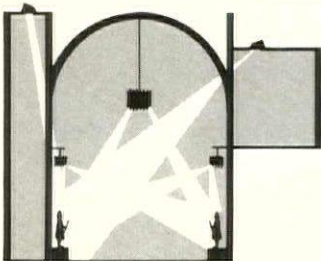
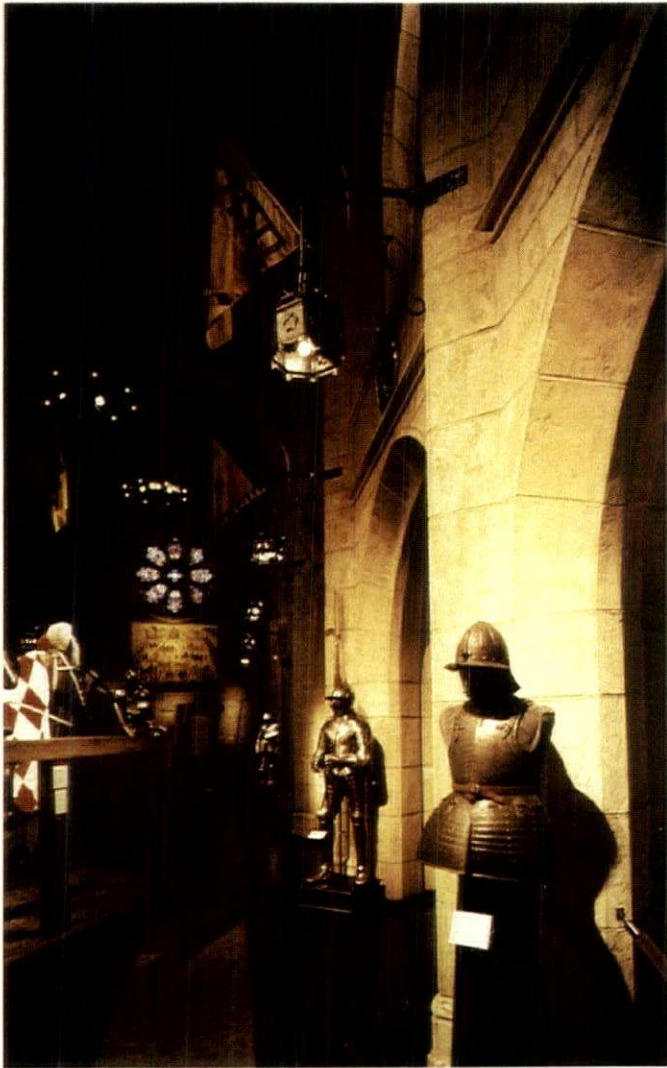
Business \_\_\_\_\_ Phone \_\_\_\_\_



## **RUUD LIGHTING**

9201 Washington Ave.  
Racine, WI 53406  
Fax: 414-886-1721

## Hidden incandescents simulate sunlight in windowless museum



**Project:** The Great Hall of the Higgins Armory Museum  
**Location:** Worcester, Massachusetts  
**Lighting Designer:** Alan P. Symonds, Ripman Lighting Consultants  
**Architect:** Moore-Heder Architects; Allen Moore, principal in charge  
**Electrical Contractor:** Dave Rennie Electric Inc.

Lighting designer Alan Symonds called on his 20-year background in the theater to light the Higgins Armory Museum, which houses a private collection of historical armor, weaponry, and memorabilia. He chose a lighting strategy similar to one he has used for Shakespeare's plays: hidden incandescent sources to simulate sunlight streaming through the south window of a Gothic building.

"Before we called in Alan," says museum director John Stevens, "the room was just daylight, not museum-quality lighting. The objects lacked focus and had a bleached-out look in the summer. His work has really made the most of all the collection's surfaces and colors." The curators boarded up the windows to block the unenchanted view of the surrounding industrial section of Worcester. This, of course, also blocked the daylight. The curators also insisted on incandescent sources to protect the collection from photodegradation.

"The overall design concept I had," Symonds says, "was an image of a Gothic cathedral with light streaming down through the windows." Theater-style lighting ports are cut into the ceilings of side vaults. From those ports, PAR 64s simulate midafternoon sunlight.

The lamps that provide ambient light also cast shadows on the north wall of the building. Fill light was also needed, Symonds notes, "because otherwise many objects would be in shadow. So other light sources are used to replicate inside north light. I tried to keep the accent lighting as much as possible all derived from the con-

cept of sunlighting, modified to fit the actual practice."

MR16s are in converted sconces dating from the original construction. To accent objects lost in the strong shadows, Symonds used narrow beam spots. The lamps are angled toward the objects they light and away from visitors to prevent annoying glare.

Custom chandeliers, 35 feet off the ground, serve as platforms for fixtures with dim exposed lamps. Symonds treated these lamps with magenta and amber lamp dip, a shellac that withstands their heat and causes the filaments to resemble, from a distance, a flame source. "I deliberately did an uneven coating, by hand," Symonds says, "so that with normal head movement you see the filaments through slightly different colors." The lamps are operated at reduced voltage, and Symonds made plenty of spares.

A computer control system is preset for various occasions, including special functions, cleanups, group tours, general display, and a 10-minute sound and light show produced by Eric Cornwell, a theater colleague of Symonds. "To keep lamp life and energy conservation under control, and to protect the art from too much exposure, we never run the lamps at full capacity. The computer permits exact adjustment and balancing of lighting levels," Symonds says.

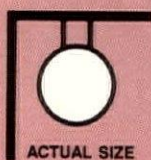
—Mike Heffley

*For product information, turn to page 62 and see Manufacturers.*

# Seldom seen, Always noticed.



Straight or curved, Norbert Belfer miniature light strips can be specified with seven different wattages to fit your low voltage lighting requirements. Constructed of aluminum and available in continuous lengths up to sixteen feet. Ideal for indoor or outdoor applications. Write or call for the name of your nearest sales representative. **Available in Halogen.**

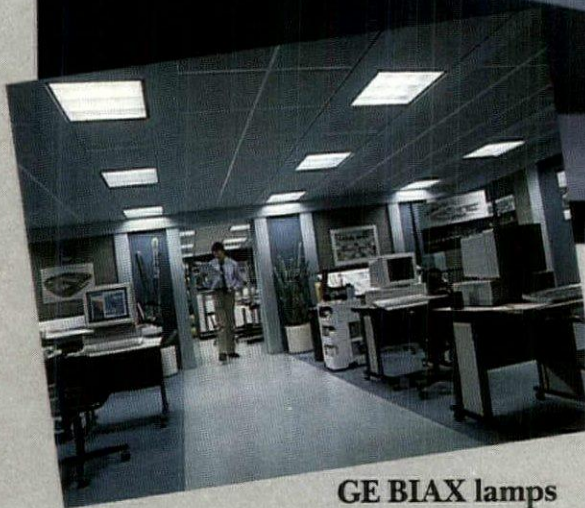


**norbert belfer lighting**  
Since 1968

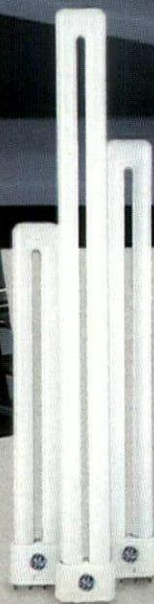
1703 Valley Road, Ocean, NJ 07712 • FAX (201) 493-2941 • (201) 493-2666

Circle 15

# GE IS THE LIGHT THAT WILL RESHAPE THE WAY



**GE BIAX lamps  
make everybody and everything,  
including operating costs, look better.**

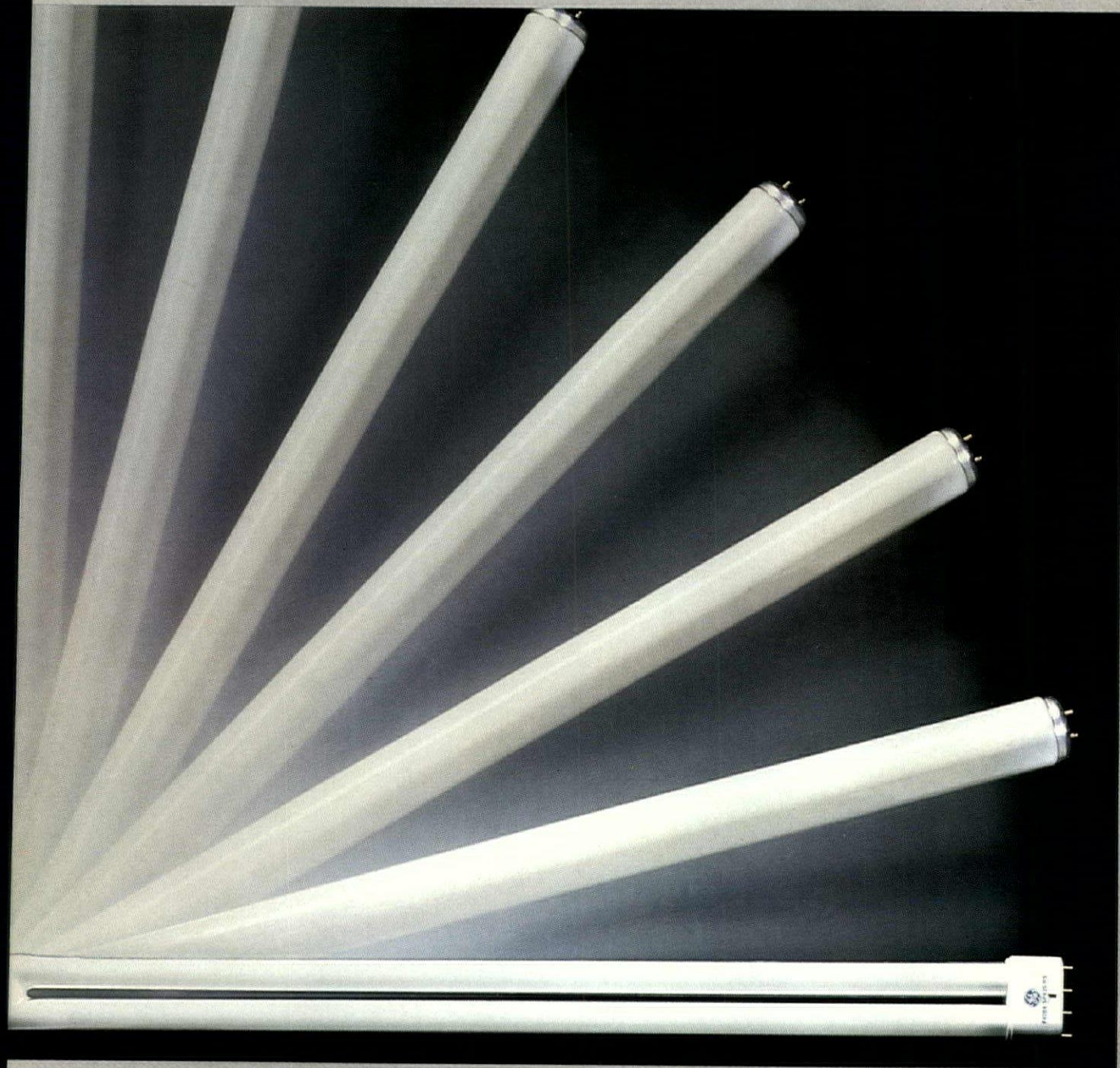


It won't take you long to discover that with GE BIAX™ 40-watt lamps, the design possibilities are endless.

Because they're only 22.5 inches long, yet deliver all the light of standard four-foot fluorescents, you can design with smaller fixtures. And that means more attractive ceilings.

And because BIAX lamps make colors look richer and more vibrant than standard fluores-

# YOU DESIGN LIGHTING.



cents can, the lighting you design will make the environment and the people who work in it more attractive.

Equally attractive is the amount your clients will save on operating costs. GE BIAX 40-watt lamps, you see, last up to 8,000 hours longer than conventional U-shaped tubes. And 13 times longer than incandescents.

Feast your imagination on the endless pos-

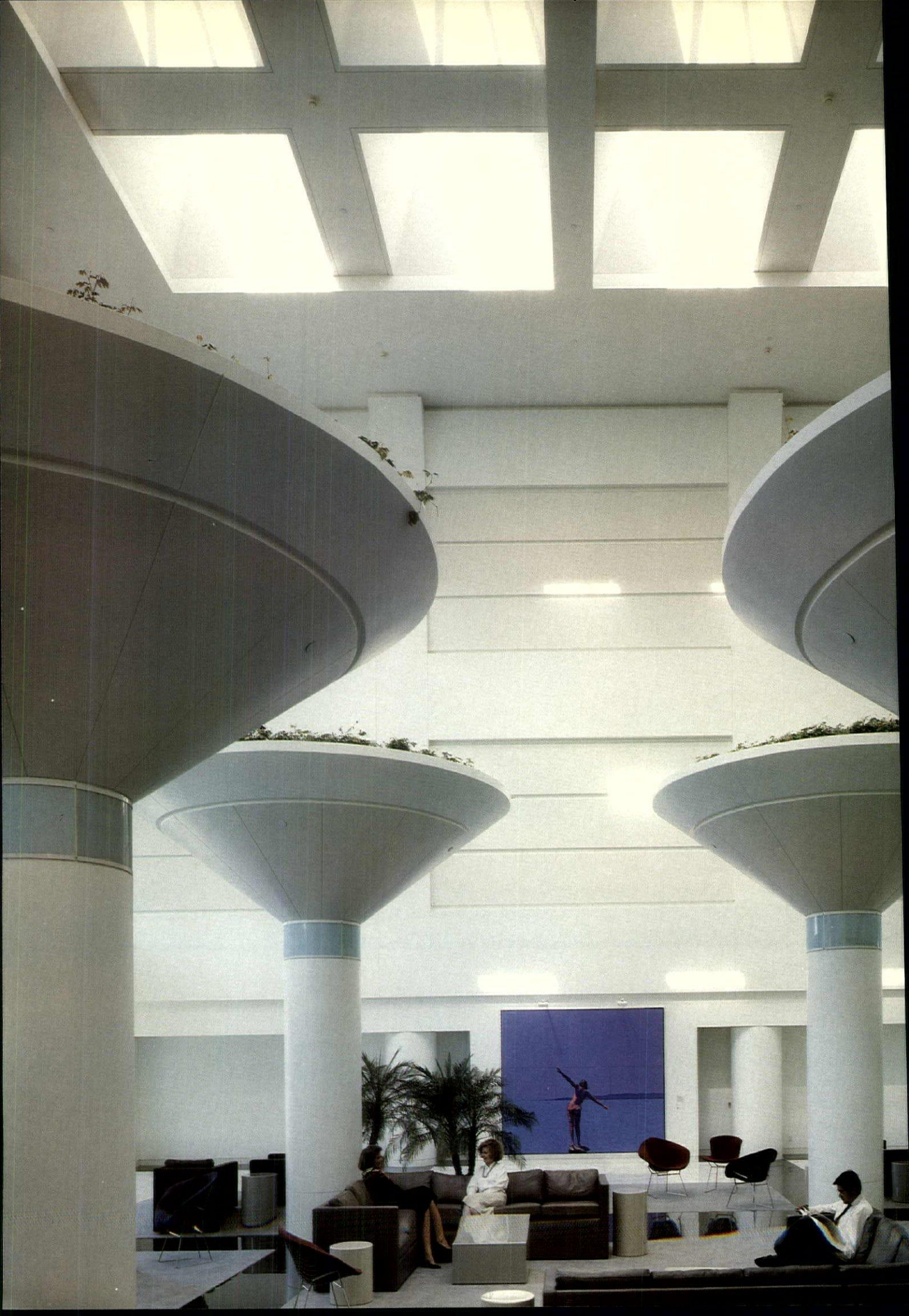
sibilities of the GE BIAX family of lamps.

For more product or application information, call your local GE Specification Area Manager. Or call the GE Lighting Information Center at 1-800-523-5520.



**GE is Light.**

**GE Lighting**





maximum view and openness without sacrificing the sun control. The blinds were chosen over fabric drapes for several reasons. Traditional drapes occupy 20 percent of the facade even when they are fully drawn back, effectively defeating the continuous views. Furthermore, they tend to be extremely opaque, which blocks daylight, or to be too open, which admits millions of pinpoints of sunlight. Although the miniblind slats are opaque and almost completely block direct sun penetration, they reflect and diffuse the direct sunlight up to the ceiling surface, and so contribute substantially to daylighting even while they protect the building from direct sun glare.

To minimize the hours when the blinds block the views, they are motorized and computer controlled. This also avoids the problems of individually controlled blinds in a large, open-plan office. It's an awesome experience to watch 360 feet of miniblinds descend together in perfect synchronization.

The resulting design is highly integrated. Says MacMillan, "Most people have no idea that it's doing what it does. It's a rather complicated aesthetic benefit, but it's definitely there. Everybody understood that when they started seeing the kind of windows that we were

able to provide. If you use a lot of glass and don't use it for daylighting, you just create a problem from an energy point of view. Here was a way to turn what could have been a disadvantage into an advantage."

#### Lighting Design

The lighting system was influenced both by the daylighting systems and by the office partitioning. The modular partitions are up to 5 feet high and are closely spaced. In order to minimize shadowing, the ceiling lights are also closely spaced, each covering only 52 square feet. This led to two-lamp luminaires, in order to avoid excessive concentrations of brightness and shadow. The system was designed for a maintained ambient light level of 50 footcandles, in line with IES recommendations for general office tasks. The resulting lighting power density averages 1.2 watts per square foot, a remarkably low number even in today's era of energy codes.

The selected luminaires are 1 foot by 4 feet, recessed into the ceiling system. The two lamps are mounted one above the other. The fixtures have polished aluminum reflectors and low-brightness, deep-cell parabolic louvers. The result is a low-glare, high cutoff angle luminaire with a 60 percent overall efficiency. The lamps are energy-

saving, 34-watt lamps, tandem wired between fixtures. Both supply and return air are handled through the fixtures, eliminating air grilles.

The other reason for the over-under lamp configuration was the daylighting control system. The controls first reduce electric lighting by turning off the upper lamp. Even though light output from the luminaire is reduced by 50 percent, the luminaire still appears bright. "One of the things about larger fixtures is that one of the cells goes blank when you start switching down, and it looks like something's wrong with it," observed MacMillan. The over-under configuration helps to head off occupant complaints.

#### Daylighting Controls

The daylighting control system operates by step switching the lamps. There are four intermediate steps between full-on and full-off. Two photocell control zones run parallel to the windows. The first zone is 15 feet deep from the windows, and the second zone extends to 30 feet. At 25 footcandles of daylighting, the upper lamps in the two rows of luminaires closest to the windows switch off. At 50 footcandles, the second lamp in each of these luminaires goes off. As more daylight enters the space and light levels increase farther back in

*Circulation corridor (left) separates windows from workstations for universal access to the views. The large fixed overhangs protect against the sun when it is high in the sky. When it is lower (at sunset, in winter), computer-controlled miniblinds protect against the sun's glare and heat. The miniblinds automatically drop down to intercept this direct sun, diffusing and distributing the daylight. The large, continuous windows are visible throughout the open-plan offices. They provide a sense of space and of connection to the outside. Without the overhangs and the daylight savings, these expansive glass areas would not have been justifiable.*

the space, first the upper and then the lower lamps of the third and fourth rows of luminaires switch off. Each photocell is flush mounted in the ceiling and measures the light levels over a broad area below. The signals from the photocells are transmitted to the lighting control computer, which then switches the lamps off.

The daylighting controls work as a natural extension of the computer-controlled lighting controls for the building. The system operates and schedules the lighting under central

computer control; it eliminates hundreds of individual wall switches for the acres of open-plan offices and avoids the problems of having dozens of individuals manage the lighting. Most normal lighting control decisions are programmed into the central computer. Individual area override is possible when, for example, workers stay late. By placing a telephone call to the control computer and punching in a control code with the telephone buttons, authorized users can turn lights in their areas on or off.

This same computer system controls the motorized mini-blinds for sun control. The blinds stay up until two conditions are met. First, a photocell on the roof has to decide that the sun is shining. Second, the sun position schedule in the control computer has to determine that, for a given orientation, the sun is low enough in the sky to penetrate below the window overhang. This prevents the blinds from dropping down on cloudy days, or when the sun is high in the sky. As with the lighting controls, authorized personnel can instruct the computer to lower the blinds by phoning in a control code.

Some problems with photo-sensor calibration have reduced the effectiveness of lighting controls and have lowered the blinds more often than neces-



sary. These problems are being addressed by the building operators. One of the nice things about the centralized computer control system is that recalibration and fine-tuning of the daylighting controls can be done centrally, without having to modify hardware throughout the offices.

#### Atrium Design

Two atrium spaces in the building received special daylighting design attention. Located at the two elbows of intersecting wings near the center of the complex, each space is three stories high. Circulation space surrounds the atrium at each balcony level. Tall windows look out under the huge arch that connects the buildings. Supplementing the daylight from the windows are skylights. Daylighting provides the primary illumination to each atrium. At night, the electric lighting is subdued and low-key, focused primarily on the seating areas at floor level.

In designing the windows and skylights for the atrium

spaces, the architects balanced two conflicting needs. The glazing had to be large enough to lend a feeling of cheerful openness and to keep the indoor plants healthy. At the same time, the glazing area had to minimize unnecessary solar heat gain to prevent a huge energy penalty. Model studies and computer analysis by the daylighting consultants resulted in a compromise in glazing area. The resulting space is bright and pleasant even on dreary days, yet is not overflooded with light on sunny days.

In many ways, Pacific Bell's daylighting system is a textbook example for daylit offices. How likely is it to be adapted to other office buildings? Most of the people involved in the project expect it to be used less often than one might think. For one thing, many office building owners will balk at the extra costs of the overhangs, despite their demonstrated energy payback. Although they work well in this architectural context, they are undoubtedly more

expensive than a flat curtain wall system. Owners also hesitate to use the computer-controlled motorized blinds, which are a necessary adjunct to the overhangs. Although they have proven to be remarkably trouble-free in operation, they do require a relatively sophisticated building management staff to keep them functioning properly. The lighting control system is similar. Its complexity extends well beyond that of a typical office lighting system, although the building operators at Pacific Bell have mastered its operation and appreciate the flexibility and control it gives them to intelligently operate the thousands of lights in their charge.

Good daylighting design requires commitment by an informed owner, skill and study by talented designers and consultants, and thorough execution of an integrated design. The result in this case is a spectacular and beautifully functioning building. ■

*Mr. Mabone is a consulting architect with Charles Eley Associates, San Francisco. He specializes in building energy efficiency and daylighting design and was a member of the consulting team during the design of this project.*

*For product information, turn to page 62 and see Manufacturers.*





maximum view and openness without sacrificing the sun control. The blinds were chosen over fabric drapes for several reasons. Traditional drapes occupy 20 percent of the facade even when they are fully drawn back, effectively defeating the continuous views. Furthermore, they tend to be extremely opaque, which blocks daylight, or to be too open, which admits millions of pinpoints of sunlight. Although the miniblind slats are opaque and almost completely block direct sun penetration, they reflect and diffuse the direct sunlight up to the ceiling surface, and so contribute substantially to daylighting even while they protect the building from direct sun glare.

To minimize the hours when the blinds block the views, they are motorized and computer controlled. This also avoids the problems of individually controlled blinds in a large, open-plan office. It's an awesome experience to watch 360 feet of miniblinds descend together in perfect synchronization.

The resulting design is highly integrated. Says MacMillan, "Most people have no idea that it's doing what it does. It's a rather complicated aesthetic benefit, but it's definitely there. Everybody understood that when they started seeing the kind of windows that we were

able to provide. If you use a lot of glass and don't use it for daylighting, you just create a problem from an energy point of view. Here was a way to turn what could have been a disadvantage into an advantage."

#### Lighting Design

The lighting system was influenced both by the daylighting systems and by the office partitioning. The modular partitions are up to 5 feet high and are closely spaced. In order to minimize shadowing, the ceiling lights are also closely spaced, each covering only 52 square feet. This led to two-lamp luminaires, in order to avoid excessive concentrations of brightness and shadow. The system was designed for a maintained ambient light level of 50 footcandles, in line with IES recommendations for general office tasks. The resulting lighting power density averages 1.2 watts per square foot, a remarkably low number even in today's era of energy codes.

The selected luminaires are 1 foot by 4 feet, recessed into the ceiling system. The two lamps are mounted one above the other. The fixtures have polished aluminum reflectors and low-brightness, deep-cell parabolic louvers. The result is a low-glare, high cutoff angle luminaire with a 60 percent overall efficiency. The lamps are energy-

saving, 34-watt lamps, tandem wired between fixtures. Both supply and return air are handled through the fixtures, eliminating air grilles.

The other reason for the over-under lamp configuration was the daylighting control system. The controls first reduce electric lighting by turning off the upper lamp. Even though light output from the luminaire is reduced by 50 percent, the luminaire still appears bright. "One of the things about larger fixtures is that one of the cells goes blank when you start switching down, and it looks like something's wrong with it," observed MacMillan. The over-under configuration helps to head off occupant complaints.

#### Daylighting Controls

The daylighting control system operates by step switching the lamps. There are four intermediate steps between full-on and full-off. Two photocell control zones run parallel to the windows. The first zone is 15 feet deep from the windows, and the second zone extends to 30 feet. At 25 footcandles of daylighting, the upper lamps in the two rows of luminaires closest to the windows switch off. At 50 footcandles, the second lamp in each of these luminaires goes off. As more daylight enters the space and light levels increase farther back in

*Circulation corridor (left) separates windows from workstations for universal access to the views. The large fixed overhangs protect against the sun when it is high in the sky. When it is lower (at sunset, in winter), computer-controlled miniblinds protect against the sun's glare and heat. The miniblinds automatically drop down to intercept this direct sun, diffusing and distributing the daylight. The large, continuous windows are visible throughout the open-plan offices. They provide a sense of space and of connection to the outside. Without the overhangs and the daylight savings, these expansive glass areas would not have been justifiable.*

the space, first the upper and then the lower lamps of the third and fourth rows of luminaires switch off. Each photocell is flush mounted in the ceiling and measures the light levels over a broad area below. The signals from the photocells are transmitted to the lighting control computer, which then switches the lamps off.

The daylighting controls work as a natural extension of the computer-controlled lighting controls for the building. The system operates and schedules the lighting under central

computer control; it eliminates hundreds of individual wall switches for the acres of open-plan offices and avoids the problems of having dozens of individuals manage the lighting. Most normal lighting control decisions are programmed into the central computer. Individual area override is possible when, for example, workers stay late. By placing a telephone call to the control computer and punching in a control code with the telephone buttons, authorized users can turn lights in their areas on or off.

This same computer system controls the motorized mini-blinds for sun control. The blinds stay up until two conditions are met. First, a photocell on the roof has to decide that the sun is shining. Second, the sun position schedule in the control computer has to determine that, for a given orientation, the sun is low enough in the sky to penetrate below the window overhang. This prevents the blinds from dropping down on cloudy days, or when the sun is high in the sky. As with the lighting controls, authorized personnel can instruct the computer to lower the blinds by phoning in a control code.

Some problems with photo-sensor calibration have reduced the effectiveness of lighting controls and have lowered the blinds more often than neces-



sary. These problems are being addressed by the building operators. One of the nice things about the centralized computer control system is that recalibration and fine-tuning of the daylighting controls can be done centrally, without having to modify hardware throughout the offices.

#### Atrium Design

Two atrium spaces in the building received special daylighting design attention. Located at the two elbows of intersecting wings near the center of the complex, each space is three stories high. Circulation space surrounds the atrium at each balcony level. Tall windows look out under the huge arch that connects the buildings. Supplementing the daylight from the windows are skylights. Daylighting provides the primary illumination to each atrium. At night, the electric lighting is subdued and low-key, focused primarily on the seating areas at floor level.

In designing the windows and skylights for the atrium

spaces, the architects balanced two conflicting needs. The glazing had to be large enough to lend a feeling of cheerful openness and to keep the indoor plants healthy. At the same time, the glazing area had to minimize unnecessary solar heat gain to prevent a huge energy penalty. Model studies and computer analysis by the daylighting consultants resulted in a compromise in glazing area. The resulting space is bright and pleasant even on dreary days, yet is not overflooded with light on sunny days.

In many ways, Pacific Bell's daylighting system is a textbook example for daylit offices. How likely is it to be adapted to other office buildings? Most of the people involved in the project expect it to be used less often than one might think. For one thing, many office building owners will balk at the extra costs of the overhangs, despite their demonstrated energy payback. Although they work well in this architectural context, they are undoubtedly more

expensive than a flat curtain wall system. Owners also hesitate to use the computer-controlled motorized blinds, which are a necessary adjunct to the overhangs. Although they have proven to be remarkably trouble-free in operation, they do require a relatively sophisticated building management staff to keep them functioning properly. The lighting control system is similar. Its complexity extends well beyond that of a typical office lighting system, although the building operators at Pacific Bell have mastered its operation and appreciate the flexibility and control it gives them to intelligently operate the thousands of lights in their charge.

Good daylighting design requires commitment by an informed owner, skill and study by talented designers and consultants, and thorough execution of an integrated design. The result in this case is a spectacular and beautifully functioning building. ■

*Mr. Mabone is a consulting architect with Charles Eley Associates, San Francisco. He specializes in building energy efficiency and daylighting design and was a member of the consulting team during the design of this project.*

*For product information, turn to page 62 and see Manufacturers.*

# 1989 Lighting World International features seminars, exhibits

In keeping with its "Spotlight on Innovation" theme, 1989's Lighting World International will highlight the trends and applications that shape today's lighting design. Educational sessions feature leading architects, interior designers, lighting designers, contractors, and engineers. Nearly 500 domestic and foreign exhibitors will display and demonstrate the latest in architectural lighting fixtures and accessories.

The 1989 exposition and conference takes place May 10, 11, and 12 at the Jacob Javits Convention Center in New York City. Show managers report that 35 percent more European and Asian manufacturers are exhibiting than took part in the 1988 show in Los Angeles, and they expect buyers and specifiers from more than 50 countries.

A special product preview session will showcase the most innovative products from this year's exhibitors. A social evening at the South Street Seaport rounds out the first day. A schedule of events and speakers follows.

Wednesday, May 10

**Opening breakfast and keynote address** (9:00–10:30 a.m. Speaker: Charles Gwathmey, FAIA, Gwathmey Siegel & Associates). Internationally known architect Charles Gwathmey, FAIA, will speak on the relationship of light and lighting to architecture at the opening breakfast. "Light and space have been eternally inseparable in architecture," Gwathmey says. "Lighting, with light and space, is the necessary enrichment that allows for controlled variation and complementary articulation. The more sophisticated and the more integrated the mutually supportive disciplines become, the closer essential harmony is realized."

Gwathmey received his Master of Architecture degree from Yale; he also studied in Paris as

*Lighting World International is sponsored by the International Association of Lighting Designers, the Illuminating Engineering Society of North America, and the New York Section of the Illuminating Engineering Society.*

a Fulbright scholar. Among his numerous awards and honors are the Arnold W. Brunner Prize from the American Academy Institute of Arts and Letters, the Medal of Honor from the New York chapter of the American Institute of Architects, and, most recently, the Yale University Alumni Arts Award from the School of Architecture. Over the years, he has been a visiting professor at numerous schools of architecture, including those at Yale and Harvard.

Gwathmey has been a principal of the architectural firm Gwathmey Siegel & Associates since its founding in 1968. Among the firm's best-known projects are the renovations and additions to the Guggenheim Museum in New York, the Whig Hall Student Center at Princeton University, and the Busch Reisinger/Fine Arts Library addition to Harvard University's Fogg Museum.

**Using color as light** (11:00 a.m.–12:00 noon. Speaker: Peter Barna, president, Light & Space Associates, Ltd.). At this session designers can learn to see colors and finishes as light and learn how to use that knowledge in selecting light source color, lighting quality, and fixtures for such applications as fine arts, architecture, and interior design projects.

**Preview of products — The latest in lighting** (1:00–2:30

p.m. Presenters: Mitchell Kohn, architectural lighting consultant; Andre Tammes, Lighting Design Partnership). A 90-minute survey features the latest fixtures, sources, and controls chosen by a panel of IALD and IES experts from the newest lighting products on the show floor.

**Lighting the contemporary workplace** (3:00–4:00 p.m.

Speaker: Kenneth G. Loach, lighting consultant-specialist, H.H. Angus & Associates, Ltd.). This session on office lighting emphasizes areas that have video display terminals (VDTs). Topics include task-ambient, total indirect, and direct-localized general lighting; furniture placement for areas with VDTs; current and proposed VDT legislation; energy conservation; and controls.

**An evening at the South Street Seaport** (7:30–10:30 p.m.). A popular New York City attraction, the South Street Seaport is a historic district of restored 19th-century buildings. Show participants can wander among more than 100 shops, a maritime museum, and other entertainment opportunities. Then, at the Ocean Reef Grille, Lighting World International hosts a buffet dinner, dancing, and an open bar.

Thursday, May 11

**Cost-effective lighting: A guide for owners and designers** (9:00–10:00 a.m. Speaker: Helen Diemer, director of lighting services, Flack + Kurtz Consulting Engineers). Designers can plan lighting systems that maximize a building's marketability and minimize its operating costs. This session will address flexibility, light quantity, sources, fixtures, ballasts, controls, lamp life, and maintenance schedules.

**Assessing luminaire quality** (10:15–11:15 a.m. Speaker: Denison W. Schweppe, Jr., Schweppe Lighting Design, Inc.). With thousands of luminaires on the market, architects

and interior designers need to know how to evaluate quality and performance. This session will give designers some basic tools for assessing luminaires. Topics include some ways that cost and quality are related, how to evaluate materials used to make luminaires, and how to compare photometrics. Other subjects include details and craftsmanship, what UL means, and how to determine whether a substitution is equal.

**From specification to construction: A panel discussion on the players and the process** (11:30 a.m.–1:00 p.m. Panelists: James Beyer, The Stubbins Associates; Gersil Newmark Kay, Morris Newmark & Bro., Inc.; Stephen Lees, Horton Lees Lighting Design, Inc.; Mary Tatum, Lightolier; Larry Vail, Summers Electric Co. Moderator: Charles Linn, *Architectural Lighting*). Panelists will offer a variety of opinions on the factors and priorities that guide architects, interior designers, lighting designers, distributors, manufacturers' representatives, and contractors as a lighting design progresses from concept to installation.

**Putting together a lighting design: A workshop by the Designers Lighting Forum of New York, Inc.** (2:00–5:00 p.m. Panelists: Raymond Grenald, FAIA, senior partner, Grenald Associates, Ltd.; Christopher H. Ripman, president, Ripman Lighting Consultants; Lesley Wheel, Wheel Gersztoff Friedman Shankar Associates, Inc.; Charles E. Pavarini, III, design partner, Pavarini-Cole Interiors, Inc. Moderator: Connie Jensen, principal, Lighting Professionals, Inc.). During this three-hour workshop on contract and residential lighting projects, participants will work with three leading lighting consultants to create preliminary lighting designs for a multi-use conference room, a skylit marble bath, and a soaring residential interior. Panelists will discuss their own solutions.

**Lighting: A business opportunity for electrical contractors** (2:30–3:30 p.m. Speaker: William T. Hirons, lighting specialist, Guild Electric, Ltd.). The speaker will discuss what makes lighting more than just an item in the electrical bid package and what contractors should know about lighting in order to develop it into a profitable area of new business.

**Computer lighting analysis and simulation: A survey for lighting designers and engineers** (3:45–4:45 p.m. Speaker: David Lord, PhD, professor of architecture, California Polytechnic State University, San Luis Obispo). The session will cover various software applications, including point-by-point and lumen-method microcomputer programs (see sidebar).

Friday, May 12

**Project management: A workshop by the American Society of Interior Designers** (9:00 a.m.–12:00 noon, continues 1:30–3:30 p.m. Speaker: David A. Rinderer, vice president, Practice Management Associates, Ltd.). This five-hour workshop will examine the responsibilities of project management and the project manager's role in marketing and profit making. Participants will learn how to plan for multiple priorities, how to bring a project in on time and on budget, how to prepare a project plan, and what technical responsibilities a project manager should assume. Completion of the workshop entitles participants to 0.6 CEU from the ASID.

**Basic lighting controls: A guide for architects and interior designers** (9:00–10:00 a.m. Speaker: Stephen Margules, lighting design director, Cosentini Associates). This session will provide an overview of basic control system concepts and components, including daylight balancing, occupancy sensors, automated time controls, and local dimming and

switching. This information will help architects and interior designers communicate design concepts more clearly to lighting consultants and engineers on their project design teams.

**Lighting for historic preservation projects** (10:15–11:15 a.m. Speakers: Paul Marantz, principal, Jules Fisher & Paul Marantz, Inc.; Malcolm Holzman, partner, Hardy Holzman Pfeiffer Associates). A lighting designer and an architect will present various philosophies of lighting historic buildings, focusing on this issue: Should the lighting be historically accurate or adapted for modern eyes? Speakers will present examples from their own work, discussing how they arrived at solutions and what they considered along the way.

**Using theatrical techniques in architectural lighting** (1:00–2:00 p.m. Speaker: Mark Kruger, principal, Kruger Associates, Inc.). Theatrical lighting techniques are being applied to such spaces as restaurants, nightclubs, and even to corporate image areas. The speaker will discuss how theatrical techniques of angle, color, texture in light, and controls can be transferred to the architectural arena.

**Retail lighting as an aid to sales** (2:15–3:15 p.m. Speaker: Stefan Graf, Illuminart). At this session, participants can learn how to use lighting to attract attention, generate excitement, motivate customers, and stimulate sales. Lighting systems and accessories to be discussed include louvers, lenses, filters, pattern projectors, and specialty control devices applicable to retail projects. ■

*The program is subject to change; be sure to pick up a copy of the final version when you arrive at Lighting World. For further information, contact National Expositions Company, Inc., 15 West 39 Street, New York, NY 10018, (212) 391-9111.*

## Columnist to present Lighting World seminar

Computer imaging may one day replace hand renderings and cardboard models for lighting design. Already lighting designers and architects can calculate, create, and compare designs using lighting design software.

"Computer imaging provides a preview of a finished design. With a desk-top computer and a drafting package, a designer can visualize a space and eliminate surprises," says Software Reviews columnist David Lord.

Lord, an architecture professor at California Polytechnic (San Luis Obispo), will present "Computer Lighting Analysis and Simulation: A Survey for Lighting Designers and Engineers" during Lighting World International. "Designers have access to more and more computer-aided design and drafting packages," he says, "including third-party lighting design software that works with architectural design programs like VersaCAD, CADAM, CADKey, and AutoCAD."

Depending upon a project's size and complexity, it can take up to several hours to enter all the data required about surfaces and specifications. Then designers can process extensive calculations that would be extremely tedious with hand rendering. "The real time savings of computer imaging are realized when redesigning or revisions become necessary. Then a designer can move a source or change the reflectivity of a surface quite easily on the computer," Lord says. To achieve the same level of accuracy could require weeks with hand rendering.

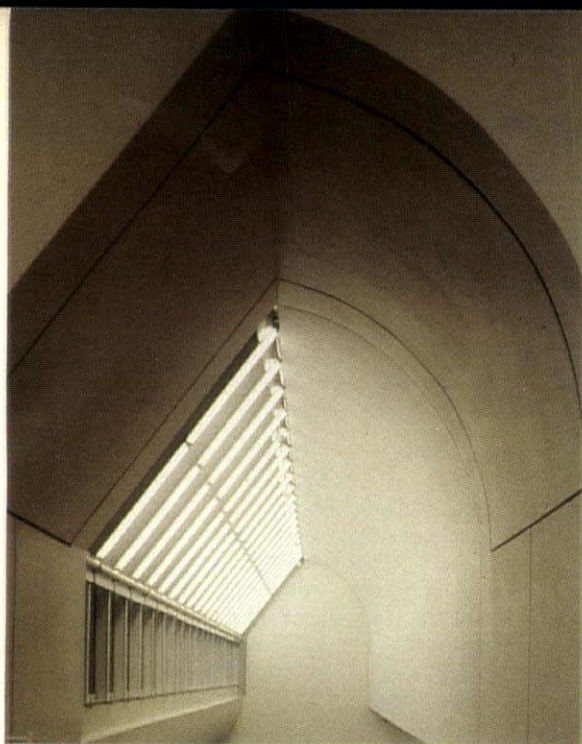
"Computer imaging opens the door to more excitement," Lord says. "It allows

designers to try more combinations and solutions to improve lighting quantity and quality — all with minimal effort. The process is especially valuable if a specified fixture or source is unavailable in time for construction. A revised design that features alternative light sources can be planned within a day."

When energy resources or operating budgets are limited, computer imaging facilitates achieving a design that regulates electricity consumption and reduces costs by maximizing the use of daylight. This is a particularly practical feature in California, where Title 24 restricts energy use in new buildings. Computer imaging simplifies the process because designers can avoid making daylighting calculations by hand.

Computer imaging also facilitates interaction between clients and designers, so clients can more easily approve steps in the design process. "Final products can then more closely match what clients want," Lord says, "because they have an opportunity to see well ahead of time what the results will be. And their questions can be addressed immediately."

Lord estimates that less than 10 percent of architects and lighting designers currently work with lighting design software. "As with any form of progress," he says, "it takes time for people to become aware and to train themselves to use the new technology. But the time and money savings that result far outweigh the investment in time." Visitors to Lighting World can learn more about the advantages of this technology at Lord's seminar.



Now in America to fulfill the unique vision of the elite specifier.

The world's finest architects, designers and consultants have consistently chosen Zumtobel as the one company best-suited to fulfill their inspired vision of lighting.

Now Zumtobel has made a major commitment to bring the full range of its resources to the American specifier: Luminaires that far exceed U.S. standards. A state-of-the-art manufacturing facility in Garfield, NJ. Unmatched advisory and support services. Uncompromising quality.

For further information and the name of your local Zumtobel Sales Representative, please contact us at: Zumtobel Lighting, 141 Lanza Avenue, Bldg. 16D, Garfield, NJ 07026 FAX 201 340-9898.

Circle 17

**ZUMTOBEL**

LIGHTING  
THE WAY

## Seattle market shows super market lighting to shoppers

"We wanted to capture the romance of the 1940s and 1950s," says interior designer Suzi McKinney when she talks about an award-winning Larry's Market in Seattle, Washington.

**Project:** Larry's Markets Oak Tree Store

**Location:** Seattle, Washington

**Architect:** Carlson/Ferrin Architects, Donald Carlson, Kevin Kane

**Interior Designer:** Suzi McKinney

**Photos:** J.F. Housel

**Barbara-Jo Novitski**

*Barbara-Jo Novitski is an architectural technology writer in Eugene, Oregon.*

"We wanted to create a happy attitude about food, so we designed the lighting to remind our customers of old-fashioned, wholesome freshness. We wanted to create an atmosphere of a big, open-air market, so we provided live trees and lots of daylight."

McKinney and architect Don Carlson crafted a variety of spaces within the large Oak Tree market, paying careful attention to the lighting, as well as to the spatial composition, in developing the specialty areas. "For the central part of the market we wanted an image of a 'food factory,'" says Carlson.

"We selected the materials and a roof form to match the way the grocery store works." The central part of the store has a raised roof with exposed steel trusses and metal decking. The decking is painted white and uplit with 400-watt metal halide lamps in high-bay warehouse-type fixtures. The architect developed special connection details to transform these conventional downlights into custom uplights. They are on an energy-saving control system; whenever daylight provides enough ambient light, some of them are automatically switched off. This guarantees enough



light at night while keeping overall energy consumption down.

"To maximize daylight," says Carlson, "we put in 5-foot-high clerestories all around the perimeter of the raised roof. The effect is a pleasant light that penetrates to the interior of the large space." At first the store managers had some problems with the direct sunlight. A few times a year, sunlight would hit the bulk foods area and melt some candy. To solve this problem, the managers moved products less sensitive to heat into the problem area.

In contrast to the high-ceilinged, daylight and uplit cen-

tral area, the specialty areas around the perimeter of the store have lower, dark green ceilings and are illuminated with silver-bowl incandescent lamps fitted into standard industrial reflectors. The bakery, smokehouse, produce, seafood, and wine departments are designed to show off preparation processes. McKinney explains that customers frequently spend more time in specialty service areas than in other parts of the store, and they often stop to watch the food preparation. "We light the product directly," she says, "to focus the customer's eye, to cre-

ate a visual magnet. We use incandescent downlighting in combination with the fluorescent lighting that is built into the refrigerator cases. I like to use warm incandescent light to emphasize the color and three-dimensional characteristics of food. I think of this perimeter lighting as stage lighting."

A produce grocer who wants to warm the colors of the fruit and vegetables must be careful that the lights do not also warm the food. The trick is to mount the lights at the right height. Placed too high, they cause glare; too low, they spoil the produce. And even a theoreti-

*Specialty areas are lit with incandescent downlights and decorative neon. Clerestories provide daylight for the central part of the store. Metal halide warehouse lamps light a white metal ceiling and the exposed roof structure to help create an open-air market atmosphere.*

cally optimum height doesn't always work in practice. McKinney explains, "We can specify a proper height for the lights, but it works well only until a produce clerk inadvertently stacks the apples up too high. They've



*Light in the cafe (top left) results from ever-changing balance of daylight, metal halide uplights, and neon. Downlights, at a height calculated to minimize glare and heat, emphasize the colors and shapes of fresh produce (bottom left). Billboard graphics evoke nostalgia for the 1940s and 1950s. Like other specialty areas, the fish market is lit by neon and downlights (top right). Nighttime shows off the neon apple, mounted in an 8-foot steel framework (bottom right). The brightly lit cafe below draws local moviegoers.*

had to learn how to limit the height of the displays. We also use low-wattage lamps because we don't need a strong light source; we only need to get the customers' attention and to create rich colors, shadows, and contrast."

For the large murals around the store's perimeter, McKinney designed "caricature graphics" and drew upon images of the 1940s and 1950s. The dancing vegetables billboard, for example, shows Dick, Jane, and Spot riding in a car through farm country. It is illuminated with 150-watt incandescent uplights that bring out the vibrant colors. The industrial reflectors themselves are a decorative element.

"We see children looking up at the picture and learning vegetables pictorially," says McKinney. "For me, it's a frolicking, positive fascination with childhood memories. I remember the first time I learned that corn didn't necessarily come in a can. It's an important awakening for a young person to understand where their food comes from and how many people are involved."

In contrast with the central market and specialty areas, the check-out area near the front of the store is illuminated with



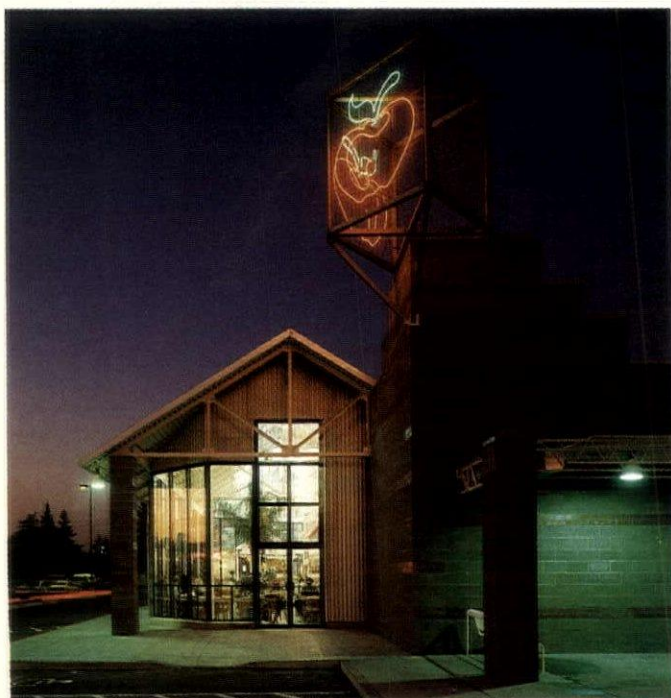




ers coming out of a nearby movie theater.

Carlson and McKinney both contributed to the neon design. Carlson designed the exterior sign. The huge apple, in red and green neon, is attached to woven wire mesh on an 8-foot steel framework. McKinney designed all of the decorative neon inside. "To design with neon," she says, "you need to understand the limitations and possibilities of the medium. You need to know which gases and tube coatings combine to produce particular colors. I'm excited by the new colors available — like the coral we used in the deli and cafe. Neon can have a dramatic coloring effect on everything around it, so as you design, you need to see it in the context of the other materials. With neon samples in a lighting box, you can make good comparisons with paint and material samples. New small-diameter neon has opened up exciting possibilities because small-radius curves are possible in the neon bends. We can put rows of neon closer together and get more intricate designs. The colored plastic wrap for neon tubes allows for more color choices, but I think they look artificial. I like neon for what it is, and I like to limit its use."

From decorative neon to large-scale billboard graphics, from an "open air" central market to intimate specialty food shops, Carlson and McKinney have succeeded in creating a wide range of environments, each influenced by their choices in lighting systems. The resulting vibrancy encourages shoppers to enjoy the experience of shopping. Says McKinney, "With the packing shed imagery, we're emphasizing the fact that we're a warehouse of many things, from low-cost bulk foods to expensive caviar. We've tried to link all these images together, to be all things to all people." ■



175-watt metal halide downlights. The architect's goal was to create a bright, even light level 24 hours a day, to demonstrate that the store is continuously busy. "There's a lot of glass across the front," explains Carlson. "At night when you see the store from the outside, it's all lit up and looks like magic."

Near the entrance to the store is a small cafe with a variety of lighting devices: skylights, metal halide uplights, floor-to-ceiling windows, and neon. The blend of lighting changes throughout the day. Early in the morning, before the sun hits the skylights, the neon and the metal halide dominate. Around midday, the cafe is flooded with daylight. Then in the evening it's entirely lit by neon and metal halide. This dramatic lighting draws custom-

## Distinctive library luminaires reiterate circular design motifs

Lighting for the Benjamin S. Rosenthal Library does more than aid reading and writing. It's also an integral part of the building's architectural design. In the main reference reading room and other key areas, specially designed luminaires reiterate a circular motif and contribute to the feeling of openness and spaciousness in the building's grand spaces.

Susan Degen

*Susan Degen is assistant editor of Architectural Lighting.*



PETER GOODMAN

© CERVIN ROBINSON 1988

**Project:** Benjamin S. Rosenthal Library

**Location:** Flushing, New York

**Client:** Queens College, City University of New York, and Dormitory Authority of the State of New York

**Architect, Interior Designer:** Gruzen Samton Steinglass; Peter Samton, partner-in-charge; Robert Genchek, project designer; George Yourke, George Luaces, project managers; Nicholas Lombardo, interior designer

**Lighting Designer:** Theo Kondos Associates, Steven Bliss

**Electrical Engineer:** Syska & Hennessy

**Landscape Architect:** Saratoga Associates

The library's main entry lobby, circulation desk, and main reference reading room are on the third floor of the six-story structure. The two-story lobby, at one end of the building, is enclosed by a curved glass wall. At the other end, the main reference reading room fans out in a quarter circle, bordered on two sides by book stacks and on the third by its own curved glass wall. The main circulation area is between these two spaces in a bright, skylight-crowned rotunda.

The rotunda, reading room, and lobby establish a circular design motif that is repeated in the building's major lighting elements. "It's part of a vocabu-

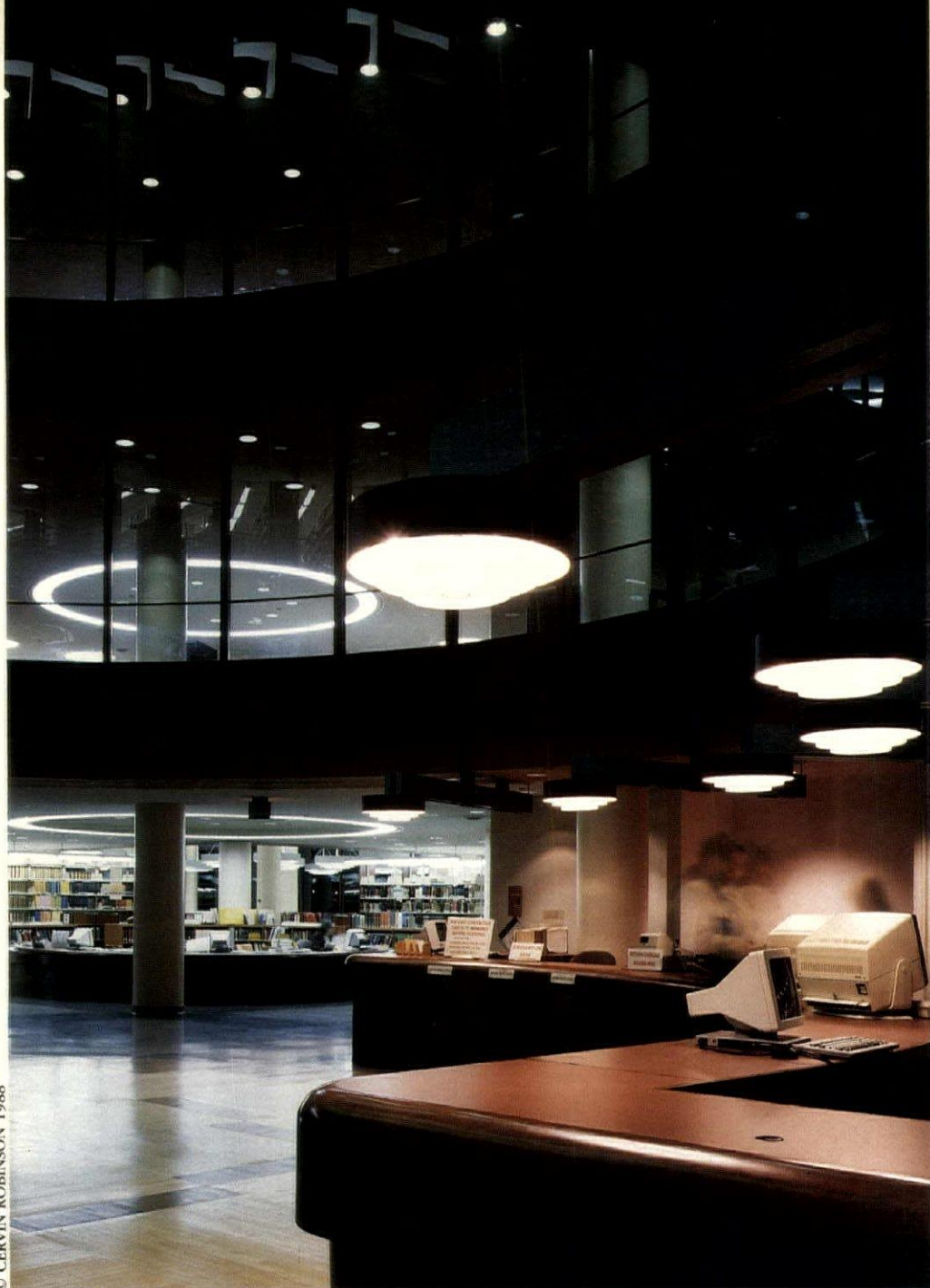
lary," says lighting designer Steven Bliss. "We created a series of decorative fixtures that mimic the rotunda area." Circular luminaires light the reading rooms on each floor. Circular fixtures cantilever over the main circulation desk. Circular soffits light key information, lounge, and stair platform areas.

### Light for Reading

The library's main reference reading room is a focal point of the building with its high ceilings, curved glass wall, and huge circular luminaires. The 5-foot-diameter luminaires add balance to the large, open space. "We wanted personal touches and a human scale to

make people feel comfortable," says Bliss. "You feel very, very small sitting at a table in a large space with a 20-foot ceiling. Having elements that break the space down was part of the approach."

The distinctive custom-manufactured luminaires hang on long stems from the 20-foot-high ceiling of the main reference reading room. "The design intent was to have a special type of fixture and a special character for that one area," says Bliss. The luminaire's design consists of three concentric step louvers with a white acrylic overlay that conceals eight standard warm white fluorescent tubes laid side by



side. Four aircraft cables, stretched from the middle of the stem to the outside louver, stabilize each unit.

To fit straight fluorescent lamps into round luminaires, Bliss used 3-foot tubes at the edges and 4-foot tubes in the center. "Their colors are compatible in those lengths," he says. "The warm white is more complimentary to skin tones and has a higher output than the cool white. We didn't use 2-footers anywhere in the building because of the color shift."

Reading rooms are on each of the floors, but only the high-ceilinged main reference reading room can accommodate the visually massive stem-mounted

luminaires. To create a similar visual impact in reading rooms with ordinary ceilings, the designers created a recessed version of the fixture. A smaller version of the reading room luminaire is used at the main circulation desk to continue the fixture vocabulary into the rotunda. Here, the circular, triple-louvered units are mounted on large beams cantilevered over the main desk. Eight incandescent lamps in this version are arranged around a PAR 38 spotlight like spokes around a wagon wheel hub.

**Stacks and Information**  
Book stacks fill much of the library's 252,000 square feet of

gross area. On upper floors, windows in the walls surrounding the cylindrical, skylit rotunda bring daylight deep into the building. People looking up from the main circulation desk in the third-floor rotunda can see shelves of books on the two floors above. Stack areas are illuminated by lengths of stem-mounted, shielded linear fluorescent luminaires mounted between rows of bookshelves.

Bold concentric rings of recessed cold cathode tubes signal the location of large, circular information and reception desks throughout the library. "Cold cathode is a linear light source, an unbroken line of light," says Bliss. "We used it in

a number of places to accentuate these desks. No matter what floor you're on, when you see cold cathode you know you've got an information desk." Dry-wall pop-ups above the desks support rows of cold cathode tubes.

Used over information desks and in stairwells, the cold cathode system produces more than a decorative effect. It provides about 300 lumens per foot of functional light, Bliss says. "We gang four rows of cathode, and it's more than enough light for operations at the desk. We've used cathode in many projects as a functional tool as well as a graphic tool. In fact, it's in the drafting area in our office; we work under it." The lamp manufacturer is near the college, which makes it easier for the client to maintain the system, Bliss explains. Because the manufacturer keeps lamp templates on file, lamps can be replaced quickly.

Many luminaires in the building serve a dual function as light sources and as architectural elements. As light sources, they provide sufficient illumination for the reading and writing tasks that are common to every library. As architectural elements, they echo themes established in the architectural structure. The distinctive luminaires in the reading rooms and the cold cathode rings over information desks also work graphically as identifiable reference points for particular activity areas throughout the building. ■

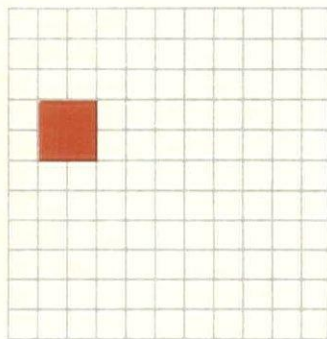
*For product information, turn to page 62 and see Manufacturers.*

# Software Reviews

Potentially a useful tool for architects and engineers, CD-ROM (compact disk read-only memory) has been ready and waiting on the sidelines for two or three years. A close relative of CD-ROM, the audio compact disk, has gained wide acceptance as the recording industry standard; sales of each CD can number in the millions. Until recently, CD-ROM was slow to penetrate the end user computing market, partly because its producers were reluctant to invest in expensive disk mastering and duplication for limited distribution. During the past few months, however, many stumbling blocks have been removed, particularly in the areas of cost-effectiveness and the availability of players and titles. Mastering a CD-ROM disk now costs about \$1500, and duplicating one costs about \$2 per disk.

Sweet's Goes Electronic Sweet's Catalog, first introduced in 1906, is going electronic; product databases on CD-ROM disks will aid architects and engineers in selecting products and writing specifications. With SweetSearch, a proprietary system that searches product databases, designers can find products with criteria of their own choosing. SweetSearch assures users that every relevant product in Sweet's Catalog Files will be found. This could be important if you are looking for a lighting system that might be listed under any one of several categories — as a ceiling system or as a lighting fixture.

Sweet's system also allows better product comparisons with a uniform product profile. For instance, it allows a tabular comparison of such properties as the solar transmittance or the U value of all skylights listed in Sweet's. Another product, SweetSpec, will provide fully customized specifications tailored to the requirements of an individual project and "tuto-



## CD-ROM: Off the sidelines and into designers' hands

David Lord, PhD

*David Lord is a professor of architecture at California State Polytechnic University, San Luis Obispo.*

rials" for help with decision making.

Electronic Sweet's will also make available CodeControl and CodeAnalyst — two information services from Codeworks Corporation that give project-specific code information applicable to each phase of design. CodeControl will generate a topically organized listing of all applicable code regulations specific to each project and location. Several categories are being developed, including mechanical, energy, life safety, and fire prevention. The companion program, CodeAnalyst, allows the designer to immediately determine the construction type classification and the critical code issues affecting the building design during the early planning and schematic design phases. Electronic Sweet's offers a demonstration disk that shows off most of the program's capabilities.

In addition, for a limited time, NEC is offering a promotional price on a CD-ROM reader. The reader works with

the IBM family and compatibles and with the Apple Macintosh series.

### Words and Pictures

Many other applications for the CD-ROM reader are just now gathering steam. Already available on compact disk are a 21-volume encyclopedia and the original *Oxford English Dictionary*.

Graphics, which can often take up most of a floppy disk, are now available in a variety of CD-ROM graphics libraries. NEC offers Clip Art 3-D, a collection of graphic images that can be rotated in three dimensions and included in your own documents. The list of available disks is increasing rapidly. And most CD-ROM readers also allow you to play the ubiquitous audio compact disks with a hook-up to your stereo.

Specification writing is becoming a less formidable task, thanks to the computerization of both specifications text and coordination functions. If specification writing is your forte — or your nemesis — then MasterSpec is worth considering; it reduces the drudgery of spec writing. MasterSpec has been a standard for 20 years and is used today by about 20,000 designers. It comes in three editions, each covering a portion of the Construction Specifications Institute (CSI) divisions: architectural/structural/civil (divisions 1-14), mechanical/electrical (divisions 15-16), and interiors (divisions 1-14).

MasterSpec comes in a loose-leaf notebook reference library. For about double the price, you can get both the loose-leaf notebook and a diskette library, formatted for more than 50 computer and word processing combinations — the IBM PC and WordPerfect, for example. The MasterSpec system is organized in modules, from which you can generate a cover sheet, specification text, evaluation sheets, and drawing-spec coordination

### Electronic Sweet's

Dan Zurich  
McGraw-Hill Information  
Services Company  
1221 Avenue of the  
Americas  
New York, NY 10020  
(800) 848-9002

### NEC Home Electronics

Electronic Sweet's  
Order Desk  
P.O. Box 660043  
Dallas, Texas 75265  
(800) 742-2255

### MasterSpec

Sarah Galloway  
American Institute  
of Architects  
1735 New York Ave. N.W.  
Washington, D.C. 20006  
(800) 424-5080

sheets. Specification text sheets are taken from broad text on disk and edited for each project.

One nice feature is the reference material provided at the end of the specification. For instance, if you are writing a specification for exterior lighting fixtures, MasterSpec suggests you have several specific references at hand from the NFPA, NEMSA, IES, ANSI and Underwriters Laboratories. A suggested exterior lighting fixture schedule is also included in this section.

The obvious payoff of all this is that the less time you spend searching for products that meet your design requirements, the more time you'll have to design. The less time you spend on writing specifications, the more production time you'll have. ■

*The software review columnist welcomes reader comments and software review suggestions. Write to David Lord, Architecture Department, Cal Poly, San Luis Obispo, CA 93407.*

# Engineer, being in part of a great idea.

With Sylvania Designer 16 lamps, you get performance efficiency similar to low voltage light sources but with some very big differences—no bulky transformers, no expensive add-ons, no extra costs, and no inconvenience.



**Look ma! 120 volts. No transformer.**

Plus you get bright white light and excellent color rendering.

Lighting that brings out the best in suits, dresses, mannequins, even hard-to-light jewelry and glassware.

Perhaps that's why Esprit, with its young, spirited clothing, decided on going high tech all the way with Designer 16 lamps lighting up their merchandise.

Esprit found that Designer 16 lamps offered better savings than standard MR 16 lamps. They also found out something else that's very interesting.

**Esprit added just the right spirit to their stores with Designer 16 lamps.**

Store managers tend to be intimidated by transformers and baffles. So these people were reluctant to replace burnt out bulbs by themselves. But Designer 16 lamps were so easy to change that maintenance was simplified.

And you thought a light bulb was just a light bulb.

**We offer more energy saving lighting and best of all it's made right here.**

Designer 16 lamps are just one example of our obsession with lighting. At GTE Sylvania, we can help you upgrade practically any lighting system. So if your lighting is more dark ages than state-of-the-art, call us at 1-800-LIGHTBULB or contact your nearest Independent Electrical Distributor.

We'll help make you as obsessed with lighting as we are. Which will do wonders for the traffic in your store.

**SYLVANIA** **GTE**  
**WHERE THE BEST COMES TO LIGHT.®**

Circle 19

Look for us in booth 1203 at LIGHTING WORLD



# Lighting Graphics

My previous column reviewed the fundamental problem associated with under-cabinet task lighting: the presence of reflected images of the light source on the task, which reduces contrast and visibility. Small-cell plastic louvers were suggested as one way of shielding the light source to minimize veiling reflections.

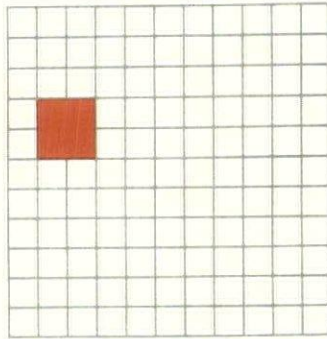
Designers of lighting equipment and furniture systems have recognized this problem for many years. Their efforts to resolve it have produced a number of innovative solutions that offer significant reduction of veiling reflections.

With the knowledge that light directed sideways — away from the viewer's eyes — effectively reduces veiling reflections, they designed light fixtures that concentrate light in a direction 90 degrees to the task. They've accomplished the reductions by shielding light sources with special louvers or lenses that direct the light sideways and by placing sources on either side of the task area. Some of the luminaires designed for this application are shown in the accompanying illustrations.

Fixture type A is for individual workstations and uses 13-watt compact fluorescent lamps positioned on each side. The light is controlled with reflectors and adjustable lenses that direct the light sideways, substantially reducing veiling reflections.

Type B uses rapid start fluorescent lamps in 2-, 3-, and 4-foot lengths and a special lens that directs three to four times more light sideward than forward, also resulting in significantly reduced veiling reflections.

Fixture type C, shown here mounted on simple extruded aluminum housings, is another way to use 13-watt compact fluorescent lamps. These lamps fit easily under wall cabinets, requiring only some added hori-



## More about under-cabinet task lighting

Sam Mills, AIA, IES

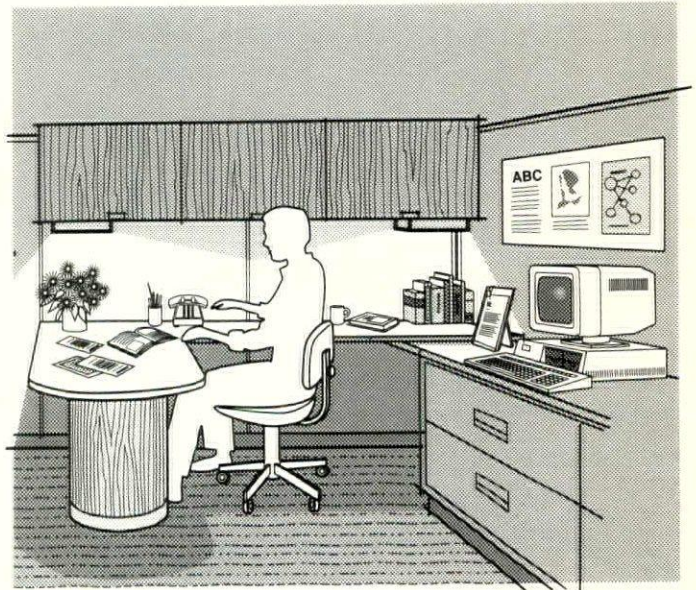
*Sam Mills is an architect and lighting consultant with his own firm in Oklahoma City.*

zontal shielding of direct glare. When positioned 3 to 5 feet apart, they also furnish excellent task lighting with reduced veiling reflections — but only between lamps, to the side of any forward directed light.

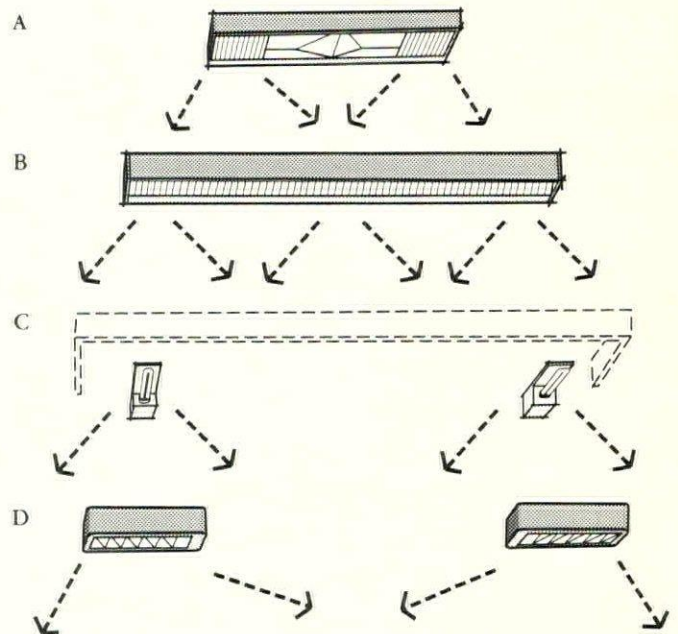
Type D fixtures are twin units that also use compact fluorescent lamps and are connected by a flexible cord. Users can choose a fixture with one or two lamps in each unit and louvers to direct light sideways.

Any of these fixtures can be used effectively to minimize veiling reflections associated with under-cabinet lighting. Determine the ones best suited for your specific applications based on product testing and individual preference. ■

*For product information, turn to page 62 and see Manufacturers.*



*A variety of under-cabinet task lighting fixtures are available that direct the light sideways to minimize veiling reflections.*



*A: Individual workstation unit that has compact fluorescent lamps at each end and special reflectors and adjustable lenses to direct light sideways. B: Linear fluorescent unit with special prismatic lens to direct three to four times more light sideways than forward. C: Compact fluorescent lamp modules spaced 3-5 feet apart. D: Tandem-wired twin units with one or two lamps in each unit and louvers to direct light sideways between units.*

## **HOLOPHANE PRISMATIC LIGHTING HELPS PICK UP PROBLEMS BEFORE THEY BECOME A PROBLEM.**



**I**ndustrial illumination is more demanding than almost any other application. Contrasts are lower, action takes place over a far greater vertical range, and glare is inescapable when task location or angle can't be adjusted.

Worst of all, the resulting shortcomings can be far more costly here than in any other environment.

Industry needs better lighting, and Holophane responds with



PrismGlo,<sup>™</sup> a prismatic fixture that uses hundreds of tiny prisms to fine tune light direction and distribution. It improves contrast, defines form and texture, and reduces glare. Lighting distribution is balanced between upward (reflecting off the ceiling) and downward (directly on the work surfaces). So both the task and its environment are lit, eliminating the undesirable "cavern" effect.

For more information on the best improvement you can make

to your most critical environments, see your Holophane representative or write Dave Meredith, Holophane, 214 Oakwood Avenue, Newark, Ohio 43055. (614) 349-4118.



**HOLOPHANE**  
LEADER IN LIGHT CONTROL

## Product Showcase



### ■ Brass lantern

Solid brass Monterey indoor-outdoor lanterns from Arroyo Craftsman come in a free-hanging version and wall- and column-mounted versions. Each lantern is individually assembled and has a verdigris patina finish. Four sizes and four glass colors are available. Arroyo Craftsman Lighting Inc., Duarte, CA.

Circle 60



### ■ Table lamp

The Piedra table lamp from Aamsco has a base and stem of solid, stonelike Corian and a perforated metal shade. A half-silvered incandescent lamp casts light downward on work surfaces. The 14 1/2-inch-high table lamp comes in light and dark gray. Aamsco Manufacturing, Inc., Jersey City, NJ.

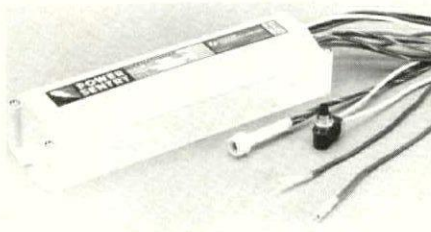
Circle 61



### ■ Cedar lamp pole

The Woodlands lamp pole from Ryther-Purdy is made of solid or laminated western red cedar in heights to 40 feet and widths from 4 to 12 inches. The straight, square shaft has chamfered corners that give it a tapered look. The pole can accommodate top- or side-mounted fixtures or arm mounts from other manufacturers; it can be combined with the company's custom-made guide rail fences, as shown. Ryther-Purdy Lumber Company, Inc., Old Saybrook, CT.

Circle 62

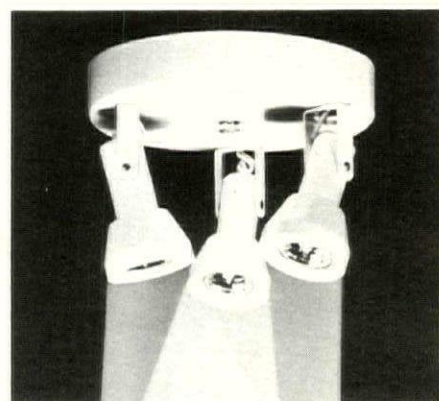


### ■ Fluorescent emergency pack

The Power Sentry PS300 from Lithonia Emergency Systems is a compact, economical emergency battery pack that converts an ordinary 2-by-4 fluorescent fixture into an emergency lighting unit. It operates one lamp in the fixture for 90 minutes when normal AC power fails, thereby elimi-

nating the need for separate emergency lighting units, and can be installed in the wireway of existing fixtures in less than 30 minutes. It is compatible with rapid start and slimline systems in standard and energy-saving configurations. Lithonia Lighting, Conyers, GA.

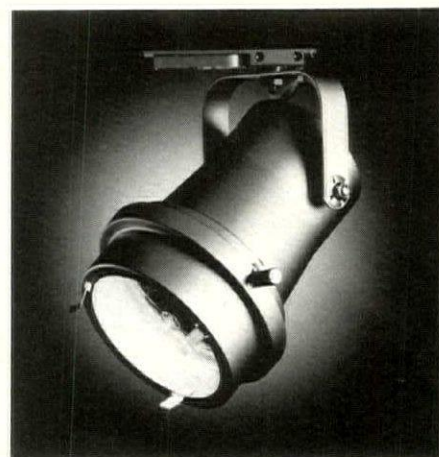
Circle 63



### ■ Halogen ceiling fixture

Roxter's model 9183 Triple Mini halogen ceiling fixture is designed to accent sculptures and paintings. Each of its three lamp holders has a universal swivel that allows individual adjustment for precise highlighting of an object. The unit accommodates three 20-watt MR11 lamps and has a built-in solid-state transformer. Roxter Mfg. Corp., Long Island City, NY.

Circle 64



### ■ Low-voltage pinspot

The 30 Series high-intensity pinspot track lighting fixture from Lighting Services is designed to accommodate all sealed-beam

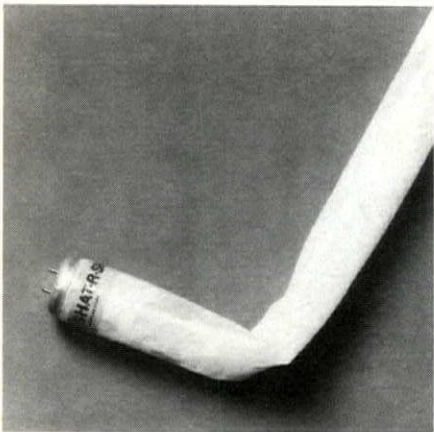




#### ■ Floor lamp

Boyd Lighting's steel and brass Saturn floor lamp provides ambient uplight and diffused downlight from an opal white glass reflector. The luminaire's stem and base come in two finishes with polished chrome or brass accents; a 24-inch-diameter fabric shade is available in two colors. The luminaire accommodates a 200-watt incandescent lamp and has a full-range line dimmer. Boyd Lighting Company, San Francisco, CA.

Circle 67

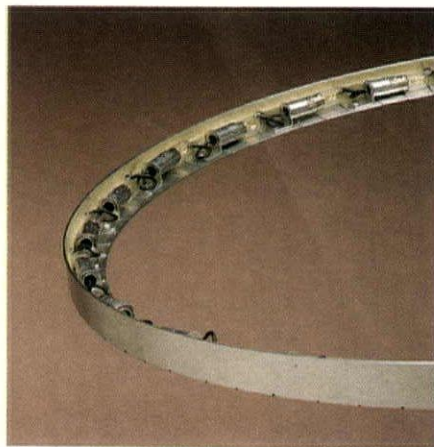


#### ■ Coated fluorescent lamps

Shat-R-Shield's fluorescent lamps have a clear, tough, flexible Surlyn coating that contains virtually all glass shards, phosphors, and mercury if a lamp is broken, eliminating the need for protective sleeves and end caps. The coating prevents

buildup of contaminants, which can reduce light output, and does not insulate the lamp, which can cause heat buildup and premature burnout. The lamps offer a light output of more than 97 percent and a coating that will not yellow over the life of the lamp, according to the manufacturer. Shat-R-Shield, Inc., Salisbury, NC.

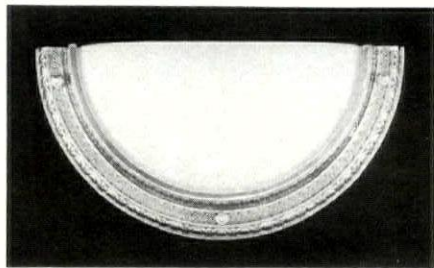
Circle 68



#### ■ Low-voltage light strip

Norbert Belfer's 2711 low-voltage miniature light strips can be flexed and curved into custom lengths and configurations with a radius of as little as 6 inches. Lamp sockets are swivel-mounted for easy positioning and relamping. The miniature light strips are made of heavy-duty aluminum and accommodate incandescent and halogen lamps in a variety of wattages. The 6-, 12-, and 24-volt systems come in a choice of socket spacings. Norbert Belfer Lighting, Ocean, NJ.

Circle 69



#### ■ Brass sconce

The Camelot sconce is part of The Original Cast line of decorative sconces and chandeliers from Art Directions. It is made

of solid cast yellow brass and accommodates two 60-watt incandescent lamps. It measures 17 inches wide, 8 1/2 inches high, and 7 inches deep. Art Directions Inc., St. Louis, MO.

Circle 70



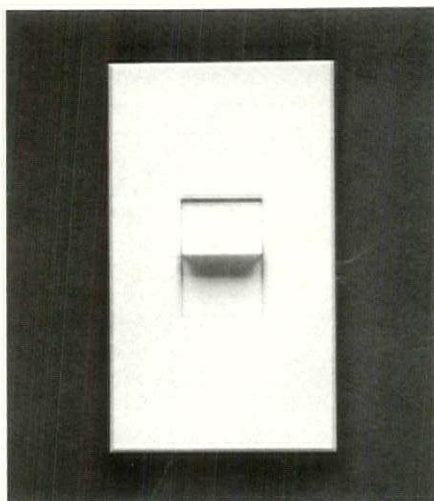
#### ■ Brass lantern

Kichler Lighting offers the K-9765 lantern from its City Lights collection, which is based on designs from a 1913 Alco Berlin touring car. The 34-inch-high lantern is handmade of polished solid brass and has beveled glass panels. It accommodates four 40-watt candelabra lamps. Kichler Lighting, Cleveland, OH.

Circle 71

PAR 46 lamps. It produces a brilliant shaft of light using less power and producing less heat buildup than standard-voltage units; it is suitable for highlighting small objects and accenting details of large objects. Features include an integral stepdown transformer, a full-yoke mounting device, a rotating lamp holder, an integral on-off switch for track and portable units, accessory retaining clips, and an adjustable, self-locking lamp housing. An integral dimmer is optional. Lighting Services Inc., Stony Point, NY.

Circle 65



#### ■ Lighting controls, accessories

Lutron's expanded family of Nova T\* thin-profile, specification-grade lighting controls and accessories control incandescent, fluorescent, and electronic and magnetic low-voltage incandescent light sources. Combined dimming and switching systems, two-location dimming systems, linear slide dimming controls, and three-way dimming controls are available. Shown is the basic Nova T\* linear slide switch. Lutron Electronics, Co., Inc., Coopersburg, PA.

Circle 66

Sweet's Catalog #  
16500/ROB  
Buyline 4899





**roberts step-lite systems**

NEW "S" TYPE COVE LIGHTING

Circle 21

4501 North Western Avenue  
Phone (405) 528-7738 • FAX 1-(405) 528-7763

Oklahoma City, Oklahoma 73118  
TOLL FREE 1-800-654-8268



# STEP ASIDE COMPETITION

## Day-Brite's VDT sets the standard for computer environment low brightness fixtures.

Personal visual comfort and fixture efficiency highlight an impressive list of benefits of the new Day-Brite Designer VDT fixtures, especially designed for video display terminal environments. But, unlike competitive single-shot efforts at low glare fixtures, Day-Brite's VDT series is a family of fixtures, offering all these benefits:

- Virtually glare free in the 60 to 90-degree "offending zone"
- Small cell aesthetic appearance with large cell efficiencies
- Shallow fixture body solves plenum depth problems
- Concealed frame aluminum louvers are permanent, requiring little maintenance
- Choice of fixture body sizes, cell sizes, number of lamps
- AVAILABLE FOR IMMEDIATE SHIPMENT

When your job is to specify lighting for a glare-free environment such as VDT installations, look at Day-Brite's Designer VDT series. Don't settle for less!

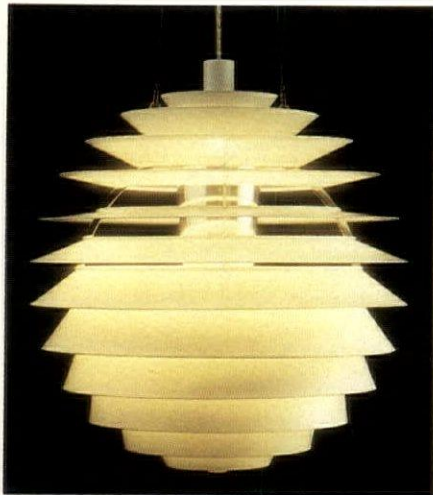
**DAY-BRITE**  
®



DAY-BRITE LIGHTING DIVISION  
Emerson Electric Company

P.O. Drawer 1687 ■ Tupelo, MS 38802 ■ Phone: 601-842-7212 ■ FAX: 601-841-5501

Circle 22



■ **Decorative pendant**

The PH Louvre pendant luminaire from Poulsen Lighting has a series of formed, graduated reflector shades and concealing cones surrounding its light source. Stainless steel aircraft cables suspended from a ceiling canopy support the luminaire. Poulsen Lighting Inc., Miami, FL.

Circle 72

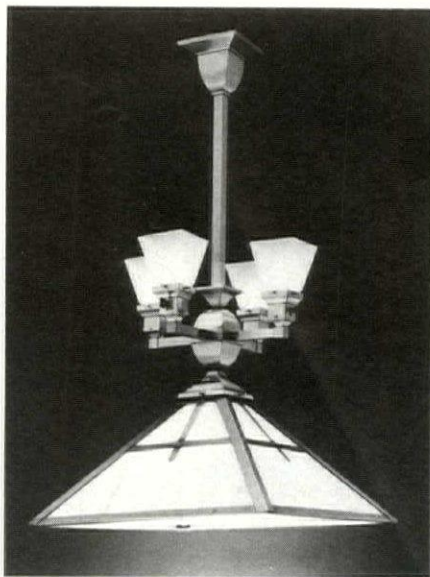


■ **HID area lighting**

Hanover Lantern's Grande Jefferson one-piece HID luminaire has a crooklike arm of heavy-duty aluminum tubing welded to its roof. The cast aluminum unit has a hinged cage with removable panels of clear, UV-stabilized, prismatic polycarbonate. Models for HID and incandescent

lamps are available; refractors and reflector systems are optional. Hanover Lantern, Hanover, PA.

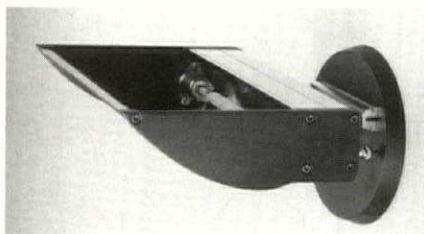
Circle 73



■ **Brass chandelier**

The Prescott solid brass chandelier from Rejuvenation is designed to downlight a dining room table while providing general illumination. The Mission style fixture comes in antique brass, polished unlacquered or lacquered brass, brushed brass, polished copper, japanned copper, and polished nickel finishes. Its art glass lantern shade is available in a choice of colors. Rejuvenation Lamp & Fixture Company, Portland, OR.

Circle 74



■ **Indirect reflector**

The PAL-118-300/500 reflector assembly from Rambusch Lighting is designed for uplighting architectural elements such as coves and niches and for indirect lighting when used in its own housing (not shown). Its extruded ellipsoidal reflector

directs a controlled, wide, asymmetric wash of uplight above the 90-degree glare zone, with its main thrust at 135 degrees. A model for damp locations is available. Rambusch Lighting, New York, NY.

Circle 75



■ **Reading lamp**

The Reading Lamp from the Gemma Collection of handcrafted luminaires is a 50-inch-tall floor lamp with a slender brass and copper stem. It has an 11-inch spun brass base with ring detailing, an 11-inch-diameter Tiffany-style opalescent glass shade, and a brass on-off knob. A durable brass T arm adjusts easily to individual reader comfort levels. Gemma Studios, Northampton, MA.

Circle 76



# A simple approach to lighting automation.

Describe your favorite pocket knife. It's simple. Functional. Flexible. That's why, after 10 years of real-world experience, we're introducing GE Total Lighting Control (TLC).

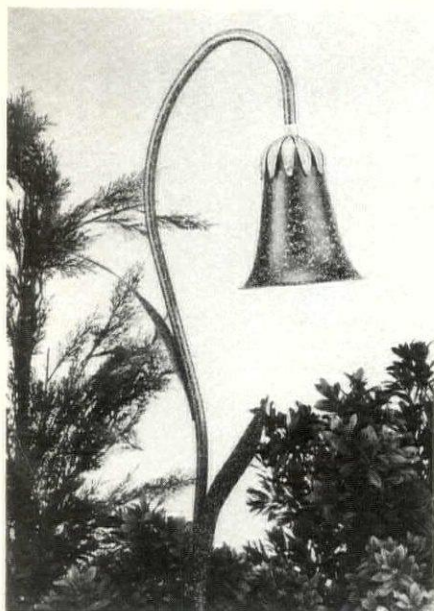
We'll show you how the cutting edge of lighting control technology can simplify the design, installation and operation of your building. And, of course, how to get your free Swiss pocket knife.

Come visit us at Lighting World '89, Booth 1551, circle the reader service number, or call (518) 385-0998.

Now isn't that *simple*?



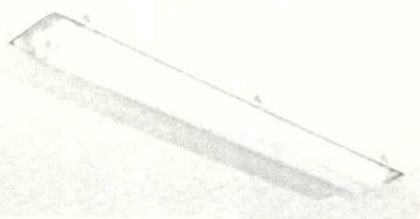
GE Wiring Devices



### ■ Landscape lighting

A garden walkway light from Hinkley Lighting comes with a mottled verde finish and a spun aluminum shade. It is 32 inches high, 6 inches wide, and uses a 60-watt source. Hinkley Lighting, Cleveland, OH.

Circle 77

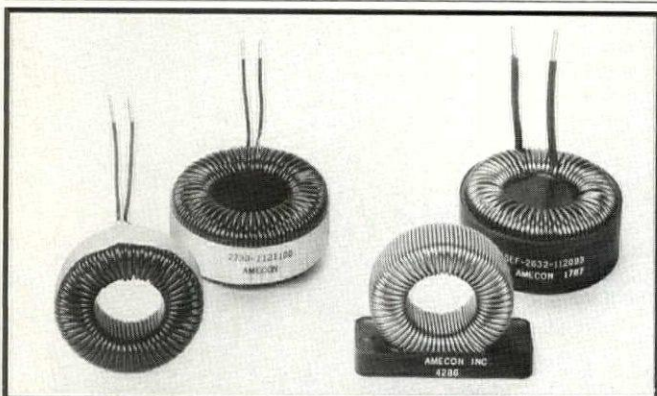


### ■ Industrial fluorescent

The Series 86 industrial fluorescent luminaire from H.E. Williams features a fully

enclosed fiber glass housing and tension clamp latches that hold its acrylic lens in place. Models are available for one or two rapid start, slimline, or high-output fluorescent lamps. Options include a National Sanitation Foundation-listed enclosure and a model UL listed for wet locations. H.E. Williams, Inc., Carthage, MO.

Circle 78



## New Debuzzing Chokes...

- Minimum Noise
- Miniature Size
- Maximum Savings

Amecon's new Series 22 and 27 filter chokes effectively lower noise in dimmers, lamps and fixtures. They're under 2½" and 3" in diameter and are priced under \$4.00 and \$7.00 each respectively in quantity.

These high quality chokes are available from 3 to 30 Amps in a wide range of part numbers ... many from stock.

They offer a full 400 micro-second rise time (ranging from 200 to 600) depending on load and voltage conditions. Manufactured from UL recognized materials, they are available in semi- or full epoxy-molded configurations.

Applications recommended for all types of professional light dimmers: architectural, touring, theatre, low voltage, and nearly anywhere a noise-rejection system is required. Call or write for updated catalog.

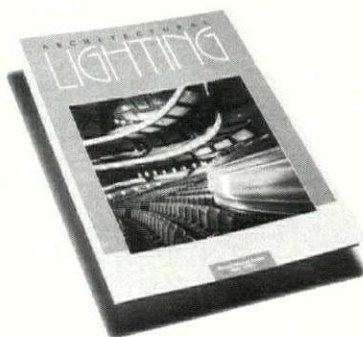
**AMECON** Quality Magnetics & Electronics  
 Amecon, Inc., 1900 Chris Lane, Anaheim, CA 92805  
 TEL: (714) 634-2220, FAX: (714) 634-0905  
 TWX: 510-100-0364

## REPRINT SERVICE

Reprints of all articles published in *Architectural Lighting* are available exclusively through Aster Marketing Services.

Reprints can be used effectively to broaden your exposure, enhance your marketing and educational programs, or promote your product or services.

For further information on volume orders, please contact:



**ASTER**  
 PUBLISHING  
 CORPORATION  
 MARKETING  
 SERVICES

859 Willamette St.  
 P.O. Box 10460  
 Eugene, OR 97440  
 (503) 343-1200

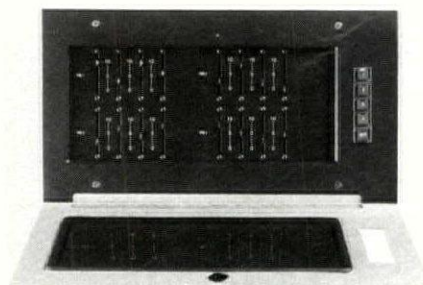


■ **Brass ceiling luminaire**

The Sherman Park ceiling-mounted brass luminaire from Brass Light Gallery is part of the Goldenrod Collection of luminaires

inspired by early 20th-century design movements. It is designed for use in small, tight areas with low ceilings, such as over a kitchen sink. Brass Light Gallery, Milwaukee, WI.

Circle 79

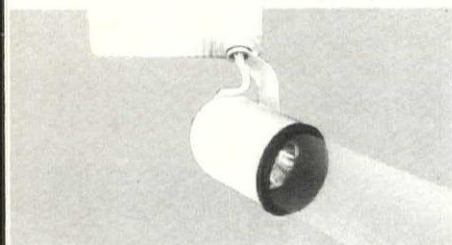


■ **Preset dimming**

The Designer Preset System from Macro

Electronics is simple to operate. A hinged cover with an opaque window conceals the master panel, which controls four preset lighting levels with up to 15 control channels each. Dimming controls are available for a variety of light sources, including HID, neon and cold cathode, fluorescent with standard or dimming ballasts, and standard and low-voltage incandescent. Macro Electronics Corporation, Austin, TX.

Circle 80



## Shed new light...

... with CON-TECH'S 12-volt track lights for superb color rendition and efficiency for home, commercial or institutional, high-accent lighting.

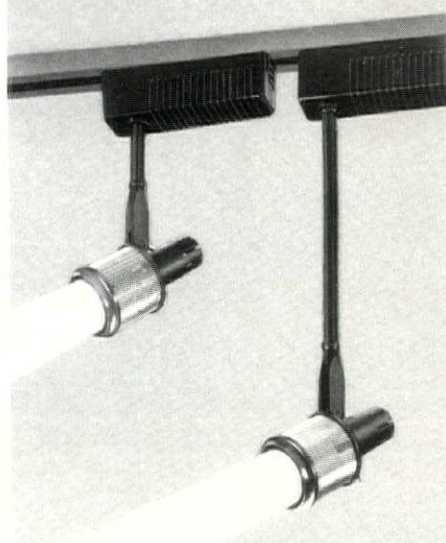
Choose HY-TECH lamp-holders or choose from round or flat back cylinders, Elite step cylinder, sphere or classic bell shapes in white, black or brass finishes. All have designer styling and a deep baffle for extra eye comfort.

One LA-2075 (120 volt to 12 volt) voltage converter fits all lights, so there's less to order and stock.

Just call or FAX your requirements. You'll like the selection ... and the prices!



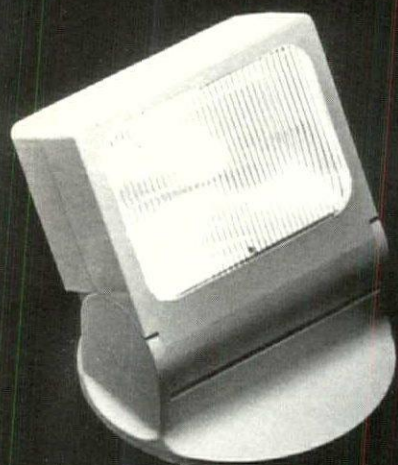
130 N. Waukegan Road  
Deerfield, IL 60015  
Tel: 312/945-0303 FAX: 312/945-0096



NEW 12 V. MICRO/LYTES™  
Using MR-11 Lamps  
Are A Breakthrough  
In Styling & Efficiency!



Call Today For  
Our NEW 12 Page  
Catalog!



ACTUAL SIZE: 4.4"×4.8"×1.9"

# A NEW ANGLE ON EMERGENCY LIGHTING

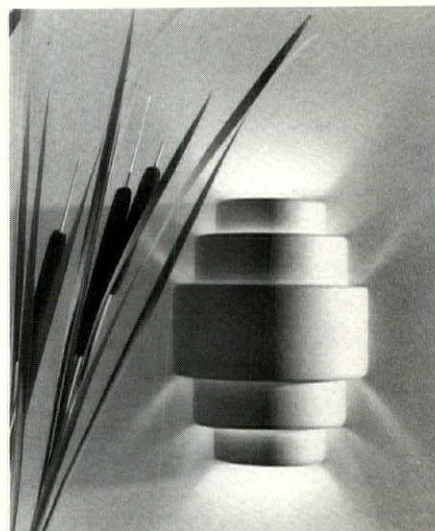
## A1 SERIES

This slim profile lighting unit features a completely automatic solid state charger with long-life pure lead batteries. The A1 mounts to either ceiling or wall and pivots 90° for extended or retracted positioning and is available in white, neutral beige or black.

### YORKLITE

512/385-1773  
FAX 512/389-2841

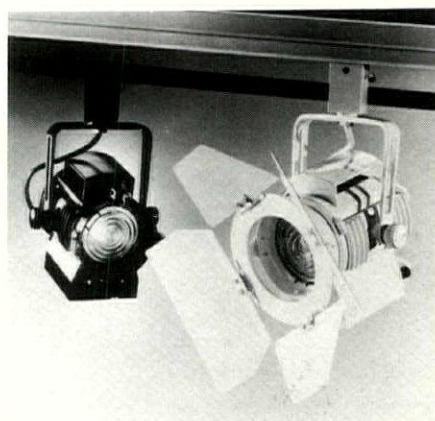
Circle 26



#### ■ Ceramic sconce

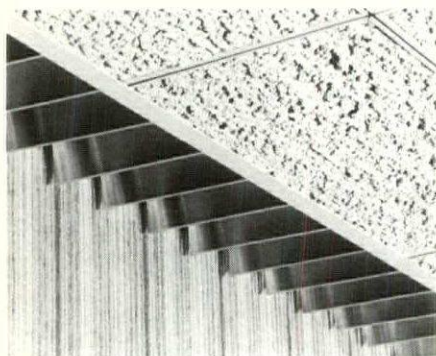
Saxe-Patterson's Ziggurat sconces are made of high fire-reinforced porcelain and have a louvered construction that provides soft indoor or outdoor lighting. The Double Ziggurat pictured here is one of about 20 variations in size and shape. It comes in two sizes and 10 standard matte colors; custom finishes are available. Saxe-Patterson, Taos, NM.

Circle 82



#### ■ Miniature track Fresnels

The LTM Designer Fresnel is a miniature theatrical track fixture with a prismatic lens. Together, the fixture's Fresnel lens, point light source, and focusable, spherical reflector produce a concentrated light output with a smooth, even field and sharp, crisp edges. The fixture uses a 150-watt incandescent lamp and can be mounted in a variety of ways. Accessories include barn



#### ■ Recessed fluorescent systems

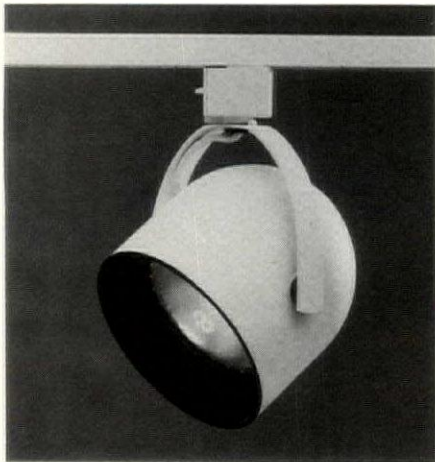
Lithonia Lighting offers the RP recessed perimeter fluorescent lighting system, which provides a continuous line of shadowless illumination around a room. An RL system (not shown) provides continuous linear lighting in a room's interior. Both are available with louvers. Other features include plug-in wiring, overlapping lamps, and field-adjustable telescoping components. Lithonia Lighting, Conyers, GA.

Circle 81



doors, snoots, color frames, and focal lenses. LTM Corporation of America, Sun Valley, CA.

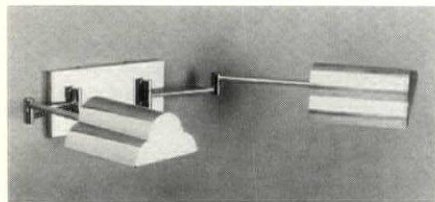
Circle 83



#### ■ PAR 30 track fixture

Lightolier's soft-shaped Ovation 30 track fixture is scaled to accommodate a PAR 30 halogen lamp to produce a crisp, white light. The compact 5-inch-long, 5-inch-wide fixture has a tapered matte black aluminum baffle that reduces aperture glare and hides the inside of the fixture. The PAR 30 lamp comes in two wattages and two beam patterns. Lightolier, Secaucus, NJ.

Circle 84



#### ■ Adjustable brass lamps

A solid brass wall-mount fixture from Execulamp is one of a line of floor, desk, wall, and table lamps suitable for traditional, contemporary, and Art Deco settings. Each handmade shade includes a specular reflective liner to reduce heat and enhance lumen output. The fixture has a 0-100 percent dimming switch. Execulamp, Inc., San Rafael, CA.

Circle 85



#### ■ Custom luminaire

Appleton Lamplighter manufactures custom luminaires to individual specifications. The pendant luminaire shown was designed for the city hall in Tamarac, Florida, by Jim Stahnke of Miller Meier Kenyon and Cooper. The luminaire's gloss white stem and cage assembly support three sandblasted opal acrylic discs bonded to an inner cylinder of sandblasted opal acrylic. The luminaire accommodates a 200-watt incandescent lamp. Appleton Lamplighter, Appleton, WI.

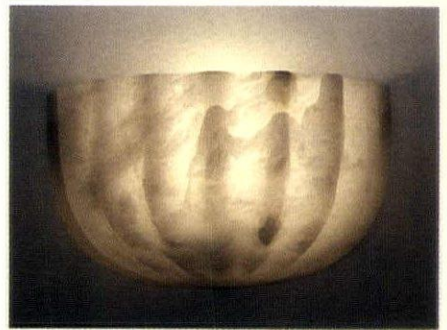
Circle 86



#### ■ Low-voltage display fixture

Microlamp offers a low-voltage MR16 halogen fixture by Thorn EMI that can be used in place of a conventional R40 or PAR 38 lamp. The unit comes complete with a torodial transformer, a standard screw base, and a replaceable MR16 lamp. It is available in 20-, 35-, and 50-watt versions and comes in various beam spreads. U.S. distributor: Microlamp, Inc., Boca Raton, FL.

Circle 87



#### ■ Wall bracket

The Regina wall bracket from Boyd Lighting is made of white Spanish alabaster with a subtly fluted design. The luminaire emits a soft, semi-indirect light from a 75-watt incandescent or 13-watt compact fluorescent lamp. Boyd Lighting Company, San Francisco, CA.

Circle 88



#### ■ Pendant luminaire

Poul Henningsen designed Poulsen Lighting's PH 6<sup>1/2</sup>-6 pendant luminaire, which has four formed, graduated reflector shades and concealing cones that help produce a uniform, symmetrical light distribution pattern. A series of rounded struts support the reflector shades, and a stainless steel aircraft cable suspended from a ceiling canopy supports the glare-free luminaire. Poulsen Lighting Inc., Miami, FL.

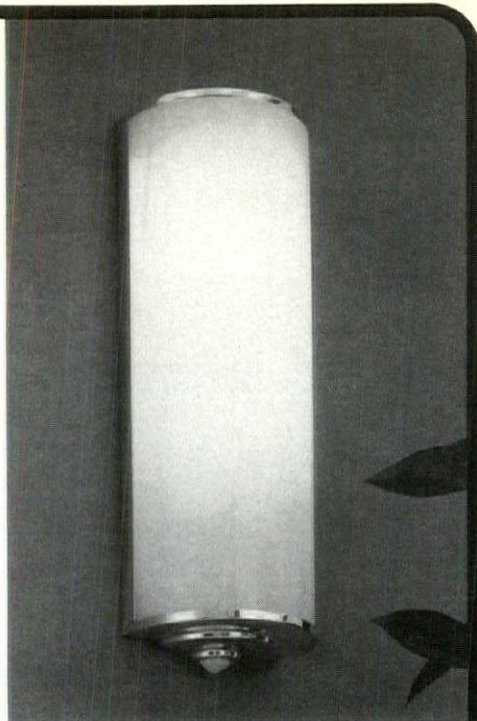
Circle 89

## Appleton Lamplighter.

The first choice of the design community for custom lighting, architectural metal fabrication.

### GUARANTEEING:

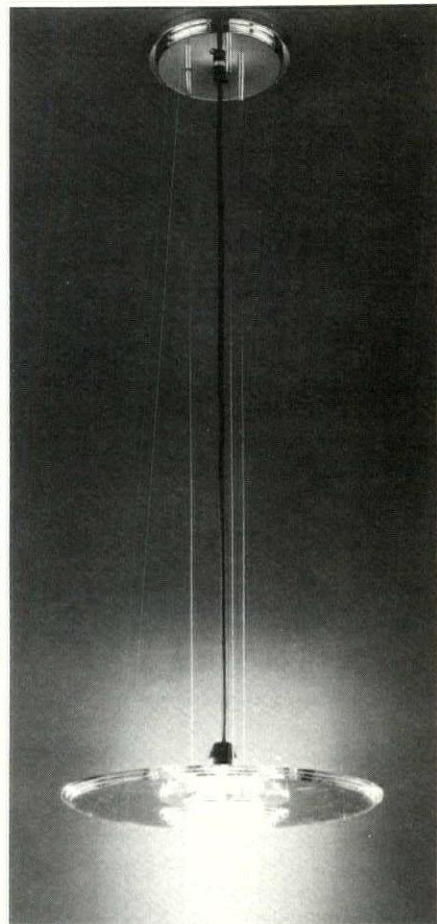
- Integrity of design
- Quality materials and products
- American craftsmanship
- Professional staff
- Engineering
- Delivery
- North American wide representation
- Affordability



12" x 4 1/4" Half Cylinder Sconce  
Polished Solid Brass • Opal Acrylic Lens  
13 watt F13DTT Lamp

PO BOX 1434 • APPLETON, WISCONSIN 54913  
FAX 414 739-1656 • PHONE 414 739-9001

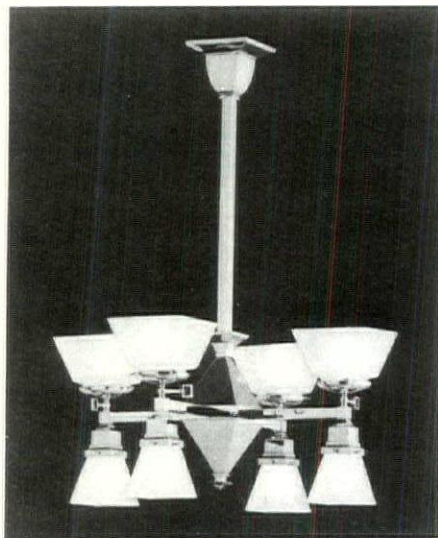
Circle 27



### ■ Decorative glass pendant

The design of Lightolier's Scalini art glass pendant, inspired by the Scalini steps in Rome, features stepped layers of clear glass with smooth, polished edges. The 20-inch-diameter pendant accepts a 150-watt halogen lamp. Lightolier, Secaucus, NJ.

Circle 92



### ■ Brass chandelier

The Golden Gate eight-lamp chandelier comes from Brass Light Gallery's Goldenrod Collection of luminaires inspired by early 20th-century design movements. The chandelier has sandblasted glass shades and comes in various finishes. Brass Light Gallery, Milwaukee, WI.

Circle 90



### ■ Light poles

Emco offers a wide variety of poles ranging in height from 8 to 60 feet. Models come in round, square, tapered, straight, and decorative styles that can be outfitted with mounting arms, brackets, and anchor bolts. The poles are made from a variety of materials, including aluminum, steel, wood, and fiber glass. Emco Environmental Lighting, Milan, IL.

Circle 91

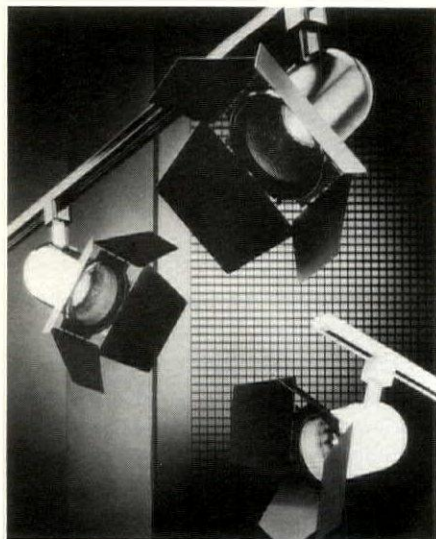


### ■ Exit sign

The BetaLux-E self-luminous exit sign

from SRB Technologies requires no electrical energy source. Inside its housing are borosilicate glass tubes internally coated with a phosphor and filled with tritium gas. The face comes in three colors, the case in two. A universal mounting bracket allows for flush ceiling, surface, or side mounting. SRB Technologies, Winston-Salem, NC.

Circle 93



■ **Compact track fixture**

Halo Lighting's compact Power-Track lamp holder for a PAR 20 halogen lamp delivers high output and superior optical control to residential and commercial applications. The PAR 20 lamp comes in two narrow beam patterns. The compact lamp holder can be used with single- and double-circuit systems; its matte black baffle provides visual comfort and enhances the fixture's appearance. It is available in three finishes and accepts a variety of R lamps. Halo Lighting, Elk Grove Village, IL.

Circle 94

**Prudential Presents**

The new Wall Sconce Series S-22. Three bold shapes available in many standard or custom finishes and a wide spectrum of colors. Semi-indirect or totally indirect light extends the architectural lines of the sconces into the space itself. Free color brochure available.

PRUDENTIAL LIGHTING  
1774 EAST 21st STREET  
LOS ANGELES, CALIFORNIA 90058  
TELEPHONE (213) 746-0360 FAX (213) 746-8838

Circle 28

# BRIGHT CONTROLS



Paragon lighting controls are the brightest solution for all lighting requirements. They reduce energy costs without reducing productivity or security.

Paragon controls are available with 24-hour, 7-day and 365-day programming, 1 to 32 outputs, DIN or NEMA enclosures and a variety of voltages, for every application and installation. Controls that automatically respond to seasonal light changes and controls that monitor light levels are also available.

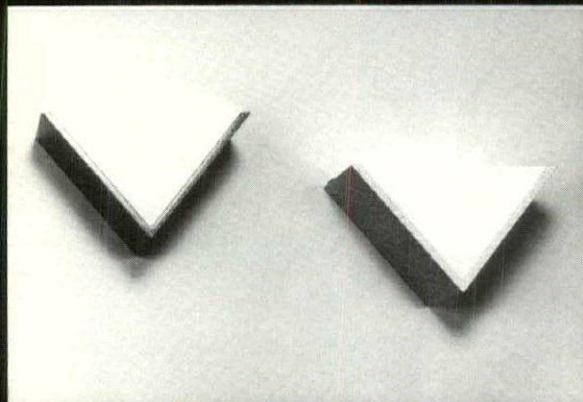
When you're installing lighting controls, choose the brightest. Talk to your Paragon distributor or contact Paragon Electric Company today.

**PARAGON ELECTRIC COMPANY, INC.**  
606 Parkway Blvd., P.O. Box 28, Two Rivers, WI 54241  
414-793-1161 Fax 414-793-3736 Telex 26-3450

Circle 29

## TRIBBLE

Incandescent wall sconce  
fashioned from Solid Corian®  
U.L. listed



see us at lighting world, booth #1609

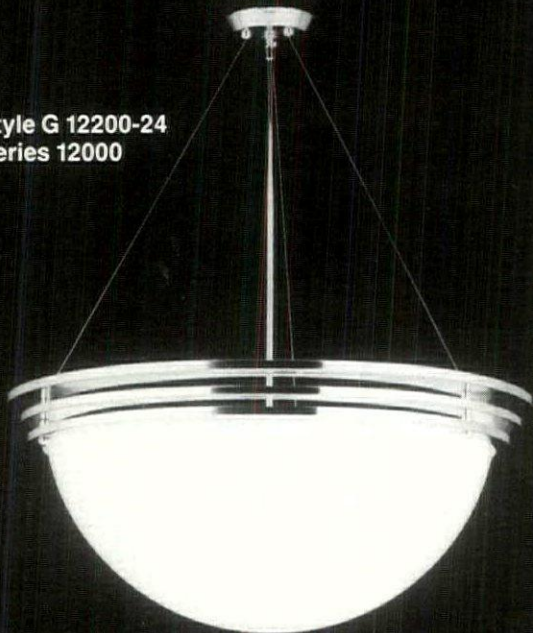


For more information, call or write Aamsco at:  
P.O. Box 15119, Jersey City, N.J. 07305 (201) 434-0722 Fax: (201) 434-8535

Circle 30

**GROSS  
CLAUDEGER  
COMPANY**  
Since 1908

Style G 12200-24  
Series 12000



**Custom Designers and Manufacturers of  
Fine Decorative Lighting**

106 Gratiot St. • St. Louis, MO 63102  
(314) 231-1060 • 1-800-331-2425 • FAX (314) 231-2265

Circle 31

## Product Literature



### Low-voltage lighting

A color brochure features low-voltage halogen downlights and track- and canopy-mounted accent fixtures from Reggiani s.p.a. Illuminazioni. Lamp requirements, dimensions, finishes, and accessories are included. U.S. distributor: Lighttron of Cornwall, Inc., New Windsor, NY.

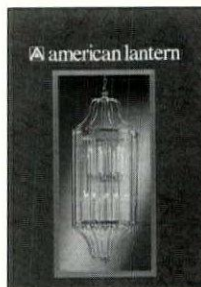
Circle 120



### Recessed downlights

Polyquad series recessed downlights from Staff Lighting have a special optical system designed to eliminate the rainbow effect of compact fluorescent downlights. A brochure describes advantages and illustrates available models. Staff Lighting Corp., Highland, NY.

Circle 121



### Indoor, outdoor collection

A 52-page color catalog from American Lantern illustrates a wide variety of decorative indoor and outdoor luminaires. Dimensions, finishes, and lamp requirements for all models are noted. American Lantern Company, Newport, AR.

Circle 122



### Emergency lighting

York-Lite's A1 series self-contained emergency lighting unit mounts on ceilings or walls and pivots 90 degrees. A data sheet describes features, including a fully automatic battery charger. York-Lite Electronics, Inc., Austin, TX.

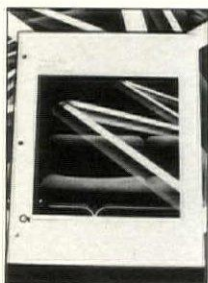
Circle 123



### Outdoor lighting series

Wall- and post-mounted outdoor luminaires in Dinico's contemporary Tech 1 series accommodate incandescent and compact fluorescent sources. A color brochure illustrates two styles, two finishes, and various post heights. Dinico Products, Inc., Hackensack, NJ.

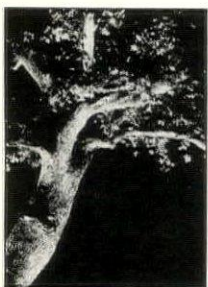
Circle 124



### ■ Fluorescent luminaires

Focus One fluorescent luminaires have glare-free lenses designed to eliminate hot spots. A brochure features direct, indirect, bidirectional, and rotatable models in a variety of shapes, sizes, colors, and mountings. Gardco Lighting, San Leandro, CA.

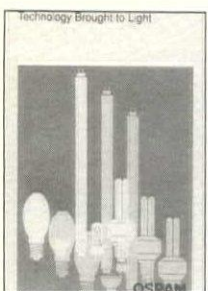
Circle 125



### ■ Landscape fixtures

A 24-page catalog from B-K Lighting shows low-voltage outdoor fixtures of machined aluminum alloy, brass, steel, iron, and cast aluminum, with anodized and powder coat finishes. B-K Lighting, Inc., Fresno, CA.

Circle 126



### ■ Lamps

A catalog contains descriptions and photos of a variety of Osram's lamps and accessories, including standard and electronic compact fluorescent, T8 fluorescent, low- and line-voltage halogen, HPS, and low- and high-wattage metal halide sources. Osram Corporation, Newburgh, NY.

Circle 127



### ■ Compact fluorescent lamps

A brochure describes features and benefits of GE's Biax high-lumen compact fluorescent lamps, which have a color rendering index of 82 and come in four sizes, three wattages, and three color temperatures. GE Lighting, Cleveland, OH.


Circle 128



### ■ Color and light


Three bulletins from GTE's U.S. Lighting Division explain the relationship between color and light. Subjects include the fundamentals of light and the color temperature and rendering from different sources. GTE/Sylvania, Danvers, MA. ■

Circle 129

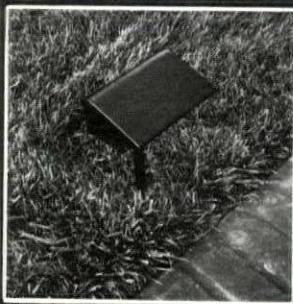


# WENDELIGHTING

WENDELIGHTING/DIVISION OF JACKSEN INTERNATIONAL LTD.



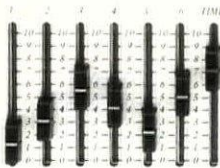
**MODEL 6100  
WALK REFLECTORS**  
Anodized heavy aluminum casting for corrosion resistance with lens. Our glare free walk and plant reflector is available in 120 volt/40 watt incandescent Underwriters Laboratory approved. Ask for 70 watt, M.H.




2445 N. NAOMI ST.,  
BURBANK, CA 91504  
(818) 955-8066  
FAX 818 848-0674  
N.Y. (212) 682-8775  
NATIONAL 1-800 528-0101

Circle 32

*Accent*





Strand Electro Controls

## *Put the Accent Where You Want It!*

Is your accent on flexible, fully programmable dimming control? Is your accent on a wide range of creative lighting control features normally found on large systems? Is your accent on price?

Whatever your accent . . . Accent is the answer! Call Strand Electro Controls today for a demonstration.

#### **Features:**

- ◀ Slider and preset control
- ◀ 12 presets with up to 12 channels
- ◀ Full memory back-up and record lockout
- ◀ Sliders record presets directly to pushbuttons
- ◀ Raise/lower button masters, presets and sliders
- ◀ Fade time adjustment 0 to 4 mins.
- ◀ Remote 4 or 8 preset stations
- ◀ Multiple finishes available



2975 S. 300 W., Salt Lake City, Utah 84115  
Tel: 801-487-6111

Facilities in Toronto, New Jersey, Hong Kong, Los Angeles, London, West Germany, Paris, Rome, and Australia.

Circle 33

# Classified Directory

## ACCENT AND DISPLAY LIGHTING (INTERIOR)

- AMERLUX**, 23 Daniel Rd., Fairfield, NJ 07006 201/882-5010  
**CUSTOM NEON Mfg.**, install interior neon portable & wall-mount art & signs. 213/937-6366  
**DANALITE**, 16392 Gothard St. #A, Huntington Beach, CA 92647 FAX 714/848-1669 714/841-4325  
 Low voltage / slim profile linear lighting system / high intensity halogen lamps / extensive apps  
**FIBERSTARS**, 47456 Fremont Blvd., Fremont, CA 94538 800/327-7877  
**MIROFLECTOR CO.**, 40 Bayview Ave., Inwood, Long Island, NY 11696 516/371-1111  
 Full line of recessed accent lights, down lights & wall washers. Architectural cylinders for HQL incandescent compact quad fluorescents and HID lamp sources.  
**NATIONAL SPECIALTY LIGHTING** (see ad this section)  
**NL CORP.**, 14901 Broadway, Cleveland, OH 44137 FAX 216/662-9069 or 216/662-2080  
 Recessed HID and incandescent; decorative; custom; church; 20, 30, & 60 amp track; fluorescent lighting systems. Call for more information.  
**E.G. SCHLESSELMAN, INC.**, 2778 Banning Rd., Cincinnati, OH 45239 FAX 513/923-1654 513/923-1144  
 Designer & Manufacturer of Special & Standard Lighting Fixtures for the Display Industry

### National Specialty Lighting

"Non-Neon" Flexible, Unbreakable, 25% The Cost Of Neon

- \*Rope Lighting
- \*Exterior Lights
- \*Tube Lighting
- \*Strip Lites

Call Today For Free Catalog!

1-800-527-2923 (US) 1-800-442-3766 (TX)

## ACCESSORIES AND COMPONENTS

- AMERICAN LOUVER CO.**, Skokie, IL, Louvers and Lenses 800/323-4250 or 312/470-3300  
**LEXALITE INT. CORP.**, P.O. Box 498, Charlevoix, MI 49720 FAX 616/547-5833 or 616/547-6584  
 Custom and Proprietary Injection Molded Lighting Products. (For information call Cheryl Barron.)  
**MAXIMUM TECHNOLOGY**, 60 Industrial Way, Brisbane, CA 94005 415/468-2560

## AMBIENT LIGHTING SYSTEMS (INTERIOR)

- DAY-BRITE/McPHILBEN/OMEGA**—Complete fixture needs. Fax 601/841-5501 or Call 601/842-7212  
**H.E. WILLIAMS INC.**, P.O. Box 837, Carthage, MO 64836 417/358-4034  
**LITHONIA LIGHTING**. We cover the lighting spectrum 404/922-9000  
**NORBERT BELFER LIGHTING MFG.**, Cove & Linear Lighting Products 201/493-2666  
**PEERLESS LIGHTING CORP.**, P.O. Box 2556, Berkeley, CA 94702 415/845-2760

## AREA LIGHTING (EXTERIOR)

- ADJUSTA-POST MFG. CO.**, P.O. Box 71, Norton, Ohio 44203 FAX 216/745-9746 800/321-2132  
 Residential & commercial outdoor fixtures. Sids. & Acces. HID, fluorescent, low volt. & incandescent.  
**AMERICAN ELECTRIC**, 1555 Lynnfield Rd., Memphis, TN 38119 901/682-7766  
 HID luminaires for area, facade, roadway, sports, and industrial lighting applications.  
**BIEBER LIGHTING CORPORATION** (See ad this section)



### BIEBER LIGHTING CORPORATION

One of America's leading manufacturers. Offering a complete product line of commercial and residential luminaires and accessories for a wide variety of applications: automobile dealerships, shopping centers, sports facilities, industrial, landscape lighting, and extensive custom capabilities. U.L. listed, HID, and fluorescent. Call for local representative.

970 W. Manchester Blvd., Inglewood, CA 90301  
**FAX 213/776-0235 PH. 213/776-4744**

- C.P.I. CONCRETE PRODUCTS**, P.O. Box 13324, Memphis, TN 38113 FAX 901/775-9863 or 901/775-9880  
 Concrete light poles & bollards. Fourteen decorative colors & exposed aggregate finishes such as dark bronze, black, & granite to match any setting. Square tapered design up to 65 ft.  
**ELA CO.**, 17891 Arenth Ave., City of Industry, CA 91748 818/965-0821 FAX 818/965-9494  
 Mfgs. of decorative outdoor fixtures, poles and arms for the commercial and residential mkts. Custom designing and mfg. of decorative interior/exterior fixtures  
**EMCO ENVIRONMENTAL LIGHTING**, 7300 50th St., P.O. Box 1640, Milan, IL 61264 309/799-3111  
**HOLOPHANE**, 214 Oakwood Ave., Newark, OH 43055 614/345-9631  
**PEMCO CORP.**, Philadelphia, PA, Exterior HID & Custom Lighting & Poles 215/236-9020  
**RUUD LIGHTING**, 9201 Washington Ave., Racine, WI 53406 800/558-7883  
**RWL CORP.**, 240 Sargent Dr., New Haven, CT 06511 203/789-1710  
**SPRING CITY ELECTRICAL MFG. CO.**, Spring City, PA 19475 call 215/948-4000 or FAX 215/948-5577  
 Historically authentic, cast iron ornamental lighting posts, bollards and adaptations.

- STONCO**, 2345 Vauxhall Rd., Union, NJ 07083. Contact Phil Henry at 201/964-7000  
 Outdoor lighting, fixtures and accessories for industrial, commercial and residential markets.  
**UNION METAL CORP.**, 1022 9th St. SW, Canton, OH 44707 216/456-7653  
 Steel, aluminum and concrete poles for area, roadway and sports lighting. Hi-mast raise-lower systems. Ornamental nostalgia lighting poles and luminaires  
**W.F. HARRIS LIGHTING**, 4015 Airport Ext. Rd., Monroe, NC 28110 704/283-7477  
 Indoor/outdoor decorative & vandal-resistant rustproof lighting for wall, ceiling, post & landscape applications. U.L. listed H.I.D., FL, INC & emergency fixtures.

## CONTROLS

- LEE COLORTRAN, Inc.**, 1015 Chestnut St., Burbank, CA 91506 FAX 818/954-8520 or 818/843-1200  
 VIEWPOINT, a field-configurable system of off-the-shelf Architectural Dimming and Control Components from Lee Environmental Lighting—a division of Lee Colortran, Inc.  
**LUTRON ELECTRONICS**, 205 Sutter Rd., Coopersburg, PA 18036 215/282-3800  
**STRAND ELECTRO CONTROLS**, 2975 S. 300 W. Salt Lake City, UT 84115 801/487-6111  
 Manufacturing full line of lighting controls and dimmers for Restaurants, Hotels, Board Rooms, etc.  
**VARA-LIGHT/DIMATRONICS/HUB ELECTRIC**, Crystal Lake, IL FAX 815/455-1499 or 815/455-4400

## DAYLIGHTING PRODUCTS

- MULTIPOINT CONTROL SYSTEMS**, 3101 111th St. SW #A, Everett, WA 98204 206/347-3499  
 Full line of adjustable photocell lighting control sensors & systems for indoor/outdoor applications.

## DECORATIVE LUMINAIRES (INTERIOR)

- BRASS REPRODUCTIONS**, 9711 Canoga Ave., Chatsworth, CA 91311. Decorative Fixtures. 800/828-5858  
**LIGHTSPACE DESIGN**, 2111 Vine, Suite B, Berkeley, CA 94709. Consultant & MFG. 415/540-6023

## DESIGN SOFTWARE & TESTING/MEASURING INSTRUMENTS

- INTERNATIONAL LIGHT**, Dexter Industrial Green, Newburyport, MA 01950 617/465-5923  
 Radiometers, photometers, spectroradiometers, laser power meters for radiometry, photometry, UV curing, UVA/B phototherapy, germicidal radiometry & UV hazard use.

## DISTRIBUTOR

- MICHAEL MARTZ** (Architect Designer Buying Services) FAX 201/944-3004 or call 201/944-4098

## LAMPS

- GENERAL ELECTRIC**, Ad Response Dept., Nela Park #4151, Cleveland, OH 44112 216/266-3200  
**GTE/SYLVANIA LIGHTING**, Sylvania Lighting Center, Danvers, MA 01923 617/777-1900  
**OSRAM CORP.**, 110 Bracken Rd., Montgomery, NY 12549 914/451-4040  
**PHILIPS LIGHTING CO.**, 200 Franklin Square Dr., Somerset, NJ 08875 800/631-1259 800/752-2852  
**USHIO AMERICA**, 20101 S. Vermont Ave., Torrance, CA 90502 FAX 213/329-3641 or 213/329-1960  
 Manufacturer of MR11, MR16, T3 Quartz, Minican and DC Bayonet Halogen Lamps.  
**VENTURE LIGHTING INTL.**, 625 Golden Oak Pkwy., Cleveland, OH 44146 800/437-0111  
 Metal Halide, High and Low Pressure Sodium, Mercury, MR-16 and MR-11 Display Lamps. Many new and unique products not available from other manufacturers.

## LANDSCAPE LIGHTING

- ABEC LIGHTING**, 4084 Arnold Ave., #8, Naples, FL 33942 813/643-4242 or 813/643-3305  
 Quality outdoor landscape & security lighting. PVC construction. Fluorescent/low voltage available—all styles. Custom color & design. Commercial, residential, marine.  
**DINICO PRODUCTS, INC.**, 123 So. Newman St., Hackensack, NJ 07601 201/488-5700  
**ELECTRO-ELF**, 10011 Olive St., Temple City, CA 91780 818/286-5002 Fax 818/579-1333  
 Energy Efficient Fluorescent lighting. Sealed Waterproof Fixtures available in many styles and colors.  
**HADCO**, P.O. Box 128, 100 Craftway, Littlestown, PA 17340 717/359-7131  
**IDAHO WOOD**, Sandpoint, ID, Landscape Lighting (Wood) 800/635-1100 or 208/263-9521  
**NIGHTSCAPING**, 1705 E. Colton Ave., Redlands, CA 92373 714/974-2121

## LIGHTING DESIGNERS AND CONSULTANTS

- DESIGN LIGHTING CONSULTANTS, INC.**, 7166 S.W. 47TH ST., MIAMI, FL 33155 305/665-6100  
**FREDRICK RAMOND INC.**, 16121 S. Carmenita Rd., Cerritos, CA 90701 FAX 926-1015 213/926-1361  
**LIGHTSPACE DESIGN**, 2111 Vine, Suite B, Berkeley, CA 94709. Consultant & MFG 415/540-6023

## LIGHTING POLES (WOODEN)

- J.H. BAXTER & COMPANY**, P.O. Box 10797, Eugene, Oregon 97440 503/689-3020  
 Manufacturer of Timberwood Lighting Standards. A superior pressure-treated Douglas fir laminate for

# Calendar

decorative outdoor lighting support. Contact Richard Baxter:  
WOODFORM, INC., Portland, OR 97220-1230 800/624-5091

## OEM MANUFACTURERS

EDWIN GAYNOR CO., 200 Charles St., Stratford, CT 06497 203/378-5545 or FAX 203/381-9019  
For more information about fluorescent wiring devices, switches and lamp holders, call and ask for Jill Sapak.

## OTHER LIGHTING SYSTEMS AND LUMINAIRES

KOR-LITE Fluorescent Emergency Lighting Systems Phone: 408/727-0314 FAX 408/492-1403  
LIGHTING TECHNOLOGIES INC., 2540 Frontier, Suite 107, Boulder, CO 80301 303/449-5791  
Complete luminaire design and lighting system analysis software and consulting service.

## REFLECTOR MATERIALS

ALCOA, Sheet & Plate Division, P.O. Box 8025, Bettendorf, IA 52722 319/344-3007  
ALUMINUM COIL ANODIZING CORP., 501 E. Lake St., Streamwood, IL 60107 800/289-2645  
Pre-anodized lighting sheet: specular, semi-specular, low iridescent, hammertone, diffuse, Everbrite.

## SPACE FRAMES/TRUSSING

MERO CORPORATION, 5 West Cross St., Hawthorne, NY 10532 FAX 914/747-3183 914/747-3180  
Manufacturer of MEROFORM, Spacetrace, MEROTRUSSE AND MERODOME Modular Systems.

## CAREER OPPORTUNITIES

### COMMERCIAL ENGINEERS NYC, LA, CHICAGO, ATLANTA, DALLAS

OSRAM Corporation, the world's third largest lighting manufacturer, and a division of Siemens Corporation, is experiencing exceptional growth. We are looking for Commercial Engineers to provide our sales and marketing staff with technical support. Reporting to the Commercial Engineering Manager, these positions will entail working closely with architects, specifiers, designers, and OEM's, answering technical questions and solving field application problems.

Qualified candidates will possess a technical degree, preferably in electrical engineering. You must also have relevant experience within the lighting industry, coupled with excellent communications skills. This position involves approximately 50% travel.

We offer a competitive salary and an outstanding benefits package. Send your resume with salary requirements to Susan Glassey, OSRAM Corporation, 110 Bracken Road, Montgomery, NY 12549. An Equal Opportunity Employer M/F.

TECHNOLOGY BROUGHT TO LIGHT

**OSRAM**

#### LIGHTING DESIGN DIRECTOR

LSI Lighting Systems Inc., a strong growth company that designs and manufactures outdoor lighting systems and illuminated graphics products, has an immediate opening for the position of Lighting Design Director. Reporting directly to the Executive Vice President, responsibilities will include concept lighting design for all divisions and subsidiaries. The applicant must have a degree in design, with successful experience in the lighting industry.

LSI offers a professional and creative work environment, an attractive salary and a fully paid benefits package (which includes a generous employee stock option plan). This is a growth position for a motivated individual.

Submit resume and salary requirements in confidence to:  
LSI Lighting Systems Inc.  
P.O. Box 42593 - Cincinnati, Ohio 45242-0593  
Attn: Personnel Department  
No phone calls, please. • E.O.E.



#### REGIONAL SALES MANAGER LIGHTING EQUIPMENT

We are a young, growing and aggressive manufacturer of Trac and recessed lighting seeking a Regional Sales Manager for the Northeast. Based in Philadelphia, the successful candidate will possess a minimum of five years sales experience preferably in the electrical business.

Responsibilities include directing and managing a sales force of independent commercial and showroom representatives plus a Philadelphia factory sales force. Strong, proven sales and sales management record a must.

For immediate consideration, send resume and salary history to: **Mr. Glenn Bordfeld, Juno Lighting, 2001 S. Mt. Prospect Road, P.O. Box 5065, Des Plaines, IL 60017-5065.**

The Classified Directory is a monthly feature of *Architectural Lighting*, offering readers easy access to lighting products and services for commercial, industrial, and institutional applications. Listings in this reference section are sold on an annual basis. For full information and closing dates, contact Gordon Exe, (800) 822-6678 or (503) 343-1200.

**April 1-May 14, 1989** **DC<sup>2</sup> exhibit**, Saint Louis Design Center, St. Louis. Winners of invitational lighting fixture design competition. Contact: Saint Louis Design Center, 917 Locust, St. Louis, MO 63101, (314) 621-6446.

**April 17-19, 1989** **Lighting conference for architectural consultants**, Philips Lighting Center, Somerset, NJ. Contact: Sherry Bachman, Lighting Center Coordinator, Philips Lighting Company, 200 Franklin Square Dr., Somerset, NJ 08875-6800, (201) 563-3600.

**April 28, 1989** **Entry deadline**, William J. Locklin Scholarship for students of landscape architecture and lighting design. Sponsor: Loran, Inc. Contact: Landscape Architecture Foundation, 4401 Connecticut Ave., NW, 5th Floor, Washington, DC 20008.

**May 10-12, 1989** **Design ADAC '89** interior design conference and exhibition, Atlanta Decorative Arts Center. Contact: Kate Nerone, Atlanta Market Center, 240 Peachtree St., NW, Suite 2200, Atlanta, GA 30303, (404) 658-5674.

**May 13-16, 1989** **94th NADI visual merchandising, store planning, and design market**, Javits Convention Center, New York City. Contact: Patricia Vitsky Simone, National Association of Display Industries, 470-S Park Ave. So., New York, NY 10016, (212) 213-2662.

**May 15-17, 1989** **Lighting basics**, course, ITL, Boulder, CO. Contact: Sandra Carpenter, Independent Testing Laboratories, Inc., 3386 Longhorn Rd., Boulder, CO 80302, (303) 442-1255.

**May 15-18, 1989** **Comprehensive lighting design**, course, University of Wisconsin, Madison. Contact: E.K. Greenwald, Engineering Professional Development, University of Wisconsin-Madison, 432 N. Lake St., Madison, WI 53706, (608) 262-0573.

**May 15-19, 1989** **Industrial-commercial lighting design workshop**, Philips Lighting Center, Somerset, NJ. Contact: Sherry Bachman, Lighting Center Coordinator, Philips Lighting Company, 200 Franklin Square Dr., Somerset, NJ 08875-6800, (201) 563-3600. ■

# In This Issue

## Manufacturers

**Page 16.** *Projected graphics make cafeteria entry a kinetic experience* (The Energizer, Houston, Texas).  
**Guiberteau & Associates:** Neon.  
**Omega:** Downlights.  
**Ron Rezek:** Sconces.  
**Strand Century:** Framing projectors.

**Page 18.** *Hidden incandescents simulate sunlight in windowless museum* (The Great Hall, Higgins Armory Museum, Worcester, Massachusetts).  
**Altman:** Framing projectors.  
**Lighting Services:** Port, chandelier, and sconce fixtures.  
**Osram:** Sconce fixtures.  
**Dave Rennie Electric:** Sconce renovation.  
**Dennis Sparling:** Custom chandeliers.  
**Sky-scan, Inc.:** Custom control system.

**Page 22.** *Huge building prototype for large-scale daylighting design* (Pacific Bell San Ramon Administrative Center, San Ramon, California).  
**Columbia:** Two-lamp, 1-by-4 fluorescent fixtures with deep-cell parabolic louvers.  
**GE:** Daylighting controls.  
**Levelor:** Miniblinds.  
**Libbey-Owens-Ford:** Glazing.  
**Trident Industries:** Curtain wall.

**Page 32.** *Seattle market shows super market lighting to shoppers* (Larry's Market, Seattle, Washington).  
**Abolite:** Incandescent industrial reflectors.  
**Lithonia:** Metal halide fixtures.

**Page 36.** *Distinctive library luminaires reiterate circular design motifs* (Benjamin S. Rosenthal Library, Flushing, New York).  
**National:** Parabolic troffers, pendant-mounted linear fluorescent luminaires.

**National Cathode:** Cold cathode.  
**Neo-Ray:** Custom luminaires.  
**Voigt Lighting:** Custom circular pendant, recessed luminaires.

**Page 42.** *Lighting Graphics: More about under-cabinet task lighting.*  
**Alkco:** Individual workstation unit.  
**Norbert Belfer:** Compact fluorescent modules.  
**Lightolier:** Linear fluorescent unit.  
**Spaulding Lighting:** Tandem-wired twin units.  
**SPI Lighting:** Tandem-wired twin units.

*Manufacturer credits reflect the products specified for the projects; it is possible that other products were installed during construction or maintenance.*

## Photographers

**Peter Goodman,** 10 West 15th Street, New York, NY 10011, (212) 675-1416  
**J.F. Housel,** 84 University Street #409, Seattle, WA 98101, (206) 682-6181

**Jane Lidz,** 433 Baden Hill, San Francisco, CA 94131-2831, (415) 587-3377  
**Nick Merrick,** Hedrich-Blessing, 11 West Illinois Street, Chicago, IL 60610, (312) 321-1151.

**Cervin Robinson,** 251 West 92nd Street, New York, NY 10025, (212) 873-0464  
**Ron Starr,** 108 Locust Street #6, Santa Cruz, CA 95061, (408) 426-6634

## Advertisers

Aamsco Manufacturing Inc. . . . .	58	Day-Brite Lighting Division, Emerson Electric . . . . .	49	Norbert Belfer Lighting . . . . .	19
ALCOA . . . . .	63	Gardco Lighting . . . . .	3	Paragon Electric Company . . . . .	57
Amecon, Inc. . . . .	52	GE Lighting . . . . .	20-21	Philips Lighting Company . . . . .	14-15
Appleton Lamplighter . . . . .	56	GE Wiring Division . . . . .	51	Poulsen Lighting Inc. . . . .	13
Architectural Area Lighting . . . . .	12	Gross Chandelier Company . . . . .	58	Prudential Lighting . . . . .	57
Aster Marketing Services . . . . .	52	GTE/Sylvania Lighting . . . . .	40-41	Roberts Step-Lite Systems . . . . .	47
Capri Lighting . . . . .	39	Holophane/Division of Manville Corporation . . . . .	43	Ruud Lighting, Inc. . . . .	17
Conservation Technology . . . . .	53	Lighting Services Inc. . . . .	4	Strand Electro Controls . . . . .	59
		Lightolier Inc. . . . .	7,9	Sylvan Designs . . . . .	8
		Lithonia Lighting . . . . .	64	Valmont . . . . .	6
		Lucifer Lighting Company . . . . .	8	Venture Lighting International . . . . .	2
		Nightscaping/ Division of Loran Inc. . . . .	11	WendeLighting . . . . .	59
				Wide-Lite . . . . .	5
				York-Lite Electronics, Inc. . . . .	54
				Zumtobel Lighting, Inc. . . . .	31