

About

The Echoes Report Magazine

The Echoes Report Magazine is a glossy quarterly publication focused on Mid-20th century style & design. Specific emphasis is placed on the 1920s, '30s, '40s, '50s and '60s eras, including Art Deco, Streamline Moderne, Biomorphic '50s and Abstract '60s styles and movements, from kitsch to high-end. As the only publication devoted entirely to the 1930s-1960s eras, The Echoes Report serves as the best resource for informative articles, vintage specialty shops, auction results, events, shows, books, and exhibitions regarding the Modern Movement.

The Supplemental is published between magazine issues to keep our readers abreast of the changes and events in the marketplace. The Supplemental also provides a venue for shop owners, dealers and individuals to present a photograph of the current inventory they have for sale. This combination of pictures and descriptions provides readers with a first-hand look at what's for sale within the Modern Market!

Why not subscribe?

and receive four quarterly issues of the exciting and informative Echoes Report magazine along with the picture-packed Supplementals between issues, all for only \$16.50 per year! (Sample issue \$5.00)

Mail to:

Deco Echoes Publications
The Echoes Report
Post Office Box 2321
Mashpee, MA 02649

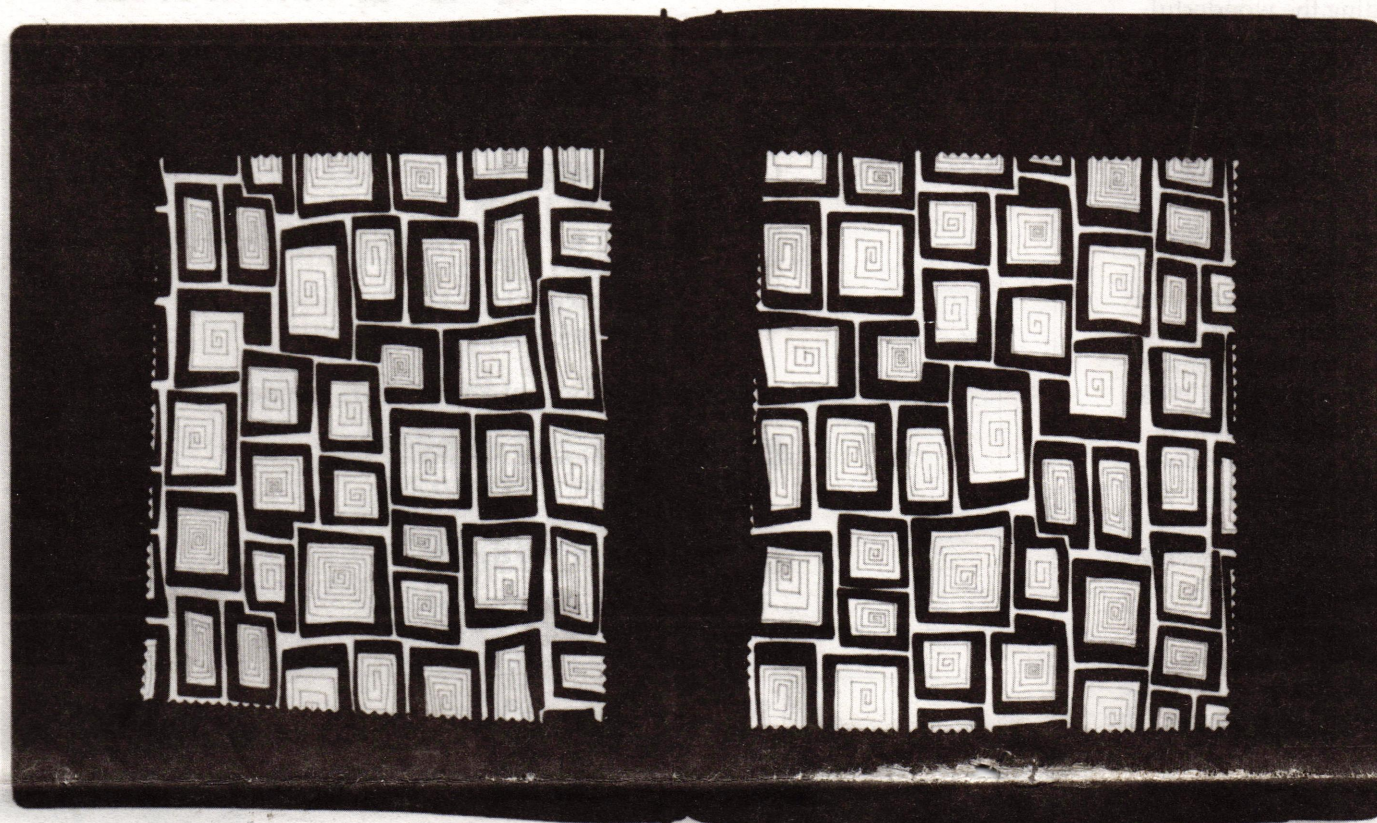
Or, for credit card orders call:

800-695-5768

SUPPLEMENTAL

to *The Echoes Report Magazine*

SPRING 1996 \$1



Textile Archive Auction

Over 800 documentary textile sample books, swatchbooks and original textile designs will be offered by Metropolitan Book Auction in New York City on June 6, 1996. Close to 500,000 swatches, each a piece of textile design history, will be sold. The collection includes over 100 years of design, with items from the 1830s through the 1960s. This, the fifth such auction conducted by Metropolitan, will contain the most comprehensive selection of textile materials ever offered in this country.

Swatchbooks, original textile designs on paper, wallpaper sample books, technical books, and loose antique textiles will be abundant. Cottons, wools and silks, prints, wovens, ethnics, ribbons, laces and even car upholstery textiles will be represented - tens of ▶ 2

Wharton Esherick (1887-1970)

For the first and perhaps only time, a major exhibition and sale of furnishings and woodcut prints by Wharton Esherick, deemed by many to be the most important American woodworker of the 20th century, will be presented in Philadelphia. The pieces on display represent a significant portion of Esherick's entire output and display the full range of his artistry. Most have come from the original owners and have never before been exhibited or available for purchase.

Wharton Esherick (1887-1970) - American Woodworker will be on exhibit from May 3 through July 20, 1996 at the Moderne Gallery in the Old City section of Philadelphia. According to Robert Aibel, owner of the Moderne Gallery, this is an extraordinary opportunity to appreciate and purchase the work of Esherick, ▶ 3

Above: One of over 800 documentary textile sample books, swatchbooks, and original textile designs which will be offered by Metropolitan Book Auction of New York City at its Textile Archive Auction on June 6, 1996.

Deco Echoes Publications
The Echoes Report
Post Office Box 2321
Mashpee, MA 02649

Louis C. Emond Jr.
34 Robin Hood Dr.
Seekonk, MA 02771

BULK RATE
U.S. POSTAGE
PAID
PERMIT #382
SOUTH HOLLAND, IL

Textile Archive Auction
(continued from cover) thousands of bits of inspiration for designers of shirts, dresses, suits, pajama, upholstery, and more. Also featured are periodicals, including the wonderful *American Fabrics* magazines, each full of period photographs, sketches and coordinating swatches.

Print designers take note! A spectacular section of printed silks includes over 100 swatchbooks of printed silks from the turn of the century through the 1950s, with special emphasis on the 1930s and 1940s. Rare for swatchbooks of this era, most of the books are complete, and include up to 10 different colorways for each print. For neckwear designers, thousands of wonderful ideas fill the pages. These range from mild to wild, and track the great decades of the tie - the '30s, '40s, and '50s.

For womenswear, an even greater selection of choices: fantasy florals, chic silk stripes and cute conversationals including 'sailor and his gal', hat and parachute prints, and a charming fairy tale motif. These books memorialize the first great era of colorful and bold prints in fashion.

Not to be missed is a comprehensive collection of swatchbooks containing cotton and flannel shirtings. Flannels include classic pastel stripes, '50s pajama prints, and bold, bright early 20th century prints and plaids. The cotton shirtings books range from classic white on whites to wonderful and interestingly colored plaids, to the cleanest and best of woven men's shirtings.

Rounding out the auction will be several swatchbooks bursting with French silk ribbons from the turn of the century, woven dress silks, wonderful jacquards, massive books of suiting wools, and a selection of kitsch wallpaper

The MODERN MARKET

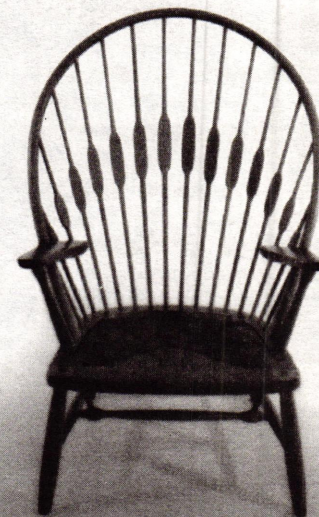
**WANTED
COLLECTIBLES
KNOLL
H. MILLER
JUHL
ALTO
NOGUCHI
VENINI E.T.C.**

2 Stores and a 1500 square foot warehouse!

20TH CENTURY CLASSICS

**Tel: (214) 880-0020
Fax: (214) 351-6208
3017-B Routh Street
Dallas, TX 75201**

SEE US AT THE LA MODERNISM SHOW



Right:
Hans Wegner
"Peacock Chair"
designed in 1947



Citybarn Antiques

362 Atlantic Avenue, Brooklyn, NY 11217 (718) 855-8566

Featuring Heywood-Wakefield for the advanced collector...

- 1930s:** Davenport (C3172-63), Armchair (C3172C), Round coffee table (C2921G), Airflow 5-drawer chest, Crescendo vanity & vanity seat.
- 1940s:** Riviera 4-pce. bedroom set, Niagara vanity & vanity seat, Tambour front chest (M177), Corner bookcase, Straight bookcase.
- 1950s:** Room divider, Vanity desk (M926), Tambour utility case (M179), Encore triple dresser with mirror, Cabinet utility headboard (M780 4/6), Center table (M393G)
- 1960s:** Kneehole & student desks, Encore bedroom sets, Double & Triple pedestal drop-leaf extension tables.

And more...Call us with your "wish list." Buy/Sell/Rent
Stop by our web page: <http://www.deco-echoes.com/citybarn/>



ELEKTRA

**4327 N. Western Avenue,
Oklahoma City, OK 73118
(405) 524-4327 v/mail (405) 524-1530 fax**

**Stop by our web page:
<http://www.deco-echoes.com/elektra/>
Wed-Sat Noon-7PM • Sunday 1PM-7PM**

**Phone or fax for free catalog of vintage
items, books, and reproductions**

Russel Wright: Chase Ice Bucket, Bun Warmer,
on Modern-Mates Conant Ball Sideboard,
& 3 Ericofons fully restored & working



ART & INDUSTRIAL DESIGN SHOP

ART

SPECIALIZING IN

- 1960's Specialists
- American Deco
- 1950's Design
- Collectibles
- Italian Glass
- Furniture
- Paintings
- Sculptures
- Industrial Designs
- Select from our world famous collections



BUYING - SELLING - RENTING

DONALD DESKEY

GEORGE NELSON

SAARINEN

KNOLL ASSOC.

MARCELLO FANTONI

GILBERT ROHDE

VENINI GLASS

SEGUSO

D.H. CHIPARUS

EAMES

ORREFORES

GOLDSCHIEDER

KEITH HARING

VERNER PANTON

FULVIO BIANCONI

PICASSO

MIRO

K.F. HAGENAUER

SPRATLING

and many more!!

"one stop shop
for 20th Century Decorative Arts"
We cater to the DESIGN, MOVIE,
FASHION, AND COMMERCIAL INDUSTRY

399 Lafayette St. @ 4th St./ New York City

212-477-0116 / FAX 212-477-1420

HRS. MON-SAT 11:30 AM - 6:30 PM

GET
HERE
TODAY
!

books from the 1950s, in perfect condition.

Additionally, an unusual collection of archival, catalogued books full of printed cotton swatches, certainly the most comprehensive collection ever to come to sale, will be offered. These books contain hundreds, if not thousands, of large sized swatches of printed cotton in the colors that are emblematic of the height of production of this type of fabric, 1860-1920.

Finally, over one thousand original designs for textiles will be auctioned. Hand painted, these designs range from the 1920s - 1970s, and represent all styles for apparel and home furnishings textiles.

Whether to bid or to browse, don't miss this historically significant collection; there is a week-long preview, beginning on May 31 and running through June 5, 10am-5pm every day, where you can scan history. The collection will be auctioned on Thursday, June 6 at 1:00pm. For further information call (212) 929-4488.

Wharton Esherick

(continued from cover) whose sculptural treatment of wood made him the 'father' of modern American craft furniture.

Retrospective Esherick exhibits were held at the Museum of Contemporary Crafts in New York in 1958 and at the Philadelphia Civic Center in 1971, several one-man print shows have been held in galleries, and selected works have been included in major museum exhibitions over the years. However, there has never been an offering of this scope. Approximately 35 pieces of wood work, primarily from Esherick's most influential period (the 1950s and '60s), and more than 75 different print images (1923-1933) will be in the Moderne Gallery show.

This exhibition and ▶ 7

EVENT REMINDERS

MAY

1 William Doyle Galleries' Important Estate Jewelry Auction, New York, NY (212) 427-2730

2-4 Czechoslovakian Glass & Pottery Convention, Kansas City, MO (816) 891-9115

11-12 LA Modernism Show, Los Angeles, CA (310) 455-2886

11 Monsen & Baer Perfume Bottle Auction VI, Burlingame, CA (703) 938-2129

13 Antique Textile Extravaganza, Sturbridge, MA (207) 439-2334

14-19 Brimfield Antique Show, Brimfield, MA (413) 283-6149

18 Skinner's Art Glass & Lamps, Arts & Crafts, Art Deco & Modern Auction, Boston, MA (617) 350-5400

17-18 Tarheel Depression Glass Club Show, Burlington, NC (919) 834-6042

18 LA Modern Auction, W. Hollywood, CA (213) 845-9456

18-19 20th Century Ltd. Show & Sale, Oak Park, IL (708) 879-5603

19 Treadway Gallery's 20th Century Auction, Chicago, IL (513) 321-6742

25-27 Baby Boombazaar Show & Sale, St. Petersburg, FL (813) 398-2427

31- June 2 Metropolitan's Vintage Fashion & Antique Textile Show, New York, NY (212) 463-0200

JUNE

1-2 Art Deco-'50s Sale, San Francisco, CA (415) 599-DECO

1-2 1996 Art Deco & Vintage Clothing Show, Indianapolis, IN (317) 261-1405

6 Swann Galleries' Autographs Auction, New York, NY (212) 254-4710

6 Metropolitan's Antique Textile Swatchbook Auction, New York, NY 212-929-4488

7-8 Christie's 20th Century Decorative Arts Auction, New York, NY (212) 546-1000

9 ADSW's 13th Annual Exposition of the Decorative

The MODERN MARKET

Kenneth Paul Lesko
20th Century Decorative Arts

Specialist in Italian Glass 1920 ~ 1970

Wanted:

Venini, Martinuzzi, Scarpa, Seguso, Barovier, Frattelli Toso, A. Toso / Dino Martens, MVM Cappelin, CVM, Avem, Salir, Nason, Cenedese, Salviati, Vistosi, A. Barbini, etc.

We aggressively pursue the best examples of these producers and artists. Top prices paid.

PO Box 16099, Rocky River, OH 44116-0099 • Call: (216) 356-0275



20TH CENTURY LIMITED

"A MARKET OF 20TH CENTURY ANTIQUES"

MAY 17, 18, & 19

FEATURING FURNITURE & ACCESSORIES FROM THE FIRST 70 YEARS OF THE 20TH CENTURY.

Exposition & Sale located at: 19th Century Woman's Club; 178 N. Forest Ave.; Oak Park, IL. (708) 879-5603

Fri: 6:30pm-9:30pm; Sat: 9:30am-6pm;

Sun: 10:30am-6pm; Admission \$5 - Free Parking



A 60-DEALER
ANTIQUES AND
COLLECTIBLES
SHOW FEATURING

OUTSTANDING
ART DECO &
DECORATIVE
OBJECTS FROM
ALL MAJOR 20TH
CENTURY DESIGN
MOVEMENTS

13TH ANNUAL
1996
EXPOSITION
OF THE
DECORATIVE
ARTS
Sunday, June 9
9:00am-6:00pm
ANDREW W. MELLON AUDITORIUM
1301 CONSTITUTION AVE, NW, WASHINGTON, DC

FOOD AND BEVERAGES AVAILABLE

LIMITED STREET PARKING

ART DECO SOCIETY OF WASHINGTON

GENERAL
ADMISSION
\$6.00

SOCIETY
MEMBERS
\$5.00

MEMBERSHIP
AVAILABLE AT
THE DOOR

AUDITORIUM
ACROSS FROM
NATIONAL MUSEUM
OF AMERICAN
HISTORY

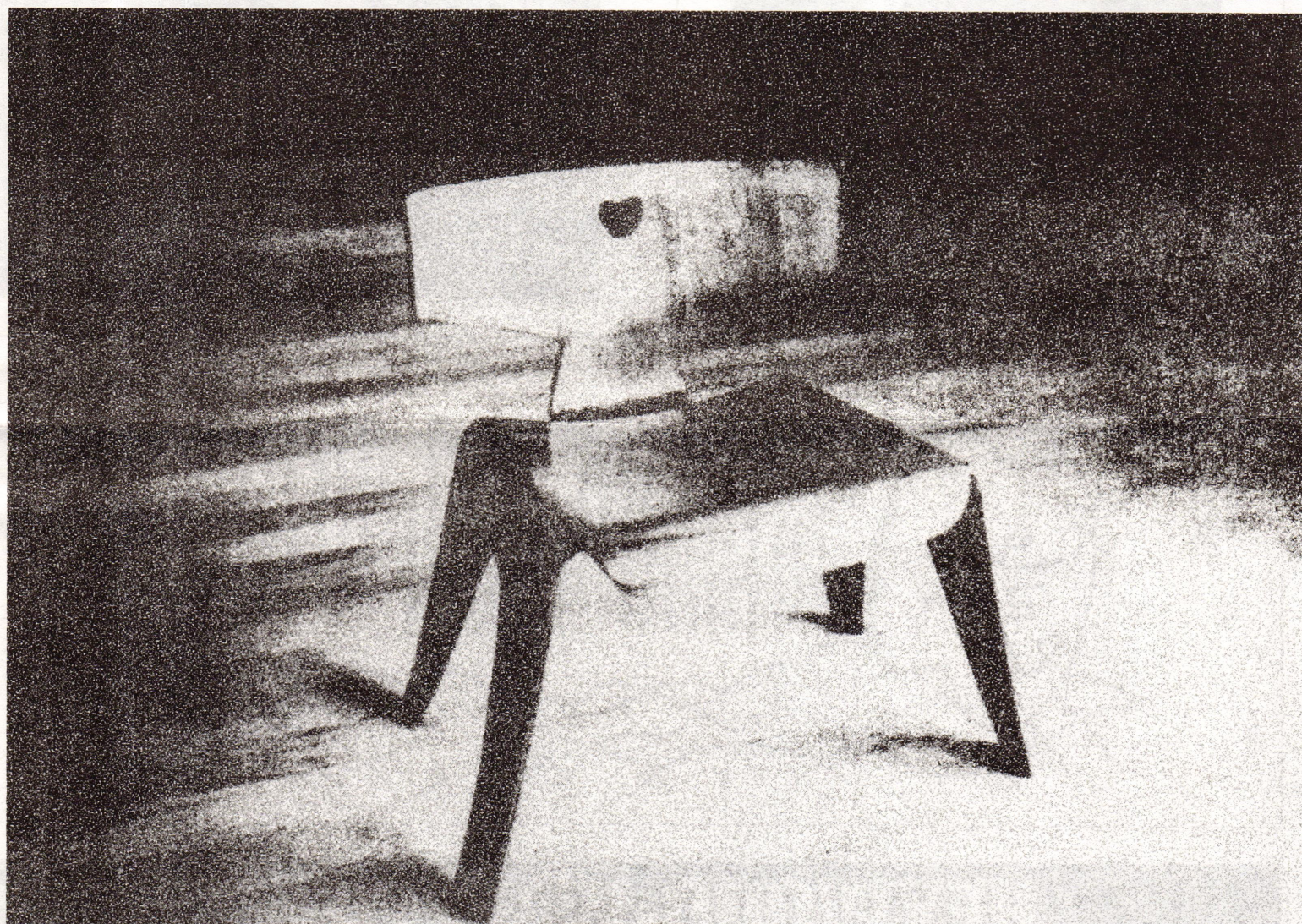
FEDERAL TRIANGLE
METRO STATION

MEMBERSHIP &
SHOW INFORMATION:
202.298.1100

ADSW is a non-profit organization dedicated to preserving Deco architecture & to celebrating the Deco Era of design, dance, film, and music

Gretta Magnussen Grossman George Nelson Paul T. Frankl Heinrick Van Kepple Taylor Green Charles Eames John Keal Florence Knoll Gilbert Rohde Russel Wright Ludwig Mies van der Rohe Paul H. Polak Gio Ponti George Nakagshima Saarinen Paul McCobb Frank Gehry Alamy Norman Chabon Charles Schuler T.H. Robsjohn-Gibbings Blauer Alvar Aalto Winston Churchill Carl Moschelland Loewy Poul Kjaerholm Finn Junli Charles Pollack Eero Aarnio Pierre Jeannerette Franco Albini Massimo Vignelli Jack Waldheim Edgar Parolucci Henry Dreyfuss Walter Dorwin Teague Marcel Breuer Ernest Dorner M. J. Heisterkamp Arne Jacobs Norman Bel Geddes Donald Deskey Henry Seydus Eames Eero Saarinen Alvar Aalto J. J. Popius Warren McArthur Gerrit Rietveld Jacobus Johannes Pieter Oud Charles Pollock Ruhlmann Hans Wegner Jens Risom Georg Jensen Bugatti Edgar Brandt Eero Saarinen Charlotte Perriand Paul Poiret Eliel Saarinen Frederick Kiesler Alvar Aalto Angelo Testa

L.A. Modern Auctions



Los Angeles Modern Auctions Presents a
20th Century Sale 1900-Present
Saturday May 18, 1996

Accepting catalogue orders now

1728 N. Laurel Canyon Blvd. #C • W. Hollywood, CA 90046

213 . 845 . 9456

Arts, Washington, DC (202) 298-1100

11 Skinner's Fine Jewelry Auction, Boston, MA (617) 350-5400

13 Swann Galleries' Art & Architecture Books Auction, New York, NY (212) 254-4710

20 Swann Galleries' Modern Literature Auction, New York, NY (212) 254-4710

21-24 Diner-Rama 96 Convention to Benefit the American Diner Museum, Providence, RI (508) 791-1838

23 Liberty Collectibles Expo, Liberty State Park, Jersey City, NJ (212) 255-0020

25 Christie's Watches Auction, New York, NY (212) 546-1000

JULY

8 Antique Textile Extravaganza, Sturbridge, MA (207) 439-2334

9-14 Brimfield Antique Show, Brimfield, MA (413) 283-6149

12-14 Novelty Salt & Pepper Shakers Collector's Convention, Trevese, PA (407) 588-5368

19-20 American Art Pottery Show & Sale, Zanesville, OH (812) 547-5707

ONGOING

Through June 9 "The Art of Peter Voukos: A Survey of 70 Ceramic Pieces from the 1950s-1990s" at the American Craft Museum in New York (212) 956-6047

Through June 15 "Something For Everyone: The 1964-65 New York World's Fair" multimedia exhibition at the Flushing Council on Culture and the Arts in Flushing, NY (718) 463-7700

Through July 28 "Images of an Era: Examining MOCA's Art Acquisitions Between 1940-1975" at MOCA in Los Angeles, CA (213) 626-6222

Through Oct 1 "Vienna Moderne: 1895-1930" at the Norwest Center in Minneapolis, MN (612) 667-5136

Through May 19 "Rooms In Time: Design from the '50s, '60s, '70s and '80s" at the Vitra Design Museum (212) 879-8074

Event schedules are subject to change. Please call to confirm dates & times.



IN THE NEXT ISSUE OF

ECHOES

REPORT
Magazine

RUBA ROMBIC

PHILCO PREDICTAS

PAUL T. FRANKL

BAKELITE

ROBSJOHN-GIBBINGS

ALSO

MODERN QUARTERS

VINTAGE VIEWPOINT

LAST LOOK

EXHIBITIONS

WHAT'S HOT

BOOKSTORE

CLASSIFIEDS

AUCTION HIGHLIGHTS

CALENDAR OF EVENTS

SHOW UPDATES

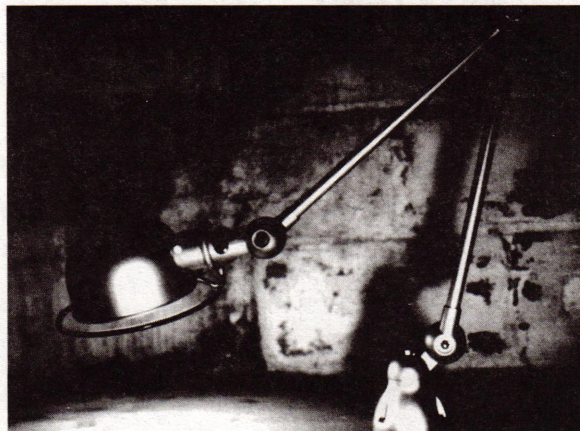
COMING MID-JUNE



See subscription details on front cover

The MODERN MARKET

design: Jean Louis Dumeq, 1951



jielde luminaires
toronto canada

tel: + 416.504.4919
fax: + 416.504.8691

RED SQUARE

BUYING
SELLING
RENTING

CLASSIC MODERN FURNISHINGS
PAINTINGS FANS SCULPTURE
MICROPHONES LIGHTING
WORKS ON PAPER

3617 PARRY AV. DALLAS TX 75226 214.821.8908 214.823.5291 FAX
authorized retailer herman miller for the home

Suite Lorain

8,000 sq. ft., showroom of Deco to 50's:

- Vintage designer clothing and shoes
- Vintage fabrics
- Fine art paintings and prints
- Kitchen kitsch
- Books, records and magazines
- Ceramics and glass
- Lighting
- Collectibles
- Fine furniture by Heywood Wakefield, Eames, Saarinen, Herman Miller, etc.
- Clocks, televisions and radios

Visit our "Bitchin' Kitchen" and have a cup of coffee!

OPEN DAILY 11:00-5:00

7105 LORAIN AVE. CLEVELAND, OH 44102 (216) 281-1959

Air Conditioned

HEYWOOD-WAKEFIELD

100 TO 150 PIECES IN SHOWROOM

We carry Blonde, Streamline Original 1930s to 1950s Furniture.
We also offer Brown/Saltman, Lloyd, Russel Wright, Danish Modern & 1950s Chrome Dinette Sets.

Located in the antique capital of California... Over 50 Shops, 6-8 Malls, 10 to 12 Cafes/Restaurants, Several Fine Jewelry Shops, Old Time Drug Store, and Unique Coffee Houses

WOODY'S

EARLY MISC.
Antiques & Collectibles

Open Everyday 11-5pm • Evenings by appointment.

DECO THRU 1960'S

169 N. Glassell, Orange, CA 92666 • (714) 744-8199 • Located in Old Towne

The MODERN MARKET

WOW!
FUNCTIONAL FIFTIES - Inspired OTTOMANS & VANITY Seating in Nostalgic Barkcloth - Big Prints To Animal Motifs! CALL...

DECO FISH PALETTE

FLYING WEDGE

Ottoman Empire

FOR PRICING & PRODUCT SHEETS ON OUR MANY STYLES
PHONE 407-951-0724
FAX 407-727-2323
RETAIL & WHOLESALE



Is this vase worth:

A.\$150 B.\$1500 C.\$15000

FINALLY A TWO VOLUME PRICE GUIDE DEVOTED TO WORLDWIDE AUCTION RESULTS OF ITALIAN GLASS

VOLUME 1: ITALIAN GLASS PRICE GUIDE, 28 pages, 94 vases illustrated,

over 500 lots of non Venini, Italian glass of the 20th century described and priced. \$8.95

VOLUME 2: VENINI GLASS, 20 pages,

85 items illustrated, over 275 lots of Venini glass described and priced. \$5.95

SPECIAL ECHOES PRICE OF \$14.00 PLUS \$2.50 SHIPPING AND HANDLING SEND A CHECK OR MONEY ORDER TO:

VETRI: Italian Glass News

PO Box 191, Fort Lee, NJ 07024

Wharton Esherick

(continued from page 3) sale has been made possible by a unique circumstance: many of Wharton Esherick's one-of-a-kind pieces of furniture, lighting fixtures, household utensils, sculpture, architectural elements, paintings and woodcut prints have become available at the same time.

Since Esherick's death in 1970, several of his most important patron/collectors have passed away, or have grown older and moved to smaller residences. In addition, interiors that Esherick designed for particular homes have been dismantled. In some cases, the furniture has been handed on to children and grandchildren. Now they, or their heirs, are offering these exceptional pieces for sale through the Moderne Gallery.

"I am excited that the Moderne Gallery will be presenting this show," said Aibel. "I believe that Wharton Esherick, though well-known to museum curators nationally and to many in the Philadelphia region where he lived and worked, has not been given his due as the man Sam Maloof called 'the dean of American craftsmen.' We hope this exhibition will bring new light to his importance and influence in 20th century design."

Robert Edwards, who is an acknowledged expert on Esherick and has served as a representative for Esherick patrons for many years, is collaborating on the exhibition with Aibel.

"Wharton Esherick's pioneering influence on Wendell Castle, Arthur Espenet Carpenter, Sam Maloof and scores of today's designer-craftsmen is profound," says Edwards. "He provides the bridge between the Arts and Crafts Movement and modern Art Furniture. Esherick believed in a style that was a life style, and was one of the ►8

METROPOLITAN



VINTAGE FASHION & ANTIQUE TEXTILE SHOW

MAY 31 - JUNE 2

FRIDAY PREVIEW, NOON-6PM, \$15

SATURDAY, NOON-6PM, \$5

SUNDAY, NOON-5PM, \$5

MANHATTAN'S MOST POPULAR TRENDSETTING FASHION SALE FROM VINTAGE SOURCES, 1800'S TO 1970'S

Dresses • Suits • Coats • Shoes • Hats • Jewelry
Lingerie • Men's Clothing & Accessories
Children's Clothing • Laces • Linens • Paisleys
and other decorative textiles

20TH CENTURY • 1996 Design Show Oct. 3-6

friday, noon-6pm, \$10
saturday, noon-6pm, \$5
sunday, noon-5pm, \$5

thursday, october 3rd preview to benefit
The Ovarian Cancer Research Fund, Inc.
6 - 9pm, \$50 - \$150

Don't miss other Metropolitan events, be on our mailing list...

Call 212.463.0200 x236

110 W. 19TH STREET, NEW YORK, NEW YORK 10011

TEL 212.463.0200 x236 FAX 212.463.7099



Wharton Esherick
(continued from page 7) fore-
runners in maintaining the
handcraft tradition in the
20th century, in the face of
booming industrialization.

The centerpiece of the
Moderne Gallery exhibit
will be the asymmetric
hickory table with black
phenol top and four hickory
chairs with rawhide seats
that Esherick created for the
1939-40 New York World's
Fair, for the "America at
Home" display designed
with architect George
Howe. The suite is an ex-
quisite example of
Esherick's use of geometry
and space in his designs
and is acknowledged as a
masterpiece.

Other historically sig-
nificant works on display
will be a large oak archway
and a part of the library
(with sofa and drop-lid
desk) from the home of
Judge Curtis and Nellie Lee
Bok of Philadelphia. In the
1930s Esherick designed
and constructed the interi-
ors of the Bok house, called
"one of America's outstand-
ing interiors" by The
Britannica Encyclopedia of
American Art.

Included will be a
broad selection of seating,
tables and chairs, cabinetry,
lighting, sculptures, and
bowls. There will also be
examples of his famous
three-legged stool, library
steps and hammer handle
chair. And prints will be a
major feature of the show,
including at least one copy
of almost every Esherick
woodcut.

For further information
on the Esherick exhibition
and sale, contact the
Moderne Gallery at (215)
923-8536.

*Note: A presentation entitled
"Wharton Esherick 1887-1970:
Grandfather of 20th Century Ameri-
can Woodworking" will be presented
at the Philadelphia Furniture Show
on May 11 at 2:00pm. The presenta-
tion will be moderated by Robert
Aibel with Wendell Castle and
Mansfield Bascom, curator of the
Wharton Esherick Museum. For fur-
ther information on the presentation
call (215) 440-0718. ●*

The MODERN MARKET

ZIGZAG

ART DECO - MODERNE

20th C. FURNISHINGS

INDUSTRIAL DESIGN

IRONWORK

BAKELITE

3419 NORTH LINCOLN AVENUE

CHICAGO, IL 60657

WED - FRI 2-6 / SAT 1-6 / SUN 1-4
312-525-1060



spotlight on Modern

*High Style Furniture + Accessories
of the 20th Century*

Bill and Kristi Lewis
303-744-2774
800-853-7864

Antique Center on Broadway
1235 So. Broadway
Denver, CO 80210
(303) 744-1857

free
free
freebie
freebie

Place your free classified on the deco
echoes web site! It's absolutely free!

<http://www.deco-echoes.com>

Stop by these shops on the Deco Echoes Web site:
No Name Woodshop • City Barn Antiques • Lampada
Shaboos • Art & Industrial Design Shop
Hearts Desire • Flashback • Retrospect • Elektra
Red Accordion • Pamela Simon Vintage Textiles
Michigan Modernism Exposition • Do Wah Diddy
and many, many more to follow!