





THE MINI 02

high performance
LED luminaires

The Mini 02 Family of LED luminaires; a revolutionary MR16 size light engine that produces more light and a more beautiful beam with less wattage than traditional halogen sources.

For consistency throughout a space, each member of the Mini 02 family features:

- Custom engineered TIR optics with excellent glare control
- Three beam spreads available: Spot (12°), Medium (27°) and Flood (40°)
- Four standard color temperatures: 2700K, 3000K, 3500K and 4000K
- 2 step MacAdam ellipse tolerance
- A CRI of 83 or 93+
- Rated for 50,000 hours of life to L70
- Fully dimmable
- Five (5) year complete warranty



CTL805 Track Series

- Horizontal or vertical track housing
- Available in three (3) wattages: 11W, 16W, and 24W
- Up to 1800 delivered lumens



RDA2L Downlights

- Two wattage packages available: 11W, for use in insulated ceilings, and 16W delivering up to 1200 lumens, for use in non-insulated ceilings
- Downlight reflector and wall wash trims available



RDA4L Recessed Multiples


- Unique recessed pull-down lamp heads
- May be used for trimmed or trim-less applications
- Single to four head units available, each head delivering up to 1200 lumens

CONTECH
LIGHTING®

ecoTECHNOLOGY
sustainable energy solutions

www.contechlighting.com

See these and other new products at LightFair 2015!
Visit us at booth 1445



Lighting that goes where your
imagination takes it.

Up a wall, across a ceiling, down to a pendant right in front of you.
All in a single, clean line.

The Linea® and Gräv® 1.5 Families

A perfect pairing. For endless possibility.
amerlux.com/commercial


Passion. Power. Performance.

TWELFTH
ANNUAL

A.L

LIGHT AND
ARCHITECTURE
DESIGN AWARDS

2015
CALL FOR
ENTRIES

ARCHITECTURAL LIGHTING's **12th Annual AL Light & Architecture Design Awards** honors outstanding and innovative projects in the field of architectural lighting design. Winning projects will be published in the July/Aug 2015 issue and featured on archlighting.com. The awards program is open to design professionals worldwide. Projects must have been completed after July 2013.

Entry Deadline: May 11, 2015

Late Entry: June 1, 2015

**Full details and entry forms
available at aldesignawards.com**

DRIVING THE **FUTURE** OF **INFRASTRUCTURE** LIGHTING

With an LED infrastructure solution for every application, Acuity Brands offers the choices you need to find the right lighting and controls with the lowest total cost of ownership



247CL SERIES
FULL CUTOFF LED LANTERN



AVPCL2 SERIES
FULL CUTOFF LED LANTERN



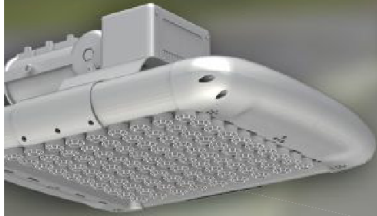
ARDCL SERIES
FULL CUTOFF LED LANTERN

Ideal for **municipalities, utilities, public works** and **residential lighting**, LED lanterns offer:

- + Up to **50%** reduction in energy
- + Over **50%** reduction in maintenance
- + Improved visibility of white light
- + Solutions for 50-150w HID replacement
- + Multiple Full Cutoff distributions
- + Advanced wireless controls

Visit www.acuitybrands.com/infrastructure to learn more about our product solutions

SANSI



SANSI Street Light

Expanding your horizon.



www.sansilighting.com
sales@sansilighting.com
1.800.476.1356

MAR/APR 2015
VOL 29, NO 2

A·L

ARCHITECTURAL LIGHTING

EDITOR-IN-CHIEF

Elizabeth Donoff
edonoff@hanleywood.com
202.729.3647

MANAGING EDITOR

Greig O'Brien
gobrien@hanleywood.com

EDITORIAL

SENIOR EDITOR,
BUSINESS, PRODUCTS, AND TECHNOLOGY
Wanda Lau

ASSOCIATE EDITOR,
BUSINESS, PRODUCTS, AND TECHNOLOGY
Hallie Busta

ASSOCIATE EDITOR, DESIGN
Deane Madsen

ASSISTANT EDITOR, DESIGN
Sara Johnson

ASSISTANT EDITOR,
BUSINESS, PRODUCTS, AND TECHNOLOGY
Caroline Massie

EDITORIAL INTERNS
Cyprien Roy
Leah Demirjian

ART DIRECTOR

Robb Ogle
rogle@hanleywood.com

ART

SENIOR GRAPHIC DESIGNER
Alice Ashe

GRAPHIC DESIGNER
Jen Aranyi

MULTIMEDIA

VIDEO PRODUCTION MANAGER
Kaitlyn Rossi

VIDEO PRODUCER
Lauren Honesty

CONTRIBUTING EDITORS

Elizabeth Evitts Dickinson,
Bill Millard, Aaron Seward

EDITORIAL ADVISORY BOARD

Gregg Ander, FAIA, IESNA • Francesca Bettridge, IALD, IESNA •
Barbara Cianci Horton, IALD • Kevin Houser, IESNA, EDUCATOR IALD •
Mark Loeffler, IALD, IESNA • Paul Zaferiou, IALD

**SUBSCRIPTION INQUIRIES,
CHANGE OF ADDRESS, CUSTOMER SERVICE,
AND BACK-ISSUE ORDERS**

ARCHITECTURAL LIGHTING
P.O. Box 3494
Northbrook, IL 60065
alit@omeda.com
Local: 847.291.5221
Toll-Free: 888.269.8410

PRODUCTION

PRODUCTION MANAGER
Morni Coccaro
mccoccaro@hanleywood.com

AD TRAFFIC MANAGER
Pamela Fischer
pfischer@hanleywood.com

INSIDE SALES
AD TRAFFIC MANAGER
Annie Clark
aclark@hanleywood.com

REPRINTS

Wright's Media
Nick Iademarco
niademarco@wrights
media.com
877.652.5295 ext. 102

LIST RENTALS

Statistics
Jennifer Felling
jfelling@statistics.com
203.456.3339

archlighting.com

One Thomas Circle, N.W. Suite 600 Washington, DC 20005

A·L ARCHITECTURAL LIGHTING (Vol. 29, No. 2 USPS 000-846, ISSN 0894-0436) is published six times per year (Jan/Feb, March/April, May/June, July/August, Sept/Oct, Nov/Dec) by Hanley Wood, One Thomas Circle, N.W., Suite 600, Washington, DC 20005. Periodicals postage paid at Washington, DC, and additional mailing offices. Printed in the USA. Postmaster: Send changes of address to ARCHITECTURAL LIGHTING, P.O. Box 3494, Northbrook, IL 60065.

Canada Post Registration #40612608/G.S.T. Number: R-120931738. Canadian return address: IMEX, P.O. Box 25542, London, ON N6C 6B2.

Distributed free of charge to individuals or firms engaged in the specification of lighting products in the U.S. Publisher reserves the right to determine recipient qualification. Per year, all other U.S. subscriptions \$48; Canada, \$60; Foreign, \$96. Payable in U.S. dollars. For subscription inquiries, address changes, and single-copy sales (\$10 in the U.S., \$15 in Canada, \$20 for other countries, payable in advance) write to ARCHITECTURAL LIGHTING, P.O. Box 3494, Northbrook, IL 60065 or call 847.291.5221 or toll-free 888.269.8410.

A·L ARCHITECTURAL LIGHTING is a trademark owned exclusively by Hanley Wood. Copyright 2015 Hanley Wood. Reproduction in whole or in part prohibited without written authorization.



FOREST LIGHTING

Sustainable illumination



Affordable Performance.

T8 and T5 LED Lamps from Forest Lighting.

*Lightfair
Booth 3081*

Forest Lighting T8 and T5 LED lamps are UL Listed, DLC Qualified, and cost a fraction of what our competitors cost. We offer 3000K to 6000K, 80+ CRI, 100 LPW and 50,000 hours of life. Call us before your next retrofit or new installation, and we'll perform for you because our affordable T8 and T5 LED lamps are in stock now.

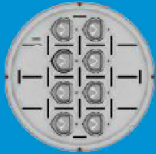


**LED
HIGH-POLE
LAMP**

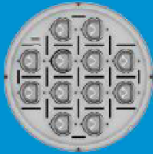


GY50GG

Unique aerodynamic design. Ventilating holes in the bottom and top strengthen air convection; Inclined plane of the separator in the top guides the hot air to flow outward; Air flow upward transfer the heat of radiator to outside to lower lamp's temperature.



8 PCS Module
250W/300W



12 PCS Module
350W/400W/450W

GY7636LD
80/90/100/110/120/140W

**LED
STREET
LIGHTS**



GY500LD
22/28/33/45W

GY650LD
55/65/80/85/90W

GY720LD
33/45/55/65/80/90/100/110W

**SHANXI GUANGYU LED
LIGHTING CO.,LTD.**



Sales Center (Beijing)
Tel: **86 10 62153917**
Fax: **86 10 62153948**
Celular: **86 13071132516**
Email: sales@gyledlighting.com
sales@gyledlight.com
www.gyledlighting.com
www.gyledlight.com



GYLED provides OEM services with the support of its professional R&D and technical departments.

A.L
ARCHITECTURAL LIGHTING

DESIGN GROUP

EXECUTIVE VICE PRESIDENT
Ron Spink
rspink@hanleywood.com, 202.736.3431

GROUP EDITORIAL DIRECTOR,
DESIGN AND COMMERCIAL CONSTRUCTION
Ned Cramer

ADVERTISING SALES

SENIOR DIRECTOR,
STRATEGIC AND INTERNATIONAL ACCOUNTS,
NORHEAST, GREAT LAKES,
GEORGIA, FLORIDA
Dan Colunio
dcolunio@hanleywood.com
202.736.3310

STRATEGIC ACCOUNT MANAGER, MIDWEST
Michael Gilbert
mgilbert@hanleywood.com
773.824.2435

SENIOR DIRECTOR, DIGITAL SALES
Christie Bardo
cbardo@hanleywood.com
703.307.3014

STRATEGIC ACCOUNT MANAGER,
UNITED KINGDOM AND EUROPE
Stuart Smith
stuart.smith@globalmediasales.co.uk
44.020.8464.5577

INSIDE SALES,
BUSINESS DEVELOPMENT MANAGER
Jaeda Mohr
jmohr@hanleywood.com

NATIONAL ACCOUNT MANAGER, LIGHTING
Cliff Smith
csmith@hanleywood.com
864.642.9598

STRATEGIC ACCOUNT MANAGER,
CHINA, HONG KONG, TAIWAN
Judy Wang
judywang2000@vip.126.com
86.13810325171

AUDIENCE MARKETING DIRECTOR
Mary Leiphart

EXECUTIVE DIRECTOR, DIGITAL
MARKETING AND SALES ENABLEMENT
Matthew Carollo

HANLEY WOOD MEDIA

PRESIDENT, MEDIA
Dave Colford

VICE PRESIDENT,
PRODUCT DEVELOPMENT
Rizwan Ali

SENIOR DIRECTOR,
PRINT PRODUCTION
Cathy Underwood

DIRECTOR,
USER EXPERIENCE AND INTERFACE DESIGN
Aubrey Altmann

SENIOR VICE PRESIDENT,
AUDIENCE OPERATIONS
Sarah Welcome

SENIOR DIRECTOR,
MEDIA SERVICES AND ACCOUNT COORDINATION
Mari Skelnik

DIRECTOR, CONTENT ANALYTICS
Jennifer Malkasian

EXECUTIVE VICE PRESIDENT,
STRATEGIC MARKETING SERVICES
Tom Rousseau

SENIOR VICE PRESIDENT,
STRATEGIC MARKETING SERVICES
AND CONSUMER MEDIA
Jennifer Pearce

EVENT PLANNER
Kristina Reardon

HANLEY WOOD

CHIEF EXECUTIVE OFFICER
Peter Goldstone

VICE CHAIRMAN
Frank Anton

CHIEF FINANCIAL OFFICER
Matthew Flynn

PRESIDENT, METROSTUDY
Christopher Veator

DIRECTOR OF SALES,
EMERGING ACCOUNTS GROUP
Philip Hernandez

VICE PRESIDENT,
CORPORATE CONTROLLER
Keith Rosenbloom

PRESIDENT, MEDIA
Dave Colford

PRESIDENT, MARKETING
Jeanne Milbrath

SENIOR VICE PRESIDENT, MARKETING
Sheila Harris

VICE PRESIDENT,
GENERAL COUNSEL
Michael Bender

PRESIDENT, DIGITAL
Andrew Reid

SENIOR VICE PRESIDENT,
CORPORATE SALES
Paul Mattioli

VICE PRESIDENT,
FINANCIAL PLANNING AND ANALYSIS
Ron Kraft

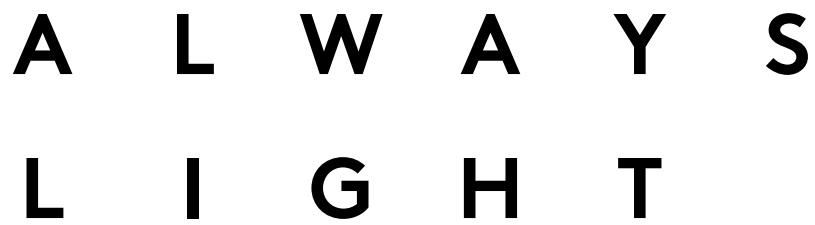
From Hanley Wood, publisher of ARCHITECT, AQUATICS INTERNATIONAL, BUILDER, CONCRETE & MASONRY CONSTRUCTION PRODUCTS, CONCRETE CONSTRUCTION, THE CONCRETE PRODUCER, CUSTOM HOME, ECOBUILDING REVIEW, THE JOURNAL OF LIGHT CONSTRUCTION, MASONRY CONSTRUCTION, MULTIFAMILY EXECUTIVE, POOL & SPA NEWS, PROSALES, PUBLIC WORKS, REMODELING, REPLACEMENT CONTRACTOR, RESIDENTIAL ARCHITECT, and TOOLS OF THE TRADE magazines.

Disclosure: ARCHITECTURAL LIGHTING will occasionally write about companies in which its parent organization, Hanley Wood, has an investment interest. When it does, the magazine will fully disclose that relationship.

Privacy of mailing list: Sometimes we share our subscriber mailing with reputable companies we think you'll find interesting. If you do not wish to be included, please call us at 888.269.8410.



selux

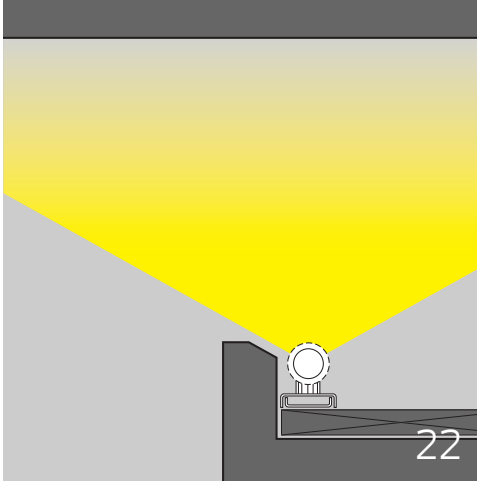
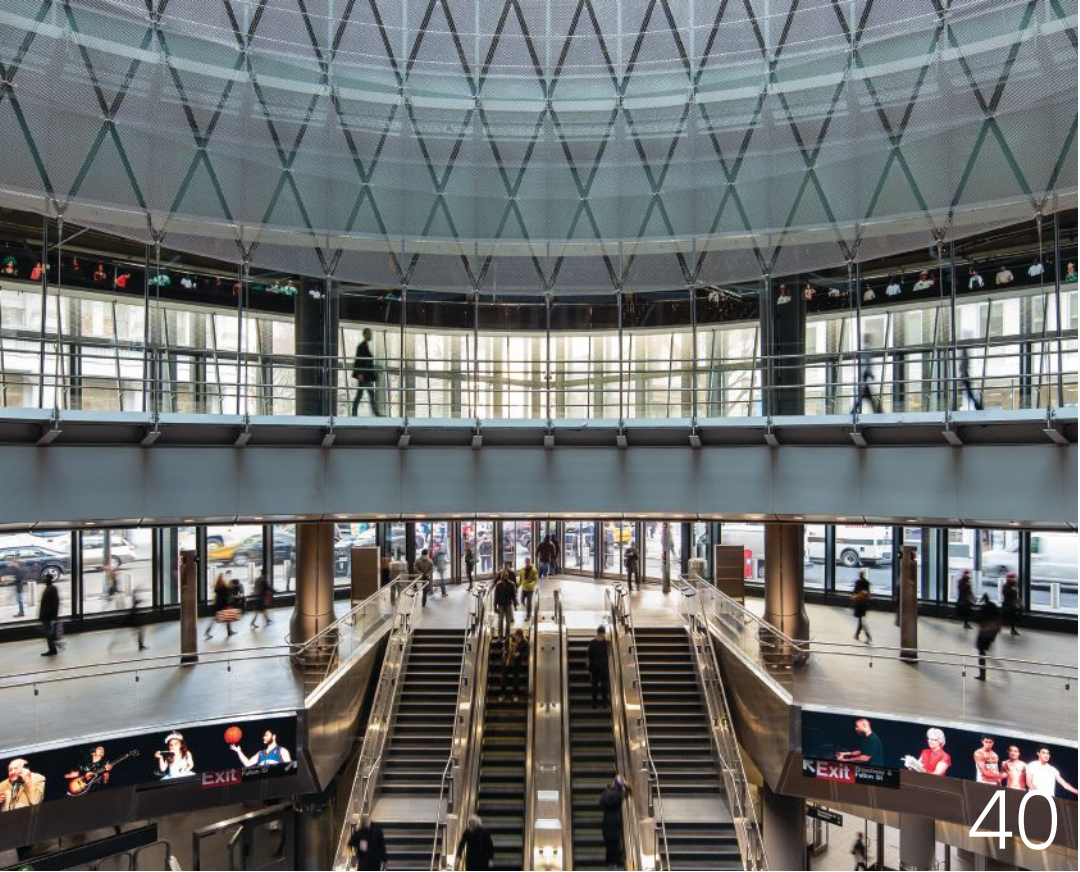


ALWAYS
LIGHT



Visit us at LIGHTFAIR® International 2015
May 5-7, 2015 - Booth #4123

selux.us



• CONTENTS

• FEATURE

The Sky in the Subway James Carpenter Design Associates, Grimshaw, and Arup design a giant daylight reflector that draws eyes to the sky, p. 40

• ONLINE FEATURE

Daylighting Evolution SRG Partnership and the University of Oregon's Energy Studies in Buildings Laboratory have spent the past decade researching and developing new ways to passively and evenly daylight spaces, online at archlighting.com

• FRONT

Comment The lighting designer's expanded role as technology expert, p. 10

Briefs IALD 2015 election results, IES publishes new documents for SSL, and more, p. 12

• DEPARTMENTS

DESIGN

Report Despite the credentialing program having completed its beta-testing stage, many lighting designers are still unaware of the initiative's developments, p. 17

In Focus Breaking down the components of cove lighting, p. 22

TECHNOLOGY

Technology New materials in solid-state lighting like moldable silicones and other nascent technologies are setting the stage for more freedom in design, p. 27

Products Panel and fixture manufacturers are developing OLED luminaires that show off the potential of the still-niche technology, p. 34

BACK

One-on-One Interview with Stephen Selkowitz, group leader in the Windows and Building Envelope Materials group and senior adviser for Building Science at Lawrence Berkeley National Laboratory, p. 56

ARCHLIGHTING.COM As always, check our website for expanded article content, videos, and news. On the site, you can subscribe to our email newsletter, AL Notes, and find a link to ARCHITECTURAL LIGHTING's digital edition.

On the Cover:

The Sky Reflector-Net at Fulton Center, in New York City. Photo by Connie Zhou/OTTO.

Left: James Ewing/OTTO



Introducing **lumenalpha**™

With thousands of completed projects in over 40 countries, Lumenalpha brings Europe's most successful LED downlights and spotlights to North America, giving you immediate access to a trusted product line with a proven track record. See the full range at Lumenpulse.com.

lumenpulse™

ADDITIONAL SERVICES: THE LIGHTING DESIGNER AS TECHNOLOGY EXPERT

“Does a lighting designer really need to know about the intricacies of binning, where an LED sits on the blackbody curve, or whether or not its tolerance lies within a two-step or a three-step MacAdam ellipse?”

As LEDs become the predominant light source in the industry’s arsenal of product offerings, the rate at which the technology is advancing shows no signs of slowing. What that means for lighting designers and lighting manufacturers alike is a continued level of anxiety and frustration in keeping up with the latest technical information and LED component compatibility issues. This frustration was palpable at LEDucation, the solid-state lighting (SSL) product expo and seminar series held at the beginning of March in New York City.

The complexity of keeping up with SSL has never been greater. The challenge continues to be to what extent does the lighting designer need to be a technology expert? Does a lighting designer really need to know about the intricacies of binning, where an LED sits on the blackbody curve, or whether or not its tolerance lies within a two-step or a three-step MacAdam ellipse? More importantly, does this type of technical information and the questions that go with it move the focus of the designer–manufacturer dialogue away from where it should be—on lighting design solutions?

Over the past several years, as the industry has adopted these new sources and figured out how to update best practices to coordinate with the technical specifics of SSL, a number of checklists have emerged in an effort to aid designers in evaluating different product lines. This has been a helpful start, but as highlighted by one of the LEDucation seminar sessions (“Focusing on the Problems with the Execution of Integrating LEDs into the Built Environment”), those initial metrics—such as lumens per watt, and LM-79 and LM-80 compliance—are no longer sufficient. Rather, designers require a more specific set of metrics that get closer to key performance issues of concern such as color range and stability, and controllability and ease of dimming without inducing flicker. (As a quick aside, the industry also needs to come to consensus on the topic of flicker and establish a separate set of metrics for this condition.)

To their credit, lighting designers have arrived at this heightened point of technical awareness

because they have spent the past decade educating themselves about SSL products and learning, often painfully in real project time, by trial and error what can go right and what can go wrong when specifying them.

In the LEDucation seminar session mentioned—which included lighting designers Brooke Silber of Jan & Brooke Luminae, Paul Gregory of Focus Lighting, and Jim Benya of Benya Burnett Consultancy, as well as lighting manufacturer Gary Trott of Cree—the panelists highlighted the challenges that designers face on a daily basis in understanding how to both specify LED products and communicate to clients the risks involved with using an emerging technology. Benya suggested that field-measurable metrics such as candlepower, correlated color temperature, CRI, R9 values, flicker, and beam spread are some of the more useful criteria by which to test and gauge product performance.

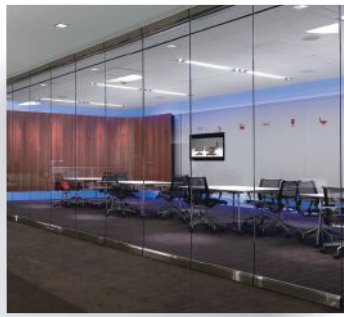
Beyond metrics, the designer’s responsibility is also changing. At the same seminar, panelist Gregory noted that it’s more important than ever for the designer to test what they are specifying, and that if the manufacturer cannot provide data and a sample then the designer is obligated to inform the owner or client that untested products are part of the specification.

This additional complexity in the designer–client relationship changes the nature of accountability and the contractual process. It opens room for debate about where responsibility lies when problems arise with a source or a fixture. Does it fall to the designer? The manufacturer? The component manufacturer? The chip producer? At this time, we don’t have a clear answer.

Reliable, validated, easily accessible products and product literature is a key to this discussion, as is a manufacturing community that stands behind its products. What’s at risk is not just the adoption of a new technology, but the loss of the designer’s time focusing on their main work: lighting design.

Elizabeth Donoff, Editor-in-Chief
edonoff@hanleywood.com





Innovation you can rely on™

With the industry's broadest portfolio of lighting and controls solutions, coupled with our experience and vision, Eaton's Cooper Lighting business can provide you with the unparalleled guidance you need for your next project.

Visit us at LIGHTFAIR booth 1157.

eaton.com/lighting

Cooper Lighting
by **EATON**

THE IALD ANNOUNCES ITS 2015 ELECTION RESULTS

Active participation among the membership resulted in a tie, and required a run-off vote to select the third director at large position.

text by Elizabeth Donoff

The International Association of Lighting Designers (IALD) recently announced the results of its 2015 elections for its board of directors and membership committee, as well as the Lighting Industry Resource Council's (LIRC) Steering Committee Members. Active participation among the membership resulted in a tie between Ronald Kurtz and Paul Beale and required a run-off to select the third director at large position. For more information about the IALD's organizational structure, visit its website at iald.org.

IALD PRESIDENT ELECT

IALD TREASURER

IALD DIRECTORS AT LARGE (THREE POSITIONS)



Victor Palacio
Ideas En luz
Tlalnepantla De Baz,
Mexico



David Ghatan
CM Kling + Associates
Alexandria, Va.



Denise Fong
Candela
Lynnwood, Wash.



Kevan Shaw
KSLD
Edinburgh, Scotland



Ronald Kurtz
Randy Burkett Lighting
Design
St. Louis

MEMBERS NO LONGER ON THE IALD BOARD OF DIRECTORS: Andreas Schulz, Licht Kunst Licht, Bonn and Berlin, Germany; Paul Beale, Electrolight, Melbourne and Sydney, Australia, and London; Kevin Theobald, GIA Equation, London



Claudio Ramos
Banks|Ramos Architectural
Lighting Design
San Francisco



Colin Ball
BDP
London



Ron Steen (new co-chair)
Specialty Lighting
Industries
Lindenhurst, Ill.



Lucas King
Licht Kunst Licht
Bonn and Berlin, Germany



Jill Cody
DarkLight Design
Seattle
(Cody advanced to membership chair with Victor Palacio's new role of president elect.)



Reiko Chikada
Reiko Chikada Lighting
Design
Tokyo
(Chikada was elected to serve out Jill Cody's term.)

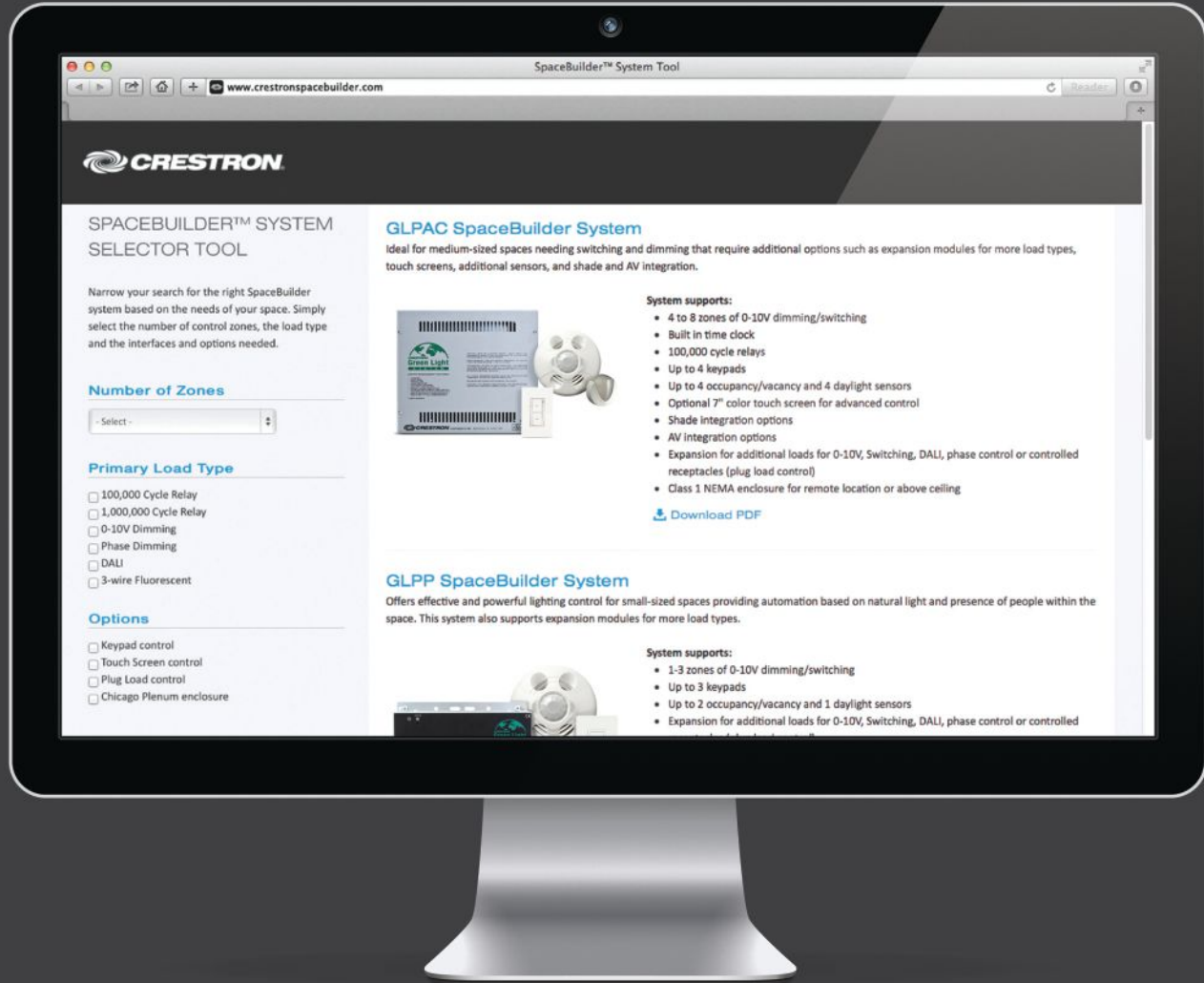


Alexis Arnoldi
Cline Bettridge Bernstein
Lighting Design
New York



Carrie Verkuil
Tivoli Lighting
Tustin, Calif.

SpaceBuilder™



Design Smarter. Design Faster. Design with SpaceBuilder.

Simplify design, installation and startup with Crestron SpaceBuilder™. Just select the number of zones, the load type, and options, and the SpaceBuilder Online Design Tool will help you choose the appropriate SpaceBuilder System for your design. Anyone can now quickly and easily design a lighting control system for all of the spaces in a building.

crestronspacebuilder.com | 855.644.7643

IES PUBLISHES NEW DOCS FOR SSL

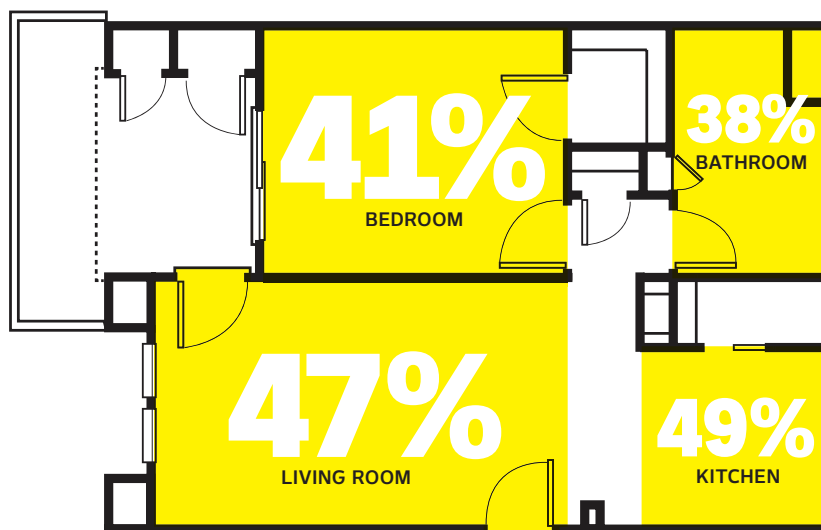
text by Elizabeth Donoff

The Illuminating Engineering Society (IES) has published three new reference documents regarding how various aspects of LEDs perform.

The first document is a technical memo: *TM-28-14: Projecting Long-Term Luminous Flux Maintenance of LED Lamps and Luminaires*. *TM-28-14* is meant to serve as a guide and overview for “sampling, test intervals and duration, and a method for long term luminous flux maintenance projection for LED lamps and luminaires using data obtained when [a] product is tested according to *IES LM-84: Approved Method for Measuring Luminous Flux and Color Maintenance of LED Lamps, Light Engines, and Luminaires* and *LM-80: Approved Method: Measuring Lumen Maintenance of LED Light Sources*.” According to Rita Harrold, IES director of technology, “This standard [*TM-28-14*] is meant to help both manufacturers and users, and standards developing bodies to avoid burdens related to excessive testing by balancing testing time effort and statistical rigor.”

In addition to this guide, the IES has also published two new testing procedures for LEDs: *LM-84-14: IES Approved Method for Measuring Luminous Flux and Color Maintenance of LED Lamps, Light Engines, and Luminaires*, and *LM-85-14: Approved Method for Electrical & Photometric Measurements of High Power LEDs*. These documents help to establish the emerging body of standard and uniform laboratory testing procedures for solid-state light sources. *LM-84-14* addresses lumen decay and color shift, while *LM-85-14* addresses the optical performance of LEDs at higher power levels, which require higher operating temperatures.

All of the documents are available for purchase—in print or as PDF downloads—online from the IES store (ies.org/store). •



LED REPORT REVEALS CONSUMER PAIN POINTS

text by Hallie Busta

Consumers who use LED lamps in their home are satisfied with the light they provide, but understanding the technology remains a challenge, according to a December report commissioned by Osram Sylvania. “Discover LED Lighting” compiles the responses of more than 1,000 U.S. households polled online about their knowledge of LED lamp technology.

“[A]t times, lighting can be very confusing and a bit overwhelming for those outside our industry,” Pamela Price, Osram Sylvania’s retail marketing manager, said in an email. “As lighting leaders, our first task is to make the message relevant and easy to understand. [And] consumers appreciate guidance, but we need to resist the temptation to teach them everything we know about lighting.”

To understand end users’ grasp of LEDs, the company is conducting surveys that address consumer knowledge of the incandescent phase-out and its related issues. Price says the company wanted this latest report to dig deeper into the factors that are both helping and hampering the adoption of LEDs. Among the report’s findings:

RESEARCH: More than three-fourths of those surveyed had not researched an LED lamp’s color temperature prior to purchase; three in five had not researched its brightness. But more than one-third did research a product’s energy use, lifetime, and cost-savings.

GENERAL KNOWLEDGE: More than two-thirds did not associate LEDs with standalone lamps. A majority of survey respondents (51 percent) associated the technology with holiday lights, followed by outdoor lighting (40 percent).

USE: Overall, LED lamps are not widely used in the home. Sites of regular activity—the living room (47 percent) and kitchen (49 percent)—saw more use. Fewer use LEDs in the bathroom (38 percent) and bedroom (41 percent).

SATISFACTION: Of those who do use LED lamps, nine out of 10 were “very satisfied” or “somewhat satisfied” with the technology’s brightness and color. Slightly fewer—seven out of 10—were “very satisfied” or “somewhat satisfied” with the related products’ price. •

www.lgoledlight.com

LG CHEM OLED LIGHT

YOU CREATE, WE LIGHT

OLEDs ON TRACK

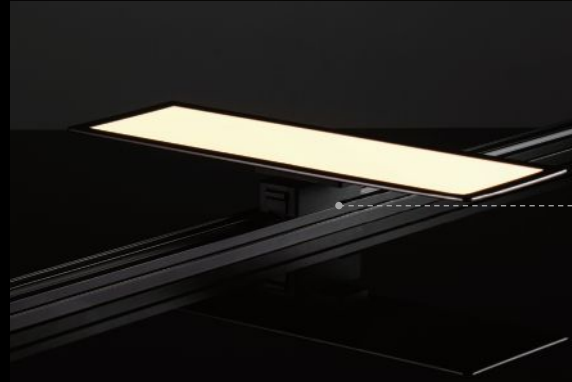
LG Chem OLED light modules
can be directly applied to commercially
available lighting tracks.



One IFC, 10 Gukjegeumyung-ro,
Yeongdeungpo-gu, Seoul, 150-945, Korea
+82 2 3773 3078



Available with
four different
mounting options



FEELUX®

Change your light, change your life.



**LIGHTING UP COMMERCIAL,
RETAIL & HOSPITALITY
AROUND THE WORLD**



HLB Lighting Design | Margulies-Perruzzi Architects

K O R E A J A P A N C H I N A E U R O P E U N I T E D S T A T E S

info@feelux.com | (678) 668-7005 | www.feelux.com

• DESIGN



REPORT

CREDENTIALING UPDATE

Despite the program having completed its beta-testing stage, many lighting designers are still unaware of the initiative's developments.

text by Elizabeth Donoff

Why is the topic of credentialing one of the most debated issues in the lighting community? Because at its very core, credentialing alters processes and procedures that have been in place for more than 40 years. For many lighting designers, many of whom have been in practice for a very long time, this will be a difficult adjustment. In addition, credentialing potentially impacts how one pursues lighting education and it might even require a re-evaluation of

how lighting degrees are offered at the various university-level programs around the world.

But credentialing is not a new issue. It has been part of the conversation about lighting design since the International Association of Lighting Designers (IALD) was formed in 1969. The ebbs and flows of contemporary design practice has seen the issue surface and then retreat a number of times over the past four decades, but the catalyst that most recently propelled the issue on its current trajectory centers around Texas House Bill 2649.

In May 2009, legislation was proposed in the state of Texas that, in essence, would have made it illegal for a lighting designer to practice their craft in the state if they were not licensed. A grassroots, 11th-hour mobilization of the lighting design community worked to make sure that the damaging language was omitted from the final version of the bill. But that experience was enough to make lighting designers seriously examine whether they need to create a credentialing system, and what the ramifications of this system might be, so that the community would not find itself revisiting similar situations in the future.

In 2010, the IALD started the process by establishing an international task force headed by committee chair David Becker, who at the time was director of lighting design at Sydney-based lighting firm Point of View, to examine the feasibility of such a certification program. The committee was made up of IALD members and participants from other lighting organizations and manufacturers, including the Professional Lighting Designers' Association (PLDA), the National Council on Qualifications for the Lighting Professions (NCQLP), and the Lighting Industry Resource Council (LIRC), which is the arm of the IALD that represents manufacturers. (One note: The PLDA is no longer a functioning professional organization; it disbanded in 2014.) While the IALD, as the principal professional organization representing lighting designers, has taken the lead on this initiative, the association has made it clear from the start that this program was not solely for its members, but for all professional lighting designers.

The credentialing task force's initial work involved gathering feedback from the various constituents and clarifying the definitions and differences of key terms that commonly are interchanged in such discussions. The most commonly mistakenly interchanged terms are the difference between licensure and credentialing, and the distinction is a very important one to make. A license allows someone to practice a profession in a particular state and is governed by health and safety issues. Credentialing, on the other hand, is a "method for maintaining quality standards of

knowledge and performance, and in some cases, for stimulating continued self improvement. Credentialing confers occupational identity."

During this initial fact-finding phase, the IALD introduced a series of webinars to inform its members about the issues and gather feedback. It also distributed a survey to get the opinions of those involved, and received more than 600 responses to this initial questionnaire. Armed with all of this information, the organization decided to proceed with the development of a certification program over the next 12 to 18 months. Throughout this process, the credentialing task force enlisted the help of Judith Hale, a certification expert and psychometric consultant and principal of Hale Associates in Downers Grove, Ill.

One of the goals for pursuing the credentialing program has been to avoid legislative bodies establishing restrictions in the future, as Texas threatened to do. Another, equally as critical, purpose has been the validation of lighting design as a profession. As a field that functions in a consultancy capacity to architecture, lighting designers have often felt that they don't necessarily receive the same level of respect that they offer their architecture and engineering colleagues, whose professions do have a licensure system. A credential would serve the purpose of defining, not just for the lighting community but for the larger architecture and engineering community, the specific skills and qualifications that a lighting designer brings to the mix.

"The task force studying the viability of a global credential has observed that if the architectural lighting design community doesn't define the areas in which we practice and measure competency against a validated standard, there is the very real danger that others will force regulations on us or determine our destiny without our control," says Becker on the credentialing program info page on the IALD's website. (Becker is now the chair of the Certified Lighting Designer Commission.) "The alternative is that we make a proactive, unified effort as a global profession to define ourselves by determining the domains of practice and core competencies in which highly sophisticated lighting designers must excel in order to be eligible for certification."

In pursuing this certified lighting designer (CLD) program, a tremendous amount of work has taken place. Here's a breakdown:

2010–2011: JOB TASK ANALYSIS

The IALD credentialing task force commenced a fact-finding initiative examining best practices in the certification industry. They also started a task analysis to define what it is that a lighting designer does. This analysis looked

A credential would serve the purpose of defining, not just for the lighting community but for the larger architecture and engineering community, the specific skills and qualifications that a lighting designer brings to the mix.



THE NEW SHAPE OF LIGHT.

Light cascades from sleek, no-recess-required cylinders. Super easy install, either surface mount or suspended, in wet or dry locations. 3 sizes. Fully integrated, 0-10 dimmable driver simplifies things even further. 361° swivel rotation and 45° tilt lets you put illumination right where you need it. It's a whole new look for light.

luciferlighting.com

PATENTED DESIGN

LUCIFER
LIGHTING COMPANY

CERTIFIED LIGHTING DESIGNER DOMAINS OF PRACTICE

1. GOALS AND OUTCOMES

Demonstrated skill at designing lighting solutions that satisfy project requirements and design intent so the solutions perform as expected.

2. COLLABORATION

Skill at interacting with other disciplines by serving as an integral member of the team so that lighting relates to its context and adds value to a project.

3. INGENUITY

A record of contributing ideas that demonstrate innovation, creativity, originality, or resourcefulness to foster the goals of the project.

4. SYNTHESIS

Demonstrated ability to integrate the technical and aesthetic elements of lighting with space and form.

5. SCIENCE

Showing how light interacts with people, materials, and building systems by applying the principles of light to meet relevant technical criteria.

6. STEWARDSHIP

Responding to known and potential social and environmental impact by designing solutions that avoid or minimize harm, discomfort, or waste.

7. HUMAN EXPERIENCE

Demonstrated ability to design lighting solutions that positively affect people.

Source: iald.org/about/IALDCertificationNews.asp

at international standards for a professional certification program and looked in depth at core competencies of the lighting professional to best ensure that the full scope of a lighting designer's work was taken into account.

2011: DOMAINS OF PRACTICE

From the task analysis emerged a list of core competencies (see "Certified Lighting Designer Domains of Practice" at left), organized into seven domains. Designers seeking certification would need to meet requirements in all seven.

2012: GLOBAL CERTIFICATION SURVEY

To test the validity and defensibility of all this preliminary work, the IALD conducted a global survey to evaluate whether or not the seven domains of practice accurately represent the scope of a lighting designer's work. Responding were 637 building-design industry professionals from more than 36 countries who confirmed that the seven domain were on target.

2013-2014: ALPHA AND BETA STUDIES

With the global certification survey complete, the credentialing task force initiated an alpha study. This limited-member test evaluated the CLD certification to examine whether the application process was clear and workable.

Participants provided feedback and the task force made further modification to the application process. A second-round beta test was started midway through 2013 and completed at the end of 2014. This test was opened up to a wider sampling of lighting design professionals to ensure geographic diversity, gender, length of time working, and size of practice.

The CLD Commission has adopted the work of the certification task force and the aim is to launch the program in early 2015. Learn more at the program's online portal—cld.global.

Professional members of approved lighting design associations will be able to participate—to date, this includes members of the IALD and the Asociación Profesional de Diseñadores de Iluminación, and an approval process is set up to review other design associations. The application fee is \$625, but professional members of approved lighting design associations will receive a discounted price of \$525. Recertification is required every five years.

Like any new program, the CLD is sure to go through growing pains after it is introduced. And while many in the lighting community might still be unaware of what's in store if they chose this certification route, they can be assured that a rigorous process has set it in motion for the program to succeed. •

COME AND VISIT US @ LFI 2015

BOOTH: 2339

LIGHTFAIR
INTERNATIONAL
The future. Illuminated.
2015
NEW YORK, NY USA
Javits Center
PRE-CONFERENCE
May 3-4, 2015
TRADE SHOW & CONFERENCE
May 5-7, 2015

Welcome to JEZETEK
website: www.jiuzhou-intl.com
www.scjz-led.com
E-mail: info@jezetek.cc
tango.jiu@scjz-led.com
Add: No 8 Jiuhua Road, Mianyang, Sichuan, 621000, P.R. China
Jezetek is the owner of jiuzhou brand

JEZETEK
Think, do better



LIGHTFAIR

INTERNATIONAL

The future. Illuminated.

2015

THE GLOBAL LANGUAGE OF LIGHT

LIGHTFAIR.COM

NEW YORK, NY USA

Javits Center

PRE-CONFERENCE

May 3 – 4, 2015

TRADE SHOW & CONFERENCE

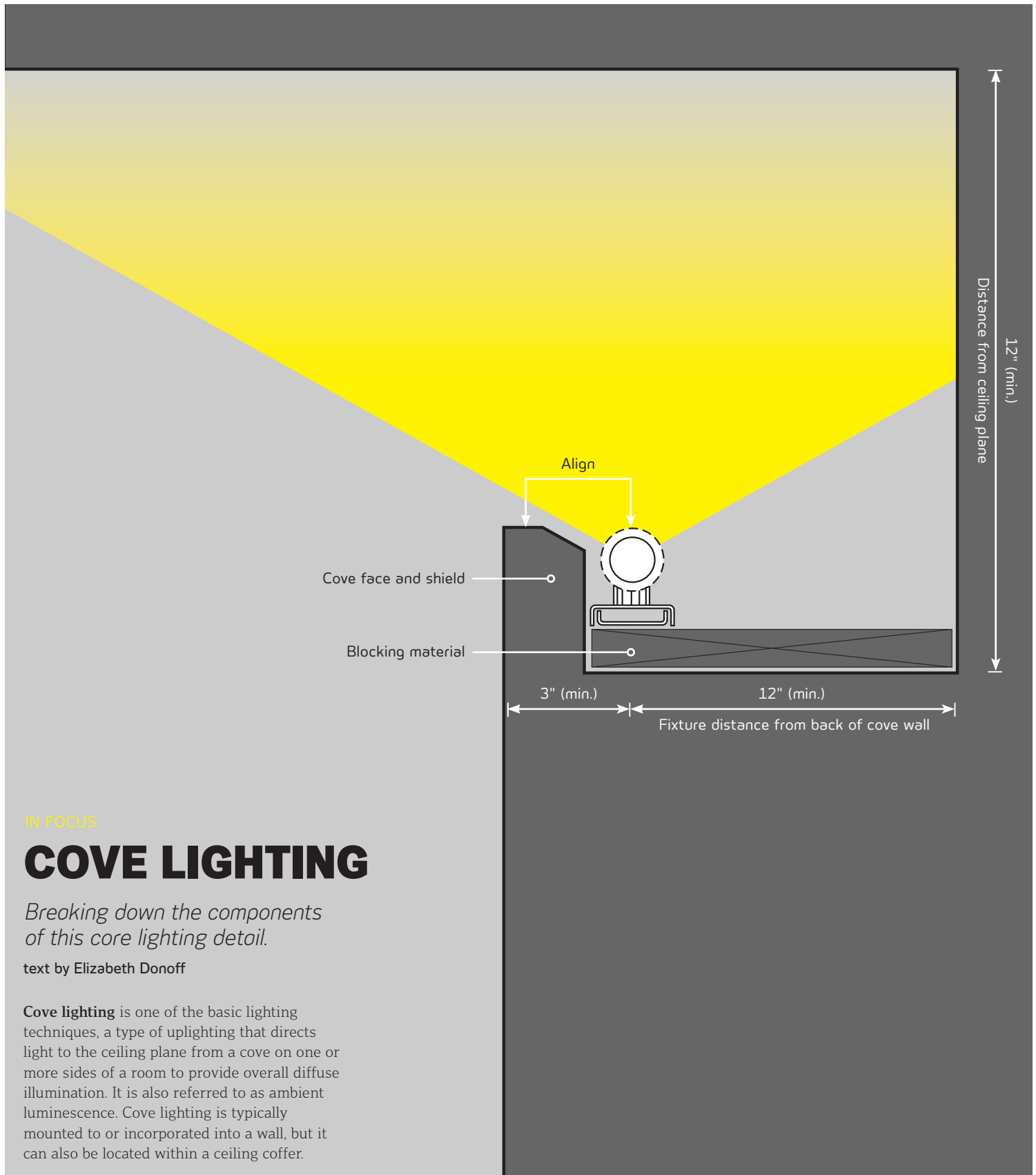
May 5 – 7, 2015



IALD



PHOTO CREDITS
(1) WALL ILLUMINATION FANTASY OF PIOLE HIMEJI,
HIMEJI-SHI, JAPAN | LIGHTING DESIGN: UCHIHARA CREATIVE
LIGHTING DESIGN INC + TAKENAKA CORPORATION |
PHOTOGRAPHY © MASAKI KAWAGUCHI (2) BRANZ KOSHLEN,



IN FOCUS

COVE LIGHTING

Breaking down the components of this core lighting detail.

text by Elizabeth Donoff

Cove lighting is one of the basic lighting techniques, a type of uplighting that directs light to the ceiling plane from a cove on one or more sides of a room to provide overall diffuse illumination. It is also referred to as ambient luminescence. Cove lighting is typically mounted to or incorporated into a wall, but it can also be located within a ceiling coffer.

Illumination for all your Innovative Designs.



Hubbell Lighting brings cutting edge solid-state technology into architecturally styled luminaires. Perfect for relight, retrofit, or new construction, these luminaires deliver a powerful combination of performance, energy savings, and style.



Alera | CVL
Curv Louvered Luminaire



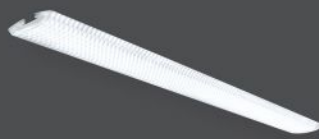
Columbia | LSER
Serrano® LED Architecturally Styled Luminaire



Dual-Lite | LX
LX Series LED Low-Profile Exit Signs



Industrial | HBL
Heavy Industrial LED Highbay



Litecontrol | LWV
Liteweave® Linear LED Pendant



Prescolite | MD8LED
8" High Lumen LED Downlight

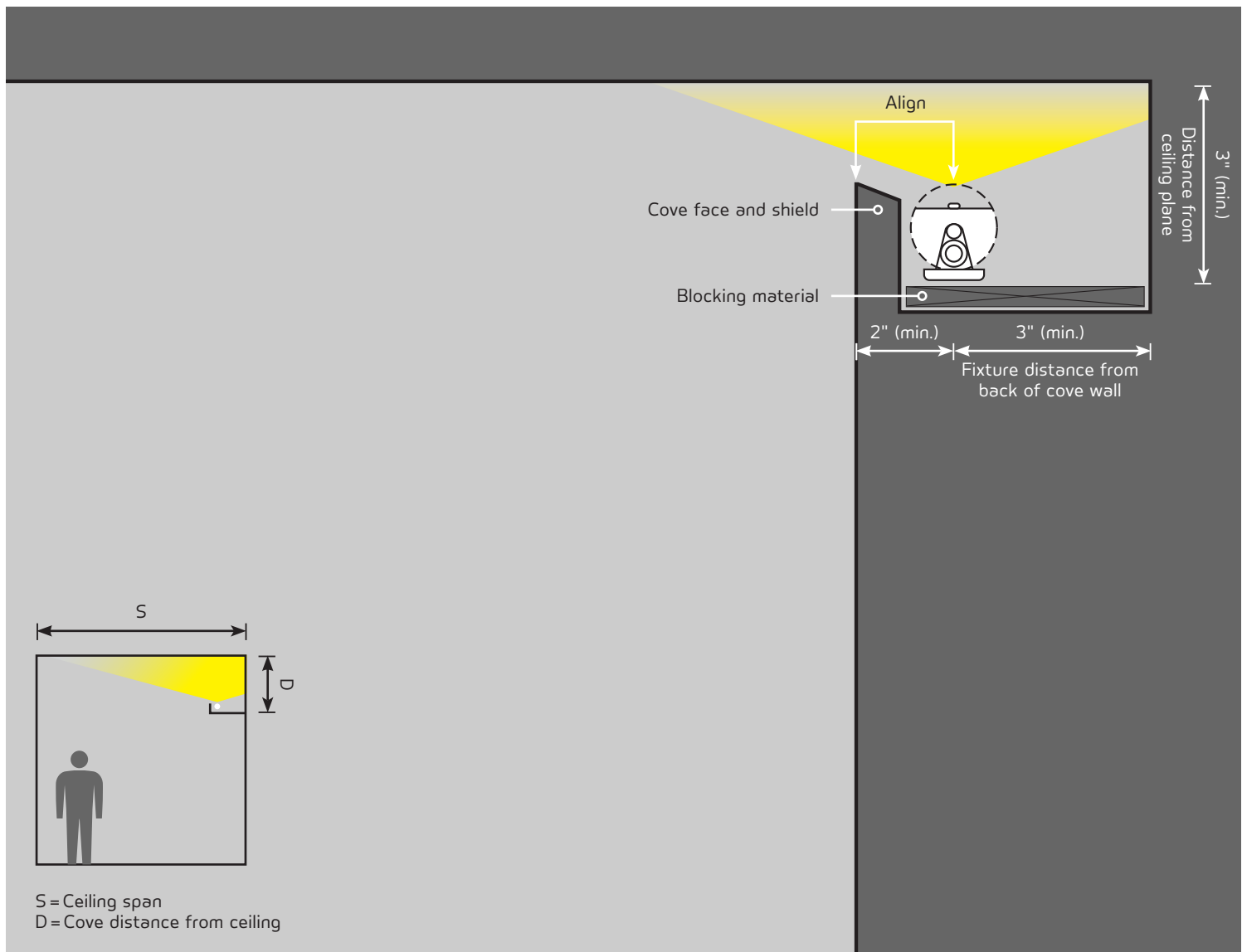
Connect with us through social media and join the conversation! [RSS](#) | [LINKEDIN](#) | [TWITTER](#) | [FACEBOOK](#) | [YOUTUBE](#)



www.hubbellighting.com



Cove Lighting Detail with a Linear LED Array



SOME THINGS TO CONSIDER WHEN SETTING UP A COVE LIGHTING DETAIL:

1. Be aware of how you are positioning the fixtures. Any joints or gaps between fixtures will show up in the light pattern. Socket shadows (dark spots at the end of a lamp) can be eliminated by placing fixtures end-to-end, in a staggered or a slanted arrangement. Depending on source selection, make sure to use the appropriate spacing between fixtures as well as the positioning from the back wall of the cove.
2. The top of the lamp should be level with the cove fascia; if not, it will create shadow lines.
3. To prevent sharp cutoff lines, stop a cove short of the end wall.
4. Generally, ceiling surface should be a high-reflectance matte or satin finish surface. The inside surface of the cove should be flat white. This minimizes specular reflections.
5. As a cove nears end wall, maintain a minimum clearance of 12 inches at inside corners to prevent hot spots.
6. As the cove's distance from the ceiling plane increases, the uniformity of the ceiling brightness will also increase.

REFERENCES

J.E. Flynn and S.M. Mills, *Architectural Lighting Graphics*, Van Nostrand Reinhold, New York, 1962, p. 182–183

M. David Egøn and Victor Olgay, *Architectural Lighting, Second Edition*, McGraw Hill, p. 226–227

Mark Karlen and James Benya, *Lighting Design Basics*, John Wiley & Sons, 2004, p. 59

FINELITE
Better Lighting

Recalibrate Your Expectations. Let Your Imagination Soar.

The award-winning HP-4 LED collection lets you weave light into the built environment with a flexibility that minimizes customization and maximizes your control.



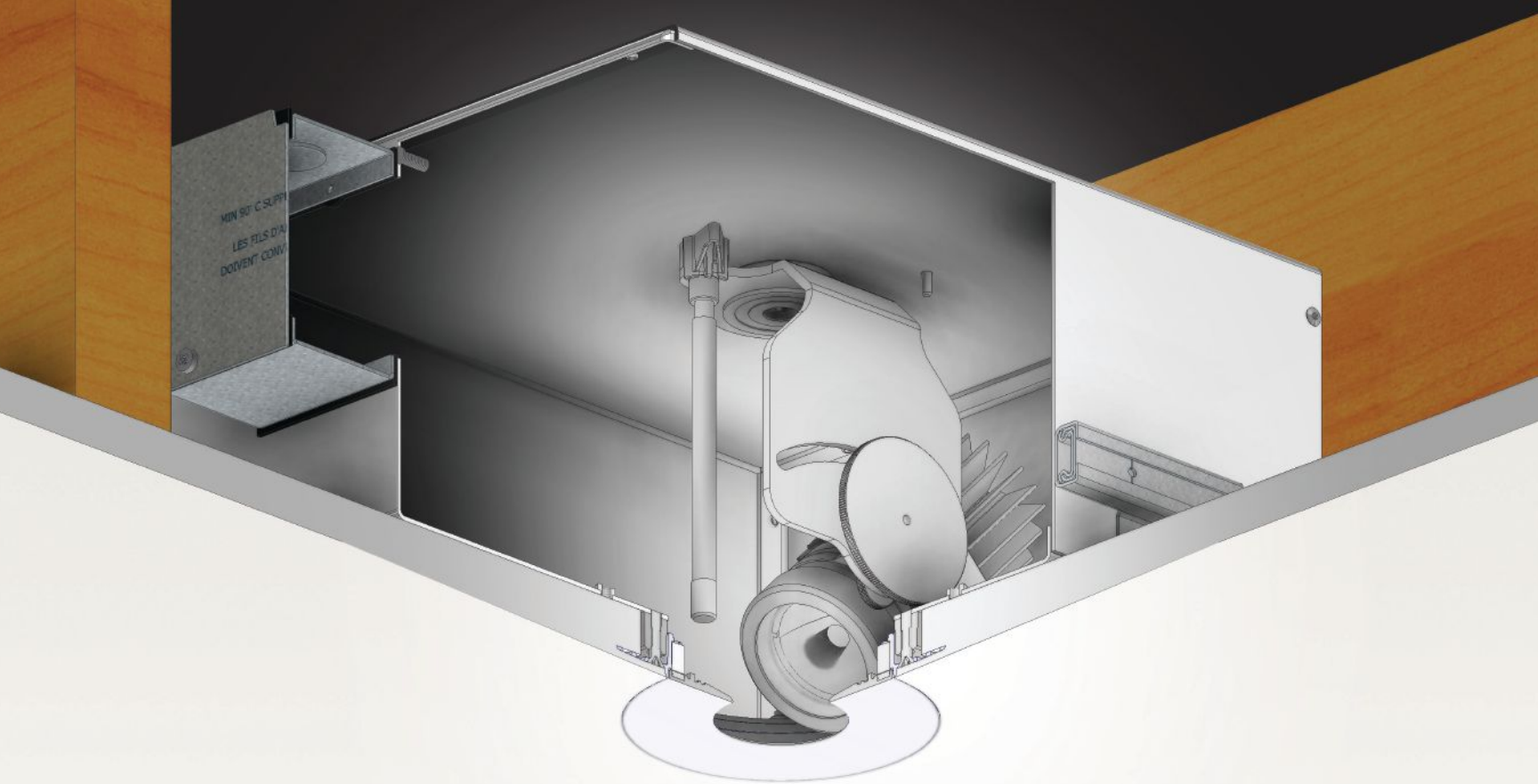
- Pendant, recessed, wall and surface mount
- Standard lengths ship in 10 working days
- Custom lengths and configurations available
- Up to 92 lumens per watt



With The Finelite LED Difference

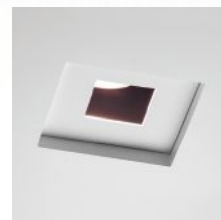
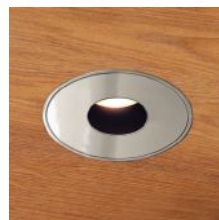
- 10-year warranty on all components
- L90 (90% of initial light output) for 100,000 hours
- Dimming standard
- Replaceable LED light arrays and drivers

Visit www.fineliteled.com for more information



LOOK INTO A SIMPLY SUPERIOR LED

- Beautiful color 95 & 85 CRI
- Higher lumen output delivering up to 1150 lumens
- Improved beam spread options including 13, 15, 25, 40, 70 and 14 x 50 degree
- Smaller, airtight IC housing—rated for spray foam insulation, in single and multi-lamp configurations
- Proprietary reverse-phase dimming driver
- Multi-step binning process with guaranteed maximum variation of 1 x 2 SDCM
- Interchangeable lamp modules (adjustable, fixed, wallwash and mirror reflector)
- Wide array of trims and finishes for almost any ceiling environment



FOR MORE INFORMATION AND TECHNICAL DATA:

8lighting.com

• TECHNOLOGY



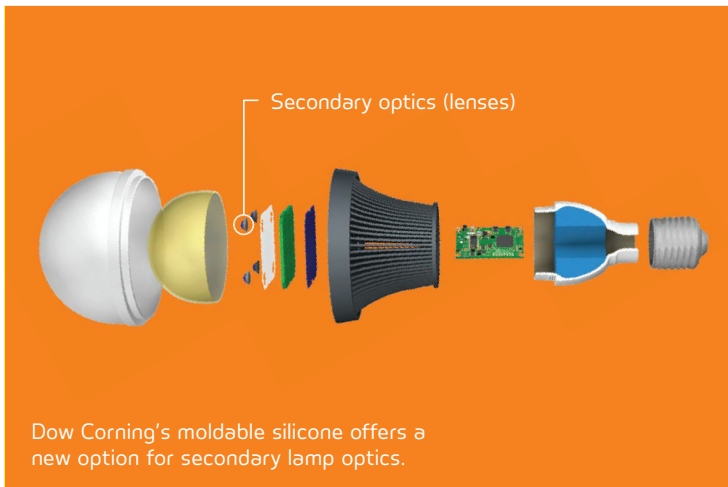
TECHNOLOGY

NEW MATERIALS IN SOLID-STATE LIGHTING

Moldable silicones and other nascent technologies are setting the stage for more freedom in design.

text by Timothy A. Schuler
illustration by Tang Yau Hoong

Lighting designers have long sought to conceal luminaires, illuminating spaces so that an inhabitant notices only the light, not its source. Today, the notion that a luminaire could nearly disappear is closer than ever, thanks to evolutions in material technologies. The trend in LED lighting is toward smaller, thinner, more integrated systems that provide optimized performance but are practically invisible. “Our vision is where the fixture *is* the LED, where you don’t have LED components but where



the whole thing is made as one manufactured piece," says Julian Carey, a senior director of phosphor marketing at Intematix, which makes phosphor materials. Jim Anderson, the director of strategic marketing at Philips Color Kinetics, concurs. "Nobody wants to see the luminaire," he says. "It's been that way forever."

Innovation in the field of LED lighting is currently taking the form of a race to the finish without a clearly marked route. Companies are charting their own course, investing in some combination of new and legacy materials with an eye toward producing the most powerful, most efficient LEDs for the market.

One example of this experimentation is in the development and implementation of substrates, a crucial component of an LED's makeup. Today, companies use substrates made from various compounds, such as silicon, sapphire, polycarbonate, and gallium nitride, but no one material has emerged as the leader. And the same can be said for many of the materials in an LED fixture, from the optics to the light-emitting diodes themselves. "You keep looking for the next generation, and you're either going to add performance or take costs out," says Kevin Dunay, a market segment leader with Bayer MaterialScience.

Increased standardization would allow lighting companies greater flexibility in combining systems. On the other hand, Philips Color Kinetics' Anderson suggests, too much standardization could stall innovation. These conditions aside, research and development certainly isn't flagging. "LEDs are changing every day," says Hugo da Silva, the global

industry director for LED lighting at Dow Corning, whose moldable silicone products have gained traction in the past year.

REMOTE PHOSPHOR

One of the biggest innovations in the past two years has been remote phosphor technology, which separates the phosphor from the diode. Phosphor is nothing new. The light-emitting substance is the basis of glow-in-the-dark toys, and it's been integral to solid-state lighting, typically in the form of a coating that is applied to blue LEDs to turn their light white. The key distinction with remote phosphor technology is that the phosphor material is integrated with the diffuser optic, increasing design freedom while decreasing manufacturing costs.

One company working in this realm is Intematix, which markets remote phosphor under the name ChromaLit. According to the company, remote phosphor can boost efficacy by as much as 30 percent because it effectively captures an LED's spill light, extracting more lumens per blue LED than traditional designs. "The key thing to remember about phosphor is that it produces light [in] 360 degrees when stimulated so you have to figure out a way to reuse that light," Intematix's Carey says. Particularly in linear lighting applications, "remote phosphor very efficiently recycles that light so you have maximum efficiency."

A major challenge for Intematix as they have pursued remote phosphor technologies has been achieving a consistency in color temperature. During initial investigations, researchers experienced subtle variations when

their remote phosphor optic, typically made from a thermoplastic like polycarbonate, was combined with a customer's LED. "The human eye is very sensitive to color changes," Carey says. But with further development, these issues were resolved, and now remote phosphor offers a new way to control color, since hue and temperature now can be manipulated without altering the LED architecture.

"At Lightfair last year, there was a lot of interest from designers for very warm color temperatures for use in architectural lighting," Carey says. "For example, 2400K. That's not something that is easy to accomplish with a white LED. But with remote phosphor, you can just make that color. We dial in the formulation and you can have it."

Remote phosphor has been adopted for applications ranging from undercabinet to high-bay spaces, but cost continues to be a barrier for certain types of luminaires. And manufacturers like Intematix continue to search for even greater efficiencies. Currently, the holy grail in the search for new phosphor materials is narrow-band red phosphor, which would allow manufacturers better access to certain portions of the light spectrum. "This is subject to maintaining CRI, but you can get much more efficiency if you have narrow-band red phosphor, because you're not wasting light in the long portion of the red spectrum," Carey says. "That's one of the industry's priorities."

MOLDABLE SILICONE

While remote phosphor integrates the light source with the secondary optic, optics themselves are undergoing a material revolution. New LED configurations such as chip-on-board designs have resulted in achieving higher, more consistent temperatures than ever before, while the push to reduce costs has manufacturers on the hunt for materials that can be inexpensively produced.

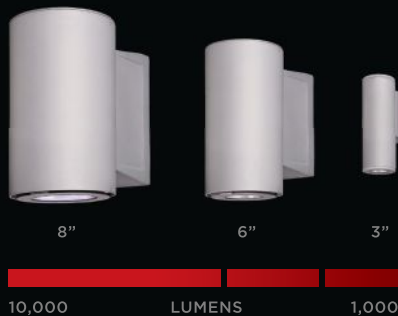
One of the things that LED manufacturers do agree on is the superior thermal and optical performance of glass. At the same time, the demand for ever-thinner materials and for ever-smaller sources has made glass less desirable. As a material, glass is highly inflexible. (We won't even bring up how expensive it can be.) The alternatives, thus far, have been polycarbonate and PMMA (polymethyl methacrylate).

Polycarbonate is a type of thermoplastic polymer that enjoys a certain ubiquity in the modern world (the plastic case for Apple's iPhone 5c, for instance) and is equally versatile in the solid-state lighting industry. Makrolon, a polycarbonate manufactured by Bayer MaterialScience, can be injection molded into reflectors or secondary optics for LED lighting.

Various mounting options.



Scaled to fit anywhere.



SYRIOS LED

Timeless on the outside,
reinvented on the inside.

THE NEW FAMILY OF HIGH PERFORMANCE EXTERIOR LUMINAIRES

Unique adjustable lamp module (6" and 8" versions) for precise directional aiming.
Fully dimmable (0-10V). RGBW versions with DMX control available.

luminis.com

LUMINIS®



Bayer also makes Makrolon diffuser sheet products that have become popular in troffers. But polycarbonate does have its limitations, especially as LEDs get smaller. "You can only thin walls so much," says Bayer's Dunay.

Enter moldable silicone. In the hierarchy of materials, silicone is second only to glass, says Dow Corning's da Silva, who is an expert in lighting and electronics and an evangelist for his company's line of moldable silicone products. "Silicone combines the proven properties of plastics and the good properties of glass," he says.

From a performance perspective, moldable silicone withstands high temperatures, high levels of ultraviolet light exposure, and high lumen densities. But its stability with different wall thicknesses is perhaps its greatest advantage over polycarbonate, and this advantage allows for greater design flexibility, especially when it comes to details that require undercuts, micro optical features, and negative draft angles. "At the end of the day, designers [have more freedom] to design with silicone than they [do] with any other material," da Silva says.

Moldable silicone has gained a tremendous amount of momentum in the past year-and-a-half as manufacturers grasp the material's potential. "A lot of people believe that moldable silicone can completely take over the optic materials [industry]," da Silva says. "Being more realistic, I believe silicones can have a fair share of the market, maybe 20 to 30 percent. Today, it's not even close to that."

GALLIUM NITRIDE SUBSTRATES

At the micro level, the diode itself is evolving. Innovation at this scale has the farthest-reaching implications, since luminaires often contain dozens of LEDs. So if each diode produces more light at a lower cost, lighting companies see substantial benefits.

First-generation LEDs all used some combination of gallium nitride (GaN) and a substrate made of a different material. Those substrates were made from glass, silicon, silicon carbide, and sapphire. In recent years, however, several companies, including Soraa and Panasonic, have experimented with making the substrate out of GaN as well. Using the same material for both layers creates a much more reliable diode, even when running at incredibly high power densities.

This advantage was not unknown to most LED manufacturers, but the cost of GaN has been prohibitive. "The notion of using a GaN substrate like we do was considered crazy by most people because the substrates were on the order of 100 times more expensive than sapphire substrates," says Mike Krames, chief technology officer for Soraa. "Even when I was

at Philips 10 years ago, we all knew that GaN substrates would be developed for lasers, but we couldn't convince ourselves you could ever develop an LED system on it."

Krames, however, was soon persuaded. "When talking to the founders after first joining Soraa," he says, "I realized that if we could develop an LED system that could operate at 10 times the power density, then you'd have a huge lever on cost because the substrate is only about one-tenth of the cost of the LED. The rest of it is all in the downstream fabrication. So if I can use 10 times less LED material, I can afford to pay about 10 times the price per square area of the substrate. And since I only need one-tenth of the area of the substrate, I can afford to pay about 100 times the price of sapphire."

GaN-on-GaN has also made possible full-spectrum LEDs that include violet emission. Until now, that's only been a pipe dream. "Violet-emitting LEDs do not tolerate the lower quality of GaN-on-foreign-substrate," Krames says. Blue LEDs create light that appears white but, unlike [the] incandescence of sunlight, is not full-spectrum because it lacks violet emission. By adding violet and harnessing the full spectrum, LEDs will be one step closer to imitating natural light.

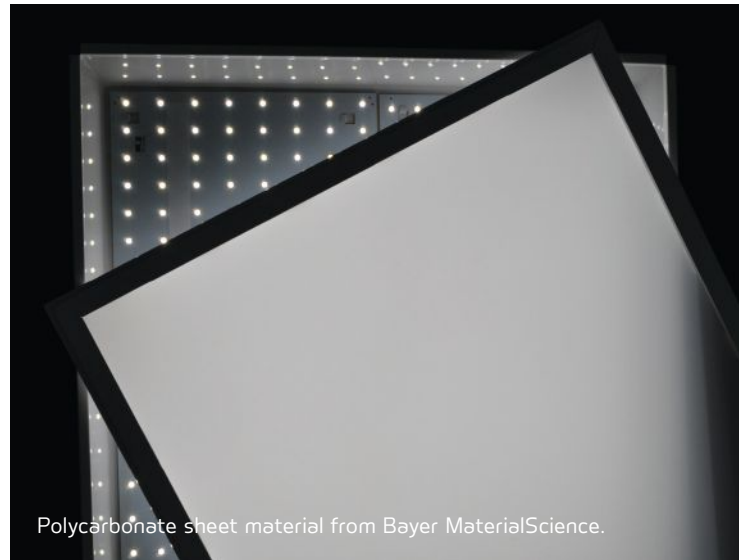
Like several other LED companies, Soraa is vertically integrated. It oversees the manufacturing process from the fabrication of the LED to the assembly of the lamp. This helps drive down costs and is, in part, what

allows the company to leverage its GaN-on-GaN technology. But Soraa's not alone. Other companies seem to be confident that the math for GaN-on-GaN pencils out. Panasonic has invested heavily in making LEDs on GaN substrates, and late last year the company unveiled an automotive headlight that uses the technology. Although automotive applications differ substantially from architectural lighting, the release of the GaN-on-GaN product could mean Panasonic is moving in that direction for all of its LED products.

THE RATE OF ADOPTION

LEDs have evolved so quickly that material innovation has struggled to keep up. But in many ways, today's technologies already have the power to transform the lighting industry. And now it is the industry itself, Dow Corning's da Silva says, that is lagging behind. LED lamps, for the most part, continue to be designed to mimic existing lamp form factors, and da Silva sees the romanticism of outdated technologies as a fatal flaw, noting that his company has run up against this misplaced nostalgia as it has marketed its moldable silicones. "It's been a journey the last four years to [create] new technologies that bring a lot of flexibility under the same technology umbrella," he says. "The challenge is how conservative the industry is."

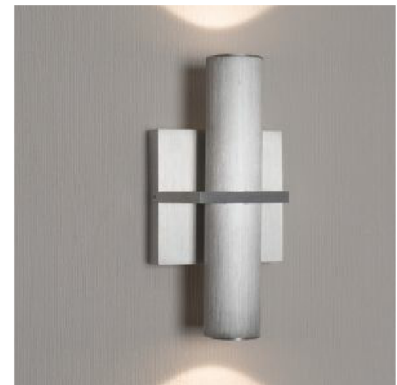
Philips Color Kinetics' Anderson, however, argues that while the average consumer may be attached to the shape of the incandescent lamp,



Polycarbonate sheet material from Bayer MaterialScience.

ARCHITECTURALED

LED WALL SCONCE



The ArchitecturalLED series of wall sconces are contemporary accent lights that will bring out the architectural character of any location. The series boasts a design that integrates high performance LED technology with a modern style wall sconce suitable for commercial and hospitality applications.

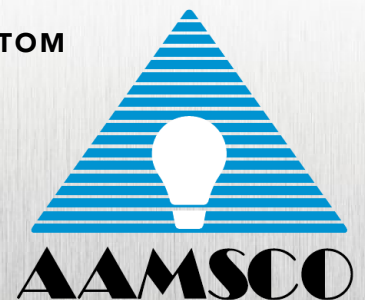
If you are looking for excellent quality LED wall sconces, Aamsco Lighting's outstanding ArchitecturalLED series can help you improve the appearance of your next project. We can provide you with innovative lighting solutions.

COMMERCIAL | HOSPITALITY | RETAIL | RESIDENTIAL | CUSTOM

AAMSCO LIGHTING, INC.

100 Lamp Light Circle • Summerville, SC 29483
1-800-221-9092 • Fax 843-278-0001 • www.aamsco.com

Visit us at Booth 3532 at LightFair



DIALux evo



Design lighting for entire buildings? Now you can.

With DIALux evo you can design lighting intuitively for complex spaces.

Learn more about its smart features and unique business model: DIALux is free for commercial and private use.



discover.dialux.com

the architectural lighting community is much more willing to try new technologies in order to get the effects it wants.

Anderson is part of the LED Systems Reliability Consortium, a committee of the Next Generation Lighting Industry Alliance (NGLIA). A white paper from NGLIA, in conjunction with the U.S. Department of Energy, first released in 2011 and updated this past September, and titled "LED Luminaire Lifetime: Recommendations For Testing And Reporting," proposed an accelerated verification process for new technologies in order to spur faster innovation. The proposal is modeled on what's used in the electronics industry. LED lighting, Anderson says, could be treated the same way, removing the inertia that comes with a validation process that requires 3,000 to 6,000 hours of testing.

This shift would be momentous—and symbolic. Early on, LEDs overpromised and underdelivered when it came to lighting performance. Manufacturers entering the lighting industry from the electronics world had little understanding of the unique and nuanced requirements of architectural lighting. But that is changing. "What people claim compared to the actual performance has significantly improved," Anderson says. "There's a better match there. The industry is maturing." •

RESOURCES

A list of reference sources that address LED materials.

Next Generation Lighting Industry Alliance, LED Systems Reliability Consortium, "LED Luminaire Lifetime: Recommendations For Testing And Reporting," Updated in September 2014, 1.usa.gov/1Bp4QsV

Ludwig Maximilian University of Munich, "LED Phosphors: Better Red Makes Brighter White," *ScienceDaily*, June 2014, bit.ly/195t6qY

Michael J. Cich, Rafael I. Aldaz, Arpan Chakraborty, Aurelien David, Michael J. Grundmann, Anurag Tyagi, Meng Zhang, Frank M. Steranka, and Michael R. Krames, "Bulk GaN Based Violet Light-Emitting Diodes With High Efficiency at Very High Current Density," *Applied Physics Letters* 101, 223509, American Institute of Physics, November 2012, bit.ly/1CVGFpc



#IntenseABILITY - 048

ADAPTABILITY

MX Adaptable by design. The retail optimized MX family is available in vertical or horizontal track, canopy, and recessed multiples. MX downlight and wall wash coming Q3 2015.



MX



MXH



MX Multiple



Scan the QR Code to learn more about MX.

Intense Lighting | Anaheim, CA
Visit us at www.IntenseLighting.com



Vist Intense at LightFair
May 5th to 7th, Booth No. **356**
Javits Center in New York, NY

PRODUCTS

OLED UPDATE

text by Hallie Busta

On paper, organic light-emitting diodes (OLEDs) are a designer's dream. Thin, flat, cool, diffuse, and nearly glare-free, the modular light panels can be used to form fixtures or be embedded in walls, furniture, and even textiles. But an OLED-only future is unlikely—and that's not necessarily a bad thing. According to the U.S. Department of Energy (DOE), OLED panels currently cost an average of \$500 per thousand lumens, or kilolumen (klm). To be commercially viable, that figure would need to decrease to \$20 per klm by 2020, the DOE says. That's compared to LEDs, which according to DOE figures are expected to cost \$2 per klm by 2015, having dropped from \$18 per klm in 2010.

Recently, ARCHITECTURAL LIGHTING spoke with OLED experts to get their take on the leading drivers and impediments to this diffuse light source's adoption. Though cost and performance remain the leading barriers, the experts cited another hurdle that, in tackling, they think can help make OLEDs marketable: lack of exposure among designers. To turn that around, the lighting industry is developing new fixtures and furthering research and development that will help lighting designers and architects better understand where OLEDs fit in as a lighting option, and where they don't.

"We have to get people to understand that OLEDs are not a factor today but [they will be] tomorrow, so try to learn what you can do with OLEDs so that you are prepared when [they do come to] market," says Dietmar Thomas, Philips' manager of brand and integrated communications for OLED.

Here's a snapshot of where OLEDs stand in the market today.

BIG-BOX BARGAINS

In December, Acuity Brands announced that it would begin selling two OLED fixture families in the U.S. through the Home Depot's online store and in select locations starting in early 2015.

Panel and fixture makers are developing luminaires that show off the potential for the still-niche technology.

Aerelight

A photograph of a modern, minimalist light fixture. It features a long, thin, dark-colored arm that extends from a square base. The arm is angled upwards and then bends at a right angle to become horizontal, ending in a thin, glowing light strip. The base is a square, dark-colored platform with a lighter, textured surface in the center. The background is a plain, light-colored wall.



INTERNATIONAL

The future. Illuminated.

2015

Booth #1239

TruLine .5A Plaster-In LED System

Create dynamic, unexpected architectural lighting accents with the award-winning TruLine .5A from Pure Lighting. TruLine blends seamlessly into 5/8" drywall without joist modification, vanishing into the architecture to become one with the environment. Only a clean line of light shines through, allowing for horizontal, vertical, diagonal or geometric runs across multiple planes. The dimmable plaster-in LED system delivers 95+CRI performance and enlightened design.

Let the Drywall be Your Canvas

Pure
LIGHTING
www.purelighting.com



Aedán Pendant

The luminaires, says Jeannine Fisher Wang, director of business development and marketing for Acuity Brands' OLED Business Group, are meant to "explore the creative aspects of OLED" in residential spaces while giving consumers an easily installed "luminaire-in-a-box." Offered in a pendant and a sconce, the Aedán luminaire comes in 3000K and offers 68 lumens per panel. Chalina, which is available as a pendant, a sconce, or a ceiling-mounted fixture with five panels per module, comes in 3000K with a total output of 345 lumens. Both fixture lines are currently retailing online from \$199 to \$299.

TAKING ON TASKLIGHTS

Acuity Brands isn't alone in creating consumer-focused OLED fixtures, in part due to the lighting industry's recognized need to get the technology into end users' hands. But the forms that these initial fixtures are taking reflects OLED's current scale, says Michael Helander, president and CEO at Toronto startup OTI Lumionics, which develops OLEDs for lighting and displays and is piloting the manufacture of panels for small-scale, small-volume projects. Current OLED performance, coupled with the technology's cost, suits a smaller form factor, he says. Plus, decorative tasklights are ubiquitous. The company's Aerelight (shown on the previous page), which was born from the desire to test its OLED research and development with consumers, offers a thin form factor, 2900K, and consumes 7W.

CUSTOMIZATION

OLEDs are also being used for custom lighting solutions. Bruno Dussert-Vidalet, co-founder of French OLED maker Blackbody, argues that while the production and sale of consumer-



Flying Ribbon

grade fixtures are "a way to stimulate the market," the essence of the technology is in its ability to be customized. "OLED is a greenfield," he says. "It's not an evolution of technology. It's a new way to light your home and the space." The company's 5,382-square-foot showroom in New York City, which opened in the fall of 2013, shows the myriad ways in which OLEDs can be used to illuminate or accent a space. But for all its whimsy, even Blackbody offers replicable designs. Its Flying Ribbon, which was designed in February 2012 for use in a corporate client's conference room, features a pre-designed configuration that the company has since used as a blueprint when iterating the product for other spaces. "Your ribbon can be adapted [not only] to your space but also to your budget and your taste," he says. The fixture measures 12 feet long by 1.2 feet wide, and provides 2750K to 4000K with a CRI of 80.

BETTER-PERFORMING PANELS

Panel makers are pushing for OLEDs to reach performance levels (and panel sizes) suitable for general illumination—according to the DOE, current OLED panels offer efficacies of 60 lumens per watt and CRIs greater than 90. Karsten Diekmann, senior manager of



Orbeos OLED Panel

marketing, product and application engineering for Osram's OLED business, explains that the company's first generation of Orbeos OLED panels, introduced in 2009, had a light output of 25 lumens per watt with a brightness of 1,000 candelas/m². Today, Osram makes OLEDs, such as the Orbeos SDW-058+ panel (shown above), at 65 lumens per watt and 3,000 candelas/m².

There's still work to do, however. OLEDs need to be able to compete performance-wise with LEDs. "When OLEDs reach 100 lumen-per-watt values, they get really attractive for general lighting applications," Diekmann says. "Such values have been presented on the R&D level and need to be transferred into production."

This past fall, Seoul-based LG Chem announced that it had developed a 100-lumen-per-watt panel that will be commercially available in April, helping OLEDs enter the general illumination space, said Chang-Hoon Jeong, head of marketing for the company's

OLED light division, in an email. In January, the company followed up on that news with the debut of a widely available 0.88-millimeter-thick, 320-millimeter-by-320-millimeter panel offering 60 lumens per watt with a CRI of 90-plus. The company also announced that it had developed a flexible OLED using a plastic substrate and, it claims, without diminishing either efficacy, luminance, or CRI. "Due to our experience in barrier and encapsulation techniques, it was possible to achieve the same [performance] level [as with a glass substrate], even with a plastic substrate," Jeong says.

NEW FACES

Today, OLEDs are primarily decorative—due to their small scale and limited uptake—but that could soon change. Philips' Thomas and others suggest a future for embedded OLEDs in applications including undercabinet lighting and retail displays. Later this year, Philips expects to launch its Brite FL300 L, which offers 300 lumens from a lit area measuring about 8.7 inches long by 1.8 inches wide. The product is a longer, more slender version of the company's 3000K, 4.7-inch-square Brite FL300 ww, which offers up to 50 lumens per watt. Acuity's Wang says that the Nomi family of OLED sconces



Nomi OLED Sconce

from Acuity Brands/Winona Lighting, which was previewed at Lightfair 2014 and will come to market this spring, features a bendable glass substrate that helps achieve its contemporary form. And LG Chem says it plans to showcase an OLED track fixture in the coming months.

By designing luminaires that show off what OLEDs can do, manufacturers hope to awaken lighting designers, architects, and even consumers to the technology's potential. "One OLED panel doesn't really generate a lot of light," Wang says. "It's hard for people to visualize that you can, in fact, light a whole room using an OLED lighting system. It's kind of wrapping your mind around some different possibilities." •

THE NEXT REVOLUTION IN ADVANCED LIGHTING SOLUTIONS

**SUPERIOR PERFORMANCE.
IMMEDIATE ENERGY SAVINGS.
RAPID ROI.
REVOLUTION LIGHTING TECHNOLOGIES.**

For the next evolution in lighting technology solutions, trust Revolution.

LUMificient[™]
CORPORATION

Sentinel
System.

VALUE
LIGHTING



RVLT
Revolution Lighting Technologies

177 Broad Street 12th Floor
Stamford, CT 06901
ph 203.504.1111 fx 203.504.1150

rvlti.com



Signcomplex | We bring innovation and give inspiration

Which kind of tri-proof lamp are you looking for?

Welcome to ArcS™ Tri-proof lamp

- Unique design?
Patent design from Signcomplex. 230° large beam angle to replace fluorescent tube.
- Can be corrosion-proof, water-proof, dust-proof, impact-proof?
Yes, all are available.
- I need high efficacy.
Our tri-proof lamp is up to 110lm/W.
- Which kinds of power and length can you provide?
We provide 10-80W, and length 1.5m, 1.2m, 1m, 0.6m.
- Any more characteristics?
Fire-resistant material, 850°C glow wire test; IK10 impact-proof test.
- Certificates?
UL, DLC, TUV, SAA and RoHS compliant.
- Can provide emergency tri-proof lamp?
Available.
- Available with 0-10V and DALI?
Yes.
- Hmmm, any more? Let me think.
OK, please feel free to tell us.



Signcomplex Limited
www.signcomplex.com
marketing@signcomplex.com
phone: +86 755 2760 8650
fax: +86 755 2760 8651



2015

NEW YORK, NY USA
Javits Center

Date:
5-7 May 2015
Booth No.:
4457

The future. Illuminated.



**Hong Kong International
Lighting Fair (Spring Edition)**
Hong Kong Convention and
Exhibition Centre

Date:
6-9 April 2015
Booth No.:
1C-E01





Aesthetics and performance
Fluorescent & LED

CENTERA™
fully luminous series

Centera™ high transmission luminaires offer unique and modern design, showcasing a stunning, fully luminous panel. An offering of six combinations of center and side panels gives designers numerous options to create unique looks.

design friendly

energy friendly



Premium direct luminaire
Fluorescent & LED

ALTUS+™

Altus+™ is available with either our exclusive wide aperture perforated metal baskets or high transmission lenses, and provides outstanding illumination from a tightly engineered, energy-driven, and architecturally-minded platform.

Simkar is proud to offer two new families of classically-inspired luminaires

Designed to blend harmoniously in many environments, Centera and Altus+ provide the reliability, stringent performance, and design options desired for the requirements of contemporary commercial lighting projects.



For more information, visit
www.simkar.com/led
or call 800 239-5267

SIMKAR
CORPORATION
Progress and Innovation

TORSHARE 拓享
LED Commercial Lighting Expert | LED 商业照明产品专家

To green the earth, to share the glory

A Leading Manufacturer of LED Lights In China

Where there is
LIGHT
There is
TORSHARE



Torshare Ltd

Add : Bao'an District, Shenzhen,
Guangdong, P.R.China
Tel: +86-755-29833929-820
Fax: +86-755-29833930
E-mail: sales@torshare.com
www.torshare.com






AIA Convention 2015: May 14-16, Atlanta

Get on the A-list! Visit aia.org/convention





THE SKY IN THE SUBWAY

*James Carpenter Design Associates, Grimshaw, and Arup
design a giant daylight reflector that draws eyes to the sky.*



text by Gideo Fink Shapiro

images by James Ewing/OTTO

In George Tooker's famous 1950 painting *The Subway*, a woman navigates a claustrophobic, disorienting space filled with shadowy figures. The artwork perfectly represents "perceptions of compression, anxiety, [and] unease that accompany being underground," says Vincent Chang, a partner at Grimshaw's New York office. And until recently, this is exactly how it felt to trudge through a certain maze of dark underground passages that linked nine subway lines in Lower Manhattan just east of the World Trade Center site.

This site is Fulton Center, where a new transportation and retail hub opened this past November after more than a decade of work, and the new project reflects an altogether different vision of public transportation—a vision inspired, Chang says, by the soaring vault of Grand Central Terminal, which is pierced by oblique rays of sunlight. Among the many improvements to the Fulton complex, the most visible is the new "headhouse" building designed by Grimshaw with Arup, who oversaw work on the entire complex. For starters, there is a generous skylight, 53 feet in diameter and positioned 120 feet above street level, that allows daylight to reach all the way to the subway platforms underground.

But the space does more than just transmit natural light through an opening; it collects a larger view of the sky's changing conditions. This is thanks to Sky Reflector-Net, a 79-foot-tall tensile structure suspended inside the conical atrium. The combination sculpture-daylighting device was conceived by artist James Carpenter, who then collaborated with Grimshaw and Arup to fine-tune it and integrate it with the architecture and engineering. Composed of a steel cable net and 952 perforated, folded aluminum panels, it drives light deep into the cavernous space. At

the same time, it draws the eye up to a luminous field of blue-gray tones. And for good measure, it conceals the hulking mechanical infrastructure. Carpenter likens the perceptual effect of the net to "folding the sky down into the station."

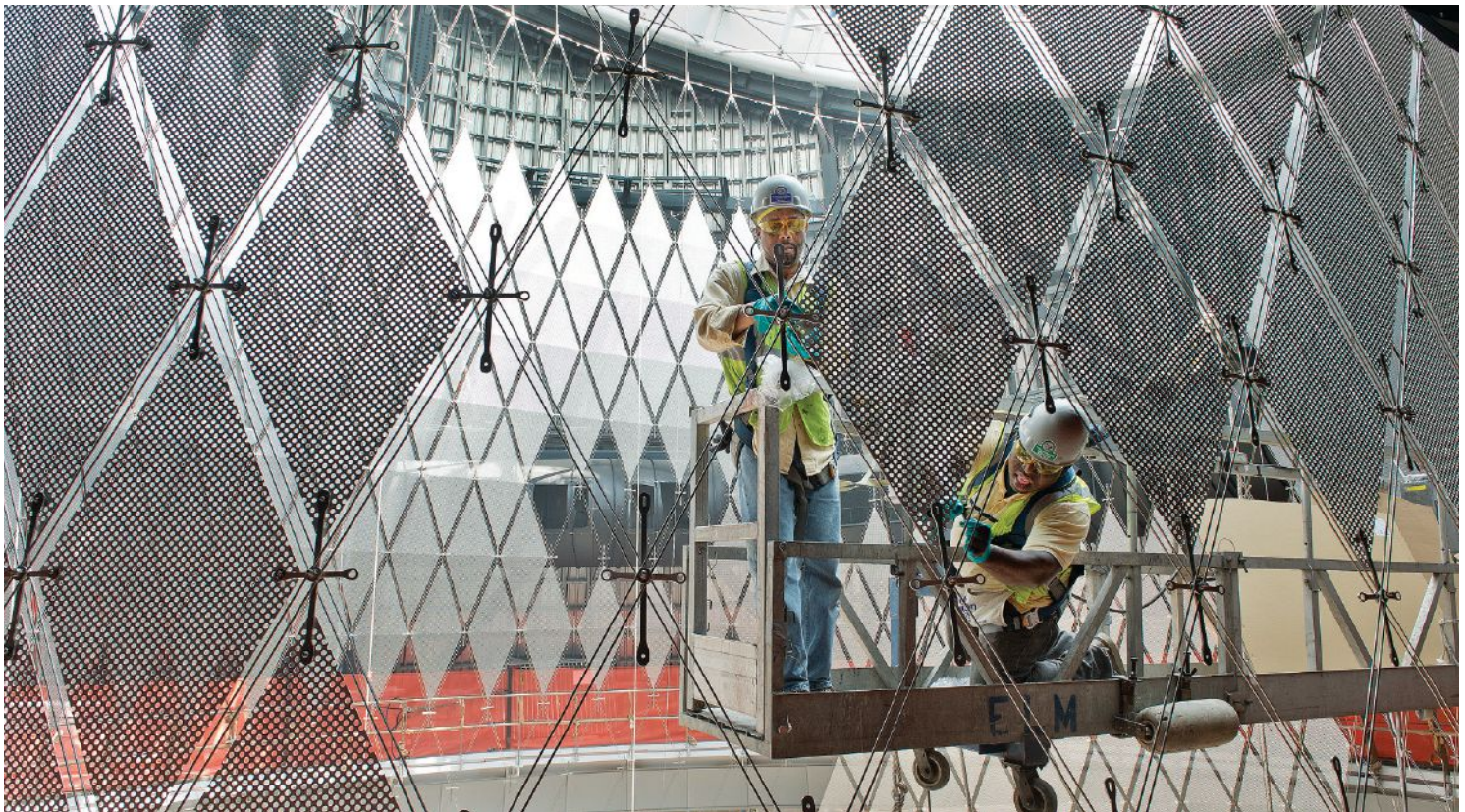
The artist has built his career on meticulously detailed installations that enrich the play of light and environmental phenomena in architecture. The work of his office, James Carpenter Design Associates (JCDA), frequently makes it difficult to separate art from architecture, engineering, and lighting. Sky Reflector-Net is no exception.

In 2004, JCDA won a competition sponsored by the Metropolitan Transit Authority's Arts and Design program to design a large-scale, light-harnessing installation for the future Fulton Center. At the time, the transit hub was supposed to have been topped with a glass dome. Historically, domes have been decorated with artistic representations of the sky and its associated mythology. Even the ceiling of Grand Central Terminal's Great Hall (while not a dome, it is an important precedent) is modeled with gold constellations and zodiac signs against a deep blue-green background, like a summer twilight sky. Carpenter thought of the Fulton Center commission as an opportunity to connect urban dwellers with the sky in a different way: not through pictorial representation, but through the play of daylight on a reflective surface, providing "a heightened experience of the sky and the mutable presence of light," he says.

Even when daylight is monochromatic—say, on a cloudy winter's day—Sky Reflector-Net creates a gradient of luminosity and tone. Each constituent panel is CNC-cut to a slightly different shape and size, and each has a different angle of exposure to the oculus and a different degree of opacity, which is a factor

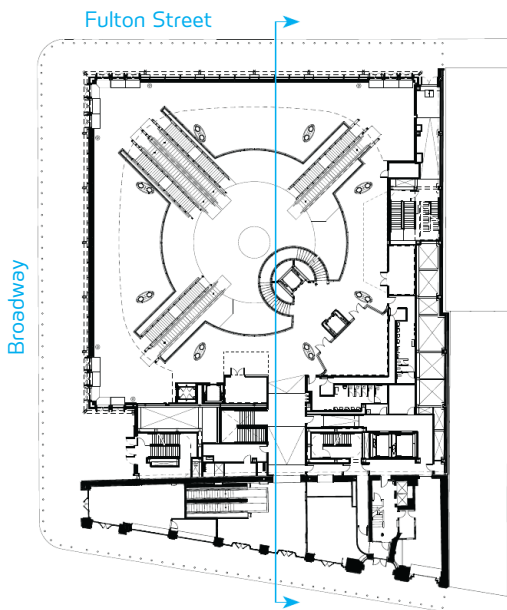
Sky Reflector-Net, a 79-foot-tall sculpture, harnesses natural light and brings it deep into the Fulton Center in Lower Manhattan (previous spread). A soaring sense of space and endless light fills the main atrium, lifting one's eye up to the sky (opposite).



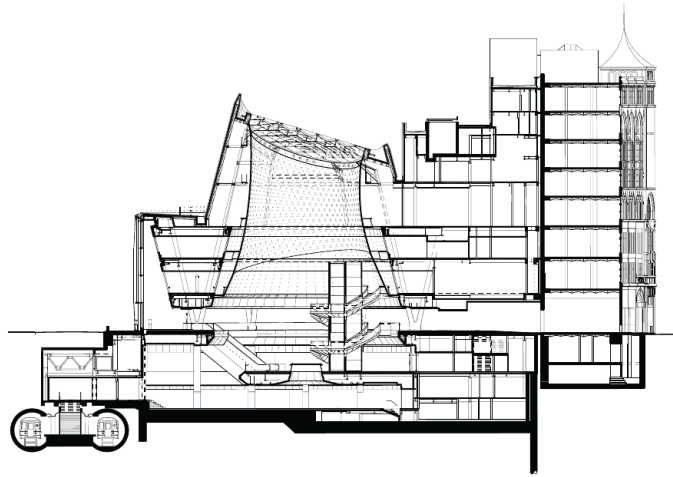


Bottom: Patrick Cashin

Street Level Plan



Longitudinal Section



The entrance to the Fulton Center sits at the corner of Broadway and Fulton Street in Lower Manhattan (opposite top). The new transportation hub serves up to 300,000 commuters a day who travel on nine different subway lines. The Sky Reflector-Net is composed of 952 perforated aluminum panels, each hung from a stainless steel cable net and uniquely shaped and positioned (opposite bottom).

of each panel's perforation. The panels nearest the bottom of the sculpture are the most perforated—48 percent open overall—and the size of the perforations grows smaller with each subsequent row of panels, so that the uppermost panels are only 20 percent open overall. The top of the sculpture thus appears brighter because its panels face the sky more directly so that it reflects more light, and it is nearest the skylight. Viewed from below, all that punched metal looks positively gauzy, holding the sky in a kind of embrace, more like a cloud than a building.

The perforations came about in response to a functional requirement. Sky Reflector-Net had to be designed so as not to obstruct the building's smoke evacuation system, says Arup associate and lighting designer Matt Franks, who worked on the project from its beginning in 2003. Air passes through the reflectors as through a screen or a vent. "It's not a hermetic shell, so it doesn't hamper operations," Franks says. Enormous air extract ducts—"almost large enough to stand up in," Chang adds—are hidden conveniently behind the net. It's a perfect example of technical performance overlaid with aesthetic intent.

The view from behind the cable structure matters too, or at least it does to the retail tenants who will occupy the glass storefronts on the mezzanine that overlook the atrium. This, Chang points out, is another reason why Sky Reflector-Net is most porous and translucent toward the bottom, so that it screens—but does not block—the light and the view of the skylit atrium. The retail spaces also enjoy a glazed exposure to the exterior.

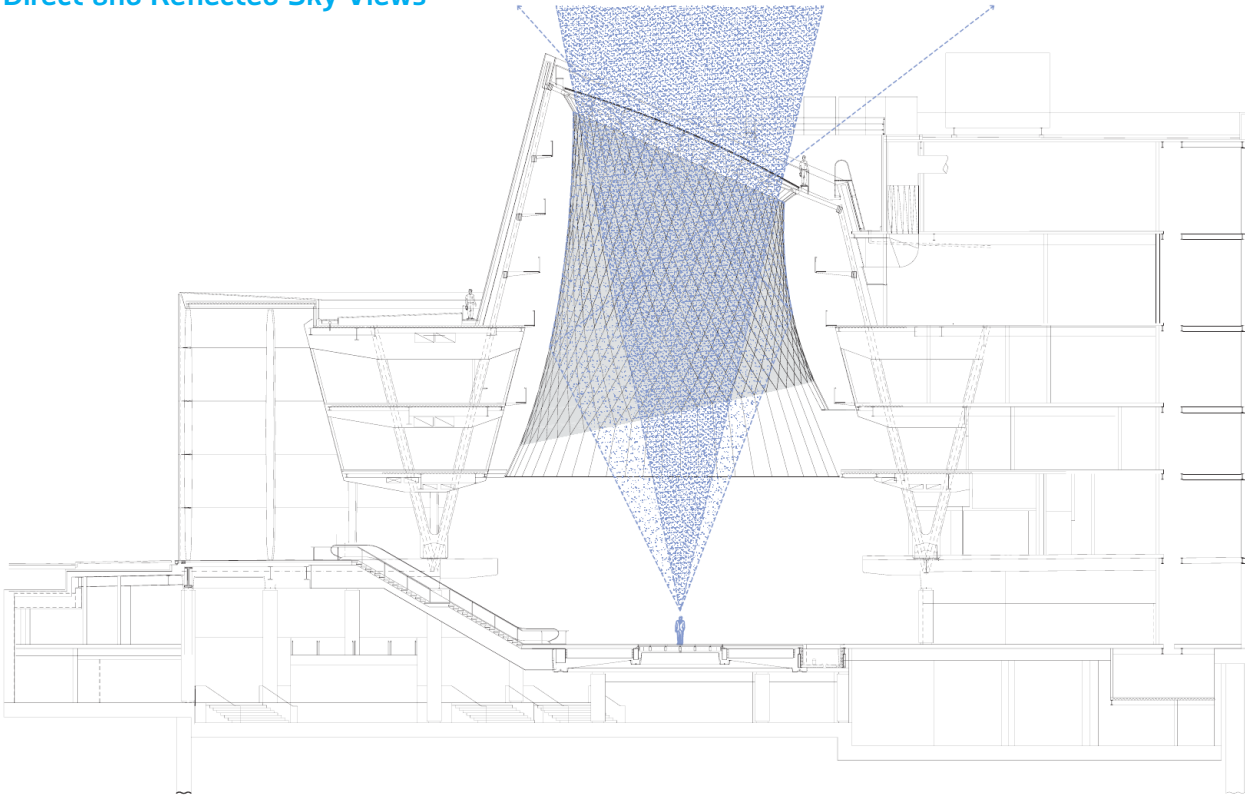
The optical performance of the suspended array stems in part from the panels' reflective finish. The aluminum panels have an anodized surface whose coating was originally

developed for use as a material for reflectors in light fixtures. This material is approximately 95 percent light reflective and provides just the right balance of specular and diffuse reflection, says Star Davis, a lighting designer with the Arup team who worked on the project. It provides a soft reflection that spreads widely and evenly underground—and creates that ethereal field of brightness around the oculus.

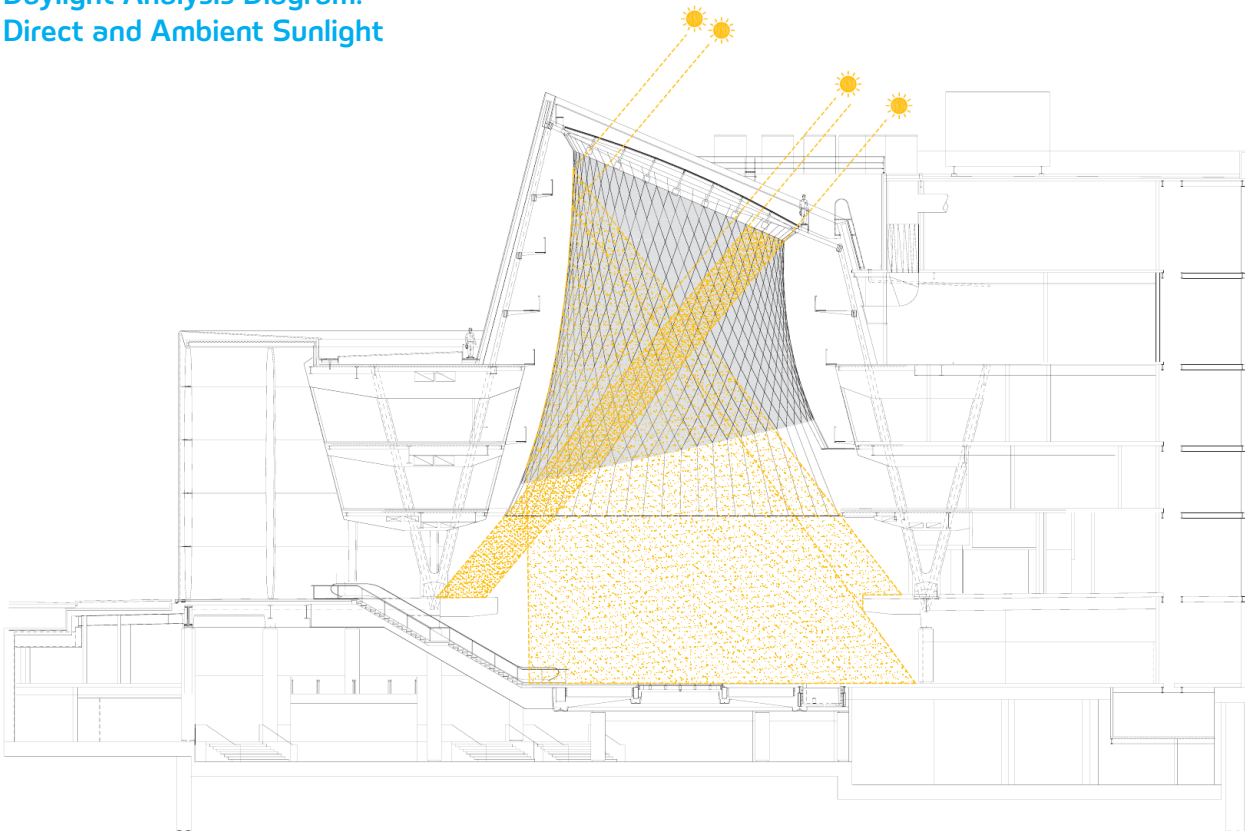
As for the double-curved, hourglass form of Sky Reflector-Net, the design evolved with the changing architectural design of the Fulton Center. Between 2006–08, due to rising project costs, the originally planned dome was reduced in size and then eliminated, so JCDA had to sideline their original design for a special glass skin composed of clear, diffuse glass and metal mirrors. Grimshaw and Arup designed a smaller, more economical atrium with a conical rotunda and glazed oculus skylight at the top. (Despite the change in scale, the atrium is still roughly as large as the rotunda at the Solomon R. Guggenheim Museum farther uptown, according to JCDA.) To maximize the solar exposure, the oculus is tilted 23 degrees to the south and positioned slightly off center to evade the shadows of adjacent buildings, a move that was based on earlier light simulation models.

None of the design team members regretted the loss of the dome, at least in retrospect. On the contrary, Carpenter said, the change turned out to be "a much better opportunity to harness light." Franks believes that it simplified the daylighting concept, replacing the omnidirectional light condition of the glass dome with a single, overhead light source. JCDA reconsidered their approach and began developing an optical liner, or sheath, to be inserted beneath the skylight. Working with engineers Schlaich Bergermann

Daylight Analysis Diagram:
Direct and Reflected Sky Views



Daylight Analysis Diagram:
Direct and Ambient Sunlight





Escalators transport commuters from street level down to the main subway kiosks and turnstiles (left). Linear fluorescent lamps arranged in X patterns are incorporated into the metal ceiling panels of the pedestrian corridors to the subway platforms (right).

und Partner (SBP), they developed a parametric model of a two-way cable net.

This led to a series of structural form-finding exercises and ray tracings to determine optimum tensile and optical performance. “Light was the predominant thing, versus formmaking,” says Richard Kress, senior designer on the project for JCDA. The hourglass-like form of the cable net makes the sky more visible than would be possible with a conventional dome. As Davidson Norris, an architect who specializes in daylighting solutions and collaborates with James Carpenter through an affiliated practice, Carpenter Norris Consulting, explains, “The curve opens up toward the oculus. And that opening-up gives you a better view of the sky.” The view tends to be most dynamic at times of day when light comes in obliquely.

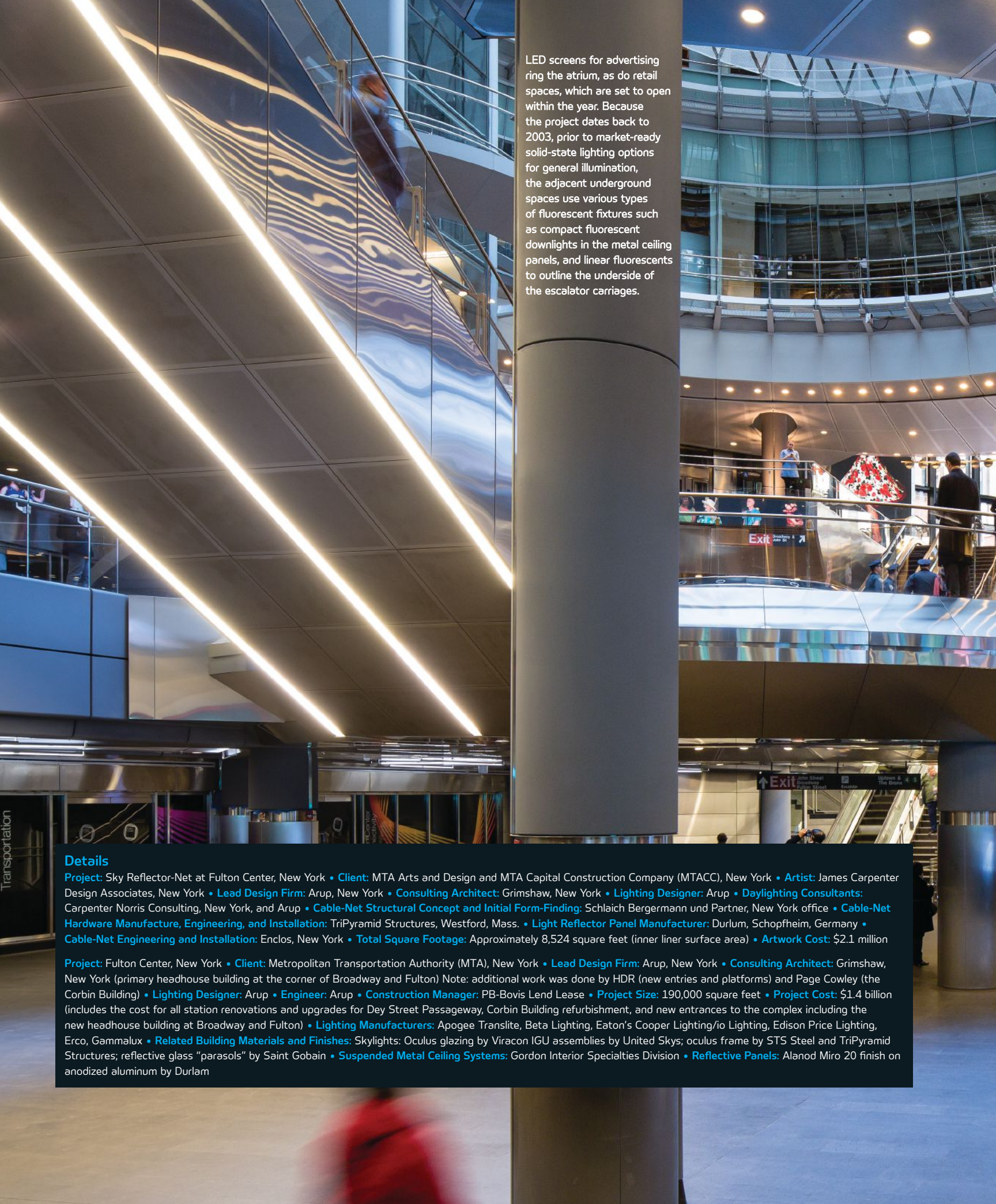
Mindful of the tensile loads of the 4,000-pound structure, SBP proposed attaching the net to the atrium structure only at the top and bottom—to the oculus compression ring and the second-level floor plate. Ultimately, with refinements by Arup, the design evolved into a stainless steel, paired-cable net supporting the 952 uniquely dimensioned panels, each one assigned to a specific place in the net’s layout. Oversize slotted holes in the connector hardware allow for thermal- or pressure-induced movement of the

net even after being tensioned. It took only two weeks to install the pre-assembled lattice, and four weeks to install the panels. To further reflect and refract daylight and create a dappled effect, Grimshaw designed an array of 88 glass fins that are suspended directly beneath the oculus. The architects used parametric modeling techniques to mount the panels at various angles, scattering points of sunlight to different parts of the transit center according to the time of day and year. Measuring 6 feet long by 9 inches tall, each panel is laminated for safety and clamped to the steel frame of the oculus. While not technically part of Sky Reflector-Net, this element revisits one of Carpenter’s early ideas to have “target mirrors” embedded in the oculus dome to bounce specular reflections into the subterranean spaces.

At night, Sky Reflector-Net functions as a kind of reverse daylighting vehicle. Rather than bringing natural light into the space, it serves as a reflector for concealed electric downlights, Franks says. Metal halide lamps, grouped in fours and 400W each, are mounted around the oculus ring, mostly invisible from below. At night, these luminaires shine on the suspended net, which in turn disperses the light evenly. Compact fluorescent fixtures line the lower levels of the transit hub, and linear fluorescents in an X pattern light the underground mezzanines and

passageways. Much of this lighting specification was done a decade ago, Franks says, before LEDs became readily available and suitable for general lighting. Perhaps inevitably, LED advertising screens wrap the atrium at street level, adding a significant source of brightness and a competing optical draw.

Still, Sky Reflector-Net offers a meditative moment of celestial reverie. The idea that commuters would end up resting their eyes in the sky, or in a reflection of the sky, seems almost utopian. The installation transforms commuters, however momentarily, into viewers. For this reason, architectural theorist and historian Sarah Whiting suggests in an essay from *Beyond Surface Appeal: Literalism, Sensibilities, and Constituencies in the Work of James Carpenter* that Carpenter’s work produces what might be called a *suspended public*—“a collection of individuals who share the experience of being suspended between memory and dream, suspended from everyday life ... if only while they experience the project.” Revealing the natural environment with augmented clarity, Sky Reflector-Net operates in a space between empirical experience and optical imagination. It succeeds in bringing together the usually separate worlds of the street, the subway, and the sky. •



LED screens for advertising ring the atrium, as do retail spaces, which are set to open within the year. Because the project dates back to 2003, prior to market-ready solid-state lighting options for general illumination, the adjacent underground spaces use various types of fluorescent fixtures such as compact fluorescent downlights in the metal ceiling panels, and linear fluorescents to outline the underside of the escalator carriages.

Details

Project: Sky Reflector-Net at Fulton Center, New York • **Client:** MTA Arts and Design and MTA Capital Construction Company (MTACC), New York • **Artist:** James Carpenter Design Associates, New York • **Lead Design Firm:** Arup, New York • **Consulting Architect:** Grimshaw, New York • **Lighting Designer:** Arup • **Daylighting Consultants:** Carpenter Norris Consulting, New York, and Arup • **Cable-Net Structural Concept and Initial Form-Finding:** Schlaich Bergermann und Partner, New York office • **Cable-Net Hardware Manufacture, Engineering, and Installation:** TriPyramid Structures, Westford, Mass. • **Light Reflector Panel Manufacturer:** Durlum, Schopfheim, Germany • **Cable-Net Engineering and Installation:** Enclos, New York • **Total Square Footage:** Approximately 8,524 square feet (inner liner surface area) • **Artwork Cost:** \$2.1 million

Project: Fulton Center, New York • **Client:** Metropolitan Transportation Authority (MTA), New York • **Lead Design Firm:** Arup, New York • **Consulting Architect:** Grimshaw, New York (primary headhouse building at the corner of Broadway and Fulton) Note: additional work was done by HDR (new entries and platforms) and Page Cowley (the Corbin Building) • **Lighting Designer:** Arup • **Engineer:** Arup • **Construction Manager:** PB-Bovis Lend Lease • **Project Size:** 190,000 square feet • **Project Cost:** \$1.4 billion (includes the cost for all station renovations and upgrades for Dey Street Passageway, Corbin Building refurbishment, and new entrances to the complex including the new headhouse building at Broadway and Fulton) • **Lighting Manufacturers:** Apogee Translite, Beta Lighting, Eaton's Cooper Lighting/lo Lighting, Edison Price Lighting, Erco, Gammalux • **Related Building Materials and Finishes:** Skylights: Oculus glazing by Viracon IGU assemblies by United Skys; oculus frame by STS Steel and TriPyramid Structures; reflective glass "parasols" by Saint Gobain • **Suspended Metal Ceiling Systems:** Gordon Interior Specialties Division • **Reflective Panels:** Alanod Miro 20 finish on anodized aluminum by Durlum



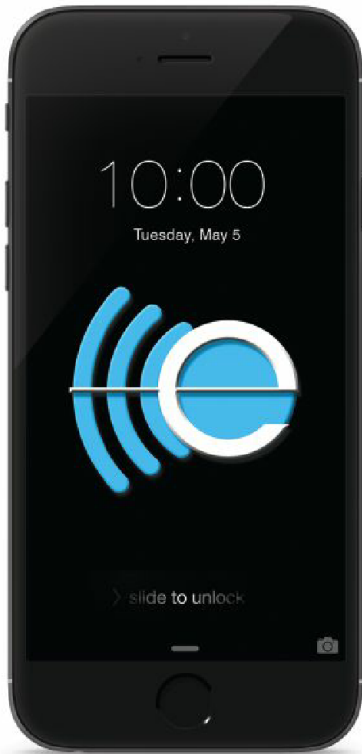
EXIT John Street City Street Broadway

Downtown & Broadway

EXIT

Downtown & Broadway

4 5 Uptown & The



The latest BKSSL[®] accessory.

try it out at LightFair 2015... Booth 1221



B-K LIGHTING.com



**CONNECTING YOUR
BRIGHT IDEAS**

EVERY CONNECTION COUNTS



TE Connectivity (TE) is transforming technology and enabling workspaces to operate more efficiently through new Low Voltage Direct Current (LVDC) distributed power systems. These “plug-and-play” systems limit the number of conversions necessary to power workspace lighting and accessories, and are inspiring designers to take greater advantage of LEDs functionality, modularity and flexibility.

Visit booth #3564 at LIGHTFAIR to see how TE is helping designers maximize the potential of modern lighting systems, or connect with us at te.com



NeoCon®

June 15 | 16 | 17 | 2015

NeoConversations

With 50,000 architecture and design professionals in attendance, NeoCon offers endless networking opportunities with existing colleagues, new collaborators, the best in the business.

The Merchandise Mart, Chicago
NeoCon.com

AD INDEX

PAGE	ADVERTISER
31	Aamsco Lighting Inc.
3	Acuity Brands Lighting
2	AL Design Awards
1	Amerlux Global Lighting Solutions
39	American Institute of Architects
50	B-K Lighting, Inc.
23	Columbia Lighting
C2	Con-Tech Lighting
13	Crestron Electronics, Inc.
32	DIAL GmbH
11	Eaton's Cooper Lighting Business
35	Edge Lighting
16	Feelux Lighting
25	Finelite
5	Forest Lighting
33	Intense Lighting
15	LG Chem
21	LIGHTFAIR International

PAGE	ADVERTISER
C3	Lighting by Gregory
19	Lucifer Lighting
9	Lumenpulse
29	Luminis
C4	Lutron
53	MechoShade
51	Merchandise Mart Properties, Inc./NeoCon
26	No. 8 Lighting
37	Revolution Lighting Technologies
7	SELUX
4	Shanghai Sansi Electronic Engineering
6	Shanxi Guangyu-GYLED
20	Sichuan Jiuzhou Electric Group Co. Ltd.
37	Signcomplex China
38	Simkar Corp.
50	TE Connectivity Ltd.
38	Torshare Ltd.

The New York Times Building pursued a Window-Management® System with energy efficiency and cost savings in mind. MechoSystems' state-of-the-art SolarTrac® System — paired with the electrical lighting — is saving up to 25% in energy costs.

Start spreading the news.



WindowManagement®
MechoSystems
 Design with light.®

T: +1 (718) 729-2020
 F: +1 (718) 729-2941
 E: marketing@mechosystems.com
 W: mechosystems.com/newyorktimes
 @mechosystems

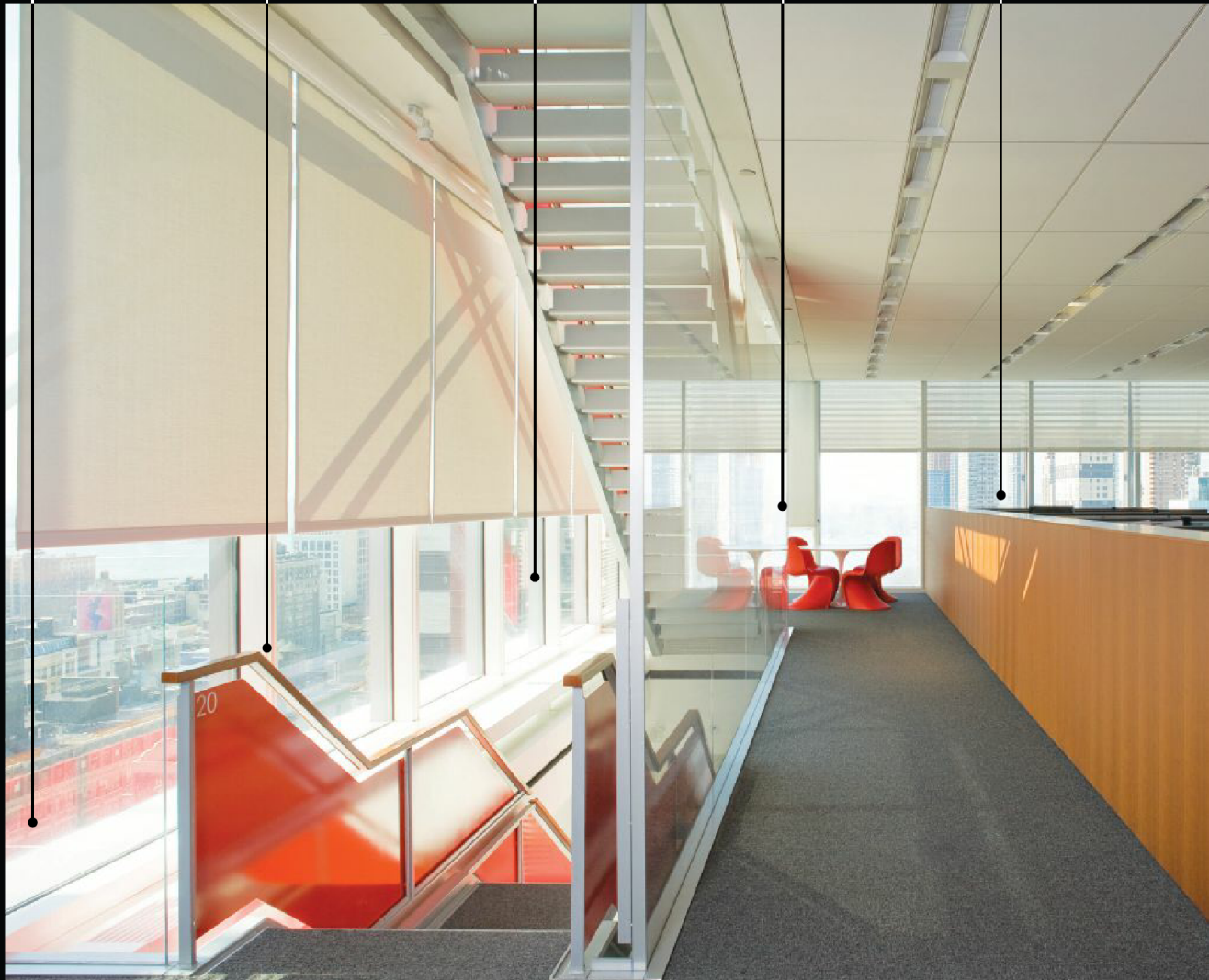
Offer views to the outside.

Provide daylight harvesting.

Control the sun's glare.

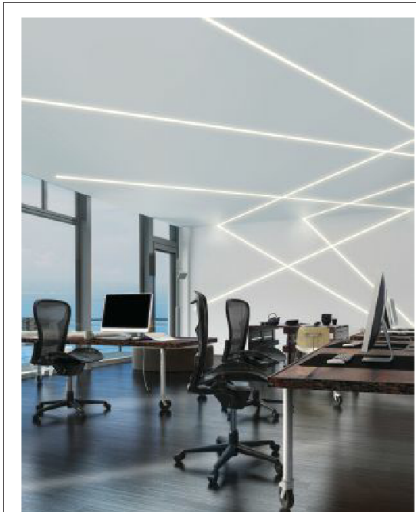
Limit solar radiation.

Manage contrast ratios.



Olde Good Things
 Specialists in architectural salvage
 Reclaimed period antique lighting
 Mid-century & industrial
 ogt.bz/archlighting1
 websales@oldegoodthings.com • 888.233.9678
 NYC, LA & PA!

LIGHT DIRECTORY ARCHITECTURAL LIGHTING RESOURCE
 LIGHTDIRECTORY.COM: Products, Catalogs, News, Jobs, Events, iPhone/Android apps



Let the Drywall be your Canvas

Create unexpected architectural lighting accents with the award-winning TruLine .5A from Pure Lighting. TruLine blends seamlessly into 5/8" drywall without joist modification, vanishing into the architecture to become one with the environment. Only a line of light shines through, allowing for horizontal, vertical, diagonal or geometric runs across multiple planes.



Torshare LED Panel light, your best choice.

Top quality comes from:

- Soft & uniform high quality light;
- PMMA light guide plate imported from Japan, no color change in 5 years;
- Uniform light by strictly controlling LED BIN;
- Famous brand driver (say, Meanwell) & various led driver options;

Non-dimming	✓
3 in 1 (PMW / 1-10V / Resistance) dimming	✓
DALI dimming	✓

Torshare Ltd
 Tel: +86-755-29833929 ext. 820
 sales@torshare.com • www.torshare.com
TORSHARE 拓享

AEL COLONIAL LED LANTERNS




Dramatically reduce energy and maintenance costs with Colonial LED Lanterns from AEL. Our portfolio offers a range of solutions in both standard and full-cutoff distributions perfect for Municipal, Residential and Utility applications. Replace 150W and higher HPS luminaires with features that include easy tool-less maintenance, multiple lumen packages & distributions, integrated controls options and an L70 life of over 100,000 hours at 25°C.

AEL American Electric Lighting®

THE MINI 02
 high performance LED luminaires

A revolutionary MR16 size light engine that produces more light and a more beautiful beam with less wattage than traditional halogen sources.



CONTECH LIGHTING
 www.contechlighting.com

Light that turns heads, draws attention.

That's the power of Amerlux.



Passion. Power. Performance.
 www.amerlux.com

SpaceBuilder™

Simplify design, installation and startup with Crestron SpaceBuilder

crestronspacebuilder.com | 855.644.7643



©2015 Crestron Electronics, Inc.



The latest BKSSL® accessory. try it out at LightFair 2015... Booth 1221

B-K LIGHTING.com

DIALux evo – the next generation of lighting design



DIALux evo offers a completely new approach to specifiers. Room-based light planning is no longer up to date. Now the building in its entirety including the effect from outside is taken into account. And as always: the complete software package is absolutely free of charge. Get your free copy at www.dialux.com.



Lightfair Booth 3081

FOREST LIGHTING
Sustainable Illumination

Affordable Performance.
T8 & T5 LED Linear Lamps.

Forest Lighting T8 and T5 LED Integrated Linear Lamps feature a unique design allowing multiple lamps to be connected up to 20 feet, for maximum interior-space installation flexibility and 40% energy savings. These affordable LED lamps feature an integrated universal driver and can be surface mounted. Available in 2 & 4 foot lengths, and last up to 50,000 hours. In-stock now. UL, DLC.

Forest Lighting, 2252 Northwest Pkwy SE, Suite D, Marietta, GA 30067
800-994-2143 www.foreslighting.com

GRAFIK T™ by Lutron



GRAFIK T is a new lighting control for the digital age that marries advanced Lutron technology with minimalist design. The intuitive one-touch operation of GRAFIK T reinvents the way we interact with lighting controls: a simple touch of a finger on the LED light bar sets the lighting level.

lutron.com/GRAFIKT

Model: GY600SF20GYI200SF40



Tri-proof light refers to anti-corrosion, dustproof and waterproof. Generally applicable to damp, highly corrosive and dusty places such as the underground parking garage, warehouse and natatorium etc.

- LED chip: SAMSUNG SMD3030 light source
- Lamp Size: GY600SF20: 665*124*91mm, GYI200SF40: 1266*124*91mm
- Drive parameter: GY600SF20 (output voltage 30-40V, electric current 0.48A); GYI200SF40 (output voltage 30-40V, electric current 0.96A)
- Input voltage range: AC100~240V
- Power: 20W, 40W
- CRI: ≥80
- IP rating: IP65

SHANXI GUANGYU LED LIGHTING CO., LTD.
sales@gyledlight.com
www.gyledlight.com




Architecture for Light
By Kim and Paul Mercier



Architecture for Light
Kim & Paul Mercier

An introductory e-textbook for architecture and interior design students or as a resource for architects and interior designers.



Illuminating
ENGINEERING SOCIETY

Visit: www.ies.org/store

SunDialer®

The automated system is the advanced solar-tracking controller for small-scale and retrofitted projects. It positions shades on windows based on real-time sky conditions, maximizing personal comfort and views to the outside. And it's highly energy efficient, too.




T: +1 (800) 437-6360
W: mechosystems.com

NECTOR M POWER SYSTEMS

Enable Design Flexibility for Connected Lighting Systems



te.com





ARAMIS AR150
13,500 lumens from a 6" diameter

The Aramis AR150 is a high power cylindrical pendant LED luminaire developed for interior applications. Its clean aesthetic combines with a luminous efficacy of over 100 lm/W and a lifetime of 86,000 hours – 3 times the longevity of a conventional HID light source.

luminis.com




A Simply Superior LED.



8lighting.com

DESIGN DEFINE DISAPPEAR

THE NEW SHAPE OF LIGHT.





Stephen Selkowitz

interview by Elizabeth Donoff

photo by Noah Kalina

“The divergence between the physical, measurable world and the perceptual world is really an opportunity to use technology to our advantage. It shouldn’t be an excuse to say we can’t create beautiful well-lit buildings that are also environmentally friendly.”

Stephen Selkowitz has been at the forefront of building science, daylighting, and energy performance discussions for more than 35 years. He graduated with a degree in physics from Harvard and continued his graduate work at CalArts. While teaching at CalArts and SCI-Arc, he started his own consulting firm. Focusing on how to make structures more efficient—a hotbed issue, as it was the time of the energy crises—took him to Lawrence Berkeley National Laboratory (LBNL), in Berkeley, Calif., where a new group, led by building science specialist Art Rosenfeld and physicist Sam Berman, was starting to look at how science might address energy issues. With early funding for the group’s research from the Energy Research and Development Administration (one of the precursor agencies to the U.S. Department of Energy) he focused on daylighting and façade performance. Selkowitz has led LBNL’s Building Technologies Department for more than 20 years and continues as group leader for Windows and Building Envelope Materials and as a senior adviser for Building Science. His contributions cannot be underestimated, as they have helped shape the integration of energy-performance concepts into contemporary building design.

Can energy-related issues and design find common ground in lighting discussions?

In the energy world, we tend to talk about watts per square foot, kilowatt-hours, and footcandles. On the other side of the lighting world, we talk about beauty, appearance, and, of late, health, well-being, and performance. Closing that gap is where the interesting research is happening.

How has daylighting research evolved?

There has been a philosophical and pragmatic change rooted in a shift away from the original idea of minimum codes to the current, more nuanced sustainable designs.

Where does sustainability fit in the lighting conversation?

When you work in the lighting–energy world you are always bumping up against limits. It’s important to look at a broader set of performance issues. Sustainable designs are not just about energy savings but include human factors, comfort, and productivity.

What’s the greatest change you’ve witnessed in how we think about building systems?

We live in a world that’s complex and dynamic. Building systems are both part of the problem and the opportunity. A key challenge is how to provide lighting and daylighting solutions for ever-changing building operating conditions. •

Contrast Sonneman Edge/Pure Philips Lucifer Tech/Element Holtkotter WAC

Lighting

for the Modern World



Lighting
by Gregory

DOWNTOWN:
158 Bowery
New York, NY 10012

UPTOWN:
Architects & Designers Building
Innovative Audio Visual Showrooms
150 East 58th, Street Level
New York, NY 10155

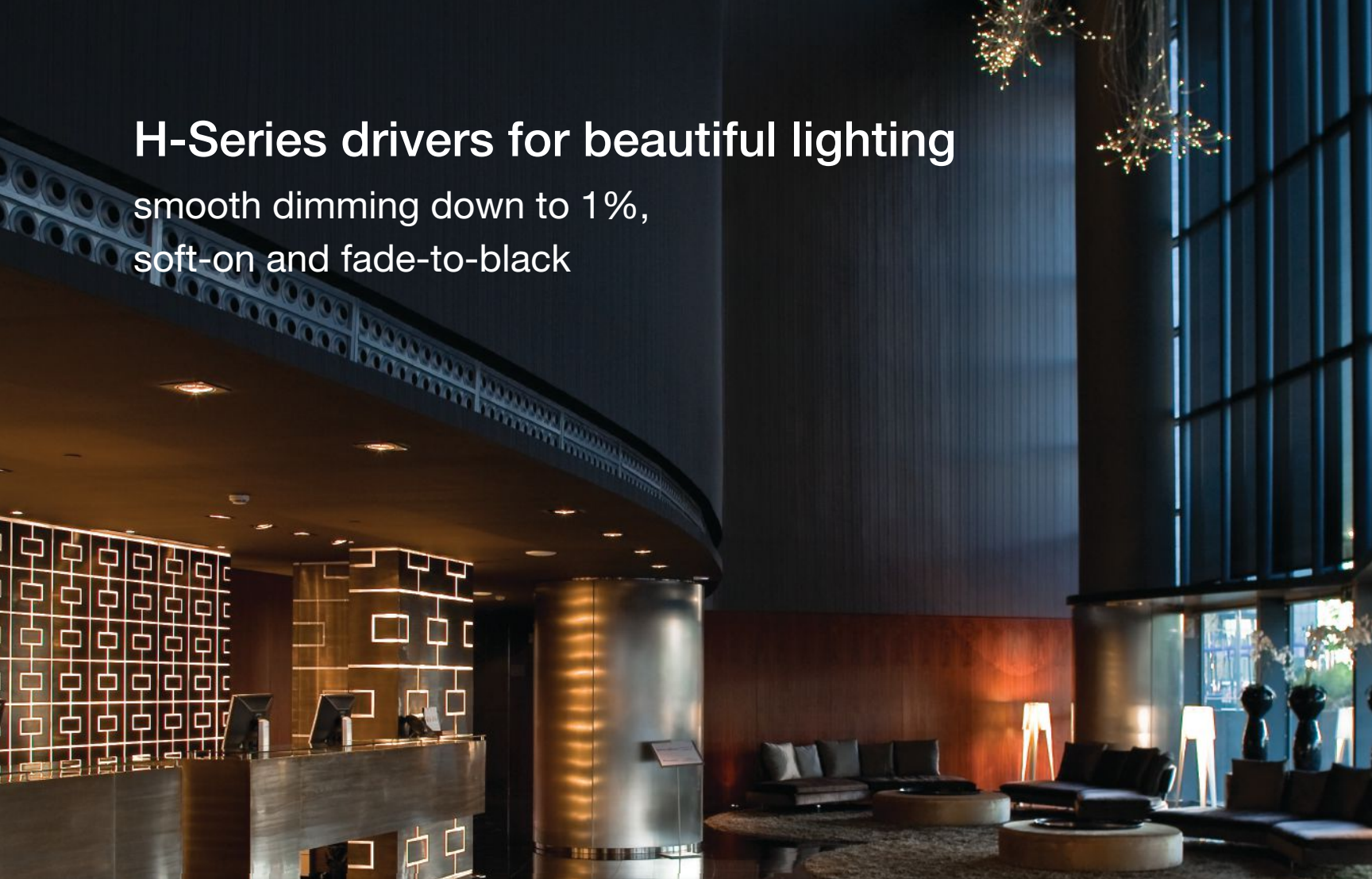
www.lightingbygregory.com

646.695.9599

sales@lightingbygregory.com

H-Series drivers for beautiful lighting

smooth dimming down to 1%,
soft-on and fade-to-black



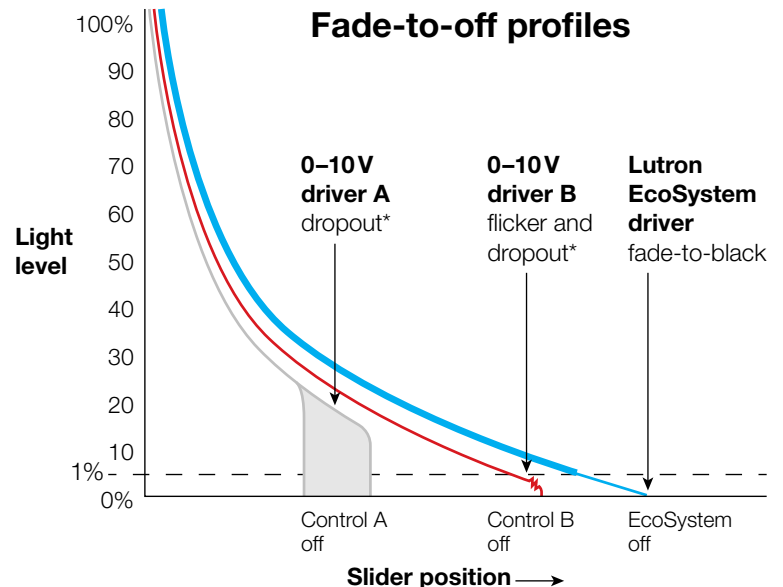
Available for downlights, troffers and linears up to 75 W

EcoSystem™ H-Series drivers

Experience incandescent-like dimming with an LED driver

- Soft-on
- Flicker-free
- No interruptions and no dropout
- Compatible with all fixture manufacturers

Contact your Lutron representative to schedule an in-person demo today or visit www.lutron.com/hseriesLED



*The lowest light level attained depends on the load tested.